

We are the polymer analysis people.



Agilent GPC/SEC Portfolio



Agilent Technologies *the* Total GPC Solution

We understand what is needed from a GPC analysis but do we have all of the products to provide a solution?

- GPC Columns



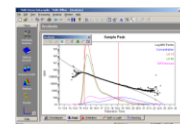
- GPC Standards



- GPC Instrumentation



- GPC Software



- GPC Expertise

We are the Polymer Analysis People
Download resources at www.agilent.com/chem/GPCresources
The Measure of Confidence  Agilent Technologies

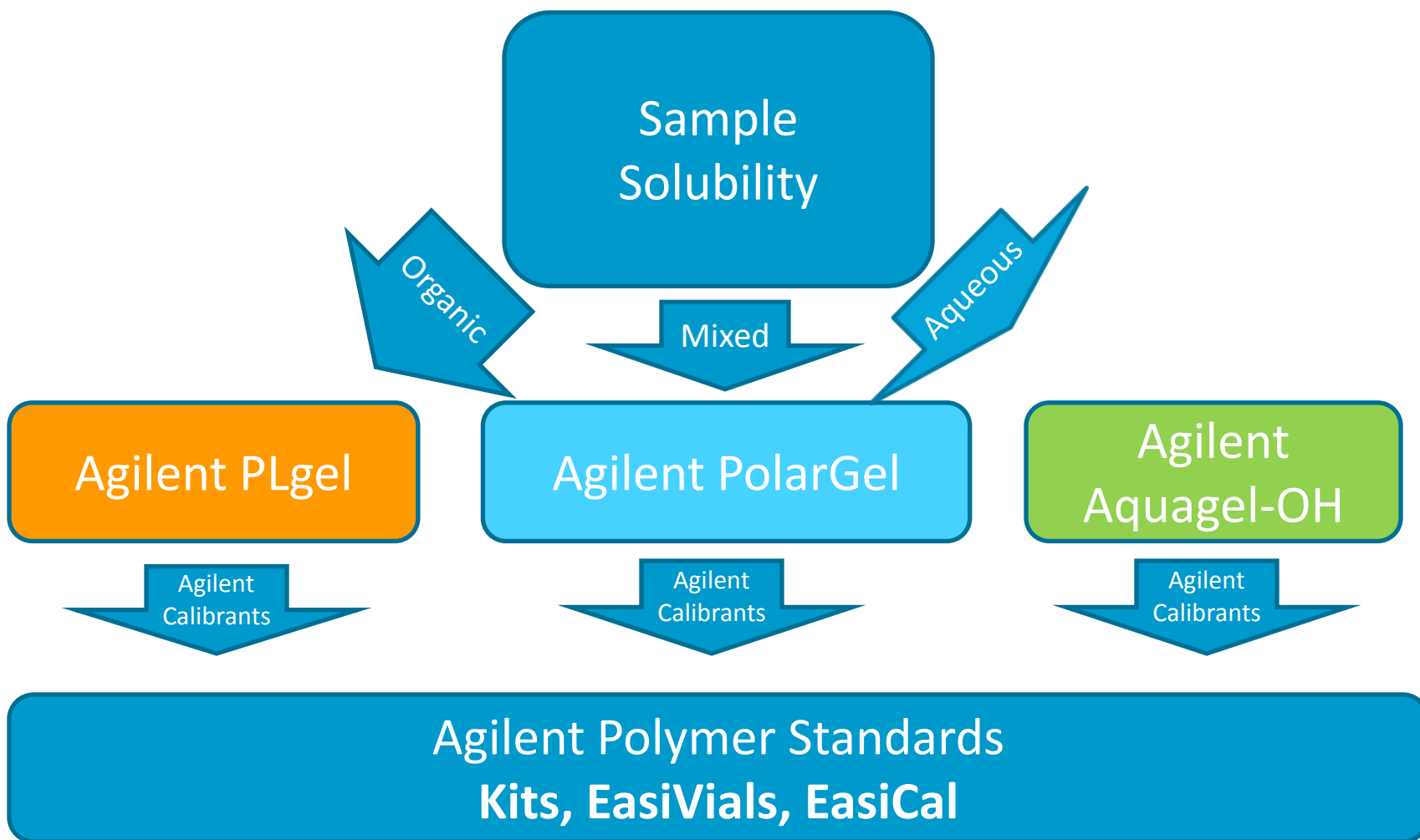


Agilent Technologies



Agilent Technologies

Columns and Standards for all GPC Applications



Agilent GPC Instrumentation Portfolio



**Agilent 1260
Infinity
GPC-SEC system**



**Agilent 1260 Infinity-MDS
Multi Detector Suite**

Agilent GPC/SEC Software
Build 1.0.2886.26752

 **Agilent Technologies**
Copyright © 2011 Agilent Technologies



Agilent PL-GPC 50
Ambient to 50 °C



Agilent PL-GPC 220
Ambient to 220 °C

The Heart of the GPC Analysis

New GPC Software from Agilent

- **Written by GPC people for GPC people**
- **A successor to the popular Cirrus GPC Software**
- **Simple but powerful**
- **Control, Collection and Analysis**
- **Clear but customizable**
- **Functionality for conventional and advanced GPC**
- **Comprehensive reviewer**
 - Simplifies and facilitates your GPC/SEC process**
 - Everything required for GPC/SEC in a single package**

Agilent GPC/SEC Software

The fastest, easiest way to complete your GPC/SEC Workflow



Agilent GPC/SEC Software

System Setup

Workbook Setup

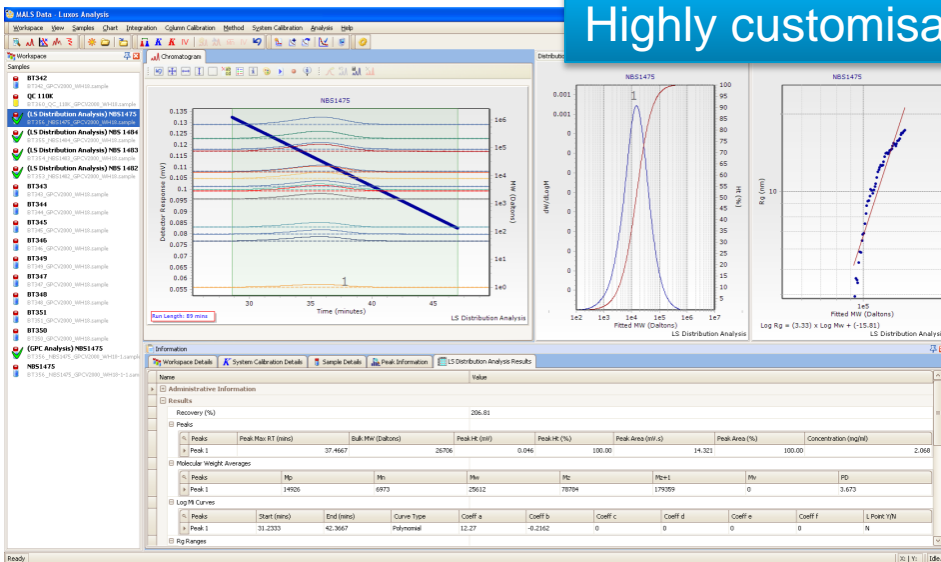
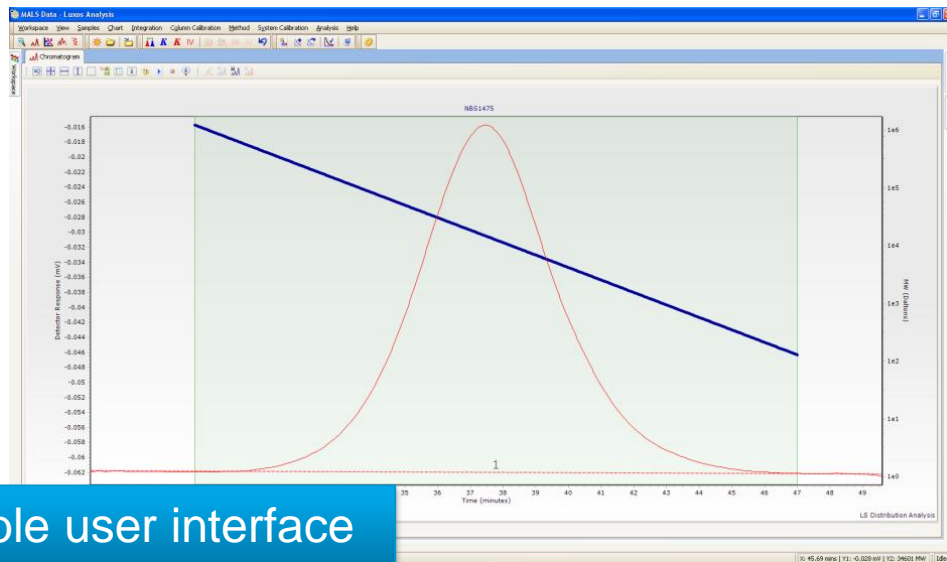
Collect data

Analyse Data

Review Data

Presented according to your requirements

Simple & uncluttered interface in which only the necessary information is shown



All information presented in a format which is easily accessible & viewable

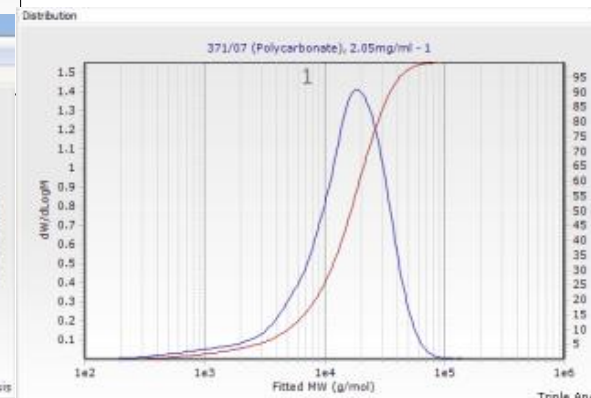
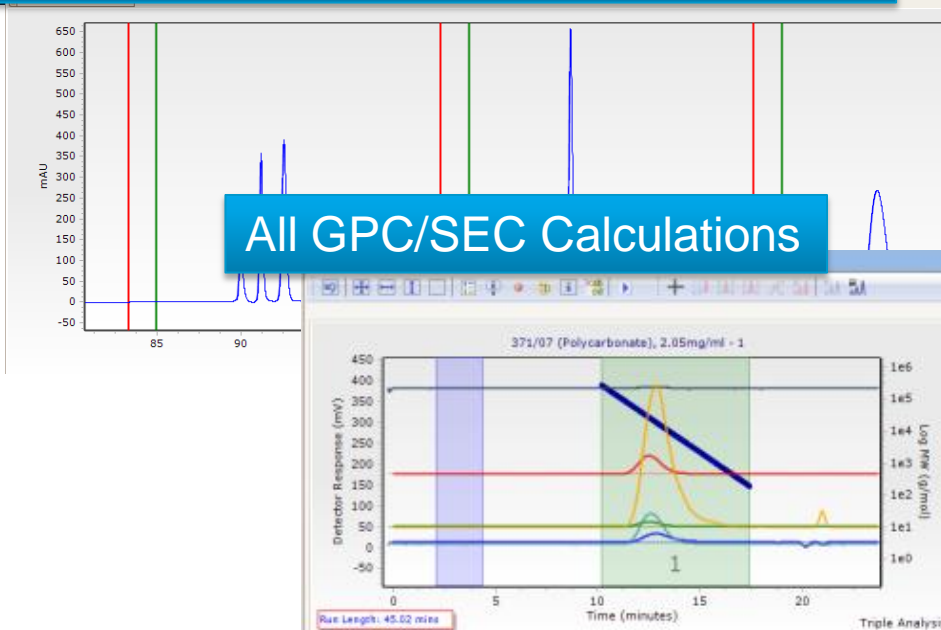
Agilent GPC/SEC Software

Single solution for all your GPC/SEC Requirements



Control of Agilent GPC/SEC Systems

Collection from Agilent GPC/SEC Systems

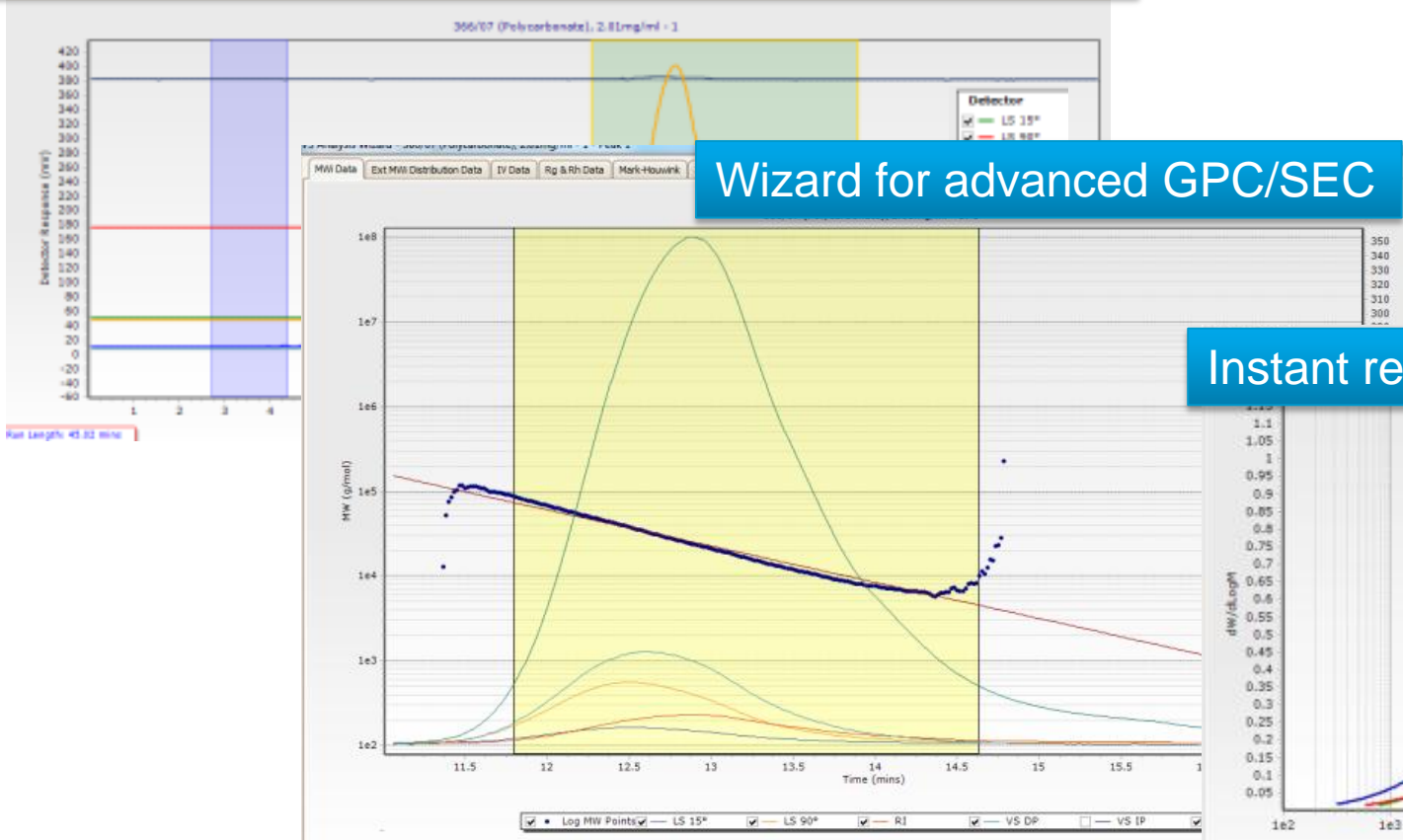


Agilent GPC/SEC Software

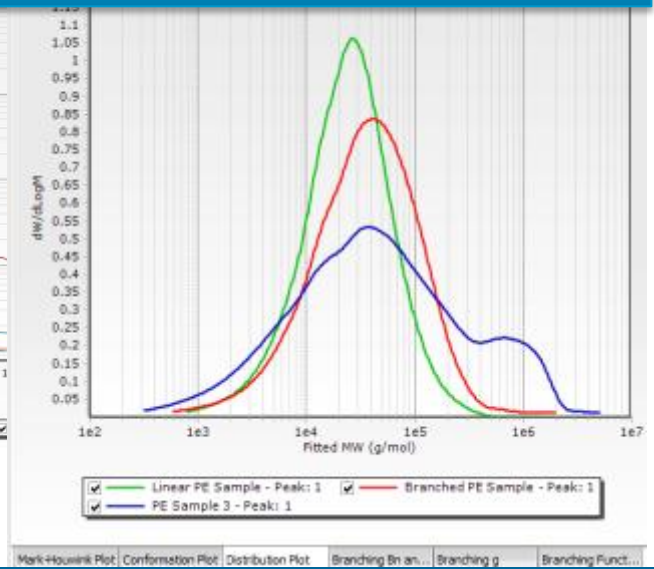
Fast and Easy GPC/SEC



Baselines / integration regions added with single click

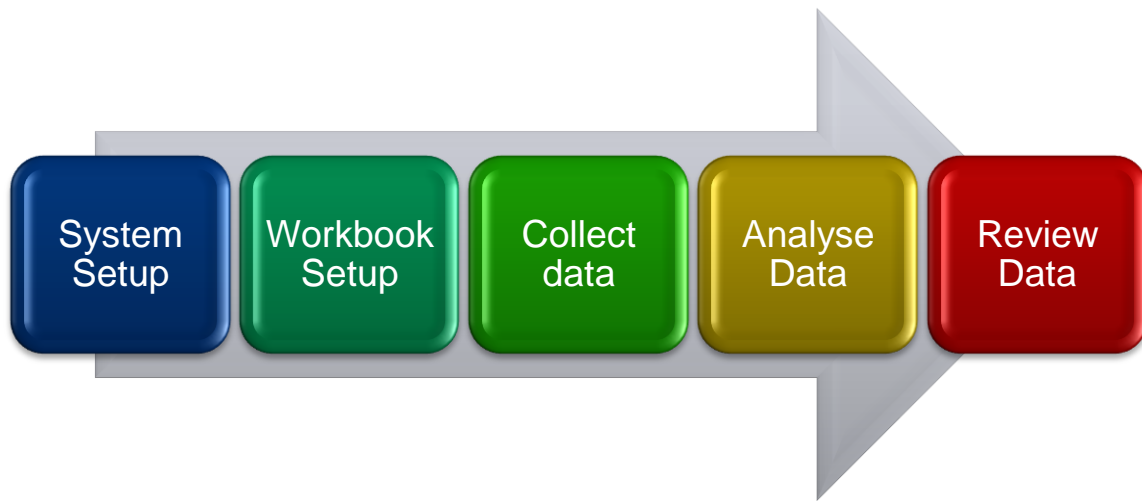


Instant report or overlay data



Agilent GPC/SEC Software

The fastest, easiest way to complete your GPC/SEC Workflow



Single
software
solution

- Control Agilent GPC/SEC Instrumentation
- Collect and store all information in the sample file
- Perform all GPC/SEC calculations
 - Conventional using RID/UV/ELSD, Viscometry, Light Scattering, Triple, Branching
- Simplified reporting with a single click
- Powerful Reviewer functionality to compare all data for all samples



Agilent 1260 Infinity GPC/SEC System

Reproducible

High Precision

- High performance pump

Extreme Robustness

- Industry-leading Agilent LC systems

Performance

- High quality detectors

New Agilent GPC/SEC Software



Agilent 1260 Infinity GPC/SEC System

Modular approach to Conventional GPC

Versatile system with a wide range of modules

- GPC/SEC requirements
 - RID (VWD, DAD, ELSD also supported)
 - Isocratic pump
 - Degasser recommended
 - Column oven recommended
 - Upgrade route to advanced GPC available
 - Supported with the new Agilent GPC Software



Agilent GPC/SEC Software

System Setup

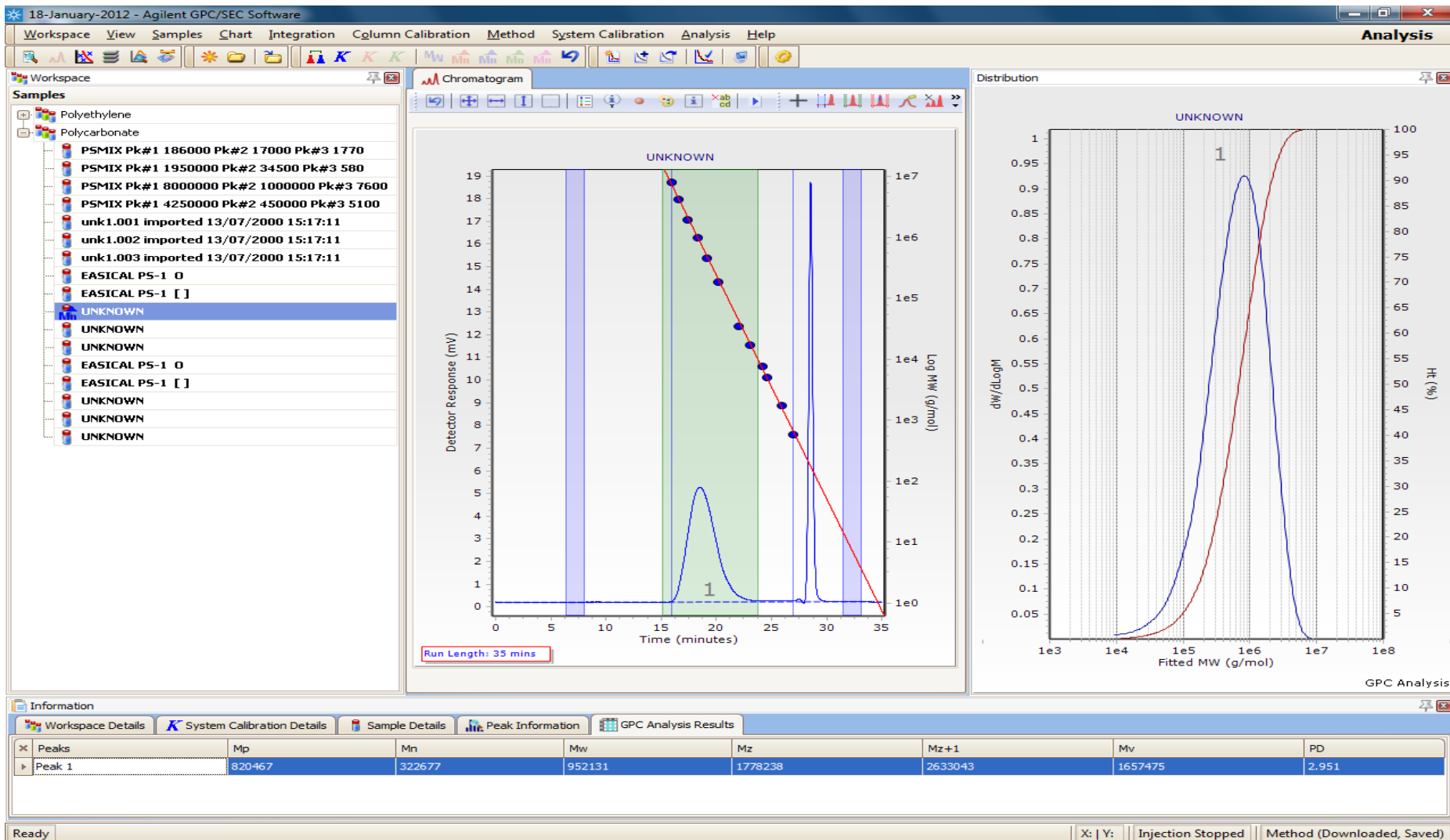
Workbook Setup

Collect data

Analyse Data

Review Data

Conventional Calculations



Agilent Technologies

1260 Infinity GPC/SEC Multi Detector Suite

Advanced detection for Absolute Accuracy

Information Rich

- Accurately heated (ambient to 60 °C) advanced detector modules :
 - Refractive Index
 - Viscometer
 - Dual Angle Light Scattering

Low Dispersion

- Industry leading detector flow cell technology

Agilent GPC/SEC Software

- Single software solution



Agilent GPC/SEC Software

Advanced GPC/SEC Calculations



18-January-2012 - Agilent GPC/SEC Software

Workspace View Samples Chart Integration Ccolumn Calibration Method System Calibration Analysis Help

Workspace

Samples

- Polyethylene
 - Branched PE Sample
 - PE Sample 1
 - Linear PE Sample
 - PE Sample 2
 - PE Sample 3
 - PS 1 7100000 76600
 - PS 2 3900000 30300
 - PS 3 1124000 5000
 - PS 4 483000 1260
 - PS 5 186000

Chromatogram

PE Sample 1

Run Length: 35 mins

Conformation

PE Sample 1

Log Rg = (0.98) x Log MW + (-4.50), Log Rh = (0.49) x Log MW + (-1.51)

Triple Analysis

Distribution Mark-Houwink Conformation

Information

Workspace Details System Calibration Details Sample Details Peak Information Triple Analysis Results

Peaks	Mp	Mn	Mw	Mz	Mz+1	Mv	PD
Peak 1	95634	29495	413438	2386426	6261737	1494836	14.02

Ready X: | Y: Injection Stopped Method (Downloaded, Saved)

Agilent GPC/SEC Software

Reviewer Functionality

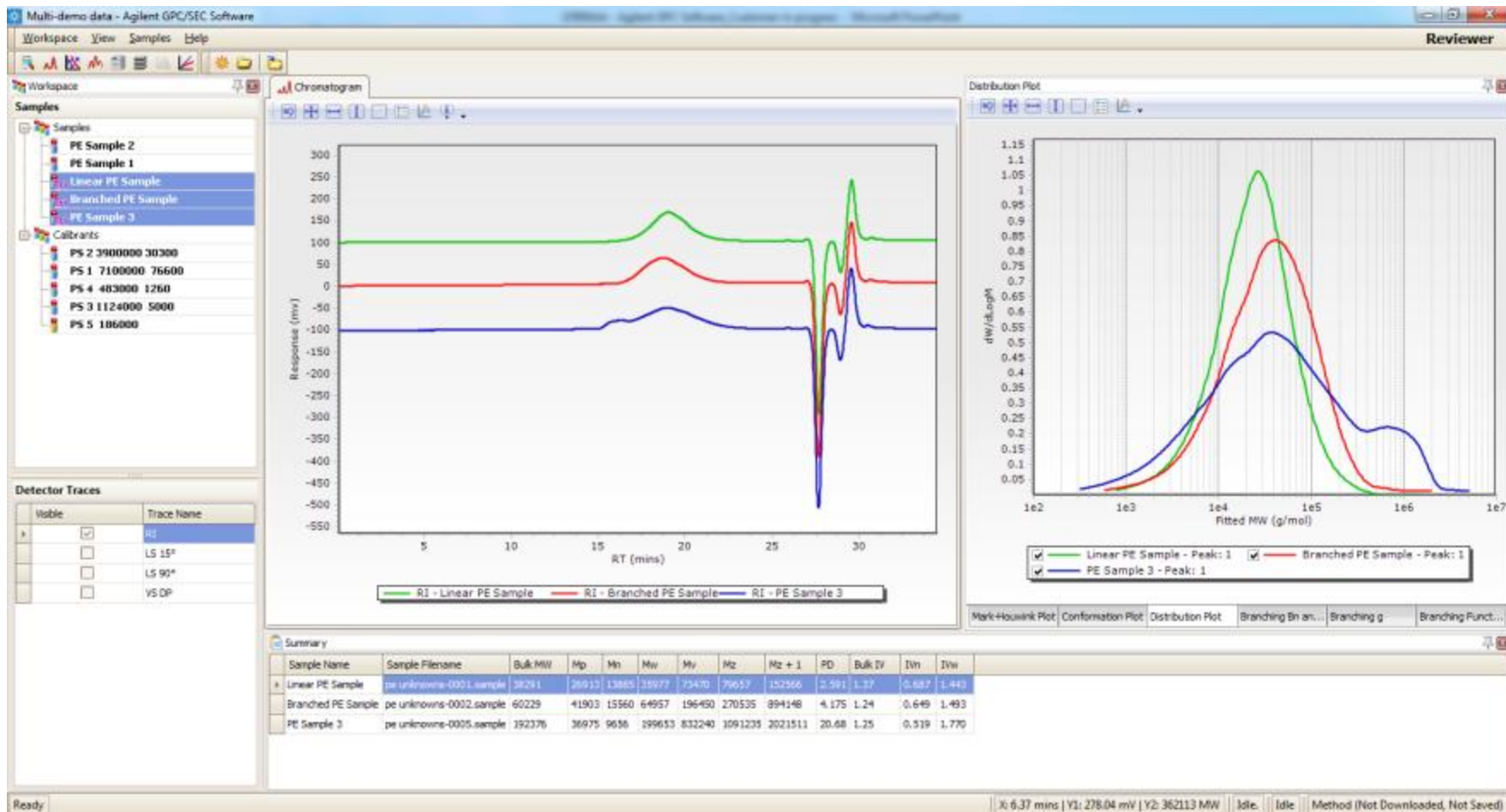
System Setup

Workbook Setup

Collect data

Analyse Data

Review Data



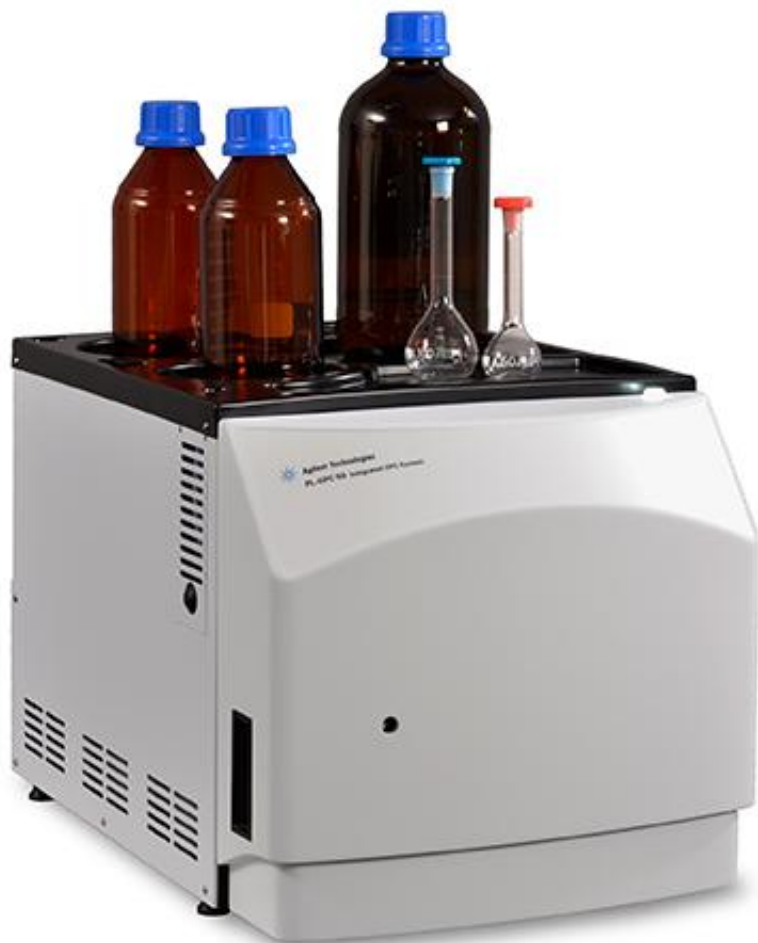
All detector traces, all result plots, all results



Agilent Technologies

Agilent PL-GPC 50

Dedicated system for Conventional and Multi-detector GPC



Integrated

- Everything required for GPC in a single unit
- Advanced detectors
 - RI (Included)
 - Viscometer
 - Light Scattering

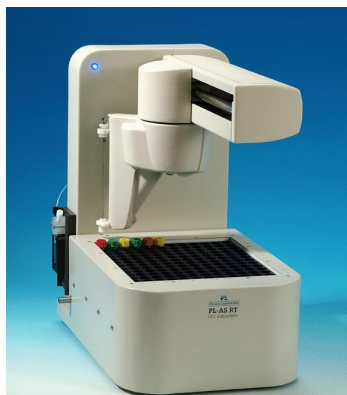
Strong Heritage

- Excellent customer loyalty

Fully software controlled

- [Agilent GPC/SEC Software](#) (June '12)

Agilent PL-GPC 50 Integrated GPC System



Pump, degasser, column oven and up to 3 detectors integrated inside the GPC-50 system

Agilent PL-GPC50 GPC System Detection Summary

Agilent PL-GPC 50 GPC system

– Refractive Index Detector

– Viscometer

– Light Scattering Detector

– Cirrus Multi GPC Software

– NEW AGILENT GPC SOFTWARE



- Fully compatible with organic and/or aqueous soluble polymer analysis by GPC

- The perfect solution for those that prefer an integrated system with up to three detectors

Agilent PL-GPC 220

Confidence in extreme GPC

Safe in extreme conditions

- Fully integrated system, heated up to 220 °C
 - Maintain sample solubility
 - Eliminate blockages
 - Safety

Confidence in Quality of Results

- Dual zone autosampler avoids sample degradation
- Agilent pump ensures reproducible results.
- Low dispersion detector cells

Confidence in Capabilities

- Industry standard for high temperature GPC
- Ability to perform every available GPC application
- Integrated Light Scattering & Viscometry detectors



Agilent PL-GPC 220 HT GPC

Accurately controlled column oven with integrated injection system, columns and detector(s)

Temperature controlled solvent delivery module with solvent reservoirs, Agilent pump and degasser

Dual temperature zone autosampler prevents sample degradation

High precision Agilent pump ensures reproducible results even in viscous solvents



Sample is heated from injection to waste to maintain sample solubility & stability



PL-GPC 220 Autosampler

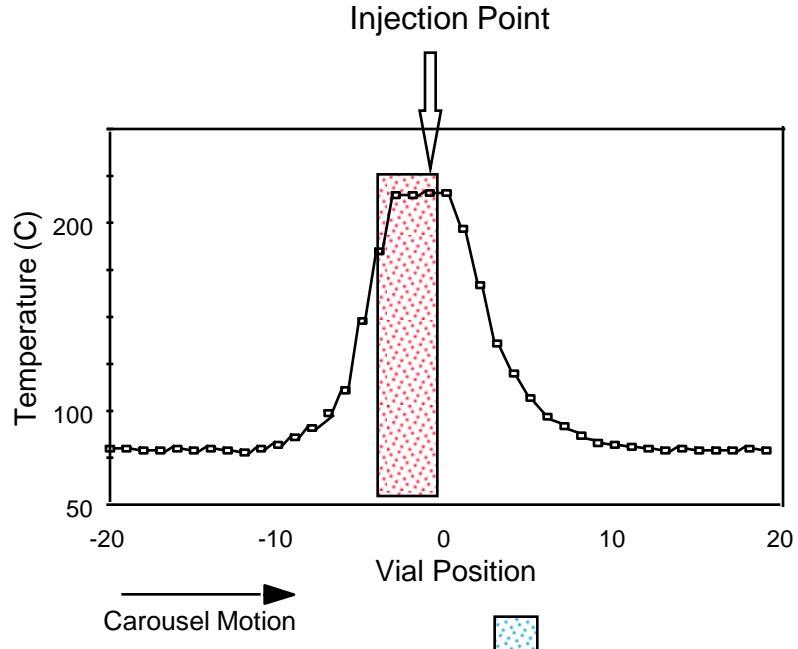
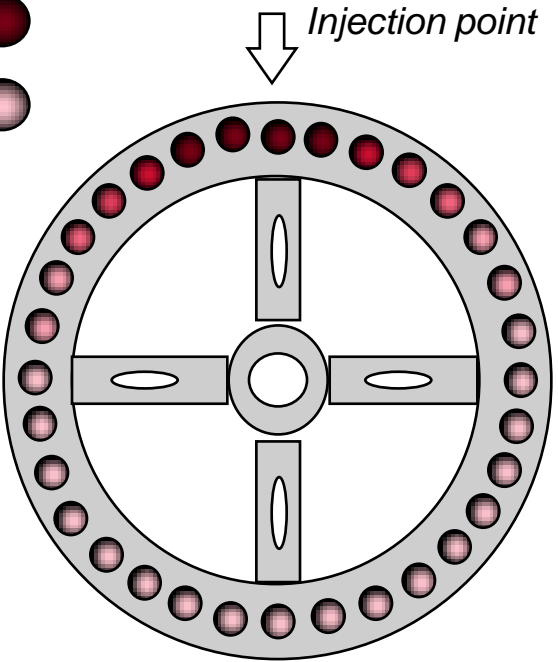
Dual Zone Autosampler

40 vial position carousel

Sample can be slowly stirred prior to injection

Two zone heating, minimized risk of sample degradation

Hot Zone 
Warm Zone 



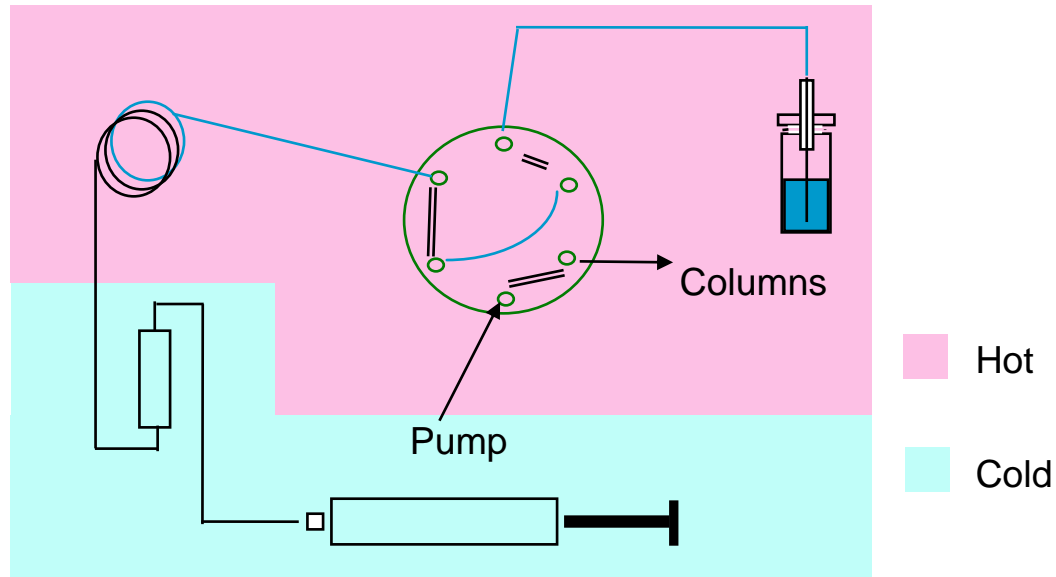
Injection system

- Vial is transported up to the column oven
- Vial equilibration time in the oven is programmable
- Excess solution returned to vial
- No risk of polymer precipitation.
- Injection precision RSD <1% with no cross contamination

Unique Injection System

Electrically actuated injection valve

Flushed fixed loop injection	Interchangeable loop volume, 5 - 500 μ l
Loop and valve in oven	Eliminates sample precipitation and blockages
No contact between solvent and syringe	Avoids sample carryover and contamination of syringe Extends lifetime and reduces maintenance required



Column Oven

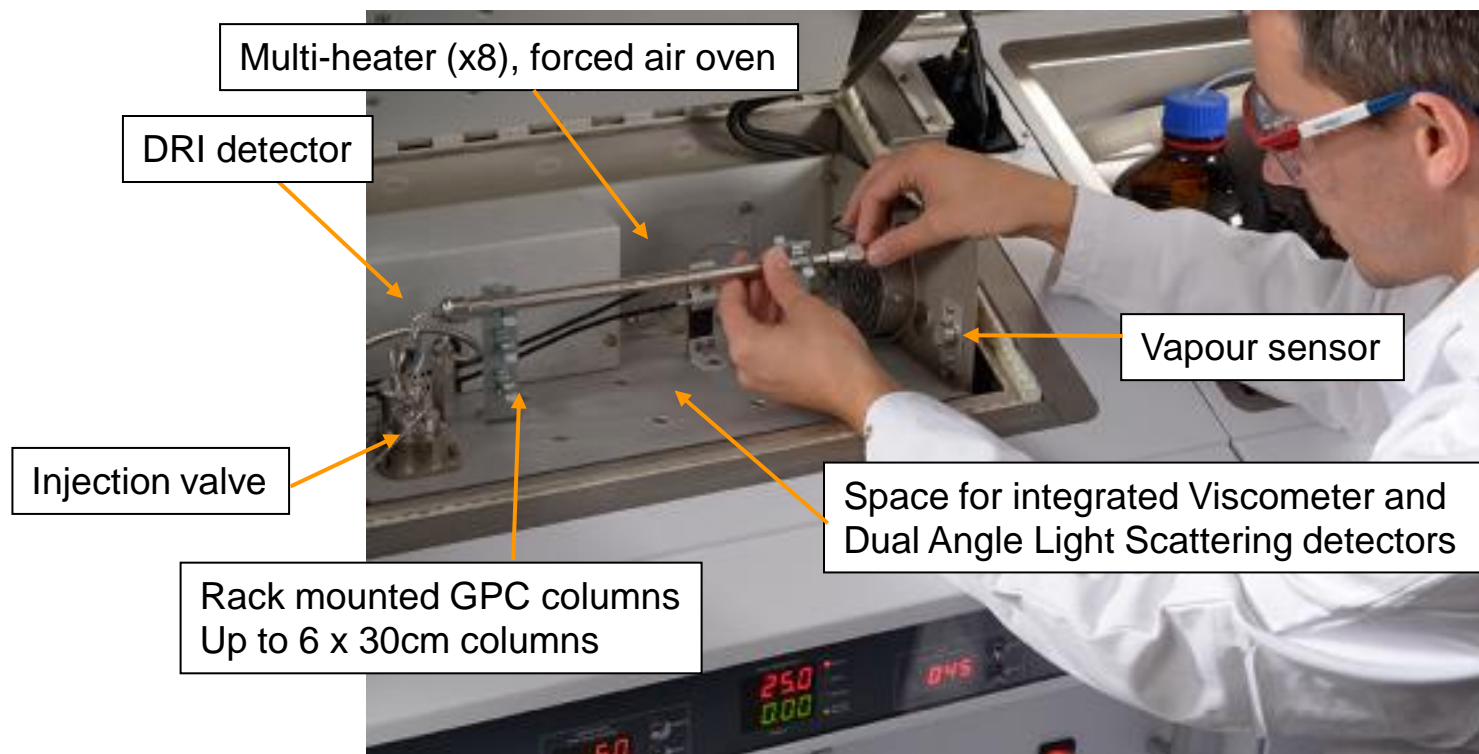
High temperature, precise column oven

Easy access for simple column change and routine maintenance

Fully enclosed system, complete outer surface of unit at safe temperature

Temperature range of ambient to 220 °C

Temperature stability: ≤ 0.05 °C/hour



Why Consider for Agilent PL-GPC 220 High Temperature GPC System ?

- The established HTGPC with over 370 installations worldwide
- The widest temperature range of any HTGPC (30-220degC) – all applications covered with no compromise on oven heating capability
- Oven heating capacity ideally suited for new development polyolefins which need 160-170degC analysis temperatures for accurate characterization
- Eluent is fully enclosed from solvent to waste – no vapours in laboratory
- The best pumping precision and reproducibility at the heart of the GPC system now available with the Agilent 1260 pump
- The most stable HT GPC oven available 0.05degC/hour drift unmatched by our competition
- True HT GPC integration, from injection to waste – no cold spots – no precipitation – reliable GPC

Points to Consider for Agilent PL-GPC 220 High Temperature GPC System

- Optimum performance from Agilent manufactured RI, Viscometer and LS detectors – low cell volumes and high sensitivity
- Very low cell volume and optimised optics from the most popular HT LS detector (Agilent PL 15/90 dual Angle LS)
- Minimum band broadening from all detectors with the lowest cell volumes available for excellent GPC analyses.
- Total Agilent support – security of supply and service with Agilent as your partner
- All products from the ‘Total’ GPC supplier



Agilent PL-GPC 220

Extreme Confidence

- **Safe in extreme conditions**

Integrated system with all sample carrying components operated up to 220 °C, for maintained sample solubility

- Eliminates costly system downtime due to blockages
- Maximizes operator safety

- **Confidence in Quality of Results**

- Dual zone autosampler minimises sample degradation.
- High precision Agilent 1260 Infinity pump ensures reproducible results
- Market leading low volume detector cells and minimal band-broadening.

- **Confidence in Capabilities**

- Ability to perform every available GPC application.
- Integrated Light Scattering and Viscometry detector options.
- Industry standard for high temperature GPC applications

A Comprehensive collection of Applications, Technical Notes and Teaching Aids to help.



Agilent 390 Multi Detector Suite

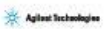
Data Sheet



Introduction
The Agilent 390 Multi-Detector Suite (MDS) is an integrated solution between past and future for gel permeation chromatography (GPC) applications in research, industry, the academic and pharmaceutical. The collection ranges up to three modules to suit applications for almost all types of GPC in a sophisticated setting. The 390 MDS can be configured to meet almost any GPC.

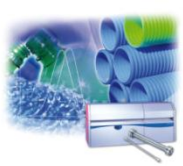
Key Benefits

- **Changeability** - Allow multiple detector (MDS) to be purchased, installed and changed.
- **Flexibility** - The instrument can be configured to software to be fit for multiple uses. The instrument can be used as a 390 MDS or as a multi-detector suite (MDS).
- **Connectivity** - Data from existing facilities can be interfaced through the 390 MDS.
- **High quality results** - Detector units are individually tested to maintain consistent quality.
- **Reliability** - Proven capability at our time to include additional detectors.
- **Safe** - Compact configuration and safe design which can enter the system. Also, monitoring through a primary technical support.



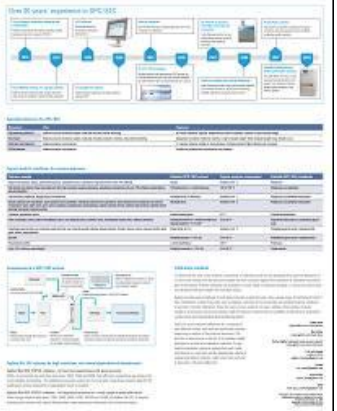
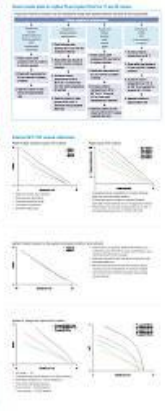
Engineering Polymers - Analysis of Engineering Polymers by GPC/SEC

Application Compendium



Gel Permeation Chromatography and Size Exclusion Chromatography Reference Guide

Get up to speed on the techniques involved in gel permeation chromatography and size exclusion chromatography. This reference guide covers the theory, instrumentation, and applications of these techniques. It includes a glossary of terms and a list of references.

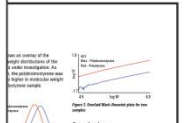


Analysis of Bromostyrene by GPC Triple Detection using the Agilent 390-LC Multi Detector Suite (MDS)

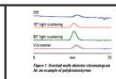
Application Note

Authors
Ding Guozhen, Agilent Technologies, Inc.

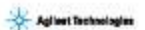
Introduction
The detection of trace concentrations of polymer may be modified to other such applications in the use of modified detectors, primary detector with the use of triple detection. Introduction of secondary detector is essential to the detection of polymer in the presence of other components. The detection of polymer in the presence of other components is essential to the detection of polymer in the presence of other components. The detection of polymer in the presence of other components is essential to the detection of polymer in the presence of other components.



Conclusion
The data in this application note demonstrate the use of GPC/SEC for the analysis of bromostyrene. The use of GPC/SEC for the analysis of bromostyrene is essential to the detection of polymer in the presence of other components.



An Introduction to Gel Permeation Chromatography and Size Exclusion Chromatography



Agilent GPC/SEC Solutions

Over 35 years of innovative contributions to GPC/SEC technology – we are the polymer analysis people

1976

PLgel columns, individual standards and standard kits

Polymer Laboratories founded to develop market-leading products for organic GPC/SEC

1981

PLgel MIXED columns, PL aquagel columns

MIXED columns improve data quality, and novel chemistries for analysis of water-soluble polymers

1984

GPC software

Dedicated software streamlines GPC/SEC calculations

1990

PL aquagel-OH columns

Vastly improve resolution and data quality in aqueous GPC/SEC

1993

EasiCal standards

New format shortens sample preparation time and the speed of calibration

1999

PL-GPC 220 instrument

Market-leading high temperature GPC system for routine analysis of even the most difficult samples by multi-detector GPC/SEC at temperatures up to 220 °C

2003

PL-GPC 50 instrument with light scattering and viscometry

Cost-effective solution to low temperature polymer analysis, including multi-detector GPC/SEC

2004

PlusPore columns and EasiVial standards

New chemistries deliver high-pore-volume materials for increased resolution, and EasiVial standards simplify calibration procedures even further

2007

PLgel Olexis columns

Optimized for polyolefin analysis with highest resolution and data quality for even ultra-high molecular weight samples

2009

MDS Multi Detector Suite and PolarGel columns

The MDS turns any LC into a powerful multi-detector GPC/SEC system, and PolarGel columns analyze polar samples in any solvent system

2011

Agilent GPC/SEC software

Creating a complete and comprehensive GPC/SEC instrumentation portfolio

Learn more: www.agilent.com/chem/gpc-sec



Agilent Technologies

Agilent Technologies Total GPC Solution

- GPC Columns



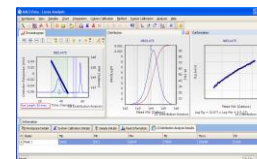
- GPC Standards



- GPC Instrumentation



- GPC Software



- GPC Expertise

CONTINUE THE CHAIN OF POLYMER INNOVATIONS IN GPC/SEC
The Measure of Confidence
[agilent.com/chem/gpcresources](http://www.agilent.com/chem/gpcresources)
Agilent Technologies

A graphic showing silhouettes of several people holding hands, symbolizing a chain of innovation.

We are the Polymer Analysis People
Download resources at www.agilent.com/chem/GPCresources
The Measure of Confidence
Agilent Technologies

A graphic showing a GPC column and a small vial.

Agilent Technologies



Agilent Technologies

Thanks for Listening

Any Questions

