



# Firestopping

Life Safety Solutions  
for AEC Professionals



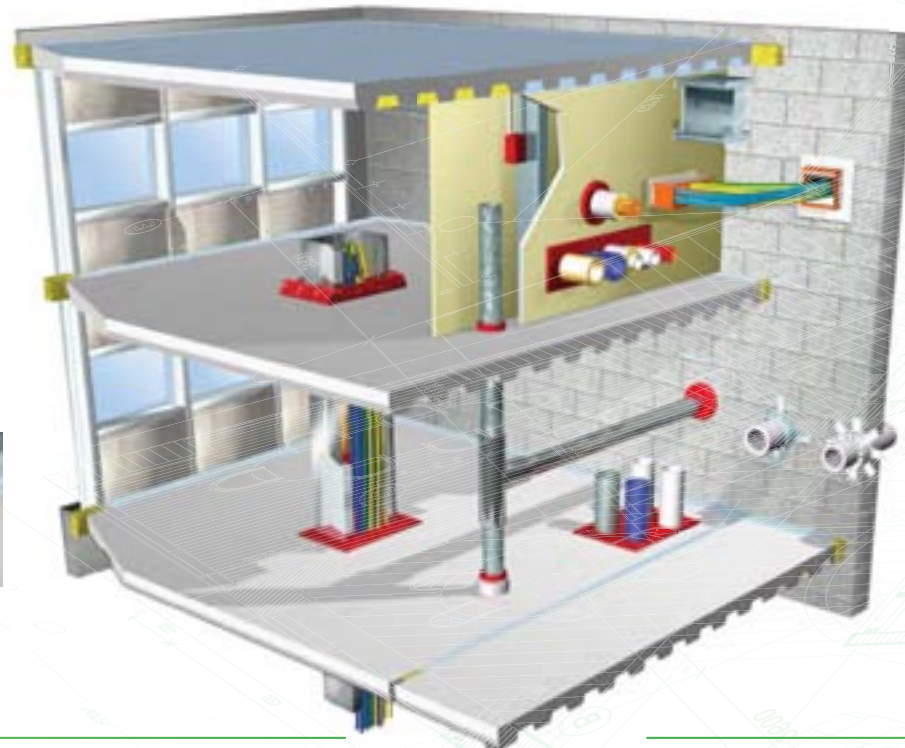


# Firestopping | Life Safety Solutions for AEC Professionals

STI...THE INDUSTRY LEADER COMMITTED TO OFFERING THE RIGHT PRODUCTS, TESTED SYSTEMS AND SPECIFICATION TOOLS TO GET THE JOB DONE RIGHT...THE FIRST TIME.

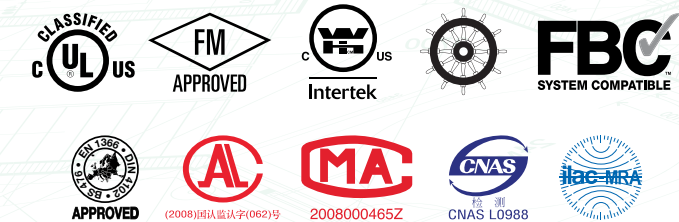
## Innovative, Patented Products

Specified Technologies Inc. (STI) offers firestop products designed to protect your building from fire and smoke spread in the event of a fire. They are also acoustically tested and are used to prevent the spread of harmful toxic fumes and gases. The SpecSeal® and EZ-Path® product lines are engineered to deliver outstanding fire protection systems that provide life cycle cost savings and long-term sustainability.



## Fully Tested Systems for Every Application

All major building codes require that each time a fire barrier is breached by a penetration or joint, the barrier must be restored to its original rating through the proper installation of a 3rd party tested firestop system. Underwriters Laboratories® is the most widely recognized and accredited 3rd party laboratory for firestop testing. STI boasts over 1200 UL Tested Systems, by far the most in the industry, and is the leader in designing systems to address actual field applications. STI products are UL Classified, FM approved and tested at Intertek, where applicable. Our technical staff of engineers is available to assist you with any system and application support you may need.



## American Owned, American Made, Global Presence.



STI is an industry leading firestop manufacturer with its headquarters located in Somerville, NJ, USA. American owned and operated since 1990, we have a strong commitment to manufacturing and assembling our products in the United States. However, we have offices in Latin America, Europe, the Middle East, India and China and representation everywhere else. Specify our products listed below with complete assurance of compliance with the requirements of the American Recovery and Re-investment Act (ARRA).

Over 98% of our products meet the requirements of the Buy American Act. Below is a list of our product categories that comply with this act.



Firestop Sealants	Firestop Sprays	Joint Sealants	Smoke & Acoustical Products
Firestop Duct Angle	Firestop Collars	Wrap Strip	EZ-Path® Fire Rated Pathway
Composite Sheet	Firestop Mortar	Firestop Putty	Putty Pads
Electrical Box Inserts	Firestop Sleeves	Cable Spray	T Rating Products
Firestop Plugs	Firestop Pillows	Firestop Grommets	Firestop Accessories

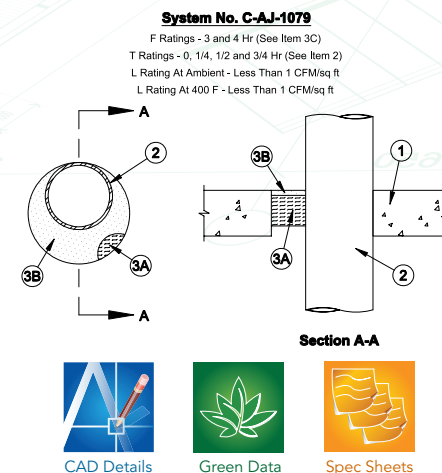
## AIA/CES

STI is an authorized AIA/CES Registered Provider with courses in the planning, design, and application of firestopping Through Penetrations, High Traffic™ Openings, Fire-Rated Construction Joints and Curtain Wall. Architects can earn AIA/CES continuing education "learning units" by attending qualified STI seminars, presentations and box lunch programs. Our courses offer hours of education that meet both the Health Safety & Welfare requirement, as well as the new AIA requirement for 4 hours of education in sustainable design. Our FIT1 course is worth 3 HSW units while our FIT2 course is worth 15 HSW units.

Visit [aia.org](http://aia.org) for a complete course offering.

## Specification Tools for AEC Professionals

STI offers specs in both 95 and 2004 formats on our website. Our general specifications can be downloaded directly from [stifirestop.com](http://stifirestop.com) or incorporated into your own spec through several online services such as, ARCAT®, MasterSpec® and e-specs®. STI also has Building Information Modeling (BIM) Objects created using Revit® software to support architectural designs using the 3D BIM approach. Visit [www.stifirestop.com/technical\\_library](http://www.stifirestop.com/technical_library) to incorporate these into your designs.



## stifirestop.com

STI offers a powerful search engine developed to provide Architects, Specifiers, and Designers with the most up to date information including:

- Submittal Builder™ - easily build your firestop submittals online
- UL Classified® firestop system search engine - locate a system by application type or system number
- CAD Details - available for every tested system
- Product Data Sheets and MSDS sheets - for complete documentation on your project
- Technical Bulletins - the latest trends in codes and products
- Suggested Specs - quick and easy access to our manufacturer specifications





LEED® Credits

LEED® For New Construction and Major Renovations v2.2

PRODUCT NAME	PRODUCT DESCRIPTION	APPROVALS
 INTUMESCENT SEALANT	<b>TRIPLE S® INTUMESCENT SEALANT</b> Premium grade intumescent firestop sealant featuring STI's patented two-stage intumescent technology. Triple S can be used in most common through-penetrations as well as a variety of membrane penetrations and construction joints.	 
	<b>LCI INTUMESCENT SEALANT</b> Standard grade intumescent firestop sealant engineered to economically address many common through-penetration applications in light commercial construction.	  
	<b>WF300 CAULK</b> Intumescent firestop caulk designed for sealing through-penetrations and gaps in fire resistance-rated wood frame construction.	 
 JOINT SEALANT	<b>LC150 ENDOTHERMIC SEALANT</b> High quality, non-halogenated firestopping sealant designed for non-combustible penetrants in through-penetrations and construction joints.	
	<b>SIL300 SILICONE SEALANT</b> A one-part, neutral curing silicone firestopping sealant designed for use in applications where properties such as excellent water-sealing, elasticity, or extended operating temperatures are required.	  
	<b>ES ELASTOMERIC SEALANT</b> Non-halogenated latex-based sealant designed to provide passive smoke and fire protection in construction joint applications.	 
 FIRESTOP SPRAY	<b>AS200 ELASTOMERIC SPRAY</b> Water-based, spray applied coating for joints, general construction and certain through-penetrations in fire-rated walls or floors.	  
	<b>FAST TACK™ SPRAY</b> Quick dry, firestop spray for use in curtain wall/ edge of slab, and general construction joints that are subject to movement.	
	<b>SMOKE &amp; ACOUSTICAL SEALANT</b> Sealant grade product for sealing openings in non-rated smoke barriers and partitions.	
	<b>SMOKE &amp; ACOUSTICAL SPRAY</b> Spray grade product for sealing openings in non-rated smoke barriers and partitions.	
	<b>SPEEDFLEX™ JOINT PROFILE</b> A quick, economical alternative to using strips of mineral wool forming material in the joint area between the fire-rated gypsum wallboard assembly and the bottom of a steel deck or concrete floor.	
 FIRESTOP COLLARS	<b>FYREFLANGE™ DUCT ANGLE</b> Duct support and firestopping in one product.	 
	<b>LCC, RTC &amp; SSC COLLARS</b> Ready-to-use firestop devices designed to collapse plastic pipe penetrations when exposed to fire conditions. †	 
	<b>BLU/BLU2 &amp; RED/RED2 WRAP STRIP</b> Intumescent, flexible wrap strips for through-penetrations. †	  
 PATHWAY DEVICES	<b>EZ-PATH® FIRE RATED PATHWAY</b> A mechanical cable pathway system utilizing a self-contained, self-sealing firestop system. Easy moves, adds, and changes with no firestopping required ever. Three sizes and a full range of accessories adapt this system to virtually any application.	 
	<b>COMPOSITE SHEET</b> Lightweight, firestop panels effectively seal medium to large openings with a variety of penetrants in fire-rated floors and walls.	 
	<b>SSM MORTAR</b> Lightweight, cementitious, compound suitable for openings of all sizes in fire-rated construction.	 
 CAST-IN DEVICES	<b>CAST-IN FIRESTOP DEVICE</b> Device to install on forms or deck in advance of concrete pour to form factory-firestopped openings for plumbing and electrical penetrations.	  
	<b>SSB PILLOWS</b> Intumescent firestop pillows expand in all directions for a tough, tight seal and easy retrofit for hard-to-fill, multiple penetrants, and large openings.	 
	<b>SSP PUTTY</b> Two-stage intumescent, non-hardening putty for cable and pipe penetrations. Ideal in small to medium sized applications that will require re-entry.	  
 FIRESTOP PILLOWS	<b>SSP PUTTY PADS</b> When used with both metallic and non-metallic switch and receptacle boxes, pads are UL Tested and Classified to permit larger boxes and reduced spacing.	  
	<b>EP POWERSHIELD™ BOX INSERTS</b> When used within metallic switch and receptacle boxes, inserts are UL tested and Classified to permit larger boxes and reduced spacing.	 
	<b>READY™ SLEEVE</b> Complete firestop sleeve assembly for new cable installations. Includes all mounting hardware and internal and external firestop sealing materials.	 
 FIRESTOP SLEEVE	<b>FIRESTOP PLUG</b> Designed for temporary or permanent interior sealing of metallic conduits and conduit sleeves through gypsum board walls or concrete/masonry walls.	
	<b>FIRESTOP GROMMET</b> Permanently seal small cable penetrations through gypsum board walls.	
	<b>CABLE SPRAY</b> Water-based, spray applied coating used to provide short term circuit integrity and improved flame spread characteristics for grouped electrical cables.	 

† Consult individual product data sheet for third party approvals.

†† CARB VOC (calculated), SCAQMD VOC (US EPA Method 24)

Section: Credit:		EA 1	MR 1.3	MR 2.1	MR 2.2	MR 3.1	MR 3.2	MR 4.1	MR 4.2	MR 5.1	MR 5.2	EQ PR 2	EQ 3.1	EQ 4.1	EQ 4.2	EQ 5	ID 1-4.4
RECYCLED CONTENT	CARB VOC / SCAQMD VOC††																
16% - 6% post consumer 10% post industrial	.40 wt. % / 29.2 g/L	✓		✓	✓			✓	✓			✓	✓	✓	✓	✓	✓
16% - 6% post consumer 10% post industrial	.42 wt. % / 32.7 g/L	✓		✓	✓			✓	✓			✓	✓	✓	✓	✓	✓
5% - 5% post consumer 0% post industrial	.36 wt. % / 53.0 g/L	✓		✓	✓			✓	✓			✓	✓	✓	✓	✓	✓
6% - 6% post consumer 0% post industrial	.46 wt. % / 57.0 g/L	✓		✓	✓			✓	✓			✓	✓	✓	✓	✓	✓
5% - 5% post consumer 0% post industrial	<1.9 wt. % / 27.0 g/L	✓		✓	✓			✓	✓			✓	✓	✓	✓	✓	✓
5% - 5% post consumer 0% post industrial	.53 wt. % / 43.0 g/L	✓		✓	✓			✓	✓			✓	✓	✓	✓	✓	✓
6% - 6% post consumer 0% post industrial	.48 wt. % / 10.0 g/L	✓		✓	✓			✓	✓			✓	✓	✓	✓	✓	✓
6% - 6% post consumer 0% post industrial	132.0 g/L	✓		✓	✓			✓	✓			✓	✓	✓	✓	✓	✓
5% - 5% post consumer 0% post industrial	.16 wt. % / 20.0 g/L	✓		✓	✓			✓	✓			✓	✓	✓	✓	✓	✓
5% - 5% post consumer 0% post industrial	.28 wt. % / 19.0 g/L	✓		✓	✓			✓	✓			✓	✓	✓	✓	✓	✓
	0 wt. % / 0 g/L	✓		✓	✓							✓	✓	✓	✓	✓	✓
	0 wt. % / 0 g/L			✓	✓							✓	✓	✓	✓	✓	✓
	0 wt. % / 0 g/L			✓	✓							✓	✓	✓	✓	✓	✓
	0 wt. % / 0 g/L			✓	✓							✓	✓	✓	✓	✓	✓
	0 wt. % / 0 g/L	✓	✓	✓	✓	✓	✓					✓	✓	✓	✓	✓	✓
	0 wt. % / 0 g/L	✓		✓	✓							✓	✓	✓	✓	✓	✓
24% - 19% post consumer 5% post industrial	0 wt. % / 0 g/L	✓		✓	✓			✓	✓			✓	✓	✓	✓	✓	✓
	0 wt. % / 0 g/L			✓	✓	✓	✓					✓	✓	✓	✓	✓	✓
21% - 21% post consumer 0% post industrial	0 wt. % / 0 g/L	✓	✓	✓	✓	✓	✓	✓	✓			✓	✓	✓	✓	✓	✓
	0 wt. % / 0 g/L	✓	✓	✓	✓	✓	✓					✓	✓	✓	✓	✓	✓
	0 wt. % / 0 g/L	✓	✓	✓	✓	✓	✓					✓	✓	✓	✓	✓	✓
	0 wt. % / 0 g/L	✓		✓	✓							✓	✓	✓	✓	✓	✓
	0 wt. % / 0 g/L	✓	✓	✓	✓	✓	✓					✓	✓	✓	✓	✓	✓
	0 wt. % / 0 g/L	✓		✓	✓							✓	✓	✓	✓	✓	✓
6% - 6% post consumer 0% post industrial	.65 wt. % / 35.0 g/L	✓		✓	✓	✓	✓	✓	✓			✓	✓	✓	✓	✓	✓

Many projects are located within 500 miles of the manufacturing location. Contact manufacturer for details. Toll Free: 800.992.1180

1. Encapsulate exposed fibers to reduce impact on IAQ. 2. Guard against mold and growth and mildew by taking steps to minimize water infiltration to reduce impact on IAQ. 3. Use firestop products that accommodate future expansion, thereby eliminating shipping additional products to the project, reintroducing VOCs, creating airborne contaminants when creating opening for new cables, etc.

Visit [stifirestop.com](http://stifirestop.com) to learn more about our rating system chart & how firestop products can contribute to LEED® credits on your next project



LEED® Credits

LEED® For New Construction and Major Renovations v3.0

PRODUCT NAME	PRODUCT DESCRIPTION	APPROVALS			
 INTUMESCENT SEALANT	TRIPLE S® INTUMESCENT SEALANT	Premium grade intumescent firestop sealant featuring STI's patented two-stage intumescent technology. Triple S can be used in most common through-penetrations as well as a variety of membrane penetrations and construction joints.			
	LCI INTUMESCENT SEALANT	Standard grade intumescent firestop sealant engineered to economically address many common through-penetration applications in light commercial construction.			
	WF300 CAULK	Intumescent firestop caulk designed for sealing through-penetrations and gaps in fire resistance-rated wood frame construction.			
 JOINT SEALANT	LC150 ENDOTHERMIC SEALANT	High quality, non-halogenated firestopping sealant designed for non-combustible penetrants in through-penetrations and construction joints.			
	SIL300 SILICONE SEALANT	A one-part, neutral curing silicone firestopping sealant designed for use in applications where properties such as excellent water-sealing, elasticity, or extended operating temperatures are required.			
	ES ELASTOMERIC SEALANT	Non-halogenated latex-based sealant designed to provide passive smoke and fire protection in construction joint applications.			
 FIRESTOP SPRAY	AS200 ELASTOMERIC SPRAY	Water-based, spray applied coating for joints, general construction and certain through-penetrations in fire-rated walls or floors.			
	FAST TACK™ SPRAY	Quick dry, firestop spray for use in curtain wall/ edge of slab, and general construction joints that are subject to movement.			
	SMOKE & ACOUSTICAL SEALANT	Sealant grade product for sealing openings in non-rated smoke barriers and partitions.			
	SMOKE & ACOUSTICAL SPRAY	Spray grade product for sealing openings in non-rated smoke barriers and partitions.			
	SPEEDFLEX™ JOINT PROFILE	A quick, economical alternative to using strips of mineral wool forming material in the joint area between the fire-rated gypsum wallboard assembly and the bottom of a steel deck or concrete floor.			
 FIRESTOP COLLARS	FYREFLANGE™ DUCT ANGLE	Duct support and firestopping in one product.			
	LCC, RTC & SSC COLLARS	Ready-to-use firestop devices designed to collapse plastic pipe penetrations when exposed to fire conditions. †			
	BLU/BLU2 & RED/RED2 WRAP STRIP	Intumescent, flexible wrap strips for through-penetrations. †			
 PATHWAY DEVICES	EZ-PATH® FIRE RATED PATHWAY	A mechanical cable pathway system utilizing a self-contained, self-sealing firestop system. Easy moves, adds, and changes with no firestopping required ever. Three sizes and a full range of accessories adapt this system to virtually any application.			
	COMPOSITE SHEET	Lightweight, firestop panels effectively seal medium to large openings with a variety of penetrants in fire-rated floors and walls.			
	SSM MORTAR	Lightweight, cementitious, compound suitable for openings of all sizes in fire-rated construction.			
 CAST-IN DEVICES	CAST-IN FIRESTOP DEVICE	Device to install on forms or deck in advance of concrete pour to form factory-firestopped openings for plumbing and electrical penetrations.			
	SSB PILLOWS	Intumescent firestop pillows expand in all directions for a tough, tight seal and easy retrofit for hard-to-fill, multiple penetrants, and large openings.			
	SSP PUTTY	Two-stage intumescent, non-hardening putty for cable and pipe penetrations. Ideal in small to medium sized applications that will require re-entry.			
 FIRESTOP PILLOWS	SSP PUTTY PADS	When used with both metallic and non-metallic switch and receptacle boxes, pads are UL Tested and Classified to permit larger boxes and reduced spacing.			
	EP POWERSHIELD™ BOX INSERTS	When used within metallic switch and receptacle boxes, inserts are UL tested and Classified to permit larger boxes and reduced spacing.			
	READY® SLEEVE	Complete firestop sleeve assembly for new cable installations. Includes all mounting hardware and internal and external firestop sealing materials.			
 FIRESTOP SLEEVE	FIRESTOP PLUG	Designed for temporary or permanent interior sealing of metallic conduits and conduit sleeves through gypsum board walls or concrete/masonry walls.			
	FIRESTOP GROMMET	Permanently seal small cable penetrations through gypsum board walls.			
	CABLE SPRAY	Water-based, spray applied coating used to provide short term circuit integrity and improved flame spread characteristics for grouped electrical cables.			

† Consult individual product data sheet for third party approvals.

†† CARB VOC (calculated), SCAQMD VOC (US EPA Method 24)

		Section: Credit:	EA 1	MR 1.2	MR 2	MR 3	MR 4	MR 5	IEQ PR 2	IEQ 3.1	IEQ 3.2	IEQ 4.1	IEQ 5	IEQ 7.1	ID 1
RECYCLED CONTENT	CARB VOC / SCAQMD VOC††														
18% - 6% post consumer 12% post industrial	.40 wt. % / 29.2 g/L	✓		✓		✓			✓	✓	✓	✓	✓	✓	✓
10% - 6% post consumer 4% post industrial	.42 wt. % / 32.7 g/L	✓		✓		✓			✓	✓	✓	✓	✓	✓	✓
5% - 5% post consumer 0% post industrial	.36 wt. % / 53.0 g/L	✓		✓		✓			✓	✓	✓	✓	✓	✓	✓
6% - 6% post consumer 0% post industrial	.46 wt. % / 57.0 g/L	✓		✓		✓			✓	✓	✓	✓	✓	✓	✓
5% - 5% post consumer 0% post industrial	<1.9 wt. % / 27.0 g/L	✓		✓		✓			✓	✓	✓	✓	✓	✓	✓
5% - 5% post consumer 0% post industrial	.53 wt. % / 43.0 g/L	✓		✓		✓			✓	✓	✓	✓	✓	✓	✓
6% - 6% post consumer 0% post industrial	.48 wt. % / 10.0 g/L	✓		✓		✓			✓	✓	✓	✓	✓	✓	✓
6% - 6% post consumer 0% post industrial	132.0 g/L	✓		✓		✓			✓	✓	✓	✓	✓	✓	✓
5% - 5% post consumer 0% post industrial	.16 wt. % / 20.0 g/L	✓		✓		✓			✓	✓	✓	✓	✓	✓	✓
5% - 5% post consumer 0% post industrial	.28 wt. % / 19.0 g/L	✓		✓		✓			✓	✓	✓	✓	✓	✓	✓
	0 wt. % / 0 g/L	✓		✓					✓	✓	✓	✓	✓	✓	✓
	0 wt. % / 0 g/L		✓	✓	✓	✓					✓	✓			✓
	0 wt. % / 0 g/L		✓	✓	✓	✓					✓	✓			✓
	0 wt. % / 0 g/L		✓	✓	✓	✓					✓	✓			✓
	0 wt. % / 0 g/L	✓	✓	✓	✓	✓			✓	✓	✓	✓	✓	✓	✓
	0 wt. % / 0 g/L	✓	✓	✓	✓	✓			✓	✓	✓	✓	✓	✓	✓
24% - 19% post consumer 5% post industrial	0 wt. % / 0 g/L	✓		✓			✓		✓	✓	✓	✓	✓	✓	✓
	0 wt. % / 0 g/L	✓	✓	✓	✓	✓			✓	✓	✓	✓	✓	✓	✓
21% - 21% post consumer 0% post industrial	0 wt. % / 0 g/L	✓	✓	✓	✓	✓	✓		✓	✓	✓	✓	✓	✓	✓
	0 wt. % / 0 g/L	✓	✓	✓	✓	✓			✓	✓	✓	✓	✓	✓	✓
	0 wt. % / 0 g/L	✓	✓	✓	✓	✓			✓	✓	✓	✓	✓	✓	✓
	0 wt. % / 0 g/L			✓							✓	✓			✓
	0 wt. % / 0 g/L	✓	✓	✓	✓	✓			✓	✓	✓	✓	✓	✓	✓
	0 wt. % / 0 g/L	✓	✓	✓	✓	✓			✓	✓	✓	✓	✓	✓	✓
	0 wt. % / 0 g/L	✓		✓					✓	✓	✓	✓	✓	✓	✓
6% - 6% post consumer 0% post industrial	.65 wt. % / 35.0 g/L	✓		✓			✓		✓	✓	✓	✓	✓	✓	✓

Many projects are located within 500 miles of the manufacturing location. Contact manufacturer for details.

1. Encapsulate exposed fibers to reduce impact on IAQ. 2. Guard against mold and growth and mildew by taking steps to minimize water infiltration to reduce impact on IAQ. 3. Use firestop products that accommodate future expansion, thereby eliminating shipping additional products to the project, reintroducing VOCs, creating airborne contaminants when creating opening for new cables, etc.

Visit [stifirestop.com](http://stifirestop.com) to learn more about our rating system chart & how firestop products can contribute to LEED® credits on your next project





SOMERVILLE, NJ 08876 USA • T: 800.992.1180 • F: 908.526.9623 • [WWW.STIFIRESTOP.COM](http://WWW.STIFIRESTOP.COM)  
ZSTI3397 • REV: 06/2011

SpecSeal® and EZ-Path® are registered trademarks of Specified Technologies Inc.  
High-Traffic™ is a trademark of Specified Technologies Inc.  
ARCAT® is a registered trademark of ARCAT Inc.  
MasterSpec® and sPECS® are registered trademarks of ARCOM  
LEED® is a registered trademark of the United States Green Building Council  
Revit® is a registered trademark of Autodesk Inc.