



**Agrident GmbH, Steinklippenstr. 10, D-30890 Barsinghausen
Phone +49 5105 582573-10 - Fax +49 5105 582573-17**

AIR300 Hardware Manual for Motorola Workabout Pro-G3



V22/01/13

© Copyright 2014 by Agrident GmbH

TB

All rights reserved. No part of this publication may be reproduced, stored in a retrieval system, or transmitted, in any form or by any means, electronic, mechanical, photocopying, recording or otherwise, without prior written permission of Agrident GmbH.

Agrident GmbH reserves the right to make changes to any and all parts of this documentation without obligation to notify any person or entity of such changes.

January 2014

Agrident GmbH
Steinklippenstr. 10
30890 Barsinghausen
Germany
Phone +49 (0) 51 05 582573-10
Fax +49 (0) 51 05 582573-17
E-Mail: mail@agrident.com
www.agrident.com

Content

1 Introduction..... 4

2 Installation of the AIR300 LF-RFID-Reader..... 4

3 Reading transponders 6

4 Using an external antenna..... 8

5 Trouble shooting..... 11

1 Introduction

The Agrident Integrated Reader 300 (AIR300) is a Low Frequency RFID reader working on 134.2KHz, which is designed for the Motorola Workabout Pro - generation 4. It is backwards compatible to the generations 2 and 3. Since this reader is using the internal USB port for power supply and communication, it cannot be used with generation 1 of the Workabout Pro, which does not have an internal USB connector.

Mechanically the AIR300 is using the expansion end cap of the Workabout Pro. That means that it is physically not possible to operate the reader together with other expansion modules that are using the extended end cap position.

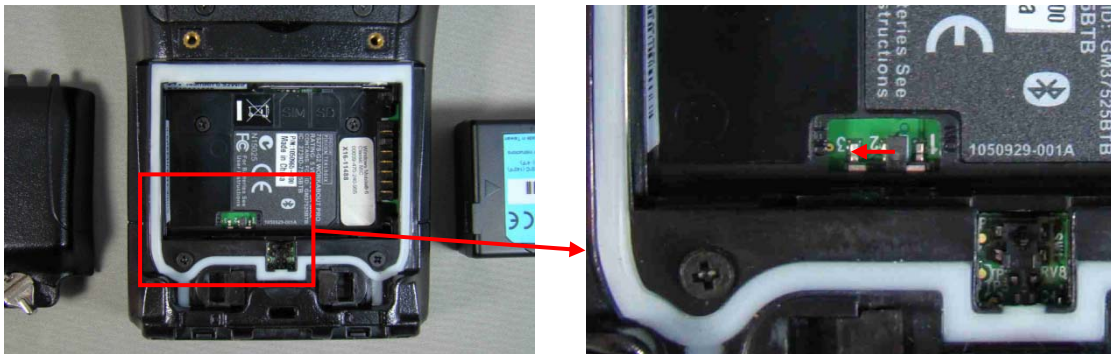
For all approval and safety information please visit www.motorola.com or contact your local Motorola distributor.

2 Installation of the AIR300 LF-RFID-Reader

The following installation instructions refer to the WORKABOUT PRO G3 – short version. The instructions and pictures might vary for the long version and for other generations of the Workabout Pro. Please also see the corresponding Workabout Pro documents for details. Currently the manuals for all generations of the WORKABOUT PRO are available for download here: <http://community.psim.com/knowledge/w/knowledgebase/562.workabout-pro-product-manuals.aspx>

Before installing a module in the WORKABOUT PRO G3, all power sources must be turned off. If your unit is using AC power, disconnect it. Now please remove the battery cover and the battery.

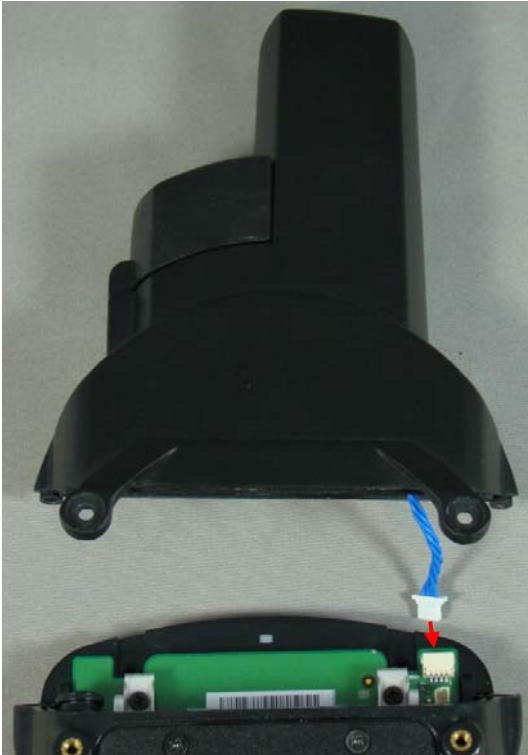
Slide the switch to position OFF (to the left) in order to shut off internal battery power.



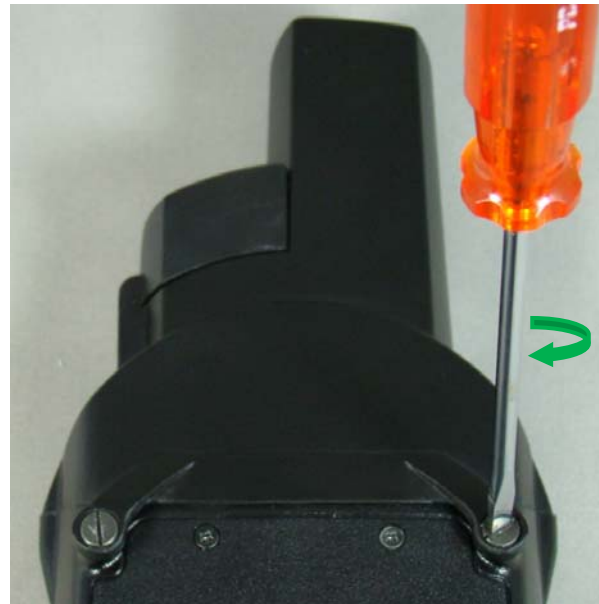
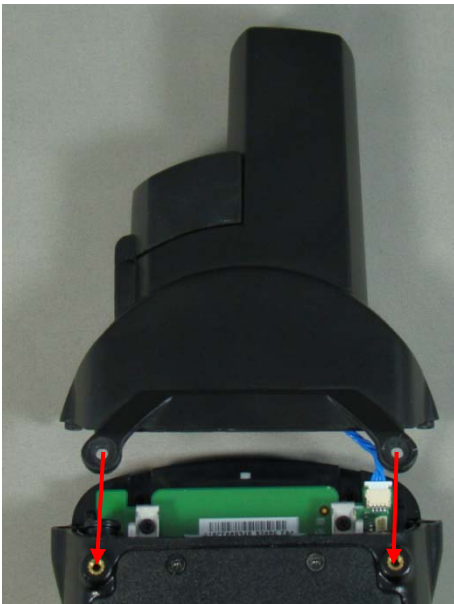
With the power shut down, you can install the RFID Module AIR300.

Remove the end cap at the top of the WORKABOUT PRO G3.

Connect the USB connector.



Attach the AIR300 housing to the WORKABOUT PRO. Please fix the AIR300 housing with the two provided M2.5x6 flat-head screws. If you are using the hand strap for the WORKABOUT PRO, please use the provided 10 millimeter screws instead.



Fix the four screws that were used for mounting the original end cap of the WORKABOUT PRO into the corresponding holes AIR300 housing.



Please slide the switch in the battery compartment into the ON position to turn power back on. Insert the battery and attach the cover plate. You may now switch on your WORKABOUT PRO. Refer to the manual for your management software concerning details about reading transponders.

3 Reading transponders

If the AIR300 is activated from your software, the LED is blinking red slowly. If a transponder is being read, the LED color will change to green.



RF is activated but no tag is in range



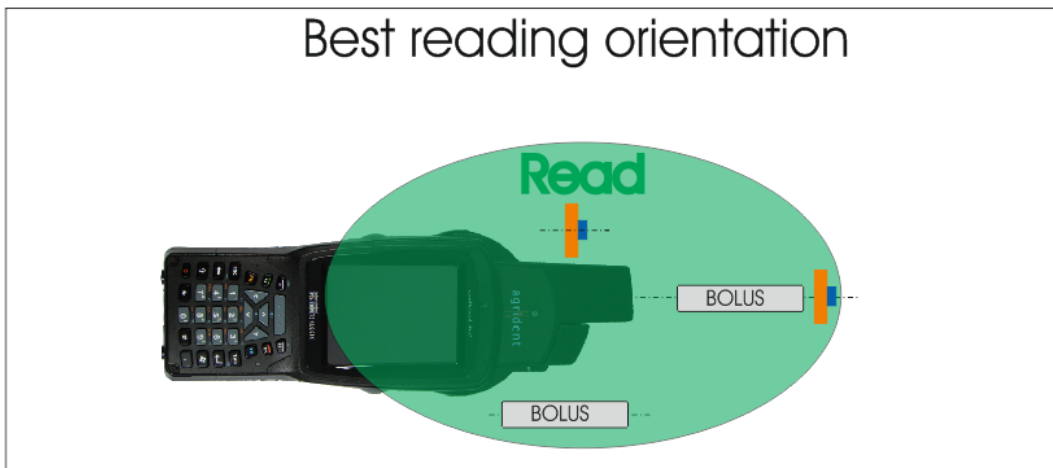
RF is activated and a tag is in being read

The green LED is blinking very fast if a tag is read. It is switched on each time the reader detects the transponder. If your software is switching off the AIR300 directly after reading, you might only see the LED flashing green once.

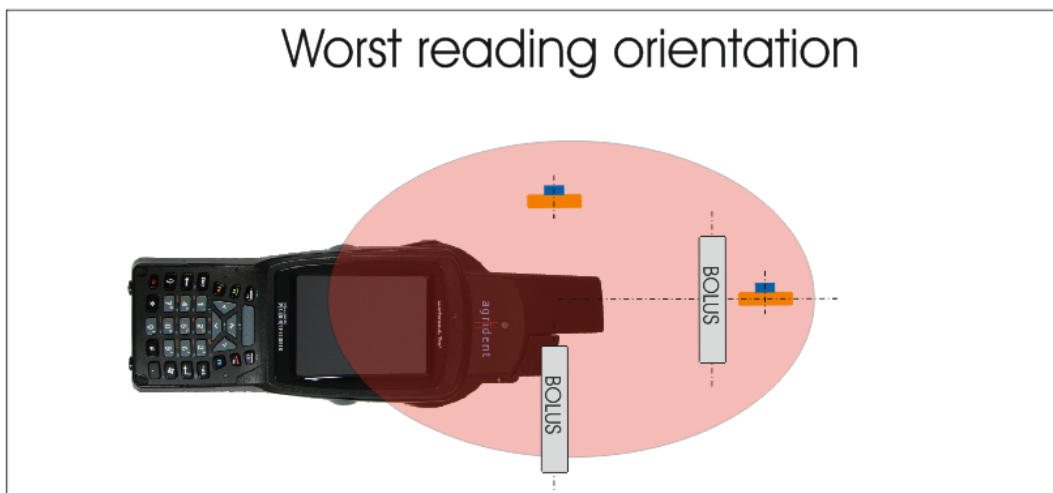
The reading range depends on tag type and tag orientation. The following picture shows the field distribution of the AIR300 antenna:



As a result, there is an optimum orientation:

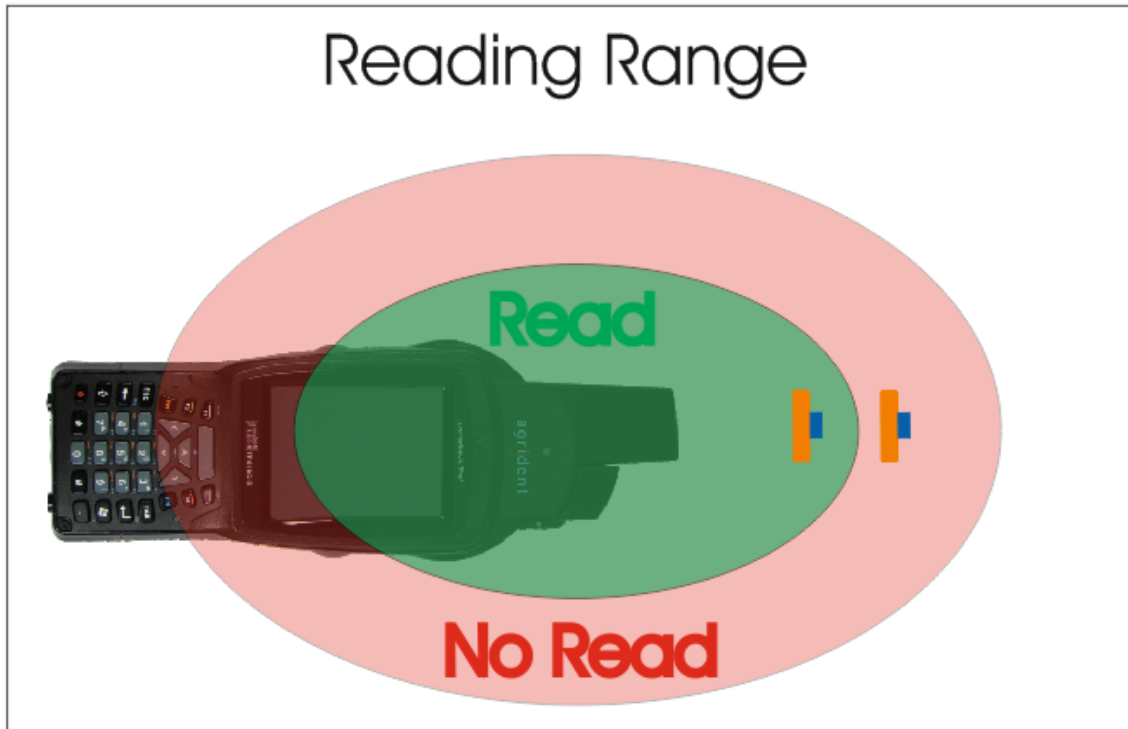


... and an unfavorable orientation:



Since Boluses also contain small glass tags, the reading range for injectables is the same as shown for the Boluses.

The reading ranges are up to 25 centimeters for large, high quality transponders. For small injectable tags (like used for pets, e.g. 2x12mm), the reading ranges are much smaller. This is due to physical laws and thus cannot be changed.



The optional external antennas also contain a ferrite rod. Hence the reading characteristics are similar to the AIR300 internal antenna.

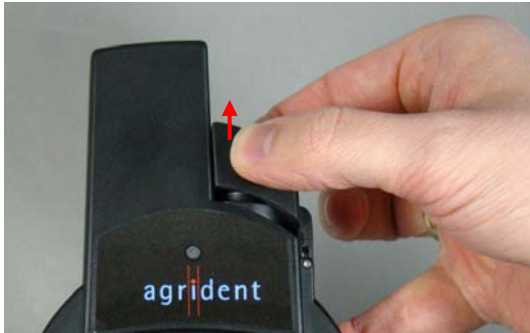
4 Using an external antenna

Agrident also provides external antennas for the AIR300, for example the AEA580. External antennas extend the physical read range while the electrical characteristics are similar to the internal antenna.



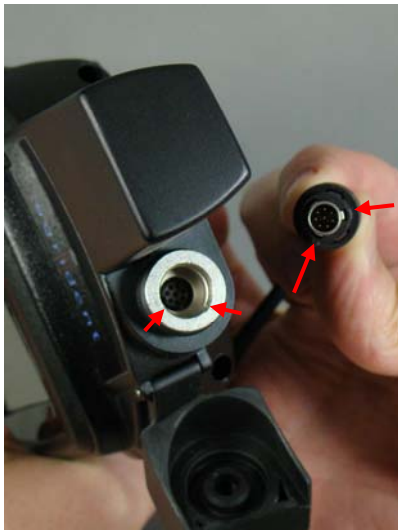
This antenna can be connected to the AIR300 by using the external antenna connector on top of the reader.

Remove the protection cap from the external antenna plug by pulling it to the top first. Now it can be folded to the side.



The antenna connector fits into the AIR300's socket in only one position. Therefore the grooves in the socket and the notches in the cable connector have to match.

Insert the antenna connector into the plug in the correct position and press it down until it is snapped in.

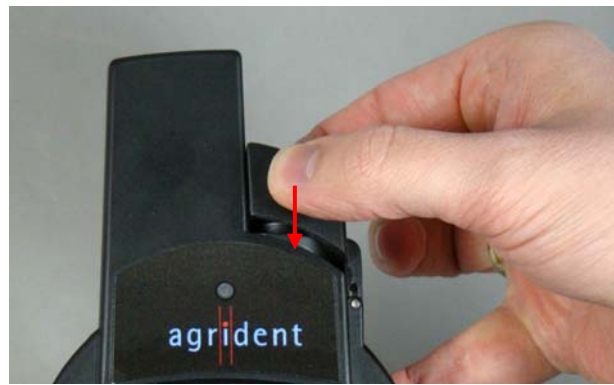


The push-pull locking style offers a quick and safe connection. The AIR300 automatically detects the presence of an external antenna. In this case only the external antenna will be used, the internal one is disabled. If the external antenna is removed, the reader will use the integrated antenna again as soon as a new reading attempt is started.

When removing the external antenna from the reader, please pull the sleeve of the connector back in order to unlock the connection. Do not pull the cable – this does not remove the antenna connector!



After removing the external antenna connector from the reader, it is very important to attach the protection cap again in order to protect the connector and the AIR300 electronics from moisture and dust. Therefore please fold the protection cap back into the direction of the internal antenna and press it down into the initial position.



5 Trouble shooting

For any problem please contact us:

Agrident GmbH
Steinklippenstr. 10
30890 Barsinghausen
Germany

Telephone +49 5105 582573-10
FAX +49 5105 582573-17

Mail: support@agrident.com