

Aladdin & His Winter Wish

Produced by
NC THEATRE
THE LYTHGOE FAMILY

Directed by David Vaughn
Written by Kris Lythgoe

2018



ALADDIN



AN AMERICAN PANTO

LYTHGOE FAMILY PRODUCTION • STUDY GUIDE

ALADDIN STUDY GUIDE 2018

Dear Teachers,

Thank you very much for bringing your class to see our production of ***Aladdin and His Winter Wish***. We hope that you all enjoy it!

We believe that experiencing theater is essential for children to thrive and it is the initiative of teachers like you that enables us to reach children who may not otherwise have this unique opportunity.

Our productions fall under the musical theatre genre of *American Panto*[™]. This means they are fun, magical and interactive! We expect your students to make a lot of noise as they cheer the hero and boo the baddie.

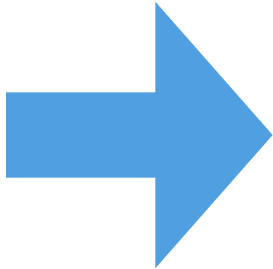
We have provided this study guide to help bring your upcoming theatre experience into the classroom should you have time for special activities before or after your trip. In addition to the activities throughout this guide, there is also information on Lythgoe Family Productions and the many ways that we bring theatre to students across America.

We hope you find our suggestions fun, educational and adaptable. In our commitment to better serve you, we welcome any suggestions you may have.

Thank you again and we look forward to entertaining you at the show.

Have a magical day,

Lythgoe Family Productions



LFP STAGE GUIDE

Lythgoe Family Productions creates study guides to further enhance students' theatrical experiences. The study guides contain various discussion questions, projects and activities that encourage students to engage in literary analysis, historical research and personal reflection with parents and/or teachers that will hopefully foster a love and appreciation of musical theatre.



ALADDIN is suitable
for all ages

ALADDIN & HIS WINTER WISH

ABOUT ALADDIN

Aladdin is a Middle Eastern folk tale and the most famous from the 'Book of One Thousand and One Nights' (Arabian Nights). Aladdin, a street rat discovers a magical lamp for an evil sorcerer. Though Aladdin refuses to give the lamp to the sorcerer he does not know its power. He later discovers that the lamp grants his wishes and with the aide of the genie becomes a powerful prince and marries the Princess. The sorcerer hears of this powerful Prince and returns to take back the lamp. Aladdin defeats the sorcerer and he lives happily ever after with his Princess.

ALADDIN AND HIS CHRISTMAS WISH

ABOUT LFP

LYTHGOE FAMILY PRODUCTIONS was formed for the purpose of bringing professional theatre and entertainment to schools and the whole family. The Lythgoe family are well known for creating family entertainment on television including America's number one show *AMERICAN IDOL* and *SO YOU THINK YOU CAN DANCE*.

Director, Bonnie Lythgoe is an entertainment industry success story. With a career spanning more than 20 years, Bonnie's achievements as a dancer, choreographer, TV presenter, TV producer and Broadway producer are second to none. A variety of choreography and directing roles followed including *Snow White* [London], *Seven Brides for Seven Brothers* [London], *The Best Little Whore House in Texas*, *The Real Monty*, *Cinderella*, *Peter Pan*, *Aladdin* and *The Royal Variety* for HRH Queen Elizabeth.

Kris Lythgoe is the Executive Vice President of Magic Pictures International based in Los Angeles. TV Credits include Executive Producer of *Corkscrewed*, Fox Reality, Executive Producer *Who Are You?* for Fox, *On The Nose* for TVG, Co-coordinating Producer *So You Think You Can Dance* (USA) for FOX and Consulting Producer for SYTYCD Canada, guiding CTV in establishing the franchise. Theatre Producing credits include *CINDERELLA*, *SNOW WHITE*, *ALADDIN*, *FOOTLOOSE* West End and *THE WEDDING SINGER*.

For more information please visit www.americanpanto.com

TABLE OF CONTENTS

ALADDIN: A HISTORY	5
BEHIND THE SCENES: A PANTO	5
ALADDIN PANTO CHARACTERS	7
ALADDIN PANTO SHOW	8
PUTTING ON A PANTO	9

LEARNING ACTIVITIES

BEFORE YOU SEE ALADDIN	10
AFTER YOU SEE ALADDIN	11
THEATRE IMPROVISATION.....	12

ALADDIN: A HISTORY

MOVIE TIMELINE

1709 Aladdin translated to English

1788 John O'Keefe turns Aladdin into a Panto

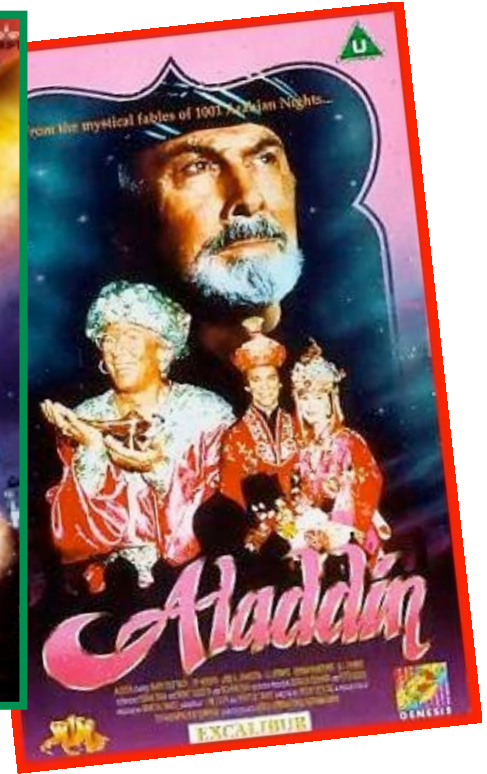
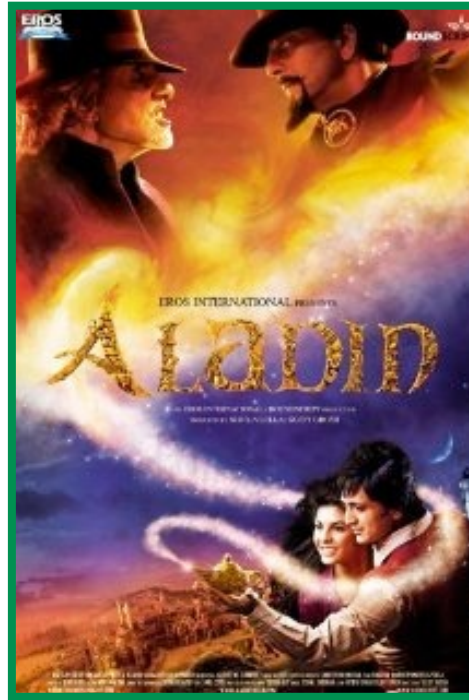
1959 Animated film produced by UPA.

1979 Musical Aladdin Premieres.

1982 Aladdin and the Wonderful Lamp movie released

1990 Aladdin directed by Mickey Dolenz released as a movie for TV

1992 Animated movie Aladdin is released by Disney.



ALADDIN - Who Wrote it?

No Arabic source has been traced for the tale, which was incorporated into the book *Les Mille et Une Nuits* by its French translator, Antoine Galland, who heard it from a Syrian storyteller from Aleppo. Galland's diary (March 25, 1709) records that he met the Maronite scholar, by name Youhenna Diab ("Hanna"), who had been brought from Aleppo to Paris by Paul Lucas, a celebrated French traveller. Galland's diary also tells that his translation of "Aladdin" was made in the winter of 1709–10. It was included in his volumes ix and x of the *Nights*, published in 1710. John Payne, in *Aladdin and the Enchanted Lamp and Other Stories*, (London 1901), gives details of Galland's encounter with the man he referred to as "Hanna" and the discovery in the Bibliothèque Nationale in Paris of two Arabic manuscripts containing *Aladdin* (with two more of the "interpolated" tales). One is a jumbled late 18th century Syrian version. The more interesting one, in a manuscript that belonged to the scholar M. Caussin de Perceval, is a copy of a manuscript made in Baghdad in 1703. It was purchased by the Bibliothèque Nationale at the end of the nineteenth century.

ALADDIN - In the original story

The original story ends with the sorcerer's more powerful and evil brother trying to destroy Aladdin for killing his brother by disguising himself as an old woman known for her healing powers. Princess Badroulbador (now known as Jasmine) falls for his disguise, and commands the "woman" to stay in her palace in case of any illnesses. Aladdin is warned of this danger by the genie of the lamp and slays the impostor. Everyone lives happily ever after, Aladdin eventually succeeding to his father-in-law's throne.

OTHER VERSIONS:

OPERA

MUSICAL THEATRE

FILM

TELEVISION

ANIMATION

BEHIND THE SCENES: A PANTO

AMERICAN PANTO

WHAT IS A PANTO?

Musical comedy theatrical production traditionally found in the [United Kingdom](#), Canada, Jamaica, South Africa, Japan, India, Ireland, Gibraltar and Malta, and is performed during the Christmas and New Year period. They are based on children's fairytale stories. The most popular subjects for Pantos include the historical tales of Cinderella, Snow White, Aladdin, Jack and the Beanstalk, Beauty and the Beast, Robin Hood and Mother Goose. Panto scripts are rewritten every year and include music sourced from Billboard Charts, so that each production remains current and for today's market.

www.AMERICANPANTO.com

PANTO'S ARE INTERACTIVE WITH THE AUDIENCE. THE CROWDS ARE ENCOURAGED TO SHOUT OUT AND PARTICIPATE IN THE SHOW.

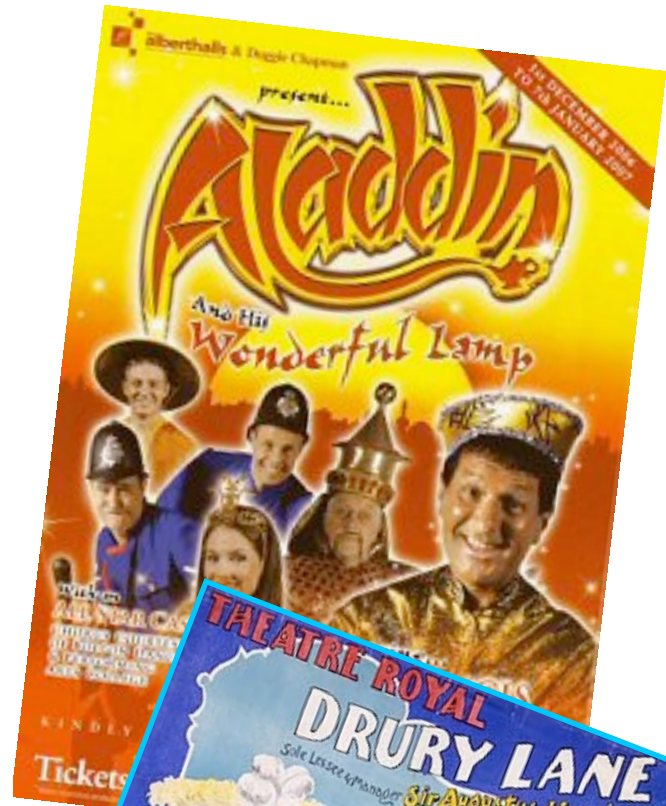
HISTORY OF THE PANTO

A 'panto' in Ancient Greece was a group who 'imitates all' accompanied by songs and instrumental music, often played on the flute. The word later came to be applied to the performance itself. The panto was a popular form of entertainment in ancient Greece and, later, Rome.

The style and content of the modern panto have very clear and strong links with the Commedia dell'arte, a form of popular theatre that arose in Italy in the Early Modern Period and which reached England by the 16th century.

The great clown Grimaldi transformed the format. Each story had the same fixed characters: the lovers, father, servants (one being crafty and the other stupid), etc. These characters are still found in today's pantos.

The first Cinderella Panto in England was the 1804 production at Drury Lane.



ALADDIN - AMERICAN PANTO

THE CHARACTERS

ALADDIN

A street rat, diamond in the rough, the only boy who can enter the cave and get the lamp.

SULTAN

Knows more info than wikipedia and google put together!

WISHEE WASHEE

Aladdin's brother who has trouble making up his mind.

WIDOW TWANKEY

Mother to Aladdin and Wishee Washee. She is a lovable bundle of fun.

ABANAZAR

Evil Magician who wants the lamp and to hurt Aladdin and the Princess.



THE GENIE

The genie grants your wishes, just rub the lamp to free it!

PRINCESS

The Princess who marries Aladdin.

SPIRIT OF THE RING

A genie with limited powers, one rub of the magic ring and she is there to do as you command.

PLEASE NOTE THE ACTORS IN THIS PICTURE WILL NOT BE THOSE PERFORMING

ALADDIN - AMERICAN PANTO

THE SHOW

DANCING

High energy dancing throughout the show, from trained professional dancers.

PUPPETS

Puppets are in the story portraying animals from the Arabian peninsula.

MAGIC

The evil magician regularly uses magic that will leave you mesmerized through out the show.

COMEDY

Widow Twankey and Wishee Washee are the jokers in the show.

INTERACTIVITY

Characters interact with the audience encouraging them to partake in 'catching the rat'.

MUSIC

ACT ONE

JAI HO

I'M TOO SEXY

BREAK MY STRIDE

YOU DON'T KNOW ME

OLD TIME ROCK AND ROLL

UPTOWN GIRL

CALL ME MAYBE

BILLIONAIRE

FANTASY

TREASURE

VIVA LA VIDA

BEAUTIFUL

NOTHING'S GONNA STOP US

WALKING ON SUNSHINE

WONDERFUL TIME OF THE YEAR

ENSEMBLE

WIDOW TWANKEY

ALADDIN AND WISHEE

ALADDIN

WIDOW TWANKEY

ALADDIN

PRINCESS

ALADDIN AND GENIE

GENIE AND ENSEMBLE

ACT TWO

ENSEMBLE

ABANAZAR

ALADDIN

ALADDIN AND PRINCESS

ENSEMBLE

ENSEMBLE

ALADDIN - AMERICAN PANTO

Whether you're a stage manager, actor, director, costume designer or composer, when it comes to putting on a PANTO, all roles are important. Here's a guide for putting on the perfect PANTO.

FIND THE PERFECT PANTO

The Producers find the perfect panto that entertains and that people want to buy tickets to. They also plan the budget and rent the theatre, paying royalties to the composer, lyricist and script writer. Panto's are based on historical fairytales which include Cinderella, Aladdin, Snow White, Peter Pan and many many more. They have all these wonderful stories to choose from.

Please visit www.americanpanto.com for more information.

GATHER THE CREATIVE TEAM

The producer gathers the creative team including the director, choreographer, set designer, costume designer, and music director/conductor. Together they discuss their vision for the show and how they will bring it to life on the stage.

AUDITION AND REHEARSAL

The director and choreographer hold auditions for the parts in the show. For most Panto's, actors must be a part of the Actors Equity Association and have an appointment, but sometimes an open call will be held. After the cast has been chosen, rehearsals begin. Actors must memorize their lines, songs and choreography before dress rehearsals and the show's opening.

PERFORM FOR AN AUDIENCE

If the show looks good after previews, it will open. Most Panto's are performed twice a day. A 3pm matinee and a 7pm show and actors have only one day off in the week. It is a limited run generally around 4 weeks and is always over the Holiday season, November and December.

VOCABULARY

Audition: a tryout for performers.

Open call: a casting open to anyone without appointment

Dress rehearsals: rehearsing in full costume and full tech as though there is an audience.

Previews: performances before the show opens for a limited audience to test public opinion.

Matinee: an afternoon or early evening show.

Actors Equity: A union for Actors

ALADDIN - LEARNING ACTIVITIES

LEARNING ACTIVITIES

BEFORE YOU SEE ALADDIN

READ *THE ARABIAN NIGHTS*, JUNIOR EDITION OR WATCH *ALADDIN*

Questions for Discussion:

1. Who is the main character to the story?
2. What are some words to describe the magician?
3. What are some words to describe the genie?
4. How does the magician trick Aladdin?
5. What are some words to describe the Princess?
6. Name 3 magical things that happen in the story.
7. If the story continued, what would happen next?
8. What are Aladdin's wishes?
9. Who is your favorite character?
10. If you had one wish that would help someone else, what would it be?

ALADDIN AND HIS WINTER WISH

There are many different versions of the fairytale Aladdin. Explain that the Panto version is one of many.

Ask the Class:

- A) How many have seen other fairytales and which were their favorite and why?
- B) Have they seen fairytales on stage before, which ones?
- C) Have they read a book, seen the movie and then noticed any differences?
- D) What do they think the play will be like?

ALADDIN - LEARNING ACTIVITIES

LEARNING ACTIVITIES

AFTER YOU SEE ALADDIN

Review the performance and ask the students to help make a list of events that happened in the show. Write these on the board for all to see.

RHYMING COUPLETS

Throughout Aladdin, the Slave of the Ring uses many different rhymes, including rhyming couplets.

If you were to label each set of rhyming words as a letter, the rhyme scheme would look like this: **AABB**.

LOOK at the example below and find the pattern. Then **WRITE** your own poem using rhyming couplets.

ONCE UPON A TIME, IN A FAR DISTANT **LAND**,
WHERE CAMELS ROAM FREELY UPON VAST DESERT **SAND**

LIVED A MIGHTY KING AND HIS MAGIC LAMP OF **GOLD**,
THAT GRANTED HIS WISHES, SO THE LEGENDS **TOLD**.

INTERVIEW THE GENIE

In teams of two, one student **PRETEND** to be the Genie and the other will be a newspaper reporter. Then switch places. Each “interviewer” should come up with five questions to ask.

Each student should put themselves in the character’s shoes and answer from their point of view. Be creative! When you’ve finished, **WRITE** an article about the character you interviewed.

EXAMPLE QUESTIONS

- What are your feelings towards Aladdin?
- Do you think you have the most power in the world?
- Why is Abanazar so evil?

ALADDIN - LEARNING ACTIVITIES

LEARNING ACTIVITIES

THEATRE IMPROVISATION

FACIAL EXPRESSION

Ask the class to communicate with no words, using only their faces.
They should try saying:

Hello
Yes/No
It's over there.
Help!
Stop!
I love you

That's Funny
Where are you?
Are you talking to me?
I'm Hungry
I'm Scared
I'm Sleepy

WALKING ACROSS THE STAGE

Clear a space in the classroom for the students to move in. One by one the student must walk across the floor and imagine they are:

Walking up a Hill
Swimming through a frozen pond
In a giant bowl of Jell-O
Flying in the sky
Walking on a sticky sidewalk
Walking on the moon

POSTCARDS

Write a postcard to someone as if you were living in Aladdin's Palace. What have you seen around Bagrobba? What have you been doing with Aladdin? Use your imagination to tell a tale about your vacation.

VOCABULARY

Family Crest: A symbol that reflects your family

Sash: An article of clothing worn by the Prince.

THANK YOU

STAGE GUIDE



As a parent or teacher, you are the only person qualified to determine what is right for your child/student, but we hope this information guide was helpful. This guide was designed by Magic Pictures International please feel free to copy and distribute.

OTHER AMERICAN PANTOS TO LOOK FORWARD TO ARE:

CINDERELLA CHRISTMAS

A SNOW WHITE CHRISTMAS

SLEEPING BEAUTY'S CHRISTMAS

PETER PAN AND A PIRATES CHRISTMAS

www.americanpanto.com



LYTHGOE FAMILY PRODUCTIONS

C/O MAGIC PICTURES INTERNATIONAL
7800 Beverly Boulevard Suite 207
Los Angeles
CA 90036
T. 323 575 6161

DOWNLOAD FREE PANTO APP



- All the Fairytales
- Read or Read to Me
- Fully Interactive

- Madlibs
- Color in Characters
- Puppet Theatre

Search App stores
for 'PANTO'

LYTHGOE FAMILY PRODUCTIONS

Sleeping Beauty

Aladdin

Cinderella

Peter Pan

Snow White



Find out which American panto® is coming to your theatre

www.AMERICANPANTO.com

Uniting Families with Theatre