

Quadraverb Plus Upgrade Install Guide



Table of Contents

Required Tools/ Getting Started.....	p. 2
Installation	p.3 - 7
Opening the Quadraverb.....	p. 3
Locating the Original OS Chip.....	p. 4
Removing the Original OS Chip.....	p. 5
Installing the OS Upgrade	p. 6
Finishing with LCD Message	p. 7

Read the entire document before beginning the installation process. Take your time, take notes, and take photos whenever the need arises.

Be sure to unplug the machine before working on the inside, the voltages inside have the potential to be very dangerous!

Continue at your own risk! The author of this document cannot be held responsible for any damages caused by the information contained within this document.



Fig. 1 - Required Tools

Required Tools

- Phillips Head Screwdriver
- Flat Head Screwdriver

Before getting Started

- If needed be sure to back up any data from your Quadraverb
- Read up on electrostatic precautions before proceeding
- You may even want to consider wearing an antistatic wrist strap
- Remember to power off and unplug the unit before starting

*I personally did not choose to wear an antistatic wrist band during the installation without issue.

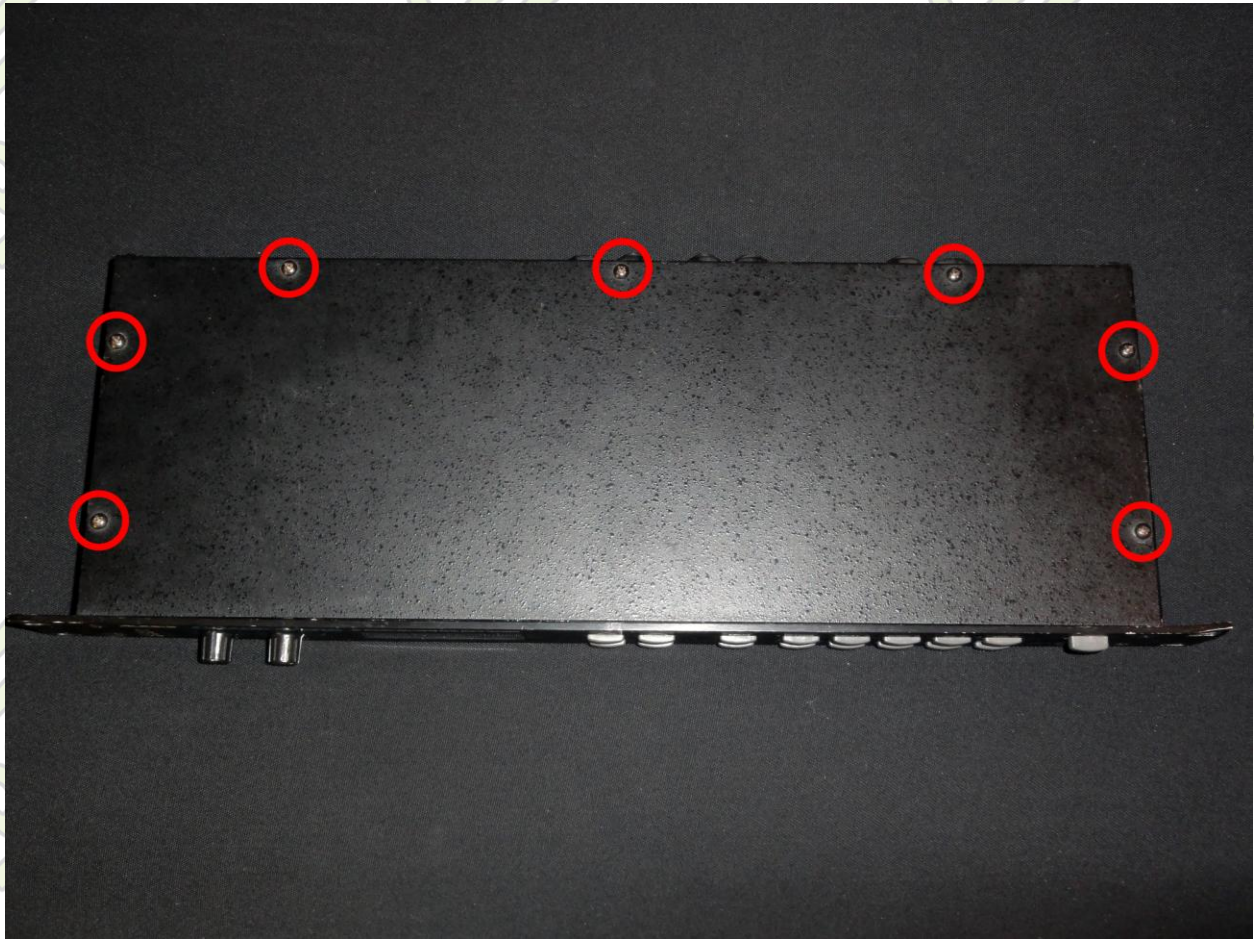


Fig. 2 - Screw Locations

Step 1:

You will need to remove 7 screws from the top of the case in order to open the unit. Once all of the screws have been removed take the cover off and set it aside.

Be sure to unplug the machine before working on the inside, the voltages inside have the potential to be dangerous!



Fig. 3 - Original OS ROM location

Step 2:

Now that the unit is opened, locate U19. It is the chip marked with the red box in the photo above. Also on the circuit board it is labeled with silkscreen as U19. One side of chip has a notch in it. Make note of the orientation of the notched side as you will need to install the upgrade chip in the same orientation with its notch facing the same way.

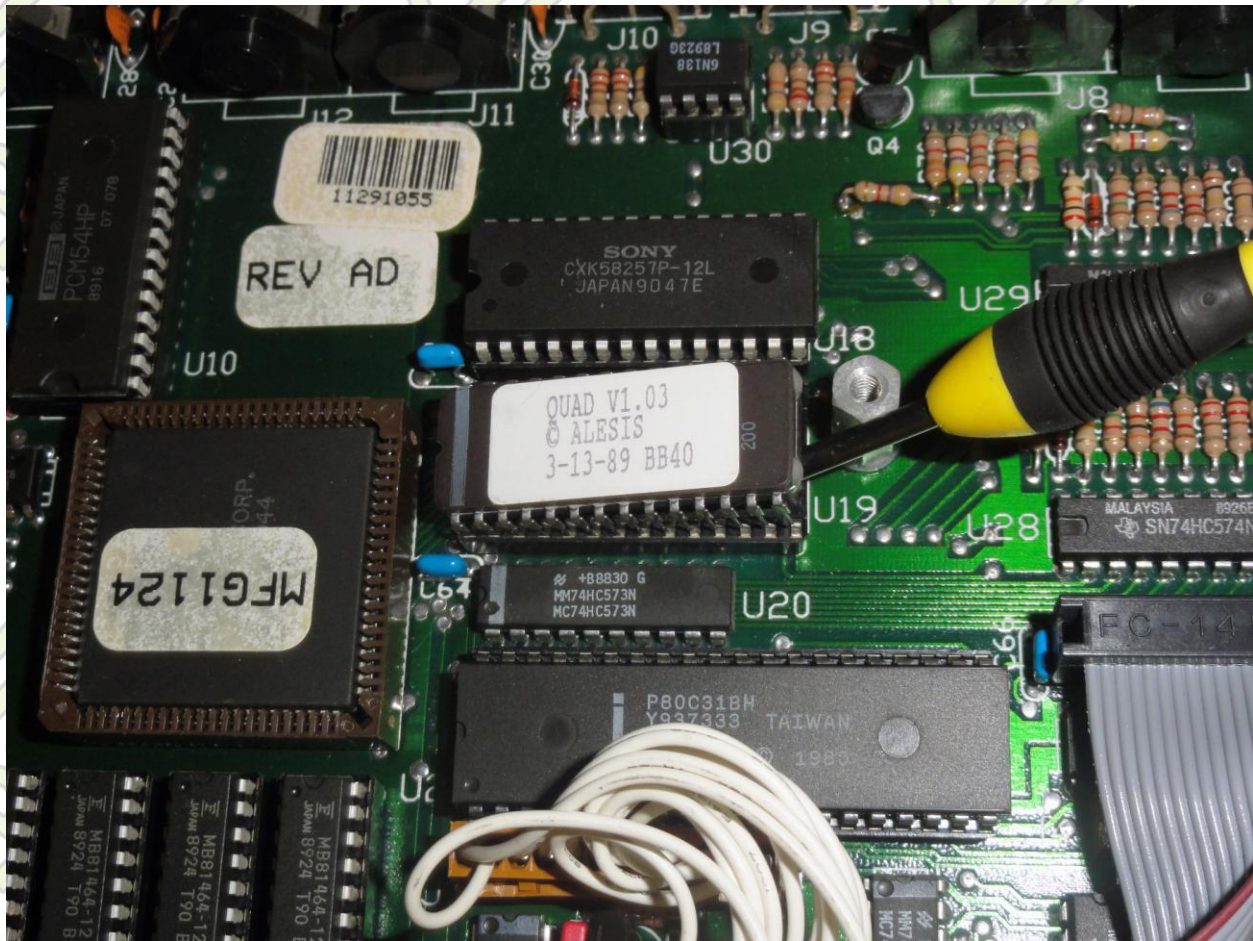


Fig. 4 - Prying up the Original OS chip

Step 3:

Remove the original OS chip U19 from its socket. Using a small flat head screwdriver, gently pry up slightly on one side, and then pry up the other side of U19 OS ROM chip. Continue to pry up on one side, then the other side, until you are able to remove the chip from its socket. It is a good idea to take your time and gently pry in order not to bend any of the pins on the original U19 OS chip. Once removed, set the original chip aside.



Fig. 5 - Quadraverb Plus chip installed into U19 socket

Step 4:

Now install the upgrade chip into the U19 socket making sure that the orientation matches that of the original. There is also a notch on one side of the upgrade chip, be sure that the notch is on the same side as it was on the original chip and as shown in the photo above. Also be sure that the pins are aligned properly with the socket before pressing down on the chip to fully seat it. It is possible to accidentally bend the pins, possibly even breaking them if you do not align the chip properly with the socket before pressing down on the chip to seat it, be careful.



Fig. 6 - The LCD showing QUADRAVERB Plus message

Step 5:

After installing the upgrade chip check that it is working properly and confirm that the startup message on power up reads as ALESIS QUADRAVERB Plus.

Now screw it all back together and you are finished.



This guide is not to be distributed or redistributed without explicit permission from the owner of the document.
contact: glitchscience[at]gmail[dot]com with inquiries