

SCALING EQUIPMENT

SCALING EQUIPMENT

ALF-CV2.OK.1.4	Input supports HDCP 2,2 Supports EDID bypass and auto input resolution detection, optimizes resolution of display device. Transmission of 4k@60Hz 4:2:0 signal from source to display is up to 15m. No need for external power supply.	880,00
ALF-SC61E	4K Scaler Switcher with 6 video input , including 4HDMI and 2VGA (with 3.5mm audio), 1HDMI output with de-embedded audio on Phoenix, 3.5mm jack and optical outs. Controllable by button IR and RS232 ControlAuto switcher. IR IN & RS232 control.	7 750,00
ALF-SC51TS	5 x Input Seamless Scaling Presentation Switcher Input HDMI 1.4 HDCP2.2 1080P with RS-232, IP CONTROL, IR and button control, POH, include Rx Receiver . Auto switcher. INPUTS: 1 x HDMI/MHL, 2 x HDMI, 1 x Displayport, 1 x VGA, 1 x Mic, OUTPUTS: 1 x HDMI 1 x Audio de-embedded 1 x HDBaseT, POH" 1 x DP External Audio and 1 x VGA Aux	20 650,00
ALF-SCU91T-N	9 input multi format 4K auto A/V presentation Scaler Switcher that scales video signals to HDMI and HDBaeT outputs simultaneously. The HDbaseT output supports 48V PoH and can connect to HDbaseT receiver up to100m. RS232& IP control auto switching. Includes TPHD-70RX receivers, INPUTS: 1 x HDBaseT, 1 x Display Port, 5 x HDMI, 2 x VGA , OUTPUTS: 1 x HDMI, 1 x HDBaseT	35 100,00
ALF-SC121D-TN	12 x Input Full-HD Scaling Presentation Switcher with Audio Amplifier, RS-232, IR, button and TCP/IP control. Including HDBaseT receiver: TPUHD70-RR, INPUTS: 4 x HDMI, 4 x VGA, 2 x C-Video, 1 x S-Video, 1 x YPbPr, 6 x Audio & 2 x Mic, OUTPUTS: 1 x HDMI, 1 x VGA, 1 x HDMI TP(HDBaseT), 1 x RJ45 with audio, 2 x 10W Low Z amplifier	22 700,00
ALF-BYOD	The BYOD is a mutiformat presentation switcher converting AV signal from Lightning, USB-C, Mini DP, DP HDMI type-D to HDMI. It has various applications in places, such as classrooms, small meeting rooms, lecture halls etc. Supports lightning, USB-C, MINI DP, DP, HDMI type-A & HDMI type-D input signals to be converted to HDMI signals. Auto-selects the input signal, the last connected signal source will be switched to the output automatically. Starts to scan from Lightning to HDMI type-D & switch the first detected source to the output.	19 100,00

CONTROL INTERFACES

ALF-WP8	Programmable Control Panel: 8 buttons, with RS232/485, Infrared, Relay and loop mode. IR learning function. Back-lit buttons. ALSO AVAILABLE IN BRUSHED ALUMINIUM. INPUTS: 12 volt power supplied, RS-232, OUTPUTS: 2 x Relay, 3 x RS232 or 1 x RS-232 with 2 x IR, 1 x RS485	5 990,00
---------	--	----------





MODEL

ALFAtron Price List

DESCRIPTION



01 May 2019

RETAIL
EXCL VAT

TWISTED PAIR (CAT6) EXTENDERS/HDMI BOOSTER

ALF-B20K Booster	Supports HDMI2.0 & HDCP2.2 compliant. The total transmission distance of 4k@30Hz signal is up to 35m, and the maximum distance from HDMI output to display supports 15m. The total transmission distance of 1080p signal is up to 40m, and the maximum distance from HDMI output to display support 30m. No need for external power supply. INPUTS: 1 x HDMI, OUTPUTS: 1 x HDMI	850,00
ALF-EXT60IR (Rx/Tx)	The EXT-60IR extends HDMI signal between Transmitter and Receiver over Cat5E/6 cable. It supports 1080p@60Hz video signals up to 55m including embedded multi-channel audio HDCP1.4. Built in EDID Single power supply required at transmitter. INPUTS: RX HDMI Transmitter contains 1 local output for local display. OUTPUTS: TX HDMI HDBaseT	1 250,00
ALF-IPM1-Tx	HDMI over IP HD encoder for real time extending and distributing 1080p video up to 100m, PoE supported, Supports point to point & broadcasting functions. INPUTS: 1 x HDMI, 1080p, PoE. OUTPUTS: 1 x RJ45	1 990,00
ALF-IPM1-Rx	HDMI over IP decoder for real time extending and distributing 1080p video up to 100m, PoE supported. Input: 1 x RJ45, Output: 1 x HDMI	1 990,00
ALF-TPUK70RS-Rx/Tx	HDMI2.0 Extender package consisting of a transmitter (TPUK70-RS T) & receiver (TPUK70-RS R) . It extends 1080p/4K HDMI signal over CAT6 cable up to 70m/40m (POC) & enables IR & RS-232 pass-through to control source or display device remotely. Visually lossless video compression technology (VLC) ensures HD lossless transmission. HDR & 4K@60Hz/4:4:4 over CAT5/CAT6A cable. TX INPUT 1 x HDMI. TX OUTPUT 1 x HDBase-T; RX INPUT 1 x HDBase-T RX OUTPUT 1 x HDMI	5 800,00
ALF-TPHD70-Rx/Tx	Slimline, compact HDBaseT extender set. HDCP 2.2HDMI/IR and POC over single twisted pair. Transmit high resolution 1080p signal up to 70m and 4K signal up to 40m. It also Supports ARC which enables audio upstreaming from display to speakers. TX INPUT 1 x HDMI TX OUPUT 1 x HDBase-T. RX INPUT 1 x HDBase-T, ARC RX OUTPUT 1 x HDMI	5 150,00
ALF-TPUHD70 -RS (Rx/Tx)	Slimline, compact HDBaseT extender set. HDCP 2.2HDMI/IR/RS232 & POH over single twisted pair. Transmits 1080p signal up to 70 M and 4k up to 40M. Supports CEC/IR/RS232 pass through. TX INPUT 1xHDMI. TX OUTPUT 1xHDBase-T supports CEC/IR/RS-232. RX INPUT 1xHDBase-T, RX OUTPUT 1xHDMI.	5 590,00





MODEL

ALFAtron Price List

DESCRIPTION



01 May 2019

RETAIL
EXCL VAT

ALF-TPHD403P	Transmitter/receiver set. HDMI 1.4/IR/RS232 and PoC Over Single Twisted Pair. 100 M transmission. Supports HDMI 1.4, 3D, 4K x 2K, 2xRJ45 ports for LAN connection. INPUTS 1xHDMI, RS-232, IR1 x RJ45(HD-BaseT), 2xRJ45 (LAN). OUTPUTS 1xHDMI, RS-232, IR 1xRJ45(HD-BaseT), 2xRJ45 (LAN)	8 800,00
ALF-TPHD402-PR	HDBase T Receiver only, supports full HD, maximum transmission up to 70 M over CAT5e/CAT6 cable. Bandwidth 10.2Gps HDTV compatible, HDMI 1.4 & HDCP compliant. Supports PoC & CEC. Bidirectional RS232/IR control. LED indicators show work status. Wall/Table-mountable aluminium enclosure. INPUTS 1xIR (3.5mm jack) 1xHDBT (RJ-45) 1xRS232. OUTPUTS HDMI, RS-232, IR	3 100,00
ALF-TPBHD70-R	HDMI 1.4/IR/RS232 and POE across Single Twisted Pair. Receiver Only. Built-in IR Sensor. 70 metre range. Excludes 24VDC PSU. Required for MUH44TP-N, MUH88TP-N, TPHD405PT & SUH4T. INPUTS 1 x RJ45(HD-BaseT). IR OUTPUTS HDMI. RS-232. IR	3 100,00
ALF-TPUHD70-T Tr	HDMI/IR/RS232 Over Single Twisted Pair. Transmitter only. 70 metre transmission. Required for MMX Modular Matrix. INPUTS HDMI, RS-232, IR, RJ45 OUTPUTS HDMI, RS-232, IR, RJ45	3 100,00
ALF-IR-TPHD	Alfatron IR eye set	400,00

SWITCHING EQUIPMENT

ALF-WUK4A	4x1 HDMI full 4K automatic switcher, with HDCP 2.2. EDID management. 4k, 3D & 1920x1080@60Hz. IR, RS232 & front panel control. Audio de-embedder, ARC support on input 4. INPUTS 4 x HDMI. OUTPUTS 1 x HDMI, 3,5mm Audio, RS-232, IR	3 700,00
ALF-MV4	Video Wall Processor with 4 DVI-I inputs and Outputs. Configurable in 2x2 or 4x1 display setups. Image Overlap, Scaling Outputs, Position & Size Adjustment. Contrast & Brightness adjustment. RS232, USB, button and optional TCP/IP control. INPUT S4 x DVI-I. OUTPUTS 4 x DVI-I, USB	36 100,00
ALF-TPHD405PT-WPB	Wall Mounted HDMI/VGA Automatic Switcher and Scaler. Works with MMX HDBaseT Input Cards. Excludes TPBHD70-R Receiver. INPUTS 1 x HDMI 1 x VGA 1 x RS-232 via Phoenix, 1 x Audio 3,5mm. OUTPUTS 1x RJ45 (HDBaseT) with PoC in only	11 350,00

SPLITTERS/DISTRIBUTION AMPLIFIERS

ALF-SUK2	FULL 4k 4:4:4 HDR 60Hz 1x2 HDMI 2.0 Distribution Amplifier, HDCP 2.2. EDID management 2K X 4K 60Hz Resolution. INPUTS 1 x HDMI. OUTPUTS 2 x HDMI	1 890,00
ALF-SUK4	FULL 4k 4:4:4 HDR 60Hz 1x4 HDMI 2.2 Distribution Amplifier, with HDCP 2.2 . EDID management 2K X 4K 60Hz Resolution. INPUTS 1 x HDMI. OUTPUTS 4 x HDMI	2 300,00
ALF-SUH4T	1x4 HDBaseT Splitter. RS232 and IR for Display Control. Supports 4Kx2K & 3D(HDMI 1.4).Smart EDID learning. Excludes TPUHD70-R Receivers. INPUTS 1 x HDMI OUTPUTS 4 x RJ45 (HDBaseT) with PoC, 1 x HDMI (for cascading), IR 3,5mm jack	15 500,00





MODEL

ALFAtron Price List

DESCRIPTION



01 May 2019

RETAIL
EXCL VAT

MATRIX SWITCHERS

ALF-MUK44A-N	FULL 4k 4:4:4 HDR 60Hz 4x4 HDMI true 4K matrix switcher, with HDCP 2.2. EDID management, RS232 and IP/TCP Control. IR Control. Built-in audio de-embedder .INPUTS 4 x HDMI3 x IR. OUTPUTS 4 x SPDIF 4 x HDMI	14 450,00
ALF-MUH44E	4x4 HDBaseT Matrix Switcher 4K. Supports HDCP 2.2. Transmit 4K&2K signal 8m via HDMI port. 40m via HDBT port. Controllable via front panel, RS232, IR and TCP/IP. Built-in GUI for TCP/IP control and setup. EDID Management. Includes TPHD-70-E-R receivers. INPUTS 4 x HDMI (4k x 2k@60Hz signal at max)OUTPUTS 3 x IR 3x HDBaseT 1 x HDMI 1 x SPDIF and 1 x L&R RCA	23 750,00
ALF-MUH44A-RS	4K HDMI 4x4 input output matrix switcher with HDCP 2.2 and 4K@60Hz video support can be controlled via front panel buttons, IR remote and RS232. INPUTS 4 x HDMI. OUTPUTS 4 x HDMI	5 990,00
ALF-MUH88E	8x8 HDBaseT Matrix Switcher 4K. Supports HDCP 2.2. Transmit 4K&2K signal 8m via HDMI port. 40m via HDBaseT port. Controllable via front panel, RS232, IR and TCP/IP. Built-in GUI for TCP/IP control and setup. EDID Management. Includes TPHD-70-E-R receivers. INPUTS 8 x HDMI (4k x 2k@60Hz signal at max) 7 x IR. OUTPUTS 8 x IR 7x HDBaseT 1 x HDMI 1 x SPDIF and 1 x L&R RCA	60 850,00
ALF-MUH44TP-N	4x4 HDMI matrix switcher, with HDCP. EDID management. Built-in audio de-embedder. Supports HDMI 1.4, 3D, 4K x 2K & 1920x1080@60Hz. HDBaseT Ouputs support POE, RS232 & IR transmission up to 60metres. RS-232, IP Control, IR and button control. Excludes TPUHD70-R Receivers. INPUTS 4 x HDMI4 x IR. OUTPUTS 4 x HDMI TP (HDBase-T)2 x HDMI4 x IR 4 x Phoenix	25 800,00
ALF-MUK88A-N	8x8 HDMI matrix switcher true 4k, with HDCP 2,2. EDID management, Built-in audio de-embedder.1920x1080@60Hz. RS-232, IP Control, IR and button control. INPUTS 8 x HDMI8 x IR OUTPUTS 8 x HDMI8 x SPDIF ports.	26 850,00
ALF-MUH88TP-N	8x8 HDMI matrix switcher, with HDCP. EDID management Built-in audio de-embedder. Supports HDMI 1.4, 3D, 4K x 2K & 1920x1080@60Hz. HDBaseT Ouputs support POE, RS232 & IR transmission up to 60metres. RS-232, IR, IP Control and button control. Excludes TPUHD70-R Receivers. INPUTS8 x HDMI 8 x IR. OUTPUTS8 x HDMI TP4 x HDMI8 x IR8 x Phoenix	77 350,00
ALF-SM62T	6X2 Presentation Switcher with Matrix Outputs & 2x20W amplifier. Transmission distance up to 70m at 1080p & 40m at 4K video. HDMI inputs support 4Kx2K @30Hz, 4:4:4, HDCP2.2. Multiple VGA video resolution. Supports customised & embedded EDID selection, auto switching & 48V PoH. Front panel, IR remote, RS232 & GUI control. Online software upgrading. VIDEO INPUTS 3xHDMI, 1xDP, 2xVGA. AUDIO INPUTS 2x Stereo analog audio for VGA, 1x Line audio, 1x Mic. with phantom. VIDEO OUTPUT 1xHDMI, 1xHDBT. AUDIO OUTPUT 2x unbalanced analog + 1x balanced/unbalanced stereo analog audio. Digital optical audio. Includes TPUHD70RX HDBaseT Receiver & AlfaTron power surge protector.	25 800,00



MODULAR MATRIX SWITCHES

ALF-MMX88A-N	Modular matrix switcher cage 8x8 at 2U high with Audio break-away switching, RS232, Button & optional TCP/IP controlling, backlit buttons Redundant power supply. INPUTS 2 x MMX Cards. OUTPUTS 2 x MMX Cards, RS-232, Audio break-away switching, TCP/IP Controlling	40 250,00
ALF-MMX1616-N	Modular matrix switcher cage 16x16 at 3U high, RS232, button & optional TCP/IP controlling, backlit buttons, Redundant power supply. INPUTS 4 x MMX Cards. OUTPUTS 4 x MMX Cards, RS-232, Audio break-away switching, TCP/IP Controlling	77 350,00
ALF-MMX3232-N	Modular matrix switcher cage 32x32 at 5U high, RS232, button & optional TCP/IP controlling, backlit buttons, Redundant power supply. INPUTS8 x MMX Cards OUTPUTS8 x MMX Cards. RS-232, Audio break-away switching, TCP/IP Controlling	154 700,00
ALF-MMX6464-N	Modular matrix switcher cage 64x64 at 10U high, RS232, button & optional TCP/IP controlling, backlit buttons,Redundant power supply. INPUTS 16 x MMX Cards. OUTPUTS 16 x MMX Cards, RS-232, TCP/IP Controlling	773 200,00
ALF-MMX144144-I	Modular matrix switcher cage 144x144 at 10U high, RS232, button & optional TCP/IP controlling, backlit buttons,Redundant power supply. INPUTS 36 x MMX Cards. OUTPUTS 36 x MMX Cards	1 546 400,00

MMX Input Cards for modular matrix switchers

ALFMMX-4I-UH	4x HDMI Inputs max 4K	6 200,00
ALFMMX-4I-HS	4x Seamless HDMI Inputs max 1080P	10 350,00
ALFMMX-4I-DV	4x DVI Inputs max 4K	6 200,00
ALFMMX-4I-DS	4x Seamless DVI Inputs max 1080P	1 050,00
ALFMMX-4I-VA	4x VGA inputs	9 800,00
ALFMMX-4I-SD	4x SDI Inputs max 4K	19 600,00
ALFMMX-4I-BT	4x HDMI HDBT (CAT6) Inputs - Excludes Transmitter. Requires TPUHD70-T	18 600,00
ALFMMX-4I-UF	4x Fibre Inputs max 4K	40 250,00
ALFMMX-4I-SS	4x MMX Seamless SDI input card max 1080P	20 650,00



MMX Output Cards for modular matrix switchers

ALFMMX-4O-HS	4x Seamless HDMI output max 1080P	16 500,00
ALFMMX-4O-UH	4x HDMI Outputs max 4K	7 250,00
ALFMMX-4O-DS	4x Seamless DVI Outputs max 1080P	16 500,00
ALFMMX-4O-DV	4x DVI Outputs max 4K	7 250,00
ALFMMX-4O-VG	4x VGA Outputs	10 350,00
ALFMMX-4O-SD	4x SDI Outputs max 4K	18 600,00
ALFMMX-4O-BT	4x HDMI HDBT (CAT6) Outputs -Excludes Receiver. Requires TPUHD70-R	21 700,00
ALFMMX-4O-UF	4x Fibre Outputs max 4K	40 250,00
ALF-FMX12	High-performance SEAMLESS AV modular matrix switcher with 12 flexible PCI-E slots for single HDMI / VGA / DVI / SDI / HDBaseT input and output cards. Input/Output card Auto-detection, support plug-and-play, seamless switching of different video signals crossly. HDBaseT cards are with PoH function. INPUTS 12 x FMX Inputs. OUTPUTS 12 x FMX outputs	77 350,00

FMX Input Cards for modular matrix switchers

ALFFMX-IDV	1x FMX seamless DVI input max 1080P	3 100,00
ALFFMX-IHD	1x FMX seamless HDMI input max 1080P	3 100,00
ALFFMX-SDI	1x FMX seamless SDI input max 1080P	5 200,00
ALFFMX-ITP	1 x FMX seamless HDBT input max 1080P	6 200,00
ALFFMX-IVG	1 x FMX seamless VGA input max 1080P	2 900,00

FMX Output Cards for modular matrix switchers

ALFAtron FMX-OD	1x FMX seamless DVI output max 1080P	4 650,00
ALFAtron FMX-OHI	1x FMX seamless HDMI output max 1080P	4 650,00
ALFATRON FMX- 4	1 x FMX Seamless 4k input or output	8 250,00
ALFFMX-OTP	1x FMX seamless HDBT output max 1080P	7 750,00
ALFFMX-OVG	1x FMX seamless VGA output max 1080P	4 650,00





ALFAtrON Price List
DESCRIPTION



01 May 2019

RETAIL
EXCL VAT

INTERACTIVE LED SCREENS

ALF-65LEDT	ALFAtrON 65" 40 point multi-touch interactive LED monitor with Android and Windows 10 Pro with I5 processor. DDR4-8G, 256G SSD. Android 5.01 with 2G DDR3 Ram and 32G ROM. Micro SD and WiFi support. Windows OPS PC Slot with 4G memory and 500G Hardrive. Wireless screen share for Android. Supplied with remote control. Inputs: HDMI, USB, RS232, Mic In, AV, VGA, Audio, RJ45. Outputs: SPDIF, AV, HDMI, RJ45.	77 350,00
------------	--	------------------



AUDIO EQUIPMENT

ALF-CMW101	Webcam with 2.4G wireless speaker. Full HD 1080P 120 degree shooting angle camera lens suitable for small to middle size conference and huddle rooms. Size: 139 x121x103mm (camera) 155x148x37mm (speaker) Interface: USB2.0 3.5mm earphone jack. USB power for camera & built in Lithium Battery for speaker.	9 800,00
ALF-CHKA2	FULL 4k 4:4:4 HDR HDMI 2.0 HDCP 2.2 60Hz audio de-embedder 1 x HDMI input, 1 x HDMI output with 1 x coax audio output, stereo RCA, balanced stereo phoenix connector. INPUTS HDMI. OUTPUTS HDMI, coax audio output, stereo RCA, balanced stereo phoenix connector	2 600,00



AMPLIFIERS

ALF-PA2B	Mini Amplifier(Class D), with MIC mixer. 2x20Watt@40hm default output, volume/bass/treble adjustable separately. 1x40Watt@80hm bridge output. Dual-mono output. 24VDC power supply.Mic has 3-level switch at 48V phantom power, MIC & LINE. RS232 or Button Control. IR control Optional. INPUTS 2 x 3.5mm, 2 x RCA, 1 x MIC. OUTPUTS L+R Speaker. Audio loop	4 050,00
ALF-IR-PA2B	IR remote package of PA2B, fully control function. Including 1pc remote and 1pc IR sensor/receiver. INPUTS IR SENSOR. OUTPUTS 1 x 3.5mm Jack	790,00
ALF-PA100V	Mini Amplifier(Class D), with MIC mixer. 40Watt@100v, volume/bass/treble adjustable separately. 3 Audio Inputs - 1 x Digital and 2 x Analog. 24VDC power supply.Mic has 3-level switch at 48V phantom power. RS232 or Button Control. IR control Optional. INPUTS 1 x 3.5mm Audio, 1 x Stereo RCA, 1 x Optical, 1 X MIC. OUTPUTS 1 x Speaker	6 750,00
ALF-IR-PA100V	IR remote package for PA 100V, fully control function. Including 1pc remote and 1pc IR sensor/receiver. INPUTS IR SENSOR. OUTPUTS 1 x 3.5mm Jack	790,00
ALF-PA-100W	Compact-size digital amplifier (Class-D) boasts complete EQ adjustment and intuitive work status display, making it an ideal addition to a classroom or conference room application. RS232/IP, and IR control . SUPPLIED WITH A REMOTE. INPUTS 1 x L+R stereo audio, 1 x Analog audio, 1 x Optical fibre audio. OUTPUTS Switchable stereo. 2 x 50Watt@8 Ohm or 1 x 100Watt@4 Ohm	7 750,00
ALF-60W-UB	Media player, mixer amplifier with Bluetooth. Supplied with remote control. On board tuner and MP3 player. Front panel mic. input with priority function, rear panel balanced mic. input with phantom power. Emergency input function. Dual rca line inputs and rca aux out. 60W at 70/100V and 4-16 Ohms. 24V backup power input.	2 950,00





MODEL

ALFAtron Price List

DESCRIPTION



01 May 2019

RETAIL
EXCL VAT

AV INTERFACES

Docking Stations

ALF-DOCT	Table dock for iPad 2, 3, 4 and Mini. Includes power supply and 2 x safety pins.	5 990,00
ALF-DOCW	Wall dock for iPad 2, 3, 4 and Mini. Includes power supply and 2 x safety pins.	5 990,00

Popups and Card Readers

ALFT-SC6 POPUP	1 x RSA power supply, 6 cable holes supplied with 1xHDMI, 1xVGA, 1x3.5mm audio, 2xRJ45 & 1xUSB(M-M), 1.5m long. Black brushed aluminium. Slidable cover.	2 550,00
ALFTSM1 POPUP	Smart popup & hidden table-top socket, built-in hydraulic mechanism. 1 RSA power, 2 RJ45, 1DP, 1HDMI, 1VGA and 1 3.5mm audio. Black brushed aluminium.	2 990,00
XI TSM4	Smart popup & hidden table-top socket, built-in hydraulic mechanism. 2 x RSA power, 4 x RJ45	2 100,00
XI-USBHUB	In-desk USB HUB(USB2.0)+Card reader+Audio to mount into a 3.15 inch round opening on your desk or other surface. Connects directly to your computer with the included USB cable. 3 x USB ports, data transfer rate up to 480 Mbps, Directly read SD/MMC/SDHC/MS/MS pro/MS Duo /MS pro duo cards. 1 x Audio input. 1 x Audio output	260,00

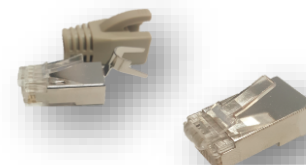
Modular Connection System

XI-BOX	3 x 3 plastic wall box, fits AMC & XI-YZ-TC volume controls and requires XI-YZ-P plate for use with XI-YZ modules	70,00
XI-YZ-P	3 x 3 module surround clip ion plate for 3 x XI-YZ modules	105,00
XI-YZ-B	Blank module	38,00
XI-YZ-HDMI	HDMI Module, female HDMI on rear panel	470,00
XI-YZ-VGA15	VGA Module, solder terminals on rear panel	190,00
XI-YZ-2RCA	2 x RCA Module, RCA sockets on rear panel	115,00
XI-YZ-AV	3 x RCA Module, RCA sockets on rear panel	115,00
XI-YZ-SP	Speaker terminal module	125,00
XI-YZ-H	Mini jack module, mini jack on rear panel	75,00
XI-YZ-TL	RJ11 telephone module, RJ11 on rear panel	95,00
XI-YZ-NET	RJ45 network module, RJ45 on rear panel	135,00
XI-YZ-TV	F type TV module, F type on rear of panel	135,00
XI-YZ-USBA	USB-A module, USB-A on rear panel	190,00
XI-YZ-USBB	USB-B module, USB-B on rear panel	190,00



CABLES

HDMI		
HDMI .6M	0.6M HDMI cable 4K	85,00
HDMI 2M	2M HDMI cable 4K	125,00
HDMI 5M	5M HDMI cable 4K	155,00
HDMI 10M	10M HDMI cable 4K	360,00
HDMI 15M	15M HDMI cable 4K	880,00
HDMI 20M	20M HDMI cable	980,00
ALFHDFK20	20M 4K Fibre HDMI Cable 4:4:4 HDR	3 620,00
ALFHDFK40	40M 4K Fibre HDMI Cable 4:4:4 HDR	4 650,00
VGA		
XI-VGA-5M	5M VGA Cable	190,00
XI-VGA-10M	10M VGA Cable	350,00
XI-VGA-15M	15M VGA Cable	465,00
XI-VGA-20M	20M VGA Cable	590,00
XI-VGA-25M	25M VGA Cable	705,00
XI-VGA-30M	30M VGA Cable	815,00
CAT6 SFTP Roll	Ideal cable for ALFAtron Twisted Pair Products 23 AWG Solid Copper. SFTP - 4 x unshielded twisted pairs inside an overall braid & foil shield. Tested 1080p to 100 M on TPHD403P. 4K up to 60 M - 305 metres per roll.	6 400,00
CAT6 SFTP M	Ideal cable for ALFAtron Twisted Pair Products 23 AWG Solid Copper. SFTP - 4 x unshielded twisted pairs inside an overall braid and foil shield. Tested 1080p to 100 M on TPHD403P. 4K up to 60 M - 305 metres per roll. Priced per Metre	22,00
CAT6 PLUG	Shielded RJ45 Connector for ALFAtron - CAT6 23 AWG SFTP Cable. Metal strain relief and ground Bonding	18,50
RJ45 PLUG	Shielded RJ45 Connector for 24AWG CAT6 Cable. Metal strain relief and ground bonding. (100 connector per bag) PLEASE NOTE: This will not work with ALFAtron - CAT6 23 AWG SFTP Cable. Priced per bag	210,00
CAT6 INSTALL	Termination service Price for terminations of 2x ALFAtron CAT6 Connectors and CAT6 SFTP Cable	210,00



LOUDSPEAKERS & ACCESSORIES

Ceiling Speakers

ALFC-657	2 way 6" loudspeaker with backbox and aimable tweeter. 75W 8Ω, 30/15/7.5/3.75W @ 100V, 60-20,000Hz, 88dB 1W 1M. Dimensions (LxH): 267mmx162mm, mounting hole 240mm diameter. White	1 400,00
ALFC-457	2 way 4" loudspeaker with backbox and aimable tweeter. 40W 8Ω, 20/10/5/2.5W @ 100V, 90-20,000Hz, 87dB 1W 1M. Dimensions (L x H): 204mm x 137mm, mounting hole 180mm diameter. White	1 150,00
ALFC-606	2 way 6" loudspeaker with backbox. 30W 8Ω, 30/15/7.5W @ 100V, 70-20,000Hz, 90dB 1W 1M. Dimensions (L x H): 270mm x 180mm, mounting hole 250mm diameter. White	830,00
ALFC-406	2 way 4" loudspeaker with backbox. 20W 8Ω, 20/10/5/2.5W @ 100V, 90-20,000Hz, 87dB 1W 1M. Dimensions (L x H): 200mm x 150mm, mounting hole 180mm diameter. White	670,00
ALFC-613W	8" ceiling loudspeaker. 10W 8Ω, 10/5W @ 100V, 100-15,000Hz, 93dB 1W 1M. Dimensions (L x H): 228mm x 90mm, mounting hole 205mm diameter. White	310,00
ALFC-613B	8" ceiling loudspeaker. 10W 8Ω, 10/5W @ 100V, 100-15,000Hz, 93dB 1W 1M. Dimensions (L x H): 228mm x 90mm, mounting hole 205mm diameter. White	310,00
ALFC-603W	6" ceiling loudspeaker. 6W 8Ω, 6/3W @ 100V, 100-15,000Hz, 93dB 1W 1M. Dimensions (L x H): 188mm x 76mm, mounting hole 170mm diameter. White	280,00
ALFC-603B	6" ceiling loudspeaker. 6W 8Ω, 6/3W @ 100V, 100-15,000Hz, 93dB 1W 1M. Dimensions (L x H): 188mm x 76mm, mounting hole 170mm diameter. White	280,00
ALFC-623W	5" ceiling loudspeaker. 6W 8Ω, 6/3W @ 100V, 100-15,000Hz, 93dB 1W 1M. Dimensions (L x H): 175mm x 60mm, mounting hole 150mm diameter. White	210,00
ALFC-WSP5-C	5" Loudspeaker in white enclosure for suspension from ceiling in white sound applications. 6W 8Ω, 6/3W @ 100V, 100-15,000Hz, 93dB 1W 1M.	570,00

Cabinet Speakers

ALFW-51W	Surface mount 2 way 5", Power taps: 30W 8Ω, 15W / 7.5W / 3.75W @ 100V, 100-20,000Hz, 89dB 1W 1M, Dimension (L x W x H): 182mm x 162mm x 242mm, white	880,00
ALFW-41W	Surface mount 2 way 4", Power taps: 20W 8Ω, 10W / 5W / 2.5W @ 100V, 100-20,000Hz, 89dB 1W 1M, Dimension (L x W x H): 170mm x 150mm x 215mm, white	730,00
ALFW-51B	Surface mount 2 way 5", Power taps: 30W 8Ω, 15W / 7.5W / 3.75W @ 100V, 100-20,000Hz, 89dB 1W 1M, Dimension (L x W x H): 182mm x 162mm x 242mm, black	880,00
ALFW-41B	Surface mount 2 way 4", Power taps: 20W 8Ω, 10W / 5W / 2.5W @ 100V, 100-20,000Hz, 89dB 1W 1M, Dimension (L x W x H): 170mm x 150mm x 215mm, black	730,00





MODEL

ALFAtron Price List

DESCRIPTION



01 May 2019

RETAIL
EXCL VAT

Volume Controls

ALVC-30	Surface mount 30W 100V stepped attenuator	240,00
ALVC-60	Surface mount 60W 100V stepped attenuator	290,00
ALVC-120	Surface mount 120W 100V stepped attenuator	330,00
XI-YZ-TS	Powerlight stereo 30W 8Ω stepped attenuator, without back box, use XI-BOX	310,00

POWER

ALF-KTELCAB	1 M IEC "kettle cord" with 15 amp RSA plug	110,00
ALF-AV230	Power surge protector. MAX operating voltage: 250V/50Hz MAX Operating current: 16A Max Discharge current (8/20) sn: 24000A Energy handling: 450J Filtration: 70dB (100KHz)	1 290,00
ALF-PSU	5V power supply	520,00
ALF-PSU12	12V power supply	520,00
ALF-PSU24	24V power supply	520,00

