



Department
of the
Treasury

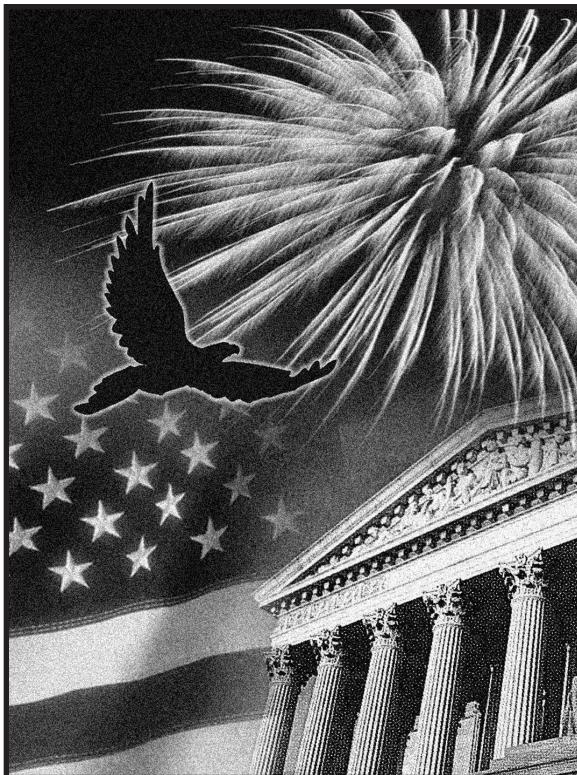
Internal
Revenue
Service

Publication 54

Cat. No. 14999E

Tax Guide for U.S. Citizens and Resident Aliens Abroad

For use in preparing
2021 Returns



Get forms and other information faster and easier at:

- [IRS.gov](https://www.irs.gov) (English)
- [IRS.gov/Korean](https://www.irs.gov/Korean) (한국어)
- [IRS.gov/Spanish](https://www.irs.gov/Spanish) (Español)
- [IRS.gov/Russian](https://www.irs.gov/Russian) (Русский)
- [IRS.gov/Chinese](https://www.irs.gov/Chinese) (中文)
- [IRS.gov/Vietnamese](https://www.irs.gov/Vietnamese) (Tiếng Việt)

Contents

What's New	2
Reminders	2
Introduction	2
Chapter 1. Filing Information	3
Filing Requirements	3
Nonresident Alien Spouse Treated as a Resident	7
Estimated Tax	8
Other Forms You May Have To File	8
Chapter 2. Withholding Tax	8
Income Tax Withholding	8
30% Flat Rate Withholding	9
Social Security and Medicare Taxes	9
Chapter 3. Self-Employment Tax	10
Who Must Pay Self-Employment Tax?	10
Exemption From Dual-Country Social Security and Medicare Taxes	10
COVID-19 Emergency Relief for Self-Employed Individuals	11
Chapter 4. Foreign Earned Income and Housing: Exclusion – Deduction	11
Who Qualifies for the Exclusions and the Deduction?	11
Requirements	11
Waiver of Time Requirements	15
Foreign Earned Income Exclusion	18
Foreign Housing Exclusion and Deduction	20
Form 2555	22
Chapter 5. Deductions and Credits	22
Items Related to Excluded Income	23
Contributions to Foreign Charitable Organizations	23
Contributions to Individual Retirement Arrangements	23
Taxes of Foreign Countries and U.S. Territories	23
How To Report Deductions	24
Chapter 6. Tax Treaty Benefits	25
Purpose of Tax Treaties	25
Common Benefits	26
Competent Authority Assistance	26
Obtaining Copies of Tax Treaties	26
Chapter 7. How To Get Tax Help	26
Index	35

Future Developments

For the latest information about developments related to Pub. 54, such as legislation enacted after it was published, go to [IRS.gov/Pub54](https://www.irs.gov/pub54).

What's New

Standard deduction amount increased. For 2021, the standard deduction amount has been increased for all filers. The amounts are:

- Single or Married filing separately—\$12,550;
- Married filing jointly or Qualifying widow(er)—\$25,100; and
- Head of household—\$18,800.



Due to the increase in the standard deduction, you may be required to file a new Form W-4. For more information, go to [IRS.gov/Payments/Tax-Withholding](https://www.irs.gov/Payments/Tax-Withholding).

Exclusion amount. The maximum foreign earned income exclusion is adjusted annually for inflation. For 2021, the maximum exclusion has increased to \$108,700. See [Limit on Excludable Amount](#) under *Foreign Earned Income Exclusion* in chapter 4.

Housing expenses—base amount. The computation of the base housing amount (line 32 of [Form 2555](#)) is tied to the maximum foreign earned income exclusion. The amount is 16% of the exclusion amount (figured on a daily basis), multiplied by the number of days in your qualifying period that fall within your 2021 tax year. For 2021, this amount is \$47.64 per day (\$17,392 per year). See [Housing Amount](#) under *Foreign Housing Exclusion and Deduction* in chapter 4.

Housing expenses—maximum amount. The amount of qualified housing expenses eligible for the housing exclusion and housing deduction has changed for some locations. See [Limit on housing expenses](#) under *Foreign Housing Exclusion and Deduction* in chapter 4.

Self-employment tax rate. For 2021, the maximum amount of net earnings from self-employment that is subject to the social security part of the self-employment tax has increased to \$142,800. All net earnings are subject to the Medicare part of the tax. For more information, see [chapter 3](#).

IRA limitations for 2021. You may be able to take an IRA deduction if you were covered by a retirement plan and your 2021 modified adjusted gross income (MAGI) is less than \$76,000 (\$125,000 if married filing jointly or a qualifying widow(er)). These limits are increased from 2020. If your spouse was covered by a retirement plan, but you were not, you may be able to take an IRA deduction if your 2021 MAGI is less than \$208,000. See the [Instructions for Form 1040](#) for details and exceptions.

Reminders

Credits for certain self-employed individuals. Refundable income tax credits are available for certain self-employed individuals impacted by COVID-19. For more information,

see [chapter 3](#). Also, see [Form 7202](#) and its instructions.

Denial or revocation of U.S. passport. The IRS is required to notify the State Department of taxpayers certified as owing a seriously delinquent tax debt. The State Department is generally prohibited from issuing or renewing a passport to a taxpayer with seriously delinquent tax debt.

If you currently have a valid passport, the State Department may revoke your passport or limit your ability to travel. Additional information on passport certification is available at [IRS.gov/Passports](https://www.irs.gov/Passports).

Individual taxpayer identification number (ITIN) renewal. An ITIN for a nonresident alien spouse or dependent used on a prior year income tax return may require renewal. For more information, go to [IRS.gov/ITIN](https://www.irs.gov/ITIN).

Figuring tax on income not excluded. If you claim the foreign earned income exclusion, the housing exclusion, or both, you must figure the tax on your nonexcluded income using the tax rates that would have applied had you not claimed the exclusions. See the [Instructions for Form 1040](#) and complete the Foreign Earned Income Tax Worksheet to figure the amount of tax to enter on Form 1040 or 1040-SR, line 16. If you must attach [Form 6251](#), Alternative Minimum Tax—Individuals, to your return, use the Foreign Earned Income Tax Worksheet provided in the [Instructions for Form 6251](#).

Moving expenses suspended. The deduction for moving expenses is suspended unless you are a member of the U.S. Armed Forces who moves pursuant to a military order and incident to a permanent change of station.

Tax home for individuals serving in a combat zone. New rules apply for certain individuals serving in a combat zone in support of the U.S. Armed Forces. For more information, see [Tax Home](#) in chapter 4.

Form 8938. If you had foreign financial assets in 2021, you may have to file Form 8938 with your return. See [Form 8938](#) in chapter 1.

Photographs of missing children. The IRS is a proud partner with the [National Center for Missing & Exploited Children® \(NCMEC\)](#). Photographs of missing children selected by the Center may appear in this publication on pages that would otherwise be blank. You can help bring these children home by looking at the photographs and calling 1-800-THE-LOST (1-800-843-5678) if you recognize a child.

Introduction

This publication discusses special tax rules for U.S. citizens and resident aliens who work abroad or who have income earned in foreign countries.

If you are a U.S. citizen or resident alien, your worldwide income is generally subject to U.S. income tax, regardless of where you are living. Also, you are subject to the same income tax filing requirements that apply to U.S. citizens or resident aliens living in the United States. Expatriation tax provisions apply to U.S. citizens who have renounced their citizenship and long-term residents who have ended their residency. These provisions are discussed in chapter 4 of [Pub. 519](#).

Resident alien. A resident alien is an individual who is not a citizen or national of the United States and who meets either the green card test or the substantial presence test for the calendar year.

1. **Green card test.** You are a U.S. resident if you were a lawful permanent resident of the United States at any time during the calendar year. This is known as the green card test because resident aliens hold immigrant visas (also known as green cards).
2. **Substantial presence test.** You are considered a U.S. resident if you meet the substantial presence test for the calendar year. To meet this test, you must be physically present in the United States on at least:
 - a. 31 days during the current calendar year; and
 - b. A total of 183 days during the current year and the 2 preceding years, counting all the days of physical presence in the current year, but only $\frac{1}{3}$ the number of days of presence in the first preceding year, and only $\frac{1}{6}$ the number of days in the second preceding year.

Example. You were physically present in the United States for 120 days in each of the years 2019, 2020, and 2021. To determine if you meet the substantial presence test for 2021, count the full 120 days of presence in 2021, 40 days in 2020 ($\frac{1}{3}$ of 120), and 20 days in 2019 ($\frac{1}{6}$ of 120). Because the total for the 3-year period is 180 days, you are not considered a resident under the substantial presence test for 2021.

Even if you do not meet either of these tests, you may be able to choose to be treated as a U.S. resident for part of the year under the first-year choice test, discussed in Pub. 519.

For more information on resident and nonresident status, the tests for residence, and the exceptions to them, see [Pub. 519](#).

Filing information. [Chapter 1](#) contains general filing information, such as:

- Whether you must file a U.S. tax return,
- When and where to file your return,
- How to report your income if it is paid in foreign currency,
- How to treat a nonresident alien spouse as a U.S. resident, and
- Whether you must pay estimated tax.

Withholding tax. [Chapter 2](#) discusses the withholding of income, social security, and Medicare taxes from the pay of U.S. citizens and resident aliens.

Self-employment tax. [Chapter 3](#) discusses who must pay self-employment tax.

Foreign earned income exclusion and housing exclusion and deduction. [Chapter 4](#) discusses income tax benefits that apply if you meet certain requirements while living abroad. You may qualify to treat up to \$108,700 of your income as not taxable by the United States. You may also be able to either deduct

part of your housing expenses from your income or treat a limited amount of income used for housing expenses as not taxable by the United States. These benefits are called the foreign earned income exclusion and the foreign housing deduction and exclusion.

To qualify for either of the exclusions or the deduction, you must have a tax home in a foreign country and earn income from personal services performed in a foreign country. These rules are explained in [chapter 4](#).

If you are going to exclude or deduct your income as discussed above, you must file Form 2555.

Exemptions, deductions, and credits. [Chapter 5](#) discusses exemptions, deductions, and credits you may be able to claim on your return. These are generally the same as if you were living in the United States. However, if you choose to exclude foreign earned income or housing amounts, you can't deduct or exclude any item or take a credit for any item that is related to the amounts you exclude. Among the topics discussed in [chapter 5](#) are:

- Contributions to foreign organizations,
- Contributions to individual retirement arrangements (IRAs), and
- Foreign taxes.

Tax treaty benefits. [Chapter 6](#) discusses some benefits that are common to most tax treaties and explains how to get help if you think you are not receiving a treaty benefit to which you are entitled. It also explains how to get copies of tax treaties.

How to get tax help. [Chapter 7](#) is an explanation of how to get information and assistance from the IRS.

Questions and answers. Frequently asked questions and answers to those questions are presented in the back of the publication.

Comments and suggestions. We welcome your comments about this publication and your suggestions for future editions.

You can send us comments through [IRS.gov/FormComments](https://www.irs.gov/FormComments). Or, you can write to the Internal Revenue Service, Tax Forms and Publications, 1111 Constitution Ave. NW, IR-6526, Washington, DC 20224.

Although we can't respond individually to each comment received, we do appreciate your feedback and will consider your comments and suggestions as we revise our tax forms, instructions, and publications. Do **not** send tax questions, tax returns, or payments to the above address.

Getting answers to your tax questions. If you have a tax question not answered by this publication or the *How To Get Tax Help* section at the end of this publication, go to the IRS Interactive Tax Assistant page at [IRS.gov/Help/ITA](https://www.irs.gov/Help/ITA) where you can find topics by using the search feature or viewing the categories listed.

Getting tax forms, instructions, and publications. Visit [IRS.gov/Forms](https://www.irs.gov/Forms) to download current and prior-year forms, instructions, and publications.

Ordering tax forms, instructions, and publications. Go to [IRS.gov/OrderForms](https://www.irs.gov/OrderForms) to order current forms, instructions, and publications; call 800-829-3676 to order prior-year forms and instructions. The IRS will process your order for forms and publications as soon as possible. Do not resubmit requests you've already sent us. You can get forms and publications faster online.

1. Filing Information

Topics

This chapter discusses:

- Whether you have to file a return,
- When to file your return and pay any tax due,
- How to treat foreign currency,
- How to file electronically,
- Where to file your return,
- When you can treat your nonresident alien spouse as a resident, and
- When you may have to make estimated tax payments.

Useful Items

You may want to see:

Publication

- 3** Armed Forces' Tax Guide
- 501** Dependents, Standard Deduction, and Filing Information
- 505** Tax Withholding and Estimated Tax
- 519** U.S. Tax Guide for Aliens
- 970** Tax Benefits for Education

Form (and Instructions)

- 1040-ES** Estimated Tax for Individuals
- 1040-X** Amended U.S. Individual Income Tax Return
- 2350** Application for Extension of Time To File U.S. Income Tax Return
- 2555** Foreign Earned Income
- 4868** Application for Automatic Extension of Time To File U.S. Individual Income Tax Return
- 8822** Change of Address

All of these forms, instructions, and publications can be downloaded from [IRS.gov](https://www.irs.gov). See [chapter 7](#) for information about getting these publications and forms.

Filing Requirements

If you are a U.S. citizen or resident alien, the rules for filing income, estate, and gift tax returns and for paying estimated tax are generally the same whether you are in the United States or abroad.

Your income, filing status, and age generally determine whether you must file an income tax return. Generally, you must file a return for 2021 if your gross income from worldwide sources is at least the amount shown for your filing status in the following table.

Filing Status*	Amount
Single	\$12,550
65 or older	\$14,250
Head of household	\$18,800
65 or older	\$20,500
Qualifying widow(er)	\$25,100
65 or older	\$26,450
Married filing jointly	\$25,100
Not living with spouse at end of year	\$5
One spouse 65 or older	\$26,450
Both spouses 65 or older	\$27,800
Married filing separately	\$5

* If you are the dependent of another taxpayer, see the Instructions for Form 1040 (and 1040-SR) for more information on whether you must file a return.

Note. If you are married and entitled to file jointly, use the married filing jointly threshold unless your spouse has filed a separate return or another taxpayer claims your spouse as a dependent.

Gross income. This includes all income you receive in the form of money, goods, property, and services that is not exempt from tax.

For purposes of determining whether you must file a return, gross income includes any income that you can exclude as foreign earned income or as a foreign housing amount.

If you are self-employed, your gross income includes the amount on Part I, line 7, of [Schedule C \(Form 1040\)](#).

Self-employed individuals. If your net earnings from self-employment are \$400 or more, you must file a return even if your gross income is below the amount listed for your filing status in the table shown earlier. Net earnings from self-employment are defined in [Pub. 334](#).

65 or older. You are considered to be age 65 on the day before your 65th birthday. For example, if your 65th birthday is on January 1, 2022, you are considered 65 for 2021.

Residents of U.S. territories. If you are (or were) a bona fide resident of a U.S. territory, you may be required to file Form 8898. See the instructions for the form, available at [IRS.gov/Form8898](https://www.irs.gov/Form8898), for more information.

When To File and Pay

If you file on a calendar year basis, the due date for filing your return is April 15 of the following year. If you file on a fiscal year basis (a year ending on the last day of any month except December), the due date is 3 months and 15 days after the close of your fiscal year. In general, the tax shown on your return should be paid by the due date of the return, without regard to any extension of time for filing the return.

When the due date for doing any act for tax purposes—filing a return, paying taxes, etc.—falls on a Saturday, Sunday, or legal holiday, the due date is delayed until the next business day.



A tax return delivered by the U.S. mail or a designated delivery service that is postmarked or dated by the delivery service on or before the due date is considered to have been filed on or before that date. Go to [IRS.gov/PDS](https://www.irs.gov/PDS) for the current list of designated services.

Direct Pay option. You can pay online with a direct transfer from your bank account using Direct Pay, the Electronic Federal Tax Payment System (EFTPS), or by debit or credit card. You can also pay by phone using EFTPS or by debit or credit card. For more information, go to [IRS.gov/Payments](https://www.irs.gov/Payments).

Foreign wire transfers. If you have a U.S. bank account, you can use:

- EFTPS, or
- Federal Tax Collection Service (same-day wire transfer).

If you do not have a U.S. bank account, ask if your financial institution has a U.S. affiliate that can help you make same-day wire transfers.

For more information, visit [EFTPS.gov](https://www.eftps.gov). Also, see the International Guide for Paying Federal Taxes Electronically, available at [download.EFTPS.gov/International Taxpayer Fact Sheet 1010.pdf](https://www.irs.gov/pub/eftps-international-taxpayer-fact-sheet-1010.pdf).

Extensions

You can get an extension of time to file your return. In some circumstances, you can also get an extension of time to file and pay any tax due.

However, if you pay the tax due after the regular due date, interest will be charged from the regular due date until the date the tax is paid.

This publication discusses four extensions: an automatic 2-month extension, an automatic 6-month extension, an additional extension for taxpayers out of the country, and an extension of time to meet residency tests. If you served in a combat zone or qualified hazardous duty area, see [Pub. 3](#) for a discussion of extensions of deadlines.

Automatic 2-month extension. You are allowed an automatic 2-month extension to file your return and pay federal income tax if you

are a U.S. citizen or resident alien, and on the regular due date of your return:

- You are living outside the United States and Puerto Rico and your main place of business or post of duty is outside the United States and Puerto Rico, or
- You are in military or naval service on duty outside the United States and Puerto Rico.

If you use a calendar year, the regular due date of your return is April 15. Even if you are allowed an extension, you will have to pay interest on any tax not paid by the regular due date of your return.

Married taxpayers. If you file a joint return, either you or your spouse can qualify for the automatic extension. If you and your spouse file separate returns, this automatic extension applies only to the spouse who qualifies for it.

How to get the extension. To use this automatic 2-month extension, you must attach a statement to your return explaining which of the two situations listed earlier qualified you for the extension.

Automatic 6-month extension. If you are not able to file your return by the due date, you can generally get an automatic 6-month extension of time to file (but not of time to pay). To get this automatic extension, you must file a paper [Form 4868](#) or use [IRS e-file](#) (electronic filing). For more information about filing electronically, see [E-file options](#), later.

The form must show your properly estimated tax liability based on the information available to you.



You may not be eligible. You cannot use the automatic 6-month extension of time to file if:

- You want the IRS to figure your tax, or
- You are under a court order to file by the regular due date.

E-file options. You can use [e-file](#) to get an extension of time to file. You can either file [Form 4868](#) electronically or you can pay part or all of your estimate of tax due using a credit or debit card or direct transfer. You can do this by phone or over the Internet. You don't file [Form 4868](#).

First, complete [Form 4868](#) to use as a worksheet. If you think you may owe tax when you file your return, use [Part II](#) of the form to estimate your balance due.

Then, do one of the following.

1. **E-file [Form 4868](#).** You can use a tax software package with your personal computer or a tax professional to file [Form 4868](#) electronically. You will need to provide certain information from your tax return for 2020. If you wish to make a payment by electronic funds withdrawal, see the instructions for [Form 4868](#). If you [e-file](#) [Form 4868](#), do not also send a paper [Form 4868](#) unless you also mail a check or money order for your tax payment.
2. **E-file and pay by credit or debit card.** You can get an extension by paying part or all of your estimate of tax due by using a credit or debit card. You can do this by phone or over the Internet. If you do this,

you do not file [Form 4868](#). For more information, see the instructions for your tax return.

When to file. Generally, you must request the 6-month extension by the regular due date of your return.

Previous 2-month extension. If you cannot file your return within the automatic 2-month extension period, you can generally get an additional 4 months to file your return, for a total of 6 months. The 2-month period and the 6-month period start at the same time. You have to request the additional 4 months by the new due date allowed by the 2-month extension.

The additional 4 months of time to file (unlike the original 2-month extension) is not an extension of time to pay. You must make an accurate estimate of your tax based on the information available to you. If you find you cannot pay the full amount due with [Form 4868](#), you can still get the extension. You will owe interest on the unpaid amount from the original due date of the return.

You may also be charged a penalty for paying the tax late unless you have reasonable cause for not paying your tax when due. Penalties for paying the tax late are assessed from the original due date of your return, unless you qualify for the automatic 2-month extension. In that situation, penalties for paying late are assessed from the extended due date of the payment (June 15 for calendar year taxpayers).

Additional extension of time for taxpayers out of the country. In addition to the 6-month extension, taxpayers who are out of the country can request a discretionary 2-month additional extension of time to file their returns (to December 15 for calendar year taxpayers).

To request this extension, you must send the IRS a letter explaining the reasons why you need the additional 2 months. Send the letter by the extended due date (October 15 for calendar year taxpayers) to the following address:

Department of the Treasury
Internal Revenue Service
Austin, TX 73301-0045

You will not receive any notification from the IRS unless your request is denied.

The discretionary 2-month additional extension is not available to taxpayers who have an approved extension of time to file on [Form 2350](#), discussed next.

Extension of time to meet residency tests. You cannot generally get an extension of more than 6 months. However, if you are outside the United States and meet certain requirements, you may be able to get a longer extension.

You can get an extension of more than 6 months to file your tax return if you need the time to meet either the bona fide residence test or the physical presence test to qualify for either the foreign earned income exclusion or the foreign housing exclusion or deduction. The tests, the exclusions, and the deduction are explained in [chapter 4](#).

You should request an extension if all three of the following apply.

1. You are a U.S. citizen or resident alien.

2. You expect to meet either the bona fide residence test or the physical presence test, but not until after your tax return is due.
3. Your tax home is in a foreign country (or countries) throughout your period of bona fide residence or physical presence, whichever applies.

If you are granted an extension, it will generally be to 30 days beyond the date on which you can reasonably expect to qualify for an exclusion or deduction under either the bona fide residence test or the physical presence test.

How to get an extension. To obtain an extension, file Form 2350 either by giving it to a local IRS representative or other IRS employee or by mailing it to:

Department of the Treasury
Internal Revenue Service
Austin, TX 73301-0045

You must file Form 2350 by the due date for filing your return. Generally, if both your tax home and your abode are outside the United States and Puerto Rico on the regular due date of your return and you file on a calendar year basis, the due date for filing your return is June 15.

What if tests are not met. If you obtain an extension and unforeseen events make it impossible for you to meet either the bona fide residence test or the physical presence test, you should file your income tax return as soon as possible because you must pay interest on any tax due after the regular due date of the return (even though an extension was granted).



You should make any request for an extension early, so that if it is denied you still can file your return on time. Otherwise, if you file late and additional tax is due, you may be subject to a penalty.

Return filed before test is met. If you file a return before you meet the bona fide residence test or the physical presence test, you must include all income from both U.S. and foreign sources and pay the tax on that income. If you later meet either of the tests, you can claim the foreign earned income exclusion, the foreign housing exclusion, or the foreign housing deduction on [Form 1040-X](#).

Foreign Currency

You must express the amounts you report on your U.S. tax return in U.S. dollars. If you receive all or part of your income, or pay some or all of your expenses, in foreign currency, you must translate the foreign currency into U.S. dollars. How you do this depends on your functional currency. Your functional currency is generally the U.S. dollar unless you are required to use the currency of a foreign country.

You must make all federal income tax determinations in your functional currency. The U.S. dollar is the functional currency for all taxpayers except some qualified business units (QBUs). A QBU is a separate and clearly identified unit of

a trade or business that maintains separate books and records.

Even if you have a QBU, your functional currency is the dollar if any of the following apply.

- You conduct the business in U.S. dollars.
- The principal place of business is located in the United States.
- You choose to or are required to use the U.S. dollar as your functional currency.
- The business books and records are not kept in the currency of the economic environment in which a significant part of the business activities is conducted.

Make all income tax determinations in your functional currency. If your functional currency is the U.S. dollar, you must immediately translate into U.S. dollars all items of income, expense, etc. (including taxes), that you receive, pay, or accrue in a foreign currency and that will affect computation of your income tax. Use the exchange rate prevailing when you receive, pay, or accrue the item. You can generally get exchange rates from banks and U.S. Embassies. You may also need to recognize foreign currency gain or loss on certain foreign currency transactions. See section 988 and the regulations thereunder.

If you have a QBU with a functional currency that is not the U.S. dollar, make all income determinations in the QBU's functional currency, and, where appropriate, translate such income or loss at the appropriate exchange rate.

Blocked Income

You must generally report your foreign income in terms of U.S. dollars and, with one exception (see [Fulbright Grant](#), later), you must pay taxes due on it in U.S. dollars.

If, because of restrictions in a foreign country, your income is not readily convertible into U.S. dollars or into other money or property that is readily convertible into U.S. dollars, your income is "blocked" or "deferrable" income. You can report this income in one of the following two ways.

- Report the income and pay your federal income tax with U.S. dollars that you have in the United States or in some other country.
- Postpone the reporting of the income until it becomes unblocked.

If you choose to postpone the reporting of the income, you must file an information return with your tax return. For this information return, you should use another Form 1040 or 1040-SR labeled "Report of Deferrable Foreign Income, pursuant to Rev. Rul. 74-351." You must declare on the information return that you will include the deferrable income in your taxable income for the year that it becomes unblocked. You must also state that you waive any right to claim that the deferrable income was includible in your income for any earlier year.

You must report your income on your information return using the foreign currency in which you received that income. If you have blocked income from more than one foreign country, include a separate information return for each country.

Income becomes unblocked and reportable for tax purposes when it becomes convertible, or when it is converted, into U.S. dollars or into other money or property that is convertible into U.S. currency. Also, if you use blocked income for your personal expenses or dispose of it by gift, bequest, or devise, you must treat it as unblocked and reportable.

If you have received blocked income on which you have not paid tax, you should check to see whether that income is still blocked. If it is not, you should take immediate steps to pay tax on it, file a declaration or amended declaration of estimated tax, and include the income on your tax return for the year in which the income became unblocked.

If you choose to postpone reporting blocked income and in a later tax year you wish to begin including it in gross income although it is still blocked, you must obtain the permission of the IRS to do so. To apply for permission, file [Form 3115](#). You must also request permission from the IRS on Form 3115 if you have not chosen to defer the reporting of blocked income in the past, but now wish to begin reporting blocked income under the deferred method. See the [Instructions for Form 3115](#) for information on changing your accounting method.

Fulbright Grant

All income must be reported in U.S. dollars. In most cases, the tax must also be paid in U.S. dollars. If, however, at least 70% of your Fulbright grant has been paid in nonconvertible foreign currency (blocked income), you can use the currency of the host country to pay the part of the U.S. tax that is based on the blocked income.

Paying U.S. tax in foreign currency. To qualify for this method of payment, you must prepare a statement that shows the following information.

- You were a Fulbright grantee and were paid in nonconvertible foreign currency.
- The total grant you received during the year and the amount you received in nonconvertible foreign currency.
- At least 70% of the grant was paid in nonconvertible foreign currency.

The statement must be certified by the U.S. educational foundation or commission paying the grant or other person having control of grant payments to you.

You should prepare at least two copies of this statement. Attach one copy to your Form 1040 or 1040-SR and keep the other copy for identification purposes when you make a tax deposit of nonconvertible foreign currency.

Figuring actual tax. When you prepare your income tax return, you may owe tax or the entire liability may have been satisfied with your estimated tax payments. If you owe tax, figure the part due to (and payable in) the nonconvertible foreign currency by using the following formula.

$$\frac{\text{Adjusted gross income that is blocked income}}{\text{Total adjusted gross income}} \times \text{Total U.S. tax} = \text{Tax on blocked income}$$

You must attach all of the following to the return.

- A copy of the certified statement discussed earlier.
- A detailed statement showing the allocation of tax from amounts received in foreign currency and the rates of exchange used in determining your tax liability in U.S. dollars.
- The original deposit receipt for any balance of tax due that you paid in nonconvertible foreign currency.

Figuring estimated tax on nonconvertible foreign currency. If you are liable for [estimated tax](#) (discussed later), figure the amount you can pay to the IRS in nonconvertible foreign currency using the following formula.

$$\frac{\text{Adjusted gross income that is blocked income}}{\text{Total adjusted gross income}} \times \text{Total estimated U.S. tax} = \text{Estimated tax on blocked income}$$

If you must pay your host country income tax on your grant, subtract any estimated foreign tax credit that applies to your grant from the estimated tax on the blocked income.

Deposit of foreign currency with disbursing officer. Once you have determined the amount of the actual tax or estimated tax that you can pay in nonconvertible foreign currency, deposit that amount with the disbursing officer of the Department of State in the foreign country in which the foundation or commission paying the grant is located.

Estimated tax installments. You can either deposit the full estimated tax amount before the first installment due date or make four equal payments before the installment due dates. See [Estimated Tax](#), later.

Deposit receipt. Upon accepting the foreign currency, the disbursing officer will give you a receipt in duplicate. The original of this receipt (showing the amount of foreign currency deposited and its equivalent in U.S. dollars) should be attached to your Form 1040 or 1040-SR or payment voucher from [Form 1040-ES](#). Keep the copy for your records.

Does My Return Have To Be on Paper?

IRS [e-file](#) (electronic filing) is the fastest, easiest, and most convenient way to file your income tax return electronically.

IRS [e-file](#) offers accurate, safe, and fast alternatives to filing on paper. IRS computers quickly and automatically check for errors or other missing information.

Note. Returns with a foreign address can be *e-filed*.

How to e-file. There are three ways you can *e-file*.

1. Use your personal computer.
2. Use a volunteer. Many programs offering free tax help can *e-file* your return.
3. Use a tax professional. Most tax professionals can *e-file* your return.

These methods are explained in detail in the instructions for your tax return.

Where To File

If any of the following situations apply to you, do not file your return with the service center listed for your home state.

- You claim the foreign earned income exclusion.
- You claim the foreign housing exclusion or deduction.
- You live in a foreign country.

Instead, use one of the following special addresses. If you are not enclosing a check or money order, file your return with:

Department of the Treasury
Internal Revenue Service
Austin, TX 73301-0215 USA

If you are enclosing a check or money order, file your return with:

Internal Revenue Service
P.O. Box 1303
Charlotte, NC 28201-1303 USA

If you do not know where your legal residence is and you do not have a principal place of business in the United States, you can file with the appropriate address listed above.

However, you should not file with the addresses listed above if you are a bona fide resident of the U.S. Virgin Islands, Guam, or the Commonwealth of the Northern Mariana Islands during your entire tax year.

Resident of the U.S. Virgin Islands (USVI). If you are a bona fide resident of the USVI during your entire tax year, you are generally not required to file a U.S. return. However, you must file a return with the USVI.



Send your return to:

Virgin Islands Bureau
of Internal Revenue
6115 Estate Smith Bay
St. Thomas, Virgin Islands 00802

Non-USVI resident with USVI income. If you are a U.S. citizen or resident alien and you have income from sources in the USVI or income ef-

fectively connected with the conduct of a trade or business in the USVI, and you are not a bona fide resident of the USVI during your entire tax year, you must file identical tax returns with the United States and the USVI. File the original return with the United States and file a signed copy of the U.S. return (including all attachments, forms, and schedules) with the Virgin Islands Bureau of Internal Revenue.

You must complete [Form 8689](#) and attach a copy to both your U.S. return and your USVI return. You should file your U.S. return with the address listed under [Where To File](#), earlier.

See [Pub. 570](#) for information about filing U.S. Virgin Islands returns.

Resident of Guam. If you are a bona fide resident of Guam during your entire tax year, you should file a return with Guam.



Send your return to:

Department of Revenue and Taxation
Government of Guam
P.O. Box 23607
GMF, GU 96921

However, if you have income from sources within Guam and you are a U.S. citizen or resident alien, but not a bona fide resident of Guam during the entire tax year, you should file a return with the United States. Send your return to the address listed under [Where To File](#), earlier.

See [Pub. 570](#) for information about filing Guam returns.

Resident of the Commonwealth of the Northern Mariana Islands (CNMI). If you are a bona fide resident of the CNMI during your entire tax year, you should file a return with the CNMI.



Send your return to:

Division of Revenue and Taxation
Commonwealth of the Northern Mariana Islands
P.O. Box 5234, CHR8
Saipan, MP 96950

However, if you have income from sources within the CNMI and you are a U.S. citizen or resident alien, but not a bona fide resident of the CNMI during the entire tax year, you should file a return with the United States. Send your return to the address listed under [Where To File](#), earlier.

See [Pub. 570](#) for information about filing CNMI returns.

Note. Puerto Rico and American Samoa have their own separate and independent tax systems. Although their tax laws are modeled on the U.S. Internal Revenue Code, there are certain differences in law and tax rates. See [Pub. 570](#) for information about tax obligations in Puerto Rico and American Samoa.

Nonresident Alien Spouse Treated as a Resident

If, at the end of your tax year, you are married and one spouse is a U.S. citizen or a resident alien and the other is a nonresident alien, you can choose to treat the nonresident as a U.S. resident. This election includes situations in which one of you is a nonresident alien at the beginning of the tax year and a resident alien at the end of the year and the other is a nonresident alien at the end of the year.

If you make this choice, the following two rules apply.

- You and your spouse are treated, for income tax purposes and purposes of wage withholding, as U.S. residents for the tax year in which the election is made and all future tax years until the election is terminated or suspended because neither spouse is a citizen or resident of the United States at any time during a year.
- You must file a joint income tax return for the year you make the choice and attach a statement as described under [How To Make the Choice](#), later.

This means that neither of you can claim under any tax treaty not to be a U.S. resident for a tax year for which the choice is in effect.

Example 1. Pat Smith, a U.S. citizen, is married to Norman, a nonresident alien. Pat and Norman make the choice to treat Norman as a resident alien by attaching a statement to their joint return. Pat and Norman must report their worldwide income for the year they make the choice and for all later years unless the choice is ended or suspended. Although Pat and Norman must file a joint return for the year

they make the choice, they can file either joint or separate returns for later years.

Example 2. When Bob and Sharon Williams got married, both were nonresident aliens. In June of last year, Bob became a resident alien and remained a resident for the rest of the year. Bob and Sharon both choose to be treated as resident aliens by attaching a statement to their joint return for last year. Bob and Sharon must report their worldwide income for last year and all later years unless the choice is ended or suspended. Bob and Sharon must file a joint return for last year, but they can file either joint or separate returns for later years.

TIP *If you do not choose to treat your nonresident alien spouse as a U.S. resident, you may be able to use head of household filing status. To use this status, you must pay more than half the cost of maintaining a household for certain dependents or relatives other than your nonresident alien spouse. For more information, see [Pub. 501](#).*

Social Security Number (SSN)

If you choose to treat your nonresident alien spouse as a U.S. resident, your spouse must have either an SSN or an individual taxpayer identification number (ITIN).

To get an SSN for a nonresident alien spouse, apply at an office of the U.S. Social Security Administration (SSA) or U.S. consulate. You must complete Form SS-5, available at [SSA.gov](#) or by calling 800-772-1213. You must also provide original or certified copies of documents to verify that spouse's age, identity, and citizenship.

If the nonresident alien spouse is not eligible to get an SSN, he or she can file [Form W-7](#) with the IRS to apply for an ITIN when you timely file the joint return on which you choose to treat

your nonresident alien spouse as a U.S. resident. Follow the [Instructions for Form W-7](#) to submit your Form W-7 and file your return.

Individual taxpayer identification number (ITIN) renewal. Your spouse may need to renew his or her ITIN. For more information, go to [IRS.gov/ITIN](#).

How To Make the Choice

Attach a statement, signed by both spouses, to your joint return for the first tax year for which the choice applies. It should contain the following.

- A declaration that one spouse was a nonresident alien and the other spouse a U.S. citizen or resident alien on the last day of your tax year and that you choose to be treated as U.S. residents for the entire tax year.
- The name, address, and SSN (or ITIN) of each spouse. (If one spouse died, include the name and address of the person making the choice for the deceased spouse.)

You generally make this choice when you file your joint return. However, you can also make the choice by filing a joint amended return on Form 1040-X. Attach Form 1040 or 1040-SR and enter "Amended" across the top of the amended return. If you make the choice with an amended return, you and your spouse must also amend any returns that you may have filed after the year for which you made the choice.

You must generally file the amended joint return within 3 years from the date you filed your original U.S. income tax return or 2 years from the date you paid your income tax for that year, whichever is later.

Table 1-1. Options for Ending the Choice To Treat Nonresident Alien Spouse as a Resident

Options for ending the choice to treat nonresident alien spouse as a resident

Revocation	<p>Either spouse can revoke the choice for any tax year.</p> <p>The revocation must be made by the due date for filing the tax return for that tax year.</p> <p>The spouse who revokes the choice must attach a signed statement declaring that the choice is being revoked. The statement revoking the choice must include the following.</p> <ul style="list-style-type: none"> The name, address, and SSN (or TIN) of each spouse. The name and address of any person who is revoking the choice for a deceased spouse. A list of any states, foreign countries, and U.S. territories that have community property laws in which either spouse is domiciled or where real property is located from which either spouse receives income. <p>If the spouse revoking the choice does not have to file a return and does not file a claim for refund, send the statement to the Internal Revenue Service Center where the last joint return was filed.</p>
Death	<p>The death of either spouse ends the choice, beginning with the first tax year following the year in which the spouse died.</p> <p>If the surviving spouse is a U.S. citizen or resident alien and is entitled to the joint tax rates as a surviving spouse, the choice will not end until the close of the last year for which these joint rates may be used.</p> <p>If both spouses die in the same tax year, the choice ends on the first day after the close of the tax year in which the spouses died.</p>
Divorce or legal separation	<p>A divorce or legal separation ends the choice as of the beginning of the tax year in which the legal separation occurs.</p>
Inadequate records	<p>The IRS can end the choice for any tax year that either spouse has failed to keep adequate books, records, and other information necessary to determine the correct income tax liability, or to provide adequate access to those records.</p>

Suspending the Choice

The choice to be treated as a resident alien does not apply to any later tax year if neither of you is a U.S. citizen or resident alien at any time during the later tax year.

Example. Dick Brown was a resident alien on December 31, 2018, and married to Judy, a nonresident alien. They chose to treat Judy as a resident alien and filed joint income tax returns for 2018 and 2019. On January 10, 2020, Dick became a nonresident alien. Judy had remained a nonresident alien. Because Dick was a resident alien during part of 2020, Dick and Judy can file joint or separate returns for that year. Neither Dick nor Judy was a resident alien at any time during 2021 and their choice is suspended for that year. For 2021, both are treated as nonresident aliens. If Dick becomes a resident alien again in 2022, their choice is no longer suspended and both are treated as resident aliens.

Ending the Choice

Once made, the choice to be treated as a resident applies to all later years unless suspended (as explained earlier) or ended in one of the ways shown in [Table 1-1](#).

If the choice is ended for any of the reasons listed in Table 1-1, neither spouse can make a choice in any later tax year.

Estimated Tax

The requirements for determining who must pay estimated tax are the same for a U.S. citizen or resident abroad as for a taxpayer in the United States. For current instructions on making estimated tax payments, see [Form 1040-ES](#).

If you had a tax liability for 2021, you may have to pay estimated tax for 2022. Generally, you must make estimated tax payments for 2022 if you expect to owe at least \$1,000 in tax for 2022 after subtracting your withholding and credits and you expect your withholding and credits to be less than the smaller of:

1. 90% of the tax to be shown on your 2022 tax return, or
2. 100% of the tax shown on your 2021 tax return. (The return must cover all 12 months.)

If less than two-thirds of your gross income for 2021 and 2022 is from farming or fishing and your adjusted gross income for 2021 is more than \$150,000 (\$75,000 if you are married and file separately), substitute 110% for 100% in (2) earlier. See [Pub. 505](#) for more information.

The first installment of estimated tax is due on April 15, 2022. For more information about figuring your estimated tax, see [Pub. 505](#).

Foreign earned income exclusion. When figuring your estimated gross income, subtract amounts you expect to exclude under the foreign earned income exclusion and the foreign housing exclusion. In addition, you can reduce your income by your estimated foreign housing

deduction. However, you must estimate tax on your nonexcluded income using the tax rates that will apply had you not excluded the income. If the actual amount of the exclusion or deduction is less than you estimate, you may have to pay a penalty for underpayment of estimated tax.

For more information, see the [Instructions for Form 2555](#).

Other Forms You May Have To File

FinCEN Form 114. You must file FinCEN Form 114, Report of Foreign Bank and Financial Accounts (FBAR), if you had any financial interest in, or signature or other authority over, a bank, securities, or other financial account in a foreign country. You do not need to file the report if the assets are with a U.S. military banking facility operated by a financial institution or if the combined assets in the account(s) are \$10,000 or less during the entire year.

FinCEN Form 114 is filed electronically with the Financial Crimes Enforcement Network (FinCEN). The due date for FBAR filings is April 15. FinCEN will grant an automatic extension to October 15 if you are unable to meet the FBAR annual due date of April 15. The FBAR due date for foreign financial accounts maintained during calendar year 2021 is April 15, 2022, to coincide with the filing date for the 2021 Form 1040 or 1040-SR. For more information, go to [bsaeiling.fincen.treas.gov/main.html](#).

FinCEN Form 105. You must file FinCEN Form 105, Report of International Transportation of Currency or Monetary Instruments, if you physically transport, mail, ship, or cause to be physically transported, mailed, or shipped, into or out of the United States, currency or other monetary instruments totaling more than \$10,000 at one time. Certain recipients of currency or monetary instruments must also file FinCEN Form 105.

More information about the filing of FinCEN Form 105 can be found in the instructions on the back of the form, available at [fincen.gov/sites/default/files/shared/fin105_cmir.pdf](#).

Form 8938. You must file Form 8938 to report the ownership of specified foreign financial assets if the total value of those assets exceeds an applicable threshold amount (the "reporting threshold"). The reporting threshold varies depending on whether you live in the United States, are married, or file a joint income tax return with your spouse. Specified foreign financial assets include any financial account maintained by a foreign financial institution and, to the extent held for investment, any stock, securities, or any other interest in a foreign entity and any financial instrument or contract with an issuer or counterparty that is not a U.S. person.

You may have to pay penalties if you are required to file Form 8938 and fail to do so, or if you have an understatement of tax due to any transaction involving an undisclosed foreign financial asset.

More information about the filing of Form 8938 can be found in the separate [Instructions for Form 8938](#).

2.

Withholding Tax

Topics

This chapter discusses:

- Withholding income tax from the pay of U.S. citizens,
- Withholding tax at a flat rate, and
- Social security and Medicare taxes.

Useful Items

You may want to see:

Publication

- 505** Tax Withholding and Estimated Tax

Form (and Instructions)

- 673** Statement for Claiming Exemption From Withholding on Foreign Earned Income Eligible for the Exclusion Provided by Section 911
- W-4** Employee's Withholding Allowance Certificate
- W-9** Request for Taxpayer Identification Number and Certification

See [chapter 7](#) for information about getting this publication and these forms.

Income Tax Withholding

U.S. employers must generally withhold U.S. income tax from the pay of U.S. citizens working abroad unless the employer is required by foreign law to withhold foreign income tax.

Foreign earned income exclusion. Your employer does not have to withhold U.S. income taxes from wages you earn abroad if it is reasonable to believe that you will exclude them from income under the foreign earned income exclusion or the foreign housing exclusion.

Your employer should withhold taxes from any wages you earn for working in the United States.

Statement. You can give a statement to your employer indicating that you expect to qualify for the foreign earned income exclusion under either the bona fide residence test or the physical presence test and indicating your estimated housing cost exclusion.

[Form 673](#) is an acceptable statement. You can use Form 673 only if you are a U.S. citizen. You do not have to use the form and can prepare your own statement. For more information, go to [IRS.gov/Form 673](#).

Generally, your employer can stop the withholding once you submit the statement that includes a declaration that the statement is made under penalties of perjury. However, if your employer has reason to believe that you will not qualify for either the foreign earned income or

the foreign housing exclusion, your employer must continue to withhold.

Your employer must consider any information about pay you received from any other source outside the United States in determining whether your foreign earned income is more than the limit on either the foreign earned income exclusion or the foreign housing exclusion.

Foreign tax credit. If you plan to take a foreign tax credit, you may be able to adjust your withholding on Form W-4. You can take these additional tax credits only for foreign tax credits attributable to taxable salary or wage income. For more information, see the instructions for Step 3 of Form W-4.

Withholding from pension payments. U.S. payers of benefits from employer-deferred compensation plans, individual retirement plans, and commercial annuities must generally withhold income tax from payments delivered outside of the United States. You can choose exemption from withholding if you:

- Provide the payer of the benefits with a residence address in the United States or a U.S. territory, or
- Certify to the payer that you are not a U.S. citizen or resident alien or someone who left the United States to avoid tax.

Check your withholding. Before you report U.S. income tax withholding on your tax return, you should carefully review all information documents, such as Form W-2 and the Form 1099 information returns. Compare other records, such as final pay records or bank statements, with Form W-2 or Form 1099 to verify the withholding on these forms. Check your U.S. income tax withholding even if you pay someone else to prepare your tax return. You may be assessed penalties and interest if you claim more than your correct amount of withholding allowances.

30% Flat Rate Withholding

Generally, U.S. source gross income that is not effectively connected to a U.S. trade or business, such as U.S. source dividends and royalties, is subject to withholding tax at a flat 30% (or lower treaty) rate if paid to nonresident aliens. If you are a U.S. citizen or resident alien and this tax is withheld in error from payments to you because you have a foreign address, you should notify the payer of the income to stop the withholding. Use Form W-9 to notify the payer.

You can claim the tax withheld in error as a withholding credit on your tax return if the amount isn't adjusted by the payer. See the [Instructions for Form 1040](#) for how to claim the credit.

Social security benefits paid to residents. If you are a lawful permanent resident (green card holder) and a flat 30% tax was withheld in error on your social security benefits, you must file a Form 1040 or 1040-SR with the Internal Revenue Service Center at the address listed under [Where To File](#), earlier, to determine if you are

entitled to a refund. The following information must be submitted with your Form 1040 or 1040-SR.

- A copy of Form SSA-1042S, Social Security Benefit Statement.
- A copy of your "green card."
- A signed declaration that includes the following statements.
"I am a U.S. lawful permanent resident and my green card has been neither revoked nor administratively or judicially determined to have been abandoned. I am filing a U.S. income tax return for the tax year as a resident alien reporting all of my worldwide income. I have not claimed benefits for the tax year under an income tax treaty as a nonresident alien."

Social Security and Medicare Taxes

Social security and Medicare taxes may apply to wages paid to an employee regardless of where the services are performed.

General Information

In general, U.S. social security and Medicare taxes do not apply to wages for services you perform as an employee outside the United States unless one of the following exceptions applies.

1. You perform the services on or in connection with an [American vessel or aircraft](#) (defined later) and either:
 - a. You entered into your employment contract within the United States, or
 - b. The vessel or aircraft touches at a U.S. port while you are employed on it.
2. The service is designated as employment for U.S. social security and Medicare tax purposes under a [bilateral \(totalization\) social security agreement](#) (discussed later).
3. You are working for an [American employer](#) (defined later).
4. You are working for a [foreign affiliate](#) (defined later) of an American employer under a voluntary agreement entered into between the American employer and the U.S. Department of the Treasury.

American vessel or aircraft. An American vessel is any vessel documented or numbered under the laws of the United States and any other vessel whose crew is employed solely by one or more U.S. citizens, residents, or corporations. An American aircraft is an aircraft registered under the laws of the United States.

American employer. An American employer includes any of the following.

- The U.S. Government or any of its instrumentalities.
- An individual who is a resident of the United States.
- A partnership of which at least two-thirds of the partners are U.S. residents.

- A trust of which all the trustees are U.S. residents.
- A corporation organized under the laws of the United States, any U.S. state, or the District of Columbia, Puerto Rico, the U.S. Virgin Islands, Guam, or American Samoa.

An American employer also includes any foreign person with an employee who is performing services in connection with a contract between the U.S. Government (or any instrumentality thereof) and a member of a domestically controlled group of entities which includes such foreign person.

Foreign affiliate. A foreign affiliate of an American employer is any foreign entity in which the American employer has at least a 10% interest, directly or through one or more entities. For a corporation, the 10% interest must be in its voting stock. For any other entity, the 10% interest must be in its profits.

Form 2032 is used by American employers to extend social security coverage to U.S. citizens and resident aliens working abroad for foreign affiliates of American employers. Once you enter into an agreement, coverage cannot be terminated.

Excludable meals and lodging. Social security tax doesn't apply to the value of meals and lodging provided to you for the convenience of your employer if it is reasonable to believe that you will be able to exclude the value from your income.

Bilateral Social Security (Totalization) Agreements

The United States has entered into agreements with some foreign countries to coordinate social security coverage and taxation of workers who are employed in those countries. These agreements are commonly referred to as "totalization agreements." Under these agreements, dual coverage and dual contributions (taxes) for the same work are eliminated. The agreements generally make sure that you pay social security taxes to only one country.

Generally, under these agreements, you will only be subject to social security taxes in the country where you are working. However, if you are temporarily sent to work in a foreign country and your pay would otherwise be subject to social security taxes in both the United States and that country, you can generally remain covered only by U.S. social security.

You can get more information on specific agreements at [SSA.gov/international/totalization_agreements.html](#).

Or you can write to:

Social Security Administration
Office of Data Exchange
and International Agreements
6401 Security Blvd., 4700 Annex
Baltimore, MD 21235

Covered by United States only. If your pay in a foreign country is subject only to U.S. social security tax and is exempt from foreign social security tax, your employer should get a

certificate of coverage from the SSA's Office of Earnings and International Operations. Employers can request a certificate of coverage online at [SSA.gov/international/CoC_link.html](https://ssa.gov/international/CoC_link.html).

Covered by foreign country only. If you are permanently working in a foreign country with which the United States has a social security agreement and, under the agreement, your pay is exempt from U.S. social security tax, you or your employer should get a statement from the authorized official or agency of the foreign country verifying that your pay is subject to social security coverage in that country.

If the authorities of the foreign country will not issue such a statement, either you or your employer should get a statement from the U.S. SSA's Office of Earnings and International Operations at the website listed earlier. The statement should indicate that your wages aren't covered by the U.S. social security system.

This statement should be kept by your employer because it establishes that your pay is exempt from U.S. social security tax.

Only wages paid on or after the effective date of the totalization agreement can be exempt from U.S. social security tax.

3.

Self-Employment Tax

Topics

This chapter discusses:

- Who must pay self-employment tax,
- Who is exempt from self-employment tax,
- Who can defer self-employment tax payments, and
- Which self-employed individuals can take the refundable income tax credits for sick and family leave.

Useful Items

You may want to see:

Publication

- 334** Tax Guide for Small Business
- 517** Social Security and Other Information for Members of the Clergy and Religious Workers

Form (and Instructions)

- Formulario 1040-PR** Planilla para la Declaración de la Contribución Federal sobre el Trabajo por Cuenta Propia
- Form 1040-SS** U.S. Self-Employment Tax Return
- Form 4361** Application for Exemption From Self-Employment Tax for Use

by Ministers, Members of Religious Orders and Christian Science Practitioners

- Schedule SE (Form 1040)** Self-Employment Tax
- Form 7202** Credits for Sick Leave and Family Leave for Certain Self-Employed Individuals

See [chapter 7](#) for information about getting these publications and forms.

Who Must Pay Self-Employment Tax?

If you are a self-employed U.S. citizen or resident, the rules for paying self-employment tax are generally the same whether you are living in the United States or abroad.

The self-employment tax is a social security and Medicare tax on net earnings from self-employment. You must pay self-employment tax if your net earnings from self-employment are at least \$400.

For 2021, the maximum amount of net earnings from self-employment that is subject to the social security portion of the tax is \$142,800. All net earnings are subject to the Medicare portion of the tax. Additional Medicare Tax may apply to you if your net earnings from self-employment exceed a threshold amount (based on your filing status).

Employed by a U.S. Church

If you were employed by a U.S. church or a qualified church-controlled organization that chose exemption from social security and Medicare taxes and you received wages of \$108.28 or more from the organization, the amounts paid to you are subject to self-employment tax. However, you can choose to be exempt from social security and Medicare taxes if you are a member of a recognized religious sect. See [Pub. 517](#) for more information about church employees and self-employment tax.

Effect of Exclusion

You must take all of your self-employment income into account in figuring your net earnings from self-employment, even income that is exempt from income tax because of the foreign earned income exclusion.

Example. You are in business abroad as a consultant and qualify for the foreign earned income exclusion. Your foreign earned income is \$95,000, your business deductions total \$27,000, and your net profit is \$68,000. You must pay self-employment tax on your net profit of \$68,000, even though you are qualified for the foreign earned income exclusion.

Members of the Clergy

If you are a member of the clergy, you are treated as self-employed for self-employment tax purposes. Your U.S. self-employment tax is

based upon net earnings from self-employment figured without regard to the foreign earned income exclusion or the foreign housing exclusion.

You can receive exemption from coverage for your ministerial duties if you conscientiously oppose public insurance due to religious reasons or if you oppose it due to the religious principles of your denomination. You must file Form 4361 to apply for this exemption.

This subject is discussed in further detail in [Pub. 517](#).

Income From U.S. Territories

If you are a U.S. citizen or resident alien and you own and operate a business in a U.S. territory (Puerto Rico, Guam, the Commonwealth of the Northern Mariana Islands, American Samoa, or the U.S. Virgin Islands), you must pay tax on your net earnings from self-employment (if they are \$400 or more) from those sources. You must pay the self-employment tax whether or not the income is exempt from U.S. income taxes (or whether or not you must otherwise file a U.S. income tax return). Unless your situation is described below, attach Schedule SE (Form 1040) to your U.S. income tax return.

If you do not have to file Form 1040 or 1040-SR with the United States and you are a resident of any of the U.S. territories listed in the preceding paragraph, figure your self-employment tax on Form 1040-SS. Residents of Puerto Rico may file the Spanish-language Formulario 1040-PR.

If you are not enclosing a check or money order, file your return with:

Department of the Treasury
Internal Revenue Service
Austin, TX 73301-0215

If you are enclosing a check or money order, file your return with:

Internal Revenue Service
P.O. Box 1303
Charlotte, NC 28201-1303

Exemption From Dual-Country Social Security and Medicare Taxes

The United States may reach agreements with foreign countries to eliminate dual coverage and dual contributions (taxes) to social security systems for the same work. See [Bilateral Social Security \(Totalization\) Agreements](#) in chapter 2 under *Social Security and Medicare Taxes*. As a general rule, self-employed persons who are subject to dual taxation will only be covered by the social security system of the country where they reside. For more information on how a specific agreement affects self-employed persons, see [Bilateral Social Security \(Totalization\) Agreements](#) in chapter 2.

If your self-employment earnings should be exempt from foreign social security tax and subject only to U.S. self-employment tax, you should request a certificate of coverage from the U.S. SSA's Office of Earnings and International Operations. The certificate will establish your exemption from the foreign social security tax.

You can request a certificate of coverage online at [SSA.gov/international/CoC_link.html](https://ssa.gov/international/CoC_link.html).

COVID-19 Emergency Relief for Self-Employed Individuals

The COVID-19 virus has caused a global health emergency that has prompted the creation of various types of tax relief applicable to employees and self-employed individuals. The deferral of self-employment tax payments and the credits for sick and family leave, both available for certain self-employed individuals, are discussed later.

Deferral of Employment Tax Deposits and Payments

Section 2302 of the CARES Act permits self-employed individuals to defer payment of a portion of their 2020 self-employment tax until 2021 and 2022. Specifically, the payment of 50% of the social security tax imposed on net earnings from self-employment earned during the period beginning on March 27, 2020, and ending December 31, 2020, may be deferred. 50% of the amount deferred must be paid by December 31, 2021, and the remaining amount must be paid by December 31, 2022.

The deferral is calculated and reported on Part III of Schedule SE (Form 1040). For more information, see Schedule SE (Form 1040) and its instructions, available at [IRS.gov/ScheduleSE](https://irs.gov/ScheduleSE).

Credits for Sick and Family Leave

Sections 7002 and 7004 of the Families First Coronavirus Response Act (FFCRA) created two credits against income tax for eligible self-employed individuals who were unable to work during periods of leave beginning April 1, 2020, through March 31, 2021, due to conditions related to the coronavirus. Sections 9642 and 9643 of the American Rescue Plan Act of 2021 (the ARP) set forth two similar income tax credits for periods of leave beginning April 1, 2021, through September 30, 2021. These credits are calculated and reported on the Form 7202 included with a taxpayer's annual income tax returns.

Credit for sick leave for certain self-employed individuals. You may be entitled to claim the credit for sick leave if you were unable to perform services as a self-employed individual because of certain coronavirus-related care (1) you required, and/or (2) you provided to another. For more information, see Form 7202,

Part I, and its instructions, available at [IRS.gov/Form7202](https://irs.gov/Form7202).

Credit for family leave for certain self-employed individuals. For periods of leave beginning April 1, 2020, through March 31, 2021, you may be entitled to claim the credit for family leave if you were unable to perform services as a self-employed individual because of certain coronavirus-related care you provided to a son or daughter under the age of 18. For periods of leave beginning April 1, 2021, through September 30, 2021, you may be entitled to claim the credit for family leave for any of the reasons for which you could have been entitled to claim the credit for sick leave, including certain coronavirus-related care (1) you required, and/or (2) you provided to another. For more information, see Form 7202, Part II, and its instructions, available at [IRS.gov/Form7202](https://irs.gov/Form7202).

4.

Foreign Earned Income and Housing: Exclusion – Deduction

Topics

This chapter discusses:

- Who qualifies for the foreign earned income exclusion, the foreign housing exclusion, and the foreign housing deduction;
- The requirements that must be met to claim either exclusion or the deduction;
- How to determine the amount of the foreign earned income exclusion;
- How to figure the foreign housing exclusion and the foreign housing deduction; and

Useful Items

You may want to see:

Publication

- 519** U.S. Tax Guide for Aliens
- 570** Tax Guide for Individuals With Income From U.S. Possessions
- 596** Earned Income Credit (EIC)

Form (and Instructions)

- 1040-X** Amended U.S. Individual Income Tax Return

- 2555** Foreign Earned Income

See [chapter 7](#) for information about getting these publications and forms.

Who Qualifies for the Exclusions and the Deduction?

If you meet certain requirements, you may qualify for the foreign earned income and foreign housing exclusions and the foreign housing deduction.

If you are a U.S. citizen or a resident alien and you live abroad, you are taxed on your worldwide income. However, you may qualify to exclude from income up to \$108,700 of your foreign earnings. In addition, you can exclude or deduct certain foreign housing amounts. See [Foreign Earned Income Exclusion](#) and [Foreign Housing Exclusion and Deduction](#), later.

You may also be entitled to exclude from income the value of meals and lodging provided to you by your employer. See [Exclusion of Meals and Lodging](#), later.

Requirements

To claim the foreign earned income exclusion, the foreign housing exclusion, or the foreign housing deduction, you must meet all three of the following requirements.

1. Your tax home must be in a foreign country.
2. You must have foreign earned income.
3. You must be one of the following.
 - a. A U.S. citizen who is a bona fide resident of a foreign country or countries for an uninterrupted period that includes an entire tax year.
 - b. A U.S. resident alien who is a citizen or national of a country with which the United States has an income tax treaty in effect and who is a bona fide resident of a foreign country or countries for an uninterrupted period that includes an entire tax year.
 - c. A U.S. citizen or a resident alien who is physically present in a foreign country or countries for at least 330 full days during any period of 12 consecutive months.

See [Pub. 519](#) to find out if you are a U.S. resident alien for tax purposes and whether you keep that alien status when you temporarily work abroad.

If you are a nonresident alien married to a U.S. citizen or resident alien, and both you and your spouse choose to treat you as a resident alien, you are a resident alien for tax purposes. For information on making the choice, see the discussion in chapter 1 under [Nonresident Alien Spouse Treated as a Resident](#).

Waiver of minimum time requirements. The minimum time requirements for bona fide residence and physical presence can be waived if you must leave a foreign country because of war, civil unrest, or similar adverse conditions in that country. This is fully explained under [Waiver of Time Requirements](#), later.

See [Figure 4-A](#) and information in this chapter to determine if you are eligible to claim either exclusion or the deduction.

Tax Home in Foreign Country

To qualify for the foreign earned income exclusion, the foreign housing exclusion, or the foreign housing deduction, your tax home must be in a foreign country throughout your period of bona fide residence or physical presence abroad. See [Bona Fide Residence Test](#) and [Physical Presence Test](#), later.

Tax Home

Your tax home is the general area of your main place of business, employment, or post of duty, regardless of where you maintain your family home. Your tax home is the place where you are permanently or indefinitely engaged to work as an employee or self-employed individual. Having a “tax home” in a given location doesn’t necessarily mean that the given location is your residence or domicile for tax purposes.

If you do not have a regular or main place of business because of the nature of your work, your tax home may be the place where you regularly live. If you have neither a regular or main place of business nor a place where you regularly live, you are considered an itinerant and your tax home is wherever you work.

You aren’t considered to have a tax home in a foreign country for any period in which your abode is in the United States, unless you are serving in support of the U.S. Armed Forces in an area designated as a combat zone. See [Service in a combat zone](#), later. Otherwise, if your abode is in the United States, you will not meet the tax home test and cannot claim the foreign earned income exclusion.

The location of your abode is based on where you maintain your family, economic, and personal ties. Your abode is not necessarily in the United States merely because you maintain a dwelling in the United States, whether or not your spouse or dependents use the dwelling. Your abode is also not necessarily in the United States while you are temporarily in the United States; however, these factors can contribute to your having an abode in the United States.

Example 1. You are employed on an offshore oil rig in the territorial waters of a foreign country and work a 28-day on/28-day off schedule. You return to your family residence in the United States during your off periods. You are considered to have an abode in the United States and don’t satisfy the tax home test in the foreign country. You can’t claim either of the exclusions or the housing deduction.

Example 2. For several years, you were a marketing executive with a producer of machine tools in Toledo, Ohio. In November of last year, your employer transferred you to London, England, for a minimum of 18 months to set up a sales operation for Europe. Before you left, you distributed business cards showing your business and home addresses in London. You kept ownership of your home in Toledo but rented it to another family. You placed your car in storage. In November of last year, you moved your spouse, children, furniture, and family pets to a home your employer rented for you in London.

Shortly after moving, you leased a car and you and your spouse got British driver’s licenses. Your entire family got library cards for the local public library. You and your spouse opened bank accounts with a London bank and secured consumer credit. You joined a local business league and both you and your spouse became active in the neighborhood civic association and worked with a local charity. Your abode is in London for the time you live there. You satisfy the tax home test in the foreign country.

Service in a combat zone. U.S. citizens or residents serving in an area designated by the President of the United States by Executive Order as a combat zone for purposes of section 112 in support of the U.S. Armed Forces can qualify as having a tax home in a foreign country, even if they have an abode within the United States. For a list of IRS-recognized combat zones, go to [IRS.gov/Newsroom/Combat-Zones](https://www.irs.gov/Newsroom/Combat-Zones).

Temporary or Indefinite Assignment

The location of your tax home often depends on whether your assignment is temporary or indefinite. If you are temporarily absent from your tax home in the United States on business, you may be able to deduct your away-from-home expenses (for travel, meals, and lodging), but you wouldn’t qualify for the foreign earned income exclusion. If your new work assignment is for an indefinite period, your new place of employment becomes your tax home and you wouldn’t be able to deduct any of the related expenses that you have in the general area of this new work assignment. If your new tax home is in a foreign country and you meet the other requirements, your earnings may qualify for the foreign earned income exclusion.

If you expect your employment away from home in a single location to last, and it does last, for 1 year or less, it is temporary unless facts and circumstances indicate otherwise.

If you expect it to last for more than 1 year, it is indefinite.

If you expect it to last for 1 year or less, but at some later date you expect it to last longer than 1 year, it is temporary (in the absence of facts and circumstances indicating otherwise) until your expectation changes. Once your expectation changes, it is indefinite.

Foreign Country

To meet the bona fide residence test or the physical presence test, you must live in or be present in a foreign country. A foreign country includes any territory under the sovereignty of a government other than that of the United States.

The term “foreign country” includes the country’s airspace and territorial waters, but not international waters and the airspace above them. It also includes the seabed and subsoil of those submarine areas adjacent to the country’s territorial waters over which it has exclusive rights under international law to explore and exploit the natural resources.

The term “foreign country” doesn’t include Antarctica or U.S. territories such as Puerto Rico, Guam, the Commonwealth of the Northern Mariana Islands, the U.S. Virgin Islands, and American Samoa. For purposes of the foreign earned income exclusion, the foreign housing exclusion, and the foreign housing deduction, the terms “foreign,” “abroad,” and “overseas” refer to areas outside the United States and those areas listed or described in the previous sentence.

American Samoa, Guam, and the Commonwealth of the Northern Mariana Islands

Residence or presence in a U.S. territory doesn’t qualify you for the foreign earned income exclusion. You may, however, qualify for an exclusion of your territory income on your U.S. return.

American Samoa. There is a territory exclusion available to individuals who are bona fide residents of American Samoa for the entire tax year. Gross income from sources within American Samoa may be eligible for this exclusion. Income that is effectively connected with the conduct of a trade or business within American Samoa may also be eligible for this exclusion. Use [Form 4563](#) to figure the exclusion.

Guam and the Commonwealth of the Northern Mariana Islands. An exclusion will be available to residents of Guam and the Commonwealth of the Northern Mariana Islands if, and when, new implementation agreements take effect between the United States and those territories.

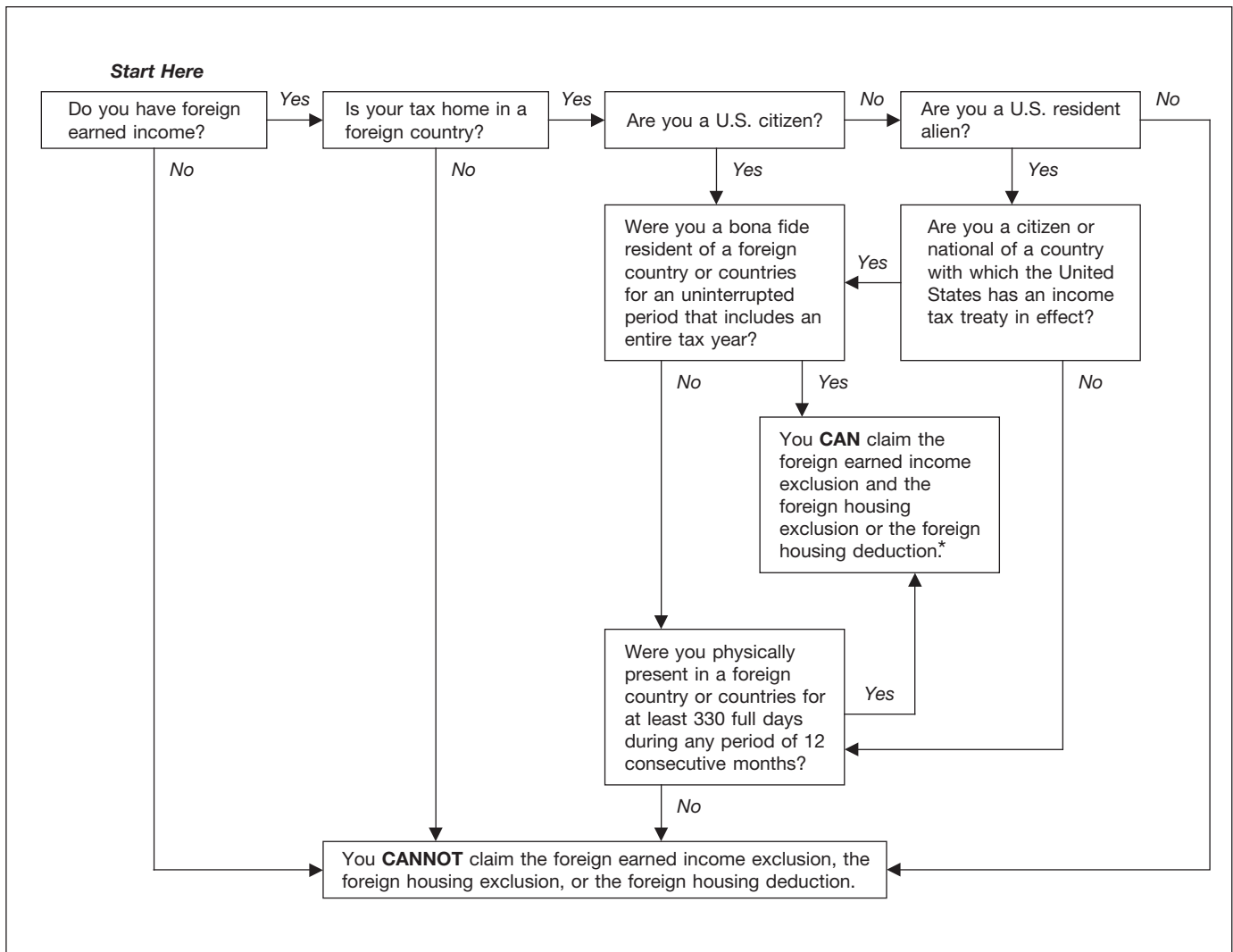
For more information, see [Pub. 570](#).

Puerto Rico and the U.S. Virgin Islands

Residents of Puerto Rico and the U.S. Virgin Islands can’t claim the foreign earned income exclusion or the foreign housing exclusion.

Puerto Rico. Generally, if you are a U.S. citizen who is a bona fide resident of Puerto Rico for the entire tax year, you aren’t subject to U.S. tax on income from Puerto Rican sources. This doesn’t include amounts paid for services performed as an employee of the United States. However, you are subject to U.S. tax on your

Figure 4-A. Can I Claim Either Exclusion or the Deduction?



* Foreign housing exclusion applies only to employees. Foreign housing deduction applies only to the self-employed.

income from sources outside Puerto Rico. In figuring your U.S. tax, you can't deduct expenses allocable to income not subject to tax.

Bona Fide Residence Test

You meet the bona fide residence test if you are a bona fide resident of a foreign country or countries for an uninterrupted period that includes an entire tax year. You can use the bona fide residence test to qualify for the exclusions and the deduction only if you are either:

- A U.S. citizen, or
- A U.S. resident alien who is a citizen or national of a country with which the United States has an income tax treaty in effect.

You do not automatically acquire bona fide resident status merely by living in a foreign country or countries for 1 year. If you go to a foreign country to work on a particular job for a specified period of time, you won't ordinarily be regarded as a bona fide resident of that country even though you work there for 1 tax year or longer. The length of your stay and the nature of your job are only two of the factors to be considered in determining whether you meet the bona fide residence test.

Bona fide residence. To meet the bona fide residence test, you must have established a bona fide residence in a foreign country.

Your bona fide residence isn't necessarily the same as your domicile. Your domicile is your permanent home, the place to which you always return or intend to return.

Example. You could have your domicile in Cleveland, Ohio, and a bona fide residence in Edinburgh, Scotland, if you intend to return eventually to Cleveland.

The fact that you go to Scotland does not automatically make Scotland your bona fide residence. If you go there as a tourist, or on a short business trip, and return to the United States, you haven't established bona fide residence in Scotland. But if you go to Scotland to work for an indefinite or extended period and you set up permanent quarters there for yourself and your family, you have probably established a bona fide residence in a foreign country, even though you intend to return eventually to the United States.

You are clearly not a resident of Scotland in the first instance. However, in the second, you are a resident because your stay in Scotland appears to be permanent. If your residency is

not as clearly defined as either of these illustrations, it may be more difficult to decide whether you have established a bona fide residence.

Determination. Questions of bona fide residence are determined according to each individual case, taking into account factors such as your intention, the purpose of your trip, and the nature and length of your stay abroad.

To meet the bona fide residence test, you must show the IRS that you have been a bona fide resident of a foreign country or countries for an uninterrupted period that includes an entire tax year. The IRS decides whether you are a bona fide resident of a foreign country largely on the basis of facts you report on Form 2555. The IRS cannot make this determination until you file Form 2555.

Statement to foreign authorities. You aren't considered a bona fide resident of a foreign country if you make a statement to the authorities of that country that you aren't a resident of that country, and the authorities:

- Hold that you aren't subject to their income tax laws as a resident, or
- Haven't made a final decision on your status.

Special agreements and treaties. An income tax exemption provided in a treaty or other international agreement won't in itself prevent you from being a bona fide resident of a foreign country. Whether a treaty prevents you from becoming a bona fide resident of a foreign country is determined under all provisions of the treaty, including specific provisions relating to residence or privileges and immunities.

Example 1. You are a U.S. citizen employed in the United Kingdom by a U.S. employer under contract with the U.S. Armed Forces. You aren't subject to the North Atlantic Treaty Status of Forces Agreement. You may be a bona fide resident of the United Kingdom.

Example 2. You are a U.S. citizen in the United Kingdom who qualifies as an "employee" of an armed service or as a member of a "civilian component" under the North Atlantic Treaty Status of Forces Agreement. You aren't a bona fide resident of the United Kingdom.

Example 3. You are a U.S. citizen employed in Japan by a U.S. employer under contract with the U.S. Armed Forces. You are subject to the agreement of the Treaty of Mutual Cooperation and Security between the United States and Japan. Being subject to the agreement doesn't make you a bona fide resident of Japan.

Example 4. You are a U.S. citizen employed as an "official" by the United Nations in Switzerland. You are exempt from Swiss taxation on the salary or wages paid to you by the United Nations. This doesn't prevent you from being a bona fide resident of Switzerland.

Effect of voting by absentee ballot. If you are a U.S. citizen living abroad, you can vote by absentee ballot in any election held in the United States without risking your status as a bona fide resident of a foreign country.

However, if you give information to the local election officials about the nature and length of your stay abroad that does not match the information you give for the bona fide residence test, the information given in connection with absentee voting will be considered in determining your status, but won't necessarily be conclusive.

Uninterrupted period including entire tax year. To meet the bona fide residence test, you must reside in a foreign country or countries for an uninterrupted period that includes an entire tax year. An entire tax year is from January 1 through December 31 for taxpayers who file their income tax returns on a calendar year basis.

During the period of bona fide residence in a foreign country, you can leave the country for brief or temporary trips back to the United States or elsewhere for vacation or business. To keep your status as a bona fide resident of a foreign country, you must have a clear intention of returning from such trips, without unreasonable delay, to your foreign residence or to a new bona fide residence in another foreign country.

Example 1. You arrived with your family in Lisbon, Portugal, on November 1, 2020. Your

assignment is indefinite, and you intend to live there with your family until your company sends you to a new post. You immediately established residence there. You spent April of 2021 at a business conference in the United States. Your family stayed in Lisbon. Immediately following the conference, you returned to Lisbon and continued living there. On January 1, 2022, you completed an uninterrupted period of residence for a full tax year (2021), and you meet the bona fide residence test.

Example 2. Assume the same facts as in *Example 1*, except that you transferred back to the United States on December 13, 2021. You would not meet the bona fide residence test because your bona fide residence in the foreign country, although it lasted more than a year, didn't include a full tax year. You may, however, qualify for the foreign earned income exclusion or the housing exclusion or deduction under the [physical presence test](#) (discussed later).

Bona fide resident for part of a year. Once you have established bona fide residence in a foreign country for an uninterrupted period that includes an entire tax year, you are a bona fide resident of that country for the period starting with the date you actually began the residence and ending with the date you abandon the foreign residence. Your period of bona fide residence can include an entire tax year plus parts of 2 other tax years.

Example. You were a bona fide resident of Singapore from March 1, 2019, through September 14, 2021. On September 15, 2021, you returned to the United States. Since you were a bona fide resident of a foreign country for all of 2020, you were also a bona fide resident of a foreign country from March 1, 2019, through the end of 2019 and from January 1, 2021, through September 14, 2021.

Reassignment. If you are assigned from one foreign post to another, you may or may not have a break in foreign residence between your assignments, depending on the circumstances.

Example 1. You were a resident of Pakistan from October 1, 2020, through November 30, 2021. On December 1, 2021, you and your family returned to the United States to wait for an assignment to another foreign country. Your household goods were also returned to the United States.

Your foreign residence ended on November 30, 2021, and did not begin again until after you were assigned to another foreign country and physically entered that country. Since you weren't a bona fide resident of a foreign country for the entire tax year of 2020 or 2021, you don't meet the bona fide residence test in either year. You may, however, qualify for the foreign earned income exclusion or the housing exclusion or deduction discussed under [Physical Presence Test](#), later.

Example 2. Assume the same facts as in *Example 1*, except that upon completion of your assignment in Pakistan you were given a new assignment to Turkey. On December 1, 2021, you and your family returned to the United States for a month's vacation. On January 2,

2022, you arrived in Turkey for your new assignment. Because you didn't interrupt your bona fide residence abroad, you meet the bona fide residence test.

Physical Presence Test

You meet the physical presence test if you are physically present in a foreign country or countries for 330 full days during a period of 12 consecutive months. The 330 days don't have to be consecutive. Any U.S. citizen or resident alien can use the physical presence test to qualify for the exclusions and the deduction.

The physical presence test is based only on how long you stay in a foreign country or countries. This test doesn't depend on the kind of residence you establish, your intentions about returning, or the nature and purpose of your stay abroad.

330 full days. Generally, to meet the physical presence test, you must be physically present in a foreign country or countries for at least 330 full days during a 12-month period. You can count days you spent abroad for any reason. You don't have to be in a foreign country only for employment purposes. You can be on vacation.

You don't meet the physical presence test if illness, family problems, a vacation, or your employer's orders cause you to be present for less than the required amount of time.

Exception. You can be physically present in a foreign country or countries for less than 330 full days and still meet the physical presence test if you are required to leave a country because of war or civil unrest. See [Waiver of Time Requirements](#), later.

Full day. A full day is a period of 24 consecutive hours, beginning at midnight.

Travel. When you leave the United States to go directly to a foreign country or when you return directly to the United States from a foreign country, the time you spend on or over international waters doesn't count toward the 330-day total.

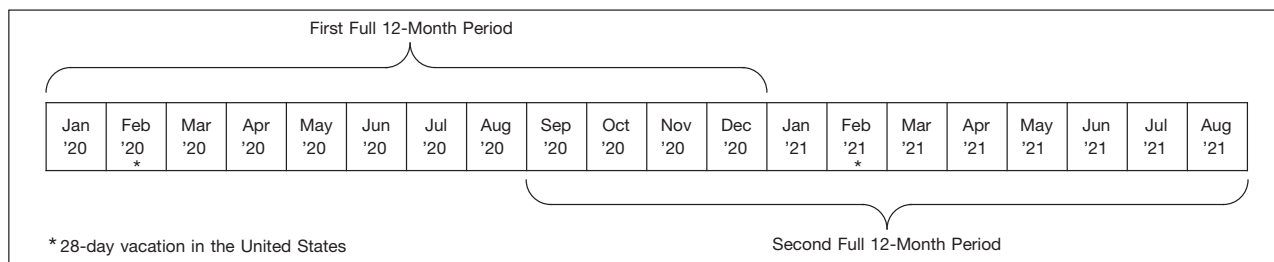
Example. You leave the United States for France by air on June 10. You arrive in France at 9:00 a.m. on June 11. Your first full day of physical presence in France is June 12.

Passing over foreign country. If, in traveling from the United States to a foreign country, you pass over a foreign country before midnight of the day you leave, the first day you can count toward the 330-day total is the day following the day you leave the United States.

Example. You leave the United States by air at 9:30 a.m. on June 10 to travel to Kenya. You pass over western Africa at 11:00 p.m. on June 10 and arrive in Kenya at 12:30 a.m. on June 11. Your first full day in a foreign country is June 11.

Change of location. You can move about from one place to another in a foreign country or to another foreign country without losing full days. If any part of your travel is not within any

Figure 4-B. How To Figure Overlapping 12-Month Periods
 This figure illustrates Example 2 under *How to figure the 12-month period*.



foreign country and takes less than 24 hours, you are considered to be in a foreign country during that part of travel.

Example 1. You leave Ireland by air at 11:00 p.m. on July 6 and arrive in Sweden at 3:00 a.m. on July 7. Your trip takes less than 24 hours and you lose no full days.

Example 2. You leave Norway by ship at 10:00 p.m. on July 6 and arrive in Portugal at 6:00 a.m. on July 8. Since your travel isn't within a foreign country or countries and the trip takes more than 24 hours, you lose as full days July 6, 7, and 8. If you remain in Portugal, your next full day in a foreign country is July 9.

In United States while in transit. If you are in transit between two points outside the United States and are physically present in the United States for less than 24 hours, you aren't treated as present in the United States during the transit. You are treated as traveling over areas not within any foreign country.

How to figure the 12-month period. There are four rules you should know when figuring the 12-month period.

- Your 12-month period can begin with any day of the month. It ends the day before the same calendar day, 12 months later.
- Your 12-month period must be made up of consecutive months. Any 12-month period can be used if the 330 days in a foreign country fall within that period.
- You don't have to begin your 12-month period with your first full day in a foreign country or end it with the day you leave. You can choose the 12-month period that gives you the greatest exclusion.
- In determining whether the 12-month period falls within a longer stay in the foreign country, 12-month periods can overlap one another.

Example 1. You are a construction worker who works on and off in a foreign country over a 20-month period. You might pick up the 330 full days in a 12-month period only during the middle months of the time you work in the foreign country because the first few and last few months of the 20-month period are broken up by long visits to the United States.

Example 2. You work in New Zealand for a 20-month period from January 1, 2020, through August 31, 2021, except that you spend 28 days in February 2020 and 28 days in February 2021 on vacation in the United States. You are present in New Zealand for at least 330 full days during each of the following two 12-month

periods: January 1, 2020 – December 31, 2020, and September 1, 2020 – August 31, 2021. By overlapping the 12-month periods in this way, you meet the physical presence test for the whole 20-month period. See [Figure 4-B](#).

Waiver of Time Requirements

Both the bona fide residence test and the physical presence test contain minimum time requirements. The minimum time requirements can be waived, however, if you must leave a foreign country because of war, civil unrest, or similar adverse conditions in that country. You must be able to show that you could have reasonably expected to meet the minimum time requirements if not for the adverse conditions. To qualify for the waiver, you must actually have your tax home in the foreign country and be a bona fide resident of, or be physically present in, the foreign country on or before the beginning date of the waiver.

Early in 2022, the IRS will publish in the Internal Revenue Bulletin a list of the only countries that qualify for the waiver for 2021 and the effective dates. If you left one of the countries on or after the date listed for each country, you can meet the bona fide residence test or physical presence test for 2021 without meeting the minimum time requirement. However, in figuring your exclusion, the number of your qualifying days of bona fide residence or physical presence includes only days of actual residence or presence within the country.

U.S. Travel Restrictions

If you are present in a foreign country in violation of U.S. law, you will not be treated as a bona fide resident of a foreign country or as physically present in a foreign country while you are in violation of the law. Income that you earn from sources within such a country for services performed during a period of violation does not qualify as foreign earned income. Your housing expenses within that country (or outside that country for housing your spouse or dependents) while you are in violation of the law cannot be included in figuring your foreign housing amount.

At the time this publication was released, the only country to which travel restrictions applied during 2021 was Cuba. However, individuals working at the U.S. Naval Base at Guantanamo Bay in Cuba are not in violation of U.S. law. Personal service income earned by individuals at the base is eligible for the foreign earned

income exclusion, provided the other requirements are met.

Foreign Earned Income

To claim the foreign earned income exclusion, the foreign housing exclusion, or the foreign housing deduction, you must have foreign earned income.

Foreign earned income is generally income you receive for services you perform during a period in which you meet both of the following requirements.

- Your tax home is in a foreign country.
- You meet either the bona fide residence test or the physical presence test.

To determine whether your tax home is in a foreign country, see [Tax Home in Foreign Country](#), earlier. To determine whether you meet either the bona fide residence test or the physical presence test, see [Bona Fide Residence Test](#) and [Physical Presence Test](#), earlier.

Foreign earned income does not include the following amounts.

- The value of meals and lodging that you exclude from your income because the meals and lodging were furnished for the convenience of your employer.
- Pension or annuity payments you receive, including social security benefits (see [Pensions and annuities](#), later).
- Pay you receive as an employee of the U.S. Government. (See [U.S. Government Employees](#), later.)
- Amounts you include in your income because of your employer's contributions to a nonexempt employee trust or to a nonqualified annuity contract.
- Payments you receive after the end of the tax year following the tax year in which you performed the services that earned the income.

Earned income. This is pay for personal services performed, such as wages, salaries, or professional fees. The list that follows classifies many types of income into three categories. The column headed *Variable Income* lists income that may fall into either the earned income category, the unearned income category, or partly into both. For more information on earned and unearned income, see [Earned and Unearned Income](#), later.

Earned Income	Unearned Income	Variable Income
Salaries and wages	Dividends	Business profits
Commissions	Interest	Royalties
Bonuses	Capital gains	Rents
Professional fees	Gambling winnings	Scholarships and fellowships
Tips	Alimony	
	Social security benefits	
	Pensions	
	Annuities	

In addition to the types of earned income listed, certain noncash income and allowances or reimbursements are considered earned income.

Noncash income. The fair market value of property or facilities provided to you by your employer in the form of lodging, meals, or use of a car is earned income.

Allowances or reimbursements. Earned income includes allowances or reimbursements you receive, such as the following amounts.

- Cost-of-living allowances.
- Overseas differential.
- Family allowance.
- Reimbursement for education or education allowance.
- Home leave allowance.
- Quarters allowance.
- Reimbursement for moving or moving allowance (unless excluded from income as discussed later in [Reimbursement of employee expenses](#) under *Earned and Unearned Income*).

Source of Earned Income

The source of your earned income is the place where you perform the services for which you received the income. Foreign earned income is income you receive for working in a foreign country. Where or how you are paid has no effect on the source of the income. For example, income you receive for work done in Austria is income from a foreign source even if the income is paid directly to your bank account in the United States and your employer is located in New York City.

Example. You are a U.S. citizen, a bona fide resident of Canada, and working as a mining engineer. Your salary is \$76,800 per year. You also receive a \$6,000 cost-of-living allowance, and a \$6,000 education allowance. Your employment contract did not indicate that you were entitled to these allowances only while outside the United States. Your total income is \$88,800. You work a 5-day week, Monday through Friday. After subtracting your vacation, you have a total of 240 workdays in the year. You worked in the United States during the year for 6 weeks (30 workdays). The following shows how to figure the part of your income that is for work done in Canada during the year.

Number of days worked in Canada during the year (210)

$$\frac{\text{Number of days of work during the year for which payment was made (240)}}{\text{Number of days worked in Canada during the year (210)}} \times \text{Total income } (\$88,800) = \$77,700$$

Your foreign source earned income is \$77,700.

Earned and Unearned Income

Earned income was defined earlier as pay for personal services performed. Some types of income are not easily identified as earned or unearned income. Some of these types of income are further explained here.

Income from a sole proprietorship or partnership. Income from a business in which capital investment is an important part of producing the income may be unearned income. If you are a sole proprietor or partner and your personal services are also an important part of producing the income, the part of the income that represents the value of your personal services will be treated as earned income.

Capital a factor. If capital investment is an important part of producing income, no more than 30% of your share of the net profits of the business is earned income.

If you have no net profits, the part of your gross profit that represents a reasonable allowance for personal services actually performed is considered earned income. Because you do not have a net profit, the 30% limit does not apply.

Example 1. You are a U.S. citizen and meet the bona fide residence test. You invest in a partnership based in Cameroon that is engaged solely in selling merchandise outside the United States. You perform no services for the partnership. At the end of the tax year, your share of the net profits is \$80,000. The entire \$80,000 is unearned income.

Example 2. Assume that in *Example 1* you spend time operating the business. Your share of the net profits is \$80,000; 30% of your share of the profits is \$24,000. If the value of your services for the year is \$15,000, your earned income is limited to the value of your services, \$15,000.

Capital not a factor. If capital is not an income-producing factor and personal services produce the business income, the 30% rule does not apply. The entire amount of business income is earned income.

Example. You and Lou Green are management consultants and operate as equal partners in performing services outside the United

States. Because capital is not an income-producing factor, all the income from the partnership is considered earned income.

Income from a corporation. The salary you receive from a corporation is earned income only if it represents a reasonable allowance as compensation for work you do for the corporation. Any amount over what is considered a reasonable salary is unearned income.

Example 1. You are a U.S. citizen and an officer and stockholder of a corporation in Honduras. You perform no work or service of any kind for the corporation. During the tax year, you receive a \$10,000 "salary" from the corporation. The \$10,000 clearly is not for personal services and is unearned income.

Example 2. You are a U.S. citizen and work full time as secretary-treasurer of your corporation. During the tax year, you receive \$100,000 as salary from the corporation. If \$80,000 is a reasonable allowance as pay for the work you did, then \$80,000 is earned income.

Stock options. You may have earned income if you disposed of stock that you got by exercising a stock option granted to you under an employee stock purchase plan.

If your gain on the disposition of stock you got by exercising an option is treated as capital gain, your gain is unearned income.

However, if you disposed of the stock less than 2 years after you were granted the option or less than 1 year after you got the stock, part of the gain on the disposition may be earned income. It is considered received in the year you disposed of the stock and earned in the year you performed the services for which you were granted the option. Any part of the earned income that is due to work you did outside the United States is foreign earned income.

See [Pub. 525](#), Taxable and Nontaxable Income, for a discussion of the treatment of stock options.

Pensions and annuities. For purposes of the foreign earned income exclusion, the foreign housing exclusion, and the foreign housing deduction, amounts received as pensions or annuities are unearned income.

Royalties. Royalties from the leasing of oil and mineral lands and patents are generally a form of rent or dividends and are unearned income.

Royalties received by a writer are earned income if they are received:

- For the transfer of property rights of the writer in the writer's product, or
- Under a contract to write a book or series of articles.

Rental income. Generally, rental income is unearned income. If you perform personal services in connection with the production of rent, up to 30% of your net rental income can be considered earned income.

Example. Larry Smith, a U.S. citizen living in Australia, owns and operates a rooming house in Sydney. If he is operating the rooming house as a business that requires capital and

personal services, he can consider up to 30% of net rental income as earned income. On the other hand, if he just owns the rooming house and performs no personal services connected with its operation, except perhaps making minor repairs and collecting rents, none of his net income from the house is considered earned income. It is all unearned income.

Professional fees. If you are engaged in a professional occupation (such as a doctor or lawyer), all fees received in the performance of these services are earned income.

Income of an artist. Income you receive from the sale of paintings you created is earned income.

Scholarships and fellowships. Any portion of a scholarship or fellowship grant that is paid to you for teaching, research, or other services is considered earned income if you must include it in your gross income. If the payer of the grant is required to provide you with a Form W-2, these amounts will be listed as wages.



Certain scholarship and fellowship income may be exempt under other provisions. For more information, see [Pub. 970](#).

Use of employer's property or facilities. If you receive fringe benefits in the form of the right to use your employer's property or facilities, the fair market value of that right is earned income. Fair market value is the price at which the property would change hands between a willing buyer and a willing seller, neither being required to buy or sell, and both having reasonable knowledge of all the necessary facts.

Example. You are privately employed and live in Japan all year. You are paid a salary of \$6,000 a month. You live rent-free in a house provided by your employer that has a fair rental value of \$3,000 a month. The house is not provided for your employer's convenience. You report on the calendar-year, cash basis. You received \$72,000 salary from foreign sources plus \$36,000 fair rental value of the house, or a total of \$108,000 of earned income.

Reimbursement of employee expenses. If you are reimbursed under an [accountable plan](#) (defined below) for expenses you incur on your employer's behalf and you have adequately accounted to your employer for the expenses, do not include the reimbursement for those expenses in your earned income.

The expenses for which you are reimbursed are not considered allocable (related) to your earned income. If expenses and reimbursement are equal, there is nothing to allocate to excluded income. If expenses are more than the reimbursement, the unreimbursed expenses are considered to have been incurred in producing earned income and must be divided between your excluded and included income. (See [chapter 5](#).) If the reimbursement is more than the expenses, no expenses remain to be divided between excluded and included income and the excess reimbursement must be included in earned income.

These rules do not apply to the following individuals.

- Straight-commission salespersons.
- Employees who have arrangements with their employers under which taxes are not withheld on a percentage of the commissions because the employers consider that percentage to be attributable to the employees' expenses.

Accountable plan. An accountable plan is a reimbursement or allowance arrangement that includes all three of the following rules.

- The expenses covered under the plan must have a business connection.
- The employee must adequately account to the employer for these expenses within a reasonable period of time.
- The employee must return any excess reimbursement or allowance within a reasonable period of time.

Reimbursement of moving expenses. For tax years beginning after 2017, you can no longer deduct moving expenses. If you received a reimbursement of moving expenses, please note that in most cases, reimbursement of moving expenses will be earned income. This section discusses reimbursements that must be included in earned income.

The rules for determining when the reimbursement is considered earned or where the reimbursement is considered earned may differ somewhat from the general rules previously discussed.

Although you receive the reimbursement in one tax year, it may be considered earned for services performed, or to be performed, in another tax year. You must report the reimbursement as income on your return in the year you receive it, even if it is considered earned during a different year.



Moving expenses are only deductible for members of the U.S. Armed Forces who move pursuant to a military order and incident to a permanent change of station. Therefore, the exclusion from earned income for qualified moving expenses is, generally, only available to members of the U.S. Armed Forces.

Move from United States to foreign country. If you move from the United States to a foreign country, your moving expense reimbursement is generally considered pay for future services to be performed at the new location. The reimbursement is considered earned solely in the year of the move if you qualify for the exclusion for a period that includes at least 120 days during that tax year.

If you are neither a bona fide resident of nor physically present in a foreign country or countries for a period that includes 120 days during the year of the move, a portion of the reimbursement is considered earned in the year of the move and a portion is considered earned in the year following the year of the move. To figure the amount earned in the year of the move, multiply the reimbursement by a fraction. The numerator (top number) is the number of days in your qualifying period that fall within the year of the move, and the denominator (bottom number) is the total number of days in the year of the move.

The difference between the total reimbursement and the amount considered earned in the year of the move is the amount considered earned in the year following the year of the move. The part earned in each year is figured as shown in the following example.

Example. You are a U.S. citizen working in the United States. You were told in October 2020 that you were being transferred to a foreign country. You arrived in the foreign country on December 15, 2020, and you are a bona fide resident for the remainder of 2020 and all of 2021. Your employer reimbursed you \$2,000 in January 2021 for your moving expense. Because you did not qualify for the exclusion under the bona fide residence test for at least 120 days in 2020 (the year of the move), the reimbursement is considered pay for services performed in the foreign country for both 2020 and 2021.

You figure the part of the reimbursement for services performed in the foreign country in 2020 by multiplying the total reimbursement by a fraction. The fraction is the number of days during which you were a bona fide resident in 2020 (the year of the move) divided by 366. The remaining part of the reimbursement is for services performed in the foreign country in 2021.

This computation is used only to determine when the reimbursement is considered earned. You would include the amount of the reimbursement in income in 2021, the year you received it.

Move between foreign countries. If you move between foreign countries, any moving expense reimbursement that you must include in income will be considered earned in the year of the move if you qualify for the foreign earned income exclusion for a period that includes at least 120 days in the year of the move.

Move to United States. If you move to the United States, the moving expense reimbursement that you must include in income is generally considered to be U.S. source income.

However, if under either an agreement between you and your employer or a statement of company policy that is reduced to writing before your move to the foreign country, your employer will reimburse you for your move back to the United States regardless of whether you continue to work for the employer, the includible reimbursement is considered compensation for past services performed in the foreign country. The includible reimbursement is considered earned in the year of the move if you qualify for the foreign earned income exclusion for a period that includes at least 120 days during that year. Otherwise, you treat the includible reimbursement as received for services performed in the foreign country in the year of the move and the year immediately before the year of the move.

See the discussion under [Move from United States to foreign country](#), earlier, to figure the amount of the includible reimbursement considered earned in the year of the move. The amount earned in the year before the year of the move is the difference between the total includible reimbursement and the amount earned in the year of the move.

Example. You are a U.S. citizen employed in a foreign country. You retired from employment with your employer on March 31, 2021, and returned to the United States on the same day, after having been a bona fide resident of the foreign country for several years. A written agreement with your employer entered into before you went abroad provided that you would be reimbursed for your move back to the United States.

In April 2021, your former employer reimbursed you \$4,000 for the cost of your move back to the United States. Because you were not a bona fide resident of a foreign country or countries for a period that included at least 120 days in 2021 (the year of the move), the includible reimbursement is considered pay for services performed in the foreign country for both 2021 and 2020.

You figure the part of the moving expense reimbursement for services performed in the foreign country for 2021 by multiplying the total includible reimbursement by a fraction. The fraction is the number of days of foreign residence during the year (90) (January 1 to March 31, 2021, equals 90 days) divided by the number of days in the year (365). The remaining part of the includible reimbursement is for services performed in the foreign country in 2020. You report the amount of the includible reimbursement in 2021, the year you received it.



In this example, if you met the physical presence test for a period that included at least 120 days in 2021, the moving expense reimbursement would be considered earned entirely in the year of the move.

Storage expense reimbursements. If you are reimbursed for storage expenses, the reimbursement is for services you perform during the period of time for which the storage expenses are incurred.

U.S. Government Employees

For purposes of the foreign earned income exclusion, the foreign housing exclusion, and the foreign housing deduction, foreign earned income does not include any amounts paid by the United States or any of its agencies to its employees. This includes amounts paid from both appropriated and nonappropriated funds.

The following organizations (and other organizations similarly organized and operated under U.S. Army, Navy, or Air Force regulations) are integral parts of the Armed Forces, agencies, or instrumentalities of the United States.

- U.S. Armed Forces exchanges.
- Commissioned and noncommissioned officers' messes.
- Armed Forces motion picture services.
- Kindergartens on foreign Armed Forces installations.

Amounts paid by the United States or its agencies to persons who aren't their employees may qualify for exclusion or deduction.

If you are a U.S. Government employee paid by a U.S. agency that assigned you to a foreign government to perform specific services for

which the agency is reimbursed by the foreign government, your pay is from the U.S. Government and doesn't qualify for exclusion or deduction.

If you have questions about whether you are an employee or an independent contractor, get [Pub. 15-A](#).

American Institute in Taiwan. Amounts paid by the American Institute in Taiwan aren't foreign earned income for purposes of the foreign earned income exclusion, the foreign housing exclusion, or the foreign housing deduction. If you are an employee of the American Institute in Taiwan, allowances you receive are exempt from U.S. tax up to the amount that equals tax-exempt allowances received by civilian employees of the U.S. Government.

Allowances. Cost-of-living and foreign-area allowances paid under certain acts of Congress to U.S. civilian officers and employees stationed in Alaska and Hawaii or elsewhere outside the 48 contiguous states and the District of Columbia can be excluded from gross income. Post differentials are wages that must be included in gross income, regardless of the act of Congress under which they are paid.

More information. [Pub. 516](#) has more information for U.S. Government employees abroad.

Exclusion of Meals and Lodging

You don't include in your income the value of meals and lodging provided to you and your family by your employer at no charge if the following conditions are met.

1. The meals are furnished:
 - a. On the business premises of your employer, and
 - b. For the convenience of your employer.
2. The lodging is furnished:
 - a. On the business premises of your employer,
 - b. For the convenience of your employer, and
 - c. As a condition of your employment.

If these conditions are met, don't include the value of the meals or lodging in your income, even if a law or your employment contract says that they are provided as compensation.

Amounts you don't include in income because of these rules aren't foreign earned income.

If you receive a Form W-2, excludable amounts shouldn't be included in the total reported in box 1 as wages.

Family. Your family, for this purpose, includes only your spouse and your dependents.

Lodging. The value of lodging includes the cost of heat, electricity, gas, water, sewer serv-

ice, and similar items needed to make the lodging fit to live in.

Business premises of employer. Generally, the business premises of your employer is wherever you work. For example, if you work as a housekeeper, meals and lodging provided in your employer's home are provided on the business premises of your employer. Similarly, meals provided to cowhands while herding cattle on land leased or owned by their employer are considered provided on the premises of their employer.

Convenience of employer. Whether meals or lodging are provided for your employer's convenience must be determined from all the facts and circumstances. Meals furnished at no charge are considered provided for your employer's convenience if there is a good business reason for providing them, other than to give you more pay.

On the other hand, if your employer provides meals to you or your family as a means of giving you more pay, and there is no other business reason for providing them, their value is extra income to you because they aren't furnished for the convenience of your employer.

Condition of employment. Lodging is provided as a condition of employment if you must accept the lodging to properly carry out the duties of your job. You must accept lodging to properly carry out your duties if, for example, you must be available for duty at all times or you could not perform your duties if the lodging wasn't furnished.

Foreign camps. If the lodging is in a camp located in a foreign country, the camp is considered part of your employer's business premises. The camp must be:

- Provided for your employer's convenience because the place where you work is in a remote area where satisfactory housing isn't available to you on the open market within a reasonable commuting distance,
- Located as close as reasonably possible in the area where you work, and
- Provided in a common area or enclave that isn't available to the general public for lodging or accommodations and that normally houses at least 10 employees.

Foreign Earned Income Exclusion

If your tax home is in a foreign country and you meet the bona fide residence test or the physical presence test, you can choose to exclude from your income a limited amount of your foreign earned income. [Foreign earned income](#) was defined earlier in this chapter.

You can also choose to exclude from your income a foreign housing amount. This is explained later under [Foreign Housing Exclusion](#). If you choose to exclude a foreign housing amount, you must figure the foreign housing exclusion before you figure the foreign earned income exclusion. Your foreign earned income

exclusion is limited to your foreign earned income minus your foreign housing exclusion.

If you choose to exclude foreign earned income, you cannot deduct, exclude, or claim a credit for any item that can be allocated to or charged against the excluded amounts. This includes any expenses, losses, and other normally deductible items allocable to the excluded income. For more information about deductions and credits, see [chapter 5](#).

Limit on Excludable Amount

You may be able to exclude up to \$108,700 of your foreign earned income in 2021.

You cannot exclude more than the smaller of:

- \$108,700, or
- Your [foreign earned income](#) (discussed earlier) for the tax year minus your [foreign housing exclusion](#) (discussed later).

If both you and your spouse work abroad and each of you meets either the bona fide residence test or the physical presence test, you can each choose the foreign earned income exclusion. You both don't need to meet the same test. Together, you and your spouse can exclude as much as \$217,400.

Paid in year following work. Generally, you are considered to have earned income in the year in which you do the work for which you receive the income, even if you work in one year but are not paid until the following year. If you report your income on a cash basis, you report the income on your return for the year you receive it. If you work one year, but are not paid for that work until the next year, the amount you can exclude in the year you are paid is the amount you could have excluded in the year you did the work if you had been paid in that year. For an exception to this general rule, see [Year-end payroll period](#), later.

Example. You were a bona fide resident of Brazil for all of 2020 and 2021. You report your income on the cash basis. In 2020, you were paid \$87,900 for work you did in Brazil during that year. You excluded all of the \$87,900 from your income in 2020.

In 2021, you were paid \$121,000 for your work in Brazil. \$20,500 was for work you did in 2020 and \$100,500 was for work you did in 2021. You can exclude \$19,700 of the \$20,500 from your income in 2021. This is the \$107,600 maximum exclusion in 2020 minus the \$87,900 actually excluded that year. You must include the remaining \$800 in income in 2021 because you could not have excluded that income in 2020 if you had received it that year. You can exclude all of the \$100,500 you were paid for work you did in 2021 from your 2021 income.

Your total foreign earned income exclusion for 2021 is \$121,200 (\$19,700 for work you did in 2020 and \$100,500 for work you did in 2021). You would include in your 2021 income \$800 for the work you did in 2020.

Year-end payroll period. There is an exception to the general rule that income is considered earned in the year you do the work for which you receive the income. If you are a

cash-basis taxpayer, any salary or wage payment you receive after the end of the year in which you do the work for which you receive the pay is considered earned entirely in the year you receive it if all four of the following apply.

- The period for which the payment is made is a normal payroll period of your employer that regularly applies to you.
- The payroll period includes the last day of your tax year (December 31 if you figure your taxes on a calendar-year basis).
- The payroll period is not longer than 16 days.
- The payday comes at the same time in relation to the payroll period that it would normally come and it comes before the end of the next payroll period.

Example. You are paid twice a month. For the normal payroll period that begins on the 1st of the month and ends on the 15th of the month, you are paid on the 16th day of the month. For the normal payroll period that begins on the 16th of the month and ends on the last day of the month, you are paid on the 1st day of the following month. Because all of the above conditions are met, the pay you received on January 1, 2021, is considered earned in 2021.

Income earned over more than 1 year. Regardless of when you actually receive income, you must apply it to the year in which you earned it in figuring your excludable amount for that year. For example, a bonus may be based on work you did over several years. You determine the amount of the bonus that is considered earned in a particular year in two steps.

1. Divide the bonus by the number of calendar months in the period when you did the work that resulted in the bonus.
2. Multiply the result of (1) by the number of months you did the work during the year. This is the amount that is subject to the exclusion limit for that tax year.

Income received more than 1 year after it was earned. You can't exclude income you receive after the end of the year following the year you do the work to earn it.

Example. You were a bona fide resident of Sweden for 2019, 2020, and 2021. You report your income on the cash basis. In 2019, you were paid \$69,000 for work you did in Sweden that year, and in 2020, you were paid \$74,000 for that year's work in Sweden. You excluded all the income on your 2019 and 2020 returns.

In 2021, you were paid \$92,000; \$82,000 for your work in Sweden during 2021, and \$10,000 for work you did in Sweden in 2019. You cannot exclude any of the \$10,000 for work done in 2019 because you received it after the end of the year following the year in which you earned it. You must include the \$10,000 in income. You can exclude all of the \$82,000 received for work you did in 2021.

Community income. The maximum exclusion applies separately to the earnings of spouses. Ignore any community property laws when you figure your limit on the foreign earned income exclusion.

Part-year exclusion. If the period for which you qualify for the foreign earned income exclusion includes only part of the year, you must adjust the maximum limit based on the number of qualifying days in the year. The number of qualifying days is the number of days in the year within the period on which you both:

- Have your tax home in a foreign country, and
- Meet either the bona fide residence test or the physical presence test.

For this purpose, you can count as qualifying days all days within a period of 12 consecutive months once you are physically present and have your tax home in a foreign country for 330 full days. To figure your maximum exclusion, multiply the maximum excludable amount for the year by the number of your qualifying days in the year, and then divide the result by the number of days in the year.

Example. You report your income on the calendar-year basis and you qualified for the foreign earned income exclusion under the bona fide residence test for 75 days in 2021. You can exclude a maximum of 75/365 of \$108,700, or \$22,366, of your foreign earned income for 2021. If you qualify under the bona fide residence test for all of 2022, you can exclude your foreign earned income up to the 2022 limit.

Physical presence test. Under the physical presence test, a 12-month period can be any period of 12 consecutive months that includes 330 full days. If you qualify for the foreign earned income exclusion under the physical presence test for part of a year, it is important to carefully choose the 12-month period that will allow the maximum exclusion for that year.

Note. See [How to figure the 12-month period](#) under *Physical Presence Test*, earlier, for the rules on figuring the 12-month period.

Example. You are physically present and have your tax home in a foreign country for a 16-month period from June 1, 2020, through September 30, 2021, except for 16 days in December 2020 when you were on vacation in the United States. You figure the maximum exclusion for 2020 as follows.

1. Beginning with June 1, 2020, count forward 330 full days. Do not count the 16 days you spent in the United States. The 330th day, May 12, 2021, is the last day of a 12-month period.
2. Count backward 12 months from May 12, 2021, to find the first day of this 12-month period, May 13, 2020. This 12-month period runs from May 13, 2020, through May 12, 2021.
3. Count the total days during 2020 that fall within this 12-month period. This is 233 days (May 13, 2020 – December 31, 2020).
4. Multiply \$107,600 (the maximum exclusion for 2020) by the fraction 233/366 to find your maximum exclusion for 2020 (\$68,499).

You figure the maximum exclusion for 2021 in the opposite manner.

1. Beginning with your last full day, September 30, 2021, count backward 330 full days. Do not count the 16 days you spent in the United States. That day, October 19, 2020, is the first day of a 12-month period.
2. Count forward 12 months from October 19, 2020, to find the last day of this 12-month period, October 18, 2021. This 12-month period runs from October 19, 2020, through October 18, 2021.
3. Count the total days during 2021 that fall within this 12-month period. This is 291 days (January 1, 2021 – October 18, 2021).
4. Multiply \$108,700, the maximum limit, by the fraction 291/365 to find your maximum exclusion for 2021 (\$86,662).

Choosing the Exclusion

The foreign earned income exclusion is voluntary. You can choose the exclusion by completing the appropriate parts of Form 2555.

When You Can Choose the Exclusion

Your initial choice of the exclusion on Form 2555 must generally be made with one of the following returns.

- A return filed by the due date (including any extensions).
- A return amending a timely filed return. Amended returns must generally be filed by the later of 3 years after the filing date of the original return or 2 years after the tax is paid.
- A return filed within 1 year from the original due date of the return (determined without regard to any extensions).

Filing after the above periods. You can choose the exclusion on a return filed after the periods described above if you owe no federal income tax after taking into account the exclusion. If you owe federal income tax after taking into account the exclusion, you can choose the exclusion on a return filed after the periods described earlier if you file before the IRS discovers that you failed to choose the exclusion. Whether or not you owe federal income tax after taking the exclusion into account, if you file your return after the periods described earlier, you must type or legibly print at the top of the first page of the Form 1040 or 1040-SR, "Filed pursuant to section 1.911-7(a)(2)(i)(D)."

If you owe federal income tax after taking into account the foreign earned income exclusion and the IRS discovered that you failed to choose the exclusion, you may still be able to choose the exclusion. You must request a private letter ruling under Regulations section 301.9100-3 and Revenue Procedure 2021-1, 2021-01 I.R.B. 1, available at [IRS.gov/irb/2021-01_IRB#REV-PROC-2021-1](https://www.irs.gov/irb/2021-01_IRB#REV-PROC-2021-1).

Effect of Choosing the Exclusion

Once you choose to exclude your foreign earned income, that choice remains in effect for that year and all later years unless you revoke it.

Foreign tax credit or deduction. Once you choose to exclude foreign earned income, you can't take a foreign tax credit or deduction for taxes on income you can exclude. If you do take a credit or deduction for any of those taxes in a later year, your election for the foreign earned income exclusion will be revoked beginning with that year. See [Pub. 514](https://www.irs.gov/irb/2021-01_IRB#REV-PROC-2021-1) for more information.

Additional child tax credit. You can't take the additional child tax credit if you claim the foreign earned income exclusion.

Earned income credit. If you claim the foreign earned income exclusion, you don't qualify for the earned income credit for the year. For more information on this credit, see [Pub. 596](https://www.irs.gov/irb/2021-01_IRB#REV-PROC-2021-1).

Figuring tax on income not excluded. If you claim the [foreign earned income exclusion](https://www.irs.gov/irb/2021-01_IRB#REV-PROC-2021-1), the [housing exclusion](https://www.irs.gov/irb/2021-01_IRB#REV-PROC-2021-1) (discussed later), or both, you must figure the tax on your nonexcluded income using the tax rates that would have applied had you not claimed the exclusions. See the [Instructions for Form 1040](https://www.irs.gov/irb/2021-01_IRB#REV-PROC-2021-1) and complete the Foreign Earned Income Tax Worksheet to figure the amount of tax to enter on Form 1040 or 1040-SR, line 16. If you must attach [Form 6251](https://www.irs.gov/irb/2021-01_IRB#REV-PROC-2021-1) to your return, use the Foreign Earned Income Tax Worksheet provided in the [Instructions for Form 6251](https://www.irs.gov/irb/2021-01_IRB#REV-PROC-2021-1).

Revoking the Exclusion

You can revoke your choice for any year. You do this by attaching a statement that you are revoking one or more previously made choices to the return or amended return for the first year that you do not wish to claim the exclusion(s). You must specify which choice(s) you are revoking. You must revoke separately a choice to exclude foreign earned income and a choice to exclude foreign housing amounts.

If you revoked a choice and within 5 years again wish to choose the same exclusion, you must apply for IRS approval. You do this by requesting a ruling from the IRS.



Mail your request for a ruling, in duplicate, to:

Associate Chief Counsel (International)
Internal Revenue Service
Attn: CC:PA:LPD:TSS
P.O. Box 7604
Ben Franklin Station
Washington, DC 20044



If a private delivery service is used, the address is:

Associate Chief Counsel (International)
Internal Revenue Service
Attn: CC:PA:LPD:TSS, Room 5336
1111 Constitution Ave. NW
Washington, DC 20224

Because requesting a ruling can be complex, you may need professional help. Also, the IRS charges a fee for issuing these rulings. For more information, see [IRS.gov/irb/2021-01_IRB#REV-PROC-2021-1](https://www.irs.gov/irb/2021-01_IRB#REV-PROC-2021-1).

In deciding whether to give approval, the IRS will consider any facts and circumstances that may be relevant. These may include a period of residence in the United States, a move from one foreign country to another foreign country with different tax rates, a substantial change in the tax laws of the foreign country of residence or physical presence, and a change of employer.

Foreign Housing Exclusion and Deduction

In addition to the foreign earned income exclusion, you can also claim an exclusion or a deduction from gross income for your housing amount if your tax home is in a foreign country and you qualify for the exclusions and deduction under either the bona fide residence test or the physical presence test.

The housing exclusion applies only to amounts considered paid for with employer-provided amounts. The housing deduction applies only to amounts paid for with self-employment earnings.

If you are married and you and your spouse each qualifies under one of the tests, see [Married Couples](https://www.irs.gov/irb/2021-01_IRB#REV-PROC-2021-1), later.

Housing Amount

Your housing amount is the total of your housing expenses for the year minus the base housing amount.

Base housing amount. The computation of the base housing amount (line 32 of [Form 2555](https://www.irs.gov/irb/2021-01_IRB#REV-PROC-2021-1)) is tied to the maximum foreign earned income exclusion. The amount is 16% of the exclusion amount (computed on a daily basis), multiplied by the number of days in your qualifying period that fall within your tax year.

For 2021, the maximum foreign earned income exclusion is \$108,700 per year; 16% of this amount is \$17,392, or \$47.64 per day. To figure your base housing amount if you are a calendar year taxpayer, multiply \$47.64 by the number of your qualifying days during 2021. (See [Part-year exclusion](https://www.irs.gov/irb/2021-01_IRB#REV-PROC-2021-1) under *Limit on Excludable Amount*, earlier.) Subtract the result from your total housing expenses (up to the applicable limit) to find your housing amount.

Example. Your qualifying period includes all of 2021. During the year, you spent \$19,124 for your housing. This is below the limit for the location in which you incurred the expenses. Your housing amount is \$19,124 minus \$17,392, or \$1,732.

U.S. Government allowance. You must reduce your housing amount by any U.S. Government allowance or similar nontaxable allowance intended to compensate you or your spouse for the expenses of housing during the period for which you claim a foreign housing exclusion or deduction.

Housing expenses. Housing expenses include your reasonable expenses paid or incurred for housing in a foreign country for you and (if they live with you) for your spouse and dependents.

Consider only housing expenses for the part of the year that you qualify for the foreign earned income exclusion.

Housing expenses include:

- Rent,
- The fair rental value of housing provided in kind by your employer,
- Repairs,
- Utilities (other than telephone charges),
- Real and personal property insurance,
- Nondeductible occupancy taxes,
- Nonrefundable fees for securing a leasehold,
- Rental of furniture and accessories, and
- Residential parking.

Housing expenses do not include:

- Expenses that are lavish or extravagant under the circumstances;
- Deductible interest and taxes (including deductible interest and taxes of a tenant-stockholder in a cooperative housing corporation);
- The cost of buying property, including principal payments on a mortgage;
- The cost of domestic labor (maids, gardeners, etc.);
- Pay television subscriptions;
- Improvements and other expenses that increase the value or appreciably prolong the life of property;
- Purchased furniture or accessories; or
- Depreciation or amortization of property or improvements.



No double benefit. You can't include in housing expenses the value of meals or lodging that you exclude from gross income (see [Exclusion of Meals and Lodging, earlier](#)).

Limit on housing expenses. The amount of qualified housing expenses eligible for the housing exclusion and housing deduction is limited. The limit is generally 30% of the maximum foreign earned income exclusion (computed on a daily basis), multiplied by the number of days in your qualifying period that fall within your tax year. For 2021, this is generally \$89.34 per day (\$32,610 per year). However, the limit will vary depending upon the location of your foreign tax home.

A qualified individual incurring housing expenses in a high-cost locality during 2021 can use housing expenses that total more than the

standard limit on housing expenses (\$32,610) to determine the housing amount. An individual who does not incur housing expenses in a high-cost locality is limited to maximum housing expenses of \$89.34 per day (\$32,610 per year).

The limits for high-cost localities are listed in the [Instructions for Form 2555](#).



You can elect to apply the 2021 housing cost limits to figure your 2020 housing exclusion instead of using the 2020 limits. The IRS and Treasury anticipate that you will be able to elect to apply the 2022 limits to figure your 2021 housing exclusion instead of using the 2021 limits.

Second foreign household. Ordinarily, if you maintain two foreign households, your reasonable foreign housing expenses include only costs for the household that bears the closer relationship (not necessarily geographic) to your tax home. However, if you maintain a second, separate household outside the United States for your spouse or dependents because living conditions near your tax home are dangerous, unhealthful, or otherwise adverse, include the expenses for the second household in your reasonable foreign housing expenses. You can't include expenses for more than one second foreign household at the same time.

If you maintain two households and you exclude the value of one because it is provided by your employer, you can still include the expenses for the second household in figuring a foreign housing exclusion or deduction.

Adverse living conditions include:

- A state of warfare or civil insurrection in the general area of your tax home, and
- Conditions under which it is not feasible to provide family housing (for example, if you must live on a construction site or drilling rig).

Foreign Housing Exclusion

If you do not have self-employment income, all of your earnings are employer-provided amounts and your entire housing amount is considered paid for with those employer-provided amounts. This means that you can exclude (up to the limits) your entire housing amount.

Employer-provided amounts. These include any amounts paid to you or paid or incurred on your behalf by your employer that are taxable foreign earned income (without regard to the foreign earned income exclusion) to you for the year. Employer-provided amounts include:

- Your salary,
- Any reimbursement for housing expenses,
- Amounts your employer pays to a third party on your behalf,
- The fair rental value of company-owned housing furnished to you unless that value is excluded under the rules explained earlier under [Exclusion of Meals and Lodging](#),
- Amounts paid to you by your employer as part of a tax equalization plan, and
- Amounts paid to you or a third party by your employer for the education of your dependents.

Choosing the exclusion. You can choose the housing exclusion by completing the appro-

priate parts of Form 2555. Rules about choosing the exclusion under [Foreign Earned Income Exclusion](#), earlier, also apply to the foreign housing exclusion.

Your housing exclusion is the lesser of:

- That part of your housing amount paid for with employer-provided amounts, or
- Your foreign earned income.

If you choose the housing exclusion, you must figure it before figuring your foreign earned income exclusion. You cannot claim less than the full amount of the housing exclusion to which you are entitled.

Figuring tax on income not excluded. If you claim the housing exclusion, the [foreign earned income exclusion](#) (discussed earlier), or both, you must figure the tax on your nonexcluded income using the tax rates that would have applied had you not claimed the exclusions. See the [Instructions for Form 1040](#) and complete the Foreign Earned Income Tax Worksheet to figure the amount of tax to enter on Form 1040 or 1040-SR, line 16. If you must attach Form 6251 to your return, use the Foreign Earned Income Tax Worksheet provided in the Instructions for Form 6251.

Foreign tax credit or deduction. Once you choose to exclude foreign housing amounts, you can't take a foreign tax credit or deduction for taxes on income you can exclude. If you do take a credit or deduction for any of those taxes, your choice to exclude housing amounts may be considered revoked. See [Pub. 514](#) for more information.

Additional child tax credit. You can't take the additional child tax credit if you claim the foreign housing exclusion.

Earned income credit. If you claim the foreign housing exclusion, you don't qualify for the earned income credit for the year.

Foreign Housing Deduction

If you don't have self-employment income, you can't take a foreign housing deduction.

How you figure your housing deduction depends on whether you have only self-employment income or both self-employment income and employer-provided income. In either case, the amount you can deduct is subject to the limit described later.

Self-employed—no employer-provided amounts. If none of your housing amount is considered paid for with employer-provided amounts, such as when all of your income is from self-employment, you can deduct your housing amount, subject to the limit described later.

Take the deduction by including it on line 24j of Schedule 1 (Form 1040).

Self-employed and employer-provided amounts. If you are both an employee and a self-employed individual during the year, you can deduct part of your housing amount and exclude part of it. To find the part that you can exclude, multiply your housing amount by the [employer-provided amounts](#) (discussed earlier)

and then divide the result by your foreign earned income. This is the amount you can use to figure your foreign housing exclusion. You can deduct the balance of the housing amount, subject to the limit described later.

Example. Your housing amount for the year is \$18,000. During the year, your total foreign earned income is \$100,000, of which half (\$50,000) is from self-employment and half is from your services as an employee. Half of your housing amount ($\$18,000 \div 2$) is considered provided by your employer. You can exclude \$9,000 as a housing exclusion. You can deduct the remaining \$9,000 as a housing deduction subject to the following limit.

Limit

Your housing deduction cannot be more than your foreign earned income minus the total of:

- Your foreign earned income exclusion, plus
- Your housing exclusion.

Carryover. You can carry over to the next year any part of your housing deduction that is not allowed because of the limit. You are allowed to carry over your excess housing deduction to the next year only. If you can't deduct it in the next year, you can't carry it over to any other year. You deduct the carryover in figuring adjusted gross income. The amount of carryover you can deduct is limited to your foreign earned income for the year of the carryover minus the total of your foreign earned income exclusion, housing exclusion, and housing deduction for that year.

Additional child tax credit. You can't take the additional child tax credit if you claim the foreign housing deduction.

Married Couples

If both you and your spouse qualify for the foreign housing exclusion or the foreign housing deduction, how you figure the benefits depends on whether you maintain separate households.

Separate Households

If you and your spouse live apart and maintain separate households, you both may be able to claim the foreign housing exclusion or the foreign housing deduction. You both can claim the exclusion or the deduction if both of the following conditions are met.

- You and your spouse have different tax homes that aren't within reasonable commuting distance of each other.
- Neither spouse's residence is within reasonable commuting distance of the other spouse's tax home.

Housing exclusion. Each spouse claiming a housing exclusion must figure separately the part of the housing amount that is attributable to employer-provided amounts, based on his or her separate foreign earned income.

One Household

If you and your spouse lived in the same foreign household and file a joint return, you must figure your housing amounts jointly. If you file separate returns, only one spouse can claim the housing exclusion or deduction.

In figuring your housing amount jointly, you can combine your housing expenses and figure one base housing amount. Either spouse (but not both) can claim the housing exclusion or housing deduction. However, if you and your spouse have different periods of residence or presence and the one with the shorter period of residence or presence claims the exclusion or deduction, you can claim as housing expenses only the expenses for that shorter period.

Example. Tom and Jane live together and file a joint return. Tom was a bona fide resident of and had his tax home in Ghana from August 17, 2021, through December 31, 2022. Jane was a bona fide resident of and had her tax home in Ghana from September 15, 2021, through December 31, 2022.

During 2021, Tom received \$75,000 of foreign earned income and Jane received \$50,000 of foreign earned income. Tom paid \$10,000 for housing expenses, of which \$7,500 was for expenses incurred from September 15 through the end of the year. Jane paid \$3,000 for housing expenses in 2021, all of which were incurred during her period of residence in Ghana.

Tom and Jane figure their housing amount jointly. If Tom claims the housing exclusion, their housing expenses would be \$13,000 (\$10,000 + \$3,000) and their base housing amount, using Tom's 2021 period of residence (August 17–December 31, 2021), would be \$6,527 ($\47.64×137 days). Tom's housing amount would be \$6,473 ($\$13,000 - \$6,527$). If, instead, Jane claims the housing exclusion, their housing expenses would be limited to \$10,500 ($\$7,500 + \$3,000$) and their base housing amount, using Jane's period of residence (September 15–December 31, 2021), would be \$5,145 ($\47.64×108 days). Jane's housing amount would be \$5,355 ($\$10,500 - \$5,145$).

Form 2555

Use [Form 2555](#) to claim the foreign earned income exclusion. You must file Form 2555 each year you are claiming the exclusion.

Also, use Form 2555 to claim either the foreign housing exclusion or the foreign housing deduction. Form 2555 shows how you meet the bona fide residence test or physical presence test, how much of your earned income is excluded, and how to figure the amount of your allowable housing exclusion or deduction.

Note. Don't submit Form 2555 by itself.

If you are a U.S. citizen or resident alien who is a citizen or national of a U.S. treaty country, you can claim the exclusion under the bona fide residence test. You should fill out Parts I, II, IV, and V of Form 2555. In filling out Part II, be sure to give your visa type and the period of your bona fide residence. Frequently, these items are overlooked.

U.S. citizens and all resident aliens can claim the exclusion under the physical presence test. You should fill out Parts I, III, IV, and V of Form 2555. When filling out Part III, be sure to insert the beginning and ending dates of your 12-month period and the dates of your arrivals and departures, as requested in the travel schedule.

You must fill out Part VI if you are claiming a foreign housing exclusion or deduction.

If you are claiming the foreign earned income exclusion, fill out Part VII.

If you are claiming the foreign earned income exclusion, the foreign housing exclusion, or both, fill out Part VIII.

Finally, fill out Part IX if you are claiming the foreign housing deduction.

If you and your spouse both qualify to claim the foreign earned income exclusion, the foreign housing exclusion, or the foreign housing deduction, you and your spouse must file separate Forms 2555 to claim these benefits. See the discussion earlier under [Separate Households](#).

5.

Deductions and Credits

Topics

This chapter discusses:

- The rules concerning items related to excluded income,
- Contributions to foreign charitable organizations,
- Contributions to individual retirement arrangements (IRAs),
- Taxes of foreign countries and U.S. territories, and
- How to report deductions.

Useful Items

You may want to see:

Publication

- 501** Dependents, Standard Deduction, and Filing Information
- 514** Foreign Tax Credit for Individuals
- 523** Selling Your Home
- 590-A** Contributions to Individual Retirement Arrangements (IRAs)
- 597** Information on the United States–Canada Income Tax Treaty

Form (and Instructions)

- 1116** Foreign Tax Credit
- 2106** Employee Business Expenses
- 2555** Foreign Earned Income
- Schedule A (Form 1040)** Itemized Deductions
- Schedule C (Form 1040)** Profit or Loss From Business
- SS-5** Application for a Social Security Card
- W-7** Application for IRS Individual Taxpayer Identification Number

See [chapter 7](#) for information about getting these publications and forms.

Items Related to Excluded Income

U.S. citizens and resident aliens living outside the United States are generally allowed the same deductions as citizens and residents living in the United States.

If you choose to exclude foreign earned income or housing amounts, you cannot deduct, exclude, or claim a credit for any item that can be allocated to or charged against the excluded amounts. This includes any expenses, losses, and other normally deductible items that are allocable to the excluded income. You can deduct only those expenses connected with earning includible income.

These rules apply only to items definitely related to the excluded earned income and they do not apply to other items that aren't definitely related to any particular type of gross income. These rules don't apply to items such as:

- Qualified retirement contributions,
- Alimony payments,
- Charitable contributions,
- Medical expenses,
- Mortgage interest, or
- Real estate taxes on your personal residence.

For purposes of these rules, your housing deduction isn't treated as allocable to your excluded income, but the deduction for self-employment tax is.

If you receive foreign earned income in a tax year after the year in which you earned it, you may have to file an amended return for the earlier year to properly adjust the amounts of deductions, credits, or exclusions allocable to your foreign earned income and housing exclusions.

Example. In 2020, you had \$95,600 of foreign earned income and \$9,500 of deductions allocable to your foreign earned income. You did not have a housing exclusion. Because you excluded all of your foreign earned income, you would not have been able to claim any of the deductions on your 2020 return.

In 2021, you received a \$14,000 bonus for work you did abroad in 2020. You can exclude \$12,000 of the bonus because the limit on the foreign earned income exclusion for 2020 was \$107,600 and you have already excluded

\$95,600. Since you must include \$2,000 of the bonus (\$14,000 – \$12,000) for work you did in 2020 in income, you can file an amended return for 2020 to claim a \$173 (\$9,500 x \$2,000/\$109,600) of the deductions. These are the deductions allocable to the foreign earned income (\$9,500) multiplied by the includible portion of the foreign earned income (\$2,000) and divided by the total foreign earned income for 2020 (\$109,600).

Contributions to Foreign Charitable Organizations

If you make contributions directly to a foreign church or other foreign charitable organization, you generally cannot deduct them. Exceptions are explained under [Canadian, Mexican, and Israeli charities](#), later.

You can deduct contributions to a U.S. organization that transfers funds to a charitable foreign organization if the U.S. organization controls the use of the funds by the foreign organization or if the foreign organization is just an administrative arm of the U.S. organization.

Canadian, Mexican, and Israeli charities. Under the income tax treaties with Canada, Mexico, and Israel, you may be able to deduct contributions to certain Canadian, Mexican, and Israeli charitable organizations. Generally, you must have income from sources in Canada, Mexico, or Israel, and the organization must meet certain requirements. See [Pub. 597](#) and [Pub. 526](#), Charitable Contributions, for more information.

Contributions to Individual Retirement Arrangements

Contributions to your individual retirement arrangements (IRAs) that are traditional IRAs or Roth IRAs are generally limited to the lesser of \$6,000 (\$7,000 if 50 or older) or your compensation that is includible in your gross income for the tax year. In determining compensation for this purpose, don't take into account amounts you exclude under either the foreign earned income exclusion or the foreign housing exclusion. Don't reduce your compensation by the foreign housing deduction.

If you are covered by an employer retirement plan at work, your deduction for your contributions to your traditional IRAs is generally limited based on your modified adjusted gross income. This is your adjusted gross income figured without taking into account the foreign earned income exclusion, the foreign housing exclusion, or the foreign housing deduction. Other modifications are also required. For more information on contributions to IRAs, see [Pub. 590-A](#).

Taxes of Foreign Countries and U.S. Territories

You can take either a credit or a deduction for income taxes paid to a foreign country or a U.S. territory. Taken as a deduction, foreign income taxes reduce your taxable income. Taken as a credit, foreign income taxes reduce your tax liability. You must treat all foreign income taxes the same way. If you take a credit for any foreign income taxes, you cannot deduct any foreign income taxes. However, you may be able to deduct other foreign taxes. See [Deduction for Other Foreign Taxes](#), later.

There is no rule to determine whether it is to your advantage to take a deduction or a credit for foreign income taxes. In most cases, it is to your advantage to take foreign income taxes as a tax credit, which you subtract directly from your U.S. tax liability, rather than as a deduction in figuring taxable income. However, if foreign income taxes were imposed at a high rate and the proportion of foreign income to U.S. income is small, a lower final tax may result from deducting the foreign income taxes. In any event, you should figure your tax liability both ways and then use the one that is better for you.

You can make or change your choice within 10 years from the due date for filing the tax return on which you are entitled to take either the deduction or the credit.

Foreign income taxes. These are generally income taxes you pay to any foreign country or U.S. territory.

Foreign income taxes on U.S. return. Foreign income taxes can only be taken as a credit on Schedule 3 (Form 1040), line 1, or as an itemized deduction on Schedule A (Form 1040). These amounts cannot be included as withheld income taxes on Form 1040 or 1040-SR, line 25.

Foreign taxes paid on excluded income. You cannot take a credit or deduction for foreign income taxes paid on earnings you exclude from tax under any of the following.

- Foreign earned income exclusion.
- Foreign housing exclusion.
- Territory exclusion.

If your wages are completely excluded, you can't deduct or take a credit for any of the foreign taxes paid on your wages.

If only part of your wages is excluded, you can't deduct or take a credit for the foreign income taxes allocable to the excluded part. You find the taxes allocable to your excluded wages by applying a fraction to the foreign taxes paid on foreign earned income received during the tax year. The numerator (top number) of the fraction is your excluded foreign earned income received during the tax year minus deductible expenses allocable to that income (not including the foreign housing deduction). The denominator (bottom number) of the fraction is your total foreign earned income received during the

tax year minus all deductible expenses allocable to that income (including the foreign housing deduction).

If foreign law taxes both earned income and some other type of income and the taxes on the other type can't be separated, the denominator of the fraction is the total amount of income subject to foreign tax minus deductible expenses allocable to that income.



If you take a foreign tax credit for tax on income you could have excluded under your choice to exclude foreign earned income or your choice to exclude foreign housing costs, one or both of the choices may be considered revoked.

Qualified Sick and Family Leave Credits

See the discussions related to the [credit for sick leave](#) and [credit for family leave](#), earlier, to determine if you are eligible for these credits under the FFCRA.

Credit for Foreign Income Taxes

If you take the foreign tax credit, you may have to file [Form 1116](#) with Form 1040 or 1040-SR. Form 1116 is used to figure the amount of foreign tax paid or accrued that can be claimed as a foreign tax credit. Don't include the amount of foreign tax paid or accrued as withheld federal income taxes on Form 1040 or 1040-SR, line 25.

The foreign income tax for which you can claim a credit is the amount of legal and actual tax liability you pay or accrue during the year. The amount for which you can claim a credit is not necessarily the amount withheld by the foreign country. You can't take a foreign tax credit for income tax you paid to a foreign country that would be refunded by the foreign country if you made a claim for refund.

Subsidies. If a foreign country returns your foreign tax payments to you in the form of a subsidy, you cannot claim a foreign tax credit based on these payments. This rule applies to a subsidy provided by any means that is determined, directly or indirectly, by reference to the amount of tax, or to the base used to figure the tax.

Some ways of providing a subsidy are refunds, credits, deductions, payments, or discharges of obligations. A credit is also not allowed if the subsidy is given to a person related to you, or persons who participated in a transaction or a related transaction with you.

Limit

The foreign tax credit is limited to the part of your total U.S. tax that is in proportion to your taxable income from sources outside the United States compared to your total taxable income. The allowable foreign tax credit can't be more than your actual foreign tax liability.

Exemption from limit. You won't be subject to this limit and won't have to file Form 1116 if you meet all three of the following requirements.

- Your only foreign source income for the year is passive income (dividends, interest, royalties, etc.) that is reported to you on a payee statement (such as a Form 1099-DIV or 1099-INT).
- Your foreign taxes for the year that qualify for the credit are not more than \$300 (\$600 if you are filing a joint return) and are reported on a payee statement.
- You elect this procedure.

If you make this election, you can't carry back or carry over any unused foreign tax to or from this year.

Separate limit. You must figure the limit on a separate basis with regard to "section 951A category income," "foreign branch category income," "passive category income," "general category income," "section 901(j) income," "certain income re-sourced by treaty," and any "lump-sum distributions" from an employer benefit plan for which the special averaging treatment is used to determine your tax (see the [Instructions for Form 1116](#)).

Figuring the limit. In figuring taxable income in each category, you take into account only the amount that you must include in income on your federal tax return. Don't take any excluded amount into account.

To determine your taxable income in each category, deduct expenses and losses that are definitely related to that income.

Other expenses (such as itemized deductions or the standard deduction) not definitely related to specific items of income must be apportioned to the foreign income in each category by multiplying them by a fraction. The numerator (top number) of the fraction is your gross foreign income in the separate limit category. The denominator (bottom number) of the fraction is your gross income from all sources. For this purpose, gross income includes income that is excluded under the foreign earned income provisions but does not include any other exempt income. You must use special rules for deducting interest expenses. For more information on allocating and apportioning your deductions, see [Pub. 514](#).

Recapture of foreign losses. If you have an overall foreign loss and the loss reduces your U.S. source income (resulting in a reduction of your U.S. tax liability with respect to U.S. source income), you must recapture the loss in later years when you have taxable income from foreign sources. This is done by treating a part of your taxable income from foreign sources in later years as U.S. source income. This reduces the numerator of the limiting fraction and the resulting foreign tax credit limit.

Recapture of domestic losses. If you have an overall domestic loss and the loss reduces your foreign source income (resulting in a reduction in the amount of foreign tax credit you can claim for taxes paid during that year), you must recapture the loss in later years when you have U.S. source taxable income. This is done by treating a part of your taxable income from U.S. sources in later years as foreign source in-

come. This increases the numerator of the limitation fraction and the resulting foreign tax credit limit.

Foreign tax credit carryback and carryover. The amount of foreign income tax not allowed as a credit because of the limit can be carried back 1 year and carried forward 10 years.

There is a new Schedule B (Form 1116) which is used to reconcile your prior year foreign tax carryover with your current year foreign tax carryover. This new schedule replaces the previous attachment requirement for Part III, line 10 (Form 1116). For more information, see the Instructions for Schedule B (Form 1116) and the instructions for Form 1116, line 10, at [IRS.gov/Form1116](#).

Deduction for Foreign Income Taxes

Instead of taking the foreign tax credit, you can deduct foreign income taxes as an itemized deduction on [Schedule A \(Form 1040\)](#).

You deduct only foreign income taxes paid on income that is subject to U.S. tax. You can't deduct foreign taxes paid on earnings you exclude from tax under any of the following.

- Foreign earned income exclusion.
- Foreign housing exclusion.
- Territory exclusion.

Example. You are a U.S. citizen and qualify to exclude your foreign earned income. Your excluded wages in Country X are \$70,000 on which you paid income tax of \$10,000. You received dividends from Country X of \$2,000 on which you paid income tax of \$600.

You can deduct the \$600 tax payment because the dividends relating to it are subject to U.S. tax. Because you exclude your wages, you cannot deduct the income tax of \$10,000.

If you exclude only a part of your wages, see the earlier discussion under [Foreign taxes paid on excluded income](#).

Deduction for Other Foreign Taxes

You cannot deduct other foreign taxes, such as real property or personal property taxes, unless you incurred the expenses in a trade or business or in the production of income.

On the other hand, you can generally deduct real property or personal property taxes when you pay them to U.S. territories. But if you claim the territory exclusion, see [Pub. 570](#).

The deduction for foreign taxes other than foreign income taxes isn't related to the foreign tax credit. You can take deductions for these miscellaneous foreign taxes and also claim the foreign tax credit for income taxes imposed by a foreign country.

How To Report Deductions

If you exclude foreign earned income or housing amounts, how you show your deductions on

your tax return and how you figure the amount allocable to your excluded income depends on whether the expenses are used in figuring adjusted gross income (Form 1040 or 1040-SR, line 11) or are itemized deductions.

If you have deductions used in figuring adjusted gross income, enter the total amount for each of these items on the appropriate lines and schedules of Form 1040 or 1040-SR. Generally, you figure the amount of a deduction related to the excluded income by multiplying the deduction by a fraction, the numerator of which is your foreign earned income exclusion and the denominator of which is your foreign earned income. Enter the amount of the deduction(s) related to excluded income on line 44 of Form 2555.

If you have itemized deductions related to excluded income, enter on Schedule A (Form 1040) only the part not related to excluded income. You figure that amount by subtracting from the total deduction the amount related to excluded income. Generally, you figure the amount that is related to the excluded income by multiplying the total deduction by a fraction, the numerator of which is your foreign earned income exclusion and the denominator of which is your foreign earned income. Attach a statement to your return showing how you figured the deductible amount.

Example 1. You are a U.S. citizen employed as an accountant. Your tax home is in Germany for the entire tax year. You meet the physical presence test. Your foreign earned income for the year was \$129,875 and your investment income was \$8,890. After excluding \$108,700, your adjusted gross income is \$30,065.

Generally, mortgage interest is deductible on Schedule A (Form 1040). You paid mortgage interest on your foreign home of \$15,000. Your mortgage is under \$750,000. Reduce the \$15,000 of your mortgage interest by 83.7% (\$12,555) because you excluded 83.7% (\$108,700/\$129,875) of your foreign earned income.

The remaining mortgage interest of \$2,445 can be deducted on line 8a or 8b of Schedule A (Form 1040).

Example 2. You are a U.S. citizen, have a tax home in Spain, and meet the physical presence test. You are self-employed and personal services produce the business income. Your gross income was \$121,842, business expenses were \$67,695, and net income (profit) was \$54,147. You choose the foreign earned income exclusion and exclude \$108,700 of your gross income. Since your excluded income is 89.21% (0.8921) of your total income, 89.21% (0.8921) of your business expenses are not deductible. Report your total income and expenses on Schedule C (Form 1040). On Form 2555, you will show the following.

- Line 20a, \$121,842, gross income.
- Lines 42 and 43, \$108,700, foreign earned income exclusion.
- Line 44, \$60,391 (89.21% (0.8921) × \$67,695), business expenses attributable to the exclusion.

Example 3. Assume in *Example 2* that both capital and personal services combine to produce the business income. No more than 30% of your net income or \$16,244 (\$54,147 × 30% (0.30)), assuming that this amount is a reasonable allowance for your services, is considered earned and can be excluded. Your exclusion of \$16,244 is 13.33% of your gross income (\$16,244 ÷ \$121,842). Because you excluded 13.33% of your net income, \$9,024 (13.33% (0.1333) × \$67,695) of your business expenses is attributable to the excluded income and is not deductible.

Example 4. You are a U.S. citizen, have a tax home in Brazil, and meet the physical presence test. You are self-employed and both capital and personal services combine to produce business income. Your gross income was \$146,000, business expenses were \$172,000, and your net loss was \$26,000. A reasonable allowance for the services you performed for the business is \$77,000. Because you incurred a net loss, the earned income limit of 30% of your net profit does not apply. The \$77,000 is foreign earned income. If you choose to exclude the \$77,000, you exclude 52.74% of your gross income (\$77,000 ÷ \$146,000), and 52.74% of your business expenses (\$90,713) is attributable to that income and is not deductible. Show your total income and expenses on Schedule C (Form 1040). On Form 2555, exclude \$77,000 and show \$90,713 on line 44. Subtract line 44 from line 43, and enter the difference as a negative (in parentheses) on line 45. Because this amount is negative, enter it as a positive (no parentheses) on line 8d of Schedule 1 (Form 1040), and combine it with your other income to arrive at total income on line 9 of Schedule 1 (Form 1040).

TIP *In this situation (Example 4), you would probably not want to choose the foreign earned income exclusion if this was the first year you were eligible. If you had chosen the exclusion in an earlier year, you might want to revoke the choice for this year. To do so would mean that you could not claim the exclusion again for the next 5 tax years without IRS approval. See [Choosing the Exclusion](#) in chapter 4.*

Example 5. You are a U.S. citizen, have a tax home in Panama, and meet the bona fide residence test. You have been performing services for clients as a partner in a firm that provides services exclusively in Panama. Capital investment is not material in producing the partnership's income. Under the terms of the partnership agreement, you are to receive 50% of the net profits. The partnership received gross income of \$248,000 and incurred operating expenses of \$102,250. Of the net profits of \$145,750, you received \$72,875 as your distributive share.

You choose to exclude \$108,700 of your share of the gross income. Because you exclude 87.66% (0.8766) (\$108,700 ÷ \$124,000) of your share of the gross income, you cannot deduct \$44,816, which is 87.66% (0.8766) of your share of the operating expenses (87.66% (0.8766) × \$51,125). Report \$72,875, your distributive share of the partnership net profit, on Schedule E (Form 1040). On Form 2555, show

\$108,700 on line 42 and show \$44,816 on line 44. Your exclusion on Form 2555 is \$63,884.

6.

Tax Treaty Benefits

Topics

This chapter discusses:

- Some common tax treaty benefits,
- How to get help in certain situations, and
- How to get copies of tax treaties.

Useful Items

You may want to see:

Publication

- 597** Information on the United States–Canada Income Tax Treaty
- 901** U.S. Tax Treaties

See [chapter 7](#) for information about getting these publications.

Purpose of Tax Treaties

The United States has bilateral income tax treaties, also known as conventions, with many countries. See Table 3 under the list of tax treaty tables at [IRS.gov/Individuals/International-Taxpayers/Tax-Treaty-Tables](https://www.irs.gov/Individuals/International-Taxpayers/Tax-Treaty-Tables) for a list of countries with which the United States has an income tax treaty in effect.

Under these treaties, citizens and residents of the United States who are subject to taxes imposed by the foreign countries are entitled to certain credits, deductions, exemptions, and reductions in the rate of taxes of those foreign countries. If a foreign country with which the United States has a treaty imposes a tax on you, you may be entitled to benefits under the treaty.

Treaty benefits are generally available to residents of the United States. They are generally not available to U.S. citizens who do not reside in the United States. However, certain treaty benefits and safeguards, such as the nondiscrimination provisions, are available to U.S. citizens residing in the treaty countries. U.S. citizens residing in a foreign country may also be entitled to benefits under that country's tax treaties with third countries.

Certification of U.S. residency. Use [Form 8802](#) to request certification of U.S. residency for purposes of claiming benefits under a tax treaty. Certification can be requested for the current and any prior calendar years.



You should examine the specific treaty articles to find if you are entitled to a tax credit, tax exemption, reduced rate of tax, or other treaty benefit or safeguard.

For more information on tax treaties, go to [IRS.gov/Individuals/International-Taxpayers/Tax-Treaties](https://www.irs.gov/Individuals/International-Taxpayers/Tax-Treaties).

Common Benefits

Some common tax treaty benefits are explained below. The credits, deductions, exemptions, reductions in rate, and other benefits provided by tax treaties are subject to conditions and various restrictions. Benefits provided by certain treaties are not necessarily provided by others.

Personal service income. If you are a U.S. resident who is in a treaty country for a limited number of days in the tax year and you meet certain other requirements, the payment you receive for personal services performed in that country may be exempt from that country's income tax.

Professors and teachers. If you are a U.S. resident, the payment you receive for the first 2 or 3 years that you are teaching or doing research in a treaty country may be exempt from that country's income tax.

Students, trainees, and apprentices. If you are a U.S. resident, amounts you receive from the United States for study, research, or business, professional, and technical training in a treaty country may be exempt from a treaty country's income tax.

Some treaties exempt non-compensatory grants, allowances, and awards received from governmental and certain nonprofit organizations. Also, under certain circumstances, a limited amount of pay received by students, trainees, and apprentices for the performance of services in a treaty country may be exempt from the income tax of many treaty countries.

Pensions and annuities. If you are a U.S. resident, nongovernment pensions and annuities you receive may be exempt from the income tax of treaty countries.

Most treaties contain separate provisions for exempting government pensions and annuities from treaty country income tax, and some treaties provide exemption from the treaty country's income tax for social security payments.

Investment income. If you are a U.S. resident, investment income, such as interest and dividends, that you receive from sources in a treaty country may be exempt from that country's income tax or taxed at a reduced rate.

Several treaties provide exemption for capital gains (other than from sales of real property in most cases) if specified requirements are met.

Tax credit provisions. If you are a U.S. resident who receives income from or owns capital in a foreign country, you may be taxed on that income or capital by both the United States and the treaty country.

Most treaties allow you to take a credit against or deduction from the treaty country's taxes based on the U.S. tax on the income.

Nondiscrimination provisions. Most U.S. tax treaties provide that the treaty country cannot discriminate by imposing more burdensome taxes on U.S. citizens who are residents of the treaty country than it imposes on its own citizens in the same circumstances.

Saving clauses. U.S. treaties contain saving clauses that provide that the treaties do not affect the U.S. taxation of its own citizens and residents. As a result, U.S. citizens and residents cannot generally use the treaty to reduce their U.S. tax liability.

However, most treaties provide exceptions to saving clauses that allow certain provisions of the treaty to be claimed by U.S. citizens or residents. It is important that you examine the applicable saving clause to determine if an exception applies.

More information on treaties. *Pub. 901* contains an explanation of treaty provisions that apply to amounts received by teachers, students, workers, and government employees and pensioners who are alien nonresidents or residents of the United States. Since treaty provisions are generally reciprocal, you can usually substitute "U.S." for the name of the treaty country whenever it appears, and vice versa when "U.S." appears in the treaty exemption discussions in *Pub. 901*.

Pub. 597 contains an explanation of a number of frequently used provisions of the United States–Canada income tax treaty.

For additional information, go to [IRS.gov/Individuals/International-Taxpayers/Tax-Treaties](https://www.irs.gov/Individuals/International-Taxpayers/Tax-Treaties).

Competent Authority Assistance

If you are a U.S. citizen or resident alien, you can request assistance from the U.S. competent authority if you think that the actions of the United States, a treaty country, or both, cause or will cause a tax situation not intended by the treaty between the two countries. You should read any treaty articles, including the mutual agreement procedure article, that apply in your situation.

The U.S. competent authority cannot consider requests involving countries with which the United States does not have a tax treaty.

A complete listing of the information that must be included with the request can be found in Revenue Procedure 2015-40, available at [IRS.gov/irb/2015-35_IRB#RP-2015-40](https://www.irs.gov/irb/2015-35_IRB#RP-2015-40).

Your request for competent authority consideration should be addressed to:

Commissioner
Large Business and International Division
1111 Constitution Ave. NW
SE:LB:TTPO:TA:TAIT NCA 570-03
Washington, DC 20224
(Attention: TAIT)

Obtaining Copies of Tax Treaties

You can get complete information about treaty provisions from the taxing authority in the country from which you receive income or from the treaty itself. You can obtain the text of most U.S. treaties at [IRS.gov/Businesses/International-Businesses/United-States-Income-Tax-Treaties-A-to-Z](https://www.irs.gov/Businesses/International-Businesses/United-States-Income-Tax-Treaties-A-to-Z).

If you have questions about a treaty, you can visit [IRS.gov/Individuals/International-Taxpayers/Tax-Treaties](https://www.irs.gov/Individuals/International-Taxpayers/Tax-Treaties).

7.


How To Get Tax Help

If you are overseas and need tax help, see [Taxpayer Assistance Outside the United States](https://www.irs.gov/Individuals/International-Taxpayers/Assistance-Outside-the-United-States), later.

Taxpayer Assistance Inside the United States

If you have questions about a tax issue; need help preparing your tax return; or want to download free publications, forms, or instructions, go to [IRS.gov](https://www.irs.gov) to find resources that can help you right away.

Preparing and filing your tax return. After receiving all your wage and earnings statements (Forms W-2, W-2G, 1099-R, 1099-MISC, 1099-NEC, etc.); unemployment compensation statements (by mail or in a digital format) or other government payment statements (Form 1099-G); and interest, dividend, and retirement statements from banks and investment firms (Forms 1099), you have several options to choose from to prepare and file your tax return. You can prepare the tax return yourself, see if you qualify for free tax preparation, or hire a tax professional to prepare your return.

 For 2021, if you received an Economic Impact Payment (EIP), refer to your Notice 1444-C, Your 2021 Economic Impact Payment. If you received Advance Child Tax Credit payments, refer to your Letter 6419.

Free options for tax preparation. Go to [IRS.gov](https://www.irs.gov) to see your options for preparing and filing your return online or in your local community, if you qualify, which include the following.

- **Free File.** This program lets you prepare and file your federal individual income tax return for free using brand-name tax-preparation-and-filing software or Free File

fillable forms. However, state tax preparation may not be available through Free File. Go to [IRS.gov/FreeFile](https://www.irs.gov/FreeFile) to see if you qualify for free online federal tax preparation, e-filing, and direct deposit or payment options.

- **VITA.** The Volunteer Income Tax Assistance (VITA) program offers free tax help to people with low-to-moderate incomes, persons with disabilities, and limited-English-speaking taxpayers who need help preparing their own tax returns. Go to [IRS.gov/VITA](https://www.irs.gov/VITA), download the free IRS2Go app, or call 800-906-9887 for information on free tax return preparation.
- **TCE.** The Tax Counseling for the Elderly (TCE) program offers free tax help for all taxpayers, particularly those who are 60 years of age and older. TCE volunteers specialize in answering questions about pensions and retirement-related issues unique to seniors. Go to [IRS.gov/TCE](https://www.irs.gov/TCE), download the free IRS2Go app, or call 888-227-7669 for information on free tax return preparation.
- **MilTax.** Members of the U.S. Armed Forces and qualified veterans may use MilTax, a free tax service offered by the Department of Defense through Military OneSource. For more information, go to [MilitaryOneSource \(MilitaryOneSource.com/MilTax\)](https://www.MilitaryOneSource.com/MilTax).

Also, the IRS offers Free Fillable Forms, which can be completed online and then filed electronically regardless of income.

Using online tools to help prepare your return.

- Go to [IRS.gov/Tools](https://www.irs.gov/Tools) for the following.
- The [Earned Income Tax Credit Assistant \(IRS.gov/EITCAssistant\)](https://www.irs.gov/EITCAssistant) determines if you're eligible for the earned income credit (EIC).
 - The [Online EIN Application \(IRS.gov/EIN\)](https://www.irs.gov/EIN) helps you get an employer identification number (EIN) at no cost.
 - The [Tax Withholding Estimator \(IRS.gov/W4app\)](https://www.irs.gov/W4app) makes it easier for everyone to pay the correct amount of tax during the year. The tool is a convenient, online way to check and tailor your withholding. It's more user-friendly for taxpayers, including retirees and self-employed individuals. The features include the following.
 - ▶ Easy to understand language.
 - ▶ The ability to switch between screens, correct previous entries, and skip screens that don't apply.
 - ▶ Tips and links to help you determine if you qualify for tax credits and deductions.
 - ▶ A progress tracker.
 - ▶ A self-employment tax feature.
 - ▶ Automatic calculation of taxable social security benefits.
 - The [First-Time Homebuyer Credit Account Look-up \(IRS.gov/HomeBuyer\)](https://www.irs.gov/HomeBuyer) tool provides information on your repayments and account balance.
 - The [Sales Tax Deduction Calculator \(IRS.gov/SalesTax\)](https://www.irs.gov/SalesTax) figures the amount you can claim if you itemize deductions on Schedule A (Form 1040).



Getting answers to your tax questions. On IRS.gov, you can get up-to-date information on current events and changes in tax law.

- [IRS.gov/Help](https://www.irs.gov/Help): A variety of tools to help you get answers to some of the most common tax questions.
- [IRS.gov/ITA](https://www.irs.gov/ITA): The Interactive Tax Assistant, a tool that will ask you questions and, based on your input, provide answers on a number of tax law topics.
- [IRS.gov/Forms](https://www.irs.gov/Forms): Find forms, instructions, and publications. You will find details on 2021 tax changes and hundreds of interactive links to help you find answers to your questions.
- You may also be able to access tax law information in your electronic filing software.

Need someone to prepare your tax return?

There are various types of tax return preparers, including tax preparers, enrolled agents, certified public accountants (CPAs), attorneys, and many others who don't have professional credentials. If you choose to have someone prepare your tax return, choose that preparer wisely. A paid tax preparer is:

- Primarily responsible for the overall substantive accuracy of your return,
- Required to sign the return, and
- Required to include their preparer tax identification number (PTIN).

Although the tax preparer always signs the return, you're ultimately responsible for providing all the information required for the preparer to accurately prepare your return. Anyone paid to prepare tax returns for others should have a thorough understanding of tax matters. For more information on how to choose a tax preparer, go to [Tips for Choosing a Tax Preparer](https://www.irs.gov/TipsforChoosingaTaxPreparer) on IRS.gov.

Advance child tax credit payments. From July through December 2021, advance payments were sent automatically to taxpayers with qualifying children who met certain criteria. The advance child tax credit payments were early payments of up to 50% of the estimated child tax credit that taxpayers may properly claim on their 2021 returns. Go to [IRS.gov/AdvCTC](https://www.irs.gov/AdvCTC) for more information about these payments and how they can affect your taxes.

Coronavirus. Go to [IRS.gov/Coronavirus](https://www.irs.gov/Coronavirus) for links to information on the impact of the coronavirus, as well as tax relief available for individuals and families, small and large businesses, and tax-exempt organizations.

Tax reform. Tax reform legislation affects individuals, businesses, and tax-exempt and government entities. Go to [IRS.gov/TaxReform](https://www.irs.gov/TaxReform) for information and updates on how this legislation affects your taxes.

Employers can register to use Business Services Online. The Social Security Administration (SSA) offers online service at [SSA.gov/employer](https://www.SSA.gov/employer) for fast, free, and secure online W-2 filing options to CPAs, accountants, enrolled agents, and individuals who process Form W-2, Wage and Tax Statement, and Form W-2c, Corrected Wage and Tax Statement.

IRS social media. Go to [IRS.gov/SocialMedia](https://www.irs.gov/SocialMedia) to see the various social media tools the IRS uses to share the latest information on tax changes, scam alerts, initiatives, products, and services. At the IRS, privacy and security are our highest priority. We use these tools to share public information with you. **Don't** post your social security number (SSN) or other confidential information on social media sites. Always protect your identity when using any social networking site.

The following IRS YouTube channels provide short, informative videos on various tax-related topics in English, Spanish, and ASL.

- [Youtube.com/irsvideos](https://www.youtube.com/irsvideos).
- [Youtube.com/irsvideosmultilingua](https://www.youtube.com/irsvideosmultilingua).
- [Youtube.com/irsvideosASL](https://www.youtube.com/irsvideosASL).

Watching IRS videos. The IRS Video portal ([IRSVideos.gov](https://www.irs.gov/IRSVideos)) contains video and audio presentations for individuals, small businesses, and tax professionals.

Online tax information in other languages. You can find information on [IRS.gov/MyLanguage](https://www.irs.gov/MyLanguage) if English isn't your native language.

Free Over-the-Phone Interpreter (OPI) Service. The IRS is committed to serving our multilingual customers by offering OPI services. The OPI Service is a federally funded program and is available at Taxpayer Assistance Centers (TACs), other IRS offices, and every VITA/TCE return site. The OPI Service is accessible in more than 350 languages.

Accessibility Helpline available for taxpayers with disabilities. Taxpayers who need information about accessibility services can call 833-690-0598. The Accessibility Helpline can answer questions related to current and future accessibility products and services available in alternative media formats (for example, braille, large print, audio, etc.).

Getting tax forms and publications. Go to [IRS.gov/Forms](https://www.irs.gov/Forms) to view, download, or print all of the forms, instructions, and publications you may need. Or, you can go to [IRS.gov/OrderForms](https://www.irs.gov/OrderForms) to place an order.

Getting tax publications and instructions in eBook format. You can also download and view popular tax publications and instructions (including the Instructions for Form 1040) on mobile devices as eBooks at [IRS.gov/eBooks](https://www.irs.gov/eBooks).

Note. IRS eBooks have been tested using Apple's iBooks for iPad. Our eBooks haven't been tested on other dedicated eBook readers, and eBook functionality may not operate as intended.

Access your online account (individual taxpayers only). Go to [IRS.gov/Account](https://www.irs.gov/Account) to securely access information about your federal tax account.

- View the amount you owe and a breakdown by tax year.
- See payment plan details or apply for a new payment plan.

- Make a payment or view 5 years of payment history and any pending or scheduled payments.
- Access your tax records, including key data from your most recent tax return, your EIP amounts, and transcripts.
- View digital copies of select notices from the IRS.
- Approve or reject authorization requests from tax professionals.
- View your address on file or manage your communication preferences.

Tax Pro Account. This tool lets your tax professional submit an authorization request to access your individual taxpayer [IRS online account](https://www.irs.gov/onlineaccount). For more information, go to [IRS.gov/TaxProAccount](https://www.irs.gov/TaxProAccount).

Using direct deposit. The fastest way to receive a tax refund is to file electronically and choose direct deposit, which securely and electronically transfers your refund directly into your financial account. Direct deposit also avoids the possibility that your check could be lost, stolen, or returned undeliverable to the IRS. Eight in 10 taxpayers use direct deposit to receive their refunds. If you don't have a bank account, go to [IRS.gov/DirectDeposit](https://www.irs.gov/DirectDeposit) for more information on where to find a bank or credit union that can open an account online.

Getting a transcript of your return. The quickest way to get a copy of your tax transcript is to go to [IRS.gov/Transcripts](https://www.irs.gov/Transcripts). Click on either "Get Transcript Online" or "Get Transcript by Mail" to order a free copy of your transcript. If you prefer, you can order your transcript by calling 800-908-9946.

Reporting and resolving your tax-related identity theft issues.

- Tax-related identity theft happens when someone steals your personal information to commit tax fraud. Your taxes can be affected if your SSN is used to file a fraudulent return or to claim a refund or credit.
- The IRS doesn't initiate contact with taxpayers by email, text messages, telephone calls, or social media channels to request personal or financial information. This includes requests for personal identification numbers (PINs), passwords, or similar information for credit cards, banks, or other financial accounts.
- Go to [IRS.gov/IdentityTheft](https://www.irs.gov/IdentityTheft), the IRS Identity Theft Central webpage, for information on identity theft and data security protection for taxpayers, tax professionals, and businesses. If your SSN has been lost or stolen or you suspect you're a victim of tax-related identity theft, you can learn what steps you should take.
- Get an Identity Protection PIN (IP PIN). IP PINs are six-digit numbers assigned to taxpayers to help prevent the misuse of their SSNs on fraudulent federal income tax returns. When you have an IP PIN, it prevents someone else from filing a tax return with your SSN. To learn more, go to [IRS.gov/IPPIN](https://www.irs.gov/IPPIN).

Ways to check on the status of your refund.

- Go to [IRS.gov/Refunds](https://www.irs.gov/Refunds).

- Download the official IRS2Go app to your mobile device to check your refund status.
- Call the automated refund hotline at 800-829-1954.

Note. The IRS can't issue refunds before mid-February 2022 for returns that claimed the EIC or the additional child tax credit (ACTC). This applies to the entire refund, not just the portion associated with these credits.

Making a tax payment. Go to [IRS.gov/Payments](https://www.irs.gov/Payments) for information on how to make a payment using any of the following options.

- **IRS Direct Pay:** Pay your individual tax bill or estimated tax payment directly from your checking or savings account at no cost to you.
- **Debit or Credit Card:** Choose an approved payment processor to pay online or by phone.
- **Electronic Funds Withdrawal:** Schedule a payment when filing your federal taxes using tax return preparation software or through a tax professional.
- **Electronic Federal Tax Payment System:** Best option for businesses. Enrollment is required.
- **Check or Money Order:** Mail your payment to the address listed on the notice or instructions.
- **Cash:** You may be able to pay your taxes with cash at a participating retail store.
- **Same-Day Wire:** You may be able to do same-day wire from your financial institution. Contact your financial institution for availability, cost, and time frames.

Note. The IRS uses the latest encryption technology to ensure that the electronic payments you make online, by phone, or from a mobile device using the IRS2Go app are safe and secure. Paying electronically is quick, easy, and faster than mailing in a check or money order.

What if I can't pay now? Go to [IRS.gov/Payments](https://www.irs.gov/Payments) for more information about your options.

- Apply for an [online payment agreement \(IRS.gov/OPA\)](https://www.irs.gov/OPA) to meet your tax obligation in monthly installments if you can't pay your taxes in full today. Once you complete the online process, you will receive immediate notification of whether your agreement has been approved.
- Use the [Offer in Compromise Pre-Qualifier](https://www.irs.gov/OIC) to see if you can settle your tax debt for less than the full amount you owe. For more information on the Offer in Compromise program, go to [IRS.gov/OIC](https://www.irs.gov/OIC).

Filing an amended return. You can now file Form 1040-X electronically with tax filing software to amend 2019 or 2020 Forms 1040 and 1040-SR. To do so, you must have e-filed your original 2019 or 2020 return. Amended returns for all prior years must be mailed. Go to [IRS.gov/Form1040X](https://www.irs.gov/Form1040X) for information and updates.

Checking the status of your amended return. Go to [IRS.gov/WMAR](https://www.irs.gov/WMAR) to track the status of Form 1040-X amended returns.

Note. It can take up to 3 weeks from the date you filed your amended return for it to show up in our system, and processing it can take up to 16 weeks.

Understanding an IRS notice or letter you've received. Go to [IRS.gov/Notices](https://www.irs.gov/Notices) to find additional information about responding to an IRS notice or letter.

You can use Schedule LEP, Request for Change in Language Preference, to state a preference to receive notices, letters, or other written communications from the IRS in an alternative language, when these are available. Once your Schedule LEP is processed, the IRS will determine your translation needs and provide you translations when available. If you have a disability requiring notices in an accessible format, see Form 9000.

Contacting your local IRS office. Keep in mind, many questions can be answered on IRS.gov without visiting an IRS TAC. Go to [IRS.gov/LetUsHelp](https://www.irs.gov/LetUsHelp) for the topics people ask about most. If you still need help, IRS TACs provide tax help when a tax issue can't be handled online or by phone. All TACs now provide service by appointment, so you'll know in advance that you can get the service you need without long wait times. Before you visit, go to [IRS.gov/TACLocator](https://www.irs.gov/TACLocator) to find the nearest TAC and to check hours, available services, and appointment options. Or, on the IRS2Go app, under the Stay Connected tab, choose the Contact Us option and click on "Local Offices."

The Taxpayer Advocate Service (TAS) Is Here To Help You

What Is TAS?

TAS is an *independent* organization within the IRS that helps taxpayers and protects taxpayer rights. Their job is to ensure that every taxpayer is treated fairly and that you know and understand your rights under the [Taxpayer Bill of Rights](https://www.irs.gov/TaxpayerBillOfRights).

How Can You Learn About Your Taxpayer Rights?

The Taxpayer Bill of Rights describes 10 basic rights that all taxpayers have when dealing with the IRS. Go to [TaxpayerAdvocate.IRS.gov](https://www.irs.gov/TaxpayerAdvocate) to help you understand what these rights mean to you and how they apply. These are *your* rights. Know them. Use them.

What Can TAS Do for You?

TAS can help you resolve problems that you can't resolve with the IRS. And their service is free. If you qualify for their assistance, you will be assigned to one advocate who will work with you throughout the process and will do everything possible to resolve your issue. TAS can help you if:

- Your problem is causing financial difficulty for you, your family, or your business;
- You face (or your business is facing) an immediate threat of adverse action; or

- You've tried repeatedly to contact the IRS but no one has responded, or the IRS hasn't responded by the date promised.

How Can You Reach TAS?

TAS has offices [in every state, the District of Columbia, and Puerto Rico](#). Your local advocate's number is in your local directory and at [TaxpayerAdvocate.IRS.gov/Contact-Us](#). You can also call them at 877-777-4778.

How Else Does TAS Help Taxpayers?

TAS works to resolve large-scale problems that affect many taxpayers. If you know of one of these broad issues, report it to them at [IRS.gov/SAMS](#).

TAS for Tax Professionals

TAS can provide a variety of information for tax professionals, including tax law updates and guidance, TAS programs, and ways to let TAS know about systemic problems you've seen in your practice.

Low Income Taxpayer Clinics (LITCs)

LITCs are independent from the IRS. LITCs represent individuals whose income is below a

certain level and need to resolve tax problems with the IRS, such as audits, appeals, and tax collection disputes. In addition, LITCs can provide information about taxpayer rights and responsibilities in different languages for individuals who speak English as a second language. Services are offered for free or a small fee for eligible taxpayers. To find an LITC near you, go to [TaxpayerAdvocate.IRS.gov/about-us/Low-Income-Taxpayer-Clinics-LITC](#) or see IRS Pub. 4134, [Low Income Taxpayer Clinic List](#).

Taxpayer Assistance Outside the United States



If you are outside the United States, you can call 267-941-1000 (English-speaking only). This number is not toll free.



If you wish to write instead of calling, please address your letter to:

Internal Revenue Service
International Accounts
Philadelphia, PA 19255-0725
U.S.A.

Additional contacts for taxpayers who live outside the United States are available at [IRS.gov/uac/Contact-My-Local-Office-Internationally](#).

Taxpayer Advocate Service (TAS). If you live outside of the United States, you can call TAS at 787-522-8601 in English or 787-522-8600 in Spanish. You can contact TAS at:

Internal Revenue Service
Taxpayer Advocate Service
City View Plaza, 48 Carr 165, 5th floor,
Suite 200,
Guaynabo, P.R. 00968-8000

You can call TAS toll free at 877-777-4778. For more information on TAS and contacts if you are outside of the United States, go to [IRS.gov/Advocate/Local-Taxpayer-Advocate/Contact-Your-Local-Taxpayer-Advocate](#).

Questions and Answers

This section answers tax-related questions commonly asked by taxpayers living abroad.

Filing Requirements—Where, When, and How

1) When are U.S. income tax returns due?

Generally, for calendar year taxpayers, U.S. income tax returns are due on April 15. If you are a U.S. citizen or resident and both your tax home and your abode are outside the United States and Puerto Rico on the regular due date, an automatic extension is granted to June 15 for filing the return. Interest will be charged on any tax due, as shown on the return, from April 15.

2) I am going abroad this year and expect to qualify for the foreign earned income exclusion. How can I secure an extension of time to file my return, when should I file my return, and what forms are required?

a) You should file Form 2350 by the due date of your return to request an extension of time to file. Form 2350 is a special form for those U.S. citizens or residents abroad who expect to qualify for the foreign earned income exclusion or the housing exclusion or deduction under either the bona fide residence test or physical presence test and would like to have an extension of time to delay filing until after they have qualified.

b) If the extension is granted, you should file your return after you qualify, but by the approved extension date.

c) You must file your Form 1040 or 1040-SR with Form 2555.

3) My entire income qualifies for the foreign earned income exclusion. Must I file a tax return?

Generally, yes. Every U.S. citizen or resident who receives income must file a U.S. income tax return unless total income without regard to the foreign earned income exclusion is below an amount based on filing status. The income levels for filing purposes are discussed under [Filing Requirements](#) in chapter 1.

4) I was sent abroad by my company in November of last year. I plan to secure an extension of time on Form 2350 to file my tax return for last year because I expect to qualify for the foreign earned income exclusion under the physical presence test. However, if my company recalls me to the United States before the end of the qualifying period and I find I will not qualify for the exclusion, how and when should I file my return?

If your regular filing date has passed, you should file a return, Form 1040 (Form 1040 or 1040-SR for 2021), as soon as possible for last year. Include a statement with this return noting that you have returned to the United States and won't qualify for the foreign earned income exclusion. You must report your worldwide income on the return. If you paid a foreign tax on the income earned abroad, you may be able to either deduct this tax as an itemized deduction or claim it as a credit against your U.S. income tax.

However, if you pay the tax due after the regular due date, interest will be charged from the regular due date until the date the tax is paid.

5) I am a U.S. citizen and have no taxable income from the United States, but I have substantial income from a foreign source. Am I required to file a U.S. income tax return?

Yes. All U.S. citizens and resident aliens are subject to U.S. tax on their worldwide income. If you paid taxes to a foreign government on income from sources outside the United States, you may be able to claim a foreign tax credit against your U.S. income tax liability for the foreign taxes paid. Form 1116 is used to figure the allowable credit.

6) I am a U.S. citizen who has retired, and I expect to remain in a foreign country. Do I have any further U.S. tax obligations?

Your U.S. tax obligation on your income is the same as that of a retired person living in the United States. (See the discussion on [filing requirements](#) in chapter 1 of this publication.)

7) I have been a bona fide resident of a foreign country for over 5 years. Is it necessary for me to pay estimated tax?

U.S. taxpayers overseas have the same requirements for paying estimated tax as those in the United States. See the discussion under [Estimated Tax](#) in chapter 1.

Overseas taxpayers should not include in their estimated income any income they receive that is, or will be, exempt from U.S. taxation.

Overseas taxpayers can deduct their estimated housing deduction in figuring their estimated tax.

The first installment of estimated tax is due on April 15 of the year for which the income is earned.

8) Will a check payable in foreign currency be acceptable in payment of my U.S. tax?

Generally, only U.S. currency is acceptable for payment of income tax. However, if you are a Fulbright grantee, see [Fulbright Grant](#) in chapter 1.

9) I have met the test for physical presence in a foreign country and am filing returns for 2 years. Must I file a separate Form 2555 with each return?

Yes. A Form 2555 must be filed with each Form 1040 or 1040-SR tax return on which the benefits of income earned abroad are claimed.

10) Does a Form 2555 with a Schedule C or Form W-2 attached constitute a return?

No. The Form 2555, Schedule C, and Form W-2 are merely attachments and do not relieve you of the requirement to file a Form 1040 or 1040-SR to show the sources of income reported and the exclusions or deductions claimed.

11) On Form 2350, Application for Extension of Time To File U.S. Income Tax Return, I stated that I would qualify for the foreign earned income exclusion under the physical presence test. If I qualify under the bona fide residence test, can I file my return on that basis?

Yes. You can claim the foreign earned income exclusion and the foreign housing exclusion or deduction under either test as long as you meet the requirements. You are not bound by the test indicated in the application for extension of time. You must be sure, however, that you file the Form 1040 or 1040-SR

by the date approved on Form 2350, because a return filed after that date may be subject to a failure-to-file penalty.

If you will not qualify under the bona fide residence test until a date later than the extension granted under the physical presence rule, apply for a new extension to a date 30 days beyond the date you expect to qualify as a bona fide resident.

12) I am a U.S. citizen who worked in the United States for 6 months last year. I accepted employment overseas in July of last year and expect to qualify for the foreign earned income exclusion. Should I file a return and pay tax on the income earned in the United States during the first 6 months and then, when I qualify, file another return covering the last 6 months of the year?

No. You have the choice of one of the following two methods of filing your return.

a) You can file your return when due under the regular filing rules, report all your income without excluding your foreign earned income, and pay the tax due. After you have qualified for the exclusion, you can file an amended return, Form 1040-X, accompanied by Form 2555, for a refund of any excess tax paid.

b) You can postpone the filing of your tax return by applying on Form 2350 for an extension of time to file to a date 30 days beyond the date you expect to qualify under either the bona fide residence test or the physical presence test, then file your return reflecting the exclusion of foreign earned income. This allows you to file only once and saves you from paying the tax and waiting for a refund. However, interest is charged on any tax due on the postponed tax return, but interest is not paid on refunds paid within 45 days after the return is filed.

13) I am a U.S. citizen. I have lived abroad for a number of years and recently realized that I should have been filing U.S. income tax returns. How do I correct this oversight in not having filed returns for these years?

File the late returns as soon as possible, stating your reason for filing late. For advice on filing the returns, you should contact an IRS representative.

14) In 2016, I qualified to exclude my foreign earned income, but I did not claim this exclusion on the return I filed in 2017. I paid all outstanding taxes with the return. Can I file a claim for refund now?

It is too late to claim this refund because a claim for refund must be filed within 3 years from the date the return was filed or 2 years from the date the tax was paid, whichever is later. A return filed before the due date is considered filed on the due date.

Meeting the Requirements of Either the Bona Fide Residence Test or the Physical Presence Test

1) I recently came to Country X to work for the Orange Tractor Co. and I expect to be here for 5 or 6 years. I understand that upon the completion of 1 full year I will qualify for an exclusion or deduction under the bona fide residence test. Is this correct?

Not necessarily. The law provides that to qualify under this test for the foreign earned income exclusion, the foreign housing exclusion, or the foreign housing deduction, a person must be a bona fide resident of a foreign country or countries for an uninterrupted period that includes an entire tax year.

If, like most U.S. citizens, you file your return on a calendar-year basis, the tax year referred to in the law would be from January 1 to December 31 of any particular year. Unless you established residence in Country X on January 1, it would be more than 1 year before you would be a bona fide resident of a foreign country. Once you have completed your qualifying period, however, you are entitled to exclude the income or to claim the housing exclusion or deduction from the date you established bona fide residence.

2) I understand the physical presence test to be simply a matter of being physically present in a foreign country for at least 330 days within 12 consecutive months; but what are the criteria of the bona fide residence test?

To be a bona fide resident of a foreign country, you must show that you entered a foreign country intending to remain there for an indefinite or prolonged period and, to that end, you are making your home in that country. Consideration is given

to the type of quarters occupied, whether your family went with you, the type of visa, the employment agreement, and any other factor pertinent to show whether your stay in the foreign country is indefinite or prolonged.

To claim the foreign earned income exclusion or foreign housing exclusion or deduction under this test, the period of foreign residence must include 1 full tax year (usually January 1 – December 31), but once you meet this time requirement, you figure the exclusions and the deduction from the date the residence actually began.

3) To meet the qualification of “an uninterrupted period that includes an entire tax year,” do I have to be physically present in a foreign country for the entire year?

No. “Uninterrupted” refers to the bona fide residence proper and not to the physical presence of the individual. During the period of bona fide residence in a foreign country, even during the first full year, you can leave the country for brief and temporary trips back to the United States or elsewhere for vacation, or even for business. To preserve your status as a bona fide resident of a foreign country, you must have a clear intention of returning from those trips, without unreasonable delay, to your foreign residence.

4) I am a U.S. citizen and during 2020 was a bona fide resident of Country X. On January 15, 2021, I was notified that I was to be assigned to Country Y. I was recalled to New York for 90 days of orientation and then went to Country Y, where I have been since. Although I was not in Country Y on January 1, I was a bona fide resident of Country X and was in Country Y on December 31, 2021. My family remained in Country X until completion of the orientation period, and my household goods were shipped directly to my new post. Am I a bona fide resident of a foreign country for 2021, or must I wait for the entire year of 2022 to become one?

Because you did not break your period of foreign residence, you would continue to be a bona fide resident of a foreign country for 2021.

5) Due to illness, I returned to the United States before I completed my qualifying period to claim the foreign earned income exclusion. Can I figure the exclusion for the period I resided abroad?

No. You aren't entitled to any exclusion of foreign earned income because you did not complete your qualifying period under either the bona fide residence test or physical presence test. If you paid foreign tax on the income earned abroad, you may be able to claim that tax as a deduction or as a credit against your U.S. tax.

6) Can a resident alien of the United States qualify for an exclusion or deduction under the bona fide residence test or the physical presence test?

Resident aliens of the United States can qualify for the foreign earned income exclusion, the foreign housing exclusion, or the foreign housing deduction if they meet the requirements of the physical presence test. Resident aliens who are citizens or nationals of a country with which the United States has an income tax treaty in effect can also qualify under the bona fide residence test.

7) On August 13 of last year, I left the United States and arrived in Country Z to work for the Gordon Manufacturing Company. I expected to be able to exclude my foreign earned income under the physical presence test because I planned to be in Country Z for at least 1 year. However, I was reassigned back to the United States and left Country Z on July 1 of this year. Can I exclude any of my foreign earned income?

No. You can't exclude any of the income you earned in Country Z because you were not in a foreign country for at least 330 full days as required under the physical presence test.

Foreign Earned Income

1) I am an employee of the U.S. Government working abroad. Can all or part of my government income earned abroad qualify for the foreign earned income exclusion?

No. The foreign earned income exclusion applies to your foreign earned income. Amounts paid by the United States or its agencies to

their employees aren't treated, for this purpose, as foreign earned income.

2) I qualify for the foreign earned income exclusion under the bona fide residence test. Does my foreign earned income include my U.S. dividends and the interest I receive on a foreign bank account?

No. The only income that is foreign earned income is income from the performance of personal services abroad. Investment income isn't earned income. However, you must include it in gross income reported on your Form 1040 or 1040-SR.

3) My company pays my foreign income tax on my foreign earnings. Is this taxable compensation?

Yes. The amount is compensation for services performed. The tax paid by your company should be reported on Form 1040 or 1040-SR, line 1, and on Form 2555, Part IV, line 22f.

4) I live in an apartment in a foreign city for which my employer pays the rent. Should I include in my income the cost to my employer (\$1,200 a month) or the fair market value of equivalent housing in the United States (\$800 a month)?

You must include in income the fair market value (FMV) of the facility provided, where it is provided. This will usually be the rent your employer pays. Situations when the FMV is not included in income are discussed in chapter 4 under [Exclusion of Meals and Lodging](#).

5) My U.S. employer pays my salary into my U.S. bank account. Is this income considered earned in the United States or is it considered foreign earned income?

If you performed the services to earn this salary outside the United States, your salary is considered earned abroad. It does not matter that you are paid by a U.S. employer or that your salary is deposited in a U.S. bank account in the United States. The source of salary, wages, commissions, and other personal service income is the place where you perform the services.

6) What is considered a foreign country?

For the purposes of the foreign earned income exclusion and the

foreign housing exclusion or deduction, any territory under the sovereignty of a country other than the United States is a foreign country. U.S. territories are not treated as foreign countries.

7) What is the source of earned income?

The source of earned income is the place where the work or personal services that produce the income are performed. In other words, income received for work in a foreign country has its source in that country. The foreign earned income exclusion and the foreign housing exclusion or deduction are limited to earned income from sources within foreign countries.

Foreign Earned Income Exclusion

1) I qualify for the foreign earned income exclusion and earned more than \$108,700 during 2021. Am I entitled to the maximum \$108,700 exclusion?

Not necessarily. Although you qualify for the foreign earned income exclusion, you may not have met either the bona fide residence test or the physical presence test for your entire tax year. If you didn't meet either of these tests for your entire tax year, you must prorate the maximum exclusion based on the number of days that you did meet either test during the year.

2) How do I qualify for the foreign earned income exclusion?

To be eligible, you must have a tax home in a foreign country and be a U.S. citizen or resident alien. You must be either a bona fide resident of a foreign country or countries for an uninterrupted period that includes an entire tax year, or you must be physically present in a foreign country or countries for at least 330 full days during any period of 12 consecutive months. U.S. citizens may qualify under either test. The physical presence test applies to all resident aliens, while the bona fide residence test applies to resident aliens who are citizens or nationals of a country with which the United States has an income tax treaty in effect.

Your tax home must be in the foreign country or countries throughout your period of residence or presence. For this purpose, your period of physical presence is the 330 full days during which you are present in a foreign country, not the 12

consecutive months during which those days occur.

3) Is it true that my foreign earned income exclusion cannot exceed my foreign earned income?

Yes. The amount of the exclusion is limited each year to the amount of your foreign earned income after reducing that income by the foreign housing exclusion. The foreign earned income must be earned during the part of the tax year that you have your tax home abroad and meet either the bona fide residence test or the physical presence test.

4) My wife and I are both employed, reside together, and file a joint return. We meet the qualifications for claiming the foreign earned income exclusion. Do we each figure a separate foreign earned income exclusion and foreign housing exclusion?

You figure your foreign earned income exclusion separately because you both have foreign earned income. The amount of the exclusion for each of you can't exceed your separate foreign earned incomes.

You must figure your housing exclusion jointly. See [Married Couples](#) in chapter 4 for further details.

Social Security and Railroad Retirement Benefits

1) Are U.S. social security benefits taxable?

Benefits received by U.S. citizens and resident aliens may be taxable, depending on the total amount of income and the filing status of the taxpayer. Under certain treaties, U.S. social security benefits are exempt from U.S. tax if taxed by the country of residence.

Benefits similar to social security received from other countries by U.S. citizens or residents may be taxable. (Refer to U.S. tax treaties with various countries for any benefit granted by the treaty.)

2) As a U.S. citizen or resident alien, how do I figure the amount of my U.S. social security benefits to include in gross income?

See [Pub. 915](#) to figure if any of your benefits are includible in income.

3) How are railroad retirement benefits taxed?

The part of a tier 1 railroad retirement benefit that is equivalent to the social security benefit you would have been entitled to receive if the railroad employee's work had been covered under the social security system rather than the railroad retirement system is treated the same as a social security benefit, discussed above.

The other part of a tier 1 benefit that is not considered a social security equivalent benefit is treated like a private pension or annuity, as are tier 2 railroad retirement benefits. [Pensions and annuities](#) are explained in chapter 4 under *Earned and Unearned Income*. Vested dual benefits and supplemental annuities are also treated like private pensions, but are fully taxable.

The proper amounts of the social security equivalent part of tier 1 benefits and any special guaranty benefits are shown on the Form RRB-1099 that you receive from the Railroad Retirement Board. The taxable amounts of the non-social security equivalent part of tier 1, tier 2, vested dual benefits, and supplemental annuities are shown on the Form RRB-1099-R that you receive from the Railroad Retirement Board.

Social Security Tax and Self-Employment Tax

1) I am a minister with earned income from abroad and expect to qualify for the foreign earned income exclusion. How do I pay my self-employment tax?

File a Form 1040 or 1040-SR with Schedule SE (Form 1040) and Form 2555. Figure your self-employment tax on Schedule SE (Form 1040) and enter it on Schedule 2 (Form 1040) as the tax due with the return.

2) Because I expect to qualify for the foreign earned income exclusion, I have requested and received an extension of time until January 30, 2023, to file my 2021 return. However, since I will be paying self-employment tax on my spouse's income, should I file a 2021 return when due, pay the self-employment tax, and then file another return when I qualify for the exclusion?

No. You don't need to file a 2021 Form 1040 or 1040-SR (the regular income tax return) when due if you have received an extension. Instead, you should pay enough estimated tax to cover the self-employment tax and any income tax that would be due after taking out the amount of excludable income.

Income Tax Withholding

1) How can I get my employer to stop withholding federal income taxes from wages while I am overseas and eligible for the foreign earned income exclusion?

File a statement in duplicate with your employer stating that withholding should be reduced because you meet the bona fide residence test or physical presence test. Also, see the following question.

2) Does the IRS provide forms to be used by employees requesting employers to stop withholding income tax from wages they expect to be excluded as income earned abroad?

Yes. Form 673 is a sample statement that can be used by individuals who expect to qualify for the foreign earned income exclusion under the bona fide residence test or the physical presence test.

3) I am a U.S. citizen residing overseas, and I receive dividend and interest income from U.S. sources from which tax is being withheld at a rate of 30%. How can I have this situation corrected?

File Form W-9 (indicating that you are a U.S. citizen) with the withholding agents who are paying you the dividends and interest. This is their authority to stop withholding the 30% income tax at the source on payments due to you.

4) As a U.S. citizen receiving dividend and interest income from the United States from which tax has been withheld, do I report the net dividend and interest income on my return, or do I report the gross amount and take credit for the tax withheld?

You must report the gross amount of the income received and take a tax credit for the tax withheld. This is to your advantage because the tax withheld is deducted in full from the tax due. It is also advisable to attach a statement to your return explaining this tax credit so there will be no question as to the amount of credit allowable.

Deductions

1) Can I claim a foreign tax credit even though I do not itemize deductions?

Yes. You can claim the foreign tax credit even though you don't itemize deductions.

2) I had to pay customs duty on a few things I brought back with me from Europe last summer. Can I include customs fees with my other deductible taxes?

No. Customs duties, like federal excise taxes, aren't deductible.

3) What types of foreign taxes are deductible?

Generally, foreign income taxes are deductible as itemized deductions. Foreign income taxes are deductible only if you do not claim the foreign tax credit. Foreign income taxes paid on excluded income aren't deductible as an itemized deduction.

Other foreign taxes, such as real property or personal property taxes, are only deductible if you incurred the expenses in a trade or business or in the production of income.

Note. Foreign income taxes are usually claimed under the credit provisions, if they apply, because this is more advantageous in most cases.

Scholarship and Fellowship Grantees

1) I am a Fulbright grantee. What documentation must I attach to my return?

a) There are no special tax forms for Fulbright grantees. File on a regular Form 1040 or 1040-SR.

b) If you claim exemption as a scholarship or fellowship grantee, submit brochures and correspondence describing the grant and your duties.

c) If you are located in a foreign country and wish to pay tax in foreign currency, you should submit a certified statement showing that you were a Fulbright grantee and at least 70% of the grant was paid in nonconvertible foreign currency.

2) I taught and lectured abroad under taxable grants. What expenses can I deduct?

You may be able to deduct your travel, meals, and lodging expenses if you are temporarily absent from your regular place of employment. For more information about deducting travel, meals, and lodging expenses, see [Pub. 463](#), Travel, Gift, and Car Expenses.

General Tax Questions

1) Can IRS personnel recommend tax practitioners who prepare returns?

No. IRS employees aren't permitted to recommend tax practitioners who prepare income tax returns.

2) I just filed my return. How do I check the status of my refund?

See *Refund Information* in your tax return instructions.

3) I haven't received my refund from last year's return. Can I claim the credit against this year's tax?

No. That would cause problems to both years' returns. If your last year's refund is overdue, call or write the IRS. If you write to the IRS, be sure to include your social security number (or individual taxpayer identification number) in the letter.

4) I forgot to include interest income when I filed my return last week. What should I do?

To correct a mistake of this sort, you should prepare Form 1040-X. Include the omitted interest income, refigure the tax, and send the form as soon as possible along with any additional tax due to the Internal Revenue Service Center where you filed your return. You may also be able to file your Form 1040-X electronically.

Use Form 1040-X to correct an individual Form 1040 or 1040-SR income tax return filed for any year for which the period of limitations has not expired (usually 3 years after the due date of the return filed, or 2 years after the tax was paid, whichever is later).

5) I am a U.S. citizen and, because I expect to qualify for the foreign earned income exclusion, all my foreign income (which consists solely of salary) will be exempt from U.S. tax. Do I get any tax benefit from income tax I paid on this salary to a foreign country during the tax year?

No. You can't take either a tax credit or a tax deduction for foreign income taxes paid on income that is exempt from U.S. tax because of the foreign earned income exclusion.

6) I am a U.S. citizen stationed abroad. I made a personal loan to a nonresident alien who later went bankrupt. Can I claim a bad debt loss for this money?

Yes. The loss should be reported as a short-term capital loss on Schedule D (Form 1040). You have the burden of proving the validity of the loan, the subsequent bankruptcy, and the recovery or nonrecovery from the loan.

7) With which countries does the United States have tax treaties?

Table 3 under the list of tax treaty tables at [IRS.gov/Individuals/International-Taxpayers/Tax-Treaty-Tables](https://www.irs.gov/Individuals/International-Taxpayers/Tax-Treaty-Tables) lists those countries with which the United States has income tax treaties.

8) I am a retired U.S. citizen living in Europe. My only income is from U.S. sources on which I pay U.S. taxes. I am taxed on the same income in the foreign country where I reside. How do I avoid double taxation?

If you reside in a country that has an income tax treaty with the United States, the treaty will generally contain provisions to eliminate double taxation. Many treaties will provide reduced rates for various types of income. Treaties often provide reciprocal credits in one country for the tax paid to the other country. Nontreaty countries, depending on their laws, may give the same type of credit.

If double taxation with a treaty country exists and you cannot resolve the problem with the tax authorities of the foreign country, you can contact the U.S. competent authority for assistance. See [chapter 6](#) for information on requesting consideration.

9) My total income after claiming the foreign earned income and housing exclusions consists of \$5,000 taxable wages. Am I entitled to claim the earned income credit?

No. If you claim the foreign earned income exclusion, the foreign housing exclusion, or the foreign housing deduction, you can't claim the earned income credit.

10) I am claiming the foreign earned income exclusion. Can I take the additional child tax credit?

No. You can't take the additional child tax credit if you claim either the

foreign earned income or foreign housing exclusion, or the foreign housing deduction.

11) Last May, my employer transferred me to our office in Puerto Rico. I understand that my salary earned in Puerto Rico is tax exempt. Is this correct?

As long as your employer is not the U.S. Government, all income from sources within Puerto Rico is exempt from U.S. tax if you are a bona fide resident of Puerto Rico during the entire tax year. The income you received from Puerto Rican sources the year you moved to Puerto Rico is not exempt. The tax paid to Puerto Rico in the year you moved to Puerto Rico can be claimed as a foreign tax credit on Form 1116.

12) I am a U.S. citizen married to a nonresident alien. Can I qualify to use the head of household tax rates?

Yes. Although your nonresident alien spouse cannot qualify you as a head of household, you may qualify if you maintain a household for a qualifying child or other relative.

If your spouse was a nonresident alien at any time during the year and you do not choose to treat your nonresident alien spouse as a resident alien, then you are treated as unmarried for head of household purposes. You must have another qualifying person and meet the other tests to be eligible to file as head of household. You can use the head of a household column in the Tax Table or Section D of the Tax Computation Worksheet.

It may be advantageous to choose to treat your nonresident alien spouse as a U.S. resident and file a joint income tax return. Once you make the choice, however, you must report the worldwide income of both yourself and your spouse.

For more information on head of household filing status, get [Pub. 501](#).

Penalties and Interest

1) Does the June 15 extended due date for filing my return because both my tax home and my abode are outside the United States and Puerto Rico on the regular due date relieve me from having to pay interest on tax not paid by April 15?

No. An extension, whether an automatic extension or one requested in writing, does not relieve you of the payment of interest on the tax due

as of April 15 following the year for which the return is filed. The interest should be included in your payment.

2) If I wait to file my return until I qualify for the foreign earned income exclusion, I will be charged interest on the U.S. tax I will owe. To avoid being charged interest, can I file my return on time, reporting only my taxable income, excluding my salary for services abroad that will be exempt after I have met the qualifications?

No. If you file a return before you qualify for the exclusion, you must report all income, including all income for services performed abroad, and pay tax on all of it. After you meet the qualifications, you can file a claim for refund by excluding the income earned abroad. If you defer the filing of your return, you can avoid interest on tax due on your return to be filed by paying the tax you estimate you will owe with your request for an extension of

time to file on Form 2350, or by paying enough estimated tax to cover any tax that you expect will be due on the return. ■

**A****Alien:**Resident [2](#)**American Institute in Taiwan, U.S. employees of** [18](#)**American Samoa, territory exclusion** [12](#)**Apprentices, treaty benefits for** [26](#)**Assistance** (See Tax help)**B****Binational social security agreements** [9](#)**Blocked income** [5](#)**Bona fide residence test:**Defined [13](#)First year [14](#)Last year [14](#)Meeting the requirements [31](#)Qualifying for [13, 14](#)Treaty provisions [14](#)Voting by absentee ballot [14](#)Waiver of time requirements [15](#)**C****Camps, foreign** [18](#)**Carryover of housing deduction** [22](#)**Child tax credit** [20-22](#)**Choosing the exclusion** [20](#)
Clergy, self-employment tax on [10](#)**Community income** [19](#)**Competent authority assistance** [26](#)**Contributions:**To foreign charitable organizations [23](#)To IRAs [23](#)**Conventions, income tax** [25](#)**COVID-19 Relief:**Family Leave [11](#)Sick Leave [11](#)**Credit:**Earned income [20, 21](#)Foreign tax [9, 23, 24](#)Related to excluded income [23](#)**Currency:**Foreign [5](#)**D****Deductions:**Contributions to foreign charitable organizations [23](#)Foreign taxes [23, 24, 26, 32](#)Housing, foreign [21](#)IRA contributions [23](#)Related to excluded income [23](#)Reporting [24](#)**Deposit of foreign currency with disbursing officer** [6](#)**E****Earned income:**Foreign [15, 18, 31](#)Source of [16](#)Types of [16-18](#)**Earned income credit** [20, 21](#)**Employer-provided amounts** [21](#)**Estimated tax** [8](#)**Exclusion:**Foreign earned income [18-20](#)Housing [21](#)Meals and lodging [18](#)U.S. territories [12](#)**Extensions:**Filing income tax return [4](#)Meeting bona fide residence or physical presence test [4](#)**F****Fellowships** [17](#)**Figuring actual tax** [5](#)**Figuring estimated tax on nonconvertible foreign currency** [6](#)**Filing information:**Estimated tax [8](#)Filing requirements [3](#)Nonresident spouse treated as resident [7](#)**Filing requirements:**By filing status [3](#)Foreign currency [5](#)When to file and pay [4, 30](#)Where to file [6, 30](#)**Foreign:**Camps [18](#)Country, defined [12](#)Currency [5](#)Earned income [15-18, 31](#)Household, second [21](#)**Foreign currency, deposit with disbursing officer** [6](#)**Foreign earned income:**Defined [15-18](#)U.S. Government employees [18](#)**Foreign earned income exclusion:**Choosing [20](#)Defined [18](#)Earned income credit [20](#)Foreign tax credit [20](#)Income received after year earned [19](#)Limit [19, 20, 32](#)Maximum exclusion [19, 20](#)Part-year exclusion [19](#)Physical presence test, maximum exclusion [19](#)Requirements [11-18](#)Revoking choice [20](#)**Foreign housing exclusion:**Earned income credit [21](#)Foreign tax credit [21](#)**Foreign housing exclusion/deduction:**Carryover of deduction [22](#)Deduction, figuring [21](#)Exclusion, figuring [21](#)Housing amount [20](#)Housing expenses [21](#)Married couples [22](#)Requirements [11-18](#)Second foreign household [21](#)**Foreign tax credit:**Earned income exclusion [20, 21](#)**Foreign taxes:**Credit for [9, 23, 24](#)Deduction for [23, 24, 32](#)Paid on excluded income [23](#)**Form:**1040-ES [8](#)1040-X [5, 7](#)1116 [24](#)2032 [9](#)2350 [5](#)2555 [20, 22](#)3115 [5](#)4361 [10](#)4563 [12](#)4868 [4](#)673 [8](#)8689 [6](#)W-4 [9](#)**Frequently asked questions (FAQs)** [30-34](#)**Fulbright grant** [5, 33](#)**G****General tax questions** [33](#)**Green card test** [2](#)**Guam:**Residents of [6](#)Territory exclusion [12](#)Where to file [6](#)**H****Housing:**Amount [20, 21](#)Deduction [20, 21](#)Exclusion [20, 21](#)Expenses [21](#)**I****Income:**Apprentices, treaty benefits for [26](#)Artist [17](#)Blocked [5](#)Community [19](#)Corporation [16](#)Earned [15-18, 31](#)Employer's property or facilities, use of [17](#)Investment, treaty benefits for [26](#)Partnership [16](#)Pensions and annuities [16, 26](#)Personal service, treaty benefits for [26](#)Professional fees [17](#)Professors, treaty benefits for [26](#)Railroad retirement benefits [32](#)Reimbursement of employee expenses [17](#)Reimbursement of moving expenses [17](#)Rental [16](#)Royalties [16](#)Social security benefits [32](#)Sole proprietorship [16](#)Source of [16](#)Stock options [16](#)Students, treaty benefits for [26](#)Teachers, treaty benefits for [26](#)Trainees, treaty benefits for [26](#)Unearned [16](#)**Indefinite assignment** [12](#)**Individual retirement arrangements (IRAs)** [23](#)**Investment income, treaty benefits for** [26](#)**L****Limit on:**Foreign housing deduction [22](#)Housing expenses [21](#)Income exclusion [19, 20](#)**Lodging, exclusion of** [18](#)**M****Married couples** [22](#)**Meals and lodging, exclusion of** [18](#)**Moving:**Reimbursement of expenses [17](#)**N****Nonresident spouse:**Social security number [7](#)Treated as resident [7](#)**Northern Mariana Islands:**Residents of [6](#)Territory exclusion [12](#)Where to file [6](#)**P****Part-year exclusion** [19](#)**Pay for personal services** [15, 26](#)**Paying U.S. tax in foreign currency** [5](#)**Payment of tax** [4](#)**Penalties and interest** [33](#)**Pensions and annuities:**Income from [16, 26](#)Withholding from [9](#)**Physical presence test:**12-month period [15](#)Defined [14](#)Maximum exclusion [19](#)Meeting the requirements [31](#)Waiver of time requirements [15](#)**Professors, treaty benefits for** [26](#)**Publications** (See Tax help)**Puerto Rico:**Residents of [12](#)Territory exclusion [12](#)

<hr/> <p>Q Questions and answers 30–34</p> <hr/> <p>R Railroad retirement benefits 32 Reimbursement: Accountable plan 17 Employee expenses 17 Moving expenses 17 Resident alien defined 2 Revoking choice to exclude 20</p> <hr/> <p>S Scholarship and fellowship grants 33 Scholarships 17 Second foreign household 21, 22 Self-employment tax: Clergy 10</p>	Exemption from 10 How to pay 32 Who must pay 10 Self-Employment Taxes: Credit 24 Social security and Medicare taxes 9 Social security benefits 32 Social security number: Nonresident spouse 7 Source of earned income 16 Students, treaty benefits for 26 Substantial presence test 2 <hr/> <p>T Taiwan, American Institute in 18 Tax help 26 Tax home 12 Tax treaties: Benefits of 26 Competent authority assistance 26</p>	Determining residence 14 Obtaining copies of 26 Purpose of 25 Teachers, treaty benefits for 26 Temporary assignment, expenses 12 Totalization agreements 9 Trainees, treaty benefits for 26 Travel restrictions 15 Treaties (See Tax treaties) <hr/> <p>U U.S. Government employees 18 U.S. Virgin Islands: Residents of 12 Territory exclusion 12</p> <hr/> <p>V Virgin Islands: Nonresidents of 6 Residents of 6</p>	Where to file 6 <hr/> <p>W Waiver of time requirements 15 When to file and pay 4, 30 Where to file: Claiming exclusion/deduction 6 Commonwealth of the Northern Mariana Islands residents 6 Guam residents 6 No legal residence in U.S. 6 Virgin Islands residents, nonresidents 6</p> <hr/> <p>Withholding: Income tax 8, 32 Pension payments 9</p> <hr/>
---	--	--	---