

Voelzow & Company, Inc.
4804 Lawyers Rd E • Wingate, NC 28174
704-233-9222 • Fax 704-233-9211
E-mail: nvoelzow@perigee.net
Web: www.LaserAlignment.net

Alignment REPORTER

Handbook and online help

1. Contents

1. CONTENTS	II
2. INTRODUCTION	5
3. THE CONCEPT AND INSTALLATION	7
3.1. CONCEPT	7
3.2. INSTALLING THE ALIGNMENT REPORTER	8
3.2.1. INSTALLING THE WINDOWS SOFTWARE	8
3.2.2. CREATING AN ACCOUNT	9
4. FUNCTIONS	11
4.1. PRINTING A MEASUREMENT REPORT	11
4.1.1. OPENING A MEASUREMENT FILE MEASUREMENT FILES CAN BE OPENED DIRECTLY FROM THE SUPPORTED INSTRUMENT, OR FROM THE BACKUP FILE.	11
4.1.2. PRINTING THE REPORT AFTER A MEASUREMENT FILE HAS BEEN SUCCESSFULLY OPENED, THE ALIGNMENT REPORTER REPORT PREVIEW APPEARS.	13
4.2. BACKUP OF MEASUREMENT FILES	15
4.3. PRINTING A MEASUREMENT REPORT FROM A BACKUP FILE	17
5. OVERVIEW OF THE WORK AREA	19
5.1. WELCOME VIEW	19
5.2. REPORT PREVIEW	21
5.3. MENU BAR	22
5.4. TOOL BAR – WELCOME SCREEN	23
5.5. TOOL BAR – REPORT VIEW	24
5.6. SETTINGS OPTIONS	25
5.6.1. UNITS	25
5.6.2. PERSONALIZING	26
5.6.3. REGISTERED INSTRUMENTS	27
5.6.4. BACKUP ARCHIVE	28
5.6.5. SETTINGS OF THE SERIAL PORT	29
6. PC COMMUNICATION	30
6.1. ROTALIGN ULTRA (USB INTERFACE)	30
6.2. ROTALIGN PRO (RS-232 SERIAL INTERFACE)	31

6.3. ROTALIGN (RS-232 SERIAL INTERFACE)	31
6.4. NOVALIGN (USB INTERFACE)	32
6.5. OPTALIGN PLUS / SERIES (RS-232 SERIAL INTERFACE)	32
6.6. SMARTALIGN (RS-232 SERIAL INTERFACE)	33
6.7. INSTALLING THE USB DRIVER	34
6.7.1. ROTALIGN ULTRA / NOVALIGN ON WINDOWS 2000/XP:	34
6.7.2. ROTALIGN ULTRA / NOVALIGN ON WINDOWS 98:	37
<u>7. GENERAL INFORMATION ALIGNMENT REPORTER</u>	<u>40</u>
7.1. SUPPORT	40
7.1.1. TO ACCESS PRODUCT INFORMATION FROM THE PRÜFTECHNIK WEBSITE	40
7.1.2. TO CONTACT PRÜFTECHNIK	40
<u>INDEX</u>	<u>41</u>

Copyright

PRÜFTECHNIK Alignment Systems GmbH. Alle Rechte reserved. This document contains intellectual property belonging to PRÜFTECHNIK Alignment Systems GmbH. The information contained in this document is conditional. PRÜFTECHNIK Alignment Systems GmbH accepts no liability or guarantee the completeness. Although great care has been taken in the preparation of this document, errors and omissions are exempted. PRÜFTECHNIK Alignment Systems GmbH shall not be liable for any damages arising as a result of inaccuracies appearing in this document.

Note

As with all electronic memory software, data can be lost or altered under certain circumstances. PRÜFTECHNIK Alignment Systems GmbH strongly recommends that you keep separate written or printed records of all important data.

PRÜFTECHNIK Alignment Systems GmbH assumes no responsibility for data lost or altered as a result of improper use, repairs, defects, battery replacement/failures or any other cause.

PRÜFTECHNIK Alignment Systems GmbH assumes no responsibility, directly or indirectly, for financial losses or claims from third parties resulting from the use of this product and any of its functions, such as loss or alteration of stored data, etc.

PRÜFTECHNIK Alignment Systems GmbH

Oskar-Messter Str. 15

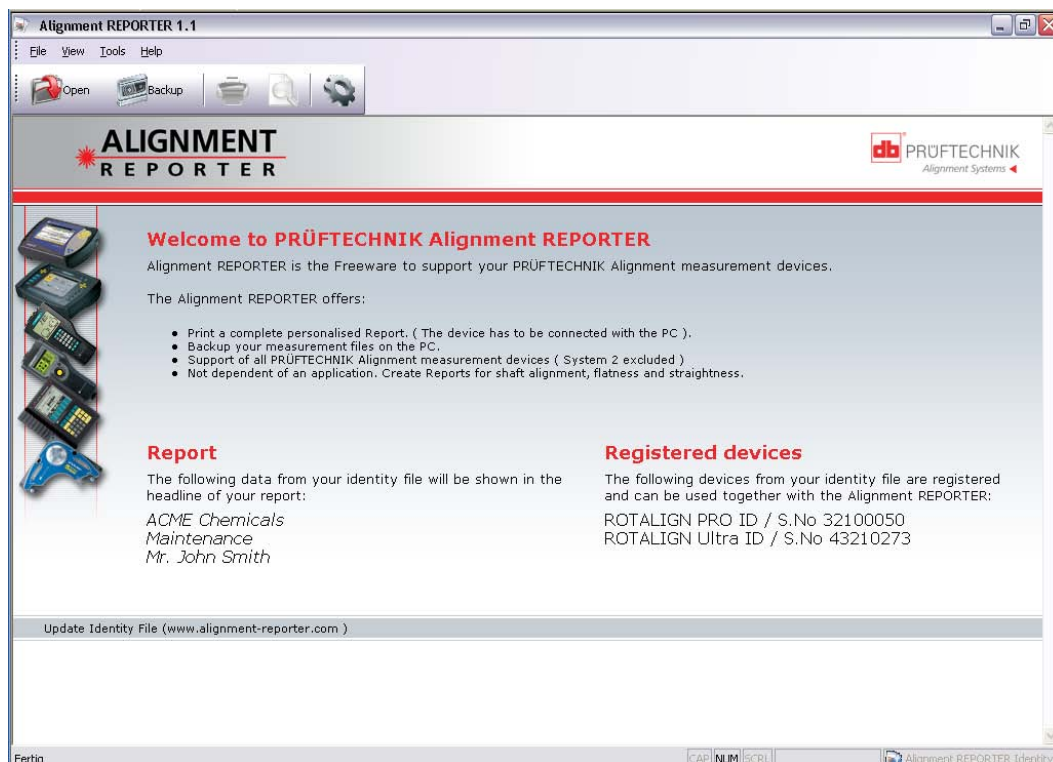
D-85737 Ismaning

www.pruftechnik.com

info@pruftechnik.com

2. Introduction

The Alignment REPORTER is used to generate reports of measurement files created using PRÜFTECHNIK Alignment measuring instruments. The generated reports can be printed on any Microsoft Windows-compatible printer.



2.1.1.1. An overview of the Alignment REPORTER - Functions:

- Generation of reports from following instruments and applications:

Instrument	Supported application
ROTALIGN Ultra	Shaft alignment, Flatness, Straightness
ROTALIGN PRO	Shaft alignment, Flatness, Straightness
ROTALIGN	Shaft alignment (Horizontal)
NOALIGN	Shaft alignment
OPTALIGN PLUS	Shaft alignment
OPTALIGN Series	Shaft alignment
smartALIGN	Shaft alignment

- Creating a backup file in a PC of all measurement files in your instrument. The backup file can always be opened directly from the PC, and reports generated without having to reconnect any measurement instrument.

3. The concept and installation

3.1. Concept

The Alignment REPORTER is a freeware whose use requires activation.

The activation of the Alignment REPORTER is carried out using an identity file. To obtain an identity file please go to www.alignment-reporter.com, the Alignment REPORTER website.

By creating an account through the website necessary user information will be acquired.

3.2. Installing the Alignment REPORTER

The Alignment REPORTER should be installed from the software CD.

Alternatively, you may download the installation software from the Alignment REPORTER website www.alignment-reporter.com.

3.2.1. Installing the Windows software

If using the Alignment REPORTER CD, place it in the CD-ROM drive. The Alignment REPORTER welcome screen should appear automatically.

If not in possession of the CD, visit www.alignment-reporter.com to create an account and download the software. In this case you may ignore the hint given below as this concerns software installation via the CD.



Please note:

If the welcome screen does not open automatically, the CD drive autorun is not enabled.

To start the program navigate to the CD drive in Windows Explorer and run "Start.exe".

Click the button "Installation".

If the software was downloaded from the Alignment REPORTER website, start the set-up file directly using Windows Explorer.

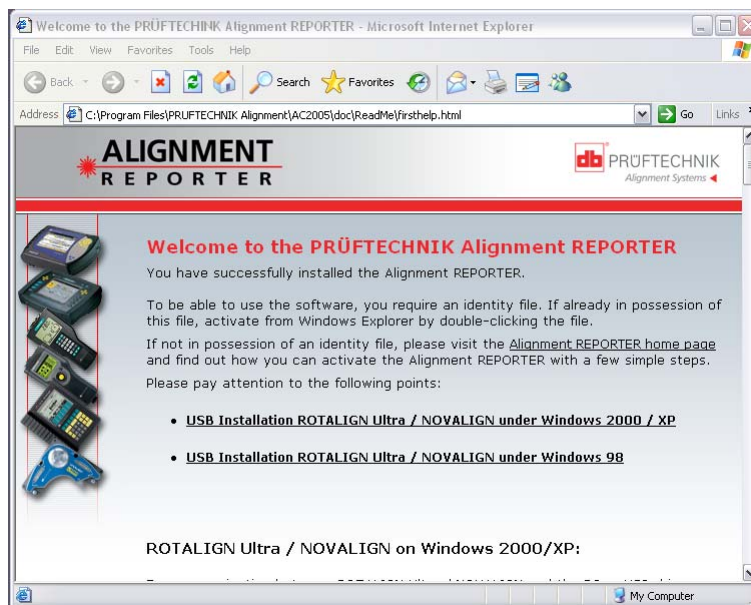
Follow the software installation instructions carefully.



Please note:

If using both the Alignment REPORTER and the PRÜFTECHNIK Alignment CENTER, please ensure that you choose the same installation path. Normally, the suggested installation path should be retained.

After installation is complete, a window opens to direct you to the Alignment REPORTER website (www.alignment-reporter.com). You may use the website to acquire an identity file which is required to activate the Alignment REPORTER. The identity file can only be requested after creating an account.



If using either ROTALIGN Ultra or NOALIGN, the installation of the required USB drivers is explained here.

3.2.2. Creating an account

Proceed to create an account by following the instructions given on the website (www.alignment-reporter.com). Have the serial number of the specific instrument(s) that will use the Alignment REPORTER at hand.

Once an account has been created, user information may be changed as often as is necessary, and any number of instruments may be registered.

After creating and activating your account, you may proceed to login and request your identity file.

Identity file

The identity file is a Unicode text file and contains the information entered while creating an account in the Alignment REPORTER website.

The contents of the identity file can be viewed using any text editor that can interpret Unicode. An example being MS Word.

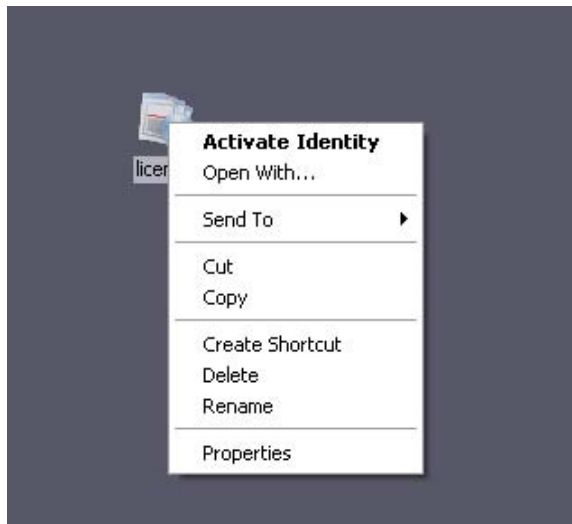
Caution: The contents of an identity file must never be manipulated. Such an action will corrupt the file. The Alignment REPORTER cannot read files that have been changed manually.



An identity file received via e-mail may be saved on a PC. The file saving procedure is dependent on the e-mail program being used.

Select the identity file (license.ACIIdentity) and then click the right mouse. A pop-up menu appears. Click the menu item "Activate Identity".

With this action, the identity file is activated and the Alignment REPORTER starts.



4. Functions

In addition to generating measurement reports for printing, the Alignment REPORTER also allows the creation of a backup for measurement files stored in any specific PRÜFTECHNIK instrument.

- [Printing a measurement report](#)
- [Backup of measurement files](#)
- [Printing a measurement report from a backup file](#)

4.1. Printing a measurement report


Normally, measurement reports generated by the Alignment REPORTER come directly from the specific PRÜFTECHNIK instrument. Measurement reports can alternatively also be generated from the backup file.

To generate a report directly from an instrument requires that the specific instrument be connected to the PC with the instrument configuration "PC communication" selected. Refer to [PC communication](#).

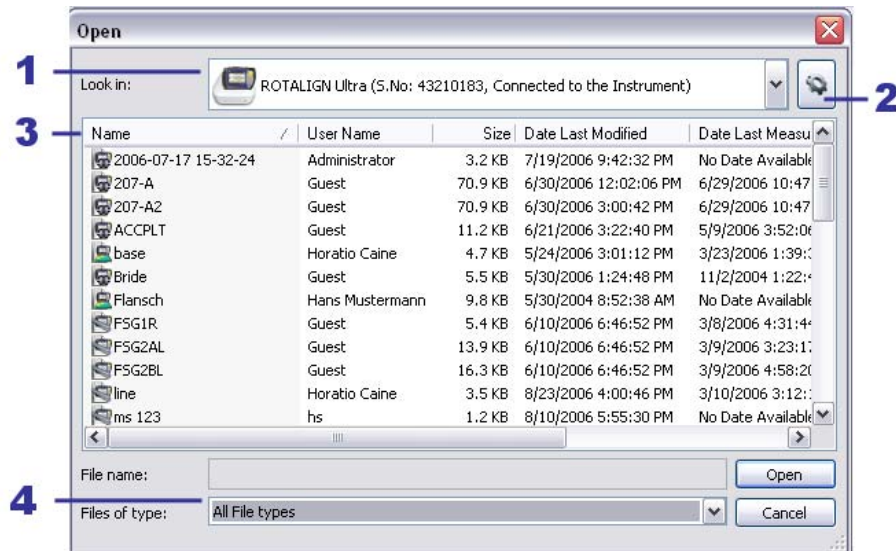
The following section describes the Steps necessary to print a measurement report.

- [Open measurement file](#)
- [Print measurement file](#)

4.1.1. Opening a measurement file Measurement files can be opened directly from the supported instrument, or from the backup file.

- Click  in the Alignment REPORTER toolbar.
(Alternatively select from the menu bar "File" → Open...)

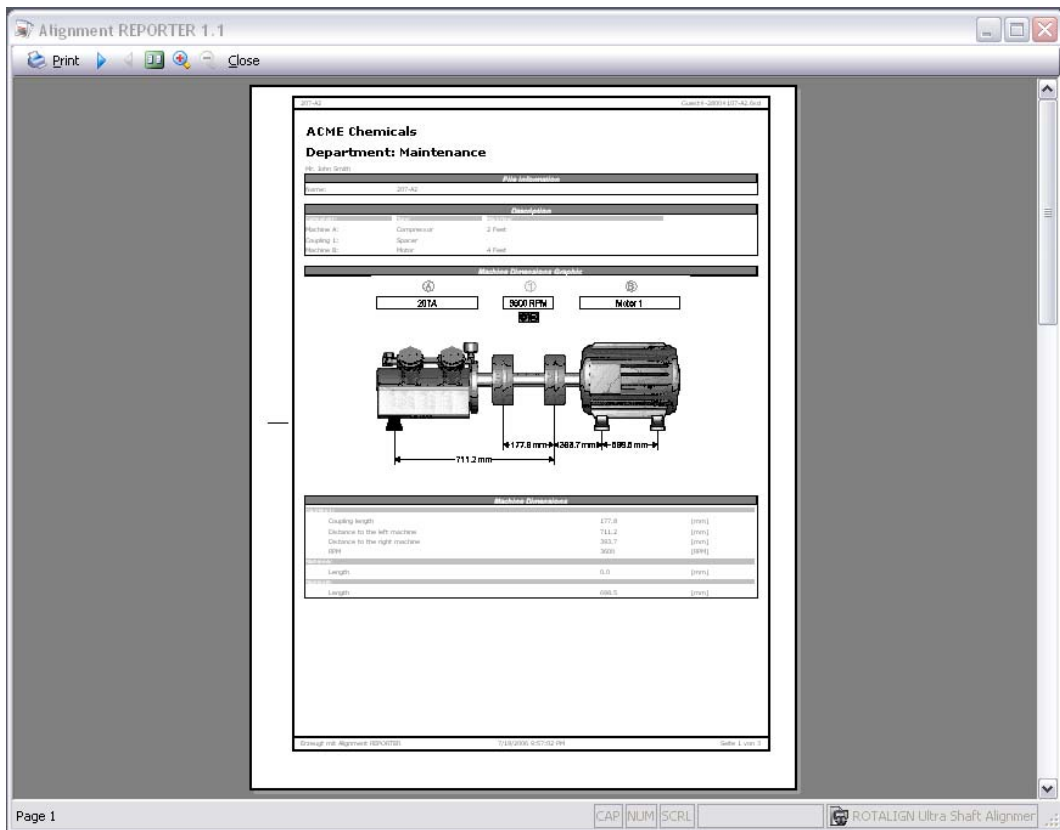
- The "Open" dialog appears.



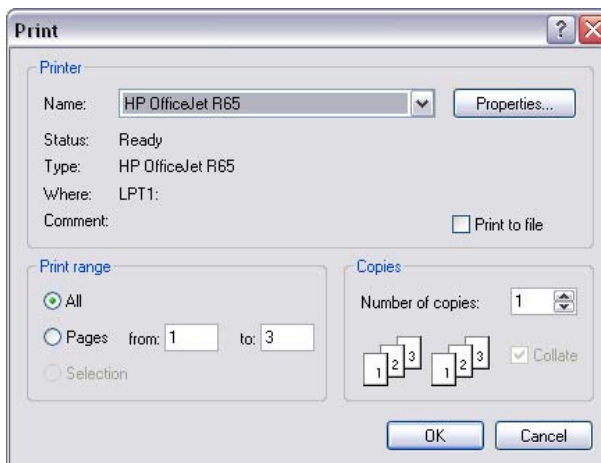
- Use the dropdown menu (1) to select the connected instrument.
All measurement files currently saved in the instrument will appear listed in the "Open" dialog.
The "Options" button (2) may be used to configure the PC serial comm port. This configuration is necessary only by instruments that use the serial comm port for PC communication.
Use the "Type" dropdown menu (3) to select the type of file required.
- Select the required file.
- Click **Open**.
Alternatively double-click on the file name.
The report preview appears.

4.1.2. Printing the report After a measurement file has been successfully opened, the Alignment REPORTER report preview appears.

The preview shows how the report will look like after it is printed.




Selecting "Print" opens the print dialog box where detailed printing options such as "Number of copies" and "Pages" may be selected.



The print function is also available in the opening screen (see section 2 – Introduction) provided a measurement file is open.

4.2. Backup of measurement files

The backup assistant may be used to backup measurement files saved in any supported instrument by the Alignment REPORTER.

- Click  the backup button in the Alignment REPORTER tool bar.
(Alternatively select from the menu bar "File" → "Backup".)

The "Instrument files backup assistant" appears.



Use the dropdown menu (1) to select the connected instrument, paying attention to the hints that appear on the dialog window.

The "Options" button (2) may be used to configure the PC serial comm port. This configuration is necessary only by instruments that use the serial comm port for PC communication.

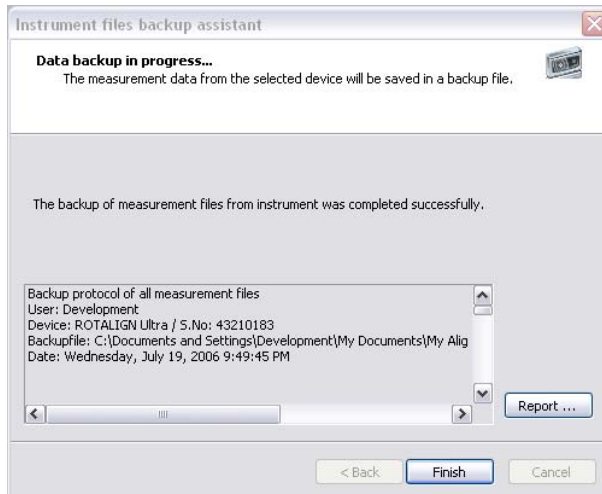
If connection to the instrument is established, the "Next" button becomes active.

If communication is not established, please check the following:

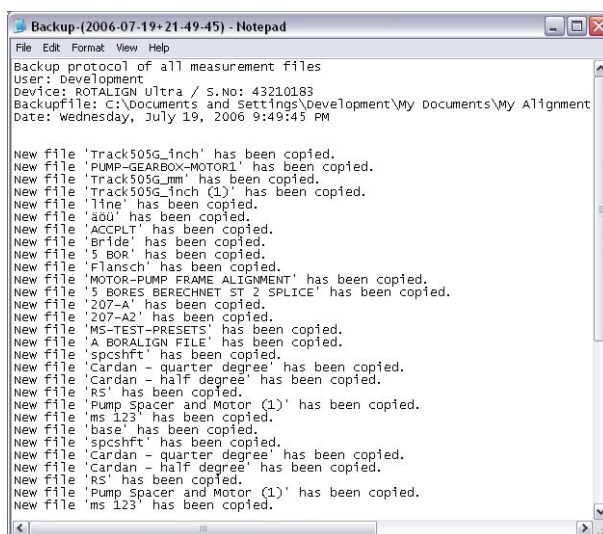
- If the selected instrument is connected to the PC
- If PC communication has been activated where required
- If the serial port is occupied by another program (possibly a mobile phone application) – applicable only to serial interfaces

Click the "Next" button to start the backup process.

After a successful backup a summary of the process appears.



The "Report" button opens the Windows Text Editor which may be used to view or save the backup summary.




4.3. Printing a measurement report from a backup file

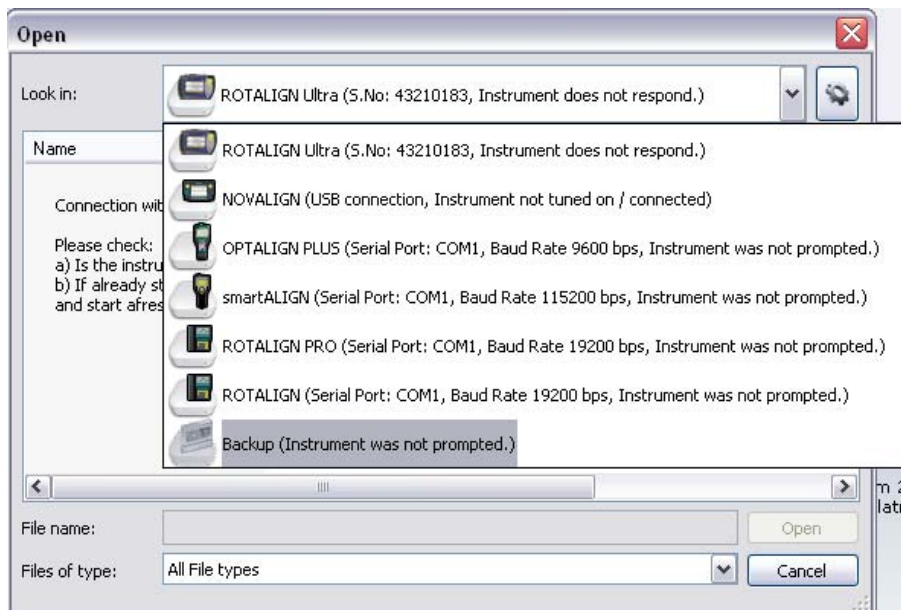
The Alignment REPORTER is used to print measurement reports either directly from the instrument or from a backup archive.

How to create a backup archive is described under "[Backup of measurement files](#)".

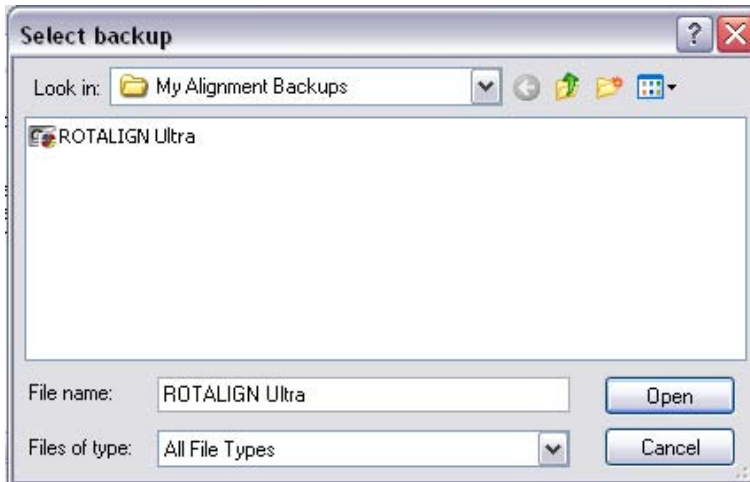
To print a report proceed as follows:

- 
 Click **Open** in the Alignment REPORTER tool bar.
 (Alternatively select from the menu bar "File" → Open...)

The "Open" dialog appears. Use the dropdown menu to select backup archive.

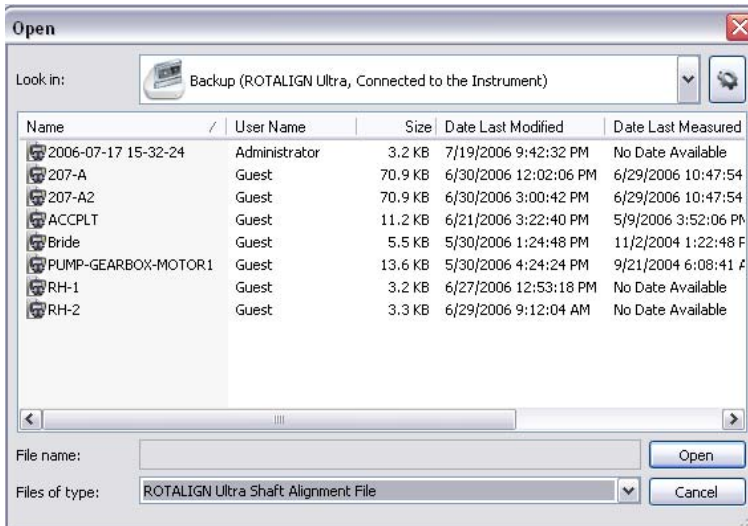


Select the required backup file, in this case the ROTALIGN Ultra backup file has been selected.



Backup archive files generated using the Alignment REPORTER have the extension .ACBackup

Click open to show the content of the selected archive.



- Select a file.
- Click **Open**.

Alternatively double-click on the file name.

The report preview appears.

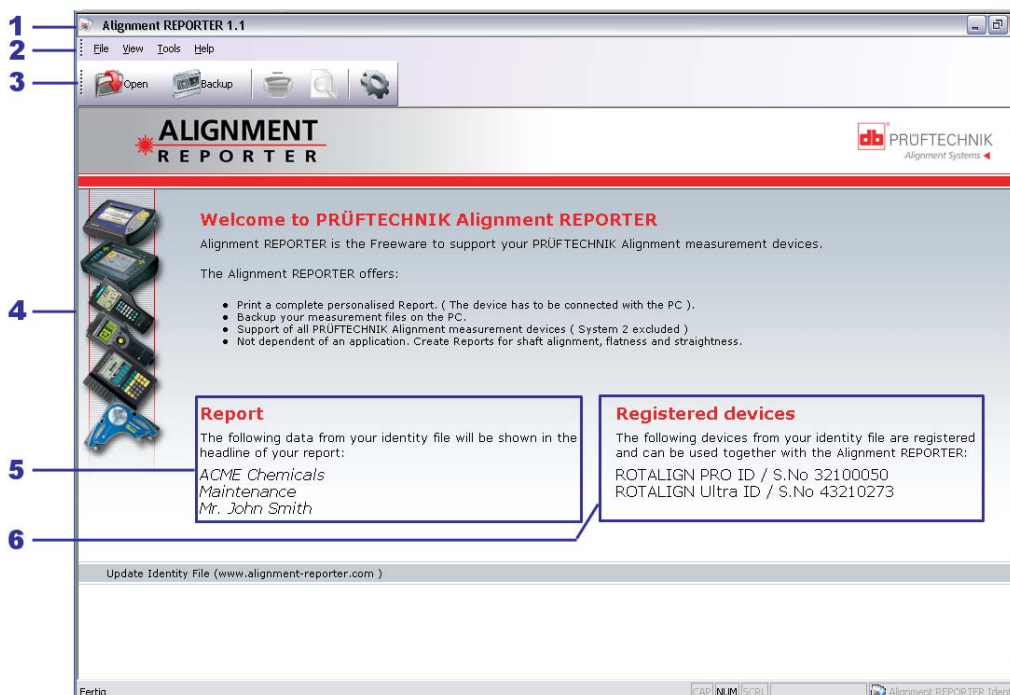
5. Overview of the work area

The Alignment REPORTER provides two working views; the "Welcome" view and the "Report preview" view.

- [Welcome view](#)
- [Report preview](#)
- [Menu bar](#)
- [Toolbar](#)

5.1. Welcome view

The "Welcome" view appears as shown below. The labelled view items are described below.

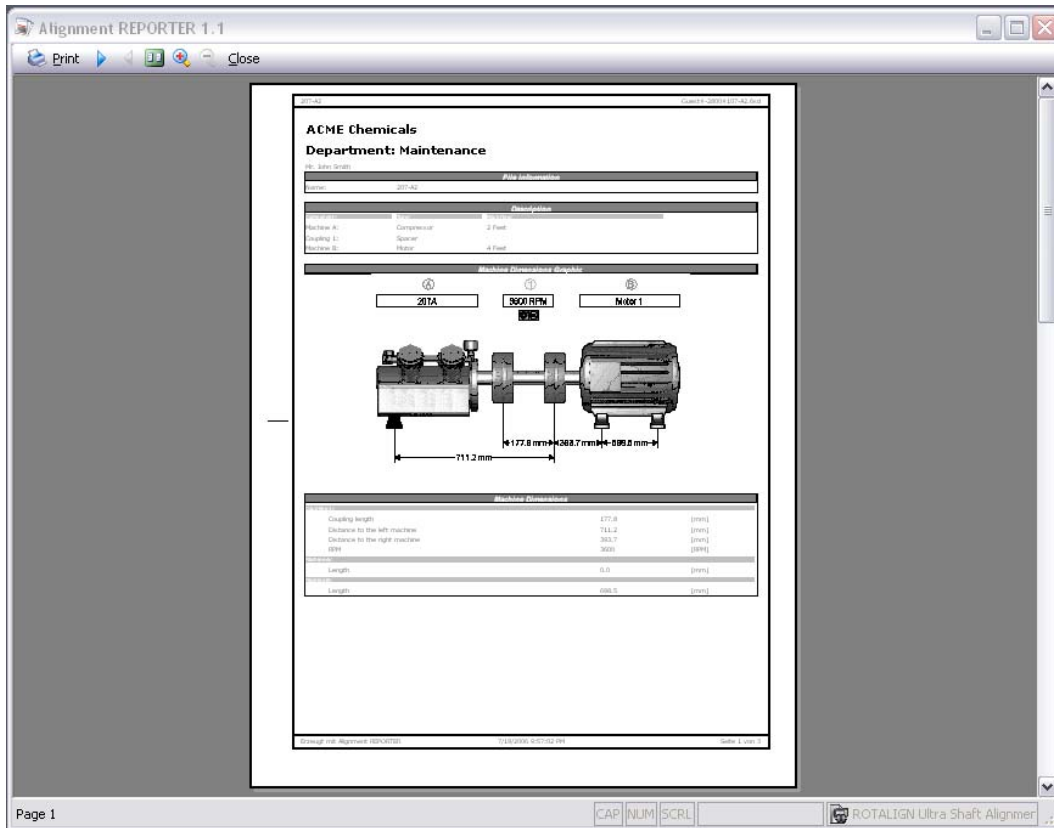


- 1 **Titel bar:** The title bar incorporates the name of the file opened file and the version of the Alignment REPORTER.
- 2 **Menu bar:** The horizontal menu area associated with dropdown menus. The majority of functions can be executed via these menu items.
- 3 **Toolbar:** A block of buttons that when clicked activate certain functions of the Alignment REPORTER. (Refer to the toolbar section).

- 4 **Ansicht:** The pane with information about the Alignment REPORTER.
- 5 **Measurement report:** The information appearing in this area is meant for the customization of measurement reports, and will appear at the top of every printed report.
- 6 **Registered devices:** Devices registered for use with the Alignment REPORTER are listed under this section.

5.2. Report preview

The report preview shows how the report will look like after it is printed. The preview is only active after a measurement file has been opened.







The measurement report may be printed using the **Toolbar** "Print" button.

5.3. Menu bar

The menu bar is available exclusively in the "Welcome" view. Most of the Alignment REPORTER functions can be executed from the menu bar and its corresponding dropdown menus. The active menu items are dependent on the current state of the program. (E.g. If no measurement file is currently opened, then the 'Print' and 'Print preview' menu items are greyed out.)

- Dropdown menu: File
- Dropdown menu: View
- Dropdown menu: Tools
- Dropdown menu: Help


5.3.1.1. Dropdown menu: File

Menu item	Description	Icon
Open...	Used to open a measurement file from an instrument or a database or a backup file. See 'Opening a measurement file'.	
Backup...	Prompts the 'Instrument files backup assistant'. The assistant is used to backup measurement files from the selected instrument. See 'Backup of measurement files'.	
Page set-up ...	Used to select and set-up printer, page orientation and paper size.	
Print...	Used to print the active report on the selected printer.	
Print preview...	Used to open the report view.	
Exit	Used to close the Alignment REPORTER.	

5.3.1.2. Dropdown menu: View

Menu item	Description	Icon
Tool bar	This menu item is used to hide or display the tool bar. Check or clear the tool bar box to display or hide the tool bar. <input checked="" type="checkbox"/> Displays tool bar	
Status bar	The status bar appears at the bottom of the window and can be hidden or displayed using this menu item. Check or clear the status bar box to display or hide the status bar. <input checked="" type="checkbox"/> Displays status bar	
Refresh	Use menu item to refresh the welcome screen.	

5.3.1.3. Dropdown menu: Tools

Menu item	Description	Icon
Options	Opens the application settings	






5.3.1.4. Dropdown menu: Help

Menu item	Description	Icon
PRÜFTECHNIK on the Web	Used to access the PRÜFTECHNIK website or send an e-mail message to PRÜFTECHNIK. Simply click the required menu item.	
About...	Gives information related to the Alignment REPORTER. See 'Support'.	

5.4. Tool bar – Welcome screen

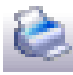





The tool bar consists of buttons that provide quick and convenient access to different commands.

The tool bar can be hidden or repositioned.

	Name	Function
	Open...	Open measurement file either from instrument or from the backup file
	Backup	Prompt the backup assistant
	Print...	Print the measurement report
	Print preview	Open the report preview
	Options...	Open application settings

5.5. Tool bar – Report view

The report view tool bar consists of buttons that simplify the printing and previewing of measurement reports.

	Name	Function
	Print	Prints the active measurement report. The print dialog appears.
	Next page	Goes to the next page of the report
	Previous page	Goes to the previous page of the report
	Pages displayed	Toggles page display between one and two pages
	Zoom in	Zooms in to get a closer view
	Zoom out	Zooms out reducing the view
	Close	Closes the report view

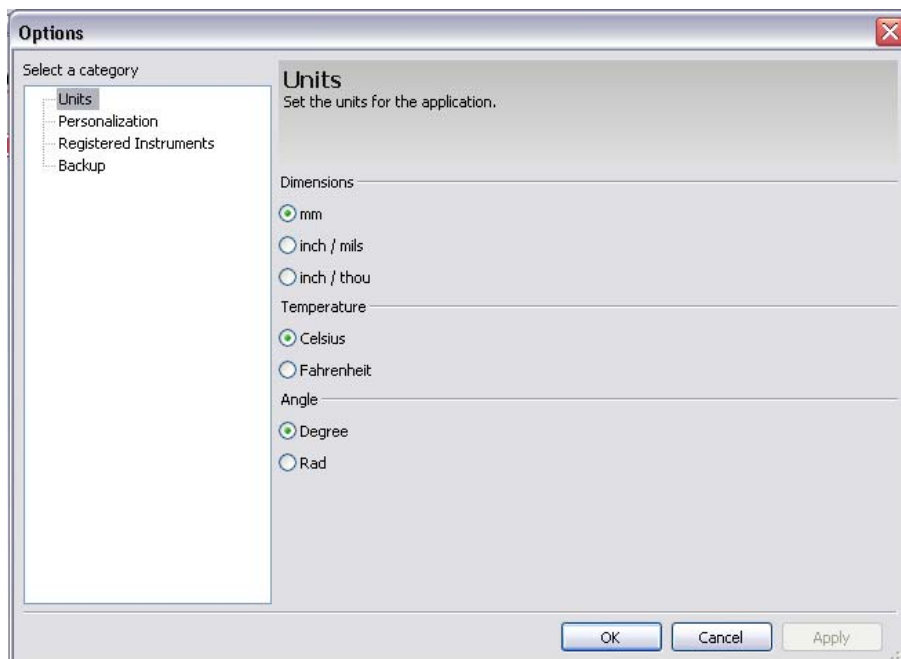
5.6. Settings options

The settings of the Alignment REPORTER may be implemented using the 'Options' window. The following available options are described below.

- Units
- Personalizing
- Registered instruments
- Backup archive
- Settings of the serial port

5.6.1. Units

The measurement units to be used on the report are set using the 'Options' window.



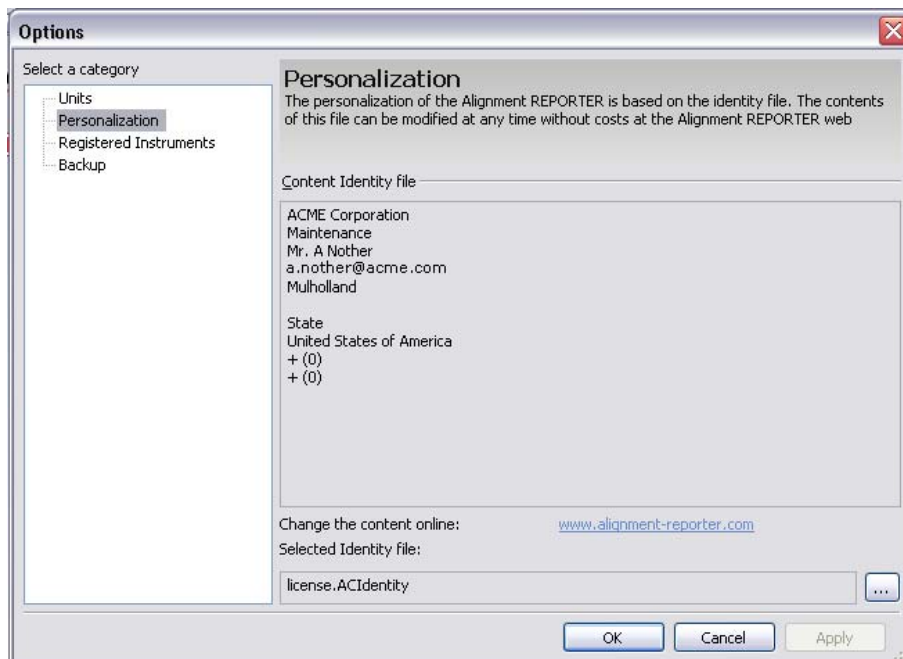
Dimensions: Offers selection between mm, inch/mils and inch/thou.

Temperatur: Offers selection between degrees Celsius and degrees Fahrenheit.

Winkel: Offers selection between angle degrees and radians.

5.6.2. Personalizing

The 'Personalization' options window shows the current personal registration information as appearing in the identity file. This window may also be used to load an identity file.

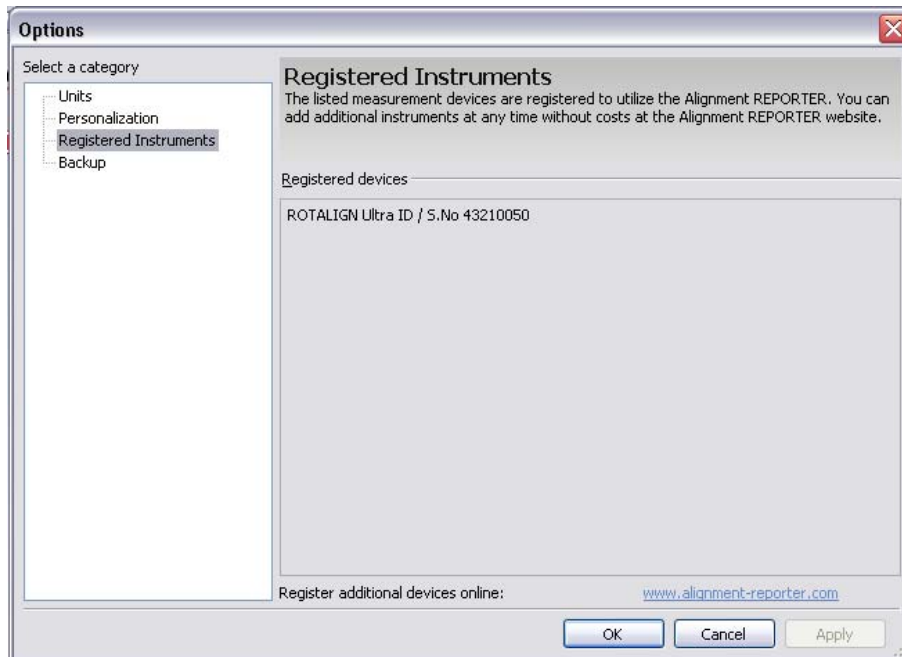


Loading an identity file: Click the button '...' and navigate to the directory where the identity file is stored in a Windows file system. The dialog window that opens supports exclusively Alignment REPORTER identity files. Select identity file to be loaded and then confirm by clicking 'Open'.

This personal information can be changed at any time using www.alignment-reporter.com.

5.6.3. Registered instruments

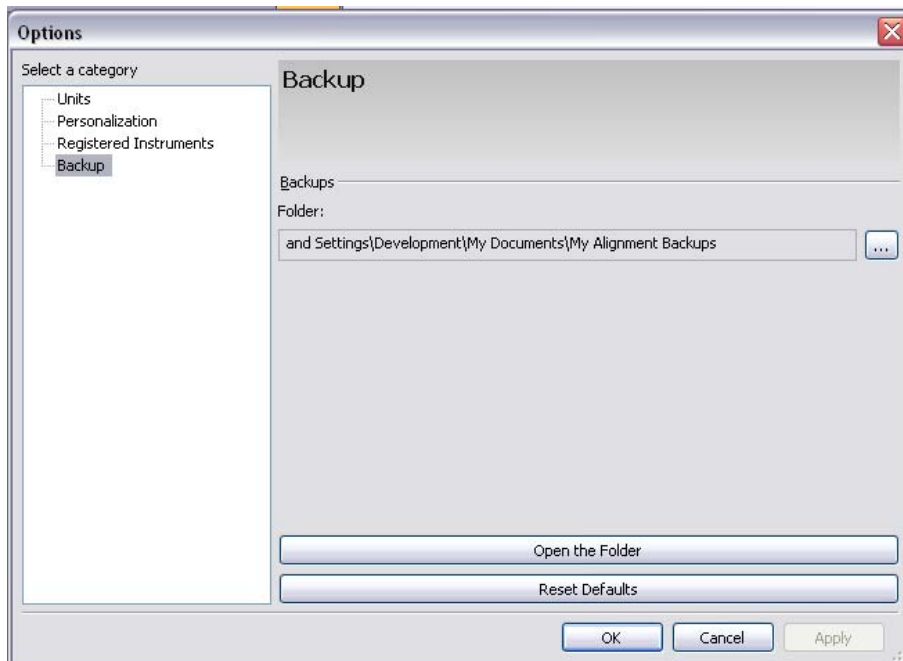
The 'Registered instruments' options window shows the instruments registered for use with the Alignment REPORTER.



Additional instruments can always be registered online at www.alignment-reporter.com.

5.6.4. Backup archive

The 'Backup archive' options window shows the location in the Windows file system, where the backup files from the instrument measurement files have been stored.



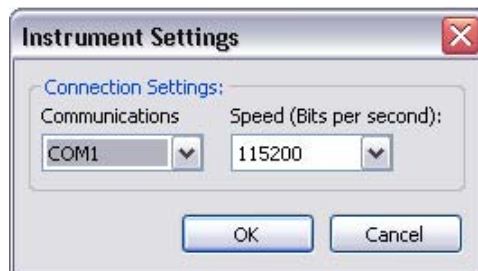
The default backup location is 'My Documents' / 'My Alignment Backups'.

The button 'Open the Folder' is used to open a window in Windows Explorer showing all available backup files.

The button 'Reset Defaults' is used to return the backup file location to the default location 'My Documents' / 'My Alignment Backups'.

5.6.5. Settings of the serial port

Dependent on the instrument selected, it could be necessary to adjust the port settings. The 'Instrument Settings' dialog may be accessed from the 'Instrument files backup assistant' window using the 'Options' button.



Use the Communications dropdown menu to select a COM port that is available on your PC.

Use the 'bits per second' dropdown menu to select the rate of data transmission between the instrument and the PC. The preset speed will in most cases be correct and should therefore not be adjusted.

6. PC communication

Alignment REPORTER supports most PRÜFTECHNIK Alignment measurement instruments and their related applications. Depending on the instrument in use, PC communication is activated either on the instrument itself, or the necessary USB driver must be installed in the PC. Important hints related to installation of USB drivers is given at the end of the installation.

Below is a comprehensive summary of the settings and preparations for all supported instruments.



Please note:

To be able to open measurement files from any one of the listed instruments, the instrument must be listed in the identity file, otherwise, communication cannot be established.

How an instrument can be listed in an identity file is described in the section 'Installing the Alignment REPORTER'.

This section describes the settings for the following instruments:

- [ROTALIGN Ultra](#)
- [ROTALIGN PRO](#)
- [ROTALIGN](#)
- [NOVALIGN](#)
- [OPTALIGN PLUS / Series](#)
- [smartALIGN](#)



Please note:

If you connect your instrument while either the 'Open' dialog or the backup assistant is open, it might occur that your instrument remains unidentified. In this case, either press the F5 key or close the 'Open' dialog. The instrument should now be identified when the 'Open' dialog restarts.

6.1. ROTALIGN Ultra (USB interface)

ROTALIGN Ultra uses a USB interface to connect to a PC. The interface is USB 1.1, meaning that all available USB interfaces on the PC may be used.

To use ROTALIGN Ultra with Alignment REPORTER, proceed as follows:

Ensure that the USB driver has been installed. Refer to [USB driver installation](#). This description also appears in an information window after the software installation has been completed.

On instrument side:

Connect ROTALIGN Ultra to a PC using the ROTALIGN Ultra USB cable ALI 4.502-2.

Switch ROTALIGN Ultra on. While in Program Manager select 'Configuration' / 'PC communication'. Highlight any user directory and then press 'Enter'. The instrument is then automatically identified on the PC side.

6.2. ROTALIGN PRO (RS-232 serial interface)

To use ROTALIGN PRO with Alignment REPORTER, proceed as follows:

On instrument side:

Connect ROTALIGN PRO to an RS-232 serial interface on the PC using the PC cable SYS 2.711-2. You may use the adapter ALI. 3.264 (9-to-25 pin) if connecting to a 25-pin interface.

Switch ROTALIGN PRO on. Ensure that in 'Device configuration', 'serial interface' is selected.



Activate PC communication by selecting the above shown icon. This icon is accessed by pressing the "More.." softkey.

On the PC side:

The instrument is then automatically identified on the PC side.

If instrument fails to be identified, change the serial interface being used. The change is made in the 'Instrument Settings' dialog, which is accessed from the 'Instrument files backup assistant' window. After making the change, press the F5 key to prompt the new interface to search ROTALIGN PRO.

6.3. ROTALIGN (RS-232 serial interface)

To use ROTALIGN with Alignment REPORTER, proceed as follows:

On instrument side:

Connect ROTALIGN to an RS-232 serial interface on the PC using the PC cable SYS 2.711-2. You may use the adapter ALI. 3.264 (9-to-25 pin) if connecting to a 25-pin interface.

Switch ROTALIGN on. Ensure that in 'Device configuration', 'serial interface' is selected. Start PC communication via 'Menu'.

If using the ROTALIGN application in ROTALIGN PRO, activate PC communication using the PC-Comm icon and proceed as described in the previous section.

On the PC side:

The instrument is then automatically identified on the PC side.

If instrument fails to be identified, change the serial interface being used. The change is made in the 'Instrument Settings' dialog, which is accessed from the 'Instrument files backup assistant' window. After making the change, press the F5 key to prompt the new interface to search ROTALIGN.

6.4. NOVALIGN (USB interface)

NOVALIGN uses a USB interface to connect to a PC. The interface is USB 1.1, meaning that all available USB interfaces on the PC may be used.

To use NOVALIGN with Alignment REPORTER, proceed as follows:

Ensure that the USB driver has been installed. Refer to [USB driver installation](#). This description also appears in an information window after the software installation has been completed.

On instrument side:

Connect NOVALIGN to a PC using the NOVALIGN USB cable SYS 3.521-2.

Switch NOVALIGN on. While in Program Manager select 'PC communication'. Highlight any user directory and then press 'Enter'. The instrument is then automatically identified on the PC side.

The instrument is then automatically identified on the PC side.

6.5. OPTALIGN PLUS / Series (RS-232 serial interface)

To use OPTALIGN PLUS Series with Alignment REPORTER proceed as follows:

On instrument side:

With the transducer connected to the control unit, connect OPTALIGN PLUS Series to an RS-232 serial interface on the PC using the PC cable ALI 5.222. If using an earlier version PC cable ALI 5.221 you need a 9-to-25 pin adapter.

Switch OPTALIGN PLUS Series on. Press the F key followed by '00' to activate PC communication.

On the PC side:

The instrument is then automatically identified on the PC side.

If instrument fails to be identified, change the serial interface being used. The change is made in the 'Instrument Settings' dialog, which is accessed from the 'Instrument files backup assistant' window. After making the change, press the F5 key to prompt the new interface to search OPTALIGN PLUS Series.

6.6. smartALIGN (RS-232 serial interface)

To use smartALIGN with Alignment REPORTER proceed as follows:

On instrument side:

Connect smartALIGN to an RS-232 serial interface on the PC using the PC/printer cable ALI 7.511-2 and the 9-to-25 pin adapter ALI 3.265.

Switch smartALIGN on.

On the PC side:

The instrument is then automatically identified on the PC side.

If instrument fails to be identified, change the serial interface being used. The change is made in the 'Instrument Settings' dialog, which is accessed from the 'Instrument files backup assistant' window. After making the change, press the F5 key to prompt the new interface to search smartALIGN.

6.7. Installing the USB driver

The USB drivers are pre-loaded during the installation of Alignment REPORTER. After installation is completed, a window appears that describes how to complete the installation of the USB driver. The instructions appearing on the window are given below.

The difference in driver installation between **Windows 2000/XP** and **Windows 98** must be noted.

6.7.1. ROTALIGN Ultra / NOVALIGN on Windows 2000/XP:

a) Connect instrument to the PC

Switch your instrument on. For instrument connection to the PC use the respective supplied cable.

ROTAGLIGN Ultra: USB cable ALI 4.502-2

NOVALIGN: USB cable SYS 3.521-2

b) Activating USB driver installation

In ROTALIGN Ultra activation starts automatically after step (a).

In NOVALIGN select 'PC communication' followed by any arbitrary user and then select 'Start communication'.

c) USB driver installation

Windows identifies the new hardware and starts the 'New Hardware Assistant'.

If carrying out a NOVALIGN installation the name ROTALIGN Ultra in the dialog text should be replaced by NOVALIGN.

Follow the wizard instructions as shown below.

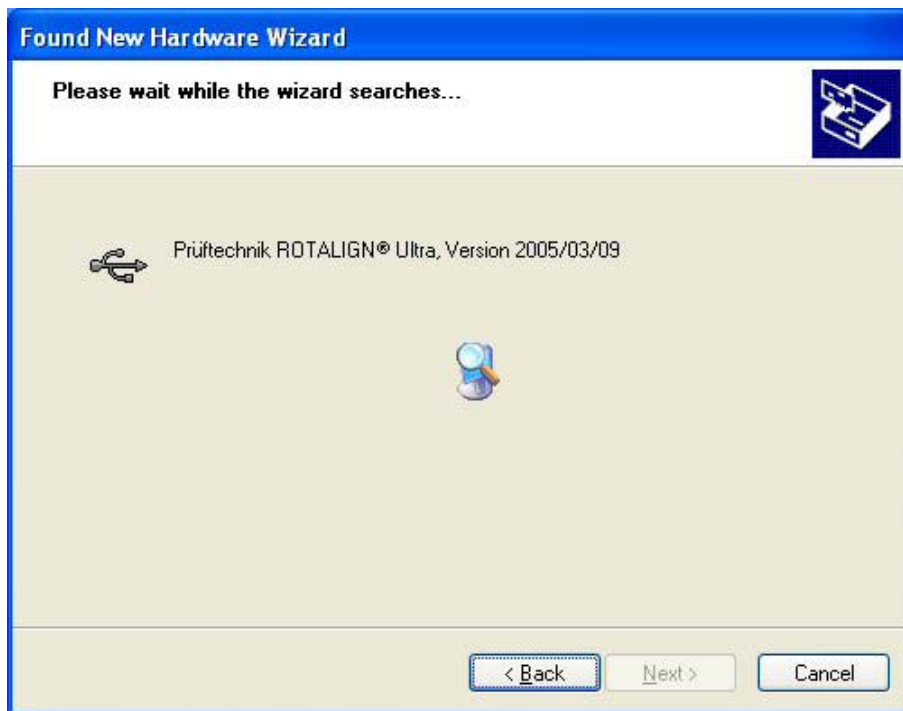
(Note: The first screen only appears if the computer is connected to the internet.)



Click 'Next'



Click 'Next'



Click 'Finish' to close the wizard.

6.7.2. ROTALIGN Ultra / NOVALIGN on Windows 98:

a) Connect instrument to the PC

Switch your instrument on. For instrument connection to the PC use the respective supplied cable.

ROTALIGN Ultra: USB cable ALI 4.502-2

NOVALIGN: USB cable SYS 3.521-2

b) Activating USB driver installation

In ROTALIGN Ultra activation starts automatically after step (a).

In NOVALIGN select 'PC communication' followed by any arbitrary user and then select 'Start communication'.

c) USB driver installation

Windows identifies the new hardware and starts the 'New Hardware Assistant'.

If carrying out a NOVALIGN installation the name ROTALIGN Ultra in the dialog text should be replaced by NOVALIGN.

Follow the wizard instructions as shown below.



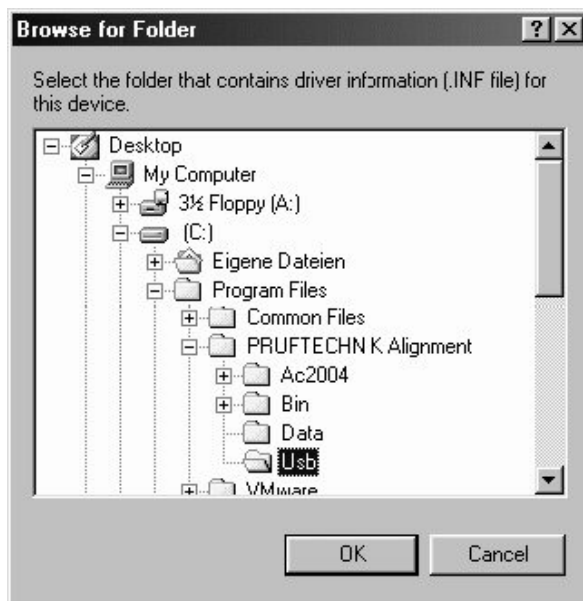
Click 'Next'



Click 'Next'



Check the box next to 'Specify a location', and then click the 'Browse' button. The 'Browse for Folder' dialog window opens.



Navigate to the location where the USB drivers were extracted and click the USB folder. In a standard installation, the default directory is 'Programme/PRUFTECHNIK Alignment/USB'.

Click 'OK' to confirm.

Proceed to confirm the windows that consequently appear by clicking 'Next'. The wizard is closed after installation is completed by clicking 'Finish'.

The USB driver has now been installed.

7. General information Alignment REPORTER

7.1. Support

7.1.1. To access product information from the PRÜFTECHNIK website

To use this facility, the PC must be connected to a working internet connection.

1. From the menu bar click 'Help' → **PRÜFTECHNIK on the Web.**
2. On the dropdown menu that appears, select the required item.

The standard browser opens showing the selected item.

7.1.2. To contact PRÜFTECHNIK

7.1.2.1. Sending an e-mail to PRÜFTECHNIK

1. From the menu bar click 'Help' → **About**
2. From the 'About' window that appears, depending on the issue, click either **Additional sales information** or **Technical support.**

Your e-mail program will open automatically with the addressee already assigned. To use this facility, the PC must be connected to a working internet connection.

7.1.2.2. To post a message on the PRÜFTECHNIK contact page

1. From the menu bar click 'Help' → **PRÜFTECHNIK on the Web.**
2. On the dropdown menu that appears, select **Drop us aline!**

The standard browser opens showing the contact page.

Index

A

Alignment REPORTER	
CD	8
einrichten	8

B

Backup archive	27
Backup file	
print	16

C

Concept	7
Creating an account	9

D

Dropdown menu	
file21	
help	22
tools	22
view	22

G

General information	39
---------------------------	----

I

Identity file	10
Installation USB Treiber	33
Installation Windows Software	8
Installing the software	8

M

Measurement file	
backup	14
open	11
Measurement report	
print	13
Menu bar	21

O

Overview	5
----------------	---

P

PC communication	29
NOALIGN	31
OPTALIGN PLUS Series	31
ROTALIGN	30
ROTALIGN PRO	30
ROTALIGN Ultra	29
smartALIGN	32
PRÜFTECHNIK im Web	39

R

Registered instruments	26
Report preview	20

S

Serial port	
settings	28
Settings	24
personalizing	25
units	24
Support	39

T

Tool bar	
report view	23
welcome screen	22

U

USB driver	
installation	33
ROTALIGN Ultra	33
Windows 2000/XP	33
Windows 98	36

W

Welcome view..... 18
Work area..... 18
www.alignment-reporter.com 7