



## ALL-NEW PEUGEOT RIFTER

PRICES, EQUIPMENT AND TECHNICAL SPECIFICATIONS

Version 2 - August 2018

Model Year - 2018.5





Model shown is new PEUGEOT Rifter GT Line with optional Sunset Copper paint

All-new PEUGEOT Rifter models come with the following equipment as standard:

#### Body Style

- Standard (5 seats)
- Long (7 seats)

#### Safety and Security

- ABS (Anti-lock Braking System) with EBD (Electronic Braking Distribution) and EBA (Emergency Braking Assistance)
- Airbags: Adaptive driver and front passenger airbags (includes passenger airbag deactivation function)
- Airbags: Driver and front passenger side airbag
- Airbags: Front and rear curtain airbags
- Automatic door locking when moving off
- Automatic hazard light activation upon heavy brake application
- Child locking functionality on rear doors
- Deadlocking
- Electronic code immobiliser
- ESP (Electronic Stability Program) with Hill start assist
- Safety Pack: Lane Keeping Assist, Speed limit recognition and recommendation and Active Safety Brake
- Front optimised safety headrests and rear retractable headrests (x3)
- Front three-point retractable seatbelts, with force limiters
- Front and rear disc brakes
- Gear Shift Indicator
- Headlights left on audible warning
- Isofix child seat fittings (x3) in the second row
- Programmable cruise control and speed limiter
- Seatbelt unfastened on the move audible and visual alert for front and rear seats
- Steel spare wheel
- Tyre pressure sensors

#### Comfort and Convenience

- Electric and heated door mirrors
- Electric power steering with reach- and rake-adjustable steering column
- Front interior light with reading spotlights (x2) and rear interior light with timer
- Front windscreen wiper with multi-speed setting
- Heated rear windscreen & wiper blade
- Multifunction trip computer
- Electric front windows
- PEUGEOT i-Cockpit®: compact steering wheel
- PEUGEOT i-Cockpit®: Head-up instrument panel
- Rear windscreen wiper triggered automatically in reverse gear
- Remote central locking (two remotes)
- Fixing rings (x4), in load area

#### Interior Features

- Leather Steering wheel
- Seating: 2 independent and removable sliding 3 row seat (Long versions only)
- 2 heights parcel shelf (Standard versions only)
- Retractable parcel shelf (Long versions only)
- Row 2 underfloor storage compartments
- Upper glove compartment
- Full width front overhead storage shelf
- Driver and Passenger dashboard mounted cup holders

#### In Car Entertainment

- Bluetooth® telephone facility
- DAB Radio (Digital Audio Broadcasting)
- USB socket
- 6-Speaker radio, MP3 compatible
- 12 V socket

#### Exterior Features

- Contrasting wheel arch trim
- Body-colour exterior door handles
- Two sliding side doors

#### Exterior Lighting and Visibility

- Rear LED PEUGEOT signature 'Claw Effect' lights
- Front fog lights with cornering function
- Visibility pack: automatic lights
- Visibility pack: automatic MagicWash® windscreen wipers
- Visibility pack: electrochrom rear view mirror (auto dimming)
- Visibility pack: 'follow me home headlamps'



Model shown is new PEUGEOT Rifter GT Line with optional Sunset Copper paint





**ACTIVE** With the perfect balance of character and strength, Active is the perfect place to start your journey

#### Comfort and Convenience

- Air conditioning (manual)

#### Interior Features

- Adamantium interior ambience
- Seating trim: 'Enigmatic' cloth seat trim with overstitch detail
- Seating: Height adjustable driver seat
- Seating: -1/3 - 2/3 folding rear seat (2 row)
- Pop-out opening rear side windows

#### Exterior Features

- Radiator grille: 3D stamped effect and chrome surround
- Body-colour door mirrors
- Aluminium roof bars
- Black front bumper with coloured inserts
- 16" Steel Wheel with 'Rakiura' wheel trim
- Door sill protectors



**ALLURE** With added style and specification, enjoy the ultimate in understated luxury

#### Active specification +

#### Comfort and Convenience

- Air-vents in 2nd row with USB socket
- Electric parking brake
- Electric rear windows
- Parking sensors - rear

#### Interior Features

- Picasso blue interior ambience
- Seating trim: 'Puma' cloth seat trim with blue overstitch detail
- Seating: Height adjustable driver seat with adjustable lumbar support, under-seat storage and elbow rest
- Seating: Foldable passenger seat with under-seat storage and elbow rest
- Seating: Tray tables at the back of the front seats
- High console between front seats with storage compartment

#### In Car Entertainment

- PEUGEOT i-Cockpit®: 8.0" capacitive touchscreen
- Mirror Screen®: (Apple CarPlay™, Android Auto and MirrorLink®)
- USB socket at the back
- Voice recognition (radio, navigation and telephony) linked to Mirror Screen® features)

#### Exterior Features

- 16" 'Taranaki' Alloy Wheel
- Body coloured front bumper

#### Exterior Lighting and Visibility

- Halogen headlights
- LED daytime running lights built into the headlamp unit





**GT LINE** The best of all worlds, sports styling combined with outstanding levels of efficiency and specification.

#### Allure specification +

##### Comfort and Convenience

- Automatic dual zone climate control
- Air-vents in 2nd row with fan strength command and USB Socket
- PEUGEOT Open and Go (keyless entry and push button start)
- Power folding door mirrors
- Dark tinted rear side and tailgate windows
- Opening tailgate window

##### Interior Features

- Quente Brown interior ambiance
- Seating trim: 'Casual' cloth seat trim with overstitch detail
- Seating: 3 independent rear seat (2 row) with "Magic Flat" modularity with controls accessible from the boot
- Zenith Roof®: Cielo panoramic roof with electric interior blind (Standard versions only)
- Zenith Roof®: Floating translucent roof arch with background lighting and storage (Standard versions only)
- Zenith Roof®: Rear storage roof case accessible from the 2nd row and the boot (Standard versions only)

##### In Car Entertainment

- Connected 3D Navigation: includes TomTom® Live updates (3 year subscription)
- PEUGEOT Connect SOS and assistance

##### Exterior Features

- 17" 'Aoraki' Alloy Wheel (16" 'Taranaki' Alloy wheel if Advanced Grip Control® option selected)
- Door sill protectors with gloss black inserts
- Radiator grille: 3D stamped effect and black surround
- Gloss black door mirrors
- 'GT Line' emblems (front wings and tailgate)
- Front and rear scuff plates
- Gloss Black roof bars (Aluminium on Long versions)



## PEUGEOT i-Cockpit®

### PEUGEOT i-Cockpit®:

Since launching in 2012, PEUGEOT i-Cockpit® has re-written the rule book for car interior architecture. The PEUGEOT i-Cockpit® philosophy centres around a driving environment that puts you in control, allowing a greater connection to the road. For all-new PEUGEOT Rifter, the PEUGEOT i-Cockpit® helps to make driving more instinctive.

The PEUGEOT i-Cockpit®, comprises of the following key features:

#### Head-up instrument panel:

Available as standard across the all-new PEUGEOT Rifter range, the raised instrument panel increases driver comfort and safety. As the panel is positioned higher, it is closer to the road and is more within the driver's field of vision. This can increase safety when compared to a conventional setup where the dials sit within the wheel, further from the road.

Sitting comfortably between the dials is an LCD screen complete with white graphics. Designed to relay key information to the driver the screen can display key data including, digital speed read out, satellite navigation directions and fuel economy data.

#### Compact multi-function steering wheel:

Compact dimensions coupled with a re-designed shape enhance every journey in the all-new PEUGEOT Rifter. Out on the road the compact dimensions increase the visibility of the cars instruments whilst in the corners it provides heightened responses and improved agility.

When it comes to round town or navigating car parks its compact size make light work of wheel winding to manoeuvre into a space. In terms of finish, all models have a steering wheel trimmed with Mistral full-grain leather and stitch detail. Sports models benefit further from contrasting stitching, perforation detail and a satin chrome model designation badge

#### 8.0" capacitive touchscreen (Allure versions upwards):

With crystal clear graphics, the 8.0" capacitive touchscreen houses several key technological features on the all-new PEUGEOT Rifter. Capacitive technology helps to give Smartphone levels of responsiveness. In-keeping with the PEUGEOT i-Cockpit® theme, the touchscreen is angled towards the driver.

For greater accessibility the touchscreen includes access keys around the outside of the screen display, these enable direct access to the wealth of functionality available.

Features accessed via the touch-screen include:

- DAB Radio (Digital Audio Broadcasting)
- Mirror Screen®: (Apple CarPlay™, Android Auto and Mirrorlink®)
- 3D satellite navigation\* (includes TomTom® Live updates ) and PEUGEOT Connect and SOS\*

\*Depending on versions



Head-Up Instrument Panel



Compact Multifunction Steering Wheel



8.0" Capacitive Touchscreen





## Automatic Emergency Braking System (AEBS2)

### Automatic Emergency Braking System (AEBS2):

An intelligent autonomous braking system designed to avoid a collision or limit its severity by reducing the vehicle's speed. The system is triggered if the driver does not react quickly enough, by activating the vehicle's brakes. A multifunction camera located at the top of the windscreen coupled with a bumper mounted radar are able to detect obstructions on the road. The system is able to detect vehicles that are moving in the same direction or are at a stop, together with pedestrians in the road.

### Distance Alert System:

Working in conjunction with the AEBS2 system, the distance alert function warns the driver if the vehicle risks a collision with the vehicle in front or a pedestrian in the road. Two levels of warning are available; the first 'Amber' warning provides a visual alert to the potential risk. In a more severe instance a 'Red' visual and audible alert indicate a collision is imminent and driver action is required, failure to act triggers the AEBS2 system.

## Trailer Sway Mitigation System (TSM)

### Trailer Sway Mitigation System:

Optional tow bar includes Trailer Sway Mitigation System (TSM) .

TSM brings in an additional ESP® function which reduces the vibrations of the trailer or, if necessary, slows the vehicle. Vibrations are reduced via individual and alternated braking manoeuvres on the front wheels. In most cases, these manoeuvres are sufficient to completely eliminate the vibrations and thereby averting all danger. Should the vibrations be very strong, then the system reduces the engine torque and applies brakes on all four wheels to reduce the speed as quickly as possible.

TSM operates at speeds between 40 and 100 mph.

TSM detects the trailer once the trailer's electric connector is hooked up to the towing vehicle.

## Driver Attention Alert

### Driver Attention Alert 3 (DAA3): (Optional)

it is important to take frequent breaks when travelling over long distances, to better guarantee your safety and the safety of those around you. All-new PEUGEOT Rifter features a timed alert system that operates at speeds in excess of 40mph, after two hours of driving a message is displayed recommending that you take a break.

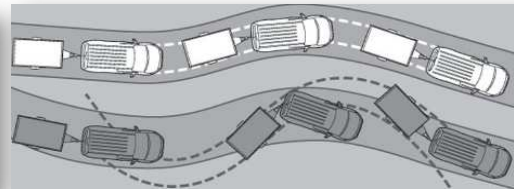
In addition to a timed alert and controlled by a camera at the top of the windscreen designed to analyse the vehicles trajectory, DAA3 evaluates the vigilance of the driver at speeds of over 40mph.

By identifying deviations relative to the road markings all-new PEUGEOT Rifter is able to determine whether the vehicle's behaviour reflects a certain degree of driver drowsiness or inattention. If it is felt that the driver needs to take better care on the road a visual and audible alert will occur. If more than three instances occur, the driver will be advised to take a break.

## Blind Spot Monitoring

### Blind Spot Monitoring: (Optional)

Now you can enjoy the feeling of having eyes in the back of your head. Using lateral ultrasound sensors to cover areas out of your field of vision, an LED illuminates in either side door mirror to alert to the presence of a car, lorry, motorbike or bicycle in your blind spot. The system works when overtaking a slower vehicle or when overtaken by a faster vehicle. This intelligent feature operates from speeds as low as 8mph right up to the National Speed Limit.



## Lane Keeping Technologies

### Lane Keeping Technologies:

All-new PEUGEOT Rifter is always one step ahead. Featuring advanced lane keeping technology, the vehicle is able to identify lines on the road via a windscreen mounted camera. The technology operates in the following ways:

**Lane Departure Warning:** a system that monitors continuous and discontinuous lines and warns the driver if a longitudinal lane marking on the ground is accidentally crossed. If steering deviation is detected, you are alerted by a flashing indicator on the digital instrument panel and an audible signal in the cabin.

**Active Lane Keeping Assistance:** in addition to visually and audibly alerting the driver, all-new PEUGEOT Rifter also features LKA. As soon as the system identifies a risk of accidentally crossing one of the marking lines detected on the ground, the steering is gradually corrected to keep the

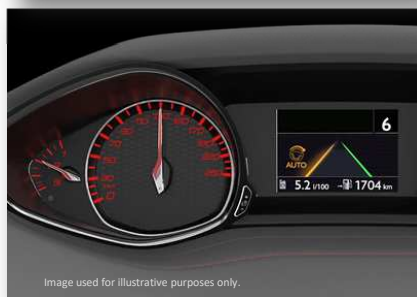


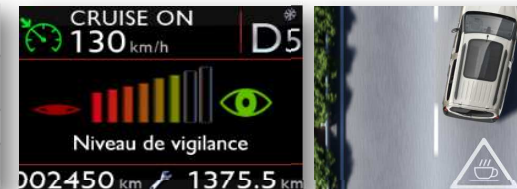
Image used for illustrative purposes only.

## PEUGEOT Connect SOS and Assistance

### PEUGEOT Connect SOS & Assistance: (Optional)

A vehicle locating communication unit, this feature can be used manually (dedicated SOS button on the console) or automatically (if pyrotechnic devices are deployed). It locates the vehicle precisely and triggers the sending of the appropriate emergency services for a rapid response.

PEUGEOT are the pioneers of this technology, since launching in 2003 PEUGEOT Connect SOS & Assistance has assisted over 7,000 individuals. The system is subscription free with no additional charges and uses a GPS module and SIM card (built in to the system).



## Adaptive Cruise Control (ACC Stop / ACC30)

### Adaptive Cruise Control with Stop (ACC Stop): (Optional on automatic versions)

Controlled via a radar mounted at the front of the vehicle with a range of up to 150 metres, the ACC Stop system provides two key functions:

- Automatic maintenance of the vehicles speed, at the value set by the driver.
- Automatic maintenance of a set distance between all-new PEUGEOT Rifter and the vehicle in front, slowing the vehicle to a stop if required.

The system detects a vehicle driving in front in the same direction and can automatically adapt the vehicle's speed to that of the vehicle in front. This occurs using engine braking and the braking system (in which case the brake lights are lit) to maintain a constant distance.

If the vehicle in front has slowed to a stop, all-new PEUGEOT Rifter will also be brought to a stop by the ACC Stop system, if after this no response is received from the driver, the electric parking brake is automatically applied.

### Adaptive Cruise Control with Speed Reduction to 20mph (ACC 30): (Optional on manual versions)

ACC30 works in the same way as ACC Stop to regulate speed and distance. ACC30 can slow all-new PEUGEOT Rifter to a speed of 30km/h, at which point driver input is required to prevent stalling.

\*Not available on 1.5L BlueHDI 100



Image used for illustrative purposes only.

## Speed Limit Recognition

### Speed Limit Recognition and Recommendation: (Optional)

Linked to the safety and safety plus option packs. Using the windscreen mounted camera, all-new PEUGEOT Rifter features speed limit sign recognition, leaving you in no doubt over the speed limit. Upon detecting a speed limit sign this information is read by the camera and displayed in colour on the head-up instrument panel.

In addition to been made aware of the speed the driver also has the option to adapt their speed to the speed limit on the particular road via the vehicles cruise control stalk. The vehicle will then adjust its speed accordingly.



Image used for illustrative purposes only.

## PEUGEOT Smartbeam Assistance

### PEUGEOT Smartbeam Assistance: (Optional)

Linked to the safety plus option packs, PEUGEOT Smartbeam Assistance gives you one less thing to think about when driving at night. Controlled via a windscreen mounted camera, the system continuously analyses driving conditions, for instance the proximity of other vehicles.

PEUGEOT Smartbeam Assistance automatically switches headlamps to full beam when conditions allow, allowing you to tap into the full potential of the halogen headlamps.



Image used for illustrative purposes only.



### Connected 3D Navigation

#### Satellite Navigation: (Standard on GT Line)

Linked to the 8.0" capacitive colour touch screen, the system includes European mapping, 3D city mapping and voice recognition.

The system also includes a 3 year subscription to PEUGEOT Connect allowing a connection to online navigation services (in partnership with TomTom®). Key features of PEUGEOT Connect include:

- **TomTom® Traffic™**: Real-time updates on traffic conditions (traffic jams, road works) and suggested alternative routes.
- **Local Weather**: Displays forecasted weather conditions along the route.
- **Fuel Stations**: Displays nearby fuel stations and pricing.
- **Local search**: Access address and contact detail information for a point of interest\*

\*Additional terms and conditions apply to connected services, including customer acceptance of location sharing prior to activation.

### Visio Park 1

#### 180° Colour Reversing Camera: (Optional)

A camera located on the rear of the vehicle is linked to the 8.0" capacitive colour touchscreen. Offering increased visibility when reversing, with a selection of views to choose from, you'll never look back:

• **Rear Grid View**: a clear view of obstructions to the rear of the vehicle coupled with grid lines oriented to the positioning of the steering wheel, offering perspective for distances of one and two metres respectively from the rear bumper.

• **180° View**: Divides the screen into three zones, offering a clear view of vehicles approaching from the side. Perfect for safely reversing out of parking spaces.

• **Overhead View**: the camera records the surroundings during a manoeuvre to reconstitute an overhead rear view of the vehicle in its immediate environment,



### PEUGEOT Open and Go (keyless entry)

#### PEUGEOT Open and Go: (Standard on GT Line)

Using sensors mounted in the front door handles, all-new PEUGEOT Rifter can be opened without removing the key from your pocket or bag, simply grab the handle and the vehicle will automatically unlock. Once inside a simple press of the stop start button is all that is required.

### Mirror Screen®

#### Mirror Screen®: (Standard from Allure onwards)

Allows the mirroring of a compatible smartphone screen to access the key functionality on the handset. Once paired functions are displayed on the 8.0" capacitive colour touchscreen. System features vary by provider/phone and can include navigation, text display, text reading, media functionality voice control. Mirror Screen® uses the following systems:

- **Apple CarPlay™**
- **Android Auto**
- **MirrorLink®**



\*Please consult [peugeot.co.uk](http://peugeot.co.uk) for a list of enabled Apple or Android phones - compatibility is based on the phone providers' original operating system.



### CHOIX DE LA MANOEUVRE CITY PARK



Image used for illustrative purposes only.

### Park Assist

#### Park Assist pack: Includes Visio park 1 (Optional)

**Park Assist**: This system provides active assistance for parking by detecting a parking space and then operating the steering system to park in this space. During a parking manoeuvre the vehicle operates the steering whilst the driver manages the pedals and gearbox control. During the entry and exit from a space the system provides visual and audible information to improve the safety of the manoeuvre. The system works with both parallel and bay parking.



### 'Magic Wash' System

#### 'Magic Wash' System:

Mounted in the front windscreen wipers, all-new PEUGEOT Rifter models benefit from our innovative windscreen wash system, designed to more effectively distribute water and reduce wastage. Using nozzles located above the wiper blades, fluid is distributed as the wiper sweeps the windscreen. This avoids the 'temporary blindness' of more conventional bonnet mounted systems between fluid release and wiper sweeping, improving visibility.



### Smartphone Charging Plate

#### Smartphone Charging Plate: (Optional)

Through the use of inductive charging technology a compatible device can be charged wirelessly whilst on the move.

Operation is simple: just place your compatible smartphone on the charging area, once detected, battery charging begins.

The device must be Qi-compatible, the very latest smartphones from Blackberry, Google, HTC, LG, Microsoft, Motorola, Samsung, Apple and Sony feature this technology built in with no additional add-on required.

Other devices including iPhone 5/5c/5s, iPhone SE and iPhone 6/6 Plus/6s/6s Plus will require an additional QiInside Qi2001 accessory to access the wireless charging functionality.

For more information on this growing technology please [visit the Qi website](http://visit the Qi website)











Advanced Grip Control®

**Advanced Grip Control®:** (Optional on all versions)

To allow you to take on a variety of weather and terrains, all-new PEUGEOT Rifter can be specified with Advanced Grip Control®, a system designed to optimise traction in low-grip conditions. It adapts to the terrain by acting on the front wheels, in doing so this saves the weight normally associated with a more conventional four wheel drive system. Advanced Grip Control® offers the driver a choice of five driving modes, accessed via a rotary dial on the centre console. Designed to work in conjunction with all engines and transmissions, Advanced Grip Control® is optional across the all-new PEUGEOT Rifter range. In addition the system also incorporates a new Hill Assist Descent Control (HADC) for the first time, this optimises vehicle control on steep slopes.

	<p><b>ESP Off:</b></p> <p>Enables the disconnecting of the dynamic stability control (ESP) and traction aids (ASR/Grip Control), up to 31mph (50 km/h) to give the driver complete autonomy. These systems are automatically reconnected above this speed for safety.</p>		<p><b>Normal Mode:</b></p> <p>Calibrated system with a low, fixed level of wheel spin based on a compromise between the different types of grip generally encountered in normal day to day driving.</p>
 <p>Image used for illustrative purposes only.</p>			<p><b>Snow Mode:</b></p> <p>The system adapts to the grip conditions encountered by each wheel when starting. When advancing, the system optimises wheel spin to guarantee the best acceleration based on the available traction. Recommended in cases of deep snow and steep inclines.</p>
			<p><b>Mud Mode:</b></p> <p>This mode authorises a lot of wheel spin at start-up for the wheel with the least grip, this removes mud and re-establishes traction. Meanwhile, the wheel with the most grip is provided with the most torque possible.</p>
			<p><b>Sand Mode:</b></p> <p>This mode allows a small amount of simultaneous wheel spin on the two drive wheels, enabling the vehicle to advance and reduce the risk of sinking.</p>

Advanced Grip Control® Rotary Dial

Advanced Grip Control® Driving Modes

**Hill Assist Descent Control (HADC):** (Optional on all versions, included with Advanced Grip Control®:)

Designed to assist with the descent of steep slopes, Hill Assist Descent Control is incorporated as part of the Advanced Grip Control® system. When descending a slope with a gradient of more than 5% and with vehicle speed below 19mph the system will work to reduce the risk of slipping. During a descent the system maintains speed and brake control, allowing the driver to concentrate on the vehicles path of travel during the manoeuvre.

A clever feature incorporated within the Hill Assist Descent Control system is our unique 'Clutch Mode' security function. Selecting this function for very steep slopes regulates the vehicle speed to 2mph (3km/h), this allows the vehicle to creep down a steep slope in a completely controlled manner.



Image used for illustrative purposes only.



Hill Assist Descent Control (HADC) System

**Wheels and Tyres:**

Advanced Grip Control® also incorporates a bespoke wheel and tyre option to work in conjunction with the systems technology.

Models feature 16" 'Taranki' alloy wheels coupled with specific Mud and Snow (M+S) tyres to help optimise traction on varied surfaces.

Model shown is all-new PEUGEOT Rifter GT Line with optional Advanced Grip Control® and Sunset Copper paint



8 - Speed Efficient Automatic Transmission (EAT8)


**8 - Speed Efficient Automatic Transmission (EAT8):**

Our latest gearbox innovation in partnership with Aisin, featuring 8 gears for optimum driving pleasure, EAT8 offers:

- Up to a 5% reduction in fuel consumption as a result of optimised gearing
- Hyper progressive and linear with seamless changes for conquering the open road
- Optimised safety, gearbox automatically reverts to park 'P' upon switching off vehicle ignition.
- Reduced weight, through carefully selected materials, EAT8 offers weight saving of 6kg vs. EAT6

EAT8 is also controlled via the stylish new electric impulse control, beautifully designed, the compact rotary selector perfectly complements the stylish design of the PEUGEOT i-Cockpit®.

EAT8 can also be controlled via the steering column mounted paddles.




Electric Impulse Automatic Gearbox Control

**Electric Impulse Automatic Gearbox Control: (Standard EAT8 automatic versions)**

Linked to the all-new 8-speed Efficient Automatic Transmission (EAT8) with Quickshift Technology. This stylish gearbox control with its ergonomic design complements the PEUGEOT i-Cockpit®. This compact gearbox control even helps to free up space within the cabin.

Operation is intuitive and smooth, for the more exuberant driver a manual driving mode is also available, a simple press of the 'M' button located on the control gives full access to the steering column mounted paddles.



BlueHDI Diesel Engine Technology

**BlueHDI Diesel Engine Technology:**


BlueHDI is the name given to PEUGEOT's latest generation of diesel engines. The result of a world-famous diesel heritage plus innovation and engineering excellence developed on the race track of Le Mans, BlueHDI complies with Euro 6 emission standards, to deliver exceptional fuel economy and CO<sub>2</sub> emissions alongside a driving experience rich in power and performance.

This excellence that has been developed and honed has led to our latest development in diesel engine technology:

- 1.5L BlueHDI 130 S&S

The new BlueHDI 130 makes its debut in the all-new PEUGEOT Rifter range offering a host of innovations and benefits:

- Stronger performance from a smaller engine
- Improvements in fuel consumption
- Improved practicality, with dedicated AdBlue® filler under the fuel cap.





## Standard or Long version

### Standard or Long:

Built on PEUGEOT's modular EMP2 platform, the all-new PEUGEOT Rifter provides the fundamentals of practical, versatile design and is able to excel in any situation.

All-new Rifter comes with a 5-seat configuration as a Standard version (4.40m) and a 7-seat configuration as a Long version (4.75m).

All-new Rifter comes with 3 individual folding rear seats\* with Magic Flat\*\* function and the clever adaptability and modularity of this leisure activity vehicle. With the passenger seat folded\* you can fit objects up to 3m long on the Long version.

With its clever adaptability, the all-new Peugeot Rifter is never short of space and loads up quickly and efficiently.

\*depending on versions

\*\*available in 2019



## Intelligent storage solution

### Intelligent Storage Solutions

The all-new Rifter's optimised architecture means that it boasts one of the most capacious offerings on the market.

According to version, the boot of the all-new Rifter features a loading capacity of 775 litres under shelf, up to 4,000 litres under ceiling storage, and an additional enclosed space capable of storing up to 186 litres.

The all-new PEUGEOT Rifter features numerous and ergonomic storage compartments accessible for all passengers, some of which are detailed below:

- Under-seat storage on the driver seat\*,
- Upper glove compartment,
- High console between front seats with storage compartment\*,
- Row 2 underfloor storage compartments
- Zenith® Roof\*

\* depending on versions



## Zenith®Roof

**Zenith® Roof:** Standard on GT Line, available on Standard size only

The wide, one-section panoramic glass roof, can be covered with an electric blind.

The floating, translucent arch, including storage compartments, floods the passenger compartment with light. The floating arch has a capacity of up to 14 litres and is edged with LED ambience lighting.

The Zenith Roof® has many accessible storage areas giving a total 92 litre capacity: in the roof storage compartment, in the arch and in the roof case which can be accessed from the rear seats and/or the boot.



## 'Magic Flat' rear seat release switch

### 'Magic Flat' rear seat release switch: Standard on GT Line

Three individual seats^ with independent Magic Flat® controls\* located on the boot side trims, allow you to instantly create a flat floor for easy loading. The flat floor can also be created with the 2/3-1/3 bench seat or individual seats using the control at the top of the seat back.

^depending on trim level

\* available in 2019



## Opening rear tailgate window

### Opening rear tailgate window: Standard on GT Line

For increased modularity and ease of access, the opening rear tailgate window means you can gain entry to the roof case (on M versions) or your boot. With the 2 height position parcel shelf you can load your groceries with no need to open the tailgate. The parcel shelf can support up to 25kg.



Standard (5 seats)

		ENGINE	BHP	TITRE CODE (DIALOG DESCRIPTION)	CO <sub>2</sub> g/km	BASIC MRRP	VAT (£)	TOTAL MRRP	P11D VALUE (£)	2018/19 BIK %	ON THE ROAD MRRP
Active		1.2L PureTech 110 S&S 6-speed manual	109	1PK9AFQLGKT0A010 (ACT STD PT110)	126	15,824.17	3,164.83	18,989.00	19,650.00	26	19,870.00
		1.2L PureTech 130 EAT8 S&S *	TBC	1PK9AFQNP1T0A010 (ACT STD PT130A)	TBC	TBC	TBC	TBC	TBC	TBC	21,870.00
		1.5L BlueHDi 75 5-speed manual	75	1PK9AFQMJ5T0A010 (ACT STD BHD175)	109	15,640.83	3,128.17	18,769.00	19,430.00	26	19,650.00
		1.5L BlueHDi 100 5-speed manual	101	1PK9AFQMD5T0A010 (ACT STD BHD1100)	113	16,232.50	3,246.50	19,479.00	20,140.00	27	20,400.00
		1.5L BlueHDi 130 S&S 6-speed manual	129	1PK9AFQMAKT0A010 (ACT STD BHD1130)	114	17,165.83	3,433.17	20,599.00	21,260.00	27	21,520.00
		1.5L BlueHDi 130 EAT8 S&S 8-speed Efficient Automatic Transmission	129	1PK9AFQMA1T0A010 (ACT STD BHD1130A)	114	18,332.50	3,666.50	21,999.00	22,660.00	27	22,920.00
		1.2L PureTech 110 S&S 6-speed manual	109	1PK9AFTLGKT0A010 (ALL STD PT110)	126	16,699.17	3,339.83	20,039.00	20,700.00	26	20,920.00
		1.2L PureTech 130 EAT8 S&S *	TBC	1PK9AFTNP1T0A010 (ALL STD PT130A)	TBC	TBC	TBC	TBC	TBC	TBC	22,920.00
		1.5L BlueHDi 100 5-speed manual	101	1PK9AFTMD5T0A010 (ALL STD BHD1100)	113	17,107.50	3,421.50	20,529.00	21,190.00	27	21,450.00
		1.5L BlueHDi 130 S&S 6-speed manual	129	1PK9AFTMAKT0A010 (ALL STD BHD1130)	114	18,040.83	3,608.17	21,649.00	22,310.00	27	22,570.00
		1.5L BlueHDi 130 EAT8 S&S 8-speed Efficient Automatic Transmission	129	1PK9AFTMA1T0A010 (ALL STD BHD1130A)	114	19,207.50	3,841.50	23,049.00	23,710.00	27	23,970.00
	GT Line	1.2L PureTech 110 S&S 6-speed manual	109	1PK9AFWLGKT0A010 (GTL STD PT110)	126	18,074.17	3,614.83	21,689.00	22,350.00	26	22,570.00
		1.2L PureTech 130 EAT8 S&S *	TBC	1PK9AFWNP1T0A010 (GTL STD PT130A)	TBC	TBC	TBC	TBC	TBC	TBC	24,570.00
		1.5L BlueHDi 100 5-speed manual	101	1PK9AFWMD5T0A010 (GTL STD BHD1100)	113	18,482.50	3,696.50	22,179.00	22,840.00	27	23,100.00
		1.5L BlueHDi 130 S&S 6-speed manual	129	1PK9AFVMAKT0A010 (GTL STD BHD1130)	114	19,415.83	3,883.17	23,299.00	23,960.00	27	24,220.00
		1.5L BlueHDi 130 EAT8 S&S 8-speed Efficient Automatic Transmission	129	1PK9AFVMA1T0A010 (GTL STD BHD1130A)	114	20,582.50	4,116.50	24,699.00	25,360.00	27	25,620.00

\* Available to order from 2019



		ENGINE	BHP	TITRE CODE (DIALOG DESCRIPTION)	CO <sub>2</sub> g/km	BASIC MRRP	VAT (£)	TOTAL MRRP	P11D VALUE (£)	2018/19 BIK %	ON THE ROAD MRRP
Long (7 seats)	Active	<b>1.2L PureTech 110 S&amp;S</b> 6-speed manual	TBC	1PK9CLQLGKT0A010 (ACT LONG PT110)	TBC	TBC	TBC	TBC	TBC	TBC	<b>21,570.00</b>
		<b>1.2L PureTech 130 EAT8 S&amp;S *</b> 8-speed Efficient Automatic Transmission	TBC	1PK9CLQNP1T0A010 (ACT LONG PT130A)	TBC	TBC	TBC	TBC	TBC	TBC	<b>23,570.00</b>
		<b>1.5L BlueHDi 100</b> 5-speed manual	101	1PK9CLQMD5T0A010 (ACT LONG BHD1100)	115	18245.83	3649.17	21895.00	21840.00	28	<b>22,100.00</b>
		<b>1.5L BlueHDi 130 S&amp;S</b> 6-speed manual	129	1PK9CLQMAKT0A010 (ACT LONG BHD1130)	117	19179.17	3835.83	23015.00	22960.00	28	<b>23,220.00</b>
		<b>1.5L BlueHDi 130 EAT8 S&amp;S</b> 8-speed Efficient Automatic Transmission	129	1PK9CLQMA1T0A010 (ACT LONG BHD1130A)	120	20345.83	4069.17	24415.00	24360.00	28	<b>24,620.00</b>
	Allure	<b>1.2L PureTech 110 S&amp;S</b> 6-speed manual	TBC	1PK9CLTLGKT0A010 (ALL LONG PT110)	TBC	TBC	TBC	TBC	TBC	TBC	<b>22,620.00</b>
		<b>1.2L PureTech 130 EAT8 S&amp;S *</b> 8-speed Efficient Automatic Transmission	TBC	1PK9CLTNP1T0A010 (ALL LONG PT130A)	TBC	TBC	TBC	TBC	TBC	TBC	<b>24,620.00</b>
		<b>1.5L BlueHDi 100</b> 5-speed manual	101	1PK9CLTMD5T0A010 (ALL LONG BHD1100)	115	19120.83	3824.17	22945.00	22890.00	28	<b>23,150.00</b>
		<b>1.5L BlueHDi 130 S&amp;S</b> 6-speed manual	129	1PK9CLTMAKT0A010 (ALL LONG BHD1130)	117	20054.17	4010.83	24065.00	24010.00	28	<b>24,270.00</b>
		<b>1.5L BlueHDi 130 EAT8 S&amp;S</b> 8-speed Efficient Automatic Transmission	129	1PK9CLTMA1T0A010 (ALL LONG BHD1130A)	120	21220.83	4244.17	25465.00	25410.00	28	<b>25,670.00</b>
	GT Line	<b>1.2L PureTech 110 S&amp;S</b> 6-speed manual	TBC	1PK9CLWLGKT0A010 (GTL LONG PT110)	TBC	TBC	TBC	TBC	TBC	TBC	<b>24,270.00</b>
		<b>1.2L PureTech 130 EAT8 S&amp;S *</b> 8-speed Efficient Automatic Transmission	TBC	1PK9CLWNP1T0A010 (GTL LONG PT130A)	TBC	TBC	TBC	TBC	TBC	TBC	<b>26,270.00</b>
		<b>1.5L BlueHDi 100</b> 5-speed manual	101	1PK9CLWMD5T0A010 (GTL LONG BHD1100)	115	20495.83	4099.17	24595.00	24540.00	28	<b>24,800.00</b>
		<b>1.5L BlueHDi 130 S&amp;S</b> 6-speed manual	129	1PK9CLWMAKT0A010 (GTL LONG BHD1130)	117	21429.17	4285.83	25715.00	25660.00	28	<b>25,920.00</b>
		<b>1.5L BlueHDi 130 EAT8 S&amp;S</b> 8-speed Efficient Automatic Transmission	129	1PK9CLWMA1T0A010 (GTL LONG BHD1130A)	120	22595.83	4519.17	27115.00	27060.00	28	<b>27,320.00</b>

\* Available to order from 2019

All-new PEUGEOT RIFTER: Equipment

Standard	●		OPTION CODE	ACTIVE	ALLURE	GT LINE	Basic RRP £ Excluding VAT	VAT @ 20%	Total RRP £ Including VAT
Optional	○								
Not available	-								

PAINT									
Metallic paint / Onyx Black / Ardent red	M0...	○	○	○	454.17	90.83	545.00		

SAFETY AND SECURITY									
Alarm (Thatcham category 1 approved)	AB13	○	○	○	166.67	33.33	200.00		
Advanced Grip Control®	UF02	○	○	-	541.67	108.33	650.00		
Advanced Grip Control® (Reduces alloy wheel size to 16" 'Taranaki' Alloy Wheel)	UF02	-	-	○	291.67	58.33	350.00		
Safety Plus Pack : Pack Safety, Traffic sign recognition, Driver attention monitoring system, Low / High beam function	ZV79	-	-	○	125.00	25.00	150.00		
Drive Assist Pack: Safety Plus Pack, Adaptive cruise control with stop function (brakes until 20mph for manual gearboxes) - Not available on 1.5L BlueHDi 100	ZV80	-	-	○	166.67	33.33	200.00		

COMFORT AND CONVENIENCE									
Automatic dual zone climate control (brings fan strength command in row 2)	RE07	-	○	●	208.33	41.67	250.00		
Parking sensors - front and rear	UB03	-	○	○	166.67	33.33	200.00		
Visio Park 1: Parking sensors - front and rear, Blind spot monitoring system and 180° Colour Reversing camera Must be ordered together	AO01 + QK02 + UB03	-	-	○	416.67	83.33	500.00		
Park Assist pack: Visio Park 1 and Park Assist	N402	-	-	○	583.33	116.67	700.00		
PEUGEOT Open and Go (keyless entry and push button start)	YD01	-	○	●	208.33	41.67	250.00		
Rear restraining net	NM01	○	○	○	83.33	16.67	100.00		

INTERIOR FEATURES									
Family Pack: additional child rear view mirror and blinds on rear side windows	XN01	○	○	○	83.33	16.67	100.00		

IN CAR ENTERTAINMENT									
Connected 3D Navigation*: includes TomTom® Live updates (3 year subscription), includes PEUGEOT Connect SOS and Assistance - Must be ordered together	WL2K + YR07	-	○	●	541.67	108.33	650.00		
230V socket	ES11	-	○	○	83.33	16.67	100.00		
Smartphone charging plate	E301	-	○	○	83.33	16.67	100.00		

EXTERIOR FEATURES									
Tow bar: detachable without tools, includes TSM (Trailer Sway Mitigation system) (13 pin plug)	AQ04	○	○	○	416.67	83.33	500.00		
'17" 'Aoraki' Alloy Wheel - Not compatible with Grip Control®	DZSE	-	○	●	166.67	33.33	200.00		

\*Additional terms and conditions apply to connected services, including customer acceptance of location sharing prior to activation.  
For further information call PEUGEOT on 0800 083 3000 or visit our website at [www.peugeot.co.uk](http://www.peugeot.co.uk)



All-new PEUGEOT RIFTER: Equipment

Standard	●		
Optional	○		
Not available	-		
	ACTIVE	ALLURE	GT LINE

BODYSTYLE			
Standard (5 seats)	●	●	●
Long (7 seats)	●	●	●

SAFETY AND SECURITY			
ABS (Anti-lock Braking System) with EBD (Electronic Braking Distribution) and EBA (Emergency Braking Assistance)	●	●	●
Airbags: Adaptive driver and front passenger airbags (includes passenger airbag deactivation function)	●	●	●
Airbags: Driver and front passenger side airbag	●	●	●
Airbags: Front and rear curtain airbags	●	●	●
Alarm (Thatcham category 1 approved)	○	○	○
Automatic door locking when moving off	●	●	●
Automatic hazard light activation upon heavy brake application	●	●	●
Child locking functionality on rear doors	●	●	●
Deadlocking	●	●	●
Electronic code immobiliser	●	●	●
ESP (Electronic Stability Program) with Hill start assist	●	●	●
Advanced Grip Control®	○	○	○
Front optimised safety headrests and rear retractable headrests (x3), height-adjustable.	●	●	●
Front three-point retractable seatbelts, with force limiters	●	●	●
Front and rear disc brakes	●	●	●
Gear Shift Indicator	●	●	●
Headlights left on audible warning	●	●	●
Isofix child seat fittings (x3) in the second row	●	●	●
PEUGEOT Connect SOS and Assistance - Needs to be ordered in conjunction with 3D Connected Navigation (WL2K)	-	○	●
Programmable cruise control and speed limiter	●	●	●
Safety Pack: Lane Keeping Assist, Speed limit recognition and recommendation and Active Safety Brake	●	●	●
Safety Plus Pack : Pack Safety, Traffic sign recognition, Driver attention monitoring system, Low / High beam function	-	-	○
Drive Assist Pack: Safety Plus Pack, Adaptive cruise control with stop function (brakes until 20mph for manual gearboxes) - Not available on 1.5L BlueHdi 100	-	-	○
Seatbelt unfastened on the move audible and visual alert for front and rear seats	●	●	●
Steel spare wheel	●	●	●
Tyre pressure sensors	●	●	●
Exterior temperature indicator with ice warning	-	-	●

COMFORT AND CONVENIENCE			
Air conditioning (manual)	●	●	-
Automatic dual zone climate control	-	○	●
Air-vents in 2nd row with USB socket	-	●	
Air-vents in 2nd row with fan strength command and USB Socket - Needs to be ordered in conjunction with Automatic dual zone climate control (RE07)	-	○	●
Dark tinted rear side and tailgate windows	-	-	●
Opening rear tailgate window	-	-	●
Electric and heated door mirrors	●	●	●
Electric parking brake	-	●	●
Electric power steering with reach- and rake-adjustable steering column	●	●	●
Front interior light with reading spotlights (x2) and rear interior light with timer	●	●	●
Front windscreen wiper with multi-speed setting	●	●	●

	ACTIVE	ALLURE	GT LINE
Tailgate with heated rear windscreen & wiper blade	●	●	●
Multifunction trip computer	●	●	●
Electric front windows	●	●	●
Pop-out opening rear side windows	●	-	-
Electric rear windows	-	●	●
Parking sensors - rear	-	●	●
Parking sensors - front and rear	-	○	○
Front and Rear Parking sensors, Blind spot monitoring system and 180° Colour Reversing camera	-	-	○
Front and Rear Parking sensors, Blind spot monitoring system, 180° Colour Reversing camera and Park assist	-	-	○
PEUGEOT i-Cockpit®: compact steering wheel	●	●	●
PEUGEOT i-Cockpit®: Head-up instrument panel	●	●	●
PEUGEOT i-Cockpit®: 8.0" capacitive touchscreen	-	●	●
PEUGEOT Open and Go (keyless entry and push button start)	-	○	●
Power folding door mirrors	-	-	●
Rear windscreen wiper triggered automatically in reverse gear	●	●	●
Remote central locking (two remotes)	●	●	●
Fixing rings (x4), in load area	●	●	●
Rear restraining net	○	○	○

INTERIOR FEATURES			
Seating trim: 'Enigmatic' cloth seat trim with overstitch detail	●	-	-
Seating trim: 'Puma' cloth seat trim with blue overstitch detail	-	●	-
Seating trim: 'Casual' cloth seat trim with overstitch detail	-	-	●
Adamantium interior ambience	●	-	-
Picasso blue interior ambience	-	●	-
Quente Brown interior ambience	-	-	●
Leather Steering wheel	●	●	●
Seating: Height adjustable driver seat	●	-	-
Seating: Height adjustable driver seat with adjustable lumbar support, under-seat storage and elbow rest	-	●	●
Seating: Foldable passenger seat with under-seat storage and elbow rest	-	●	●
Seating: Tray tables at the back of the front seats	-	●	●
Seating: -1/3 – 2/3 folding rear seat (2 row)	●	●	-
Seating: 3 independent rear seat (2 row) with "Magic Flat" modularity with controls accessible from the boot	-	-	●
Seating: 2 independent and removable sliding 3 row seat (Long versions only)	●	●	●
2 heights parcel shelf (Standard versions only)	●	●	●
Retractable parcel shelf (Long versions only)	●	●	●
Row 2 underfloor storage compartments	●	●	●
Zenith Roof®: Cielo panoramic roof with electric interior blind (Standard versions only)	-	-	●
Zenith Roof®: Floating translucent roof arch with background lighting and storage (Standard versions only)	-	-	●
Zenith Roof®: Rear storage roof case accessible from the 2nd row and the trunk (Standard versions only)	-	-	●
Upper glove compartment	●	●	●
Family Pack: additional child rear view mirror and blinds on rear side windows	○	○	○
Full width front overhead storage shelf	-	●	●
Driver and Passenger dashboard mounted cup holders	●	●	●
High console between front seats with storage compartment	-	●	●

All-new PEUGEOT RIFTER: Equipment

Standard	●		
Optional	○		
Not available	-		
	ACTIVE	ALLURE	GT LINE

IN CAR ENTERTAINMENT			
Bluetooth® telephone facility	●	●	●
DAB Radio (Digital Audio Broadcasting)	●	●	●
Mirror Screen®: (Apple CarPlay™, Android Auto and MirrorLink®)	-	●	●
USB socket	●	●	●
USB socket at the back	-	●	●
Voice recognition (radio, navigation and telephony features)	-	●	●
Connected 3D Navigation*: includes TomTom® Live updates (3 year subscription) - Needs to be ordered in conjunction with PEUGEOT Connect and SOS (YR07)	-	○	●
6-Speaker radio, MP3 compatible	●	●	●
230V socket	-	○	○
12 V socket	●	●	●
Smartphone charging plate	-	○	○

EXTERIOR FEATURES			
Black front bumper with coloured inserts	●	-	-
Body coloured front bumper	-	●	●
Contrasting wheel arch trim	●	●	●
Door sill protectors	●	●	-
Door sill protectors with gloss black inserts	-	-	●
Radiator grille: 3D stamped effect and chrome surround	●	●	-
Radiator grille: 3D stamped effect and black surround	-	-	●
Body-colour door mirrors	●	●	-
Gloss black door mirrors	-	-	●
Body-colour exterior door handles	●	●	●
'GT Line' emblems (front wings and tailgate)	-	-	●
Front and rear scuff plates	-	●	●
Aluminium roof bars	●	●	-
Gloss Black roof bars (Aluminium on Long 'L' versions)	-	-	●
16" Steel Wheel with 'Rakiura' wheel trim	●	-	-
16" 'Taranaki' Alloy Wheel	-	●	-
17" 'Aoraki' Alloy Wheel (16" 'Taranaki' Alloy wheel if Avanced Grip Control® option selected)	-	○	●
Two glazed sliding side doors	●	●	●
Tow bar: detachable without tools, includes TSM (Trailer Sway Mitigation system) (13 pin plug)	○	○	○

LIGHTING AND VISIBILITY			
Halogen headlights	-	●	●
LED daytime running lights built into the headlamp unit	-	●	●
Rear LED PEUGEOT signature 'Claw Effect' lights	●	●	●
Front fog lights with cornering function	●	●	●
Visibility pack: automatic lights	●	●	●
Visibility pack: automatic MagicWash® windscreen wipers	●	●	●
Visibility pack: electrochrome rear view mirror (auto dimming)	●	●	●
Visibility pack: 'follow me home headlamps'	●	●	●

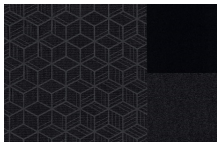


\*Additional terms and conditions apply to connected services, including customer acceptance of location sharing prior to activation.

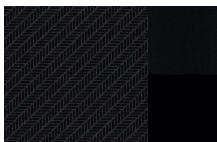


All-new PEUGEOT Rifter: Trims and Wheels

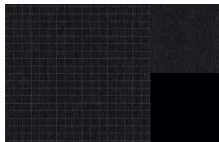
		ACTIVE	ALLURE	GT LINE
Upholstery		'Enigmatic' cloth seat trim with overstitch detail	'Puma' cloth seat trim with blue overstitch detail	'Casual' cloth seat trim with overstitch detail
Trim Code		OBFE	OCFY	ODFY
SOLID PAINT				
Bianca White	P0WP	●	●	●
Onyx Black	P0XY	○	○	○
Ardent Red	P0X9	○	○	○
METALLIC PAINT				
Cumulus Grey	M0F4	○	○	○
Nimbus Grey	M0VL	○	○	○
Pearl Sand	M0EU	○	○	○
Deep Blue	M0JG	○	○	○
Sunset Copper	M0LG	○	○	○



'Enigmatic' cloth seat trim with overstitch detail



'Puma' cloth seat trim with blue overstitch detail



'Casual' cloth seat trim with overstitch detail



Bianca White



Ardent Red



Onyx Black



Cumulus Grey



Pearl Sand



Nimbus Grey



Sunset Copper



Deep Blue

All-New PEUGEOT Rifter Range: Wheels

16" Steel Wheel with 'Rakiura' wheel trim		●	-	-
16" 'Taranaki' Alloy wheel		-	●	○*
17" 'Aoraki' Alloy wheel	DZSE	-	○	●



16" Steel Wheel with 'Rakiura' wheel trim



16" 'Taranaki' Alloy wheel



17" 'Aoraki' Alloy wheel

\* Linked to Grip Control® option pack

All-new PEUGEOT Rifter Standard: Technical Specification

			Petrol		Diesel			
			1.2L PureTech 110 S&S 6-speed manual	1.2L PureTech 130 EAT8 S&S 8-speed Efficient Automatic Transmission	1.5L BlueHDi 75 5-speed manual	1.5L BlueHDi 100 5-speed manual	1.5L BlueHDi 130 S&S 6-speed manual	1.5L BlueHDi 130 EAT8 S&S 8-speed Efficient Automatic Transmission
DRIVETRAIN	Fuel type		Petrol	Petrol	Diesel	Diesel	Diesel	Diesel
	Stop and Start functionality		●	●	●	-	●	●
	Cubic capacity (cc)		1199	1199	1499	1499	1499	1499
	Maximum power bhp (Kw)		109 (81) @ 5500	TBC	75 (56) @ 3500	101 (75) @ 3500	129 (96) @ 3750	129 (96) @ 3750
	Maximum torque lb/ft (Nm)		184 (250) @ 1750	TBC	170 (230) @ 1750	184 (250) @ 1750	221 (300) @ 1750	221 (300) @ 1750
	5 speed manual				●	●		
	6 speed manual		●				●	
	8 speed automatic			●				●
BRAKES	Front and rear discs		●	●	●	●	●	●
SUSPENSIONS AND TYRES	Front suspension		Pseudo MacPherson					
	Rear suspension		De-formable Crossmember					
	Size - 16" tyres		215/65R16					
	Size - 17" tyres		215/60R17					
REGULATED EMISSIONS	Carbon monoxide (mg/km)		415.8	TBC	57.1	59.9	98.1	73.1
	Total hydrocarbons (mg/km)		22.1	TBC	-	-	-	-
	Nitrogen Oxides (mg/km)		29.1	TBC	34.3	30	44.9	40
	Total Hydrocarbons + Nitrogen Oxides (mg/km)		/	TBC	53.2	47.4	63.4	59
	Particulate Matter (mg/km)		0.99	TBC	2.12	0.63	0.83	0.38
FUEL CONSUMPTION, EMISSIONS AND PERFORMANCE (driver only) INFORMATION	16" and 17" Wheels	Maximum speed (mph)	109	TBC	95	109	116	114
		Acceleration 0-62 mph driver only (sec)	11.7	TBC	17	12.5	10.4	10.8
		Urban drive cycle MPG (litres/100km)	44.8 (6.3)	TBC	61.4 (4.6)	58.9 (4.8)	58.9 (4.8)	61.4 (4.6)
		Extra Urban drive cycle MPG (litres/100km)	56.5 (5.0)	TBC	72.4 (3.9)	70.6 (4)	70.6 (4)	67.3 (4.2)
		Combined drive cycle MPG (litres/100km)	51.4 (5.5)	TBC	68.9 (4.1)	65.7 (4.3)	65.7 (4.3)	65.7 (4.3)
		Regulated Emission Standard	Euro 6.2	Euro 6.2	Euro 6.2	Euro 6.2	Euro 6.2	Euro 6.2
		Carbon Dioxide (CO2) emissions (g/km)	126	TBC	109	113	114	114
	16" Wheels with Advanced Grip Control®	Maximum speed (mph)	109	TBC	95	109	116	114
		Urban drive cycle MPG (litres/100km)	42.2 (6.7)	TBC	61.4 (4.6)	58.9 (4.8)	58.9 (4.8)	61.4 (4.6)
		Extra Urban drive cycle MPG (litres/100km)	54.3 (5.2)	TBC	72.4 (3.9)	68.9 (4.1)	68.9 (4.1)	67.3 (4.2)
		Combined drive cycle MPG (litres/100km)	49.6 (5.7)	TBC	67.3 (4.2)	65.7 (4.3)	64.2 (4.4)	64.2 (4.4)
		Regulated Emission Standard	Euro 6.2	Euro 6.2	Euro 6.2	Euro 6.2	Euro 6.2	Euro 6.2
		Carbon Dioxide (CO2) emissions (g/km)	131	TBC	111	114	116	116
VEHICLE WEIGHT INFORMATION (kg)	Gross vehicle weight		2060	TBC	2100	2100	2135	2120
	Mass in service		3143	TBC	1612	1612	1618	3233
	Kerb weight		1387	TBC	1424	1424	1430	1430
	Gross train weight		3210	TBC	3100	3400	3635	3420
	Maximum braked trailer weight		1150	TBC	1000	1300	1500	1300
	Maximum tow ball weight		74	TBC	74	74	74	52
INSURANCE CODES	Active		10E	TBC	8E	11E	14E	14E
	Allure		11E	TBC	-	11E	14E	14E
	GT Line		12E	TBC	-	12E	15E	15E

All-new PEUGEOT Rifter Long: Technical Specification

			Petrol		Diesel		
			1.2L PureTech 110 S&S 6-speed manual	1.2L PureTech 130 EAT8 S&S 8-speed Efficient Automatic Transmission	1.5L BlueHDi 100 5-speed manual	1.5L BlueHDi 130 S&S 6-speed manual	1.5L BlueHDi 130 EAT8 S&S 8-speed Efficient Automatic Transmission
DRIVETRAIN	Fuel type		Petrol	Petrol	Diesel	Diesel	Diesel
	Stop and Start functionality		●	●	-	●	●
	Cubic capacity (cc)		1199	1199	1499	1499	1499
	Maximum power bhp (Kw)		TBC	TBC	101 (75) @ 3500	129 (96) @ 3750	129 (96) @ 3750
	Maximum torque lb/ft (Nm)		TBC	TBC	184 (250) @ 1750	221 (300) @ 1750	221 (300) @ 1750
	5 speed manual				●		
	6 speed manual		●			●	
	8 speed automatic			●			●
BRAKES	Front and rear discs		●	●	●	●	●
SUSPENSIONS AND TYRES	Front suspension		Pseudo MacPherson				
	Rear suspension		De-formable Crossmember				
	Size - 15" tyres		195/65R15				
	Size - 16" tyres		215/65R16				
	Size - 17" tyres		215/60R17				
REGULATED EMISSIONS	Carbon monoxide (mg/km)		TBC	TBC	59.9	98.1	73.1
	Total hydrocarbons (mg/km)		TBC	TBC	-	-	-
	Nitrogen Oxides (mg/km)		TBC	TBC	30	44.9	40
	Total Hydrocarbons + Nitrogen Oxides (mg/km)		TBC	TBC	47.4	63.4	59
	Particulate Matter (mg/km)		TBC	TBC	0.63	0.83	0.38
FUEL CONSUMPTION, EMISSIONS and PERFORMANCE (driver only) INFORMATION	16" and 17" Wheels	Maximum speed (mph)	TBC	TBC	109	116	114
		Acceleration 0-62 mph driver only (sec)	TBC	TBC	TBC	TBC	TBC
		Urban drive cycle MPG (litres/100km)	TBC	TBC	58.9 (4.8)	57.6 (4.9)	57.6 (4.9)
		Extra Urban drive cycle MPG (litres/100km)	TBC	TBC	68.9 (4.1)	67.3 (4.2)	64.2 (4.4)
		Combined drive cycle MPG (litres/100km)	TBC	TBC	64.2 (4.4)	64.2 (4.4)	61.4 (4.6)
		Regulated Emission Standard	Euro 6.2	Euro 6.2	Euro 6.2	Euro 6.2	Euro 6.2
		Carbon Dioxide (CO2) emissions (g/km)	TBC	TBC	115	117	120
	16" Wheels with Advanced Grip Control®	Maximum speed (mph)	TBC	TBC	109	116	114
		Acceleration 0-62 mph driver only (sec)	TBC	TBC	13.1	10.9	11.3
		Urban drive cycle MPG (litres/100km)	TBC	TBC	58.9 (4.8)	57.6 (4.9)	56.5 (5.0)
		Extra Urban drive cycle MPG (litres/100km)	TBC	TBC	67.3 (4.2)	65.7 (4.3)	62.8 (4.5)
		Combined drive cycle MPG (litres/100km)	TBC	TBC	64.2 (4.4)	62.8 (4.5)	61.4 (4.6)
		Regulated Emission Standard	Euro 6.2	Euro 6.2	Euro 6.2	Euro 6.2	Euro 6.2
		Carbon Dioxide (CO2) emissions (g/km)	TBC	TBC	116	119	122
VEHICLE WEIGHT INFORMATION (KG)	Gross vehicle weight		TBC	TBC	2300	2320	2340
	Mass in service		TBC	TBC	1697	1697	1749
	Kerb weight		TBC	TBC	1540	1540	1593
	Gross train weight		TBC	TBC	3350	3570	3390
	Maximum braked trailer weight		TBC	TBC	1050	1250	1050
	Maximum tow ball weight		TBC	TBC	50	50	50
INSURANCE CODES	Active		10E	TBC	11E	14E	14E
	Allure		11E	TBC	11E	14E	14E
	GT Line		11E	TBC	12E	15E	15E

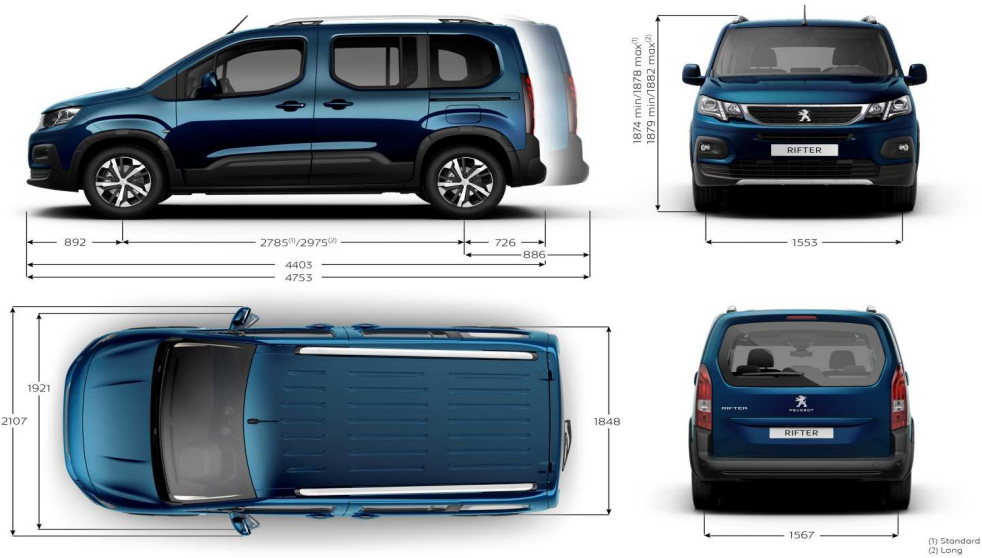


EXTERNAL DIMENSIONS

Length Standard / Long (mm)	4,403 / ,4753
Width (mm)	2,107
Height Standard / Long (mm)	1,878 / 1,882
Wheelbase Standard / Long (mm)	2,785 / 2,975
Front - rear overhang Standard / Long (mm)	892 / 726 / 892 / 886
Front / rear track width (mm)	1,553 / 1,567
Approach / departure angles (degree)	17.5 / 25.7
Ground clearance (mm)	216
Sliding side door Max. opening width (mm)	737
Sliding side door opening height	1145

INTERNAL DIMENSIONS

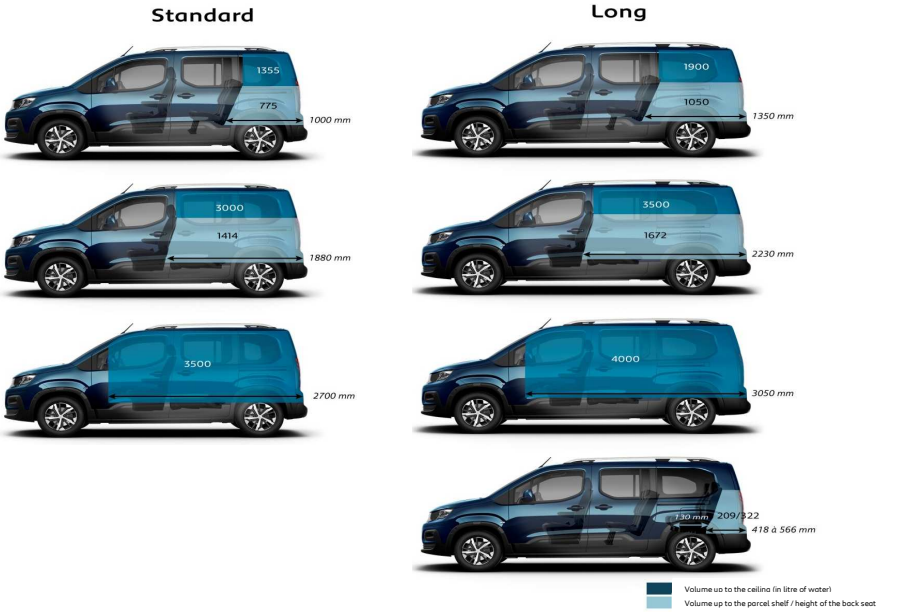
Number of seats Standard / Long	5 / 7
Front 2nd row elbow room (mm)	1,509
Front 2nd row shoulder room (mm)	1,465



BOOT, STORAGE & FUEL TANK

Maximum loading length Standard / Long (mm)	2,700 / 3,050
Max. loading length behind row 1 (maximum forward position) Standard / Long (mm)	1,880 / 2,230
Max. loading length with passenger seat folded Standard / Long (mm)	2,700 / 3,050
Max. loading length behind row 2 Standard / Long (mm)	1,000 / 1,350
Max. loading length behind row 3 Standard / Long (mm)	236 / 418 to 566
Opening of boot, height / width (mm)	1,195 / 1,126
Boot volume under the parcel shelf Standard / Long with 3rd row removed (litres)	775 / 1,050
Boot volume up to the ceiling Standard / Long with 3rd row removed (litres)	1,355 / 1,900
Boot volume under the parcel shelf with 2nd row folded Standard / Long with 3rd row removed (litres)	1,414 / 1,672
Boot volume up to the ceiling with 2nd row folded Standard / Long with 3rd row removed (litres)	3,000 / 3,500
Boot volume up to the ceiling with 2nd row folded and passenger seat folded Standard / Long with 3rd row removed (litres)	3,500 / 4,000
Max. volume of storage areas in the passenger compartment Standard / Long (litres)	192 <sup>^</sup> / 96
Fuel tank capacity Petrol / Diesel (litres)	61 / 50
AdBlue* tank (litres)	17

<sup>^</sup>with Zenith\* roof



All-new PEUGEOT Rifter: Service Contracts

PEUGEOT offer two levels of Service Contract:

PEUGEOT Service Plans

What's included:

- PEUGEOT Service Plans offer complete assurance that all your servicing costs will be completely covered for the duration of the plan
- We offer PEUGEOT Service Plans for up to five years with many mileage options
- One-off up front or monthly direct debit payment options available
- All packages are affordable and inflation proof, which means they will remain at a fixed cost for the duration of the plan.

Monthly price examples\*:

36 Months / 30,000 Miles	48 Months / 40,000 Miles	60 Months / 50,000 Miles
12.99 per month	13.99 per month	13.99 per month

\* Price examples based on an annual mileage of 10,000 per annum

A PEUGEOT Service Plan can be purchased up to 12 months after registration date. The prices quoted above are indicative, for a bespoke quote please contact your local PEUGEOT Dealer. If the plan is taken out after the date of registration an additional payment will be required to cover this starting period. Any normal wear and tear maintenance work such as replacement of tyres, brake pads, brake discs, clutches, shock absorbers, wipers, batteries, bulbs, silencer, exhausts and windscreens are excluded. Servicing must be carried out by a PEUGEOT Authorised Repairer in the UK. PEUGEOT Motor Company reserve the right to change, amend or withdraw this product at any time.

Extended Peugeot Assistance\*

What's included: Extension of your PEUGEOT Assistance Cover

- Offers you the opportunity to extend PEUGEOT Assistance up to a further two years
- Cover includes:
  - PEUGEOT Assistance from Home
  - PEUGEOT Roadside Assistance
  - PEUGEOT Recovery
  - PEUGEOT Onward Travel
  - PEUGEOT European Cover

\* Excludes non-vehicle induced faults

To find out about extending your Peugeot Assistance cover, call 0800 294 0294.





Manufacturers Recommended Retail Price On The Road

The On the Road MRRP featured includes the following from April 2018:

Tax band	CO2 (g/km)	First Year VED (Petrol)	First Year VED (Diesel)	Annual Tax	First Reg fee	Delivery Charge	VAT @ 20% on Delivery	Total OTR Costs (Petrol)	Total OTR Costs (Diesel)
A	0	£0.00	£0.00	£0.00	£55.00	£550.83	£110.17	£716.00	£716.00
B	1-50	£10.00	£25.00	£140.00	£55.00	£550.83	£110.17	£726.00	£741.00
C	51-75	£25.00	£105.00	£140.00	£55.00	£550.83	£110.17	£741.00	£821.00
D	76-90	£105.00	£125.00	£140.00	£55.00	£550.83	£110.17	£821.00	£841.00
E	91-100	£125.00	£145.00	£140.00	£55.00	£550.83	£110.17	£841.00	£861.00
F	101-110	£145.00	£165.00	£140.00	£55.00	£550.83	£110.17	£861.00	£881.00
G	111-130	£165.00	£205.00	£140.00	£55.00	£550.83	£110.17	£881.00	£921.00
H	131-150	£205.00	£515.00	£140.00	£55.00	£550.83	£110.17	£921.00	£1,231.00
I	151-170	£515.00	£830.00	£140.00	£55.00	£550.83	£110.17	£1,231.00	£1,546.00
J	171-190	£830.00	£1,240.00	£140.00	£55.00	£550.83	£110.17	£1,546.00	£1,956.00
K	191-225	£1,240.00	£1,760.00	£140.00	£55.00	£550.83	£110.17	£1,956.00	£2,476.00
L	226-255	£1,760.00	£2,070.00	£140.00	£55.00	£550.83	£110.17	£2,476.00	£2,786.00
M	Over 255	£2,070.00	£2,070.00	£140.00	£55.00	£550.83	£110.17	£2,786.00	£2,786.00

VAT is calculated at 20%

VAT is not applicable to cars sold in the Channel Islands

PEUGEOT 3 Years of Warranty

All vehicles first registered in the UK and purchased from a UK PEUGEOT Dealer benefit from a PEUGEOT 2 year unlimited mileage manufacturer's warranty and a free optional additional 1 year of warranty provided by the PEUGEOT Dealer Network in the UK.

PEUGEOT Assistance

All new PEUGEOTs come with PEUGEOT Assistance, our breakdown assistance service.

Provided by the AA, PEUGEOT Assistance is available every minute of the day and night; 365 days of the year, for you and anyone else driving your PEUGEOT with your permission.

Full details are available at [www.peugeot.co.uk](http://www.peugeot.co.uk)

Terms and Conditions

Every endeavour has been made to ensure that the information, details and descriptions set out in this literature are correct, at the time of going to print.

It is our policy to continually improve our vehicles in every way. We reserve the right to modify our vehicles price, specification (including colour), equipment, accessories and characteristics or to discontinue any model, without notice, at any time.

To avoid any misunderstandings you are advised to check with your PEUGEOT Dealer the specification (including colour), equipment accessories and equipment relating to any PEUGEOT vehicle and the exact cost and availability prior to ordering.

Where a feature is described as an option in this publication it should be assumed that it is at extra cost unless specifically stated otherwise.

Issued by Sales and Marketing, PEUGEOT Motor Company PLC, Pinley House, Sunbeam Way, Coventry CV3 1ND.

