

STAR Parts

SERIOUS PARTS FOR SERIOUS TRUCKS.

JULY – OCTOBER 2020



All prices are excl. GST

**NEW DIESEL PARTICULATE
FILTERS FROM RDP!**



SEE INSIDE
FOR DETAILS

RDP



DONALDSON

P150695
PRIMARY AIR FILTER – KONEPAC
KENWORTH, MACK

\$107.17



P559000
SPIN-ON F/FLOW LUBE FILTER
CUMMINS ISX/X15 HIGH
EFFICIENCY OPTION

\$68.21



P534816
PRIMARY AIR FILTER –
RADIAL SEAL
WESTERN STAR

\$135.91



P550949
SPIN-ON F/FLOW LUBE FILTER
CUMMINS ISX/X15 OEM
EFFICIENCY OPTION

\$72.84



P182000
PRIMARY AIR FILTER – FINNED
KENWORTH (TWIN EXT OPTION)

\$54.94



P552200
SPIN-ON FUEL FILTER
CUMMINS ISX15/ISXE5

\$36.78



P153551
PRIMARY AIR
FILTER – KONEPAC
KENWORTH (STD) MACK,
WESTERN STAR

\$77.38



P555776
SPIN-ON FUEL FILTER
CUMMINS ISX EGR

\$62.32



DONALDSON FILTER KITS



Image samples only

X900058
**4WD KIT FORD
RANGER PX, MAZDA**

\$70.56



Image samples only

X903253
**TRUCK KIT HINO 500
SERIES**

\$67.05



X903234
**TRUCK KIT CUMMINS
ISX NON-EGR**

\$152.46

X770733
DEF FILTER

\$39.98

P785365
CABIN AIR FILTER

\$43.53

P550863
**FUEL FILTER
SECONDARY**

\$66.30

P550812
**OIL FILTER
PRIMARY**

\$70



P550952
**OIL FILTER
SECONDARY**

\$89.14

P550778
**FUEL FILTER
PRIMARY**

\$95.68

P784525
**AIR
FILTER**

\$230.25

X900131
**LIQUID
FILTER KIT**

\$289

SHELL

RIMR4L-209

RIMULA R4 L 15W40 CK4 209L

\$999

RIMR4L-20

RIMULA R4 L 15W40 CK4 20L

\$99

RIMR4L-C3X5

RIMULA R4 L 15W40 CK4 6L

\$31

RIMR4X1540-209

RIMULA R4 X 15W40 209L CI-4/E

\$899

RIMR4X1540-20

RIMULA R4 X 15W40 20L CI-4/E

\$99

RIMR4L-C3X5

RIMULA R4 X 15W40 6L CI-4/E

\$31

RIMR6LM-209

RIMULA R6 LM 10W40 CK4 209L

\$1,699

RIMR6LM-20

RIMULA R6 LM 10W40 CK4 20L

\$189



Shell
RIMULA

Heavy Duty Diesel Engine Oil

Shell Rimula's adaptive technology gives outstanding wear protection with reduced viscosity for improved fuel economy.

FROM

\$31



Shell Spirax oils are designed to help keep your transmission components protected so that they can go on working efficiently. Shell Spirax S6 AXME and Shell Spirax S6 GXME have special frictional properties and high fluidity that reduce power loss, lower the operating temperature and offer higher mechanical efficiency.

SPIS56TFX-209

SPIRAX S6 ATF A295 209L

\$6,799

SPIS56TFX-25

SPIRAX S6 ATF A295 20L

\$599



SPIS2A85140-209

SPIRAX S2 A 85W140 209L

\$1,099

SPIS2A85140-20

SPIRAX S2 A 85W140 20L

\$99

SPIS6AXME7590-209

SPIRAX S6 AXME 75W90 209L

\$2,599

SPIS6AXME7590-20

SPIRAX S6 AXME 75W90 20L

\$299

SPIS2A8090-209

SPIRAX S2 A 80W90 209L

\$999

SPIS2A8090-20

SPIRAX S2 A 80W90 20L

\$99

SPIS4CX50-209

SPIRAX S4 CX 50 209L

\$1,149

SPIS4CX50-20

SPIRAX S4 CX 50 20L

\$115

KZ101201B0
KING PIN 2" & BOLT KIT

\$119



R0500B66500
**ROCKINGER COUPLING
50MM 28T**

\$1,199



M281X
1810 UNI JOINT

\$85

M280X
1710 UNI JOINT

\$73

M676X
1810 1/2 ROUND UNI JOINT

\$109

20RHM080B156H
**INTER-AXLE DRIVE SHAFT –
SUIT KENWORTH**

20RHM087B190H
**INTER-AXLE DRIVE SHAFT –
SUIT WESTERN STAR/FREIGHTLINER**

\$1,650 EACH



MP23160430
CARRIER 23-160 FRONT 4.30

\$8,199

MR23160430
CARRIER 23-160 REAR 4.30

\$4,699

MPL23160456
CARRIER 23-160 FRONT 4.56

\$8,649

MRL23160456
CARRIER 23-160 REAR 4.56

\$5,199

MP23160410
CARRIER 23-160 FRONT 4.10

\$8,099

MR23160410
CARRIER 23-160 REAR 4.10

\$6,399

FRONT

\$8,099



REAR

\$4,699



KIT2663
KIT DCDL CONVERSION

\$899

RDP308935529

15.5X2 4000/2050+FTLB

\$1,399

RDP2083KCBW

15-1/2 X 2 3000 10 SPLINE

\$1,550

RDP2083K14CBW

15 1/2 X 2 3000 14 SPLINE

\$1,499

RDP308935271

15.5X2 EE 4000/1750FTLB

\$1,299

RDP308938556

15.5X2 EE 4200/2250FTLB

\$1,399

RDP309700529

15.5X2 4000/2050+FTLB

\$1,399

RDP309709556

15.5X2 SA 4200/2250FTLB

\$1,499

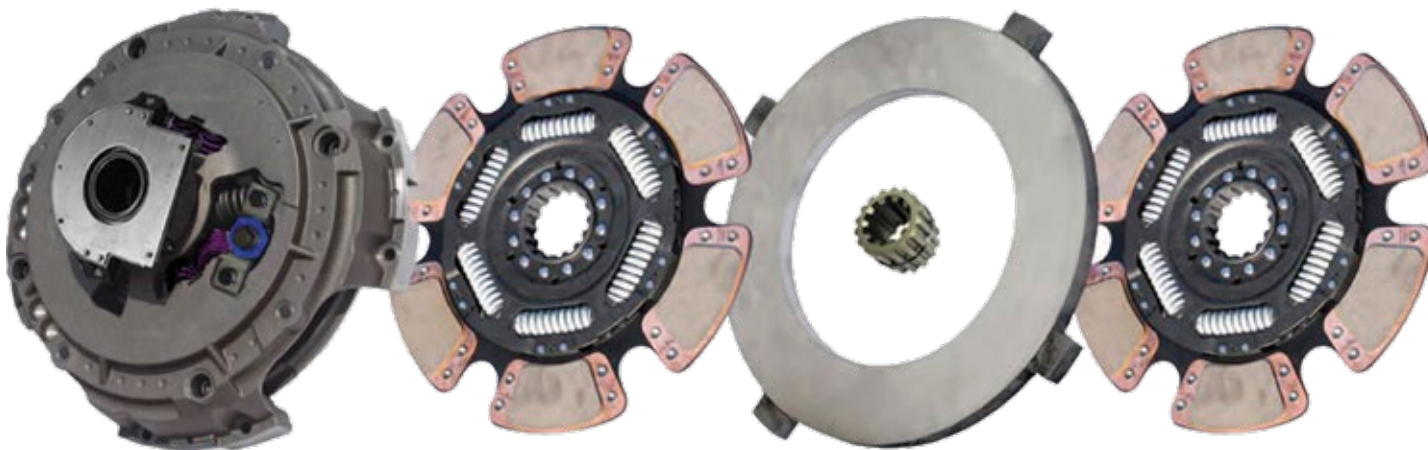
All heavy duty clutch kits include a 2" Torque Limiting Clutch Brake and Clutch Brake Washer

- O.E.M. Quality
- Made In The USA
- 100% New Components
- 2 Year Unlimited km Warranty



The Torque Performance clutches are built and designed specifically for the Australian market and include an HDD (heavy duty damper) design that provides the strongest disc in the clutch industry. The clutch kit includes a spline saver which increases the strength and circumference of the input shaft. A snap ring is included on the spline saver for easy and even installation of the clutch discs.

The 6 Paddle, 6-Spring design incorporates USA made springs that are longer and stronger than any other clutch disc spring.



RDP105C137
CLUTCH RELEASE YOKE

\$31.33



RDP106C939
CLUTCH CROSS SHAFT

\$46.40



RDPS1659
INPUT SHAFT

\$119



RDP128C204
BELL HOUSING BUSH SET OF 4

\$10.76



RDP127200
CLUTCH BRAKE 2" HINGED TWO PIECE

\$59



RDP127760
CLUTCH BRAKE 2" ONE PIECE

\$29



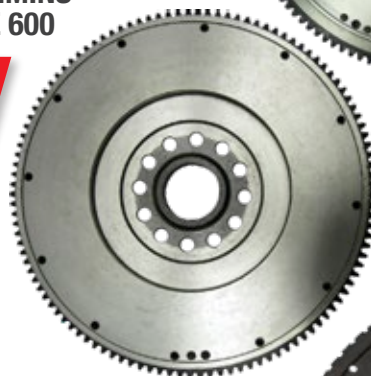
RDPFWS60
FLYWHEEL DETROIT DIESEL S60

\$499



RDPFWSIG600
FLYWHEEL CUMMINS ISX SIGNATURE 600

\$569



RDPFWDD15
DD15 FLYWHEEL 19.175"

\$649

RDPK2468
CLUTCH INSTALLATION KIT

\$289

RDPK3768
CLUTCH INSTALLATION KIT HYD

\$369



RDP



RDP894481590

**BELT TENSIONER KIT –
KW AC ISX E5**

\$129

RDPDE0002

**RDP DIESEL OXIDATION
CATALYST SUITS DD13/15**

\$4,899

RDP894481620

**BELT TENSIONER KIT –
KW AC ISX EGR**

\$129

RDPDE5501

**RDP DIESEL PARTICULATE
FILTER SUITS DD13/15**

\$2,599



**WESTERN STAR
DASH MATS**

**\$99
EACH**

WSDMBLK
BLACK
WSDMGRY
GREY

WSDMMAR
MAROON
WSDMTPE
BEIGE



RDPKIT105

**BPW BEARING KIT
CONTAINS 33213 / 33118**

\$119

RDPKIT106

**PRESET STEER BEARING KIT
CONTAINS SET445/SET446 + SPACER**

\$299

RDPKIT107

**PRESET DRIVE BEARING KIT
CONTAINS NP034946, NP363298
NP840302, NP053874 + SPACER**

\$179

NEW!



TIMKEN®



NATIONAL

NATIONAL
SEATING



50764062
**CAPTAIN –
RED CLOTH**

\$1,099



5107936G
**CAPTAIN – RED
CLOTH WITH ARMS**

\$1,099



51100063CB
**CORSAIR –
BLUE/GREY CLOTH**

\$1,399

Note – other options available and special pricing may apply.

SKF

SKF



47693
HIGH TEMP DRIVE SEAL

\$30.65

35066
FRONT AXLE SEAL

\$25.14

46305
TRAILER OIL SEAL

\$29.92

47697
DRIVE AXLE SEAL

\$28.92

CRS35066FT
INSTALL TOOL

\$99

CRS46305FT
INSTALL TOOL

\$119

CRS47697FT
INSTALL TOOL

\$119

FROM ONLY

\$19

**FLEET
SPECIAL**

BUY 50 SEALS,
RECEIVE AN INSTALL TOOL FOR 1/2 PRICE



CRC



\$9

5073CRC
**HOT SHOT
DEGREASER**



\$9

5089CRC
BRAKLEEN



\$16

2085CRC
ZINC IT



\$18

2016CRC
**CO CONTACT
CLEANER**



\$9

5005CRC
**5-56 MULTI-
PURPOSE**



\$14

5051CRC
AEROSTART



\$12

5098CRC
**BATTERY
TERMINAL
PROTECTOR**



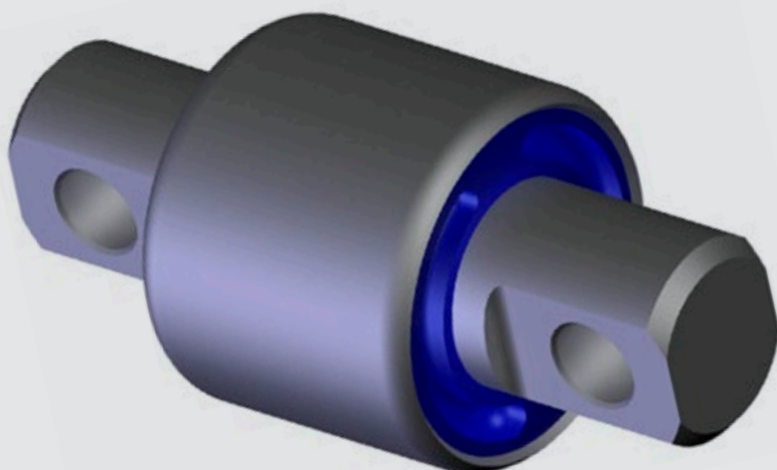
\$10

3055CRC
**808 SILICONE
SPRAY**



\$9

5097CRC
**BATTERY
MAINTENANCE**



839310
TORQUE ROD CARTRIDGE

\$79.25

DIESEL PARTICULATE FILTERS

New product! This all new RDP diesel particulate filter suits all Cummins ISX and Detroit DD13 and DD15 engines.

**FEATURED
PRODUCT
OF THE
MONTH**



RDPDE5501
SUIT CUMMINS ISX

\$2,249

(NO CORE CHARGE)

RDPDE5501
SUIT DETROIT DD13/15

\$2,599

(NO CORE CHARGE)



DETROIT $\frac{3}{4}$ DD15 ENGINE PACKAGE

BENEFITS OF THE $\frac{3}{4}$ DD15 ENGINE PACKAGE:

- Reuse of existing ancillary components, saving you money
- Additional cost savings in parts and labour
- Ease of installation with ancillary components perfectly matching
- Shorter lead time than a full overhaul
- Favourable warranty terms that include engine block and all internals

SPECIFICATIONS

Part Number	R23565049
Sump Orientation	Rear
Warranty	12 months, 160,000 kms

DETROIT $\frac{3}{4}$ DD15 ENGINE PACKAGE INCLUSIONS

- Block
- Crankshaft
- Cylinder kits
- Cylinder head
- Cam housing
- Camshafts
- Rocker cover
- Basic gear train
- Gear case cover
- Oil/coolant module
 - Water pump (in module)
 - Thermostat and housing (in module)
 - Oil cooler (in module)
- Oil fill (in module)
- Oil/coolant filters (in module)
- Oil pan and oil distribution
- Crank/cam timing sensors
- Coolant/oil temp sensors
- Oil pressure sensor
- Injectors
- High pressure rail
- Fuel rail to injector fuel lines
- Flywheel
- Flywheel housing
- Vibration damper



**DD15 ENGINE
PACKAGE
\$37,999**



DETROIT™

**Ask us about
an install
price!**



DETROIT DD15 COMPRESSOR

EA4711302515

**Air
Compressor**

**PRICE
\$1,499**

POWER COOL COOLANT

20lt Premix Power Cool

\$99

23512140



205lt Premix Power Cool

\$899

23513503



DETROIT DD15 BELT TENSIONER



A4722001570

\$599



DETROIT™

TWO 20L DETROIT PLATINUM PLUS

2 x 23512733



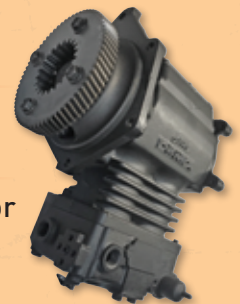
TWO FOR
\$258

DETROIT SERIES 60 COMPRESSOR EGR AND LEGACY

SERIES 60 EGR

\$1,099

R23536774 1 x Air compressor



SERIES 60 LEGACY

\$1,499

R23522123 Air compressor

23505248 FP gasket **\$3.92**

23505249 Coupling **\$16.50**

8929299 Air compressor
MT gasket **\$16.40**



18962FBG

CABIN SHOCK ABSORBER –
REAR FH/FM

\$79

26661FBG

CABIN SHOCK ABSORBER –
REAR FH/FM

\$229



44381FBG

CAB TILT PUMP – FL

\$399



VMEH670260RH

ELECTRIC MIRROR HEATED –
RH FH/FM

\$199

VMEH670260LH

ELECTRIC MIRROR HEATED –
LH FH/FM

\$199



224113DOM

HEADLIGHT INSERT –
F/FH/FL/FM

\$99



224440DOM

TURN SIGNAL LAMP –
F/FH/FL/FM

\$39

Airbags

20882FBG

SUITABLE FOR
MERCEDES BENZ TRUCK

\$59

20644FBG

SUITABLE FOR
MERCEDES BENZ/VOLVO BUS

\$49

20896FBG

SUITABLE FOR
SCANIA 3 SERIES

\$69

20897FBG

SUITABLE FOR
SCANIA BUS

\$69

20185FBG

SUITABLE FOR
IVECO EUROTECH

\$99



Brakes

10005FBG

SUITABLE FOR
ROTOR – SCANIA TRUCK F/R

\$169

18653FBG

SUITABLE FOR
ROTOR – SCANIA BUS FRONT

\$189

35339FBG

SUITABLE FOR
ROTOR – IVECO STRALIS

\$269

29157FBG

SUITABLE FOR
ROTOR – DAF REAR

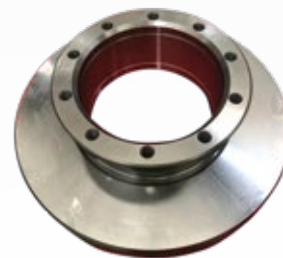
\$199



16778FBG

BRAKE PADS – VOLVO

\$199



16666FBG

BRAKE PADS – BPW DAF IVECO/BENZ/SCANIA

\$129



Engine Mounts



05922FBG

SCANIA 3 SERIES

\$39

44742FBG

VOLVO REAR – EARLY FH/FM

\$249

43672FBG

VOLVO REAR – LATE FH/FM

\$249

27523FBG

SUITABLE FOR
MERCEDES BENZ FRONT SK

\$129

15479FBG

SUITABLE FOR
MERCEDES BENZ ACTROS

\$129



Re-man Alternator

51.26101.9270

Suits TGX, TGS,
D2066, D2676,
TGM with D0836

\$759



Air Filter Outer

81.08405.0021

Suits TGS, TGX

\$199



Air Filter Inner

81.08405.0017

Suits TGS, TGX

\$199



Coolant Pre-mix SI-OAT 20L

NF40.11

\$199

Coolant Pre-mix SI-OAT 205L

NF40.15

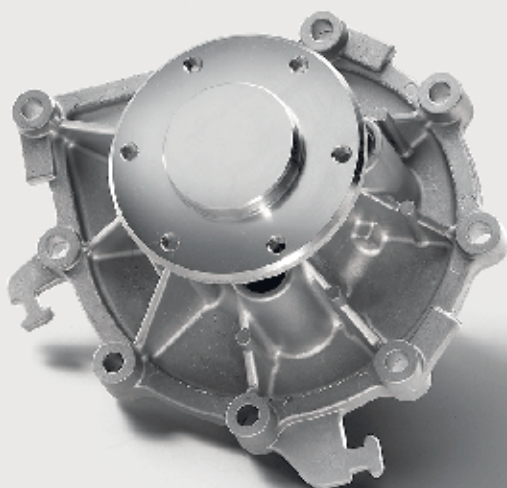
\$1,899

Coolant Pre-mix Si-Oat 1000L

NF40.61

\$7,999

Re-man Water Pump



51.06500.9669
Suits D0836

\$699

51.06500.9694
Suits D2066,
D2676

\$639

51.06500.9089
Suits D2876

\$1,499



King Pin Kit

81.44205.6034

Suits A66, A76, A80
buses, some TGM

\$1,199

81.44205.6037

Suits
TGS, TGX

\$1,199

81.44205.6013

Suits buses
with V9-75

\$699



Re-man Power Steer Pump

81.47101.9136

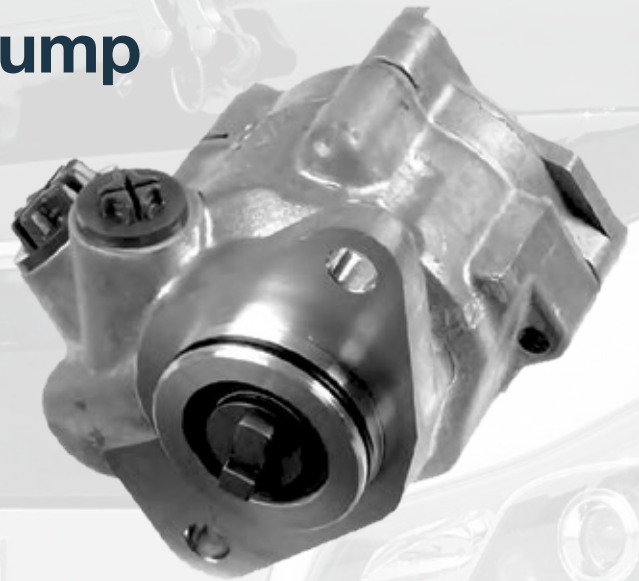
Suits TGX

\$699

81.47101.9137

Suits TGA, TGM

\$799



Re-Man Starter Motor

51.26201.9284

Suits TGS, TGX,
D2066, D2676

\$999

A/C Compressor

51.77970.7028

Suits TGS, TGX,
TGA, TGM

\$1,999

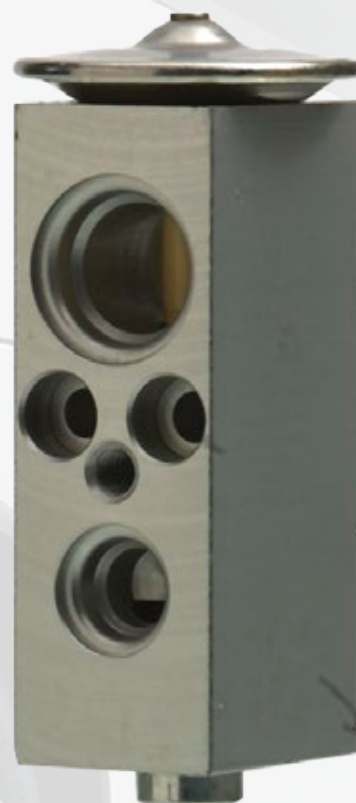


Receiver Drier

81.61910.6045

Suits TGS, TGX,
TGA, TGM

\$199



Expansion Valve

81.61967.0020

Suits TGA, TGS,
TGX, TGM

\$259



PARTICIPATING DEALERS ONLY

Whangarei	All Truck Repairs Ltd	09 430 0803
Auckland	Penske New Zealand	0800 782 762
Hamilton	White Bros Panelworks Ltd	07 843 2929
Tauranga	Penske New Zealand	0800 828 878
Taupo	Dudley Mechanical and Parts	07 377 2411
New Plymouth	Ross Graham Motors	06 755 2150
Napier	J Young Motors Ltd	06 836 6126
Whanganui	Mobile Mechanical Solutions	0800 662 634
Palmerston North	Mobile Mechanical Solutions	0800 662 634
Wellington	Hydradiesel Engineering Ltd	04 939 6204
Nelson	Lloyd Heslops Motors	03 543 9400
Christchurch	Penske New Zealand	0800 628 782
Timaru	NJ & DM Repairs Limited	027 473 3135
Dunedin	Commercial Vehicle Centre	03 455 6449
Invercargill	Commercial Vehicle Centre	03 215 8250
Queenstown	Queenstown Commercial Vehicle	03 442 8203

Available from your participating Western Star and MAN Truck and Bus Dealers. Prices exclude GST and are valid from 1st July 2020 to 31st October 2020. Prices and specifications are subject to change without notice and do not include freight. Images are for illustration purposes only – actual products may differ from shown. Penske Commercial Vehicles reserves the right to correct printing errors.

MAN Genuine Parts

July – October 2020

ENGINEERED TO SAVE YOU MONEY ►

