



Allagash Wilderness Waterway Tramway Carry NFCT Waterway Work Trip July 15-17

Introduction:

This is the first season that the NFCT will have an Allagash Stewardship Intern Crew. This will be a two person crew. Allagash Interns will receive the same degree of pre-season training as all of our field interns. They will then spend the next seven weeks working in the Allagash Wilderness Waterway with the guidance of the Maine Bureau of Public Land Staff and Allagash Rangers. The Maine Bureau of Public Lands has secured Maine Recreation Trail Program funds to make this exciting collaboration possible. We look forward to our work in this region and hope that you can join us.

Driving Directions and Meeting Location:

Drive north, and then drive north some more. The [Allagash](#) is up there, but well worth the trip. Rich in history, lore, and beauty the Allagash has inspire many to make the pilgrimage to its waters and has been an amazing way to cap off a once in a lifetime adventure for many Through Paddlers.

Entrance fees will be waived for those volunteering on the Tramway Carry WWT. Many enter the Allagash Wilderness Waterway via Greenville, Maine. After Greenville you will enter the land of the logging road. If entering from this direction you will follow the Kokadjo/Lilly Bay Road, the Golden Road, and Telos Road. I recommend using a Maine Gazetteer from Delorme, GPS, or similar location tools to keep you heading in the right direction. We can also work with all volunteers to develop a car pool or caravan if anyone is interested. Contact Walter Opuszynski (walter@northernforestcanoetrai.org or (802)496-2285 x2) if you are having any trouble planning your route.

Follow this link for a [Google Map of the project](#).

Camping and Facilities:

We will be camping at the Lock Dam site. This site is considered primitive. The Allagash Stewardship Interns will be staying at an old cabin that will have a privy for use. At this site there are locations where tents can be set up. By the time of the

Waterway Work Trip the Allagash Interns will have set up a comfortable base camp where meals will be prepared. We will also have the opportunity to have camp fires. It is recommended that you bring camping gear with you. If you have any camping gear needs please contact NFCT Trail Director, Walter Opuszynski at walter@northernforestcanoetrail.org or by dialing (802)496-2285 x2, we may be able to lend you what you need.

We will provide anti-bacterial gel and toilet paper, please bring all other sanitary items you may need.

Food:

The cost of this WWT goes towards purchasing food for the NFCT interns and volunteers. NFCT interns will prepare meals. Meals will range from dutch oven pizza to chocolate chip pancakes and everything in between. We will have ample drinking water available as well as a variety of powdered drink mixes. We will also have tea and coffee available.

What to Bring:

- Personal camping gear (include rain gear, a tent, eating utensils, flashlight, etc.)
- Work Gloves
- Water Bottle
- Paddling Gear (If you are interested in paddling opportunities)

Tools will be provided, although extra shovels, buckets, or mattocks could be helpful
Food will be provided by the NFCT (Please notify us of any food preferences/allergies)

Paddling:

There will be group paddling opportunities weaved into the WWT, as well as time for solo pursuits at the end of the day. Each day will contain an over-water commute to the job site. These will not be guided tours as our NFCT Interns are not trained or certified guides although they will have Wilderness First Aid Certification and open/fast water paddle skills and rescue training. We will decide as a group the nature of the group paddling opportunities. We can work as a group to create different paddles to meet people's abilities and comfort level. If you have any paddling needs or questions please contact NFCT Trail Director, Walter: walter@northernforestcanoetrail.org (802)496-2285 x2

Project Details:

The Tramway Carry parallels the remains of an industrial conveyor system designed to carry logs from Eagle Lake to Chamberlain Lake where they would then work their way to the mills in Bangor. Since the shift of transportation methods for logging changing from water corridors to roadways the Tramway Carry has been utilized as a recreational corridor. Because of the terrain's high water table and the type of soils that the Tramway Carry is comprised of, the tread can be rather muddy for a good portion of the paddling season. This has caused a difficult walking surface to develop. Trail users have been causing this condition to spread by walking on the outskirts of the mud. Our project will establish a designated and enticing trail tread.

There will be approximately 1,000 feet of stone and gravel causeway that will need to be constructed on the historic Tramway Carry.

During the winter of 2010-2011 the Allagash Rangers have been moving loads of gravel across Chamberlain Lake to use for our Tramway Carry Project. The gravel has begun its journey at the Upper Crow's Nest campsite and in all the Rangers have done 48 seven mile long round trips to the southern end of the Tramway Carry.



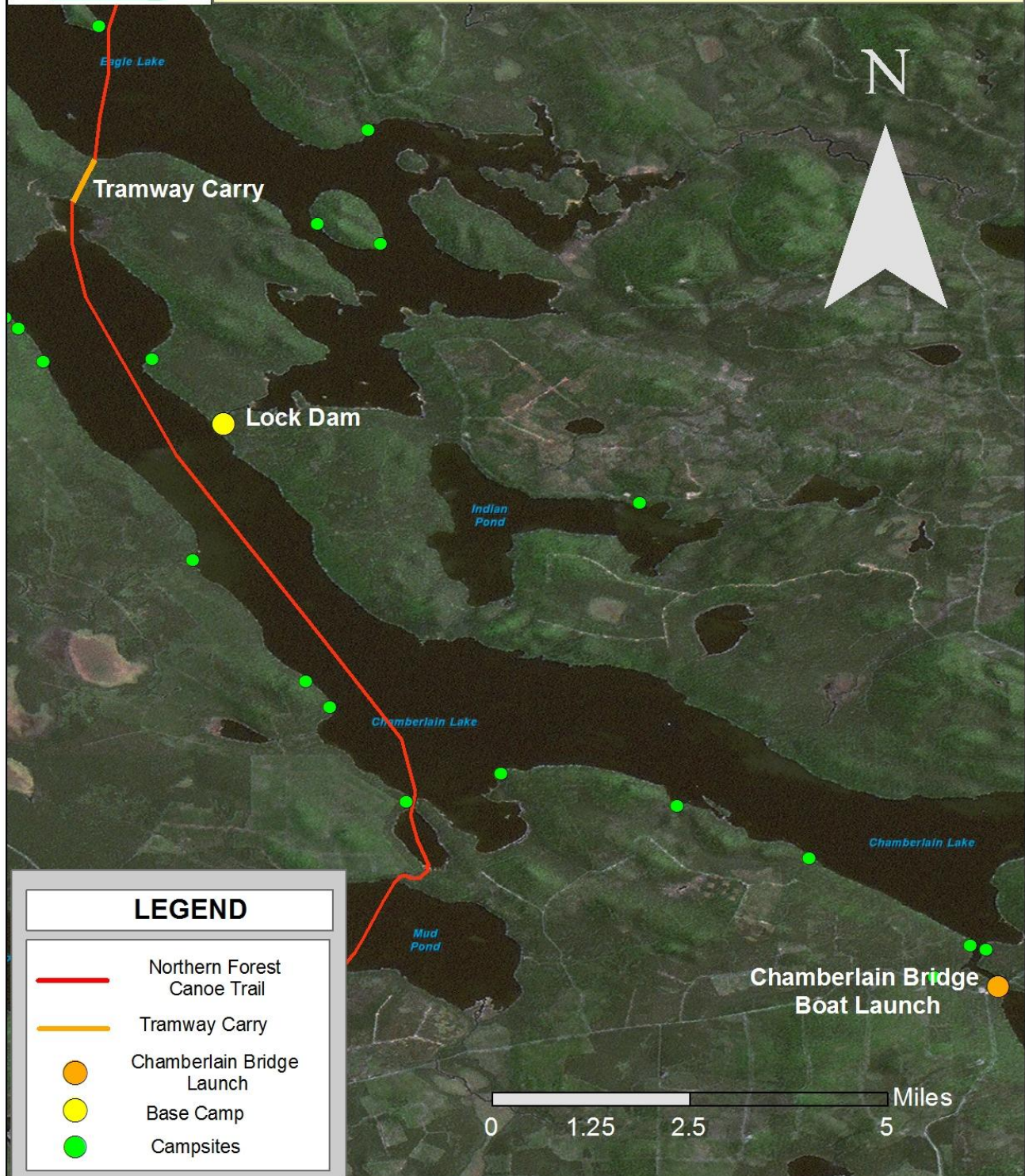
Allagash Ranger delivering gravel to the southern end of the Tramway Carry, winter 2010.

We will be using a power wheelbarrow to move that gavel along the carry and hand tools to place border rock and fill in the pathway.



Allagash Wilderness Waterway

Tramway Carry Project



Allagash-Tramway Carry **Waterway Work Trip Schedule**

Friday July 15, 2011

2 PM- It is important that volunteers arrive at the Chamberlain Bridge as close to 2 PM as possible. Please contact Walter, NFCT Trail Director, if you need to arrange a different time. We will be meeting at the boat launch as a group and paddling to the campsite.

6 PM- Dinner will be prepared around 6:00. Please inform us if you are planning on attending Friday's dinner so that we are adequately prepared. Also, make us aware of any food requirements you may have.

7 PM- Feel free to take advantage of all the local paddling opportunities!

Saturday July 16, 2011

8AM-9AM Breakfast

9AM-12PM Worksite Projects

12PM-1PM Lunch

1PM-3PM Worksite Projects

3PM-6PM Group Paddle

6PM-7PM Dinner

7PM- Evening paddle

Sunday July 17, 2011

8AM-9AM Breakfast

9AM-12PM Worksite Projects

12PM-1PM Lunch

1PM-2PM Wrap-up

****Schedule and project descriptions may change. You will be notified as we get closer to the WWT if this happens****

Please fill out and return all Waterway Work Trip Forms at your earliest convenience. Forms will be distributed once you are officially enrolled in the WWT.