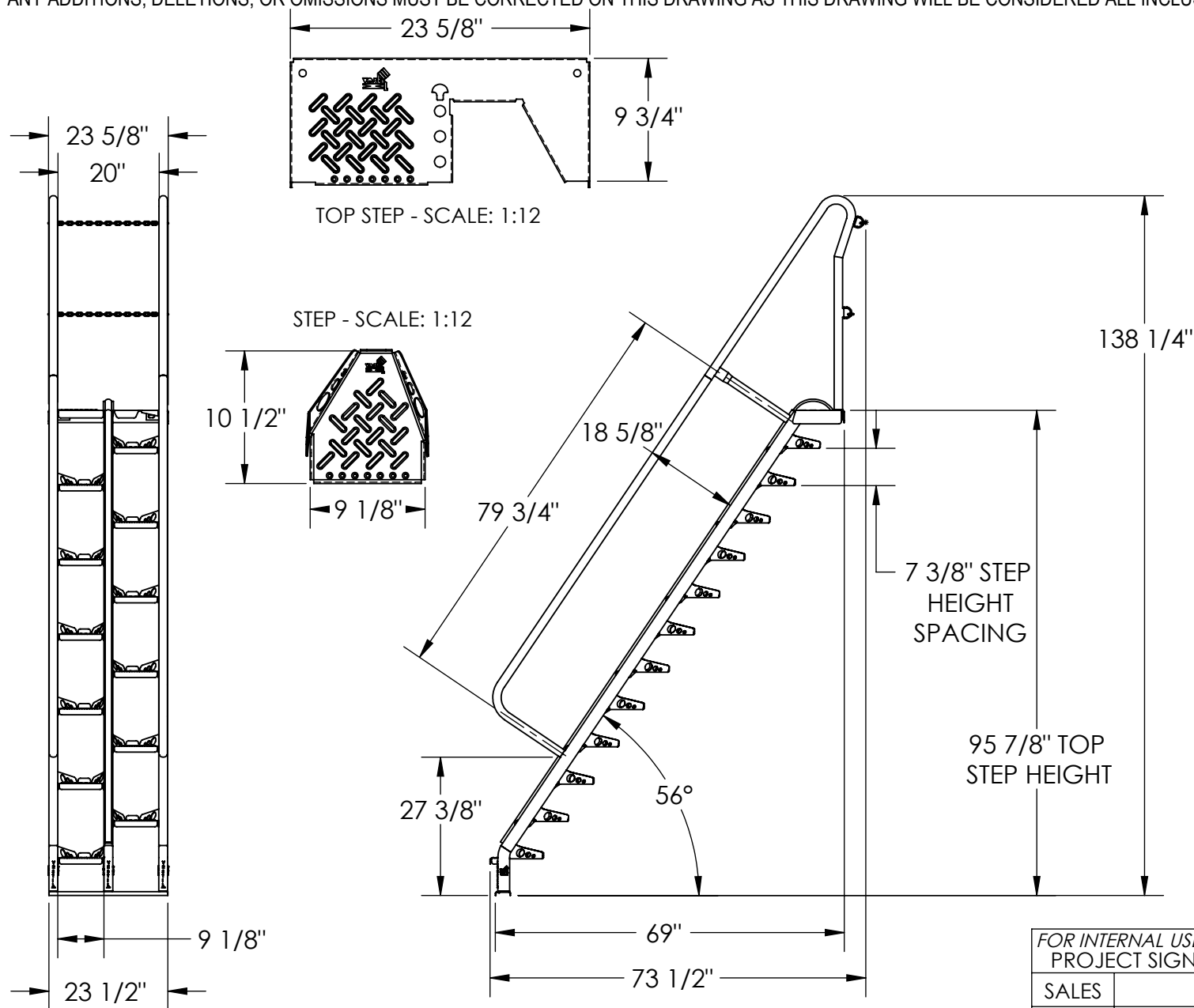


# ALTERNATING TREAD STAIR - ATS-8-56

APPROX WEIGHT: 208.17 lbs.  
DOES NOT INCLUDE WEIGHT OF POWER OR PACKAGING!!!

\*\*\*ANY ADDITIONS, DELETIONS, OR OMISSIONS MUST BE CORRECTED ON THIS DRAWING AS THIS DRAWING WILL BE CONSIDERED ALL INCLUSIVE\*\*\*



|   |  |
|---|--|
| FOR INTERNAL USE ONLY<br>PROJECT SIGN OFF |  |
| SALES                                     |  |
| ENG.                                      |  |
| FAB.                                      |  |
| POWER                                     |  |

ALL GRAPHICS PROVIDED ARE FOR REFERENCE ONLY. IF CERTAIN DIMENSIONS ARE CRITICAL PLEASE VERIFY THOSE DIMENSIONS WITH YOUR SALESPERSON

DIMENSION TOLERANCE ± 1/4"

## STANDARD FEATURES

- MODEL NUMBER: ATS-8-56
- CLIMB ANGLE: 56°
- NUMBER OF STEPS: 13 (INCLUDING TOP STEP)
- TOP STEP HEIGHT: 95 7/8"
- STEP HEIGHT SPACING: 7 3/8"
- HANDRAIL HEIGHT: 18 5/8"
- OVERALL HEIGHT: 138 1/4"
- OVERALL LENGTH: 73 1/2"
- OVERALL WIDTH: 23 1/2"
- CHAIN GATES AT TOP STEP
- RUBBER BUMPER STRIP
- MAX CAPACITY IS 350 LBS
- TOUGH BAKED IN POWDER COATED YELLOW FINISH

## SPECIAL FEATURES

NONE

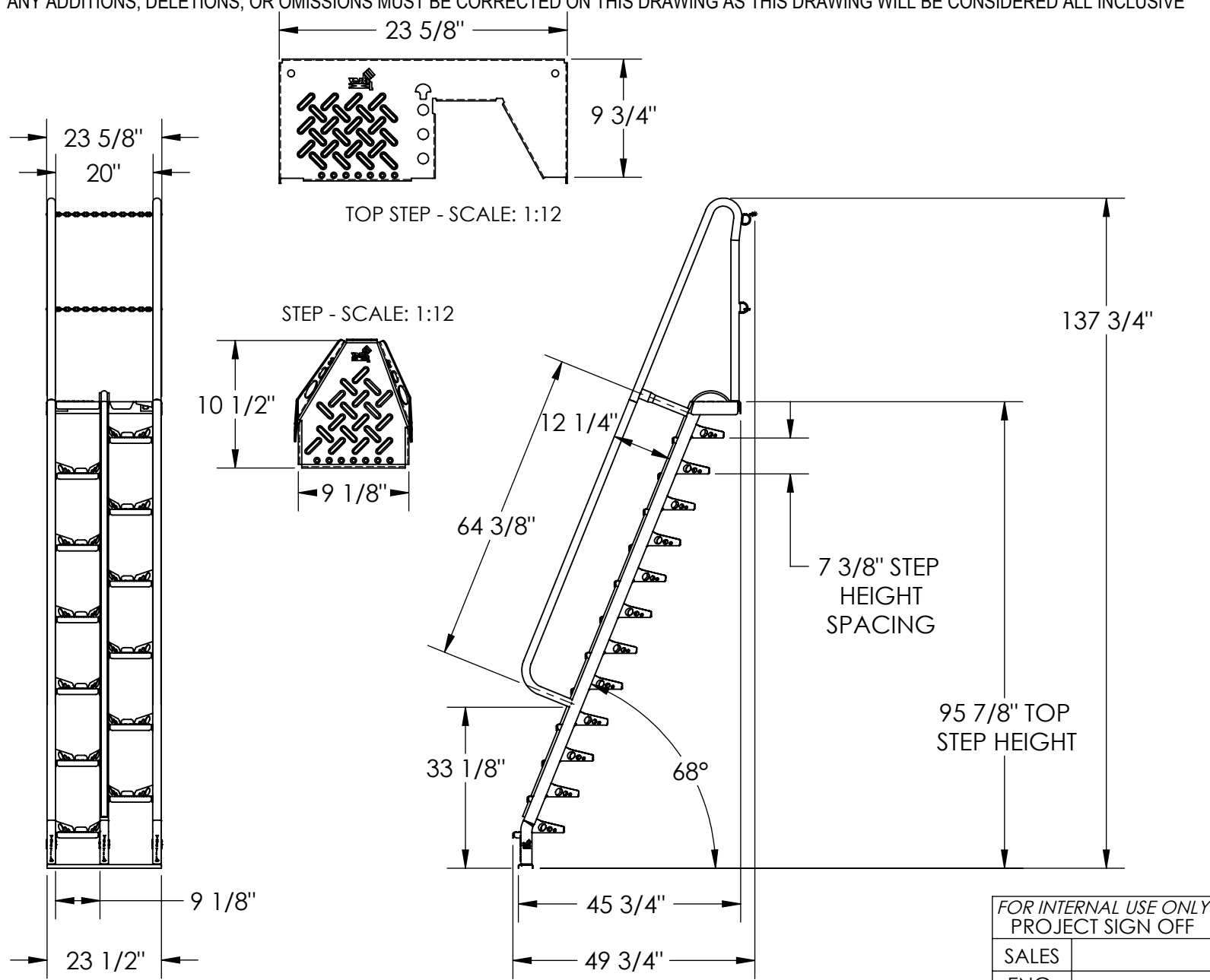
|  |  |  |
|--|--|--|
| <b>APPROVAL</b>  | I, THE UNDERSIGNED, AGREE THAT THE PRODUCT AS REPRESENTED SATISFIES DESIGN AND DIMENSION REQUIREMENTS. I ALSO ACKNOWLEDGE MY DUTY TO CONFIRM PRODUCT AND INSTALLATION COMPLIANCE WITH ALL APPLICABLE FEDERAL, STATE AND LOCAL REGULATIONS AND STANDARDS. |  |
|  | <b>ANY MODIFIED UNITS ARE NON-RETURNABLE</b>   |  |
|  | [ ] As drawn [ ] As marked   |  |
|  | Signed: _____ Date: _____  |  |
| Printed Name: _____  |  |  |
| LEAD TIME WILL START UPON RECEIPT OF SIGNED APPROVAL DRAWING |  |  |

|                       |             |            |
|-----------------------|-------------|------------|
| DISTRIBUTOR'S NAME:   |             | P.O.#      |
| HOF EQUIPMENT COMPANY |             | X          |
| PH: 888-990-1150      |             | W.O.#      |
| DRAWN BY: B.WOOD      |             | X          |
| DATE: 4/22/2009       | SALES: X    |            |
| REFERENCE: X          | SCALE: 1:30 | FILE NAME: |
| QUOTED LEAD TIME: X   | QUOTE # X   | 44-007-244 |

# ALTERNATING TREAD STAIR - ATS-8-68

APPROX WEIGHT: 192.37 lbs.  
DOES NOT INCLUDE WEIGHT OF POWER OR PACKAGING!!!

\*\*\*ANY ADDITIONS, DELETIONS, OR OMISSIONS MUST BE CORRECTED ON THIS DRAWING AS THIS DRAWING WILL BE CONSIDERED ALL INCLUSIVE\*\*\*



|   |  |
|---|--|
| FOR INTERNAL USE ONLY<br>PROJECT SIGN OFF |  |
| SALES                                     |  |
| ENG.                                      |  |
| FAB.                                      |  |
| POWER                                     |  |

ALL GRAPHICS PROVIDED ARE FOR REFERENCE ONLY. IF CERTAIN DIMENSIONS ARE CRITICAL PLEASE VERIFY THOSE DIMENSIONS WITH YOUR SALESPERSON

- STANDARD FEATURES**  
 MODEL NUMBER: ATS-8-68  
 CLIMB ANGLE: 68°  
 NUMBER OF STEPS: 13  
 (INCLUDING TOP STEP)  
 TOP STEP HEIGHT: 95 7/8"  
 STEP HEIGHT SPACING: 7 3/8"  
 HANDRAIL HEIGHT: 12 1/4"  
 OVERALL HEIGHT: 137 3/4"  
 OVERALL LENGTH: 49 3/4"  
 OVERALL WIDTH: 23 1/2"  
 CHAIN GATES AT TOP STEP  
 RUBBER BUMPER STRIP  
 MAX CAPACITY IS 350 LBS  
 TOUGH BAKED IN POWDER  
 COATED YELLOW FINISH

**SPECIAL FEATURES**  
 NONE

DIMENSION TOLERANCE ± 1/4"

**APPROVAL**

I, THE UNDERSIGNED, AGREE THAT THE PRODUCT AS REPRESENTED SATISFIES DESIGN AND DIMENSION REQUIREMENTS. I ALSO ACKNOWLEDGE MY DUTY TO CONFIRM PRODUCT AND INSTALLATION COMPLIANCE WITH ALL APPLICABLE FEDERAL, STATE AND LOCAL REGULATIONS AND STANDARDS.

**ANY MODIFIED UNITS ARE NON-RETURNABLE**

[ ] As drawn [ ] As marked

Signed: \_\_\_\_\_ Date: \_\_\_\_\_

Printed Name: \_\_\_\_\_

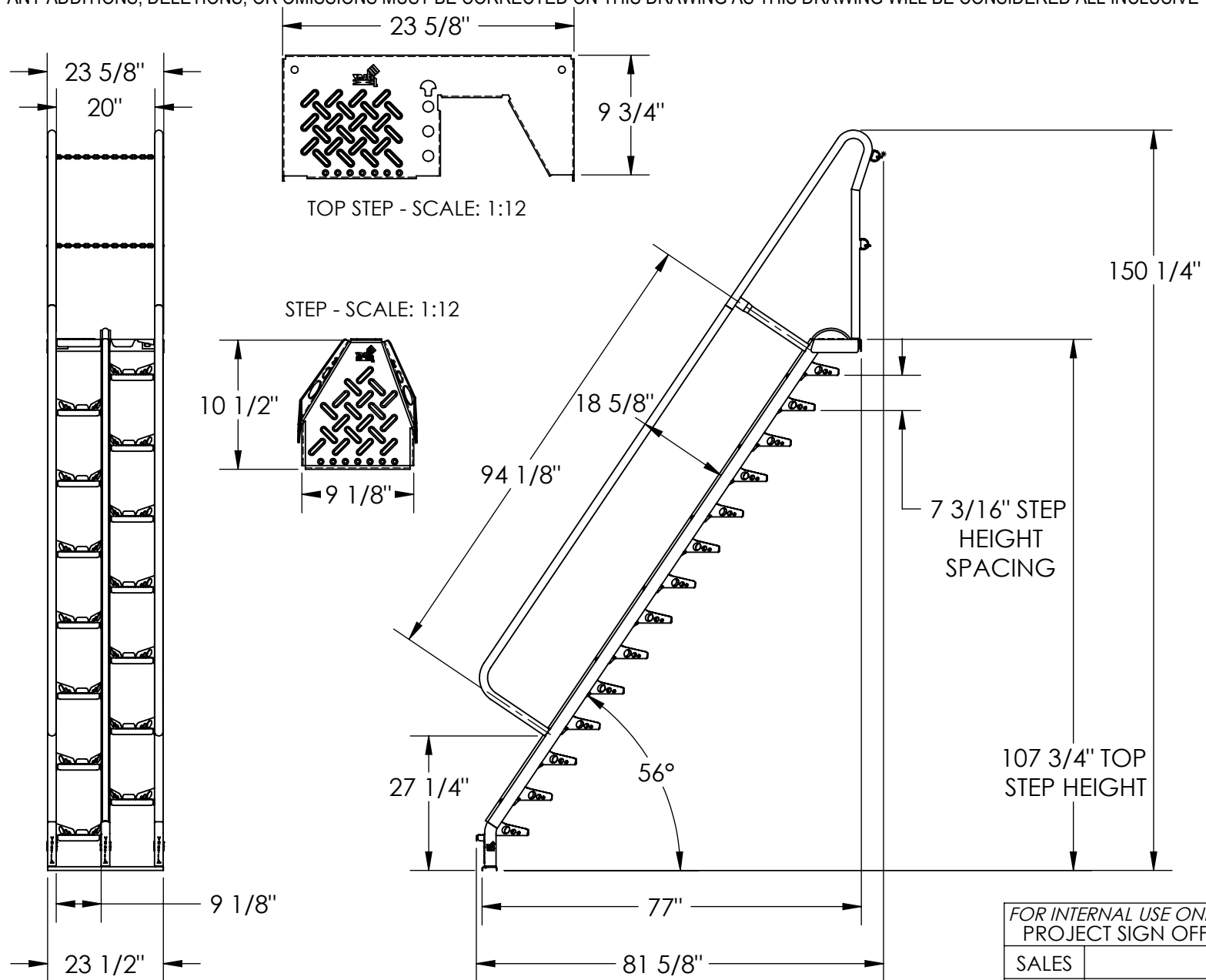
LEAD TIME WILL START UPON RECEIPT OF SIGNED APPROVAL DRAWING

|                       |             |            |
|-----------------------|-------------|------------|
| DISTRIBUTOR'S NAME:   |             | P.O.#      |
| HOF EQUIPMENT COMPANY |             | X          |
| PH: 888-990-1150      |             | W.O.#      |
| DRAWN BY: B.WOOD      |             | X          |
| DATE: 4/22/2009       | SALES: X    |            |
| REFERENCE: X          | SCALE: 1:30 | FILE NAME: |
| QUOTED LEAD TIME: X   | QUOTE # X   | 44-007-245 |

# ALTERNATING TREAD STAIR - ATS-9-56

APPROX WEIGHT: 228.76 lbs.  
DOES NOT INCLUDE WEIGHT OF POWER OR PACKAGING!!!

\*\*\*ANY ADDITIONS, DELETIONS, OR OMISSIONS MUST BE CORRECTED ON THIS DRAWING AS THIS DRAWING WILL BE CONSIDERED ALL INCLUSIVE\*\*\*



ALL GRAPHICS PROVIDED ARE FOR REFERENCE ONLY. IF CERTAIN DIMENSIONS ARE CRITICAL PLEASE VERIFY THOSE DIMENSIONS WITH YOUR SALESPERSON

- STANDARD FEATURES**
- MODEL NUMBER: ATS-9-56
  - CLIMB ANGLE: 56°
  - NUMBER OF STEPS: 15 (INCLUDING TOP STEP)
  - TOP STEP HEIGHT: 107 3/4"
  - STEP HEIGHT SPACING: 7 3/16"
  - HANDRAIL HEIGHT: 18 5/8"
  - OVERALL HEIGHT: 150 1/4"
  - OVERALL LENGTH: 81 5/8"
  - OVERALL WIDTH: 23 1/2"
  - CHAIN GATES AT TOP STEP
  - RUBBER BUMPER STRIP
  - MAX CAPACITY IS 350 LBS
  - TOUGH BAKED IN POWDER COATED YELLOW FINISH

**SPECIAL FEATURES**  
NONE

DIMENSION TOLERANCE ± 1/4"

|   |  |
|---|--|
| FOR INTERNAL USE ONLY<br>PROJECT SIGN OFF |  |
| SALES                                     |  |
| ENG.                                      |  |
| FAB.                                      |  |
| POWER                                     |  |

**APPROVAL**

I, THE UNDERSIGNED, AGREE THAT THE PRODUCT AS REPRESENTED SATISFIES DESIGN AND DIMENSION REQUIREMENTS. I ALSO ACKNOWLEDGE MY DUTY TO CONFIRM PRODUCT AND INSTALLATION COMPLIANCE WITH ALL APPLICABLE FEDERAL, STATE AND LOCAL REGULATIONS AND STANDARDS.

**ANY MODIFIED UNITS ARE NON-RETURNABLE**

As drawn       As marked

Signed: \_\_\_\_\_ Date: \_\_\_\_\_

Printed Name: \_\_\_\_\_

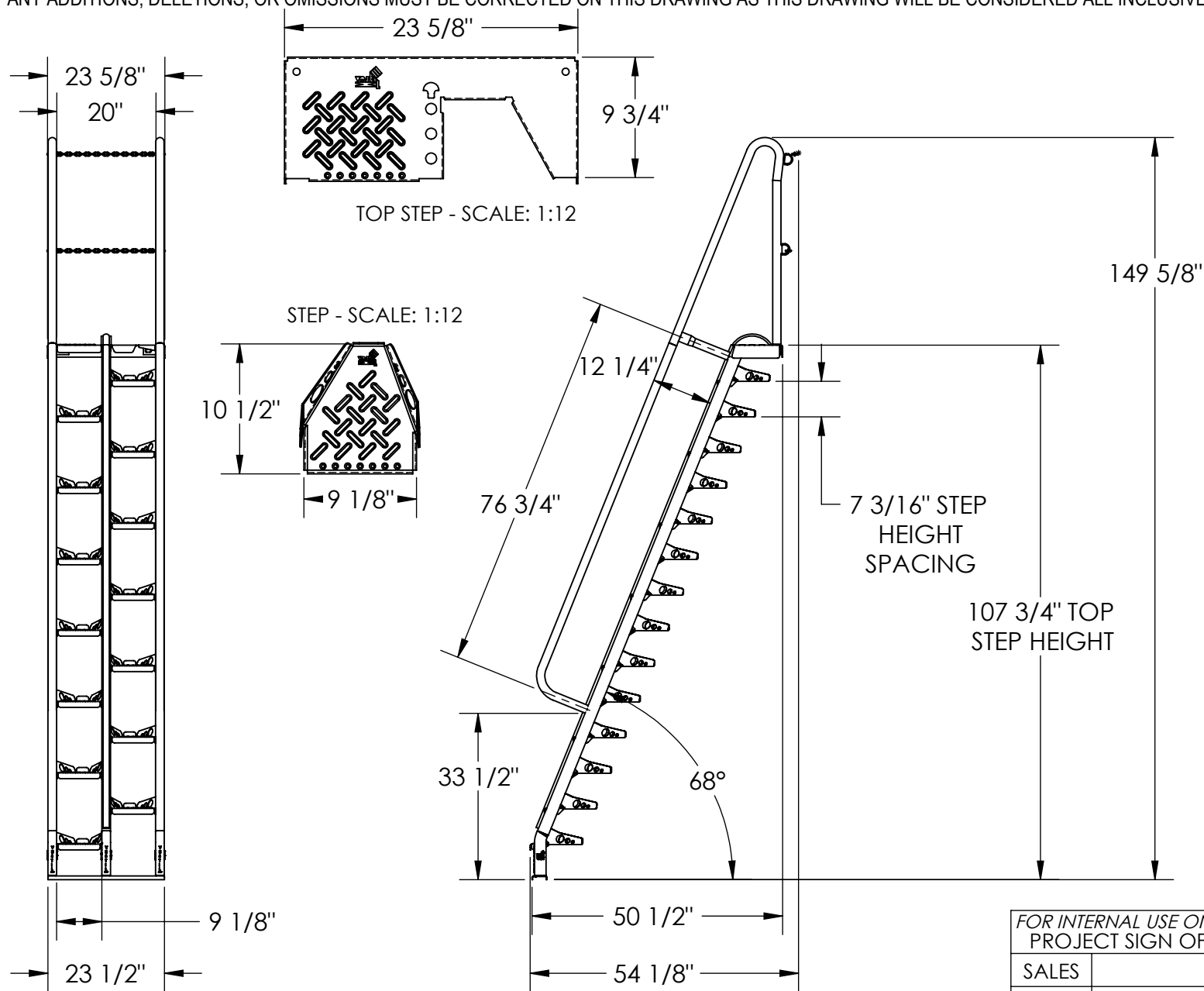
*LEAD TIME WILL START UPON RECEIPT OF SIGNED APPROVAL DRAWING*

|                       |             |            |
|-----------------------|-------------|------------|
| DISTRIBUTOR'S NAME:   |             | P.O.#      |
| HOF EQUIPMENT COMPANY |             | X          |
| PH: 888-990-1150      |             | W.O.#      |
| DRAWN BY: B. WOOD     |             | X          |
| DATE: 4/22/2009       | SALES: X    |            |
| REFERENCE: X          | SCALE: 1:30 | FILE NAME: |
| QUOTED LEAD TIME: X   | QUOTE # X   | 44-007-242 |

# ALTERNATING TREAD STAIR - ATS-9-68

APPROX WEIGHT: 211.37 lbs.  
DOES NOT INCLUDE WEIGHT OF POWER OR PACKAGING!!!

\*\*\*ANY ADDITIONS, DELETIONS, OR OMISSIONS MUST BE CORRECTED ON THIS DRAWING AS THIS DRAWING WILL BE CONSIDERED ALL INCLUSIVE\*\*\*



| FOR INTERNAL USE ONLY<br>PROJECT SIGN OFF |  |
|---|--|
| SALES                                     |  |
| ENG.                                      |  |
| FAB.                                      |  |
| POWER                                     |  |

ALL GRAPHICS PROVIDED ARE FOR REFERENCE ONLY. IF CERTAIN DIMENSIONS ARE CRITICAL PLEASE VERIFY THOSE DIMENSIONS WITH YOUR SALESPERSON

DIMENSION TOLERANCE ± 1/4"

## STANDARD FEATURES

- MODEL NUMBER: ATS-9-68
- CLIMB ANGLE: 68°
- NUMBER OF STEPS: 15 (INCLUDING TOP STEP)
- TOP STEP HEIGHT: 107 3/4"
- STEP HEIGHT SPACING: 7 3/16"
- HANDRAIL HEIGHT: 12 1/4"
- OVERALL HEIGHT: 149 5/8"
- OVERALL LENGTH: 54 1/8"
- OVERALL WIDTH: 23 1/2"
- CHAIN GATES AT TOP STEP
- RUBBER BUMPER STRIP
- MAX CAPACITY IS 350 LBS
- TOUGH BAKED IN POWDER COATED YELLOW FINISH

## SPECIAL FEATURES

NONE

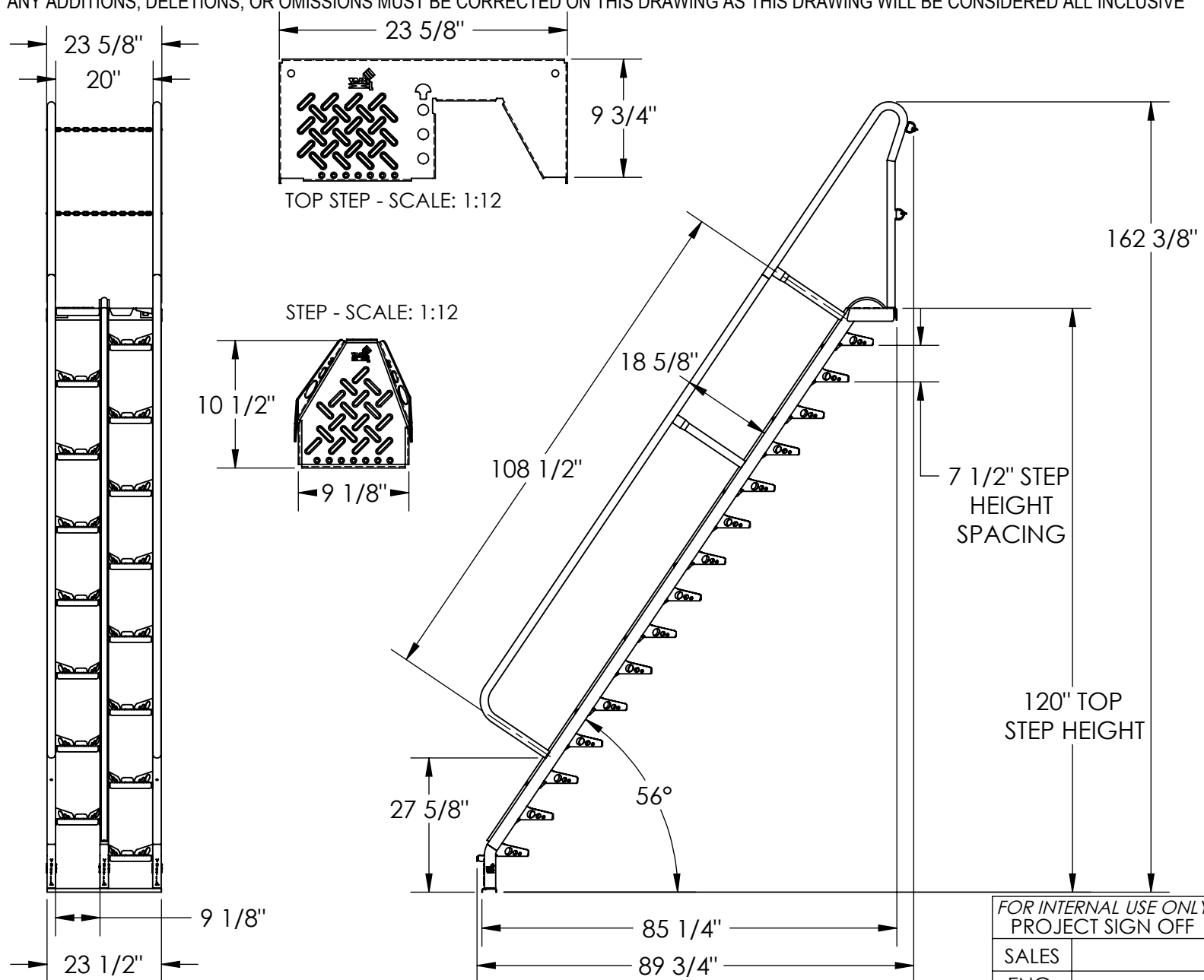
|  |  |  |
|--|--|--|
| <b>APPROVAL</b>  | I, THE UNDERSIGNED, AGREE THAT THE PRODUCT AS REPRESENTED SATISFIES DESIGN AND DIMENSION REQUIREMENTS. I ALSO ACKNOWLEDGE MY DUTY TO CONFIRM PRODUCT AND INSTALLATION COMPLIANCE WITH ALL APPLICABLE FEDERAL, STATE AND LOCAL REGULATIONS AND STANDARDS. |  |
|  | <b>ANY MODIFIED UNITS ARE NON-RETURNABLE</b>   |  |
|  | [ ] As drawn [ ] As marked   |  |
|  | Signed: _____ Date: _____  |  |
|  | Printed Name: _____  |  |
| LEAD TIME WILL START UPON RECEIPT OF SIGNED APPROVAL DRAWING |  |  |

|                       |           |            |
|-----------------------|-----------|------------|
| DISTRIBUTOR'S NAME:   |           | P.O.#      |
| HOF EQUIPMENT COMPANY |           | X          |
| PH: 888-990-1150      |           | W.O.#      |
|                       |           | X          |
| DRAWN BY:             | DATE:     | SALES:     |
| B.WOOD                | 4/22/2009 | X          |
| REFERENCE:            | SCALE:    | FILE NAME: |
| X                     | 1:30      |            |
| QUOTED LEAD TIME:     | QUOTE #   |            |
| X                     | X         | 44-007-243 |

# ALTERNATING TREAD STAIR - ATS-10-56

APPROX WEIGHT: 253.10 lbs.  
DOES NOT INCLUDE WEIGHT OF POWER OR PACKAGING!!!

\*\*\*ANY ADDITIONS, DELETIONS, OR OMISSIONS MUST BE CORRECTED ON THIS DRAWING AS THIS DRAWING WILL BE CONSIDERED ALL INCLUSIVE\*\*\*



|   |  |
|---|--|
| FOR INTERNAL USE ONLY<br>PROJECT SIGN OFF |  |
| SALES                                     |  |
| ENG.                                      |  |
| FAB.                                      |  |
| POWER                                     |  |

ALL GRAPHICS PROVIDED ARE FOR REFERENCE ONLY. IF CERTAIN DIMENSIONS ARE CRITICAL PLEASE VERIFY THOSE DIMENSIONS WITH YOUR SALESPERSON

DIMENSION TOLERANCE ± 1/4"

- STANDARD FEATURES**
- MODEL NUMBER: ATS-10-56
  - CLIMB ANGLE: 56°
  - NUMBER OF STEPS: 16 (INCLUDING TOP STEP)
  - TOP STEP HEIGHT: 120"
  - STEP HEIGHT SPACING: 7 1/2"
  - HANDRAIL HEIGHT: 18 5/8"
  - OVERALL HEIGHT: 162 3/8"
  - OVERALL LENGTH: 89 3/4"
  - OVERALL WIDTH: 23 1/2"
  - CHAIN GATES AT TOP STEP
  - RUBBER BUMPER STRIP
  - MAX CAPACITY IS 350 LBS
  - TOUGH BAKED IN POWDER COATED YELLOW FINISH

**SPECIAL FEATURES**  
NONE

**APPROVAL**

I, THE UNDERSIGNED, AGREE THAT THE PRODUCT AS REPRESENTED SATISFIES DESIGN AND DIMENSION REQUIREMENTS. I ALSO ACKNOWLEDGE MY DUTY TO CONFIRM PRODUCT AND INSTALLATION COMPLIANCE WITH ALL APPLICABLE FEDERAL, STATE AND LOCAL REGULATIONS AND STANDARDS.

**ANY MODIFIED UNITS ARE NON-RETURNABLE**

[ ] As drawn [ ] As marked

Signed: \_\_\_\_\_ Date: \_\_\_\_\_

Printed Name: \_\_\_\_\_

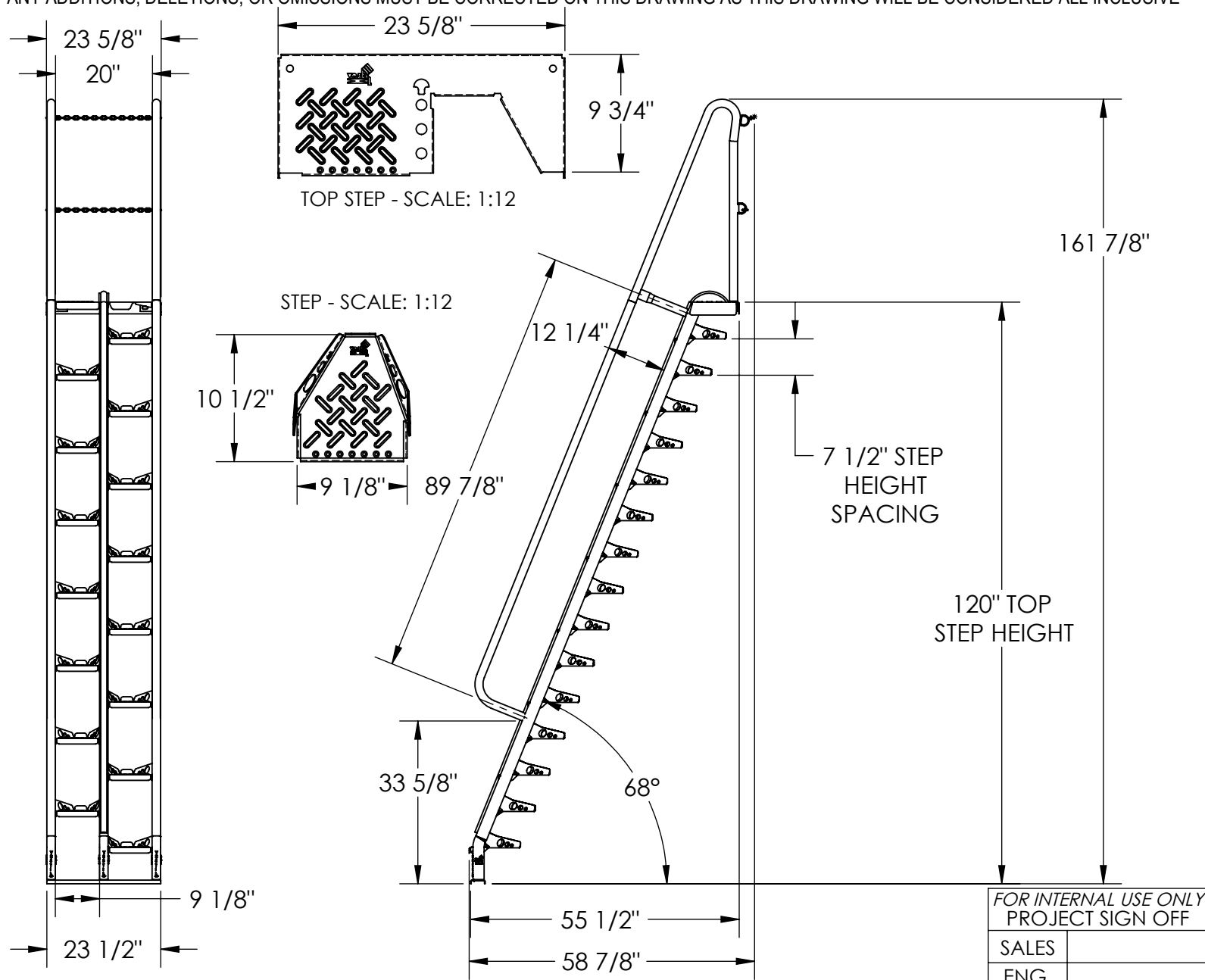
LEAD TIME WILL START UPON RECEIPT OF SIGNED APPROVAL DRAWING

|                       |             |            |
|-----------------------|-------------|------------|
| DISTRIBUTOR'S NAME:   |             | P.O.#      |
| HOF EQUIPMENT COMPANY |             | X          |
| PH: 888-990-1150      |             | W.O.#      |
| DRAWN BY: B. WOOD     |             | X          |
| DATE: 4/22/2009       | SALES: X    |            |
| REFERENCE: X          | SCALE: 1:30 | FILE NAME: |
| QUOTED LEAD TIME: X   | QUOTE # X   | 44-007-240 |

# ALTERNATING TREAD STAIR - ATS-10-68

APPROX WEIGHT: 227.36 lbs.  
DOES NOT INCLUDE WEIGHT OF POWER OR PACKAGING!!!

\*\*\*ANY ADDITIONS, DELETIONS, OR OMISSIONS MUST BE CORRECTED ON THIS DRAWING AS THIS DRAWING WILL BE CONSIDERED ALL INCLUSIVE\*\*\*



ALL GRAPHICS PROVIDED ARE FOR REFERENCE ONLY. IF CERTAIN DIMENSIONS ARE CRITICAL PLEASE VERIFY THOSE DIMENSIONS WITH YOUR SALESPERSON

|   |  |
|---|--|
| FOR INTERNAL USE ONLY<br>PROJECT SIGN OFF |  |
| SALES                                     |  |
| ENG.                                      |  |
| FAB.                                      |  |
| POWER                                     |  |

DIMENSION TOLERANCE ± 1/4"

## STANDARD FEATURES

- MODEL NUMBER: ATS-10-68
- CLIMB ANGLE: 68°
- NUMBER OF STEPS: 16 (INCLUDING TOP STEP)
- TOP STEP HEIGHT: 120"
- STEP HEIGHT SPACING: 7 1/2"
- HANDRAIL HEIGHT: 12 1/4"
- OVERALL HEIGHT: 161 7/8"
- OVERALL LENGTH: 58 7/8"
- OVERALL WIDTH: 23 1/2"
- CHAIN GATES AT TOP STEP
- RUBBER BUMPER STRIP
- MAX CAPACITY IS 350 LBS
- TOUGH BAKED IN POWDER COATED YELLOW FINISH

## SPECIAL FEATURES

NONE

**APPROVAL**

I, THE UNDERSIGNED, AGREE THAT THE PRODUCT AS REPRESENTED SATISFIES DESIGN AND DIMENSION REQUIREMENTS. I ALSO ACKNOWLEDGE MY DUTY TO CONFIRM PRODUCT AND INSTALLATION COMPLIANCE WITH ALL APPLICABLE FEDERAL, STATE AND LOCAL REGULATIONS AND STANDARDS.

**ANY MODIFIED UNITS ARE NON-RETURNABLE**

[ ] As drawn [ ] As marked

Signed: \_\_\_\_\_ Date: \_\_\_\_\_

Printed Name: \_\_\_\_\_

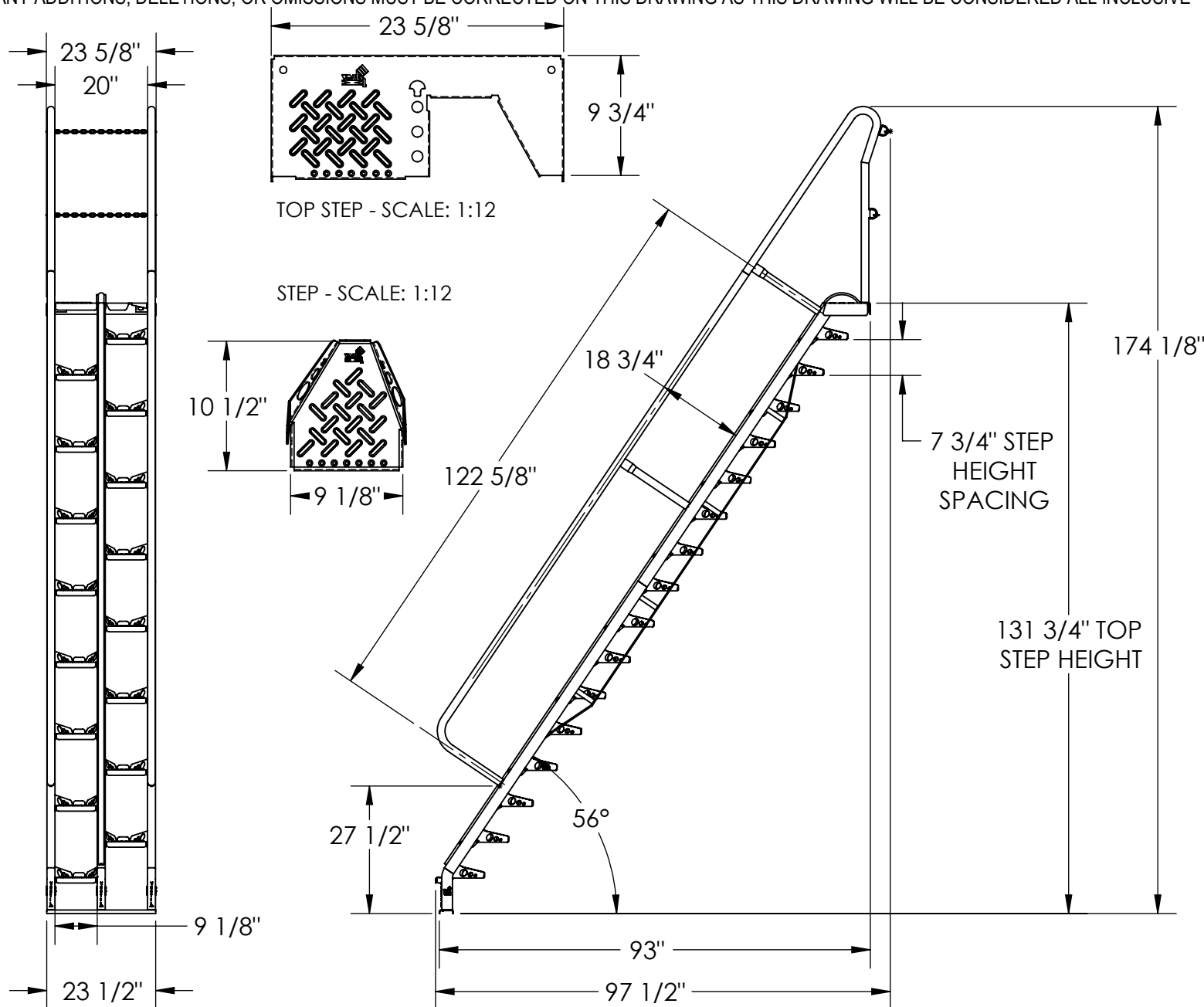
LEAD TIME WILL START UPON RECEIPT OF SIGNED APPROVAL DRAWING

|                       |             |            |
|-----------------------|-------------|------------|
| DISTRIBUTOR'S NAME:   |             | P.O.#      |
| HOF EQUIPMENT COMPANY |             | X          |
| PH: 888-990-1150      |             | W.O.#      |
| DRAWN BY: B. WOOD     |             | X          |
| DATE: 4/22/2009       | SALES: X    |            |
| REFERENCE: X          | SCALE: 1:30 | FILE NAME: |
| QUOTED LEAD TIME: X   | QUOTE # X   | 44-007-241 |

# ALTERNATING TREAD STAIR - ATS-11-56

APPROX WEIGHT: 308.27 lbs.  
DOES NOT INCLUDE WEIGHT OF POWER OR PACKAGING!!!

\*\*\*ANY ADDITIONS, DELETIONS, OR OMISSIONS MUST BE CORRECTED ON THIS DRAWING AS THIS DRAWING WILL BE CONSIDERED ALL INCLUSIVE\*\*\*



ALL GRAPHICS PROVIDED ARE FOR REFERENCE ONLY. IF CERTAIN DIMENSIONS ARE CRITICAL PLEASE VERIFY THOSE DIMENSIONS WITH YOUR SALESPERSON

DIMENSION TOLERANCE ± 1/4"

## STANDARD FEATURES

- MODEL NUMBER: ATS-11-56
- CLIMB ANGLE: 56°
- NUMBER OF STEPS: 17 (INCLUDING TOP STEP)
- TOP STEP HEIGHT: 131 3/4"
- STEP HEIGHT SPACING: 7 3/4"
- HANDRAIL HEIGHT: 18 3/4"
- OVERALL HEIGHT: 174 1/8"
- OVERALL LENGTH: 97 1/2"
- OVERALL WIDTH: 23 1/2"
- CHAIN GATES AT TOP STEP
- RUBBER BUMPER STRIP
- MAX CAPACITY IS 350 LBS
- TOUGH BAKED IN POWDER COATED YELLOW FINISH

## SPECIAL FEATURES

NONE

I, THE UNDERSIGNED, AGREE THAT THE PRODUCT AS REPRESENTED SATISFIES DESIGN AND DIMENSION REQUIREMENTS. I ALSO ACKNOWLEDGE MY DUTY TO CONFIRM PRODUCT AND INSTALLATION COMPLIANCE WITH ALL APPLICABLE FEDERAL, STATE AND LOCAL REGULATIONS AND STANDARDS.

**ANY MODIFIED UNITS ARE NON-RETURNABLE**

As drawn       As marked

Signed: \_\_\_\_\_ Date: \_\_\_\_\_

Printed Name: \_\_\_\_\_

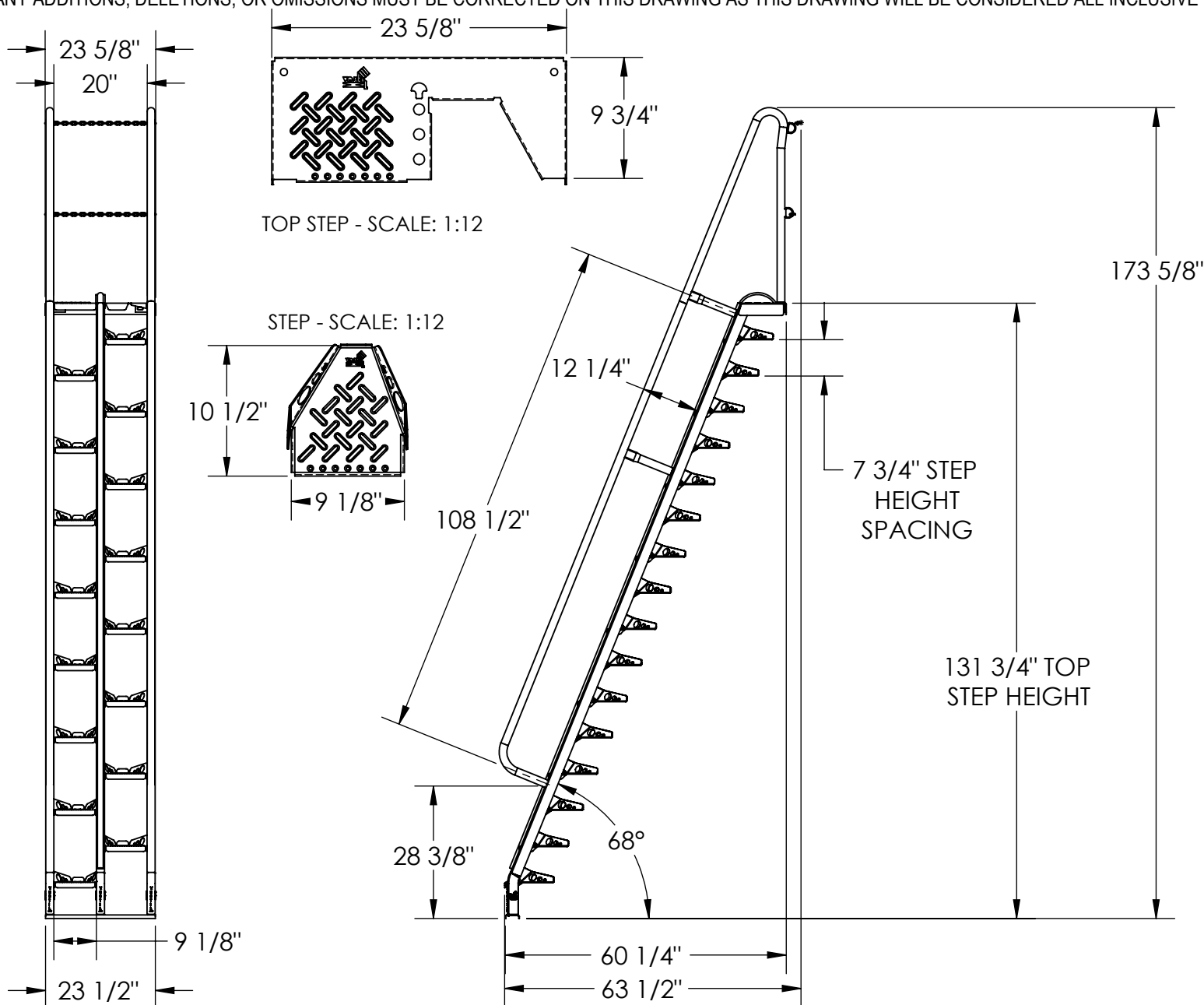
*LEAD TIME WILL START UPON RECEIPT OF SIGNED APPROVAL DRAWING*

|   |  |   |                 |                          |
|---|--|---|-----------------|--------------------------|
| FOR INTERNAL USE ONLY<br>PROJECT SIGN OFF |  | DISTRIBUTOR'S NAME:<br><b>HOF EQUIPMENT COMPANY</b><br>PH: 888-990-1150 |                 | P.O.# X                  |
| SALES                                     |  | DRAWN BY: B. WOOD   | DATE: 4/22/2009 | W.O.# X                  |
| ENG.                                      |  | REFERENCE: X  | SCALE: 1:32     | SALES: X                 |
| FAB.                                      |  | QUOTED LEAD TIME: X   | QUOTE # X       | FILE NAME:<br>44-007-362 |
| POWER                                     |  |   |                 |                          |

# ALTERNATING TREAD STAIR - ATS-11-68

APPROX WEIGHT: 249.15 lbs.  
DOES NOT INCLUDE WEIGHT OF POWER OR PACKAGING!!!

\*\*\*ANY ADDITIONS, DELETIONS, OR OMISSIONS MUST BE CORRECTED ON THIS DRAWING AS THIS DRAWING WILL BE CONSIDERED ALL INCLUSIVE\*\*\*



ALL GRAPHICS PROVIDED ARE FOR REFERENCE ONLY. IF CERTAIN DIMENSIONS ARE CRITICAL PLEASE VERIFY THOSE DIMENSIONS WITH YOUR SALESPERSON

## STANDARD FEATURES

- MODEL NUMBER: ATS-11-68
- CLIMB ANGLE: 68°
- NUMBER OF STEPS: 17 (INCLUDING TOP STEP)
- TOP STEP HEIGHT: 131 3/4"
- STEP HEIGHT SPACING: 7 3/4"
- HANDRAIL HEIGHT: 12 1/4"
- OVERALL HEIGHT: 173 5/8"
- OVERALL LENGTH: 63 1/2"
- OVERALL WIDTH: 23 1/2"
- CHAIN GATES AT TOP STEP
- RUBBER BUMPER STRIP
- MAX CAPACITY IS 350 LBS
- TOUGH BAKED IN POWDER COATED YELLOW FINISH

## SPECIAL FEATURES

NONE

DIMENSION TOLERANCE ± 1/4"

I, THE UNDERSIGNED, AGREE THAT THE PRODUCT AS REPRESENTED SATISFIES DESIGN AND DIMENSION REQUIREMENTS. I ALSO ACKNOWLEDGE MY DUTY TO CONFIRM PRODUCT AND INSTALLATION COMPLIANCE WITH ALL APPLICABLE FEDERAL, STATE AND LOCAL REGULATIONS AND STANDARDS.

**ANY MODIFIED UNITS ARE NON-RETURNABLE**

As drawn       As marked

Signed: \_\_\_\_\_ Date: \_\_\_\_\_

Printed Name: \_\_\_\_\_

LEAD TIME WILL START UPON RECEIPT OF SIGNED APPROVAL DRAWING

|   |  |   |                 |                          |
|---|--|---|-----------------|--------------------------|
| FOR INTERNAL USE ONLY<br>PROJECT SIGN OFF |  | DISTRIBUTOR'S NAME:<br><b>HOF EQUIPMENT COMPANY</b><br>PH: 888-990-1150 |                 | P.O.# X                  |
| SALES                                     |  | DRAWN BY: BCN   | DATE: 4/22/2009 | W.O.# X                  |
| ENG.                                      |  | REFERENCE: X  | SCALE: 1:32     | SALES: X                 |
| FAB.                                      |  | QUOTED LEAD TIME: X   | QUOTE # X       | FILE NAME:<br>44-007-358 |
| POWER                                     |  |   |                 |                          |