

ROWLAND

EMERGENCY AND
SPECIALTY VEHICLES





Table of Contents

Ordering Information &
Updating you Catalog

Ambulance Parts

Lights

Bulbs

Electrical Components

Door Hardware

Exterior Parts

Interior Parts

Equipment

Consumables



December 2013



Ordering Information

To place an order contact us at:

Phone: (905) 670-0601
1-877-ROWLAND (769-5263)

Fax: (905) 670-8540

Email: Orders@RowlandEmergency.com

Address: 1859 Gage Crt
Mississauga, Ontario, Canada
L5S 1S3

Updating Your Catalog

This catalog will be updated with new products as they come out. To keep you catalog updated sign up for email updates. We will notify you by email when catalog updates are released. To download updates for your catalog and sign up for email updates go to

www.RowlandEmergency.com/catalog/

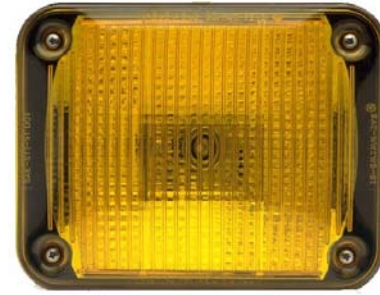
Whelen 7 x 9 LED Clear Lens



Part Number	Description
R-202000	LED Red/Clear (Clear Lens)
R-202018	LED Red (Clear Lens)

Whelen 7 X 9 Halogen Amber

R-204010



Part Number	Description
-------------	-------------

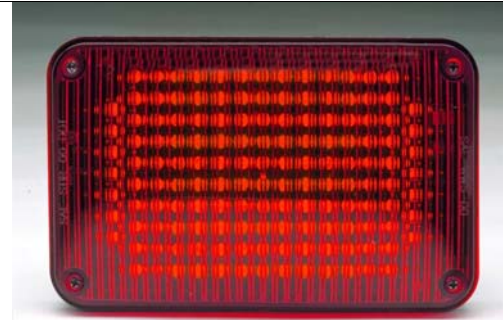
Whelen 7 X 9 Halogen Scene

R-204007



Part Number	Description
-------------	-------------

Whelen 4 X 6 5mm LED with Lens



Part Number	Description
R-202016	LED Red (Red Lens) 3rd Brake Light

Whelen 7 X 9 Halogen Spot

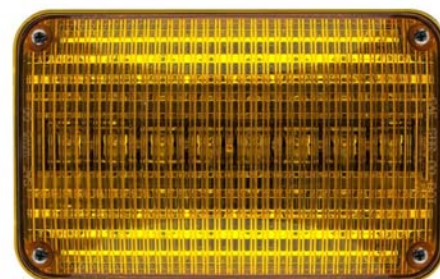
R-204008



Part Number	Description
-------------	-------------

Whelen 4 x 6 Amber Linear LED

R-202023



Part Number	Description
-------------	-------------

Whelen 3 X 4 LED without Lens



Part Number	Description
R-202001	Red
R-202002	White

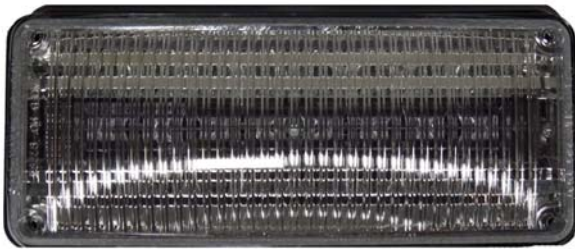
3 X 7 LED Scene Light with Optic Tilt

R-202043



Part Number	Description
-------------	-------------

Whelen 3 X 7 LED Clear Lens



Part Number	Description
R-202008	LED Red/Clear (No Flasher)
R-202011	LED Red/Clear (With Flasher)
R-202010	LED Clear
R-202041	LED Red with Clear Lens

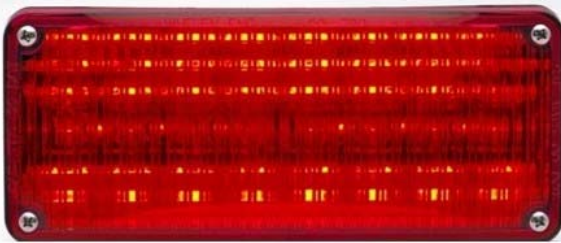
Whelen Halogen Scene Light 4500 Lightbar

R-204032



Part Number	Description
-------------	-------------

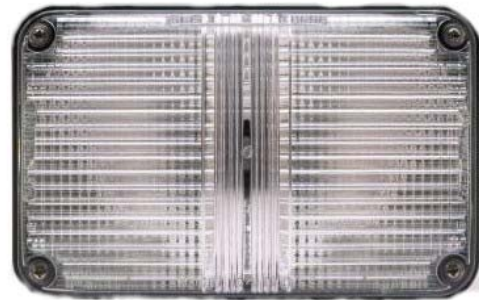
Whelen 3 X 7 LED Red Lens



Part Number	Description
R-202012	LED Red with Red Lens

4 x 6 Halogen Scene Light 13 Degree Tilt

R-204022



Part Number	Description
-------------	-------------

500 Series LED Light



Part Number	Description
R-202033	Red
R-202040	White
R-105002	Red with WP Kit 2 Pin
R-105003	White with WP Kit 2 Pin
R-105004	White with WP Kit 3 Pin

M4 Red Clear LED Light



Part Number	Description
R-202046	Light
R-206208	Bezel

M6 LED Lights



Part Number	Description
R-202056	Red / Clear
R-202058	Amber w/ Amber Lens
R-202059	Reverse Light
R-202061	Red Brake Tail Turn

M6 LED Amber Arrow

R-202060



Part Number	Description
-------------	-------------

M6 LED Scene Light

R-202077



Part Number	Description
-------------	-------------

M6 Bezel - Chrome 3 Light

R-206212



Part Number	Description
-------------	-------------

M6 Bezel - Chrome 15 degree Tilt

R-206214



Part Number	Description
-------------	-------------

M7 LED Lights



Part Number	Description
-------------	-------------

R-202084	Red / Clear
R-202085	Red

M Series Light Bezel - Chrome



Part Number	Description
-------------	-------------

R-206208	M4
R-206213	M6
R-206221	M9

LED Light



Part Number	Description
-------------	-------------

R-202049	Red No Flasher (2 Wires)
R-202050	White No Flasher (2 Wires)
R-202042	Red With Flasher (4 Wires)
R-202048	White With Flasher (4 Wires)
R-202051	Blue With Flasher (4 Wires)
11-764677-000	Black Bezel
38-0443063-00	Gasket for Bezel

LED Light



Part Number	Description
-------------	-------------

R-202047	Red No Flasher
11-764677-000	Black Bezel
38-0443063-00	Gasket for Bezel

Traffic Director LED Light

R-202044



Part Number	Description
-------------	-------------

Whelen 900 Series Lens



Part Number	Description
68-1183542-30A	Clear
68-1183542-10A	Amber

Whelen LED Amber Arrow



Part Number	Description
R-202031	4 X 6
R-202024	7 X 9
R-206624	Lens for 7 X 9

Whelen 900 Series Optic Clear Lens

68-1984100-300



Part Number	Description
	Fits the red clear LED lights.

Whelen Chrome Flange



Part Number	Description
R-206205	7 X 9
R-206203	3 X 7
R-206204	4 X 6

Whelen 900 Series Scene Light Lens

68-1983892-30A



Part Number	Description

Bezel 3 x 7 Chrome Tilt Forward Fender

R-206206



Part Number	Description

LED Light Inserts



Part Number	Description
R-202088	Red
R-202087	White
R-202089	Amber
R-206223	Bezel Black Surface Mount
R-206224	Bezel Chrome Surface Mount

LED Strip Light



Part Number	Description
R-202071	3" Red/White/Red (shown)
R-202074	5" Red/White/Red
R-202073	6" Red/White/Red
R-202081	12" Red/White/Red

Traffic Director

11.8335P.RWRWRWRWR



Part Number	Description
-------------	-------------

Tomar 7 X 9



Part Number	Description
R-203002	Strobe Red Clear
RECT-79SS-A	Strobe Amber
RECT-79H-R/C	Halogen Red Clear
R-202017	LED Red Clear With Leads
RECT-79HWB-R	Halogen Red
RECT-79H-A	Halogen Amber
R-204006	Halogen Clear (Transparent Lens)

Tomar Scene Light



Part Number	Description
R-204018	7 X 9
R-204000	3 X 7

Tomar 4 X 6



Part Number	Description
R-202028	LED Red With Leads
R-202034	LED Clear With leads
RECT-46HWR-R	Halogen Red
RECT-46HWB-C	Halogen Clear

Tomar 3 X 4



Part Number	Description
R-202003	LED Red
RECT-34HWB-R	Halogen Red
R-203004	Strobe Red

Tomar 3 X 7



Part Number	Description
R-203005	Single Strobe Red
RECT-37S-A	Single Strobe Amber
R-203007	Single Strobe Clear
RECT-37SS-R	Double Strobe Red
RECT-37SS-A	Double Strobe Amber
R-203000	Double Strobe Clear
RECT-37SS-RC	Double Strobe Red Clear
R-203001	Double Strobe Red Clear WP Connector
RECT-37CLW-R	LED Red With Leads
RECT-37LW-C	LED Clear With Leads
R-202009	LED Red Clear With Leads
R-202007	LED Red With Connector
R-202004	LED Clear With Connector
R-202005	LED Red Clear With Connector
R-202006	Demers LED Red Grille Light With Leads and Connector
R-204003	Halogen Red
R-204002	Halogen Amber
R-204001	Halogen Clear
R-204004	Halogen Red Clear (Spot)
RECT-37HWB-RC	Halogen Red Clear (Flood)

Tomar Lens 1/8 Clear 3/4 Red 1/8 Clear

R-206602



Part Number	Description
-------------	-------------

Tomar Lens 1/4 Clear 3/4 Red

R-206603



Part Number	Description
-------------	-------------

Tomar Lens Red

R-206604



Part Number	Description
-------------	-------------

Tomar Lightbar Endcap

R-200000



Part Number	Description
-------------	-------------

Tomar Lens Clear

R-200012



Part Number	Description
-------------	-------------

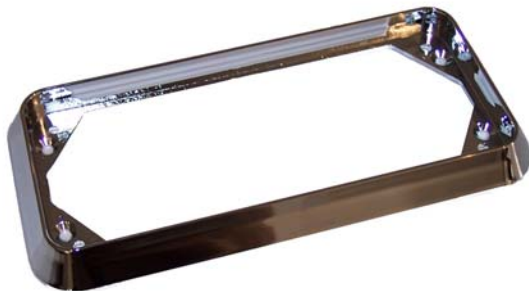
LED Lightbar



Part Number	Description
-------------	-------------

- R-202038 Red LED Light
- R-202037 White LED Light
- R-202039 Red Corner LED Light
- R-206620 Lens for Front or Rear
- R-200015 Lens Divider
- R-206621 End Cap with Gasket

Tomar Bezel



Part Number	Description
-------------	-------------

- R-206202 Surface Mount 3 X 7 Bezel
- R-206207 Surface Mount 7 X 9 Bezel

Code 3 4x6 LED



Part Number	Description
-------------	-------------

- R-202014 Amber
- R-202015 Red

Rotator



Part Number	Description
R-204019	Fast Rotator (Black Gear on Motor)
R-204021	Standard Rotator (White Gear on Motor)

Code 3 Lens Filter

E503031



Part Number	Description
-------------	-------------

Rotator



Part Number	Description
101494	Fast Rotator
S95880	Standard Rotator

Whelen Strobe Power Supply



Part Number	Description
CS240	2 Outlet (Shown)
CS450	4 Outlet
R-303710	2 Outlet WP Connectors
R-303711	4 Outlet WP Connectors

Code 3 Lens



Part Number	Description
R-206610	Clear Lens
E503078	Red Lens
E503047	Amber Lens

Tomar 2 Outlet Strobe Power Supply



Part Number	Description
400-1228	2 Outlet Neobe (Shown)
R-303706	2 Outlet Neobe Weather Pack

Tomar 4 Outlet Strobe Power Supply



Part Number	Description
780-1228	4 Outlet Neobe (Shown)
R-303705	4 Outlet Weather Pack
R-303704	4 Outlet
R-303706	2 Outlet Neobe Weather Pack

Tomar 6 Outlet Strobe Power Supply



Part Number	Description
786-1228	6 Outlet Neobe (Shown)
R-303707	6 Outlet Neobe Weather Pack

LED Marker Lights



Part Number	Description
R-202029	LED Amber Light
R-202030	LED Red Light

Marker Light Base and Connector

R-206201



Part Number	Description
-------------	-------------

LED Marker Lights 2008



Part Number	Description
560367	Grey Base
R-206200	Chrome Base
R-305088	Connector
R-200004	LED Amber Light
R-200005	LED Red Light

Amber Marker Light

R-200007



Part Number	Description
-------------	-------------

Connector for R-200007

R-305023



Part Number	Description

Amber LED Side Lamp

R-202027



Part Number	Description

Amber Side Lamp

501271



Part Number	Description

LED Red Tail Light

R-202013



Part Number	Description

Amber Side Lamp

501271A



Part Number	Description

LED Red Tail Light

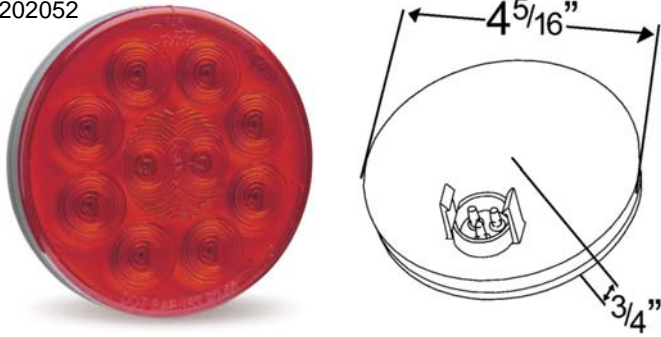
R-202022



Part Number	Description

LED Red Tail Light

R-202052



Part Number	Description

License Marker Light

R-200008



Part Number	Description

Incandescent Red Tail Light

52772



Part Number	Description

Reflectors



Part Number	Description
R-200013	Amber
R-200014	Red

Incandescent Reverse Light

R-204012



Part Number	Description

LED Cot Light

R-202036



Part Number	Description

LED Cot Light Dual Colour White and Red

R-202078



Part Number	Description
-------------	-------------

LED Light Action Wall

R-202080



Part Number	Description
-------------	-------------

Cot Light



Part Number	Description
-------------	-------------

H001297	Lens and Lamp
R-206611	Lens Only

Fluorescent Light



Part Number	Description
-------------	-------------

175610	Lamp with Bulbs
F15T8 CW	Bulb

Neon Light Large Oval



Part Number	Description
-------------	-------------

R-200006	Lamp with Bulb (No Lens)
R-205004	Bulb
R-206612	Lens
11-368-0027-00	Lens Spacers

Fluorescent Light Oval

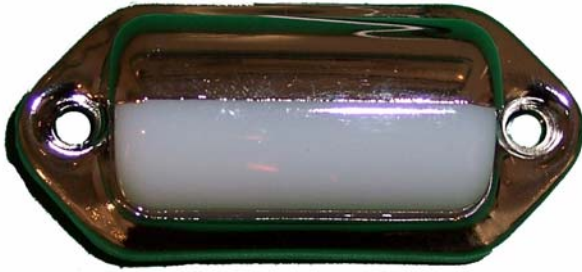


Part Number	Description
-------------	-------------

R-200003	Lamp with Bulbs
F15T8 CW	Bulb

Cabinet Light

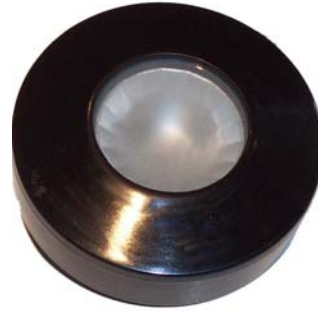
61501



Part Number Description

Reading Light

17800



Part Number Description

Cabinet Light

62271



Part Number Description

Goose Neck Reading Light

13.0530



Part Number Description

Red / White Reading Light

R-200018



Part Number Description

Set Parking Brake Light

R-204015



Part Number Description

Set Parking Brake Light LED

010-4400-7



Part Number	Description

LED Light White- Chrome Housing

R-200030



Part Number	Description

Door Ajar Lamp

R-204014



Part Number	Description

LED Light Red - Chrome Housing

R-200031



Part Number	Description

LED Light White - Black Housing

R-200032



Part Number	Description

LED Light Chrome Bezel

R-206222



Part Number	Description

Shore Power Indicator Light

R-206001



Part Number	Description

194



Part Number **Description**

R-205006



Part Number **Description**

R-205001

1A27W



Part Number **Description**

256



Part Number **Description**

Flashing Bulb

R-205013



Part Number **Description**

35H1



Part Number **Description**

37.5H1



Part Number

Description

Fits 07 and Earlier

7550 (Sho-Me Flashlight)



Part Number

Description

Fits 09.2770 Flashlight

R-205007



Part Number

Description

Fits 08 and Later

R-205000

795



Part Number

Description

R-205003

4701-WP



Part Number

Description

889



Part Number

Description

890



Part Number

Description

9006



Part Number

Description

9004



Part Number

Description

9007



Part Number

Description

9005



Part Number

Description

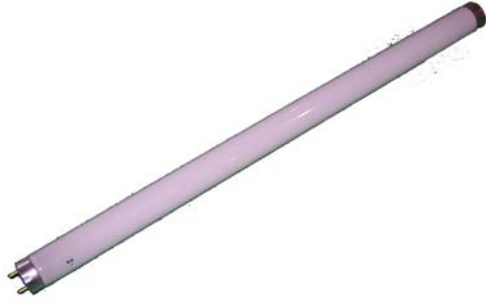
906



Part Number

Description

F15T8 CW



Part Number	Description
-------------	-------------

	Fits Light R-200003 and 175610
--	--------------------------------

H3



Part Number	Description
-------------	-------------

R-205004



Part Number	Description
-------------	-------------

H50TL12



Part Number	Description
-------------	-------------

H1



Part Number	Description
-------------	-------------

Whelen Bulbs



Part Number	Description
-------------	-------------

R-205008	20 Watt (H20SN12)
R-205009	27 Watt (H27SN12)
R-205010	35 Watt (H35SN12)
R-205011	50 Watt (H50SN12)
R-205012	60 Watt (H60SN12)

Rocker Switch



Part Number	Description
R-305044	Anti Theft
R-305162	Anti Theft Momentary
R-305118	Reading Light
R-305063	Backup Alarm Silence
R-305132	Door Lock
R-305164	Air Ride
R-305152	Exhaust Vent
PR-V8D2UHNB-AAC00-000	No Label (On) - Off - (On)
PR-V1D2-UHNB-AAC00-000	No Label On - Off

Rocker Switch - Espar Yellow

R-305193



Part Number	Description

Dimmer Switch

R-305091



Part Number	Description

Touchpad ERU

PR3700



Part Number	Description

This item must be ordered by phone.

Touchpad Ambulance Front

R-305059



Part Number	Description

This item must be ordered by phone.

Touchpad Ambulance Rear

R-305060



Part Number	Description
-------------	-------------

This item must be ordered by phone.

Touchpad Replacement Harness

R-305067



Part Number	Description
-------------	-------------

Multiplexed Switches (Rear)

R-305065



Part Number	Description
-------------	-------------

This item must be ordered by phone.

Multiplexed Switches (Front)



Part Number	Description
-------------	-------------

These items must be ordered by phone.

R-305055	Front Primary Switch on Left (shown)
R-305097	Front Primary Switch on Right

Controllers



Part Number	Description
-------------	-------------

PR-2306-00-S00	2306
PR-2305-02-500	2305

Multiplexed Controller



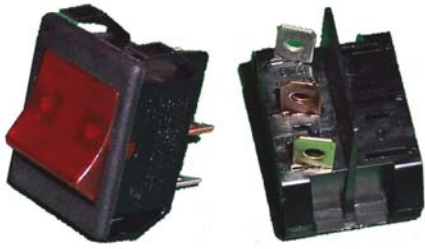
Part Number	Description
-------------	-------------

PR-3510	3510
PR3910	3910 (shown)

Switches and Dials

Red On Off Switch

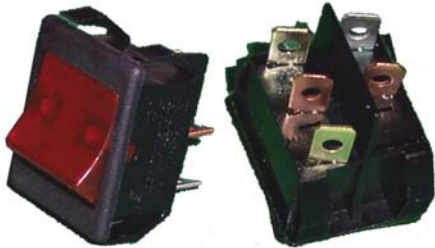
R-305050



Part Number	Description

Red On Off Primary Switch

R-305052



Part Number	Description

Red On Off On Switch

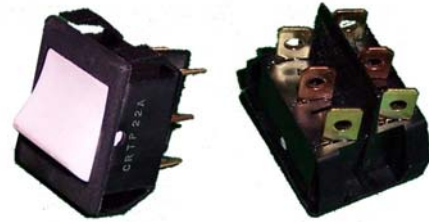
R-305051



Part Number	Description

White On On Switch for Voltmeter

R-305042



Part Number	Description

Power Door Lock Grill Switch



Part Number	Description
R-305047	Switch Only (Shown)
R-305049	Switch with Connector and Bracket for Ford
R-305048	Switch with Connector and Bracket for GM

Door Switch

R-305045



Part Number	Description

Door Switch



Part Number	Description
R-305046	Door Switch
R-305017	Connector

Oil Pressure Switch

R-101039



Part Number	Description
-------------	-------------

Volume Dial Mono

R-305024



Part Number	Description
-------------	-------------

Mercury Switch

05.0512



Part Number	Description
-------------	-------------

Volume Dial Stereo

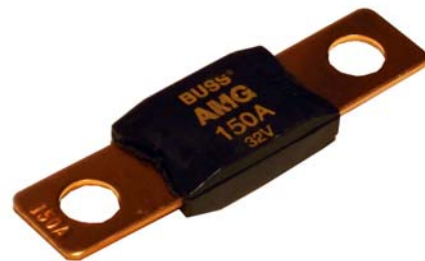
R-305025



Part Number	Description
-------------	-------------

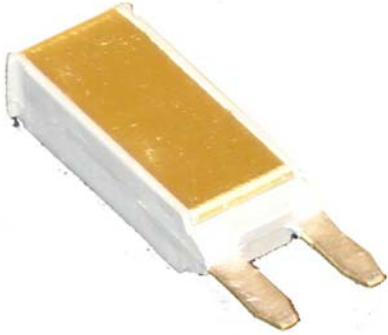
Components

High Amp Fuse



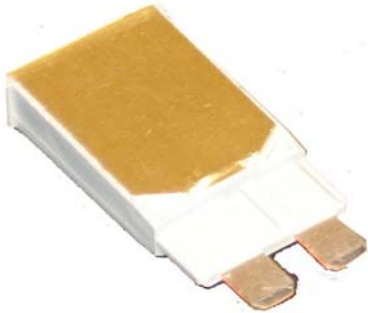
Part Number	Description
R-305098	125 Amp
R-305026	150 Amp
R-305122	200 Amp
R-305121	300 Amp
R-305120	Fuse Holder

Mini Circuit Breaker



Part Number	Description
R-305005	5Amp
R-305000	10Amp
R-305001	15Amp
R-305002	20Amp
R-305003	25Amp
R-305004	30Amp

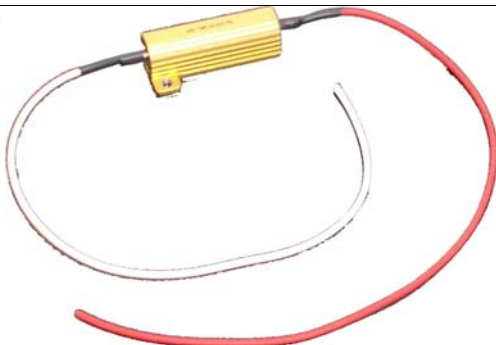
ATO Circuit Breaker



Part Number	Description
R-305158	10Amp
R-305157	15Amp
R-101032	20Amp
R-305087	30Amp

Resistor

R-305040



Part Number	Description
-------------	-------------

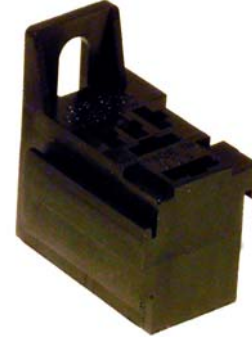
Rowland Micro Relay NC/NO 20A/35A

R-101019



Part Number	Description
-------------	-------------

Rowland Micro Relay Connector



Part Number	Description
R-101020	Connector
R-101021	Connector Socket (for 85, 86 and 87A)
R-101022	Connector Socket (for 87 and 30)

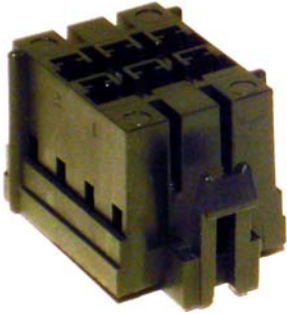
Demers Micro Relay

R-305036



Part Number	Description
-------------	-------------

Demers Micro Relay Connector



Part Number	Description
R-305020	Connector
R-305028	Connector Socket

Rowland Automotive Relay Socket



Part Number	Description
R-305062	Connector
R-101022	Connector Socket 14-16Ga Wire
R-305061	Connector Socket 12-10Ga Wire

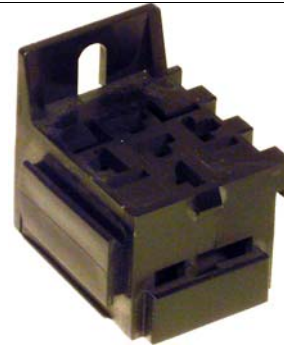
Relay NO / NC 20/30 Amp

R-305034



Part Number	Description

Demers Automotive Relay Socket



Part Number	Description
R-305021	Connector
R-305022	Connector Socket

Relay NO 30 Amp

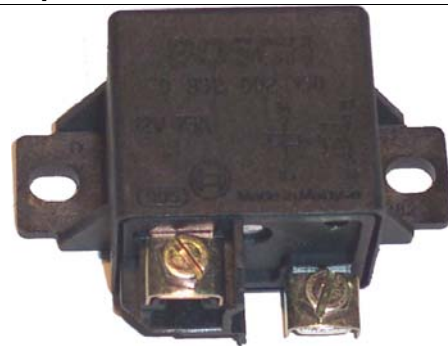
R-305035



Part Number	Description

Relay 75Amp

R-305033



Part Number	Description

25 Second Timer Relay

12DNOR25XC



Part Number	Description

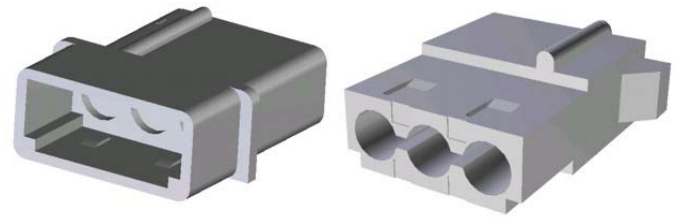
200 Amp Solenoid

R-305156



Part Number	Description

Connector - Rowland



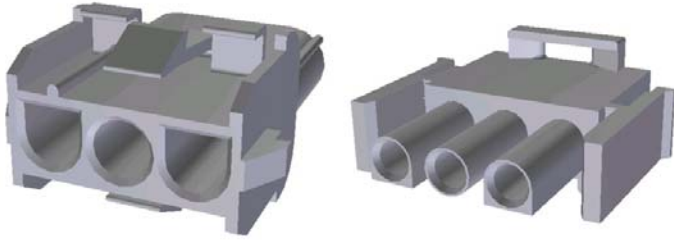
Part Number	Description
R-305138	Male 2 Pin
R-305139	Female 2 Pin
R-305128	Male 3 Pin (Left)
R-305129	Female 3 Pin (Right)
R-305141	Male 4 Pin
R-305140	Female 4 Pin
R-305126	Socket 20Ga (Fits Male)
R-305124	Pin 20Ga (Fits Female)
R-305127	Socket 18Ga (Fits Male)
R-305125	Pin 18Ga (Fits Female)

Connector - Demers



Part Number	Description
R-305014	Male 2 Pin
R-305011	Female 2 Pin
R-305015	Male 3 Pin (Right)
R-305012	Female 3 Pin (Left)
R-305019	Male 4 Pin
R-305018	Female 4 Pin
R-305013	Male 12 Pin
R-305010	Female 12 Pin
R-305016	Socket (Fits Male)
R-305009	Pin (Fits Female)

Connector - Crestline



Part Number	Description
	Housing includes wire seal and male housing includes interface seal.
	Male 2 Pin
	Female 2 Pin
	Male 3 Pin (Right)
	Female 3 Pin (Left)
R-305073	Male 15 Pin
R-305072	Female 15 Pin
	Socket (Fits Male)
	Pin (Fits Female)

Connector - WP



Part Number	Description
	Housing includes wire seal and male includes gasket.
	Male 3 Pin (Left)
	Female 3 Pin (Right)
	Socket (Fits Male)
	Pin (Fits Female)

Locator Cable



Part Number	Description
R-103329	16'
R-101011	24'

Incubator Plug

R-305029



Part Number	Description
-------------	-------------

Incubator Plug Tester

R-101018



Part Number	Description
-------------	-------------

Flashers and Modules

Vanner Alternating Flasher

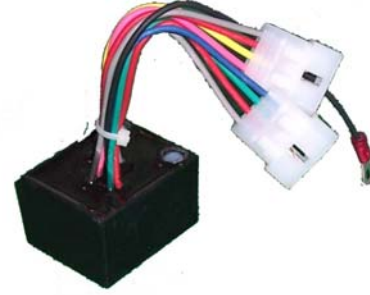
R-303700



Part Number Description

Steady Burn Module

R-103319



Part Number Description

G Module

R-103328



Part Number Description

4 Output LED Flasher

R-101033



Part Number Description

H Module

R-305137



Part Number Description

Flasher 930H-16

R-303702



Part Number Description

Flasher 930DM-LED-W

R-303701



Part Number Description

Remote Amp

R-303010



Part Number Description

Sirens and Alarms

Remote Head

R-303011



Part Number Description

SS700 Siren

SS700



Part Number Description

Remote Head

R-303012



Part Number Description

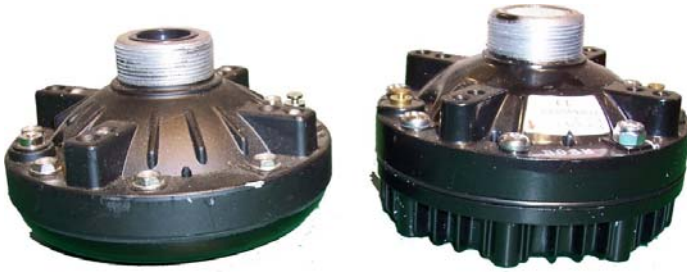
Whelen 295SL

R-303002



Part Number Description

Siren Driver



Part Number	Description
R-303003	Siren Driver 100 Watt Slim
30.0230	Siren Driver 100 Watt

Siren Bell

30.0212



Part Number	Description

Siren Driver

R-303007



Part Number	Description

Speaker Tip

30.0218



Part Number	Description

Dynamax Speaker



Part Number	Description
R-303006	Speaker
R-303004	Bracket

Backup Aids

Backup Alarm

R-303017



Part Number	Description

Backup Alarm

R-303000



Part Number	Description
-------------	-------------

Backup Distance Sensor



Part Number	Description
-------------	-------------

R-302000	2 Sensor Kit
R-302001	4 Sensor Kit
21-7101	Speaker
21-9980	Sensor

Backup Camera Kit



Part Number	Description
-------------	-------------

R-302003	Kit (Shown)
313C	Camera Only
CBL-358A	15M Camera Cable
CBL-358	20M Camera Cable

Mirror Control



Part Number	Description
-------------	-------------

747524	Ford (Shown)
R-103323	GM

Inside Camera

R-302006



Part Number	Description
-------------	-------------

	Works with kit R-302003
--	-------------------------

Meters

Amp Meter



Part Number	Description
-------------	-------------

180-0347	-200 to 200 Amps
R-303501	-300 to 300 Amps

Volt Meter

R-103326



Part Number	Description
-------------	-------------

Climate Control

Exhaust Fan 2008

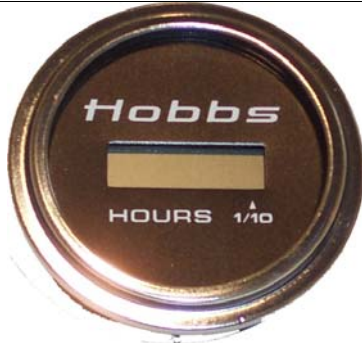
R-304012



Part Number	Description
-------------	-------------

Hour Meter

98314-03



Part Number	Description
-------------	-------------

Exhaust Fan

175605



Part Number	Description
-------------	-------------

Shunt



Part Number	Description
R-305041	Shunt 300A
101567	Shunt and Box

Heater



Part Number	Description
R-304007	Complete Unit
250053	Blower Motor
15-1513	Blower Housing

ESPAR Heater



Part Number	Description
R-304006	D4 Diesel
R-304015	B4 Gas

Air Conditioner 2013+



Part Number	Description
R-304024	Complete Unit

Heater 2008

R-304005



Part Number	Description
-------------	-------------

Air Conditioner 2008 - 2012

R-304001



Part Number	Description
-------------	-------------

ERU Heater

R-304014



Part Number	Description
-------------	-------------

Air Conditioner



Part Number	Description
13-1153	Complete Unit
250070	Blower Motor

Thermostat

R-304009



Part Number

Description

160 Amp Battery Isolator

22-27



Part Number

Description

Temperature Sensor

R-304008

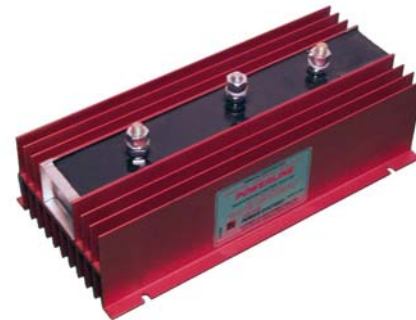


Part Number

Description

190 Amp Battery Isolator

22-31



Part Number

Description

Charging and Inverting Systems

140 Amp Battery Isolator

R-303508



Part Number

Description

240 Amp Battery Isolator 2 Battery

R-303507



Part Number

Description

240 Amp Battery Isolator 3 Battery

R-303509



Part Number	Description
-------------	-------------

2000 Watt ProSine 2.0

R-303514



Part Number	Description
-------------	-------------

1000 Watt Sine Wave Inverter

R-305089



Part Number	Description
-------------	-------------

20Amp Battery Charger

R-303513



Part Number	Description
-------------	-------------

1000 Watt Inverter/Charger HF



Part Number	Description
R-303518	1000Watt Inverter/Charger HF
R-105006	Upgrade Kit from Fleet Power to R-303518

12Amp Battery Charger

091-165-12



Part Number	Description
-------------	-------------

Auto Eject Plug



Part Number	Description
R-103324	Complete Kit (Shown)
R-103325	Outside Cover

Echo Charger

R-303503



Part Number	Description
	Allows you to charge more than one bank of batteries with a single charger.

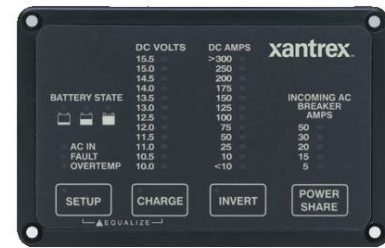
Super Auto Eject Plug



Part Number	Description
R-305095	Complete Kit - 20Amp (Shown)
R-305154	Complete Kit - 15Amp
R-305096	Outside Cover

Xantrex Control Panel

R-303512



Part Number	Description

Auto Eject Outlet 110V

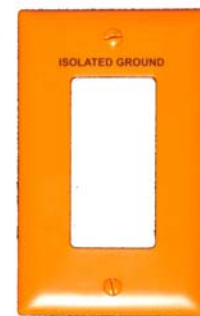
R-101015



Part Number	Description

Orange 120Volt Plug Cover

R-305031



Part Number	Description

Hospital Grade Plug



Part Number	Description
R-305032	White GFI Hospital Grade (Shown)
R-305030	Orange 120Volt Plug Hospital Grade

Orange GFI Hospital Grade with Buzzer

R-305071



Part Number	Description

Upper Ford Alternator 7.3L

5095



Part Number	Description

Lower Ford Alternator 7.3L

5094



Part Number	Description

Upper Ford Alternator 6.0L

5139



Part Number	Description

Lower Ford Alternator 6.0L

5077



Part Number	Description

GM Gas Alternator

R-303500



Part Number

Description

Outside Door Handle



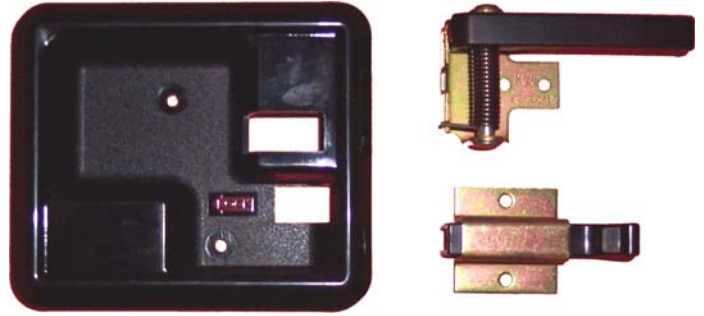
Part Number	Description
R-404039	Handle with Lock Right (Shown) Fits Demers vehicles built 2008 and up.
R-404033	Handle with Lock Left
R-404032	Handle without Lock Left
R-404046	Key

Door Lock Cylinder and Keys 2008



Part Number	Description
R-404065	Lock Cylinder Fits R-404043 and R-404034
R-404046	Key
R-404066	Cylinder Removal Tool

Inside Locking Handle



Part Number	Description
R-404028	Complete Kit Fits Demers right rear and side doors up to 2007.
R-404001	Bezel

Inside Non-Locking Handle



Part Number	Description
R-404030	Complete Kit Fits Demers left rear door up to 2007.
R-404002	Bezel

Outside Door Handle

R-404043



Part Number	Description
R-404043	Complete Kit Fits Demers rear and side doors up to 2007.

Outside Door Handle

R-404034



Part Number

Description

Fits Demers electrical door up to 2007.

Inside Door Unlock Lever

R-103382



Part Number

Description

Inside Handle



Part Number

Description

Fits Demers vehicles built 2008 and up.

R-404029

Locking (Shown)

R-404031

Non-Locking

Door Release



Part Number

Description

R-103306

Door Release Ball

R-404058

Protector

Door Lock Cylinder and Keys



Part Number

Description

Fits R-404043 and R-404034

TM211

Keys Only

R-404005

Door Lock Cylinder and Keys

Door Latch

R-404047



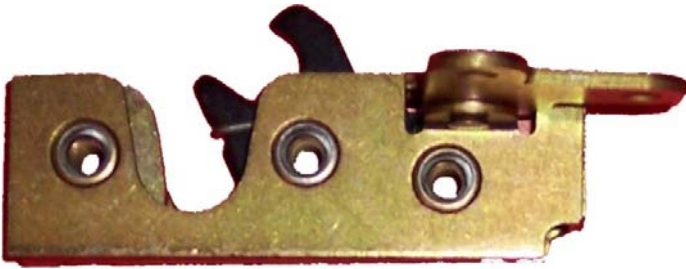
Part Number

Description

Top latch on Demers oxygen, left rear and side doors. Bottom latch on Demers right rear and electrical doors.

Door Latch

R-404048



Part Number	Description
	Top latch on Demers right rear and electrical doors. Bottom latch on Demers oxygen, left rear and side doors.

Striker Bolt

R-404055



Part Number	Description

Clip for Door Lock Rods Right

R-404004



Part Number	Description

Power Door Lock Actuators

R-404000



Part Number	Description

Clip for Door Lock Rods Left

R-404003



Part Number	Description

Power Door Lock Grommet Long

R-404021



Part Number	Description

Door Grabber 3 1/2"

R-404008



Part Number	Description

Door Grabber 4 1/2"

R-404007



Part Number	Description

Door Grabber Rubber Insert

R-404019



Part Number	Description

Gas Shock Door Holder



Part Number	Description
R-404054	Gas Shock 12.5"
R-103375	Locking Pin

Door Bracket for Gas Shock

R-103124



Part Number	Description

Door Frame Bracket for Gas Shock

R-103119



Part Number	Description

Door Holder



Part Number	Description
105085	Complete Kit
R-404004	Clip for Arm

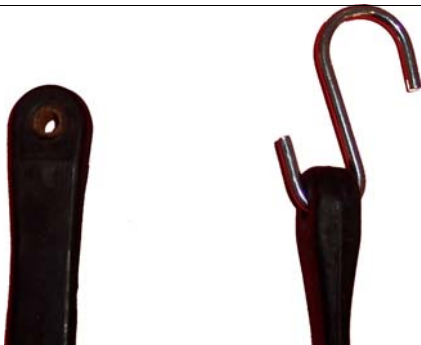
Door Strap



Part Number	Description
R-404011	8.25" Bolt Hole to Bolt Hole
R-404061	7" Bolt Hole to Bolt Hole

Door Strap

R-103312



Part Number	Description

Door Hinge



Part Number	Description
R-404070	37"
R-404044	67"
R-404045	68.5"
R-404085	80"

Window - 2013+



Part Number	Description
R-404083	Rear Doors (Shown)
R-404084	Side Entry Door

Window



Part Number	Description
R-404056	Rear Door (shown)
R-404057	Side Entry Door

Door Switch Access Cover

R-103305



Part Number	Description
-------------	-------------

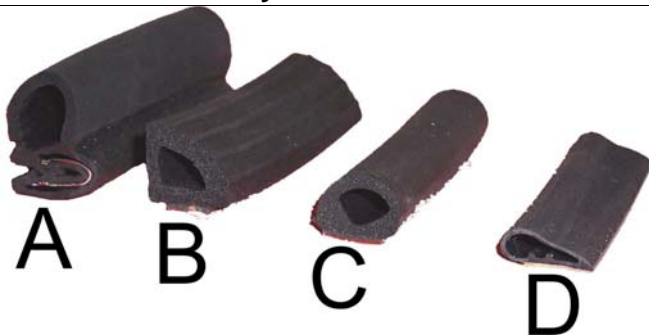
Door Handle Access Cover



Part Number	Description
-------------	-------------

R-103110	5" x 8"
R-103231	6" x 9" (shown)
R-404073	Actuator Cover 10" x 3 3/8"

Door Gasket - Sold by the Foot



Part Number	Description
-------------	-------------

R-404015	(A) 164' per Roll
R-404014	(B) 1000' per Roll
R-404013	(C) 1000' per Roll
R-404018	(D) 300' per Roll
	Sold by the Foot

Power Mirror



Part Number	Description
-------------	-------------

R-403005	GM Left 15.5" Arm
R-403006	GM Right 15.5" Arm
R-403007	GM Set 15.5" Arm
R-403008	GM Set 9.5" Arm
R-403001	Ford Left 15.5" Arm
R-403003	Ford Right 15.5" Arm
R-402036	Ford Set 15.5" Arm

Power Mirror Deluxe



Part Number	Description
-------------	-------------

R-403056	GM Left 15.5" Arm
R-403057	GM Right 15.5" Arm
R-403055	GM Set 15.5" Arm
R-403079	Ford Left 15.5" Arm
R-403078	Ford Right 15.5" Arm
R-403080	Ford Set 15.5" Arm
R-403077	GM/Ford Head Only - Left
R-403076	GM/Ford Head Only - Right

Chrome Exhaust Vent

R-103388



Part Number	Description
-------------	-------------

Vent Cover Screen

R-103387



Part Number	Description
-------------	-------------

Cab Riser Lens



Part Number	Description
R-206613	Left
R-206606	Center
R-206616	Right
R-103317	Lens Glue

Cab Riser Lens 2008



Part Number	Description
R-206614	Left
R-206608	Center
R-206615	Right
R-103317	Lens Glue

Fender GM 2008



Part Number	Description
R-402007	Fender
R-402042	Clip (uses 2)

Fender



Part Number	Description
R-402010	Fender
R-402043	Clip

Fender



Part Number	Description
R-402006	Fender Only
R-402009	Fender with 2 Way Mounting Tape

Fender Clip

R-402000



Part Number	Description
	For Fender R-402010

Fender E450 2008



Part Number	Description
R-402008	Fender
R-402043	Clip (uses 3)
500002	Clip (uses 2)

Fender Bracket

500002



Part Number	Description

Fender E350 2008



Part Number	Description
R-402041	Fender
R-402042	Clip (uses 2)

Grille Parts



Part Number	Description
R-402034	Top Chrome Piece
R-402032	Left Speaker Cover
R-402033	Right Speaker Cover

White Grille



Part Number	Description
175622	Grille Only
R-402011	Complete Grille with Speakers and Lights

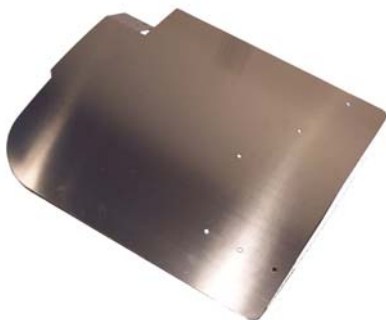
Rear Mud Flap

500052



Part Number	Description

Front Mud Flap



Part Number	Description
R-103202	Drivers Side Ford (Before 2010)
R-103203	Passenger Side Ford (Before 2010)
R-402046	Drivers Side Ford (2010 and Later)
R-402047	Passenger Side Ford (2010 and Later)
R-103227	Drivers Side GM
R-103226	Passenger Side GM

Corner Protector



Part Number	Description
	Includes only stainless steel corner piece, does not include reflectors.
R-402005	Long - 30" (Shown)
R-402066	26"
R-402004	Short - 10"
R-200013	Amber Reflector
R-200014	Red Reflector

Front Corner Protector



Part Number	Description
R-402002	Drivers Side (2008 and later)
R-402003	Passenger Side (2008 and later)
R-103200	Drivers Side (Before 2008)
R-103201	Passenger Side (Before 2008)

Cab Running Board



Part Number	Description
R-402028	Drivers Side Ford (2" Lip)
R-402029	Passenger Side Ford (2" Lip)
R-402027	Both Sides GM
R-402044	Drivers Side Ford (2.75" Lip) (2010 and Later)
R-402045	Passenger Side Ford (2.75" Lip) (2010 and Later)

Rear Flip Up Step



Part Number	Description
R-103102	60 1/2" Long
500087	54 1/2" Long

Rear Kick Plate

R-402020



Part Number	Description
-------------	-------------

Rear Bumper Step Cap



Part Number	Description
R-103207	Drivers Side
R-103208	Passenger Side

Rubber Bumper

R-103311



Part Number	Description
-------------	-------------

Rubber Bumper

R-103365



Part Number	Description
-------------	-------------

Rubber Bumper

260



Part Number	Description
-------------	-------------

Chrome Hub Cap Complete Set

R-402013



Part Number	Description
-------------	-------------

Fits Ford 2008 and later

Side Rub Rails



Part Number	Description
-------------	-------------

R-402025	Front
R-402026	Rear
R-402024	End Cap
R-402023	Center Spacer
R-102037	Bolt

Front Chrome Hub Cap

20-000001



Part Number	Description
-------------	-------------

Fits Ford 2008 and later

Bumper Speaker Mount

R-103230



Part Number	Description
-------------	-------------

Rear Chrome Hub Cap

20-000002



Part Number	Description
-------------	-------------

Fits Ford 2008 and later

Chrome Hub Cap Complete Set

R-402017



Part Number	Description
-------------	-------------

Fits GM 2008 and later

Rear Chrome Hub Cap

20-101752



Part Number	Description
-------------	-------------

Fits GM 2008 and later

Front Chrome Hub Cap

20-101750



Part Number	Description
-------------	-------------

Fits GM 2008 and later

Rear Chrome Hub Cap Center

20-101751



Part Number	Description
-------------	-------------

Fits GM 2008 and later

Front Chrome Hub Cap Center

20-101749



Part Number	Description
-------------	-------------

Fits GM 2008 and later

Chrome Hub Cap



Part Number	Description
-------------	-------------

R-402016	Front (Styleline)
R-402019	Rear (Styleline)
R-402012	Complete Set (Styleline)
	Fits Ford 2007 and before

Hub Cap Hardware



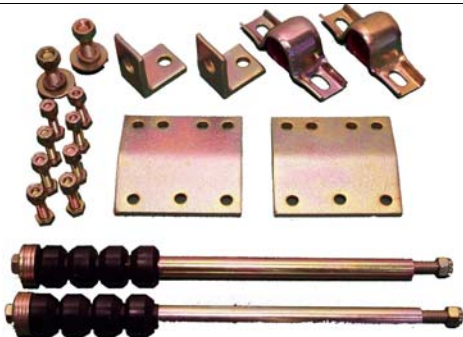
Part Number	Description
20-101758	Stud Extender
20-101753	Jam Nut & Chrome Cap Fits GM 2008 and later

Hub Cap Hardware



Part Number	Description
R-103381	Nut and Chrome Cap
R-402030	Bolt Extender Fits Ford Ambulances

Stabilizer Kit



Part Number	Description
R-103397	Stabilizer Kit
R-103390	Sway Bar with Above Kit

Stabilizer Bushings

R-103340



Part Number	Description

Stabilizer Link Kit

R-103392



Part Number	Description

Deer Warning Whistle

R-103391



Part Number	Description

Inverter Decal

R-405024



Part Number	Description

7" Ambulance Decal

R-405020

AMBULANCE

Part Number	Description

Batteries Decal

175627

This vehicle has 4 batteries
 2 Original Equipment
 1 Ambulance
 1 Radio
 Refer to manuals for locations
SERVICE ALL 4 REGULARLY

Part Number	Description

5" Ambulance Reversed Decal

R-405021

AMBULANCE

Part Number	Description

1.25" Diesel Decal

R-405022

DIESEL

Part Number	Description

3" Paramedic Decal

175626

PARAMEDIC

Part Number	Description

Decal Tape



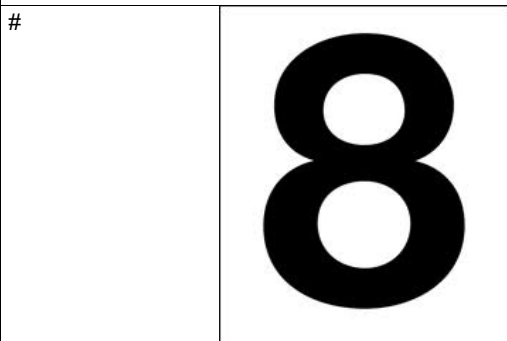
Part Number	Description
R-405026	8" Orange
R-405028	5" Orange
R-405029	9" White
R-405032	2" White
R-405033	1/2" Blue

Reflexite Decal Tape



Part Number	Description
R-405019	9" White
R-405018	8" Orange
R-405017	5" Orange
R-405031	2" White
R-405034	1" x 24" Blue Strip

Numbers - White



Part Number	Description

Air Ride

Granning Pressure Sensor

R-406000



Part Number	Description

Granning Height Control Valve

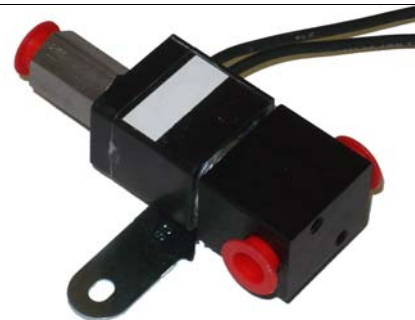
R-406001



Part Number	Description

Granning Kneeler Valve

R-406002



Part Number	Description

Granning Heater Auto Drain Valve

R-406003



Part Number	Description
-------------	-------------

Wear Pads - Chevrolet



Part Number	Description
-------------	-------------

R-406004	Left
R-406005	Right

Granning Rebound Strap (GM)

R-406006



Part Number	Description
-------------	-------------

Oxygen System

Oxygen Outlet with DISS Fitting

R-103349



Part Number	Description

Oxygen Outlet Complete

R-103351



Part Number	Description

Oxygen Line



Part Number	Description

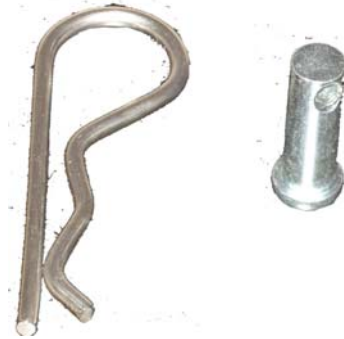
Oxygen lines are custom made to length.

Oxygen D Tank Holder



Part Number	Description
R-103134	D Tank Holder -Single Latch
R-403084	D Tank Holder -Double Latch 2013+
R-103363	Latch

M Tank Bracket Parts



Part Number	Description
R-604101	Hairpin
R-604102	Clevis Pin

Button Screw Caps



Part Number	Description
R-103109	Light Blue
R-403053	Dark Blue
R-403070	Grey
R-403052	Button Seat

Seats

Attendants Seat Recliner Handle

R-404038



Part Number	Description

Arm Rest



Part Number	Description
R-103341	Left
R-103342	Right

Attendants Seat Swivel



Part Number	Description
R-103361	Knob and Handle (shown)
R-404042	Handle

Attendants Seatbelt



Part Number	Description
R-103335	Complete (Shown)
R-400004	Receiver Only

Attendants Seat Forward / Back Bar

R-404024



Part Number	Description

Jump Seatbelt Receiver

R-403025



Part Number	Description

Jump Seatbelt Retractor

R-400005



Part Number	Description

Belt Cargo Secure w/ Ancra Quick Release

R-400051



Part Number	Description

Belt

R-103334



Part Number	Description

Anchor Plate

R-103373



Part Number	Description

E Track Belt with Clip



Part Number	Description
F-6018S	60" Lap Belt
R-400019	Belt Tracking Long (16" Female 36" Male)
R-400020	Belt Tracking Short (9" Female 36" Male)

Kit Shelf For 2008-2012



Part Number	Description
R-400006	Complete (Shown)
R-403036	Belt Only

Air Handling

Vent Modified

R-103212



Part Number Description

Vent Non Modified

R-103389



Part Number Description

Vent - A/C 2 Flaps

R-103399



Part Number Description

Expansion Valve

R-304004



Part Number Description

Expansion Valve

R-304010



Part Number Description

Air Regulating Valve Y-Pipe (Espar)

R-304023



Part Number Description

AC Hose and Fittings



Part Number **Description**

We stock all sizes of AC fittings and hoses. Call us for part numbers.

Suction Canister Bracket

R-103353



Part Number **Description**

Cab Parts

Coffee Cup Holder

R-403044



Part Number **Description**

Suction Canister Bracket

11-820-0042-00



Part Number **Description**

Fire Extinguisher Holder

R-103107



Part Number **Description**

Sharps Container and Bracket

R-103330



Part Number **Description**

Flare Case

R-403065



Part Number	Description

Clock

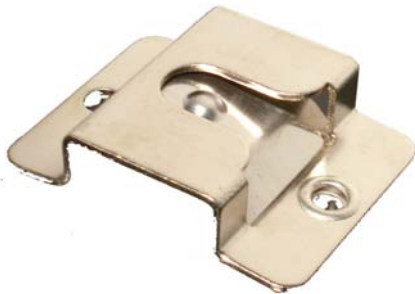
R-302005



Part Number	Description

Mic Clip

30069-38



Part Number	Description

Flashlight



Part Number	Description
09.2770	Halogen (Discontinued)
71-09.201LED	LED

Digital Clock

R-302004



Part Number	Description

Backboard Compartment Bracket

R-103229



Part Number	Description

Backboard Tunnel Strap

150396



Part Number	Description
-------------	-------------

Footman Loop



Part Number	Description
-------------	-------------

R-101108	Large 2"
R-103366	Small 1"

Backboard Door Clip Strap

R-103129



Part Number	Description
-------------	-------------

Grab Handle Black



Part Number	Description
-------------	-------------

N/S-002252	Handle
R-103216	Cab

Backboard Door Velcro



Part Number	Description
-------------	-------------

R-103126	Hook
R-103127	Loop

Grab Handle Black Retrofit Kit

N/S-002252K



Part Number	Description
-------------	-------------

Grab Handle Chrome 12"

R-404026



Part Number	Description
-------------	-------------

Crew Bench Waste Release Lever

R-403015



Part Number	Description
-------------	-------------

Grab Handle Yellow 12"

R-404027



Part Number	Description
-------------	-------------

Crew Bench Waste Spring

R-403016



Part Number	Description
-------------	-------------

Black Ball



Part Number	Description
R-103306	Black Ball
R-103300	Spacer
R-403072	Spring

Crew Bench Latch

R-404035



Part Number	Description
-------------	-------------

Drawer Latch



Part Number	Description
R-400047	Non-Locking (Small) - Demers
R-400048	Locking (Small) - Demers
R-400039	Locking (Large)
R-400040	Key for R-400039

Cabinet Lock

R-103116



Part Number	Description
-------------	-------------

Oxygen Door Lock



Part Number	Description
R-103369	Clip
R-103370	Pin
R-103371	Washer

Medical Cabinet Locking Latch

R-103362



Part Number	Description
-------------	-------------

Battery Drawer Latch

R-103364



Part Number	Description
-------------	-------------

Medical Cabinet Frame Latch

R-103368



Part Number	Description
-------------	-------------

Gas Shock



Part Number	Description
R-103367	12" 45lbs (Medical Cabinet)
R-103395	17" 20lbs (Top Medical Cabinets)
R-103303	12" 20lbs (Crew Bench Waste)
R-103376	12" 65lbs
R-404054	12.5" (Crew Bench)

Waste Bin Grey

R-403073



Part Number	Description
-------------	-------------

Grip Tape



Part Number	Description
	60' per roll
S422X60XBK	2"
S421X60XBK	1"

Decals

No Smoking Decal

R-405008



Part Number	Description
-------------	-------------

Seat Belt Decal

R-405013



Part Number	Description
-------------	-------------

Oxygen Decal

R-405010



Part Number	Description
-------------	-------------

Danger Biological Decal

R-405005



Part Number	Description

Waste Decal

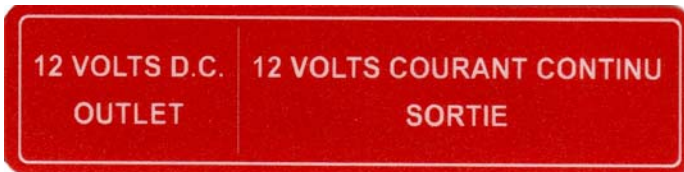
R-405015



Part Number	Description

12 Volt Outlet Decal

R-405003



Part Number	Description

Radio Head Installation Decal

R-405012



Part Number	Description

Open This Door First Decal

D150595



Part Number	Description

Maximum Load Decal

R-405007



Part Number	Description

Removable Back-Rest Decal

R-405027



Part Number	Description
-------------	-------------

Screws

Stainless Steel Sheet Metal Truss Head Screw



Part Number	Description
-------------	-------------

R-102029	#8 x 0.5
R-102030	#8 x 0.75
R-102031	#8 x 1
R-102032	#8 x 1.25
R-102033	#8 x 2
R-102009	#10 x 0.75
R-102010	#10 x 1
R-102011	#10 x 1.25
R-102012	#10 x 2
R-102017	#14 x 0.625
R-102018	#14 x 1

Stainless Steel Truss Head Machine Screw



Part Number	Description
-------------	-------------

R-102050	10-32 x 0.50
R-102003	10-32 x 0.75
R-102048	10-32 x 1
R-102049	10-32 x 1.5

Pan Head Screw



Part Number	Description
-------------	-------------

R-102020	#6 x 1.5 Stainless Steel
R-102002	#6 x 2 Stainless Steel
R-102026	#8 x 0.75 Black
R-102027	#8 x 1.5 Black
R-102028	#8 x 1.5 Stainless Steel
R-102007	#10 x 1 Black
R-102008	#10 x 1.5 Stainless Steel
R-102016	#14 x 1

Flat Head Screw



Part Number	Description
R-102019	#6 x 0.5 Stainless Steel
R-102022	#8 x 0.75 Stainless Steel
R-102023	#8 x 0.75 Black
R-102024	#8 x 1 Stainless Steel
R-102005	#10 x 0.75 Stainless Steel
R-102006	#10 x 2 Stainless Steel
R-102013	#12 x 1.25 Stainless Steel
R-102015	#14 x 1
R-102014	#14 x 1.25
R-202035	#14 x 1.25
R-102001	0.25 x 0.75 Stainless Steel

Stainless Steel Oval Head Sheet Metal Screw



Part Number	Description
R-102025	#8 x 0.5
R-102004	10-24 x 1

Finishing Washer Head Sheet Metal Screw



Part Number	Description
R-102034	#8 x 0.5
R-102036	#8 x 0.75

SMRT Complete Power Kit

41-6500038000



Part Number	Description
-------------	-------------

SMRT Power Supply

41-6500201148S



Part Number	Description
-------------	-------------

SMRT Battery Pack

41-6500101000



Part Number	Description
-------------	-------------

SMRT Power Cord

41-6500201149S



Part Number	Description
-------------	-------------

SMRT Charger Base

41-6500201000



Part Number	Description
-------------	-------------

Stryker

Stryker Cot Belts



Part Number	Description
41-6082260010	Restraint Package
41-6060160044	Stryker Lap Belt
41-6060260045	Stryker Shoulder Harness

Stryker Stair Chair Straps



Part Number	Description
41-6250001126	Black Chest
41-6250001125	Green Chest
41-6250001127	Black Ankle

Stryker Head Storage Tray



Part Number	Description
41-6500128000	Performance Pro and Power Pro
41-6082128000	MX-Pro

Stryker Mattress



Part Number	Description
41-6090041010	MX-Pro and Performance Pro Without Knee Gatch
41-6550001084	Performance Pro with Knee Gatch
41-6083001132	MX-Pro Bariatric

Stryker Backrest Storage Pouch

41-6500130000



Part Number	Description
41-6500130000	

Stryker IV Pole



Part Number	Description
41-6500216000	Patient Left For Performance Pro and Power Pro
41-6500215000	Patient Right For Performance Pro and Power Pro
41-6080216000	Patient Left For MX-Pro
41-6080215000	Patient Right For MX-Pro

Stryker Head End Storage Pouch



Part Number	Description
41-6082128010	Pocked for MX-Pro (Shown)
41-6082128012	Flat for MX-Pro
41-6085001154	Flat for Performance Pro

D Tank Bag

R-101004



Part Number	Description
-------------	-------------

This is required to be used with most cot mount oxygen holders.

Stryker MX-Pro Lower Storage Tray

41-6082150015



Part Number	Description
-------------	-------------

Defibrillator Pole Mounting Block



Part Number	Description
-------------	-------------

R-101002	Performance Pro and Power Pro (Shown)
R-101010	MX-Pro
R-101009	Replacement Pin

Stryker Head End D Tank Holder



Part Number	Description
-------------	-------------

41-6085700003	Performance Pro and Power Pro
41-6082140000	MX-Pro

Defibrillator Pole Mounting Block



Part Number	Description
-------------	-------------

R-600006	Power-Load Ready
----------	------------------

Stryker Split Post



Part Number	Description
-------------	-------------

41-6082200000	MX-Pro
41-6085033000	Performance Pro and Power Pro

Stryker Caster



Part Number	Description
41-6082200010	Caster With Brake
41-6082002012	Caster Without Brake
41-6060002010	Wheel

Stryker Side Bar

41-6360020010



Part Number	Description

Ferno

Ferno Restraint



Part Number	Description
031-3304C	7' 2 Piece Black (Shown)
031-3250C	7' 2 Piece Burgundy (Shown)
031-3892C	5' 2 Piece Black
031-2580C	5' 2 Piece Burgundy
031-2530C	7' 1 Piece Black
031-2600C	7' 1 Piece Burgundy

Ferno Shoulder Harness



Part Number	Description
031-3915C	Black (Shown)
031-3062C	Burgundy

Ferno Mattress



Part Number	Description
031-3063	35A Bolstered
031-3920	Proflex Bolstered
031-3692	35A Standard Belts not included

Ferno IV Pole



Part Number	Description
008-7172	For Proflex
008-7156	For 35A

Ferno IV Pole Catch

083-2001



Part Number	Description
-------------	-------------

Ferno Split Post



Part Number	Description
-------------	-------------

190-1240	Proflex
090-0277	35A

Ferno Storage Pouch

MANU0037C



Part Number	Description
-------------	-------------

Ferno Sidebar



Part Number	Description
-------------	-------------

Z090-5692	New - Stainless
-----------	-----------------

Computer

Computer Docking Station



Part Number	Description
-------------	-------------

R-603002	CF29
R-603001	CF19
R-603003	CF30
R-603004	Dell D620
R-603005	Dell E6400
R-603017	Dell E6400 XFR
R-101017	Replacement Key

Lever- CF18

DP18LHA



Part Number	Description
-------------	-------------

Computer Mount Arm

PBH



Part Number	Description
-------------	-------------

Toughbook Power Supply



Part Number	Description
-------------	-------------

R-603006	Power Supply with Cables CF 18,19,29,30
R-603036	Power Supply with Cables CF 31
R-603024	Yellow Tip Cable 3'
R-603035	Yellow Tip Cable 6'
R-603025	Black Tip Cable
R-603026	Input Cable

Computer Cables



Part Number	Description
-------------	-------------

R-603013	VGA 6' Male - Female
R-603010	VGA 25' Male - Female
R-603007	VGA 50' Male - Male
R-603012	Serial 6' Male - Female
R-603009	Serial 25' Male - Female
R-103329	Serial 16' Female - Female
R-101011	Serial 24' Female - Female
R-603014	Audio 6' Male - Female
R-603011	Audio 25' Male - Female

Oxygen System

D Regulator



Part Number	Description
-------------	-------------

R-604103	Regulator with DISS Fitting
R-604100	Add Genesis Quick Connect

M Regulator

320-2800-R-2



Part Number	Description
-------------	-------------

Flow Meter



Part Number	Description
-------------	-------------

R-103345	Flow Meter (Shown)
R-103346	Flow Meter with Genesis Quick Connect

Yoke Seal

17MP7529-CS



Part Number	Description
-------------	-------------

Barbed Nipple with Swivel for Flow Meter

R-101016



Part Number	Description
-------------	-------------

D Cylinder Wrench



Part Number	Description
-------------	-------------

02RT5400	D Cylinder Wrench (Shown)
01OR6704	D Cylinder Hand Wheel

Genesis Quick Connect Connectors



Part Number	Description
-------------	-------------

LL1-H11	Female (Left)
LL1-K11	Male (Right)

Impact Suction

Portable Aspirators

321



Part Number Description

320 Battery

11-703-0701-02



Part Number Description

Portable Aspirators

320



Part Number Description

321 Battery

11-703-0321-06



Part Number Description

On-board Aspirators

324



Part Number Description

120V AC Charger

11-810-0001-00



Part Number Description

12V DC Charger

11-708-0001-00



Part Number	Description

Not in Service Sign Pouch



Part Number	Description
R-101003	Pouch
NOT	Sign

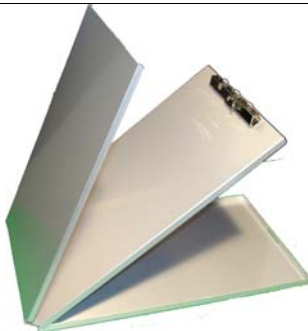
Suction Regulator



Part Number	Description
R-103354	Complete (Shown)
R-604000	Adjustment Knob
R-604003	Suction Gauge

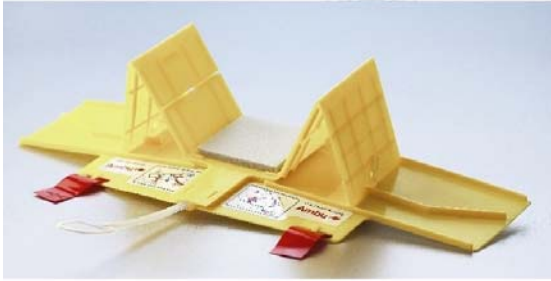
Zip Pack

10019



Part Number	Description

Head Wedge



Part Number	Description
13-000-264-034	1 Strap
13-000-264-036	2 Straps

Perfit Adjustable Collar



Part Number	Description
13-000-281-000	Adult
13-000-281-106	Child

BVM



Part Number	Description
13-520-211-000	Adult
13-530-214-000	Pediatric

Isoclear Face Mask



Part Number	Description
13-000-252-075	Medium Adult
13-000-252-074	Small Adult
13-000-252-073	Toddler
13-000-252-072	Infant

Suction Jars



Part Number	Description
11-410-0004-00	1200 cc (Shown)
11-410-0017-00	800 cc (Red Top)
11-410-0004-12	1200 cc Case of 12
11-410-0017-10	800 cc Case of 10

Suction Filter

11-465-0005-00



Part Number	Description

20 Min Flare with Spike

R-103344



Part Number	Description
-------------	-------------

Fire Extinguisher 5lbs

R-103357



Part Number	Description
-------------	-------------

Tachograph Charts

160-24



Part Number	Description
-------------	-------------