

2 0 0 0

Floor Plans

Specifications & Features



For value, versatility and all-out fun, there's nothing like the Prowler. For generations, Prowler has been America's number-one selling brand, hands down. One reason is our available floor plans. Inside this literature, you'll find over 50 configurations designed to fit every lifestyle. Be sure to check out Prowler's long list of standard features, all by respected name brands, all fully backed by Fleetwood's 2-year warranty. Every Prowler is assembled by hand by one of the oldest names in the RV business. We've been doing this right for 50 years, and we're excited that you're considering joining the Fleetwood family. We look forward to our next 50 years, filling the roads of America the Beautiful with explorers like you. We'll see you out there.



**America's Number-One
Selling Brand!**

Prowler Line-Up

Prowler Ultralite *Page 4*

The laminated, fiberglass and aluminum frame walls of the Prowler Ultralite create a trim, aerodynamic package that is a cinch to tow behind Sport Utility Vehicles, light trucks or minivans.

Prowler Lite *Page 6*

With features and space usually reserved for bigger trailers, the Prowler Lite remains compact, allowing you the freedom to negotiate almost any road.

Prowler *Page 8*

America’s number-one-selling brand, the affordable Prowler comes in 18 different floor plans. Chock-full of standard features and space, the Prowler has been Fleetwood’s value-leader for over 20 years running.

Fleetwood 2-Year Warranty & Service Program *Page 13*

Prowler LS *Page 14*

Beyond its sleek fiberglass exterior, the durable, well-appointed Prowler LS features a long list of standard features and new-for-2000 interior choices.

Universal Standard Features *Page 19*

Prowler LSI *Page 20*

The only thing not luxurious about the Prowler LSI is the price. Lightweight aluminum framing and classic decor on the inside provide you comfortable towability and sophisticated styling.

Prowler Sport Utility Trailer (SUT) *Page 22*

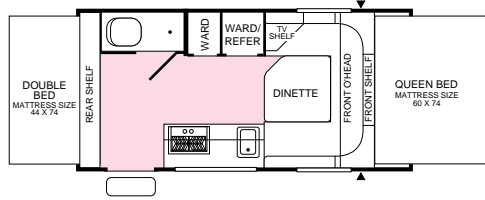
Carries you—and all your toys. Built tough, the Prowler Sport Utility Trailer affords you comfortable living, cargo room, and a large ramp door for loading.

Prowler Park *Page 23*

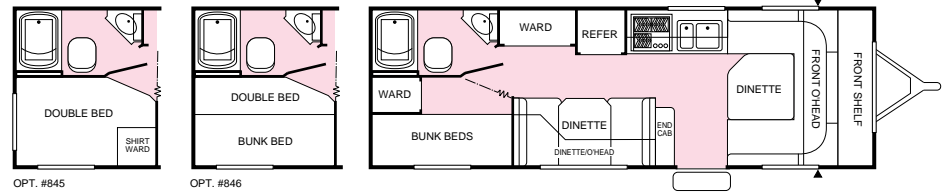
Location is everything. You can choose yours with the flexibility of this recreational park trailer—your home away from home.

Prowler Ultralite Floor Plans

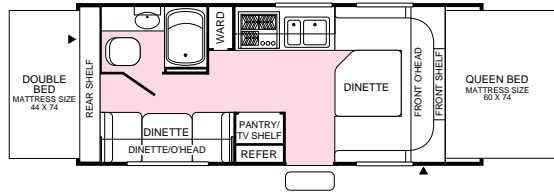
717 B
Tent Model



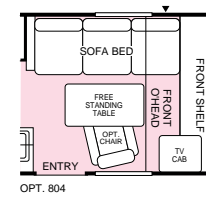
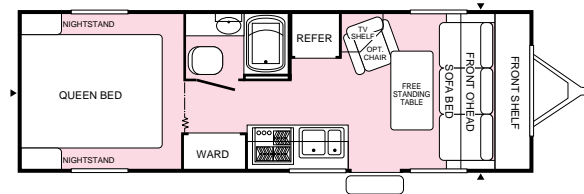
725 R



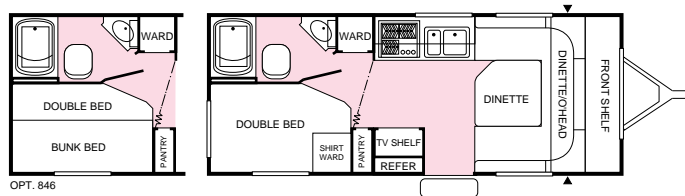
721 C
Tent Model



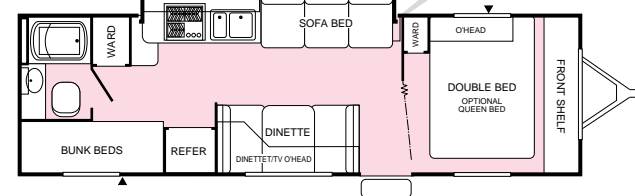
725 T



721 G



727 X



NEW!
Slide-Out Model

▲ = Exterior Storage

Prowler Ultralite Standard Features and Specifications

Exterior

- Aerodynamic Front Profile w/High-Impact ABS Cap*
- Independent Torsion Suspension System
- Laminated, Welded Aluminum Framed Walls, Floor and Ceiling
- Smooth Fiberglass Exterior
- Box Channel, Steel-Cambered Chassis
- 10" Electric Brakes
- Durable Molded Wheel Well Skirts*
- One-Piece Seamless Rubber Roof
- Beadboard Insulation
- 26" Wide Main Radius Entry Door w/Window & Screen
- Reinforced Screen Door w/Lock Shield & Kick Panel
- Flush Combo Entry Latch/Dead-Bolt Lock
- Enclosed LPG Tank Compartment*
- Large, Through-Storage Front Compartment*
- Skylight Roof Vents
- Wall-Switched Doorside Patio Light w/Amber Lens
- Battery Compartment
- Fully Enclosed Chassis*
- Enclosed Below-Floor Water & Waste Tanks w/Remote Valve*
- Lower Radius Skirting w/ABS Corner Caps*

Interior

- 3 Color-Coordinated Designer Interiors
- Oak Mortise and Tenon Cabinet Doors
- Full-length Vinyl Flooring Throughout
- Miniblinds Throughout (Except Bunks)
- Decor-Coordinated Bedspread (Double or Queen)
- Quality Furniture by Flexsteel®
- Wall-Switched 12V Lights
- Entry Door Header

Galley

- Double Bowl Sink*
- Galley Storage
- Pantry Cabinet (Most Models)
- 120V Appliance Receptacle at Countertop
- High-Pressure Laminated Countertop
- Decor Wall Border

Bath

- Oval Lavy Bowl
- Overhead Medicine Cabinet w/Mirror*
- Thetford® Toilet

- ABS Tub/Shower
- Wall-Switched Ceiling Light
- Skylight in Tub/Shower*

Appliances/Equipment

- Dometic® LP/Electric Refrigerator
- Atwood® 3-Burner Cook Top*
- Range Hood w/12V Light and Exhaust Fan
- Wall-Mounted Systems Monitor Panel*
- LP Fast-Recovery 6-Gallon Water Heater
- 30-Gallon Water and Waste Tanks*
- hydroflame® Furnace w/Thermostat
- Microwave w/Turntable*
- A&E® Patio Awning*
- Enclosed Dual 5-Gallon LPG Tanks w/Regulator & Auto-Changeover*
- Smoke Detector
- Fire Extinguisher
- Freeze-Resistant Water Lines
- LPG Leak Detector
- Water Heater Bypass

Electrical

- Electronic Converter w/Built-in Battery Charger
- 120V Central Electrical Panel
- 120V Ground Fault Circuit Protection
- Prewired for TV Antenna*
- Prewired for Air Conditioner
- Prewired for Stereo and Speaker*

Prowler Ultralite Popular Options

- Coleman® 13.5M BTU Roof Air Conditioner
- Front Combo Overhead Bunk (Most Models)
- Water Purifier
- AM/FM Cassette Stereo
- AM/FM CD Player
- Stabilizing Jacks/2 Pair
- Spare Tire
- Chair
- TV Antenna

*Not all models include all features. See your dealer for complete details. * Feature not available on all tent models.*

Prowler Ultralite Models	717 B	721 C	721 G	725 R	725 T	727 X
GVWR (<i>Gross Vehicle Weight Rating</i>)	3,500	4,400	4,400	4,900	4,900	6,000
Gross Dry Weight ¹	2,290	2,980	3,000	3,360	3,410	4,130
Carrying Capacity ²	1,210	1,420	1,400	1,540	1,490	1,870
Hitch Dry Weight ¹	220	360	350	350	390	420
Dry Axle Weight ¹	2,070	2,620	2,650	3,010	3,020	3,710
Length ³	17' 9"	21' 8"	21' 6"	25' 6"	25' 11"	27' 11"
Width ⁶	7' 2"	7' 2"	7' 2"	7' 2"	7' 2"	7' 2"
Height ⁴	8' 4"	8' 3"	8' 3"	8' 3"	8' 3"	8' 3"
Interior Height	76"	76"	76"	76"	76"	76"
Interior Width	84"	84"	84"	84"	84"	83"
Tires – Size (<i>Radials</i>)	ST205/ 75R 14(C)	ST175/ 80R 13(B)	ST175/ 80R 13(B)	ST175/ 80R 13(C)	ST175/ 80R 13(C)	ST175/ 80R 13(C)
Fresh Water Tank ⁵ – gal.	25	25	30	30	30	30
Gray Water Holding Tank ⁵ – gal.	30	30	30	30	30	30
Black Water Holding Tank ⁵ – gal.	7	30	30	30	30	30
Bed Size – Standard	60"x74" Front Queen 44"x74" Rear Double 58"x84" Dinette	60"x74" Front Queen 44"x74" Rear Double 58"x84" Dinette	48"x74" Double 58"x84" Dinette	27"x74" Bunk (2) 36"x74" Dinette 58"x84" Dinette	60"x75" Queen 36"x74" Dinette 58"x84" Dinette	53"x74" Double 27"x74" Bunk(2) 36"x74" Dinette
Maximum Sleeping Capacity	6	8	6	8	5	8

¹ All dry weights are based on standard model features and do not include optional features or equipment.

² Carrying capacity is determined by subtracting Gross Dry Weight from GVWR. Carrying capacity includes all fluids, optional equipment and personal cargo.

³ Includes 3'6" for hitch.

⁴ Add 12" if equipped with optional roof air conditioner.

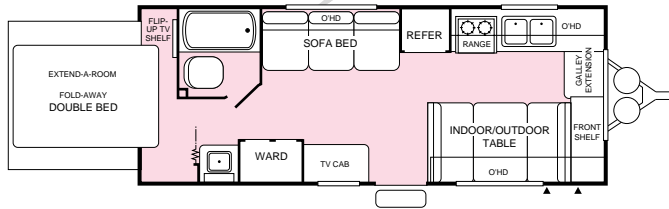
⁵ Approximate gallons.

⁶ Add 3" for awning.

Prowler Lite Floor Plans

824 E

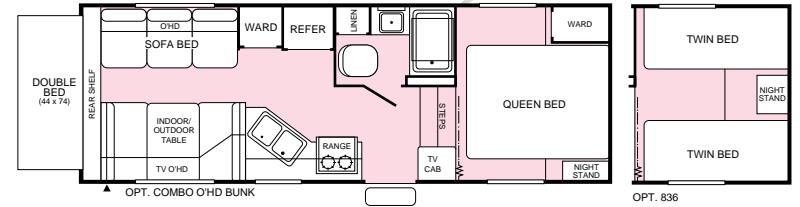
NEW!



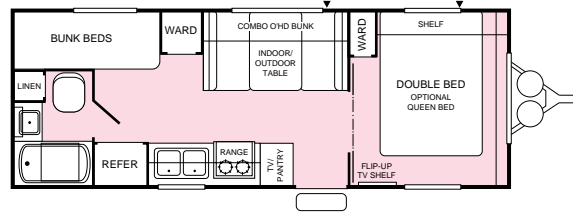
824 5B

Fifth Wheel Tent Model

NEW!

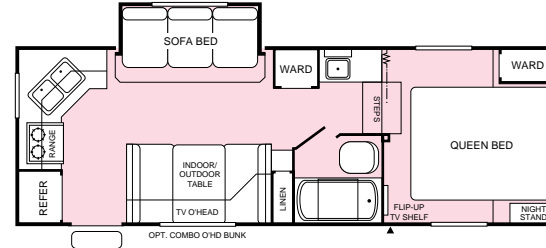


824 Z

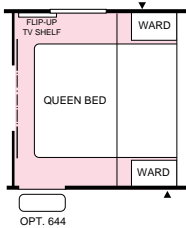
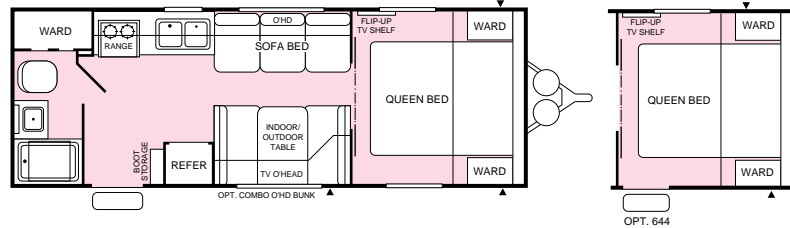


824 5C

Fifth Wheel

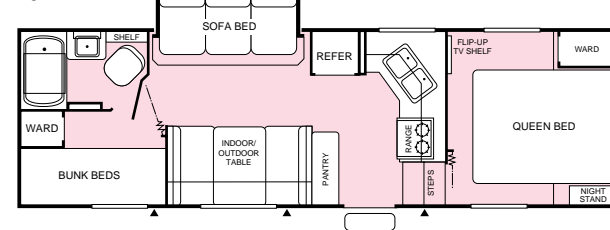


825 B

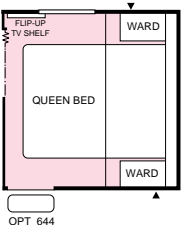
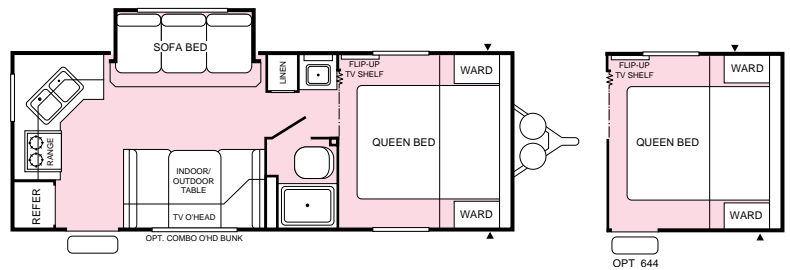


825 5X

Fifth Wheel



825 Y



▲ = Exterior Storage

Prowler Lite Standard Features and Specifications

Exterior

- One-Piece Seamless Rubber Roof
- High Gloss Arctic White Exterior Finish
- Entry Door w/Window & Screen Door
- One-Piece Flush Latch/Dead Bolt Lock
- Awning
- 14" Spoke Wheels
- 4-Wheel Electric Brakes
- Powder Coated Bumper – Sewer Hose Carrier
- Locking, Insulated Luggage Doors w/Finger Pulls
- Potable Water Fill
- Exterior Shower
- Dual Safety Chains (Travel Trailers)
- Dual Battery Rack
- Single Entry Step

Interior

- Overhead Bunk Cabinet (Select Models)
- Large Radiused Torque & Slider Windows
- Miniblinds Throughout (Except Bunk Areas)
- Designer Valances
- Raised Oak Panel Overhead Doors
- Bedspread
- Bed-Lift Struts
- Folding Room Divider (Most Models)
- Indoor/Outdoor Dinette Table
- Full-Length Vinyl Flooring
- Sink Lid

Bath

- ABS Tub/Shower Pan
- Bath Medicine Cabinet w/Mirrored Door
- Towel Bars
- Large Dome Skylight
- Power Roof Vent
- Thetford® Freshwater Toilet

Appliances/Equipment

- Dometic® Double Door LP/Electric Refrigerator
- Magic Chef® 3-Burner, High-Output Range w/Oven
- Electric Touch Microwave w/Turntable
- 6-Gallon LP Water Heater
- Water Heater Bypass
- Large Stainless Steel Sink
- Fire Extinguisher
- Smoke Detector
- LPG Leak Detector
- 7-Gallon Dual LP Bottles w/Regulator & Auto-Changeover

Electrical

- Electric Cable Hatch/Storage Compartment
- 120V G.F.I. Protected Circuits
- Prewired for Optional Air Conditioner
- Wall-Switched Patio Light
- Hitch Light
- AM/FM Cassette Stereo
- TV Antenna/Park Cable

Prowler Lite Popular Options

- Coleman® 13.5M BTU Air Conditioner
- Tinted Safety-Glass Windows
- Spare Radial Tire w/Carrier
- Carpeting in Living Area & Bedroom
- Decor Mirror Doors
- Water Purifier

Not all models include all features. See your dealer for complete details.

Prowler Lite Models	824 E	824 Z	825 B	825 Y	824 5B	824 5C	825 5X
GVWR (<i>Gross Vehicle Weight Rating</i>)	5,600	5,600	5,900	6,100	6,100	6,400	6,600
Gross Dry Weight ¹	3,810	3,810	4,040	4,330	4,460	4,680	4,870
Carrying Capacity ²	1,790	1,790	1,860	1,770	1,640	1,720	1,730
Hitch Dry Weight ¹	480	450	410	430	760	630	970
Dry Axle Weight ¹	3,330	3,360	3,630	3,900	3,700	4,050	3,900
Length ³	24' 2"	25' 9"	26' 6"	25' 11"	25' 1"	25' 4"	27' 11"
Width ⁶	8' 0"	8' 0"	8' 0"	8' 0"	8' 0"	8' 0"	8' 0"
Height ⁴	8' 11"	8' 11"	8' 11"	9' 3"	9' 6"	9' 10"	9' 10"
Tires – Size (<i>Radials</i>)	ST205/ 75R 14(B)	ST205/ 75R 14(B)	ST205/ 75R 14(B)	ST205/ 75R 14(B)	ST205/ 75R 14(B)	ST205/ 75R 14(B)	ST205/ 75R 14(B)
Fresh Water Tank ⁵ – gal.	40	40	40	40	40	40	40
Gray Water Tank ⁵ – gal.	40	40	40	30/30	40	30/30	30/30
Black Water Tank ⁵ – gal.	40	40	30	40	40	40	40
LPG Capacity – gal.	14	14	14	14	10	10	10
Bed Size – Standard	53"x75" Double	53"x75" Double 29"x76" Bunk (2)	60"x75" Queen	60"x75" Queen	60"x75" Queen 44"x74" Double	60"x75" Queen	60"x75" Queen 29"x76" Bunk (2)
Bed Size – Option		60"x75" Queen			32"x75" Twin (2)		
Maximum Sleeping Capacity	6	7	7	7	9	7	8

¹ All dry weights are based on standard model features and do not include optional features or equipment.

² Carrying capacity is determined by subtracting Gross Dry Weight from GVWR. Carrying capacity includes all fluids, optional equipment and personal cargo.

³ Trailer length includes 3'6" for hitch, fifth wheel includes pin box.

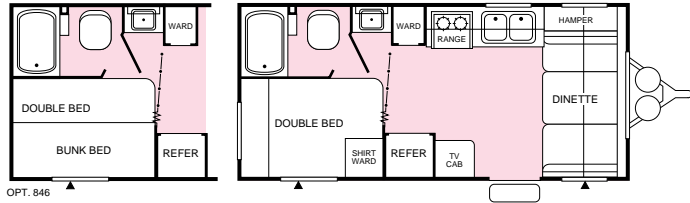
⁴ Add 12" if equipped with optional roof air conditioner.

⁵ Approximate gallons.

⁶ Add 3" for awning.

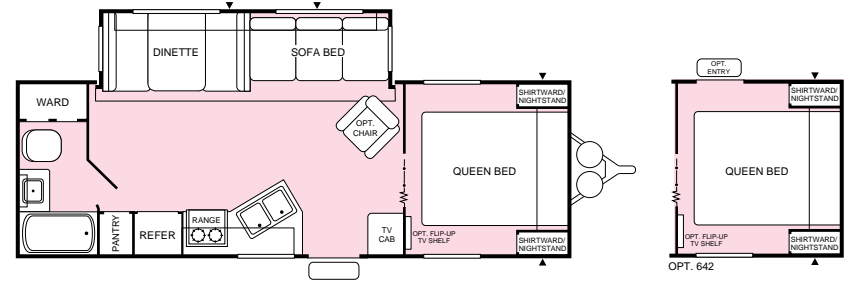
Prowler Floor Plans

19 N



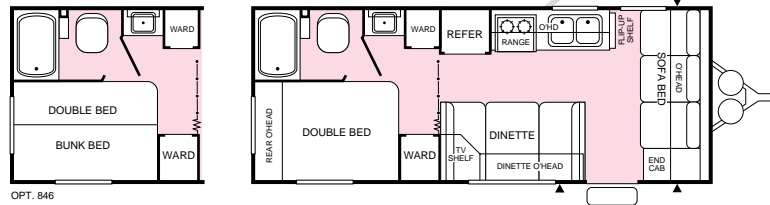
OPT. 846

26 H



OPT. 642

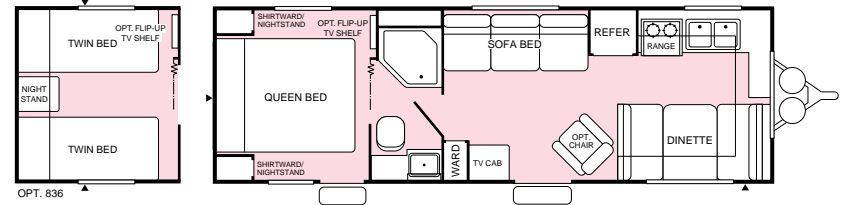
22 C



OPT. 846

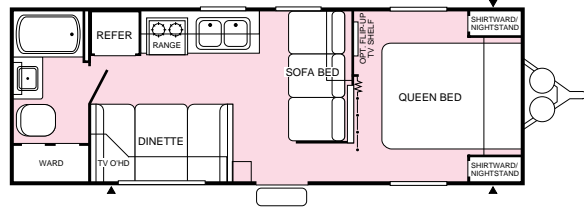
NEW!

26 T

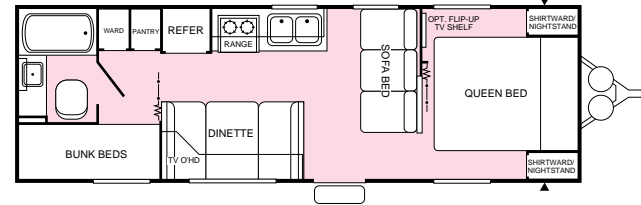


OPT. 836

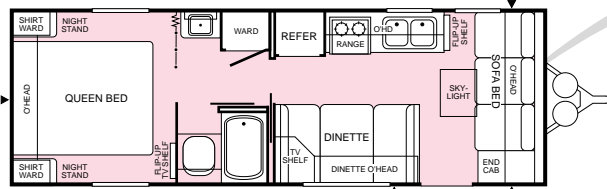
24 J



27 X



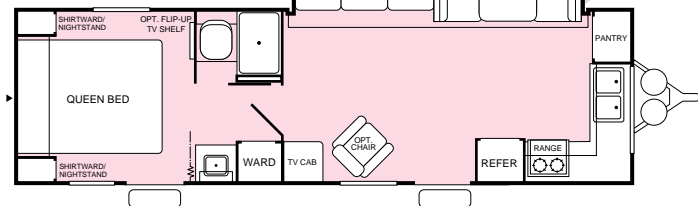
25 L



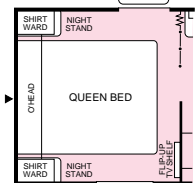
OPT.

NEW!

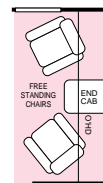
29 B



NEW!



OPT. 642

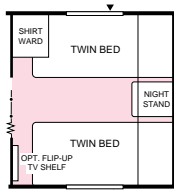
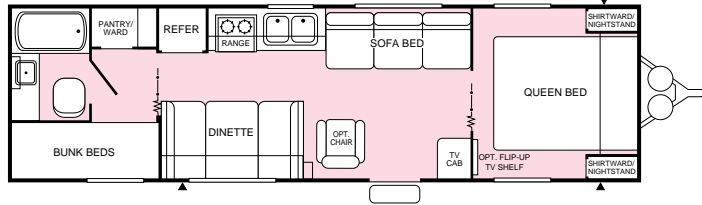


OPT. 388

▲ = Exterior Storage

Prowler Floor Plans

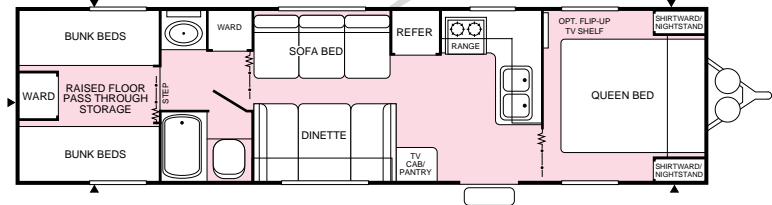
29 S



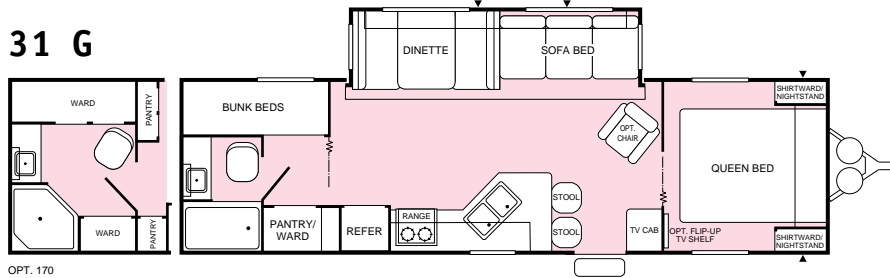
OPT. 836

33 V

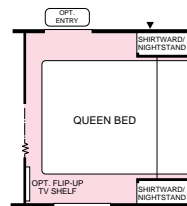
NEW!



31 G

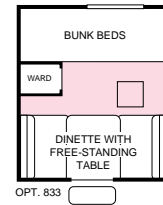


OPT. 170

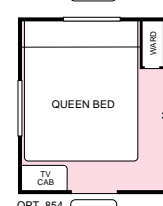
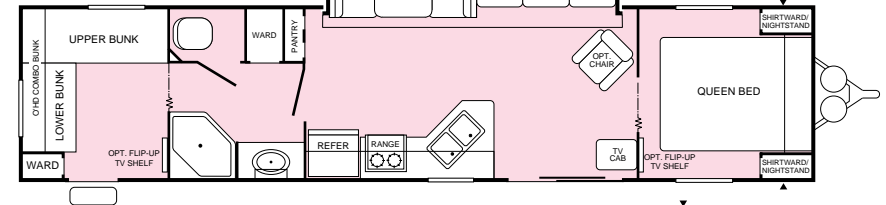


OPT. 642

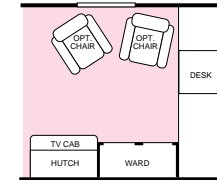
37 E with Park Model Features



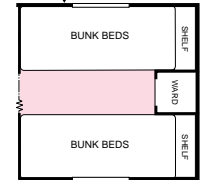
OPT. 833



OPT. 854



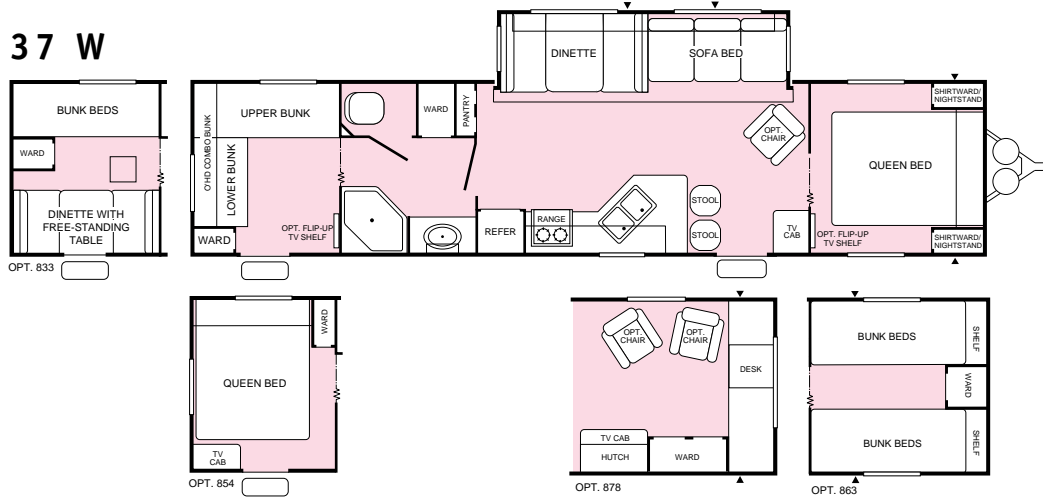
OPT. 878



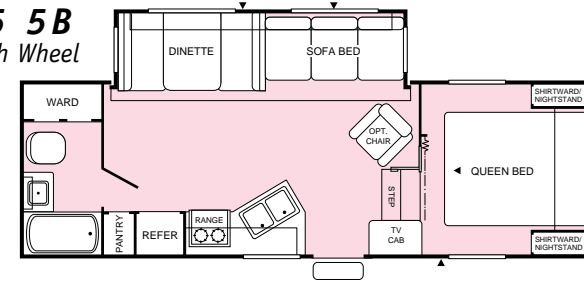
OPT. 863

Prowler Floor Plans

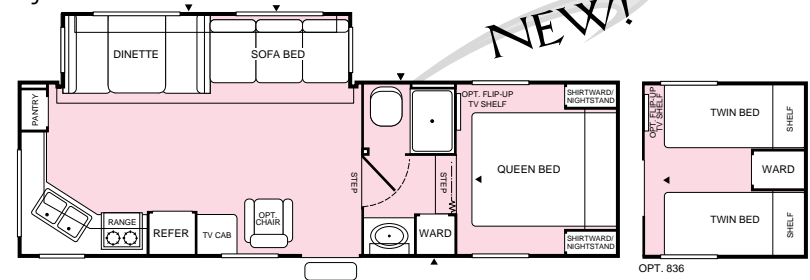
37 W



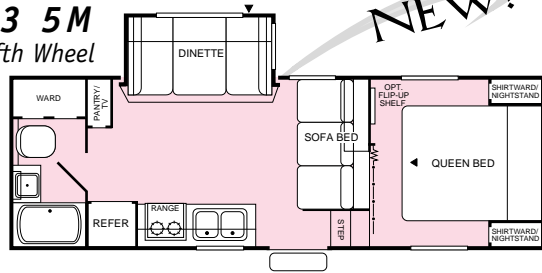
25 5B
Fifth Wheel



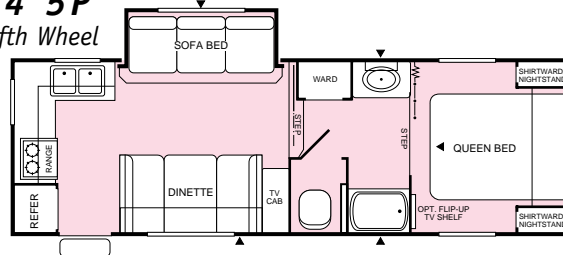
27 5J
Fifth Wheel



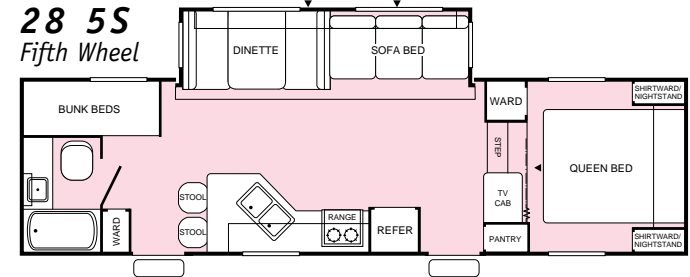
23 5M
Fifth Wheel



24 5P
Fifth Wheel



28 5S
Fifth Wheel



▲ = Exterior Storage

Prowler Standard Features

Exterior

- Gloss Exterior Metal Finish
- Construction Steel Channel or I-Beam, Cambered Chassis
- Tandem Axle w/4 Wheel Electric Brakes
- Radial Ply Tires w/White Spoke Wheels
- Rear Bumper w/Sewer Hose Carrier
- Retractable Non-Skid Entry Step
- Locking, Insulated Luggage Doors w/Finger Pulls
- Front Radiused Rockguard Awning (Select Models)
- One-Piece Seamless Roof
- Engineered Radius Roof Truss Rafters
- R-7 Fiberglass Insulation
- 30" Wide Main Entry Door w/Window (Most Models)
- Flush Combo Entry Latch/Dead Bolt Lock
- Reinforced Screen Door w/Lock Shield & Kick Panel
- Radiused Slider and Torque Windows
- LPG Tank Cover (Travel Trailers)
- Skylight Roof Vents
- Hitch Light
- Wall-Switched Doorside Patio Light
- Welded Dual Battery Rack (Travel Trailers)
- Waste Tank Single-Point Termination Valve
- Sonic-Welded, Automotive-Style Clearance Lights
- G.F.I. Protected 120V Duplex Receptacle
- A&E® Patio Awning

Interior

- Quality Furniture by Flexsteel®
- Color-Coordinated Designer Interiors
- Raised Oak Panel Cabinet Doors
- Face-Frame Cabinet Construction
- Overhead Dinette Storage Cabinet
- Box-Wrapped Valance Window Treatment
- Innerspring Mattresses
- Decor-Coordinated Bedspread w/Pillow Shams
- Wall Mounted 120V Decor Light
- Miniblinds Throughout (Except Bunks)
- Flush Floor Slide-Out (Select Models)

Galley

- Double Bowl Stainless Steel Sink
- High Pressure Laminate Countertop
- Overhead Storage Cabinet Above Sink
- Pantry Cabinet (Most Models)
- 120V Appliance Receptacle at Countertop

Bath

- Large Lavy Bowl
- Medicine Cabinet w/Mirrored Door
- Thetford® Fresh Water Flush Toilet
- 12V Power Roof Exhaust Vent
- Shower Curtain
- G.F.I. Protected 120V Duplex Receptacle
- Wall-Switched Ceiling Light

Appliances/Equipment

- Electronic Microwave Oven w/Turntable
- Dometic® Double Door LP/Electric Refrigerator
- Magic Chef® 3-Burner, High-Output Range w/Oven
- Range Hood w/12V Light and Exhaust Fan
- Wall-Mounted Systems Monitor Panel
- Water Heater Bypass
- hydroflame® Forced Air, D.S.I. Furnace w/Thermostat
- In-Floor Rigid Heat Ducting
- In-Ceiling Rigid Air Conditioning Ducting (Most Models)
- Dual 7-Gallon LPG Tanks w/Regulator & Auto-Changeover
- Smoke Detector
- Fire Extinguisher
- Freeze-Resistant Water Lines
- LPG Leak Detector

Electrical

- Electronic Converter w/Built-in Battery Charger
- 120V Central Electrical Panel
- 120V Duplex Receptacles Throughout
- 120V Ground Fault Circuit Protection
- 120V Patio Receptacle
- Wall-Switched Interior Lights
- TV Antenna
- Prewired for Roof Air Conditioner
- AM/FM Cassette Stereo
- Cable TV Hook-Up

Prowler Popular Options

- Living Room/Bedroom Carpet
- Coleman® Ducted Central Air Conditioning
- Exterior Shower
- Safety-Glass Windows
- Foot-Pedal Toilet
- Free-Standing Swivel Rocker
- 120V/LP Fast Recovery Water Heater
- Spare Tire
- Radius Luggage Doors
- Radius Entry Door
- Water Purifier
- One-Piece ABS Tub Walls

*Not all models include all features.
See your dealer for complete details.*

Prowler Specifications

Prowler Models	19 N	22 C	24 J	25 L	26 H	26 T	27 X	29 B	29 S	31 G
GVWR (<i>Gross Vehicle Weight Rating</i>)	5,400	5,700	6,200	6,400	7,700	6,800	7,000	8,300	7,400	8,600
Gross Dry Weight ¹	3,810	3,850	4,350	4,520	5,690	4,790	4,990	6,230	5,250	6,410
Carrying Capacity ²	1,590	1,850	1,850	1,880	2,010	2,010	2,010	2,070	2,150	2,190
Hitch Dry Weight ¹	420	480	570	540	610	610	580	900	590	830
Dry Axle Weight ¹	3,390	3,370	3,780	3,980	5,080	4,180	4,410	5,330	4,660	5,580
Length ³	20' 5"	23' 7"	25' 10"	26' 11"	27' 8"	28' 2"	28' 9"	30' 6"	31' 1"	31' 10"
Width ⁶	8' 0"	8' 0"	8' 0"	8' 0"	8' 0"	8' 0"	8' 0"	8' 0"	8' 0"	8' 0"
Height ⁴	8' 11"	8' 11"	8' 11"	9' 0"	9' 6"	9' 0"	9' 0"	9' 6"	9' 0"	9' 6"
Tires – Size (<i>Radials</i>)	ST205/ 75R 15(B)	ST205/ 75R 15(B)	ST205/ 75R 15(B)	ST205/ 75R 15(C)	ST205/ 75R 15(C)	ST205/ 75R 15(C)	ST205/ 75R 15(C)	ST225/ 75R 15(C)	ST205/ 75R 15(C)	ST225/ 75R 15(C)
Fresh Water Tank ⁵ – gal.	40	40	40	40	40	40	40	40	40	40
Gray Water Holding Tank ⁵ – gal.	40	40	40	40	40	40	40	40/21	40	40
Black Water Holding Tank ⁵ – gal.	40	40	40	40	40	40	40	40	40	40
LPG Capacity – gal.	14	14	14	14	14	14	14	14	14	14
Bed Size – Standard	53"x75" Double	53"x75" Double	60"x75" Queen	60"x75" Queen	60"x75" Queen	60"x75" Queen	60"x75" Queen 29"x74" Bunk (2)	60"x75" Queen 29"x74" Bunk (2)	60"x75" Queen 29"x74" Bunk (2)	60"x75" Queen 29"x75" Double
Bed Size – Option	29"x76" Bunk (2)	29"x76" Bunk (1)			32"x75" Twin (2)			32"x75" Twin (2)		
Maximum Sleeping Capacity	6	7	6	6	6	6	8	6	8	8

Prowler Models (Cont.)	33 V	37 E	37 W	23 5M	24 5P	25 5B	27 5J	28 5S
GVWR (<i>Gross Vehicle Weight Rating</i>)	7,700	9,700	10,000	7,500	7,900	8,000	8,800	9,300
Gross Dry Weight ¹	5,430	7,520	7,480	5,600	6,020	6,110	6,760	7,140
Carrying Capacity ²	2,270	2,180	2,520	1,900	1,880	1,890	2,040	2,160
Hitch Dry Weight ¹	650	1,050	1,050	930	980	1,140	1,110	1,300
Dry Axle Weight ¹	4,780	6,470	6,430	4,600	5,040	4,970	5,650	5,840
Length ³	33' 11"	38' 4"	38' 4"	25' 6"	25' 2"	26' 7"	27' 10"	29' 11"
Width ⁶	8' 0"	8' 0"	8' 0"	8' 0"	8' 0"	8' 0"	8' 0"	8' 0"
Height ⁴	9' 0"	9' 6"	9' 6"	11' 0"	11' 2"	11' 7"	11' 4"	11' 7"
Tires – Size (<i>Radials</i>)	ST205/ 75R 15(C)	ST225/ 75R 15(D)	ST225/ 75R 15(D)	ST205/ 75R 15(B)	ST205/ 75R 15(C)	ST205/ 75R 15(C)	ST225/ 75R 15(C)	ST225/ 75R 15(C)
Fresh Water Tank ⁵ – gal.	40	40	40	40	40	40	40	40
Gray Water Holding Tank ⁵ – gal.	40	40	40	40	40/21	40	40/21	40
Black Water Holding Tank ⁵ – gal.	40	40	40	40	40	40	40	40
LPG Capacity – gal.	14	14	14	14	14	14	14	14
Bed Size – Standard	60"x75" Queen 29"x74" Bunk (4)	60"x75" Queen 29"x76" Bunk (2)	60"x75" Queen 29"x76" Bunk (2)	60"x75" Queen	60"x75" Queen	60"x75" Queen	60"x75" Queen 29"x74" Bunk (2)	60"x75" Queen
Bed Size – Option		60"x75" Queen	60"x75" Queen			32"x75" Twin (2)		
Maximum Sleeping Capacity	10	11	11	6	6	6	6	8

¹ All dry weights are based on standard model features and do not include optional features or equipment.

² Carrying capacity is determined by subtracting Gross Dry Weight from GVWR. Carrying capacity includes all fluids, optional equipment and personal cargo.

³ Trailer length includes 3'6" for hitch, fifth wheel includes pin box.

⁴ Add 12" if equipped with optional roof air conditioner.

⁵ Approximate gallons.

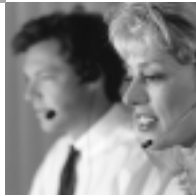
⁶ Add 3" for awning.

Fleetwood's Far Reaching Warranty & Service Program



Two Year Full Warranty

Leaving the Fleetwood dealership after you've purchased your RV doesn't mean leaving your dealer's commitment to your satisfaction behind. **Ownercare**, Fleetwood's extensive warranty and service program, provides two full years of total warranty coverage. **Ownercare** stands out as one of the RV industry's most comprehensive programs and includes systems, appliances, components and construction—with no service charges or costs to you.



Fully Transferable

At Fleetwood RV, we're confident in our products and don't hesitate to stand behind them. Your new Fleetwood not only comes with one of the industry's most comprehensive warranties, but that warranty is fully transferable during the full 24 months of warranty coverage (excludes Park Trailers).

National Coverage

Have a question about your new Fleetwood? We've got it covered—with one of the nation's largest trained dealer networks—ready to provide you with the services you need to make owning your RV enjoyable. Over 1,100 Fleetwood dealers throughout the U.S. and Canada are just a phone call away.



24-Hour Roadside Assistance Program

Complimentary, first-year roadside assistance coverage wherever you travel in the U.S. and Canada is available with every Fleetwood RV towable. Quality emergency road service from a nationwide network of service providers can help you with emergency towing, flat tire and lock-out assistance. Be sure to ask your dealer about this valuable program. All you need to do is sign up! After the first, free year, you can continue the service for many more years at a very reasonable cost.

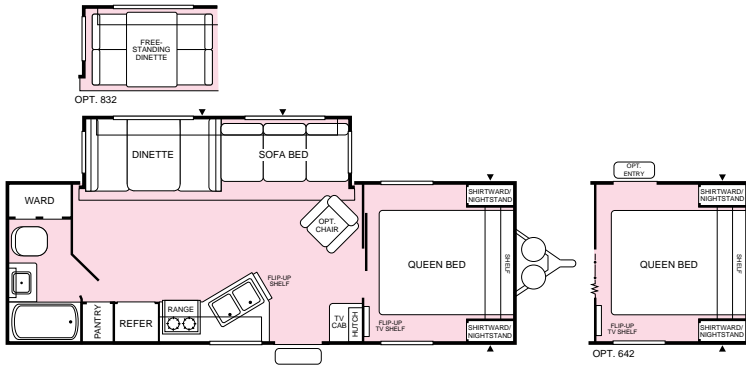
An Extra Thank You

Ask your dealer about your Thousand Trails complimentary 30-day membership certificate. It's your chance to get going in your new RV and enjoy some scenic camping, plus our way of thanking you again for your purchase of a Fleetwood RV. Happy (Thousand) Trails!

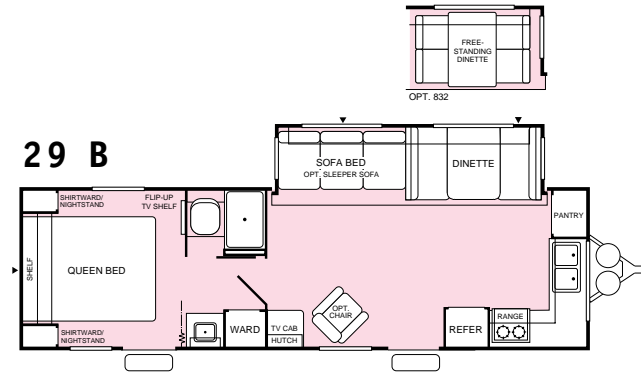


Prowler LS Floor Plans

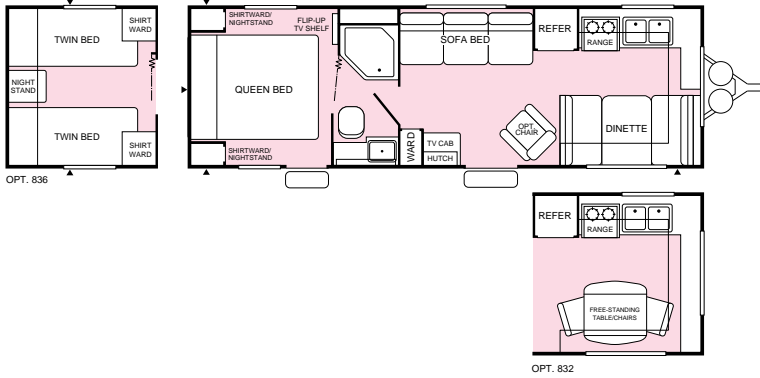
26 H



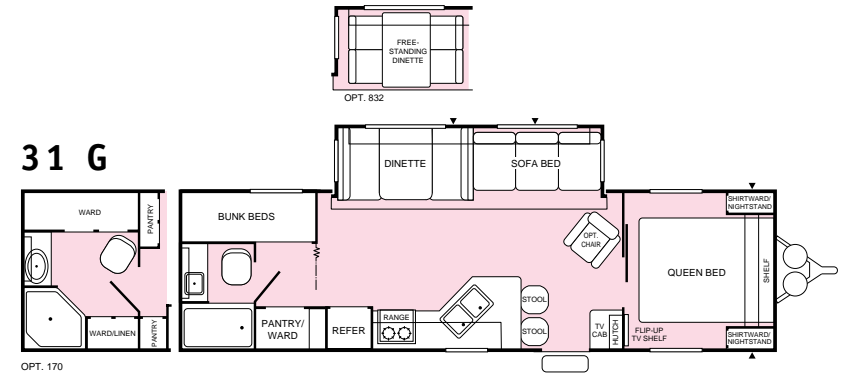
29 B



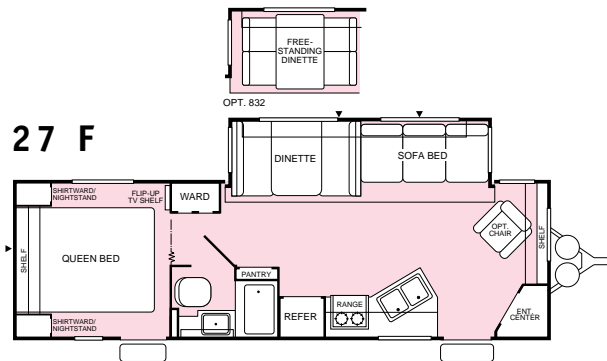
26 T



31 G



27 F



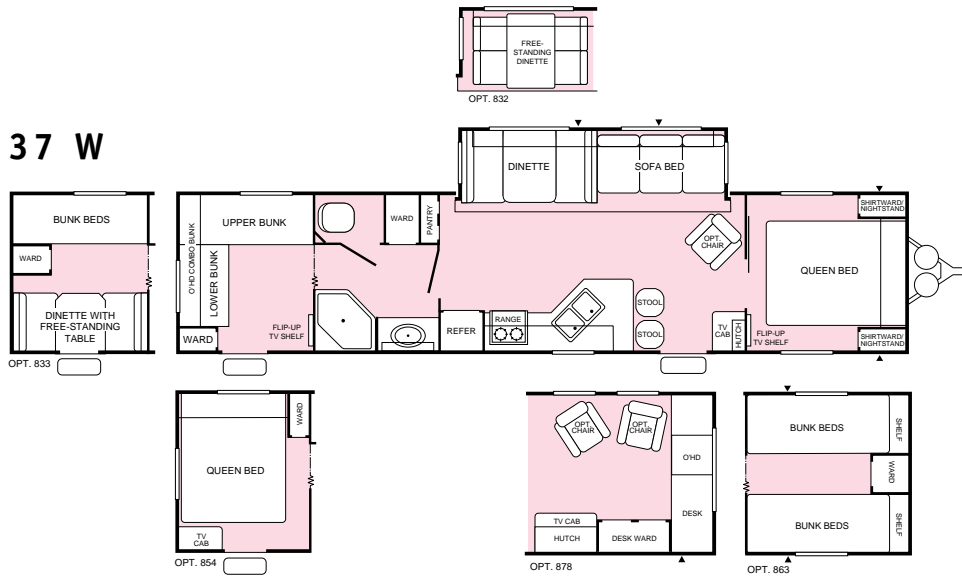
34 P



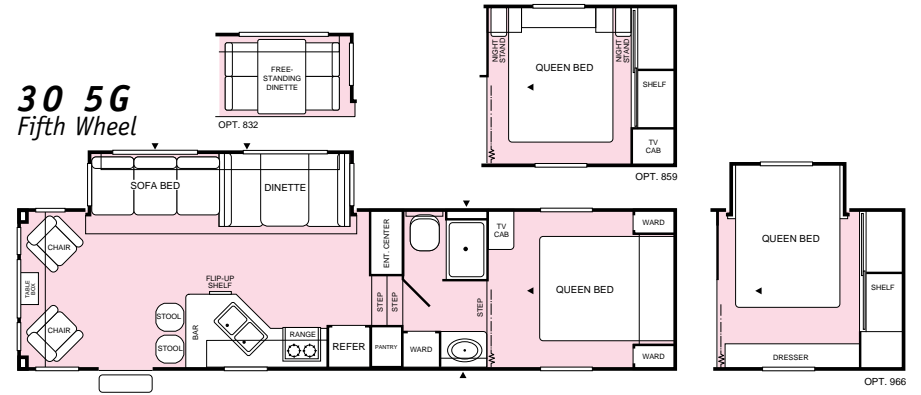
▲ = Exterior Storage

Prowler LS Floor Plans

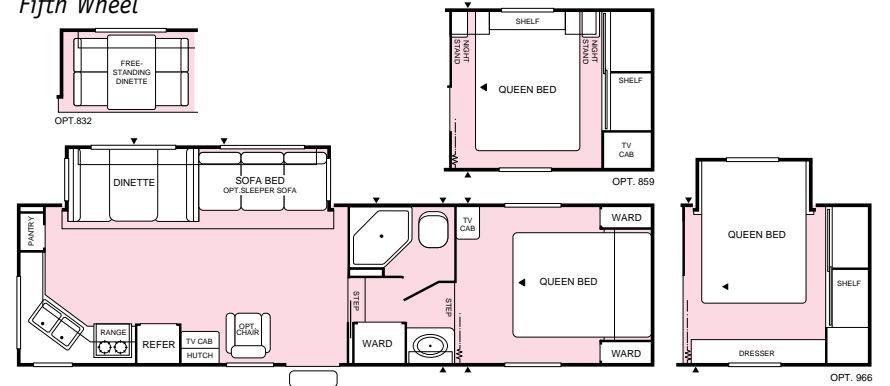
37 W



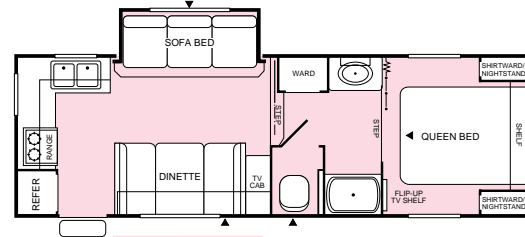
30 5G Fifth Wheel



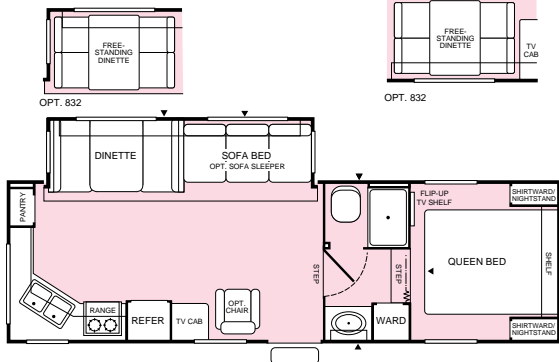
30 5X Fifth Wheel



24 5P Fifth Wheel



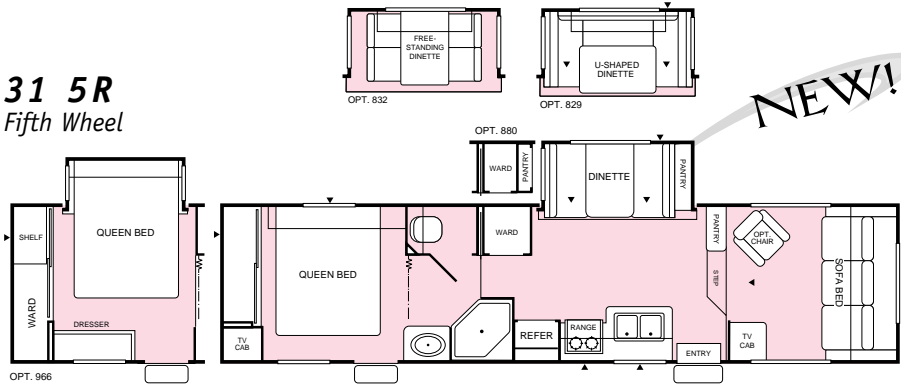
27 5J Fifth Wheel



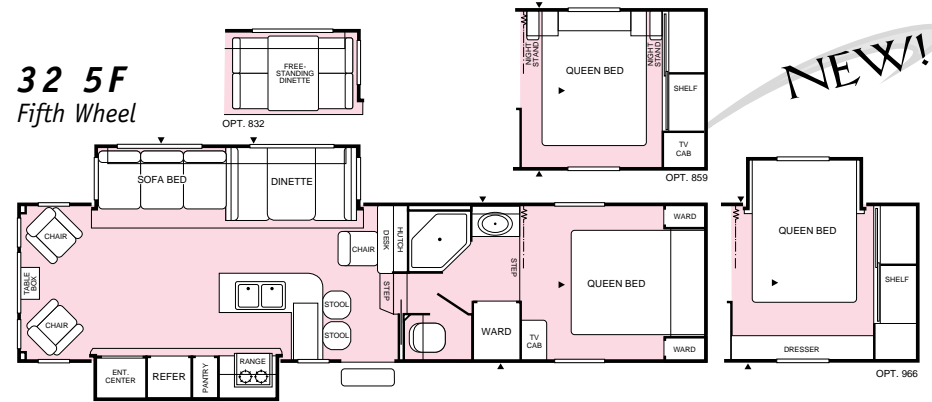
▲ = Exterior Storage

Prowler LS Floor Plans

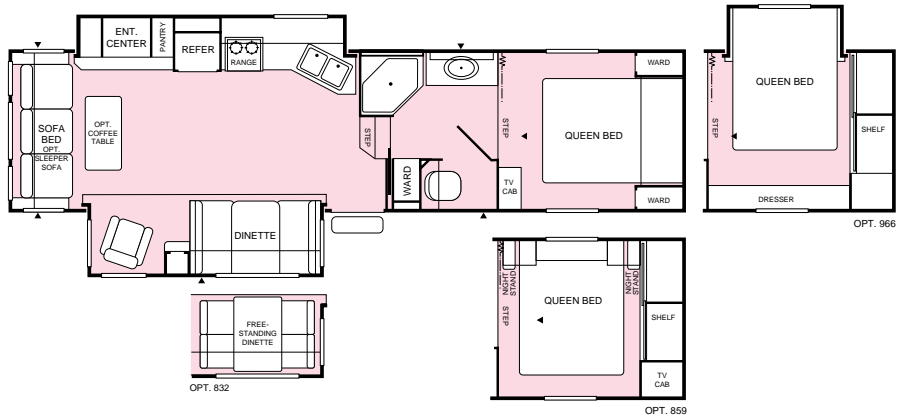
31 5R
Fifth Wheel



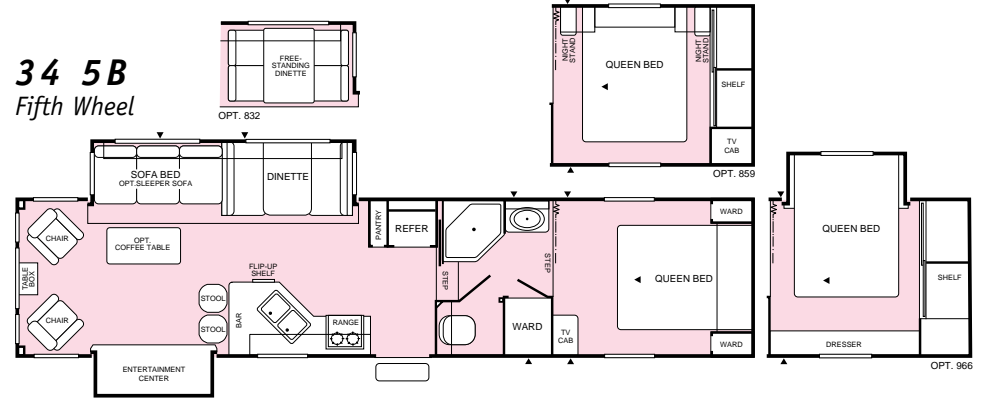
32 5F
Fifth Wheel



32 5D
Fifth Wheel



34 5B
Fifth Wheel



▲ = Exterior Storage

Prowler LS Standard Features

Exterior

- Smooth Fiberglass Sidewalls
- Construction Steel Channel or I-Beam, Cambered Chassis
- Prewired for DSS Satellite
- Tandem Axle w/4-Wheel Electric Brakes
- Radial Ply Tires w/White Spoke Wheels
- Rear Bumper w/Sewer-Hose Carrier
- Retractable Non-Skid Double or Triple-Entry Step
- Radius Locking, Insulated Luggage Doors w/Finger Pulls
- Front Radiused Rockguard Awning (Select Models)
- One-Piece Seamless Rubber Roof
- Engineered Radius Roof Truss Rafters
- R-7 Blanket Fiberglass Insulation
- 30" Wide Main Entry Door w/Window (Most Models)
- Flush Combo Entry Latch/Dead Bolt Lock
- Reinforced Screen Door w/Lock Shield & Kick Panel
- Tinted Windows
- LPG Tank Cover (Travel Trailers)
- Skylight Roof Vents
- A&E® Patio Awning
- Convenience Lighting-Hitch and Roadside Utility
- Wall-Switched Doorside Patio Light
- Welded Dual Battery Rack (Travel Trailers)
- Waste Tank Single-Point Termination Valve
- Sonic-Welded, Automotive-Style Clearance Lights
- G.F.I. Protected 120V Duplex Receptacle

Interior

- Quality Furniture by Flexsteel®
- Color-Coordinated Designer Interiors
- Oak Frame Cabinet Doors w/Oak Raised Inserts
- Face-Frame Cabinet Construction
- Overhead Dinette Storage Cabinet
- Box-Wrapped Valance Window Treatment w/Privacy Lambrequins
- Living Area & Bedroom Carpet w/Foam Padding
- Innerspring Mattresses
- Decor-Coordinated Bedspread w/Pillow Shams
- Wall-Mounted 120V Decor Light
- Wainscot Molding
- Miniblinds Throughout (Except Bunks)
- Curtains in Bunk Area
- Magazine Rack (Most Models)
- Flush Floor Slide-Out (Select Models)

Galley

- Double-Bowl Porcelain Sink
- Single-Lever Residential Faucet
- High-Pressure Laminate Countertop
- Overhead Storage Cabinet Above Sink
- Pantry Cabinet w/Shelves (Most Models)
- 120V Appliance Receptacle at Countertop
- Large Pot/Pan Drawer (Most Models)
- Knife Block

Bath

- Large Lavy Bowl
- Medicine Cabinet w/Mirrored Oak Door
- Foot Operated Fresh-Water Flush Toilet
- One-Piece ABS Tub Walls
- 12V Power Roof Exhaust Vent
- Shower Curtain
- G.F.I. Protected 120V Duplex Receptacle
- Wall-Switched Ceiling Light
- Skylight in Tub/Shower
- Soap Dish
- Cup/Toothbrush Holder

Appliances/Equipment

- Electronic Microwave Oven w/Turntable
- Dometic® Double Door LP/Electric Refrigerator
- Magic Chef® 3-Burner, High-Output Range w/Oven
- Range Hood w/12V Light and Exhaust Fan
- Wall-Mounted Systems Monitor Panel
- LP/D.S.I. Fast Recovery 6-Gallon Water Heater
- Water Heater Bypass
- hydroflame® Forced Air, D.S.I. Furnace w/Thermostat
- In-Floor Rigid Heat Ducting
- In-Ceiling Rigid Air Conditioning Ducting
- Dual 7-Gallon LPG Tanks w/Regulator & Auto-Changeover
- Smoke Detector
- Fire Extinguisher

- TV Antenna
- Freeze-Resistant Water Lines
- LPG Leak Detector
- Dustbuster® (Vacuum)

Electrical

- Electronic Converter w/Built-in Battery Charger
- 120V Central Electrical Panel
- 120V Duplex Receptacles Throughout
- 120V Ground Fault Circuit Protection
- 120V Patio Receptacle
- Wall-Switched Interior Lights
- Prewired for Roof Air Conditioner
- AM/FM Cassette Stereo
- Cable TV Hook-Up
- 12V Power Jack (Fifth Wheels Only)

Prowler LS Popular Options

- Coleman® Ducted Central Air Conditioning
- Free-Standing Swivel Rocker
- Water Purifier
- Plank Flooring
- 120V/LP/D.S.I. Fast Recovery Water Heater
- Spare Tire
- AM/FM CD Player

*Not all models include all features.
See your dealer for complete details.*

Prowler LS Specifications

Prowler LS Models	26 H	26 T	27 F	29 B	31 G	34 P	37 W	24 5P
GVWR (<i>Gross Vehicle Weight Rating</i>)	8,300	7,300	8,600	8,800	9,100	10,100	10,400	8,100
Gross Dry Weight ¹	6,180	5,200	6,430	6,610	6,830	7,650	7,830	6,230
Carrying Capacity ²	2,120	2,100	2,170	2,190	2,270	2,450	2,570	1,870
Hitch Dry Weight ¹	670	660	870	940	860	1,020	1,100	1,020
Dry Axle Weight ¹	5,570	4,540	5,560	5,670	5,970	6,630	6,730	5,210
Length ³	27' 8"	28' 2"	29' 2"	30' 6"	31' 10"	35' 0"	38' 5"	25' 2"
Width ⁶	8' 0"	8' 0"	8' 0"	8' 0"	8' 0"	8' 0"	8' 0"	8' 0"
Height ⁴	9' 6"	9' 0"	9' 6"	9' 6"	9' 6"	9' 6"	9' 6"	11' 7"
Tires – Size (<i>Radials</i>)	ST225/ 75R 15(C)	ST205/ 75R 15(C)	ST225/ 75R 15(C)	ST225/ 75R 15(C)	ST225/ 75R 15(C)	ST225/ 75R 15(D)	ST225/ 75R 15(D)	ST205/ 75R 15(C)
Fresh Water Tank ⁵ – gal.	40	40	40	40	40	40	40	40
Gray Water Holding Tank ⁵ – gal.	40	40	40	40/21	40	40/21	40	40/21
Black Water Holding Tank ⁵ – gal.	40	40	40	40	40	40	40	40
LPG Capacity – gal.	14	14	14	14	14	14	14	14
Bed Size – Standard	60" x 75" Queen	60" x 75" Queen	60" x 75" Queen	60" x 75" Queen	60" x 75" Queen 29" x 74" Bunk (2)	60" x 75" Queen	60" x 75" Queen 29" x 76" Bunk (2)	60" x 75" Queen
Bed Size – Option		32" x 75" Twin (2)					60" x 75" Queen	
Maximum Sleeping Capacity	6	6	6	6	8	6	11	6

Prowler LS Models (Cont.)	27 5J	30 5G	30 5X	31 5R	32 5D	32 5F	34 5B
GVWR (<i>Gross Vehicle Weight Rating</i>)	9,400	11,300	10,900	12,100	12,100	12,300	13,600
Gross Dry Weight ¹	7,250	8,100	7,830	8,580	8,890	8,810	9,650
Carrying Capacity ²	2,150	3,200	3,070	3,520	3,210	3,490	3,950
Hitch Dry Weight ¹	1,220	1,590	1,590	1,720	1,820	1,690	1,920
Dry Axle Weight ¹	6,030	6,510	6,240	6,860	7,070	7,120	7,730
Length ³	27' 10"	32' 0"	31' 3"	33' 4"	32' 11"	33' 10"	35' 10"
Width ⁶	8' 0"	8' 0"	8' 0"	8' 0"	8' 0"	8' 0"	8' 0"
Height ⁴	11' 7"	11' 7"	11' 7"	11' 7"	11' 9"	11' 9"	11' 9"
Tires – Size (<i>Radials</i>)	ST225/ 75R 15(C)	ST225/ 75R 15(D)	ST225/ 75R 15(C)	LT215/ 85R 16(E)	ST225/ 75R 15(D)	LT235/ 85R 16(E)	LT235/ 85R 16(E)
Fresh Water Tank ⁵ – gal.	40	50	50	50	50	50	50
Gray Water Holding Tank ⁵ – gal.	40/21	40	40/21	40	40	40	40/21
Black Water Holding Tank ⁵ – gal.	40	40	40	40	40	40	40
LPG Capacity – gal.	14	14	14	14	14	14	14
Bed Size – Standard	60" x 75" Queen	60" x 80" Queen	60" x 80" Queen	60" x 75" Queen	60" x 80" Queen	60" x 80" Queen	60" x 80" Queen
Bed Size – Option		60" x 75" Queen	60" x 75" Queen	60" x 75" Queen	60" x 75" Queen	60" x 75" Queen	60" x 75" Queen
Maximum Sleeping Capacity	6	6	6	6	6	6	6

¹ All dry weights are based on standard model features and do not include optional features or equipment.

² Carrying capacity is determined by subtracting Gross Dry Weight from GVWR. Carrying capacity includes all fluids, optional equipment and personal cargo.

³ Trailer length includes 3' 6" for hitch, fifth wheel includes pin box.

⁴ Add 12" if equipped with optional roof air conditioner.

⁵ Approximate gallons.

⁶ Add 3" for awning.

Prowler Safety, Comfort and Quality



Name Brand Furniture and Appliances

Flexsteel®, Magic Chef® and Dometic® are just a few of the respected brand names you will find in your Prowler to insure comfort, quality, and reliability.



Kitchen Cabinet Storage

Prowler's kitchen cabinets are residential in size—deep enough and wide enough to accommodate full-size dishes and tall enough for large cereal boxes.



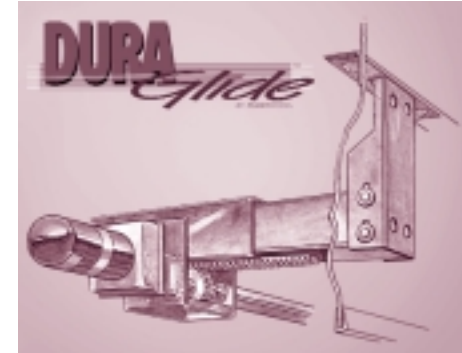
Solid Construction

Whether it's steel, aluminum, fiberglass or wood, we always choose the most appropriate materials for use in our towables.



Water Purifier

Pure drinking water is an important concern when you travel in your Prowler. To ensure a good supply have your Prowler equipped with this optional water purifier.



Dura-Glide™ Slide-Room System

Our exclusive Dura-Glide™ System is the most reliable and durable available. Powered by an electric motor, its simple rack-and-pinion mechanism assures smooth, even, tooth-by-tooth operation.

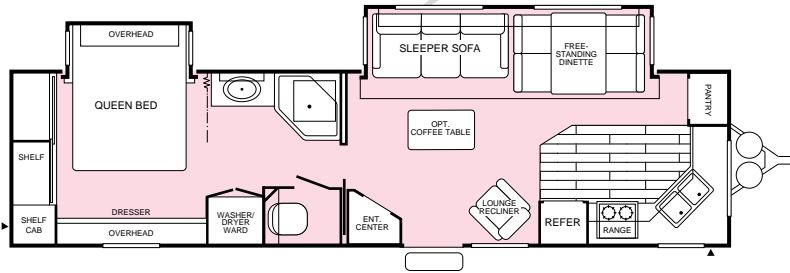


Centralized Water Area

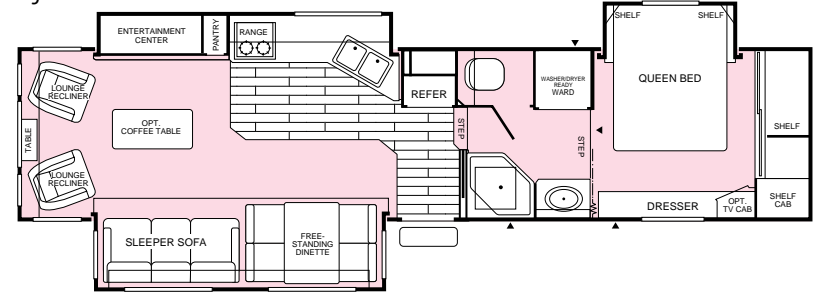
The water connections have been grouped together to make hooking up your RV easy and quick.

Prowler LSI Floor Plans

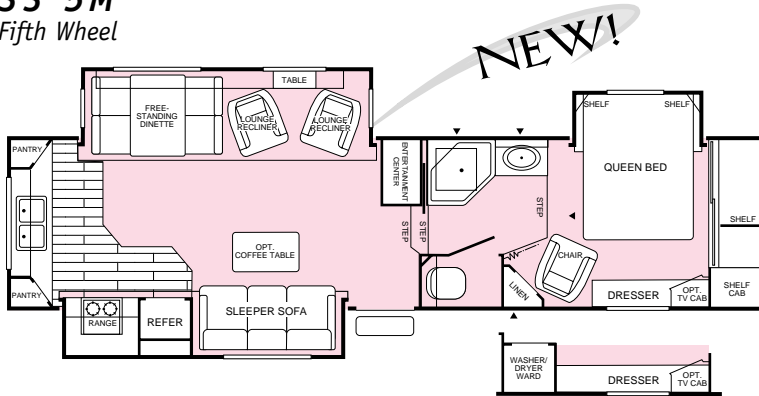
34 P



34 5L
Fifth Wheel

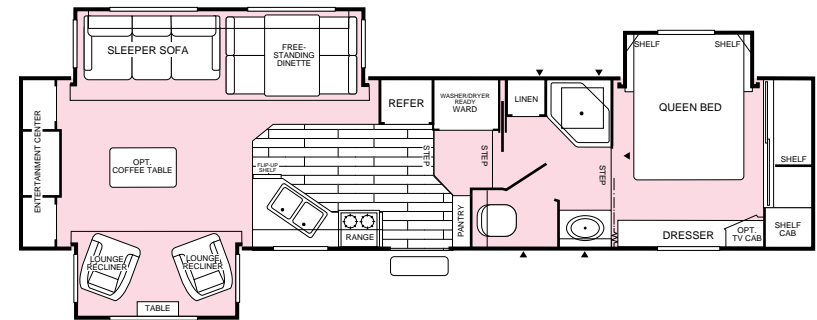


33 5M
Fifth Wheel



OPT. 125 & 126

35 5Y
Fifth Wheel



▲ = Exterior Storage

Prowler LSI Standard Features and Specifications

Exterior

- Smooth Fiberglass Exterior Sidewalls
- Fiberglass Front Cap
- Aluminum Frame Construction
- Tufcap® Fiberglass Rear Cap
- Dual Battery Compartment or Rack
- Integrated Tail Lights
- One-Piece Rubber Roof
- Fiberglass Insulation
- 30" Wide Radiused Main Entry Door
- Flush Mount, Combo Entry Latch/Dead Bolt Lock
- Convenience Lighting – Hitch/LP Tanks/Roadside
- Large Doorside Security Light
- High Strength Welded I-Beam, Cambered Chasis
- Exterior Shower
- Radial Ply Tires w/White Spoke Wheels
- Polyethylene Wheel Well Skirts (Fifth Wheels Only)
- Non-Skid Retractable Triple Entry Steps
- Locking, Insulated, Radiused Luggage Doors w/Finger Pulls
- Tandem Axle w/Four-Wheel Electric Brakes
- Large, Solar-Reflective White Framed Radiused Windows (Torque & Slider)
- 12V Power Jack (Fifth Wheels Only)
- Ladder

- Shock Absorbers
- In-Chassis Spare Tire Carrier
- Pass-Through Exterior Storage (Fifth Wheels Only)
- Large Super Slide-Out Living Area
- Bedroom Slide-Out w/Dresser
- Fully Enclosed, Heated Holding Tanks w/Remote Valve
- Power Landing Gear (Fifth Wheels Only)
- A&E® Patio Awning

Interior

- 2 Color-Coordinated Decors
- Full Face Frame Cabinetry
- Oak Framed Cabinet Doors w/Oak Raised Inserts
- Deluxe Carpet w/Foam Pad in Living Room and Bedroom
- Upgraded Innerspring Mattress
- Bed Top Lift Mechanism to Storage Area
- Oak Dinette Table w/Four Chairs
- Quality Flexsteel® Sleeper Sofa
- Free-Standing Flexsteel® Lounge Recliner
- Decor Wall Border w/Wainscot Molding
- Decor-Coordinated Bedspread w/Pillow Shams
- 120V Wall Mount Decor Lights in Living Area
- 120V Decor Ceiling Light in Dining Area
- Designer Window Treatments with Miniblinds

- Adjustable Reading Lights Over Beds & Chairs
- Magazine Rack
- Plank Flooring at Entry

Appliances/Equipment

- Large Dometic® Double Door LP/Electric Refrigerator
- Raised Panel Refrigerator Door
- 3-Burner, High-Output Range w/Oven
- Range Hood w/Light and Exhaust Fan
- Wall-Mounted Systems Monitor Panel
- LP/120V D.S.I. Water Heater – 10 Gallon
- hydroflame® D.S.I. Furnace w/Thermostat
- In-Floor Rigid Heat Ducting
- In-Ceiling Rigid Air Conditioning Ducting
- Deluxe AM/FM Stereo CD Player
- Park Cable TV Hook-Up Connection
- Dual 7-Gallon LPG Tanks w/Sight Gauge & Auto-Changeover
- Electronic Microwave Oven w/Turntable
- Smoke Detector
- Fire Extinguisher
- TV Antenna
- Satellite Dish Ready
- Phone Jack
- Washer/Dryer Ready (Most Models)
- Dustbuster® (Vacuum)

Galley

- Double-Bowl White Porcelain Sink w/Cutting Board Cover
- High-Pressure Laminate Countertop w/Oak Edging
- Spice Tray
- Plank Flooring
- Knife Block

Bath

- Large Medicine Cabinet w/Mirrored Door
- One-Piece ABS Tub/Shower Walls
- Glass Tub Enclosure
- Bath Skylight
- 12V Power Roof Exhaust Vent
- Fresh Water, Foot-Operated Flush Toilet
- Wall-Switched Ceiling Light
- 3-Bulb Vanity Light
- Soap Dish
- Cup/Toothbrush Holder

Electrical

- 40-Amp, 12V All Electronic Converter w/Battery Charger
- 120V Central Electrical Panel
- 120V Receptacles Throughout
- 120V Ground Fault Circuit Protection
- 120V Patio Receptacle
- Wall-Switched Interior Lights
- Reading Lights
- Fluorescent Lights (Galley)
- Electric Slide-Outs

Prowler LSI Popular Options

- Coleman® Ducted Central Air Conditioning
- Water Purifier
- Generator Ready
- Double Insulation in Ceiling and Floor
- Full Residential Entertainment Center w/TV, VCR & CD Player w/Changer
- Day/Night Shades Throughout
- Smooth High-Gloss Gel-Coat Fiberglass Exterior Sidewalls

Not all models include all features. See your dealer for complete details.

Prowler LSI Models

	34 P	33 5M	34 5L	35 5Y
GVWR <i>(Gross Vehicle Weight Rating)</i>	10,400	13,100	13,700	13,600
Gross Dry Weight ¹	7,930	10,180	10,550	10,430
Carrying Capacity ²	2,470	2,920	3,150	3,170
Hitch Dry Weight ¹	1,100	1,850	2,030	2,160
Dry Axle Weight ¹	6,830	8,330	8,520	8,270
Length ³	34' 10"	34' 7"	35' 10"	36' 3"
Width ⁶	8' 0"	8' 0"	8' 0"	8' 0"
Height ⁴	9' 6"	11' 9"	11' 9"	11' 9"
Tires – Size <i>(Radials)</i>	ST 225/ 75R 15(D)	LT 235/ 85R 16(E)	LT 235/ 85R 16(E)	LT 235/ 85R 16(E)
Fresh Water Tank ⁵ – gal.	40	60	60	60
Gray Water Holding Tank ⁵ – gal.	40/21	55/21	40/40	40/21
Black Water Holding Tank ⁵ – gal.	40	40	40	40
LPG Capacity – gal.	14	14	14	14
Bed Size – Standard	60" x 75" Queen	60" x 75" Queen	60" x 75" Queen	60" x 75" Queen
Maximum Sleeping Capacity	4	4	4	4

¹ All dry weights are based on standard model features and do not include optional features or equipment.

² Carrying capacity is determined by subtracting Gross Dry Weight from GVWR. Carrying capacity includes all fluids, optional equipment and personal cargo.

³ Trailer length includes 3'6" for hitch, fifth wheel includes pin box.

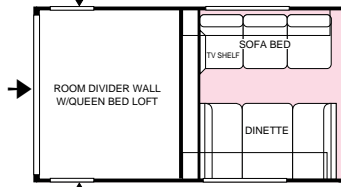
⁴ Add 12" if equipped with optional roof air conditioner.

⁵ Approximate gallons.

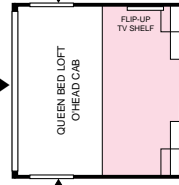
⁶ Add 3" for awning.

Prowler SUT Floor Plans and Specifications

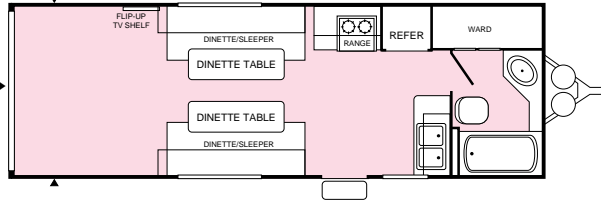
24 B



OPT. 377



OPT. 378

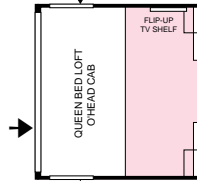


33 5G
Fifth Wheel

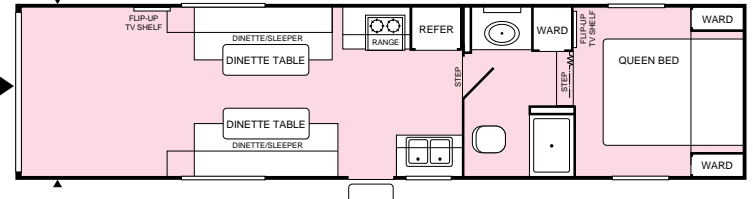


OPT. 377

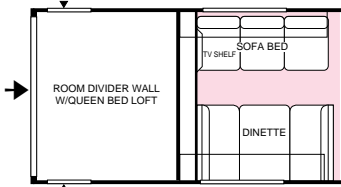
OPT. 376



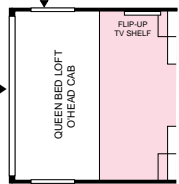
OPT. 378



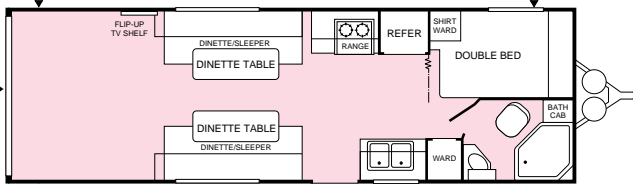
26 A



OPT. 377



OPT. 378



Prowler SUT Models	24 B	26 A	33 5G
GVWR (Gross Vehicle Weight Rating)	9,500	9,600	11,600
Gross Dry Weight ¹	6,010	6,150	7,480
Carrying Capacity ²	3,490	3,450	4,120
Hitch Dry Weight ¹	820	920	1,850
Dry Axle Weight ¹	5,190	5,230	5,630
Overall Length ³	27' 10"	29' 7"	33' 7"
Width ⁶	8' 5"	8' 5"	8' 5"
Height ⁴	11' 3"	11' 3"	11' 3"
Storage Length – Standard	13' 4"	13' 7"	14' 7"
Storage Length – w/Optional Wall	7' 1"	7' 1"	7' 1"
Tires – Size (Radials)	ST225/75R 15(D)	ST225/75R 15(D)	ST225/75R 15(D)
Fresh-Water Tank ⁵ – gal.	50	50	50
Gray-Water Holding Tank ⁵ – gal.	40	40	40
Black-Water Holding Tank ⁵ – gal.	40	40	40
LPG Capacity – gal.	14	14	14
Bed Size – Standard	38" x 76" Dinette/Sleeper	49" x 78" Double	60" x 80" Queen
		38" x 76" Dinette/Sleeper (2)	38" x 76" Dinette/Sleeper (2)
Bed Size – Option	60" x 93" Queen Loft	60" x 93" Queen Loft	60" x 93" Queen Loft
Maximum Sleeping Capacity	6	8	8

¹ All dry weights are based on standard model features and do not include optional features or equipment.

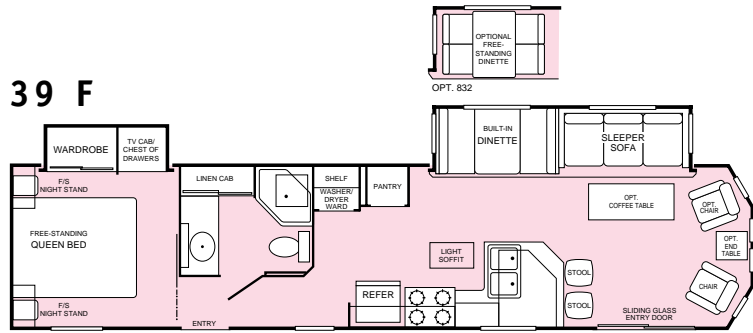
² Carrying capacity is determined by subtracting Gross Dry Weight from GVWR. Carrying capacity includes all fluids, optional equipment and personal cargo.

³ Trailer length includes 3'6" for hitch, fifth wheel includes pin box.
⁴ Add 12" if equipped with optional roof air conditioner.

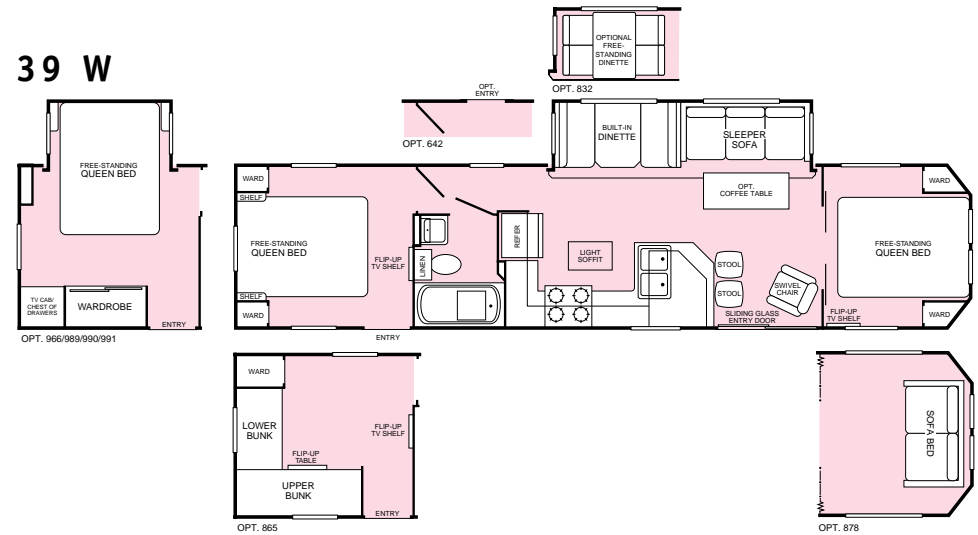
⁵ Approximate gallons.
⁶ Add 3" for awning.

➔ = Fold Down Rear Door
▲ = Exterior Storage

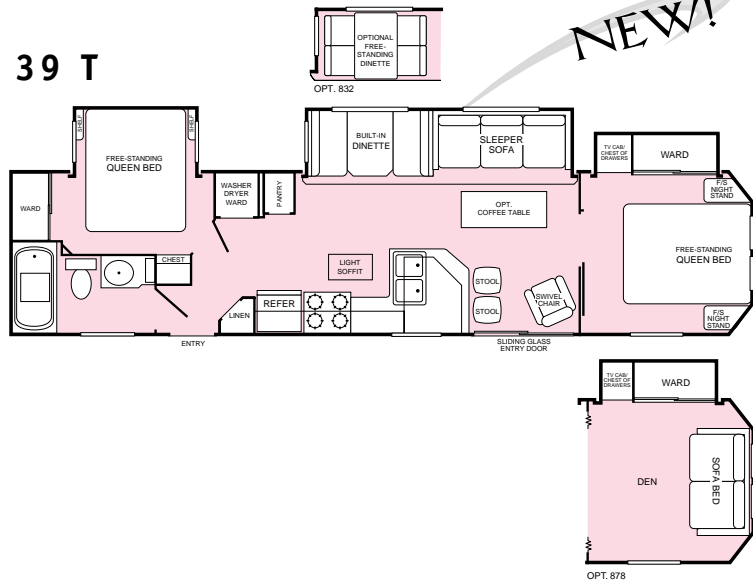
Prowler Park Floor Plans and Specifications



39 W



39 T



Prowler Park Models

	39 F	39 T	39 W
GVWR (<i>Gross Vehicle Weight Rating</i>)	11,000	11,000	10,800
Gross Dry Weight ¹	8,380	8,760	8,440
Hitch Dry Weight ¹	840	930	850
Overall Length ²	39' 10"	39' 10"	39' 10"
Body Length	37' 3"	37' 3"	37' 3"
Width	8' 6"	8' 6"	8' 6"
Height ³	10' 2"	10' 2"	10' 2"
Tires – Size (<i>Radials</i>)	ST225/75R 15	ST225/75R 15	ST225/75R 15
Tire Load Range	D	D	D
Appliance LPG Capacity – gal.	20 (Optional)	20 (Optional)	20 (Optional)
Bed Size – Standard	60" x 80" Queen	60" x 80" Queen	60" x 80" Queen
Bed Size – Option	N/A	N/A	29" x 76" Bunk (2)
Maximum Sleeping Capacity	6	8	9

¹ All dry weights are based on standard model features and do not include optional features or equipment.

² Includes 2'6" for hitch.

³ Add 12" if equipped with optional roof air conditioner.

N/A = Not available at time of printing.

FLEETWOOD RV AND MOTOR SPORTS: A WINNING TEAM

At Fleetwood RV, we've got plenty of vehicles on the road that we're proud of. But did you know we also have some special drivers we like boasting about, too? Like Winston Cup driver Dale Jarrett and the Robert Yates Racing Team. For years, Fleetwood RV has been a proud sponsor of these exciting professional racers and we invite you to take your part in the thrill of live racing action. Look for Fleetwood RV as the official Recreational Vehicle of the following race tracks to make the most of your day at the race: California Speedway, Daytona International Speedway, Phoenix International Raceway and Talladega Superspeedway.



IMPORTANT—PLEASE READ:

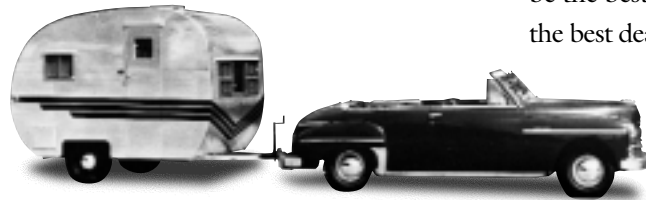
Product information and photography included in this brochure were as accurate as possible at the time of publication. Subsequent refinements may be evident in the actual product. Prices and specifications are subject to change without notice. Selected color items shown in the photographs are not part of the product unless specified. All liquid capacities are approximate and dimensions are nominal. Some models may not be available from all manufacturing plants. Floor plans are subject to change during the model year. Contact your dealer for complete details.

FLEETWOOD RV FOR 50 YEARS

Dear Friend,

This year is a very significant milestone for all of us at Fleetwood RV. Not only is this our new millennium model year, it is also the Golden Anniversary of our company. For 50 years, we have designed and built RVs so that our customers can travel the many beautiful highways and byways of America in comfort.

When Fleetwood began in 1950, we could only dream that 50 years later we would be the world's largest RV manufacturer, with



Fleetwood Sporter Trailer (circa 1950)



the most popular, highly-recognized RVs on the road. One thing's for sure—none of us could have done it alone. At Fleetwood, we have a team of the finest craftsmen, designers, engineers, and product line professionals—over 8,000 caring individuals from the plant floor to me—all working to be the best we can for you. We add to this the best dealer partners in the world so that you'll feel confident in your Fleetwood every mile of every stretch of road you travel.

Your local Prowler dealer is:

If your local dealer is not indicated, write to the address below,
call us toll-free 24-hours-a-day at

1-800-444-4905

or visit our website at www.fleetwood.com

FLEETWOOD® RV

America's Favorite Recreational Vehicle

CONTINUING THE COMMITMENT

For all of us at Fleetwood this first 50 years has been an exciting journey, from the early days of our original travel trailer and motor home prototypes to our current luxury models sporting the 50th Anniversary logo. We thank you for making us the great company we are today. Building the best product we can for your enjoyment is the key to our success, and you have my promise that we'll be here when you need us—for the next 50 years.

See you on the road!

Glenn Kummer
Chairman and CEO
Fleetwood Enterprises, Inc.

© 1999 Fleetwood Enterprises, Inc.
Litho in USA 12/99

Fleetwood Enterprises, Inc. • RV Marketing • P.O. Box 7638 • Riverside, CA 92513-7638

Second Edition
Inventory Control No. 280002