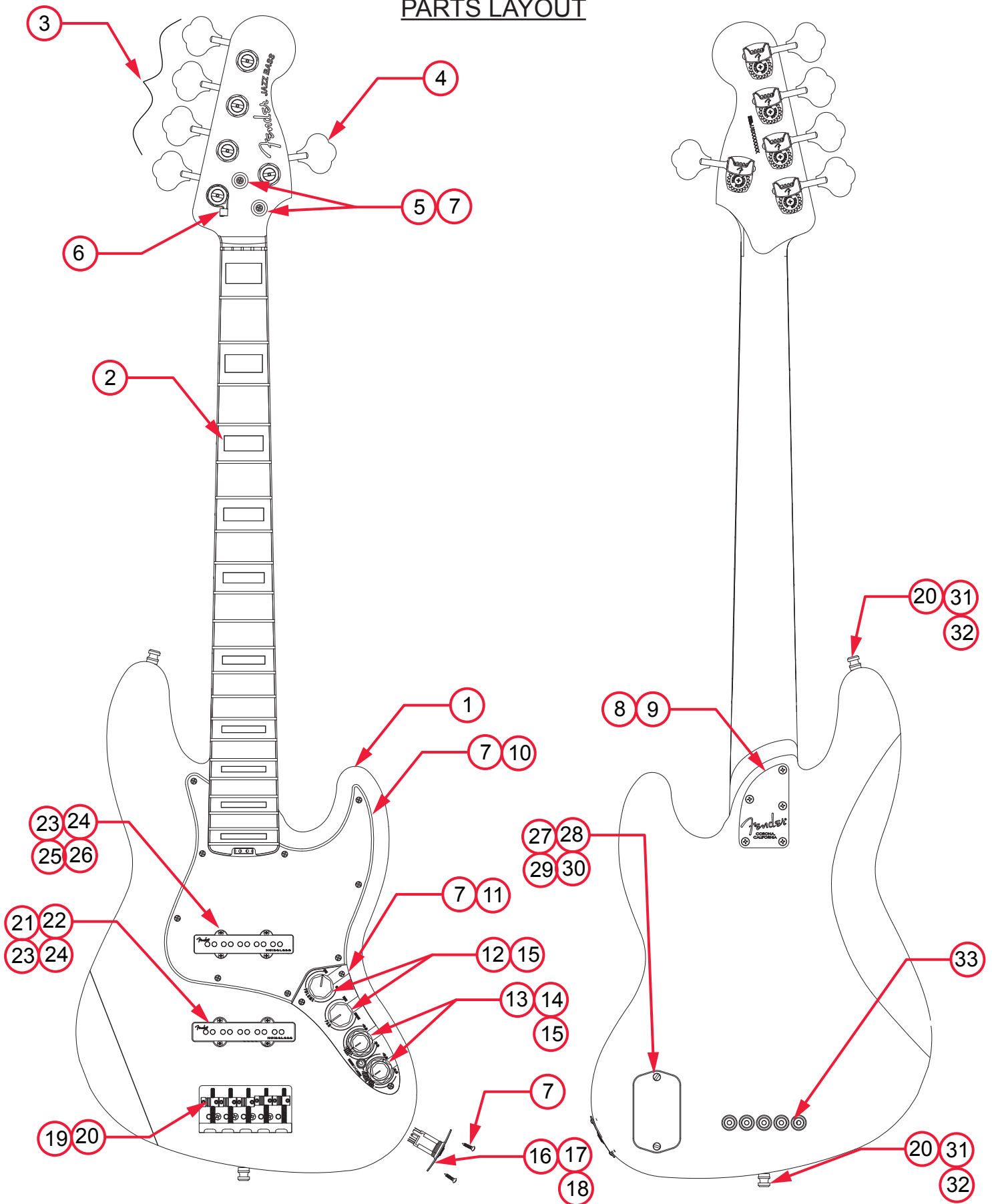


AMERICAN ELITE JAZZ® BASS V (019710XXXX)

PARTS LAYOUT



AMERICAN ELITE JAZZ® BASS V (019710XXXX)

PARTS LIST

REF#	DESCRIPTION	PART NUMBER
1	BODY AM ELITE J-BASS V 3TS	7708367500
1	BODY AM ELITE J-BASS V OWT	7708491505
1	BODY AM ELITE J-BASS V BLK	7708491506
1	BODY AM ELITE J-BASS V NAT	7708057521
1	BODY AM ELITE J-BASS V TBS	7708057552
2	NECK ASSY AM ELITE J-BASS V RW	7708056000
2	NECK ASSY AM ELITE J-BASS V MPL	7708055000
3	KEY BASS FENDER DLX SHORT CHROME	0097337000
4	KEY BASS FENDER DLX SHORT LH CHROME	0097338000
5	STRING GUIDE BASS AM SRS CHROME	0079013000
6	STRING GUIDE AM DLX BASS B-STRING CHROME	0078972001
7	SCREW SMAB 4 X 1/2 OHP NI	0015578049
8	NECK PLATE BASS 5-BOLT CHROME	0058329000
9	SCREW SMA 8 X 1-3/4 OHP NI	0015636049
10	PICKGUARD AM ELITE J-BASS V MG/BLK/MG	7708500000
10	PICKGUARD AM ELITE J-BASS V B/W/B	7708309000
11	PLATE CONTROL J-BASS AM DLX 2010	0078864000
12	KNOB LARGE SKIRTED BLACK W/SET SCREW	0991370000
13	KNOB LOWER CONCENTRIC BLACK W/SET SCREW	0049412049
14	KNOB UPPER CONCENTRIC BLACK W/SET SCREW	0049411049
15	PCB CONTROL AM ELITE J-BASS W/MTG HDWR	7708254000
16	JACK 6.3 OUTPUT	0073618000
17	FERRULE JACK RECESS FOOTBALL CHROME	0050100000
18*	WIRE HARNESS OUTPUT 4-PIN 24GA 9.5"	7708984000
19	BRIDGE ASSY HIGH MASS VINTAGE BASS V CHROME	0075128000
19A	BASE PLATE HIGH MASS VINTAGE BASS V CHROME	0075129000
19B	BLOCK HIGH MASS VINTAGE BASS V CHROME	0075130000
19C	BRIDGE SADDLE HMV BASS V 1-2	0075136000
19D	BRIDGE SADDLE HMV BASS V 3-5	0075137000
19E	SCREW 6-32 X 5/16 FHP ZI	0076154000
19F	SCREW CAP 6-32 X 1-1/2 HEX SKT BLX	0075394000
19G	SPRING TELE BRIDGE BLACK	0018872049
19H	SCREW SET 6-32 X 7/16 HEX SKT BLX NYLOK	0075354000
20	SCREW SMAB 5 X 1 OHP NI	0015610049
21	PICKUP ASSY DLX NOISELESS J-BASS V BRIDGE BLK	7708447000

*= NOT PICTURED IN DIAGRAM



AMERICAN ELITE JAZZ® BASS V (019710XXXX)

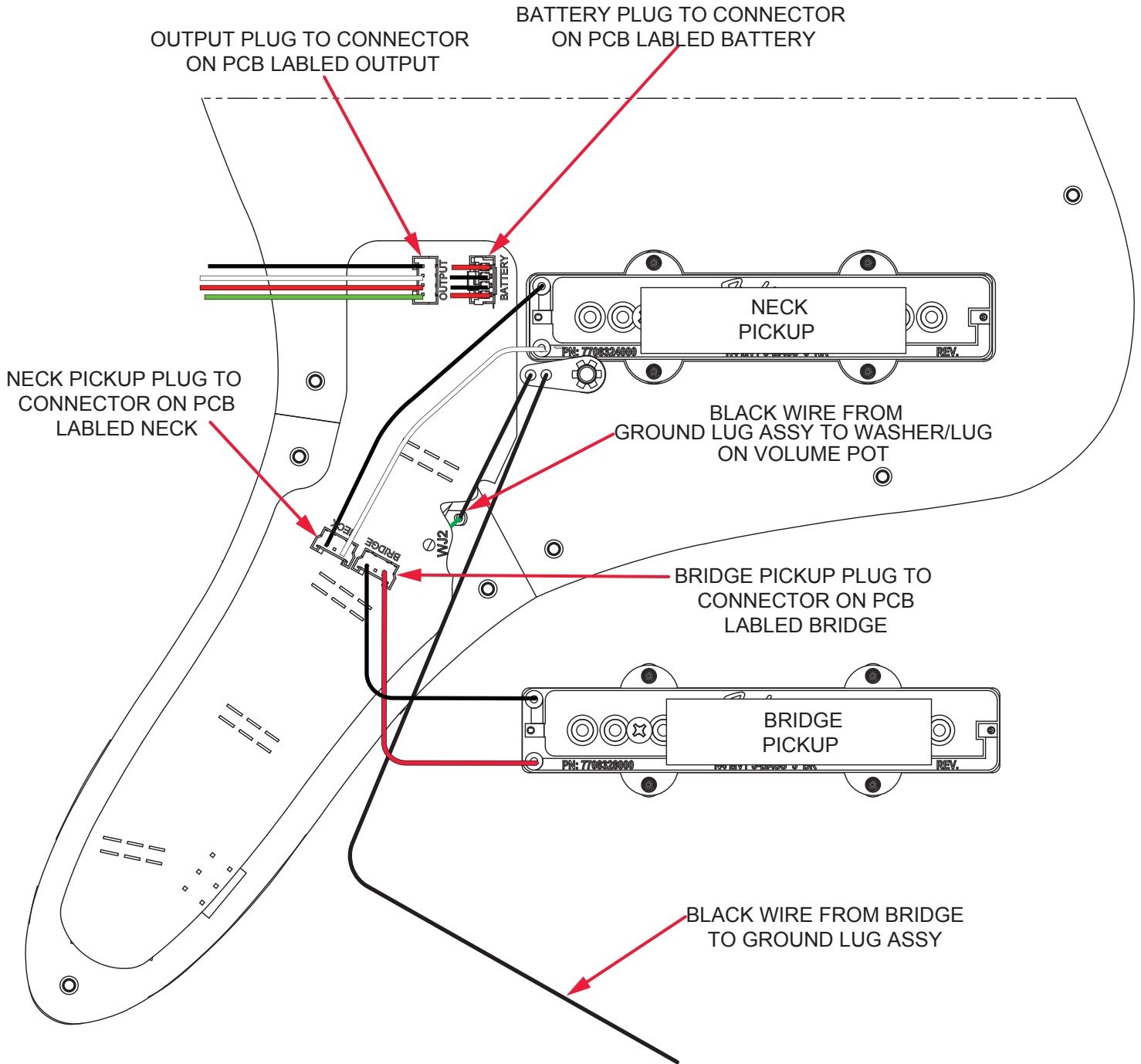
REF#	DESCRIPTION	PART NUMBER
22	COVER PICKUP J-BASS V DLX NOISELESS BRIDGE BLK	7708578020
23*	WEATHERSTRIPPING 9/16 X 1/2 OP CL NEOP	0018556049
24	SCREW 4 X 1-1/4 WOOD RD PH NI	0027035049
25	PICKAUP ASSY DLX NOISELESS J-BASS V NECK BLK	7708444000
26	COVER PICKUP J-BASS V DLX NOISELESS NECK BLK	7708623020
27	COVER BACK DELUXE BASSES	0079370000
28	INSERT THREADED #6-32 PRESS IN	0078454000
29	SCREW SPECIAL 6-32 X 5/16 OHS ZA	0078432000
30*	POWER 4-PIN HARNESS 24GA DIM BASS	7700192000
31	STRAP BUTTON STD/ELITE CHROME	0994914000
32	FELT WASHERS BLACK	0994929000
32	FELT WASHERS WHITE	0994930000
33	FERRULE STRING AS BASS	0048604049
*	CASE MOLDED AM ELITE BASS	7708556000
*	WRENCH 3/32 HEX KEY SHORT ARM	0018622000
*	WRENCH 1/16 HEX KEY SHORT ARM	0021109049
*	WRENCH HEX KEY 7/64 BALL END	0995504002

*= NOT PICTURED IN DIAGRAM



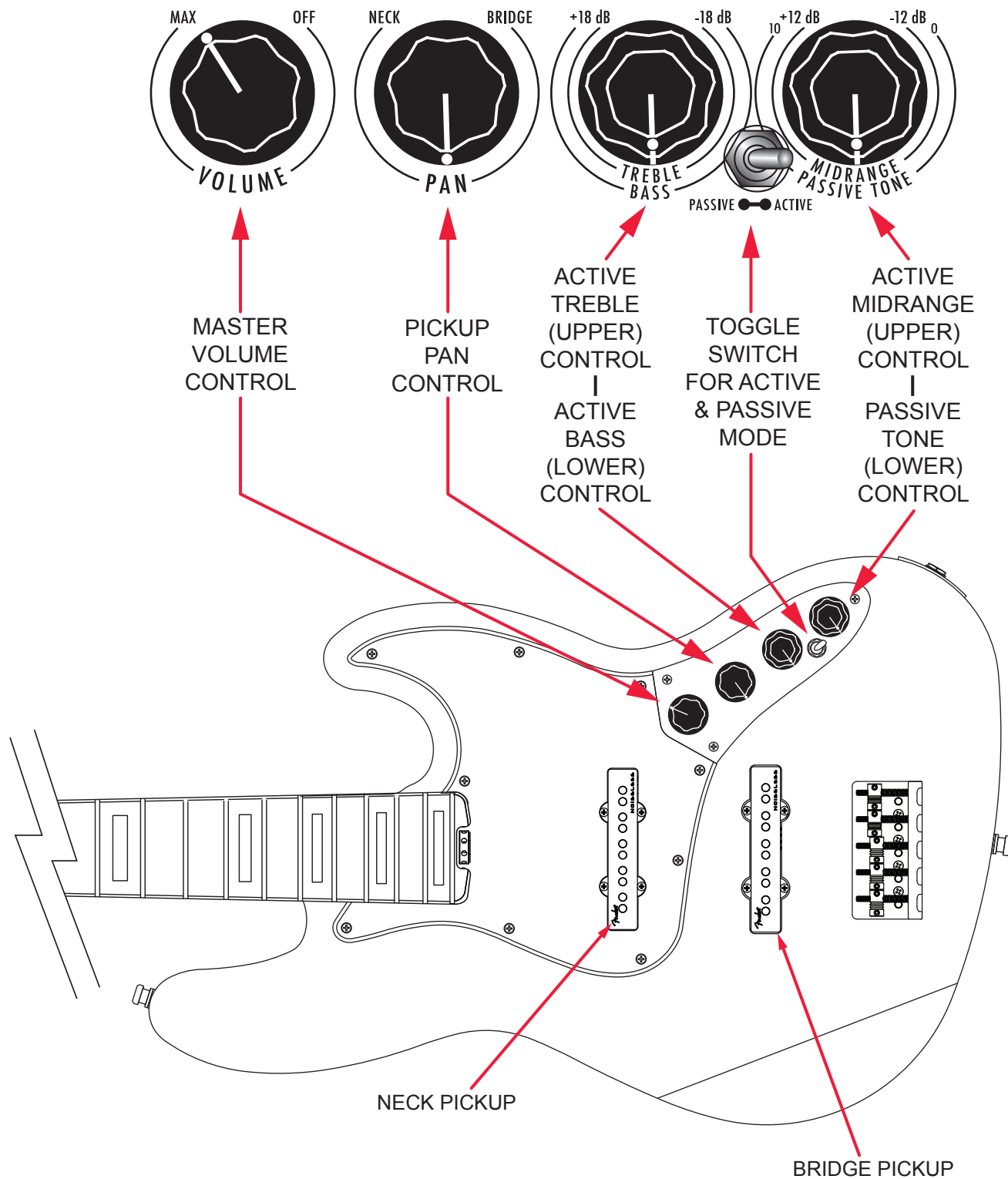
AMERICAN ELITE JAZZ® BASS V (019710XXXX)

WIRING ASSEMBLY



AMERICAN ELITE JAZZ® BASS V (019710XXXX)

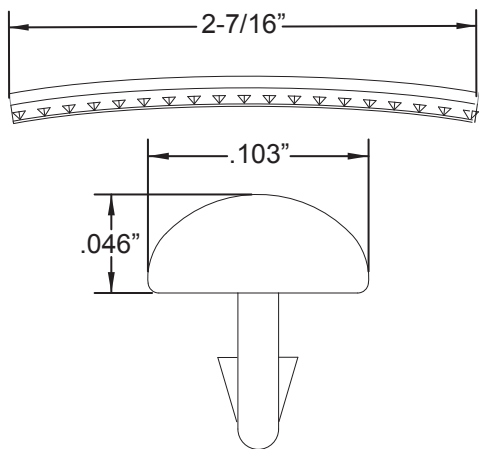
SWITCH AND CONTROL FUNCTION



AMERICAN ELITE JAZZ® BASS V (019710XXXX)

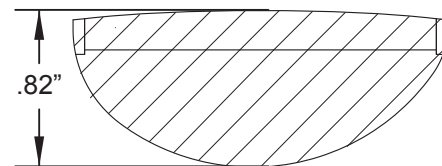
ADDITIONAL SPECIFICATION DETAIL

FRET SIZE: MEDIUM JUMBO
(FRET DIMENSIONS ARE BEFORE INSTALLATION)

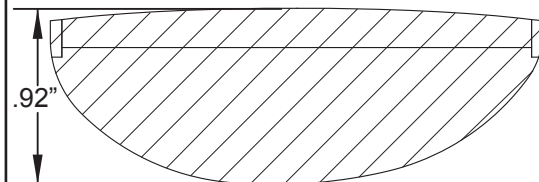


PLEASE NOTE: AS EACH NECK IS SANDED & FINISHED BY HAND, THICKNESS DIMENSIONS MAY VARY SLIGHTLY FROM THOSE SHOWN.

NECK PROFILE: MODERN "C"

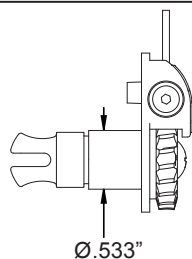


1ST FRET PROFILE

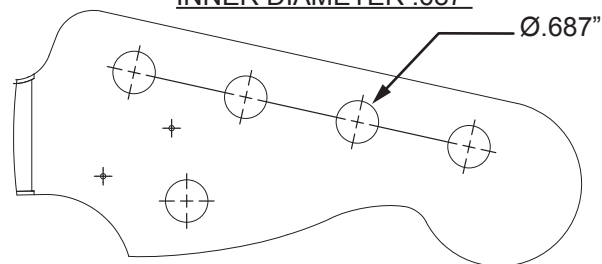


12TH FRET PROFILE

STAGGERED TUNING MACHINES SET: P/N 0097335049
OUTER SHAFT DIAMETER .533"



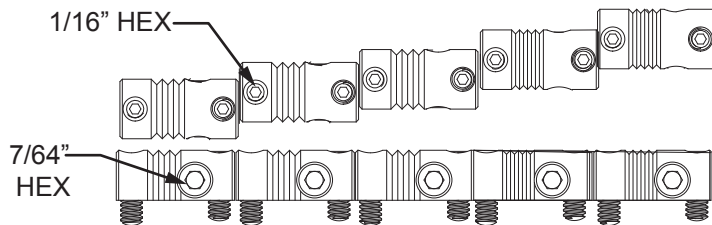
TUNING MACHINE THRU-HOLE
INNER DIAMETER .687"



SADDLE HEIGHT ADJUSTMENT WRENCH:

1/16" HEX KEY P/N 0021109049

SADDLE HEIGHT ADJUSTMENT SCREWS: P/N 0075354000



INTONATION ADJUSTMENT WRENCH:

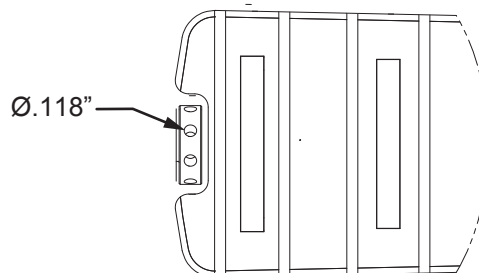
7/64 HEX KEY P/N 0995504002

TRUSS ROD THUMB WHEEL:

P/N 7708832000 GOLD - P/N 7708809000 BLACK

TRUSS ROD ADJUSTMENT WRENCH:

3/32" HEX KEY P/N 0018622000



LOGO: AM ELITE J-BASS V DECAL
APPLIED UNDER THE FINISH



PICKUP SPECIFICATIONS

POSITION	MAGNETS	DC RESISTANCE	POLARITY
NECK	ALNICO 5 UNBEVELED	13.6- 14.0KΩ	NORTH
BRIDGE	ALNICO 5 UNBEVELED	14.0 - 14.4KΩ	NORTH