

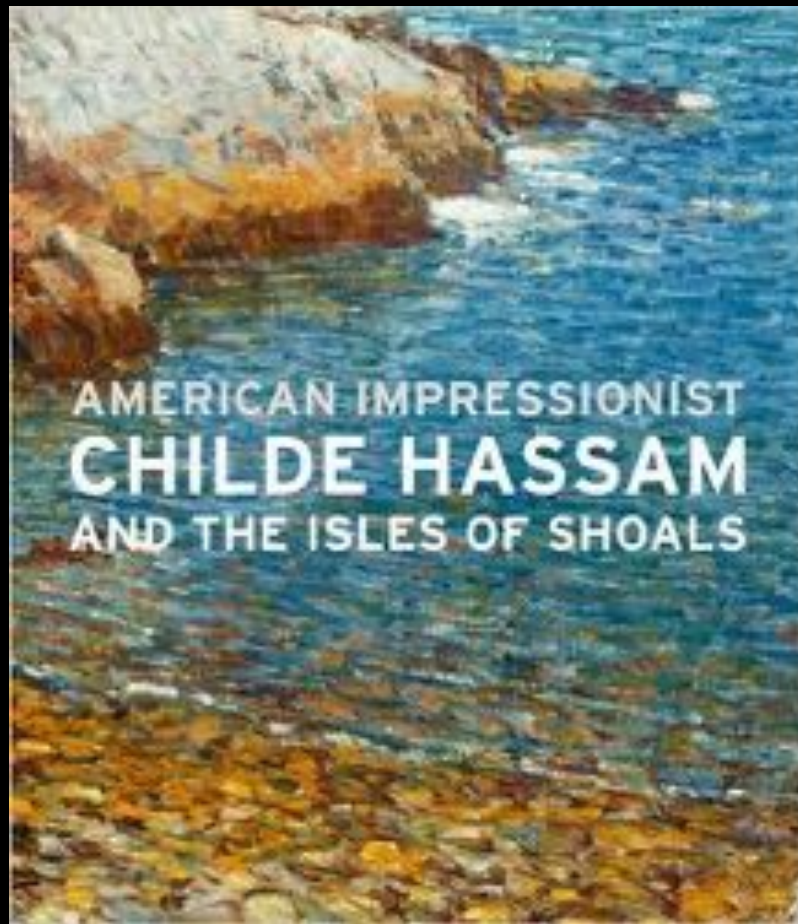
OLLI at Duke Spring 2016

Kris Door, lecturer kristinedoor.com

North Carolina Museum of Art Lectures: Wednesdays, 11:00-12:30

American Impressionist Childe Hassam and the Isles of Shoals

May 4 lecture: *Childe Hassam*





Self Portrait, 1914,
American Academy of Arts and Letters

Hassam's masthead for the newspaper the *Marblehead Messenger*, 1882



William Morris Hunt (1824-79), *Hillside with Trees*, 1872/78
oil on canvas, Art Institute of Chicago.



William Morris Hunt,
The Spouting Whale,
c. 1870, oil on canvas
Smithsonian American
Art Museum



Feeding Pigeons in the Piazza
c. 1883, watercolor,
Alan and Barbara Mirken



Columbus Avenue, Rainy Day, 1885, oil on canvas, Worcester Art Museum



Rainy Day, Boston, 1885, oil on canvas, Toledo Museum of Art



1800s



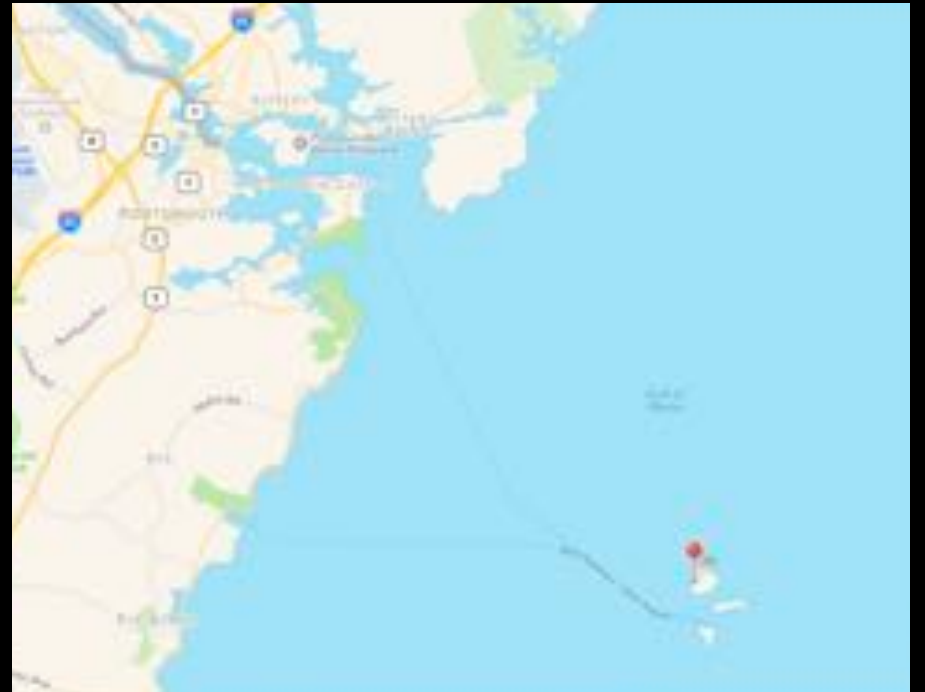
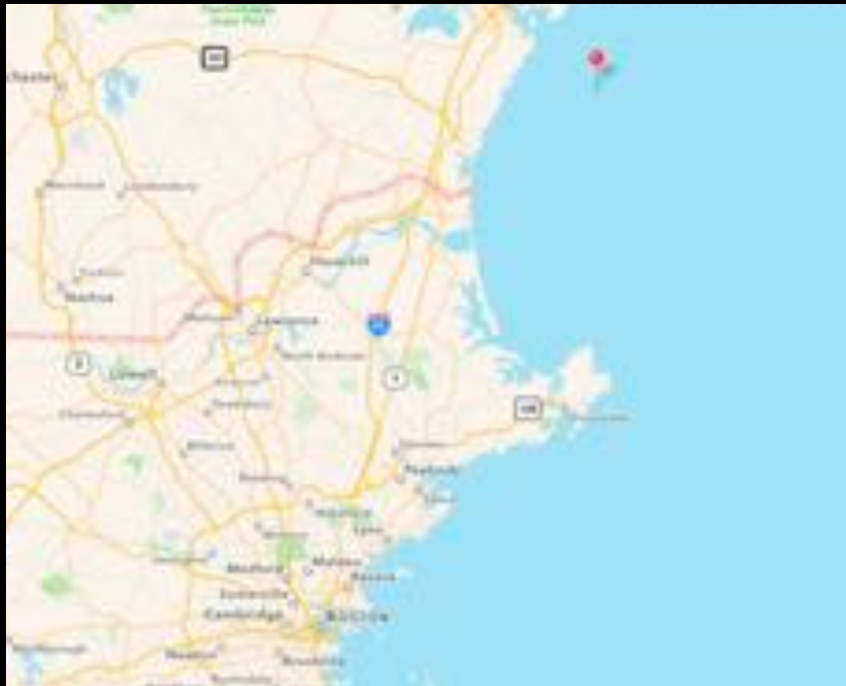
1885 painting



today

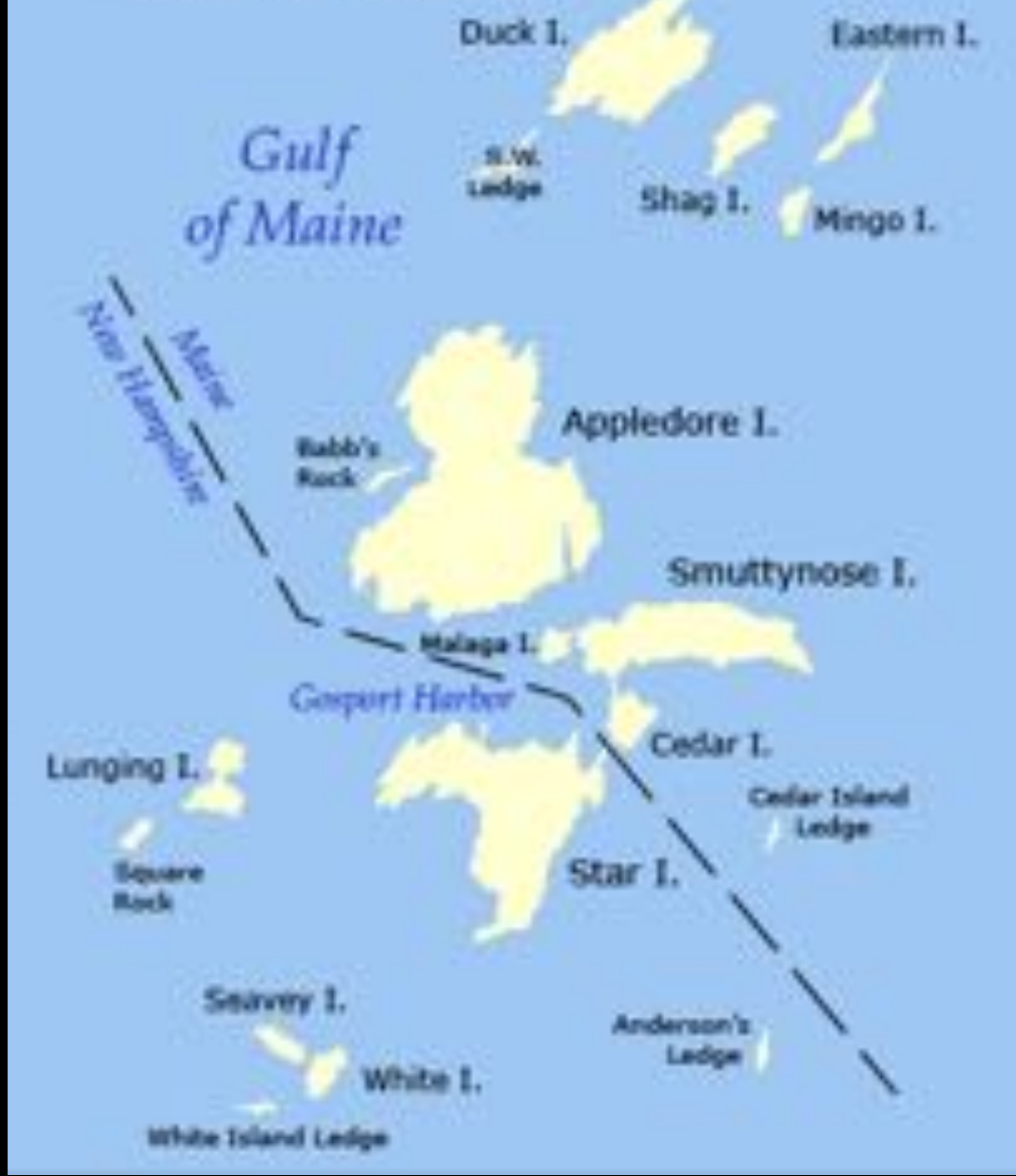








ISLES OF SHOALS





ISLES OF SHOALS OFF PORTSMOUTH, N. H.



AN IDEAL SUMMER RESORT OF THE HIGHEST CLASS
AND FULL OF HISTORIC ASSOCIATIONS
PRE-EMINENTLY THE PLACE FOR THE TIRED WARRIOR.
NO NOISE, NO DUST, NO TRAMMELS, A REST CURSE IN THESE ISLES IS A THING OF NO
ACCOUNT. THE CLIMATE IS PERFECT, THE SUNSHINE BEAMING
HIGHEST TEMPERATURE 70, AVERAGE 60 AT NOON
THE HOTEL OPENS THE LAST WEEK IN JUNE
AND CLOSERS ABOUT THE END OF SEPTEMBER
SEPTEMBER IS AN IDEAL MONTH AND GUESTS SATISFIED WITH A PLAIN TABLE AFTER
THEir SEPTEMBER CAN BE ACCOMPANIED BY SPECIAL ARRANGEMENTS UNTIL THE
END OF THE MONTH
THIS IS A GREAT RESORT FOR ANYONE SUFFERING FROM
RHEUMATISM, NEURALGIA, OR BRUISES
WHICH GUESTS HAVE BEEN VISITING THESE ISLANDS SINCE
THEir FIRST VISITATION AND ALL WHO OF THESE ISLANDS VISITORS
AND WILL COME TO US



COPYRIGHTED BY DETROIT PHOTO
10508-2-2001





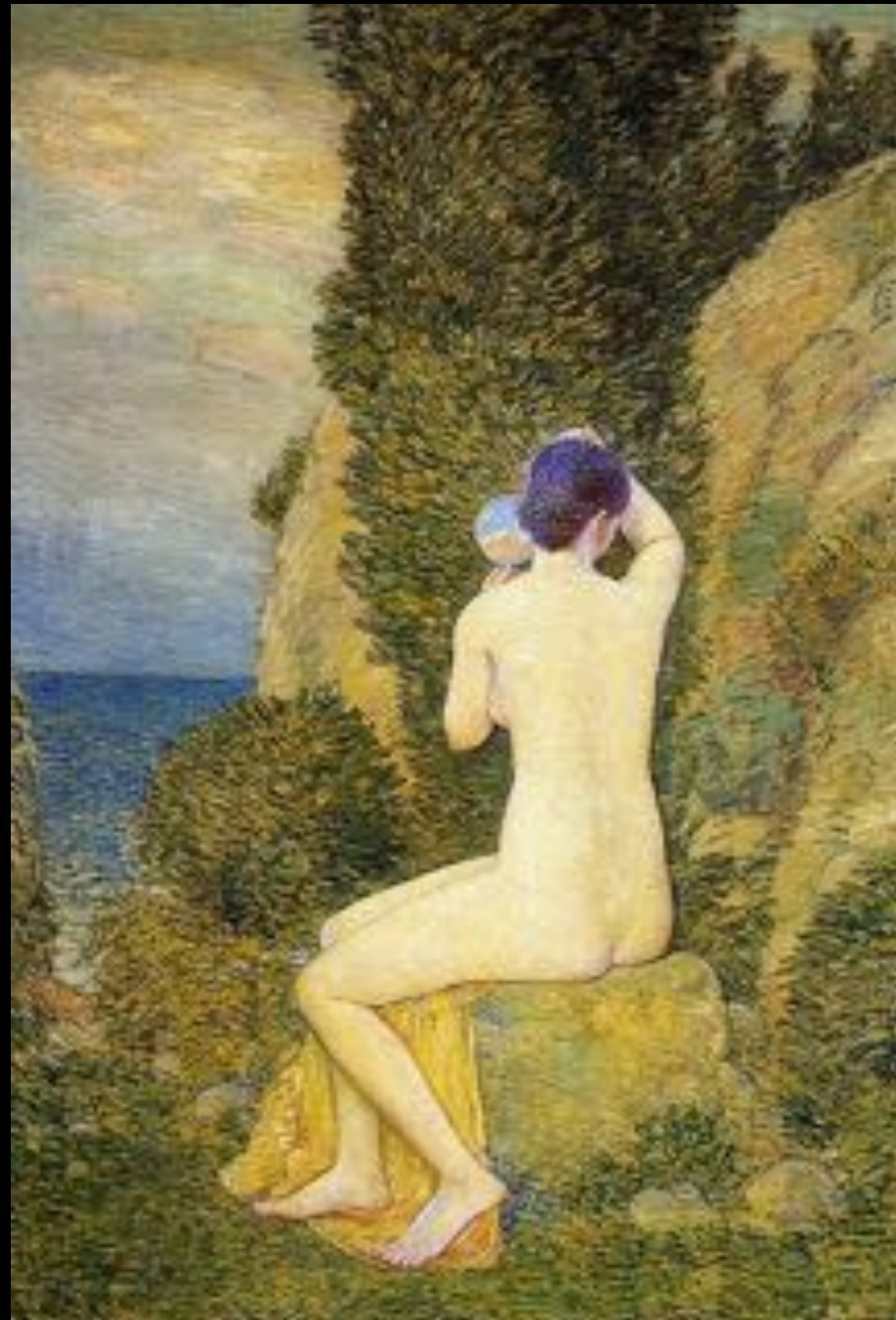
Lighthouse, 1886, watercolor,
The Mead Art Museum
Amherst College





Hassam's studio at 35, boulevard Rochechouart

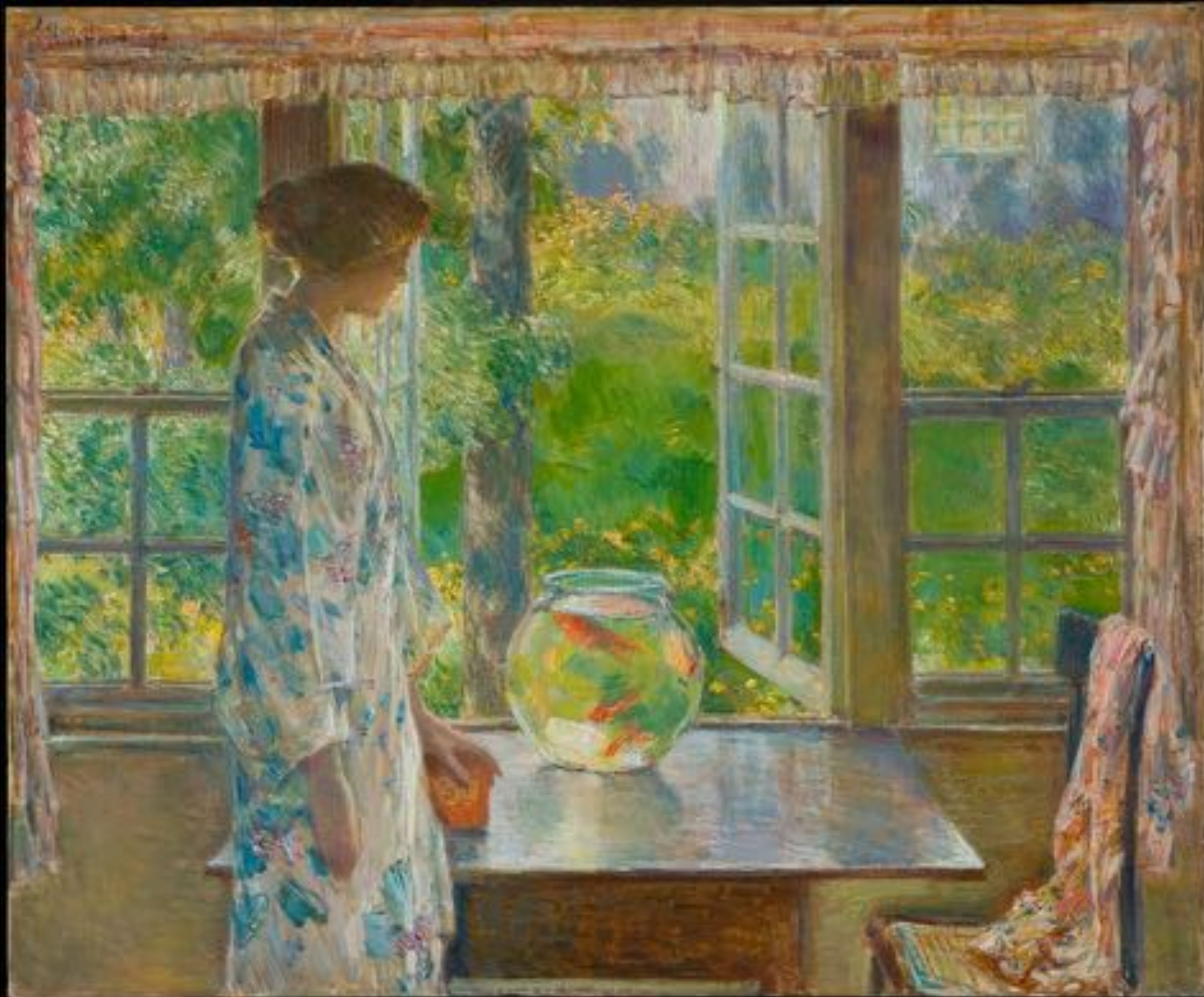
Aphrodite, Appledore,
1908, oil on canvas
American Academy
of Arts and Letters.



Against Light, 1910,
oil mounted on board,
Private Collection



Bowl of Goldfish, 1912, oil on canvas, Ball State University Museum of Art



In the Old House, 1914, oil on canvas, Lewis & Ali Sanders



James McNeill Whistler,
*Symphony in White, No. 2:
The Little White Girl*, 1864,
oil on canvas, Tate, London



John Singer Sargent.
Lady Agnew of Lochna,
1893, oil on canvas
National Gallery of Scotland



Mary Stevenson Cassatt
Portrait of Madame X
Dressed for the Matinee,
1878 NCMA



*Cab Station, Rue Bonaparte, 1887, oil on canvas,
Terra Foundation for the Arts, Chicago*



At the Grand Pix, 1887,
oil on canvas
Corcoran Gallery of Art,
Washington, DC



Edgar Degas (1834-1917), *At the Races in the Countryside*, 1869
oil on canvas MFA Boston



Grand Prix Day, 1887, oil on canvas, MFA Boston



Le Jour du Grand Prix, 1888, oil on canvas,
New Britain Museum of American Art



Flower Girl By The Seine, Paris, 1889, oil on canvas, private collection



Spring Morning in the Heart of the City, 1890, oil on canvas, Metropolitan Museum



Claude Monet,
Boulevard des Capucines
oil on canvas, 1873-74
Nelson-Atkins Museum of
Art, Kansas City



Camille Pissarro (1830-1903) *Le Boulevard des Italiens*, 1897
National Gallery of Art, Washington, DC



Camille Pissarro (1830-1903) *The Saint-Sever Bridge, Rouen: Mist*, 1896 oil on canvas NCMA





ISLES OF SHOALS off PORTSMOUTH, N. H.



AN IDEAL SUMMER RESORT OF THE HIGHEST CLASS
AND FULL OF HISTORIC ASSOCIATIONS
PRE-EMINENTLY THE PLACE FOR THE TIRED WARRIOR.
NO NOISE, NO DUST, NO TRAMMELS, A REST CURSE IN THESE ISLES IS A THING OF NO
THE CLIMATE IS PERFECT, THE SUNSHINE ABUNDANT,
HIGHEST SEASIDE TEMPERATURE 70, AVERAGE 60 BY NIGHT
THE HOTEL OPENS THE LAST WEEK IN JUNE
AND CLOSING ABOUT THE END OF SEPTEMBER.
SEPTEMBER IS AN IDEAL MONTH AND GUESTS SATISFIED WITH A PLAIN TABLE AFTER
THEir SEPTEMBER CAN BE ACCOMPANIED BY SPECIAL ARRANGEMENTS UNTIL THE
END OF THE MONTH.
THIS IS A GREAT RESORT FOR ANYONE SUFFERING FROM
RHEUMATISM, NEURALGIA, OR BRONCHITIS.
WHY GUESTS HAVE BEEN VISITING THESE ISLANDS SINCE
THEir FIRST VISIT AND ALL WHO OF THEM HAVE ENJOYED THEMSELVES
AND ONLY COME TO THE



COPYRIGHTED BY DETROIT PHOTO
10503 - 2nd Floor





The Little Pond, Appledore, 1890, oil on canvas, Art Institute of Chicago





Poppies on the Isles of Shoals, 1890, oil on canvas, Brooklyn Museum



Poppies, Isles of Shoals, 1891, oil on canvas, National Gallery DC





Poppies, Isles of Shoals, 1891, oil on canvas, National Gallery DC





Claude Monet (1840-1926) *Poppies* 1873 oil on canvas Musée d'Orsay



Claude Monet , *Poppy Field In A Hollow Near Giverny*, 1885 MFA Boston



Summer Afternoon, Isles of Shoals, c. 1891, oil on canvas,
County of Erie Pennsylvania, Erie County Public Library



Winslow Homer (1836-1910), *Northeaster*, 1895, Metropolitan Museum



George Bellows, *Dock Builders*, 1916, Promised gift to NCMA



Morning, Isles of Shoals, 1890, promised gift of Goodnight's NCMA







5482





AN ISLAND GARDEN

CELIA THAXTER

WITH PICTURES AND ILLUMINATIONS BY
CHILDE MASSAM



In the Garden (Celia Thaxter in Her Garden)
1892 oil on canvas
Smithsonian American Art
Museum



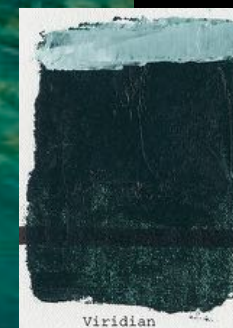
Flower Garden, c. 1892,
watercolor on paper,
George & Linda Kaufman



From the Doorway, 1892,
watercolor on paper,
Private Collection, NC

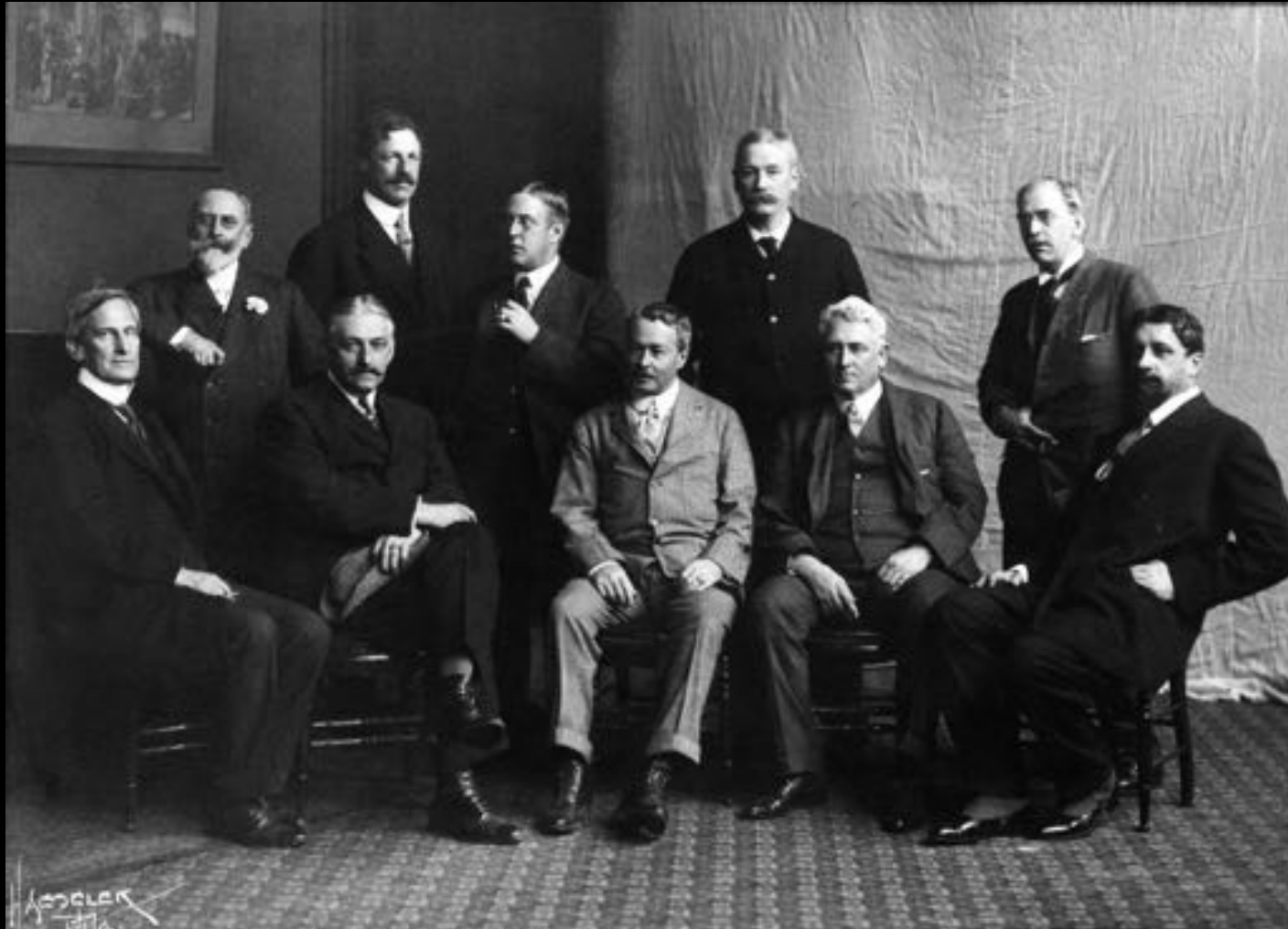


Moonlight, 1892, oil on canvas, private collector



The Spanish Stairs, Rome,
1897, oil on canvas
Los Angeles County Museum





1908 Ten American Painters (The Ten), 1908,
Haeseler Photographic Studios, Philadelphia, Pennsylvania.
Seated, left to right: Edward Simmons, Willard L. Metcalf, Childe Hassam, J.
Alden Weir, Robert Reid **Standing, left to right:** William Merritt Chase, Frank W.
Benson, Edmund C. Tarbell, Thomas Wilmer Dewing, Joseph DeCamp

White Island Light, Isles of Shoals, at Sundown, 1899, oil on canvas,
Smith College Museum of Art



Paul Signac, (1863-1935) *Cassis, Cap Lombard, Opus 196*,
1889, Gemeentemuseum Den Haag





A North East Headland, 1901, oil on canvas, National Gallery DC



The Laurel in the Ledges, Appledore, 1905, oil on canvas, NCMA, Promised gift, Goodnight's







Sunset Sky, 1905, oil on wood panel, Alexandria & Michael Altman



Sunset at Sea, 1908, oil on canvas, Private collection



James Abbott Whistler (1834-1903) *Nocturne: Blue and Silver*
– *Chelsea*, 1871, oil on wood, Tate Gallery, London



Sunset at Sea, 1911,
oil on canvas,
Private Collection



Duck Island, 1906, oil on canvas, Dallas Museum of Art





Hassam's Sites Revisited A Visual Survey

Hal Weeks

Bass's Rock



PLATE 1

Celia Thaxter's garden



PLATE 5

Hotel Reservoir (Little Pond)



PLATE 6

Bathing Pool, Bass's Cove, and southwest ledges



PLATE 8

Broad Cove



PLATE 10

Broad Cove and northeast ledges



PLATE 11

Bass's Rock



PLATE 7

Norwegian



PLATE 14

The Painter's Places Maps of Hassam on App

Kathleen M. Burnside and Hal Weeks



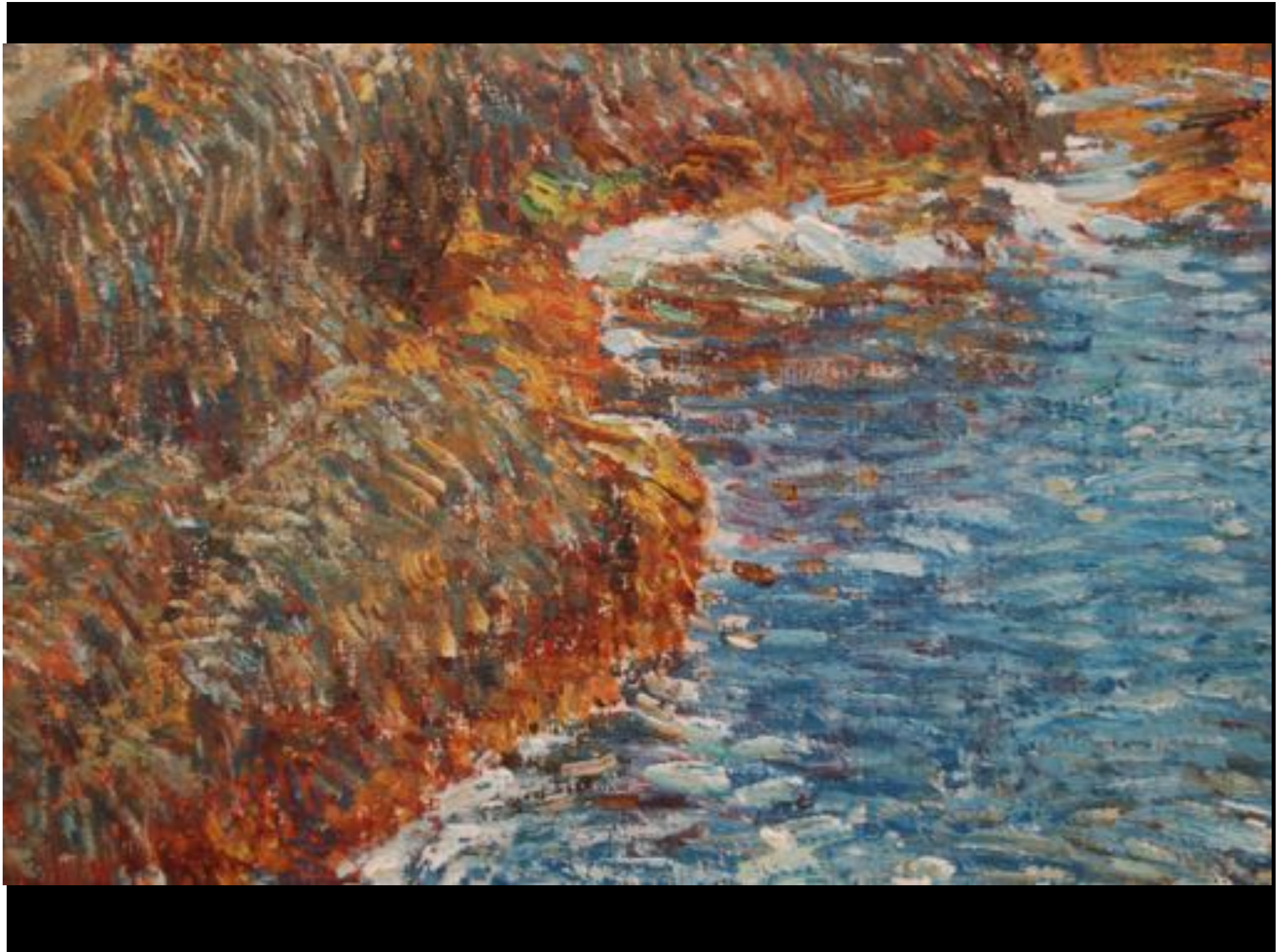
Isles of Shoals, 1907, oil on canvas, Promised gift (NCMA)
of Dr and Mrs James H. Goodnight



Isles of Shoals, 1907, oil on canvas, Promised gift (NCMA)
of Dr and Mrs James H. Goodnight







Headlands, 1908, oil on canvas, Harvard Art Museums/Fogg Museum



Diamond Cove, Isles of Shoals, 1908, oil on board,
Mildred Lane Kemper Art museum, Washington University, St Louis



John Singer Sargent (American, born Italy, 1856-1925).
Val d'Aosta (A Stream over Rocks; Stream in Val d'Aosta),
ca. 1907-1908, oil on canvas, Brooklyn Museum



The Breakfast Room, Winter Morning, 1911, oil on canvas, Worcester Art museum





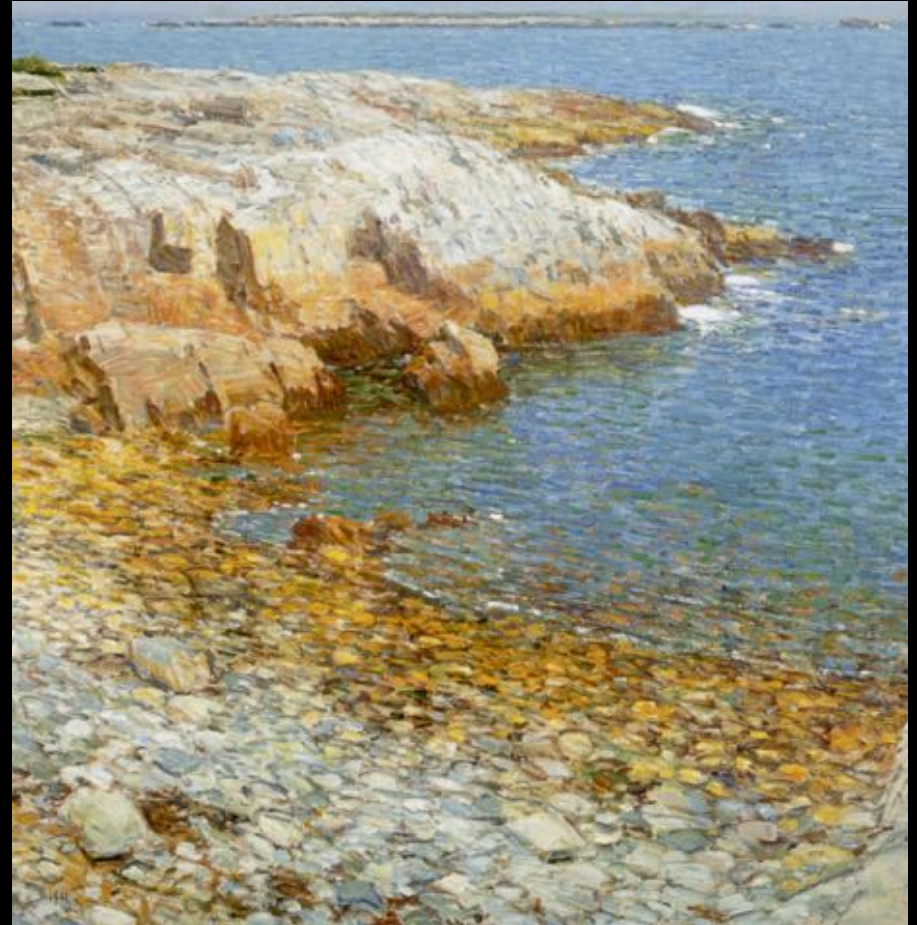
*Isles of Shoals, Broad Cove, 1912, oil on canvas,
Honolulu Academy of Arts*



Monet 1886



Hassam 1911



Jelly Fish, 1912, oil on canvas, Wichita Art museum



The South Gorge,
Appledore, Isles of Shoals,
1912, oil on canvas
Newark Museum



The Gorge, Appledore, 1912, watercolor on paper, Brooklyn Museum



The Cove, 1912, watercolor and gouache on wove
Whatman watercolor paper, Wichita Art museum



Armory Show, NYC 1913
Hassam, 5 paintings in Gallery F



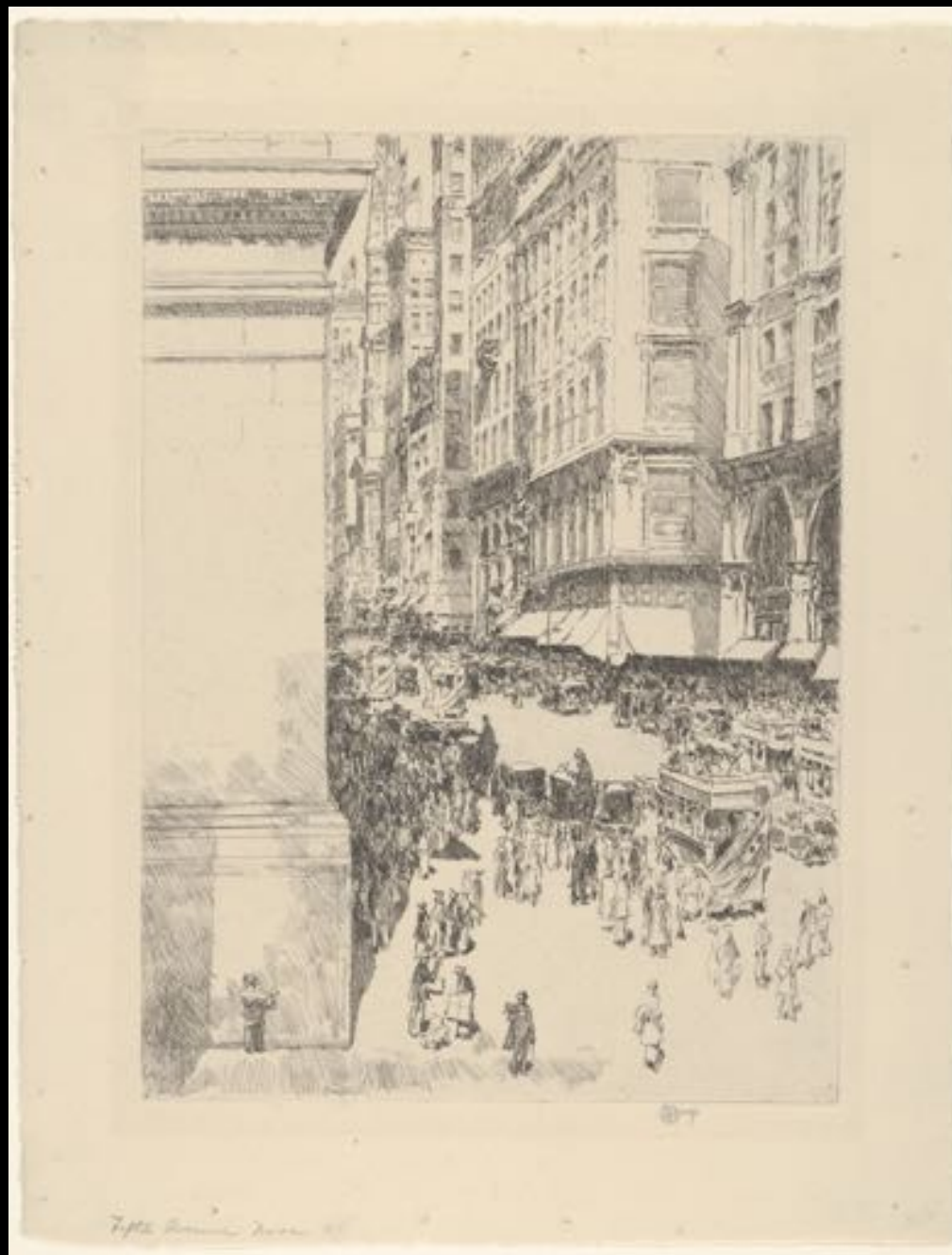
Isles of Shoals, 1915, oil on canvas, Portland Art Museum, Maine



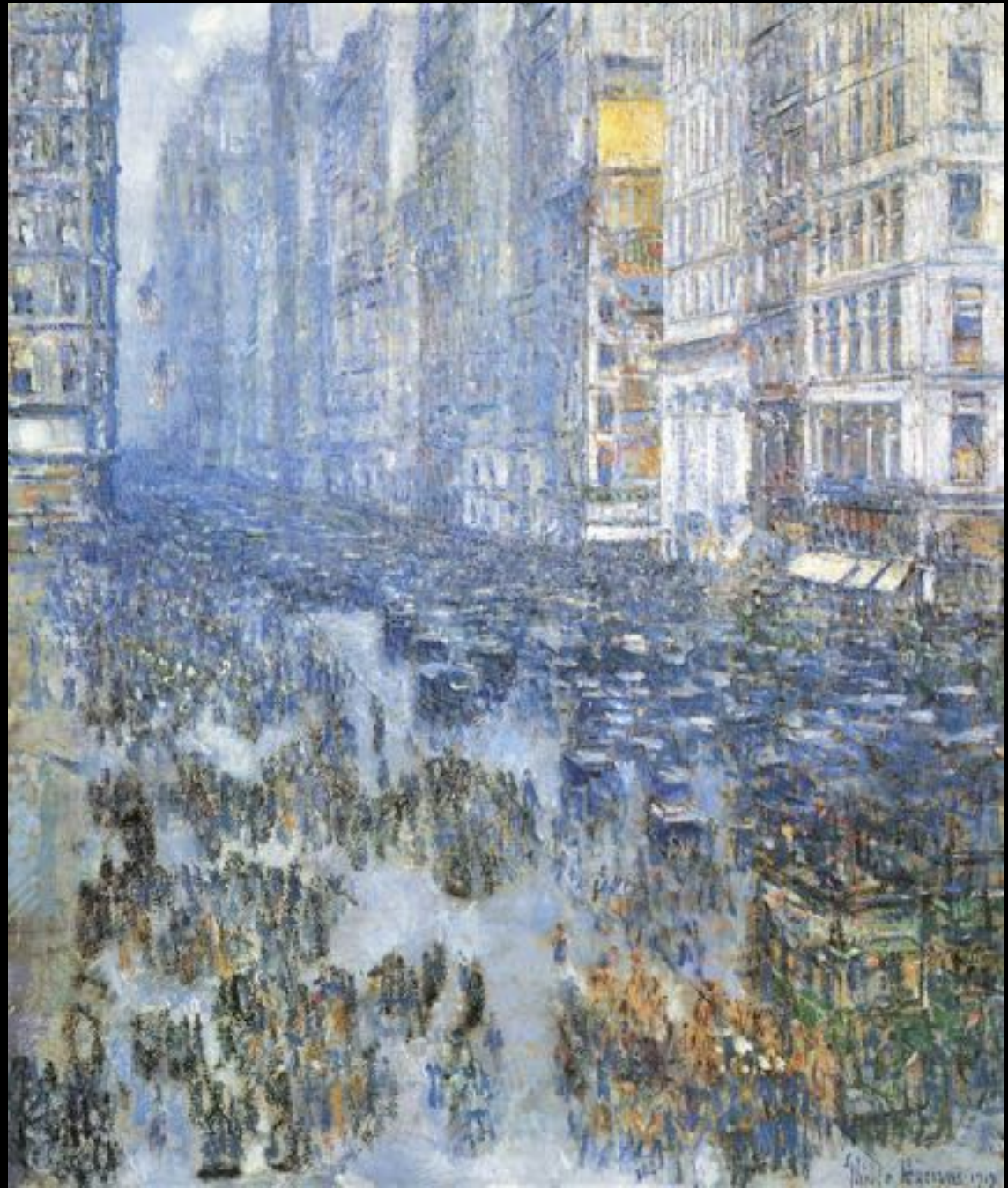
The White Kimono, 1915, etching and drypoint



Fifth Ave, Noon,
1916, etching



Fifth Avenue, 1919
oil on canvas
Cleveland Museum of Art



Flags on the Waldorf, 1916
oil on canvas
Amon Carter Museum
of American Art



Allies Day, May 1917
1917 oil on canvas
National Gallery DC



The Avenue in the Rain, oil on canvas,
1917, The White House





Oak and Old House in Spring, 1931, etching



W. G. ...

...

