



A GIBRALTAR INDUSTRIES COMPANY 

METAL LATH FOR STUCCO & PLASTER



TRANSFORMING MATERIALS

into products that make a better world

TABLE OF CONTENTS

Diamond Mesh LathPage 1

Flat Lath (Galvanized and Stainless Steel)
Self-Furred Lath — Dimpled
Self-Furred Lath — V Grooved

Tilath™ Paper Backed Metal Lath... Page 2

Flat and Self-Furred Tilath™
Tilath™ Starter Strips

Rib LathPage 3

1/8" Flat Rib Lath
3/8" High Rib Lath

Support Spacing for Metal LathPage 3

Spray Lath ProductsPage 4

Spray Rib Lath — Flat (1/8") Rib
Spray Rib Lath — High (3/8") Rib

Managing Quality Control.....Page 4

Metal Accessories.....Page 5

X-1 Corner Bead
X1-N Narrow Wing Corner Bead
X-2 Reinforced Corner Bead
Cornalath
Striplath

Metal Accessories.....Page 6

C-I Weep Trac™
X-66 Expanded Flange Casing Bead

Metal Accessories.....Page 7

N-66 Narrow Wing Casing Bead
J-Metal Bead
Foundation Weep Screed (FHA #7)

Metal Accessories.....Page 8

Control Joint (VV or M-Type, #15 Joint)
Griplock J Control Joint (#XJ15 Joint)
Zinc Control Joint

Metal Accessories.....Page 9

Inside Corner Control Joint (#30 Joint)
M-Slide™ 2-Piece Expansion Joints
2-Piece Expansion Joint (#40 Joint)

Installation Key Points.....Page 10

Installation Detail Photos.....Page 11

Specialty Metal ProductsPage 12

Wire Corners
Galvanized Hanger and Tie Wire

SS304 Stainless Steel Lath and AccessoriesPage 13

Manufacturing & Distribution CentersBack Cover

QUALITY PRODUCTS – AROUND THE GLOBE



A GIBALTAR INDUSTRIES COMPANY 

ALABAMA METAL INDUSTRIES CORPORATION

3245 Fayette Avenue • Birmingham, AL 35208

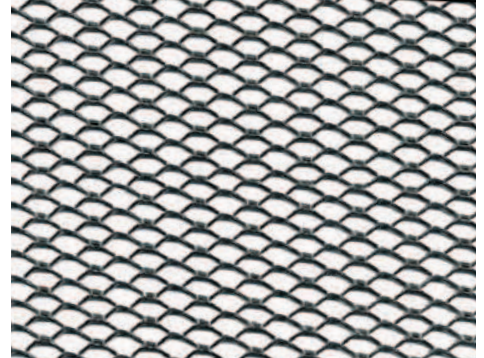
Phone (205) 787-2611 • (800) 366-2642 • Fax (205) 786-6527

www.amicoglobal.com

DIAMOND MESH LATH

Flat Lath is manufactured from prime quality steel sheets that are slit and expanded to form small diamond shaped openings. This large number of openings provides more plaster keys, providing better scratch coat bonding in either pumped or troweled applications. Each sheet has square ends and smooth parallel edges on sides for fast, easy handling and bending for curved surfaces. G60 galvanized finish to ASTM A653 and ASTM C847.

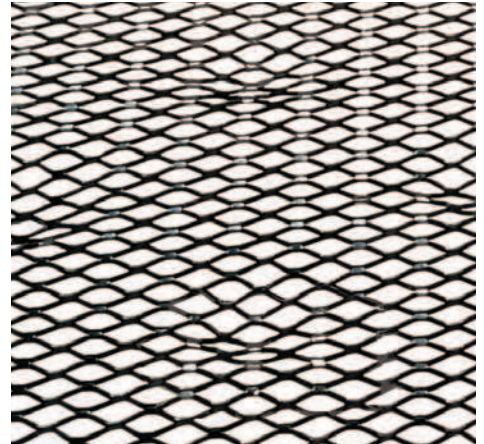
| Weight/ sq. yard | Finish | Sheet weight | Nominal sheet size | Sheets/ bundle | Bundles/ pallet | Pallet weight |
|---------------------|------------|-----------------|-----------------------|-------------------|--------------------|------------------|
| 2.5 lbs. | Galvanized | 5.0 lbs. | 27" x 97" | 10 | 50 | 2500 lbs. |
| 3.4 lbs. | Galvanized | 6.8 lbs. | 27" x 97" | 10 | 50 | 3400 lbs. |
| 2.5 lbs. | Stainless | 5.0 lbs. | 27" x 97" | 10 | 25 | 1275 lbs. |
| 3.4 lbs. | Stainless | 6.8 lbs. | 27" x 97" | 10 | 25 | 1700 lbs. |



Self-Furred Lath is used extensively in exterior stucco and stone work over sheathing and as a plaster base over masonry walls. Self-furring dimples or embossed "V" grooves hold the lath minimum ¼" away from solid surfaces to aid in the keying of stucco to the lath. **AMICO self-furred lath does not require additional self-furring mechanisms to function as required by ASTM C1063.**

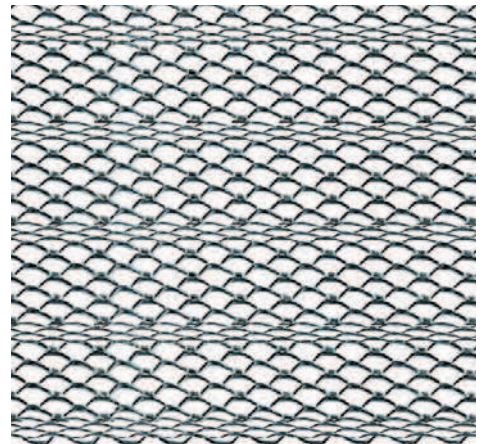
Dimpled (dimple spacing 5¼" on length with offset rows 5¼" apart on width)

| Weight/ sq. yard | Finish | Sheet weight | Sheet size | Sheets/ bundle | Bundles/ pallet | Pallet weight |
|---------------------|------------|-----------------|---------------|-------------------|--------------------|------------------|
| 2.5 lbs. | Galvanized | 5.0 lbs. | 27" x 97" | 10 | 25 | 1250 lbs. |
| 3.4 lbs. | Galvanized | 6.8 lbs. | 27" x 97" | 10 | 25 | 1700 lbs. |
| 2.5 lbs. | Stainless | 5.0 lbs. | 27" x 97" | 10 | 25 | 1250 lbs. |
| 3.4 lbs. | Stainless | 6.8 lbs. | 27" x 97" | 10 | 25 | 1700 lbs. |



V Grooved (embossed "V" grooves spaced 6" on center lengthwise)

| Weight/ sq. yard | Finish | Sheet weight | Sheet size | Sheets/ bundle | Bundles/ pallet* | Pallet weight |
|---------------------|------------|-----------------|---------------|-------------------|---------------------|------------------|
| 2.5 lbs. | Galvanized | 5.0 lbs. | 27" x 97" | 10 | 50 | 2500 lbs. |
| 3.4 lbs. | Galvanized | 6.8 lbs. | 27" x 97" | 10 | 50 | 3400 lbs. |



As per current revisions of ASTM C1063, metal lath applied to solid substrates must have ¼" self-furring properties, built into the lath sheet. Therefore, AMICO recommends the use of self-furred (SF) lath over solid substrates, as required by current codes. Self-furring lath is not required over framing members less than 1⅝" wide or over open framing.

TILATH™ PAPER BACKED METAL LATH

Tilath™ is AMICO lath with our factory-applied, weather-resistant barrier, Grade D, asphalt saturated paper (WRB). Tilath is attached in an “offset” fashion, providing for a ship lap installation, per ASTM C1063 (see the illustrations below). Tilath is an ideal selection for applications requiring two layers of WRB, where the synthetic air barrier provides the first barrier. Furthermore, Tilath is an ideal choice for veneer stone installations when the first WRB is already installed. Tilath is also an ideal choice for veneer stone installations.

Flat and Self-Furred Tilath™

| Weight/ sq. yard* | Finish | Sheet weight* | Sheet size | Sheets/ bundle | Bundles/ pallet | Pallet weight |
|----------------------|------------|------------------|---------------|-------------------|--------------------|------------------|
| 2.5 lbs. | Galvanized | 5.18 lbs. | 27" x 97" | 10 | 25 | 1295 lbs. |
| 3.4 lbs. | Galvanized | 6.81 lbs. | 27" x 97" | 10 | 25 | 1745 lbs. |

*Weight per sq. yard does NOT include the Grade D WRB; sheet weight DOES include the approximate weight of the paper.

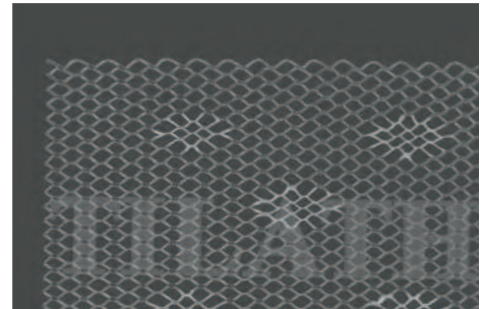
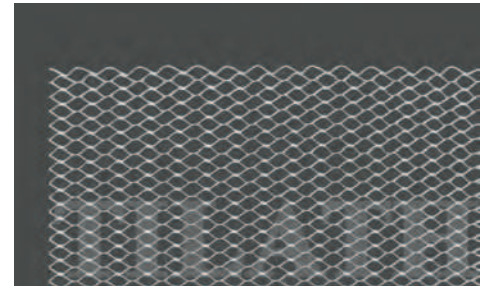
Tilath™ Starter Strip is a compatible Grade D asphalt paper to be used over the foundation weep screed when installing offset, paper backed lath. **Starter Strip** is printed with incremental 1" marks and larger marks at 12" and 16" to assist the installer in fastening to the wall framing. Because of its Weather Resistant Barrier (WRB) properties, it also provides protection around doors and windows, behind stucco accessories and anywhere WRB strips are needed.

Starter Strip exceeds minimum code requirements while providing optimal breathability to prevent the potential for moisture condensation within exterior walls. As important, it has the durability necessary to resist tearing and puncturing on the jobsite. When integrated into the building envelope as part of a complete Moisture Control System, it helps eliminate moisture-related problems—including water-related structural failures, mold and mildew.

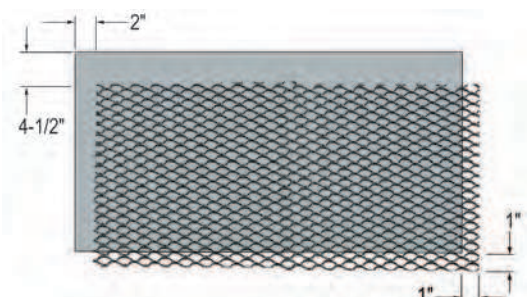
| Roll Size | Rolls/Carton | Carton Weight | Cartons/pallet |
|-----------|--------------|---------------|----------------|
| 6" x 225' | 6 | 30 lbs. | 30 |

Tilath™ Paper Backed Lath Construction Detail

Tilath™ has a WRB factory applied to lath sheets with a double offset, one side and end to allow the lath to overlap at sheet joints. Tilath is to be “shingled” up the wall, beginning with a 6" Tilath Starter Strip (Grade-D paper) at base of wall, placing the Starter Strip over the weep screed attachment flange. Then, the Tilath sheet is attached with metal overhang facing down so that the lap detail can be achieved (as shown at right).



**Lath
Attachment
Detail**

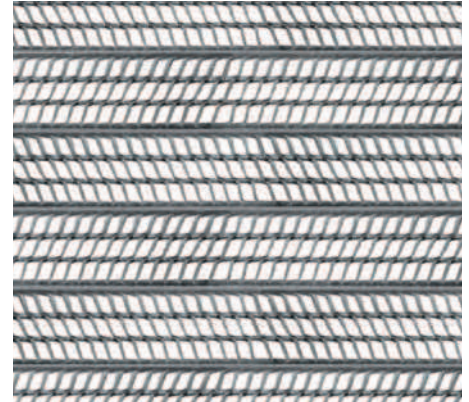


RIB LATH

Rib Lath with its unique solid metal ribs running the length of the lath is used for 3-coat stucco and thin veneer stone installations. Rib lath provides greater stiffness and strength to support heavier finishes. See **Support Spacing for Metal Lath** table below for lath and support spacing.

1/8" Flat Rib Lath has eighteen ribs, 1/8" high, spaced 1 1/2" on center for the installation of stone and tile on walls or plaster on ceilings.. The 2.75 lbs. product may be installed over horizontal spans up to 16" on center, when following ASTM C1063. This lath sheet still requires furring on solid substrates.

| Weight/ sq. yard | Finish | Sheet weight | Sheet size | Sheets/ bundle | Bundles/ pallet | Pallet weight |
|---------------------|------------|-----------------|---------------|-------------------|--------------------|------------------|
| 2.75 lbs. | Galvanized | 5.5 lbs. | 27" x 97" | 10 | 50 | 2750 lbs. |



3/8" High Rib Lath is designed with seven longitudinal ribs (each 3/8" high) and eight small flat ribs in between the high ribs. This product is used almost exclusively for ceiling and soffit applications. ASTM C1063 allows framing for High Rib Lath to span up to 24" on center. High Rib Lath is installed with nose of ribs touching framing members.

| Weight/ sq. yard | Finish | Sheet weight | Sheet size | Sheets/ bundle | Bundles/ pallet | Pallet weight |
|---------------------|------------|-----------------|---------------|-------------------|--------------------|------------------|
| 3.4 lbs. | Galvanized | 6.8 lbs. | 27" x 97" | 10 | 50 | 3400 lbs. |



SUPPORT SPACING FOR METAL LATH

(adapted from ASTM C1063, table 3)

| Types of Lath | Nominal Weight (per sq. yard) | VERTICAL SPACING (INCHES) | | | HORIZONTAL (INCHES) | |
|--------------------------------|----------------------------------|---------------------------|------------------------------------|---------------|---------------------|-------|
| | | Wood | Solid Plaster ¹ (Metal) | Other (Metal) | Wood or Concrete | Metal |
| Diamond Mesh Lath ² | 2.50 lbs. | 16 ³ | 16 ³ | 12 | 12 | 12 |
| | 3.40 lbs. | 16 ³ | 16 ³ | 16 | 16 | 16 |
| Flat Rib Lath | 2.75 lbs. | 16 | 16 | 16 | 16 | 16 |
| 3/8" Rib Lath | 3.40 lbs. | 24 | 24 | 24 | 24 | 24 |

¹ Where plywood is used for sheathing, a minimum of 1/8 in. (3.2 mm) separation shall be provided between adjoining sheets to allow for expansion.

² Metal plaster bases shall be furred away from vertical supports or solid surfaces at least 1/4 in. Self-furring lath meets furring requirements; furring of expanded metal lath is not required on supports having a bearing surface of 1-5/8 in. or less.

³ These spacings are based on unsheathed walls. Where self-furring lath is placed over sheathing or a solid surface, the permissible spacing of supports shall be no more than 24 in. (610 mm).

SPRAY LATH PRODUCTS

Spray Lath is a West Coast product, where stucco is spray applied to the surface of the lath to build up the stucco thickness. Kraft paper is factory applied to prevent over spray of stucco. The spaces between the strips of Kraft paper allow for the visual alignment of the sheet for mechanical attachment of the ribs to the substrate. Rib Lath is often attached directly to the vertical framing members without a solid board substrate included.

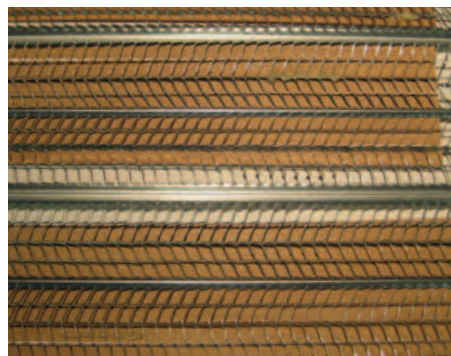
Spray Rib Lath - Flat (1/8") Rib has two (2) strips of kraft paper, 12" wide, attached to the lath. Flat Rib is allowed by Building Code to span 16" on center for the 2.75 lb. Flat Rib, 19" on center for 3.4 lb. Flat Rib.

| Weight/ sq. yard | Sheet size | Sheet weight | Sheets/ bundle | Bundles/ pallet | Pallet weight |
|---------------------|---------------|-----------------|-------------------|--------------------|------------------|
| 2.75 (1/8") lbs. | 27" x 97" | 5.5 lbs. | 10 | 50 | 2750 lbs. |
| 2.75 (1/8") lbs. | 27" x 48" | 2.75 lbs. | 10 | 50 | 1375 lbs. |



Spray Rib Lath - High (3/8") Rib is a more rigid lath product than Diamond Mesh, and like Spray Lath, has strips of kraft paper attached between the ribs. The additional rigidity is well suited for horizontal applications such as soffits. The 3.4 lb. High Rib allows for (up to) 24" spans.

| Weight/ sq. yard | Sheet size | Sheet weight | Sheets/ bundle | Bundles/ pallet | Pallet weight |
|---------------------|---------------|-----------------|-------------------|--------------------|------------------|
| 3.4 (3/8") lbs. | 27" x 97" | 6.8 lbs. | 10 | 50 | 3400 lbs. |

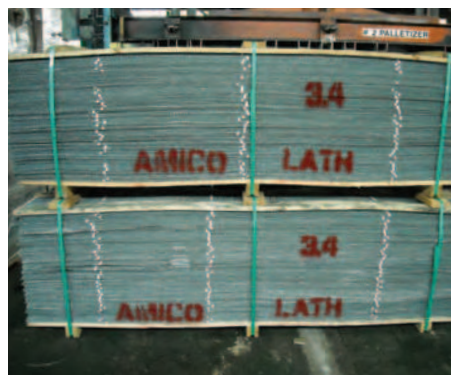


MANAGING QUALITY CONTROL

Metal lath may look the same when palletized. Before installation, check to see if it is the correct weight and if it is what was specified.

To be assured your lath is CODE COMPLIANT, AMICO straps all diamond mesh bundles with the appropriate identification, including weight, ASTM #, ICC-ESR# and Made in U.S.A. Furthermore the lath bundle's straps are color-coded (red strapping for 3.4#, blue for 2.5# and yellow for 1.75#) for your assurance.

When AMICO lath is delivered to the jobsite, you can be assured the lath is CODE COMPLIANT and meets specifications by observing color-coded strapping that complies with the project specifications. Each bundle is identified as seen below:



AMICO 3.4# sq.yd.per ASTM C-847, ICC-ESR-2247 Made in USA

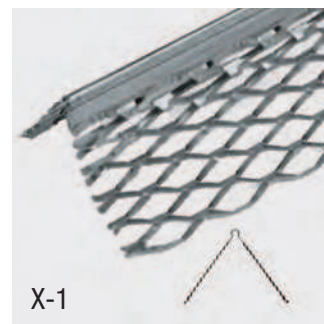
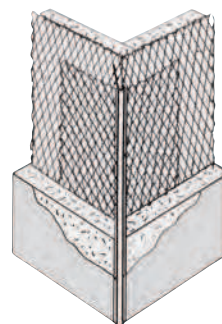
AMICO 2.5# sq.yd.per ASTM C-847, ICC-ESR-2247 Made in USA

METAL ACCESSORIES

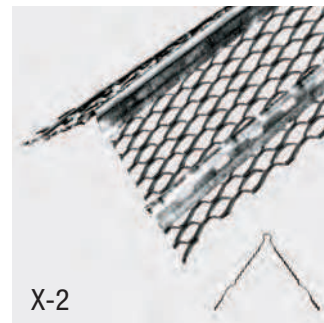
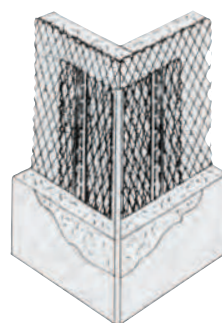
Corner Beads (X-1 and X-2) provide exterior corner protection and a straight ground for screeding. The **X-1 Corner Bead** has a 3" wide flange that is flexible and adaptable to various ground heights. The **X-1-N Narrow Wing Corner Bead** is the same design as X-1, but with a shorter, 2½" wide flange. The **X-2 Reinforced Corner Bead** is superior in strength to X-1, due to added stiffener strips in the 3¼" wide flanges.

| Style | Length | Finish | Pieces/ carton | Weight/ carton | Cartons/ pallet | Pallet weight |
|-------|-------------|------------|-------------------|-------------------|--------------------|------------------|
| X-1 | 10' | Galvanized | 30 | 56 lbs. | 21 | 1166 lbs. |
| X-1 | 10' | Zinc | 30 | 49 lbs. | 21 | 1008 lbs. |
| X-1 | 10' | Stainless | 30 | 56 lbs. | 21 | 1166 lbs. |
| X-1-N | 8' | Galvanized | 40 | 55 lbs. | 20 | 1095 lbs. |
| X-1-N | 8' | Zinc | 40 | 48 lbs. | 20 | 935 lbs. |
| X-2 | 10' | Galvanized | 30 | 76 lbs. | 21 | 1600 lbs. |
| X-2 | 10' | Zinc | 30 | 67 lbs. | 21 | 1407 lbs. |
| Wire | 8', 9', 10' | Galvanized | 40 | 44 lbs. | 24 | 1056 lbs. |

AMICO Wire Corners are discussed further on page 14 (Specialty Products)



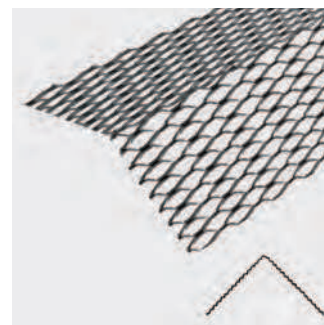
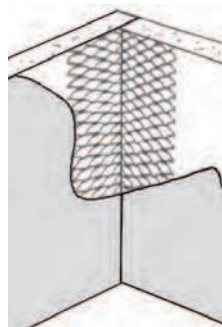
X-1



X-2

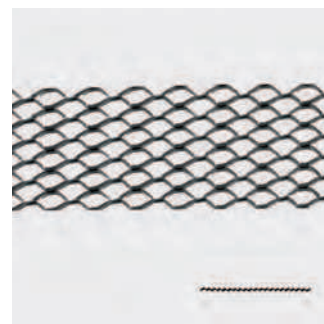
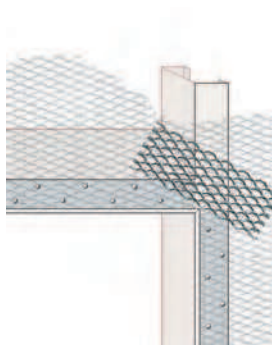
Cornalath is used to reinforce corners and help prevent cracks. The 105° angle offers resistance when placed to the inside of the corner over the lath. Available in galvanized steel only.

| Length | Pieces/ carton | Weight/ carton | Cartons/ pallet | Pallet weight |
|--------------|-------------------|-------------------|--------------------|------------------|
| 3" x 3" – 8' | 75 | 70.8 lbs. | 15 | 1062.0 lbs. |



Striplath is galvanized, diamond mesh lath, produced in 6" wide strips with smooth edges. Striplath is used to reinforce plaster at the corners of door and window openings to reduce cracks caused by stress.

| Length | Pieces/ carton | Weight/ carton | Cartons/ pallet | Pallet weight |
|---------|-------------------|-------------------|--------------------|------------------|
| 6" x 8' | 75 | 70.8 lbs. | 20 | 1416 lbs. |

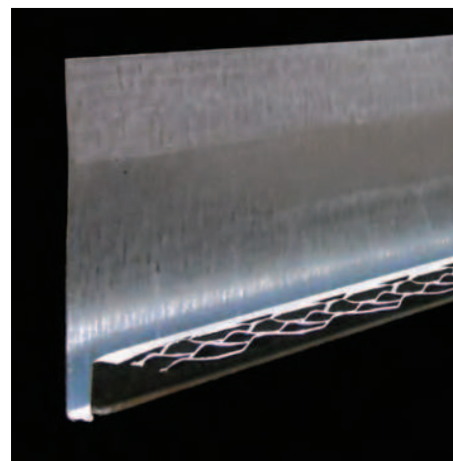


AMICO recommends the use of zinc or vinyl accessories for all exterior applications. Contact your AMICO representative for a vinyl catalog or visit our website.

METAL ACCESSORIES

C-I Weep Trac™ for Continuous Insulation applications is a new component that permits the application of stucco or thin veneer stone over rigid insulation that is attached to the outside of the building envelope when seeking to comply with the 2012 International Energy Conservation Code. AMICO's C-I Weep Trac System facilitates that short return of stucco back to the wall at doors, windows, and soffits. Additionally, the C-I Weep Trac is an effective foundation weep screed at the base of the wall, meeting International Building Code (IBC Chapter 25) requirements.

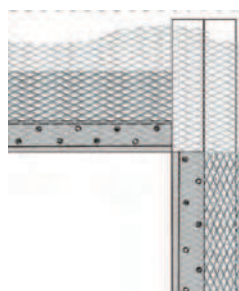
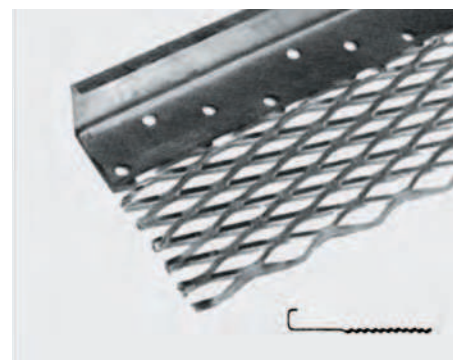
The 3½" nailing flange serves as a flashing when water-resistant, breathable building paper or paper-backed lath is installed over the flange. Available with holes in the "trough" to offer minor moisture weeping capabilities over window and door heads, bases of walls or other conditions that require drainage. Fire Testing: Pass, NFPA 285-Multi-Story flammability test. (Patent# D703,306S and D703,307S) The 3/4" ground will work with 5/8" hardcoat systems.



| Ground | Length | Nailing Flange Width | Finish | Box Count |
|--------|--------|----------------------|------------|-----------|
| 3/4" | 10' | 3-1/2" | Galvanized | 24 |

X-66 Expanded Flange Casing Bead has a 3" expanded mesh flange with a 1/4" return leg. This trim is used to terminate plaster or stucco around doors, windows or any other opening.

| Ground | Length | Pieces/carton | Finish | Weight/carton | Cartons/pallet | Pallet weight |
|--------|--------|---------------|---------------------------------|-------------------------------|----------------|------------------------------------|
| 3/8" | 10' | 30 | Galvanized | 44 lbs. | 20 | 880 lbs. |
| 1/2"* | 10' | 30 | Galvanized Zinc | 47 lbs. 44 lbs. | 20 | 940 lbs. 880 lbs. |
| 5/8" | 10' | 30 | Galvanized Zinc | 49 lbs. 47 lbs. | 20 | 980 lbs. 940 lbs. |
| 3/4" | 10' | 30 | Galvanized Zinc Stainless | 51 lbs. 49 lbs. 51 lbs. | 20 | 1020 lbs. 980 lbs. 1020 lbs. |
| 7/8" | 10' | 30 | Galvanized Zinc | 53 lbs. 51 lbs. | 20 | 1060 lbs. 1020 lbs. |
| 1" | 10' | 30 | Galvanized | 56 lbs. | 20 | 1120 lbs. |
| 1 1/4" | 10' | 30 | Galvanized | 59 lbs. | 20 | 1180 lbs. |
| 1 1/2" | 10' | 30 | Galvanized | 76 lbs. | 20 | 1520 lbs. |



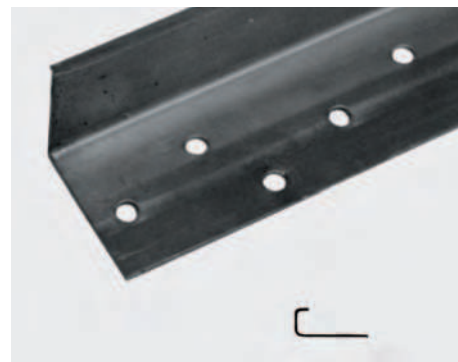
X-66, N-66 and J-Metal Beads can be supplied with punched holes in the ground. These beads should not be used in lieu of an FHA-approved weep screed at base of wall to be in compliance with ASTM C1063.

*Not a stock item. Call for lead time.

METAL ACCESSORIES

N-66 Narrow Wing Casing Bead is primarily a West Coast product with a profile similar to the X-66, but without the expanded flange. Nail and keying holes are provided in the flange, which is approximately 1-3/8" wide. Weep holes are optional.

| Ground | Length | Pieces/ carton | Finish | Weight/ carton | Cartons/ pallet | Pallet weight |
|--------|--------|-------------------|---------------------|--------------------|--------------------|------------------------|
| 3/8" | 10' | 30 | Galvanized Zinc* | 37 lbs. 35 lbs. | 30 | 1110 lbs. 1050 lbs. |
| 1/2" | 10' | 30 | Galvanized | 39 lbs. | 30 | 1170 lbs. |
| 3/4" | 10' | 30 | Galvanized | 44 lbs. | 30 | 1320 lbs. |
| 7/8" | 10' | 30 | Galvanized | 47 lbs. | 30 | 1410 lbs. |
| 1" | 10' | 30 | Zinc* | 45 lbs. | 30 | 1350 lbs. |



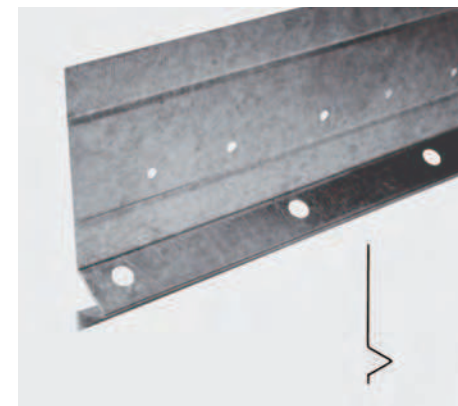
J-Metal Bead is used with one-coat stucco systems or thin veneer stone. Optional holes in ground are spaced at 6" centers.

| Ground A | Length | Pieces/ bundle | Nailing flange height B | Weight/ bundle | Bundles/ pallet |
|----------|--------|-------------------|----------------------------|--------------------|--------------------|
| 3/8" | 10' | 10 | 3 1/2" | 26 lbs. | 50 |
| 1/2" | 10' | 10 | 3 1/2" | 28 lbs. | 50 |
| 3/4" | 10' | 10 | 3 1/2" | 29 lbs. | 50 |
| 7/8" | 10' | 10 | 3 1/2" | 30 lbs. | 50 |
| 1 3/8" | 10' | 10 | 1 3/4" 3 1/2" | 21 lbs. 35 lbs. | 100 50 |
| 1 1/2" | 10' | 10 | 1 3/4" 3 1/2" | 24 lbs. 36 lbs. | 100 50 |



Foundation Weep Screed (FHA #7) is required at the base of walls as part of a drainage system for exterior stucco or veneer stone applications. The 3 1/2" nailing flange serves as flashing when Grade D building paper or Tilath™ Starter Strip is installed over the flange. Holes are punched into the nailing flange for easy attachment to the wall. Holes are also placed on top of the "V" portion of the flange to provide keying of the stucco mud when wet.

| Ground A | Pieces/ bundle | Nailing flange width | Finish | Weight/ bundle | Bundles/ pallet |
|----------|-------------------|-------------------------|-----------------------------------|-------------------------------|--------------------|
| 1/2" | 10 | 3 1/2" | Galvanized Zinc* | 32 lbs. 28 lbs. | 100 |
| 5/8" | 10 | 3 1/2" | Galvanized Zinc* | 34 lbs. 30 lbs. | 100 |
| 7/8" | 10 | 3 1/2" | Galvanized Zinc* Stainless* | 36 lbs. 32 lbs. 36 lbs. | 100 100 100 |
| 1 3/8" | 10 | 3 1/2" | Galvanized Zinc* | 41 lbs. 37 lbs. | 100 |
| 1 1/2" | 10 | 3 1/2" | Galvanized Zinc* | 43 lbs. 39 lbs. | 100 |



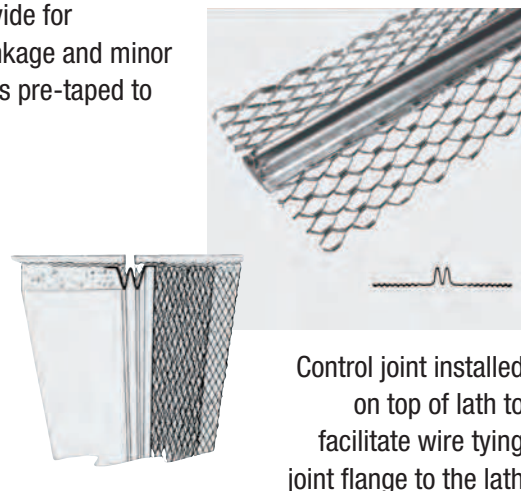
METAL ACCESSORIES

Control Joints versus Expansion Joints

Control Joints (CJ) are 1-piece joints designed to relieve stress and minimize cracking; they accommodate initial stucco shrinkage and minor thermal movement. The Control Joints are required to form membrane panels no larger than 100 sq.ft for ceilings and 144 sq. ft. for walls. **Expansion Joints (EJ)** are 2-piece joints designed to accommodate a full break through the structure across dissimilar surfaces or to deal with some minor structural movement.

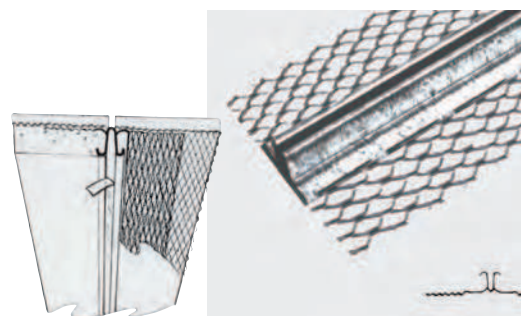
AMICO Control Joint (#15 Joint or M-Type) is designed to provide for movement to accommodate expansion and contraction caused by initial stucco shrinkage and minor thermal movement. Produced in galvanized steel and zinc alloy in 10' lengths. Comes pre-taped to ensure a clean joint.

| Ground | Pieces/ carton | Finish | Weight/ carton | Cartons/ pallet | Pallet weight |
|--------|-------------------|---------------------------------|-------------------------------|--------------------|-------------------------------------|
| 3/8" | 24 | Galvanized | 49 lbs. | 20 | 980 lbs. |
| 1/2" | 24 | Galvanized Zinc | 66 lbs. 50 lbs. | 20 20 | 1320 lbs. 1000 lbs. |
| 5/8" | 24 | Galvanized Zinc | 65 lbs. 58 lbs. | 20 20 | 1320 lbs. 1150 lbs. |
| 3/4" | 24 | Galvanized Zinc Stainless | 71 lbs. 61 lbs. 71 lbs. | 20 20 20 | 1420 lbs. 1220 lbs. 1420 lbs. |



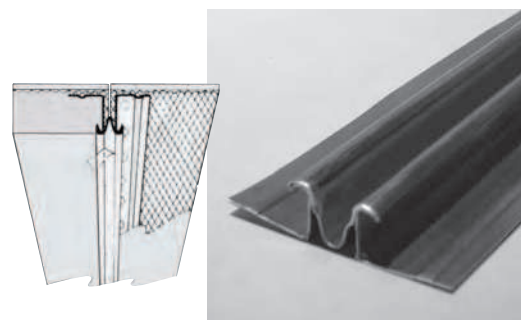
Griplock J Control Joint (#XJ15 Joint) is similar to the M Control Joint except the J design provides locking of the stucco to the edge of the joint. This design helps reduce stucco separation at the edge of the joint when stucco is forced under the J flange. Produced in 10' lengths. Griplock J comes pre-taped to ensure a clean joint.

| Ground | Pieces/ carton | Finish | Weight/ carton | Cartons/ pallet | Pallet weight |
|--------|-------------------|--------------------|--------------------|--------------------|------------------------|
| 1/2" | 24 | Galvanized Zinc | 70 lbs. 61 lbs. | 20 | 1400 lbs. 1220 lbs. |
| 3/4" | 24 | Galvanized Zinc | 77 lbs. 64 lbs. | 20 | 1540 lbs. 1280 lbs. |
| 7/8" | 24 | Galvanized Zinc | 80 lbs. 66 lbs. | 20 | 1600 lbs. 1320 lbs. |



Zinc Control Joint has a solid flange with large holes that aid in the attachment of adjoining metal lath. The improved shoulder design allows for easier stucco embedment and increases holding capacity at the joint to minimize cracking. CJ comes pre-taped to ensure a clean joint. Produced in 10' lengths.

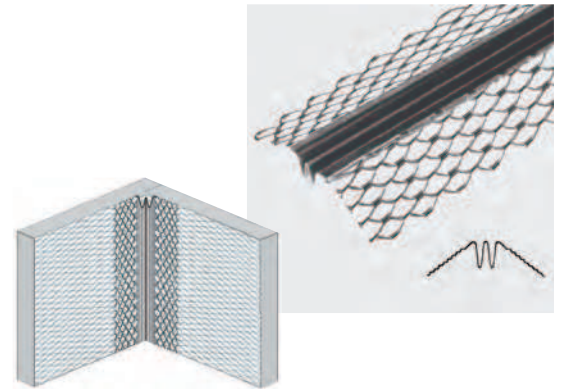
| Product # | Grounds | Pieces/ carton | Weight/ carton | Cartons/ pallet | Pallet weight |
|-----------|---------|-------------------|-------------------|--------------------|------------------|
| CJ380 | 3/8" | 25 | 51 lbs. | 20 | 1020 lbs. |
| CJ500 | 1/2" | 25 | 60 lbs. | 20 | 1200 lbs. |
| CJ750 | 3/4" | 25 | 66 lbs. | 20 | 1320 lbs. |



METAL ACCESSORIES

Inside Corner Control Joint (#30 Joint) is similar to the standard M-Type joint, but the flanges are bent to an angle to form inside corners, allowing movement. Produced in galvanized steel in 10' lengths. Verify availability and lead-time.

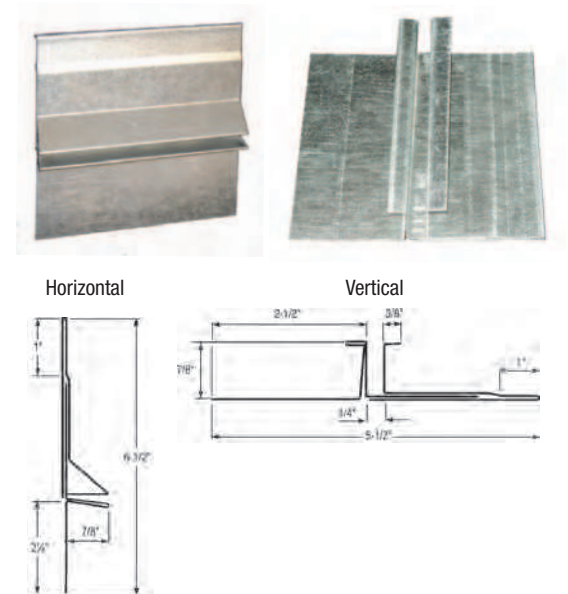
| Ground | Pieces/carton | Finish | Weight/carton | Cartons/pallet | Pallet weight |
|--------|---------------|------------|---------------|----------------|---------------|
| 1/2" | 24 | Galvanized | 66 lbs. | 20 | 1320 lbs. |



M-Slide™ 2-Piece Expansion Joints (Horizontal and Vertical)

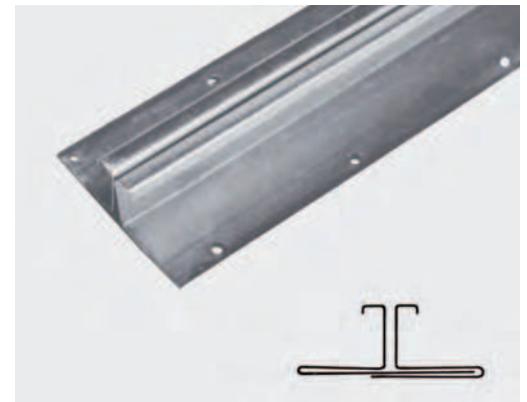
are water management accessories that work like the #40 Joint for movement, but improve the flashing and drainage from the area. **The M-Slide™ Horizontal** combines a weep screed design with a larger, solid flange (on bottom) to provide intermediate flashing/drainage at mid-floor expansion. **The M-Slide™ Vertical** utilizes larger flanges and a stiffer design to “pre-set” the vertical joint for proper attachment. Both versions are produced from G-90 pre-galvanized steel finish, providing additional protection. The 7/8" grounds will work for both 3/4" and 7/8" hard-coat systems. Produced in 10' lengths.

| Product # | Grounds | Pieces/carton | Weight/carton | Cartons/pallet | Pallet weight |
|-----------|---------|---------------|---------------|----------------|---------------|
| M-Slide-H | 7/8" | 10 | 110 lbs. | 12 | 1320 lbs. |
| M-Slide-V | 7/8" | 10 | 88 lbs. | 12 | 1056 lbs. |



2-Piece Expansion Joint (#40 Joint) is used to accommodate movement both horizontally and vertically caused by expansion and contraction in the structure. Installed at through wall expansion joints or where there is a transition from one type of construction to another such as with CMU to wood or metal framing. The opening in the joint is adjustable from 1/4" to 5/8". Produced in 10 ft. lengths, 15 pieces and 150 lineal feet per carton. Special order and requires additional lead time.

| Grounds | Galvanized Weight per 1000 Lin. Feet | Zinc Weight per 1000 Lin. Feet |
|---------|--------------------------------------|--------------------------------|
| 1/2" | 378 lbs. | 352 lbs. |
| 3/4" | 408 lbs. | 380 lbs. |
| 7/8" | 423 lbs. | 394 lbs. |



INSTALLATION KEY POINTS

These installation key points are based upon acceptable industry practice and ASTM C1063 Standard Specification for Installation of Metal Lath.

Always consult your area building official before beginning any project to familiarize yourself with any local code requirements. This guide should not replace the designs and judgments of a qualified engineer and or architect.

Lath Installation

Permanently attach foundation weep screed to the solid substrate at the bottom of wood or metal framed exterior walls as directed by code. Attach 6" wide Grade D Tilath™ Starter Strip over the weep screed to assure proper ship-lapping of the WRB. Install lath beginning at the bottom right hand corner of the wall. With paper backed lath leave the paper hanging over at the top and to the left of the sheet. The backing is offset on the lath allowing for a minimum 2" paper overlap on one end and one side. The paper is retracted on the opposite end and side. The long dimension of the sheets should always be installed perpendicular to the framing. As properly installed when ones hand is moved in a downward motion it is smooth and rough when moved upward. Lap lath minimum 1/2" at sides and 1" at ends with laps paper to paper and metal to metal. Apply the second sheet to the left of the first sheet lapping lath over lath and paper over paper allowing water to flow to the exterior. Place the third sheet centered above the first two sheets. This staggers the vertical butt joint seams and allows a more uniform dispersal of stress, a similar process to laying brick. Lath is to be furred away from vertical supports in excess of 1-5/8" wide or solid surfaces at least 1/4". AMICO Self-furring dimpled or V-Groove and high-rib lath meets these furring requirements. Finish materials are subject to a maximum span or spacing between framing members. In order to understand lath selection and framing, refer to the table on page 3 of this catalog (Support Spacing For Metal Lath) or Table 3 of ASTM C1063. Shears or metal cutting scissors can be used to notch and cut lath.

Rib Lath Installation – Due to increased possibilities of unacceptable cracking AMICO does not recommend rib lath on vertical surfaces. Rib lath is to be installed with the nose of the V-ribs in direct contact with framing members. Overlap sheets one rib and ends a minimum 1". End to end joints of rib lath to be wire tied at each rib.

Lath Fasteners

Wood Framing – Attach lath to vertical wood framing members with 1" roofing nails or 6d common nails bent over to engage not less than three strands of lath or 1" wire staples with 3/4" crown driven flush with the plaster base. All driven fasteners penetrate framing a minimum of 3/4". When lath is applied over sheathing fasteners shall penetrate the structural members not less than 3/4". Screws to attach lath to horizontal and vertical wood framing shall penetrate framing not less than 5/8" and shall engage not less than three strands of lath. Lath shall be attached to horizontal wood framing members with 1-1/2" roofing nails with a minimum 7/16" diameter head driven flush with the plaster base.

Metal Framing – Lath shall be attached to metal framing members with 0.0475" (18GA) wire ties, clips or by other means of attachment which afford carrying strength and resistance to corrosion equal to or superior to that of the wire. Screws shall penetrate a minimum of 3/8" through metal framing and shall engage not less than three strands of lath.

Concrete – Attach lath to masonry or concrete with power or powder actuated fasteners or hardened concrete stub nails. One fastener attached at each corner and one at the mid-point of the long dimension along the edge of the sheet. Install remaining fasteners in rows not more than 16" on center and vertically spaced rows not more than 7" on center. All fasteners shall be corrosion resistant, not less than 3/4" long, with head diameter not less than 3/8". With Insulated Concrete Forms (ICF) consult the manufacturer.

Rib Lath – 3/8" rib lath shall be attached to horizontal wood framing members with nails or staples with penetration into framing members not less than 1-3/4". Screws shall penetrate wood framing not less than 5/8" and metal framing not less than 3/8" and pass through, but not deforming the rib. Rib lath is attached at each rib along framing members. Rib lath attached to open-web steel joists by single ties of galvanized, annealed steel wire, not less than 0.0475" with the ends of each tie twisted together 1-1/2 times. Rib lath attached to concrete joists with loops of 0.080" galvanized, annealed steel wire, with the ends of each loop twisted together.

Fastener Spacing

Lath – Spacing of rows of nails, staples or screws corresponds to the framing spacing and rows spaced 7" on center vertically. Wire tie lath using 0.0475" (18-GA) wire 9" on center at edges, ends and at laps between framing members. On plywood sheathing only, lath may be nailed or stapled in lieu of tying at the same center 9" spacing. Attach accessories to remain properly aligned during application every 7" o/c with nails, staples or tie wire.

Accessory Fasteners

Accessories – Attach weep screed, corner and casing beads with nails, staples or tie wires along the framing member (horizontal or vertical). Wrap lath through external corners with corner bead then fasten true and plumb. Casing beads shall terminate finish around doors, windows or other openings. The nose of corner, casing and weep screed can be used as a screed for the stucco brown coat, but must be embedded by 1/8 inch thickness of plaster on the final coat. We recommend the use of zinc, vinyl or stainless steel accessories for all exterior applications. Galvanized fasteners are not to be used with stainless steel lath or accessories. All vinyl butt joints should be embedded in sealant and sealed after installation as required.

Expansion and Control Joints – It is difficult to anticipate or prevent plaster cracks; they can be largely controlled by means of 2-piece expansion joints. Expansion Joints permit some degree of movement in the stucco membrane caused by movement of the building or its components thus minimizes damage to the stucco and weather resistive barrier. 1-piece Control Joints shall be installed to minimize stress due to stucco curing and drying shrinkage and minor movement, along predetermined lines and as a screed to aid in stucco thickness control. Walls and ceilings that use lath for the plaster base should be divided into rectangular panels with control joints at least every 18-feet or at the juncture of a dissimilar wall, or in either direction in a length to width ratio of 2½ to 1, or in ceilings exceeding 100 sq. ft. or walls exceeding 144 feet in area. These joints should be installed so the lath is broken underneath the joint and wire tied to the lath to function properly. WRB shall be continuous beneath expansions and control joints.

INSTALLATION DETAILS

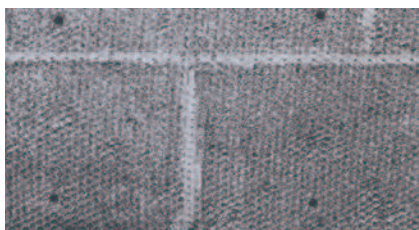
Attachment of Lath to studs

- 1) 7/16" wafer head screws are power driven to allow quick and easy attachment of Diamond Mesh Lath to framing members.
- 2) Diamond Mesh Lath can be cut to size with hand tools.



Attachment to solid surfaces

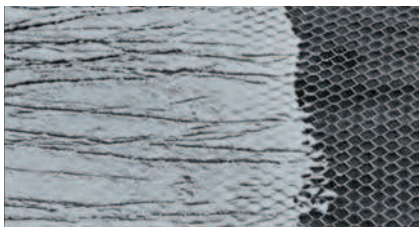
- 1) Self-Furred Diamond Mesh Lath is secured to masonry surfaces with corrosion-resistant, hardened concrete nails, power or powder driven fasteners and stub nails following guidelines per ASTM C1063. Paper backed lath is often used in this type of application as a bond breaker.



- 2) The scratch coat is applied with complete embedment of the self-furred lath in the plaster.

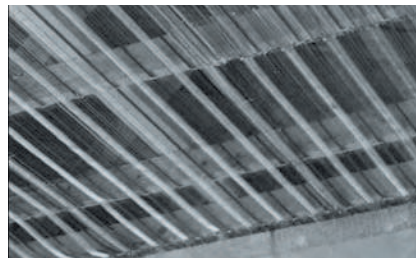


- 3) Scratch coat is fully embedded in the lath and is isolated from supporting structure. Water resistant backing paper allows controlled and uniform curing of this plaster foundation.



Attachment of Rib Lath to ceilings

- 1) 2.75# 1/8" Flat Rib Lath installed horizontally can span up to 16" o/c. 3.4# 3/8" High Rib Lath is attached with nose of rib in contact with the ceiling joist and spaced at 24" o/c max.

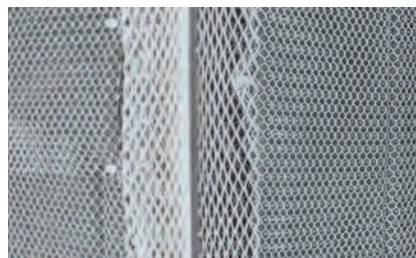


Attachment of trims/joints

- 1) Type "M" Control Joint is installed vertically over the window opening allowing for expansion and contraction.



- 2) AMICO X-1 Corner Bead provides protection for outside corners and a reliable straight ground for screeding.



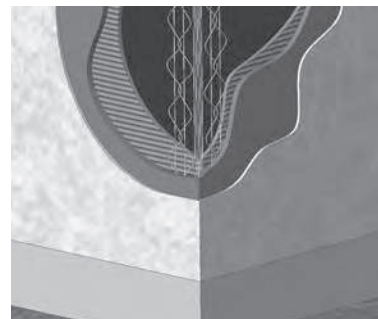
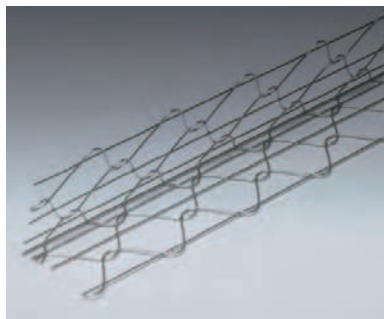
- 3) X-66 Expanded Casing Bead is typically installed at door and window openings as a plaster stop.



SPECIALTY METAL PRODUCTS

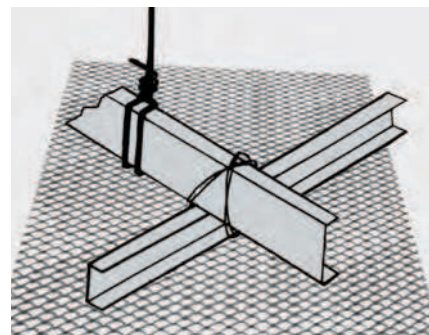
Wire Corners provide for rounder corners, embedding all reinforcement. They are manufactured and formed from zinc coated wire and packaged in standard 10' lengths. 8' and 9' lengths can be special ordered. Wire corners are packaged 40 pieces per carton with 24 cartons per pallet.

| Style | Flange size | Weight/carton |
|-------------------------------|-------------|---------------|
| Straight | 2.5" x 2.5" | 48.0 lbs |
| Straight BN (7/8") | 2.5" x 2.5" | 36.8 lbs |
| Straight 2-wire | 2.5" x 2.5" | 49.4 lbs |
| Arch | 2.5" x 2.5" | 34.0 lbs |
| Arch BN | 2.5" x 1.5" | 34.0 lbs |
| Bullnose | 2.5" x 2.5" | 48.0 lbs |
| Bullnose short | 2.5" x 1.5" | 40.0 lbs |
| Bullnose 2-wire | 2.5" x 2.5" | 49.4 lbs |
| Short Flange | 2.5" x 1.5" | 48.0 lbs |
| Short Flange BN (7/8") | 2.5" x 1.5" | 40.0 lbs |



Galvanized Hanger and Tie Wire are used to support CRC gridwork for stucco and acoustical or drywall ceilings. Hanger wire is produced in #8, #9 and #12 gauge galvanized soft annealed steel in 12' lengths. Tie wire is produced in #18 gauge galvanized soft annealed steel in 28" lengths.

| Product | Gauges | Length | Weight/package |
|-------------|----------|--------|----------------|
| Hanger Wire | 8, 9, 12 | 12' | 50 lb. hanks |
| Tie Wire | 18 | 28" | 25 lb. hanks |



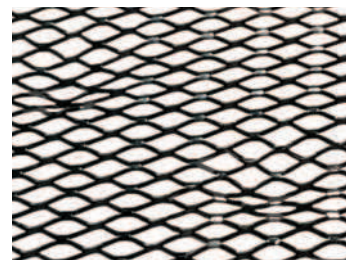
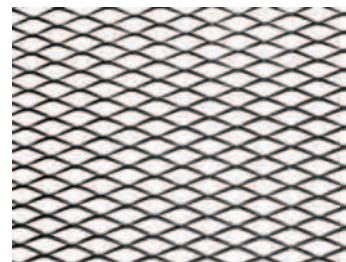
STAINLESS STEEL LATH & ACCESSORIES



Stainless Steel Type 304 provides excellent corrosion resistance for specialty lath applications. SS304 Lath can be used over sheathing boards to carry conventional stucco/stone finishes and for external insulation requirements. SS304 Lath is used in coastal environments, near water, fireproofing or where higher corrosion resistance is desired. **Produced both flat and self-furred (Dimpled).**

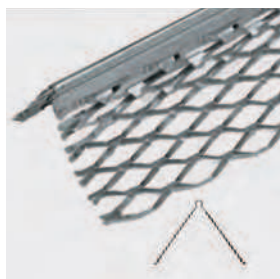
When stainless steel lath and stainless accessories are installed adjacent to galvanized lath or accessories the two dissimilar materials shall be separated by a non-metallic spacer.

| Weight/sq. yard | Alloy | Sheet weight | Nominal sheet size | Sheets/bundle |
|-----------------|-------|-------------------|--------------------|---------------|
| 2.5 lbs. | 304 | approx. 5.00 lbs. | 27" x 97" | 10 |
| 3.4 lbs. | 304 | approx. 6.80 lbs. | 27" x 97" | 10 |



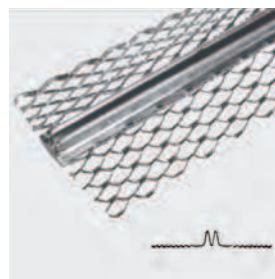
Stainless Steel Corner Bead

| Product | Ground | Length | Pieces/carton | Weight/carton |
|-------------|--------|--------|---------------|---------------|
| Corner Bead | | 10' | 30 | 56 lbs. |



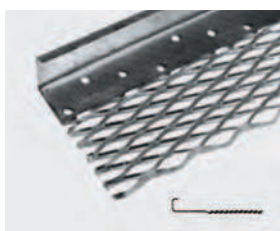
Stainless Steel Control Joint

| Product | Ground | Length | Pieces/carton | Weight/carton |
|---------------|--------|--------|---------------|---------------|
| Control Joint | 3/4" | 10' | 10 | 71 lbs. |



Stainless Steel Casing Bead

| Product | Ground | Length | Pieces/carton | Weight/carton |
|-------------|--------|--------|---------------|---------------|
| Casing Bead | 3/4" | 10' | 30 | 51 lbs. |

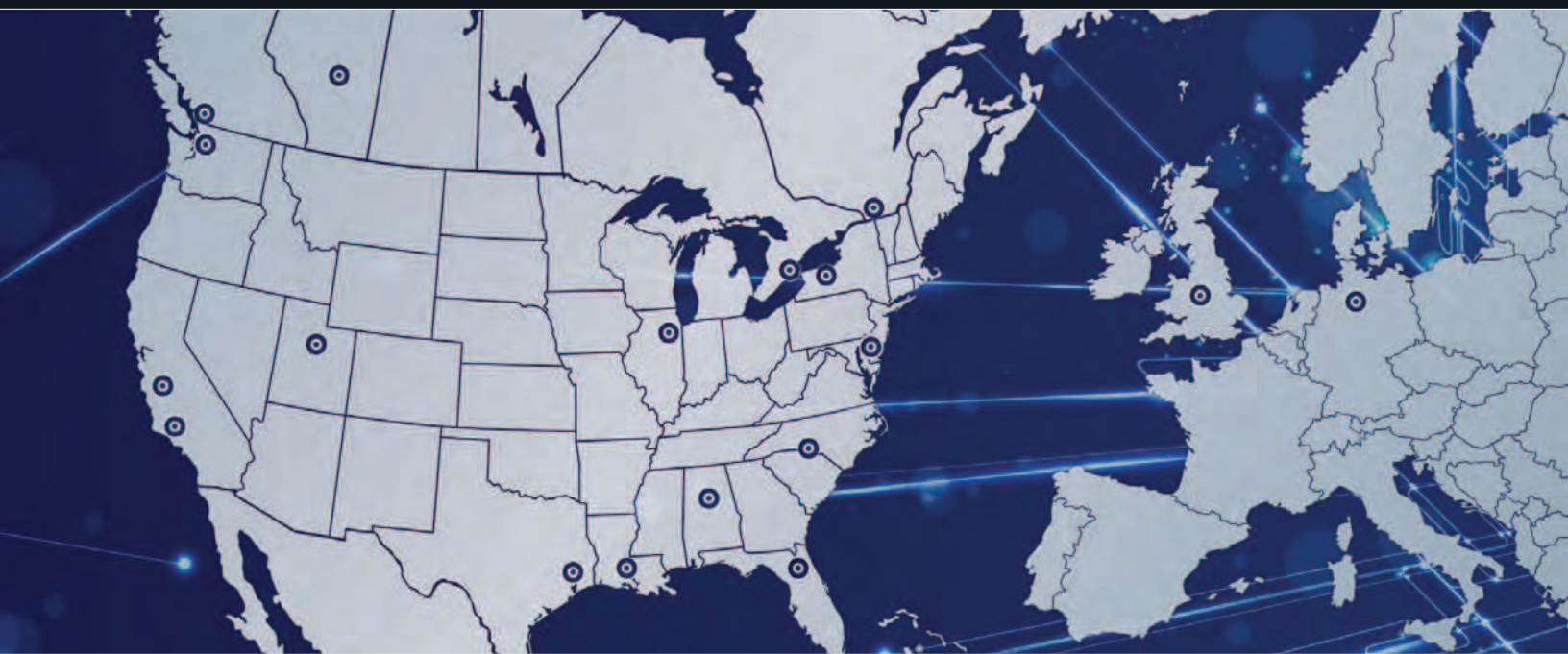


Stainless Steel Foundation Weep Screed

| Product | Ground | Length | Pieces/carton | Weight/carton |
|-------------|--------|--------|---------------|---------------|
| Weep Screed | 7/8" | 10' | 10 | 36 lbs. |



Call for availability and lead time for Stainless Steel lath and accessories.



AMICO locations

UNITED STATES

Birmingham, AL
800-366-2642

Bourbonnais, IL
800-238-0322

Dayton, TX
800-622-5765

Fontana, CA
800-962-0100

Houston, TX
800-433-9945

Lakeland, FL
800-487-2511

Orem, UT
800-645-0340

Seattle, WA
800-859-5363

Wilmington, DE
800-476-4430

CANADA

Burlington, ON
800-663-4474

Edmonton, AB
855-724-7283

Montreal, QC
800-463-3255

Vancouver, BC
800-665-4474

Seasafe
Lafayette, LA
800-326-8842

Diamond Perforated
Visalia, CA
800-642-4334

Erdle Perforated
Charlotte, NC
800-438-4467
Rochester, NY
800-627-4700

The Expanded Metal
Company, LTD

Hartlepool, England
+44 (0) 1429 867 388

SORST Streckmetall
Hannover, Germany
+49 (5 11) 67 67 56-0



Visit www.amicoglobal.com to view or download data sheets, request a catalog, request LEED information or receive technical assistance.



A GIBRALTAR INDUSTRIES COMPANY 