



Our Knowledge, Your Success.



# AMIRAN PRODUCTS CATALOGUE

(2019)

Old Airport North Rd. - Embakasi  
P.O. Box 30327 - 00100, Nrb, Kenya  
Tel: +254 (0) 719 095 000  
Email: [pr@amirankenya.com](mailto:pr@amirankenya.com)

**A member of the Balton Group of Companies**

 Join AmiranK on Facebook

 @amiran\_kenya



Call us on our toll free number  
**0800 720720**



Scan for our website

## AMIRAN KENYA LARGE SCALE AGRONOMISTS

REGION	SUB-UNITS	TARGET	AGRONOMIST
NAIVASHA	NAIVASHA	EXPORT FARMS	PAUL NDWIGA - AGRONOMIST 0725 032 357 0715 623 290 Email: paul.ndwiga@amirankenya.com
NORTH RIFT	ELDORET KITALE NAKURU	EXPORT FARMS	KARISA MAKINI - AGRONOMIST 0725 690 586 0701 633 296 Email: karisa.makini@amirankenya.com
MT. KENYA	TIMAU NANYUKI NYERI KARATINA	EXPORT FARMS	JOHN NGIGI - AGRONOMIST 0729 278 078 0720 701 656 Email: john.ngigi@amirankenya.com
NAIROBI METROPOLITAN	NAIROBI THIKA KIAMBU ATHI RIVER	EXPORT FARMS	JACK WEKESA - AGRONOMIST 0724 350 218 0701 633 307 Email: jack.wekesa@amirankenya.com
CENTRAL RIFT / MT. KENYA / NORTH RIFT	ELDORET KITALE	CEREALS	MARTIN VIDONYI - AGRONOMIST 0721 807 019 Email: martin.vidonyi@amirankenya.com
	NAROK MAU NAROK		BENARD ROTICH - AGRONOMIST 0728 708 606 Email: benard.rotich@amirankenya.com
AGRONOMY MANAGER EA - EXPORT FARMS			POLE MWADZOMBO 0737 590 146 0724 387 637 Email: mwadzombo@amirankenya.com
COMMERCIAL MANAGER - EXPORT FARMS			PRADEEP KUMAR 0701 292 740 Email: Pradeep.Kumar@amirankenya.com
COMMERCIAL MANAGER - EXPORT FARMS			IMRY GABAY 0758 728 901 imry@amirankenya.com
SALES MANAGER (HEAD OFFICE)			IRENE LIMO 0735 122 154 Email: irene.limo@amirankenya.com
TECHNICAL AND REGISTRATION			GRACE BOYANI 0729 682 129 Email: grace.boyani@amirankenya.com
TRIALS AGRONOMIST			DAVID MULANDI 0728 140 695 Email: david.mulandi@amirankenya.com
TECHNICAL SPECIALIST			TIMOTHY MUNYWOKI 0728 853 914 Email: timothy.munywoki@amirankenya.com
FIELD CROPS AGRONOMIST			JOSEPH NJOROGE 0720 222 041 Email: joseph.njoroge@amirankenya.com
POST HARVEST PHYSIOLOGISTS			STELLA IGNATIUS 0729 985 484 Email: stella.ignatius@amirankenya.com
POST HARVEST PHYSIOLOGISTS			ESTHER NJAU 0758 713 139 Email: esther.njau@amirankenya.com
HEAD OF AGRO DIVISION			RAN KADOSH 0701 568 990 Email: ran.kadosh@amirankenya.com
MANAGING DIRECTOR - AMIRAN KENYA			AVIV LEVI 0733 621 779 Email: aviv@amirankenya.com

# TABLE OF CONTENTS

## 4 | INTRODUCTION

## 5 | CROP PROTECTION PRODUCTS

## 8 | PLANT NUTRITION PRODUCTS

## 11 | FUNGICIDES

PG. 12 CONTROL OF DOWNY MILDEW  
CONTROL OF POWDERY MILDEW

PG. 13 CONTROL OF BOTRYTIS BLIGHT  
CONTROL OF LATE BLIGHT  
CONTROL OF LEAF RUST

PG. 14 CONTROL OF ALTERNARIA LEAF SPOTS  
CONTROL OF ANTHRACNOSE SPOTS  
CONTROL OF PHYTOPHTHORA & PYTHIUM ROOT ROT  
CONTROL OF FUSARIUM ROOT ROT  
CONTROL OF ASCOCHYTA SPOTS

PG. 15 CONTROL OF HELMINTHOSPORIUM SPOTS/BLIGHT  
CONTROL OF GENERALIZED LEAF SPOTS  
CONTROL OF RHIZOCTONIA ROOT ROT  
CONTROL OF SEPTORIA LEAF SPOTS  
SEED DRESSERS  
CONTROL OF AGROBACTERIUM & BACTERIAL SPOTS

PG. 16 NEW NOVEL FUNGICIDES

## 17 | INSECTICIDES

PG. 18 CONTROL OF SPIDER MITES  
CONTROL OF WHITE FLIES

PG. 19 CONTROL OF THRIPS  
CONTROL OF APHIDS

PG. 20 CONTROL OF LEAF MINER  
CONTROL OF FAW, DIAMOND BACK MOTH AND OTHER CATERPILLARS

PG. 21 CONTROL OF MEALY BUG  
CONTROL OF NEMATODES  
CONTROL OF TERMITES

PG. 22 NEW NOVEL INSECTICIDES

## 23 | HERBICIDES

PG. 24 WEED CONTROL PRODUCTS

PG. 25 NEW NOVEL HERBICIDES

## 26 | PLANT NUTRITION

PG. 27 BIOSTIMULANTS/SYNERGIZERS  
SPECIAL NUTRITIONAL PRODUCTS

PG. 28 MICRO ELEMENTS  
GREEN HOUSE GRADE FERTILIZERS (FOR DRIP IRRIGATION AND FOLIAR SPRAY)  
BIORATIONAL PRODUCTS

PG. 29 FIELD GRADE FERTILIZERS  
ADJUVANTS  
SOIL AMMENDMENT MATERIALS  
HORTICULTURAL DISINFECTANTS  
HORTICULTURAL ACIDS

## 30 | AMIRAN POST HARVEST

## 32 | AMIRAN BIO SOLUTIONS



INTRODUCTION



FUNGICIDES



INSECTICIDES



HERBICIDES



PLANT NUTRITION



AMIRAN BIO SOLUTIONS



AMIRAN POST HARVEST

## INTRODUCTION

Geared towards making farming a profitable and enjoyable experience, Amiran's Agro-Division Department is providing its farmers with field proven top quality agricultural inputs:

- Herbicides, Insecticides, Fungicides, Nematicides and Adjuvants - Help reduce farming risks through crop protection.
- A wide array of fertilizers and bio stimulants - Help in crop enhancement to ensure the crops grown reach their full potential.

Sourced from trusted world class leaders in the industry, Amiran's Agro-Division Products are based on Amiran's three pillars towards successful agribusiness projects; technologies, knowledge and high quality inputs and are packaged for both small and large scale growers.

With more than 50 years of working with farmers, over the years Amiran has grown from single line operations to a pioneer one stop shop allowing it the depth in terms of experience, knowledge, professional agronomists, tools and products in high tech irrigation systems, Amiran's seeds and greenhouse solutions.

Our vision is to further position our clients in the world markets as trustworthy and reliable suppliers with exceptional produce.

 Indicates Bio-Solutions





# CROP PROTECTION PRODUCTS

CHEMICAL	ACTIVE INGREDIENT	CHEMICAL GROUP	TARGET	RATE	WHO CLASS	RE-ENTRY	WHO-SIGNAL
AGIL 100 EC	<i>Propaquizafop 100g/L</i>	Aryxphenoxy-Propionate(FOPS)	Grasses in broadleaf crops	1lt/Ha	III	6	CAUTION
AGRIPHITE 600	<i>Dipotassium phosphite 61%</i>	Phosphonate	Downy mildew	3Lt/Ha	N/A	N/A	N/A
AGRIXYL 407 SL	<i>Mono &amp; dipotassium phosphite 400g/L + Metalaxyl 70g/L</i>	Phosphonate + Acylamine	Downy mildew	2.5Lt/Ha	II	12	HARMFUL
AMICOP 50 WP	<i>Copper oxychloride (50% metallic Copper)</i>	Inorganics	CBD, Leaf rust	2.5Kg/Ha	II	12	HARMFUL
AMIDIL 68 WG	<i>Metalaxyl-M 40g/Kg + Mancozeb 640g/Kg</i>	Acylamide + Dithiocarbamate	Downy mildew, Blights	2.5Kg/Ha	III	6	CAUTION
AMIMAX 720 WP	<i>Mancozeb 640g/kg + Cymoxanil 80g/kg</i>	Dithiocarbamate + Acylamines	Downy mildew, Blights	2Kg/Ha	III	6	CAUTION
AMISIL	<i>Polyether trisiloxane</i>	Organosilicone	Mites	0.5Lt/Ha	III	N/A	N/A
AMITIV 250 SC	<i>Azoxystrobin 250g/L</i>	Strobilurin	Downy mildew, Botrytis, Powdery mildew	0.5-0.75Lt/Ha	III	6	CAUTION
APOLLO 50 SC	<i>Clofentazine 500g/L</i>	Tetrazine	Mites	70ml/100Lt	IV	4	CAUTION
APRIL COMBI 38.3 EW	<i>Tebuconazole 250g/L + Spiroxamine 133g/L</i>	Triazoles + Amines	Powdery mildew, Leaf rust, Fusarium	0.4Lt/Ha	III	6	CAUTION
ARIANE	<i>Fluroxypyr 60g/L + Clopyralid 23.3g/L + MCPA – 266.7g/L</i>	Pyridine carboxylic acid	Broad leaved weeds in cereals.	1.5L/Ha	III	6	CAUTION
ARDENT 50 SC	<i>Kresoxim-methyl 500g/L</i>	Strobilurin	Powdery mildew, Rust	50ml/100Lt	II	12	HARMFUL
ASTER EXTRIM 20 SL	<i>Acetamiprid 150g/L + Cypermethrin 50g/L</i>	Neonicotinoid & Pyrethroid	Aphids, Whiteflies, Thrips	25-30ml/100Lt	II	12	HARMFUL
ATRAMET COMBI 50 SC	<i>Ametryn 250g/L + Atrazine 250g/L</i>	Triazines	Annual grasses and Broad leaf weeds (Sugarcane)	5-10L/Ha	III	6	CAUTION
AURORA TURBO 70 SG	<i>Carfentrazone-ethyl 3.3% + Mecoprop p 67%</i>	Aryl triazolinones	Broad Leaf Weeds in cereals	600g/Ha	III	6	CAUTION
AVID 1.8 EC	<i>Abamectin 18g/L</i>	Avermectin	Leafminers, Mites	50ml/100Lt	II	12	HARMFUL
AVIRMEC 1.8 EC	<i>Abamectin 18g/L</i>	Avermectin	Leafminers, Mites	50ml/100Lt	II	12	HARMFUL
BANJO 500 SC	<i>Fluazinam 500g/L</i>	Diarylamine	Botrytis	1 L/Ha	II	12	CAUTION
BELT 480 SC	<i>Flubendiamide 480g/L</i>	Phthalic acid diamides	DBM, Caterpillars	7.5-10ml/100Lt	III	6	CAUTION

## ALPHABETICAL LIST - CHEMICALS

CHEMICAL	ACTIVE INGREDIENT	CHEMICAL GROUP	TARGET	RATE	WHO CLASS	RE-ENTRY	WHO-SIGNAL
BIO T PLUS	<i>B.Thuringesis Kurstaki 36,000 IU</i>	Biological insecticide	Caterpillars, Thrips, African bollworms	50g/100Lt	IV	4	CAUTION
BIGO 400 SC	<i>Fluazinam 200g/L + Dimethomorph 200g/L</i>	Diarylamine + Carboxylic acid amide	Downey Mildew	0.75-1L/Ha	III	6	CAUTION
BOTANIGARD ES	<i>Beauveria basiana (GHA stain) 11.3% w/w</i>	Entomopathogenic Fungus	Insects(Sucking)	1-3L/Ha	IV	4	CAUTION
BREAKTHRU	<i>Polyether-polymethylsiloxane copolymer 1000g/L</i>	Organosilicone	Mites, Adjuvants	100-200ml/Ha	III	6	CAUTION
BUFFALO 100 OD	<i>Imidacloprid 75g/l+Betacyfluthrin 25g/L</i>	Neonicotinoids +Pyrethroids	Aphids, Whitefly, Thrips	400ml/Ha	II	12	HARMFUL
CALYPSO 480 SC	<i>Thiacloprid 480g/L</i>	Neonicotinoid	Aphids, Whiteflies,Thrips	300ml/Ha	II	12	HARMFUL
CHESS 50 WG	<i>Pymetrozine 500g/kg</i>	Pymetrozine	Aphids, Whiteflies, Mealy bugs	0.4Kg/Ha	III	6	CAUTION
CLODIGAN 240 EC	<i>Clodinafop-propargyl 240g/L</i>	Aryloxyphenoxy-propionate	Annual grasses (Wheat)	0.4-0.6l/Ha	III	6	CAUTION
CLOSER 240 SC	<i>Sulfoxaflor 240g/L</i>	Sulfoximines	Aphids, Whiteflies, Mealy bugs	120ml/1000L	IV	4	CAUTION
CROP GUARD	<i>Furfural 800g/L</i>	Furan	Nematodes	15-20L/Ha	II	12	HARMFUL
CUTTER 112 EC	<i>Acetamiprid 64g/L+ Emamectin Benzoate 48g/L</i>	Neonicotinoid+Avermectin/ Milbectine	Caterpillars(FAW, Tuta, Bollworms), Thrips and Spidermites.	0.25L/Ha	II		HARMFUL
CYFLAMID 5 EW	<i>Cyflufenamid 50g/L</i>	Phenyl-acetamid	Powdery Mildew	0.5Lt/Ha	III	6	CAUTION
CYRUX 10 EC	<i>Alpha Cypermethrin 100g/L</i>	Pyrethroid	Aphids, Leafminers, Thrips, Whiteflies	250ml/Ha	II	12	HARMFUL
DEBAR 450 SL	<i>Glyphosate 450g/L</i>	EPSP synthase inhibitors	Non- Selective	1.5 – 2L/Ha	III	6	CAUTION
DIFFERENCE 250 EC	<i>Difenoconazole 250g/L</i>	Triazole	Fungal-Several	0.5-0.75L/Ha	II	12	HARMFUL
DISARM 480 SC	<i>Fluoxastrobin 480g/Kg</i>	Dihydro-dioxazines	Powdery Mildew	300ml/Ha	IV	4	CAUTION
DIUREX 80 WP	<i>Diuron 80%</i>	Urea	Weeds (Sugarcane)	2.5-3.0Lt/Ha	II	12	HARMFUL
DIVIPAN 100 EC	<i>Dichlorvos 100g/L</i>	Organophosphate	Insects-Several	1.5Lt/Ha	I	48	DANGER
DOMARK 40 EW	<i>Tetraconazole 400g/L</i>	Triazole	Powdery Mildew	0.6Lt/Ha	II	12	HARMFUL
EMTHANE M-45 WP	<i>Mancozeb 800g/kg</i>	Dithiocarbamate	Fungal-Several	2.5Kg/Ha	III	6	CAUTION
FENOMEN 400 EC	<i>Fenamiphos 400g/L</i>	Organophosphate	Nematodes	20-24Lt/Ha	I	48	DANGER
FOLPAN 50 SC	<i>Folpet 500g/L</i>	Phthalimides	Fungal-Several	2.0Lt/Ha	III	6	CAUTION
FOSTONIC 80 WP	<i>Fosetyl Aluminium(Al) 833.3g/kg</i>	Organophosphorous	Downy mildew	1.5-3.0Kg/Ha	III	6	CAUTION
FUNGURAN - OH 50 WP	<i>Copper hydroxide 50%</i>	Inorganics	Fungal-Several	2.5Kg/Ha	II	12	HARMFUL
GALIGAN 240 EC	<i>Oxyfluorfen 240g/L</i>	Diphenyl esterv	Broad leaved and grass weeds	1Lt/Ha	III	6	CAUTION
GALIL 300 SC	<i>Imidachloprid 250g/L + Bifethrin 50g/L</i>	Neonicotinoid + Pyrethroid	Aphids, Thrips, Whiteflies	250ml/Ha	II	12	HARMFUL
GOLAN 20 SP	<i>Acetamiprid 200g/L</i>	Neonicotinoid	Insects-Several	20-25g/100Lt	II	12	HARMFUL
GOLDAZIM 500 SC	<i>Carbendazim 500g/L</i>	Benzimidazole	Fungal-Several	100ml/100Lt	III	6	CAUTION
HOTSHOOT 70 WDG	<i>Imidacloprid 700g/Kg</i>	Neonicotinoids	Aphids, Whiteflies and Thrips	100 – 200g/ha	II	12	HARMFUL
IMPULSE 500 EC	<i>Spiroxamine 500g/L</i>	Spiroketalamine	Powdery Mildew,Rust	75-100ml/100Lt	II	12	HARMFUL
INDOX	<i>Indoxacarb 150g/L</i>	Indoxacarb	Fall Army Worms, Caterpillar	250ml/Ha	II	12	HARMFUL
INFINITO 687.5 SC	<i>Fluopicolide 65.2g/L + Propamocarb hydrochloride 625g/L</i>	Acylicolides	Downy Mildew/Late blight	1.2-1.5Lt/Ha	III	6	CAUTION
IPPON 500 SC	<i>Iprodione 500g/L</i>	Dicarboxamide	Botrytis	100ml/100Lt	III	6	CAUTION
KALIF 480 EC	<i>Clomazone 480g/L</i>	Isoxazolidinone	Broad leaved and grass weeds	1Lt/Ha	II	12	HARMFUL
KANEMITE 15 SC	<i>Acequinocyl 150g/L</i>	Napthoquinone	Mites	40ml/100lts	II	12	HARMFUL
KIBOKO SUPER 7.5 EW	<i>Fenoxaprop-p-ethyl 75g/L</i>	Aryloxyphenoxy-propionate (FOPS)	Grass Weeds(Wheat/ Barley)	0.8-1.0lt/Ha	II	12	HARMFUL
KOBE 1.2 SL	<i>Chrysophanol parietien 1.2%</i>	Bio Fungicide	Fungal-Several	1-1.5Lt/Ha	IV	4	CAUTION
KOHINOR 200 SL	<i>Imidacloprid 200g/L</i>	Neonicotinoid	Insects	0.5lt/Ha	III	6	WARNING
LAMBDEX 5 EC	<i>Lambdacyhalothrin 50g/L</i>	Pyrethroid	Insects	35ml/100lts	II	12	HARMFUL
LEVO 2.4 SL	<i>Prosuler Oxymatrine 2.5%</i>	Biological Insecticide	Thrips, Mites, Caterpillars,Insects	30ml/100lts	U	4	CAUTION
LINAGAN 50 WP	<i>Linuron 500g/kg</i>	Ureas	Broad leaved and grass weeds	1.5-2.0Kg/Ha	IV	4	CAUTION
MAXIMUS 537.5 SE	<i>Terbutylazine 125 g/L+Mesotrione 37.5 g/L+Metolachlor 375 g/L</i>	Cloroacetamide + Triazine + Triketone	Broad leaved and grass weeds	2-3L/Ha	II	12	HARMFUL
MELODY DUO 69WG	<i>Propineb 600g/kg + Iprovalicarb 90g/kg</i>	Valinamide carbamates	Blight, Downy Mildew	2.0-2.5Kg/Ha	III	6	CAUTION

## ALPHABETICAL LIST - CHEMICALS

CHEMICAL	ACTIVE INGREDIENT	CHEMICAL GROUP	TARGET	RATE	WHO CLASS	RE-ENTRY	WHO-SIGNAL
MERCUR 500 SC	Diathionon 500g/L	Sulfoarbaide	Mites/insects	60-80ml/100L	III	6	CAUTION
MERPAN 83 WP	Captan 83%	Phthalimides	Fungal-Several	150g/100ts	IV	4	CAUTION
 METACOP 450 WP	Metalaxyl 50g/L+ Copper Oxychloride 400g/Kg	Acylamide+Inorganics	CBD, Downy Mildew, Late Blight, Rust	2 – 2.5 kg/Ha	II		HARMFUL
MORTEL 5 SC	Fipronil 50g/L	Phenylpyrazole	Thrips, termites	0.5L/Ha	II	12	HARMFUL
 NEEMRAJ SUPER- 3000	Azadiractin 0.3%	Azadiractin	Insects, Nematodes	1-3lt/Ha	IV	4	CAUTION
NIMROD 25 EC	Bupirimate 250g/L	Pyrimidine	Powdery Mildew	250ml/100ts	III	6	CAUTION
NISSORUN 10 EC	Hexythiazox 100g/L	Thiazolidines	Mites	50ml/100ts	III	6	CAUTION
NEMATHORIN 150 EC	Fosthiazate 150g/L	Organophosphate	Nematodes	10-15L/Ha	II	12	HARMFUL
NORDOX SUPER 75 WP	Cuprous oxide (equivalent to 75% metallic copper)	Inorganics	CBD Leaf Rust	3.8kg/Ha 2.4kg/Ha	III	6	CAUTION
ODEON 82.5 WDG	Chlorothalonil 825g/Kg	Chloronitriles- Pthalonitriles	Fungal-Several	120-150g/100ts	III	6	CAUTION
ORIU 25 EW	Tebuconazole 250g/L	Triazole	Rust	0.5-0.75lt/Ha	II	12	HARMFUL
OTHELLO 25 WDG	Azoxystrobin 250g/Kg	Strobilurins	Rust, Botrytis, Downey mildew, Powdery Mildew	0.5kg/Ha	III	6	CAUTION
 PACYLOS 18 WP	Paecilomyces fumosoroseus strain FE9901	Biological Insecticide	Whiteflies, Aphids and Thrips	1-2Kg/Ha	IV	4	CAUTION
PALLAS 45 OD	Pyroxulam 45g/L	Triazolopyrimidine sulfonamide	Broad leaves and grass weeds (wheat)	0.5L/Ha	III	6	CAUTION
PANGA 480 SL	Glyphosate 360g/L	EPSP synthase inhibitors	Non-selective	3L/Ha	III	6	CAUTION
PARIMAZE 10 SL	Imazethapyr 100g/L	Imidazolinone	Broad leaves and grass weeds	1L/Ha	II	12	HARMFUL
POLAR 50 WG	Polyoxin AI (complex 50%)	Peptidyl pyrimidine nucleoside	Powdery Mildew, Botrytis	50g/100ts 25g/100ts	IV	4	CAUTION
PREV AM	Sodium Tetraborohydrate Decahydrate 0.99 w/v	Citrus Oil Derivative	Powdery mildew	2ml/L	III	6	CAUTION
PROPLANT 722 SL	Propamocarb hydrochloride 722g/L	Carbamate	Downy Mildew	150-300ml/100ts	IV	4	CAUTION
PROVE 1.92 EC	Emamectin Benzoate 19.2g/L	Avermectin/Milbectine	Caterpillars,Thrips	40-50ml/100ts	II	12	HARMFUL
PYRINEX 48 EC	Chlorpyrifos 480g/L	Organophosphate	Insects	150ml/100ts	II	12	HARMFUL
PYRINEX QUICK 256 ZC	Chlorpyrifos 250g/L + Deltamethrin 6g/L	Organophosphate + Pyrethroid	Insects	1.25L/Ha	II	12	HARMFUL
PYRUS 400 SC	Pyrimethanil 404g/L	Pyrimidines	Botrytis	100-120ml/100ts	IV	4	CAUTION
RADIANT 120 SC	Spinetoram 120g/L	Spinosyns	Caterpillars, Thrips	200-250ml/L	IV	4	CAUTION
 RAPID 120 SC	Acetamiprid 100 gr/l + Emamectin-benzoate 20 gr/l	Neonicotinoid+Avermectin/Milbectine	Caterpillars(FAW, Tuta, Bollworms),	0.25 – 0.4 L/Ha	III		CAUTION
RIMON 10 EC	Novaluron 100g/L	IGR	DBM	50-75ml/100ts	III	6	CAUTION
RIMON SUPRA 10 SC	Novaluron 100g/L	IGR	Caterpillars	50-75ml/100ts	III	6	CAUTION
RIZOLEX 50WP	Tolclofos Methyl 50g/kg	Aromatic hydrocarbons	Rhizoctonia	5 - 10Kg/Ha	III	6	CAUTION
ROOTCAP 10 GR	Ethoprophos 100g/Kg	Organophosphate	Nematodes	80Kg/Ha	II	12	HARMFUL
ROUND UP 360 K	Glyphosate 360g/L (441g/L potassium salt)	EPSP Synthase Inhibitors	Non-Selective	2 - 3L/Ha	IV	4	CAUTION
 SAF-T-SIDE 800 EC	Paraffinic oil 80%	Oil	Spider mites, Thrips Whiteflies, Mealy bugs	4.0lt/Ha	IV	4	CAUTION
SHAR COMBI 280SC	Azoxystrobin 200g/L + Cyproconazole 80g/L	Strobilurin + Triazole	Rust, Septoria	0.75L/Ha	III	6	CAUTION
SEED PLUS 30 WS	10% Carbendazim, 10% Imidacloprid, 10% Metalaxyl	Benzimidazole, Neonicotinoid,Acylamine	Seed Dressing	2.5Kg/Ton/100ts	II	12	HARMFUL
SEED POWER 250 FS	Imidacloprid 200g/L+ Difenconazole 50g/L	Neonicotinoids + Triazoles	Seed Dressing	Maize – 3L/Ton/ 4 litres of water Wheat – 2L/Ton/ 4 litres of water	II		HARMFUL
SIGMA COMBI 500 SC	Acetochlor 250g/L+Atrazine 250g/L	Triazines	Broad Leaf, Grass Weeds	3lt/Ha	II	12	HARMFUL
SINE 4D 720 SL	Sine 2,4-D Amine 720g/L	Phenoxy Amines	Broad Leaf	1-3lt/Ha	II	12	HARMFUL
SOPRANO 250 SC	Epoxiconazole 125g/+ Carbendazim 125g/l	Triazole+Benzimidazole	Rust, Septoria	0.8lt/Ha	III	6	CAUTION
SPHINX EXTRA 713 WDG	Folpet 600g/kg + Dimethomorph 113g/kg	Carboxylic acid amide + Phthalimides	Downey Mildew, Blight	2.0-2.5kg/Ha	III	6	CAUTION
SULFOLAC 80 WG	Sulphur 800g/Kg	Inorganics	Powdery Mildew	3Kg/Ha	III	6	CAUTION
TEPPEKI 50 WG	Fonicamid 500g/kg	Pyridinecarboxamide	Aphids, Mealy bugs, Thrips, White flies	120-140g/Ha	III	6	CAUTION
 TRIANUM	Trichoderma harzianum strain T22	Biological	Soil borne pathogens	2.5kg/Ha	IV	N/A	N/A
VELUM PRIME 500 SC	Fluopyram 500g/L	Carboxamide	Nematodes	0.8-1L/Ha	II	12	HARMFUL
VICTORY 72 WP	Metalaxyl 80g/Kg + Mancozeb 640g/Kg	Acylamide + Dithiocarbamate	Fungal-several	2.5kg/Ha	III	6	CAUTION





# PLANT NUTRITION PRODUCTS


PRODUCT	SPECIFICATIONS	TARGET	RATE
ACRECIO	NPK + Pure L-(Tryptopham+Methiorine, Acreciactiv, Humic & Fulvic acid)	Root Activator	10L/Ha
AGRAL 90	Synperonic NP8 900g/L	Non-ionic wetter/spreader for use with fungicides, herbicides to increase their efficiency.	0.25L/Ha
AGROMASTER	15-24-10+1.3MgO+10SO <sub>3</sub> +3.CaO+0.2B+0.2Zn	Controlled Release Fertilizer (High P)	400 - 600 kg/ha
	16-10-16+1.8MgO+14.2SO <sub>3</sub> +5CaO+0.2B+0.2Zn	Controlled Release Fertilizer (Balanced)	400 - 600 kg/ha
	24-6-12+1.4MgO+3.9CaO+11SO <sub>3</sub> +0.2B+0.2Zn	Controlled Release Fertilizer (High N)	400 - 600 kg/ha
	16-10-22+1MgO+8SO <sub>3</sub> +2.8CaO+0.2B+0.2Zn	Controlled Release Fertilizer (High K)	400 - 600 kg/ha
	25-5-10+1.7MgO+13.2SO <sub>3</sub> +4.6CaO+0.2B+0.2Zn	Controlled Release Fertilizer (High N)	400 - 600 kg/ha
AGRICULTURAL GYPSUM	89% soluble, 83% CaSO <sub>4</sub> ·2H <sub>2</sub> O, 30.12%CaO, 10.17%SiO <sub>2</sub> , 40.63%SO <sub>3</sub>	To correct soil alkalinity by reducing the pH	0.5-1.5ton/Ha
AGRICULTURAL LIME	85%CaCO <sub>3</sub> , 10%MgCO <sub>3</sub>	To correct soil acidity by increasing the pH value of soil	0.5-1.5ton/Ha
ALEXIN	Salicylate derivatives with sugar acid chelated calcium, K, Mg & B	Amplifies plant defense mechanism (priming)	1.5-2L/Ha
ALL CLEAR EXTRA	Cleaning Agents	Decontamination of spray tank, Cleaning outside of tank, hoses, nozzles, pumps and filters	0.5L/100L
AMIGUARD	Total organic matter 35.7%	Soil Conditioner	10lt/Ha
AMIRAN CALMAG	Ca + Mg+TE	For calcium deficiency correction	5-8lt/Ha
AMIRAN FOLIAR	11:8:6 +0.2MgO +TE	Balanced foliar fertilizer	2-4lt/Ha
AMIRAN FOLIAR	8:6:6 +0.2 MgO +TE	Balanced foliar fertilizer	2-4lt/Ha
AMMONIUM SULPHATE	21%N+24%S	Field grade fertilizer	200g/Ha
BIOFILM	Glycols, glyco ethers, propnols (976g/L)	Sticker, wetter, adjuvant	5ml/20L
BIOZYME	Natural plant extracts 78%, 0.1%Mg, 0.4%S, 0.1%Mn, 0.4%Fe, 0.3%Zn, 0.3%Bo	Biostimulant	0.5lt/Ha
BLADBUFF(BB5)	Phosphoric acid + Anionic and non ionic wetting agents	Acidifier/pH indicator for maintaining optimal pH on spray solution	40-50ml/100L
BROAD HACTARE ZnCu	60.0%Zn, 15.0%Cu, 10.0% Germination booster	For healthy and vigorous start of crops	Seed treatment:4L per Ton of seeds, Foliar: 0.3-0.5lt/Ha
CALCIPRILL	90.3% CaCO <sub>3</sub> (36% Ca)+ 3.3% MgCO <sub>3</sub> (1 % Mg)	To correct soil acidity by increasing the pH	125Kg/Ha
CALCIUM NITRATE	15.5%N + 21%Ca	Soluble fertilizer	150-200Kg/Ha
CAN	26%N + 21%Ca	Field grade fertilizer	150-200Kg/Ha
DISPERSAL	CaO-17.5%, Polyhydroxycarboxylic acids + Carbohydrates	Sodium saline soil and water corrector	Fertigation: 40-60 ppm + drenching rates



## ALPHABETICAL LIST - FERTILIZERS & OTHER PRODUCTS

PRODUCT	SPECIFICATIONS	TARGET	RATE
DEKOMPAKT	Nitrogen (N) as Nitrate 10%, Calcium (Ca) as Calcium Nitrate 12.6% + Fulvic Acids (1.1%)	To open up compacted soil	50L/Ha
DOLMAX	CaCO <sub>3</sub> -80% maximum, MgCO <sub>3</sub> -30% minimum, SiO <sub>2</sub> -2%	For soil liming	0.5-1.5ton/Ha
ECOGRL	39.6%Ca, 87.3%CaCO <sub>3</sub> , 1.13% Mg, 3.27% Mgco <sub>3</sub> , 0.97%Fe <sub>2</sub> O <sub>3</sub> , 0.19%K <sub>2</sub> O	High quality lime with 99% of particles less than 38 microns	100-300Kg/Ha
ECOKSIL	164g/Kg (K) + 127g/Kg (Si)	Improves plant cell structure and strength	1-2L/Ha
FERTIGOLD	Organic matter 60-80% organic carbon 30-40% CA, Mg, S + TE	Herbal Soil Conditioner	1-2ton/Ha or 500g per running metre
FOLIAREL	21 % B <sub>2</sub> O <sub>5</sub>	Soluble Boron	1kg/Ha
FOLTRON PLUS	N: 5.6%, P <sub>2</sub> O <sub>5</sub> : 19.5%, K <sub>2</sub> O: 5%, Fe, Zn, Mg, Mn, Bo, Cu, Mo, Folcisteine	Vegetative development	2lt/Ha
GRANFOL - K	Potassium phosphonate 760g/L	Establishment of natural defence system by the plant (priming)	3 - 4lt/Ha
GROWCAL MGB	17.0% Ca, 10.0%N, 4.0%Mg, 0.2%B (Heavy suspension)	Readily available Ca for foliar spray for deficiency correction	Foliar: 2lt/Ha
HAMPIRON X55	HBED 6% Iron 6% chelated Sodium free Potassium K <sub>2</sub> O 24% Ortho Ortho 5.5%	Wide pH range (3.5-12)	Fertigation: 10-15 ppm
HOMORIL - 4	IBA 0.4% Powder	Semi-soft cuttings	
HOMORIL - 6	IBA 0.6% Powder	Semi-hard cuttings	
HOMORIL - 8	IBA 0.8% Powder	Hard cuttings	
INTROGEL CALCIUM	N 14%, Ca 13%, K <sub>2</sub> O 1.70%, Mg 2%, B 0.26%, Fe 0.076%, Cu 0.031%, Mn 0.031%, Zn 0.076%, Mo 0.008%, Protein hydrolysate 10%	Highly concentrated Calcium gel	1 – 2L/Ha
INTROGEL SHOOT	N 20%, P 7.86%, K 10%, B 0.011%, Fe 0.033%, Cu 0.011%, Mn 0.011%, Zn(EDTA) 0.011%	Highly concentrated Npk + Microelements gel	1 – 2L/Ha
HUMIX SUPER	26% Humic Acid (as potassium humate)	Stimulates growth & soil structure	4lt/Ha
LIBFER 6%Fe	EDDHA 6%Fe(4% ortho-ortho isomer )	High pH (3-10)	Fertigation: 15-20ppm
LIBREL 13% Fe	EDTA 13% Fe	Low pH <6	Fertigation: 15-20ppm
LIBREL 7% Fe	DTPA 7%Fe	Neutral pH	Fertigation: 15-20ppm
MAGNESIUM NITRATE	11.0%N + 9.5%Mg	Soluble fertilizer	Fertigation
MAGNESIUM SULPHATE	10%MgO% + 13%S	Soluble fertilizer	Fertigation
MAP	12%N +61%P <sub>2</sub> O <sub>5</sub>	Soluble fertilizer	Fertigation
MAXIBOOST/PROMINENT	Mg 10.2g/L, EDTA Fe 5.7g/L, EDTA Mn 2.8g/L, EDTA Zn 1.7g/L, EDTA Cu 2.9g/L, Mo 0.04g/L, S 13.8g/L, Auxins 8.8mg/L, Cytokinins 0.025mg/L	Unique combination of 80% cytokinins and auxins and 20% chelated micro nutrients	2-4L/Ha
MICROSOL B	EDTA 5%Fe, 2.5%Mn, 1.0%Zn, 0.75%Cu, 2.5%B, 0.035%Mo	Chelated trace elements with High Boron	Fertigation: 6-12ppm
MICROSOL IPJ	EDTA 5.7%%Fe, 2.8%Mn, 2.3%Zn, 1.0%Cu, 1.9%B, 0.5%Mo	Chelated trace elements (Balanced)	Fertigation: 6-12ppm
MICROSOL PLAIN	EDTA 7.18%Fe, 3.57%Mn, 1.77%Zn, 0.24%Cu, 0.18%Mo	Chelated trace elements (Without Boron)	Fertigation: 6-12ppm
MICROSTAR	12%N + 43%P <sub>2</sub> O <sub>5</sub> + 2%MgO+11%S+0.7%	Unique starter, Microgranulated field grade fertilizer	20Kg/Ha
MKP	52%P <sub>2</sub> O <sub>5</sub> + 34.5%K <sub>2</sub> O	Soluble fertilizer	
MULTICOTE 14:14:14 + TE	14-14-14 +TE 14%N+14%P <sub>2</sub> O <sub>5</sub> +14%K <sub>2</sub> O	Controlled fertiliser	60-80g/M <sup>2</sup> or 10-15g/plant
MULTICOTE 15:7:25 + TE	15-7-25 +TE 15%N +7%P <sub>2</sub> O <sub>5</sub> +25%K <sub>2</sub> O	Controlled fertiliser	60-80g/M <sup>2</sup> or 10-15g/plant
MULTI-K-PHAST	13%N +46%K <sub>2</sub> O	Acidic Potassium Nitrate	5Kg/Ha
MULTI npK	13%N + 2%P <sub>2</sub> O <sub>5</sub> + 44%K <sub>2</sub> O	Soluble Fertilizer	Fertigation
NPK-17:17:17	17%n+17%P <sub>2</sub> O <sub>5</sub> +17K <sub>2</sub> O	Field grade fertilizer	200Kg/Ha
NPK-20:20:0	20%N+20%P <sub>2</sub> O <sub>5</sub> +0K <sub>2</sub> O	Field grade fertilizer	200Kg/Ha
NPK-25:5:5 +5S	25%N+5%P <sub>2</sub> O <sub>5</sub> +5K <sub>2</sub> O +5S	Field grade fertilizer	200Kg/Ha
PILATUS	Fluvic acid 3.0%, Total amino acids 2.0% Inositol 0.4%, Zinc 4.9%, Total OM 30.0%	Root development	2L/Ha

## ALPHABETICAL LIST - FERTILIZERS & OTHER PRODUCTS

PRODUCT	SPECIFICATIONS	TARGET	RATE
POLYFEED(15:30:15)	15N%+30%P <sub>2</sub> O <sub>5</sub> % +15%K <sub>2</sub> O +2MgO +TE;	Balanced for use in initial stages	4Kg/Ha
POLYFEED(18:9:27)	18N%+9%P <sub>2</sub> O <sub>5</sub> % +27%K <sub>2</sub> O +2%MgO+TE;	High K for use at fruiting stage	4Kg/Ha
POLYFEED(19:19:19)	19N%+19%P <sub>2</sub> O <sub>5</sub> % +19%K <sub>2</sub> O + 1%MgO +TE;	Balanced for use at all stage	4Kg/Ha
POLYFEED(26:12:12)	26N%+12%P <sub>2</sub> O <sub>5</sub> % +12%K <sub>2</sub> O +2%MgO +TE;	Balanced for use at vegetative stage	4Kg/Ha
POTASSIUM SULPHATE	50%K <sub>2</sub> O+18%S	Soluble fertilizer	Fertigation
QUATROCOP	50% Copper	Flowable copper formulation for correction of Cu deficiencies	0.25lt/Ha
SSP	18%P <sub>2</sub> O <sub>5</sub> +18%Ca+12%S	Field Grade Fertilizer	200Kg/Ha
SUGAR TRANSFER	30% Organic acids	Increases sugar content in fruits	2.5lt/Ha
SULPHURIC ACID	98% Sulphuric Acid	Micro-granulated compound fertilizer	30-40Kg/Ha
SUPA TRACE	3.3%N,1.6%Fe,1.8% Zn,1.4%Mg, 1.3%Mn, 0.6 Cu, 4.8%S, 0.6%B, Mo0.03% (Organic Acids)	Corrects all deficiency	2.5-3L/Ha
SUPAFILM	Glycoethers, fatty acids, spreading & wetting	Spreader/sticker for use on outdoor	Foliar:15ml//100lt
SUPER BORON	15%B & 6.5%N in Heavy Suspension	Corrects B & N deficiency	0.5-1.0lt/Ha
SUPALINK	Organic polyamines	Penetrant, compatibility and unclogging agent	Drip cleaning: 3lts/Ha Compatibility: 2ml/lit Penetrant: 1lt/Ha
SUPER MANG	50% Mn,6.9% N as urea	Supplies Mn & N	0.5-1.0lt/Ha
SUPER NITRO HUMIX	42% Liquid Nitrogen as Urea + 3% Humic Acid	Slow release Urea	Foliar: 5-10L/Ha (Drenching: 10-20L/Ha)
TIGER TRACE	7.5g/kg Manganese (Mn) 7.0 g/kg Copper (Cu) 10.0g/kg Iron (Fe) 90.0g/kg Zinc (Zn) 650 g/kg Sulphur (S)	Field Grade Fertilizer	20kg/Ha
T.O.G. 3	8Hydroxyquinoline	Post Harvest solution for Gypsophila	15-20ml/10lt
T.O.G. 30	Hydroxyquinoline, QAC (75g/L)	Post Harvest solution	3.5ml/10lt
T.O.G. 6	Stabilized chlorine in sodium dichloisocyanurate 55%	Post Harvest solution/Disinfectant	1g/11.4lt
 T.O.G. 10	Aluminium sulphate, Quaternary amonium, Citric acid and surfacants	Post-harvest hydration solution for cut roses and hydrangea flowers	1ml in 1L of water
T.O.G. 75	Stabilized Silver thiosulphate (8ppm Silver)	For use on ethylene sensitive flower	30-50ml/10lt
TIVAG	GA3 4% EC	Biostimulant	100ml/100L
 TRIAMIN PLUS	21% free amino acids with microelements	Biostimulant	Foliar: 3.0-4.0lt/Ha
 TRIAMIN CAB	Calcium cheletad Amino acids with Boron	Biostimulant	Foliar: 3.0-4.0lt/Ha
TSP	46%P <sub>2</sub> O <sub>5</sub> + 12%Ca +1%S	Field grade fertilizer	200Kg/Ha
UREA PHOSPHATE	18%N,44%P <sub>2</sub> O <sub>5</sub>	Field grade fertilizer, Soluble Fertilizer	Top Dressing: 100-130Kg/Ha planting, Fertigation: 70-100ppm
 XILOTROM	Plant organic matter	Soil conditioner	10lt/Ha split into two
YARALIVA NITRABOR	15%N + 25.6 CaO + 0.3% B	Field grade fertilizer	150Kg/Ha
ZINC 70	70% Liquid Zn	Supplies Zinc	0.5-1.0lt/Ha

# FUNGICIDES

A fungicide is a specific type of pesticide (chemical or biological in origin) that controls fungal disease by inhibiting the growth of fungal spores or killing the fungus causing the disease. Different crops are affected by different fungi.

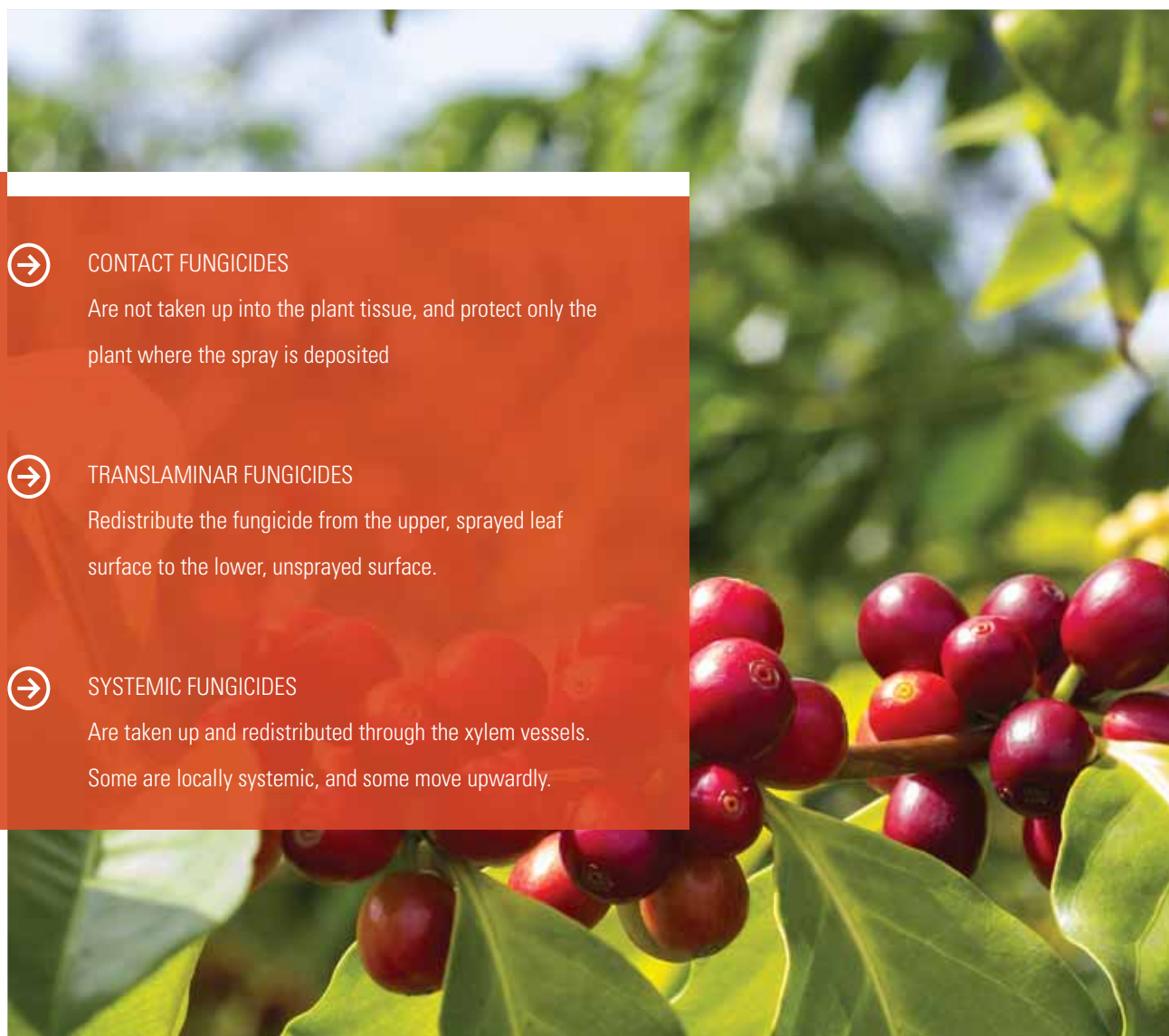
One fungal disease can affect more than one crop, similarly, a crop can be affected by more than one fungal disease

Fungicides can be Preventive (used before the disease sets in) or

Curative (used after the disease sets in) or both Preventive and Curative.

Fungicides are further categorized into Contact, Translaminar or Systemic.

*With a wide array of field proven products from world renowned leaders, Amiran Kenya is providing farmers with cost effective solutions to all fungal problems for a better crop yield.*



## CONTACT FUNGICIDES

Are not taken up into the plant tissue, and protect only the plant where the spray is deposited



## TRANSLAMINAR FUNGICIDES

Redistribute the fungicide from the upper, sprayed leaf surface to the lower, unsprayed surface.



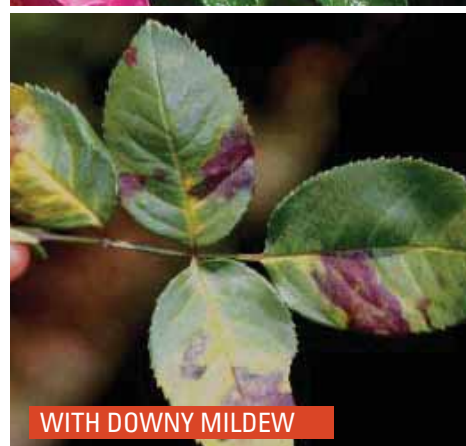
## SYSTEMIC FUNGICIDES

Are taken up and redistributed through the xylem vessels. Some are locally systemic, and some move upwardly.



## CONTROL OF DOWNY MILDEW

PRODUCT	ACTIVE INGREDIENT	MODE / RATE OF USE	REMARKS
AGRIPHITE 600	Dipotassium Phosphite 61%	Foliar spray: 300ml/100L Soil drench: 4-5L/Ha	Very systemic/ protective
AGRIXYL 407	Monopotassium Phosphite 40%+ Metalaxyl 7%	Foliar spray: 250-350ml/100L	Very systemic/curative
AMIDIL 68 WG	Metalaxyl-M 40g/kg + Mancozeb 640g/kg	Foliar 250g/100L	Contact /systemic/ Curative(Syngenta clone)
AMIMAX	Cymoxanil 8%+ Mancozeb 64%	2Kg/Ha	Very Systemic/Contact
BIGO 400 SC	Fluazinam 200g/L + Dimethomorph 200g/L	0.75-1L/Ha	Contact/ Systemic
EMTHANE M-45 WP	Mancozeb 80%	Foliar spray: 200g/100L	Contact/protective, start early
FOSTONIC 80 WP	Fosetyl AI 833.3g/Kg	Soil Drench: 2.5-5.0Kg/Ha	Very systemic/curative
INFINITO 687.5 SC	Fluopicolide 62.5g/L + Propamocarb Hydrochloride 625g/L	Foliar spray: 1.2-1.5L/Ha	Protective/Curative
KOBE 1.2 SL	Chrysophanol parietien 1.2%	Foliar spray: 1-1.5L/Ha	Contact/Protective
METACOP 450 WP	Metalaxyl 50g/L+ Copper Oxychloride 400g/Kg	Foliar spray: 2 – 2.5 kg/Ha	Protective/Curative
ODEON 82.5 WDG	Chlorothalonil 825g/Kg	Foliar spray: 120-150g/100L	Contact / translaminal
PROPLANT 722 SL	Propamocarb Hydrochloride 722g/L	Foliar spray: 150-300ml/100L Soil drench: 1.5-3.0L/Ha	Systemic/curative
SPHINX EXTRA 713 WDG	Dimethomorph 113g/kg + Folpet 600g/kg	Foliar: 250g/100L	Systemic / Curative
VICTORY 72 WP	Metalaxyl 80g/Kg + Mancozeb 640g/Kg	Foliar spray: 250g/100L	Very systemic/curative



## CONTROL OF POWDERY MILDEW

PRODUCT	ACTIVE INGREDIENT	MODE / RATE OF USE	REMARKS
AMITIV 250 SC	Azoxystrobin 250g/l	Foliar: 50-75ml/100L	Systemic / Curative (Syngenta clone)
APRIL COMBI 38.3 EW	Tebuconazole 250g/L + Pyroxamine 133g/L	250ml/Ha	Systemic/Curative
ARDENT 50 SC	Kresoxim-methyl 500g/L	Foliar spray: 50ml/100L	Translaminal/protective, start early
CYFLAMID 5 EW	Cyflufenamid 50g/L	Foliar spray: 50ml/100L	Preventive/Curative
DIFFERENCE 250 EC	Difenoconazole 250g/L	Foliar: 50-75ml/100L	Systemic / Curative
DISARM	Fluoxastrobin 480g/Kg	Foliar spray: 300ml/Ha	Systemic/Curative
DOMARK 40 EW	Tetraconazole 40g/L	Foliar spray: 100ml/100L	Systemic / Curative
GOLDAZIM 500 SC	Carbendazim 500g/L	Foliar spray: 100ml/100L	Systemic / Curative
IMPULSE 500 EC	Spiroxamine 500g/L	Foliar spray: 75-100ml/100L	Systemic / Curative
KOBE 1.2 SL	Chrysophanol parietien 1.2%	Foliar spray: 1-1.5L/Ha	Systemic (Induces Plant Immunity)
NIMROD 25 EC	Bupirimate 250g/L	Foliar Spray: 250-300ml/100L	Systemic / Curative
ORIU 25EW	Tebuconazole 250g/L	Foliar spray: 50-75ml/100L	Systemic / Curative
OTHELLO 250 WDG	Azoxystrobin 250g/Kg	Foliar: 50g/100L	Systemic / Curative
POLAR 50 WG	Polyoxin AI (complex 50%)	Foliar: 25g/100L	Translaminal / Curative
PREV AM	Sodium Tetraborohydrate Decahydrate 0.99 w/v	Foliar: 2ml/L	Contact / Toxic
SULFOLAC 80 WG	Sulphur 800g/Kg	Foliar: 3Kg/Ha	Contact / Preventive



## CONTROL OF BOTRYTIS BLIGHT

PRODUCT	ACTIVE INGREDIENT	MODE / RATE OF USE	REMARKS
AMITIV 250 SC	<i>Azoxystrobin 250g/l</i>	Foliar spray: 50-75ml/100L	Systemic / Curative (Syngenta clone)
BANJO 500 SC	<i>Fluazinam 500g/L</i>	Foliar spray: 1L/Ha	Contact/Non-systemic
DIFFERENCE 250 EC	<i>Difenoconazole 250g/L</i>	Foliar: 50-75ml/100L	Systemic / Curative
FOLPAN 50 SC	<i>Folpet 500g/L</i>	Foliar Spray: 200ml/100L	Contact/protective, start early
GOLDAZIM 500 SC	<i>Carbendazim 500g/L</i>	Foliar spray: 100ml/100L (1L/Ha)	Systemic / Curative
IPPON 500 SC	<i>Iprodione 500g/L</i>	Foliar spray: 100ml/100L (1-1.2L/Ha)	Contact / Curative
MERPAN 83 WP	<i>Captan 83%</i>	Foliar spray: 150g/100L	Contact / Protective, start early
NORDOX SUPER 75 WP	<i>Cuprous oxide (equivalent to 75% metallic copper)</i>	3.8Kg/Ha 2.4Kg/Ha	Contact / Protective
ODEON 82.5 WDG	<i>Chlorothalonil 825g/Kg</i>	Foliar spray: 120-150g/100L	Contact/protective, start early
OTHELLO 250 WDG	<i>Azoxystrobin 250g/Kg</i>	Foliar: 50g/100L	Systemic / Curative
POLAR 50 WG	<i>Polyoxin AI (complex 50%)</i>	Foliar spray: 50g/100L	Translaminar/Curative
PYRUS 400 SC	<i>Pyrimethanil 404g/L</i>	Foliar spray: 100-120ml/100L	Translaminar/Curative



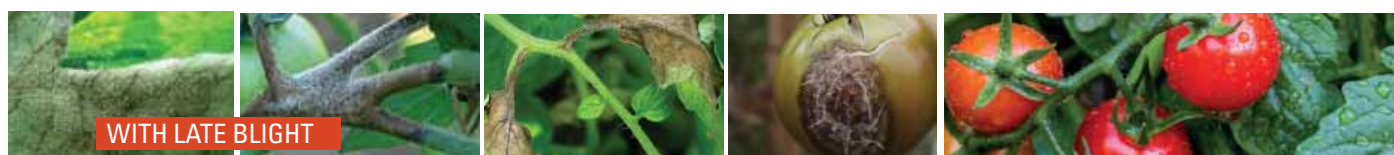
WITHOUT



WITH BOTRYTIS

## CONTROL OF LATE BLIGHT

PRODUCT	ACTIVE INGREDIENT	MODE / RATE OF USE	REMARKS
AGRIXYL 407	<i>Monopotassium phosphite 40%+ Metalaxyl 7%</i>	Foliar spray: 250-350ml/100L	Very systemic/curative
AMICOP 50 WP	<i>Copper oxychloride 50% metallic copper</i>	Foliar: 2.0-3.0Kg/Ha	Contact/protective, start early
AMIDIL 68 WG	<i>Metalaxyl-M 40g/kg + Mancozeb 640g/kg</i>	Foliar: 250g/100L	Contact /systemic/Curative(syngenta clone)
AMIMAX 720 WP	<i>Mancozeb 640g/Kg + Cymoxanil 80g/Kg</i>	Foliar: 2Kg/Ha	Very Systemic/curative
EMTHANE M-45	<i>Mancozeb 80%</i>	Foliar spray: 250g/100L	Contact/protective, start early
FUNGURAN-OH 50 WP	<i>Copper hydroxide 77%</i>	Foliar spray: 150-200g/100L	Contact/protective, start early
MELODY DUO 69 WG	<i>Propineb 600g/Kg + Iprovalicarb 90g/kg</i>	Foliar spray: 2.0-2.5kg/Ha	Protective/curative
METACOP 450 WP	<i>Metalaxyl 50g/L+ Copper Oxychloride 400g/Kg</i>	Foliar spray: 2 – 2.5 kg/Ha	Protective/Curative
ODEON 82.5 WDG	<i>Chlorothalonil 825g/Kg</i>	Foliar spray: 120-150g/100L	Contact/protective, start early
SPHINX EXTRA 713 WDG	<i>Dimethomorph 113g/Kg + folpet 600g/Kg</i>	Foliar spray: 250g/100L	Systemic/curative
VICTORY 72 WP	<i>Metalaxyl 80g/Kg + Mancozeb 640g/Kg</i>	Foliar spray: 250g/100L	Very systemic/curative



WITH LATE BLIGHT

## CONTROL OF LEAF RUST

PRODUCT	ACTIVE INGREDIENT	MODE / RATE OF USE	REMARKS
AMICOP 50 WP	<i>Copper oxychloride 50% metallic Copper</i>	Foliar: 2.0-3.0Kg/Ha	Contact/protective, start early
AMITIV 250 SC	<i>Azoxystrobin 250g/l</i>	Foliar: 50-75ml/100L (0.5-0.75L/Ha)	Systemic / Curative (syngenta clone)
APRIL COMBI 38.3 EW	<i>Tebuconazole 250g/L + Pyroxamine 133g/L</i>	0.4L/Ha	Systemic/Curative
ARDENT 50 SC	<i>Kresoxim-methyl 500g/L</i>	Foliar: 50ml/100L	Translaminar/ Protective, start early
DIFFERENCE 250 EC	<i>Difenoconazole 250g/L</i>	Foliar: 50-75ml/100L	Systemic / Curative
DOMARK 40 EW	<i>Tetraconazole 40g/L</i>	Foliar spray: 0.6L/Ha	Systemic / Curative
EMTHANE M80 45- WP	<i>Mancozeb 80%</i>	Foliar spray: 250g/100L	Contact/protective, start early
IMPULSE 500 EC	<i>Spiroxamine 500g/L</i>	75 - 100ml/100L	Systemic / Curative
METACOP 450 WP	<i>Metalaxyl 50g/L+ Copper Oxychloride 400g/Kg</i>	Foliar spray: 2 – 2.5 kg/Ha	Protective/Curative
NORDOX SUPER 75 WP	<i>Cuprous oxide (equivalent to 75% metallic copper)</i>	3.8Kg/Ha 2.4Kg/Ha	Contact / Protective
ODEON 82.5 WDG	<i>Chlorothalonil 825g/Kg</i>	Foliar spray: 120-150g/100L	Contact/protective, start early
ORIU 25EW	<i>Tebuconazole 250g/L</i>	Foliar spray: 50-75ml/100L	Systemic / Curative
OTHELLO 250 WDG	<i>Azoxystrobin 250g/Kg</i>	Foliar: 50g/100L	Systemic / Curative
SAF T SIDE 800 EC	<i>Paraffinic Oil 800g/L</i>	Foliar: 4L/Ha	Suffocation
SHAR COMBI 280CS	<i>Azoxystrobin 200g/L + Cyproconazole 80g/L</i>	Foliar: 0.75L/Ha	Preventive / Curative
SOPRANO 250 SC	<i>Epoxiconazole 125g/l + Carbendazim 125g/l</i>	Foliar spray: 0.8L/Ha	Systemic / Curative



WITHOUT



WITH LEAF RUST



## CONTROL OF ALTERNARIA LEAF SPOTS

PRODUCT	ACTIVE INGREDIENT	MODE / RATE OF USE	REMARKS
AMICOP 50 WP	<i>Copper oxychloride</i> 50% metallic Copper	Foliar: 2.0-3.0Kg/Ha	Contact/protective, start early
IPPON 500 SC	<i>Iprodione</i> 500g/L	Foliar spray: 100ml/100L (1-1.2L/Ha)	Translaminar / Curative
ODEON 82.5 WDG	<i>Chlorothalonil</i> 825g/Kg	Foliar spray: 120-150g/100L	Contact/protective, start early
PYRUS 400 SC	<i>Pyrimethanil</i> 404g/L	Foliar spray: 100-120ml/100L	Translaminar/Curative



## CONTROL OF ANTHRACNOSE SPOTS

PRODUCT	ACTIVE INGREDIENT	MODE / RATE OF USE	REMARKS
AMICOP 50 WP	<i>Copper oxychloride</i> 50% metallic Copper	Foliar: 2.0-3.0Kg/Ha	Contact/protective, start early
FUNGURAN-OH 50 WP	<i>Copper hydroxide</i> 77%	Foliar spray: 150-200g/100L	Contact/protective, start early
GOLDAZIM 500 SC	<i>Carbendazim</i> 500g/L	Foliar spray: 100ml/100L	Systemic / Curative
ODEON 82.5 WDG	<i>Chlorothalonil</i> 825g/Kg	Foliar spray: 120-150g/100L	Contact/protective, start early



## CONTROL OF PHYTOPHTHORA & PYTHIUM ROOT ROT

PRODUCT	ACTIVE INGREDIENT	MODE / RATE OF USE	REMARKS
AGRIPHITE 600	<i>Dipotassium phosphite</i> 61%	Soil drench: 3L/Ha	Very systemic/Protective
AMIDIL 68 WG	<i>Metalaxyl-M</i> 40g/kg + <i>Mancozeb</i> 640g/kg	Foliar: 250g/100L	Contact/systemic/Curative (syngenta clone)
FOSTONIC 80 WP	<i>Fosetyl Al</i> 833.3g/Kg	Soil drench: 2.5-3.0L/Ha	Very systemic, start early
PROPLANT 722 SL	<i>Propamocarb hydrochloride</i> 722g/L	Soil drench: 1.5-3.0L/Ha	Very systemic, start early
VICTORY 72 WP	Contact/protective, start early	Soil drench: 2.5Kg/Ha	Very systemic/curative



## CONTROL OF FUSARIUM ROOT ROT

PRODUCT	ACTIVE INGREDIENT	MODE / RATE OF USE	REMARKS
GOLDAZIM 500 SC	<i>Carbendazim</i> 500g/L	Soil drench: 5-10L/sq.m. of 100ml/100L soln. Propague drip: 200ml/100L	Systemic / Curative
IPPON 500 SC	<i>Iprodione</i> 500g/L	Foliar spray: 100ml/100L (1-1.2L/Ha) Propague drip:120-240ml/100L	Contact / Curative
TRIANUM	<i>Trichoderma harzianum</i> strain T22	Soil drench: 2.5kg/Ha	Preventive



## CONTROL OF ASCOCHYTA SPOTS

PRODUCT	ACTIVE INGREDIENT	MODE / RATE OF USE	REMARKS
AGRIPHITE 600	<i>Dipotassium Phosphite</i> 61%	Soil drench: 300ml/100L (3-5L/Ha)	Very systemic/Protective
GOLDAZIM 500 SC	<i>Carbendazim</i> 500g/L	Foliar spray: 500ml/Ha	Systemic / Curative
IPPON 500 SC	<i>Iprodione</i> 500g/L	Foliar spray: 500ml/Ha	Contact / Curative





## CONTROL OF HELMINTHOSPORIUM SPOTS/BLIGHT

PRODUCT	ACTIVE INGREDIENT	MODE / RATE OF USE	REMARKS
DOMARK 40 EW	Tetraconazole 40g/L	Foliar spray: 50-100ml/100L	Systemic / Curative
GOLDAZIM 500 SC	Carbendazim 500g/L	Foliar spray: 50-100ml/100L	Systemic / Curative
IPPON 500 SC	Iprodione 500g/L	Foliar spray: 100ml/100L (1-1.2L/Ha)	Contact / Curative, Start early
ORIOUS 25 EW	Tebuconazole 250g/L	Foliar spray: 50-75ml/100L	Systemic / Curative
SOPRANO C 250 C	Epoxiconazole 125g/Lt + Carbendazim 125g/Lt	Foliar spray: 0.8L/Ha	Systemic / Curative



## CONTROL OF GENERALIZED LEAF SPOTS

PRODUCT	ACTIVE INGREDIENT	MODE / RATE OF USE	REMARKS
AMICOP 50 WP	Copper oxychloride 50% metallic Copper	Foliar: 2.0-3.0Kg/Ha	Contact/protective, start early
EMTHANE M-45	Mancozeb 80%	Foliar spray: 200g/100L	Contact/protective, start early
FOLPAN 50 SC	Folpet 500g/L	Foliar spray: 200g/100L	Contact/protective, start early
FUNGURAN-OH 50 WP	Copper hydroxide 77%	Foliar spray: 150-200g/100L	contact/protective, start early
GOLDAZIM 500 SC	Carbendazim 500g/L	Foliar spray: 100ml/100L	Systemic / Curative
IPPON 500 SC	Iprodione 500g/L	Foliar spray: 100ml/100L (1-1.2L/Ha)	Contact / Curative
MERPAN 83 WP	Captan 83%	Foliar spray: 150g/100L	contact/protective, start early



## CONTROL OF RHIZOCTONIA ROOT ROTTS

PRODUCT	ACTIVE INGREDIENT	MODE / RATE OF USE	REMARKS
AGRIXYL 407	Monopotassium phosphite 40% + Metalaxyl 7%	Soil drench: 4.5-7.0L/Ha	Very systemic, start early
GOLDAZIM 500 SC	Carbendazim 500g/L	Propague drip: 200ml/100L	Systemic / Curative
IPPON 500 SC	Iprodione 500g/L	Foliar spray: 100ml/100L (1-1.2L/Ha)	Contact / Curative
MERPAN 83 WP	Captan 83%	Soil drench: 1.8-2.0Kg /Ha	Contact/protective, start early
PROPLANT 722 SL	Propamocarb hydrochloride 722g/L	Soil drench: 1.5-3.0L/Ha	Very systemic, start early
RIZOLEX 50WP	Tolclofos Methyl 50g/kg	5 – 10/Ha	Contact / Curative/Protective



## CONTROL OF SEPTORIA LEAF SPOTS

PRODUCT	ACTIVE INGREDIENT	MODE / RATE OF USE	REMARKS
DOMARK 40 EW	Tetraconazole 40g/L	Foliar spray: 50-100ml/100L	Systemic / Curative
EMTHANE M-45 WP	Mancozeb 80%	Foliar spray: 200g/100L	Contact/protective, start early
FOLPAN 50 SC	Folpet 500g/L	Foliar spray: 200ml/100L	Contact/protective, start early
FUNGURAN-OH 50 WP	Copper hydroxide 77%	Foliar spray: 150-200g/100L	Contact/protective, start early
GOLDAZIM 500 SC	Carbendazim 500g/L	Foliar spray: 50-100ml/100L	Systemic / Curative
ODEON 82.5 WDG	Chlorothalonil 825g/Kg	Foliar spray: 120-150g/100L	Contact/protective, start early
ORIOUS 25 EW	Tebuconazole 250g/L	Foliar spray: 50-75ml/100L	Systemic / Curative



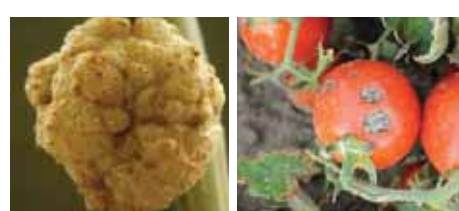
## SEED DRESSERS

PRODUCT	ACTIVE INGREDIENT	MODE / RATE OF USE	REMARKS
SEED PLUS 30 WS	Imidacloprid 10% + Carbendazim 10% + Metalaxyl 10%	Dress with 250g/100kg seed	Contact/Systemic (To be used with Broad Hactare)
SEED POWER 250 FS	Imidacloprid 200g/L + Difenconazole 50g/L	Maize – 3L/Ton/ 4 litres of water Wheat – 2L/Ton/ 4 litres of water.	Contact/Systemic



## CONTROL OF AGROBACTERIUM & BACTERIAL SPOTS

PRODUCT	ACTIVE INGREDIENT	MODE / RATE OF USE	REMARKS
AMICOP 50 WP	Copper oxychloride 50% metallic Copper	Foliar: 2.0-3.0Kg/Ha	Contact/protective, start early
FUNGURAN-OH 50 WP	Copper hydroxide 50% metallic Copper	Painting: Make a thick paste Foliar spray: 150-200g/100L	Contact/protective, start early
KOBE 1.2 SL	Chrysophanol parietien 1.2%	Foliar:1.0L/Ha Spray: 2L/Ha	Protective, start early



# NEW NOVEL FUNGICIDES



**BIGO 400SC** Fluazinum 200g/L+Dimethomorph 200g/L

A novel and proven solution for control of downey mildew and botrytis on roses.

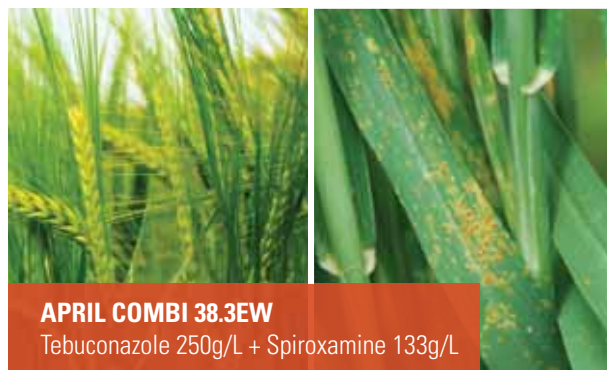
- A broad spectrum fungicide
- Fast acting and long lasting control
- Resistance management



**CYFLAMID 5EW** Cyflufenamid 50g/l

A New, Novel & Proven Solution for Control of Powdery Mildew on Roses

- Flexibility in Use
- IPM Compatible
- Proven Performance from field use in Rose Production



**APRIL COMBI 38.3EW**  
Tebuconazole 250g/L + Spiroxamine 133g/L

A systemic fungicide for the control of powdery mildew, leaf rust, leafspot and fusarium wilt

- Highly Systemic
- Cost effective
- Proven protection against fusarium in wheat
- Offers long lasting protection

FOR MORE INFORMATION  
CALL US NOW ON OUR  
TOLL FREE NUMBER

 0800 720 720



# INSECTICIDES

Insecticides are agents of chemical or biological origin used to control insects by; killing them or deterring them from feeding or preventing undesirable or destructive insect behaviour.

*With a wide array of field proven products from world renowned leaders, Amiran Kenya is providing farmers with cost effective solutions to all fungal problems for a better crop yield.*

Insecticides are classified according to the method of application and by the way they enter the insect's body. Many insecticides take effect in more than one way and target more than one insect.



## STOMACH INSECTICIDES

Are applied on the surface of plants or are added to the bait. The insecticide is eaten along with the food material by insects that chew such as caterpillars.



## CONTACT INSECTICIDES

Are sprayed or dusted on the insect's body. The poison is absorbed through the body wall. Most soft-bodied insects are vulnerable to contact insecticides.



## FUMIGANTS

Are insecticidal gases. Insects that lurk out of reach of sprays are killed when they breathe the gas. In addition, the soil may be fumigated to destroy grubs or wire worms that attack roots.



## RESIDUAL INSECTICIDES

Are applied to foliage and they have a long lasting effect as they remain on the surface for a longer time. Insects absorb deadly doses by touching the poisoned surface.



## SYSTEMIC INSECTICIDES

Are absorbed by plant tissues, so that when insects feed on the sap they are controlled.





## CONTROL OF SPIDER MITES

PRODUCT	ACTIVE INGREDIENT	MODE / RATE OF USE	REMARKS
AMISIL	<i>Polyalkyleneoxide modified Heptamethyl trisilixane 80%</i>	Foliar spray: 0.6L/Ha 6ml/100L	Organosilicone
APOLLO 50 SC	<i>Clofentazine 500g/L</i>	Foliar spray: 70ml/100L	Contact, immature stages
AVID 1.8 EC	<i>Abamectin 18g/L</i>	Foliar spray: 50ml/100L	Translaminar, mobile stages
AVIRMEC 1.8 EC	<i>Abamectin 18g/L</i>	Foliar spray: 50ml/100L	Translaminar, mobile stages
BREAKTHRU	<i>Siloxane copolymer 100% w/w</i>	Foliar spray: 100-200ml/Ha	Organosilicone
KANEMITE 15 SC	<i>Acequinocyl 150g/L</i>	Foliar spray: 40ml/100L	Contact, all stages
LEVO 2.4 SL	<i>Prosuler Oxymatrine 2.4%</i>	Foliar spray: 40ml/100L	Contact, Antirepellant, Antifeedant
MERCUR 500 SC	<i>Diafenthiuron 500g/L</i>	Foliar spray: 60-80ml/100L	Contact
NISSORUN 100 EC	<i>Hexythiazox 100g/L</i>	Foliar spray: 50ml/100L	Contact, immature stages
SAF-T-SIDE 800 EC	<i>Paraffinic oil 80%</i>	Foliar spray: 4.0L/Ha	Suffocation



## CONTROL OF WHITE FLIES

PRODUCT	ACTIVE INGREDIENT	MODE / RATE OF USE	REMARKS
ASTER EXTRIM 20 SL	<i>Acetamiprid 150g/L + Cypermethrin 50g/L</i>	Foliar spray: 25-30ml/100L	Contact & Systemic
BIFERAN 25 EC	<i>Bifenthrin 25g/L</i>	Foliar spray: 50ml/100L	Contact
BOTANIGARD ES	<i>Beauveria basiana (GHA stain) 11.3%</i>	Foliar spray: 1-3L/Ha	Contact biological insecticide
BUFFALO 100 OD	<i>Imidacloprid 75g/L+Betacyfluthrin 25g/L</i>	Foliar spray: 400ml/Ha	Contact & Systemic
CALYPSO 480 SC	<i>Thiacloprid 480g/L</i>	Foliar spray: 30-100ml/100L	Systemic
CHESS 50 WG	<i>Pymetrozine 500g/L</i>	Foliar spray: 50g/100L	Systemic
CLOSER 240 SC	<i>Sulfoxaflor 240g/L</i>	Foliar spray: 120ml/1000L	Systemic
CYRUX 10 EC	<i>Alpha Cypermethrin 100g/L</i>	Foliar spray: 250ml/Ha	Contact, non systemic
DIVIPAN 100 EC	<i>Dichlorvos 1000g/L</i>	Foliar spray: 100-200ml/100L	Contact, vapour activity
GALIL 300 SC	<i>Imidacloprid 250g/L + Bifenthrin 50g/L</i>	Foliar spray: 250ml/Ha	Contact, Systemic
GOLAN 20 SP	<i>Acetamiprid 200g/L</i>	Foliar spray: 20-25g/100L	Systemic, Translaminar
HOTSHOOT 70 WDG	<i>Imidacloprid 700g/Kg</i>	Foliar spray: 100-200g/Ha	Systemic
KOHINOR 200 SL	<i>Imidacloprid 200g/L</i>	Foliar spray: 50ml/100L Soil drench: 0.3-0.5ml/4L/sq.m.	Systemic
LAMBDEX 5 EC	<i>Lambdacyhalothrin 50g/L</i>	Foliar spray: 35ml/100L	Contact
LEVO 2.4 SL	<i>Prosuler Oxymatrine 2.4%</i>	Foliar spray: 40ml/100L	Contact, Antirepellant, Antifeedant
NEEMRAJ SUPER-3000	<i>Azadiractin 0.3%</i>	Foliar spray: 100ml/100L	Contact/anti moulting/ repellent
PACYLOS 18 WP	<i>Paecilomyces fumosoroseus strain FE9901</i>	Foliar spray: 1-2Kg/Ha	Contact
SAF-T-SIDE 800 EC	<i>Paraffinic oil 80%</i>	Foliar spray: 4.0L/Ha	Suffocation
TEPPEKI 50 WG	<i>Flonicamid 500g/kg</i>	Foliar spray: 120-140g/Ha	Systemic, Translaminar



## CONTROL OF THRIPS

PRODUCT	ACTIVE INGREDIENT	MODE / RATE OF USE	REMARKS
ASTER EXTRIM 20 SL	Acetamiprid 150g/L + Cypermethrin 50g/L	Foliar spray: 25-30ml/100L	Contact & Systemic
BIFERAN 25 EC	Bifenthrin 25g/L	Foliar spray: 50ml/100L	Contact
BOTANIGARD ES	<i>Beauveria basiana</i> (GHA stain) 11.3%	Foliar spray: 1-3L/Ha	Contact biological insecticide
BUFFALO 100 OD	Imidacloprid 75g/L + Betacyfluthrin 25g/L	Foliar spray: 400ml/Ha	Contact & Systemic
CALYPSO 480 SC	Thiacloprid 480g/L	Foliar spray: 30ml/100L	Systemic
CUTTER 112 EC	Acetamiprid 64g/L+ Emamectin Benzoate 48g/L	Foliar spray: 0.25L/Ha	Contact & Systemic
CYRUX 10 EC	Alpha Cypermethrin 100g/L	Foliar spray: 250ml/Ha	Contact
DIVIPAN 100 EC	Dichlorvos 100g/L	Foliar spray: 100-200ml/100L	Contact
GALIL 300 SC	Imidacloprid 250g/L + Bifenthrin 50g/L	Foliar spray: 250ml/Ha	Contact, Systemic
GOLAN 20 SP	Acetamiprid 200g/L	Foliar spray: 20-25g/100L	Systemic, ovicidal activity
KOHINOR 200 SL	Imidacloprid 200g/L	Foliar spray: 50ml/100L Soil drench: 4-5L/Ha	Systemic
LAMBDEX 5 EC	Lambdacyhalothrin 50g/L	Foliar spray: 35ml/100L	Contact
LEVO 2.4 SL	Prosuler Oxymatrine 2.4%	Foliar spray: 40ml/100L	Contact, Antirepellant, Antifeedant
MORTEL 50 SC	Fipronil 50g/L	Foliar spray: 0.5L/Ha	Contact
NEEMRAJ SUPER-3000	Azadiractin 0.3%EC	Foliar spray: 100ml/100L	Anti moulting/Repellant
PACYLOS 18 WP	<i>Paecilomyces fumosoroseus</i> strain FE9901	Foliar spray: 1-2Kg/Ha	Contact
PROVE 1.92 EC	Emamectin Benzoate 19.2g/L	Foliar spray: 50ml/100L	Contact/Translaminar
RADIANT 120 SC	Spinetorun 120g/L	Foliar spray: 200-250ml/Ha	Contact/Translaminar
RIMON SUPRA 10 SC	Novaluron 100g/L	Foliar spray: 50 - 75ml/Ha	Contact IGR (larval stages)
SAF-T-SIDE 800 EC	Paraffinic oil 80%	Foliar spray: 4.0L/Ha	Suffocation
TEPPEKI 50 WG	Fonicamid 500g/kg	Foliar spray: 120-140g/Ha	Systemic, Translaminar



## CONTROL OF APHIDS

PRODUCT	ACTIVE INGREDIENT	MODE / RATE OF USE	REMARKS
ASTER EXTRIM 20 SL	Acetamiprid 150g/L + Cypermethrin 50g/L	Foliar spray: 25-30ml/100L	Contact & Systemic
BIFERAN 25 EC	Bifenthrin 25g/L	Foliar spray: 200ml/100L	Contact
BOTANIGARD ES	<i>Beauveria basiana</i> (GHA stain) 11.3%	Foliar spray: 1- 3L/Ha	Contact biological insecticide
BUFFALO 100 OD	Imidacloprid 75g/L + Betacyfluthrin 25g/L	Foliar spray: 400ml/Ha	Contact & Systemic
CALYPSO 480 SC	Thiacloprid 480g/L	Foliar spray: 30ml/100L	Systemic
CHESS 50 WG	Pymetrozine 500g/L	Foliar spray: 50g/100L	Systemic
CLOSER 240 SC	Sulfoxaflor 240g/L	Foliar spray: 120ml/1000L	Systemic
CYRUX 10 EC	Alpha Cypermethrin 100g/L	Foliar spray: 250ml/Ha	Contact
DIAZOL 60 EC	Diazinon 600g/L	Foliar spray: 100-150ml/100L	Contact
DIVIPAN 100 EC	Dichlorvos 100g/L	Foliar spray: 100-200ml/100L	Contact, vapour activity
GALIL 300 SC	Imidacloprid 250g/L + Bifenthrin 50g/L	Foliar spray: 250ml/Ha	Contact, Systemic
GOLAN 20 SP	Acetamiprid 200g/L	Foliar spray: 20-25g/100L	Systemic, Translaminar
KOHINOR 200 SL	Imidacloprid 200g/L	Foliar spray: 50ml/100L Soil drench: 4-5L/Ha	Systemic
LAMBDEX 5 EC	Lambdacyhalothrin 50g/L	L Foliar spray: 35ml/100L	Contact
LEVO 2.4 SL	Prosuler Oxymatrine 2.4%	Foliar spray: 40ml/100L	Contact, Antirepellant, Antifeedant
NEEMRAJ SUPER 3000	Azadiractin 0.3%	Foliar spray: 100ml/100L	Contact/anti moulting/repellant
PACYLOS 18 WP	<i>Paecilomyces fumosoroseus</i> strain FE9901	Foliar spray: 1-2Kg/Ha	Contact
PYRINEX 48 EC	Chloropyrifos 480g/L	Foliar spray: 150ml/100L	Contact
PYRINEX QUICK 256 ZC	Chloropyrifos 250g/L + Deltamethrin 6g/L	Foliar spray: 25ml/20L	Contact
TEPPEKI 50 WG	Fonicamid 500g/kg	Foliar spray: 120-140g/Ha	Systemic, Translaminar





## CONTROL OF LEAF MINER

PRODUCT	ACTIVE INGREDIENT	MODE / RATE OF USE	REMARKS
ASTER EXTRIM 20 SL	Acetamiprid 150g/L + Cypermethrin 50g/L	Foliar spray: 25-30ml/100L	Contact & Systemic
AVID 1.8 EC	Abamectin 18g/L	Foliar spray: 50ml/100L	Translaminar
AVIRMEC 1.8 EC	Abamectin 18g/L	Foliar spray: 50ml/100L	Translaminar
CLOSER 240 SC	Sulfoxaflor 240g/L	Foliar spray: 120ml/1000L	Systemic
CUTTER 112 EC	Acetamiprid 64g/L+ Emamectin Benzoate 48g/L	Foliar spray: 0.25L/Ha	Contact & Systemic
CYRUX 10 EC	Alpha Cypermethrin 100g/L	Foliar spray: 250ml/Ha	Contact
GOLAN 20 SP	Acetamiprid 200g/L	Foliar spray: 20-25g/100L	Systemic, Ovicidal activity
KOHINOR 200 SL	Imidacloprid 200g/L	Foliar spray: 50ml/100L Soil drench: 4-5L/Ha	Systemic
LEVO 2.4 SL	Prosuler Oxymatrine 2.4%	Foliar spray: 40ml/100L	Contact, Antirepellant, Antifeedant
PROVE 1.92 EC	Emamectin Benzoate 19.2g/L	Foliar spray: 50ml/100L	Contact/translaminar
RIMON SUPRA 10 SC	Novaluron 100g/L	Foliar spray: 50 - 75ml/100L	Contact IGR



## CONTROL OF FAW, DIAMOND BACK MOTH AND OTHER CATERPILLARS

PRODUCT	ACTIVE INGREDIENT	MODE / RATE OF USE	REMARKS
BELT 480 SC	Flubendiamide 480g/L	Foliar spray: 7.5-10ml/100L	Contact
BIO T PLUS	<i>B. Thuringensis</i> Kurstaki 32,000 IU	Foliar spray: 50-100g/100L	Contact
CUTTER 112 EC	Acetamiprid 64g/L+ Emamectin Benzoate 48g/L	Foliar spray: 0.25L/Ha	Contact & Systemic
DIAZOL 60 EC	Diazinon 600g/L	Foliar spray: 100ml/100L	Contact
DIVIPAN 100 EC	Dichlorvos 100g/L	Foliar spray: 100-200ml/100L	Contact, Vapour activity
INDOX	Indoxacarb 150g/L	Foliar spray: 250ml/Ha	Contact
LAMBDEX 5 EC	Lambdacyhalothrin 50g/L	Foliar spray: 0.35L/Ha	Contact
LEVO 2.4 SL	Prosuler Oxymatrine 2.4%	Foliar spray: 0.5L/Ha	Contact, Antirepellant, Antifeedant
PROVE 1.92 EC	Emamectin Benzoate 19.2g/L	Foliar spray: 0.3-0.5L/Ha	Contact/translaminar
RADIANT 120 SC	Spinetorum 120g/L	Foliar spray: 200-250ml/Ha	Contact/translaminar
RAPID 120 SC	Acetamiprid 100 gr/lt + Emamectin-benzoate 20 gr/lt	Foliar spray: 0.25 – 0.4 L/Ha	Contact & Systemic
RIMON SUPRA 10 SC	Novaluron 100g/L	Foliar spray: 0.5L/Ha	Contact IGR





## CONTROL OF MEALY BUG

PRODUCT	ACTIVE INGREDIENT	MODE / RATE OF USE	REMARKS
ASTER EXTRIM 20 SL	Acetamiprid 150g/L + Cypermethrin 50g/L	Foliar spray: 25-30ml/100L	Contact & Systemic
BIFERAN 25 EC	Bifenthrin 25g/L	Foliar spray: 50ml/100L	Contact, mortile stages
BOTANIGARD ES	<i>Beauveria basiana</i> (GHA stain) 11.3%	Foliar spray: 1-3L/Ha	Contact, biological insecticide
CHESS 50 WG	Pymetrozine 500g/Kg	Foliar soray: 0.4Kg/Ha	Systemic
CLOSER 240 SC	Sulfoxaflor 240g/L	Foliar spray: 120ml/1000L	Systemic
DIAZOL 60 EC	Diazinon 600g/L	Foliar spray: 100-150ml/100L	Contact
GOLAN 20 SP	Acetamiprid 200g/L	Foliar spray: 20-25g/100L	Systemic
HOTSHOOT 70 WDG	Imidacloprid 700g/Kg	Foliar spray: 200-100g/Ha	Systemic
KOHINOR 200 SL	Imidacloprid 200g/L	Foliar spray: 50ml/100L Soil drench: 4-5L/Ha	Systemic
LAMBDEX 5 EC	Lambdacyhalothrin 50g/L	Foliar spray: 35ml/100L	Contact
PYRINEX 48 EC	Chlorpyrifos 480g/L	Foliar spray: 100ml/100L	Contact
PYRINEX QUICK 256 ZC	Chlorpyrifos 250g/L + Deltamethrin 6g/L	Foliar spray: 25ml/20L	Contact
SAF-T-SIDE 800 EC	Paraffinic oil 80%	Foliar spray: 4.0L/Ha	Suffocant
TEPPEKI 50 WG	Fonicamid 500g/kg	Foliar spray: 120-140g/Ha	Systemic, Translaminar



## CONTROL OF NEMATODES

PRODUCT	ACTIVE INGREDIENT	MODE / RATE OF USE	REMARKS
CROP GUARD	Furfural 800g/L	Soil drench: 15-20L/Ha	Contact
FENOMEN 400 EC	Fenamiphos 400g/L	Soil drench: 20-24L/Ha	Contact & Systemic
NEEM RAJ SUPER	Azadiractin 0.3%	Soil drench: 3L/Ha	Contact/anti moulting/repellant
NEMATHORIN 150 EC	Fosthiazate 150g/L	Soil drench: 15L/Ha: With irrigation water	Contact
ROOTCAP	Ethoprophos 10g/Kg	32Kg/Acre or 2g per hole	Contact
VELUM PRIME 500 SC	Fluopyram 500g/L	0.8-1L/Ha	Systemic



## CONTROL OF TERMITES

PRODUCT	ACTIVE INGREDIENT	MODE / RATE OF USE	REMARKS
HOTSHOOT 70 WDG	Imidacloprid 700g/Kg	100 – 200g/ha	Farmland
KOHINOR 200 SL	Imidacloprid 200g/L	Drench: 25ml/10L/Mould hill	Farmland
MORTEL 50 SC	Fipronil 50g/L	Foliar spray: 0.5-1.0L/1000L	Contact
PYRINEX 48 EC	Chlorpyrifos 480g/L	Nest drench: 400ml/5L/sq.m. Post dip/spray: 400ml/5L	Timber/Posts Farmland





# NEW NOVEL INSECTICIDES



**CUTTER 112 EC** Acetamiprid 64g/L+  
Emamectin Benzoate 48g/L

A broad spectrum insecticide for the control of lepidoptera pests, thrips and leaf miners

- Long residual control; provides sharp consistent protection from insect pests between sprays
- Offers fast knockdown and broad spectrum control of damaging insects
- Low toxicity effects



**VELUM PRIME 500 SC** Fluopyram 500g/L

A non fumigant nematicide.

- Flexibility in Use
- IPM Compatible
- Proven Performance from field use in Rose Production



**BUFFALO 100 OD** Imidacloprid 75g/l+Betacyfluthrin 25g/L

An innovative, highly effective insecticide with broad spectrum of activity.

- OD formulation
- Quick knock down effect
- Easily absorbed in plant tissues and digested by the target pest
- Combination of two synergistic and complimentary AIs

“  
Assured protection  
from our basket  
of high quality  
cost effective  
insecticides

”



# HERBICIDES

Herbicides are pesticides used to kill or inhibit the growth of unwanted plants (weeds).

Commonly known as weed-killers, herbicides are categorized into selective and non-selective

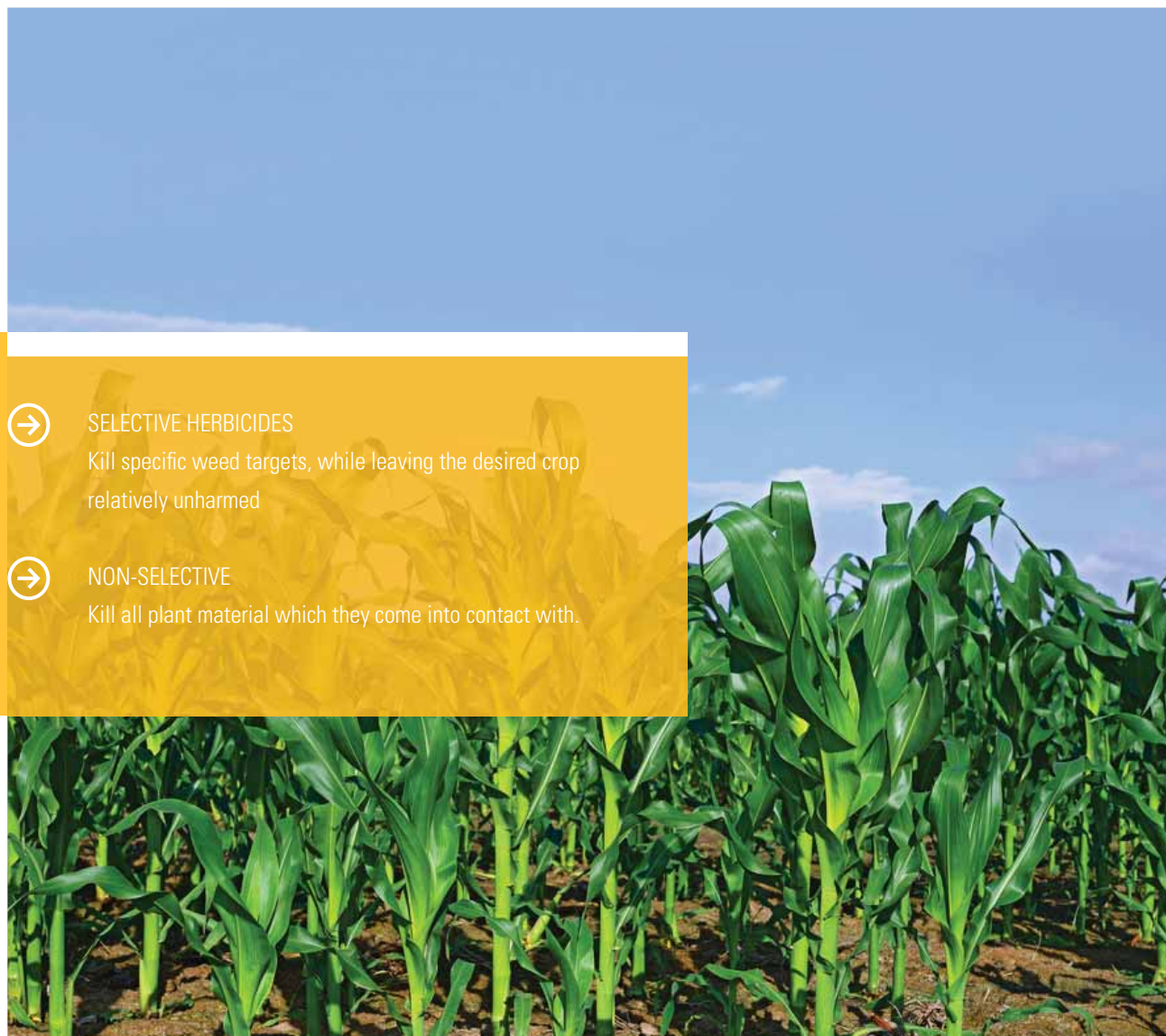
Some of these herbicides act by interfering with the growth of the weed and are often synthetic mimics of natural plant hormones.

They can be foliage-applied or soil herbicides, pre-emergent or post-emergent.

Contact herbicides kill only the plant organs with which they are in contact.

Translocated herbicides are effective against roots or other organs, to which they are transported from aboveground treated surfaces (soil).

*Amiran Kenya is providing farmers with cost effective solutions through outstanding products to help in all weed problems for improved crop yields.*



## SELECTIVE HERBICIDES

Kill specific weed targets, while leaving the desired crop relatively unharmed



## NON-SELECTIVE

Kill all plant material which they come into contact with.



## WEED CONTROL PRODUCTS

PRODUCT	ACTIVE INGREDIENT	MODE / RATE OF USE	REMARKS
AGIL 100 EC	<i>Propaquizafop 100g/L</i>	Post Emergence: 0.5-1.0L/Ha(100ml/20L)	Grass weeds on legume crops
ARIANE	<i>Fluroxypyr 60g/L+Clopyralid 23.3g/L +MCPA – 266.7g/L</i>	Post Emergence: 1.5L/Ha	Broad leaved weeds in cereals.
ATRAMET COMBI 50 SC	<i>Ametryn 250g/L + Atrazine 250g/L</i>	Pre Emergence: 3.0-5.0Kg/Ha	Sugarcane & Pineapple weed complex
CLODIGAN 240 EC	<i>Clodinafop-propargyl 24g/L</i>	Post Emergence: 0.4-0.6L/Ha	Annual grasses (Wheat)
DEBAR 450 SL	<i>Glyphosate 450g/L</i>	Annual and Perennial weeds: 1.5 – 2L/Ha	Non-Selective, Sedge,Perennial weeds, Annual weeds
DIUREX 80 WP	<i>Diuron 80%</i>	Pre Emergence: 2.5-3.0Kg/Ha	Sugarcane & Pineapple weed complex
GALIGAN 240 EC	<i>Oxyfluorfen 240g/L</i>	Pre and Post Emergence: 1.0L/Ha	Control of broad leaved and grass weeds in onion fields, tomatoes and cabbages
KALIF 480 EC	<i>Clomazone 480g/L</i>	Pre & Post Emergence: 1.0L/Ha	Control grasses, sedges and broad leaved weeds in rice
KIBOKO SUPER 7.5 EW	<i>Fenoxaprop-p-ethy 75g/L</i>	Post Emergence: 0.8-1.0L/Ha	Annual grasses(wheat & Barley)
LANCELOT 450WG	<i>Aminopyralid 300g/kg + Florasulam 150g/kg</i>	Post Emergence: 30-33g/Ha	Post emergence broad leaf control
LINAGAN 50 WP	<i>Linuron 500g/Kg</i>	Pre and Post Emergence: 2.0Kg/Ha	Control numerous annual broad leaved and grass weeds in maize, beans, carrots and potatoes
PALLAS 45 OD	<i>Pyroxulam 45g/L</i>	Post Emergence: 0.5L/Ha	Broad leaves and grass weeds (wheat)
PANGA 480 SL	<i>Glyphosate 360g/L</i>	Sedge; Foliar spray: 6.0L/Ha Perennial weeds; Foliar spray: 3.0L/Ha Annual weeds; Foliar spray 2L/Ha	Non-Selective, Sedge,Perennial weeds, Annual weeds
PARIMAZE 10 SL	<i>Imazethapyr 100g/L</i>	Early Post Emergence: 1L/Ha	Broad leaves and grass weeds (common field beans)
ROUND UP 360	<i>Glyphosate 360g/L( 441g/L potassium salt)</i>	Sedge; foliar spray 6L/Ha Perennial weeds; Foliar spray: 3.0L/Ha Annual weeds; Foliar spray 2L/Ha	Non-Selective, Sedge,Perennial weeds, Annual weeds
SIGMA COMBI 50 SC	<i>Acetalachlor 250g/L+Atrazine 250g/L</i>	Pre Emergence: 3.0L/Ha	For broad leaf and grass weed in maize
SINE 4D 720 SL	<i>2,4 D-Amine 720g/L</i>	Post Emergence: 1.0-3.0L/Ha	For broad leaf and on wheat and maize





## NEW NOVEL HERBICIDES



**MAXIMUS 537.5 SE** Terbuthylazine  
125g/L +Mesotrione 37.5 g/L+Metolachlor  
375 g/L +150g/Kg Florasulam

A new selective pre- and post- emergence herbicide for the control of grasses and broadleaved weeds in maize.

- One-pass, season-long weed management.
- Good crop selectivity.
- Broad Spectrum of control of tough broad-leaved and grass weeds.
- Unique Chemistry.
- Resistance management.



**SIGMA COMBI 500 SC** Acetochlor 250g/L+  
Atrazine 250g/L

A highly systemic pre emergence herbicide for the control of grass weeds and broad leaved weeds in maize

- For early weed control
- Effective against both broad leafed and grass weeds in maize and sugarcane
- Prolonged weed control
- Has no negative effect on soil and there is no restriction on the next crop



**CLODIGAN 240 EC** Clodinafop-Propargyl 240g/L

A post-emergence herbicide for control of annual grass weeds in wheat.

- Excellent weed control for both broad leaved and grass weeds
- Safe on the crops
- Weed controlled at the most critical crop stage

“  
Don't let  
weeds grow  
around your  
dreams

”



# PLANT NUTRITION

Plant nutrition refers to the need for basic chemical elements for plant growth and the interrelated steps by which a living organism assimilates food and uses it for growth and replacement of tissue.

What are fertilizers?

Think of fertilizers as plant food. Fertilizers are combination of the nutrients that plants must have to grow, in a form they can use.

These plant nutrients can be supplied through organic fertilizers such

as plant residues or livestock manure, or mineral fertilizers, which are chemically processed to meet crop needs.

A deficiency in any nutrient whether primary, secondary or micro-nutrients affects the yields directly.

*Amiran Kenya provides the best nutritional management solutions to help in crop enhancement ensuring crops grown reach their full potential.*



## PRIMARY NUTRIENTS

Are major macro elements often formulated as Nitrogen (N), Phosphorus (P) and Potassium (K), compounds or blends.



## SECONDARY NUTRIENTS

(Sulphur, Calcium and Magnesium are essential macro elements after the primary elements.



## MICRONUTRIENTS

Are as important as other macro elements although needed in small quantities. Micro nutrients include Boron, Chlorine, Copper, Iron, Manganese, Molybdenum, Nickel and Zinc.

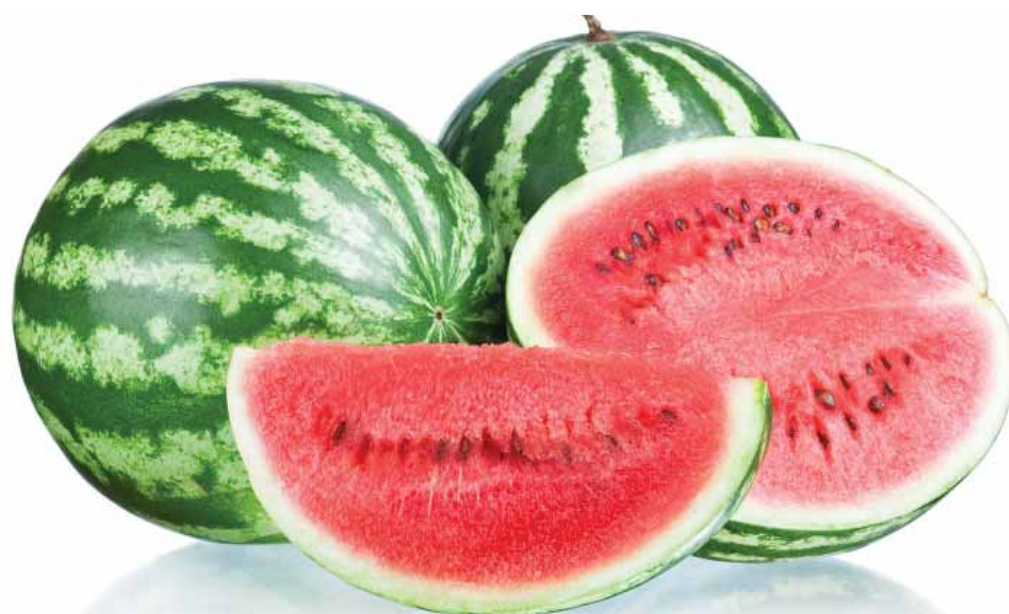


## BIOSTIMULANTS/SYNERGIZERS

PRODUCT	SPECIFICATIONS	RATE OF USE	REMARKS
BIOZYME	Natural plant extracts 78%Mg 0.1: S 0.4: Mn 0.1: Fe 0.4: Zn 0.3: Bo 0.3%	0.5L/Ha	Enhance fruiting
FOLTRON PLUS	N 5.6%, P <sub>2</sub> O <sub>5</sub> 19.5%, K <sub>2</sub> O 5%, Fe, Zn, Mg, Mn, Bo, Cu, Mo, Folcisteine	2L/Ha	Vegetative development
MAXI BOOST/PROMINENT	Mg 10.2g/L, EDTA Fe 5.7g/L, EDTA Mn 2.8g/L, EDTA Zn 1.7g/L, EDTA Cu 2.9g/L, Mo 0.04g/L, S 13.8g/L, Auxins 8.8mg/L, Cytokinins 0.025mg/L	Drenching: 1.5- 2.0L/Ha/fortnight Field: 2.5L/Ha	Unique combination of 80% cytokinins and auxins and 20% chelated micro nutrients
PILATUS	Fluvic acid 3.0%, Total amino acids 2.0%, Inositol 0.4%, Zinc 4.9%, Total OM 30.0%	2ml/L	Root development
TIVAG	GA3 4% EC	100ml/100L	Biostimulant
TRIAMIN PLUS	21% free amino acids with microelements	Foliar: 3.0-4.0lt/Ha	Biostimulant that promotes growth and ameliorates stress effects
TRIAMIN CaB	Calcium cheletad Amino acids with Boron	Foliar: 3.0-4.0L/Ha	Biostimulant that promotes growth and ameliorates stress effects

## SPECIAL NUTRITIONAL PRODUCTS

PRODUCT	SPECIFICATIONS	RATE OF USE	REMARKS
AMIRAN CALMAG	Ca + Mg + TE	Foliar: 2.0 - 4.0L/Ha	High Ca content for deficiency correction
AMIRAN FOLIAR	11:8:6 +0.2MgO + TE	Foliar: 2.0 - 4.0L/Ha	Balanced foliar fertilizer
BROAD HACTRE	60.0%Zn, 15.0%Cu, 10.0% Germination booster	Seed coating: 4L/Ton of seeds Foliar: 0.3 - 0.4 L/Ha at 3 - 4 leaf stage	High analysis Zinc and copper suspension with germination booster to ensure plants get healthy and vigorous start
ECOKSIL	164g/Kg (K) + 127g/Kg (Si)	1-2L/Ha	It improves plant cell structure and strength
INTROGEL CALCIUM	N 14%, Ca 13%, K2O 1.70%, Mg 2%, B 0.26%, Fe 0.076%, Cu 0.031%, Mn 0.031%, Zn 0.076%, Mo 0.008%, Protein hydrolysate 10%	1-2L/Ha	Foliar and drip Ca supplementary feeding
INTROGEL SHOOT	N 20%, P 7.86%, K 10%, B 0.011%, Fe 0.033%, Cu 0.011%, Mn 0.011%, Zn(EDTA) 0.011%	1-2L/Ha	Foliar and drip Npk + Microelements supplementary feeding
GROWCAL MGB	17.0% Ca, 10.0%N, 4.0%Mg, 0.2%B (Heavy suspension)	Foliar: 2.0L/Ha	Foliar and drip Ca supplementary feeding
QUATRACOP	50% copper	Foliar: 0.35-0.1L/Ha	Flowable copper formulation for the correction of copper defeciencies maintenace in all crops
SUPER NITRO HUMIX	42% Microcapsulated Liquid Nitrogen + 3% Humic Acid	Foliar: 5-10L/Ha Drenching: 10-20L/Ha	Corrects Nitrogen deficiency and aids in absorption of nutrients
UREA PHOSPHATE	18%N, 44%P <sub>2</sub> O <sub>5</sub>	Top dressing: 100 - 130Kg/Ha Fertigation: 70 - 100 ppm	Top Dressing, Soluble fertilizer



## MICRO ELEMENTS

PRODUCT	CHELATING AGENT	SPECIFICATIONS	REMARKS
FOLIAREL		21%B <sub>2</sub> O <sub>5</sub>	Soluble Boron
HAMPIRON X55	HBED	6%Fe (5.5% ortho-ortho isomer)	Wide pH range (3.5-12)
LIBREL 13%Fe	EDTA	13%Fe	Foliar application For low pH < 6.0
LIBFER 6%Fe	EDDHA	6%Fe (4% ortho-ortho isomer)	Wide pH range (3-10)
LIBREL 7%Fe	DTPA	7%Fe	For pH < 7.5
MICROSOL B	EDTA	5%Fe, 2.5%Mn, 1.0%Zn, 0.75%Cu, 2.5%B, 0.035%Mo	All trace elements
MICROSOL IPJ	EDTA	5.7%Fe, 2.8%Mn, 2.3%Zn, 1.0%Cu, 1.9%B, 0.5%Mo	For soil less culture
SUPER BORON	Heavy suspension concentrate	15%B & 6.5%N	Supplies B
SUPER MANG 50	Heavy suspension concentrate	50% Liquid Mn, 6.9% N as urea	Supplies Mn & N
SUPER MOLY	Heavy suspension concentrate	25% Liquid Molybdenum, 11%P	Supplies Mo
SUPA TRACE	Organic acids	3.3%N, 1.6%Fe, 1.8% Zn, 1.4%Mg, 1.3%Mn, 0.6 Cu, 4.8%S, 0.6%B, 0.03%Mo	All trace elements
ZINC 70	Heavy suspension concentrate	70% Zn	Supplies Zn

## GREEN HOUSE GRADE FERTILIZERS (FOR FERTIGATION AND FOLIAR SPRAY)

PRODUCT	PRODUCT SPECS
CALCIUM NITRATE	15.5%N + 19%Ca
MAGNESIUM NITRATE	11.0%N + 9.5%Mg
MAGNESIUM SULPHATE	10%MgO% + 13%S
MAP	12%N + 61%P <sub>2</sub> O <sub>5</sub>
MKP	52%P <sub>2</sub> O <sub>5</sub> + 34.5%K <sub>2</sub> O
MULTI K	13%N + 46%K <sub>2</sub> O
MULTI npK	13%N + 2%P <sub>2</sub> O <sub>5</sub> + 44%K <sub>2</sub> O
MULTI-K pHAST	13%N + 46%K <sub>2</sub> O, Acidic KNO <sub>3</sub>
POLIFAST	20%P + 13%N, A starter fertilizer
POLYFEED(NPK - 15:30:15 + 2MgO + TE)	15N%30+ %P <sub>2</sub> O <sub>5</sub> 15+ %5K <sub>2</sub> O 2+MgO +TE; Starter
POLYFEED(NPK 2 + 18:9:27-MgO + TE)	18N%+9%P <sub>2</sub> O <sub>5</sub> % +27%K <sub>2</sub> O +2%MgO+TE; Finisher
POLYFEED(NPK -19:19:19 + 2MgO + TE)	19N%+19%P <sub>2</sub> O <sub>5</sub> % +19%K <sub>2</sub> O + 1%MgO +TE; Standard, suitable for all stages
POLYFEED(NPK 2 + 26:12:12-MgO + TE)	26N%+12%P <sub>2</sub> O <sub>5</sub> % +12%K <sub>2</sub> O +2%MgO +TE; Vegetative stage
POTASSIUM SULPHATE	50% K <sub>2</sub> O + 18%S

## BIORATIONAL PRODUCTS

PRODUCT	ACTIVE INGREDIENT	RATE OF USE	REMARKS
SUPALINK	Organic polyamines	Foliar spray: 200ml/100L(0.2%)	A powerful penetrant to be used with translaminar & systemic pesticides & to improve efficacy
	Organic polyamines	Injection into fertigation system: 200ml/100L(0.2%)	Cleans drip lines when used on routine basis
	Organic polyamines	Fertilizer/pesticide compatibility agent: 200ml/100L(0.2%)	Chelates the minerals and pesticides to prevent reaction and precipitation



MAP + CaNO<sub>3</sub>



MAP + CaNO<sub>3</sub> + Supalink



## FIELD GRADE FERTILIZERS

PRODUCT	PRODUCT SPECS
AGROMASTER	15-24-10+1.3MgO+10SO <sub>3</sub> +3.CaO+0.2B+0.2Zn 16-10-16+1.8MgO+14.2SO <sub>3</sub> +5CaO+0.2B+ 0.2Zn 24-6-12+1.4MgO+3.9CaO+11SO <sub>3</sub> +0.2B+0.2Zn 16-10-22+1MgO+8SO <sub>3</sub> +2.8CaO+0.2B+0.2Zn 25-5-10+1.7MgO+13.2SO <sub>3</sub> +4.6CaO+0.2B+ 0.2Zn
AMMONIUM SULPHATE	21%N+24%S
MAP	11 %N + 52%P <sub>2</sub> O <sub>5</sub>
MICROSTAR	12%N+43%P <sub>2</sub> O <sub>5</sub> +2%MgO+11%S+0.7%Zn
NPK-17:17:17	17%N+17%P <sub>2</sub> O <sub>5</sub> +17%K <sub>2</sub> O
SSP	18%P <sub>2</sub> O <sub>5</sub> + 18%Ca + 12%S
TIGER TRACE	7.5g/kg Manganese (Mn)7.0 g/kg Copper (Cu)10.0g/kg Iron (Fe)90.0g/kg Zinc (Zn)650 g/kg Sulphur (S)
TSP	46%P <sub>2</sub> O <sub>5</sub> +12%Ca+1%S
YARALIVA NITRABOR	15%N + 25.6 CaO + 0.3% B

## ADJUVANTS

PRODUCT	ACTIVE INGREDIENT	RATE OF USE	REMARKS
AMISIL	Polyalkyleneoxide modified Heptamethyl trisilixane 80%	Foliar: 0.2ml/L	Spreader/sticker for use on outdoor/indoor crops
BLADBUFF (BB5)	Acidifier, pH indicator, penetrating, spreading and wetting agents	Foliar: 40-50ml/100L	Acidifier, pH indicator for maintaining optimal pH on spray solution
BIOFILM	Glycoethers, fatty acids, spreading and wetting agents	Foliar: 15ml/100L	Spreader/sticker
BREAKTHRU	Siloxane copolymer 100% w/w	Foliar: 100-200ml/Ha	Spreader/sticker
PREV AM	Sodium Tetraborohydrate Decahydrate 0.99 w/v	Foliar: 2ml/L	Wetter / Penetrant
SUPAFILM	Glycoethers, fatty acids, spreading and wetting agents	Foliar: 15ml/100L	Spreader/sticker

## SOIL AMMENDMENT MATERIALS

PRODUCT	SPECIFICATIONS	MODE / RATE OF USE	REMARKS
AGRICULTURAL GYPSUM	83%CaSO <sub>4</sub> ·2H <sub>2</sub> O, 69.34%CaSO <sub>4</sub> , 10.17%SiO <sub>2</sub> , 40.63%SO <sub>3</sub>	0.5-1.5ton/Ha	To correct soil alkalinity by reducing the pH value of soil
AGRICULTURAL LIME	85%CaCO <sub>3</sub> , 10%MgCO <sub>3</sub>	0.5-1.5ton/Ha	To correct soil acidity by increasing the pH value of soil
AQUACLEAN ACF-SR	Soil Conditioner	1 -2L/Ha	Improves plant vigour.
DEKOMPAKT	Nitrogen (N) as nitrate 10%, Calcium (Ca) as Calcium nitrate 12.6% + Fulvic Acids (1.1%)	50L/Ha	To open up compacted soils/dispersal
CALCIPRILL	90.3% CaCO <sub>3</sub> (36% Ca)+ 3.3% MgCO <sub>3</sub> (1 % Mg)	To correct soil acidity by increasing the pH	125Kg/Ha
DOLMAX	Liquid organic fertilizer	0.5-1.5ton/Ha	Increase the pH value of soil
ECOGRL	High quality Lime with 99% of particles less than 38 microns	100-300Kg/Ha	Increase the pH value of soil
HUMIX SUPER	26% Humic Acid (as Potassium humate)	Drenching: 1.5-2.0L/Ha/Fortnight Field: 2.5L/Ha	Stimulates growth and soil structure
XILOTRON	Plant organic matters	10L/Ha split into two	Soil conditioner

## HORTICULTURAL DISINFECTANTS & CLEANING AGENTS

PRODUCT	ACTIVE INGREDIENT	MODE / RATE OF USE	REMARKS
ALL CLEAR EXTRA	Detergent/Sequenstrant/Suffactant	0.5L/100L	Spray tank cleaning agent
HCLON	Sodium hypochloride	0.16ml/L	Fungi, bacteria, viruses
T.O.G - 6	Stabilized Chlorine in Sodium Dichloro-isocyanurate 55%	1g in 11.4L H <sub>2</sub> O(50ppm)	All purpose disinfectant / Sanitizer

## HORTICULTURAL ACIDS

PRODUCT	COMPOSITION
NITRIC ACID	68%
PHOSPHORIC ACID	85%
SULPHURIC ACID	98%



# POST HARVEST SOLUTIONS

Post harvest is the final stage of production and any losses experienced at this point are more severe as they represent wastage of all resources involved during production.

There are two main functions of Post Harvest Management:

- To maintain the good quality of the harvested produce for the market
- To reduce the level of losses in weight and quality after harvest

Amiran understands that the instant a crop is removed from the ground, or separated from its parent plant, it begins to deteriorate so post harvest systems play a critical role in enhancing the competitiveness of cut flowers which by nature are highly perishable.

*The golden rule of Post Harvest Management is:  
QUALITY CANNOT BE IMPROVED AFTER HARVEST BUT MAINTAINED!*

**As a result the shelf/storage life of the produce is extended.**



## CAUSES OF POST HARVEST LOSSES:

- Improper harvesting
- Poor handling of the produce from the field through to the market place
- Inappropriate container and use of packaging material
- Poor storage conditions
- Poor transportation and distribution system
- Lack of adequate and appropriate storage facilities

## POST HARVEST SOLUTIONS

PRODUCT	ACTIVE INGREDIENT	MODE / RATE OF USE	REMARKS
DIPNOY	<i>Imidazole + Acrylic Co-polymer</i>	3 - 5ml/ 1L of water	Post harvest dipping solution
PRENOY	<i>Nutrients, Biocids + AI</i>	2ml/1L of water	Post harvest hydration solution for short and long storage of roses
POLINOY	<i>Modified atmospheric packaging bags</i>	160 - 200 stems/bag	Special packaging bags for short and long storage of roses
T.O.G.-6	<i>Stabilized Chlorine in Sodium Dichloro-iso-cyanurate 55%</i>	1g in 11.4L of water (50ppm)	Post harvest solution and all purpose disinfectant/Sanitizer
T.O.G. - 3	<i>TBZ, 8 Hydroxyquinoline, QAC</i>	1g in 11.4L of water (50ppm)	Gypsophilla opening solution (In combination with STS)
 T.O.G. - 10	<i>Aluminium sulphate, Quaternary amonium, Citric acid and surfacants</i>	1ml in 1L of water	Post-harvest hydration solution for cut roses and hydrangea flowers
T.O.G.-30	<i>8 Hydroxyquinoline, Acids and stabilizers</i>	15-20ml/10L (0.15-0.20 %)	Post harvest pre treatment for roses and summers (In combination with STS)
T.O.G.-75	<i>Stabilized Silver thiosulphate (8ppm Silver)</i>	30-50ml/10L of water (0.3-0.5%)	For use on ethylene sensitive flowers
T.O.G.-GALILEO	<i>Bacterial growth inhibitor, Acids and surfacants</i>	1ml/1L of water	Hydration solution for roses, gerbera and chrysanthemum
T.O.G.-GALILEO SOFT	<i>Bacterial growth inhibitor, Acids and surfacants</i>	1ml/1L of water	Hydration solution for roses, gerbera and chrysanthemum
T.O.G.-GALILEO HARD	<i>Bacterial growth inhibitor, Acids and surfacants</i>	1ml/1L of water	Hydration solution for roses, gerbera and chrysanthemum
LONG LIFE	<i>Bacterial growth inhibitor, Acids and surfacants + sugar (dextrose)</i>	5g sachet/0.5L vase soln.	End user product

## ROOTING HORMONES

PRODUCT	ACTIVE INGREDIENT	REMARKS
HOMORIL - 4	<i>IBA 0.4% powder</i>	Semi-hard cuttings
HOMORIL - 6	<i>IBA 0.6% powder</i>	Semi-hard cuttings
HOMORIL - 8	<i>IBA 0.8% powder</i>	Hard cuttings

### DIPNOY

#### New Amirans Post Harvest Dipping Solution

- Long lasting preservation.



# AMIRAN BIO SOLUTIONS

KEPHIS has been actively involved in the monitoring of MRL's, insects and diseases on fresh produce. As a result, many growers have suffered huge losses due to their produce being intercepted.

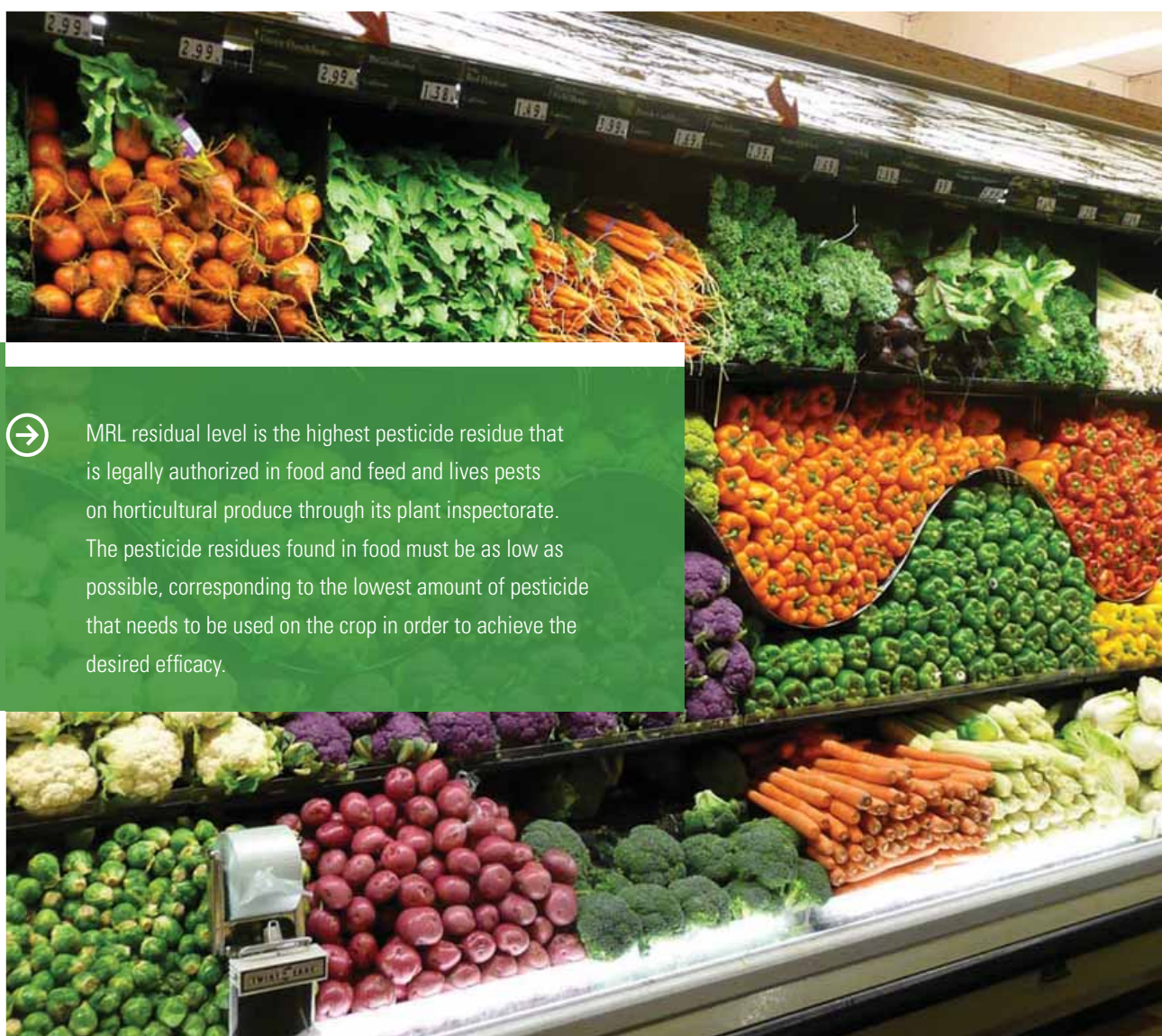
The growers are in a quandary of producing high quality produce to meet ever sensitive market, with very few options of pesticides. Amiran with attention to the farmer's needs and respect to the consumer, offers complete range of products for effective crop protection with regard to environmentally sustainable, low MRL, IPM and Organic farming compatible products. This way Amiran helps you to protect your crop and meet the demands of the dynamic markets.

The yield of horticultural crops can be severely reduced as a result of infestation or infection by pests. In order to protect crops before and

after harvest, plant protection products are used.

A possible consequence of plant protection products use may be the presence of residues in the treated products. EU countries which are the Kenya's major buyers of horticultural produce have set up stringent MRL's levels in order to protect consumers and farmers from exposure to high levels of pesticides residues in food and feeds.

MRL residual level is the highest pesticide residue that is legally authorized in food and feed and lives pests on horticultural produce through its plant inspectorate. The pesticide residues found in food must be as low as possible, corresponding to the lowest amount of pesticide that needs to be used on the crop in order to achieve the desired efficacy.



MRL residual level is the highest pesticide residue that is legally authorized in food and feed and lives pests on horticultural produce through its plant inspectorate. The pesticide residues found in food must be as low as possible, corresponding to the lowest amount of pesticide that needs to be used on the crop in order to achieve the desired efficacy.



## BIOLOGICAL CONTROL OF MITES

PRODUCT	ACTIVE INGREDIENT	TARGET	MODE / RATE OF USE
LEVO 2.4 SL	<i>Prosular Oxymatrine 2.4%</i>	Botanical Insecticide	20-30ml/100lt
PREV AM	<i>Sodium Tetraborohydrate Decahydrate 0.99 w/v</i>	Foliar spray: 2ml/L	Contact
SAF T SIDE 800EC	<i>Parrafinic oil 80%</i>	Mineral Oil	3-4lts/Ha

## BIOLOGICAL CONTROL OF WHITE FLIES

PRODUCT	ACTIVE INGREDIENT	CATEGORY	MODE / RATE OF USE
BOTANIGUARD ES	<i>Beauveria Bassiana (GHA Strain)</i>	Botanical Insecticide	100-200ml/100lt
LEVO 2.4 SL	<i>Prosular Oxymatrine 2.4%</i>	Botanical Insecticide	20-30ml/100lt
NEEM RAJ SUPER-3000	<i>Azadirachtin 0.3%EC</i>	Botanical Insecticide	0.5-1lts/Ha-Spray 4Lts/Ha-Drench
PREV AM	<i>Sodium Tetraborohydrate Decahydrate 0.99 w/v</i>	Foliar spray: 2ml/L	Contact
SAF T SIDE 800EC	<i>Parrafinic oil 80%</i>	Mineral Oil	3-4lts/Ha

## BIOLOGICAL CONTROL OF APHIDS

PRODUCT	ACTIVE INGREDIENT	CATEGORY	MODE / RATE OF USE
BOTANIGUARD ES	<i>Beauveria Bassiana (GHA Strain)</i>	Botanical Insecticide	100-200ml/100lt
LEVO 2.4 SL	<i>Prosular Oxymatrine 2.4%</i>	Botanical Insecticide	20-30ml/100lt
NEEM RAJ SUPER-3000	<i>Azadirachtin 0.3%EC</i>	Botanical Insecticide	0.5-1lts/Ha-Spray 4Lts/Ha-Drench
PACYLOS 18 WP	<i>Paecilomyces fumosoroseus strain FE9901</i>	Botanical Insecticide	1-2Kg/Ha
PREV AM	<i>Sodium Tetraborohydrate Decahydrate 0.99 w/v</i>	Foliar spray: 2ml/L	Contact
SAF T SIDE 800EC	<i>Parrafinic oil 80%</i>	Mineral Oil	3-4lts/Ha

## BIOLOGICAL SOIL AMMENDMENT/CONDITIONERS

PRODUCT	ACTIVE INGREDIENT	TARGET	MODE / RATE OF USE
AMIGUARD	<i>Organic Matter 35.7% extracted that are plant based</i>	Soil Amendment	10lts/Ha
DISPERSAL	<i>Calcium oxide(CaO)-17.5%,MgO-0.7%, Polyhydroxycarboxylic acid and carbohydrates.</i>	Corrector of saline-sodic soils	Initial application of 12l/Ha followed by 10l/Ha every month
FERTIGOLD	<i>Organic Matter 60-80%, Organic Carbon 30-40% CA, Mg, S + TE</i>	Organic Fertilizer that contain neem actives.	1.2-2MT/Ha or Half a kg per running metre
PHYTOPROTECT	<i>Sesamine Oil</i>	Soil Conditioning	10-15lts/Ha

## AMINO ACIDS/BIOSTIMULANTS

PRODUCT	ACTIVE INGREDIENT	TARGET	REMARKS	RATE OF USE
BIOZYME TS	<i>Natural plant extracts</i>	Biostimulant	Seed cane treatment	0.4-0.5L/Ha
BIOZYME TF	<i>Natural plant extracts 78%,Mg 0.1%,S 0.4%, Mn 0.1%,Fe 0.4%, Zn 0.3%B 0.3%</i>	Biostimulant	Enhancing of stem elongation, shooting, Flowering,fruit set and Increased quality of fruits.	0.5lt-1lt/Ha
FOLTRON PLUS	<i>N 5.6%,P 19.5%,K 5%,Fe,Zn,B,Mg, Mn,Cu, Folcisteine</i>	Foliar fertilizer	Improved vegetative growth of plants	2lt/Ha
MAXIBOOST/PROMINENT	<i>Mg 10.2g/L, EDTA Fe 5.7g/L, EDTA Mn 2.8g/L, EDTA Zn 1.7g/L, EDTA Cu 2.9g/L, Mo 0.04g/L, S 13.8g/L, Auxins 8.8mg/L, Cytokinins 0.025mg/L</i>	Biostimulant	Boosts root development and other vital plant functions; Improved growth and nutrient uptake; Ideal for relief of stress conditions	Foliar spray: 2L/Ha Soil Drench: 4L/Ha
PILATUS	<i>Fulvic acid 3%,Total amino acids 2%, Inositol 0.4%,Zinc 4.9%, Total organic matter 30%</i>	Biostimulant	Root development	2lt/Ha
TRIAMIN	<i>Free amino acids 12.75%,Peptides 12.5%, Organic matter 29.5% and trace elements.</i>	Aminoacids based Fertilizer	Ameriolates stress effects.	2.0-4.0L/Ha
TRIAMIN CaB	<i>Free Amino acids 9.2%,CaO 9.2%,B 0.23%, Total Nitrogen 13%</i>	Aminoacids based Fertilizer	Promotes growth.Ameriolates stress effects. Corrects calcium deficiency.	3-4lts/Ha-Foliar

# AMIRAN BIOLOGICAL SOLUTIONS



**TARSUS** Manganese (Mn) 2% w/w (2.2% w/v)

## The Immune booster against insects

- Induces reinforcement to plant immunity to responses in natural way to control whiteflies
- Derived from natural vegetable extracts
- Has allelopathic substances with enzymes that are lethal to whiteflies
- Insect dies in a short time after exposure
- Contact action



**ECOKSIL** Potassium (K) 164g/Kg + Silicon (Si) 127g/Kg

## For use on vegetables, fruits, nuts, vine crops, broadacre, flowers and turf

- Amplifies plant defence to fungal infection
- Strengthens and protects plants from the inside out
- Reduces the incidence & severity of fungal attack under low & high disease pressure
- Reduces crop logging



**PACYLOS 18 WP** Paecilomyces Fumosoroseus FE9901

## A New Long lasting Bio-insecticide for control of whiteflies, thrips and aphids

- High efficacy
- Safe to beneficials
- Targets eggs, larvae, pupae of whiteflies (not adulticide)
- Ideal tool for resistance management



**KOBE 1.2 SL** Chrysophanol parietien 1.2%

## A novel bio fungicide based on natural plant extracts that activates the plant immunity (SAR & ISR) against powdery mildew

- A broad spectrum of control
- High Efficacy
- Compatible with other commonly used pesticides
- An excellent IPM program compliance product



# KEKKILÄ PROFESSIONAL GROWING MEDIA



Kekkilä Professional growing media solutions for plants are made of carefully selected raw materials, ensuring outstanding quality in every bale.

It's benefits include:

- Properly aerated to ensure proper root development

- The media is free from fungal spores and bacteria
- Increases the germination percentage rate

Plants for propagation include:

*All flowers, all vegetables, all herbs, pot plants, forest and nursery stock.*



# TOTAL DESTRUCTION OF **ARMY WORMS**

WITH **AMIRAN'S** COMPREHENSIVE SOLUTION



**PYRINEX QUICK**

**PROVE**

**INDOX**

**RADIANT**

*For the full control of Fall Army Worms and to avoid resistance alternate the products.*





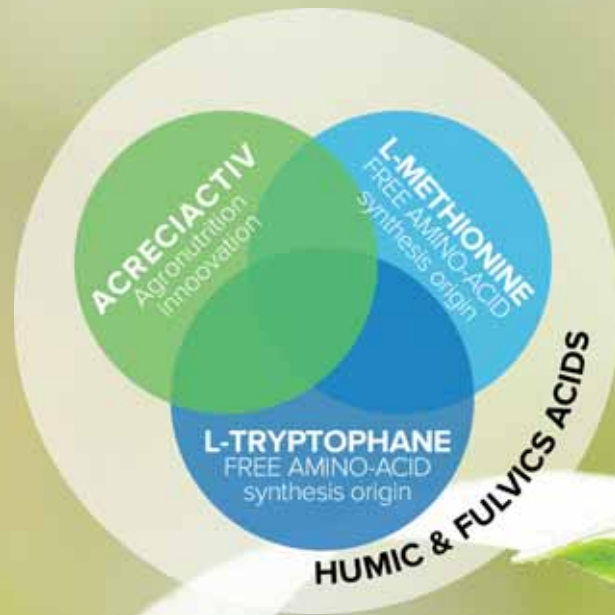
# PLASTIC MULCH

AVAILABLE IN: WHITE/BLACK & SILVER/BLACK





# ACRECIO



Acrecio is a unique association of endogenous activators.  
The unique root activator is made up of 4 active ingredients:

- Pure L-Tryptophan
- Pure L-Methionine
- Acreciactiv : natural stimulator for roots created by the Agronutrition's research
- Humic & Fulvic acids

# NOTES

A series of horizontal dotted lines for writing notes.





Old Airport North Rd. - Embakasi  
P.O. Box 30327 - 00100, Nrb, Kenya  
Tel: +254 (0) 719 095 000  
Email: [pr@amirankenya.com](mailto:pr@amirankenya.com)

**A member of the Belton Group of Companies**

 Join AmiranK on Facebook

 @amiran\_kenya



Call us on our toll free number  
**0800 720720**



Scan for our website