

# BMAT

BIOMEDICAL ADMISSIONS TEST

## An introduction to the BioMedical Admissions Test (BMAT)

[admissionstesting.org/bmat](https://admissionstesting.org/bmat)



# Why do universities use BMAT?

**BMAT**  
BIOMEDICAL ADMISSIONS TEST

Gives the university  
one piece of  
information about  
all applicants

Helps identify  
whether you have  
the skills to  
succeed on your  
chosen course

Just one part of  
the application  
process

Visit university  
websites to find  
out how they use  
BMAT results



# Which UK universities/courses require BMAT?

Universities	Courses
Brighton and Sussex Medical School	A100 Medicine
Imperial College London	A100 Medicine
Lancaster University	A100 Medicine & Surgery A104 Medicine & Surgery with a Gateway Year
University College London	A100 Medicine
University of Cambridge	A100 Medicine
University of Leeds	A100 Medicine A101 Gateway Year to Medicine A200 Dentistry
University of Oxford	A100 Medicine BC98 Biomedical Sciences A101 Graduate Medicine
<b><u>'Overseas for fees' applicants only</u></b> Keele University	A100 Medicine
<b><u>International applicants only</u></b> University of Manchester Medical School	A106 Medicine A104 Medicine (with foundation year)

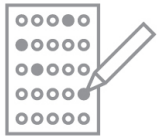
# What's in BMAT?

**BMAT**  
BIOMEDICAL ADMISSIONS TEST

## 1 Thinking Skills



60 minutes



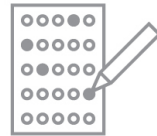
32 multiple-choice  
questions

Tests: **problem solving and  
critical thinking**

## 2 Scientific Knowledge and Applications



30 minutes



27 multiple-choice  
questions

Tests: **ability to apply  
knowledge: Biology, Chemistry,  
Physics and Mathematics**

## 3 Writing Task



30 minutes



1 short essay  
question

Tests: **ability to organise and  
effectively communicate ideas  
in writing**

# Section 1 Thinking Skills

## Problem Solving

Janet's mother has sent her to the greengrocer to buy oranges. Janet's mother knows the oranges were 12p each yesterday and gave Janet the exact money to buy a certain number. When Janet gets there she finds there is a special offer: if you buy 8 or more, the price of all oranges bought is reduced by 2p each. She finds she can now buy 2 more oranges than her mother thought with the money given.

How many can she buy?

- A** 8
- B** 10
- C** 12
- D** 18
- E** 20

# Section 1 Thinking Skills

## Critical Thinking

Peat is organic matter which develops in wetland areas. It is the ideal growing medium for plants, and there is a tremendous demand for it from gardeners, both amateur and professional. But only three per cent of the earth's land surface is covered in peatland, and continued harvesting of peat will endanger these unique wetland habitats. Peat harvesting should be stopped immediately and gardeners should be encouraged to use an alternative.

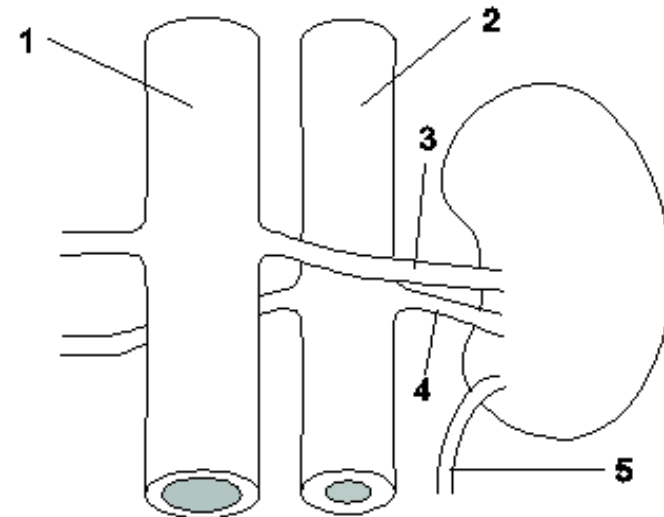
Which of the following best expresses the main conclusion of the argument above?

- A** Only three per cent of the land on our planet is covered in peatland.
- B** Taking too much peat will destroy the unique wetland areas in which it develops.
- C** Peat cannot develop except in wetland areas.
- D** No more peat should be extracted and a different growing medium for plants should be promoted.
- E** Peat is a very popular growing medium used by amateur gardeners and professional growers.

## Section 2 Scientific Knowledge and Applications

The diagram shows a kidney and its associated vessels from a healthy individual.  
Which row correctly identifies the vessels along with the concentration of urea they contain?

	<i>lowest concentration of urea</i>	<i>highest concentration of urea</i>
<b>A</b>	1 is the aorta	2 is the vena cava
<b>B</b>	1 is the vena cava	2 is the aorta
<b>C</b>	3 is the renal artery	5 is the urethra
<b>D</b>	3 is the renal vein	5 is the ureter
<b>E</b>	4 is the renal vein	5 is the ureter
<b>F</b>	4 is the renal artery	5 is the urethra



## Section 3 Writing Task

**The health care profession is wrong to treat ageing as if it were a disease.**

What do you understand by this statement? Argue that it is not wrong to treat the effects of ageing as if they were a disease. To what extent do you agree with the statement?

- ▶ You have a single side of A4 to write on.
- ▶ The essay is scored on the basis of the quality of the content in the response and on the quality of the English used.



## Two BMAT test dates in 2020



**Registration opens:**  
22 June

**Registration closes:**  
9 August

**Results:**  
25 September



**Registration opens:**  
1 September

**Registration closes:**  
Standard fee 1 October  
Late fee 15 October

**Results:**  
27 November

Oxford will  
only accept results  
from the November  
test

# Five top tips to help you with BMAT preparation

- 1 Download the **BMAT preparation guide**.
- 2 Watch **videos of medical students** sharing their BMAT preparation tips.
- 3 Read the **BMAT test specification** to learn more about what to expect in the test.
- 4 Use the **Section 2 guide** to revise your science and maths if you need to.
- 5 Practise under test conditions with our **BMAT practice papers**.

We have made a small change to BMAT Section 1 this year – check the website for information.

Everything you need to prepare for the test is available, for free, on our website:  
[admissionstesting.org/bmat-preparation](https://admissionstesting.org/bmat-preparation)

---

# We advise against paid-for preparation courses

**We advise against paid-for preparation courses.**

**Our research shows no evidence of a link between commercial coaching courses and improved test performance.**

---

## FAQs

### **I get access arrangements for my school exams. What about for BMAT?**

- ▶ Access arrangements are offered in line with the arrangements you get for your school exams.
- ▶ If you require modified papers, please note there is an early deadline for requesting these.

### **I don't take A-level Physics. Am I at a disadvantage?**

- ▶ No, the science knowledge you need is GCSE level, and the questions focus on applying that knowledge.
- ▶ We have a free science revision guide covering all the topics you are expected to know.

### **I don't do any subjects where I write essays. Am I at a disadvantage?**

- ▶ No, BMAT Section 3 requires you to use skills you will already have gained from your school work (e.g. GCSE English) and have used in any report writing you may have done on your current courses.
- ▶ We also provide guidance, past papers and sample essays to help you prepare.

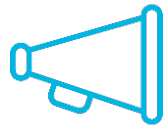
### **I can't afford the test. What can I do?**

- ▶ We offer a reimbursement of test fees to people who meet financial criteria showing they are unable to afford the test.

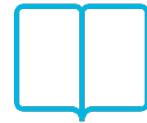
[Visit our website for further details and more FAQs](#)

## And remember...

**BMAT**  
BIOMEDICAL ADMISSIONS TEST



Don't panic!



Know what's in the test



Practise



Show your potential!

