

**motiveWave<sup>®</sup>**

---

analyze. trade. evolve.

MotiveWave<sup>™</sup>

Analyses

Version: 1.0

©2020 MotiveWave<sup>™</sup> Software

## Table of Contents

|       |  |    |
|-------|--|----|
| 1     | Introduction                           | 1  |
| 1.1   | Untitled Analyses                      | 1  |
| 1.1.1 | Switching Chart Instrument             | 1  |
| 1.1.2 | Saving Untitled Analyses               | 3  |
| 1.2   | Titled Analyses                        | 4  |
| 2     | Managing Analyses                      | 6  |
| 2.1   | Default Behavior                       | 6  |
| 2.2   | Creating a New Analysis                | 6  |
| 2.3   | Manage Analyses                        | 8  |
| 3     | Sharing Analyses                       | 10 |
| 3.1   | Import/Export Analyses                 | 10 |
| 3.2   | Analysis Packs                         | 11 |
| 3.2.1 | Exporting a Pack                       | 11 |
| 3.2.2 | Importing a Pack                       | 15 |
| 3.3   | Repository                             | 16 |
| 3.3.1 | Sharing using Google Drive or Drop Box | 17 |
| 3.3.2 | Folder Structure                       | 17 |
| 3.3.3 | Analysis Sources                       | 18 |

# 1 Introduction

Welcome to the MotiveWave™ Analyses Guide! If you are reading this document then you have already installed MotiveWave™ on your computer and you are ready to start using the application.

If you have not yet installed MotiveWave™ or registered for a trial on our website, please read the [Installation Guide](#) before continuing on with this document.

The Analyses feature is one of the most distinguishing and powerful features of MotiveWave™. An analysis is essentially a document that contains all of the studies and drawings (components) that have been added to a chart. There are two types of analyses:

1. **Untitled** – Untitled analyses are scoped to a chart and are discarded when the chart is explicitly closed (introduced in version 6.1).
2. **Titled** – Titled analyses have a name and are saved in the workspace. A titled analysis can be recalled later, even if the chart has been closed. It is also possible to open a titled analysis in multiple charts at the same time.

An analysis may contain the following types of information:

1. **Components (Drawings)** – this includes any component from the Components panel or a component drawn using a mouse tool. Examples include: Trend Lines, Elliott Waves, Commentary etc
2. **Studies** – Any studies that you have added to the chart (including price overlays and study graphs).
3. **Time/Price Guides** – Horizontal and vertical guides that have been added from the price or time axes.

## 1.1 Untitled Analyses

Version 6.1 of MotiveWave™ introduced the concept of untitled analyses. Untitled analyses are scoped to a chart (i.e. the contents of the chart are not shared between other charts of the same instrument). This is the behavior that you would typically see in other charting software. If your analysis is very simple or mostly based on studies, this is likely the desired behavior. These analyses are persisted with the chart when the workspace is shut down and re-opened, but unless explicitly saved the contents of the chart will be lost if the chart is closed.

### 1.1.1 Switching Chart Instrument

When a chart is displaying an untitled analysis, it will maintain a separate untitled analysis for every instrument that is displayed in that chart. Each of these analyses are persisted with the chart when the workspace is shutdown.

For example, open a chart for AAPL and add some drawings and/or studies to the chart. Change the instrument to GOOGL and add some drawings to that graph. If you switch back to AAPL the, drawings/studies that you added will still be there.



In the screen shot below, the instrument for the chart has been changed to GOOGL. Since this is the first time GOOGL has been displayed in the chart, a new untitled (blank) analysis will be created and displayed.

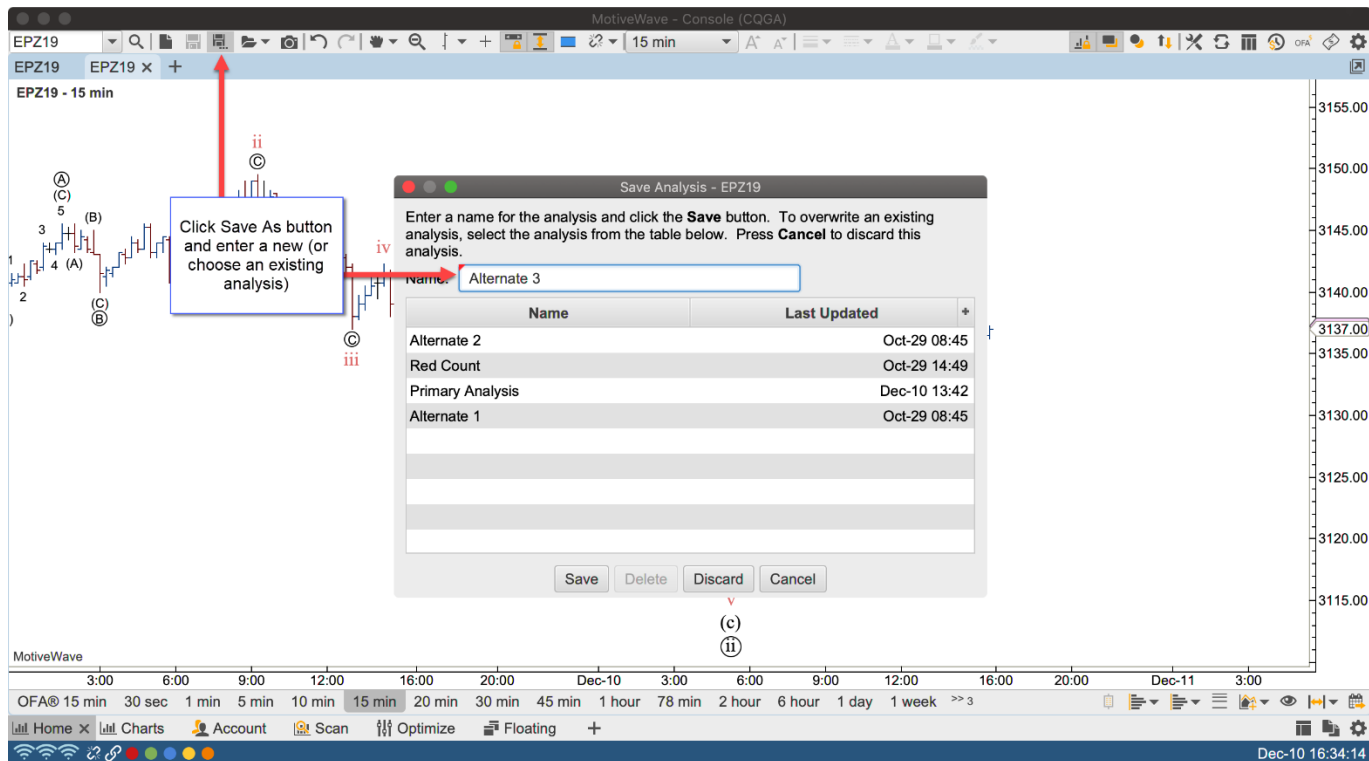


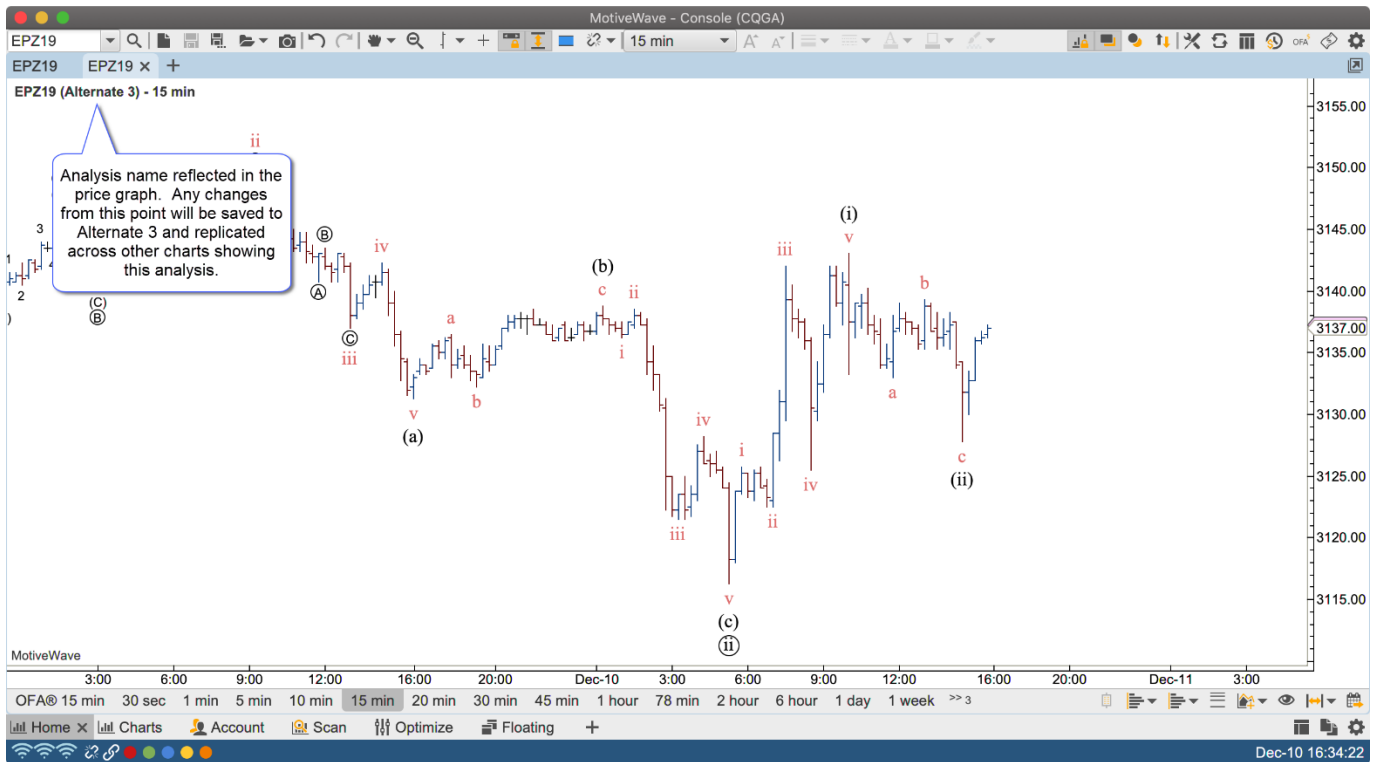
When the instrument for the chart is switched back to AAPL, the retained untitled analysis for AAPL will be displayed:



### 1.1.2 Saving Untitled Analyses

An untitled analysis can be converted into a titled analysis by clicking on the “Save As” button and assigning it a name.

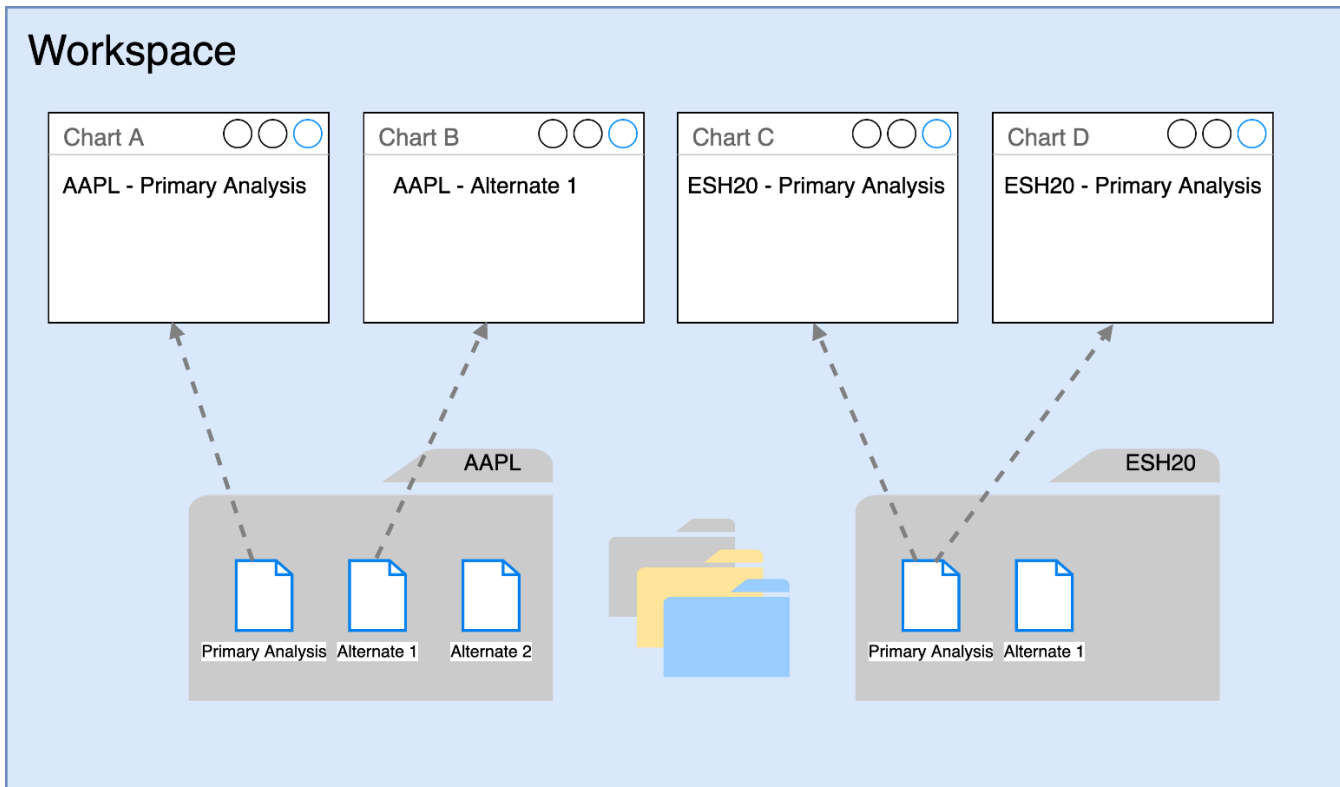




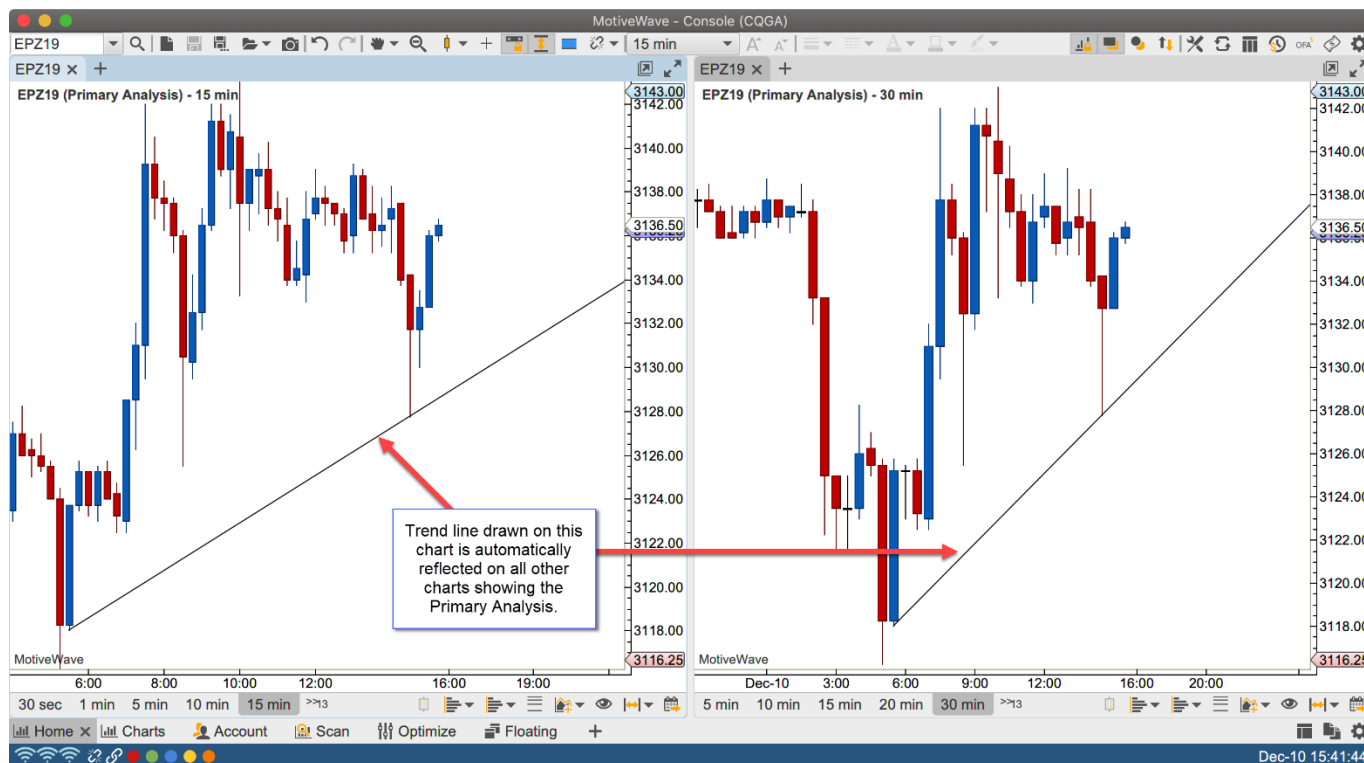
## 1.2 Titled Analyses

Titled analyses have a name and are stored separately from the chart. These analyses are stored in the workspace within a folder for each instrument. This allows the same name to be used across instruments.

What makes this feature unique is that the analysis is not tied to the chart (as in other charting software), but is stored independently. In most charting software the contents of the chart are lost when the chart is closed (unless explicitly saved). An analysis may also be opened concurrently in multiple charts. Changes in one chart will automatically be reflected in other charts that have the same analysis open (regardless of bar size).



The screen shot below shows how changes to one chart are automatically reflected on other charts. A trend line drawn in one chart will also be drawn in all other charts showing the same analysis (regardless of bar size).



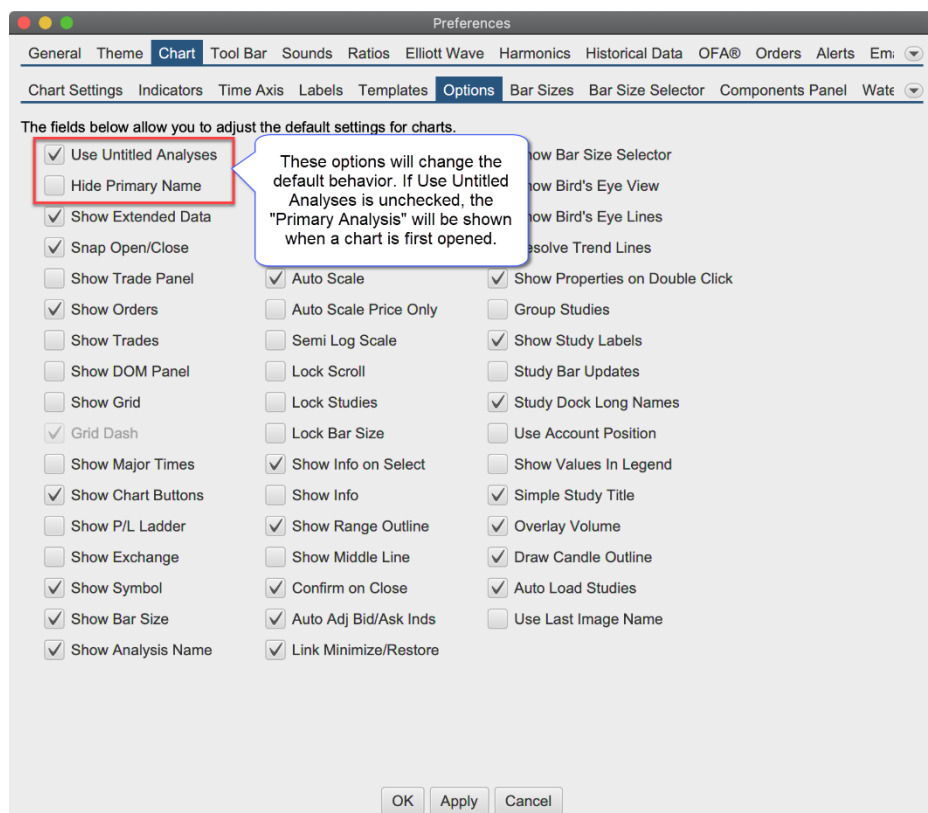
## 2 Managing Analyses

### 2.1 Default Behavior

The default behavior for a chart is to show a new untitled analysis. This behavior can be modified from the Preferences Dialog (Configure -> Preferences from the Console menu bar, see “Chart” -> “Options”).

Two options are of interest here:

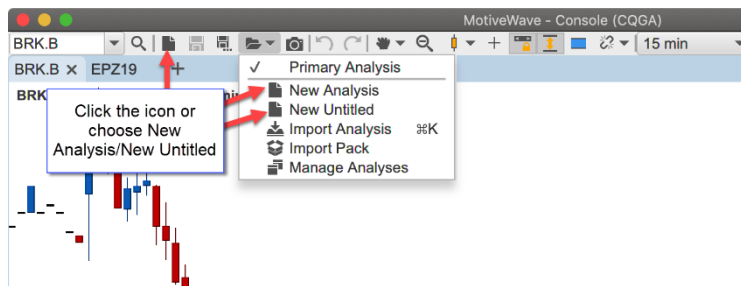
1. **Use Untitled Analyses** – The default behavior is to create a new untitled analysis whenever a chart is opened. Unchecking this option will cause the “Primary Analysis” to be displayed when a new chart is opened.
2. **Hide Primary Name** – If you are not using untitled analyses, you may want to hide the name of the “Primary Analysis” in the price graph. This was the default behavior before the introduction of untitled analyses in version 6.1



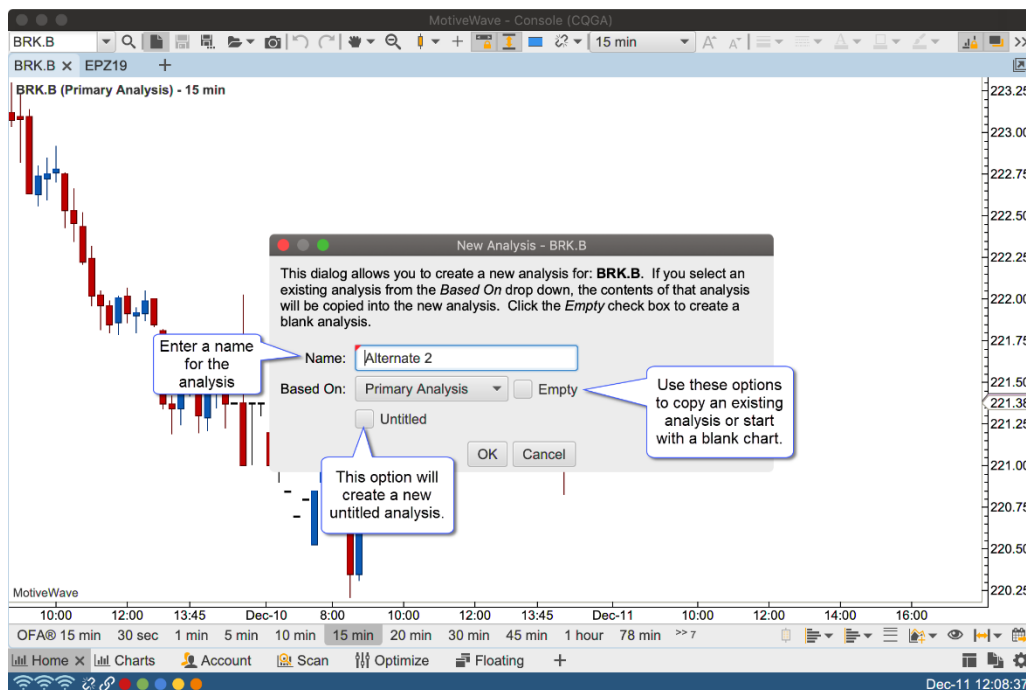
### 2.2 Creating a New Analysis

There are several shortcuts for creating a new analysis. By default two of these short cuts are available from the tool bar (see below). You can also choose File -> Chart -> New Analysis/New Untitled from the top menu bar.

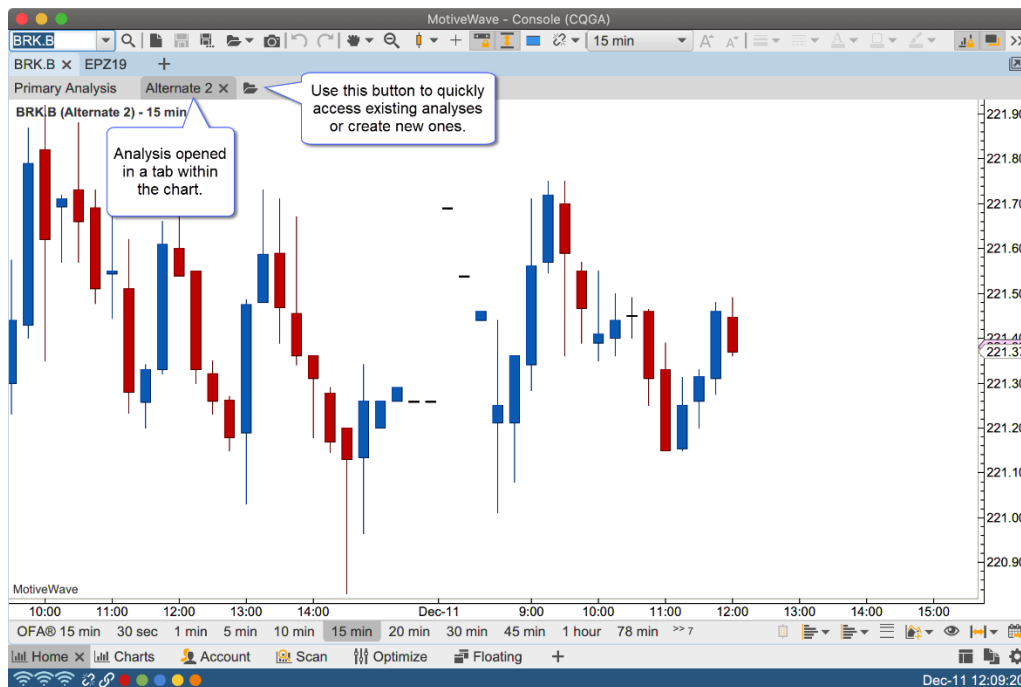




The New Analysis dialog will appear (shown below). A titled analysis requires a name. This name must be unique for the instrument, but the name can (and often is) re-used between instruments. Optionally, you start with a copy of an existing analysis (see Based On drop down). Click the “Empty” check box to start with a blank chart.

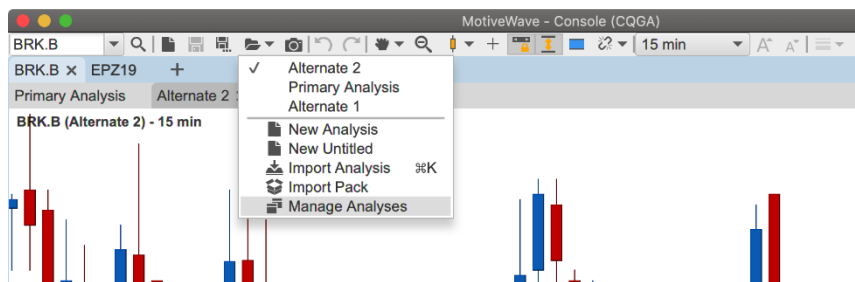


The new analysis will be opened in a subtab within the chart:

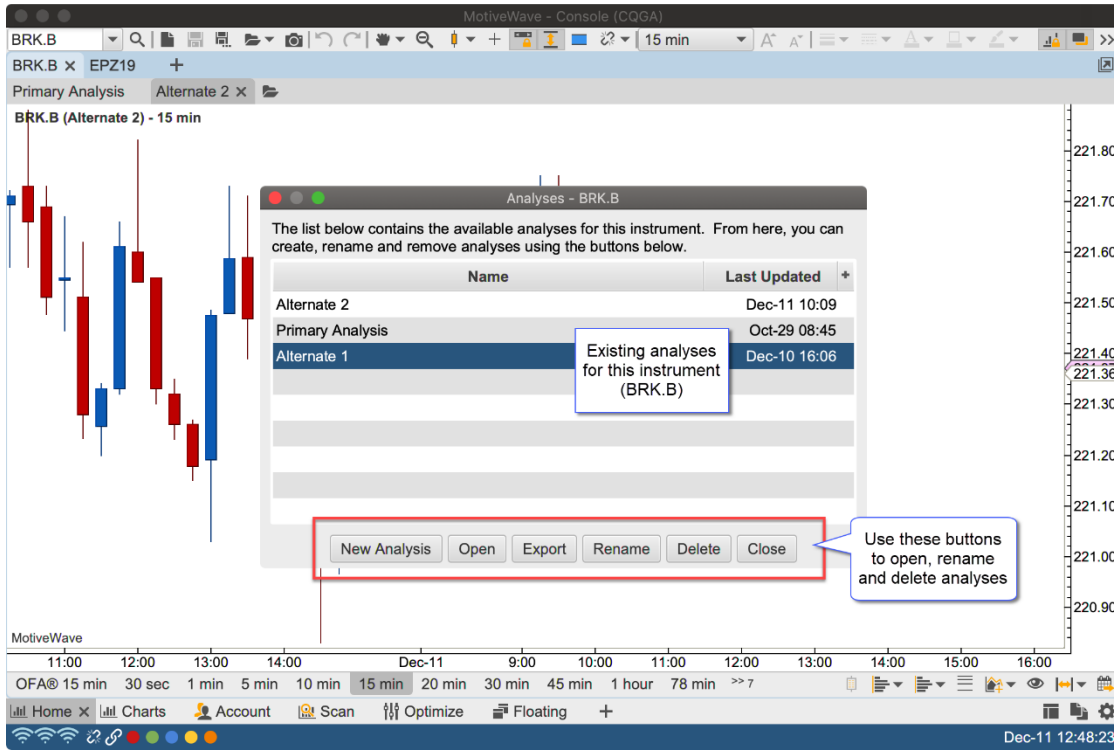


### 2.3 Manage Analyses

The shortcut for the Manage Analyses dialog can be found on the tool bar (under the folder drop down) or in the top menu bar (File -> Chart -> Manage Analyses).



From the Manage Analyses dialog you can see all of the analyses that belong to an instrument. Use the buttons at the bottom of the dialog to open, rename or delete them.



### 3 Sharing Analyses

There are several ways to share analyses with other users of MotiveWave™:

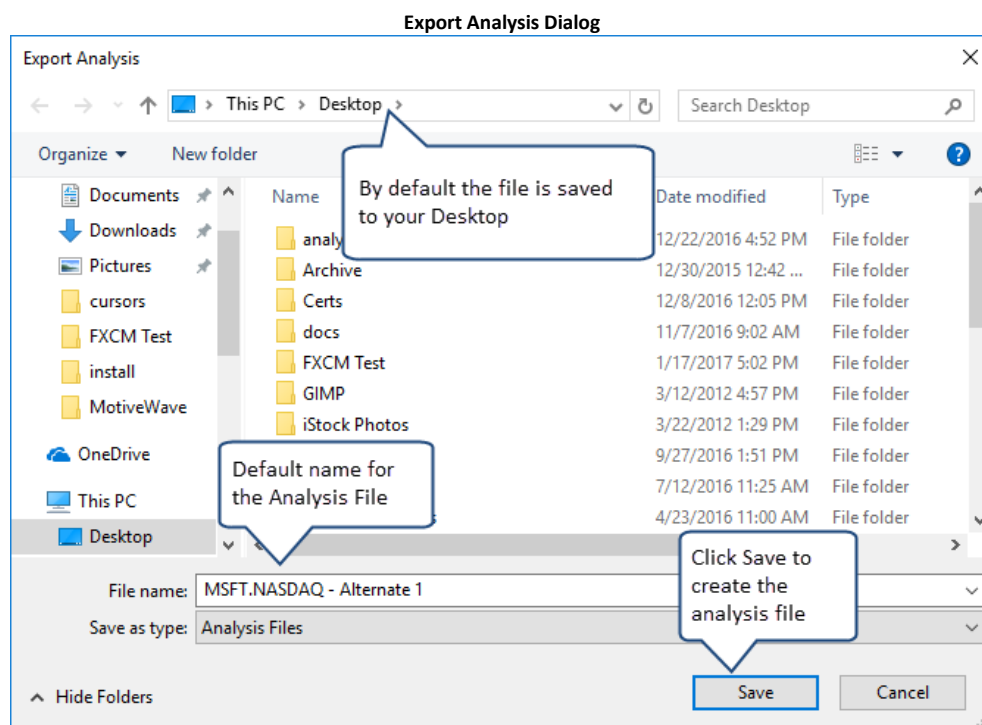
1. **Import/Export Analyses** – Individual analyses can be exported into files and shared with other users. These users would import the analyses into their copy of MotiveWave.
2. **Analysis Packs** – Similar to above, Analysis Packs contain groups of analyses stored in a single compressed file. This option is very convenient for sets of analyses that are regularly shared.
3. **Repository** – The repository feature allows you to store analyses outside of the workspace and share the files using a file sharing service such as DropBox™.

#### 3.1 Import/Export Analyses

Import and export are very valuable tools for sharing your analysis with another MotiveWave™ user.

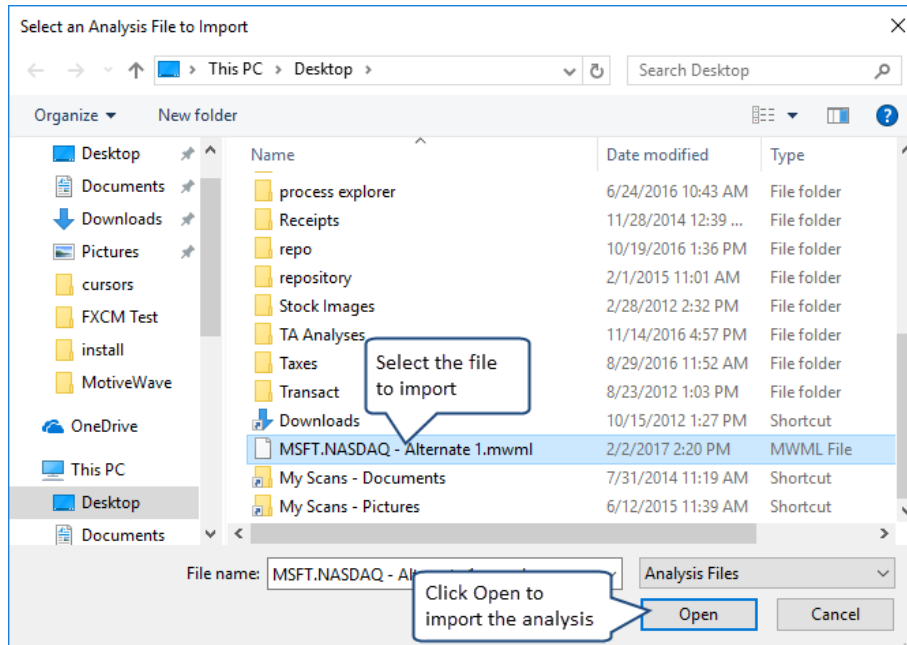
When you export an analysis file, the file will contain all of the information related to your analysis as well as information about the instrument. The exported file will be in JSON format and will have an extension of .mwml (MotiveWave Markup Language).

Choose *File -> Export Analysis* from the top menu bar (*File -> Chart -> Export Analysis* from the Console) to open the *Export Analysis* dialog. By default the analysis file will be saved on your computer desktop in the form <Symbol> – <Analysis Name>.mwml. You may change this name and location if you like. Click on the *Save* button to export the analysis to the selected file.



Similarly, to import an analysis file, choose *File -> Import Analysis* from the top menu bar (*File -> Chart -> Import Analysis* from the Console) to display the Import Analysis dialog. Locate the analysis file, select it and press the Open button. If the chart you are currently using has the same instrument as the imported analysis file, it will be opened in another analysis tab. If the instrument does not match the chart, a message dialog will be displayed indicating that the import was successful and how to open the imported file.

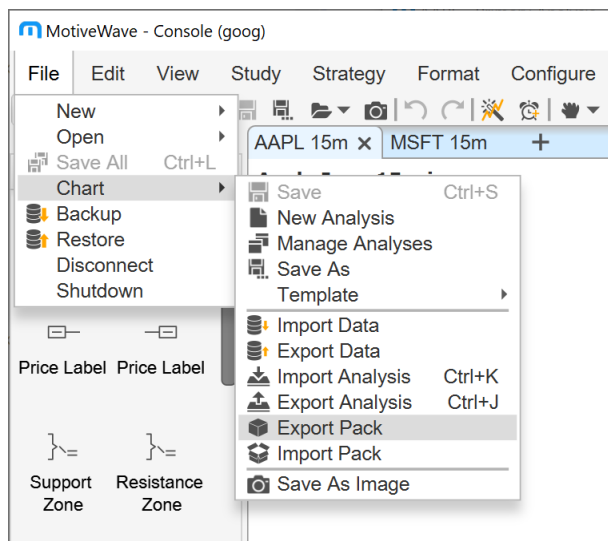
Import Analysis Dialog



### 3.2 Analysis Packs

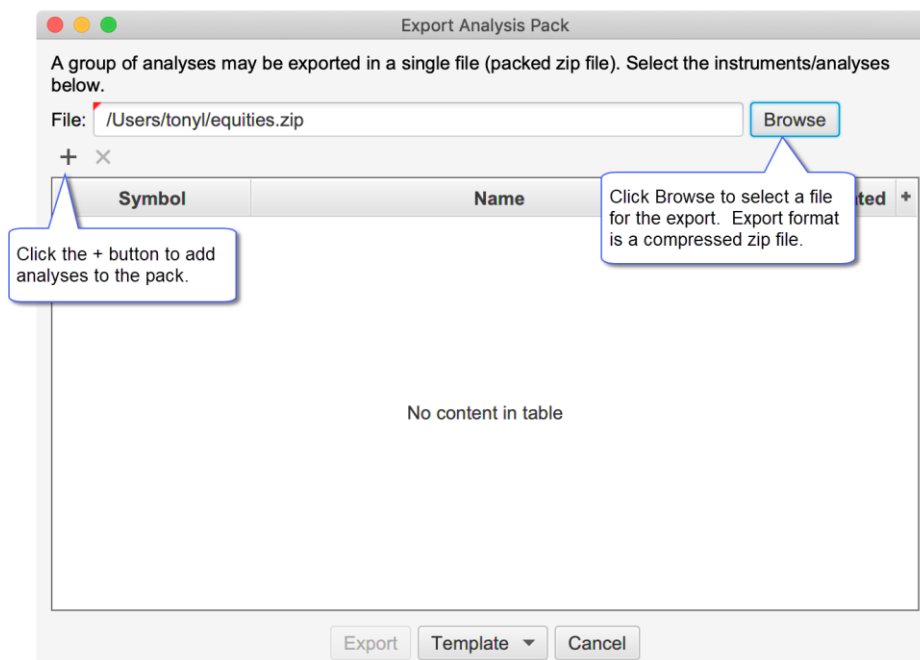
The Analysis Packs feature provides a more convenient method for sharing or transferring a set of analyses from one computer to another. This is similar to the import/export analysis feature but allows you to include multiple analyses across one or more instruments.

The Export/Import Pack options can be found under the **File -> Chart** menu of the Console menu bar:

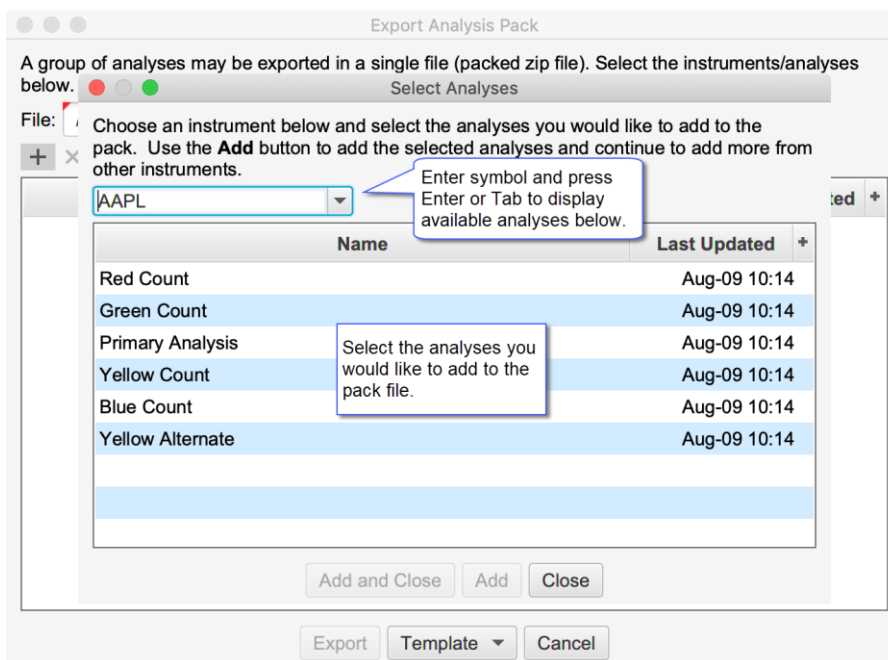


#### 3.2.1 Exporting a Pack

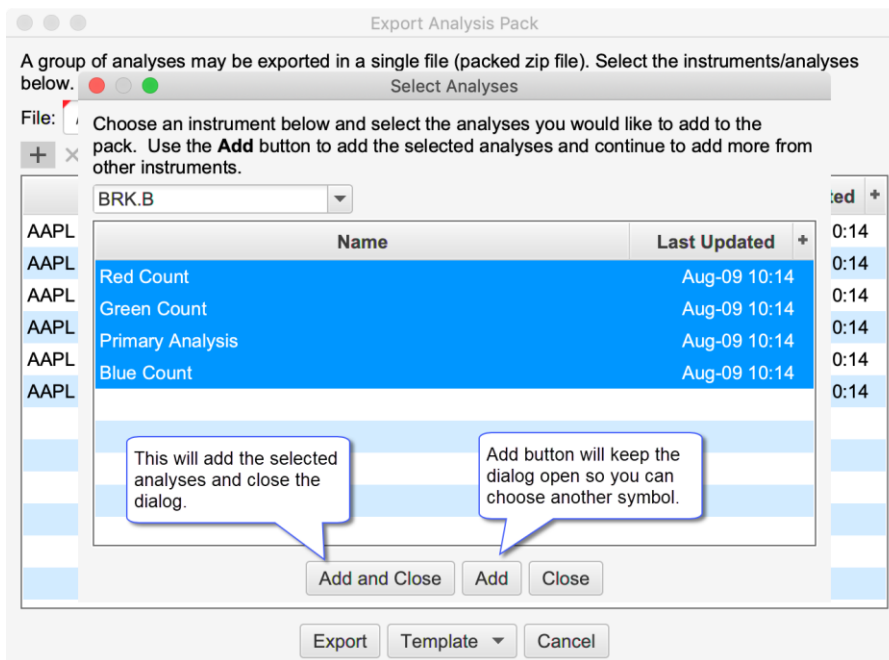
Use the **Export Analysis Pack** dialog (see below) to select a set of analyses and create a pack file. The pack file is a compressed zip file. Click on the + button to select analyses to add to the pack.



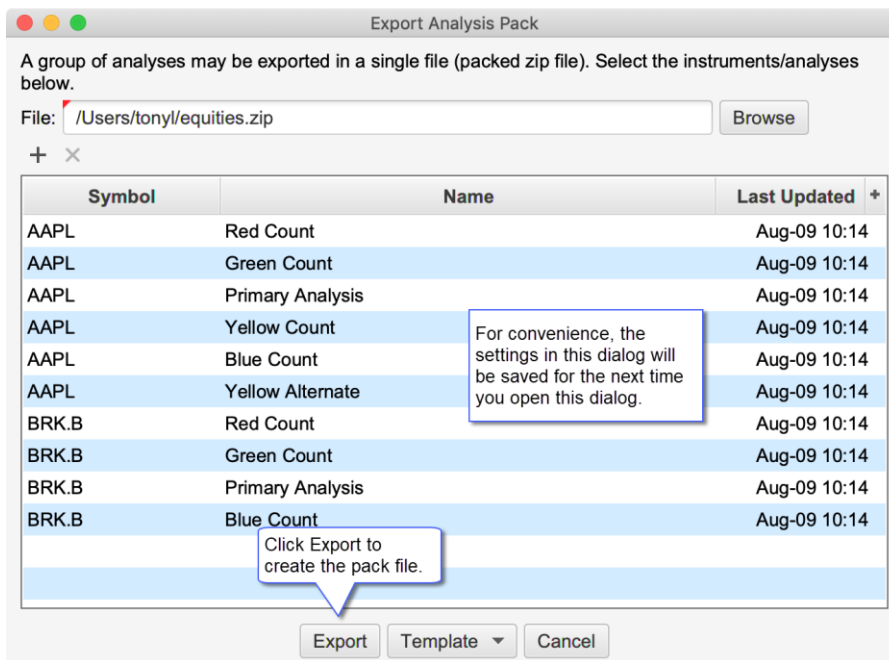
When you click on the + button the **Select Analyses** dialog will be displayed (see below). Type the symbol in the input box and press **Enter** or **Tab** to display the available analyses. Select the analyses you would like to include and press the **Add and Close** or the **Add** button.



For convenience, the **Add** button will keep the dialog open so you can choose another symbol. When you are finished, click **Add and Close** to dismiss this dialog.

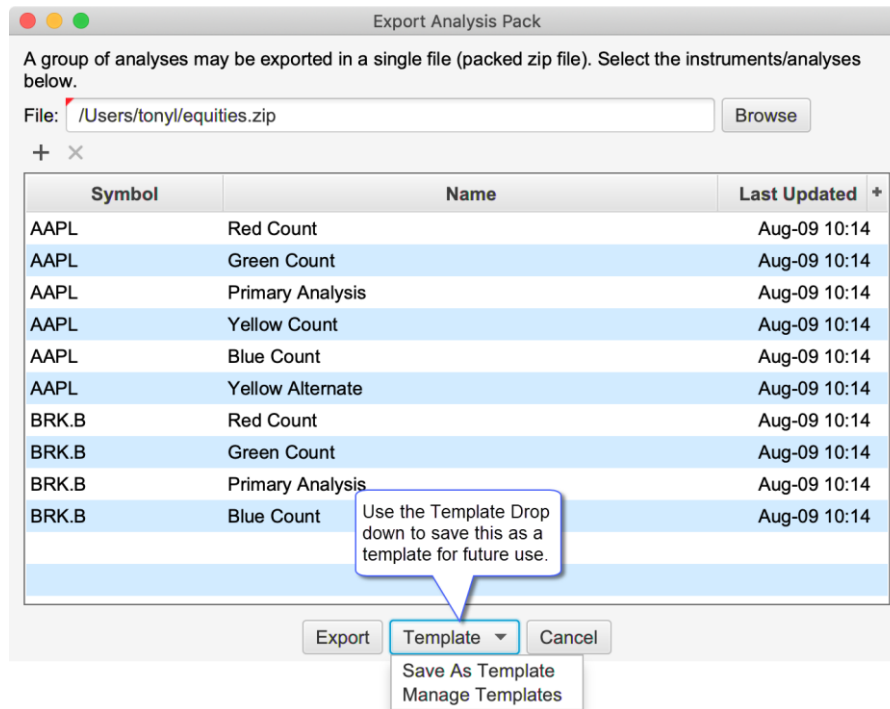


When you have completed selecting all of the analyses for the pack, click on the **Export** button at the bottom of the **Export Analysis Pack** dialog. For convenience all of the settings in this dialog will be saved for the next time you use it.

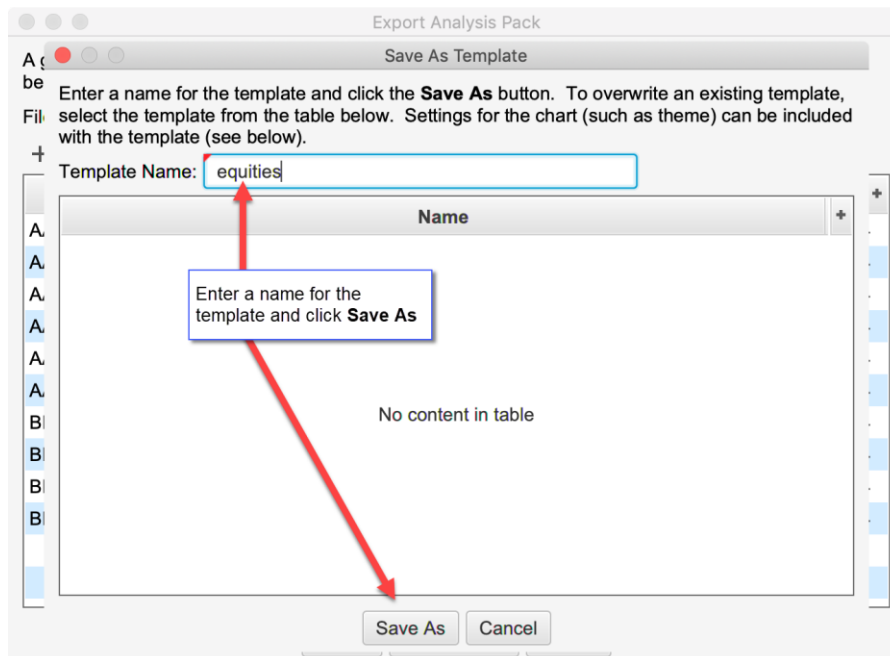


### 3.2.1.1 Export Templates

Templates are useful in cases where you frequently export different sets of analyses to one or more users or transfer files between computers.

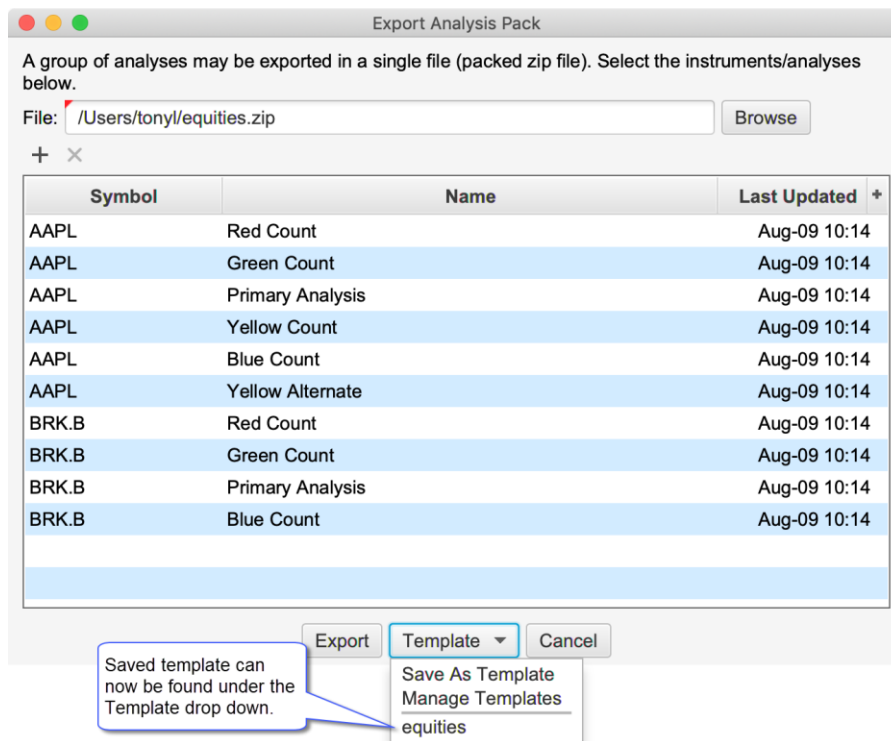


This will launch the Save As Template dialog. Enter a name for the template and click the Save As button (see below).



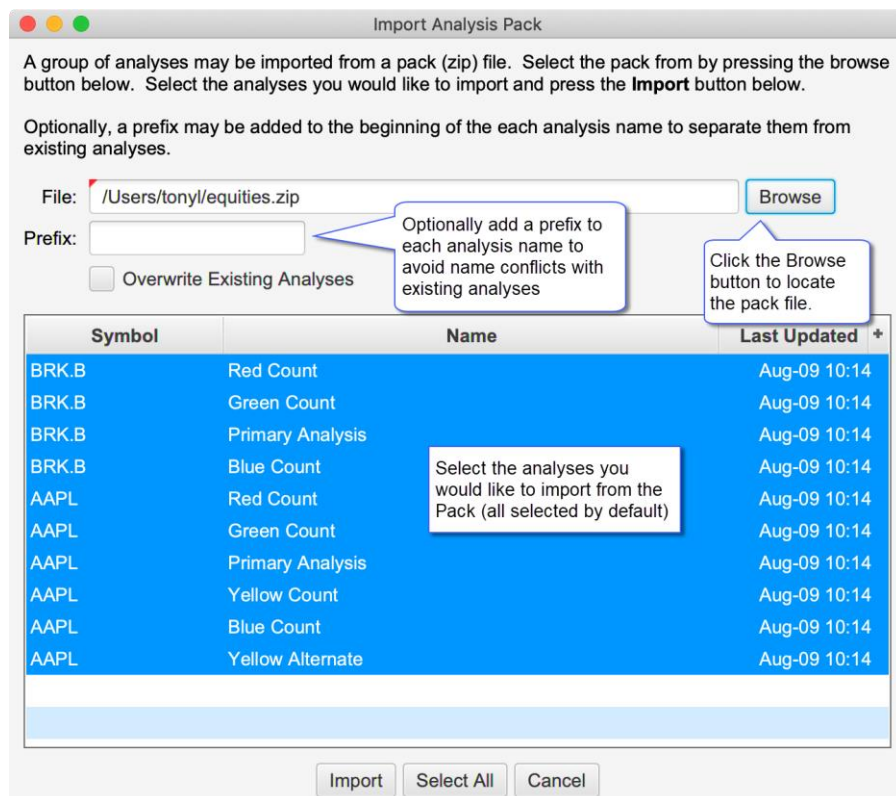
The template can then be applied by choosing it from the Template drop down at the bottom of the dialog.





### 3.2.2 Importing a Pack

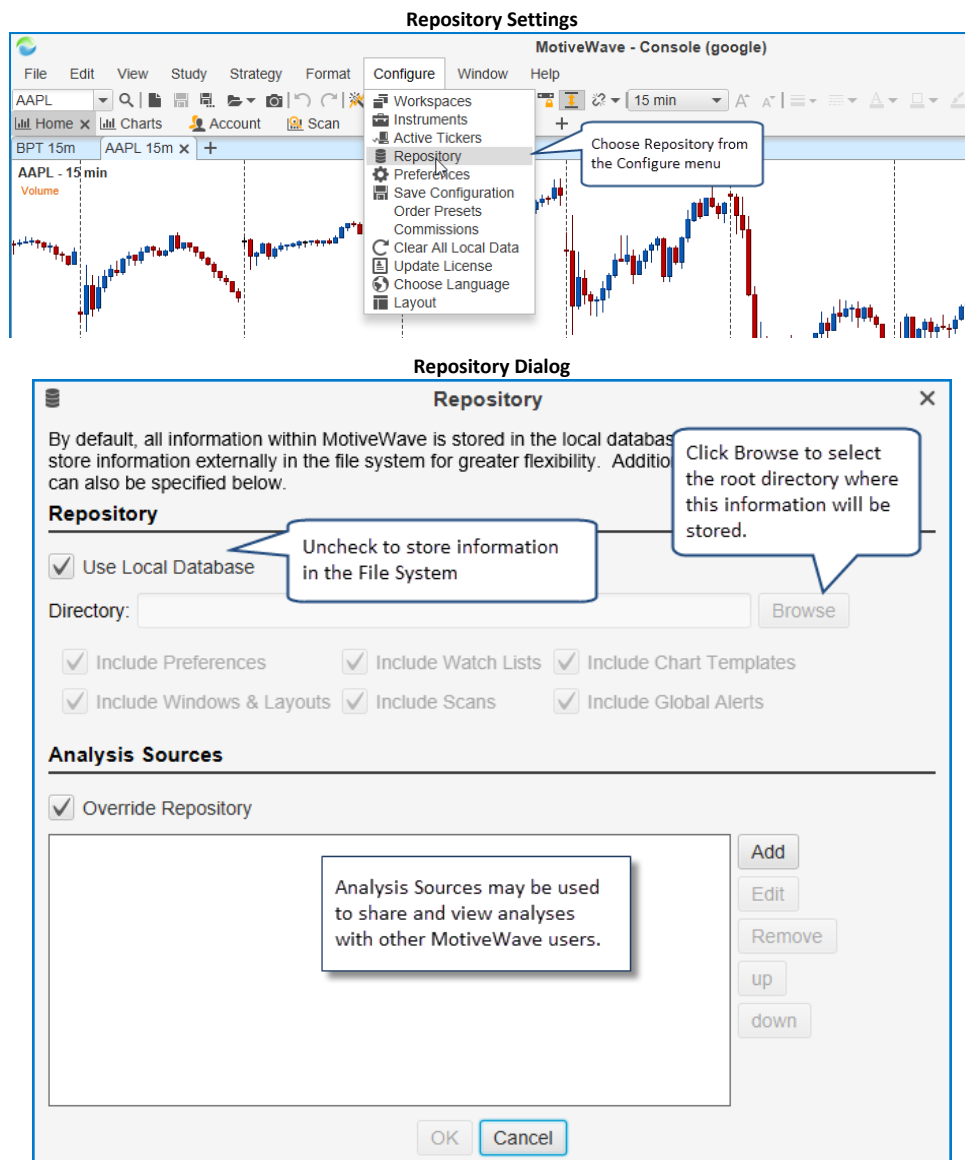
Use the **Import Analysis Pack** dialog to import analyses from a pack into your workspace. A prefix can optionally be added to each analysis. This can be useful to identify where the analyses came from or to avoid naming conflicts with existing analyses in your workspace. You can selectively choose which analyses to import. By default, all will be selected.



### 3.3 Repository

By default, analyses and configuration information are stored in the workspace. The repository feature provides more flexibility by allowing some of all of this information to be stored in the file system. This can be very useful if you want to synchronize this data (using Google Drive or Drop Box) with other computers or use as an alternative way to create backups.

Choose *Configure -> Repository* from the Console menu bar to access the Repository settings.



Uncheck the **Use Local Database** option to store information in the File System instead of the database. You will need to choose the root directory for this information by clicking the **Browse** button. If you would like to share this data using Google Drive or Drop Box, make sure to choose a location inside the shared folder.

Optionally you can choose to store the following types of information by checking the boxes below:

1. **Include Preferences** – this is the settings in the Preferences dialog and other configured settings.
2. **Include Watch Lists** – watch lists and quote sheets
3. **Include Chart Templates** – any study templates that you have setup in your system

4. **Include Windows & Layouts** – open window information and locations as well as the Console layout
5. **Include Scans** – scan criteria
6. **Include Global Alerts** – this applies to price alerts.

### 3.3.1 Sharing using Google Drive or Drop Box

Storing data in the File System provides the flexibility to share this information with other computers using utilities such as Google Drive or Drop Box. Note: this feature is not limited to these two services. Any cloud-based service that interacts with your local file system should work just as well.

For more information on these services, see their websites:

1. <https://www.dropbox.com/>
2. <https://drive.google.com/>

### 3.3.2 Folder Structure

If you look at the root folder for the repository you will see two folders:

1. **analysis** – contains analysis files. This directory contains several sub folders that organize analysis by instrument type and instrument symbol.
2. **config** – contains configuration files

The following diagram shows an example repository structure for an FXCM workspace.

Repository Folder Structure

This is the root folder. It contains two sub folders: **analysis** and **config**

AKA FOREX. the folders here will depend on the broker or data service

This is the **analysis** folder. Analyses are organized by Instrument Type and Instrument (see below)

This is the **config** folder. It contains several files that have configuration information.

This is the **CASH** folder. Each instrument type folder will contain a folder for each instrument. These sub folders will contain an analysis file for each analysis

File name will match the name of the analysis

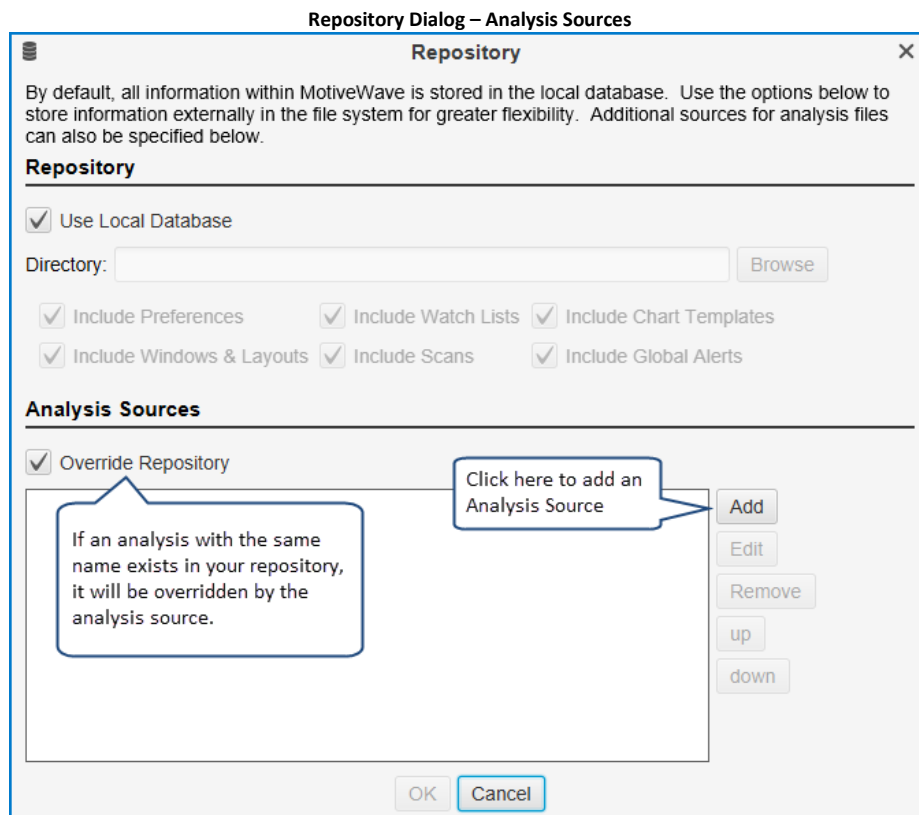
Default Analysis

These are the analysis files under the EURUSD folder. Each instrument folder will contain a file for each analysis you created for the symbol

### 3.3.3 Analysis Sources

**Analysis sources** provide a way to share specific analyses or to access analyses from other MotiveWave™ users. **Analysis sources** are defined by a folder that exists in your local file system. You would need to use a service such as Google Drive or Drop Box to perform the sharing and synchronization.

**Analysis sources** are defined in the Repository Dialog (*Configure -> Repository* from the Console menu bar)

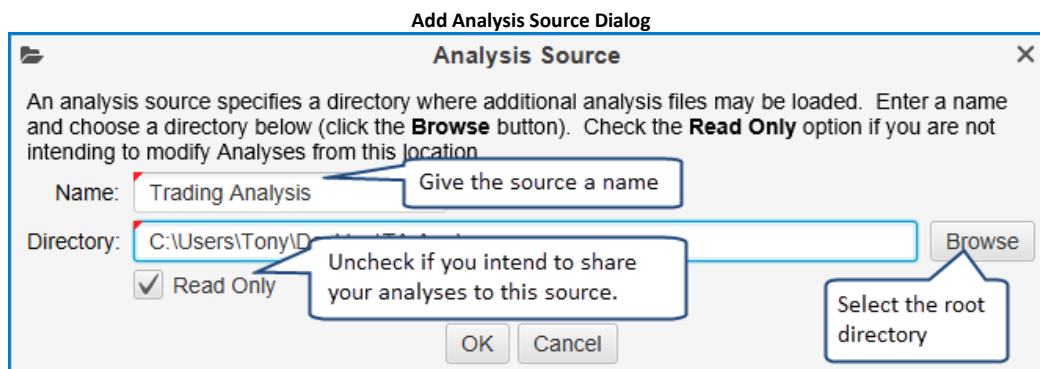


Click on the **Add** button to define an **analysis source**. You can have multiple **analysis sources**. The **Override Repository** option is important if there are naming conflicts between your local repository and the **analysis sources**.

For example if you created an analysis called “Wave 3 Intraday” for the EUR/USD pair and one of the **analysis sources** also has an analysis called “Wave 3 Intraday” for EUR/USD, MotiveWave™ will need to determine which one to display. If **Override Repository** is checked, it will display the one from the **analysis source** (instead of the local repository).

The following dialog will appear when you click the **Add** button. Each **analysis source** will require a name. This name can be anything you like, but should reflect the source of the analyses. In the example below, we chose the name “Trading Analysis” (this is one of our partners). Choose a directory (folder) for the source by clicking on the **Browse** button. (Note: this will be a folder that is synchronized using Google Drive/Drop Box).

The **Read Only** attribute indicates if you are going to be modifying the analyses or just viewing them. Uncheck this option if you are intending to publish analyses to this source.



### 3.3.3.1 Publishing Analyses

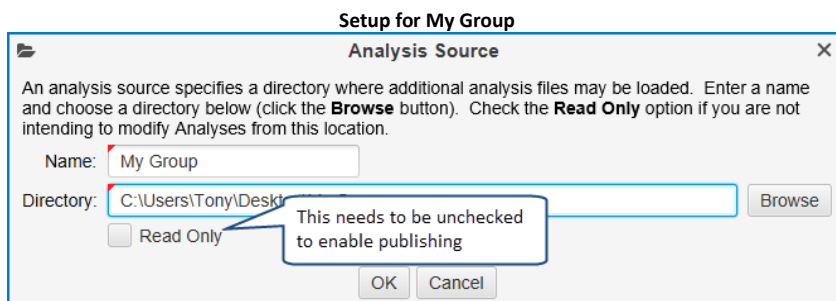
If you are planning to share your analyses with other users, then you would create an **analysis source** and uncheck the **Read Only** attribute. Analyses that exist in your repository are not automatically shared; you will need to explicitly publish each analysis to this new source.

If you would like to publish an analysis to an **analysis source**, choose *File -> Save To -> <Analysis Source Name>* (where <Analysis Source Name> is the name you chose in the Add Analysis Source Dialog) from the chart menu bar (Note: it is *File -> Chart -> Save To -> <Analysis Source Name>* from the *Console*).

This action will save this analysis (make a copy) to a sub folder in the *analysis source* folder that you defined earlier.

The file synchronization software that you setup (ie Drop Box etc) will take care of synchronizing that file with the folders of all your users.

In the following example, we have created an **analysis source** called **My Group**. The **Read Only** attribute has been unchecked to tell MotiveWave™ that it can publish analyses to this location. This **analysis source** will now be available in the *Save To* menu (see below).



Publishing to My Group

