

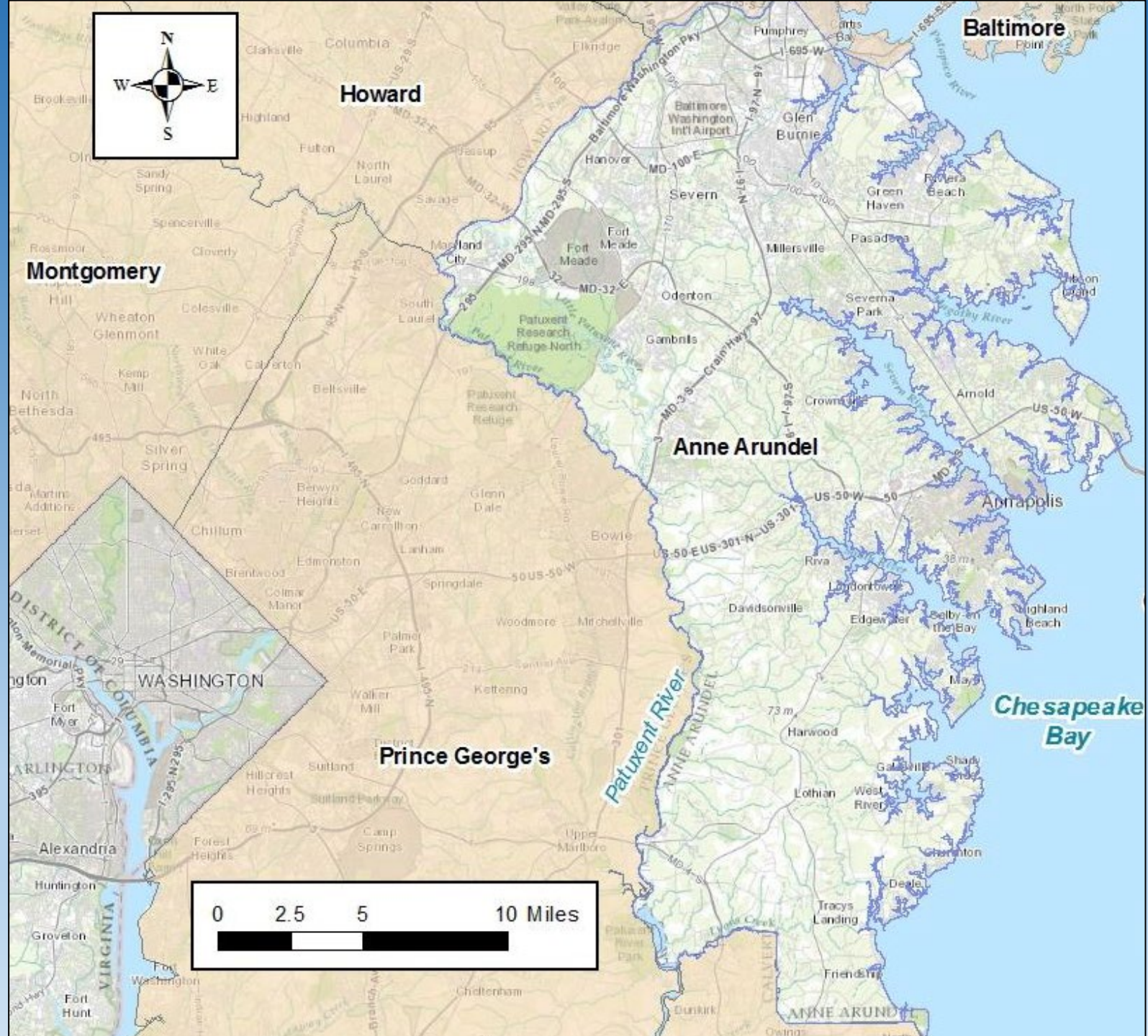
Saving Endangered Cemeteries: *Anne Arundel County's Documentation & Public Engagement Efforts*



Anastasia Poulos, Archaeological Sites Planner

pzpoul44@aacounty.org, 410-222-7486

Cultural Resources Division, Office of Planning & Zoning, Anne Arundel County Government, MD



Howard

Baltimore

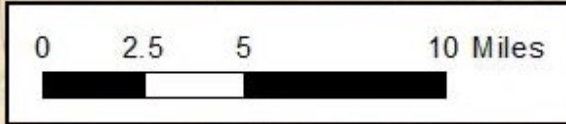
Montgomery

Anne Arundel

Prince George's

Chesapeake Bay

WASHINGTON



Cemeteries in Recent Maryland Headlines

Cemetery damaged, families outraged

Developer, neighbors battle over boundaries of old family graveyard

Family seeks restoration of 'lost' cemetery

Plans for subdivision threaten family cemetery

Gone, but not forgotten

Posted: 4:22 PM, Nov 26, 2018 Updated: 11:25 PM, Nov 26, 2018

Displaced graves can't be found at Baltimore cemetery

A Baltimore native began searching for the final resting place of his grandparents two years ago but discovered they were moved and can't be found. Jack Vulgaris, 83, is searching for the graves of his grandparents buried at Trinity Cemetery in east Baltimore years ago.

Share



Updated: 7:32 AM EDT May 10, 2016

Casket, Headstones Drifted From Maryland Cemetery

By Chris Gordon and Andrea Swalec

Published Jun 22, 2015 at 9:42 PM | Updated at 11:58 PM EDT on Jun 22, 2015





Crowner Family Cemetery, Galesville



Shesley Road Cemetery, Mayo

Water filling unmarked burial depressions

Capital Gazette

BREAKING NEWS ENEWSPAPER LEGAL NOTICE READERS CHOICE AD CIRCULARS PAID CONTENT

Lifestyle

f t e

Unmarked graves pervade Anne Arundel, Prince George's



...out an unmarked 'vault cover' burial at the John Wesley ...re Sun Media Group)

July 19, 2017

Vegetation showing the unmarked burials of the enslaved at Whitehall, Annapolis

Cemetery Preservation Challenges: *Protection of Unmarked Cemeteries*

Weedon Family Cemetery 2012





Weedon Family Cemetery 2012

Weedon Family Cemetery 2012



Endangered Cemeteries in Anne Arundel County

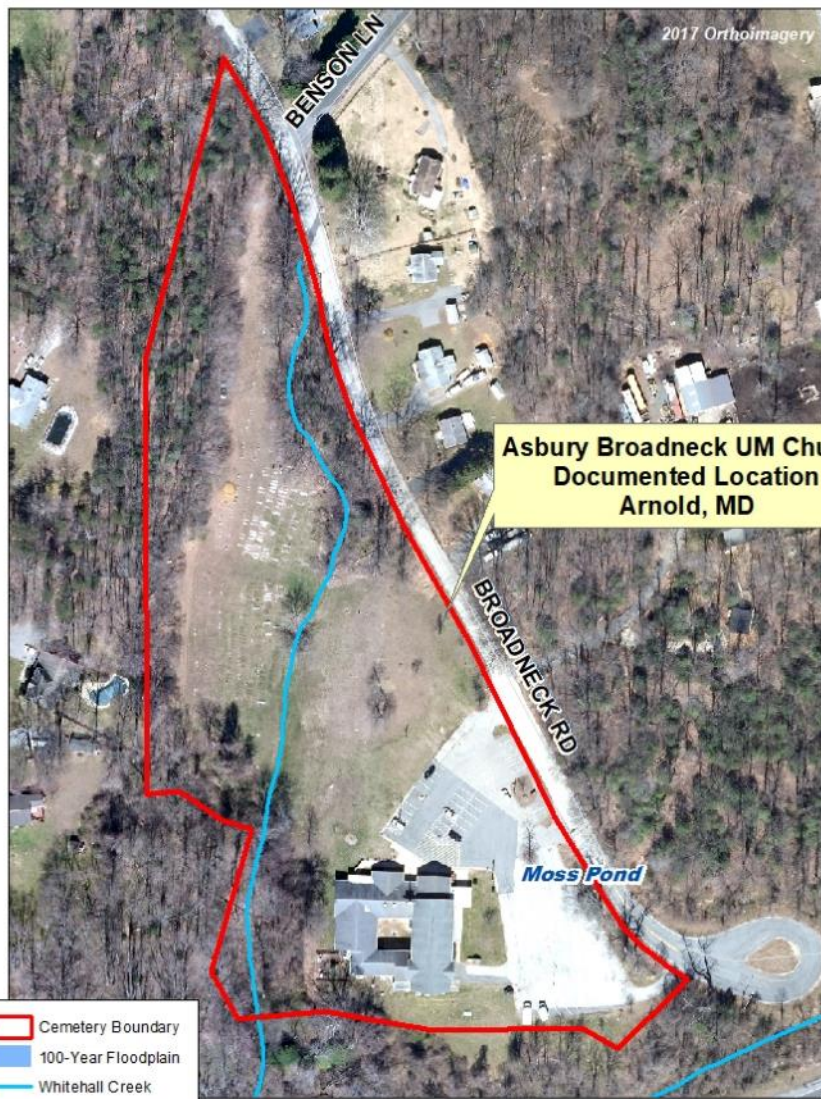
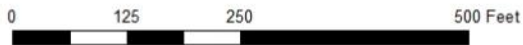


Photo Source: "Historic African-American church secures funding to restore flood damage," by Selene San Felice. *The Capital Gazette*, 10/3/17

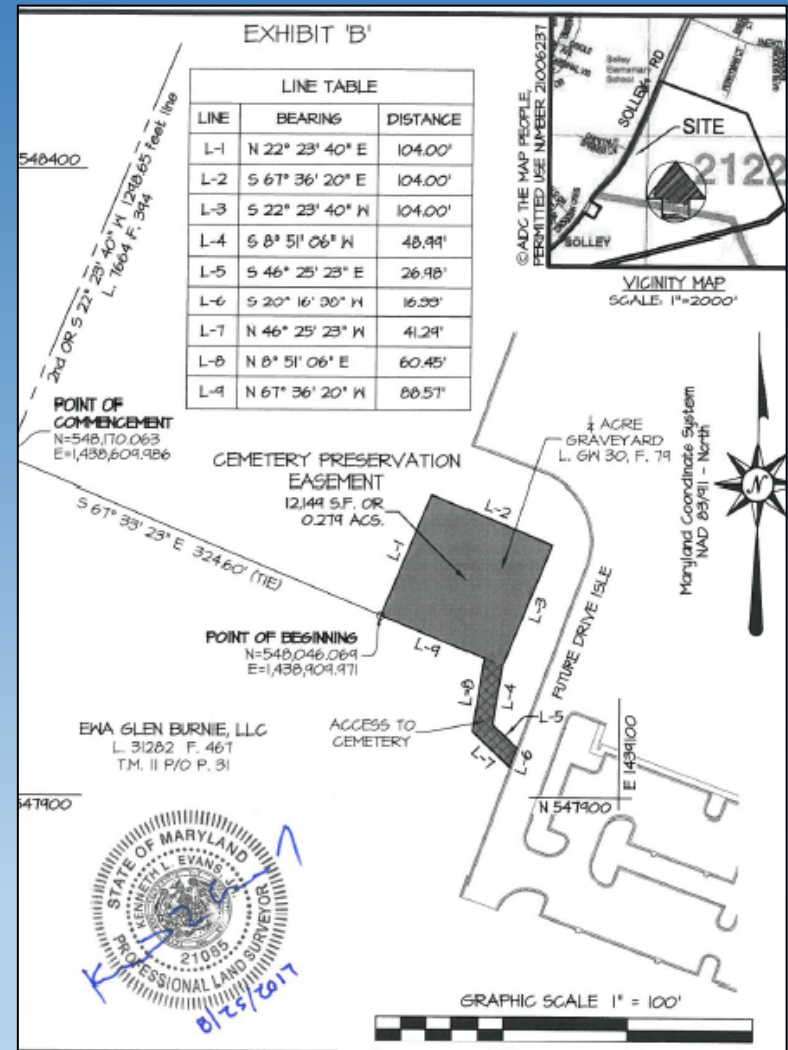
**Cemeteries impacted by stream erosion and storm flooding:
*Asbury Broadneck UM Church Case Study***



**Preservation
Challenges:
Maintenance &
Protection of Historic
Cemeteries**



- **Maryland State Law** includes criminal statutes related to the desecration of cemeteries and laws guiding the management of active cemeteries. Additionally, it provides means of gaining access to cemeteries on private properties, enabling property tax credits, and identifies the Maryland Historical Trust as conservation advisors to historic cemetery owners.
- Anne Arundel County is one of only a handful of local jurisdictions in Maryland that have **local ordinances** to expressly protect historic cemeteries.
- Regulatory tools for protection (see **Anne Arundel County Code, Article 17**) include identification during permitting and development.
 - Cemeteries must be avoided/ left in place, and are protected in perpetuity through an easement.

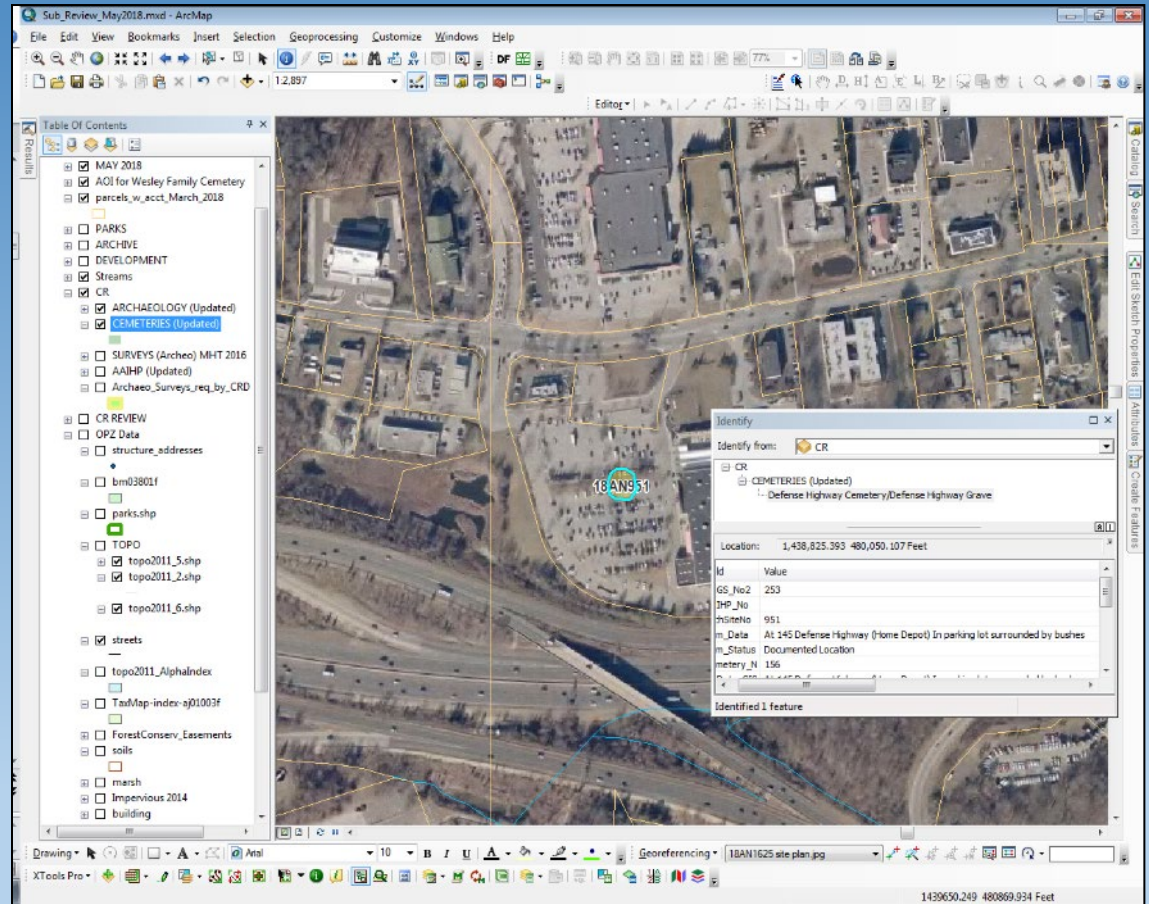


Geographic Information Systems (GIS)

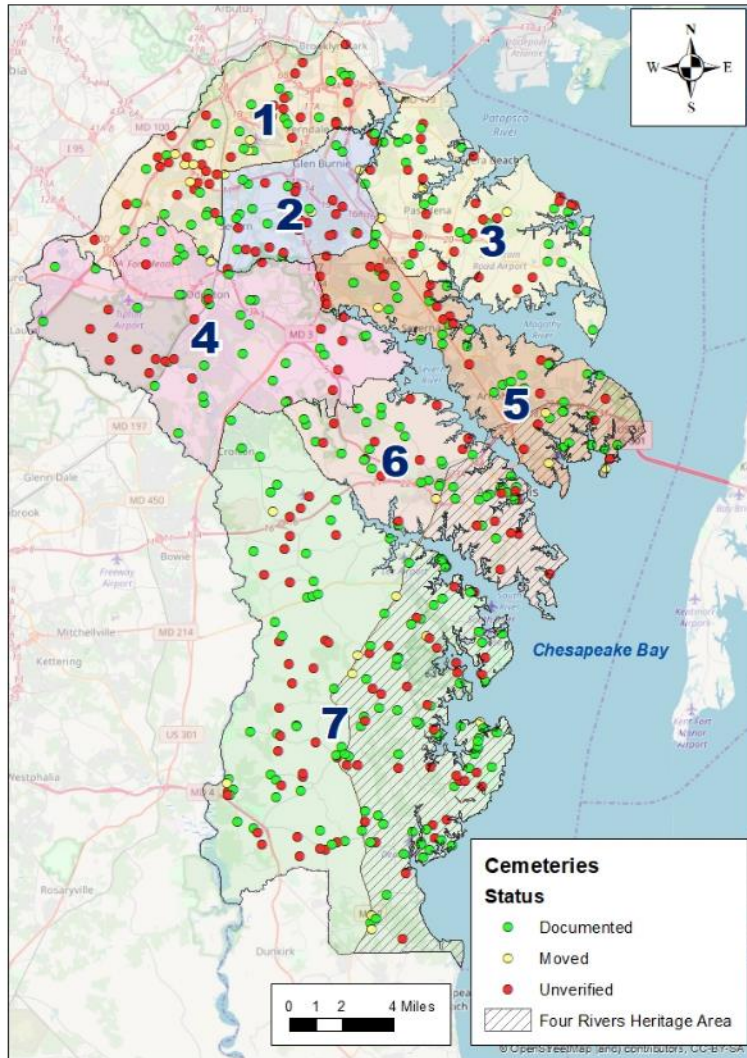
Cemetery Management Tools

GIS Functionality:

- To ensure the preservation of significant sites and structures
- To assess potential impacts
- To use spatial analysis to approach archaeological and historical research questions



Anne Arundel County Council Districts



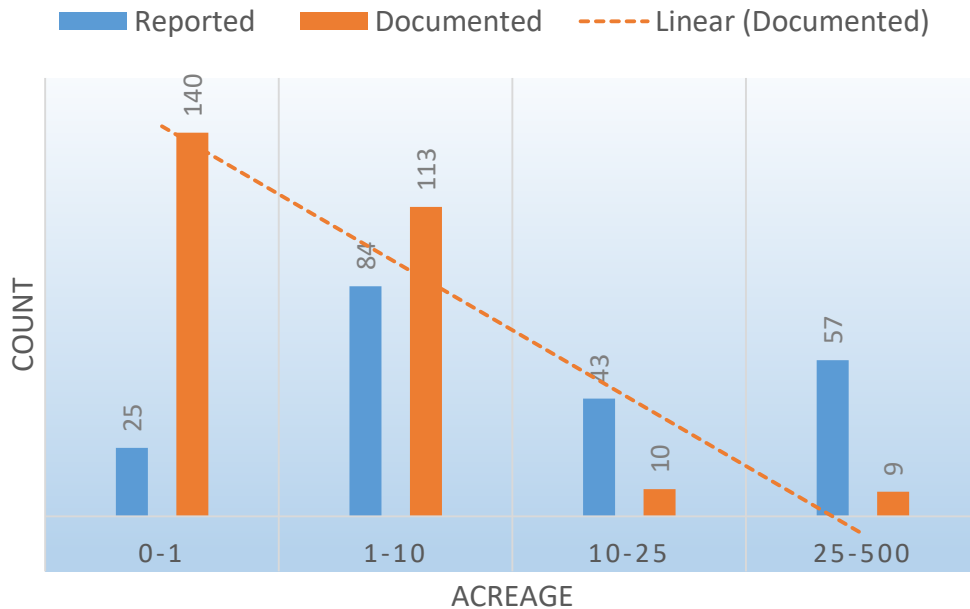
Cemeteries in Anne Arundel County

- More than 500 Known Cemeteries in the County's Database
- Almost half (over 200) are unverified

Documented ("It's here")

Its coordinates and features have been recorded in the field.

ANNE ARUNDEL COUNTY CEMETERIES



Reported ("Rumor Has It")

Oral Tradition or Historic Records say the cemetery is in the vicinity, but we have not documented exactly where...

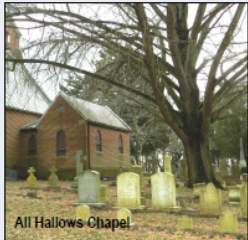
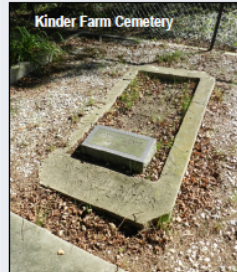
John Macubin Gravesite - Where are you?



Become a member of the Anne Arundel County
Cemetery Preservation Stewardship Program!

**Volunteer Documentation
Training Workshop**

Saturday, October 19, 2019
10:00 am-1:00 pm
Harvest Hall at Kinder Farm Park,
1001 Kinder Farm Rd.
Millersville, Maryland



Anne Arundel County, Maryland has over 500 *known* cemeteries. Perhaps you have one on your property or have seen one in your neighborhood. Many of these cemeteries are unrecorded and awaiting rediscovery...

**We need your help documenting
these important historic places!**



Join the *County's Cultural Resources Division* & the *Anne Arundel Genealogical Society* at this half-day *volunteer training workshop* to *learn how to document & report cemetery location and conditions*. This training will include both a *presentation* and *in-the-field practice*. Your help in this effort will enable us to better manage and protect these important historic resources .

FIND OUT MORE HERE:
www.aacounty.org/cemeteries

Citizen Preservation Stewardship Program



Anne Arundel County Cemetery Survey Tool

<https://www.aacounty.org/cemeteries>

Planning and Zoning

About Us

Vision & Mission

Green Notices

County Code & Bill Updates

Community Revitalization

Cultural Resources

FAQs

About Us

Archaeological Sites

Cemeteries

Current Historic Research

Historic Preservation Tax Credit

Historic Properties Inventory

Scenic and Historic Roads

Volunteer Opportunities & Public Events

Forms & Publications

Historic Cemeteries

Click here for a guide on the PRESERVATION & PROTECTION of historic cemeteries in Anne Arundel County:

[The Resource Guide to Historic Cemeteries of Anne Arundel County](#)

****JUST RELEASED, AUGUST 2020****

Learn about CEMETERY ICONOGRAPHY in this County by reading the new publication by this County's *Genealogical Society*, supported by the *Cultural Resources Division, Arts Council, & Trader Foundation*.

[Anne Arundel County Cemetery Art.](#)

We need *your* help in protecting our historic cemeteries!

Click here to learn how to join the [Citizen Preservation Stewardship Program](#) for historic cemeteries. Help us with documenting these important places by using the [digital cemetery documentation APP](#) or a [downloadable documentation FORM](#).

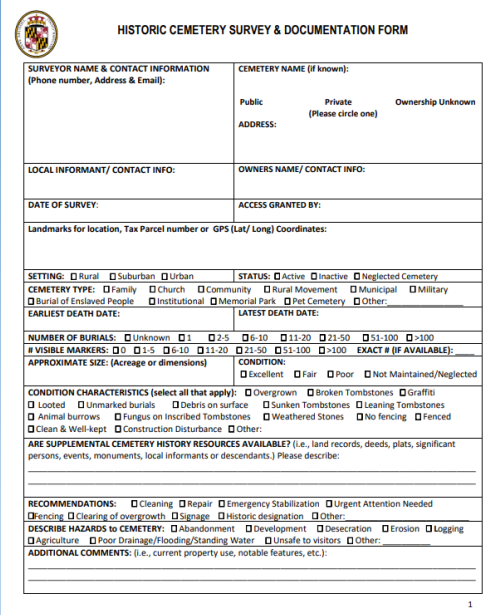
<https://www.aacounty.org/cemeteries>

Cemetery Survey & Documentation

The 1st step in developing a Cemetery Preservation Plan:

1. General Cemetery Survey (Reconnaissance Level)
2. Individual Marker Survey (Intensive Level Survey)
3. Historical Research
4. Cemetery Map

- This documentation provides a permanent record of the cemetery



HISTORIC CEMETERY SURVEY & DOCUMENTATION FORM

SURVEYOR NAME & CONTACT INFORMATION (Phone number, Address & Email): _____

CEMETERY NAME (if known): _____

Public _____ Private _____ Ownership Unknown _____
(Please circle one)

ADDRESS: _____

LOCAL INFORMANT/ CONTACT INFO: _____

OWNERS NAME/ CONTACT INFO: _____

DATE OF SURVEY: _____

ACCESS GRANTED BY: _____

Landmarks for location, Tax Parcel number or GPS (Lat/ Long) Coordinates: _____

SETTING: Rural Suburban Urban **STATUS:** Active Inactive Neglected Cemetery

CEMETERY TYPE: Family Church Community Rural Movement Municipal Military

Burial of Enslaved People Institutional Memorial Park Pet Cemetery Other: _____

EARLIEST DEATH DATE: _____ **LATEST DEATH DATE:** _____

NUMBER OF BURIALS: Unknown 1 2-5 6-10 11-20 21-50 51-100 >100

VISIBLE MARKERS: 0 1-5 6-10 11-20 21-50 51-100 >100 **EXACT # (IF AVAILABLE):** _____

APPROXIMATE SIZE: (Acreage or dimensions) _____ **CONDITION:** Excellent Fair Poor Not Maintained/Neglected

CONDITION CHARACTERISTICS (select all that apply): Overgrown Broken Tombstones Graffiti
 Looted Unmarked burials Debris on surface Sunken Tombstones Leaning Tombstones
 Animal burrows Fungus on Inscribed Tombstones Weathered Stones No fencing Fenced
 Clean & Well-kept Construction Disturbance Other: _____

ARE SUPPLEMENTAL CEMETERY HISTORY RESOURCES AVAILABLE? (i.e., land records, deeds, plats, significant persons, events, monuments, local informants or descendants.) Please describe:

RECOMMENDATIONS: Cleaning Repair Emergency Stabilization Urgent Attention Needed
 Fencing Clearing of overgrowth Signage Historic designation Other: _____

DESCRIBE HAZARDS to CEMETERY: Abandonment Development Desecration Erosion Logging
 Agriculture Poor Drainage/Flooding/Standing Water Unsafe to visitors Other: _____

ADDITIONAL COMMENTS: (i.e., current property use, notable features, etc.):

1

“Show me the numbers...”

Maryland Real Property Section 14-21

(4) "Person in interest" means a person who:

(i) Is **related by blood or marriage** to the person interred in a burial site;

(ii) **Has a cultural affiliation** with the person interred in a burial site; or

(iii) Has an interest in a burial site that the **Office of the State's Attorney** for the county where the burial site is located **recognizes is in the public interest after consultation with a local burial sites advisory board or, if such a board does not exist, the Maryland Historical Trust.**

(b) Any **person in interest may request the owner** of a burial site or of the land encompassing a burial site that has been documented or recognized as a burial site by the public or any person in interest to grant reasonable access to the burial site **for the purpose of restoring, maintaining, or viewing the burial site.**

(c) (1) A person requesting access to a burial site under subsection (b) or (d) of this section may execute an agreement with the owner of the burial site or of the land encompassing the burial site using a form similar to the form below:

Permission to Enter

I hereby grant the person named below permission to enter my property, subject to the terms of the agreement, on the following dates: _____

Signed

(Landowner)

Agreement

In return for the privilege of entering on the private property for the purpose of restoring, maintaining, or viewing the burial site or transporting human remains to the burial site, I agree to adhere to every law, observe every safety precaution and practice, take every precaution against fire, and assume all responsibility and liability for my person and my property, while on the landowner's property.

Signed.....

(Visitor)

Cemetery Condition Assessment

Excellent

- **All tombstones are upright, excellent visibility**
- Maintained and manicured by a groundskeeper
- Secure Boundary Enclosure
- No Debris, No Dumping
- Paths visible and maintained

Good

- **Less than 25% of markers are toppled or broken**
- Enclosure Well Maintained
- Visibility is good
- No Debris or Dumping visible
- Paths visible and maintained

Fair

- 50-75% of markers are toppled or broken
- Mowed occasionally, no landscaping
- Fence needs minor repair
- Visibility of markers is okay
- Debris obvious but not in main part of cemetery
- Visible Paths

Neglected

- Toppled or broken gravestones dominate
- High Vegetation
- Enclosure needs major repairs
- Poor visibility of markers and paths
- Debris, looting, etc. all visible

Cemetery Types



Meyn Family Cemetery, Kinder Farm Park

Family Burying Grounds

- Placed at the edge of a field or at the highest point of the property
 - Wooden Markers or simple field stones during early settlement period
 - Later into the 18th and 19th centuries, sandstone, marble granite markers
- Shade trees often planted nearby
 - Willows
 - Cedars
 - Oaks
 - Typically surrounded by a fence

Cemetery Types



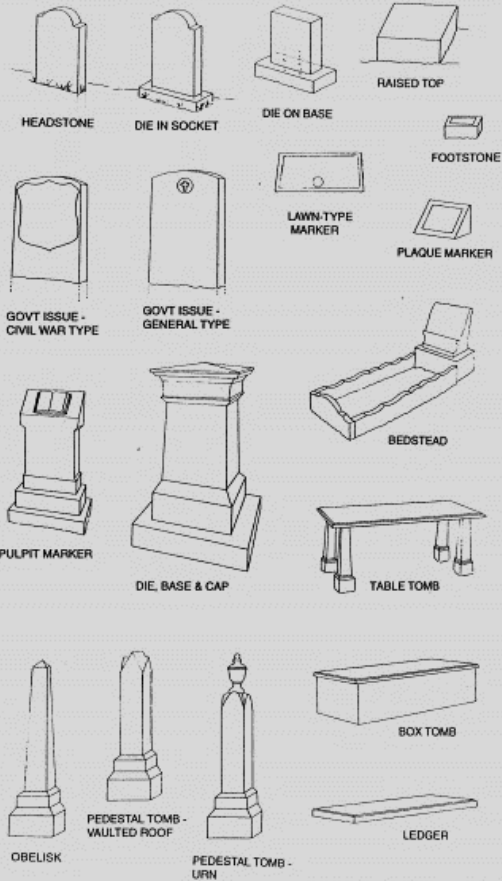
Burials of Enslaved Peoples

A burial places for enslaved individuals prior to the end of the Civil War in 1865

Usually there is no enclosure and it is unmarked, although local fieldstones may be used as markers. On occasion, favored enslaved individuals may have a marker provided by the white slaveholder

- Can be set adjacent to family cemeteries of the white slaveholders or at another spot on the property
- Many of these cemeteries are lost, undocumented, or only known through oral tradition

QUICK FIELD GUIDE TO MONUMENT TYPES



© Chicora Foundation 1999

Grave Markers and Burials

Counting what you see and what you don't see...



Water filling unmarked burial depressions



Vegetation revealing unmarked burial depressions

Condition Characteristics



Describe the Cemetery Condition

- Overgrown
- Broken Tombstones
- Graffiti
- Looted
- Unmarked Burials
- Debris on the surface
- Sunken Tombstones
- Leaning Tombstones
- Animal Burrows
- Fungus on Inscribed Tombstones
- Weathered Stones
- No fencing
- Fenced
- Clean and Well-Kept
- Construction Disturbance
- *Other...*

Condition Assessments



Describe Any Hazards to the Cemetery

- Abandonment
- Development
- Desecration
- Erosion
- Logging
- Poor Drainage/Flooding/
Standing Water
- Unsafe to Visitors
- Other

Cemetery Management



Recommendations

- Cleaning
 - Repair
 - Emergency Stabilization
 - Urgent Attention Needed
 - Fencing
- Clearing of Overgrowth
 - Signage
 - Historic Designation
 - Other

CHALLENGES

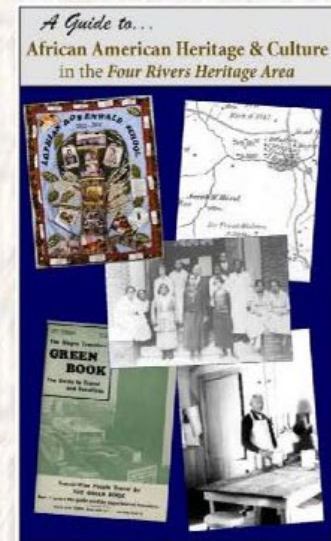
- A Lack of Financial Resources
- Digital apps are not as user-friendly for a wider demographic and often can be unreliable in the field
- Digital apps can restrict some user-ability to add information
- Data entry into a useable and standardized system
- Quality Check
- Data-sharing between local and MD State data
- Establishing a mechanism for follow-up/ more intensive survey
- How to publish a cemetery inventory or map that is sensitive to private property owners

African American Heritage & History

Click here to explore

African American Voices, Memories and Places: A Four Rivers Heritage Trail

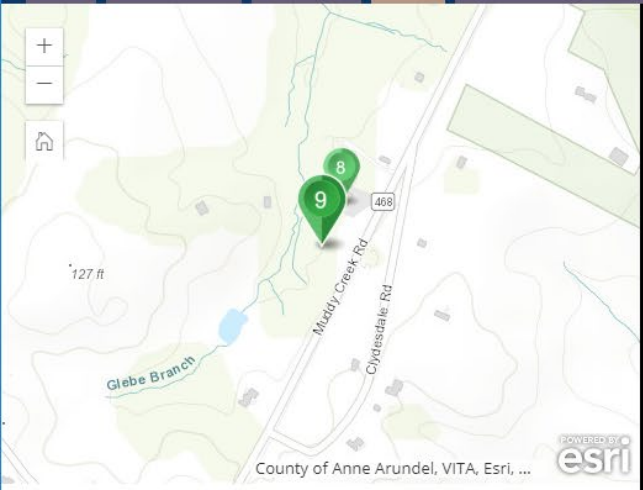
Anne Arundel County's Office of Planning and Zoning and the Lost Towns Project is pleased to announce the launch of an online 'virtual' trail that highlights and celebrates the contributions of African Americans over Anne Arundel County's 370-year history. The trail documents families, individuals, historic places, events, struggles, and accomplishments through, slavery, emancipation, voting rights, desegregation, and the continued fight for Civil Rights. Come hear the voices and memories of earlier generations who helped to identify historic sites and landscapes of the past.



And click here to download and print the companion booklet to the virtual tour,
A Guide to African American Heritage & Culture in the Four Rivers Heritage Area.

African American Voices, Memories and Places: A Four Rivers Heritage Trail

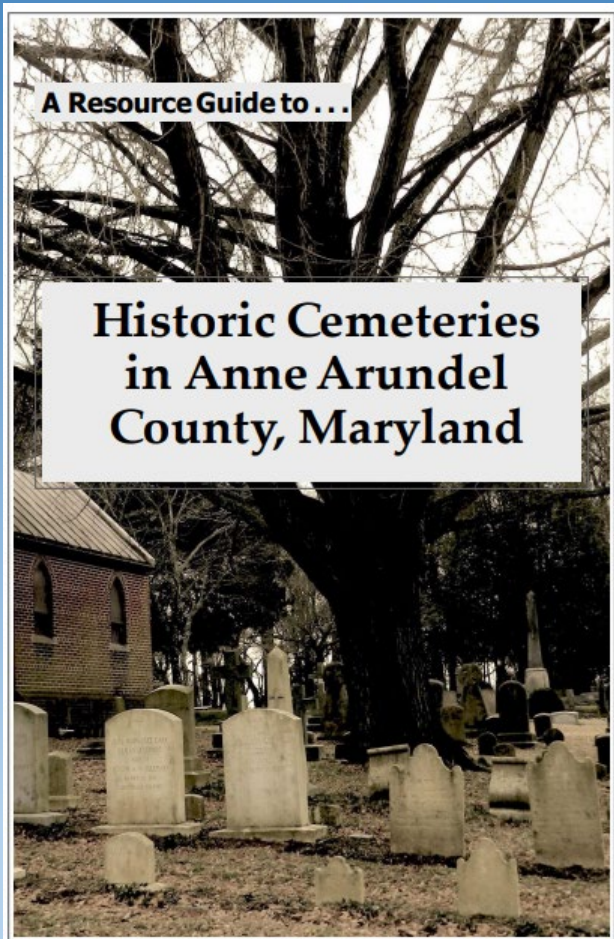
- Main
- St. Margarets
- Annapolis
- Mayo
- Rhode & West Rivers
- Lothian & Shady Side
- Deale/Friendship
- Acknowledgements



9 Hope Memorial - St. Mark United Methodist Church Cemetery

Hope Memorial - St. Mark United Methodist Church Cemetery has 104 marked graves. While the oldest visible date of internement is 1940, the landscape suggests that there are likely many unmarked graves, perhaps burials that were marked by less permanent monuments or wooden crosses, a common method in the 18th and 19th century. The site has been in use as a place of worship for the local African American community for nearly 150 years, and recorded as an African-American Cemetery in the book *Grave Matters* compiled and edited by Christine N Simmons & Theresa L Harding on page 93. Some of the family names visible on surviving monuments at Hope Memorial Cemetery include Green, Boston, Sellman,





A Resource Guide to . . .

**Historic Cemeteries
in Anne Arundel
County, Maryland**

Find it here:

<https://www.aacounty.org/cemeteries>



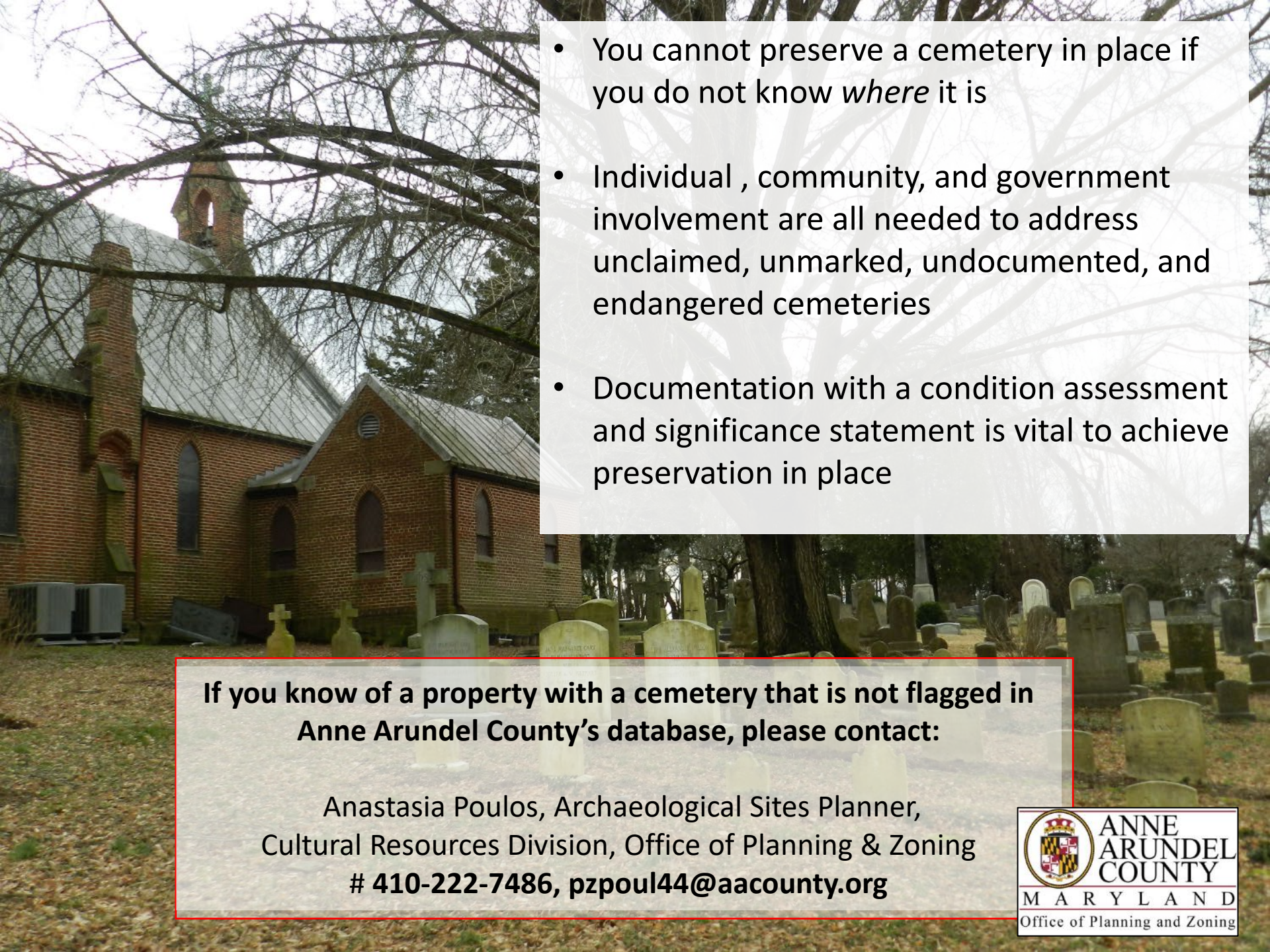
ANNE ARUNDEL COUNTY CEMETERY ART

by Christine N. Simmons
and the Anne Arundel Genealogical Society



Find it here:

<https://www.aacounty.org/cemeteries>

- 
- You cannot preserve a cemetery in place if you do not know *where* it is
 - Individual , community, and government involvement are all needed to address unclaimed, unmarked, undocumented, and endangered cemeteries
 - Documentation with a condition assessment and significance statement is vital to achieve preservation in place

If you know of a property with a cemetery that is not flagged in Anne Arundel County's database, please contact:

Anastasia Poulos, Archaeological Sites Planner,
Cultural Resources Division, Office of Planning & Zoning
410-222-7486, pzpoul44@aacounty.org

