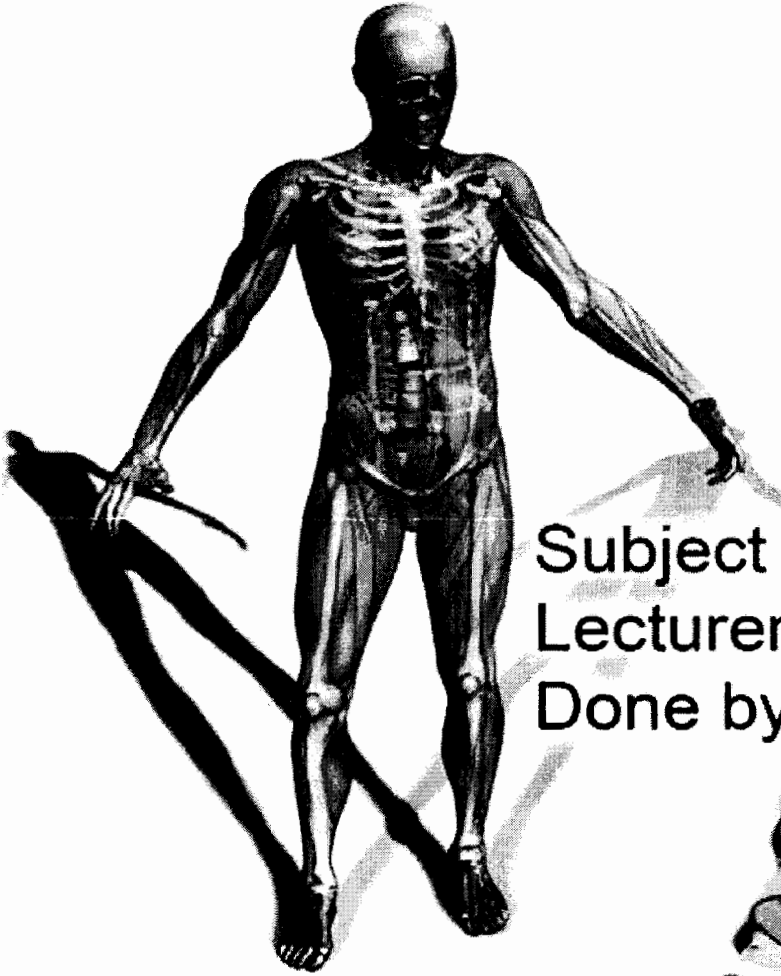




ANATOMY

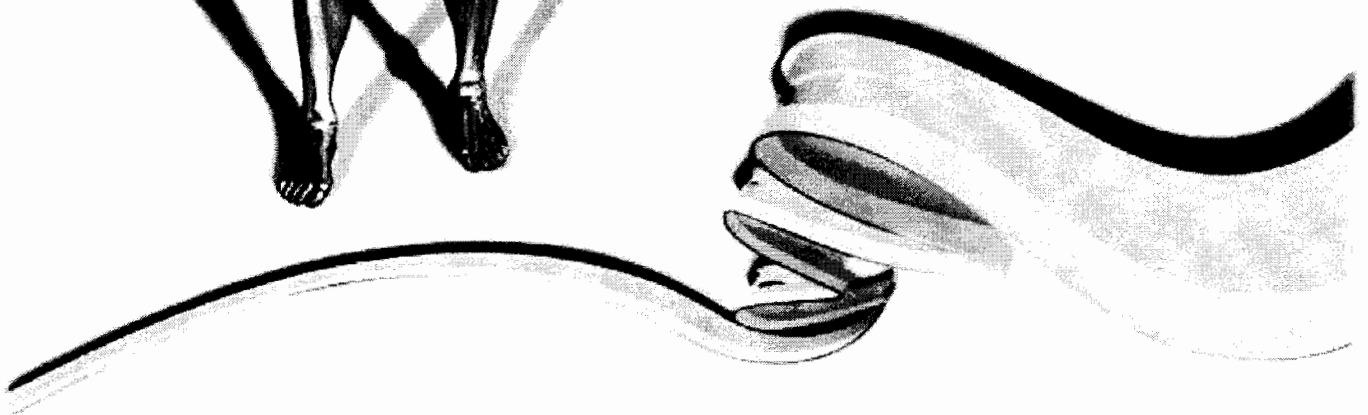


۲۰ فرس

Subject :

Lecturer : **Maher Hadidi**

Done by :

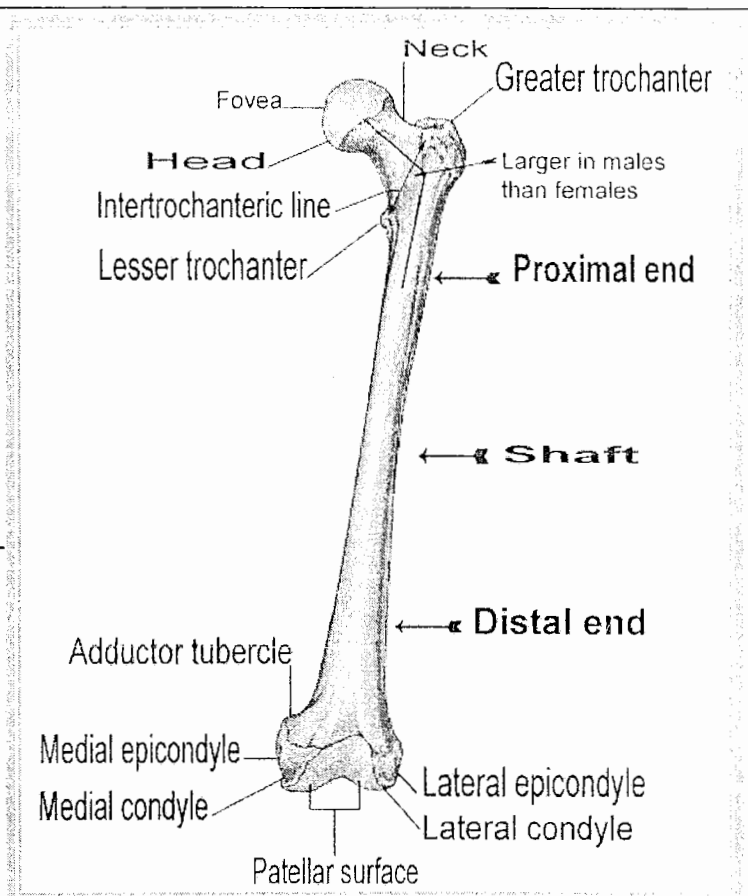


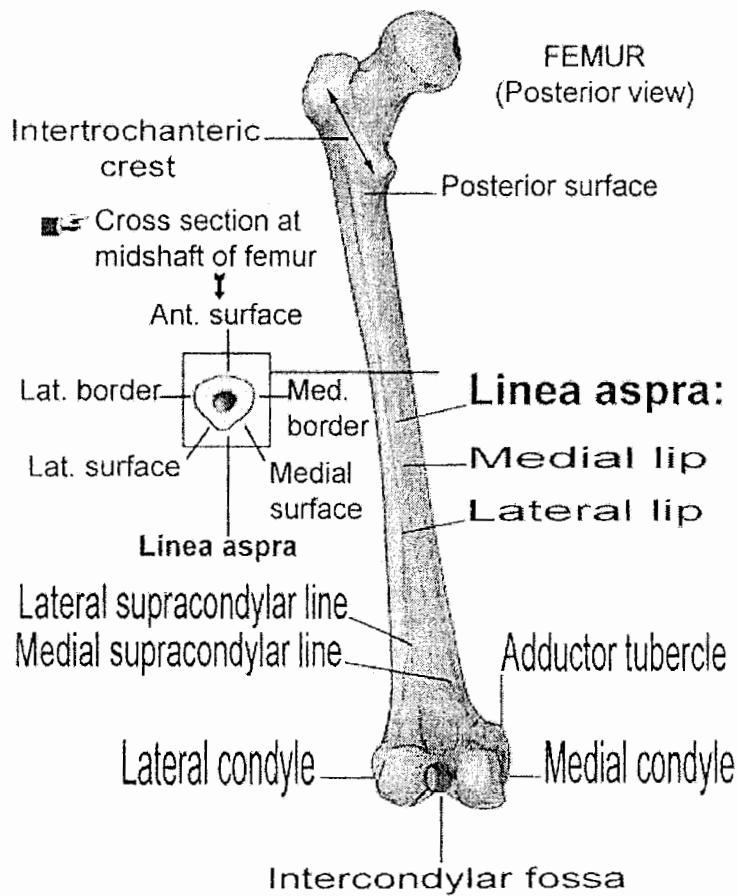
lecture # : **16** Date :

Femur

Anterior view

- Longest bone in the body.
- Represent about 1/4 of person's height.
- Bowing anterior for strength.
- Divides into:
 - Proximal end
 - Shaft
 - Distal end.





Layers of Thigh

1. Skin.

2. Superficial fascia, Contains:

- 2 Superficial veins and their tributaries.
- Superficial arteries.
- Inguinal lymph nodes.
- Cutaneous nerves.

3. Deep fascia (Fascia Lata):

Like a trouser around the Thigh.

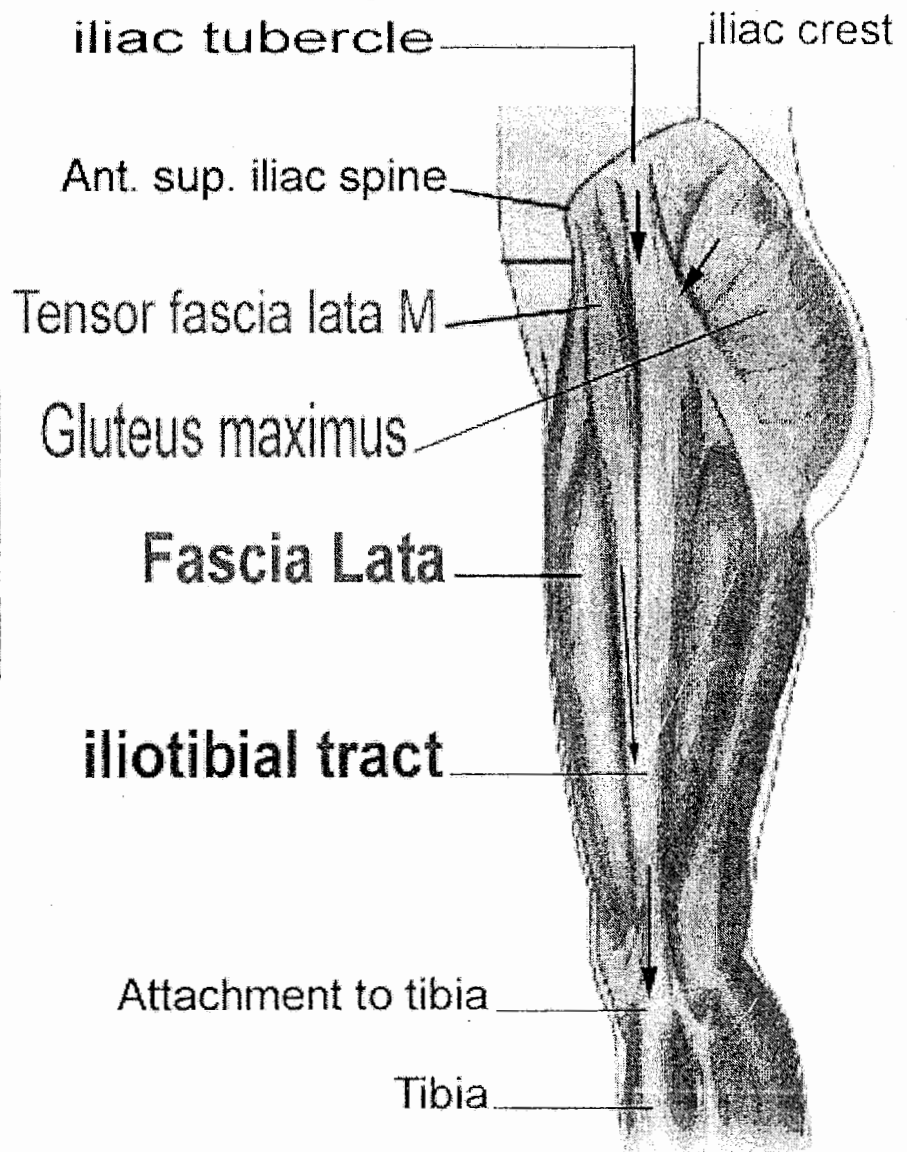
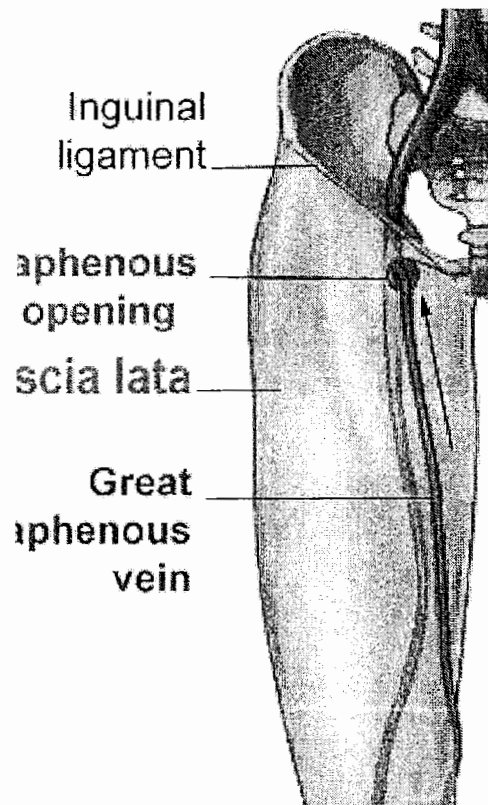
Has an opening in its upper medial aspect called **Saphenous opening**.

Thickened lateral as the **iliotibial Tract**.

Sends 3 Septa to the femur that divides the thigh into 3 Compartments:

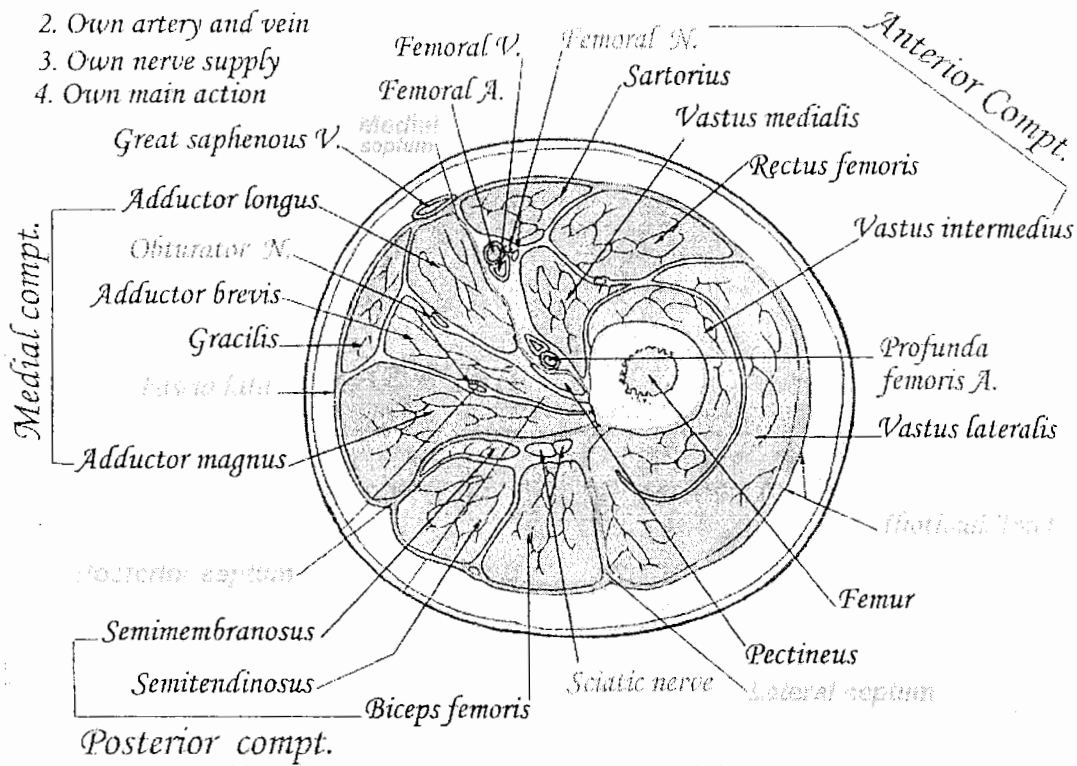
1. Anterior
2. Medial
3. Posterior

Each Compartment has its own muscles, nerve supply and arterial supply.



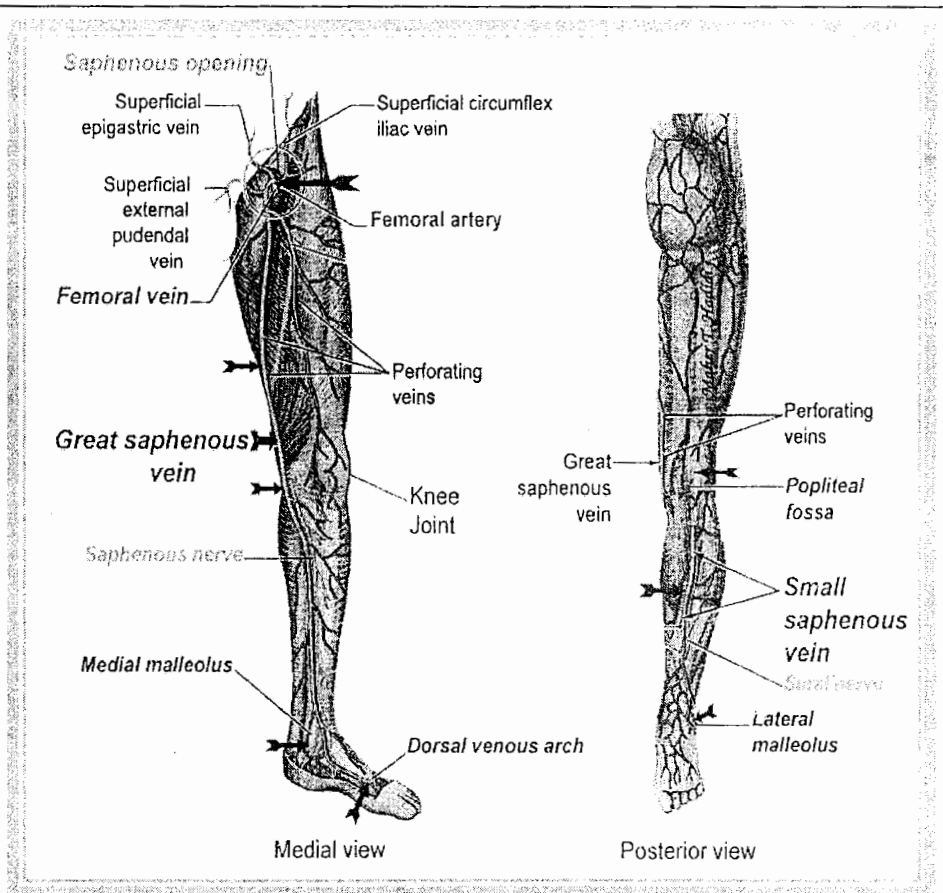
Deep fascia divides the thigh into 3 compartments by 3 septa where, each compt. has:

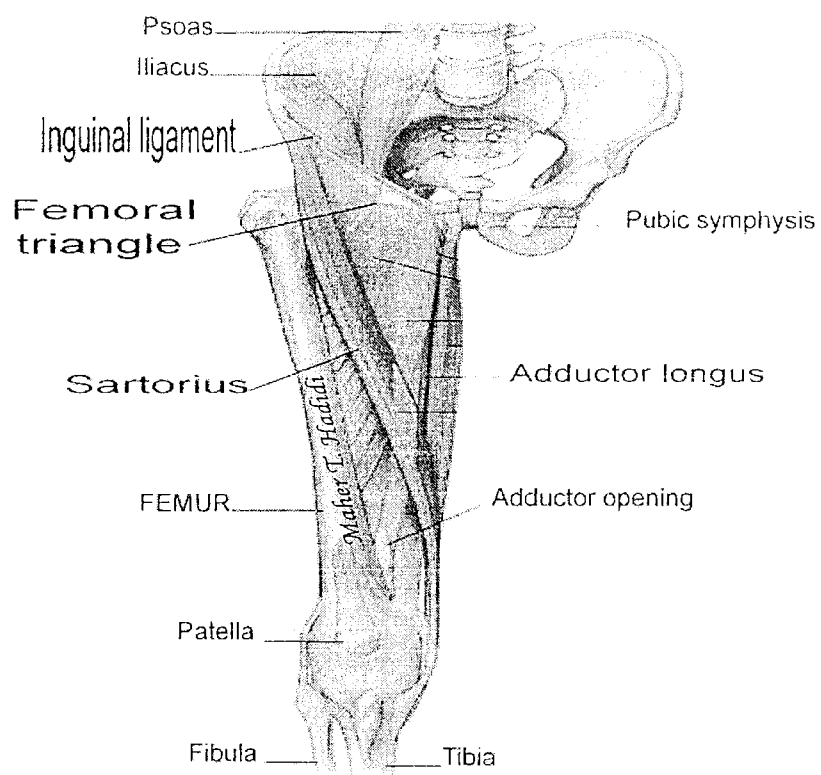
1. Its own muscles
2. Own artery and vein
3. Own nerve supply
4. Own main action



Superficial veins

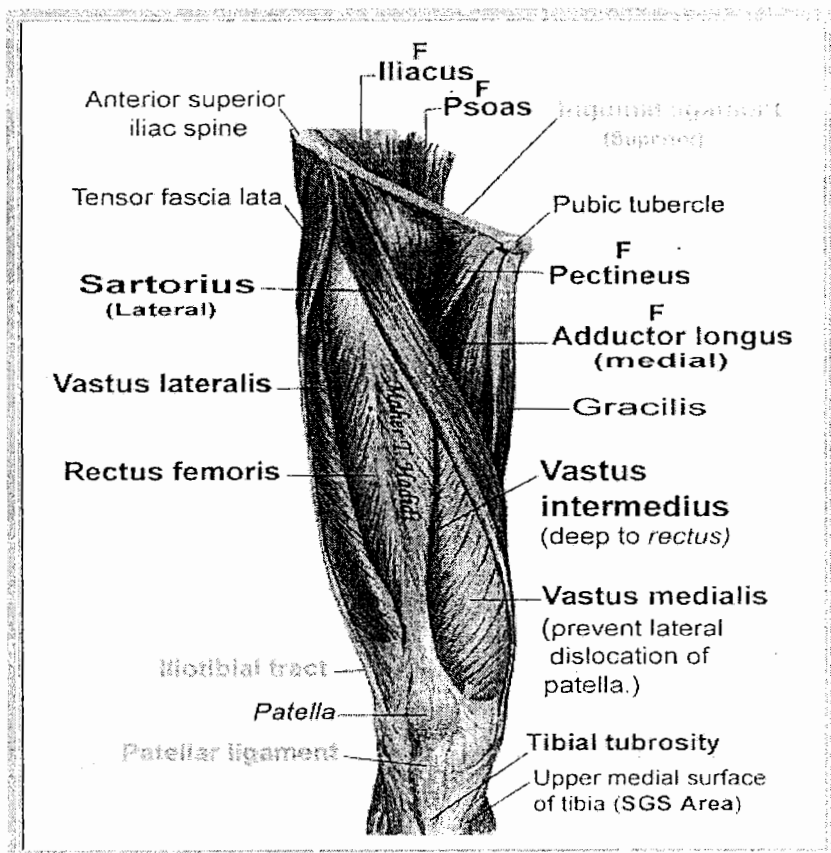
1. Great saphenous
 - Course
 - End
 - Tributaries
2. Small saphenous





Femoral Triangle

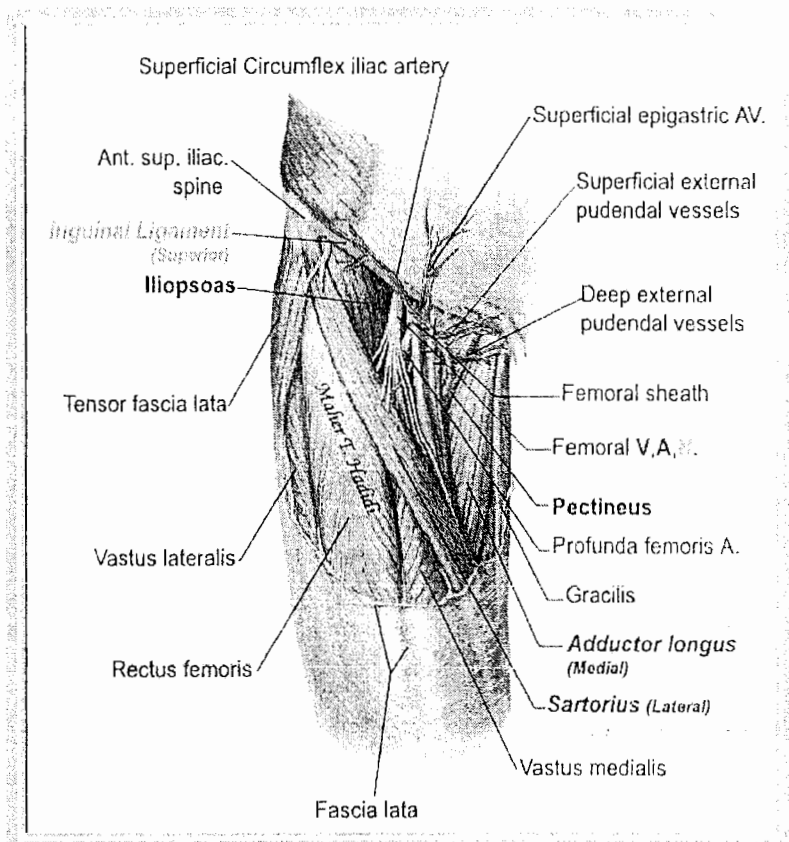
- Location
- Borders
- Roof
- Floor
- Contents

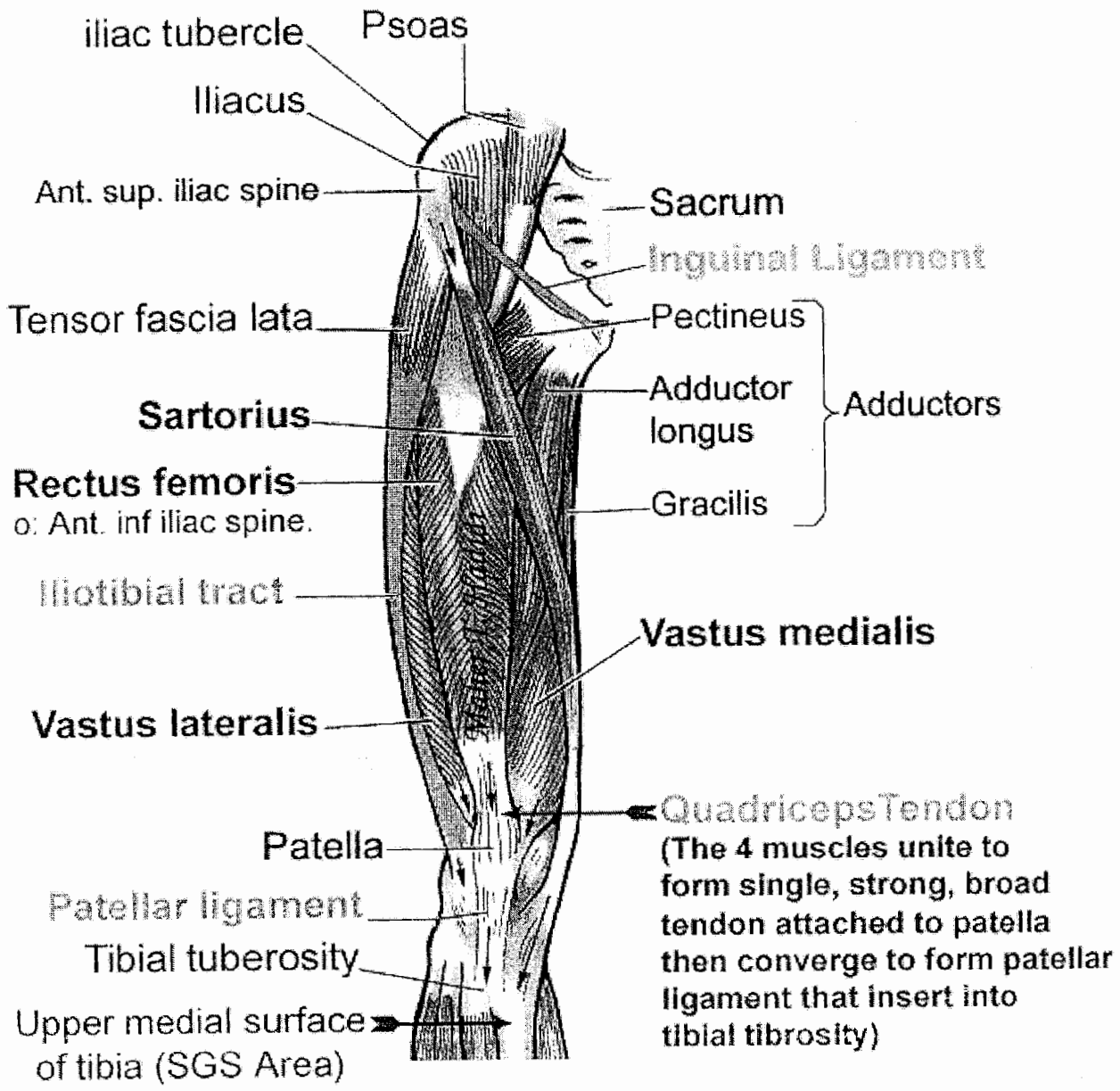


Femoral Triangle

Contents:

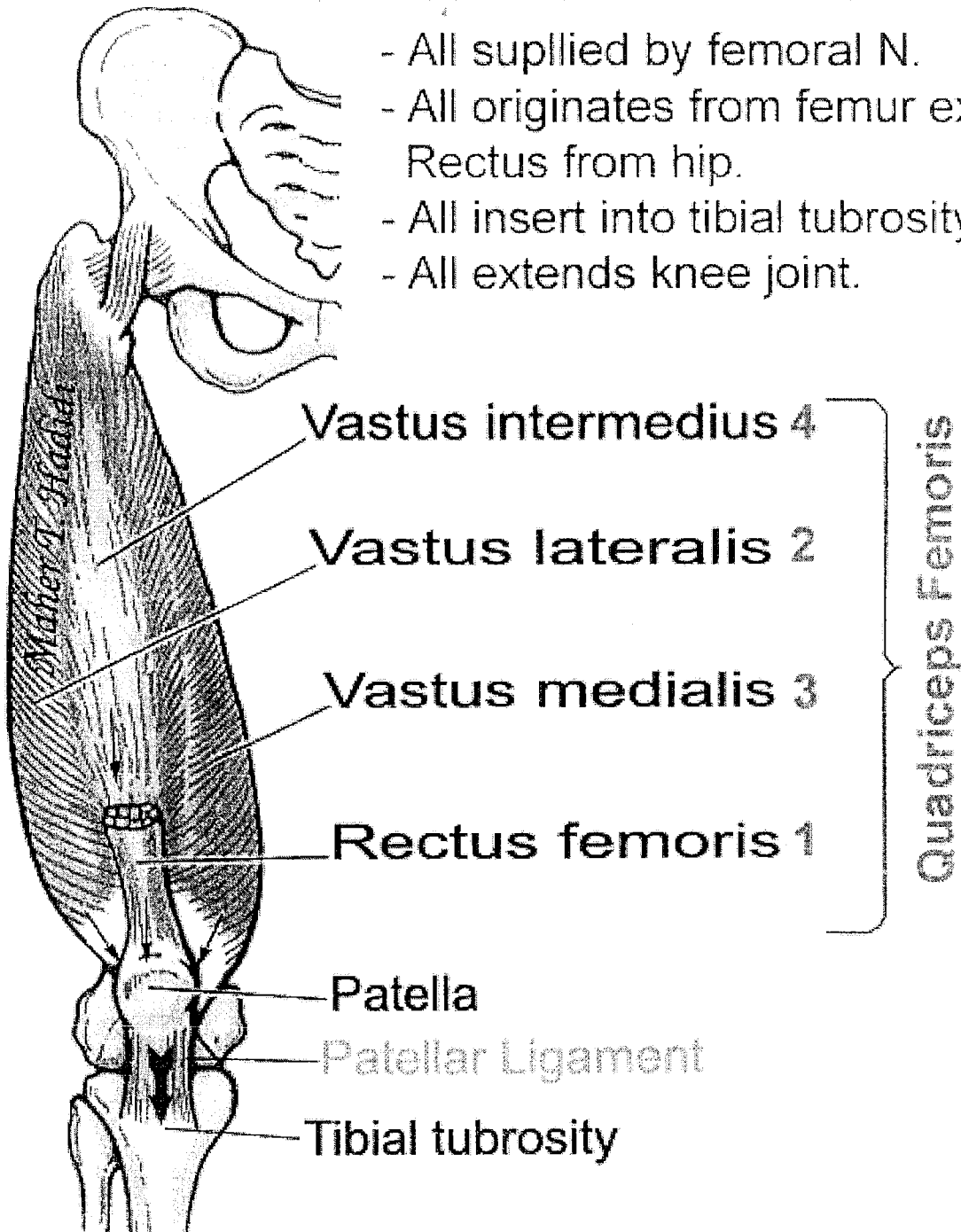
1. Femoral V
2. Femoral A
3. Femoral N
4. Deep inguinal lymph nodes.





Quadriceps femoris muscles

- All supplied by femoral N.
- All originates from femur except Rectus from hip.
- All insert into tibial tuberosity.
- All extends knee joint.



Psoas + iliacus are Prime flexors of hip joint.

Psoas

iliacus

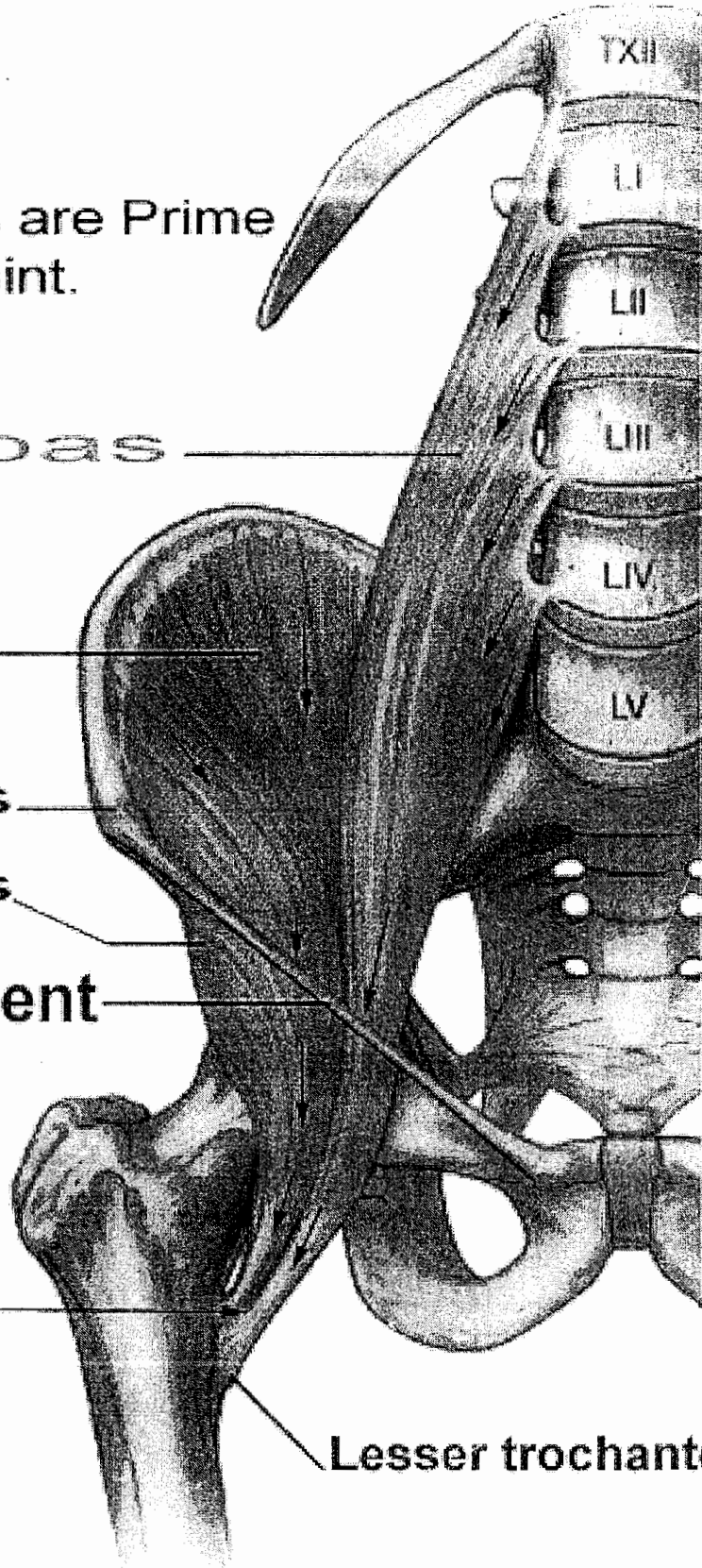
Asis

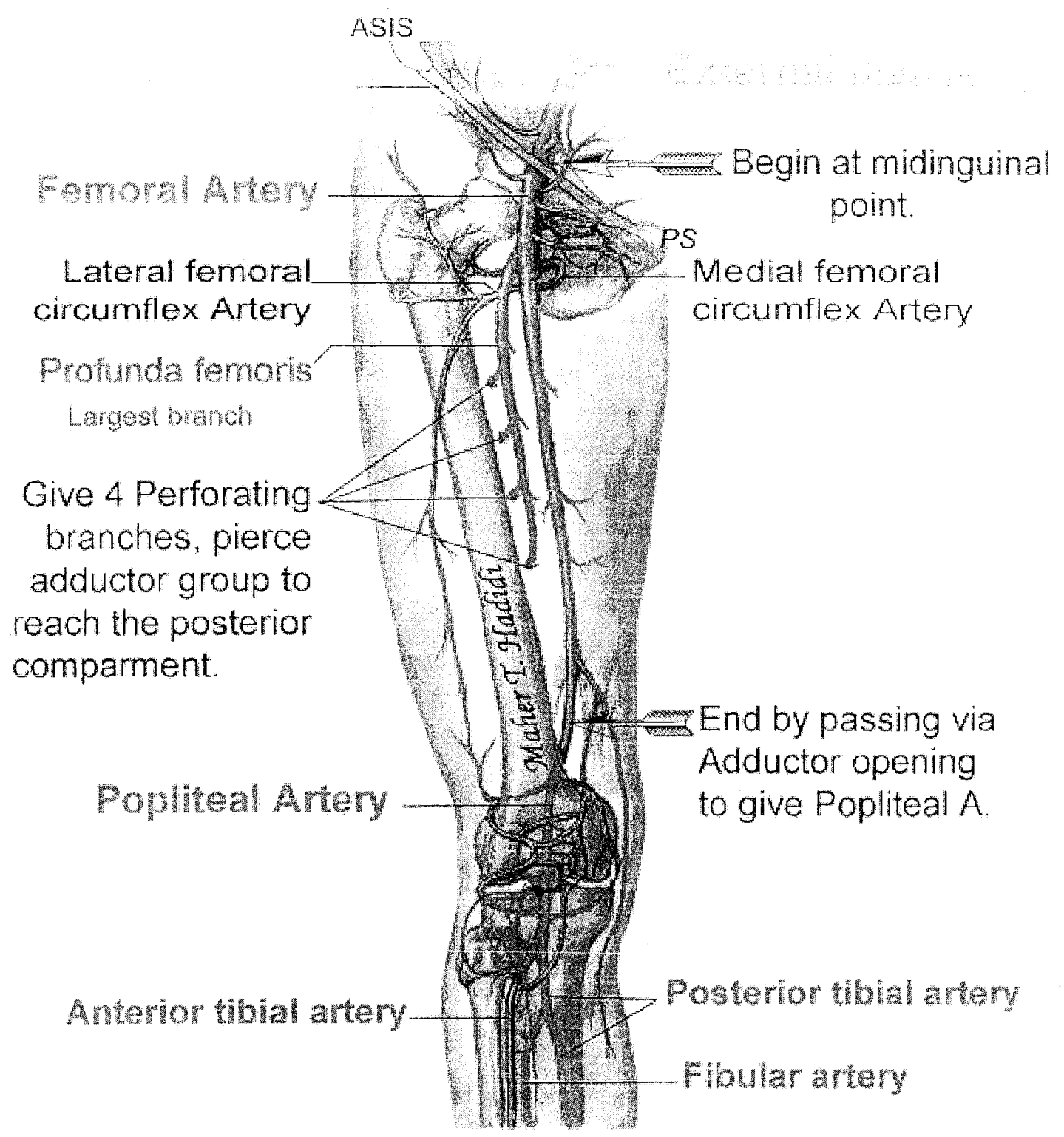
Aiis

Inguinal ligament

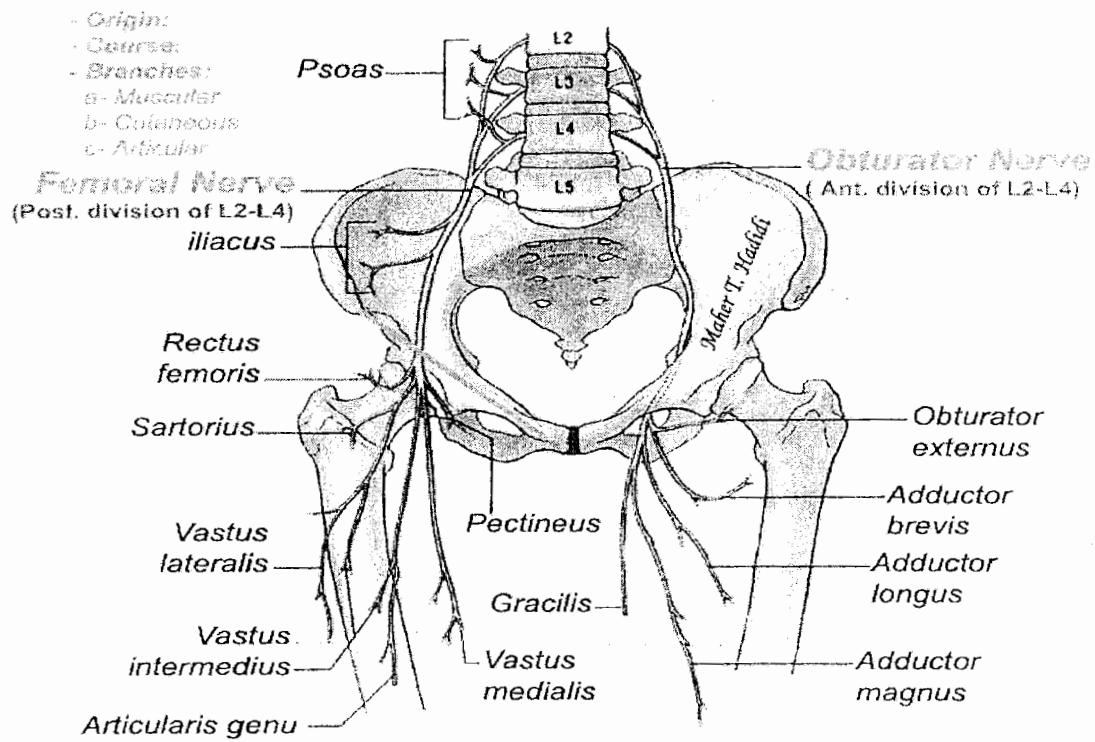
iliopsoas tendon

Lesser trochanter





Nerves of Lower Limb



Medial Compartment

