



ATTACHMENT I – General Qualifications

ANNUAL REQUEST FOR QUALIFICATIONS AND EXPERIENCE NO:
ADSP015-00004729

STATE PROCUREMENT OFFICE
Department of Administration
100 North 15th Avenue, Suite 201
Phoenix, Arizona 85007

(If a firm has branch offices, complete for each specific branch office seeking work.)

1. Annual Request for Qualifications

a. FIRM (OR BRANCH OFFICE) NAME:	AndersonBaron Landscape Architecture, LLC
b. FIRM (OR BRANCH OFFICE) STREET:	50 N McClintock Drive, Suite 1
c. FIRM (OR BRANCH OFFICE) CITY:	Chandler
d. FIRM (OR BRANCH OFFICE) STATE:	Arizona
e. FIRM (OR BRANCH OFFICE) ZIP CODE:	85226
f. YEAR ESTABLISHED:	2005
(g1). OWNERSHIP - TYPE:	LLC
(g2). OWNERSHIP - SMALL BUSINESS STATUS:	Small Business
h. POINT OF CONTACT NAME AND TITLE:	Andy Baron, Principal
i. POINT OF CONTACT TELEPHONE NUMBER:	480-699-7956
j. POINT OF CONTACT E-MAIL ADDRESS:	Andy.baron@andersonbaron.com
k. NAME OF FIRM (If block 1a is a branch office):	



ATTACHMENT I – General Qualifications

ANNUAL REQUEST FOR QUALIFICATIONS AND EXPERIENCE NO:
ADSP015-00004729

STATE PROCUREMENT OFFICE
Department of Administration
100 North 15th Avenue, Suite 201
Phoenix, Arizona 85007

2. EMPLOYEES BY DISCIPLINE

a. Discipline Title	b. Function: Primary (P) or Secondary (S)	c. No. of Employees - Firm	d. No. of Employees - Branch
Landscape Architect	P	22	20
Civil Engineer	P	1	0
Other	P	3	3
Total		26	23



ATTACHMENT I – General Qualifications

ANNUAL REQUEST FOR QUALIFICATIONS AND EXPERIENCE NO:
ADSP015-00004729

STATE PROCUREMENT OFFICE
Department of Administration
100 North 15th Avenue, Suite 201
Phoenix, Arizona 85007

3. PROFILE OF FIRM'S EXPERIENCE AND ANNUAL AVERAGE REVENUE FOR LAST YEAR

a. Approximate No. of Projects	b. Experience	c. Revenue Index Number (see below)
14	Area Master Planning	4
6	Commercial Building (low rise); Shopping Centers	1
1	Community Facilities	1
10	Cost Estimating; Cost Engineering and Analysis;	1
1	Dining Halls; Clubs; Restaurants	1
2	Educational Facilities; Classrooms	1
1	Hospital & Medical Facilities	1
1	Hotels; Motels	1
53	Housing (Residential, Multi-Family; Apartments; Condominiums)	5
37	Irrigation; Drainage	3
64	Landscape Architecture	5
4	Office Buildings; Industrial Parks	1
6	Outdoor Recreation	3
21	Zoning; Land Use Studies	4
3	Recreation Facilities (Parks, Marinas, Etc.)	4
1	Urban renewals; Community Development	1

PROFESSIONAL SERVICES REVENUE INDEX NUMBER

- | | |
|---|---|
| 1. Less than \$100,000 | 6. \$2 million to less than \$5 million |
| 2. \$100,000 to less than \$250,000 | 7. \$5 million to less than \$10 million |
| 3. \$250,000 to less than \$500,000 | 8. \$10 million to less than \$25 million |
| 4. \$500,000 to less than \$1 million | 9. \$25 million to less than \$50 million |
| 5. \$1 million to less than \$2 million | 10. \$50 million or greater |



ATTACHMENT I – General Qualifications

ANNUAL REQUEST FOR QUALIFICATIONS AND EXPERIENCE NO:
ADSP015-00004729

STATE PROCUREMENT OFFICE
Department of Administration
100 North 15th Avenue, Suite 201
Phoenix, Arizona 85007

5. EXAMPLE PROJECTS WHICH BEST ILLUSTRATE PROPOSED TEAM'S QUALIFICATIONS FOR THIS CONTRACT

(Present no more than five (5) projects. Complete one Section 5 for each project.)

a. TITLE AND LOCATION (City and State)	b. YEAR COMPLETED	
Gammage Parkway – ASU Tempe, AZ	PROFESSIONAL SERVICES January 2011- January 2014	CONSTRUCTION (If applicable) May 2014-August 2014 (Project Completion)

23. PROJECT OWNER'S INFORMATION

c. PROJECT OWNER	d. ORIGINAL BUDGET/NTE AMOUNT OF PROJECT	e. TOTAL COST OF PROJECT
ASU	\$470,000	\$466,000

f. BRIEF DESCRIPTION OF PROJECT AND RELEVANCE TO THIS CONTRACT (include scope, size, and length of project)

AndersonBaron has been working with Arizona State University since 2011. During this time, our projects have included the Master Plan for the Memorial Union and Changemaker Central Facility at the Memorial Union, and currently the Gammage Parkway Power Pedestal Study. Designs involve Placemaking theories in order to incorporate existing and new architecture, paving patterns, existing underground utilities, and preserve significant trees, in order to create the outdoor seating and congregation areas for students and faculty.

Services Provided: Prime Landscape Architect, Conceptual Design; Programming; Softscape Design; Circulation Studies; Analysis of Existing Plant Material; Master Planning, Site Planning, Landscape and Hardscape Design, Irrigation Design

Dates of Services: 2011 - Present



ATTACHMENT I – General Qualifications

ANNUAL REQUEST FOR QUALIFICATIONS AND EXPERIENCE NO:
ADSP015-00004729

STATE PROCUREMENT OFFICE
Department of Administration
100 North 15th Avenue, Suite 201
Phoenix, Arizona 85007

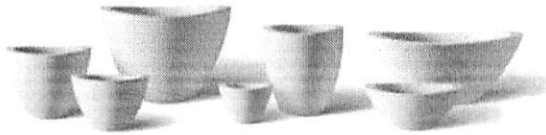




ATTACHMENT I – General Qualifications

ANNUAL REQUEST FOR QUALIFICATIONS AND EXPERIENCE NO:
ADSP015-00004729

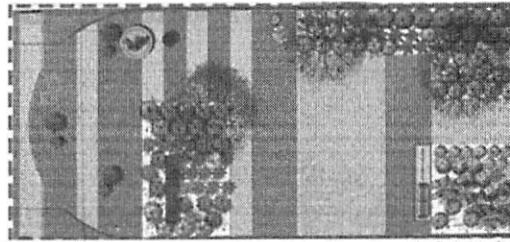
STATE PROCUREMENT OFFICE
Department of Administration
100 North 15th Avenue, Suite 201
Phoenix, Arizona 85007



pots - komegay - dune series - color to match power parazol pillaster concrete

Light Accent Bands

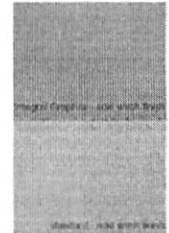
Finish: Akumilow 44 1/2 in Buff
Concrete: Standard concrete
with acid wash finish



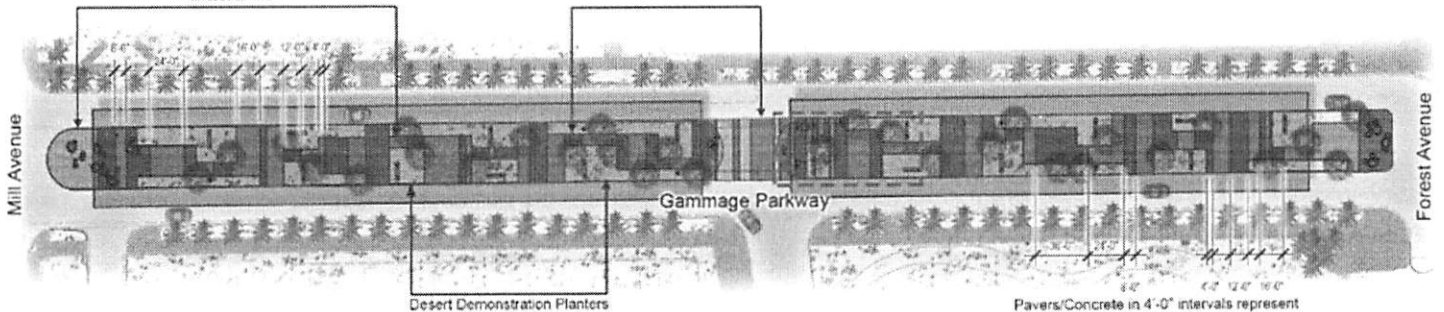
detailed plan view

Dark Accent Bands

Finish: Akumilow 44 1/2 in Charcoal
Concrete: Integral color Graphite
with acid wash finish



concrete samples

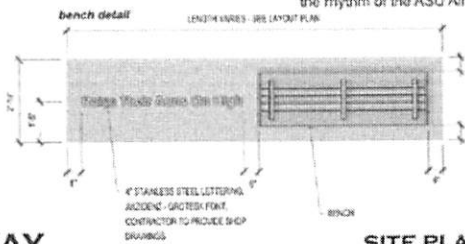


Desert Demonstration Planters

Pavers/Concrete in 4'-0" intervals represent
the rhythm of the ASU Alma Mater

*"Where the bold saguaros raise their arms on high praying
strength for brave tomorrows from the western sky where eternal
mountains kneel at sunset's gate here we hail thee,
Alma Mater Arizona State"*

-ASU Alma Mater



GAMMAGE PARKWAY

SITE PLAN

March 03, 2014
andersonbaron
plan design achieve
100 N 15th Avenue, Suite 201
Phoenix, Arizona 85007
PH: 602.995.7636 FAX: 602.995.7638



ATTACHMENT I – General Qualifications

ANNUAL REQUEST FOR QUALIFICATIONS AND EXPERIENCE NO:
ADSP015-00004729

STATE PROCUREMENT OFFICE
Department of Administration
100 North 15th Avenue, Suite 201
Phoenix, Arizona 85007

5. EXAMPLE PROJECTS WHICH BEST ILLUSTRATE PROPOSED TEAM'S QUALIFICATIONS FOR THIS CONTRACT

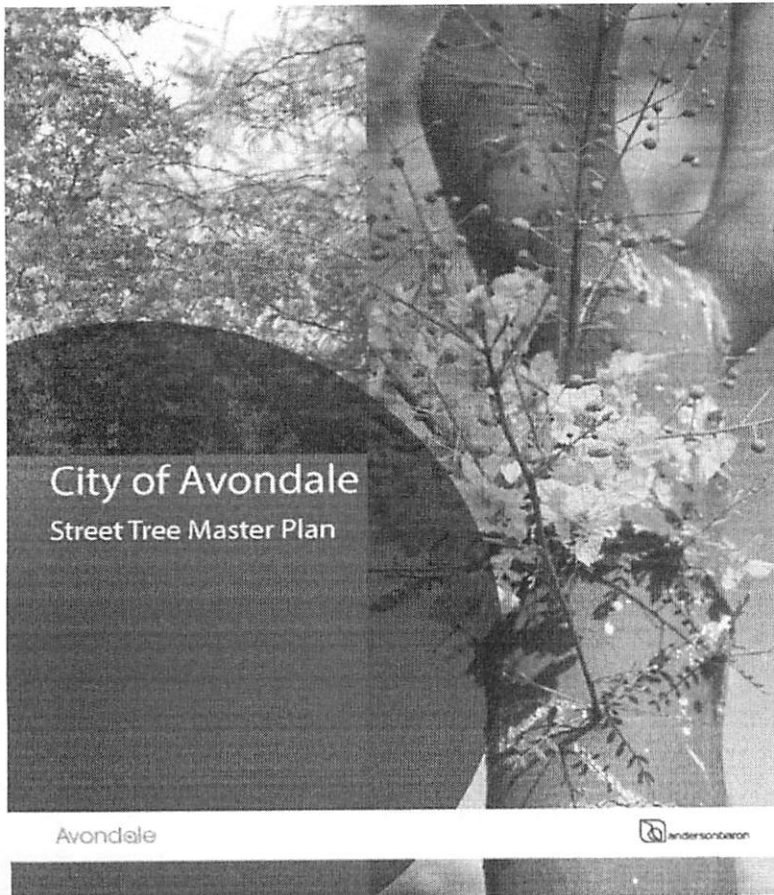
(Present no more than five (5) projects. Complete one Section 5 for each project.)

a. TITLE AND LOCATION (City and State) City of Avondale Street Tree Master Plan – Avondale, AZ	b. YEAR COMPLETED	
	PROFESSIONAL SERVICES January 2014 – Approved August 2014	CONSTRUCTION (If applicable) N/A

23. PROJECT OWNER'S INFORMATION

c. PROJECT OWNER City of Avondale	d. ORIGINAL BUDGET/NTE AMOUNT OF PROJECT \$50,000	e. TOTAL COST OF PROJECT \$50,000
--------------------------------------	--	--------------------------------------

Contract awarded in January of 2014 from the City's on-call consultant list for landscape architecture projects. This master plan included a street tree methodology, background, rationale and design intent for a primary and secondary street tree species (tree size, shape characteristics, shade properties, water requirements, and maintenance requirements) for arterial and collector streets within six identified character areas across 44.9 sq. mi of the City. This was approved August 2014, Adopted December of 2014 and then becomes part of standard guidelines.





ATTACHMENT I – General Qualifications

ANNUAL REQUEST FOR QUALIFICATIONS AND EXPERIENCE NO:
ADSP015-00004729

STATE PROCUREMENT OFFICE
Department of Administration
100 North 15th Avenue, Suite 201
Phoenix, Arizona 85007



Palo Verde spp. *Persea indica* spp.

Tree Height
Height to width 10 x 25'
Form Regular
Supercane Full sun, reflected sun
Water low
Tree Type Semi-deciduous
Growth rate Moderate
Lifespan 20-30 years
Approved Lists A-D&E

Street canopy Volume

- Provides shade for reduced energy
- Creates open air or canopy zone
- Useful in road lanes
- Shade, wind free

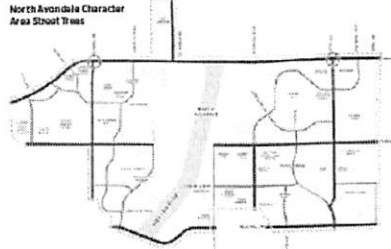


Blue Mesquite *Prosopis juliflora*

Tree Height
Height to width 10 x 20'
Form Round
Supercane Full sun
Water low
Tree Type Deciduous
Growth rate Moderate
Lifespan 20-30 years
Approved Lists A-D&E

Street canopy Volume

- Provides shade
- Useful in road lanes
- Shade, wind free

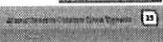


The North Avondale Character Area consists largely of established residential corridors with scattered pockets of existing residential and higher density residential, commercial, churches, and educational facilities, such as the Scottsdale Christian Community College campus. The Agua Fria River corridor bisects North Avondale into west and east portions.

Since the area is largely existing residential neighborhoods constructed over the past two decades, the structures, curb systems, landscape setbacks, and sidewalk characteristics vary throughout the aerial study. Overhead power lines exist along many of the aerial study roads, conflicting with the existing tree species in these areas. Collector streets offer the most consistency in terms of sidewalk locations, landscape setbacks, density and shade. The overall existing street tree canopy includes mature trees of varied species, with the opportunity to incorporate new plantings to supplement the existing street canopy. For a complete inventory of each aerial road segment, conditions, and specific recommendations, please reference Appendix B, North Avondale Character Area Inventory & Recommendations.

The Street Tree Master Plan defines primary and secondary trees for North Avondale to facilitate the entrance into the City of Avondale via the major north-south arterial roads of Avondale to Grand Central Road, and 157th Avenue. By accentuating the entrance at these major arterial roads that are the backbone of the City, they set the tone and provide the framework for a consistent streetscape throughout, creating a sense of place unique to Avondale.

The proposed tree palette will improve opportunities with the addition of trees between the curb and sidewalk supplementing the existing mature trees and filling the voids when as trees are present, to meet the current existing codes for right-of-way landscape. Overall, the Street Tree Master Plan ensures a consistent, shaded, and walkable environment in North Avondale. The following table outlines specific primary and secondary tree species recommendations per street or street segment in North Avondale.





ATTACHMENT I – General Qualifications

ANNUAL REQUEST FOR QUALIFICATIONS AND EXPERIENCE NO:
ADSP015-00004729

STATE PROCUREMENT OFFICE
Department of Administration
100 North 15th Avenue, Suite 201
Phoenix, Arizona 85007

5. EXAMPLE PROJECTS WHICH BEST ILLUSTRATE PROPOSED TEAM'S QUALIFICATIONS FOR THIS CONTRACT

(Present no more than five (5) projects. Complete one Section 5 for each project.)

a. TITLE AND LOCATION (City and State)	b. YEAR COMPLETED	
	PROFESSIONAL SERVICES	CONSTRUCTION (if applicable)
Vistancia North Master Planning Services- Peoria, AZ	9/2011 - Ongoing	N/A

23. PROJECT OWNER'S INFORMATION

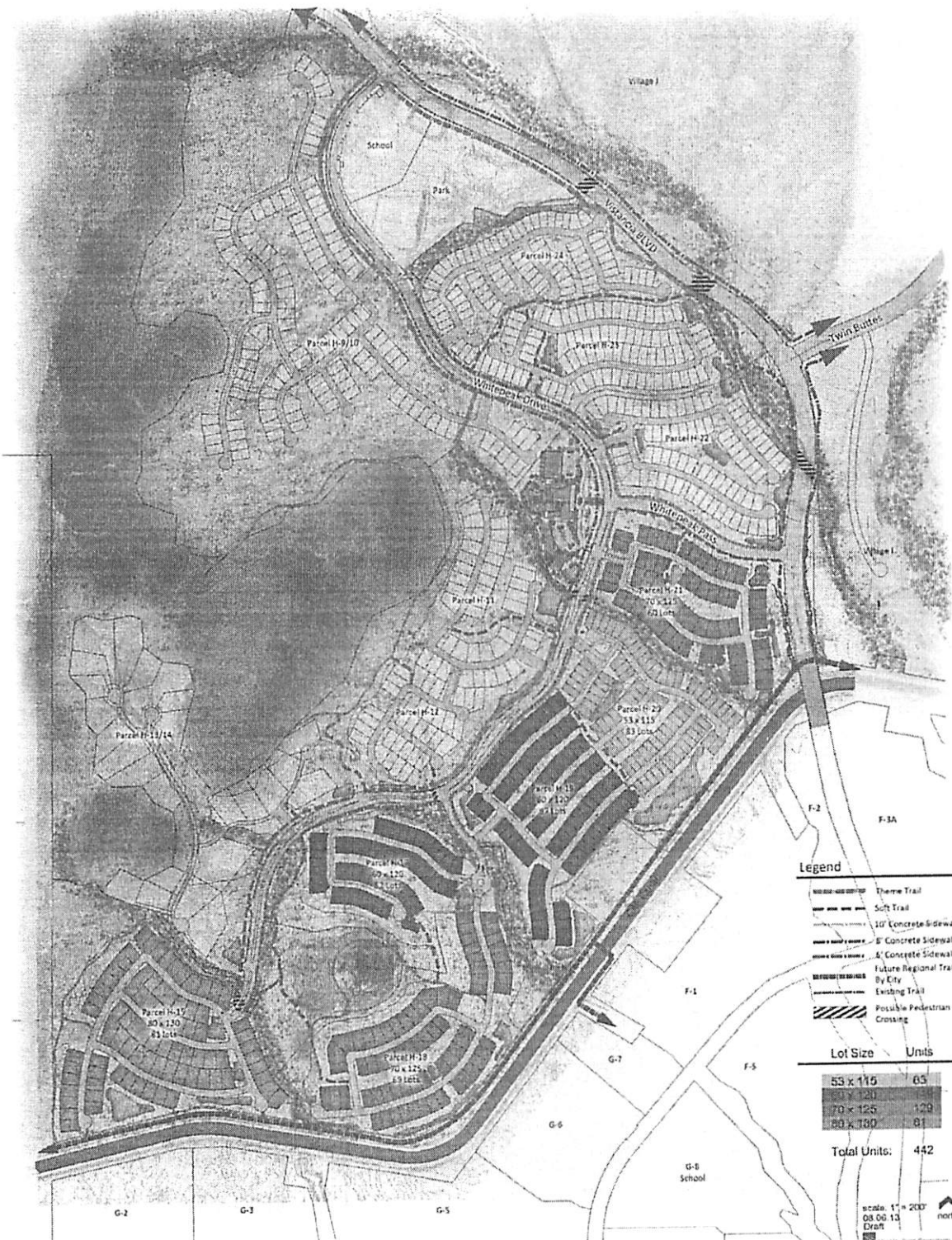
c. PROJECT OWNER	d. ORIGINAL BUDGET/NTE AMOUNT OF PROJECT	e. TOTAL COST OF PROJECT
Land Resources Inc.	\$400,000	\$310,000- ongoing

The Vistancia Master Planned Community is located in the northern region of Peoria, spanning over 7,100 acres. Vistancia is divided into two planned community districts known as Vistancia North and Vistancia South, and separated further into eight distinct development units, or "Villages".

Vistancia North is set in the natural Sonoran desert and scenic mountainous terrain, this portion of the Vistancia community will offer four lifestyle communities featuring up to 3,500 homes offering a diverse range of architectural styles and home sizes, community recreational centers, commercial space, a 900-acre mountain preserve, city parks and public schools.

The community is designed to embrace the character of the natural desert, anchored by stone with linear planes that will blend seamlessly into Vistancia's Sonoran desert backdrop.

Project responsibilities: Land Planning, 3D Grading, PAD & Zoning Entitlements Assistance, Conceptual Design, Signage, Site Planning, Community character & theming, water feature design, design guidelines, Construction Documentation and Construction Observation



- Legend**
- Theme Trail
 - Soft Trail
 - 10' Concrete Sidewalk
 - 8' Concrete Sidewalk
 - 4' Concrete Sidewalk
 - Future Regional Trail By City
 - Existing Trail
 - Possible Pedestrian Crossing

Lot Size	Units
55 x 115	65
60 x 120	75
70 x 125	129
80 x 130	81

Total Units: 442

Scale: 1" = 200'
 08.06.13
 Draft



VISTANCIA VILLAGE H PHASE 1





ATTACHMENT I – General Qualifications

ANNUAL REQUEST FOR QUALIFICATIONS AND EXPERIENCE NO:
ADSP015-00004729

STATE PROCUREMENT OFFICE
Department of Administration
100 North 15th Avenue, Suite 201
Phoenix, Arizona 85007

5. EXAMPLE PROJECTS WHICH BEST ILLUSTRATE PROPOSED TEAM'S QUALIFICATIONS FOR THIS CONTRACT

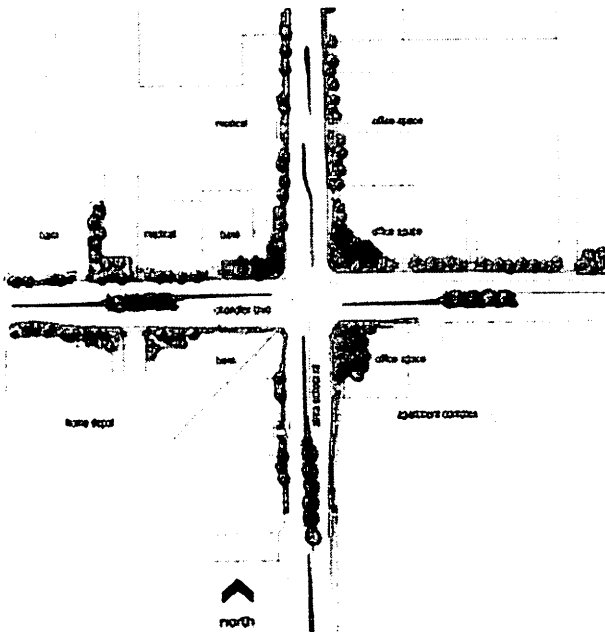
(Present no more than five (5) projects. Complete one Section 5 for each project.)

a. TITLE AND LOCATION (City and State)	b. YEAR COMPLETED	
Alma School/Chandler Boulevard Intersection Improvements – Chandler, AZ	PROFESSIONAL SERVICES 1/2011 - Current	CONSTRUCTION (If applicable) Still in design stages; no dates set yet; Budget Pending CIP Approval

23. PROJECT OWNER'S INFORMATION

c. PROJECT OWNER	d. ORIGINAL BUDGET/NTE AMOUNT OF PROJECT	e. TOTAL COST OF PROJECT
City of Chandler	\$472,000.00 Estimated Landscape Construction Costs	Est \$472,000

This City of Chandler intersection widening and improvements project will facilitate the tremendous increase in traffic flow between these two major arterial roads and increase its aesthetic appeal. Our services included Plant Inventory and Salvage Plan, Coordination of Plant Material Selection with the City Landscape Architect, and preparation of complete landscape and irrigation construction documents.





ATTACHMENT I – General Qualifications
ANNUAL REQUEST FOR QUALIFICATIONS AND EXPERIENCE NO:
ADSP015-00004729

STATE PROCUREMENT OFFICE
Department of Administration
100 North 15th Avenue, Suite 201
Phoenix, Arizona 85007

5. EXAMPLE PROJECTS WHICH BEST ILLUSTRATE PROPOSED TEAM'S QUALIFICATIONS FOR THIS CONTRACT

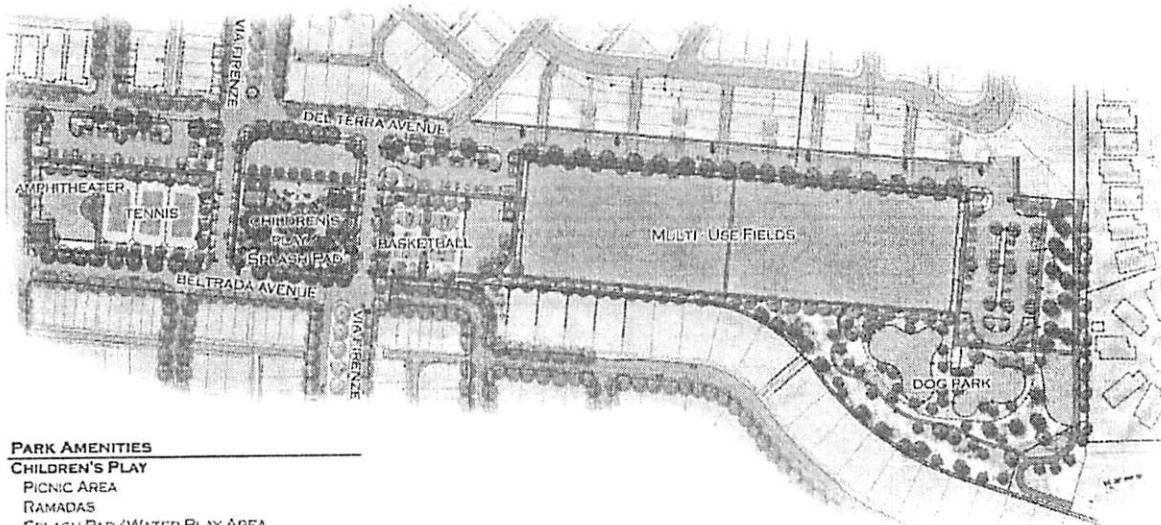
(Present no more than five (5) projects. Complete one Section 5 for each project.)

a. TITLE AND LOCATION <i>(City and State)</i>	b. YEAR COMPLETED	
	PROFESSIONAL SERVICES	CONSTRUCTION <i>(If applicable)</i>
Capriola Park – Henderson, NV	11-2012/11-2014	1/2014-9/2014

23. PROJECT OWNER'S INFORMATION

c. PROJECT OWNER	d. ORIGINAL BUDGET/NTE AMOUNT OF PROJECT	e. TOTAL COST OF PROJECT
City of Henderson	\$6.8M	\$7.35M with owner approved change orders

Capriola Park recently finished construction in Henderson, NV. This is one of the many parks dedicated to the City of Henderson of the intricate parks and trails master plan for the Inspirada Development. Capriola Park will total more than 12.5 acres! These parks include community pools, dog parks, skate parks, full-sized sport courts and fields, and are each themed individually for play amenities (such as musical instruments and sensory "free play" elements).




PARK AMENITIES

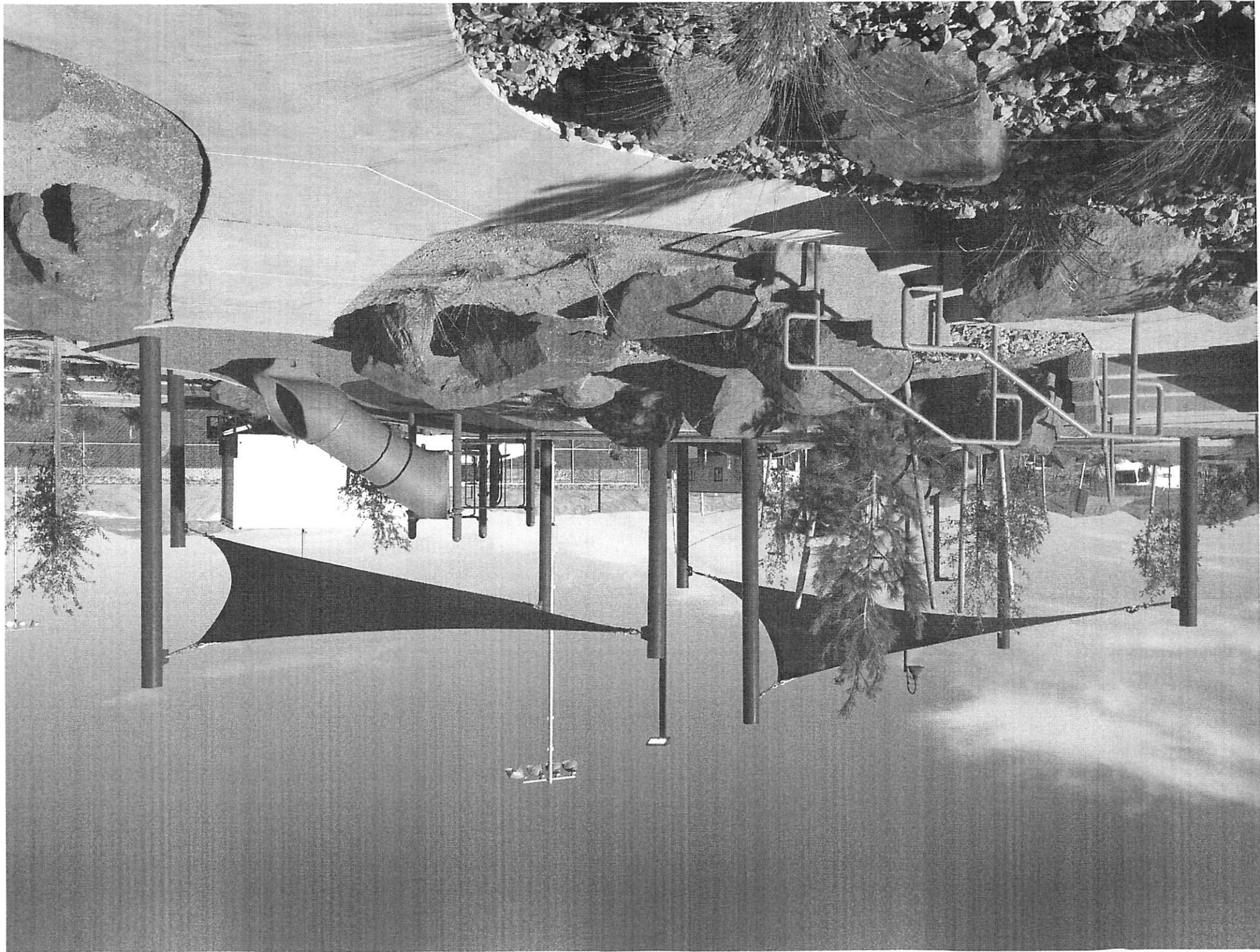
- CHILDREN'S PLAY**
- PICNIC AREA
- RAMADAS
- SPLASH PAD/WATER PLAY AREA
- CHILDREN'S PLAY SYSTEM WITH TENSILE SHADE
- RESTROOMS
- 3 TENNIS COURTS**
- 2 SOCCER/MULTI-USE SPORT FIELDS**
- RAMADA
- DOG PARK**
- 2 BASKETBALL COURTS**
- AMPHITHEATER**
- MULTI-USE TRAIL**

INSPIRADA
 11200 N. GARDEN AVENUE, SUITE 100, PHOENIX, AZ 85021
 602.954.1100
 www.inspiradadevelopment.com

INSPIRADA

CAPRIOLA PARK
 02/11/2014










ATTACHMENT I – General Qualifications

ANNUAL REQUEST FOR QUALIFICATIONS AND EXPERIENCE NO:
ADSP015-00004729

STATE PROCUREMENT OFFICE
Department of Administration
100 North 15th Avenue, Suite 201
Phoenix, Arizona 85007

6. ADDITIONAL INFORMATION

a. PROVIDE ANY ADDITIONAL INFORMATION YOU FEEL MAY BE NECESSARY TO DESCRIBE YOUR FIRMS QUALIFICATIONS. (ATTACH ADDITIONAL SHEETS AS NEEDED.)

7. ANNUAL AVERAGE PROFESSIONAL SERVICES REVENUES OF FIRM FOR LAST 3 YEARS

a. Percentage of Total Work Attributable to State, Federal and Municipal Government Work:	15%
b. Percentage of Total Work Attributable to Non-Government Work:	85%

8. AUTHORIZED REPRESENTATIVE. The foregoing is a statement of facts.

Signature: Andy Baron Date: 12/30/14

Name: Andy Baron Title: Member

4. Resumes of Key Personnel Proposed for this Contract Brett Anderson



Education

B.L.A. Landscape Architecture
University of Arizona, Tucson

Registrations

Arizona (31268)
Nevada (709)
California (4309)
Utah (63575834-5301)
Tennessee (883)
CLARB (7594)

Brett H. Anderson, ASLA, | Principal AndersonBaron Landscape Architecture, LLC plan • design • achieve

Brett is one of the founding Principals of AndersonBaron, having more than 25 years' experience in the field of landscape architecture. A graduate of the University of Arizona with a Bachelor of Landscape Architecture, Brett provides a unique artistic vision to everything he creates. His goal is to fully understand each place he creates and is predicated by his effort to allow the process to naturally unfold. Brett's work substantiates his belief that, while process alone cannot ensure a memorable place, innovation, experience, and an understanding of the beauty and art of the land are paramount to its ultimate success.

Over the course of his career, Brett has been a leader in the promotion of native plant material, sustainable design, and placemaking. Having worked closely with governmental entities and diverse groups on projects requiring restoration and the use of indigenous materials, Brett has an intricate knowledge of plant materials and their successful applications. His progressive understanding of the indigenous areas and its unique urban environment allows him to identify and approach each project based on its individual and varied settings. Brett approaches his work with a great respect for the importance of meeting societal needs, furthering his belief that history, technology, societal values, and sustainability should drive design solutions.

Brett's artistic, contemporary desert design, creative bio-ethnic gardens and use of sustainable materials have established him as a leader in the design community. His successful collaboration with other well-known architects, developers, homebuilders, and governments in bringing unique places to fruition has set the bar high for others in the design industry. His vast experience includes regional, national, and international designs for public and private gardens, large roadway infrastructure, master-planned communities, urban developments, resorts, industrial parks, and solar plants. Whatever the scale or detail, Brett takes pride in his passion for making unique places.

PROJECT EXPERIENCE:

URBAN DESIGN

Arizona State University

Mr. Anderson has served on the University's on-call list for landscape architects since early 2011. During this time he's been able to work on such projects as the redesign of the existing Changemaker Central at Arizona State University's main campus in Tempe: a high traffic corner entrance to a portion of the Memorial Union Building at the heart of ASU's campus with much historical significance. This design incorporated Placemaking theories in order to incorporate existing and new architecture, paving patterns, existing underground utilities, and preserve significant trees, in order to create the outdoor seating and congregation areas for students and faculty between classes, during meals, or simply enjoying an outdoor study session. The designed was based on the Memorial Union Master Plan, which AndersonBaron was also responsible for. Mr. Anderson was also responsible for the new urban environment known as the "ASU Power Parasol Park", which is a marriage between the Power Parasol and an urban park. This new urban environment integrates a variety of users, events and culture with modern technology to create a rich environment with flexible programming, unique wayfinding opportunities, and endless combinations of experiences. The Power Parasol Park is the thread that weaves together ASU's academic culture with the surrounding community, becoming a nexus of activity and enriching the lives of those who use it.

Desert Botanical Garden

Within this notable destination, we worked to provide a new and improved trail system throughout the garden. Trails were designed without impact to historic plantings, along with educational kiosks, wayfinding and educational signage, bridges and lighting design. The trail system accounted for connections to existing and proposed garden improvements while providing a thoughtful and serene experience.



50 n mcclintock drive, suite 1
chandler, arizona 85226
p: 480.699.7956
f: 480.699.7986
andersonbaron.com

Brett H. Anderson
Professional Resume
Page 2

Professional Associations

- Chandler Planning & Zoning Commission (2002-2008)
- Chandler Parks & Recreation Board (1996-2002)
- American Society of Landscape Architects
- Projects for Public Spaces
- Downtown Chandler Community Partnership
- Arizona Trails Association
- Valley Partnership
- Volunteers for Outdoor Arizona

Waters at Ocotillo

Located within the heart of one of Chandler, Arizona's most desirable master plans, The Waters at Ocotillo was designed to reflect the elegance of historic Santa Barbara. Wooden arbors, tiled water features, orange orchards and flowing bougainvillea accentuate this lovely multi-use center. The surrounding lakes at Ocotillo provide re-use water that enables a lush landscape and a respite from the desert environment. Water features circulate throughout the site and penetrate the intimate courtyards for a calming pedestrian experience.

Liv Avenida

Designed to emulate a resort atmosphere, Liv Avenida is an apartment complex located in southeast Chandler, Arizona. The project was designed to offer sophisticated living in a lush, tropical setting with resort-level pools, impressive water features, intimate garden spaces, and expansive greenbelts bordered by colorful plant palettes. The use of flowing groundcover and extensive shade trees adds to the tropical experience, creating an oasis in the desert for residents and visitors.

Orbital Science Center

This LEED Silver science building project recently completed its ribbon-cutting ceremony. Situated on 5 acres at the northwest corner of a rapidly developing area in Chandler, Arizona known as Downtown Ocotillo, the site includes an entry water feature, parking lot, parking garage, deck planting, and an effluent water system. Responsibilities for this project included placemaking and urban design, sustainable landscape design, and design and documentation for all site amenities, hardscape, landscape, and construction observation.

Tucson Maingate

This urban space at the entry to the University of Arizona in Tucson, Arizona, includes office, hotel, and commercial development, as well as themed restaurants. Specialty hardscape, site furnishings, and urban landscape unify this project, establishing a core center for working, shopping and dining in the university area.

Chandler/Gilbert Community College Environmental Technology Center

Partnering with a local architect and Construction Company, AndersonBaron is currently providing planning, design, and construction observation services for the new Environmental Technology Center to be located at Chandler/Gilbert Community College. This facility is currently in its design and planning phase and will be part of an outdoor classroom representing a variety of environmental processes. The facility will detail the latest technology relating to solar and wind energy, water harvesting, and drought-tolerant plant material containing vegetable gardens, flowering groundcover, herbs and demonstration areas. The center will provide a low-impact and cost-efficient living classroom that will serve as a hub for environmental education and resources for CGCC students, local schools, non-profit programs, and community members

DARTS Building

Gabor Lorant Architects was commissioned with updating the historic DARTS building, which was originally constructed in 1969 as an award-winning mid-century modern facility. GLA and Mr. Anderson updated the facility with sustainable features, including a sophisticated and efficient variable refrigerant flow HVAC system, double-glazed replacement windows and enhanced insulation, and native, low-water use landscaping. With 25% of its new construction material consisting of rapidly renewable and recycled materials and more than 70% of the construction waste stream recycled, this noteworthy renovation has been submitted to the U.S. Green Building Council for LEED Platinum certification.

Alta Montecito

This high-density, multi-family housing community in Las Vegas, Nevada, was designed with substantial amenities, including a community pool, children's play facilities, shaded seating areas, and sport courts. Indigenous, low-water use plantings and dense tree shading, along with accents of color and texture, were utilized to reflect the community's desert resort theme. Responsibilities for this project included both hardscape and landscape layout design.



50 n mcclintock drive, suite 1
chandler, arizona 85226
p: 480.699.7956
f: 480.699.7986
andersonbaron.com

Brett H. Anderson
Professional Resume
Page 3

Honors & Awards

American Planning Association:

- Project of the Year, 1991: Pueblo Grande Museum, Phoenix, Arizona
- Community Development, 1995 "The Vision", Gila River Indian Community, Phoenix, Arizona

Governor's Pride in Arizona:

- Environmental Leadership, 1994: ASU Desert Arboretum Park

Valley Forward Association:

- Crescordia, 1995: Environmental Education
- Tierra Buena at Lowell Elem. School, Phoenix, AZ: Merit, 1995
- Site Development and Landscape, Parks & Plazas, Phoenix, Arizona

Nevada Recreation & Parks Society

- Elmer H. Anderson Parks Excellence, 2008: City and Community Park of the Year Esselmont Park, Henderson Nevada
- Elmer H. Anderson Parks Excellence, 2011: City and Community Park of the Year Madeira Canyon Park, Henderson Nevada

Gila River Indian Community

Several projects within the Indian community southwest of the Phoenix metropolitan area included a community visioning program, a master plan of two casino site areas, and the design and construction documents for the casinos and adjacent themed streetscapes and plazas.

The Arroyo

The Arroyo is a 420-acre mixed-use development in Las Vegas, Nevada. This project, designed with a comprehensive approach to incorporate theme throughout, includes a power center, office complexes, and industrial park developments. Landscape, signage, and hardscape elements are used throughout the project to create strong uniformity.

Chandler Center

Located in Chandler, Arizona, Chandler Center is a 50-acre mixed-use development which includes a hotel, commercial and office buildings, and apartments and condominiums. This unique Andalusian-style village includes various plazas, water features, lakes, a recreation center, and pools and spas, all linked by a pedestrian trail system.

Dr. A.J. Chandler Park

Established nearly a century ago, Dr. A.J. Chandler Park is a unique town square and city park that was once the center of commerce for the Phoenix suburb. Located in historic downtown Chandler, this park has seen many revitalization efforts throughout the years. AndersonBaron has been entrusted with restoring the historic nature of the park while incorporating new retail and office edges. Pedestrian plazas, event spaces, interactive water features, signage, art and historic artifacts, and a revitalized landscape are all incorporated into the new park design. The historic values in the design emphasize the sense of place for the downtown atmosphere, creating a timeless elegance.

ADDITIONAL URBAN PROJECTS

- ASU Desert Arboretum – Tempe, Arizona
- Consolidated Canal – Chandler, Arizona
- Tierra Buena Educational Garden – Phoenix, Arizona
- The Fountains at Le Cholla Alzheimer Garden – Phoenix, Arizona
- Torii Hunter Field at Kraemer Memorial Park – Placentia, California
- ASU on call services for various Landscape Architecture projects 2011 & 2012 – Tempe, Arizona
- ASU Sun Devil Plaza – Tempe, Arizona
- Laird and Dines Building on Mill Avenue – Tempe, Arizona
- Teton County Library – Jackson Hole, Wyoming
- Temple Kol Ami – Scottsdale, Arizona
- New Life Church – Phoenix, Arizona
- Pueblo Grande Museum and Archeological Park Master Plan – Phoenix, Arizona
- UofA Graduate Student Housing – Tucson, Arizona
- Alta Montecito Apartments – Las Vegas, Nevada
- Alta Deer Valley Apartments – Phoenix, Arizona
- Liv Ahwatukee – Phoenix, Arizona
- Liv Northgate – Gilbert, Arizona
- Renaissance – Sun Lakes, Arizona
- Archstone at DC Ranch – Scottsdale, Arizona
- Grandfamilies Place – Phoenix, Arizona
- The Blue on 12th – Phoenix, Arizona
- The Village at 48 West – Allendale, Michigan
- Vive – Chandler, Arizona
- Poston Butte at Anthem Merrill Ranch – Florence, Arizona



50 n mcclintock drive, suite 1
chandler, arizona 85226
p: 480.699.7956
f: 480.699.7986
andersonbaron.com

Brett H. Anderson
Professional Resume
Page 4

Honors & Awards

Valley Forward Association

- Crescordia, 1996: Large Scale and Community Development, Sonoran Cottages at Desert Mountain, Scottsdale, Arizona

Pacific Coast Builders Association

- Merit Award, 2002: Anthem Country Club, Henderson, Nevada

National Sales & Marketing Council

- 2008 Best Landscape Design for an Attached Community
- Vita Bella at Lake Las Vegas, Toll Brothers, Inc.

American Society of Landscape Architects

- Nevada ASLA Commercial Development 2008: The Arroyo, Las Vegas, Nevada

Planning & Community Design

Cane Island, Katy, TX

Ground broke on the first master-planned community in Katy, Texas early February 2014: Cane Island. This 1,500-acre master plan will be home to approximately 3,000 households with a recreation center, six parks, and a series of interconnected lakes throughout the development to help with flood detention to be constructed over the next 10 years. The parks were designed to honor Katy's local heritage with themes of cattle ranching, rice farming, the oil and gas industry, and the railroad industry. Residents are going to be able to interact with the fish-stocked lakes that meander throughout the community and tie into the parks systems.

Eastmark

Eastmark is the first large-scale integrated housing community to open in the Phoenix area in a decade. It covers five square miles in East Mesa near Ray and Ellsworth roads at the former General Motors Proving Grounds. The human connection and way of life are central and vital elements when Eastmark began its conceptual planning. The "big picture" was truly centered on how people want to live today, and how to provide a unique community that feels like home. Since the inception of Eastmark in 2008, AndersonBaron has been involved in the community theming and design. From the neighborhood parks to the richly designed streetscapes, our goal was to design a place where families can come together for activities, play, and socialization with unique identities that are designed to withstand the tests of time.

Vaquero Ranch

This charming neighborhood provides the perfect backdrop for intimate family gatherings. With just 74 select home sites, this community was carefully crafted to address the unique needs, preferences and lifestyles of post-recession Arizona homebuyers with more convenience, more connectivity and more choices. The main entrance opens to a beautiful park offering a unique selection of innovative amenities for every age. Homes face the park as if it is an extension of their own front yards. The north end of the park includes game tables, lounge chairs, a community rose garden, and a prep-table with lockers below for shared play equipment like bocce balls or yoga mats that can easily be used on the adjacent lawns. The southern portion of the park is dedicated for a youthful audience with sand and water tables, clubhouses, and free play climbing structures. A stage opens up to the vast green lawn for impromptu performances.

Coyote Springs

Located just outside of Las Vegas, Nevada, this 42,000-acre master planned new city includes a new PGA training facility for the west coast, a Jack Nicklaus signature golf course (with others planned), recreation facilities, urban core and commerce district and resorts. With the first five villages comprising nearly 29,000 potential residents, Coyote Springs will become a large, diverse community, offering a variety of home styles and lifestyles. Responsibilities within the project include master landscape architect for community character and theming, site planning, streetscapes, parks, open spaces, entry monumentation, construction administration, design guidelines, water feature design, and signage.

Anthem Mesquite

This master-planned golf course community located in Mesquite, Nevada is a settlement containing over 2,800 acres of space reflecting the heritage of the built environment by blending the flavor of the historical ranches of Southern Nevada with the context of a scenic desert resort. Indigenous and low-water use plantings, natural stones and metals, and accents of color and texture are mixed to create the sustainable landscape and ranch settlement atmosphere. Project responsibilities include site planning and landscape architecture for the entries, streets, open spaces, parks, and clubhouses, and golf.

Anthem Henderson

Located in Henderson, Nevada, this master-planned residential and active adult golf course community that includes a country club, conventional neighborhoods, and both the Sun City and Solera Active Adult Communities. Project responsibilities include site planning and landscape architecture for the entries, streets, open spaces, parks, and clubhouses, and golf.



50 n mcclintock drive, suite 1
chandler, arizona 85226
p: 480.699.7956
f: 480.699.7986
andersonbaron.com

Aliante

This master planned residential and active adult golf course community is located just north of Las Vegas, Nevada. Project responsibilities include site planning and landscape architecture for the streets, open spaces, clubhouse, athletic club and golf.

D.C. Ranch

A community located in Scottsdale, Arizona that caters to an exclusive lifestyle offering multiple elements including single and multi-family housing, golf courses, recreation facilities, a commerce district, and resorts. The area was designed to facilitate year-round activity, and encourage community connectedness through its amenities. Special attention was given to creating intimate spaces that could be arranged to function for both small and large events. The project included site planning, water feature design, landscape and irrigation design, parks, open spaces, construction documentation and construction observation.

Desert Trails

Strategically set within view of the dramatic White Tank Mountains, Desert Trails was designed with a village core concept. This property is divided into five separate parcels by three major wash corridors, which provided a unique design platform for extensive community amenities. Signature trail systems, two regional trailheads, a 35-acre regional park, 214 acres of open spaces, and equestrian access comprise this community creating a cohesive blend of individual neighborhoods, parks, and open spaces. At the core of this development is a major plaza area featuring disc golf, a pool, exercise facility, farmers market, and an amphitheater. Themed neighborhood gardens offer bird watching, climbing, community gardening, and other activities, all designed to provide unique opportunities to connect families and neighbors, set against a backdrop of spectacular mountain views.

Estrella Mountain Ranch

Mr. Anderson has worked on many projects within this 8,000 acre master planned community in Goodyear, Arizona over the past 10 years. This includes the theming of Montecito and the design of several neighborhoods and roadways in Mountain Ranch and the Golf Village. To establish a new unique character within a community started over 20 years, Mr. Anderson identified the strengths of the project and analyzed current issues. The result was the framework for development of unique identifiable villages that could live with current trends while not restricting future ideas; a new plant palette that allows for year around interest, responds to soil and water issues, and promotes minimal maintenance; and the tying together of previous improvements

Tartesso

Mr. Anderson helped develop the theming and identity for this Buckeye, Arizona community. With the communities vast open spaces, trail systems, and access to the White Tank Mountains, Tartesso is a place developed for families. During the establishment of the identity, Mr. Anderson provided the framework for the park and trail system; provided designs for the entry monumentation(s); and designed many open spaces, trails, and streetscapes.

Summerlin

The scale of this master planned residential community, located in Las Vegas, Nevada, has allowed for varying character and development opportunity. This in turn allows for numerous lifestyle and living opportunities. Project experience includes: The Bears Best Golf Clubhouse, based on the most famous holes from all over the world, created by Jack Nicklaus and brought to the avid golfer in one location; The Ridges Recreation Center, part of an exclusive living community located on the Southern edge of the Summerlin master plan, with amenities including a resort pool, tennis courts, events areas, plazas and patios; and The Willows Recreation Center located in the heart of Summerlin with a secluded pool, large lawn and activities for children. Project responsibilities included landscape architecture for several villages within the community. The project included site planning, water feature design, signage design, streetscape, parks, open spaces, entry monumentations, and golf course landscape



ADDITIONAL RESIDENTIAL PROJECTS

- Shadow Ridge – Chandler, Arizona
- Belmont Master Planning - Maricopa County, Arizona
- Circle Cross Ranch - Maricopa County, Arizona
- Desert Mountain - Scottsdale, Arizona
- Dynamite Mountain Ranch - Phoenix, Arizona
- Aviano at Desert Ridge – Phoenix, AZ
- Sunflower – Marana, AZ
- Mission Peaks – Sahuarita, AZ
- Bighorn – Palm Desert, CA
- Del Webb Dove Mountain – Marana, Arizona

Parks/Municipal Projects

Eastmark Neighborhood Parks

In addition to the work highlighted in Mr. Anderson's Community Design experience with Eastmark, he was also commissioned for designing the neighborhood parks for the first two phases of the community, which includes 25 parks covering over 17 acres. Centered on the concept of community socialization, each park was uniquely designed to be an extension of the front yard and a jewel of neighborhood. Intimate residential neighborhoods are anchored by these small neighborhood parks and connected through the richly designed network of streets. Large expanses of open turf fields encouraging free play for children and social gathering areas for adults, a neighborhood park is conveniently never more than a few minutes away.

Esselmont Park

This 20-acre city park in Henderson, Nevada included restrooms, parking, dog park, tot lot, interactive water feature, baseball fields, pedestrian plaza, tensile shade structures and native restoration areas.

Madeira Canyon Park

This 22-acre community park is the focal point of an existing neighborhood at the edge of the Black Mountains in Henderson, Nevada. Severe grade changes throughout the park required extensive terracing and retaining walls. Our thoughtful designs responded to the needs of the park's users, resulting in contained play areas with tensile shade structures, a garden spot with event lawns, and intimate areas to stroll. The design is primed for play and relaxation, and includes an interactive water feature, soccer fields, baseball diamonds, sport courts, and pedestrian plazas. Tree-lined walkways around the sport courts provide shade for the cheering fans, as well as a buffer to individuals enjoying the quiet corners of the park.

Spectrum Park

This 8-acre park is located within the Spectrum at Val Vista community in Gilbert, Arizona. This park included a restroom, parking, soccer fields, baseball fields, a tot lot, tennis courts, basketball courts, and ramadas.

Paseo's Park

This 12-acre City of Henderson park included restrooms, parking, themed children's climbing area and tot lot, interactive water feature, soccer fields, baseball fields, pedestrian plaza, tensile shade structures and native restoration areas.

City of Chandler Parks Department Projects, six City of Chandler Parks Department projects. This includes San Marcos Park, Pecos Ranch Park, Harris Park, Stonegate Park, Pueblo Alto Park and the Consolidated Canal

Tucson Maingate

This urban space at the entry to the University of Arizona in Tucson, Arizona, includes office, hotel, and commercial development, as well as themed restaurants. Specialty hardscape, site furnishings, and urban landscape unify this project, establishing a core center for working, shopping and dining in the university area.



Gila River Indian Community

Several projects within the Indian community southwest of the Phoenix metropolitan area included a community visioning program, a master plan of two casino site areas, and the design and construction documents for the casinos and adjacent themed streetscapes and plazas.

Additional Parks/Municipal Experience

- ASU Desert Arboretum – Tempe, Arizona
- Desert Botanical Garden – Phoenix, Arizona
- Consolidated Canal – Chandler, Arizona
- Torii Hunter Field at Kraemer Memorial Park – Placentia, California

Trails Design

Trilby Wash Trail and Trail Head

Designed as a portion of the City of Surprise 50-mile Signature Trail, the Trilby Wash Trail involved 404 impact, environmental mitigation, bridge crossings, and hard and soft trail sections. Included in this phase of the trail was a trail head facility with restrooms and storage, parking, equestrian staging, and a shaded refuse area.

Anthem East Trail

Designed as a portion of the City of Henderson Anthem East Trail System, this trail design included signage, hard and soft trails, environmental mitigation, and site furnishings within a native desert environment.

Meadow Valley Range Wilderness Area / Coyote Springs Trail System and Trail Heads

This complex trails system designed for the new Coyote Springs community located north of the Las Vegas valley includes an extensive network of hand-built, natural terrain trails with connectivity to the Meadow Valley Range Wilderness Area. The use of informational signage and way finding along the trails keeps user on the trail corridors, preserving surrounding vegetation and habitats. A series of trail heads were designed to incorporate parking, restrooms, signage, shade structures, and educational display areas while providing for minimal disturbance to the native desert surroundings.

Desert Botanical Garden

Within this notable destination, we worked to provide a new and improved trail system throughout the garden. Trails were designed without impact to historic plantings, along with educational kiosks, wayfinding and educational signage, bridges and lighting design. The trail system accounted for connections to existing and proposed garden improvements while providing a thoughtful and serene experience.

Consolidated Canal Master Plan

This Consolidated Canal includes a regional trail and aquatic system. The trail provides historical and environmental education for the public, while supplying connections to other city and private parks. Trail design, site furnishings, signage, bridge locations, and trail heads were included within this scope of work. Safety of the trail system and interaction with the water was vital to the design of this project. Biofiltration was used to keep contaminants from infecting the water supply.

Pulsipher Wash Trail

The Pulsipher Wash Trail is a native trail as part of a larger City of Mesquite, Nevada trail system. The trail follows the wash with 404 crossings, native plant restoration, signage, shade ramadas, and soft trails. This trail is the first phase of a larger system of native and roadway trails.

Recreation Centers

Anthem Mesquite

This master-planned golf course community located in Mesquite, Nevada, includes conventional neighborhoods and a Sun City active adult Community. The community includes a recreation center with pools, tennis courts, bocce ball, patios, gardens and events space. In addition, a golf clubhouse facility



caters to the outdoors character with grand views and plentiful patios. Project responsibilities include site planning and landscape architecture for the entries, streets, open spaces, parks, clubhouses, and golf courses.

Anthem Country Club

Nestled high in the Black Mountains south of Las Vegas, Anthem Country Club is one of the premiere golf course communities in Nevada with panoramic views and world-class amenities. This award-winning community includes a Keith Foster designed golf course featuring dramatic elevation changes and breathtaking natural desert terrain. Stadium-quality tennis courts, recreation facilities, a clubhouse, and production and custom residential developments round out this exclusive community. Special consideration was given to the theming of this project to create a “club” feel, promoting a recreational atmosphere throughout the community.

Anthem Henderson

The Henderson Phase 3 Recreation Center is a LEED Silver family-oriented activity center with resort-style amenities and a wide variety of programming suitable for every age. Our responsibilities included site planning, grading design, water feature design, signage design, landscape and irrigating design, construction documentation, and construction observation.

Aliante

This master planned residential and active adult golf course community is located just north of Las Vegas, Nevada. Project responsibilities include site planning and landscape architecture for the streets, open spaces, clubhouse, athletic club and golf.

Summerlin

The scale of this master planned residential community, located in Las Vegas, Nevada, has allowed for varying character and development opportunity. This in turn allows for numerous lifestyle and living opportunities. Project experience includes: The Bears Best Golf Clubhouse, based on the most famous holes from all over the world, created by Jack Nicklaus and brought to the avid golfer in one location; The Ridges Recreation Center, part of an exclusive living community located on the Southern edge of the Summerlin master plan, with amenities including a resort pool, tennis courts, events areas, plazas and patios; and The Willows Recreation Center located in the heart of Summerlin with a secluded pool, large lawn and activities for children. Project responsibilities included landscape architecture for several villages within the community. The project included site planning, water feature design, signage design, streetscape, parks, open spaces, entry monumentations, and golf course landscape

DC Ranch Recreation Center

Located in Scottsdale, Arizona, this community recreation center caters to an exclusive lifestyle. The amenities include a swimming pool, creative children’s play area, tennis courts, gardens, and numerous patios and events area. The project included site planning, water feature design, landscape and irrigation design, parks, open spaces, construction documentation and construction observation.

DC Ranch Golf Clubhouse

Designed to facilitate year round activity, this clubhouse has a centralized courtyard engaging all of the interior spaces centrally. The building is oriented to maximize views to the golf course and provide for more than golf activities. Special attention was given to creating intimate spaces that could be arranged to function for larger events. The project, located in Scottsdale, Arizona, included site planning, water feature design, landscape and irrigation design, parks, open spaces, construction documentation and construction observation.

Santaluz Clubhouse

Located in San Diego, California, the Santaluz Club provides members with an extraordinary lifestyle that fosters appreciation for relaxation and luxury. Inspired by authentic California ranch architecture from the 1920s and 1930s, the Santaluz Club sits watch on a hillside overlooking the views of Santaluz. From the dramatic auto-court to the numerous patios and plaza spaces, the Club provides opportunities for private conversation or large events. The project included site planning, water feature design, landscape and irrigation design, parks, open spaces, construction documentation and construction observation.



Additional Recreation Centers & Club Houses

- Solera Recreation Center – Henderson, Nevada
- Stallion Mountain Recreation Center – Las Vegas, Nevada
- Anthem Sun City – Henderson, Nevada
- Big Horn Golf Clubhouse – Palm Desert, California
- Desert Mountain Sonoran Clubhouse – Scottsdale, Arizona
- Dove Mountain Golf Clubhouse – Tucson, Arizona
- Sunflower Recreation Center – Tucson, Arizona
- Sabino Springs Golf Clubhouse – Tucson, Arizona
- Provance Golf Clubhouse – Maricopa, Arizona
- Dove Mountain Recreation Center – Marana, Arizona
- Eastmark Welcome Center – Mesa, Arizona
- Anthem Libery Center – Henderson, Nevada

Streetscape/Roadway Design

Arizona

- Alma School Road / Chandler Blvd. Intersection Improvements – (City of Chandler) Preparation of a plant inventory and salvage plan, coordination of plant material selection with the City Landscape Architect, and preparation of 100% landscape and irrigation plans.
- 64th Street Widening – (City of Scottsdale) Design and implementation of new sound walls, indigenous landscape, and art integration, as well as management of public involvement and coordination with City of Phoenix Parks Department for adjacent Papago Park.
- Desert Mountain – (Scottsdale) Design of various entries, parcels and streetscapes.
- DC Ranch – (Scottsdale) Design of various entries, parcels, streetscapes, recreation center, clubhouse and guidelines.
- Terravita – (Scottsdale) Design of various entries, parcels and streetscapes.
- Bellasera – (Scottsdale) Design of various entries, parcels and streetscapes.
- McDonald & Lincoln Streetscape – (Paradise Valley)

ADOT

- Page Pedestrian Walkway – Landscape design for this ADOT project included streetscape design, ADOT coordination, public participation, and construction document preparation.
- SR-87 (various projects) – Landscape design for several projects along this state highway. Included planting design, construction observation, and environmental mitigation.

Nevada

- City of Mesquite Streetscapes (in and around Sun City Mesquite) – Landscape and irrigation design for public roadways, project coordination, submittals, and construction observation
- Summerlin Streetscapes - Landscape and irrigation design for public roadways, project coordination, submittals, and construction observation
- Anthem Henderson Streetscapes - Landscape and irrigation design for public roadways, project coordination, submittals, and construction observation
- Mountain's Edge Streetscapes - Landscape and irrigation design for public roadways, project coordination, submittals, and construction observation

NDOT

- SR-168 – Landscape Design for Highway Frontage, Coordination and NDOT submittals
- US Highway 93 – Landscape Design for Highway Frontage, Coordination and NDOT submittals
- CC-215 Aliante Parkway Interchange – Beltway encroachment and landscape frontage design
- CC-215 Aviary Way Bridge Overpass – Beltway encroachment and landscape design for beltway transition of new overpass
- SR-160: Buffalo Drive and Durango Intersection - Landscape frontage design



4. Resumes of Key Personnel Proposed for this Contract (Andy Baron)



Education

Bachelor of Science, Industrial Design, UACT, Tempe, Arizona

Registrations

Arizona (45440)
New Mexico (416)
Nevada (709)
Texas (2452)
CLARB (3291)
LEED Accredited Professional



50 n mcclintock drive, suite 1
chandler, arizona 85226
p: 480.699.7956
f: 480.699.7986
andersonbaron.com

Andrew D. Baron, ASLA, LEED AP | Principal AndersonBaron Landscape Architecture, LLC plan • design • achieve

As a founding Principal of AndersonBaron, Andy brings more than 21 years of experience in landscape architecture, urban design and planning to the firm. Andy's steadfast determination to create meaningful, unique spaces that embrace the surrounding culture, character and environment is visible in a wide range of projects, including commercial developments, campuses, park planning, resorts, healthcare, master-planned communities and creative projects. Andy's ability to articulate and convey information and concepts makes him a natural leader. He believes that exceptional design and its integration are products of consistent and effective team collaboration. As a City of Chandler Planning and Zoning Commissioner, Andy maintains an active voice in his local community, continuing his efforts to influence future development for the benefit of its users.

Andy's experience from local grass-root projects to large international developments gives him a unique approach to the detail of every project. Whatever the task, whether it is a sports complex in Basra, Iraq, a resort in the British Virgin Islands, a master-planned community in Las Vegas, Nevada, or a community garden in his hometown, Andy takes pride in ability to discover the true sense of the place.

PROJECT EXPERIENCE:

URBAN DESIGN

Parkside Village (Formerly Entorno)

Parkside Village is a premier Freeway Corridor project with a diversity of product offering and level of design not seen elsewhere in Avondale or the Phoenix Metro Area. Parkside incorporates Transit Oriented Development principles within a New Urban framework. Parkside integrates a Central Park, pedestrian paseos, two transit facilities, active open spaces, and neighborhood parks, creating a healthy lifestyle and a socially dynamic community that embraces alternative modes of transportation with a village setting. Parkside provides numerous pedestrian connections throughout the development and neighboring properties. These pedestrian connections are designed to provide a walkable neighborhood with easy access to public transit options. Parkside residents will be able to live, work, shop and play within a healthy and livable community with appropriate connectivity to neighboring properties.

Barney Farms

This 488-acre mixed use development in Queen Creek, Arizona includes a residential product mix, mixed-use, and commercial elements. A Community Pillar is a pivotal element of this mixed-use development in Queen Creek, Arizona. It expresses the relevance of the place through historical reference, monumental scape, and thoughtful gardens. The strong geometry of the development links the extremities together through timelessly designed green spaces. The multiple axes are focused on key project cornerstones parks or plazas and other regionally relevant features, which add to the significance of the place. At the core of the site lies the recreation center; a heavily programmed destination celebrating the legacy of those who built this community and provided for a lifestyle for the residents that live here today.

Chandler/Gilbert Community College Environmental Technology Center

Partnering with a local architect and Construction Company, AndersonBaron is currently providing planning, design, and construction observation services for the new Environmental Technology Center to be located at Chandler/Gilbert Community College. This facility is currently in its design and planning phase and will be part of an outdoor classroom representing a variety of environmental processes. The facility will detail the latest technology relating to solar and wind energy, water harvesting, and drought-tolerant plant material containing vegetable gardens, flowering groundcover, herbs and demonstration areas. The center will provide a low-impact and cost-efficient living classroom that will serve as a hub for environmental education and resources for CGCC students, local schools, non-profit programs, and community members

Professional Associations

- American Society of Landscape Architects
- City of Chandler Planning & Zoning Commissioner
- Projects for Public Spaces
- Valley Partnership
- Downtown Chandler Community Partnership
- Arizona Trails Association
- Volunteers for Outdoor Arizona
- Urban Land Institute

Coyote Springs Town Center

Comprised of retail, commercial and recreation, this urban space defines community and lifestyle in this new city located just outside of Las Vegas, Nevada. In the core of the initial phase, the site plan integrates a Jack Nicklaus Signature Golf Course with a community recreation center defining northern and southern book-ends of the urban area. The area has been designed to promote community gathering and has numerous opportunities for events, parties or recreation. Detailed hardscape and garden design, as well as themed signage, lighting, and site furnishings define this space. The site plan includes several water features, a themed kids play zone, fishing pond, botanical gardens, meditation spaces, event lawns, pools and spas, a splash pad, and tennis courts.

Gilbert Hospitals

These multiple projects currently under way in Gilbert, Peoria and Florence, Arizona, include a two-phase renovation and addition of a Tower and Ambulatory Surgery Center at the existing facility located in Gilbert, Arizona. This site reflects an emphasis on pedestrian connectivity, healing gardens and plaza spaces. Site master planning for the new 48-acre hospital in Peoria, Arizona, incorporates the 404 wash through the center of the site and major pedestrian trails design and refuge areas. Planning and design of an additional hospital located within Anthem Merrill Ranch in Florence, Arizona, includes themed signage, landscape and site furnishings, with a focus on community place-making and access.

Zanjero Falls Corporate Oasis

This commercial complex in Glendale, Arizona offers an office condominium development catering to professionals seeking a dramatic landscape business environment. A central water garden has densely planted edges and shade opportunities for pedestrians. The exterior landscape areas incorporate Spanish-style fountains with palm trees and canopy trees for shade. The plaza and courtyard spaces connect the garden spaces, creating various opportunities for break time, lunch or simply reading a book or relaxing. The lavish garden areas and water features are viewable from all of the perimeter offices. This 20-acre site is within walking distance to the Cardinals' Football Stadium, the Glendale Arena, and an abundance of retail, shopping and hospitality services.

Mercy Gilbert Medical Center

Recognized as the largest Level 1 acute-care hospital in Gilbert, Arizona, Mercy Gilbert Medical Center is a visible icon for miles from its location near the San Tan Freeway. The site plan for this 60-acre hospital facility was developed in multiple phases. Elegant and statuesque, Mercy Gilbert's entry and contemporary fountains establish the peaceful atmosphere found among its healing gardens and walkways. Responsibilities for this project included planning and entitlement, site planning, schematic design, and construction documentation, as well as construction administration and observation.

Grapevine World Villages

Located in Grapevine, Texas and home to the Hard Rock Theme Park, this high-end mixed use urban center includes restaurants, hotels, offices, shopping, condos and gardens inspired by various cultures throughout the world. Initial design includes site planning of the retail live-work elements within the first phase. In addition, water features have been designed to run in, through and around the retail and condo edges, including a dramatic waterfall into a jurisdictional wash corridor paralleling the site's freeway access. Numerous patios and pedestrian experiences occur on the edge of the water for maximum impact of the amenities. A centralized plaza between the buildings and span bridge unifies the retail experience with the nearby office space.

Florence Hospital at Anthem Merrill Ranch

Located just north of historic Florence, Arizona, this new hospital facility is designed to blend with the characteristics and theming of Anthem Merrill Ranch, a neighboring Del Webb community. A dense surrounding of trees and shrubs shields the facility and parking lots from adjacent planned residential areas and provides shade to seating areas around the main building, giving a private, park-like feeling to its visitors. At the northwest corner of the property, a monument feature greets passersby and provides easy wayfinding to patients and their families.



Honors & Awards

- Blackstone at Vistancia, Hacienda (Peoria, Arizona)
- 2007 Award of Merit Winner
- Best Public/Private Recreational Use Facility
- Vistancia, 2005 (Peoria, Arizona)
- Master Planned Project of the Year
- Best Community Site Plan – 100 Acres or More

Victoria Place

Variety is the spice of life in this newly developing area of Queen Creek, Arizona. Victoria Place combines apartment living with neighborhood offices and a mix of boutique retail and commercial buildings, including a fitness center and urgent care facility. The small town flavor of Victoria Place is reminiscent of days gone by when folks walked to the store, greeting neighbors and friends along the way. The 19-acre apartment complex is bisected by a central pedestrian alley lined with palm trees offering shade and encouraging residents to venture on foot along its route through a centralized, open-space park connecting walkways to the various offices and retail businesses.

La Aldea Graduate Student Housing, University of Arizona

This on-campus student housing program focused on creating an environmentally and socially sustainable village to support the needs and aspirations of the residents. Student rooms are organized around small intimate courtyards linked to the larger main courtyard adjacent to both recreation areas and meeting rooms. Located on Euclid Avenue, along the western edge of campus, and in proximity to a historical residential neighborhood, this project had to be sensitive to its surroundings while still functionally serving the needs of graduate students. The existing alignment of Fifth Avenue immediately adjacent to the building was converted into a park. The park services the residents of the housing as well as the students that attend the University. Additionally, the warm Tucson climate and beautiful Sonoran Desert necessitated thoughtful design, shading and landscaping. The project embodies the southwestern architectural style common in Tucson resulting in shaded courtyards and paseos to dispel the desert heat.

Sundance

Contiguous, centralized open space is definitive of how residents will live, play and experience Sundance Active Adult. Since many active adult communities depend on golf for “green-space,” Sundance required a substantial amenity to be able to show a commitment to recreation. The commitment is delivered in the form of a 30-acre park space. The park encompasses numerous adjoining spaces, each creating a unique experience and programmable destination for residents to experience. Through eclectic styling and creation of intimate useable spaces, residents can spend time simply experiencing the environment. Each space is planned for normal everyday activities as well as programmed group activities. Sundance’s success results from a creation of spaces that connect to other spaces while being independent and not forced within the overall park experience.

Perini Corporate Headquarters

Designed to reflect the professional elements of its business standards, the Perini Building Company Corporate Headquarters located in Las Vegas, Nevada, is a refined blend of sophisticated elegance and classic architecture. From the formal entry flanked by uniform foliage, ornamental pots and a peaceful water feature, to the pristine gardens replete with texture and color, the grounds of the Perini building feel more like a resort than a corporate office. Visitors and staff will enjoy the architectural canopy and chandelier spanning the formal garden area, creating a focal point for the property. Artfully combined, the lush, green vegetation and themed landscape create an attractive sense of place in a professional atmosphere.

Blackstone at Vistancia

This private golf community located within Vistancia, a 7,200-acre master-planned new town located in Peoria, Arizona, includes a mix of high-density housing with lower-density custom lot homes, and a gate house/guest house for sales. In addition, a Jim Engh golf course, integrates golf with a recreation center that includes a Masters swim event pool, a private adult pool, and tennis courts. The hacienda-style character of this community promotes compound-style site planning throughout its passive gardens, event spaces, pools and spas, and kids’ play areas. A central courtyard with a restaurant, outdoor bar and water features enhances the community atmosphere. Responsibilities within the project include all design aspects; master planning, golf routing and golf architect liaison, golf course landscape design, construction administration, community character and theming, lot-specific criteria, design guidelines, water feature design, site planning, streetscapes, parks, open spaces, entry monumentation and signage.



ADDITIONAL URBAN PROJECTS

- Alta Montecito – Las Vegas, Nevada
- Alta Deer Valley – Phoenix, Arizona
- Alta Paradise Valley – Paradise Valley, Arizona
- The Shoppes at Spectrum – Gilbert, Arizona
- Mountainside Fitness Center – Gilbert, Arizona
- Chandler Business Center – Chandler, Arizona
- SanTan Motorplex – Gilbert, Arizona
- Port 35 North – Denton, Texas
- Hyatt Place – Glendale, Arizona
- Alcantara Villas – Phoenix, Arizona
- Buckeye Hospital – Buckeye, Arizona
- Peoria Regional Medical Center – Peoria, Arizona
- Queen Creek Station – Queen Creek, Arizona
- Copper Springs Hospital – Avondale, Arizona
- Zia Hotel – Hobbs, New Mexico
- Alta Chandler – Chandler, Arizona



Planning & Community Design

Inspirada

Comprising over 1,900 acres of contiguous property in southern Henderson, Nevada, Inspirada is a master planned community based on new urban design principles. The community's ample open space and expansive parks network is centrally located to maximize access to the residents and to provide for a different quality of life not found anywhere else in the greater Las Vegas area. Numerous housing types, planned adjacent commercial core and access to regional transportation will allow this community to continue to be a cornerstone of quality living in Henderson. Responsibilities within the project include, land planning, entitlements, landscape architect for community character and theming, site planning, streetscapes, parks, open spaces, entry monumentation, construction administration, design guidelines and signage.

Meridian Crossing

The principle element of this 376-acre community is the integrated park along the entry's grand allee. The themed landscape boulevards have expanded parkways with ample shade canopies through a variety of tree species to provide seasonal appeal; all focused on providing for a direct access to the community parks. The community park is the identify of the community, located front and center with multiple amenities from sports programmed areas to a farmers market. Well-planned and timelessly designed green spaces connect the walking trails to the parks through each neighborhood.

Coyote Springs

Located just outside of Las Vegas, Nevada, this 42,000-acre master planned new city includes a new PGA training facility for the west coast, a Jack Nicklaus signature golf course (with others planned), recreation facilities, urban core and commerce district and resorts. With the first five villages compromising nearly 29,000 potential residents, Coyote Springs will become a large, diverse community, offering a variety of home styles and lifestyles. Responsibilities within the project include master landscape architect for community character and theming, site planning, streetscapes, parks, open spaces, entry monumentation, construction administration, design guidelines, water feature design, and signage.

Barney Farms

This 488-acre mixed use development in Queen Creek, Arizona includes a residential product mix, mixed-use, and commercial elements. A Community Pillar is a pivotal element of this mixed-use development in Queen Creek, Arizona. It expresses the relevance of the place through historical reference, monumental scape, and thoughtful gardens. The strong geometry of the development links the extremities together through timelessly designed green spaces. The multiple axes are focused on key project cornerstones parks or plazas and other regionally relevant features, which add to the significance of the place. At the core of the site lies the recreation center; a heavily programmed destination celebrating the legacy of those who built this community and provided for a lifestyle for the residents that live here today.



Church Farm

Church Farm pays homage to the farming and agriculture lifestyle of which the land was originally inhabited, in a time when residents spent an abundance of time outdoors, involved in their community, and interacting with neighbors. This has shaped the identity of the new community in Queen Creek, Arizona, where the lifestyle resonates throughout Church Farm, designed with a classic mid-century modern flair that encourages genuine interaction between the residents and creates a greater sense of connectedness. Mr. Baron designed a framework through place-making design principles that inspires and fosters residents to be part of their community, connecting with others and enjoying a lifestyle which will provide for a more timeless evolution of the project. Church Farm is designed around an extensive system of 11 neighborhood parks, trails, and open space providing a wide variety of recreational opportunities among the residents. The amenities cater to adults and children alike and are intended to promote organized activities as well as encourage “free play”.

Sunhaven

The charm of a Spanish village can be felt in this 2,100-acre community located in Surprise, Arizona. The landscape palette was designed to reflect old world characteristics, with trails and open spaces that invite its users through a series of natural wash corridors and neighborhood trails. Signage design reinforces the Spanish flavor, while the use of landscape and accent lighting create a nighttime personality for Sunhaven, embracing the pedestrian experience and creating a visually pleasing environment. The organized balance between fundamentally basic design principles and eclectic use of materials allows Sunhaven to emulate a timeless appeal.

The Bridges at Gilbert

Beautiful lakes and neighborhood parks define the simple elegance and lifestyle of The Bridges at Gilbert, located in Gilbert, Arizona, one of Phoenix’s youngest suburbs. Neighborhood parks offering playgrounds, sport courts, and community pools are distributed among the dense housing clusters. Large, interconnected open spaces provide more elaborate amenities and places for community gatherings and events. In addition to a recreation center, this area includes tot lots, sand volleyball courts, basketball courts, ramadas and picnic areas, encouraging outdoor play and activities conducive to a healthy lifestyle. Responsibilities within the project include community character and theming, site planning, streetscapes, parks, open spaces and entry monumentation.

The Spectrum at Val Vista

This 1,200-acre community in Gilbert, Arizona, includes single and multi-family housing, apartments, and an urban core with an open air mall within its commercial district with an auto mall, medical site, and a hospital. Responsibilities within the project included all design aspects; master planning, community character and theming, design and implementation of the streetscapes, sidewalk layout, open spaces, entry monumentation, construction administration, design guidelines, and signage. Also included is an 8-acre park with soccer and baseball fields, tennis courts, a tot lot, restrooms, parking areas, and ramadas.

Vistancia

This 7,200-acre master planned new town located in Peoria, Arizona, offers multiple elements including single and multi-family housing, golf courses, recreation facilities, an urban core and commerce district, and resorts that encourages gathering from its residents. Responsibilities within the project include all design aspects; master planning, golf routing and golf architect liaison, golf course landscape design, construction administration, community character and theming, lot-specific criteria, design guidelines, water feature design, site planning, streetscapes, parks, open spaces, entry monumentation and signage.

Lakin Ranch

This parcel of land located in Avondale, Arizona is the last remaining area zoned for major residential development. Responsibilities included conducting comprehensive amenities and circulation studies to assist the developer in land planning, and determine appropriate phasing and parcelization. Designed to embody the history, organic, and pastoral elements of the area, Lakin Ranch will include flexible open space and programming for adult and family-friendly activities and a relaxed, rural atmosphere.



Mesquite Mountain Ranch

Often referred to as the “Jewel of Surprise”, this community in Surprise, Arizona is about the outdoors. The desert contemporary atmosphere of Mesquite Mountain Ranch embodies the recreational lifestyle of today’s modern family. Located in Surprise, Arizona, this master-planned community boasts an extensive system of parks, trails and open space designed to encourage interaction among its residents. Outdoor activities and amenities abound along a series of trails, bicycle paths and open space corridors. A major, 45-acre central park is a critical component of the community, while smaller mini-parks in each region offer residents a place to meet their own neighbors. Numerous design elements create a high-quality master-planned community where outdoor living is at its best.

Lyons Gate

This 580-acre community located in Gilbert, Arizona, employs the new urbanism style planning with a diverse mix of housing products creating unique neighborhoods. This community includes single and multi-family housing. Responsibilities within the project include community character and theming, streetscapes, parks, open spaces and entry monumentation, as well as coordination of electrical design, structural engineering, and overall landscape construction.

Desert Trails

Strategically set within view of the dramatic White Tank Mountains in Surprise, Arizona and designed with a village core concept, this property is divided into five separate parcels by three major wash corridors, providing a unique design platform for extensive community amenities. Signature trail systems, two regional trailheads, a 35-acre regional park, 214 acres of open spaces, and equestrian access comprise this community creating a cohesive blend of individual neighborhoods, parks, and open spaces. At the core of this development is a major plaza area featuring disc golf, a pool, exercise facility, farmers market, and an amphitheater. Themed neighborhood gardens offer bird watching, climbing, community gardening, and other activities, all designed to provide unique opportunities to connect families and neighbors, set against a backdrop of spectacular mountain views.

La Privada

This is a Spanish-Monterrey themed community located in Goodyear, Arizona. The landscape features formalized tree and shrub plantings with vibrant displays of color and texture, defining a traditional style with aesthetic appeal. Each development parcel is designed around a local park, providing amenities such as ramadas, sand volleyball courts, turf play areas and structural playground facilities. Large open spaces in the community connect it to an expanded multi-use equestrian trail accessible by all city residents, and a meandering path throughout the community serves as a pedestrian and bicycle trail. A darker, desert palette of colors, along with an eclectic mixture of complimentary materials come together harmoniously to create this unique desert community.

ADDITIONAL RESIDENTIAL PROJECTS

- Victoria – Queen Creek, Arizona
- Cooley Station – Gilbert, Arizona
- Shamrock Estates – Gilbert, Arizona
- Hastings Farm – Queen Creek, Arizona
- Dobbins Manor - Phoenix, Arizona
- Charleston Estates Models– Queen Creek, Arizona
- Cantabria – Chandler, Arizona
- Bella Via – Gilbert, Arizona
- La Ventilla – Goodyear, Arizona
- Pecan Trace – Gilbert, Arizona
- Dahlia Point – Mesa, Arizona
- Rhythm – Phoenix/Chandler, Arizona
- Sycamore Farms – Surprise, Arizona
- Rancho Paloma – Phoenix, Arizona
- Ahwatukee Lakes – Phoenix, Arizona
- Andaluza – Scottsdale, Arizona
- Dove Mountain – Marana, Arizona



- Echelon – Chandler, Arizona
- Fire Rock Ranch – Chandler, Arizona
- Higley Heights – Mesa, Arizona
- Lone Mountain – Phoenix, Arizona

Parks/Municipal Projects

Inspirada Municipal Parks

With over 30 acres of neighborhood parks, over 60 acres of community parks and over 30 acres of trails and trailheads, Inspirada provides for a wide range of program with its boundaries. From pools, to multi-use fields to baseball fields and tennis courts, each neighborhood park and community park is built upon servicing different needs within the community and the region. Each park has been designed to provide for varying play experiences rather than simply duplicating activities. This provides for use and program of all the facilities and ensures that variety is provided to the residents of Inspirada and the City of Henderson. Responsibilities include master planning, programming, entitlements, site planning, character and theming, landscape architecture, signage and wayfinding, construction administration and observation.

Coyote Springs Trails System

This extensive planned trails network weaves through preservation land, Bureau of Land Management property, and US Fish & Wildlife preservation areas. With more than 40 miles planned, these trails are expected to be a regional draw. Responsibilities include trails master planning, theming, signage and wayfinding, trail head design, phasing and BLM/USFWS submittals and coordination.

Sundance Park

This a 30-acre park located in Beaumont, California includes a recreation center, pools, spas, tennis and play fields with numerous adjoining spaces, each creating a unique experience and programmable destination for residents to experience. Through eclectic styling and creation of intimate useable spaces, residents can spend time simply experiencing the environment. Each space is planned for normal everyday activities, as well as programmed group activities.

Discovery Trail

Located within the Vistancia community in Surprise, Arizona, utilizes jurisdictional wash corridors through the spine of a community master plan. The trail offers residents contiguous, uninterrupted trails access for over 3.5 miles with culvert crossings avoiding vehicular traffic. Specific programmed elements were integrated into the trails for varying experiences. Program items include a trail head/lookout, wildlife park, cottonwood park, solar garden, desert garden and access to the elementary school and community recreation facilities.

Desert Trails Community Parks

Located in Surprise, Arizona, Desert Trails has over 60-acres of parks. The site includes a 35-acre regional park with restrooms, tennis, multi-use baseball and soccer fields, equestrian center and a Frisbee golf course. In addition, there is also an 18-acre community park with themed activities including a children's play adventure area, pools with a water play structure, tennis courts, basketball courts, free-play areas with bouldering and zip lines, and a dog park. The remaining parks are all themed and connected through a contiguous 14.5-mile trails system through the community and natural wash corridors.

Additional Parks Experience

- Mesquite Mountain Ranch Park – Surprise, Arizona
- Trilogy at Vistancia Parks Trails Master Plan – Peoria, Arizona
- Blackstone at Vistancia Parks Trails Master Plan – Peoria, Arizona
- Bridges at Gilbert Lakes and Parks – Gilbert, Arizona
- Sunhaven Park – Surprise, Arizona
- Coyote Springs Sports Park – Clark County, Nevada
- City of Peoria Park at Vistancia – Peoria, Arizona



Recreation Centers

Coyote Springs Lake House

Located in a 50-acre park in Clark County, Nevada, this site includes an 18-acre reuse water lake with amenities such as paddle boats, fishing, a "Tom Sawyer's" play island and a programmed pier. The site also includes a 32,000 sf. recreation center with basketball gymnasium, exercise lawn, game rooms, lap pool, themed children's water play structure, themed children's water play park, water slides, 18,000 sf. lagoon pool, and a boat dock. Numerous other amenities surround the lake itself including trails, pocket parks, basketball, children's play structures, and fishing piers.

Sundance Recreation Center & Park

This 30-acre park located in Beaumont, California includes a recreation center, pools, spas, tennis and play fields with numerous adjoining spaces, each creating a unique experience and programmable destination for residents to experience. Through eclectic styling and creation of intimate useable spaces, residents can spend time simply experiencing the environment. Each space is planned for normal everyday activities, as well as programmed group activities.

Mountain Vista Club

This 20-acre park site is located within the Vistancia master-planned community. The site has a recreation center, community meeting rooms, basketball gymnasium, three community pools with two waterslides, interactive splash pad, tennis courts including stadium tennis, event lawn and a significant shaded children's playground

The Hacienda at Blackstone

This private golf community is located within Vistancia, a 7,200-acre master-planned new town located in Peoria, Arizona, includes a mix of high-density housing with lower-density custom lot homes, and a gate house/guest house for sales. In addition, a Jim Engh golf course, integrates golf with a recreation center that includes a Masters swim event pool, a private adult pool, and tennis courts. The hacienda-style character of this community promotes compound-style site planning throughout its passive gardens, event spaces, pools and spas, and kids' play areas. A central courtyard with a restaurant, outdoor bar and water features enhances the community atmosphere. Responsibilities within the project include all design aspects; master planning, golf routing and golf architect liaison, golf course landscape design, construction administration, community character and theming, lot-specific criteria, design guidelines, water feature design, site planning, streetscapes, parks, open spaces, entry monumentation and signage.

The Reserve

A 550-acre exclusive golf course community located in Palm Desert, California, features a Jay Moorish course, a Tuscan-style clubhouse, swim and tennis center, and a sales and marketing facility.

Quintero Golf & Country Club

An 827-acre exclusive country club and resort in Peoria, Arizona, has both Rees Jones and Greg Norman championship golf courses. Responsibilities at Quintero include all design aspects; master planning, Golf Clubhouse, Recreation Center, golf routing and golf architect liaison, golf course landscape design, construction administration, community character, lot specific criteria, design guidelines, water feature design and signage.

Additional Recreation Centers & Club Houses

- Golf Club at Trilogy Vistancia – Peoria, Arizona
- Trilogy Recreation Center at Vistancia – Peoria, Arizona
- Golf Clubhouse 'The Chase' – Coyote Springs, Nevada
- YMCA Mesquite Mountain Ranch – Surprise, Arizona
- Golf Club at Trilogy Vistancia – Peoria, Arizona
- Trilogy Recreation Center at Vistancia – Peoria, Arizona
- Blackstone at Vistancia – Peoria, Arizona
- PGA Village Clubhouse – Coyote Springs, Nevada



Streetscape/Roadway Design

Arizona

- Vistancia – (Peoria) This substantial project included conceptual design through construction management for the various amenities, streets, and trails of Vistancia including:
 - Vistancia Boulevard – Design and management of the entry and streetscape of Vistancia Boulevard, including the landscape design, grading design, lighting design, scheduling, construction detailing, production drawing direction, project management, and construction management.
 - Dynamite Road (Ridgeline Road) – Design and implementation of the streetscape grading, sidewalk layout, and landscape design, including working drawings, production and construction scheduling, and construction administration.
 - Lone Mountain – Streetscape grading design, sidewalk layout, and landscape design, as well as implementation of working drawings, production and construction scheduling, and construction administration.
 - Trilogy Boulevard – Design of grading, layout, planting, and detailing, as well as coordination of electrical design, structural engineering, and overall landscape construction.
- Spectrum at Val Vista – (Gilbert) Design and implementation of the streetscape grading, sidewalk layout, and landscape design, including working drawings, production and construction scheduling, and construction administration.
- Lyons Gate – (Gilbert) Design of grading, layout, planting, and detailing, as well as coordination of electrical design, structural engineering, and overall landscape construction.
- Mesquite Mountain Ranch – (Surprise) Design of grading, layout, planting, and detailing, as well as coordination of electrical design and structural engineering.
- Desert Trails – (Surprise) Design of grading, layout, planting, and detailing, as well as coordination of electrical design, structural engineering, and overall landscape construction.

Nevada

- Coyote Springs – (outside Las Vegas) Design and management of the streetscapes for a 42,000 acre master-planned community, including the landscape design, grading design, lighting design, scheduling, construction detailing, production drawing direction, project management, and construction management.
- Anthem Henderson Streetscapes – (Henderson) Landscape and irrigation design for public roadways, project coordination, submittals, and construction observation.
- SR 168 Improvements – (Coyote Springs) Design of a mile-long portion of State Route 168 including widening and improvements to accommodate traffic from the new master-planned community. Responsibilities included coordination with developer and NDOT, existing and proposed utilities, encroachment issues, re-establishment of native vegetation, erosion control and drainage.



4. Resumes of Key Personnel Proposed for this Contract Tom Durant



Education

Associates Architecture Degree,
Onondaga Community College,
New York

Master Graduate, Rapport
Leadership International

BA of Science in Green
& Sustainable Enterprise
Management, University of
Phoenix

Registrations

L.A.I.T. (AZ #08607)
Arizona (54205)
LEED Accredited Professional

Tomas Durant, LEED AP | Associate

AndersonBaron Landscape Architecture, LLC
plan • design • achieve

Tom's experience in the landscape architecture industry spans more than 21 years and covers a broad range of responsibilities including project development, business development, project design, coordination and management. A LEED Accredited Professional, Tom has the unique ability to process complex ideas into workable solutions, providing an important component to AndersonBaron's Quality Assurance Program. He has a keen understanding of natural processes and the ability to respond to challenges in innovative and creative ways. Tom's analytical approach to his work broadens the collaborative perspective of our team.

With AndersonBaron for over three years, Tom has dedicated his practice to discovering sustainable solutions to any project he encounters. Whether it is a master-planned community, an urban redevelopment, a housing subdivision, or an industrial complex, he creates sustainable solutions to any challenge.

PROJECT EXPERIENCE:

City of Avondale Street Tree Master Plan

Tom is serving as project manager for this project that was awarded in January of 2014. He provided a street tree methodology, background, rationale and design intent for a primary and secondary street tree species (which included tree size, shape characteristics, shade properties, water requirements, and maintenance requirements) proposed for the arterial and collector streets within six identified character areas throughout the City of Avondale. This also involved identifying the proposed primary and secondary tree palettes or arrangement of numerous species for the character areas identified.

The Bridges at Gilbert Trails and Master Open Space

The Bridges at Gilbert Master Open Space Plan exhibits an extensive landscape and hardscape plan and amenity package appropriate for all age groups. Eight neighborhood parks and two community parks are designed with complimentary and diverse amenities and connected through the trails systems, with the hardscape package emphasizing the theme of the project, and a plant palette rich in color and diversity to compliment the overall look and feel of the community. Multiple recreational opportunities are provided within the extensive lakes, streams, neighborhood parks, and trail system of over 114 acres (roughly 19%). The open space package offers complete connectivity within the community as well as connections to additional trails and bird watching opportunities at the adjacent Town of Gilbert South Recharge Park, and both Queen Creek and Sonoqui Washes. Every amenity provided in the parks allows for interpretive activity and is intended to enhance the overall character of the community.

Glennwilde Groves

This 620-acre master planned community located in the City of Maricopa. Tom was responsible for the coordination of design for the landscape character, entry monuments, 24-acres of community open space, effluent lake irrigation system, 3 miles of streetscape, 2 community parks, and the first 18.8-acre City of Maricopa Park. Additional services included coordination with architectural building elements, irrigation master planning, lake design, specifications and cost estimates.

Adora Trails

A quaint, 580-acre infill community located in Gilbert, Arizona, Adora Trails was planned with an urban residential core, enticing for surrounding neighborhoods with an amenity package that encourages people to gather. Amenities include an aquatic center, fishing lakes, miles of walking trails, and 6 parks spread



50 n mcclintock drive, suite 1
chandler, arizona 85226
p: 480.699.7956
f: 480.699.7986
andersonbaron.com

throughout, with open spaces all connected by green paseos encouraging community connectivity.

Layton Lakes

This project is an 800-acre community located in Gilbert and Chandler, Arizona where Tom had the role of project manager; Tom acted as the liaison between the City of Chandler, Town of Gilbert, and Maricopa County to develop the community theme, landscape and irrigation guidelines, as well as all of the amenities. Services included the design of all recreational amenities, including an 8-acre community town center located in Chandler, over 20-acres of community lakes, streams and a multi-use trail system to enable all points within the community access to neighborhood amenities and the town center. The landscape and effluent irrigation system are designed to provide optimum water management capabilities for the site.

Sonoran Foothills

As Project Manager, Tom was responsible for the design, as well as maintaining the "Vision" for the 1200-acre site in Phoenix, Arizona from schematics through construction documents, permitting, and construction observation. Major elements of the community included native plant salvage and inventory plans, conceptual design, design guidelines, landscape and hardscape for two community parks, wash revegetation, a trails master plan, and over 3 miles of streetscape.

East Valley YMCA

This 35,000 sf. YMCA in Mesa, Arizona was designed to provide additional health, wellness and connectivity for the A.T. Still University campus. Tom was responsible for the coordination between the architect and engineer for the initial design, specifications, and final construction documents. The site included a large play and lap pool, pedestrian connectivity to the existing campus, future campus connectivity planning, and primary entry experience.

Trilogy at Power Ranch

Tom's project responsibilities for this active adult community in Gilbert, Arizona included conceptual and final landscape, irrigation and amenity designs for 9 parcels within phase 2 of Trilogy adjacent to the existing golf course and the Sonoqui wash. Additional services included coordination with existing community amenities, and golf course remediation along new parcels, and construction observation.

Coronado Ranch

Located on the northeast intersection Higley and Queen Creek Road in Gilbert, Arizona, is this 9-parcel community offering over 32-acres of open space amenities such as basketball, volleyball courts, walking trails, shade ramadas, play structures and open sports fields. Responsibilities within the project included conceptual design documents, construction documents, and construction observation.

Power Ranch

Designed to embrace the small town feel of Gilbert, Arizona, Power Ranch is a 1,600-acre master planned community with over 25 central neighborhood parks, lush landscaping, 2 community recreation centers, 25-meter lap pool, freeform splash play pool, splash pad, fishing lakes and 26 miles of interconnected walking trails. Project responsibilities included initial conceptual designs, pre-plat and DRB Town submittals, character themeing, design guidelines, streetscape, parks, entry monumentation, construction documents and construction observations.

Additional Experience

- Johnson Ranch – Queen Creek, Arizona
- Power Marketplace – Gilbert, Arizona
- Business Park at Power Marketplace – Queen Creek, Arizona
- East Valley YMCA – Mesa, Arizona
- Sossaman Estates – Queen Creek, Arizona
- Palorosa – Florence, Arizona



- Tierra Del Rio – Peoria, Arizona
- Sonoran Foothills – Phoenix, Arizona
- Luhrs Towers – Phoenix, Arizona

Professional Associations

- American Society of Landscape Architects
- United States Green Building Council



50 n mcclintock drive, suite 1
chandler, arizona 85226
p: 480.699.7956
f: 480.699.7986

plan.design.achieve



andersonbaron
arizona|nevada|texas



we innovate with purpose

AndersonBaron was launched in 2005 by Brett Anderson and Andrew Baron with the philosophy to form a Planning & Landscape Architecture firm on the belief that aesthetics and function can be fused together while maintaining a true respect for the environment. We create sustainable places to live, learn, play and work, with a portfolio of projects illustrating our passion for creating distinctive and inspiring environments.

We are caretakers of the relationship between the land and the built environment; our job is to improve the way our world looks. One project at a time, this is our charge. We attain this goal through integrity of our work, devotion to our craft, and a talented effort of our diverse team.

culture

Communication is the cornerstone of success! Providing full service solutions for our clients' needs requires more than just knowledge. This ideal, combined with our commitment to excellence and mission to deliver outstanding client service, has earned AndersonBaron the reputation it exemplifies today. Ideas come from every person and every place; AndersonBaron is led by efficient and experienced project management that fosters a culture of creativity and stimulates and encourages inventiveness. If the ego of one individual holds too tight, new innovations can be overlooked or lost.



arizona
50 n mcclintock dr, suite 1
chandler, az 85226
480.699.7956

nevada
5740 arville st, suite 216
las vegas, nv 89118
702.280.4979

texas
408 w 8th st, suite 201
dallas, tx 75208
469.916.6750

andersonbaron.com

a collaborative work environment leads to
successful results for all



design team



Brett Anderson, asla | principal

Brett provides a unique artistic vision to everything he creates by fully understanding each place and allowing the process to naturally unfold. Brett's conviction is that process, combined with innovation, experience, and an understanding of the beauty and art of the land are paramount to its ultimate success. Over the course of his career, Brett has been a leader in the promotion of native plant material, sustainable design, and placemaking. Brett's process embraces a great respect for the importance of meeting societal needs and belief that history, technology, societal values, and sustainability should drive design solutions.



Andy Baron, asla, LEED AP | principal

Andy's ability to articulate and convey information and concepts makes him a natural leader. He believes that exceptional design and its integration are products of consistent and effective team collaboration. Andy's steadfast determination to create meaningful, unique spaces that embrace the surrounding culture, character and environment. This is evident in a wide range of projects, including commercial developments, campuses, park planning, resorts, healthcare, master-planned communities and creative projects.



Tom Durant, rla, LEED AP | associate

Tom's experience in the landscape architecture industry spans more than 21 years and covers a broad range of project design and management. Tom has the unique ability to process complex ideas into workable solutions, providing an important component to AndersonBaron's Quality Assurance Program. His analytical approach and keen understanding of natural processes give him the ability to respond to challenges in innovative and creative ways.



Chris Jones, asla | sr. project manager

Chris is a leader in landscape architecture and community planning with a great understanding of the importance of historic culture on a community, its landscape, and the importance context plays in all design. Throughout his career he has managed and directed several design teams with an expertise in architectural design guidelines, entitlements, development standards, community place making and theme development, mixed-use development, urban design, and regional planning.



Brian Rogers, rla | sr. project manager

Brian's analytical approach to design and solution is accredited to his 15 years in the field of landscape architecture. Brian's strength lies in his ability to analyze project feasibility and constraints, concluding in successful projects. He is well versed in a broad range of projects, including large-scale master-planned communities, commercial, hospitality, institutional and upscale residential. Brian is committed to professional growth, as well as excellence in design development and implementation.





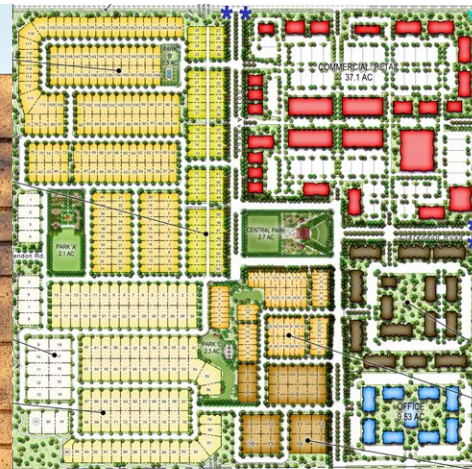
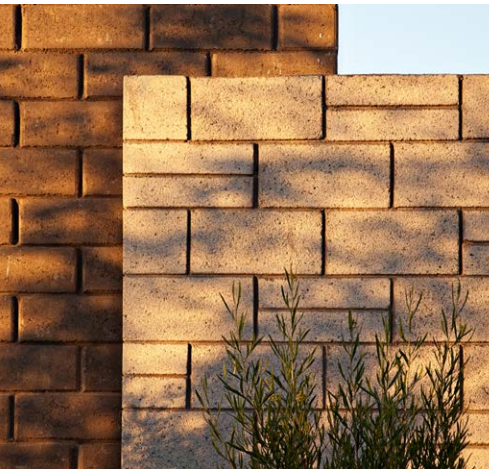
design alone does not create a great place

process

At AndersonBaron, we focus on the *process* when implementing each successful project as well as the end result. Design alone cannot create a great space; it must also be a product of consistent and meaningful interaction between the client and the project team working together to fully satisfy the needs, desires and wishes of the users. This is accomplished by addressing immediate concerns while being cognizant of the future and potential needs.

A calculated and deliberate process such as ours combines our tools and knowledge to yield real-world results.

Our work is focused and precise; we hone our skills by developing our craft daily. While versed in many design principles and practices, we prefer a concise definition of what constitutes AndersonBaron's "services". For this reason, AndersonBaron developed individual Design Studios to focus on the true needs of each project. Our studios are the framework for responding to each unique project and client, while remaining steadfast on our strategies and principles.

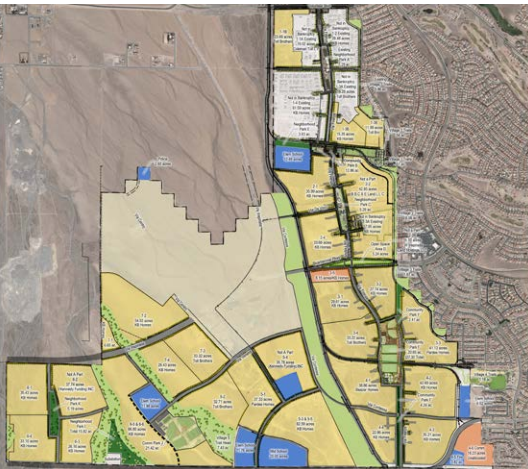




design studios

AndersonBaron's approach extends throughout each studio: to rely on the relationship we establish with our client and a comprehensive understanding of their projects, goals, and needs. A project is never truly successful without the client and the project teams' satisfaction in both the design experience AND the end result.

These studios are based on the idea that 1) each project is unique, 2) spaces should focus on the specific user without limiting its uses, and 3) placemaking is central in creating an accepted project.



AndersonBaron Design Studios:

- Community Design Studio
- Urban Design Studio
- Parks Studio
- Environmental Design Studio
- Public Works Studio
- Garden Design Studio

The landscapes we create at AndersonBaron represent the amalgam of our ideals, wisdom and needs. We create places where lives are lived and memories are made, and ultimately are the fabric connecting places to communities. We design productive landscapes: places of peace and equanimity, places of learning and beauty, places to treasure the company of others, and landscapes that respect the authentic beauty and wildness of nature.

The AndersonBaron philosophy crosses the boundaries of our services to focus on the end-product versus individual pieces. This philosophy is incorporated into every aspect of our firm and from it emanated the **True Places Manifesto**; a collaborative, pragmatic, and ego-free approach to designing enriching spaces.



the true places manifesto

People long for true places; places with a natural familiarity incorporated into the environment. People want to visit places without the forced sense of implied comfort, but instead feeling at ease in their surroundings without the realization that another emotion was an option; as if remembering a place which they've yet to actually visit. True Places is about creating comfortable, welcoming places that are, above all, true to themselves.

True Places embrace real world constraints and the inevitable changes the world will bring. Sustainability is a fundamental part of the design process for a True Place – it is neither an option nor an ideal.

Change is inevitable; a True Place is designed to anticipate and welcome impending changes by providing features to easily and naturally accommodate the tests of time. With new technologies continuing to widen the possibilities, sustainability is a must in any design concept.

The challenge in designing a True Place is to preserve as much feeling and functionality as possible while embracing elements of the real world out of the designer's control. Unlimited funds and timelines do not constitute a True Place. Constraints may arise, but they are often what lead to the most innovative creative solutions.

A true place is unique, natural, and born of a collaborative process. They involve a collective effort between the client as much as the designer. While designers contribute creativity, insight, and expertise to the process, a truly successful outcome materializes from an ongoing collaborative, methodical process between the designer and clients; where parties have an openness and willingness to relinquish cherished notions when appropriate. This is the optimum process that benefits the most important party: those using, living, and working in the place.