

WORKFLOWS FOR CONDITION INSPECTION DOCUMENTATION OF ARCHITECTURAL HERITAGE BASED ON HBIM: TAKING THREE DUTY ROOMS IN FORBIDDEN CITY OF BEIJING AS AN EXAMPLE

S. Han^a, C. Wu^{a,*}, D. Li^a, J. Li^a, Y. Liu^b, K. Feng^b, Y. DI^c

^a School of Architecture, Tianjin University, 92 Weijin Rd, Tianjin 300072, China 601214045@qq.com, wucong@tju.edu.cn, 790806480@qq.com, 908127045@qq.com

^b Tianjin University Research Institute of Architectural Design, 192 Anshan West Rd, Tianjin 300073, China (734758540, 364798439)@qq.com

^c The Palace Museum, 4 Jingshan Qianjie, Beijing 100009, China, zycdyj@163.com

Commission II

KEY WORDS: HBIM, Condition Inspection, Dual-route Workflows, Information Management, Interactive Model, Defects Keynote Dictionary

ABSTRACT: This paper explores the BIM-based route map and workflows for documentation of condition inspection for architectural heritage, exemplified by an on-going conservation project of three Duty Rooms in Yangxin Hall complex in the Forbidden City, Beijing. Since intensive, multi-disciplinary inspection work for architectural heritage will result in huge amount and categories of data and information, the 2D-based traditional way of documentation is abandoned, while HBIM was introduced for information management and presentation. In respond to multi-disciplinary collaboration, a dual-route workflow is specially developed for the combination of BIM and non-BIM teams, in which the BIM team is responsible for BIM models' creation and maintenance, and for information management and presentation, while the non-BIM team carry out the survey and inspection in their own established way without any requirements for BIM skills, making a little adjustment where necessary, with interactive models as links between them. The practice following the workflows mentioned in this paper proves that condition inspection based on HBIM is applicable, compatible and flexible, providing the possibility to improve the traceability and sustainability of heritage information, and to generate visualized, thematic and integrated presentation in high efficiency and consistency. This paper also provides some solutions to the specific problems encountered during actual operation. For example, the defects keynote dictionary offers a sound tie between the BIM team and non-BIM team, and between site survey and final presentation; the application of shadow elements helps to improve the information management between whole and parts, ideal and actual, 2D and 3D.

1. INTRODUCTION

1.1 Background

The building complex of Yangxin Hall (Hall of Mental Cultivation) used to a very importance residence for the emperors from the 18th to early 20th century within the Forbidden City, Beijing (Figure 1) (Fu 1983; He 2016). Since 2015, a conservation and restoration project has been carried out for this building group. It attaches much importance to the critical process, and multi-disciplinary, in-depth survey, inspection, analysis, research, assessment and documentation are highly required (Shan 2016). As a phrasal result of the on-going project, this paper will focus on the documentation or information management during the building condition inspection process for the three Duty Rooms which could date back to 1750 and were used as the service centre for the emperors' daily life in the front courtyard of the residence complex (Figure 2). As an integral part of the complex, they are unique and valuable for their roles of spatial transition and construction flexibility, in spite of their relatively modest appearances.

Since intensive, multi-disciplinary inspection work will result in huge amount and categories of data and information, the 2D-based traditional way of documentation is partly abandoned, while HBIM was introduced for information management and presentation expecting to improve data visualization, traceability and sustainability. In this project, the BIM software Autodesk Revit 2016 and A360 are adopted.

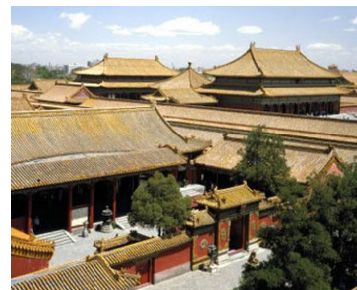


Figure 1 Bird-eye view of Yangxin Hall complex

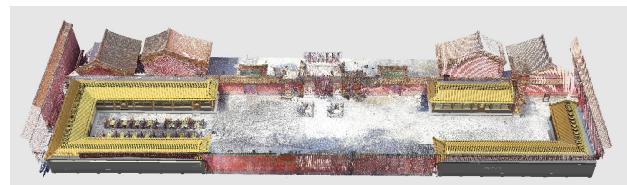


Figure 2 Bird-eye view of the three Duty Rooms (in front, with yellow roofs), mixture of BIM models and point cloud. On the left, upper right and lower right are West, Northeast and Southeast Duty Rooms respectively

* Corresponding author

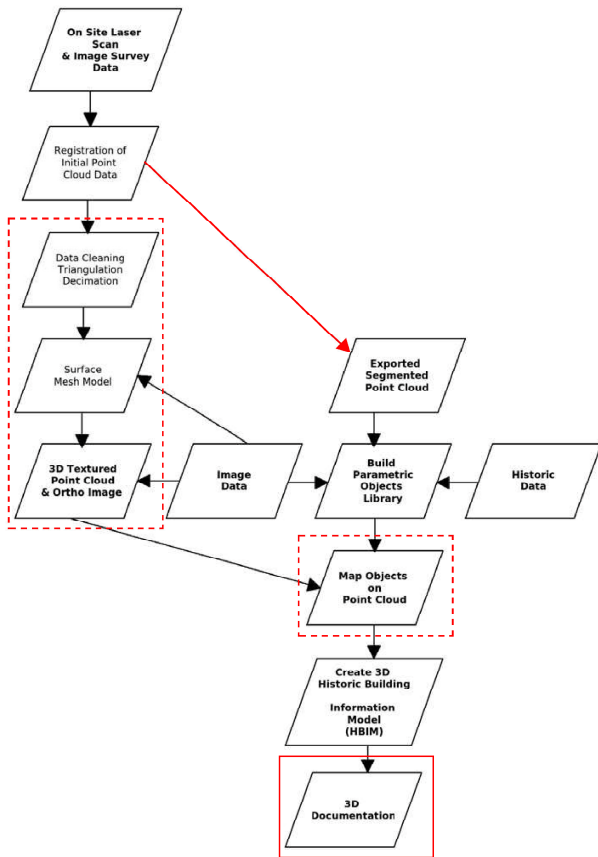


Figure 3 HBIM Workflow by Murphy (2009), marked in red by the authors: the red line with an arrow is a shortcut route, the nodes in dashed rectangles are not necessary, and the final node is supposed to be extended.

In the field of heritage documentation, use of Building information modelling (BIM) is becoming a trend (Logothetis 2015). Murphy (2009) put forward the concept of HBIM and found a way out for point cloud which is difficult to reuse. However, it can be argued that the workflows by Murphy is not applicable. 1) Point cloud is not a necessity for HBIM, but merely one of data resources; 2) When constructing a HBIM model, triangular mesh modelling and texture mapping is not so meaningful; 3) Elements of HBIM should be mapped on the realistic world rather than on the point cloud (Figure 3). In short, HBIM could actually be used just as an index frame of heritage information.

1.2 Story just Beginning

In this project, prior to condition inspection or building survey, metric survey including survey control, 3D laser scanning, and hand measurement had been finished and BIM models and measured drawings were prepared. For non-BIM modelling applications, a prepared model means the story is close to an end, but in BIM processing, on the contrary, the story is just beginning. This may be the big difference between BIM and non-BIM modelling. The workflows discussed in this paper actually focus on the process of recording and presenting inspection information based on initially prepared BIM models.

2. DUEL-ROUTE WORKFLOWS FOR BIM-BASED CONDITION INSPECTION DOCUMENTATION

2.1 Collaboration between BIM and Non-BIM Teams

In respond to multi-disciplinary collaboration, a duel-route workflow is specially developed for the combination of BIM and non-BIM teams, in which the BIM team is responsible for BIM models' creation and maintenance, and for information management and presentation, while the non-BIM team carry out the survey and inspection in their own established way without any requirements for BIM skills, making a little adjustment where necessary to adapt for BIM workflow, with interactive models as links between them (Figure 4).

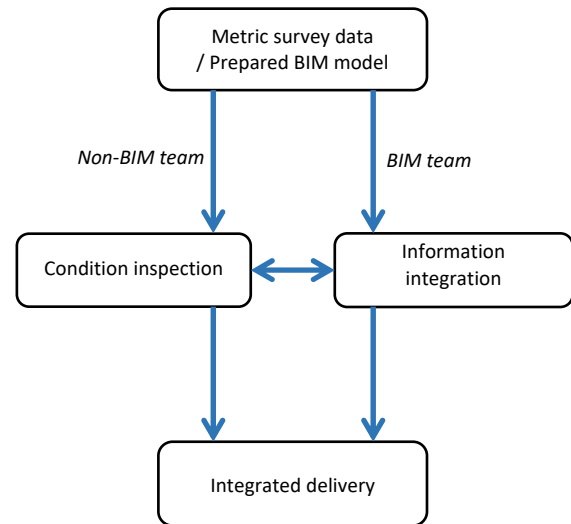


Figure 4 Dual-route workflows

2.2 BIM Team Workflows

In general, the workflows for BIM-based inspection documentation can be roughly divided into three phases: modelling, project phasing, information integration and presentation (Figure 5).

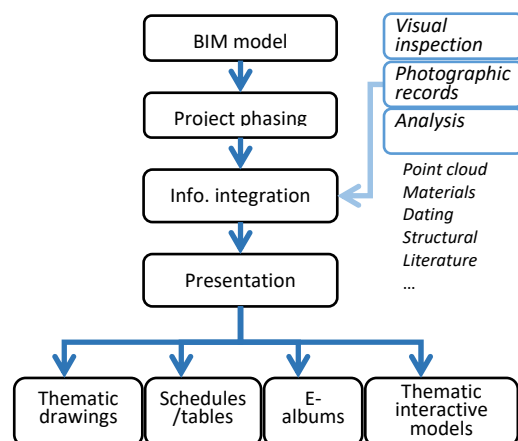


Figure 5 Workflows for BIM team

2.2.1 Modelling: There are too many steps and details about model creation. Since the workflows in question begin with a prepared model, only some important ideas are mentioned here. 1) The model creation is a critical process which requires an informed BIM team who should understand the building surveyed well, and participation in the metric survey is

preferred. 2) Obviously, in preparing the models, adjustments should be made according to the inspection team's requirement of LOD. In this project, for example, roof tiles are divided into three groups: eaves tiles, ridge tiles and normal tiles to go well with the way of inspection (Figure 6). Similarly, the floor was created as a whole, but divided into many smaller "components", or flooring tiles, to record the information piece by piece. 3) During model preparation, interactive models via A360 was used as the media for proofreading by all participants, from both BIM and non-BIM teams (Figure 7).

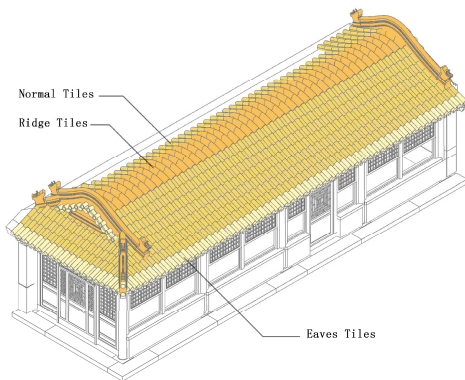


Figure 6 Roofing tiles

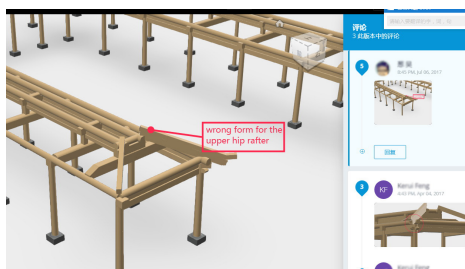


Figure 7 Model proofreading via Autodesk A360

2.2.2 Defining Project Phases: right information should be recorded in right phases. To document the building conditions, a "condition inspection" phase (2016—2017) is established, and prior to it, based on historical archives, there are four phases defined: Qianlong period, prototype, 1950s, and 1980s.

2.2.3 Information Integration: all information or data can be roughly divided into three types: from visual inspection, from photographic records, and from other inspection and analysis, such as deformation analysis from point cloud, material, structural, dating assessment and interpretation of historical literature.

For visual inspection, there are three way of data input: 1) direct input in Revit elements, 2) input in Revit schedules (tables), and 3) input and edit in excel files via data export and import. The last one relies on Revit subscriptions such as Revit DB-link and BIM One Export and Import Excel. It is of importance not only because it is a convenient way of batch processing which is quite difficult within Revit, but also it builds a bridge between BIM and non-BIM teams, for using Microsoft excel files or similar editor is close to the latter's routine practice. It is expected to realize the data processing via interactive models in the future work.

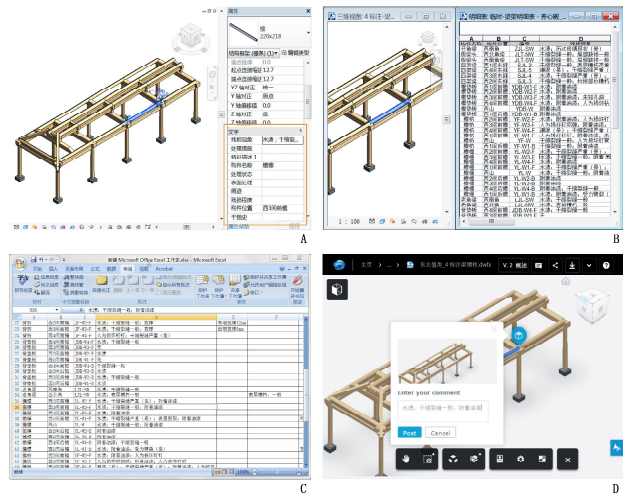


Figure 8 Ways of data input and edit

A) Direct input in Revit; B) input in Revit sheets; C) input and batch processing in Excel with reference to D) an interactive model

For image resources and other quantitative analysis results, the parameters of URL type are used to creation hyperlinks to locate the albums or the original forms of reports.

2.2.4 Presentation and Deliveries: as one of most important characteristics and merits, BIM can provide visualized thematic presentation to make the building and defect information presented in a visualized and logic way.

In this project, views are organized by themes of two levels: firstly, the five building units including platform (foundation if available), timber frames, roof, wall and non-structural woodwork (mainly windows and doors); secondly, the types of defects, for example, rot in wood components, glaze loss of roof tiles, or weathered platform stones.

Subsequently, four types of BIM-based presentation are given: 1) thematic drawings or sheets in Revit, 2) thematic interactive 3D models presented in A360 (Figure 13), 3) schedules, and 4) online or offline e-albums (Figure 14, Figure 15).

Base on a given theme, a typical thematic drawing is actually a combination of 2D or 3D drawing, a schedule, photographs selected from the e-albums (Figure 9) or images generated from other analysis software (Figure 11, Figure 12). In a thematic drawing, theme related elements are in different colours which representing certain defects and the degree of damage, while other components are in grey or white as the background.

Consequently, it is feasible for HBIM to provide an integrated deliveries combined with drawings, photographs, tables, interactive models. The improvement is worth of expecting.

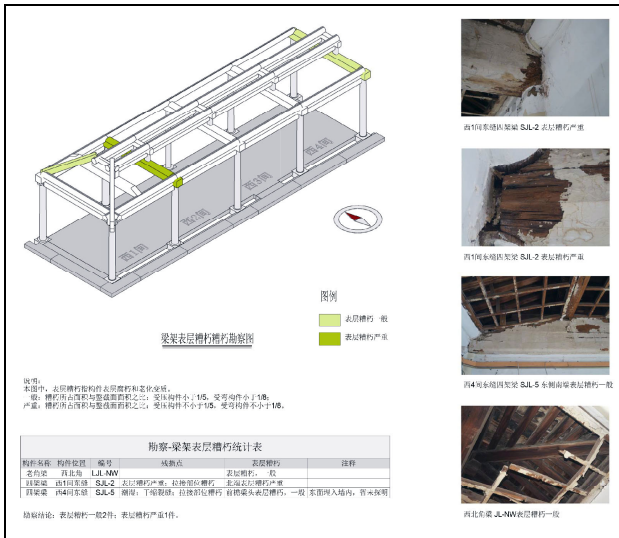


Figure 9 Example of thematic drawings; theme: surface rot of structural wood components

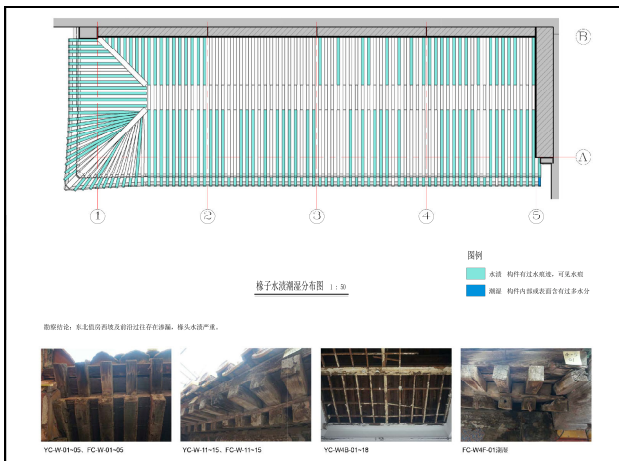


Figure 10 Example of thematic drawings; theme: traces of leakage

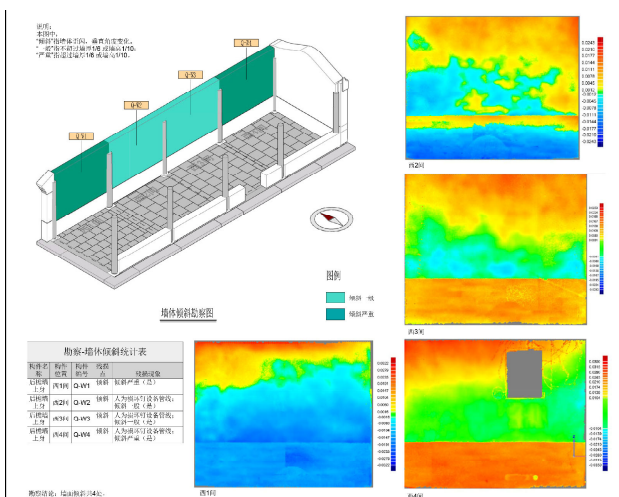


Figure 11 Example of thematic drawings; theme: analysis on the wall surface based on point cloud

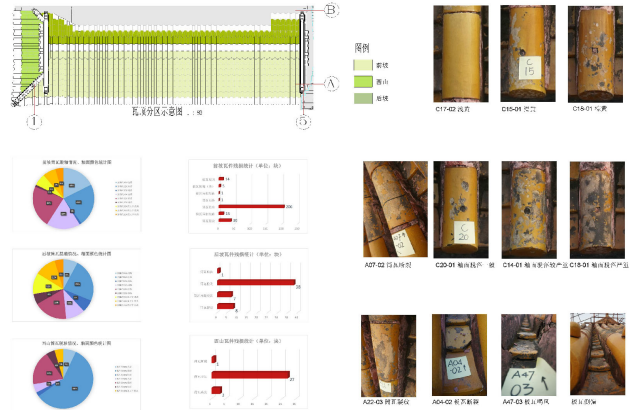


Figure 12 Examples of thematic drawings, theme: regular roofing tiles

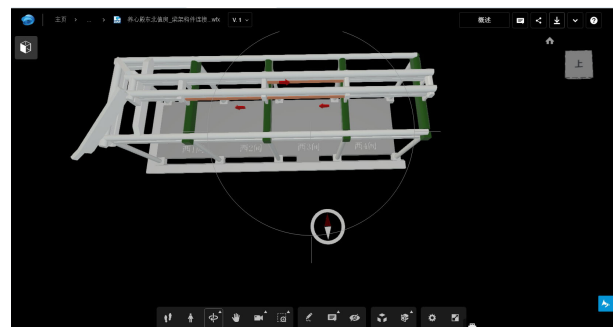


Figure 13 Example of thematic 3D view in A360; theme: problems of structural components joints



Figure 14 Online e-albums linked with the BIM model

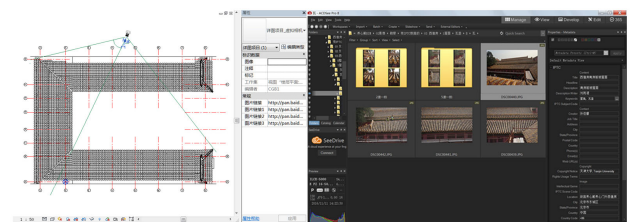


Figure 15 Local e-albums linked with the BIM model

2.3 Workflow Adjustment for Inspection Teams

In general, non-BIM inspection teams will just follow their own established workflows, changes only occur in the way of taking on-site survey notes, especially for visual inspection.

Changes in the way of data recording include on-site and off-site aspects:

1) **On-site:** mark or review on the prepared interactive models in mobile terminal devices (Autodesk A360 is used in the project) (Figure 16); or fill in the hardcopies of blank data

tables (sheets in Revit) as field record books (survey notes) on occasions when electric devices are unavailable or inconvenient due to poor internet service or bad working conditions (Figure 17).

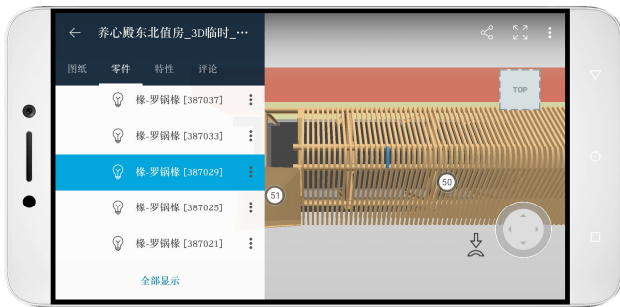


Figure 16 Accessing the interactive models and review it in a mobile phone

构件名称	编号	痕迹	水渍	潮湿	榫头糟朽	开裂	局部缺损	附着	历次修缮	人为损坏	补充
飞椽	PC-W2F-01		✓				✓			✓	✓
飞椽	PC-W2F-18		✓								
飞椽	PC-W2F-17		✓								
飞椽	PC-W2F-16		✓								
飞椽	PC-W2F-15		✓								
飞椽	PC-W2F-14	22, 23, 24, 25, 26, 27, 28, 29, 30, 31, 32, 33, 34, 35, 36, 37, 38, 39, 40, 41, 42, 43, 44, 45, 46, 47, 48, 49, 50, 51, 52, 53, 54, 55, 56, 57, 58, 59, 60, 61, 62, 63, 64, 65, 66, 67, 68, 69, 70, 71, 72, 73, 74, 75, 76, 77, 78, 79, 80, 81, 82, 83, 84, 85, 86, 87, 88, 89, 90, 91, 92, 93, 94, 95, 96, 97, 98, 99, 100		✓							
飞椽	PC-W2F-13		✓								
飞椽	PC-W2F-12		✓								
飞椽	PC-W2F-11		✓								
飞椽	PC-W2F-10		✓								
飞椽	PC-W2F-09		✓								
飞椽	PC-W2F-08		✓					✓			
飞椽	PC-W2F-07		✓								
飞椽	PC-W2F-06		✓								
飞椽	PC-W2F-05	22, 23, 24, 25, 26, 27, 28, 29, 30, 31, 32, 33, 34, 35, 36, 37, 38, 39, 40, 41, 42, 43, 44, 45, 46, 47, 48, 49, 50, 51, 52, 53, 54, 55, 56, 57, 58, 59, 60, 61, 62, 63, 64, 65, 66, 67, 68, 69, 70, 71, 72, 73, 74, 75, 76, 77, 78, 79, 80, 81, 82, 83, 84, 85, 86, 87, 88, 89, 90, 91, 92, 93, 94, 95, 96, 97, 98, 99, 100		✓							
飞椽	PC-W2F-04		✓							✓	✓
飞椽	PC-W2F-03		✓				✓				
飞椽	PC-W2F-02		✓								
飞椽	PC-W2F-01		✓			✓	✓				
飞椽	PC-W3F-18		✓		✓	✓					
飞椽	PC-W3F-17		✓			✓					
飞椽	PC-W3F-16		✓			✓					
飞椽	PC-W3F-15		✓			✓					
飞椽	PC-W3F-14	22, 23, 24, 25, 26, 27, 28, 29, 30, 31, 32, 33, 34, 35, 36, 37, 38, 39, 40, 41, 42, 43, 44, 45, 46, 47, 48, 49, 50, 51, 52, 53, 54, 55, 56, 57, 58, 59, 60, 61, 62, 63, 64, 65, 66, 67, 68, 69, 70, 71, 72, 73, 74, 75, 76, 77, 78, 79, 80, 81, 82, 83, 84, 85, 86, 87, 88, 89, 90, 91, 92, 93, 94, 95, 96, 97, 98, 99, 100		✓							
飞椽	PC-W3F-13		✓								
飞椽	PC-W3F-12		✓								
飞椽	PC-W3F-11		✓								
飞椽	PC-W3F-10		✓								
飞椽	PC-W3F-09		✓								
飞椽	PC-W3F-08		✓								
飞椽	PC-W3F-07		✓								
飞椽	PC-W3F-06		✓								
飞椽	PC-W3F-05	22, 23, 24, 25, 26, 27, 28, 29, 30, 31, 32, 33, 34, 35, 36, 37, 38, 39, 40, 41, 42, 43, 44, 45, 46, 47, 48, 49, 50, 51, 52, 53, 54, 55, 56, 57, 58, 59, 60, 61, 62, 63, 64, 65, 66, 67, 68, 69, 70, 71, 72, 73, 74, 75, 76, 77, 78, 79, 80, 81, 82, 83, 84, 85, 86, 87, 88, 89, 90, 91, 92, 93, 94, 95, 96, 97, 98, 99, 100		✓							
飞椽	PC-W3F-04		✓							✓	✓
飞椽	PC-W3F-03		✓				✓				
飞椽	PC-W3F-02		✓								
飞椽	PC-W3F-01		✓			✓	✓				
飞椽	PC-W3F-18		✓		✓	✓					
飞椽	PC-W3F-17		✓			✓					
飞椽	PC-W3F-16		✓			✓					
飞椽	PC-W3F-15		✓			✓					
飞椽	PC-W3F-14	22, 23, 24, 25, 26, 27, 28, 29, 30, 31, 32, 33, 34, 35, 36, 37, 38, 39, 40, 41, 42, 43, 44, 45, 46, 47, 48, 49, 50, 51, 52, 53, 54, 55, 56, 57, 58, 59, 60, 61, 62, 63, 64, 65, 66, 67, 68, 69, 70, 71, 72, 73, 74, 75, 76, 77, 78, 79, 80, 81, 82, 83, 84, 85, 86, 87, 88, 89, 90, 91, 92, 93, 94, 95, 96, 97, 98, 99, 100		✓							
飞椽	PC-W3F-13		✓								
飞椽	PC-W3F-12		✓								
飞椽	PC-W3F-11		✓								
飞椽	PC-W3F-10		✓								
飞椽	PC-W3F-09		✓								
飞椽	PC-W3F-08		✓								
飞椽	PC-W3F-07		✓								
飞椽	PC-W3F-06		✓								
飞椽	PC-W3F-05	22, 23, 24, 25, 26, 27, 28, 29, 30, 31, 32, 33, 34, 35, 36, 37, 38, 39, 40, 41, 42, 43, 44, 45, 46, 47, 48, 49, 50, 51, 52, 53, 54, 55, 56, 57, 58, 59, 60, 61, 62, 63, 64, 65, 66, 67, 68, 69, 70, 71, 72, 73, 74, 75, 76, 77, 78, 79, 80, 81, 82, 83, 84, 85, 86, 87, 88, 89, 90, 91, 92, 93, 94, 95, 96, 97, 98, 99, 100		✓							
飞椽	PC-W3F-04		✓							✓	✓
飞椽	PC-W3F-03		✓				✓				
飞椽	PC-W3F-02		✓								
飞椽	PC-W3F-01		✓			✓	✓				

Figure 17 Fill tables exported from BIM file

2) **Off-site:** record and edit in the excel files exported from the BIM model, with the help of interactive model in A360 (Figure 18)

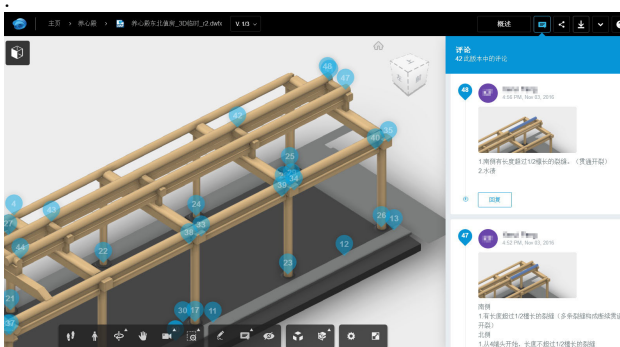


Figure 18 Marks and reviews in A360

In writing final survey reports, all kinds of data-visualized presentation can be explored to get specific conclusions; furthermore, reports itself can be organized by theme modules which are consistent and linked to BIM models (Figure 22).

3. DIFFICULTIES AND SOLUTIONS

3.1 Creating Thematic Drawings

As mentioned above, Views and drawings are organized by given themes, which can be represented with different graphic display (such as colours, patterns, transparency, line types). With category-based filters, this can be realized by overriding

visibility and graphic display to replace elements' original appearance according to their defined materials. However, to define the filters, some specific parameters have to be created in the project file.

3.1.1 Specific Parameters for Visualization and Descriptions: these are the two kinds of parameters in which the former is in the form of numbers, words and phrases to define the graphic display of the elements concerned, while the latter usually is in sentences to give explicit written description (for all differences between them, see Table 1). This configuration guarantees the data-based graphic representation as well as the human readable description in a natural language (Figure 19).

Themes are determined by the categories, amount and distribution of defined defects, so they are relatively flexible and on a case-by-case basis. Usually, combination of relating defects can make up a theme. In this project, for each building unit, the parameter “Defect phenomenon” is used for keynotes, whilst parameters “Defect description” from 1 to 9 are corresponding to nine themes at the most (Figure 20).

Table 1 Comparison between parameters for keynotes and for description

	Parameters for keynotes	Parameters for description
Symbol forms	Keynotes / keynote values	Natural language
Language forms	Numbers, words or phrases	Descriptive sentences
Text style	Standard	freely
Readers	Machine readable	Human readable
Function	To define the graphic display of the elements	To give explicit written description

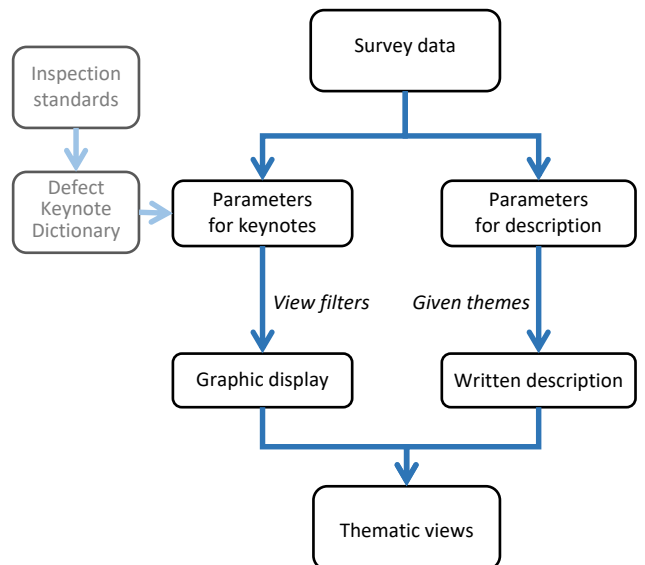


Figure 19 Parameters configuration for thematic drawings

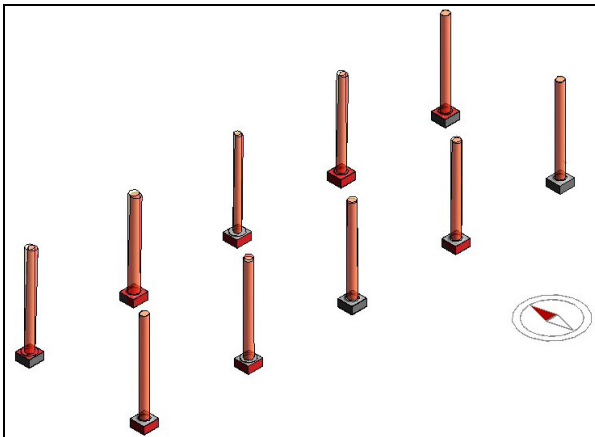


Figure 24 Representation of tilting and settlement of columns via linked shadow elements

4. CONCLUSIONS

The practice following the workflows mentioned in this paper proves that condition inspection based on HBIM is applicable, compatible and flexible, providing the possibility to improve the traceability and sustainability of heritage information, and to generate visualized, thematic and integrated presentation in high efficiency and consistency.

The dual-route workflows promote collaboration between BIM team and non-BIM team. Surveyors can easily take advantage of HBIM products without mastering BIM skills. This idea can be expected to make BIM more widely accepted in the field of heritage conservation.

This paper provides some solutions to the specific problems encountered during actual operation. For example, the DKD offers a sound tie between the BIM team and non-BIM team, and between site survey and final presentation; the application of shadow elements helps to improve the information management between whole and parts, ideal and actual, and 2D and 3D.

The project proves HBIM is independent from point cloud data, and point cloud is only one of the data resources available.

In the near future, the following works are expected to be done:

To develop and refine the dual-route workflow, and make it a computer-aided assessment system in condition inspection. Once building components information are tagged via interactive model, a series of presentation and deliveries would be generated timely. This idea can be extended to practice other than condition inspection.

To develop specific interactive BIM viewer for heritage information management, in which certain data can be edited and updated. It also has the potential to become a platform for expert review and public participation.

REFERENCES

Fu L., Xu Y., 1983, Buildings in the Hall of Mental Cultivation (in Chinese), *Forbidden City*, (6), pp 4–11

He, B., 2016. The historical development of the Hall of Mental Cultivation (in Chinese). *Forbidden City*, (12). pp. 52-53.

Li, K., 2015. *A study on HBIM-based informatization survey and measurement of Jiayuguan Pass* (in Chinese), master dissertation, Tianjin university, Tianjin, China.

Li, S., 2014. *A preliminary research about informatization survey and measurement of historical buildings based on BIM technology: under the background of informatization survey and measurement* (in Chinese), master dissertation, Tianjin university, Tianjin, China.

Logothetis, S., Delinasiou, A., Stylianidis E., 2015, Building information modelling for cultural heritage: a review, *ISPRS Annals of the Photogrammetry, Remote Sensing and Spatial Information Sciences*, Volume II-5/W3, 25th International CIPA Symposium 2015, 31 August – 4 September 2015, Taipei, Taiwan. pp. 177–183

Murphy, M., McGovern E., et al. 2009. Historic building information modelling (HBIM). *Structural Survey*, 27 (4). pp. 311–327.

Shan J., 2016, Thoughts on instituting researchful protection of the ancient architecture of Palace Museum, *Forbidden City*, (12). pp. 4-28.