

# Annual Report 2012



ASSOCIATION FOR EDUCATIONAL TRANSFORMATION

## Our Vision

To afford students, especially those from previously disadvantaged communities, the opportunity to enjoy equal access to higher education and to the world of work.

## Our Mission

To contribute towards the process of educational transformation by providing opportunities for students from poorly resourced communities to realise their full educational potential so that they are able to meet the challenges of life and make a positive contribution to society.



---

ASSOCIATION FOR EDUCATIONAL TRANSFORMATION



## A Word from the Chair

2012 will be remembered as the year when the media alerted the world to the crisis in education in South Africa. What was this crisis about? Schools went without textbooks; teachers skipped classes and those who did go to school spent little time teaching: teachers in black schools spent an average of only 3.5 hours teaching while their counterparts in former white schools taught 6.5 hours per day, reported the National Planning Commission. The World Economic Forum rated South Africa's education system one of the worst in the world, ranking it 133 out of 142 countries. This was not simply sensational media reporting. The effects of the weak education system are felt across the economy and lie at the root of problems such as rising unemployment, poverty and inequality.



Anne Mager joined classes at Bloekombos during the 2012 Winter School.

ASSET is not immune to these maladies. Rather, we recognise that they present enormous challenges. We are concerned that we should not become caught up in celebrating overall matric pass rates and focus instead on the quality of passes. The poor quality of maths and science passes in particular indicates that we need to set our goals higher. We must work harder with our partner schools to strengthen the quality of learner performance. We must encourage a shift away from the trend to give up mathematics for the far easier maths literacy. Only then will more students be able to pursue programmes

that require mathematics and science at university level. At the same time, we must be vigilant about improving the language skills of learners. Our aim must be to ensure that more learners from the LDP schools qualify for tertiary education and become eligible for bursaries. These goals are not quickly or easily achieved. A massive team effort lies ahead.

The effects of the education crisis do not mean that ASSET has not performed well in the past year. Indeed, as this annual report shows, both the LDP and Bursary programmes have delivered excellent results under difficult circumstances. This is due in no small part to the support of the wider ASSET community. It is the support of our partner schools, our donors, and the concerned individuals who serve on our committees that make it possible to speak of achievements and of challenges.

On behalf of the ASSET Board, I extend my gratitude to the donors and the talented and hard-working volunteers who give their time and expertise to provide oversight of our work (the Finance, Human Resources, Bursary and Learner Development Programme Committees). We trust that all will continue to support us as we take on the next round of tasks; we also hope that the newly formed ASSET Alumni will deepen and strengthen this work.

**Anne Mager (Professor)**

Chair



Gwen van Wyk, Bursary Administrator, assists a student.

*'ASSET told me that if there is a problem I should always feel free to come and talk about it. From that I realised that ASSET was not only about money but also about moral support.'*

*—Anelise Herman Dyonase*

*'I would like to tell those who think they have nothing: your background does not determine your future, it is your actions today that determine who you will be tomorrow.'*

*—Bongeka Mpemnyama*

# The Bursary Programme

The Bursary Programme, now in its 40th year, provides support for needy students from the Western Cape who are studying at higher education institutions. ASSET is very fortunate to enjoy the support of loyal donors.

## Funding for 2012

In addition to our own fund, the ASSET Educational Trust, ASSET administers funds on behalf of a growing number of donors. The following Trusts and Funds supported students in 2012:

FUND	AMOUNT (R)
Abe Bailey Trust	1,331,000.00
Abe Bailey Book Grant	64,157.52
Asset Educational Trust	500,000.00
Atlantik-Brücke e.V. (Global Bridges)	51,478.50
Cape Times Bursary Fund	408,400.00
Claremont Rotary (via CTBF)	16,955.00
DG Murray Trust	1,333,000.00
Francis Stripp Scholarship	133,112.04
Frank Robb Charitable Trust	110,000.00
GCF&EA Ross Trust	100,000.00
Leslie Hill Higher Ed Trust	913,380.00
Lily Ashton Educational Trust (via BoE Private Clients)	518,730.38
Lynette Croudace Charitable Trust (via Community Chest)	7,500.00
Rose Foundation	285,924.24
South Africa Foundation (SPZA)	109,437.00
StatPro South Africa (Pty) Ltd	210,780.00
Weiss Educational Trust	279,114.00
<b>TOTAL BURSARY FUNDS</b>	<b>6,372,968.68</b>

## Examination Results of the 2012 Bursars

The 412 students supported by the Programme in 2012 maintained the high standard set over the years, achieving a 83% pass rate in the final examinations. Of the total, 75 successfully completed their courses, 265 were promoted to the following year of study and 72 failed.



Charnel Young, Bursary Admin Assistant, sorting out paperwork with a bursar.

*ASSET receives many letters of appreciation from successful matriculants and bursars, reminding us of the importance of both the Learner Development Programme and the bursaries offered by ASSET. These letters are a tribute to our donors who make such a difference to the many young students who are keen to study and improve their lives, when given the opportunity to do so. A selection of letters from bursars (edited due to space constraints) is included with the Bursary Programme report.*

BURSAR RESULTS 2012			
	University	Cape Peninsula University of Technology	Total
Completed	20	55	75
Promoted	92	173	265
Failed	27	45	72
<b>Total</b>	<b>139</b>	<b>273</b>	<b>412</b>





**Phelo Sayedwa** I grew up in a very small village (Matatiele, Kwa-Zulu Natal) where I completed my matric in 2008. I came to Cape Town in 2009 after I finished matric. I applied for an ASSET bursary because there was no other means for me to continue with my studies. I was very happy

and appreciative to learn that I was selected as the recipient of a bursary.

I am a Medical Biology major with an emphasis in physiology and anatomy. I plan to pursue a career in medicine upon graduating from the University of the Western Cape in early 2013.

It was difficult at first when I got to varsity because I couldn't speak English well and I could not understand

the lectures in class and that put an extra load on my shoulders because I had to self-study. That made the whole course extremely difficult. I improved my English through reading books and also through practising to speak and writing new words on my vocabulary book. Reading English books was not easy either because I had my academic work to focus on but I managed to do it so anyone can!

The ASSET bursary has lightened my financial burden and allows me to focus more on the most important aspect of school, learning. The bursary has inspired me to help others and give back to the community. I hope one day I will be able to help students achieve their goals just as ASSET has helped me.



### NSFAS Partnership

Our partnership with the National Student Financial Aid Scheme is now in its 16th year. This partnership ensures that the Programme is able to supplement the ASSET bursary award with a loan so that bursars are able to meet all their needs and focus their attention on their studies.



The Weiss Educational Trust supported five students in 2012.

*Left to right:* Patricia Whitelock (trustee), Moeneebah Solomon (bursar), Tessa Dace (trustee), Nelisa Mbadamana (bursar), Antonio Gambino (bursar), Zwelithini Mxhego (bursar), and Nigel and Judith Weiss (donors)

March 2012 First year Bursary students' orientation day



## Graduates

The 75 bursars who completed their course of study at the end of 2012 cover a wide range of fields (see table).

QUALIFICATIONS GAINED BY THE 2012 BURSARS					
DEGREES	NO.	DEGREES	NO.	NATIONAL DIPLOMAS	NO.
B Sc Chemical Science	1	LLB	1	Environmental Health	2
B Sc Physiotherapy	1	B Tech Taxation	3	Sport Management	1
B Sc Computer Science	2	B Tech Project Management	2	IT	2
B Sc Environmental & Water Science (Hons)	1	B Tech HR Management	1	Internal Auditing	2
B Sc Molecular Biology	1	B Tech Chemical Engineering	1	Entrepreneurship	2
B Sc Medical Bioscience	2	B Tech Tourism	1	Office Management & Technology	4
B Sc Complementary Medicine	1	B Tech Marketing	1	Cost & Management Accounting	2
B Sc Maths & Stats	1	B Tech Food Technology	1	Operations Management	1
BA	2	B Tech Cost & Management Accounting	2	Management	4
B Social Science	2	B Tech Financial Information Systems	1	HR Management	4
BA Human Ecology	1	B Tech Environmental Health	1	Accounting	6
B Com Accounting	1	B Tech Public Management	1	Retail Business Management	2
B Com General	2	<b>NATIONAL DIPLOMAS</b>	<b>NO.</b>	Food Technology	1
B Com Financial Accounting	1	Maths Technology	3	Financial Information Systems	1
B Education FET	1	Analytical Chemistry	1	Clothing Management	1



**Lihle Mqayi** I attended ASSET's Saturday classes at Bulumko Secondary School in 2004. I joined the Saturday classes to improve my Mathematics and Physical Science marks so as to qualify for what I intended to do at university. At the time I was also looking for a bursary since at home we did not have

enough money to pay for my tuition fees. In January 2005 I qualified for an ASSET bursary because of my pass rate and I was accepted at the University of the Western Cape to study for a BSc degree in Environmental and Water Sciences.

However, I was still financially challenged because the ASSET bursary only covered 60% of my fees. In 2006 Mr Derek Joubert, then ASSET Director, informed me about the Rose Foundation bursary that was offered to students who were doing environmentally-related studies. I was the third student to be offered a Rose Foundation bursary through ASSET and it covered all

my academic needs. While I was an ASSET bursary holder I also worked for ASSET as a student tutor during their winter and spring school classes. I was an active member and chairperson of Student in Action Club for two consecutive years (2006–7).

Through ASSET I learned a lot about serving others and ploughing back into the community. As a result now I am mentoring children at the Mary Moodley home in Johannesburg and also empowering youth with life skills. Today I have a Bsc Honours in Environmental and Water Sciences and work as an Environmental Adviser for the Rose Foundation.

I believe that without the support of ASSET (donors, patrons, teachers, office staff and Student in Action Club) and the Rose Foundation I would not have been where I am today.

I would encourage all the current bursary holders to do their best in their studies. I also encourage all those who have benefited through ASSET to plough back time in mentoring students and financial resources to keep ASSET growing.



'ROSE is proud to have made a contribution to the future leaders of tomorrow. What is warming is the humility shown by the young bursars who grasp the opportunity and continue to make a success of their chosen vocation despite the challenges thrown at them. We will continue to support learners pursuing a career in the environmental field. The partnership with ASSET is highly valued and should continue in the foreseeable future.'—Raj Lochan, Rose Foundation Director



*Left:* Rose Foundation bursary recipients listening attentively to Raj Lochan



# ASSET Alumni

A group of seven ex-bursars from ASSET met early in 2012 to discuss the feasibility of starting an ASSET Alumni. After a series of meetings on several Saturday mornings, an interim Executive Committee was established. Yes, it happened at last – the long-awaited initiative for this amazing non-profit organisation that has changed lives of many from hopeless to success.

It was agreed to launch the Alumni in March 2013!

Our vision is to be a prominent, respected organisation whose members make a meaningful contribution to ASSET, current students and each other. Our mission is to promote the interests of ASSET by strengthening the ties of goodwill and communication between ASSET, the Alumni and students, and by maintaining programmes to serve their needs.

The Alumni aims to support current ASSET students, both LDP and tertiary, through mentorship, career guidance, counselling, life skills, internship, academic and financial assistances.

All past bursars and those who are in their final year will be invited to join this initiative. All ASSET bursars who have attained a certificate, diploma or degree will be eligible to join the Alumni to make their positive contribution towards bettering the lives of the hopeless in education.

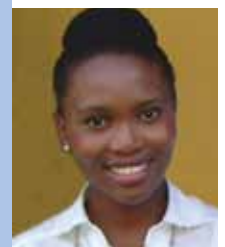
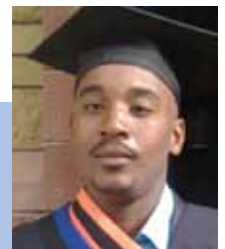
For more information, visit our website, [www.asset.org.za](http://www.asset.org.za).



Alumni committee members Odwa Siswana (above), Mathemba Lolwana (below left), and Xolisa Tshongolo, chairman of the Alumni committee (below right) working on the Alumni's mission and vision for the future



The other committee members are Lelethu Bam (right), Luzuko Sidindi (middle right) and Tandeka Mgudlwa (bottom right).



'We want to see the students having a positive attitude towards reaching their goals. The sky is the limit and anything is attainable. Working hard, discipline and enthusiasm are the keys to a successful future.'

—Alumni Committee



**Sintu Phulani** Today I am a proud graduate who has been shaped by ASSET through financial, academic and personal support. I will forever be appreciative to all the stakeholders who selflessly make contributions to ASSET to enable underprivileged children like me, who have potential and a desire to study further, to make

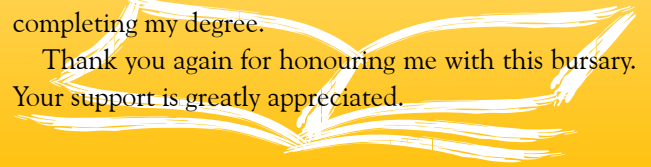
something out of their lives.

Your generosity will help me to attain a brighter future, not only for myself, but my family and my community at large. ASSET provided me with additional financial support throughout my educational career and I have worked hard to prove myself as a responsible, capable and dedicated student by passing all my subjects and getting distinctions.

I am eternally grateful to the amazing donors Atlantik-Brücke e.V., ASSET Educational Trust and ASSET's superb staff who always made me feel comfortable whenever I visited their offices in Mowbray.

I started attending ASSET Saturday classes when I was doing matric in 2007 at Bulumko High School in Khayelitsha – that made a significant difference in my matric results which is how I managed to acquire university access. I applied for an ASSET bursary to study Public Management/Law at the Cape Peninsula University of Technology. Throughout the years that I have been at university, ASSET has been there for me in all aspects required by a student and now I am proudly completing my degree.

Thank you again for honouring me with this bursary. Your support is greatly appreciated.

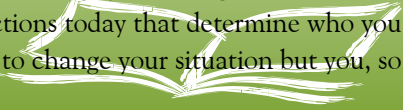


**Bongeka Mpemnyama** I am in my final year in BCom Finance at the University of the Western Cape. My interest in finance started at a very young age; I remember in primary and high school I used to sell sweets and chips. I had a dream of changing my life, and the lives of my family and those in need.

I went to Ikamvalethu Secondary School in Langa, where you will find no facilities such as computers or sport equipment. When I was Grade 12 in 2008, our principal told us about Saturday classes, which we attended at St Francis.

In 2009 I was accepted at UWC but my parents could not pay my registration fee of R3500. It felt like the end of the world, but ASSET bursary department paid my registration. They also paid for my book allowances and helped with transport to campus.

A special thanks to ASSET: you make people like me who were nothing to be something. Now my dream of having a degree one day has come true, only because of your intervention in my life. I would like to tell those who think they have nothing: your background does not determine your future, it is your actions today that determine who you will be tomorrow. Nobody is going to change your situation but you, so wake up and act!



*Sintu Pulani, a B. Tech Public Management student at CPUT, Dr Beate Lindemann (Global Bridges) and Lithiko Mthobeli (BA student at UWC)*

**ATLANTIK-BRÜCKE undergoes a name change!**

Atlantik-Brücke, under the leadership of Dr Walther Leisler Kiep and Dr Beate Lindemann, first collaborated with ASSET in 2007. They have provided study grants to over ten South African students. In July 2012 their name changed to Global Bridges.

Over the years Dr Kiep and Dr Lindemann have become friends of ASSET and visit us every January to meet their 'Global Bridges Fellows'.



**Xolelwa Geraldine Mthi** I am 23 years old. I applied for ASSET Bursary in 2007 during my matric year after I had attended the Saturday classes in Khayelitsha at Bulumko High School during that same year.

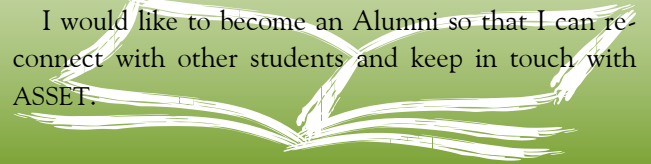
My application to study LLB (Law) at the university of the Western Cape in 2008 was accepted, as was my application for funding from ASSET. I was very happy and eternally grateful. I studied the four-year stream LLB and through prayer I finished in record time.

Throughout the four years at University, ASSET has been there for me and supported me financially,

emotionally and academically. This is a letter of gratitude, an acknowledgment of the benefit that I received from ASSET. These words will never amount to the appreciation that not only I feel, but my family too.

I completed my Law Degree and am working for ENS (Edward Nathan Sonnenbergs) law firm in Cape Town as a Candidate Attorney. I graduated in March 2012. ASSET has played a big role in my life and to my achievements so far and I will continue to share my success with others in need and make a difference in other people's lives as ASSET has done in my life.

I would like to become an Alumni so that I can re-connect with other students and keep in touch with ASSET.



**Anelisa Herman Dyonase** I just finished my undergraduate studies in BSc (Mathematics and Statistical Science) at the University of the Western Cape.

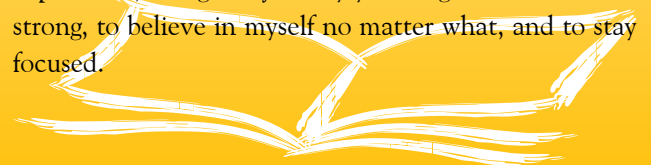
It all started in February 2008, while I was still doing my matric. My classmates kept on telling me how wonderful it was for them to attend Saturday classes which were taking place at Bulumko High School. I am very proud to say that the first day I attended the class changed my life; the teachers were very amicable and encouraging, that is when I fell in love with my studies, knowing that someone such as ASSET was there for me. I am very proud to say that I moved from average E to average B.

In 2009 I enrolled for my first year at the University of the Western Cape. The first year was very tough because it was a big transition from high school to university. I remember vividly the day I was so scared to submit my June results to the bursary department at ASSET. What I was expecting is that ASSET was going to withdraw its

bursary, but ASSET told me that if there is a problem I should always feel free to come to the office and talk about it. From that I realised that ASSET was not only about money but also about moral support.

From that day I never failed even a module, and this year (2012) I am finishing my degree through ASSET's support and love. I know that ASSET made me be accountable, not only at school but also in my life in general. They taught me principles about life and to give something back to my community. I am proud to say that in 2011 I began to tutor Grade 12 mathematics at Uxolo High School. This year I tutored a Grade 10 mathematics student at my school, Intlanganiso High School.

This made me fall in love with teaching so I applied to a NGO called Teach SA and got accepted Thank you ASSET. It has been a wonderful and challenging experience; along the journey you taught me how to be strong, to believe in myself no matter what, and to stay focused.







**Bloekombos  
Tutors**



Mrs Nopote  
Sinenjongo



Winter school



Learn  
Develop  
Progress



Bloekombos  
cooks



Tutor workshop



Tutors meeting



Pa







principal  
with pupils



Liaison



Sinenjongo learners



Partner  
Development  
Programme



Parents cook for  
Saturday school



Liaison



Masiphumelele  
Tutors



Partnership



Masibambane

Tutors





# Learner Development Programme

In keeping with the ASSET vision and mission, the Learner Development Programme (LDP) aims to assist disadvantaged Grade 11 and 12 learners from township schools to achieve a quality National Senior Certificate pass that enables them to enter higher education institutions.

In 2012 all our schools, except one, performed better than the national average of 73,9%. The Western Cape Education Department (WCED) overall pass rate was 82,8%. ASSET schools achieved an overall pass rate of 82,2% in 2012.

## 2012 Overall Results of the ASSET Partner Schools

- Bloekombos High School 83,9% (82% in 2011, 76% in 2010, 62% in 2009): Second in the WCED Most Improved Schools category.
- Masibambane High School 93% (91,6% in 2011, 96% in 2010, 77% in 2009): Fifth in the WCED Most Improved Schools Category.
- Masiphumelele High School 59% (85% in 2011, 82% in 2010, 67% in 2009).
- Ocean View High School 88,1% (96% in 2011, 78% in 2010). These learners attended Masiphumelele Centre.
- Sinenjongo High School 94% (88,5% in 2011 and 99% in 2010). These learners attended the Bloekombos centre: Tenth in the WCED Most Improved Schools Category.

### 1. Bloekombos High School Centre

Bloekombos obtained an overall pass rate of 83,9% in 2012 compared to 82% in 2011. (*The number in brackets denotes 2011 figures.*)

A total of 224 (181) Grade 12 learners from Bloekombos High School attended the Bloekombos LDP Centre. Of these, 188 passed their National Senior Certificate Examinations:

- 48 (47) of these were Bachelor passes which qualifies the learner to complete a degree course at University
- 82 (66) of these were Diploma passes which qualifies the learner to complete a diploma study course at a University of Technology. Once they complete their three-year diploma programme, students can progress to the degree courses (B Tech).

## SUMMARY OF RESULTS OF LDP LEARNERS FROM OUR FIVE SCHOOLS

Total number of Candidates	822
Number of passes	676 (82,2%)
Number of Bachelor passes	203
Number of Diploma passes	301
Number of Higher Certificates	170
Number of NSC	2



Mrs Anacletta Sam, who teaches English at Masiphumelele. She has been part of the LDP for five years.

- 56 (34) learners achieved a Higher Certificate pass which enables them to access higher education through Further Education and Training Colleges (FET) and 2 obtained the NSC.

Collectively the school obtained a total of 9 (12) subject distinctions.

There has been an increase of 43 learners doing Grade 12 in 2012. The number of Bachelor passes were relatively stable. However, the number of Diploma passes have increased from 66 to 82.

A total of 92 (87) learners from **Sinenjongo High School** (Joe Slovo Camp in Milnerton) attended the Bloekombos LDP Centre. 87 (77) learners passed (94%):

- 32 (19) obtained Bachelor passes
- 38 (37) obtained Diploma passes
- 17 (21) obtained Higher Certificate passes

A big increase in Bachelor passes resulted in more learners gaining access to university. It is pleasing to note that there is a drop in Higher Certificate passes in 2012.

## 2. Masibambane High School

Masibambane's overall pass rate was 93% with 208 (152) learners passing out of a total of 225 (166):

- Number of Bachelor passes 71 (39)
- Number of Diploma passes 89 (74)
- Number of Higher Certificate passes: 48 (39)

Collectively the school obtained 20 (24) subject Distinctions.

The number of learners writing Grade 12 increased by 59. There was a big increase in the number of Bachelor passes compared to 2011, from 39 to 71, ensuring that more learners have gained access to university.



### 3. Masiphumelele High School

Masiphumelele's Grade 12 overall pass rate decreased from 85% in 2011 to 59% in 2012. Challenges prevailed in terms of the school's management and governance which unfortunately also involved the community as a whole. This impacted negatively on the whole school which resulted in the drastic drop in the Grade 12 results. We are very encouraged by the fact that the concerns are being addressed by both the school management/governing body and the Education Department's District Office (South Metropole). A plan of action has been put in place to assist ASSET in supporting the learners of this very impoverished community.

On a more positive note: 195 learners wrote the Matric examination, 59 more than the previous year:

- 33 (39) Bachelor passes
- 42 (38) Diploma passes
- 36 (26) Higher certificate passes

The school obtained a total of 22 subject distinctions. The number of Bachelor passes has decreased by 6, while the Diploma passes increased by 4. The Higher Certificate passes increased by 10.

Ninety-three **Ocean View High School's** Grade 12 learners attended the Masiphumelele Centre, of which 82 passed (88.1%). This included:

- 19 Bachelor passes
- 50 Diploma passes
- 13 Higher Certificate passes

#### DAPHNE WILSON BIRTHDAY DONORS

Allanson Prof & Mrs Brian  
Bircher Mr & Mrs John  
Breytenbach Col & Mrs  
Cairns Mr & Mrs Ian  
Campbell Mrs Leonie  
Carter Mr & Mrs Colin  
Clogg Mr & Mrs John  
Crowe Mr & Mrs David  
Falconer Mr & Mrs Jock  
Harcourt-Wood Mr & Mrs Rory  
Harris Mrs AL  
Huskisson Dr & Mrs Ian  
Liget Mrs Val  
Lightfoot Mrs Janitha  
Mitchell Mrs Isabel

Mitchley Mrs Trish  
Munro Mr & Mrs Allan  
Naraway Rev & Mrs Don  
Parkes Mrs Margaret  
Preston Mrs Margaret  
Sharples  
Smuts Dr Marina  
Thomas Mr & Mrs Peter  
Toms Mr & Mrs Tremayne  
Walker Mr & Mrs Dennis  
Anonymous

A pledge by Colin Eglin was received after the end of the financial year in March 2013 and will reflect in next year's financial statement



Daphne Wilson was the pioneer of what was originally called the Enrichment Programme, which later became the Learner Empowerment Programme and finally the Learner Development Programme (LDP) as it is known today. Daphne chaired the Enrichment Programme Committee in the early 1980s.

Daphne celebrated her 90th birthday in 2012. In lieu of gifts, her family and friends made donations to the LDP. We would like to thank Daphne and everyone who contributed most sincerely for their support.

## THE 2013 LEARNER DEVELOPMENT PROGRAMME

### 2013 Registration

A total of approximately 1 690 Grade 11 and Grade 12 learners will be registered for the LDP in 2013.

The Grade 11 learners will receive 23 Saturday School sessions during the year and Grade 12 learners attend 29 Saturday sessions. A week-long Winter School (four days) will be held during the July vacation for both Grade 11 and 12 learners. In addition a Spring School (one week) for the Grade 12 learners will be held during October 2013.

### Saturday School curriculum

ASSET will employ 45 well-qualified teachers during 2013. The following subjects will be offered: English, Mathematics and Mathematical Literacy, Physical Science, Accounting, Economics and Life Sciences.



A Life Skills and Career Guidance course will be offered to Grade 11 and 12 learners throughout the year, including the Job Shadow Programme (four days) during the October vacation (for Grade 11).

### Teacher workshops and meetings

Workshops and meeting with subject teachers will be held throughout the year, starting on 26 January 2013 where the ASSET tutors meet with the schools' subject teachers to discuss year plans in each subject. This will ensure that what ASSET teaches on a Saturday dovetails with what is taught during the school week.



Family members of the late Mrs Victorine Rossling volunteered their time to assist the cooks at ASSET's Saturday School 2012 at Bloekombos High School. ASSET also received donations from ADH cc, Milford Construction cc, and Ms Ethel Hamman in memory of Mrs Rossling.

### LDP DONORS JANUARY–DECEMBER 2012

Abe Bailey Trust	397,500.00
ABSA Group	550,000.00
ADH Projects	5,000.00
Andrew Ken	12,000.00
Anonymous	350,000.00
BoE Educational Foundation	350,000.00
Claude Leon Foundation	250,000.00
Coronation Fund Managers	100,000.00
Dietrich M (Mrs)	400.00
Douglas Jooste Trust	45,000.00
ESKOM	15,000.00
Hamman Ethel (Mrs)	5,000.00
HCI Foundation	50,000.00
Hanna Paper Fibres	59,760.00
Harding Thelma	1,600.00
McGregor J Mr	4,000.00
Milford Construction cc	500.00
Mort Jonathan	11,000.00
My School Programme	187.67
Page Anne	25,000.00
Robin Hamilton Trust	90,000.00
Sol Plaatje Educational Project	115,797.50
South Africa Foundation (SPZA)	140,000.00
Vine Charitable Trust	300,000.00
Wilson D (90th Birthday)	5,200.00
<b>TOTAL LDP</b>	<b>R2,882,945.17</b>



## Career guidance

This intervention is spread across the year and is based on specific needs identified by each school. The ASSET schools are now all familiar with job shadowing, after we piloted this in 2012. We plan to increase the number of Grade 11s participating in October 2013. The aim is to help learners make informed choices with regard to their study paths.

## Principal meetings

Meetings are held with our principals during the year (at least once per term). The meetings involve feedback from schools and to schools, to ensure that the LDP is running effectively.

## Parent meetings

ASSET attends partner schools' first parent meetings where new parents are introduced to the ASSET Programme.

## Relationship with the Western Cape Education Department (WCED)

ASSET ensures that the relevant Education District offices (North and South Metropoles) are fully aware of our LDP Year Plan. Regular review meetings are going to take place this year.

## Monitoring and evaluation

Each week the teaching material is monitored at the ASSET office to ensure that it is of high quality. ASSET part-time tutors meet three times a year to evaluate the Programme and plan for the following term. Meetings are held with the teachers in the schools to ensure that the curriculum content taught on a Saturday is relevant.

The Executive Director visits the partner schools at least twice a term during the year to meet with the principals. The aim of these meetings is to record learner test and examination results during the year with a view to measuring the impact of the ASSET Programme in the final Senior Certificate Examination.

## Conclusion

ASSET is very grateful to all its donors for their contribution to the Learner Development Programme. The fact that our partner schools do not hand pick learners when they apply from primary schools and are still able to produce the Grade 12 results they do, is commendable.

## Robbie Gow-Kleinschmidt

Executive Director

January 2013

## CATEGORY 2: MOST IMPROVED SCHOOLS

### Category 2a: Most improved Public schools

Awards will be made by the Western Cape Education Department to schools that have shown the greatest improvement in the numbers that pass over the period 2010–2012. Improvement is measured in terms of *the numbers passing*.

Each school will receive an award of R15 000 for the purchase of teaching and learning support material.

1 Mōrester Sekondêre Skool

2 BLOEKOMBOS SEKONDÊRE SKOOL

3 Leiden Secondary School

4 Wesbank Sekondêre Skool

5 MASIBAMBANE SECONDARY SCHOOL

6 Malibu Sekondêre Skool

7 Simanyene Secondary School

8 Iqhayiya Secondary School

9 Percy Mdala High School

10 SINENJONGO HIGH SCHOOL

Schools highlighted are ASSET partner schools.



## Comments from our Principals

**Mrs Nopote, Sinenjongo High School** ASSET has indeed made a significant improvement at Sinenjongo High School. ASSET came in at the right time and made a crucial turnaround in Sinenjongo – the pass rate in 2008 and 2009 for Grade 12 was 27% and through ASSET we managed to glimpse a better future. Sinenjongo has improved drastically through this programme: in 2012 the school achieved 95%, 2011 88% and 2010 98%. As a school we see ASSET as a crucial part of our academic performance and would like this partnership to continue for the betterment of our children and for the development of the underprivileged community of Joe Slovo.

**Mr Maci, Bloekombos High School** Our school was placed second in the Western Cape Education Department's 'Most Improved Schools' category for 2012.

We continue to reap the benefits of working with ASSET in various ways:

- We have an increased number of learners enrolled at UCT and even had one learner enrolled at the University of Stellenbosch.
- Most of our learners in the school choir are top performing learners.
- The staff development workshop has led to improved Grade 9 results in Maths and English.
- The nutrition programme has had a positive impact on learner attendance on Saturdays.
- The career guidance programme has led to more learners applying for tertiary education and enrolling at higher education institutions.

**Keith Klein, Ocean View High School** It is very rewarding and beneficial for the upliftment of our community, and enriching for our learners and teachers to have ASSET's programmes available to our school.



Enoch Nomnga, LDP assistant coordinator, with Wendy Maqala, the chairperson of the School Governing Body at Masiphumelele.

Keith Klein, principal of Ocean View High School, whose learners joined the LDP for the first time in 2011.



### **Mrs Anacletta Sam (Deputy Principal) Masiphumelele High School**

Having ASSET at Masiphumelele is a blessing. ASSET has played a major role in improving learner performance. Although last year there was a drop in our pass rate, we still had learners who performed very well. ASSET also encourages learners to make informed decisions regarding career choices and life skills, as these are among the organisation's priorities and they support these programmes financially. Our learners are able to attend open days and life-skills workshops funded by ASSET. They are also introduced to the world of work as they attend job shadowing programmes. The value of ASSET at Masiphumelele at large is highly appreciated and we hope that this relationship will continue.



**Rajan Naidoo, Masibambane High School** Visitors to Masibambane High School on a Saturday morning are often in awe: the school is a hive of activity, over 600 learners from three different schools are busy in class.

The difference the Saturday Programme makes in the lives of the learners is massive. Over the years with the support of the Saturday School Programme, Masibambane has succeeded in consistently producing a pass rate in excess of 90%.

It does not end there because success in the Grade 12 pass rate has instilled in our learners a phenomenal sense of self belief and established a culture of excellence within the school as a whole. This is evident in some of our other achievements which include:

- 2012: Andiphe Ndlebe – 3rd highest mark in Economics in NSC exam.
- 2012: Nedbank/Provincial Treasury Award for Excellence in Commerce
- 2012: Best Production Award in Artscape High Schools Drama Festival
- 2012: Best Actress Award in Artscape High Schools Drama Festival
- 2012: Quarter Finalists in Cape Argus Quiz
- 2013: Nozuko Qwabe awarded bursary in Nedbank/Provincial Treasury Economics Essay Competition.

It is critically important that learners are involved in extra and co-curricular activities to complement classroom teaching. Learner enthusiasm for participation in these activities indicates a culture of learning which can only be built on the foundations of a culture of academic excellence which is the main focus of the ASSET Learner Development Programme.

The point I am driving at is that while the focus of the ASSET LDP is on academic excellence, in the final analysis the attainment of academic excellence breeds a culture of success which in turn contributes to a highly focused educational ethos.

Raj Naidoo, principal Masibambane High School



# ASSET Educational Trust



The **ASSET Educational Trust** is an essential source of bursary funding. We are extremely grateful to the donors of the AET for their support and the commitment of the Trustees.

## 2012 CAPITAL FUNDS HELD BY THE ASSET EDUCATIONAL TRUST

Arthur Abelsohn Fund	15,000
ASSET Educational Trust Fund	175,000
Bernard & Rita Brodie Fund	339,525
Daphne Wilson Book Fund	22,180
Esther Wides Fund	50,460
Freda Whitehead Trust Fund	31,197
George & Mary Ellis Fund	523,455
Gregoire Boonzaier Fund	124,000
Hansi Pollak Fund	184,343
James McGregor Fund	26,000
JC Leipoldt Memorial Trust Fund	225,646
JM Grieve Fund	80,000
Kurt & Joey Strauss Fund	50,000
Leo Marquard Fund	5,000
Malherbe Trust Fund	50,000
Malopo Trust Fund	50,000
Max Policansky Fund	182,330
May Hillhouse Fund	755,000
Merge Fund	15,000
Philip Schock Foundation	114,000
Susan Kooy Fund	818,116

**TOTAL** **R3,836,252**

## ASSET EDUCATIONAL TRUST

### LIST OF DONORS

#### JANUARY–DECEMBER 2012

Bevis A Mrs	600.00
Dosè R Mrs	5,000.00
Eskelson Will Trust	402.00
Estate Late E Einhorn (capitalised)	2,989.40
McGregor J Mr (capitalised)	4,000.00
Philip Schock Foundation (capitalised)	15,000.00
Rathbone FP Esq	11,888.00
Spitzglass G Mrs	100.00
George Henry Stark Trust Fund	5,236.36
Wilson D (capitalised)	180.00
Wisdom Trust	3,722.90
<b>TOTAL</b>	<b>R49,118.66</b>

# Summarised Statement of Activities

for the year ended 31 December 2012 (figures in Rand)

*This statement does not form part of the annual financial statements and is unaudited.*

	LDP	BP	2012 Endowment Fund	Total	2011
<b>REVENUE</b>					
Administration fees	–	946,322	–	946,322	946,178
Donation income	2,882,945	–	–	2,882,945	2,816,422
Interest received	52,480	52,480	15,432	120,392	118,444
Registration fees	405,351	–	–	405,351	267,866
	<u>3,340,776</u>	<u>998,801</u>	<u>15,432</u>	<u>4,355,009</u>	<u>4,148,910</u>
<b>EXPENSES</b>					
Admin staff salaries	946,217	848,325	–	1,794,542	1,737,523
Programme expenses	1,958,585	41,069	–	1,999,654	1,834,438
Office expenses	256,368	92,075	–	348,443	325,059
	<u>3,161,170</u>	<u>981,470</u>	<u>–</u>	<u>4,142,639</u>	<u>3,897,020</u>
<b>NET OPERATING SURPLUS (DEFICIT)</b>					
	<u>179,606</u>	<u>17,332</u>	<u>15,432</u>	<u>212,370</u>	<u>251,890</u>
<b>CHANGE IN NET ASSETS</b>					
				212,370	251,890
Net assets, beginning of the year				1,530,914	1,279,024
Net assets, end of the year				1,743,284	1,530,914
<b>SUMMARISED BALANCE SHEET</b>					
Fixed assets				484,085	513,198
Current assets				3,880,820	1,768,756
Non-current liabilities				(72,291)	(76,809)
Current liabilities				(2,549,330)	(674,231)
<b>NET ASSETS</b>				<u>1,743,284</u>	<u>1,530,914</u>
<b>Net assets represented by the following funds:</b>					
Capital fund				440,000	440,000
Learner development programme				842,408	662,803
Bursary programme				108,437	91,105
Endowment fund				352,438	337,006
				<u>1,743,284</u>	<u>1,530,914</u>

## BURSARY COMMITTEE

Mrs Thelma Harding *Chair*  
Ms Melanie Mitchell *University of the Western Cape*  
Mr Nicky Arends *Cape Peninsula University of Technology*  
Mr Graham Renecke *Cape Peninsula University of Technology*



*Left to right: Charnel Young, Gwen van Wyk, Jenny Austin, Tandeka Ndiki, Nobahle Ndamane, Enoch Nomnga, Robbie Gow-Kleinschmidt, Nokhaya Lapi*

## ASSET EDUCATIONAL TRUST TRUSTEES

Mrs Rosemary de Waal *Chair*  
Mr Brian Béchet  
Mrs Bonita Bennett  
Mr Nat Bongo  
Ms Salma Ismail  
Mr Derek Joubert  
Mr James McGregor  
Mr Roy Ngcelwane

## BURSARY PROGRAMME

*Established in 1972, it operated under the auspices of the Cape Western branch of the South African Institute of Race Relations until ASSET took it over in 2003.*  
Supports students at tertiary institutions. Priority is given to needy applicants who have attended less advantaged schools in the Western Cape.

## LEARNER DEVELOPMENT PROGRAMME

*Saturday School established in 1982*  
Accommodates Grade 11 and 12 learners. Provides tuition in main school subjects throughout the year.

## STAFF

*Executive Director Robbie Gow-Kleinschmidt*  
*Finance Manager Jenny Austin*

## BURSARY PROGRAMME

*Bursary Administrator Gwen van Wyk*  
*Admin Assistant Charnel Young*

## LEARNER DEVELOPMENT PROGRAMME

*Programme Coordinator Tandeka Ndiki*  
*Assistant Coordinator Enoch Nomnga*  
*Data Capturer Nobahle Ndamane*

## DIRECTORS

*Prof Anne Mager Chair · Mr Robbie Gow-Kleinschmidt Executive Director*  
*Ms Lynn Campbell · Mrs Rosemary de Waal · Prof George Ellis ·*  
*Mrs Joy Fish · Mrs Thelma Harding · Mr Jannie Isaacs*  
*Mr James McGregor · Mr Rajan Naidoo*

## PATRONS

*Dr Marcus Balintulo · Prof Njabulo Ndebele · Prof Brian O'Connell*

Letters have been edited due to space constraints.

Photographs © ASSET · DTP by User Friendly · Printed and bound by Creda Communications





**ASSOCIATION FOR EDUCATIONAL TRANSFORMATION (ASSET)**

5 LONG STREET, MOWBRAY, 7700, CAPE  
TELEPHONE Bursary Programme 021 685 1025  
Learner Development Programme 021 686 4701  
FAX 021 685 2501

EMAIL [admin@asset.org.za](mailto:admin@asset.org.za) · WEBSITE [www.asset.org.za](http://www.asset.org.za)

NPO 027-084 · PBO 930002121 · Registration No 2002/028121/08