



Together with the Ice Age Trail Alliance, Ice Age Trail Communities enhance appreciation and awareness of the natural and scenic beauty of the thousand-mile Ice Age National Scenic Trail. Visit our Trail Communities to enjoy small-town hospitality, local supper clubs, hometown bakeries, farm-to-table eateries, and sites highlighting Wisconsin's cultural heritage.

For current trail conditions, to connect with local volunteers, or to plan your Ice Age Trail hike, visit iceagetrail.org.

The county seat of the "County of Trails", **Antigo**, welcomes residents and visitors alike with a relaxing, stress-free atmosphere. Unwind in Antigo and enjoy shopping, history, great food, and all of the best recreational opportunities the Northwoods of Wisconsin has to offer.



WHERE TO HIKE

Unless otherwise noted, dogs are allowed on the Ice Age Trail and should be under control and leashed at all times.

Hikers should plan ahead before venturing out on these remote segments. Print resources are encouraged, as cell service can be patchy. Additionally, logging has a constant influence on the Ice Age Trail in this region. Check for route updates with the local volunteer chapter before beginning your hike.



KETTLEBOWL SEGMENT

(9.9 miles)

This rugged and isolated segment boasts tremendous views during leaf-off season as it follows forest lanes through hilly terrain dotted with huge granite erratics and kettles.

LUMBERCAMP SEGMENT

(12 miles)

This segment brings hikers on a trek through Peters Marsh State Wildlife Area and a through a forested outwash plain before coming to a dramatic exposure of boulders in the Baker Lake basin.

SUMMIT MORaine SEGMENT

(12.2 miles)

This segment traverses lowland bogs, hardwood forests, rolling ski trails, and Veterans Memorial Park. Keep an eye out for eskers and glacial drift stones as the segment wanders along glaciated and hummocky terrain.

HIGHLAND LAKES SEGMENT

(12.8 miles)

This segment darts along lakes, and across river headwaters, offering high-relief views from the Parrish Terminal Moraine and diverse wetlands in the Bogus Swamp State Natural Area.

PARRISH HILLS SEGMENT

(12 miles)

This remote segment skirts along the shoulder of Baldy Hill, a scenic ridge, and fords the Prairie River before winding through wetlands and evergreen forest.



EATS & TREATS

Be greeted like a regular and enjoy a home-cooked breakfast, lunch or dinner at **Dixie Lunch** - a staple of downtown Antigo for 75 years. Try the cookies from **Antigo Bakery**, the flax seed bread from **Gunkel's Bakery**, or any other baked-from-scratch goodies offered at these family-owned bakeries. Order burgers, sandwiches, or the fish fry and a refreshing brew at **Fifth Avenue Restaurant and Lounge**. Satisfy your pizza craving at **BB Jacks**. Enjoy Mexican cuisine at **El Tequila** or **La Mexicana**. Stick with classic American fare with a hot dog at **Banquet on a Bun**. Keep it healthy with grab-and-go choices at **Buckalow's Eatery**, **The Green Hen Natural Living Market** or **The Luncheonette**.

SHOPS & STOPS

From the latest in women's fashion, to candles, gourmet wines, foods, and home décor, **Schroeder's Gifts** has all you need and more to find the perfect gift. Take the flavors of the Northwoods home with you with wine, mead, maple syrup, and more at **Wild Epitome, LLC**. Pet supplies and home & garden supplies can be found at **Antigo Country Store**. Get your sporting goods, equipment, and gear at **Dunam's Sports**. Antigo houses one of the plants of world-class, award-winning cheesemaker, **Sartori Cheese**. Make sure to pick up a few samples at any of the grocery stores or gas stations town!

RECREATION & RELAXATION

Learn about all things Antigo and Langlade County at the **Langlade County Historical Society Museum & Welcome Center**. Plan to spend some time on the water at any of Langlade County's **841 lakes**, and **225 streams**. Kayak or canoe and take in the serene nature of the **wilderness lakes**, or test wits with fish at one of the widely renowned **trout streams**. Take a stroll through the downtown Antigo of yesteryear at **Yesterday Sign Park**. During hot summer days, cool down in the splash garden or indoor pools at **Clara R. McKenna Aquatic Center**. Spend a summer evening jamming out to free live music at Music in the Park, held at the beautiful **City Park West**.

For more ideas about Antigo and Langlade County, visit langladecounty.org.

STAY & PLAY

Whether planning a weekend stay or a week vacation in the Northwoods, Antigo and Langlade County want to make your Northern Wisconsin Vacation one to remember.

Keep it cozy at one of these indoor options:

- **Holiday Inn Express**
- **Sleep Inn**
- **Super 8**
- **Superior Stays**

Or, enjoy your time in the outdoors to the fullest with one of these camping options:

- **Antigo Lake RV Park and Campground**
- **Jack Lake Campground**

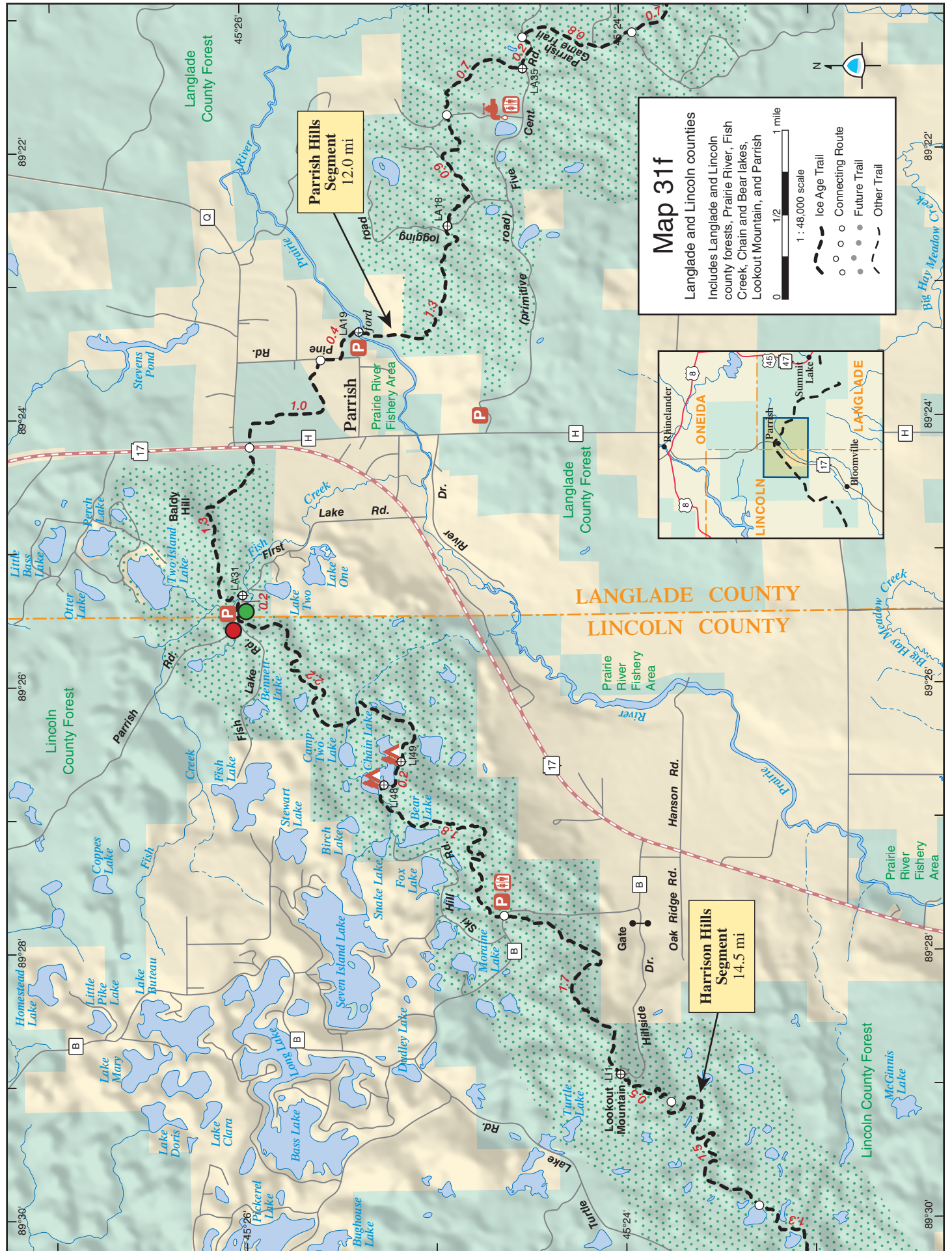


GET INVOLVED

Contact the **Langlade County Chapter of the Ice Age Trail Alliance**, a dedicated group of volunteers who build, maintain, and promote the beautiful segments of the Ice Age Trail throughout Langlade County.

Connect with the Chapter from their webpage: iceagetrail.org/volunteer/chapters/langlade-county





Map 33f

Langlade County

Includes Langlade County Forest, Greater Bass, Deep Wood, Sucker, Saddlebag, and Partridge lakes, and Summit Lake

1 : 48,000 scale
 0 1/2 1 mile

- Ice Age Trail
- Connecting Route
- Future Trail
- Other Trail

Summit Moraine Segment
12.2 mi

Highland Lakes Segment
12.8 mi

