



ANVIL[®]

INTERNATIONAL

ANVIL SHIELDS

SHIELD SYSTEM FOR INSULATED PIPING



ANVIL[®]
INTERNATIONAL
Building Connections That Last



ANVIL SHIELD FIG. 20
SHOWN IN ROOFTOP H-BLOCK APPLICATION

BUILDING CONNECTIONS THAT LAST





ANVIL UNIVERSAL SHIELD OVERVIEW **04**

SHIELDS, ADAPTERS, AND STABILISATORS **05**

ANVIL STRUT SHIELD, AND INSULATION COVER **07**

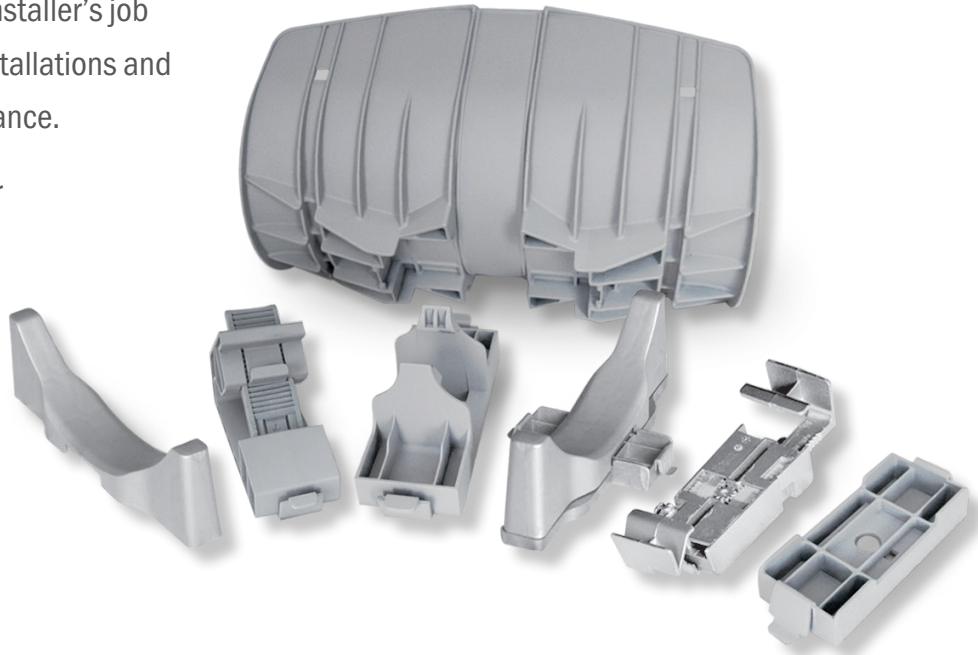
ANVIL BRANDS **08**

CUSTOMER SERVICE CENTERS **10**

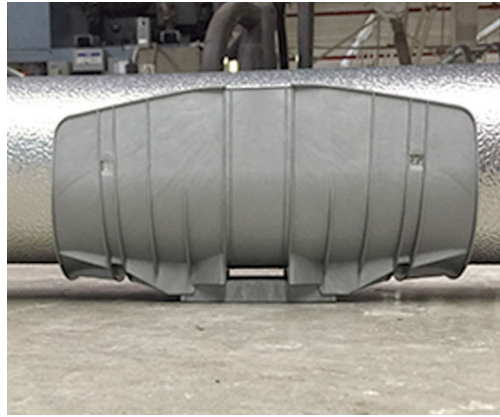
Anvil Universal Shield and components – adapt to your needs

The Anvil Shield solution is adaptable to different types of hanger and structural installation conditions. The shields adapt to work in clevis hanger, strut, steel angle, I-beam or floor mount applications. The adaptors quickly connect to the shield to make it functional for the specific installation requirement, eliminating any an issue of compatibility. Anvil Shields makes the installer's job easier while standardizing piping installations and improving performance and appearance.

Whether you have a retrofit, repair or new construction project, Anvil Shields is a fast installation with no tools required.



- **FEWER SKU'S REQUIRED IN INVENTORY**
Simply change out adapters for multiple uses of one part
- **TOOL-FREE INSTALLATION**
One click is all it takes
- **FASTEST INSTALLATION IN THE INDUSTRY**
40% faster than metal shields and 80% faster than clamps and collars
- **MAINTAINS PIPE INSULATION PROPERTIES**
permanent solution to displacement of pipe support
- **KEEPS THERMAL BRIDGE INTACT**
Prevents insulation damage and compression
- **MAINTAINS LIQUID LINE IN PLACE**
Minimizes refrigerant leaks



ANVIL UNIVERSAL SHIELD, CLEVIS ADAPTER, STRUT ADAPTER, STRUT STABILISATOR, I-BEAM ADAPTER, AND FLOOR ADAPTER



FIG. 30

UNIVERSAL SHIELD



SIZE RANGE: UP TO 12 5/8" O.D. INSULATION

- UV Resistant Polypropylene 20% Glass Filled
- Operating temperature between -40°F to 178°F (-40°C to 81°C)
- Gray
- Support of insulated horizontal refrigeration, air conditioning, and plumbing pipe
- Install on Fig. 260 clevis hanger or clip into Fig. 32, 33, 34, 36, or 37. When installed with Fig. 260 clevis hanger secure with Fig.



FIG. 31

UNIVERSAL SHIELD CLEVIS ADAPTER



SIZE RANGE: FROM 2" - 12" CLEVIS (FIG. 260) WHEN USED WITH FIG. 30.

- UV Resistant Polypropylene Copolymer (Size F 20% Glass Filled)
- Operating temperature between -40°F to 178°F (-40°C to 81°C)
- Gray
- Support of insulated horizontal refrigeration, air conditioning, and plumbing pipe when used with Fig. 30
- After installation of Fig. 30 with Fig 260 clevis hanger, clip into the bottom of the Fig. 30 in order to secure the Fig. 26

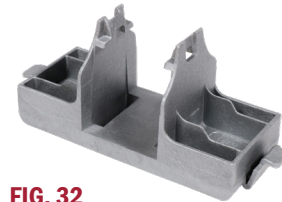


FIG. 32

UNIVERSAL SHIELD STRUT ADAPTER



SIZE RANGE: 1 5/8" X 1 5/8" AND 1 3/16" X 1 5/8" STRUT CHANNEL

- UV Resistant Polypropylene
- Operating temperature between -40°F to 178°F (-40°C to 81°C)
- Gray
- Support of insulated horizontal refrigeration, air conditioning, and plumbing pipe when used with Fig. 30
- Clip into the Fig. 30 and then clip directly on Anvil-Strut™
- AS200 1 5/8" x 1 5/8" and AS500 1 3/16" x 1 5/8" strut channel



ANVIL UNIVERSAL SHIELD, CLEVIS ADAPTER, STRUT ADAPTER, STRUT STABILISATOR, I-BEAM ADAPTER, AND FLOOR ADAPTER



FIG. 33
UNIVERSAL SHIELD ANGLE ADAPTER 

- SIZE RANGE:** 1/2" TO 2 5/8" STEEL ANGLE
- UV Resistant Polypropylene 20% Glass Filled
 - Operating temperature between -40°F to 178°F (-40°C to 81°C)
 - Gray
 - Support of insulated horizontal refrigeration, air conditioning, and plumbing pipe when used with Fig. 30
 - Clip into the Fig. 30 and then clip directly on steel angle or C-channel



FIG. 34
UNIVERSAL SHIELD STRUT STABILISATOR 

- SIZE RANGE:** FIG. 34 G FITS THE "G" SIZE UNIVERSAL SHIELD (FIG. 30 G) FIG. 34 H FITS THE "H" SIZE UNIVERSAL SHIELD (FIG. 30 H)
- UV Resistant Polypropylene 20% Glass Filled
 - Operating temperature between -40°F to 178°F (-40°C to 81°C)
 - Gray
 - Support of insulated horizontal refrigeration, air conditioning, and plumbing pipe when used with Fig. 30 & Fig. 31
 - Center under Fig. 30. Clip Fig. 31 over the Strut Stabilisator into the Fig 30 in order to secure it

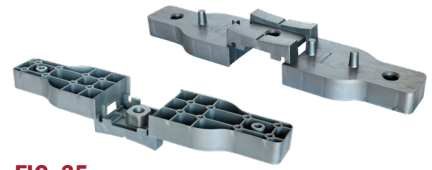


FIG. 35
UNIVERSAL SHIELD FLOOR ADAPTER 

- SIZE RANGE:** ONE SIZE FITS ALL
- UV Resistant Polypropylene 20% Glass Filled
 - Operating temperature between -40°F to 178°F (-40°C to 81°C)
 - Gray
 - Support of insulated horizontal refrigeration, air conditioning, and plumbing pipe when used with Fig. 30, Fig. 31, and Fig. 34
 - Center under Fig. 30 and Fig. 34. Clip Fig. 31 over the Floor Adapter into the Fig 30 in order to secure it



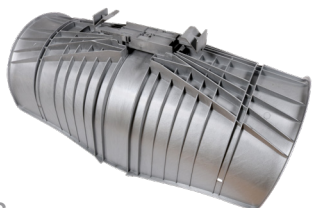
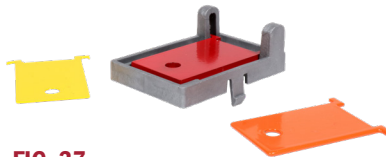
FIG. 36
UNIVERSAL SHIELD INSULATION COVER 

- SIZE RANGE:** 3.5" TO 8.87" BEAM FLANGE WIDTH
- UV Resistant Polypropylene 20% Glass Filled
 - Operating temperature between -40°F to 178°F (-40°C to 81°C)
 - Gray
 - Support of insulated horizontal refrigeration, air conditioning, and plumbing pipe when used with Fig. 30
 - Clip into the Fig 30 and then clip directly on an I-Beam.



FIG. 37
UNIVERSAL SHIELD SHOCK DETECTOR 

- SIZE RANGE:** FITS ANVIL FIG. 31 UNIVERSAL SHIELD CLEVIS ADAPTER
- UV Resistant Polypropylene 20% Glass Filled. (Carbon Steel Flags)
 - Operating temperature between -40°F to 178°F (-40°C to 81°C)
 - Gray
 - Magnetic shock detection device provides a visual indication that the piping system has experienced accelerations of various magnitudes.
 - Clip body into the Fig. 31. Choose the specified flag color and insert into the Fig. 37 Body. The flag should then be held in place by the magnet.



Anvil Strut Shield is ideal to protect insulated pipes

Anvil Strut Shield is designed to allow for pipe movement due to expansion within the support, eliminating common problems that occur with traditional pipe saddles such as; rotation, displacement, and thermal insulation damage.

Anvil Strut Shield is designed to accommodate movement of the pipe within the hanger generated by thermal expansion and vibration. With its unique sliding design at each end, Anvil Strut Shield easily and effectively cradles and protects pipe and insulation allowing them to expand and vibrate without damaging the insulation.



- TOOL-FREE INSTALLATION – One click is all it takes
- FASTEST INSTALLATION IN THE INDUSTRY –60% faster than metal shields and 80% faster than clamps and collars
- MAINTAINS PIPE INSULATION PROPERTIES – permanent solution to displacement of pipe support
- KEEPS THERMAL BRIDGE INTACT – Prevents insulation damage and compression
- MAINTAINS LIQUID LINE IN PLACE –Minimizes refrigerant leaks



FIG. 38
UNIVERSAL SHIELD
INSULATION COVER



SIZE RANGE: UP TO 12 5/8" O.D. INSULATION

- UV Resistant Polypropylene 20% Glass Filled
- Operating temperature between -40°F to 178°F (-40°C to 81°C)
- Gray
- Cut to desired size. Place over insulation and line up mounting notches with Fig. 30
- Secure insulation shield with tie wraps



FIG. 20
STRUT SHIELD



SIZE RANGE: UP TO 8 1/4" O.D. INSULATION

- UV Resistant Polypropylene Copolymer (Size F 20% Glass Filled)
- Operating temperature between -40°F to 178°F (-40°C to 81°C)
- Black or White
- Support of insulated horizontal refrigeration, air conditioning, and plumbing pipe.
- Clip directly on Anvil-Strut™ AS200 15/8" x 15/8" strut channel



FIG. 21
STRUT SHIELD
INSULATION COVER



SIZE RANGE: UP TO 8 1/4" O.D. INSULATION

- UV Resistant Polypropylene
- Operating temperature between -40°F to 178°F (-40°C to 81°C)
- Black or White
- Cut to desired size. Place over insulation and line up mounting notches with Fig. 20. Secure insulation shield with tie wraps.
- Can also be used with Fig. 30 Universal Shield



Anvil product lines include malleable and cast iron fittings, unions and flanges; seamless and welded steel pipe nipples; steel pipe couplings; universal anvilets; forged steel fittings and unions; pipe hangers and supports; threaded rod; and engineered hangers



The SPF/Anvil product line includes a variety of internationally sourced products such as grooved couplings, fittings, cast iron, malleable iron and ductile iron threaded fittings, steel pipe nipples, as well as tee-lets.



The Merit product line includes a variety of tee-lets and drop nipples for fire protection applications. Most Merit products are UL/ ULC Listed, FM Approved, and rated from 175 to 300 psi.



Anvil-Strut products include a complete line of channel in stock lengths of 10 and 20 feet, with custom lengths available upon request. A variety of fittings and accessories are also offered. All products can be ordered in an assortment of finishes and material choices including SupR-Green™, Zinc Trivalent Chromium, pre-galvanized, hot-dipped galvanized, electro-galvanized, aluminum, plain, and stainless steel.



Anvil EPS-Engineered Pipe Supports are products used to support piping systems under thermal, seismic, and other dynamic loading conditions. The product line encompasses variable spring hangers, constant supports, sway struts and snubbers as well as standard and special design clamps. Anvil EPS brings the highest quality products and innovative engineering solutions to common and uncommon piping system problems.



Catawissa hammer unions are offered in threaded ends and butt weld ends, and are interchangeable with most leading union manufacturers. Fully traceable and available with complete mill certifications, Catawissa's oilfield hammer union product line includes the standard ball-and-cone design plus our unique Figure 300 Flat Face design, where space and pipe line separation are a consideration.



The Gruvlok product line consists of couplings for grooved and plain-end fittings, butterfly valves and check valves; flanges; pump protection components; pipe grooving tools; as well as copper and stainless steel system components.



The Afcon seismic bracing line includes UL listed and FM approved structural attachments for concrete, wood or steel structural members like bar joist or I-beams, swivel connections that accept from 1" to 2" schedule 40 pipe. Afcon's seismic system attachments are engineered for up to 12" IPS steel pipe, copper tubing or plastic pipe.

FLEXHEAD®

We invented the concept of Flexible Fire Protection™. FlexHead systems connect sprinkler heads to sub-mains at least four times faster than hard pipe. Delivers even greater savings in retrofits. All our flexible sprinkler pipe and connections are UL Listed and FM Approved.



JB Smith is the leading manufacturer of oil country tubular fittings, swages and bull plugs – all meeting API specifications. Offering tubing nipples, casing nipples as well as a full line of traditional line pipe and oil country threads in every schedule, JB Smith is the resource for all your oilfield needs.



Steel pipe nipples and steel pipe couplings are manufactured in accordance with the ASTM A733 Standard Specification for Welded and Seamless Carbon Steel and Stainless Steel Pipe Nipples. Steel pipe couplings are manufactured in accordance with the ASTM A865 Standard Specification for Threaded Couplings, Steel, Black or Zinc-Coated (Galvanized) Welded or Seamless, for Use in Steel Pipe Joints. API couplings are manufactured in accordance with the API Specification for line pipe.



Founded in 1983, NAP is a manufacturer of fabrication equipment, including automatic welders, plasma cut-off equipment, hole cutting equipment, make-on machines and pipe threaders. NAP, innovators of pipe fabrication equipment.

CUSTOMER SERVICE CENTERS

UNITED STATES

TEL: 800-301-2701

FAX: 708-534-5441

EMAIL: customerservice@anvilintl.com

CANADA

TEL: 800-661-8998

FAX: 519-426-5509

EMAIL: canadacs@anvilintl.com

LATIN AMERICA

TEL: +1-800-885-3000

FAX: +1-708-534-5441

EMAIL: latinoamerica@anvilintl.com

INTERNATIONAL

TEL: +31-53-572-5570

EMAIL: internationalsales@anvilintl.com

REGIONAL DISTRIBUTION CENTERS

UNITED STATES

ILLINOIS

7979 W. 183rd Street, Unit D
Tinley Park, IL 60484

TEXAS

1401 Valley View Lane, Suite 150
Irving, TX 75061

PENNSYLVANIA

800 Malleable Road
Columbia, PA 17512

CALIFORNIA

551 North Loop Drive
Ontario, CA 91761


FLORIDA

236 Outlook Point Drive, Suite 100
Orlando, FL 32809

CANADA

ONTARIO

390 Second Avenue, P.O. Box 40
Simcoe Ontario, Canada
N3Y 4K9

- 
- ★ Corporate Headquarters
 - 📍 Plants
 - 📍 Regional Distribution Centers

📍 Ontario, CA



ANVIL MAINTAINS CONTRACTS WITH A CORE FLEET OF CARRIERS TO PROVIDE EFFICIENTLY CONSISTENT DELIVERY SERVICES TO OUR CLIENTS.





www.anvilintl.com

