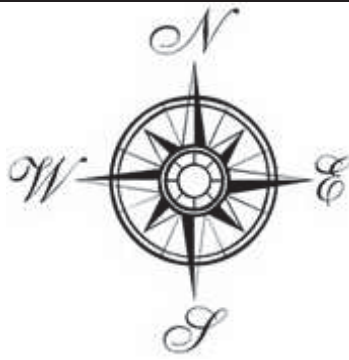


Appendix A—Topographic Maps



This report includes information from the following map sheet(s).



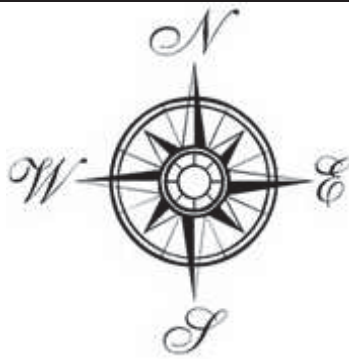
August 2017

Titan Environmental
Services, Inc.
P.O. Box 410295
Kansas City, MO 64141

Subject Site Topographic Map Figure 1-2015

Subject Site and
Surrounding Area

409 E. Armour Blvd.
Kansas City, MO 64109



This report includes information from the following map sheet(s).



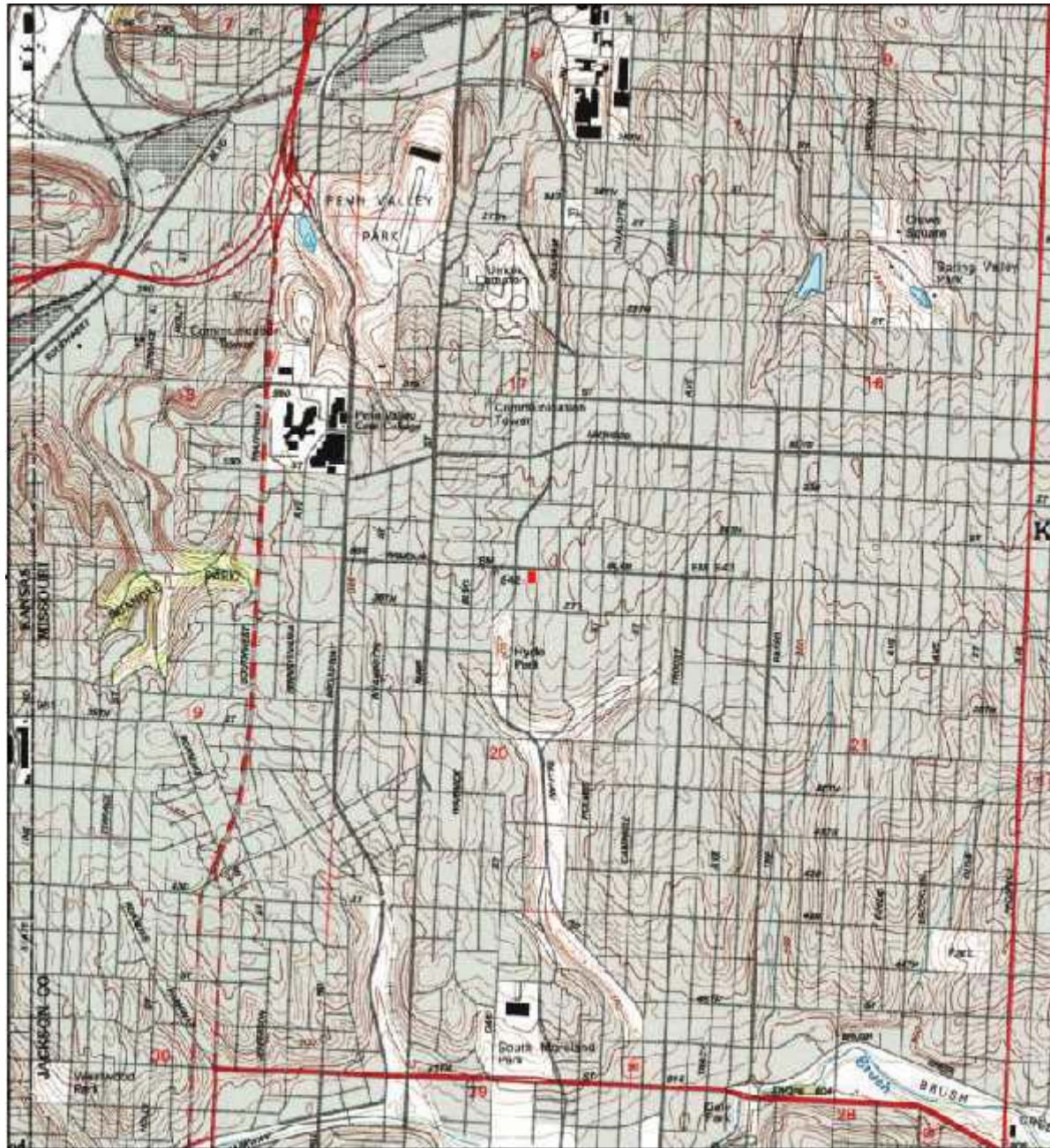
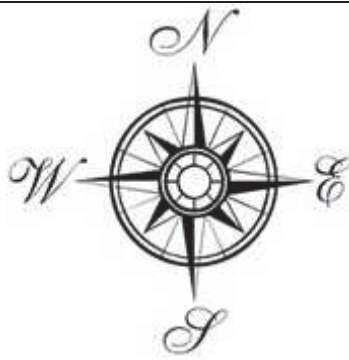
August 2017

Titan Environmental
Services, Inc.
P.O. Box 410295
Kansas City, MO 64141

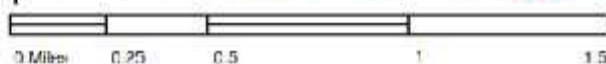
Subject Site Topographic Map Figure 2-1996

Subject Site and
Surrounding Area

409 E. Armour Blvd.
Kansas City, MO 64109



This report includes information from the following map sheet(s).

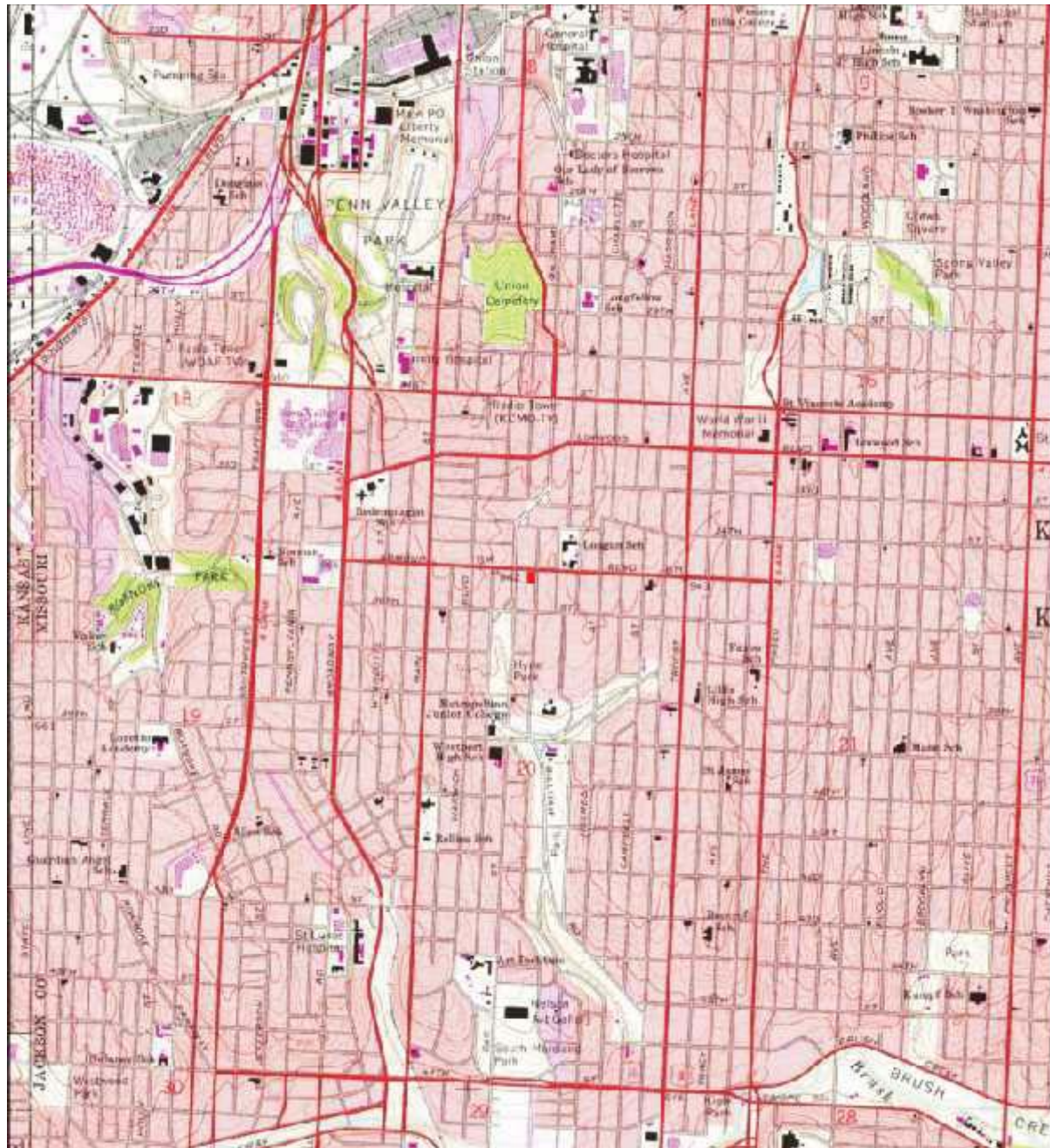
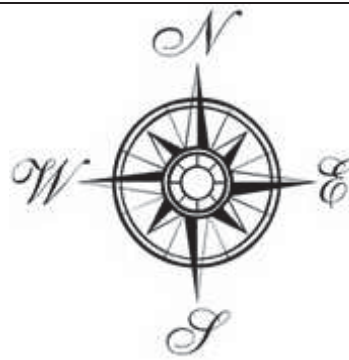


August 2017

Titan Environmental
Services, Inc.
P.O. Box 410295
Kansas City, MO 64141

Subject Site Topographic Map Figure 3-1995

Subject Site and
Surrounding Area
409 E. Armour Blvd.
Kansas City, MO 64109



This report includes information from the following map sheet(s).



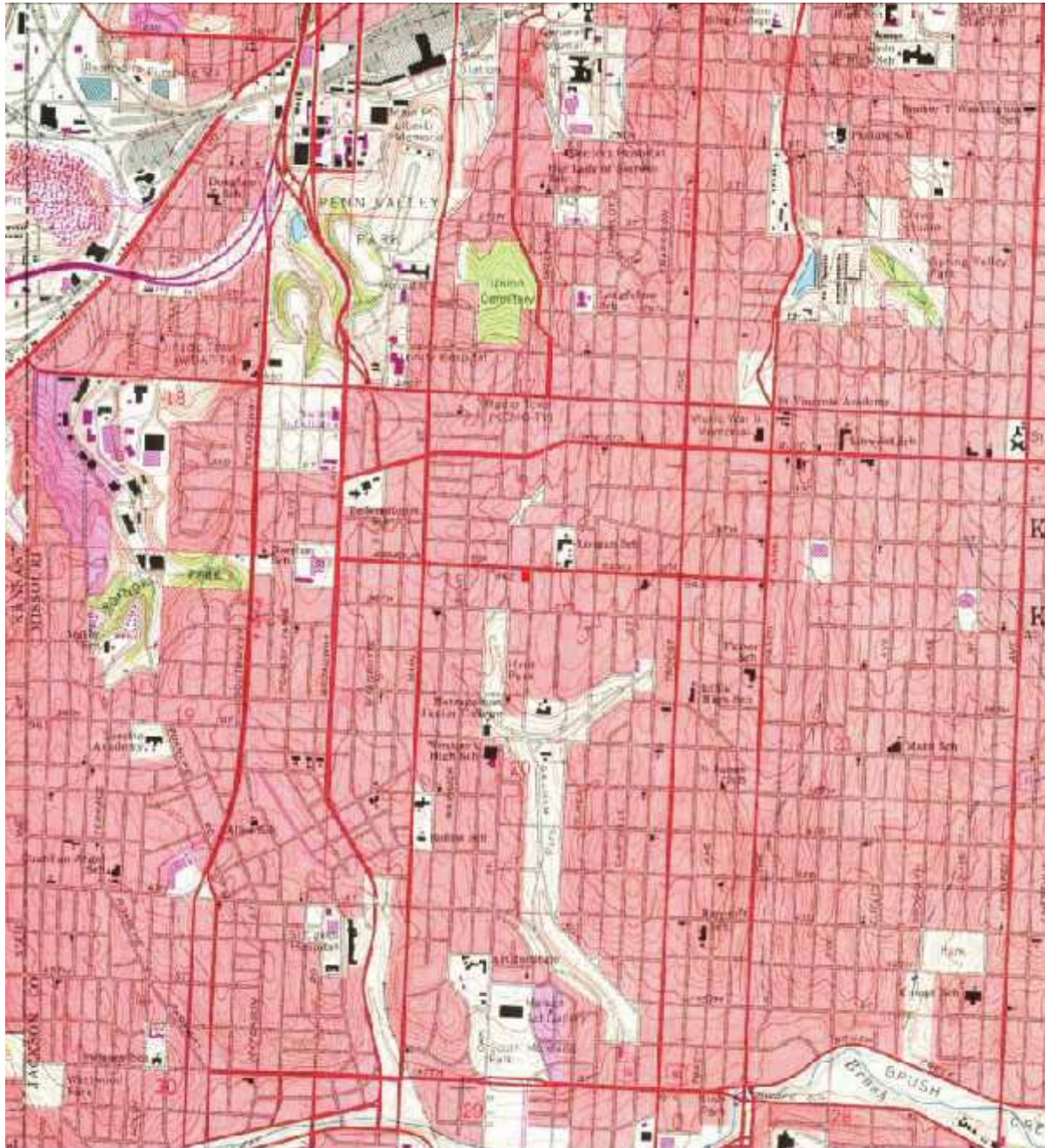
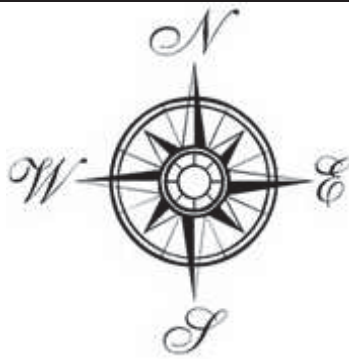
August 2017

Titan Environmental
Services, Inc.
P.O. Box 410295
Kansas City, MO 64141

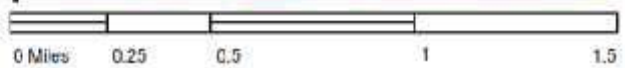
Subject Site Topographic Map Figure 4-1975

Subject Site and
Surrounding Area

409 E. Armour Blvd.
Kansas City, MO 64109



This report includes information from the following map sheet(s).



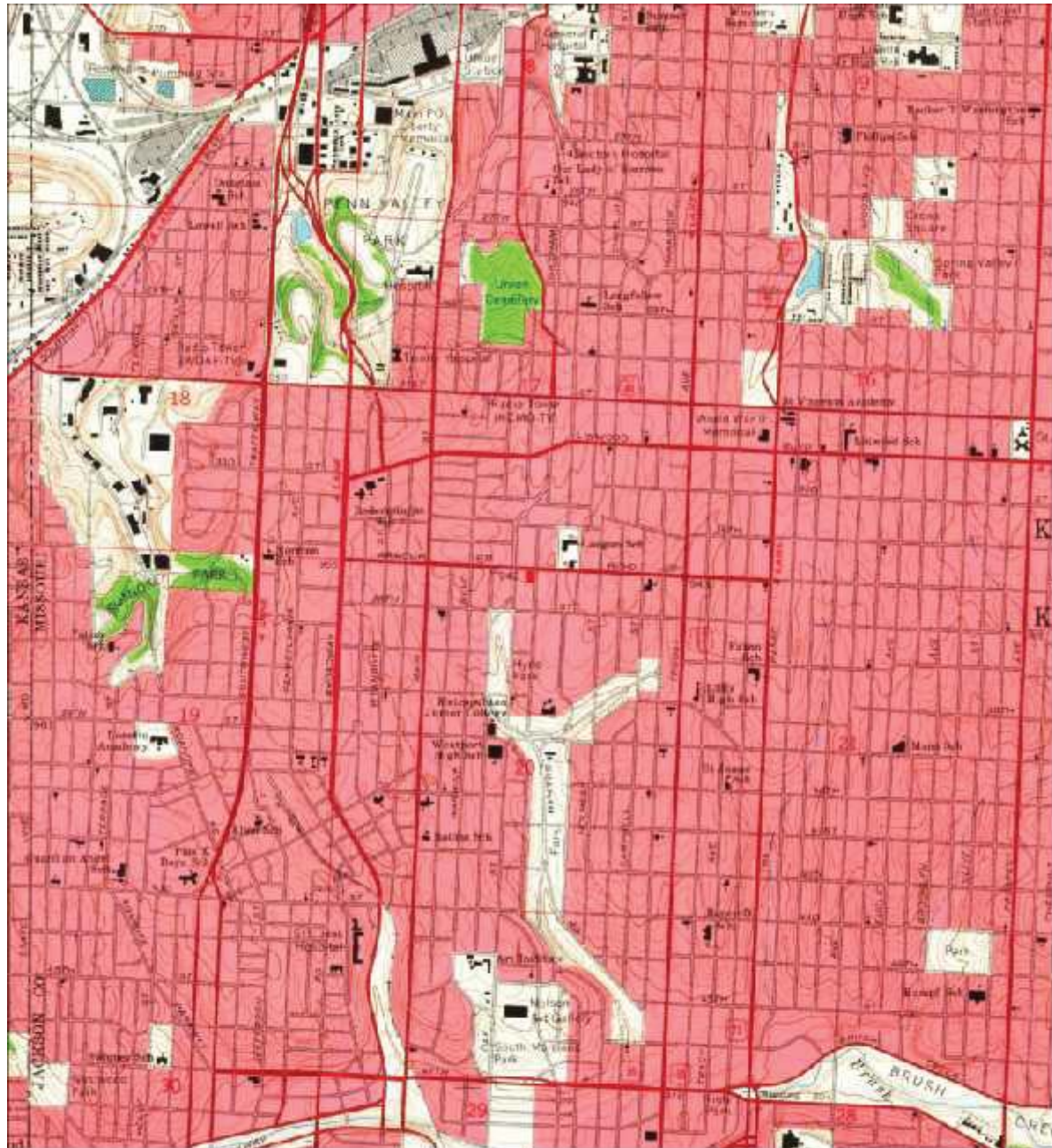
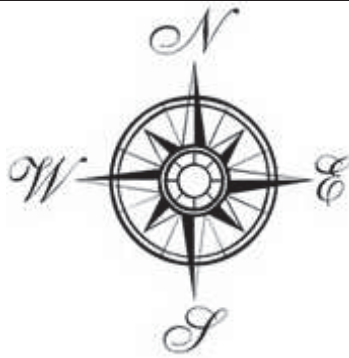
August 2017

Titan Environmental
Services, Inc.
P.O. Box 410295
Kansas City, MO 64141

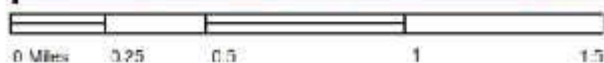
**Subject Site
Topographic Map
Figure 5-1970**

Subject Site and
Surrounding Area

409 E. Armour Blvd.
Kansas City, MO 64109



This report includes information from the following map sheet(s)



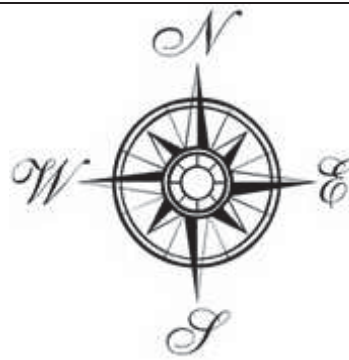
August 2017

Titan Environmental
Services, Inc.
P.O. Box 410295
Kansas City, MO 64141

Subject Site Topographic Map Figure 6-1964

Subject Site and
Surrounding Area

409 E. Armour Blvd.
Kansas City, MO 64109



This report includes information from the following map sheet(s)



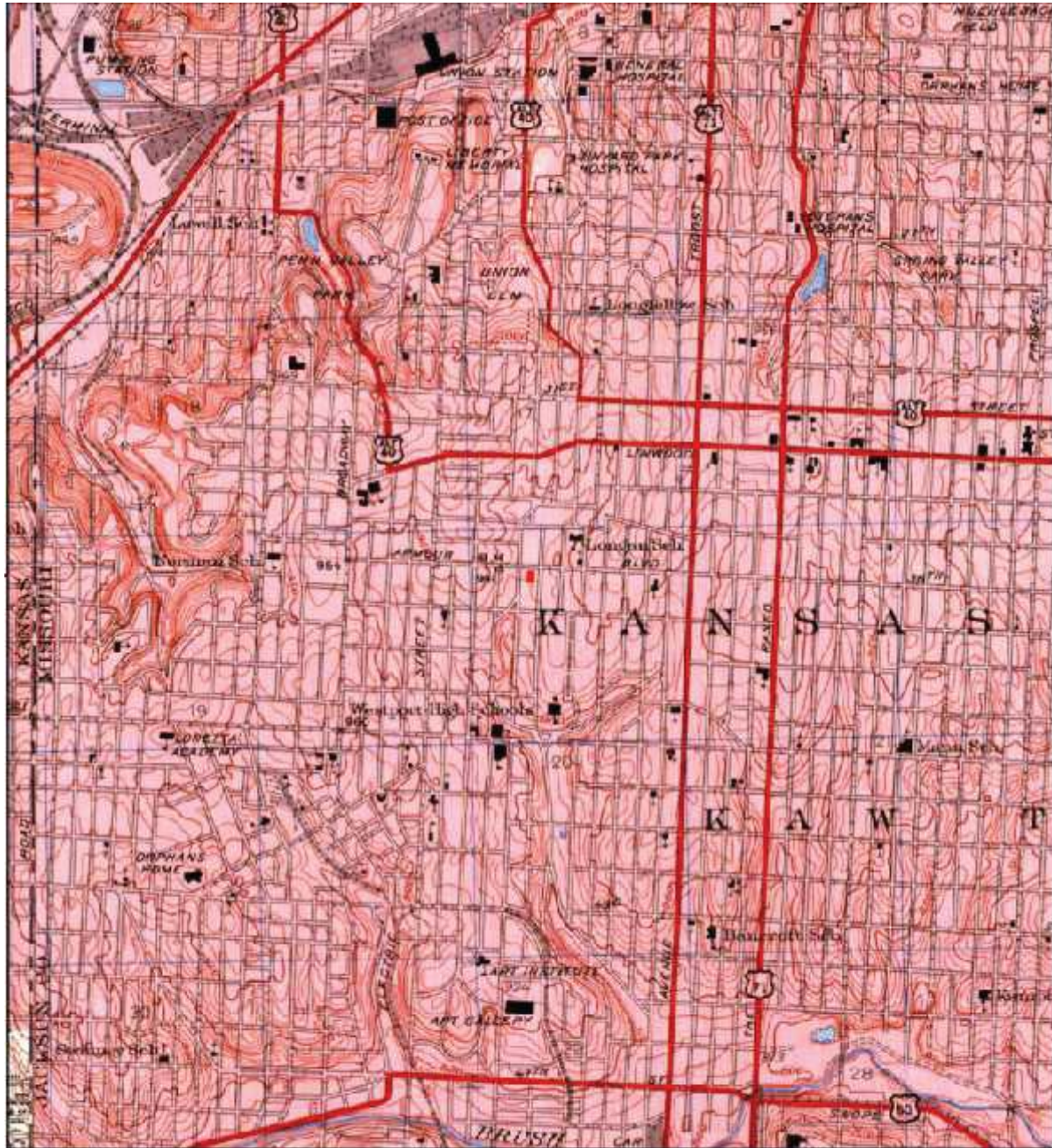
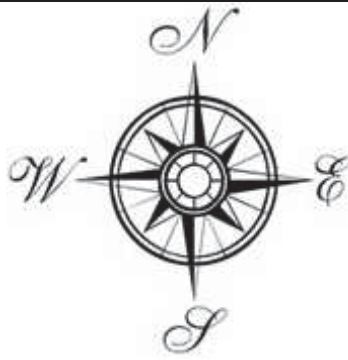
August 2017

Titan Environmental
Services, Inc.
P.O. Box 410295
Kansas City, MO 64141

Subject Site Topographic Map Figure 7-1957

Subject Site and
Surrounding Area

409 E. Armour Blvd.
Kansas City, MO 64109



This report includes information from the following map sheet(s).



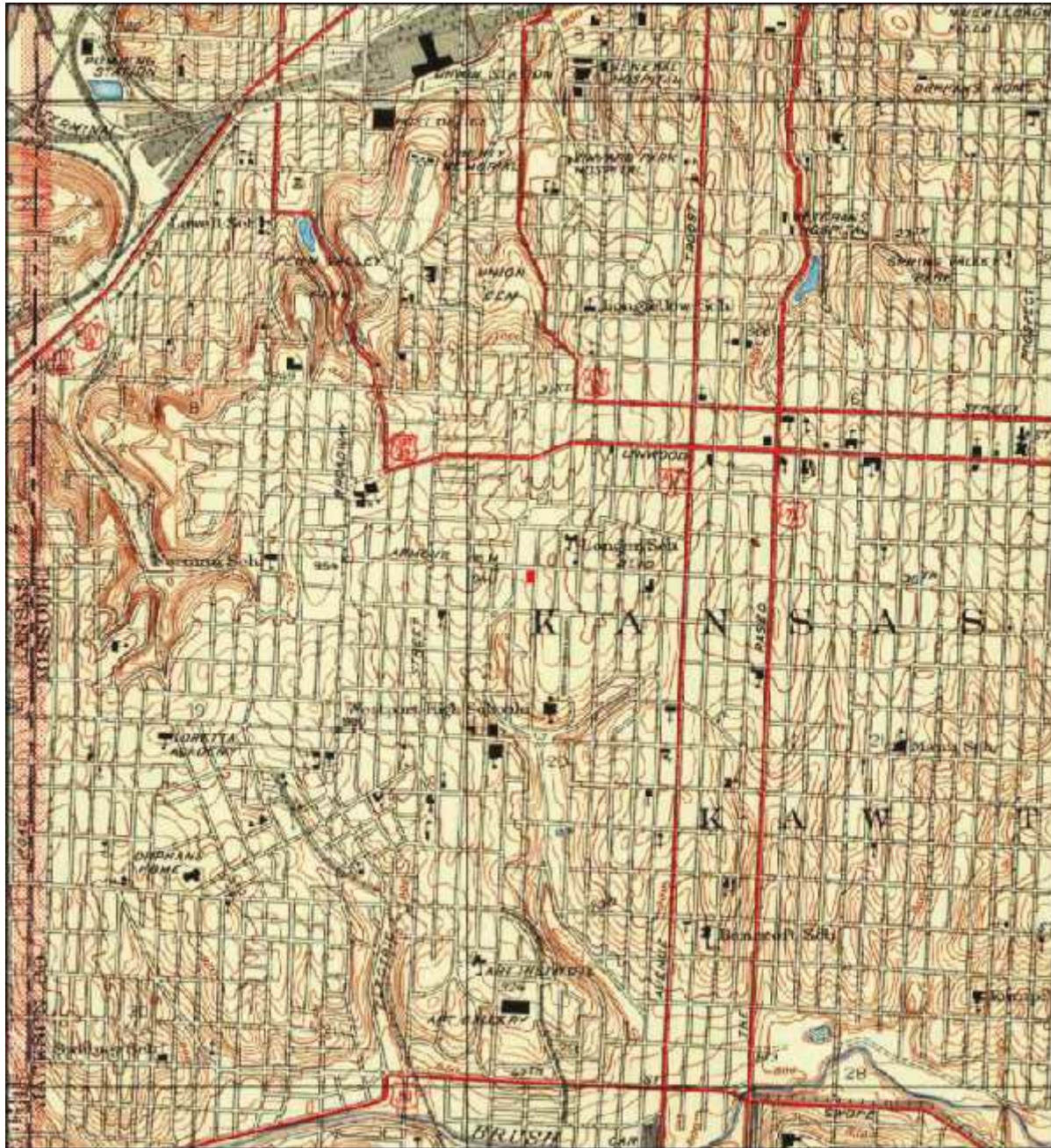
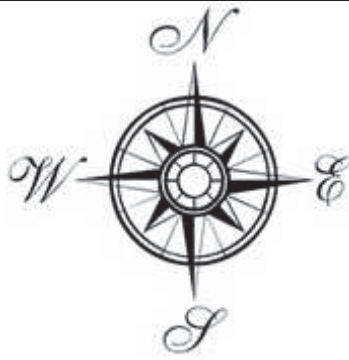
August 2017

Titan Environmental
Services, Inc.
P.O. Box 410295
Kansas City, MO 64141

Subject Site Topographic Map Figure 8-1948

Subject Site and
Surrounding Area

409 E. Armour Blvd.
Kansas City, MO 64109



This report includes information from the following map sheet(s)



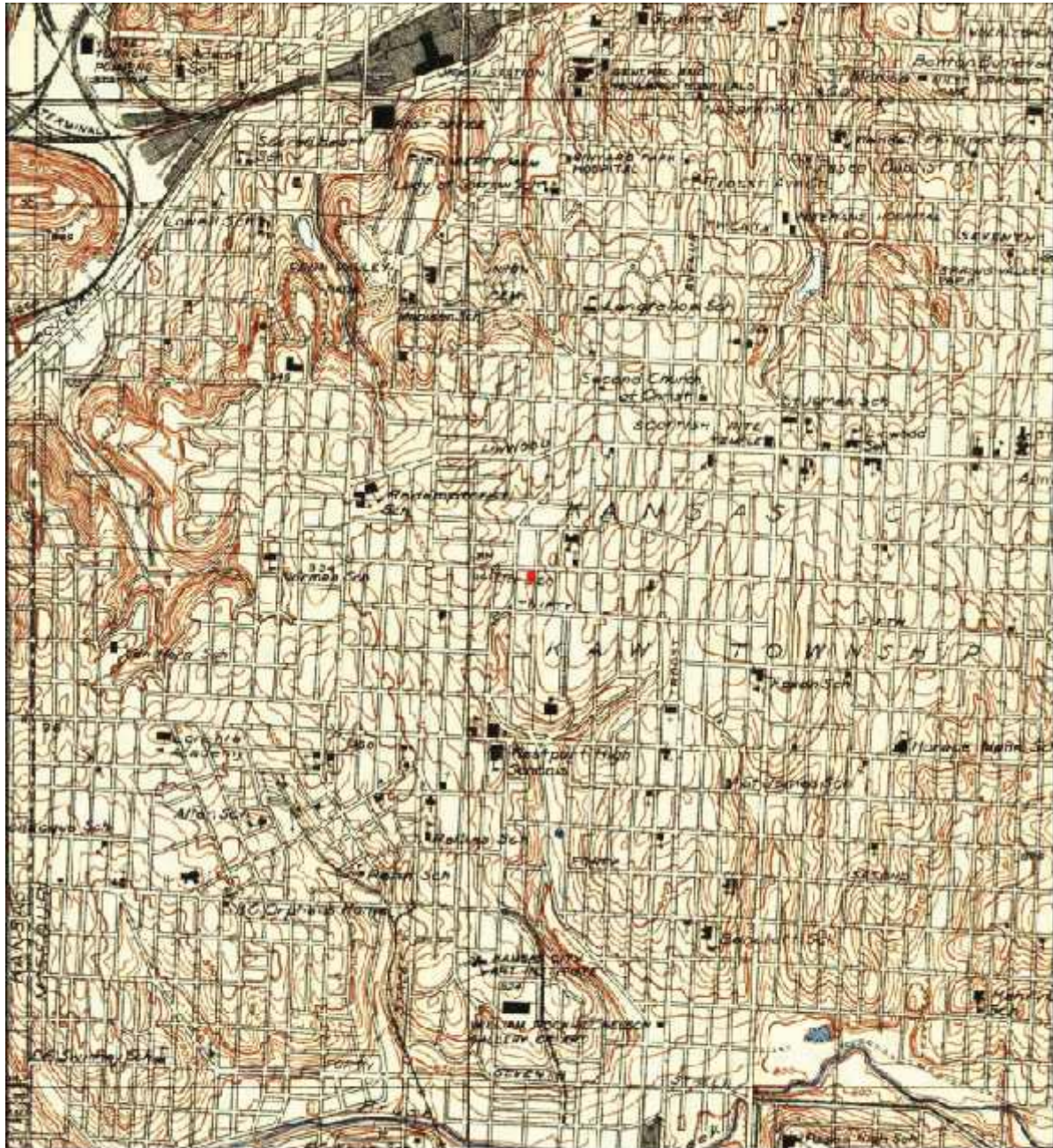
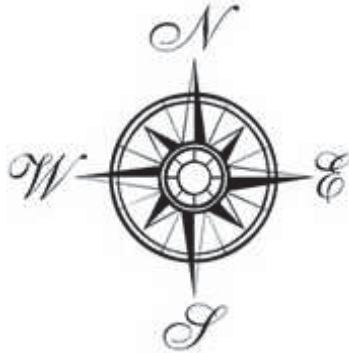
August 2017

Titan Environmental
Services, Inc.
P.O. Box 410295
Kansas City, MO 64141

**Subject Site
Topographic Map
Figure 9-1940**

Subject Site and
Surrounding Area

409 E. Armour Blvd.
Kansas City, MO 64109



This report includes information from the following map sheet(s)



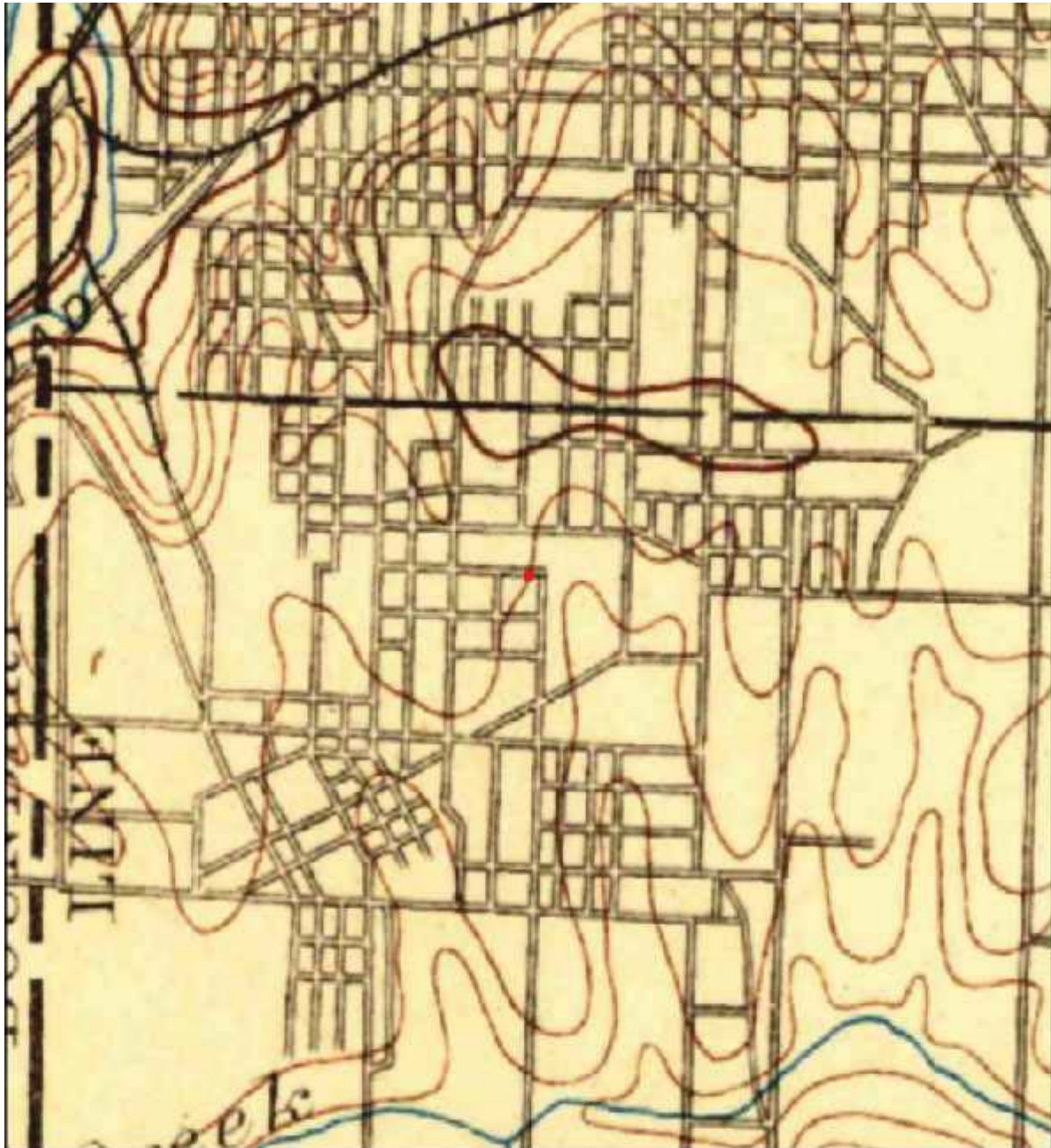
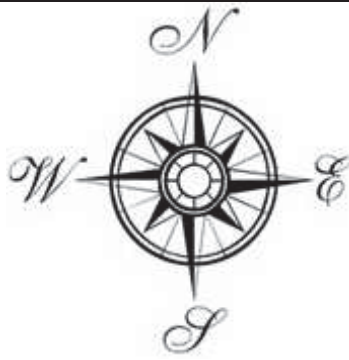
August 2017

Titan Environmental
Services, Inc.
P.O. Box 410295
Kansas City, MO 64141

Subject Site Topographic Map Figure 10-1935

Subject Site and
Surrounding Area

409 E. Armour Blvd.
Kansas City, MO 64109



This report includes information from the following map sheet(s)



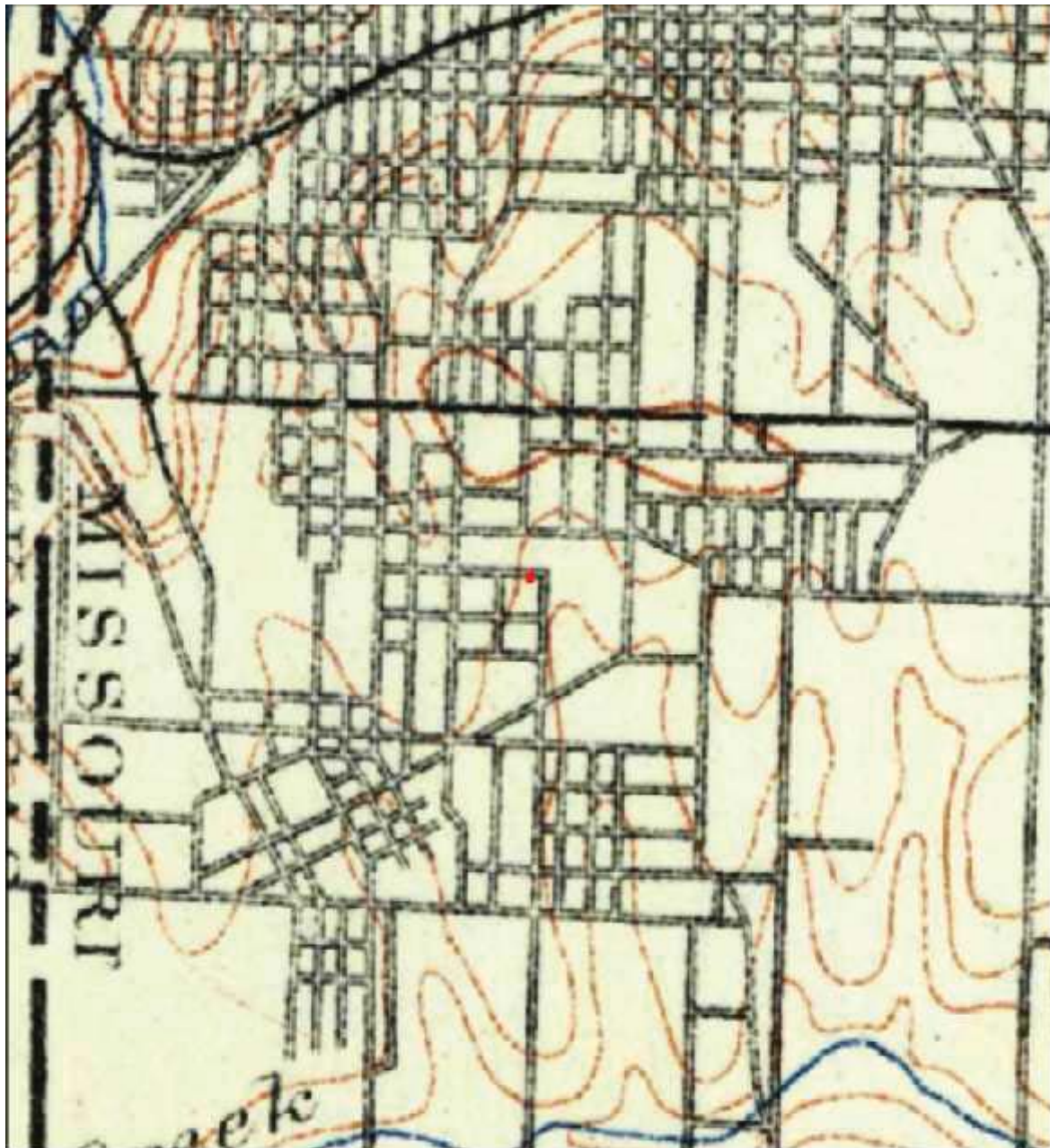
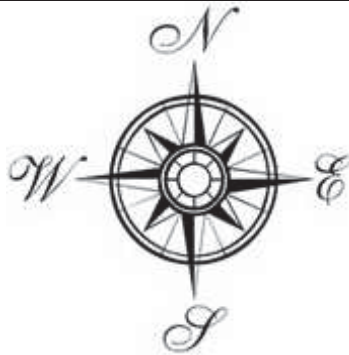
August 2017

Titan Environmental
Services, Inc.
P.O. Box 410295
Kansas City, MO 64141

**Subject Site
Topographic Map
Figure 11-1894**

**Subject Site and
Surrounding Area**

409 E. Armour Blvd.
Kansas City, MO 64109



This report includes information from the following map sheet(s).



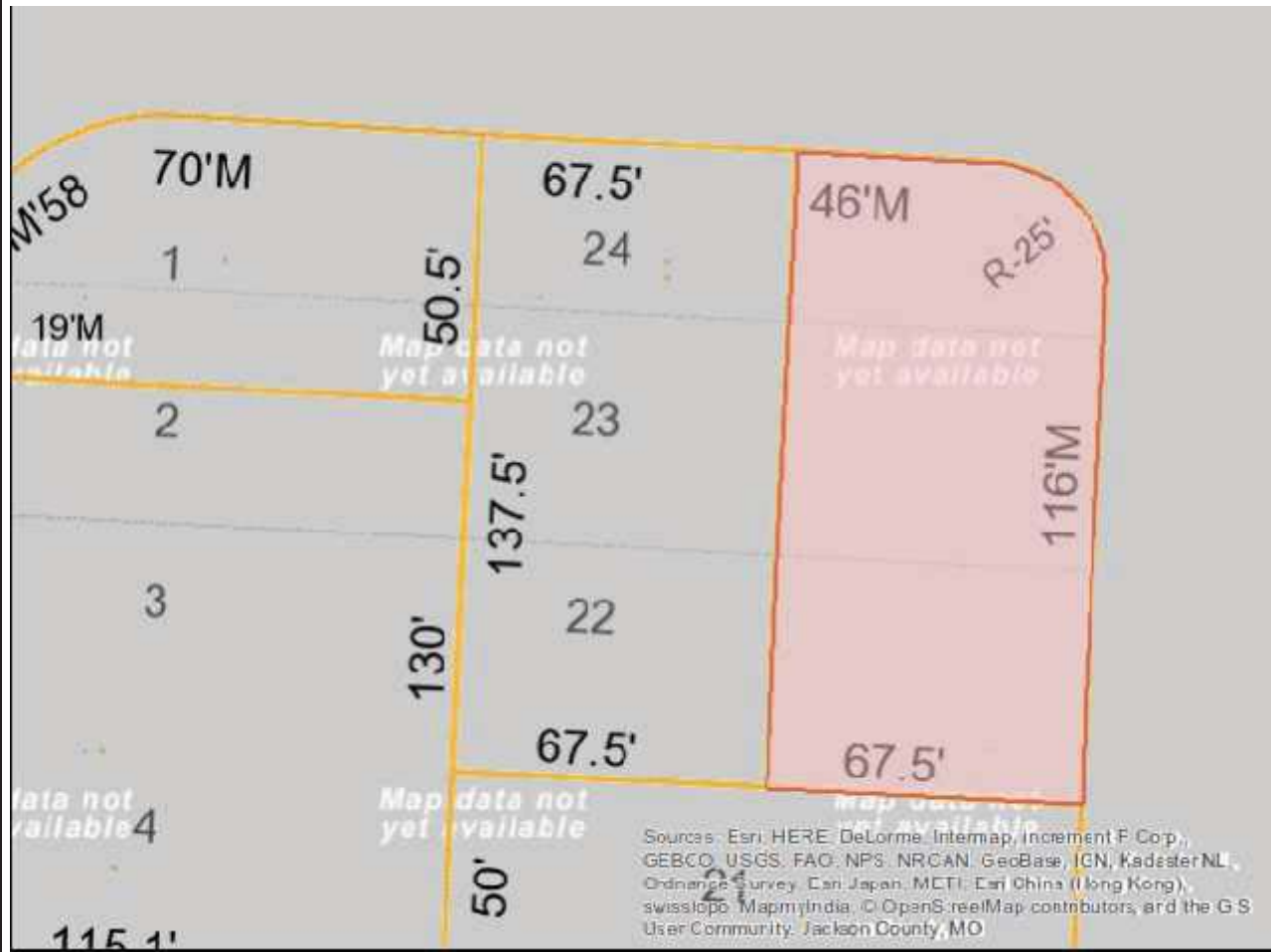
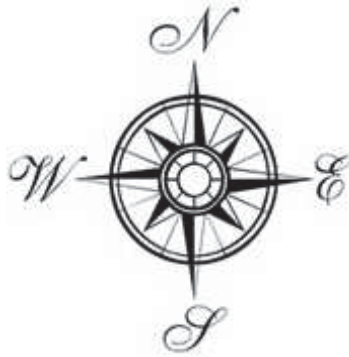
August 2017

Titan Environmental
Services, Inc.
P.O. Box 410295
Kansas City, MO 64141

**Subject Site
Topographic Map
Figure 12-1890**

**Subject Site and
Surrounding Area**

409 E. Armour Blvd.
Kansas City, MO 64109



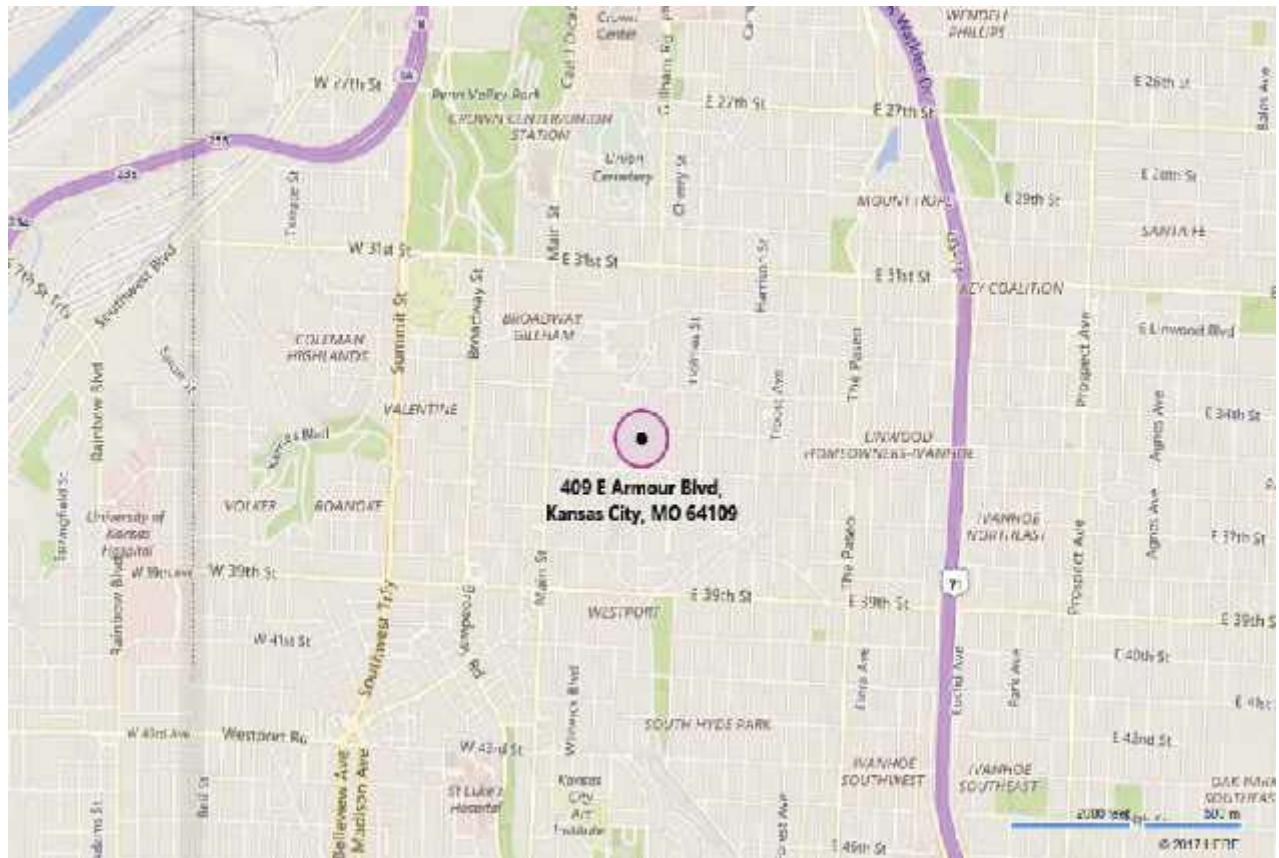
August 2017

Titan Environmental
Services, Inc.
P.O. Box 410295
Kansas City, MO 64141

**Subject Site
Topographic Map
Figure 13-Parcel Map**

**Subject Site and
Surrounding Area**

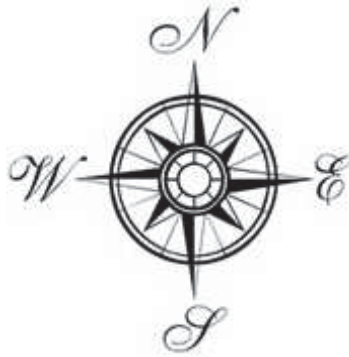
409 E. Armour Blvd.
Kansas City, MO 64109



**Titan Environmental
Services, Inc.
P.O. Box 410295
Kansas City, MO 64141**

**Subject Site and
Surrounding Area**

**409 E. Armour Blvd.
Kansas City, MO 64109**



Google Earth

feet
meters

100 500



August 2017

**Titan Environmental
Services, Inc.
P.O. Box 410295
Kansas City, MO 64141**

**Subject Site
Topographic Map
Figure 15-Aerial Site Map**

**Subject Site and
Surrounding Area**

**409 E. Armour Blvd.
Kansas City, MO 64109**

Appendix B – Site Photographs & Drawings



Front (north) Entrance Overview



Locust St., Facing North



The Sombart Apartments Overview



International/Catholic Charities Bldg., W. of Gillham Rd.



Georgian Court Apartments, N. of E. Armour Blvd.



Park Central & Bellerive Apts., NW Gillham Rd.



Main Lobby Overview 1



N. Stairwell to 2nd Floor



Hall to Nurses' Station



Nurses' Station Overview 1



Main Lobby Overview 2



Nurses' Station Overview 2



Nurses' Station Kitchenette



Blood Draw Lab Overview 1



Typical Physician's Office



Physician's Office Closet & Restroom



Typical 1st Floor Hallway



Typical Unit (shared) Restroom



Typical Unit Living Room/Bedroom



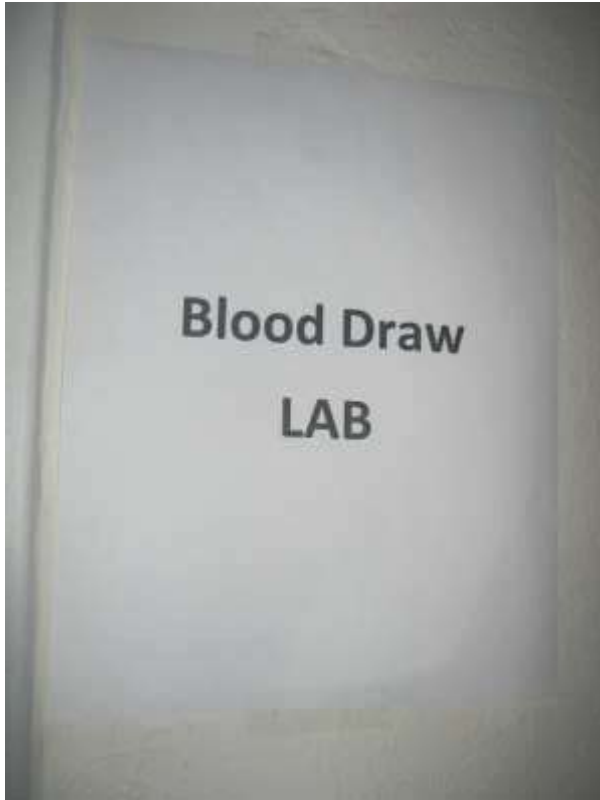
Typical (shared) Kitchen Overview



Typical Unit Closet



Typical Unit (textured) Ceiling



Blood Draw Lab Overview 2



Typical Unit Flooring Under Carpet (moisture/water stains visible)



Typical Unit Intercom



Light Ballasts & Fluorescent Bulbs, 1st Floor Hallway



Canteen Retail Store (1st Floor) Kitchen Overview



Canteen Retail Store Lobby Area



Canteen Retail Store Restroom Floor



Canteen Retail Store Restroom Ceiling



Typical Building Fire Sprinkler



South Stairwell Overview 1



1st Floor Laundry Room Overview 1



1st Floor Laundry Room Overview 2



2nd Floor Unit Bathroom Overview



Water Stained Ceiling, 2nd Floor Unit



2nd Floor Unit Sheet Vinyl Floor Covering



2nd Floor Unit Closet



Water Stained Wall near Floor, 2nd Floor Unit 1



Water Stained Wall near Floor, 2nd Floor Unit 2



Water Stains on Ceiling & Vent Register, 2nd Floor Unit



Typical Unit HVAC Closet



South Stairwell, Exit to Ground Floor Overview



Basement Overview, Facing North



Typical Basement Ceiling



55-Gallon PVC Antifreeze Storage Drums (empty)



Basement Utility Room Overview 1



Fire Suppression System, Basement Utility Room



Hot Water Heaters & Furnace, Basement



Typical Basement Floor Drain



Basement Fire Door Label



Basement Electrical Breaker Panels



Basement Chemical Storage Room Overview 1



Basement Chemical Storage Room Overview 2



Paints & Adhesives, Basement Chemical Storage Room



Top Shelf Contents of Fire Cabinet



Middle Shelf Contents of Fire Cabinet



Bottom Shelf Contents of Fire Cabinet



Fire Cabinet Overview, Basement Chemical Storage Room



Flooring Adhesive Labels, Basement Chemical Storage Room



NW Basement Overview 1



Basement Overview, Facing South



SE Basement Overview



SE Basement Water Gauge



Water Gauge Closeup



Bldg. Phone Lines, Basement



NW Basement Overview 2



NW Basement Overview 3



Hot & Cold Water Line Penetrations, Basement



Sheetrock & Concrete Mixes, NW Basement Area



Light Ballast, NW Basement Area



Misc. Household Debris, NW Basement 1



Misc. Household Debris, NW Basement



Fluorescent Light Bulbs, NW Basement



Filters, NW Basement Area



Light Ballasts, NW Basement Area



Light Ballast Label, NW Basement



Visible Mold on Wall, NW Basement 1



Sump Pump Area, NW Basement



Visible Mold on Wall, NW Basement 2



West Basement Exit to Ground Floor



Center Chimney/Crawl Space, Basement



Empty 55-Gallon Drum Label



TVs & Computer Monitors, Central Basement



Sump Pump, East Loading Dock Area, Basement



Flooring Materials, S. Entrance to Hallway



Typical 1st & 2nd Floor Hallways



Typical Hallway Fire Alarm System



2nd Floor Hallway Emergency Lighting & Fire Alarm



Flooring Materials, 2nd Floor Game Room



Water Damage in 2nd Floor Game Room



Ceiling Above Central Column, 2nd Floor Game Room



2nd Floor Game Room HVAC Closet



2nd Floor Game Room Overview



Water Stains Above Central Column, 2nd Fl. Game Room



Unit 205 Entrance



Unit 205 Shared Bathroom



Unit 205 Closet



Unit 205 Living Room/Bedroom



Cracked Plaster Walls, Unit 205 Living Room/Bedroom



Typical Interior Window System



Typical Hallway Fire Extinguisher



2nd Floor Hallway Closet Overview



Typical Hallway Ceiling



Typical Hallway Fire Door



Typical Hallway Fire Door Placards



2nd Floor North Stairwell



Unit 201 Entrance



Unit 201 Main Hallway



Unit 201 Closet



Unit 201 Living Room/Bedroom Overview 1



Unit 201 Living Room/Bedroom Overview 2



Unit 201 Kitchen Overview



Unit 203 Living Room/Bedroom Overview 1



Unit 203 Main Hallway



Unit 203 Living Room/Bedroom Overview 2





Water Stains, Unit 203 Main Hallway



Water Stains, Unit 203 Bathroom Floor



Water Stained Door Header, Unit 203 Bathroom



Emergency Lighting/Fluorescent Bulbs, 2nd Fl. Hall



3rd Floor Hallway Ceiling



3rd Floor Hallway Fire Door



3rd Floor Hallway Overview



Typical 3rd Floor Hallway Closet



3rd Floor Hallway Ceiling



3rd Floor Hallway Ceiling Sheetrock/Texture



4th Floor Hallway Overview, Facing South



Fallen Ceiling Sheetrock/Insulation, 4th Fl. Hallway



4th Floor Hallway Ceiling



4th Floor Hallway Floor (wood bulging under carpet)



Lighting System, S. Emergency Stairwell



Unit 407 Entrance



Unit 407 Main Hallway



Unit 407 Closet



Unit 407 Living Room/Bedroom Overview 1



Unit 407 Living Room/Bedroom Overview 2



Unit 407 Bathroom Overview 1



Unit 407 Bathroom Overview 2



Unit 407 Kitchen Overview



Fluorescent Battery Pack, Unit 407



Light Ballast, 4th Floor Hallway



4th Fl. Hallway Light Ballast Label



4th Floor Hallway Overview, facing North



Typical Hallway Fire Alarm



4th Floor Exercise Room Overview



4th Floor Laundry Room Overview



S. Hallway Emergency Stairwell Fire Door



1st Floor Entrance Hallway



Front Entrance Unit Mailboxes



Front (Main Entrance) Overview



Exterior Front Columns



Typical Exterior Window System, Ground-4th Floors



Wheelchair Lift, Exterior Front Entrance



Address Verification, Front Entrance



The Sombart Apts., N. of Subject Property 1



The Sombart Apts., N. of Subject Property 2



The Duke, NE of Subject Property 1



The Duke, NE of Subject Property 2



E. Armour Blvd., facing East



E. Armour Blvd., facing West



Front (north) Building Overview



Front Landscaping



West Landscaping (Richelieu Apts. To the Right)



The Richelieu Apts., W. of Subject Property



NW Corner Building Overview



West Building Overview 1



Typical Basement Window System



West Water Spigot



West Roof Drain



West Entrance into Basement



Exterior Soffit & Fascia Detail



Southwest Building Overview 1



West Side Water Stain, Likely from Roof



West Building Overview 2



Neighboring (south) Residence



South Lot Utility Pole



West Building Overview 3



Southwest Building Overview 2



Rear (south) Building Overview 1



Rear Building Overview 2



Old Coal Chute



Rear Door System to Emergency Stairwell



Rear Building Overview 3



Southeast Building Overview 1



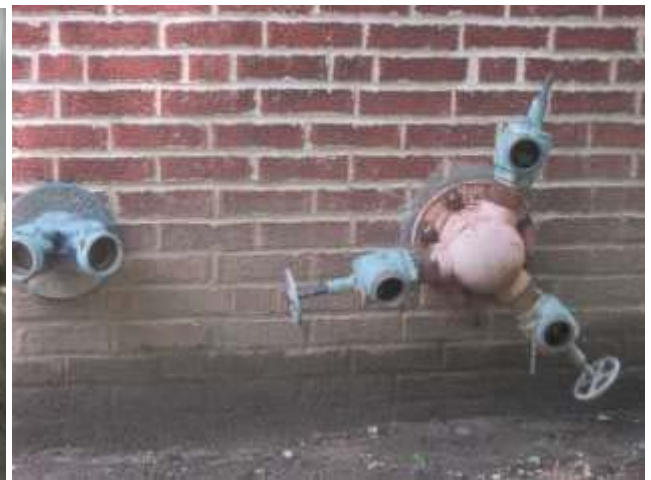
East Building Overview 1



SE Loading Dock Overview 1



SE Loading Dock Overview 2



Fire Hose Hookups, E. Building



Fire Suppression System



Northeast Building Overview 1



Gas Meter, NE Corner of Building



Locust St., facing South

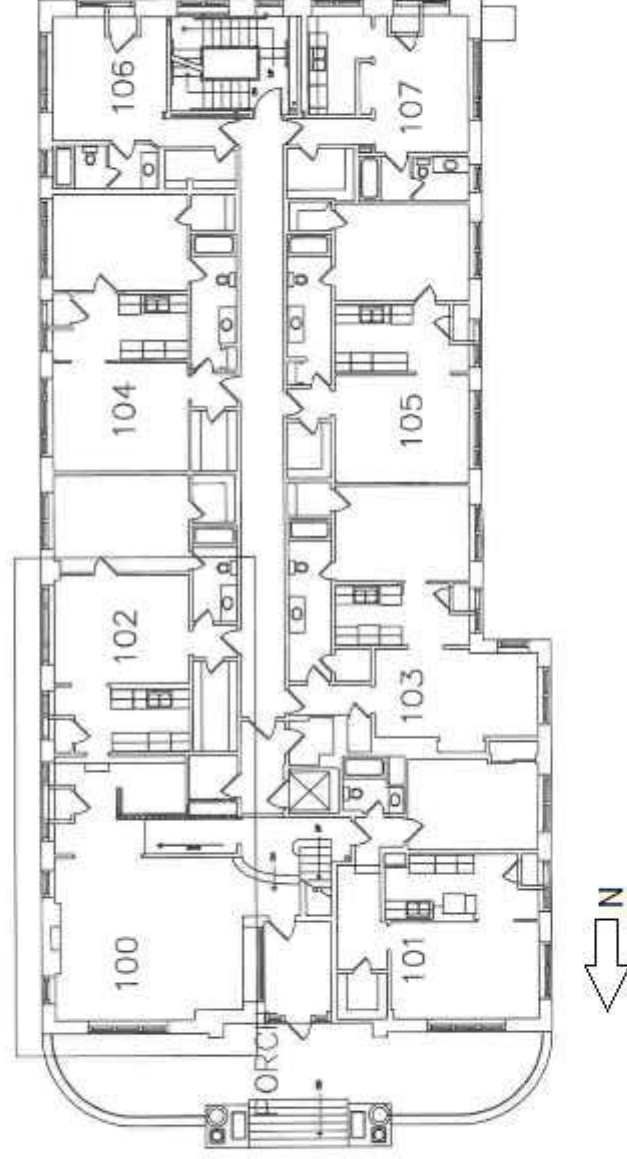


The Pulse, East of Subject Property



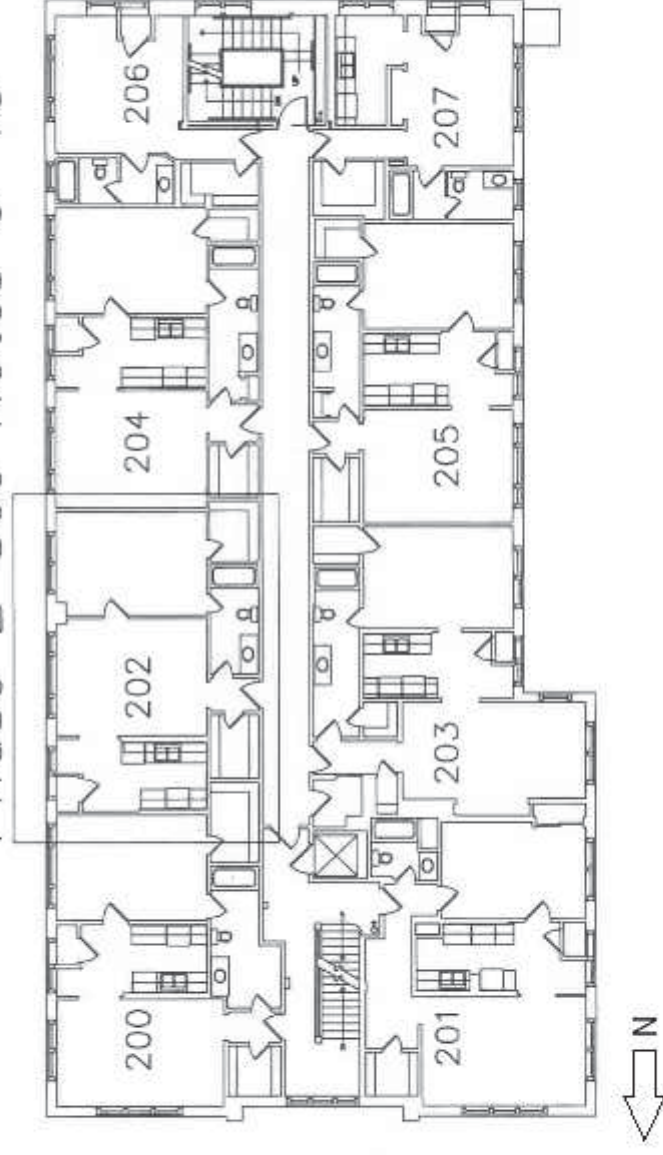
East Building Overview 2

Phase 1 See Notes 1-5
Phase 2 See Notes 6-10

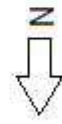
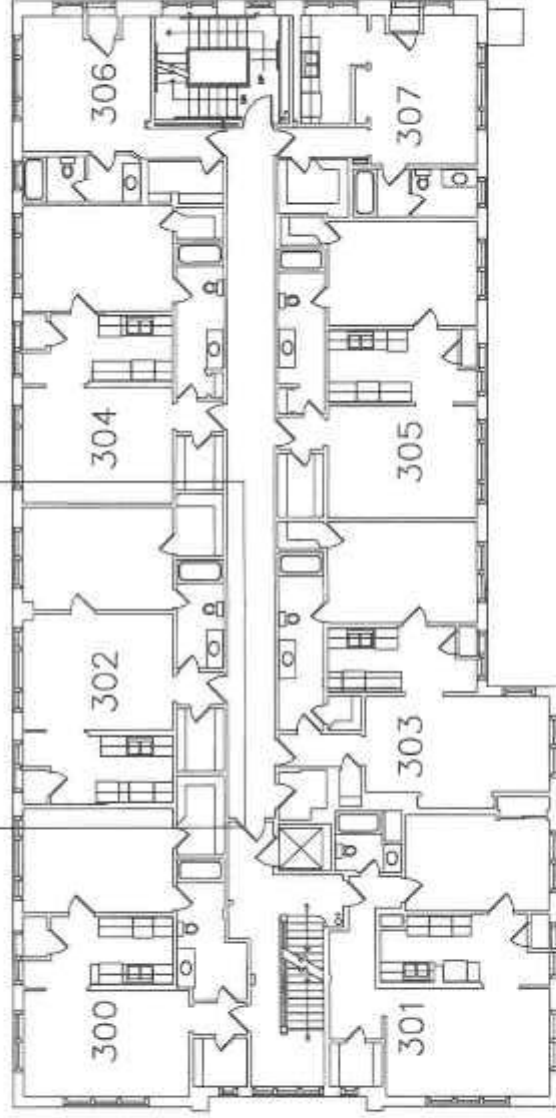


Phase 1 See Notes 1-5

Phase 2 See Notes 6-10

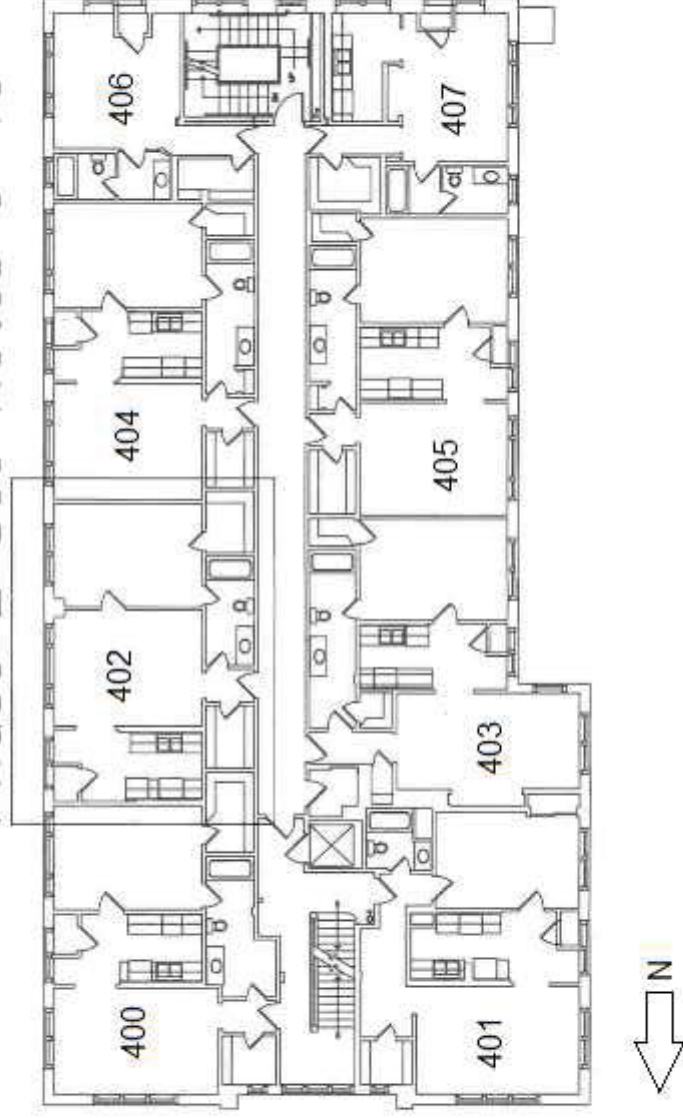


Phase 1 See Notes 1-5
Phase 2 See Notes 6-10



Phase 1 See Notes 1-5

Phase 2 See Notes 6-10



Phase 1 See Notes 4-5

