

APPENDIX A:

Summary of Accomplishments of Individual Trainees

Table of Contents

	Page Number
Table of Contents	A-1
<u>Program Graduates</u>	
Karen Mustian, PhD, MPH	A-2
Jennifer Carroll, MD, MPH	A-12
Colmar Figueroa-Moseley, PhD, MPH	A-16
Sadhna Kohli, PhD, MPH	A-18
Julie Ryan, PhD, MPH	A-20
<u>Current Trainees: Second Year</u>	
Pascal Jean Pierre, PhD	A-22
Oxana Palesh, PhD	A-26
Elizabeth Ryan, PhD (former)	A-28
<u>Current Trainees: First Year</u>	
Supriya Mohile, MD	A-30
Luke Peppone, PhD	A-31
Jason Purnell, PhD	A-32

PROGRAM GRADUATES:

Karen Mustian, Ph.D. MPH



Dr. Karen Mustian is an Exercise Physiologist and Psychologist who is currently a tenure-track Assistant Professor in the Department of Radiation Oncology of the James P. Wilmot Cancer Center with a joint appointment in the Department of Community and Preventive Medicine at the University of Rochester School of Medicine. Dr. Mustian is also a Faculty Associate of the Center for Future Health and the Susan B. Anthony Institute for Women and Gender Studies at the University of Rochester and manages a new Exercise and Cancer Control Research Laboratory. She received her B.S. and M.S. in Exercise Science from East Carolina University, specializing in athletic medicine and biomechanics, and her Ph.D. in Exercise Science focusing on Exercise Psychology and Physiology from the University of North Carolina Greensboro (2003). While a graduate student, she trained Olympic hammer throwers

Dr. Mustian's research is focused on investigating the influence of physical exercise on fatigue, functional capacity, and quality of life, as well as discerning the interrelationships among physical activity, functional capacity, fatigue and quality of life among cancer patients. Her work is currently supported by a K-07 and grants funded by the NCI, NCCAM and DOD and an NCI funded Community Clinical Oncology Program Cooperative Group Research Base Grant for a large nationwide multicenter study of YOGA. Dr. Mustian has been recognized for her excellence in research with awards from the American Society of Clinical Oncology, the Multinational Society of Supportive Care in Cancer, the American Society of Preventive Oncology and the Society of Behavioral Medicine. She is a peer reviewer for several professional journals, serves on grant review committees for the NCI and ACS, and serves on steering committees for several professional organizations such as the Society of Behavioral Medicine.

Karen M. Mustian, PhD	
Publications	(see Section E. Trainee Publications for complete list of publications and abstracts) 21 published manuscripts, 6 as primary author 4 manuscripts in press; 2 as primary author

	3 manuscripts in review; 1 as primary author
Abstracts	36 abstracts, 20 as primary author
Presentations	<p>Mustian, K. M., Hofman, M., Morrow, G. R., Griggs, J. J., Jean-Pierre, P., Kohli, S., Roscoe, J. A., Simondet, J., Bushunow, P. (2006) Cancer-Related Fatigue (CRF) and Shortness of Breath (SOB) Among Survivors: A Prospective URCC CCOP Study. Cancer Survivorship: Embracing the Future NCI Annual Meeting, Bethesda, MD.</p> <p>Mustian, K. M., Griggs, J., Morrow, G., McTiernan, A. (2006) Tailored Exercise for Cancer-Related Fatigue in Women with Metastatic Breast Cancer. United States Centers for Disease Control First International Congress on Physical Activity. Atlanta, GA.</p> <p>Yates, J. S., Mustian, K. M., Hofman, M., Morrow, G. R., Bushunow, P., Atkins, J., & Issell, B. (2004) Interrelationships Between Exercise, Mega-Vitamins, Diets, and Herbal Medicine in Cancer Patients. <u>Annual Meeting of the Society of Integrative Oncology</u>, New York, NY.</p> <p>Roscoe, J. A., Mustian, K. M., Matteson, S. E., Morrow, G. R., Hofman, M. (2004) <u>Treatment of Radiotherapy-Induced Fatigue Through a Non-Pharmacological Approach</u>. Annual Meeting of the Society of Behavioral Medicine, Baltimore, MA.</p> <p>Melton, D., Katula, J. A., Mustian, K., & Sherman, T. (2004). <u>The current state of personal training: An exploratory investigation in the Piedmont Triad area</u>. Southeast Chapter Meeting of the American College of Sports Medicine, Atlanta, GA.</p> <p>Mustian, K. M., Katula, J. A., Gaukstern, J., & Karnitz, A. (2003). <u>Breast cancer, physical activity, and physical appearance self-efficacy</u>. Annual Meeting of the Society of Behavioral Medicine, Salt Lake City, UT.</p> <p>Mustian, K. & Katula, J. (2002). <u>Breast cancer survival, physical activity, and quality of life</u>. National Meeting of the National Cancer Institute and the American Cancer Society: Resilience Across the Lifespan Cancer Survivorship Conference, Washington, DC.</p> <p>Mustian, K. M. & Katula, J. A. (2002). <u>Psychosocial relationships among physical activity and breast cancer: A matched cohort study</u>. Southeast Meeting of the Association for the Advancement of Applied Sport Psychology, Knoxville, TN.</p> <p>Mustian, K. M. & Antoniadou, K. (2002). <u>Dancing breast cancer: An alternative method of presenting feminist research</u>. Regional Women's Studies Conference, Greensboro, NC.</p> <p>Mustian, K. M. & Katula, J. A. (2001). <u>Breast cancer, physical activity, and quality of life</u>. Southeast Meeting of the Association for the Advancement of Applied Sport Psychology, Morgantown, WV.</p> <p>Williams, K., Kovacs, C., & Mustian, K. (2001). <u>Home-based intervention to improve balance, gait, and self-efficacy in older adults</u>. National Meeting of the American Alliance for Health, Physical Education, Recreation, and Dance, Cincinnati, OH.</p> <p>Mustian, K. M. (2000). <u>Honoring and empowering women through the use of Qi Gong</u>. Southeast Women's Studies Association Meeting, Boone, NC.</p> <p>Mustian, K. M. & Keller, D. E. (1997). <u>Transforming obstacles into opportunities, crushing defeat and living well</u>. National Meeting of Community College Wellness Instructors, Dallas, Texas.</p> <p>Mustian, K. M. & Rouse, J. O. (1997). <u>A multi-disciplinary team approach to community college wellness</u>. National Meeting of Community College Wellness Instructors, Dallas, Texas.</p> <p>Mustian, K. M., Stevenson, J. R. & McCoy, R. W. (1994). <u>3D kinematics of the women's shot put performance at the Barcelona Olympic games</u>. Southeast Chapter Meeting of the American College of Sports Medicine, Greensboro, North Carolina.</p> <p>Stevenson, J. R., McCoy, R. W. & Mustian, K. M. (1994). <u>3D kinematic contributions to distance thrown by Olympic women shot putters</u>. Mideast Chapter Meeting of the American College of Sports Medicine, Boyne Mountain, Michigan.</p>

- Mustian, K. M.**, Gorski, L., Leemhuis, M., McAllister, D. & Grion, A. (1993). 3D kinematics of release phase of elite U. S. javelin throwers. Southeast Chapter Meeting of the American College of Sports Medicine, Norfolk, Virginia.
- Mustian, K. M.** (2008). Exercise for Cancer-Related Fatigue and Other Symptoms Among Survivors. American Society of Preventive Oncology Annual Meeting, Washington, D.C.
- Mustian, K. M.** (2007). Integrative Behavioral Medicine Interventions for Symptom Management in Cancer Control. Center for Women's Health, University of North Carolina Greensboro, Greensboro, NC.
- Mustian, K. M.** (2007). Integrative Interventions for Symptom Management in Cancer Control. Rochester Center for Mind-Body Research, University of Rochester School of Medicine, Rochester, NY.
- Mustian, K. M.** (2007). Behavioral Medicine for Symptom Management Among Cancer Patients. Breast Cancer Research Consortium, University of Rochester School of Medicine, Rochester, NY.
- Mustian, K. M.** (2006). Non-Pharmacologic Interventions for Symptom Management in the CCOP. M. D. Anderson Cancer Center, University of Texas Medical Center, Houston, TX.
- Mustian, K. M.** (2006). Behavioral and Integrative Medicine Research in Cancer Control. Finger Lakes School of Massage Therapy, Finger Lakes Community College, Canandigua, NY.
- Mustian, K. M.** (2006). Randomized Controlled Trials With Behavioral Interventions in Cancer Research. Psychology Department, University of Rochester, Rochester, NY.
- Mustian, K. M.** (2005). Behavioral Medicine Research in Cancer. Psychology Department, University of Rochester, Rochester, NY.
- Mustian, K. M.** (2004). Physical activity and quality of life among cancer patients. Susan B. Anthony Institute for Women and Gender Studies, University of Rochester, Rochester, NY.
- Mustian, K. M.** (2002). Administration of health and wellness programs in higher education. Exercise and Sport Science Department, North Carolina A & T University, Greensboro, NC.
- Mustian, K. M.** (2001). Sex and gender: Questions of womaness. Women's Studies Department, Greensboro College, Greensboro, NC.
- Mustian, K. M.** (2000). Breast cancer prevention and exercise. University of North Carolina Greensboro Student Health, Greensboro, NC.
- Mustian, K. M.** (1998). Wellness in the workplace. Coastal Carolina Community College, Jacksonville, North Carolina.
- Mustian, K. M. Keynote** (1997). Transforming obstacles into opportunities. State Meeting of the Associate Degree Nursing Council, Wilmington, North Carolina.
- Mustian, K. M.** (1997). 60 minutes to live. Coastal Carolina Community College, Jacksonville, North Carolina.
- Mustian, K. M. Keynote** (1996). Communicate through color. Coastal Carolina Community College, Jacksonville, North Carolina.
- Mustian, K. M.** (1996) HEALthy Self. Coastal Carolina Community College, Jacksonville, North Carolina.
- Mustian, K. M.** (1995). Well workplace options. Jacksonville City Council and City Employees, Jacksonville, North Carolina.
- Mustian, K. M.** (1995). Worksite wellness. Onslow County Fire Department Station, Jacksonville, North Carolina.
- Mustian, K. M.** (1994). Tanning beds and melanoma. Regional Meeting of the American

	Association of University Women, Jacksonville, North Carolina.
Posters	<p>Mustian, K.M., Palesh, O. G., Heckler, C.E., Roscoe, J. A., Morrow, G. R.. (2008) Cancer-Related Fatigue Interference With Walking, Exercise and Leisure Activities Among 753 Patients During Chemotherapy. The Annual Meeting of the Society of Behavioral Medicine. <u>The Annals of Behavioral Medicine</u>, (in press).</p> <p>Palesh, O. G., Roscoe, J. A., Mustian, K. M., Morrow, G. R., Purnell, J. (2008) Prevalence of Insomnia in 597 Female Cancer Patients Undergoing Chemotherapy: A URCC CCOP Study. The Annual Meeting of the Society of Behavioral Medicine. <u>The Annals of Behavioral Medicine</u>, (in press).</p> <p>Green, J., Mustian, K. M. (2008) Physical Exercise and Self-Esteem Among Metastatic Breast Cancer (MBC) Patients. The Annual Meeting of the Society of Behavioral Medicine. <u>The Annals of Behavioral Medicine</u>, (in press).</p> <p>Mustian, K. M.; Griggs, J. J.; Palesh, O. G., Morrow, G. R. (2007) Feasibility of Tailored Exercise for Improving Sleep Disruption in Women with Metastatic Breast Cancer. The Multi-National Association of Supportive Care in Cancer Annual Meeting. <u>The Journal of Supportive Care in Cancer</u>, 15(6), 780.</p> <p>Mustian, K. M.; Griggs, J. J.; Palesh, O.; Morrow, G. R. (2007) Feasibility of Tailored Exercise for Improving Sleep Disruption in Women with Metastatic Breast Cancer. <i>The Annual Meeting of the American Society of Clinical Oncology</i>. <u>The Journal of Clinical Oncology</u>, 25(18), 524.</p> <p>Mustian, K. M., Griggs, J. J., Morrow, G., *Flecksteiner, S. (2007) Tailored Exercise Improves Aerobic Capacity, Strength, Flexibility and Balance in Women with Metastatic Breast Cancer. American College of Sports Medicine Annual Meeting, <u>Medicine and Science in Sport and Exercise</u>, 39(5), 63.</p> <p>Mustian, K. M., Katula, J. A., Williams, J., Moynihan, J., Morrow, G. (2007) Tai Chi Chuan, Immune Function, and Cardiorespiratory Fitness Among Breast Cancer Survivors. The Annual Meeting of the Society of Behavioral Medicine. <u>The Annals of Behavioral Medicine</u>, 33, 95.</p> <p>Roscoe, J. A., Morrow, G. R., Palesh, O. G., Kohli, S., Mustian, K. M. (2007) Modafinil (Provigil®) for Sleep Disturbance and Fatigue in Cancer Survivors. The Annual Meeting of the Society of Behavioral Medicine. <u>The Annals of Behavioral Medicine</u>, 33, 58.</p> <p>Mustian, K. M., Williams, J., Moynihan, J., Morrow, G. R., Carroll, J., Jean-Pierre, P., *Flecksteiner, S., Heckler, L. (2006) A Pilot Study of the Influence of Tai Chi Chuan on Immune Function and Associations With Cardiorespiratory Fitness Among Breast Cancer Survivors. The Multi-National Association of Supportive Care in Cancer Annual Meeting. <u>The Journal of Supportive Care in Cancer</u>, 14(6), 617.</p> <p>Morrow, G. R., Ryan, J., Kohli, S., Jean-Pierre, P., Carroll, J., Figueroa-Moseley, C., Mustian, K., Hofman, M. (2006) Modafinil (Provigil®) for persistent post-treatment fatigue: An open label study of 82 women with breast cancer. The Multi-National Association of Supportive Care in Cancer Annual Meeting. <u>The Journal of Supportive Care in Cancer</u>, 14(6), 619.</p> <p>Mustian, K. M., Morrow, G., Yates, J., Gillies, L., Boles, C. (2006) A randomized controlled pilot of home-based exercise (HBEX) versus standard care (SC) among breast (BC) and prostate cancer (PC) patients receiving radiation therapy (RTH). The Annual Meeting of the American Society of Clinical Oncology. <u>The Journal of Clinical Oncology</u>, 24(18), 468.</p> <p>Kohli, S., Griggs, J., Pascal, J., Mustian, K. M., Roscoe, J., Wade, J., Kuebler, J., Fishkin, E., Morrow, G. (2006) Self-Reported Cognitive Impairment in Cancer Patients: a URCC CCOP Longitudinal Study of 595 Patients. The Annual Meeting of the American Society of Clinical Oncology. <u>The Journal of Clinical Oncology</u>, 24(18), 469.</p> <p>Mustian, K. M., Griggs, J., Bukata, S., Podgorski, C., Morrow, G. (2006) Feasibility of Physical Exercise for Improving Quality of Life among Women with Metastatic Breast</p>

Cancer (MBC). The Annual Meeting of the Society of Behavioral Medicine. The Annals of Behavioral Medicine, 31, 135.

Hickok, J.T., **Mustian, K.M.**, Morrow, G.R., Roscoe, J.A., Fitch, T., Atkins, J. (2005) Differential effects of serotonin receptor antagonists on nausea (N) and vomiting (V) associated with moderately-emetogenic chemotherapy. The Multi-National Association of Supportive Care in Cancer Annual Meeting. The Journal of Supportive Care in Cancer 13, 482.

Mustian, K. M., Hickok, J. T., Morrow, G. R., Roscoe, J. A., Okunieff, P. (2005) Occurrence, Severity And Longitudinal Course Of Symptoms In 1129 Patients During Radiation Therapy. The American Society of Clinical Oncology Annual Meeting. The Journal of Clinical Oncology, 23(16S), 738.

Ranson, S., Morrow, G., Conrad, M., Banerjee, T., Holtz, T., Hofman, M., **Mustian, K. M.** (2005) Decision-making roles and activity in information seeking among cancer patients: A URCC CCOP Research Base study. The American Society of Clinical Oncology Annual Meeting. The Journal of Clinical Oncology, 23(16S), 749.

Roscoe, J. A., Morrow, G. R., Hickok, J. T., **Mustian, K. M.**, Brasacchio, R., Ling, M., Chen, Y., Okunieff, P. (2005) The Efficacy Of Acupressure Bands In Reducing Radiation Therapy-Induced Nausea Is Enhanced When Combined With Expectancy Enhancing Information. The American Society of Clinical Oncology Annual Meeting. The Journal of Clinical Oncology, 23(16S), 768.

Mustian, K. M., Morrow, G. R., Roscoe, J. (2005) Home-Based Exercise, Health-Related Fitness, Fatigue, Sleep, and HRQL Among Cancer Patients Undergoing Radiation. The American College of Sports Medicine Annual Meeting. Medicine and Science in Sport and Exercise, 37(5), 201.

Mustian, K. M., Morrow, G. R., Williams, J., Griggs, J. J., Padmanaban, D., Bole, C. (2005) Relationships Between Cancer-Related Fatigue (CRF), Physical Activity (PA), and Immune Function (IF) Among Breast Cancer Patients. The Society of Behavioral Medicine Annual Meeting. Annals of Behavioral Medicine, 29, 34.

Padmanaban, D., **Mustian, K. M.**, Roscoe, J. R., Bole, C., (2005) Association of Serum Cytokines with Side-Effects and Physical Activity in Breast Cancer Patients Receiving Chemotherapy. The Society of Behavioral Medicine Annual Meeting. Annals of Behavioral Medicine, 29, 100.

Mustian, K. M., Morrow, G. R., Hofman, M., Atkins, J. N., Conrad, M. (2004) Exercise during treatment for cancer: A URCC CCOP study. Supportive Care in Cancer, 12, 398.

Mustian, K. M., Katula, J. A., Roscoe, J., Morrow, G., (2004) The influence of Tai Chi (TC) and Support Therapy (ST) on fatigue and quality of life (QOL) in women with breast cancer (BC). Journal of Clinical Oncology, 23, 760.

Yates, J., Morrow, G., **Mustian, K.**, Hofman, M., Bushunow, P., Flynn, P., Rosenbluth, R. (2004) Are cancer patients utilizing complementary therapies?: A URCC CCOP study. Journal of Clinical Oncology, 23, 764

Mustian, K. M., Katula, J. A., Lang, D., Murphy, K. (2004) Breast cancer, Tai Chi, and health-related fitness. Medicine and Science in Sports and Exercise, 36, S284.

Davis, P. G., **Mustian, K. M.**, Katula, J. A., Wideman, L. (2004) Tai Chi Chuan and insulin-like growth factor-I (IGF-I) in breast cancer survivors. Medicine and Science in Sports and Exercise, 36, S97.

Mustian, K. M., Katula, J. A., Lang, D., Murphy, K. (2004) Breast cancer, Tai Chi, and self-esteem. Annals of Behavioral Medicine, 27, S019.

Mustian, K. M., Katula, J. A., Melton, D., Lang, D., Gaukstern, J., & Hesse, A. (2003). Physical self-esteem among breast cancer survivors. Journal of Sport and Exercise Psychology, 25, S86.

Mustian, K. M. & Katula, J. A. (2003). Breast cancer, physical activity, and perceived

	<p>physical ability. <u>Medicine and Science in Sports and Exercise</u>, 35(5) S400.</p> <p>Katula, J. A. Gaukstern, J. Hesse, A., Mustian, K. & Lang, D. (2003). Neuroticism, intensity, and the anxiolytic effect of exercise. <u>Annals of Behavioral Medicine</u>, 25, S6.</p> <p>Mustian, K. M., Katula, J. A., Gabriele, J. M. Gaukstern, J. Karnitz, A., Campbell, S., & Steadman, L. (2002). Physical activity influences on multi-dimensional self-esteem in breast cancer survivors. <u>Journal of Sport and Exercise Psychology</u>, 24, S99.</p> <p>Katula, J. A., Gaukstern, J., Karnitz, L. Steadman, L. & Mustian, K. M. (2002). Acute exercise effects on state self-esteem. <u>Journal of Sport and Exercise Psychology</u>, 24, S78.</p> <p>Mustian, K. M., Katula, J. A., Gabriele, J. M. & Jamieson, K. M. (2002). Quality of life and physical activity in short and long-term breast cancer survivors. <u>Annals of Behavioral Medicine</u>, 24, S169.</p> <p>Katula, J. A., Gaukstern, J., Karnitz, A., Steadman, L., & Mustian, K. (2002). Gender differences in exercise self-efficacy. <u>Annals of Behavioral Medicine</u>, 24, S111.</p> <p>Katula, J. A., Mustian, K. M. & Bonaccorsi, D. A. (2001). The influence of the exercise environment on physical appearance Anxiety. <u>Annals of Behavioral Medicine</u>, 23, S101.</p> <p>Mustian, K. M., Stevenson, J. R. & McCoy, R. W. (1994). "3D kinematic analysis of Olympic women shot putters." <u>Medicine and Science in Sports and Exercise</u>, 26(5), S175.</p> <p>Stevenson, J. R., McCoy, R. W., & Mustian, K. M. (1994). 3D kinematics of the women's shot put performance at the Barcelona Olympic games. <u>Sports Medicine, Training and Rehabilitation</u>, (25)5, S512.</p> <p>Mustian, K. M., Stevenson, J. R. & McCoy, R. W. (1994). 3D kinematic contributions to distance thrown by Olympic shot putters in Barcelona. <u>The North Carolina Journal of the Alliance for Health, Physical Education, Recreation, and Dance</u>. (30)1, 26.</p> <p>Stevenson, J. R., McCoy, R. W. & Mustian, K. M. (1993). Biomechanical analysis of Olympic shot put throws: Preliminary data from the Barcelona Games. <u>The North Carolina Journal of the Alliance for Health, Physical Education, Recreation, and Dance</u>. (29)1, 24.</p>
Workshops	<p>University of South Carolina School of Public Health Fellow Award, "Physical Activity and Public Health Postgraduate Course on Research Directions and Strategies," University of South Carolina, Park City, Utah 2006</p> <p>National Cancer Institute Summer Fellow Award, "NCI Cancer Control and Population Sciences Advanced Training Institute on Health Behavior Theory," NCI, Madison, WI 2006</p> <p>American Society of Preventive Oncology New Investigator Award, ASPO New Investigator Workshop 2006</p> <p>National Institutes of Health Summer Fellow Award, "NIH Summer Institute on the Design and Conduct of Randomized Clinical Trials Involving Behavioral Interventions," NIH, Arlie, VA 2005</p> <p>National Institutes of Health, National Cancer Institute, Office of Cancer Complimentary and Alternative Medicine Fellow Award, Second Summer Institute on "Technical Assistance on How to Write a Grant in Cancer CAM." NCI, Bethesda, MA 2005</p> <p>National Institutes of Health Summer Fellow Award, Summer Institute on "Sleeping, Eating & Physical Activity: A Focus on Health Behavior," University of Pittsburgh School of Medicine and Carnegie Mellon University, Pittsburgh Mind-Body Center 2005</p>
Conferences	<p>American Society of Clinical Oncology Annual Meeting; 2004-2007</p> <p>Society of Behavioral Medicine Annual Meeting; 2001-2007</p> <p>American College of Sports Medicine Annual Meeting: 2001-2007</p> <p>American Society of Preventive Oncology; 2005-2007</p> <p>National Cancer Survivor Conference; 2006</p> <p>CDC International Congress on Physical Activity; 2006</p>

	<p>Multinational Association of Supportive Care in Cancer Annual Meeting; 2006 American Association of Cancer Research Ubiquitin Meeting; 2005</p>
<p>Other grant participation</p>	<p>2007 Mustian, K. M. (PI), Morrow, G., McTiernan, A., Pentland, A., Griggs, J., Ling, M., Moynihan, J., Williams, J., Zhao, H., <i>Aerobic and Resistance Exercise for Cancer-Related Fatigue During Radiation</i>: Funded: National Cancer Institute NIH \$678,199.00.</p> <p>2007 Mustian, K. M. (PI), Morrow, G., Diefenbach, M., Zhao, H., <i>Exercise During Radiation for Cancer-Related Fatigue Among Prostate Cancer Patients</i>: Funded: Department of Defense \$585,000.00.</p> <p>2006 Mustian, K. M. (PI), Morrow, G., McTiernan, A., Pentland, A., Griggs, J., Ling, M., Moynihan, J., Williams, J., Zhao, H., <i>Aerobic and Resistance Exercise for Cancer-Related Fatigue During Radiation</i>: Funded: American Cancer Society \$726,380.00 (declined in order accept NCI K-award grant listed above).</p> <p>2006 Morrow, G. R., Bushunow, P., Roscoe, J., Mustian, K. M. (Co-Investigator), <i>University of Rochester Cancer Center CCOP Research Base</i>. Funded: National Cancer Institute NIH \$5,120,000.00</p> <p>2005 Mustian, K. M. (PI), Morrow, G., Roscoe, J., Pentland, A., Ling, M., <i>Polarity Therapy for Cancer-Related Fatigue</i>. Funded: National Center for Complementary and Alternative Medicine (Dually assigned National Cancer Institute) NIH \$575,480.00.</p> <p>2005 Roscoe, J (PI); Mustian, K. (Co-investigator); Morrow, G. <i>Patient Expectations and Chemotherapy-Induced Nausea</i>. Funded: National Cancer Institute NIH \$502,147.00.</p> <p>2004 Mustian, K. M. (Study PI); Morrow, G. R. (URCC CCOP Research Base PI); Atkins, J.; Issell, B.; & Zhao, H. <i>Yoga for Persistent Sleep Disturbance in Cancer Survivors: A URCC CCOP Study</i>. Funded: National Cancer Institute/Office of Cancer Complementary and Alternative Medicine CCOP Research Base Supplement \$110,000.00.</p> <p>2004 Mustian, K. M. (PI); Griggs, J. J.; Podgorski, C.; Hall, W.; O'Keefe, R.; Brooks, B. <i>A Structured and Supervised Physical Exercise Program To Improve Quality of Life In Women with Metastatic Breast Cancer</i>. The purpose of this project is to 1) evaluate the feasibility of participation in an 8-week structured and supervised physical exercise program by women diagnosed with metastatic breast cancer, and 2) to evaluate the influence of the exercise program on functional capacity, quality of life, fatigue, depression, anxiety, and sleep. Funded: Roche Biomedical \$6,000.00.</p> <p>2003 Davis, P. G. (PI), Mustian, K. M. (Co-Investigator), Katula, J. A., & Wideman, L. <i>Effect of Tai Chi Chuan on Tumor Regulating Factors in Breast Cancer Survivors</i>. The purpose of this project is to 1) compare the effect of Tai Chi Chuan training on serum concentrations of IGF binding proteins (IGFBP), IGFBP-1 and IGFBP-3, to the effect of traditional psychosocial therapy, and 2) compare the effect of Tai Chi Chuan training on serum concentrations of insulin resistance-association factors known to regulate IGF-I, IGFBP-1, and/or IGFBP-3 (insulin, triglycerides, free fatty acids, estrogens, and cortisol) to the effect of traditional psychosocial therapy. Funded: The Center for Women's Health and Wellness \$5,000.</p> <p>2002 Mustian, K. M. (PI) <i>Breast Cancer, Tai Chi Chuan, and Self-Esteem: A Randomized Trial</i>. In collaboration with the Moses Cone Regional Cancer Center and the Regional office of the American Cancer Society the purpose of this project is to 1) develop and implement a Tai Chi Chuan exercise intervention designed to enhance functional capacity and self-esteem in breast cancer survivors, and 2) compare the differential effects of Tai Chi Chuan and psychosocial support therapy on the health-related fitness and self-esteem of breast cancer survivors. Funded: Sally Schindel Cone Women's Studies Research Award \$700.00.</p> <p>2002 Mustian, K. M. (PI) <i>Breast Cancer, Tai Chi Chuan, and Self-Esteem: A Randomized Trial</i>. See description above. Funded: Stout Research Award \$800.00.</p>

	<p>2001 Katula, J. A. (Co-PI), Mustian, K. M. (Co-PI), Sullivan, K. & Johnson, K. <i>Surviving Breast Cancer: Physical Activity and Quality of Life</i>. In collaboration with the Moses Cone Regional Cancer Center and the Regional office of the American Cancer Society this is a multiphased project examining the (1) impact of breast cancer on quality of life, and (2) role of physical activity in enhancing quality of life. Funded: Center for the Study of Social Issues \$8,500.</p> <p>2001 Mustian, K. M. (PI) <i>Breast Cancer, Physical Activity and Quality of Life</i>. In collaboration with the Regional office of the American Cancer Society this is a qualitative investigation examining the (1) impact of breast cancer on quality of life, (2) impact of breast cancer on body image, and (3) the role of physical activity as a moderator between breast cancer and quality of life. Funded: Sally Schindel Cone Women's Studies Research Award \$1,000.</p>
<p>Awards or Special Recognition (includes special committee assignments)</p>	<p>Society of Behavioral Medicine Outstanding Research Citation Award, "Tai Chi Chuan (TCC), Immune Function (IF) and Cardiorespiratory Fitness (CF) Among Breast Cancer Survivors," Washington, DC 2007</p> <p>Most Outstanding Cancer Control Research Poster Award, James P. Wilmot Cancer Center Annual Symposium (co-author with student mentee *Stephanie Flecksteiner) 2006</p> <p>University of South Carolina School of Public Health Fellow Award, "Physical Activity and Public Health Postgraduate Course on Research Directions and Strategies," University of South Carolina, Park City, Utah 2006</p> <p>National Cancer Institute Summer Fellow Award, "NCI Cancer Control and Population Sciences Advanced Training Institute on Health Behavior Theory," NCI, Madison, WI 2006</p> <p>American Society of Clinical Oncology Merit Research Award 2006</p> <p>American Society of Preventive Oncology New Investigator Award 2006</p> <p>National Institutes of Health Clinical Investigator Loan Repayment Award 2005 and 2007</p> <p>National Institutes of Health Summer Fellow Award, "NIH Summer Institute on the Design and Conduct of Randomized Clinical Trials Involving Behavioral Interventions," NIH, Arlie, VA 2005</p> <p>National Institutes of Health, National Cancer Institute, Office of Cancer Complimentary and Alternative Medicine Fellow Award, Second Summer Institute on "Technical Assistance on How to Write a Grant in Cancer CAM." NCI, Bethesda, MA 2005</p> <p>National Institutes of Health Summer Fellow Award, Summer Institute on "Sleeping, Eating & Physical Activity: A Focus on Health Behavior," University of Pittsburgh School of Medicine and Carnegie Mellon University, Pittsburgh Mind-Body Center 2005</p> <p>Most Outstanding Cancer Control Research Poster Award, James P. Wilmot Cancer Center Annual Symposium (co-author) 2004</p> <p>2004 National Institutes of Health Rochester Clinical Research Fellow Award, University of Rochester School of Medicine and Dentistry, Department of Community and Preventative Medicine</p> <p>Best Research Poster Award, Multinational Association for Supportive Care in Cancer 2004</p> <p>National Cancer Institute Biobehavioral Cancer Control Research</p> <p>Training Fellowship Award, University of Rochester School of Medicine and Dentistry, James P. Wilmot Cancer Center, Department of Radiation Oncology, Behavioral Medicine Unit 2004</p> <p>National Institutes of Health Summer Fellow Award, Summer Institute on "Basic Pathways Linking Behavior and Disease," University of Pittsburgh School of Medicine and Carnegie Mellon University, Pittsburgh Mind-Body Center 2004</p> <p>Fisher Most Outstanding Dissertation Award, University of North Carolina at Greensboro 2004</p>

	<p>Most Outstanding Graduate Research and Teaching Assistant, School of Health and Human Performance, University of North Carolina Greensboro 2002-2003</p> <p>Sigma Phi Omega, National Honor and Professional Society in Gerontology 2003</p> <p>Kate Barrett Scholarship 2003</p> <p>National Cancer Institute and American Cancer Society Scholarship 2002</p> <p>Sally Schindel Cone Women's Studies Most Outstanding Graduate Student Project Award 2001</p> <p>American Cancer Society Outstanding Leadership and Service Award 1998</p> <p>Rubbermaid Scholarship 1985</p> <p>Athletic Scholarship Shenandoah University (declined) 1985</p>
<p>Ongoing Research</p>	<p><u>Aerobic and Resistance Exercise for Cancer-Related Fatigue During Radiation:</u> A randomized, 2-arm, controlled clinical trial that will accrue 122 female breast cancer patients receiving radiation therapy. The main study goal is to examine the effect of a home-based walking and progressive resistance exercise intervention on CRF. Secondary goals are to provide preliminary data on the intervention effects on potential etiological factors and independent markers for CRF including loss of skeletal muscle mass, changes in muscle strength, potential dysregulation of inflammatory responses associated with the proteasome ubiquitin pathway, nuclear and mitochondrial gene expression (dysregulation/intoxification), and the use of accelerometer motion data as an objective marker of CRF.</p> <p><u>University of Rochester Cancer Center Research Base for Community Clinical Oncology Program (CCOP):</u> An NCI-funded cooperative group program grant, coordinating twenty five affiliated NCI CCOP members that design and implement cancer control protocols for large multi-center clinical oncology trials that impact standard care in clinical oncology.</p> <p><u>The Influence of Home-Based Aerobic and Resistance Exercise on Cancer-Related Fatigue, Strength, and Muscle Mass in Prostate Patients during Radiotherapy:</u> A randomized controlled phase II clinical trial recruiting 116 prostate cancer patients. The primary objective is to provide efficacy and feasibility data on whether a home-based exercise program improves fatigue, strength and muscle mass in prostate cancer patients receiving radiation therapy.</p> <p><u>Yoga for Persistent Sleep Disturbance in Cancer Survivors:</u> A multi-center national randomized clinical trial that will recruit 300 cancer survivors to investigate the efficacy of a 4-week Hatha Yoga program for improving sleep disturbances among cancer survivors experiencing persistent sleep problems during the first year after completing standard treatments (e.g., surgery, chemotherapy, radiation therapy).</p> <p><u>A Study of the Effects of Polarity and Massage Therapy on Cancer-Related Fatigue:</u> A randomized 4-week clinical trial comparing the influence of polarity therapy, massage therapy, and standard care on the fatigue, sleep disruption, quality of life, cortisol, and pro-inflammatory cytokine levels of 60 breast cancer patients receiving radiation therapy.</p> <p><u>A Feasibility Pilot Study of a Structured and Supervised Physical Exercise Program To Improve Quality of Life In Women with Metastatic Breast Cancer:</u> A clinical trial study investigating the feasibility and efficacy of a structured and supervised physical exercise program for women diagnosed and undergoing treatment for metastatic breast cancer on functional capacity (e.g., cardiovascular, respiratory, musculoskeletal health), fatigue, quality of life, sleep and self-esteem.</p> <p><u>A Feasibility Pilot Study of the Effects of Chemotherapy on Bone Health in Premenopausal Women Being Treated for Early Breast Cancer:</u> A clinical trial assessing the 1) natural history of bone mineral loss, 2) historical, biochemical and radiologic markers that will identify those premenopausal women who are at highest risk for clinically important bone loss, (e.g., physical activity patterns, bone turnover markers, blood</p>

	<p>cell counts, hormone levels, and DEXA scans), 3) validity of standard measures of bone loss used with the general population to determine if they have the same predictive ability in women being treated for early breast cancer in premenopausal women with early stage breast cancer as they undergo chemotherapy. Finally, we plan to obtain information that will permit the design an implementation of a cost effective intervention for the prevention of clinically significant bone loss in this population, such as a physical exercise program.</p> <p><u>BREATHE: BReast cancer Exercise And Total Health Enhancement</u></p> <p>A randomized 12-week clinical trial comparing the effects of Tai Chi exercise and structured support therapy on multidimensional self-esteem, quality of life, self-efficacy, mood, fatigue, health-related fitness, and tumor regulators (e.g. IGF-I, IGFBP-I, IGFBP-III, estrogen).</p>
<p>Journal Peer Review Activities</p>	<p>Guest Editor, Cancer, Aging in the Context of Cancer Prevention and Control: Perspectives from Behavioral Medicine Special Issue. (2007-2008).</p> <p>Grant Reviewer, National Institutes of Health, National Cancer Institute, Small grants (R03) in Cancer Prevention and Control Grant Review Committee (2007)</p> <p>Executive Member, National Institutes of Health, National Cancer Institute, Symptom Management and Health-Related Quality of Life (SxQOL) Steering Committee (2007-present)</p> <p>Permanent Grant Reviewer, American Cancer Society CPPBR Research Grant Review Committee (2006-present)</p> <p>Grant Reviewer, University of Rochester School of Medicine, Center for Translational Science Institute, Research Grant Review Committee (2006-present)</p> <p>Grant Reviewer, National Institutes of Health, National Cancer Center, Community Clinical Oncology Programs, Cooperative Groups, and Research Bases Grant Review Committee (2006-present)</p> <p>Reviewer, Cancer (2006-present)</p> <p>Reviewer, Annals of Behavioral Medicine (2006-present)</p> <p>Co-Chair and member, Society of Behavioral Medicine Cancer Special Interest Group, USA (2006-present)</p> <p>Reviewer, Society of Behavioral Medicine Annual Meeting Abstracts and Symposia (2005-present)</p> <p>Reviewer, American College of Sports Medicine Oncology Exercise Specialist Certification Board (2006 – present)</p> <p>Reviewer, American Journal of Preventive Medicine (2006-present)</p> <p>Reviewer, American Society of Preventive Oncology Annual Meeting Abstracts (2006)</p> <p>Grant Reviewer, United Kingdom Department of Health Review Committee (2006)</p> <p>Ad Hoc Grant Reviewer, American Cancer Society CPPBR Research Grant Review Committee (2006)</p> <p>Reviewer, Journal of Sport and Exercise Psychology (2005-present)</p> <p>Reviewer, Journal of Physical Activity and Health (2005-present)</p> <p>Reviewer, Archives of Internal Medicine (2005-present)</p> <p>Reviewer, Diabetes Care (2005-present)</p> <p>Reviewer, American Journal of Health Behavior (2005-present)</p> <p>Steering committee and member, Society of Behavioral Medicine Cancer Special Interest Group, USA (2004-2005)</p> <p>Member, Society of Behavioral Medicine Physical Activity Special Interest Group, USA (2003-present)</p>

	Member, American College of Sports Medicine Cancer Special Interest Group, USA (2003-present)
Grants Submitted	2007 Voss, J. (PI); Mustian, K. M. (PI) ; <i>Mitochondrial gene expression changes during radiation in prostate cancer</i> . Submitted to the National Institute for Nursing Research \$575,000.00 (pending). 2008 Dzakowic, J. E.(PI); Mustian, K. M. (PI) ; Personal Wellness System for Cancer Patients: Submitted to the National Cancer Institute (pending).
Grants – Planned New Submissions	American Cancer Society Research Scholar Grant; October 2008 “Tai Chi Chuan for Cancer Survivors” Amount of Award: \$800,000.00 National Center for Complementary and Alternative Medicine; 2008 “Polarity Therapy for Cancer-Related Fatigue Among Breast Cancer Patients” Amount of Award: \$2,500,000.00 National Cancer Institute, 2008 “A Structured and Supervised Community Based Exercise Program for Women with Metastatic Breast Cancer” Amount of Award: \$360,000.00

Jennifer Carroll, MD, MPH



Dr. Jennifer Carroll received her MD from the University of Connecticut after completing her undergraduate work at Wellesley College. She is currently an assistant Professor in the Department of Family Medicine with a dual appointment in Radiation Oncology. Prior to entering the program, she organized and ran a medical clinic for Somali refugees recently settled in the Rochester area. Having previously earned her MPH, her program was concentrated on developing skills in clinical research with a focus on randomized trials, publishing more and developing pilot data to support a career development grant application. She completed two pilot studies in the program: “*A Direct Observation of Physical Activity Counseling in Underserved Communities* and “*A Communication Intervention to Promote Physical Activity in Underserved Populations*. “The goal of this pilot work was to examine clinician counseling and discussion about physical activity in the primary care setting, to understand the patient’s recall of physical activity counseling and its association with

satisfaction and to attempt to change behavior, and to assess the feasibility of an office-based intervention to promote communication about physical activity. Her data formed the basis for an NCI K-07 application that received a 172 as well as an ACS Faculty Development Award that would have been the next one funded if

sufficient funds were available. Both have been resubmitted along with a new K-12 application for local funding under our CTSI.

Jennifer Carroll, MD, MPH	
Publications	<p>(see Section E. Trainee Publications for complete list of publications and abstracts)</p> <p>3 published manuscripts, 2 as primary author</p> <p>6 manuscripts in press; 3 as primary author</p> <p>5 manuscripts in review; 2 as primary author</p>
Abstracts	12 abstracts, 6 as primary author
Presentations	<p>Presenter, Overview of Refugee Health and Clinical Care with Asylum-seekers, Global Health Course, University of Rochester School of Nursing, Sep 2005.</p> <p>5A Model and Behavioral Change, University of Rochester School of Medicine, GI Fellows Training Module, Aug 2006</p> <p>Working with Refugees in Primary Care and Community Settings, Global Health and Emerging Diseases, University of Rochester School of Nursing, Sep 2006.</p> <p>Challenges to Mental Health Service Provision to Refugees: A Community-based Perspective, University of Rochester Department of Psychiatry Grand Rounds, Jan 2007.</p> <p>Exercise and Cancer Prevention, Department of Family Medicine Grand Rounds Beth Israel/Institute for Urban Family Health New York, NY, Jan 2007.</p> <p>Obesity and Lifestyle Change”, University of Rochester Department of Family Medicine, Mar 2007.</p> <p>New York State Conference on Increasing Language Access in Healthcare/ Providing Linguistically Competent Care to Perinatal and Reproductive Health Clients, Albany, NY, Apr 2007.</p> <p>Current Concepts in Physical Activity and Cancer Prevention, University of Rochester Department of Family Medicine Grand Rounds, Apr 2007.</p>
Posters	<p>Carroll J, Diaz K, Volpe E, Epstein RM, Omar S. (Oct 2005) Health Promotion and Preventive Health Services among Somali Women. 33rd Annual Meeting of the North American Primary Care Research Group, Quebec City, Canada, 221.</p> <p>Carroll J, Epstein R, Morrow, GR, Volpe, E, Diaz K, Omar S, Fiscella, K, Jean-Pierre, P, Figueroa-Moseley, C. (Nov 2005) Health Promotion and Cancer Screening Services Among Somali Women . 10th Annual Scientific Symposium of the University of Rochester James P. Wilmot Cancer Center.</p> <p>Jean-Pierre P, Roscoe JA, Morrow GR, Figueroa-Moseley C., Carroll J (Nov 2005) Understanding socio-demographic predictors of patients’ concerns over understanding their diagnosis and treatment plan: A URCC CCPO Research Base study. 10th Annual Scientific Symposium of the University of Rochester James P. Wilmot Cancer Center.</p> <p>Carroll J, Epstein RM, Fiscella K, Volpe, E, Diaz K, Omar S. (2006) Health Promotion and Preventive Services for African Women. 39th Society of Teachers of Family Medicine Annual Spring Conference, 34.</p> <p>Carroll JK, Epstein RM, Fiscella K, Volpe E, Jean-Pierre P, Figueroa-Moseley C, Morrow GM. (Jun 2006) Cancer Screening Services among African Refugee women. Annual Meeting of the American Society of Clinical Oncology. The Journal of Clinical Oncology 24 (18S), 6101.</p>

	<p>Carroll JK, Epstein RM, Jean-Pierre P, Fiscella K, Figueroa-Moseley C, Morrow GM. (2007) Clinician-patient communication about physical activity in underserved populations. The Annual Meeting of the Society of Behavioral Medicine, <u>Annals of Behavioral Medicine</u> (33), S082.</p> <p>Carroll JK, Epstein RM, Jean-Pierre P, Figueroa-Moseley C, Morrow GM. (2007) Clinician-Patient Communication about Physical Activity in an Underserved Population. Annual Meeting of the American Society of Preventive Oncology, <u>31st Annual Meeting Program & Abstracts</u>, 34.</p> <p>Carroll JK, Epstein RM, Volpe E, Diaz K, Morrow GR, Jean-Pierre P. Health promotion and cancer screening services for African refugee women. European Association for Communication in Healthcare Annual Conference, Sep 2006.</p> <p>Carroll JK, Epstein RM, Fiscella K, Jean-Pierre P, Figueroa-Moseley C, Morrow GM. Communication about physical activity in an underserved community. American Cancer Society Annual Meeting: Bridging the Health Care Divide-Research and Programs to Eliminate Cancer Disparities, Apr 2007</p> <p>Brown EJ, Carroll JK, Fogarty CT, Holt C. 'They gonna die': Somali women's fears of obstetrical interventions in the United States. Society of Teachers of Family Medicine Annual Spring Conference, Apr 2007.</p>
Workshops	Participant, NIH OBSSR Summer Institute "Design and Conduct of Randomized Clinical Trials for Behavioral Interventions" (Jul 2006)
Conferences	<p>33rd Annual Meeting of the North American Primary Care Research Group, Oct 2005</p> <p>10th Annual Scientific Symposium of the University of Rochester James P. Wilmot Cancer Center, Nov 2006</p> <p>The Annual Meeting of the Society of Behavioral Medicine, Mar 2006</p> <p>39th Society of Teachers of Family Medicine Annual Spring Conference, Apr 2006</p> <p>Annual Meeting of the American Society of Clinical Oncology, Jun 2006</p> <p>The Multinational Association of Supportive Care in Cancer Annual Meeting, Jun 2006</p> <p>European Association for Communication in Healthcare Annual Conference, Sep 2006</p> <p>American Public Health Association, Nov 2006</p> <p>Active Living Research, Feb 2007</p> <p>Annual Meeting of the American Society of Preventive Oncology, Mar 2007</p> <p>The Annual Meeting of the Society of Behavioral Medicine, Mar 2007</p> <p>American Cancer Society Annual Meeting: ("Bridging the Health Care Divide-Research and Programs to Eliminate Cancer Disparities"), Apr 2007</p> <p>NYS Conference on language access to healthcare for immigrant women, Apr 2007</p> <p>Society of Teachers of Family Medicine Annual Spring Conference, Apr 2007</p>
Other grant participation	<p>Avon Foundation</p> <p>Ronald Epstein (PI)</p> <p>7/1/2007-6/30/2008</p> <p>\$22,709 (DC Yr. 1)</p> <p>Title: Measuring What Navigators Do: Task and Social Network Analysis</p> <p>Role on Project: Co-Investigator</p>
Awards or	National Institutes of Health/National Center on Minority Health & Health Disparities 9/1/2006-8/30/2010

<p>Special Recognition (includes special committee assignments)</p>	<p>Title: Loan Repayment Program Total amount funded: \$140,640</p> <p>Participant, NIH OBSSR Summer Institute “Design and Conduct of Randomized Clinical Trials for Behavioral Interventions” (2006)</p> <p>Participant, Pittsburgh Mind-Body Institute “Eating, Sleeping, and Physical Activity” (2005)</p> <p>Grant Generating Project Fellow (2005-2006)</p> <p>American Academy of Cancer Research (AACR) “Frontiers in Cancer Prevention” Scholarship (2006)</p> <p>Study Section/ Review Committee Activities, National Center for Minority Health and Health Disparities, P60/Research Centers of Excellence</p> <p>Society of Behavioral Medicine Co-Chair, Evidence-Based Behavioral Medicine Special Interest Group, 2007-present</p>
<p>Pilot studies</p>	<p>(1) Direct Observation of Physical Activity Counseling in Underserved Communities Role on Project: Principal Investigator 9/1/2005-8/30/2006 Purpose: The aims of this project were to 1) directly examine clinician counseling and discussion about physical activity (PA) habits in a primary care setting with underserved patients; 2) to assess the extent to which PA counseling in this setting incorporates elements of the 5A model (“Ask, Advise, Assist, Agree, Arrange”)</p> <p>(2) Physical Activity Counseling: The Patient’s Perspective (sub-project of (1) above) Role on Project: Principal Investigator 9/1/05-8/30/2006 Purpose: The aim of this study was to understand the patient’s recall of physical activity counseling and its association with satisfaction, attempt to change behavior, and assess feasibility of office-based interventions to improve physical activity</p> <p>(3) Intervention to Promote Physical Activity Counseling in Underserved Populations Role of Project: Principal Investigator 7/9/2006-8/31/2007 Purpose: This two-arm randomized clinical trial tests the effect of and intervention consisting of clinician communication linked to a community exercise program on physical activity in underserved primary care populations</p>
<p>Journal Peer Review Activities</p>	<p>Families, Systems, and Health</p> <p>Patient Education and Counseling</p> <p>American Family Physician</p> <p>Journal of the American Board of Family Practice</p>
<p>Grants Submitted</p>	<p>1) NCI K-07 Cancer Prevention Control, Behavioral and Population Sciences Career Development Award, June 2006 “A Communication Intervention to Promote Physical Activity” Estimated Total Cost: \$663,997 (will resubmit July 2007)</p> <p>2) American Cancer Society Mentored Research Scholar Grant in Applied and Clinical Research-Psychosocial and Behavioral Cancer Research Targeted at Poor and Underserved Populations, Oct 2006 “A Communication Intervention to Promote Physical Activity” Estimated Total Cost: \$728,913 (will resubmit Oct 2007)</p> <p>3) University of Rochester Clinical and Translational Sciences Institute Career Development Program (K-12) in Clinical/Translational Research</p>

	<p>“A Communication Intervention to Promote Physical Activity” Amount of Award: 0.75 FTE salary support plus pilot funds for up to five years</p>
Grants – Planned New Submissions	<p>Robert Wood Johnson Foundation Physician Faculty Scholars Program, Aug 2007 “A Communication Intervention to Promote Physical Activity” Amount of Award: \$300,000</p> <p>AAFP Foundation Joint Grant Awards Program “A Communication Intervention to Promote Physical Activity” Amount of Award: \$30,000</p>

Colmar Figueroa-Moseley, PhD, MPH



Dr. Colmar Figueroa-Moseley did his undergraduate work at Carnegie Mellon University and received voice training as a Baritone from renowned Metropolitan Opera Mezzo-Soprano Mimi Lerner and Robert Page, former director of the Cleveland Philharmonic Choral Section and conductor for the Mendelssohn Choir who have collectively put out more than 30 classical CDs. He then obtained a doctoral degree in Developmental Psychology from University of Alabama, Birmingham, and took a position as an Epidemic Intelligence Service Officer at the Centers for Disease Control and Prevention Office on Smoking and Health. Prior to entering our program he directed the Office of Diversity in Clinical Research at the Mayo Clinic. He is a married father of two whose research applies Self-Determination Theory (SDT) to reduce racial/ethnic cancer health disparities. According to Self-Determination Theory, empowerment arises when a person has relatedness to the provider, a sense of autonomous motivation, and perceived competence in changing health behaviors.

Dr. Figueroa-Moseley was awarded a minority research supplement (\$327,678) to study a SDT theory model of recruitment of minorities to randomized cancer control clinical trials, specifically to: (1) investigate barriers to CCOP recruitment and retention, with an emphasis on recruiting minority and underserved potential subjects; (2) identify culturally sensitive process and outcome measures that could be of use in CCOP studies; and (3) pilot an SDT intervention within 3 Minority-Based CCOPs and 2 Non-Minority CCOPs in an effort to increase both recruitment and retention in cancer control clinical trials. To date he has conducted four focus groups of minority patients at geographically diverse CCOP sites as part of data gathering. Dr. Figueroa-Moseley’s research mentor is Dr. Geoffrey Williams, a leader in the field of SDT and health. Their current work together in SDT and smoking also shows that the SDT intervention may represent a very effective intervention in reducing smoking among Blacks.

They are working together on submitting an R21 investigating further the application of the SDT smoking intervention specifically to Black smokers.

Colmar Figueroa-Moseley, PhD	
Publications	<p>(see Section E. Trainee Publications for complete list of publications and abstracts)</p> <p>3 published manuscripts; 2 as primary author</p> <p>3 manuscripts in review; 1 as primary author</p> <p>5 manuscripts in press; 1 as primary author</p> <p>1 book chapter in press (secondary author)</p>
Published Abstracts	11 abstracts, 3 as primary author
Posters	<p>Morrow G, Ryan J, Kohli S, Jean-Pierre P, Carroll J, Figueroa-Moseley C, Mustian K, Hofman M. (June 2006). Modafinil (Provigil) for persistent post-treatment fatigue: An open label study of 82 women with breast cancer. Multinational Association of Supportive Care in Cancer. <u>Journal of Supportive Oncology</u></p> <p>Figueroa-Moseley C, Williams GC, Morrow GR, Jean-Pierre P, Carroll J, Ryan J. (2006) Empowered to stop smoking: The impact of a SDT smoking cessation intervention on economically disadvantaged whites and blacks. Annual Meeting of the <i>American Society of Clinical Oncology</i>. <u>The Journal of Clinical Oncology</u></p> <p>Jean-Pierre P, Roscoe JA, Morrow G, Hofman M, Fiscella K, Griggs J, Carroll J, Figueroa-Moseley C, Mattar BI, Wade J (June 2006). Cancer patients' reported illness and treatment related concerns, perception of availability and use of available information: The influence of socio-demographics. Annual Meeting of the <i>American Society of Clinical Oncology</i>. <u>The Journal of Clinical Oncology</u></p> <p>Figueroa-Moseley CD, Williams G, Morrow G, Jean-Pierre P. (March 2006). Autonomous motivation, perceived competence, and smoking cessation among ethnically diverse adults. <i>Annual Meeting of the Society of Behavioral Medicine, Annals of Behavioral Medicine</i></p> <p>Figueroa-Moseley C, Abramson J, Williams G. (2007) Latino Substance Abuse: Findings from the Hispanic Health and Nutrition Examination Survey. <i>The Annual Meeting of the Society of Behavioral Medicine, Annals of Behavioral Medicine.</i></p> <p>Carroll JK, Epstein RM, Jean-Pierre P, Fiscella K, Figueroa-Moseley C, Morrow GM. (2007) Clinician-patient communication about physical activity in underserved populations. <i>The Annual Meeting of the Society of Behavioral Medicine, Annals of Behavioral Medicine.</i></p> <p>Jean-Pierre P, Fiscella K, Cunnigen D, Marc L, Carroll J, Figueroa-Moseley C, Morrow G.(2007) Influence of acculturation and ethnicity on causal attributions about psychopathology and help-seeking recommendations: A multiethnic study. <i>The Annual Meeting of the Society of Behavioral Medicine, Annals of Behavioral Medicine.</i></p> <p>Figueroa-Moseley C, Abramson J, Williams G (2007). College Women: History of childhood abuse and its relationship to smoking. <i>The Annual Meeting of the Society of Behavioral Medicine, Annals of Behavioral Medicine.</i></p>
Conferences	<p>Multinational Association of Supportive Care in Cancer (2006)</p> <p>Society of Behavioral Medicine (2006 & 2007)</p> <p>American Society of Clinical Oncology (2006 & 2007)</p> <p>American Society of Preventive Oncology (2006 & 2007)</p> <p>American Cancer Society Health Disparities Conference (2007)</p>

Awards or Special Recognition (including committees)	NIH Health Disparities Loan Repayment National Surgical Adjuvant Breast and Bowel Project (NSABP) Diversity Strategic Planning Committee Member
Grants	Figueroa-Moseley, C, Morrow, G. (August 2006). "University of Rochester—CCOP Research Base: Research Supplements to Promote Diversity in Health Related Research." National Institutes of Health, National Cancer Institute, \$327,678.
Peer Reviewer of Journals	American Journal of Public Health Addictive Behaviors Hispanic Journal of Behavioral Sciences Contemporary Clinical Trials

Sadhna Kohli, PhD, MPH



Dr. Sadhna Kohli, a married mother of two girls, came to us with a PhD in pharmacology from the University of Aston in Birmingham, UK, work in the research and development department of Searle Pharmaceuticals and a Post-Doc Research Fellowship in the Dept. of Hematology/ Oncology, University of Arkansas for Medical Sciences, Little Rock, AR.

Among her past non-academic activities were trekking in Tibet and bathing in the Ganges River. During her second year in the program she was awarded a \$300,000, three year independent investigator grant from the Susan G. Komen Foundation for her research in cognitive impairment: *A Longitudinal Study of Alterations in Cognitive Function and Brain Metabolites among Women Receiving Chemotherapy for Primary Breast Cancer*. She is assessing 60 newly

diagnosed breast cancer patients using a computer presented program used by us in previous work. Upon completion of the program and receiving her MPH in May, she took a supported research position in the Department of Medicine's Center for Future Health at the University of Rochester and subsequently was recruited by the Mayo Clinic Comprehensive Cancer Center as an Assistant Professor in the Department of Medical Oncology.

Sadhna Kohli, PhD	
Publications	(see Section E. Trainee Publications for complete list of publications and abstracts) 4 published manuscripts; 2 as primary author 3 manuscripts in press 1 manuscript in review (primary author) 8 abstracts; 3 as primary author
Oral Presentations	Self-reported cognitive impairment in cancer patients: a URCC CCOP longitudinal study of 595 patients. Oral presentation as part of the Scientific Program in the Cognitive Impairment in Cancer Survivors Clinical Science Symposium. American Society of Clinical Oncology (ASCO), Atlanta, GA: June 2006 The Cognitive Effects of Modafinil (Provigil®) in Breast Cancer Survivors: A Randomized Clinical Trial. Oral presentation as part of the Patient and Survivor Care session. American Society of Clinical Oncology (ASCO), Chicago, IL: June 2007
Posters	Kohli S , Griggs JJ, Mustian KM, Jeanne-Pierre P, JA Roscoe, Morrow GR. Cancer Patients' Self-Report of Cognitive Impairment. 10th Annual Scientific Symposium of the University of Rochester James P. Wilmot Cancer Center November, 2005. Kohli S , Griggs JJ, Bole C, Roscoe JA, Kirshner J, Lord R, Gross H, Morrow GR. Frequency and Severity of Self-reported Problems with Memory and Concentration in Patients Receiving Treatment for Cancer. Multinational Association of Supportive Care in Cancer (MASCC), Toronto, CA: June 2006. Roscoe J.A., Mustian K.M., Morrow G.R., Hickok J.T., Giguere J.K., Colman L.K., Gross H., Shelke A.R., Kohli S. Bi-Directional Relationship Between Chemotherapy-Related Nausea Severity and QOL. Poster presentation at the American Psychosocial Oncology Society (APOS), 2006 Ranson S, Morrow G.R, Kohli S , Jean-Pierre P, Griggs, JJ, Mustian K. Correlations between decision-making and information gathering in 1015 cancer patients. 10th Annual Scientific Symposium of the University of Rochester James P. Wilmot Cancer Center November, 2005. Kohli S , Fisher SG, Mapstone MM, Jean-Pierre P, Roscoe JA, Morrow GR. Cognitive effects of short-term selective serotonin reuptake inhibitor (SSRI) treatment in breast cancer patients receiving chemotherapy. 11th Annual Scientific Symposium of the University of Rochester James P. Wilmot Cancer Center November, 2006. Kohli S , Fisher SG, Mapstone MM, Jean-Pierre P, Roscoe JA and Morrow GR. Effects of Paxil® on cognitive function in breast cancer patients receiving chemotherapy: A randomized, double-blind placebo controlled trial. Society of Behavioral Medicine (SBM), 2007. Roscoe JA, Morrow GR, Palesh O, Kohli S , Mustian KM. Modafinil (Provigil®) for Sleep disturbance and fatigue in cancer survivors. Society of Behavioral Medicine (SBM), 2007.
Workshops	NCI Cancer Survivorship Grant Writing Workshop, Washington DC; Oct 2006 Cognitive Impairment Workshop, Venice, Italy; Oct 2006 SIO Grant Writing Workshop, Boston MA; Nov 2006
Conferences	ASPO 2006 Washington DC SBM 2006 San Francisco, CA ASCO 2006 Atlanta, GA MASCC 2006 Toronto, Canada

	James P. Wilmot Cancer Center Symposium 2005 SBM 2007 Washington, DC ASCO 2007, Chicago, IL James P. Wilmot Cancer Center Symposium 2006
Awards or Special Recognition	Carol and John Bennett Award for Most Outstanding American Society of Clinical Oncology (ASCO) 2006 Abstract. American Society of Preventive Oncology (ASPO) 2007 New Investigator Award American Society of Clinical Oncology (ASCO) 2007 Merit Award
Grants	"A Longitudinal Study of Alterations in Cognitive Function and Brain Metabolites among Women Receiving Chemotherapy for Primary Breast Cancer". Susan G. Komen Foundation \$300,000 05/01/2007-04/30/2010
Ad Hoc Journal Reviewer	2007 Clinical Investigation
Pilot studies	"A Feasibility Study of Magnetic Resonance Spectroscopy (MRS) to Assess Cognitive Function Following Cancer Treatment"
Submitted Grant applications	Approved Letter of Intent for Lance Armstrong Foundation Grant Proposal "A Feasibility Study to Assess Cognitive Function Following Cancer Treatment" University of Rochester Clinical and Translational Sciences Institute Career Development Program (K-12) in Clinical/Translational Research " <i>Cancer-therapy Related Cognitive Changes in Breast Cancer Survivors</i> " (pending)



Julie Ryan, PhD, MPH

Dr. Julie Ryan's doctoral degree is in Cellular and Molecular Pathology from the University of North Carolina, Chapel Hill. Her undergraduate work was done at the University of Chicago and she did graduate work at NIH prior to her doctorate. Dr. Ryan successfully completed her Masters of Public Health in Clinical Investigation in May 2007. Currently, she is an Assistant Professor of Dermatology with a secondary appointment—and salary support—from the Department of Radiation Oncology (Her program mentor was Alice Pentland, MD, chair of Dermatology and Dr. Paul Okunieff, chair of Radiation Oncology was on her committee) Dr. Ryan was appointed Study Chair on a current CCOP clinical protocol testing the effectiveness of ginger for nausea

caused by chemotherapy. She has pilot grant funding (\$50,000) from the Department of Radiation Oncology for her work with Curcumin and its potential radio protective function in skin that will form the basis for a K-08 application to be submitted in the summer of 2008. Her translational research spans from the bench to the bedside and she is among the few –if not the only- faculty members to be the PI of both an approved animal study and approved human study protocol at the same time.

Julie Ryan, PhD	
Publications	(see Section E. Trainee Publications for complete list of publications and abstracts) 4 published manuscripts; 1 as primary author 3 manuscripts in press; 1 as primary author 4 manuscripts in review; 3 as primary author
Published Abstracts	3 abstracts, two as primary author
Presentations	“Curcumin For Radiation-Induced Dermatitis” at Annual CCOP meeting, Rochester, NY, September 2006. “Curcumin, Radiation, and Breast Cancer: From Spice Cabinet to Clinic” at James P. Wilmot Cancer Center Annual Research Symposium, November 2006.
Posters	Mustian K, Ryan JL , Jean-Pierre P, Morrow GR, Williams J, Moynihan J, Griggs J, Roscoe J. Immune function, cancer-related fatigue, and physical activity among breast cancer patients receiving chemotherapy. James P. Wilmot Cancer Center Annual Research Symposium, November 2005. Ryan JL , Liu W, Spencer C, Coleman WB, Okunieff P, Morrow GR, Pentland AP. Curcumin with radiation inhibits survival of human breast cancer and murine mammary tumors. 7 th Joint Conference for AACR and JCA “In the Forefront of Basic and Translational Cancer Research, Waikoloa, HI, January 21-25, 2007.
Workshops	16 th Annual Special Session of NCI –funded Grantees, Trainees and Fellows in Cancer Prevention, Control, Behavioral, and Population Sciences, Bethesda, MD, February 2006. Society for Integrative Oncology, Pre-conference Workshop Strategies for Success: How to Write a Grant in Cancer CAM, Boston, MA November 2006. 17 th Annual Special Session of NCI –funded Grantees, Trainees and Fellows in Cancer Prevention, Control, Behavioral, and Population Sciences, Houston, TX, March 2007.
Conferences	9 th International Conference on Eicosanoids and Other Bioactive Lipids in Cancer, Inflammation, and Related Disease, San Francisco, CA, September 2005. Society of Behavioral Medicine, Annual Meeting, San Francisco, CA, March 22-25, 2006. Society of Investigative Dermatology, Annual Meeting, Philadelphia, PA, May 3-6, 2006. American Society of Clinical Oncology (ASCO), Annual Meeting, Atlanta, GA, June 2-6, 2006. Multinational Association for Supportive Care in Cancer (MASCC), Annual Meeting, Toronto, Ontario, 7 th Joint Conference for AACR and JCA “In the Forefront of Basic and Translational Cancer Research, Waikoloa, HI, January 21-25, 2007. American Society of Preventive Oncology, 31 st Annual Meeting, Houston, TX, March 2-

	4, 2007.
Pilot studies	<p>University Committee of Animal Research (UCAR) protocol (#2005-249): <i>“Role of Arachidonic Acid Metabolic Pathway in Radiation-Induced Dermatitis and Fibrosis”</i> (Research still in progress)</p> <p>Clinical Protocol: <i>“Curcumin For Radiation-Induced Dermatitis in Breast Cancer Patients”</i></p> <ul style="list-style-type: none"> • FDA IND approval (IND# 75,444) to use Curcumin C3 Complex (Sabinsa Corporation) to treat radiation-induced dermatitis in breast cancer patients. • GCRC approval (#1170) • IRB approval still pending (due to “IND clinical hold” situation with the FDA, even though the study had not been implemented after IND approval).

CURRENT TRAINEES: SECOND YEAR

Pascal Jean-Pierre, PhD



Dr. Pascal Jean-Pierre is a married father of three girls who was born in Haiti. A flute player since the age of six, he played the oboe in a philharmonic orchestra as a teen. Following undergraduate work at Brooklyn College of the City University of New York he received a Ph.D. in Clinical Psychology from the University of Rhode Island, the same program that Dr. Morrow had completed a “few” years earlier. While in New York he was an Emergency Medical Technician (EMT-D) & Communication Specialist with the New York City Fire Department.

His program application showed no prior experience in cancer control research, and, as a new Ph.D., he had only a few manuscripts in preparation and no peer-reviewed publications. We felt this lack of research preparation would hinder his progress towards a successful completion of an independent grant submission in two years. However, everyone who interviewed him agreed that he had exceptional potential for a successful career in research. He was

clearly a strong, committed and extremely motivated candidate and we did not want to lose him. We therefore offered him a three year position instead of the regular two year program to help him gain more experience in cancer control research and increase his publications. Dr. Jean-Pierre’s current research interests include management of cancer and cancer treatment-related side effects, disparities in cancer-related care, and methodologies and assessments in biomedical research. He is piloting culturally sensitive cancer control

interventions to help patients manage cancer-related side effects, especially prostate cancer-related symptoms such as urinary incontinence and erectile and sexual dysfunctions to support a K-07 application to be submitted in the fall of 2008. Dr. Jean-Pierre has been working with Dr. Kevin Fiscella, from the Department of Family Medicine, on an NCI-sponsored Patient Navigator Research Program (PNRP). Under a newly awarded Minority Research Supplement he is leading the development and psychometric analysis of a Patient Satisfaction with Cancer Care measure and a Satisfaction with Navigation Measure that are currently being used across all NCI PNRP sites.

Pascal Jean-Pierre, PhD	
Publications	(see Section E. Trainee Publications for complete list of publications and abstracts) 3 published manuscripts; 1 as primary author 5 manuscripts in press; 1 as primary author 3 manuscripts in review; 2 as primary author
Published Abstracts	22 abstracts, 4 as primary author
Keynote Speaker	Jean-Pierre P. (2007). Disparities in Mental Health. Haitian-American Psychiatric Association, Annual Meeting. Long Island, New York.
Oral Presentations	Jean-Pierre P , Morrow GR, Fiscella K, Epstein R, Carroll J, Figueroa-Moseley C, Lord R, Gross H, Rothe K. <i>Understanding Race-based Cancer Health Information and Communication Disparities: A URCC CCOP Research Base Study.</i> (Presented at the American Cancer Society's Bridging the Health Care Divide Research and Programs to Eliminate Cancer Disparities conference, New Orleans, April 18-20, 2007). Jean-Pierre P , Fiscella K, Cunnigen D, Marc L, Carroll J, Figueroa-Moseley C, Morrow GR. (2007). <i>Influence of acculturation and ethnicity on causal attributions about psychopathology and help seeking recommendations: A multiethnic study.</i> (Accepted for oral presentation at the 2007 annual meeting of the Society for Behavioral Medicine, Washington, DC).
Posters	Jean-Pierre P , Roscoe JA, Morrow GR, Carroll J, Figueroa-Moseley C, Kuebler P, Banerjee TK, Kirshner JJ. Race-based concerns over understanding cancer diagnosis and treatment plan: A URCC CCOP study. (Presented at the 2006 NIH Conference on Understanding and Reducing Disparities in Health: Behavioral and Social Sciences Research Contributions. Bethesda, MD). Morrow GR, Ryan JL, Kohli S, Jean-Pierre P , Carroll J, Figueroa-Moseley C, Mustian K, Hofman M. Modafinil (Provigil®) for persistent post-treatment fatigue: An open label study of 82 women with breast cancer. (Presented at the 2006 Annual Conference of the Multinational Association of Supportive Care in Cancer. Toronto, Canada). Jean-Pierre P , Roscoe JA, Morrow GR, Kohli S, Carroll J, Khanna R, Jacobs AD, Issell B. Paroxetine hydrochloride (Paxil ®) does not significantly reduce treatment-related memory problems for cancer patients: A URCC CCOP study. (Presented at the 2006 Annual Conference of the Multinational Association of Supportive Care in Cancer. Toronto, Canada). Jean-Pierre P. (2006). Race-based disparities in cancer control and prevention: A roadmap for social justice. (Cancer Prevention & Research Center, University of Rhode Island, Kingston, Rhode Island). Jean-Pierre P , Roscoe JA, Morrow GR, Figueroa-Moseley C, Wade JL, Khanna R, Fishkin E. Cancer patient age and race significantly predict concerns over

understanding their diagnosis and treatment plan. (Presented at the Society of Behavioral Medicine, 2006 Conference).

Jean-Pierre P, Morokoff P, Harlow L, Morrow GR, Roscoe JA. Influence of beliefs about illness etiology, religious orientation and acculturation on individuals' attitude towards seeking professional help. (Presented at the Society of Behavioral Medicine, 2006 Conference, San Francisco, CA).

Jean-Pierre P, Roscoe JA, Morrow GR, Hofman M, Fiscella K, Griggs J, Carroll J, Figueroa-Moseley C, Mattar BI, Wade JL. Cancer patients' illness and treatment-related concerns, and perceived information availability and utilization: Roles of socio-demographics. (Presented at the American Society of Clinical Oncology 2006 Conference, Atlanta, GA)

Figueroa-Moseley C, Williams G, Morrow GR, **Jean-Pierre P** Perceived competence, autonomous motivation, and smoking among ethnically diverse adults. (Presented at the Society of Behavioral Medicine 2006 Conference, San Francisco, CA).

Jean-Pierre P, Roscoe JA, Morrow GR, Figueroa-Moseley C. Understanding socio-demographic predictors of patients' concerns over understanding their diagnosis and treatment plan: A URCC CCOP Research Base study. (Presented at the 10th Annual Scientific Symposium of the University of Rochester James P. Wilmot Cancer Center on November 10, 2005).

Hofman M, **Jean-Pierre P**, Roscoe JA, Morrow GR. (2005) Relationship of patients' expectations and occurrence of cancer treatment side effects: A URCC CCOP Study. (Presented at the 10th Annual Scientific Symposium of the University of Rochester, James P. Wilmot Cancer Center).

Mustian K, Ryan J, **Jean-Pierre P**, Morrow GR, Williams J, Moynihan J, Griggs J, Roscoe JA. (2005). Immune function, cancer-related fatigue, and physical activity among breast cancer patients receiving chemotherapy. (Presented at the 10th Annual Scientific Symposium of the University of Rochester, James P. Wilmot Cancer).

Figueroa-Moseley C, Williams G, Morrow GR, **Jean-Pierre P**. (2005). Perceived competence, autonomous motivation, and smoking among ethnically diverse adults. (Presented at the 10th Annual Scientific Symposium of the University of Rochester, James P. Wilmot Cancer Center).

Jean-Pierre P. (2005). Ethno-cultural and psychosocial determinants of help-seeking attitude in a multiethnic sample. (Society of Multivariate Experimental Psychology, Minority conference at Howard University).

Ranson S, Morrow GR, Kohli S, **Jean-Pierre P**, Griggs J, Mustian K. (2005) Correlations between decision-making and information gathering in 1015 cancer patients. (Presented at the 10th Annual Scientific Symposium of the University of Rochester Cancer Center).

Jean-Pierre P, Harris SM. Ethnicity and masculinity: Deconstructing Blackness. (Paper presented at the 10th Annual Conference of the American Men's Studies Association in Nashville, Tennessee on March 23, 2002).

Jean-Pierre P, Harris SM. (2002). Spirituality and European approaches to healing: Integrating psycho-cultural worldviews. (Paper presented at the National Association of African American Studies' Annual Conference in Houston, TX).

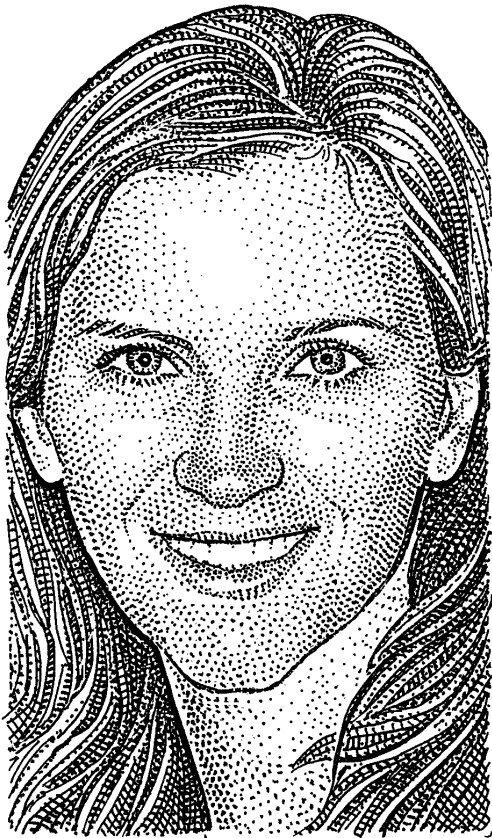
Jean-Pierre P, Harris SM. Attributions and help seeking among Black immigrants: Research implications for mental health utilization. (Paper presented at the Annual Conference of the Association of Social & Behavioral Scientists, Greensboro, NC, March 2002).

Jean-Pierre P, Morrow GR, Stevenson J, Roscoe JA, Kohli S, Vinciguerra V, Moore

	<p>DF, Huber J. (2007). Structural and reliability analyses of a brief patient report measure of memory problems related to cancer treatment. (Accepted for presentation at the Annual Meeting of the American Society of Preventive Oncology, Houston, TX)</p> <p>Jean-Pierre P, Morrow GR, Stevenson J, Roscoe JA, Kohli S, Vinciguerra V, Moore DF, Huber J. (2007). Development and validation of a brief measure of treatment-related memory problems for cancer patients. (Accepted for presentation at the 2007 annual meeting of the Society for Behavioral Medicine, Washington, DC).</p>
Workshops	<p>2006 - National Cancer Institute – Second Biennial Career Development Workshop to Increase diversity in Research Funding. Palm Desert, CA</p> <p>2006 - National Cancer Institute/Office of Behavioral & Social Science Research Third Annual Advanced Training Institute on Behavior Health Theory University of Wisconsin. Madison, Wisconsin</p> <p>2007 - Seventh annual NIH Summer Institute on the Design and Conduct of Randomized Clinical Trials Involving Behavioral Interventions</p> <p>2007 - NCI/NIH 2nd Annual Minority Investigators Workshop on Behavioral Methodologies. Washington, D.C.</p>
Conferences	<p>2006 - American Society of Preventive Oncology, Bethesda</p> <p>2006 - Society of Behavioral Medicine, San Francisco, CA</p> <p>2006 - American Society of Clinical Oncology, Atlanta, GA</p> <p>2006 - NIH Conference on Understanding and Reducing Disparities in Health: Behavioral and Social Sciences Research Contributions. Bethesda, MD.</p> <p>2006 - National Cancer Institute/Office of Behavioral & Social Science Research Third Annual Advanced Training Institute on Behavior Health Theory University of Wisconsin. Madison, Wisconsin</p> <p>2007 - American Society of Preventive Oncology, Houston, TX</p> <p>2007 - Society of Behavioral Medicine, Washington, CA</p> <p>2007 - American Society of Clinical Oncology, Chicago, Illinois</p> <p>2007 - American Psychological Association, San Francisco, CA</p> <p>2007 - American Evaluation Association</p>
Awards and Honors	<p>2006 - MASCC - Young Investigator Award, Multinational Association of Supportive Care in Cancer (MASCC), Toronto, Canada</p> <p>2006 - ACS/AACR Scholarship to attend the 2006 AACR Frontiers in Cancer Prevention Research meeting in Boston</p> <p>2006 – 2008 - National Institutes of Health – Loan Repayment for Health Disparities Research. Bethesda, Maryland</p>
Pilot studies in progress	<p>Modafinil and Behavioral intervention to control prostatectomy-related side effects among prostate cancer patients receiving hormone therapy.</p> <p>Pre surgical behavioral and psychological interventions to control prostatectomy-related side effects.</p>
Journal Reviewer	Patient Education and Counseling (PEC)
Mini-Sabbatical	<p>(July 2006) University of Rhode Island, Two-weeks with Dr. John Stevenson. Worked on initial draft of Minority Supplement and drafts for manuscripts.</p> <p>(May 2007) University of Miami (Drs. F. Penedo; M. Llabre). Planned to work on</p>

	psycho-oncology interventions and healthcare disparities.
Grant Submitted	Minority Supplement to the University of Rochester Patient Navigator Research Program
Planned Grant Submissions	Intervention for Access to Reliable Cancer Care: Navigation Model Development (K-Award application to be submitted to NCI& ACS).
Community Service Activities	Member of the Advisory Group Committee, and the Measurement and Data Management & Analysis Committee for the NCI-sponsored Patient Navigator Research Program in Rochester, NY (Kevin Fiscella, MD, MPH (PI)). Member Health Research Committee Board for the Haiti Outreach-Pwoje Espwa (H.O.P.E.), a non-profit organization based in Rochester, New York, which has established and continue to run a healthcare clinic in an impoverished area of a northern province of Haiti.

Oxana Palesh. PhD



Dr. Palesh currently has a dual appointment in the Departments of Psychiatry and Radiation Oncology. While a grade-school student in Russia, she learned to field strip and clean a Kalashnikov rifle—a skill of dubious value in her profession of Clinical Psychology, except that she may be the only Psychologist in America with that particular skill set. Following an undergraduate degree at Brigham Young University, she earned both a MS and doctorate from the California School of Professional Psychology and applied for admission to our program while a post doctoral research fellow of David Spiegel’s at Stanford University. She is mentored by Michael Perlis, PhD, an expert in sleep disruption. In a reanalysis of longitudinal data from 823 patients in a randomized clinical trial conducted in the CCOP network, she identified insomnia as a prevalent and important clinical issue in cancer patients. Based on these data and pilot data supporting the effectiveness of both cognitive behavioral approaches and the drug Modafinil in controlling insomnia, her K-07 will gather data from a 2 (behavioral treatment/no behavioral treatment) by 2

(modafinil/placebo) crossed randomized trial of 60 breast cancer patients. She is currently on track to re-submit a K07 application in March, 2008 (her first submission received a score of 198).

Oxana Palesh, PhD	
Publications	<p>(see Section E. Trainee Publications for complete list of publications and abstracts)</p> <p>5 published manuscripts; 1 as primary author</p> <p>8 manuscripts in press; 2 as primary author</p> <p>6 manuscripts in review; 2 as primary author</p>
Published Abstracts	4 abstracts, 2 as primary author
Posters	<p>Palesh O, Collie KJ, Koopman C, Perlis M, Butler LD, Carlson R, Spiegel D. (June 2007) <i>Depression, pain, and life stress predict sleep disturbance in women with metastatic breast cancer</i>. Sleep 2007. Minneapolis.</p> <p>Palesh O, Mustian M, Roscoe J, Morrow G, Perlis M, Issell B, Banerjee TK, Delmore JE. (June 2007). <i>Prevalence and severity of sleep disturbance in 596 cancer patients: A URCC CCOP study</i>. Association for Clinical Oncology (ASCO), Chicago, IL.</p> <p>Palesh O, Collie K, Batiuchok D, Tilston J, Koopman C, Perlis M, Butler LD, Carlson R, Spiegel D. (March 2007). <i>A longitudinal study of depression, pain, and stress as predictors of sleep disturbance among women with metastatic breast cancer</i>. Poster presented at the Association for Preventive Oncology (ASPO), Houston, TX.</p> <p>Palesh OG, Perlis ML, Roscoe JA, Morrow GR, Issell B, Banerjee TK, Delmore JE. (March 2007). <i>The occurrence of sleep disruption in cancer treatment and its relationship to pain, depression and fatigue: A Community Clinical Oncology Program (CCOP) study of 648 patients</i>. Poster presented at the 28th Annual Meeting for the Society of Behavioral Medicine (SBM). Washington, DC.</p> <p>Palesh O, Hofman M, Mustian KM, Morrow GR, Classen C, Spiegel D, Lord R, Flynn PJ, Banerjee T. (October 2006). <i>Comparing stress among prostate and breast cancer survivors: A URCC CCOP report</i>. Cancer Survivorship: Embracing the Future. Bethesda, Maryland.</p> <p>Palesh O, Butler L, Koopman C, Giese-Davis J, Carlson R, Spiegel D. (March 2006). <i>Trauma and disease free interval in women with metastatic breast cancer</i>. Poster presented at the 27th Annual Meeting for the Society of Behavioral Medicine (SBM). San Francisco, California.</p>
Workshops	Participant, NIH Grant Writing Workshop, Boston, October 2006
Conferences	<p>Cancer Survivorship: Embracing the Future, Washington, DC, October 2006</p> <p>10th Annual Scientific Symposium of the University of Rochester James P. Wilmot Cancer Center, Nov 2006</p> <p>The Annual Meeting for Society of Preventive Oncology, March 2007</p> <p>The Annual Meeting of the Society of Behavioral Medicine, Mar 2007</p> <p>Annual Meeting of the American Society of Clinical Oncology, Jun 2007</p> <p>Sleep 2007, June 2007</p>

Other grant participation	Title: Sleep, Circadian Hormonal Dysregulation, and Breast Cancer Survival Source: National Cancer Institute (PI: David Spiegel, MD) Role: Project Consultant, Lead Writer Summary: Study sleep disruption as a prognostic factor in the progression of metastatic cancer. Dates: September 2006-June 2011
Awards or Special Recognition	Clinical Research Loan Repayment Program 9/1/2006-9/1/2007 appr. \$20,000
Journal Peer Review Activities	Biological Psychiatry Psychosomatic Medicine Journal of Psychosomatic Research Society for Behavioral Medicine—Cancer SIG service
Planned Grant New Submissions	K07 June 2007 Modafinil +/- Brief Behavioral Intervention for Prophylaxis of Insomnia in Breast Cancer R01 Fall 2007 Co-Investigator. Natural History of Insomnia.

Elizabeth Ryan, PhD



Dr. Elizabeth Ryan is a married mother of two girls with a doctoral degree in Molecular Toxicology and Environmental Medicine that was obtained after an undergraduate degree in Biology at Bowling Green State University and service in the Peace Corps in Nepal. While in our program, she had a dual appointment in the Departments of Environmental Medicine and Radiation Oncology and completed research, (*"Factors that may influence the immune response to HPV vaccination"*) in 100 adolescent females at a local pediatric clinic. Additionally, Dr. Ryan completed in vitro studies of Cox-2 in antibody responses to HPV vaccination and was funded locally (\$50,000) for a pilot study investigating the effects of lead exposure on antibody responses to HPV vaccination in preadolescent females. Data from the study *Attenuation of antibody responses to HPV vaccination by lead exposure* is the basis for a K08 Mentored Clinical Scientist Development Award to be submitted to the National Institute of Environmental Health Sciences (NIEHS). Additionally, Dr. Ryan authored three manuscripts in review, one in press, and five abstracts, all of which were poster presentations at national meetings (International

Human papillomavirus Conference, Immunological Interventions in Human Disease, Keystone Symposium, American Society of Preventive Oncology, American Society of Clinical Oncology, and the James P. Wilmot Cancer Center Annual Research Symposium. She was able to complete only the first year of the program (and a planned masters in biostatistics degree) because her husband took an academic position out of state at the beginning of what would have been her second year. She is currently a Consultant to Oak Ridge Associated Universities in Human Health Toxicology and Risk Assessment while aggressively pursuing academic possibilities.

Elizabeth Ryan, PhD	
Publications	(see Section E. Trainee Publications for complete list of publications and abstracts) 5 published manuscripts; 3 as primary author 1 manuscript in press as secondary author 3 manuscripts in review; 2 as primary author
Published Abstracts	4 abstracts, all as primary author
Presentations	Orthopedic Research Society Annual Meeting (February, 2007. San Diego, CA) "Overview of the Aryl Hydrocarbon Receptor and its Role in Mediating the Toxic Effects of Aromatic Hydrocarbons" "Characterization of the Aryl Hydrocarbon Receptor in Bone Cells and the Possible Implications of its Activation" American Society of Preventive Oncology (March 2007. Houston, TX) "Cyclooxygenase-2 inhibition attenuates antibody responses against human papillomavirus-like particles."
Posters	Ryan EP , CM Malboeuf, RC Rose, RP Phipps. <i>Cyclooxygenase-2 inhibition attenuates antibody responses against human papillomavirus-like particles</i> . International Human Papillomavirus Conference. September 2006, Prague, Czech Republic. Ryan EP , Rahman I, and RP Phipps. <i>SC-58125 diminishes intracellular glutathione and induces reactive oxygen species by a Cox-2 independent mechanism in malignant B lineage cells</i> . James P. Wilmot Cancer Center Symposium. November 2006. Rochester NY Ryan EP , CM Malboeuf, RC Rose, RP Phipps. <i>Cyclooxygenase-2 inhibition attenuates antibody responses against human papillomavirus-like particles</i> . Immunological Interventions in Human Disease. Keystone Symposium, January 2007, Big Sky, Montana. Malboeuf C , D Simon, Y-E Lee, J Frelinger, E Ryan, R Rose. <i>Human papillomavirus-like particles mediate functional delivery of plasmid dna to antigen presenting cells</i> . Immunological Interventions in Human Disease. Keystone Symposium, January 2007, Big Sky, Montana
Workshops	Grant Writing Workshop November 2006 Boston, MA R25 Fellows meeting, ASPO March 2007
Conferences	International Human Papillomavirus Conference, Prague, Czech Republic Immunological Interventions in Human Disease, Keystone Symposium, January 2007, Big Sky, Montana Orthopedic Research Society Annual Meeting, February 2007, San Diego, CA. American Society of Preventive Oncology, March 2007, Houston TX

	American Society of Clinical Oncology, June 2007, Chicago, IL
Awards	2006 Harold Hodge Award, University of Rochester, Department of Environmental Medicine
Pilot studies	Influence of NSAID use on antibody responses to the Human Papillomavirus (HPV) vaccine Modulation of antibody responses to HPV vaccination with Gardasil by lead exposure

CURRENT TRAINEES: FIRST YEAR

Luke J. Peppone, PhD



Following receipt of an undergraduate degree from the University of Rochester, Dr. Luke Peppone was a Research Intern at Central Middlesex Hospital in London as well as a Research Assistant, Department of Dermatology, University of Rochester. His doctoral degree is in Epidemiology and Community Health from the University of Buffalo. He currently has an appointment in the Department of Radiation Oncology and a joint appointment in the department of Orthopedics is in progress. Dr. Peppone joined our program with the goal of deepening his expertise in nutritional factors and how they might increase the efficacy of cancer treatment while minimizing treatment-related side-effects. He is currently developing protocols for pilot studies to investigate the effects of vitamin D and its analogs on bone health in estrogen receptor positive breast cancer. *“The Effect of Vitamin D and Calcitriol Supplementation in Postmenopausal ER(+) Breast Cancer Patients on Bone Health: A Pilot Study.”* will be the basis for a K07 application to be submitted to NCI in June 2008. Additionally, Dr. Peppone is examining the effects of a Tai Chi exercise intervention on bone health among breast cancer survivors in collaboration

with Dr. Mustian through secondary laboratory analyses of blood samples from a previous study of hers.

Luke Peppone, PhD	
Mentor	Randy Rosier, MD PhD, Department of Orthopedics
Publications	1 published manuscripts; 0 as primary author 1 manuscript in press as primary author 2 manuscripts in review; 2 as primary author
Published Abstracts	11 abstracts, 8 as primary author

Supriya Gupta Mohile, MD, MS



Dr. Supriya Mohile is a married, physician mother of two, with appointments as an assistant research professor in the Division of Hematology/Oncology and the Department of Radiation Oncology. After obtaining an undergraduate degree in Biology from Penn State University, she completed medical school at Thomas Jefferson and completed a MS in Health Outcomes Research from the University of Chicago.

Dr. Mohile is a geriatric oncologist interested in studying the patterns of care and health outcomes of vulnerable older adults with cancer. Prior to entering the program, she was cited by ASCO with an award of research merit and a young investigator award. Having earned her M.S. prior to beginning this program, her specialized program is focused on enhancing her clinical trials expertise through the Clinical and Translational Science Institute-sponsored Skill-Building Workshops as well as direct tutorials from Dr. Morrow. She is also concentrating her efforts on publishing more and developing her research. Having just joined the University of Rochester in July and the R25 Program in

September, she is beginning to start her projects, including *“Longitudinal Evaluation of Outcomes of Older Prostate Cancer Patients who Undergo Androgen Ablation Therapy”* and *“Patterns of Care of Vulnerable Older Medicare Beneficiaries.”* The goal of this pilot work in 140 elderly prostate cancer patients will be to develop measures and gain preliminary data in order to ultimately conduct trials to improve decision-making and outcomes of vulnerable elders with cancer—a focus of her recently submitted K award to the Beeson program of the Institute of Aging titled *“Vulnerable and Frail Elders with Cancer: Patterns of Care and Outcomes”*.

Supriya Mohile, MD

Publications	5 published manuscripts, 3 as primary author 2 manuscripts in press; 2 as primary author 3 manuscripts in review; 3 as primary author
Abstracts	4 abstracts, 3 as primary author

Jason Purnell, PhD



Following undergraduate work in government and philosophy at Harvard University where he was on the ‘dean’s list’ for superior academic performance every semester, and a position as Director of Community Engagement for the United Way of Greater St. Louis where he planned and conducted a successful \$3 million fund drive to stabilize programs, Dr. Jason Purnell received a PhD in Counseling Psychology with an emphasis on multicultural intervention and health psychology from The Ohio State University. His research interest is developing effective community-based, culturally appropriate interventions to reduce cancer health disparities in racial and ethnic minority communities. He is a married research assistant Professor of Radiation Oncology with a joint appointment in the Department of Community and Preventive Medicine in progress. Dr. Purnell’s current pilot study of 80 underserved African Americans recruited in four inner city churches is called: “*Targeted, Direct Mail Colorectal Cancer Screening Intervention in African American Churches.*” The study will determine the feasibility of an intervention to mail colorectal cancer screening kits supplemented by a letter of encouragement and an automated telephone reminder from

church pastors as part of pilot data to support a career development application in the summer.

Jason Q. Purnell, PhD	
Mentor	Nancy Bennett, MD, Department of Medicine & Community and Preventive Medicine
Publications	1 manuscript in press as primary author 3 manuscripts in review; 2 as primary author
Abstracts	6 abstracts; 4 as primary author