



INSTALLATION INSTRUCTIONS FOR PART 95-6522B

APPLICATIONS

Dodge Ram 1500 2002-2005 Dodge Ram 2500/3500 2003-2005

(sub-dash modifications required)

95-6522B

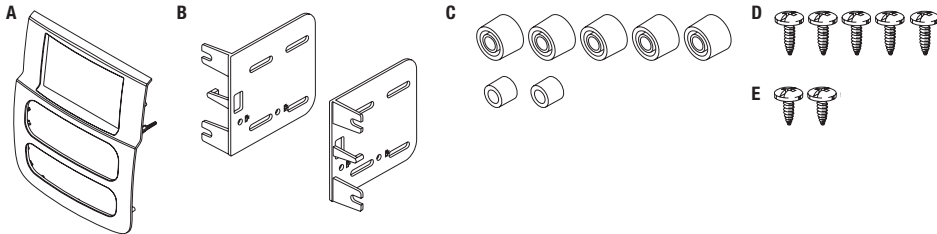


KIT FEATURES

- Double DIN radio provision
- **Painted matte black**

KIT COMPONENTS

• A) **Radio trim panel** • B) Brackets • C) Retaining caps (5 large, 2 small) • D) (5) #8 x 1/2" screws • E) (2) #8 x 3/8" screws



WIRING & ANTENNA CONNECTIONS (sold separately)

Wiring Harness: • 70-6502 • CHT0-02

Antenna Adapter: • 40-CR10

TOOLS REQUIRED

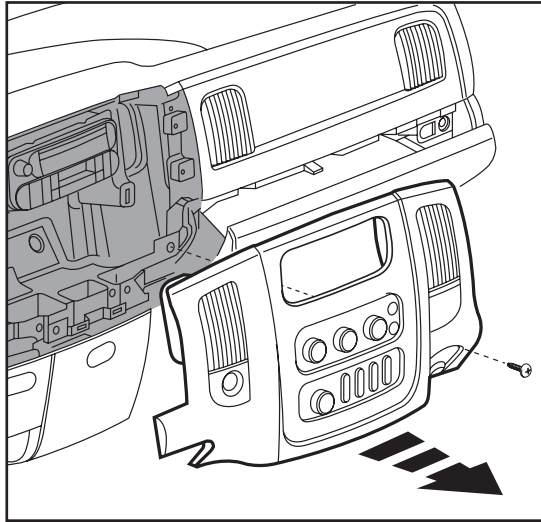
- Panel removal tool • Phillips screwdriver

CAUTION: Metra recommends disconnecting the negative battery terminal before beginning any installation. All accessories, switches, and especially air bag indicator lights must be plugged in before reconnecting the battery or cycling the ignition.

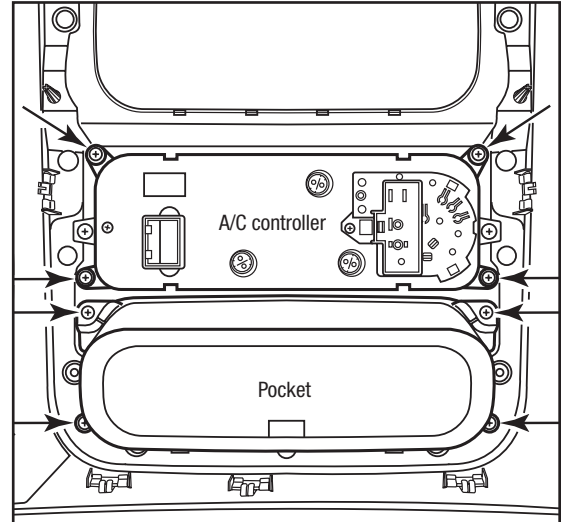
NOTE: Refer to the instructions included with the aftermarket radio.

Dash Disassembly

1. Unclip the top edge of the trim panel below the steering column (it does not have to be removed).
2. Remove the (1) Phillips-head screw from below the right A/C vent. (Figure A)
3. Unclip and remove the dash trim panel. (Figure A)
4. Remove the (4) Philips screws that secure the radio. Disconnect and remove the radio.
5. Remove the (4) Philips screws that secure the a/c controller (save these screws they will be reused).
6. Remove the (4) Phillips screws that secure the factory pocket (save these screws they will be reused).



(Figure A)



(Figure B)

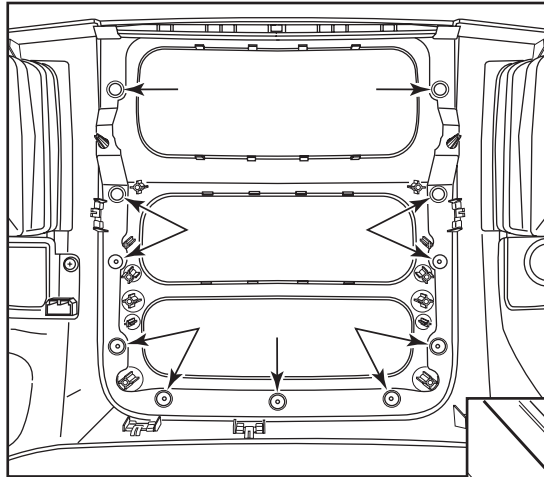
Continued on next page

Dash Disassembly

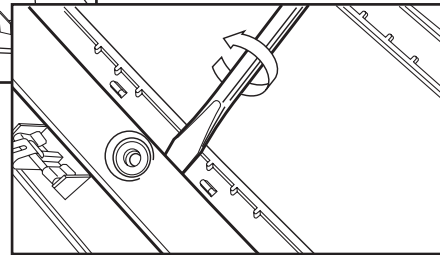
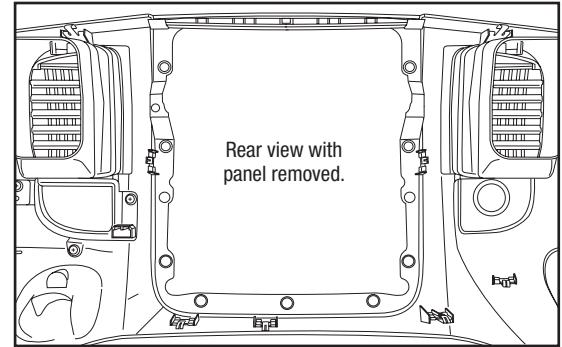
- The dash cavity will need to be cut to make room for the aftermarket equipment. Cut and remove the shelf below the factory radio. Don't cut away the factory radio mounting positions.
- Locate the spots where the two dash parts are welded together. Slide a flat head screw driver between the two plastic panels and rotate the screwdriver so that it forces the two plates apart. (Figure C and D)

Note: If desired, the welds can be pre-drilled softly with a 1/4" drill bit to help the welds apart.

Continue to kit assembly



(Figure C)



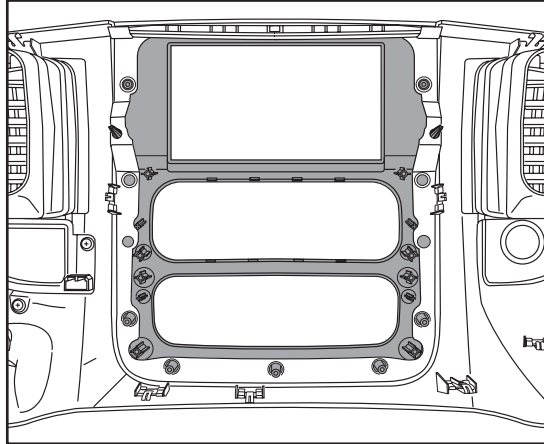
(Figure D)



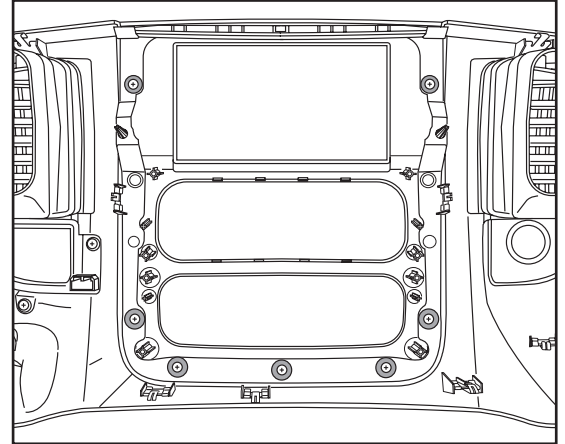
95-6522B

Kit Assembly

1. Place the new radio trim panel into the modified factory dash panel. (Figure A)
2. Place the (5) retaining caps over the (5) lower bosses and use the included 1/2" screws to secure. (Figure B)
3. Place the (2) smaller retaining caps over the (2) upper bosses and use the included 3/8" screws to secure. (Figure B)



(Figure A)



(Figure B)

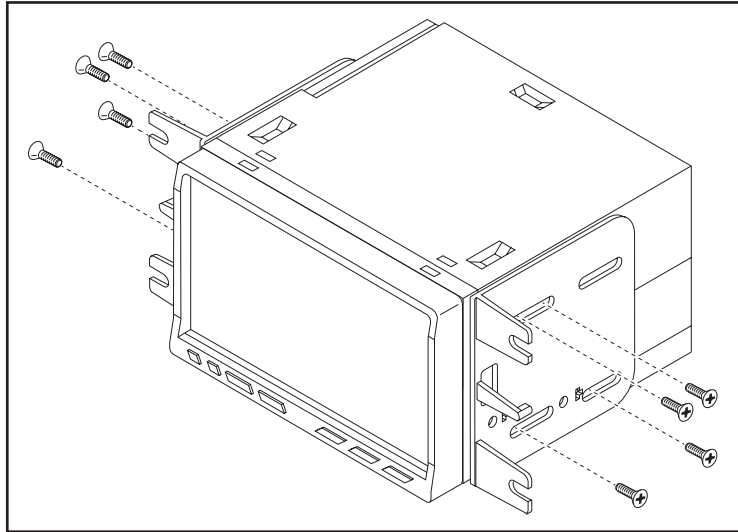


95-6522B

Kit Assembly

ISO DDIN radio provisions

1. Attach the radio to the brackets with the screws supplied with the radio. (Figure A)
2. Locate the factory wiring harness in the dash. Metra recommends using the proper mating adapter from Metra or AXXESS. Re-connect the negative battery terminal and test the unit for proper operation.
3. Mount the new radio assembly into the dash and reassemble dash in reverse order of disassembly using the 95-6522B radio trim panel.



(Figure A)