

CATALOG OF METER CONNECTION DEVICES
APPROVED BY METER ENGINEERING AND
STANDARDS

TABLE OF CONTENTS

	<u>Page</u>
Information & Requirements for Meter Connection Devices	<u>1 - 5</u>
<u>Approved Meter Connection Devices</u>	
Anchor	<u>6</u>
Briggs and Stratton	<u>6</u>
Cutler Hammer	<u>7-8</u>
Durham	<u>9</u>
Electrical Products Corp. (EPC)	<u>10</u>
Erickson	<u>11</u>
General Electric Co.	<u>12</u>
Landis & Gyr	<u>13</u>
Meter Devices Company	<u>14</u>
Midwest Electrical Products	<u>15</u>
Milbank	<u>16 - 17</u>
Murray Electrical Products	<u>18</u>
Siemens	<u>19</u>
Square D Company	<u>20</u>
Switchboard Apparatus Co.	<u>21</u>
Talon	<u>22</u>
Thomas and Betts	<u>23</u>
Cross Reference List of Transformer Rated Meter Conn. Devices	<u>24</u>
Approved Current Transformer Compartments	<u>25 - 26</u>
List of Manufacturers and Local Representatives	<u>27 - 30</u>

INFORMATION & REQUIREMENTS FOR METER CONNECTION DEVICES

I. BASIC REQUIREMENTS

With regard to meter connection devices that are approved for use in the ComEd service area, the basic requirements are as follows:

- 1) All meter connection devices must have CECHA stamp.
- 2) All meter connection devices must have ringless covers and reinforced jaws
- 3) By-passes are required on all meter sockets (horn type on single-phase and lever arm type on polyphase).

The above requirements are listed on each of the manufacturers' pages in this catalog to further emphasize their importance.

II. TYPICAL METER CONNECTION DEVICES

The arrangement of meter connection devices will generally fall into one of the following categories:

- 1) Single position overhead
- 2) Single position underground (with raceway)
- 3) Multiple position horizontal grouped sockets (overhead or underground service)
- 4) All-In-One type multiple position metering unit (overhead or underground service)
- 5) Vertically grouped sockets (multiple position; indoor or outdoor)
- 6) Switchboard type metering panels (multiple position; indoor)

Diagrams of these various categories are shown in Exhibit A.

Categories 1 through 4 above will generally be installed outdoors. The vertically grouped sockets (category 5) can be installed indoors or outdoors. The installation of vertical sockets will be covered in greater detail in Section V. Category 6 (switchboard type metering panels) are designed for indoor installation, mainly in commercial buildings.

III. METER MOUNTING HEIGHTS

Meter connection devices must be installed at heights where meters can be installed and read safely by meter personnel standing adjacent to the meter. Access to meters by crawling on hands and knees or by standing on a ladder is **not** acceptable. The minimum meter mounting height is 30-inches, and the maximum height can be 60 to 72 inches depending on the type of meter connection device. The minimum and maximum meter mounting heights are shown in Exhibit A.

INFORMATION & REQUIREMENTS (Continued)

IV. RACEWAY REQUIREMENTS FOR UNDERGROUND SERVICE

Wherever an underground service is to be connected to a meter connection device, a raceway must be used to route the cables to the terminals within the device. This is evident in all the single position underground devices that are currently CECHA listed, as they are all designed as a combination meter socket and raceway. This is true of both single-phase and polyphase units. With regard to the multi-position units such as the All-In-One type or the horizontal grouped sockets as shown in Exhibits A and B, a raceway is required on all underground service connections to these units. These raceways are available from some socket manufacturers and local switchboard builders.

V. REQUIREMENTS ASSOCIATED WITH VERTICALLY GROUPED MODULES

Vertically grouped meter connection devices (meter modules) are generally available in 2, 3 or 4 positions and they can be bussed together to provide multiple meter points at a single location. An example of where these meter modules would be used is in a multi-story building in meter rooms on the various floors of the building.

These meter modules are always installed with some type of main device which can be a termination box, fused switch or circuit breaker. The electric service supply will terminate in this main device, and the meter modules will be internally connected to this main device by buss bars.

The main device can be connected directly to the adjacent meter modules if both units have the same front to rear dimension (or depth). However, if the main device has a greater depth than the adjacent meter modules, a spacer is required between the two units. Exhibit C outlines the conditions where a spacer is required. In the majority of these types of installations utilizing vertical meter modules, a spacer **will** be required between the main device and adjacent meter modules. Exhibit B also outlines meter module installation on adjacent corner walls in a meter room and frontal clearance requirements.

With regard to the meter mounting heights outlined in Section III. above, a 4-position single-phase module and a 3-position polyphase module is the maximum size that can be used which will comply with these dimensions. In some cases, installation of 5-position single-phase meter modules will be allowed, but prior approval is required from System Meter in Oak Brook.

VI. ADDITIONAL INFORMATION

For additional information on the installation of meter connection devices and related equipment refer to the ComEd Rule Book which is entitled "Information and Requirements for the Supply of Electric Service. Check the following sections:

- 1) Pages 38 to 46: General metering requirements.
- 2) Pages 106 to 111 and pages 133 to 171: Wiring layouts and general information on various self-contained meter connection devices.
- 3) Pages 172 to 184: Current transformer compartment specifications and wiring layouts for various transformer rated meter installations.

Exhibit A

Typical Meter Connection Devices and Mounting Heights (Minimum & Maximum)

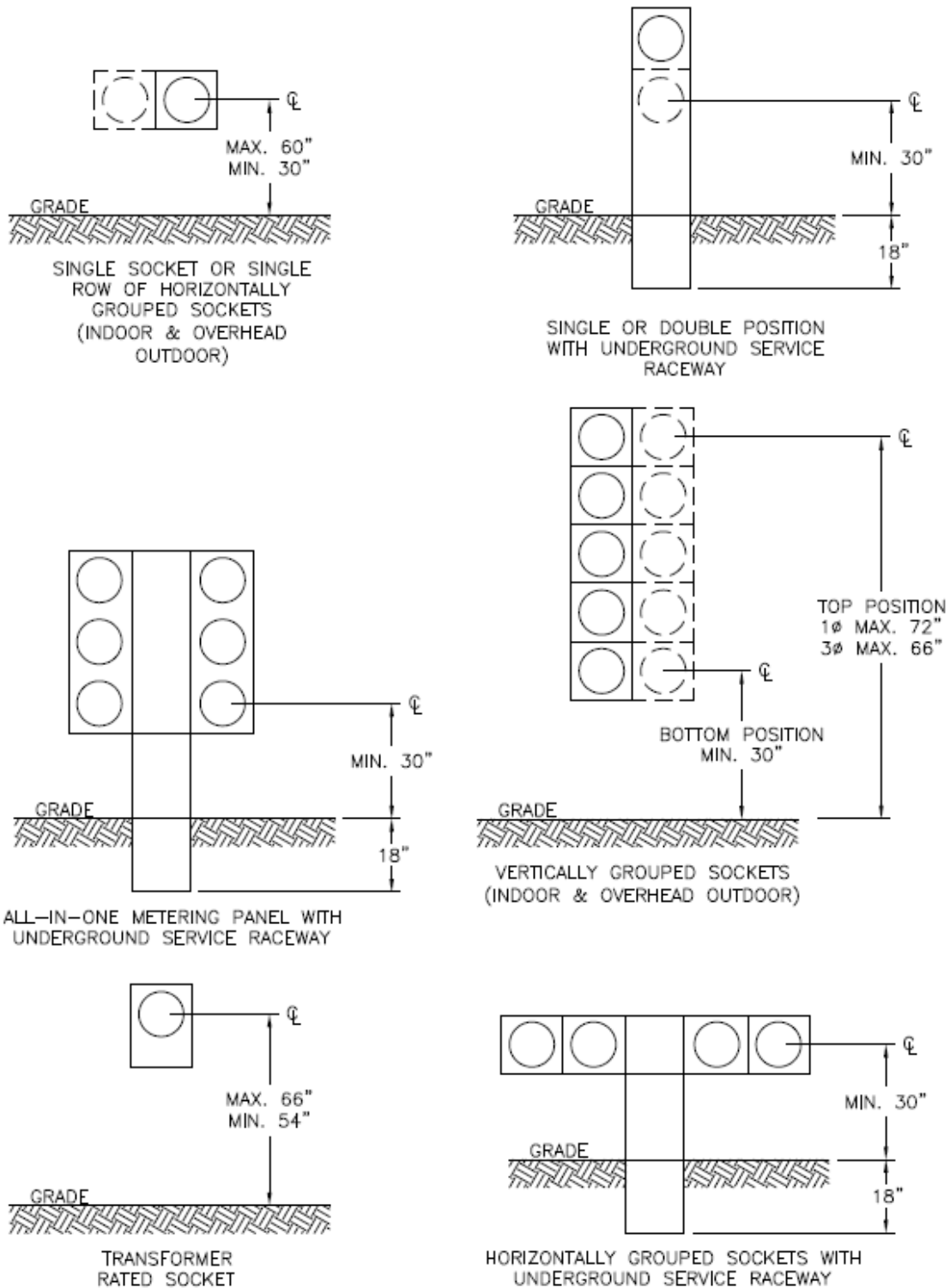
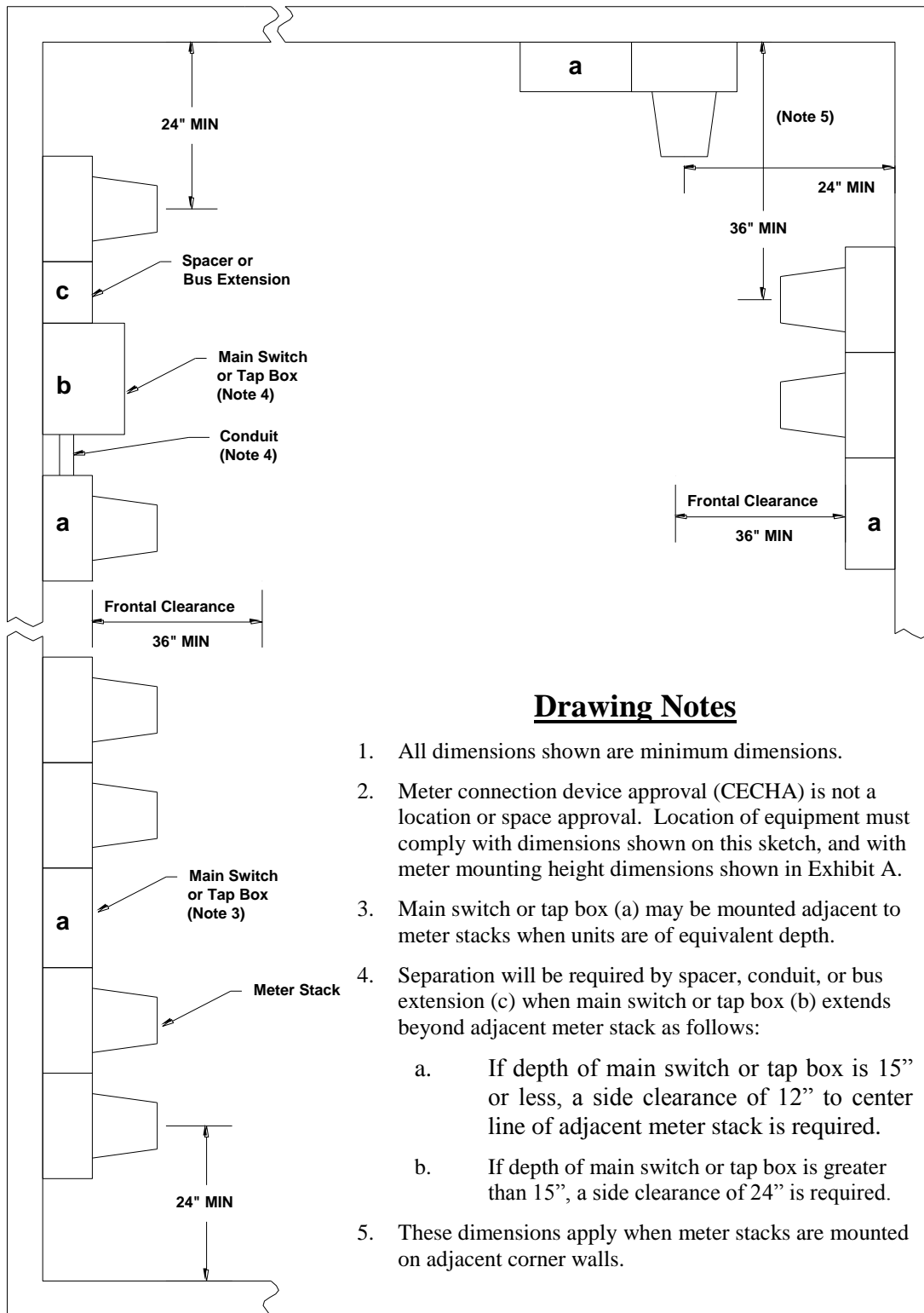


Exhibit B

Frontal and Side Clearances



Drawing Notes

1. All dimensions shown are minimum dimensions.
2. Meter connection device approval (CECHA) is not a location or space approval. Location of equipment must comply with dimensions shown on this sketch, and with meter mounting height dimensions shown in Exhibit A.
3. Main switch or tap box (a) may be mounted adjacent to meter stacks when units are of equivalent depth.
4. Separation will be required by spacer, conduit, or bus extension (c) when main switch or tap box (b) extends beyond adjacent meter stack as follows:
 - a. If depth of main switch or tap box is 15" or less, a side clearance of 12" to center line of adjacent meter stack is required.
 - b. If depth of main switch or tap box is greater than 15", a side clearance of 24" is required.
5. These dimensions apply when meter stacks are mounted on adjacent corner walls.

The following notes apply to all meter connection devices that are used in ComEd's service territory

- Notes:
- 1) All meter connection devices must have CECHA stamp.
 - 2) All meter connection devices must have ring less covers and reinforced jaws.
 - 3) Bypasses are required on all meter sockets (horn type on single-phase and lever arm type on polyphase).
 - 4) The use of 5-position vertical meter modules must be approved by System Meter prior to installation of the equipment. Contact System Meter Dept for requirements.
 - 5) When using switchboard type metering equipment, it is a requirement that prints be submitted on each project where the equipment is to be installed. These prints must be reviewed and approved by System Meter before the equipment is installed or energized.
 - 6) These units are to be used as filler or replacement modules in existing Cregier Mark VII meter stacks. They are not to be used for new construction projects

ANCHOR

METER CONNECTION DEVICES

(All units listed are 120/240 volt, single-phase,
3-wire and for use outdoors unless noted)

OVERHEAD

URS1804B-HO-CECHA (200 amp)
URS1394B-HO (200 amp)
TB44542-HLO (320 amp)

Socket-breaker combinations

MB100R-B-HO-CH (100 amp)
MB200R-B-HO-CH (200 amp)

UNDERGROUND

MP5S204B-CECHA (200 amp)
2MP5S204B-CECHA (2-position vertical;
200 amp/position)
MP44342-CH (320 amp)

Socket-breaker combinations

MP5S204B-CH-B000 (100 amp)

OVERHEAD

MULTIPLE POSITION TROUGHS

HORIZONTAL GANGED

200 amp/position

2URS1804B-C600-HLO-CH (2-position)
3URS1804B-C600-HL (3-position)
4URS1804B-C600-HLO-CH (4-position)
6URS1804B-C600-2HLO (6-position)

POLYPHASE OVERHEAD (Rated at 600 volts)

TB42552-H7M-HP-CH (200 amp, 3-phase, 3-wire)
TB2072-H7M-HP-CH (200 amp, 3-phase, 4-wire)

TRANSFORMER RATED (Rated at 600 volts)

INDOOR/OUTDOOR

RTSS6-63W-CH (Single-phase, 3-wire)
RTSS8-73W-CH (3-phase, 3-wire)
RTSS13-13W-CH (3-phase, 4-wire)

BRIGGS AND STRATTON

METER CONNECTION DEVICES

Direct Power 200A Transfer Switch Symphony II – Model # 071095

CUTLER HAMMER

METER CONNECTION DEVICES

(All units listed are 120/240 volt, single-phase,
3-wire meter-breaker combinations unless noted)

SINGLE PHASE OVERHEAD

1009079-CH (100 amp)
1009085-CH (100 amp w/breaker)
1009581-CH (200 amp w/breaker)
1009582-CH (200 amp w/breaker) / 2-110a LB
1007665-CH (200 amp)
1007662-CH (320 amp)
1009693-CH (100 amp)
1009694-CH (100 amp)
1009695-CH (100 amp)
1009697-CH (100 amp)
1008843-CH (200 amp)

w/raceway opening

1008842-CH (200 amp) 2-position
1008843-CH (200 amp) 3-position
1008844-CH (200 amp) 4-position
1009579-CH (200 amp) 5-position
1009611-CH (200 amp) 6-position

w/o raceway opening

1008958-CH (200 amp) 2-position
1008959-CH (200 amp) 3-position
1008960-CH (200 amp) 4-position
1009925-CH (200 amp) 5-position
1009926-CH (200 amp) 6-position

SINGLE PHASE UNDERGROUND

1006388-CH (200 amp)
1008846-CH (200 amp w/breaker)
1008847-CH (320 amp w/breakers)
1008848-CH (320 amp w/breakers)

VERTICAL METER MODULES

INDOOR/OUTDOOR 125 amp/position

1MM312RRLB (3-position)
1MM412RRLB (4-position)
1MM512RRLB (5-position) (Note 4)

200 amp/position

1009265-CH (2-position)
1MM420RRLB
1MM320RRLB (3-position)
1MP4206RRLB (4-position)

320/amp/position

120/240 or 120/208 1-ph 3wire CI 320
1007672CH
35MM240R1240 (2-position)

THREE PHASE OVERHEAD

4 – Wire w/raceway opening

1009958-CH (200 amp) 2-position
1009959-CH (200 amp) 3-position
1009960-CH (200 amp) 4-position
1009961-CH (200 amp) 5-position
1009962-CH (200 amp) 6-position

THREE PHASE UNDERGROUND

1009845-CH (200 amp)

METER PACKS

ALL-IN-ONE-TYPE

INDOOR/OUTDOOR 125 amp/position

1MP2122RRLB (2-position vertical)
1MP3122RRLB (3-position vertical)
1MP4124RRLB (4-position vertical)
1MP5126RRLB (5-position, 3-high)
1MP6126RRLB (6-position, 3-high)

200 amp/position

1MP2204RRLB (2-position vertical)
1MP3204RRLB (3-position vertical)
1MP5206RRLB (5-position, 3-high)
1MP6206RRLB (6-position, 3-high)

CUTLER HAMMER (Continued)

METER CONNECTION DEVICES

(All units listed are 120/240 volt, single-phase,
3-wire meter-breaker combinations unless noted)

**125 amp/position (120/208 volt, 3-phase
4-wire wye for use with single phase meters)**
3MM212RRLB (2-position)
3MM312RRLB (3-position)
3MM412RRLB (4-position)
3MM512RRLB (5-position) (Note 4)

**200 amp/position (120/208 volt, 3-phase,
4-wire wye for use with single phase meters)**
3MM220RRLB (2-position)
3MM320RRLB (3-position)
3MM420RRLB
35MM120R12 (1-position vertical)
35MM220R12 (2-position vertical)
35MM320R12 (3-position vertical)

POLYPHASE OVERHEAD

1007666-CH (200 amp, 3-phase, 3-wire)
1007670-CH (200 amp, 3-phase, 4-wire)

Instrument Rated Meter Sockets

USTH61A195CH
USTH81A194CH
USTH131A123CH
6 Terminal Transformer Rated Socket
Single-Phase, 3-Wire
8 Terminal Transformer Rated Socket
3-Phase, 3-Wire
13 Terminal Transformer Rated Socket
3-Phase, 4-Wire

POLYPHASE METER MODULES

INDOOR/OUTDOOR

**200 amp/position (120/208 volt 3-ph., 4-wire, wye;
120/240 volt 3-ph., 4-wire, delta)**
37MM120R12 (1-position)
37MM220R12 (2-position vertical)
37MM320R12 (3-position vertical)

POLYPHASE

COMMERCIAL METERING SWITCHBOARDS INDOOR SWITCHBOARD TYPE

200 amp/position (120/240 volt 3-ph., 4-wire, delta;
120/208 volt 3-ph., 4-wire, wye;
277/480 volt 3-ph., 4-wire wye)

TYPE CMM (Note 5)

DURHAM

METER CONNECTION DEVICES

(All units listed are rated at 600 volts, and for use outdoors)

SINGLE PHASE OVERHEAD

1009078 (200 amp unit w/100 amp breaker)
1009079 (100 amp)
1009085 (100 amp with breaker)
1009581 (200 amp w/breaker)
1009582 (200 amp w/breaker & Load breaker)
UHT-RS202B (200 amp)
UT-H4330T (320 amp)

1009693 (100 amp 2-position)
1009694 (100 amp 3-position)
1009695 (100 amp 4-position)
1009696 (100 amp 5-position)
1009697(100 amp 6-position)

w/raceway opening

1008842 (200 amp) 2-position
1008843 (200 amp) 3-position
1008844 (200 amp) 4-position
1009579 (200 amp) 5-position
1009611 (200 amp) 6-position

w/o raceway opening

1008958 (200 amp) 2-position
1008959 (200 amp) 3-position
1008960 (200 amp) 4-position
1009925 (200 amp) 5-position
1009926 (200 amp) 6-position

SINGLE PHASE UNDERGROUND

1007488 (200 amp)
1007951 (320 amp)
1006388 (200 amp)
1008846 (200 amp w/breaker)
1009265 (200 amp 2 position)
1009564 (200 amp w/breakers)
1008847 (class 320 w/2-200amp breakers)
1008848 (class 320 with breaker provisions)

THREE PHASE OVERHEAD

THREE PHASE OVERHEAD

4 – Wire w/raceway opening

1009958 (200 amp) 2-position
1009959 (200 amp) 3-position
1009960 (200 amp) 4-position
1009961 (200 amp) 5-position
1009962 (200 amp) 6-position

UT-H5213B (200 amp, 3-phase, 3-wire)

UT-H7213B (200 amp, 3-phase, 4-wire)

POLYPHASE UNDERGROUND

1009845 (200 amp)

ELECTRICAL PRODUCTS CORP. (EPC)

METER CONNECTION DEVICES

(All units listed are 120/240 volt, single-phase,
3-wire meter-breaker combinations unless noted)

HORIZONTAL METER MODULES

INDOOR

125 amp/position

CRM-102 (2-position; meter above breakers)

CRM-103 (3-position; meter above breakers)

CRM-102B (2-position; meter below breakers)

CRM-103B (3-position; meter below breakers)

The above units have a horizontal bus rating of 350 amps.
These units may also be used on 120/208 volt single-phase, 3-wire
services with the addition of a fifth jaw (Cat. No.CRM5J) installed
in the 9 o'clock position

ERICKSON

METER CONNECTION DEVICES

(All units listed are meter-breaker combinations unless noted)

SINGLE PHASE **RESIDENTIAL METERING PANELBOARDS** **INDOOR/OUTDOOR**

200 amp/position (120/240 volt, 1-phase, 3-wire)

1RM84-1 (1-position)
1RM84-2 (2-position vertical)
1RM84-3 (3-position vertical)
1RM84-4 (4-position vertical)

200 amp/position (120/208 volt, 3-phase, 4-wire wye for use with single phase meters)

3RM84-1 (1-position)
3RM84-2 (2-position vertical)
3RM84-3 (3-position vertical)
3RM84-4 (4-position vertical)

POLYPHASE **COMMERCIAL METERING PANELBOARDS** **INDOOR/OUTDOOR**

200 amp/position (120/208 volt, 3-phase, 4-wire wye for use with single phase meters)

CM84-1 (1-position)
CM84-2 (2-position vertical)
CM84-3 (3-position vertical)
CM84-4 (4-position vertical)

200 amp/position **(120/208 volt 3-ph., 4-wire, wye;** **(120/240 volt 3-ph., 4-wire Delta)**

CM87-1 (1-position)
CM87-2 (2-position vertical)
CM87-3 (3-position vertical)
CM87-4 (4-position vertical)

POLYPHASE COMMERCIAL **METERING PANELBOARDS (continued)** **INDOOR/OUTDOOR**

200 amp/position (277/480 volt 3-ph., 4-wire, wye)

6CM87-1 (1-position)
6CM87-2 (2-position vertical)
6CM87-3 (3-position vertical)
6CM87-4 (4-position vertical)

POLYPHASE MODULAR METERING UNITS **INDOOR SWITCHBOARD TYPE (Note 4)**

200 amp/position (120/240 volt 3-ph., 4-wire, delta; **120/208 volt 3-ph., 4-wire, wye;** **277/480 volt 3-ph., 4-wire, wye)**

WMS Series (Single socket unit with fusible switch)
WMP Series (Single socket unit with fusible pullout)
WMCB Series (Single socket unit with breaker)
WMPT Series (Twin socket unit with fusible)
WMCBT Series (Twin socket unit with breakers)
MK7-91 Series (Single socket unit with switch
or breaker).(Note 6)

POLYPHASE **COMMERCIAL METERING PANELBOARDS** **HORIZONTAL GANGED SOCKETS** **INDOOR/OUTDOOR (Note 4)**

200 amp/position **(480 volt, 3-phase, 3-wire delta;** **(277/480 volt 3-ph., 4-wire, wye)**

SMCB Series (Single socket unit with breaker)
SMP Series (Single socket unit with fusible pullout)

GENERAL ELECTRIC COMPANY

METER CONNECTION DEVICES

(All units listed are 120/240 volt, single-phase,
3-wire meter-breaker combinations unless noted)

OVERHEAD OUTDOOR

743X2G12 (200 amp, socket only; no provision
for breaker)

no provision for breaker)

METER MOD III VERTICAL MODULES
INDOOR/OUTDOOR

125 amp/position

TMPR8212R-HB (2-position)
TMPR8312R-HB (3-position)
TMPR8412R-HB (4-position)
TMPR8512R-HB (5-position) (Note 4)

200 amp/position

TMPR8220R-HB (2-position)
TMPR8320R-HB (3-position)
TMPR8420R-HB (4-position)

(The above units can be used on 120/208 volt
network services with the addition of a fifth
jaw installed in the 9 o'clock position; Cat.
No. of fifth jaw: TM5JU)

MINI MOD III MODULAR METERING
ALL-IN-ONE-TYPE
INDOOR/OUTDOOR

125 amp/position

TMMR2212R-HB (2-position vertical)
TMMR4312R-HB (3-position vertical)
TMMR4412R-HB (4-position vertical)
TMMR6512R-HB (5-position, 3-high)
TMMR6612R-HB (6-position, 3-high)

MINI MOD III MODULAR METERING (cont.)
ALL-IN-ONE-TYPE

INDOOR/OUTDOOR

200 amp/position

TMMR4220R-HB (2-position vertical)
TMMR6320R-HB (3-position vertical)
TMMR6520R-HB (5-position, 3-high)
TMMR6620R-HB (6-position, 3-high)

METER MOD III POLYPHASE MODULES
INDOOR/OUTDOOR

200 amp/position (120/208 volt 3-ph., 4-wire, wye;
120/240 volt 3-ph., 4-wire, delta)

TMPR312122R-HB (1-position)
TMPR312222R-HB (2-position vertical)
TMPR312322R-HB (3-position vertical)

LANDIS & GYR *

METER CONNECTION DEVICES

(All units listed are rated at 600 volts,
and for use outdoors unless noted)

SINGLE PHASE OVERHEAD

UAT317-OPCH (200 amp)
48104-02CH (320 amp)

Socket-breaker combinations
(120/240 volt, single-phase, 3-wire)
UAB111-OPCH (100 amp)
UAB317-OPCH (200 amp)

SINGLE PHASE UNDERGROUND

UAP317-PPCH (200 amp)
47604P-9CH (320 amp)
47604PB-9CH (320 amp)

Socket-breaker combinations
(120/240 volt, single-phase, 3-wire)
UAPB317 -PPCH (200 amp)

SINGLE PHASE OVERHEAD
HORIZONTAL GANGED SOCKETS

100 amp/position

UA2311-OPCH (2-position)
UA3311-OPCH (3-position)
UA4311-OPCH (4-position)

200 amp/position

UA2717-YPCH (2-position)
UA3717-YPCH (3-position)
UA4719-YPCH (4-position)
UA5719-KPCH (5-position)
UA6719-KPCH (6-position)

POLYPHASE OVERHEAD

40405-02CH (200 amp, 3-phase, 3-wire)
40407-02CH (200 amp, 3-phase, 4-wire)

POLYPHASE UNDERGROUND

40405P-9CH (200 amp, 3-phase, 3-wire)
40407P-9CH (200 amp, 3-phase, 4-wire)

TRANSFORMER RATED
INDOOR/OUTDOOR

9807-0431 (1-phase, 3-wire)
9807-0432 (3-phase, 3-wire)
9807-0433 (3-phase, 4-wire)

* Landis & Gyr is owned by Siemens Energy & Automation. The meter connection devices listed above may be sold under the Siemens label. The individual Siemens devices will have the same catalog numbers as Landis & Gyr, but they will be preceded by an "S". For example: Landis & Gyr Cat. No. UAT317-OPCH would have a Siemens Cat. No. SUAT317-OPCH.

METER DEVICES COMPANY

METER CONNECTION DEVICES

(All units listed are rated at 600 volts)

TRANSFORMER RATED
INDOOR/OUTDOOR

602U3010A6-166 (Single-phase, 3-wire)

602U3010A8-165 (3-phase, 3-wire)

602U3010A13-160 (3-phase, 4-wire)

MIDWEST ELECTRIC PRODUCTS

METER CONNECTION DEVICES

(All units listed are rated at 600 volts,
and for use outdoors unless noted)

SINGLE PHASE OVERHEAD

1007665-MEP (200 amp)
LQRLPU414BA (200 amp)
LQRLPU41412BA (200 amp; 12 in. wide)
RPQU18557SA (320 amp)
1007662-MEP (320 amp)

Socket-breaker combination

(120/240 volt, single phase, 3-wire)
R101CB2 (200 AMP)
R201CB0 (200 amp)
R211CP6 (200 amp w/breakers)

SINGLE PHASE UNDERGROUND

1006388-MEP (200 amp)
R2ECWSP61 (200 amp)
R2ECWLS6 (200 amp with long raceway)
1009265-MEP (200 amp 2-position)
R2502CP6 (200 amp w/breakers)

R0819606 (100 amp w/breaker)

SINGLE PHASE UNDERGROUND

TRAILER PEDESTAL

Socket-breaker combination

(120/240 volt, single-phase, 3-wire)

R281CS6HPCE (200 amp)

POLYPHASE OVERHEAD

1007666-MEP (200 amp, 3-phase, 3-wire)
1007670-MEP (200 amp, 3-phase, 4-wire)

SINGLE PHASE OVERHEAD

HORIZONTAL GANGED SOCKETS

(120/240 volt, single phase, 3-wire)

200 amp/position

BROQU4822DA (2-position)
BROQU4832DA (3-position)
BROQU4843DA (4-position)
BROQU4853DA (5-position)
BROQU4864DA (6-position)

POLYPHASE OVERHEAD

ROQU18449 (200 amp, 3-phase, 4-wire)

MILBANK

METER CONNECTION DEVICES

(All units listed are rated at 600 volts, and for outdoor use unless noted)

SINGLE PHASE OVERHEAD

U8949-RL-TG-KK (200 amp)
U4363-X-QG CECHA(320 amp)

Socket-breaker combinations

(120/240 volt, single phase, 3-wire)
U7375-RL-KK (100 amp)
U7607-RL-200-KK (200amp)
U5842-RL-KK-CECHA (5th Term Option)
U5842-RL-100-KK (5th Term Option)
U5842-RL-125-KK (5th Term Option)
U5842-RL-200-KK (5th Term Option)

SINGLE PHASE UNDERGROUND

U8436-O (200 amp)
U8436-O-HP (200 amp-long raceway)

U8303-O (2-pos. vertical; 200 amp/pos.)
U1748-O (320 amp)

Socket-breaker combinations

(120/240 volt, single-phase, 3-wire)
NU8980-O-KK (200 amp)
U3849-O-2/200 (320 amp with 2-200 amp
circuit breakers)
U5706-0-200S (200 amp)

SINGLE PHASE OVERHEAD HORIZONTAL GANGED SOCKETS (120/240 volt, single-phase, 3-wire)

100 amp/position

L572-XL-KK (2-position)
L573-XL-KK (3-position)
L574-XL-KK (4-position)
L575-XL-KK (5-position)
L576-XL-KK (6-position)

200 amp/position

U1252-X-KK-K1-PED (2-position)
U1253-X-KK-K3-PED (3-position)
U1254-X-KK-K3-PED (4-position)
U1255-X-KK-K4-PED (5-position)
U1256-X-KK-K4-PED (6-position)

SINGLE PHASE UNDERGROUND CONDOMINIUM METER UNITS (120/240 volt, single-phase, 3-wire)

125 amp/position

U2852-X-PED-KK (2-position vertical)
U2853-X-PED-KK (3-position vertical)
U2854-X-PED-KK (4-position, 2-high)
U2855-X-PED-KK (5-position, 3-high)
U2856-X-PED-KK (6-position, 3-high)

U5902-X (2 position)
U5903-X (3 position)
U5904-X (4 position)
U5905-X (5 position)
U5906-X (6 position)

200 amp/position

U2862-X-PED-KK (2-position vertical)
U2863-X-PED-KK (3-position vertical)

U2864-X-PED-KK (4-position, 2-high)
U2865-X-PED-KK (5-position, 3-high)
U2866-X-PED-KK (6-position, 3-high)
U5882-X (2 position)
U5883-X (3 position)
U5884-X (4 position)
U5885-X (5 position)
U5886-X (6 position)

(The above condominium units are used

With the S2291-TO raceway)

POLYPHASE OVERHEAD

U8624-R-XL (200 amp, 3-phase, 3-wire)

U8606-R-XL (200 amp, 3-phase, 4-wire)
U5750-RXL-200-BL 3Phase 4 wire 200A

POLYPHASE UNDERGROUND

U9108-O (200 amp, 3-phase, 3-wire)
U9107-O (200 amp, 3-phase, 4-wire)

POLYPHASE

OVERHEAD/UNDERGROUND

200 amp/position (3-phase, 4-wire)

U2732-XT-PED (2-position horizontal)
U2733-XT-PED (3-position horizontal)
U2734-XT-PED (4-position horizontal)
U2735-XT-PED (5-position horizontal)
U2736-XT-PED (6-position horizontal)

(For underground service to the above
units use the S2291-TO raceway)

SINGLE PHASE w/breakers

OVERHEAD/UNDERGROUND

U5168-XTL-100-KK w/8 circuits
U5168-XTL-150-KK w/8 circuits
U5168-XTL-200-KK w/8 circuits
U5268-XTL-150-KK w/20 circuits
U5268-XTL-200-KK w/20 circuits

TRANSFORMER RATED

INDOOR/OUTDOOR

CE136 (Single-phase, 3-wire)
CE138 (3-phase, 3-wire)
CE1313 (3-phase, 4-wire)

Commercial

Single Phase Pedestal

CP3B91 (100 amp)
CP3B51 (100 amp) w/by-pass lever
CP3B52 (200 amp)
CP3B54 (400 amp)

MURRAY ELECTRICAL PRODUCTS

(MP=MURRY ~ SP = SIEMENS)

METER CONNECTION DEVICES

(All units listed are 120/240 volt, single-phase,
3-wire meter-breaker combinations unless noted)

OVERHEAD

OUTDOOR

RS192AX (200 amp) *

UNDERGROUND

OUTDOOR

RP118AW (200 amp) *

OVERHEAD

HORIZONTAL GANGED SOCKETS

INDOOR/OUTDOOR

125 amp/position

RN291AR (2-position) *

RN391AR (3-position) *

RN491AR (4-position) *

VERTICAL METER MODULES

INDOOR/OUTDOOR

125 amp/position

DC331W (3-position)

DC431W (4-position)

200 amp/position

DC332W (3-position)

125 amp/position (120/208 volt 3-phase,

4-wire wye for use with single-phase meters)

DC341W (3-position)

DC441W (4-position)

200 amp/position (120/208 volt 3-phase,

4-wire wye for use with single-phase meters)

DC342W (3-position)

DC442W (4-position)

MP2211RJB (125 amp) *

MP4411RJB (125 amp) *

MP4212RJB (125 amp) *

MP4312RJB (200 amp) *

MP4412RJB (200 amp) *

MP4511R5B (125 amp) 5p 3 high *

MP4611R5B (125 amp) 6p 3 high *

MP6611R5B (125 amp) 6p 3 high *

MP6512R5B (125 amp) 5p 3 high *

MP6612R5B (125 amp) 6p 3 high *

* Meter sockets only; no provision for breaker.

UNI PACK METER CENTERS

ALL-IN-ONE-TYPE

INDOOR/OUTDOOR

125 amp/position

UM229RCR (2-position vertical)

UM329RCR (3-position, 2-high)

UM449RCR (4-position, 2-high)

UM569RCR (5-position, 3-high)

UM669RCR (6-position, 3-high)

200 amp/position

UM247RCR (2-position vertical)

UM347RCR (3-position, 2-high)

UM447RCR (4-position, 2-high)

UM447RCR (4-position, 2-high)

UM567RCR (5-position, 3-high)

UM667RCR (6-position, 3-high)

POLYPHASE OVERHEAD (Rated at 600 volts)

OUTDOOR

CE205U (200 amp, 3-phase, 3-wire) *

CE207U (200 amp, 3-phase, 4-wire) *

POLYPHASE METER MODULES

INDOOR/OUTDOOR

125 amp/position (120/208 volt 3-ph., 4-wire, wye; 120/240 volt 3-ph., 4-wire, delta)

DL141W7 (1-position)

DL241W7 (2-position vertical)

DL341W7 (3-position vertical)

200 amp/position (120/208 volt 3-ph., 4-wire, wye; 120/240 volt 3-ph., 4-wire, delta)

DL142W7 (1-position)

DL242W7 (2-position vertical)

DL342W7 (3-position vertical)

SIEMENS

METER CONNECTION DEVICES

(All units listed are 120/240 volt, single-phase,
3-wire meter-breaker combinations unless noted)

VERTICAL METER MODULES **INDOOR/OUTDOOR**

125 amp/position

WMM2URC (2-position)
WMM3URC (3-position)
WMM4URC (4-position)
WMM21125RB (2-position w/breaker)
WMM31125RB (3-position w/breaker)
WMM41125RB (4-position w/breaker)

200 amp/position

WMM2200URC (2-position)
WMM3200URC (3-position)
WMM4200URC (4-position)

125 amp/position (120/208 volt, 3-phase, 4-wire wye for use with single-phase meters

WMM34URC (3-position)
WMM44ABURC (4-position)
WMM44BCURC (4-position)
WMM44ACURC (4-position)

200 amp/position (120/208 volt, 3-phase, 4-wire wye for use with single-phase meters

WMM34200URC (3-position)
WMM44AB200URC (4-position)
WMM44B200CURC (4-position)
WMM44AC200URC (4-position)

UNI-PACK METER CENTERS **ALL-IN-ONE-TYPE INDOOR/OUTDOOR**

125 amp/position

W22PAKURC (2-position vertical) - SP2211RJB
W33PAKURC (3-position, 2-high) - SP3311RJB
W44PAKURC (4-position, 2-high) - SP4411RJB
W65PAKURC (5-position, 3-high) - SP6511RJB
W66PAKURC (6-position, 3-high) - SP6611RJB
W45PAKURC (5-position) - SP4511RJB
W46PAKURC (6-position) - SP4611RJB

200 amp/position

W22PAK200URC (2-position vertical)
W33PAK200URC (3-position, 2-high)
W44PAK200URC (4-position, 2-high)
W65PAK200URC (5-position, 3-high) - SP6512RJB
W66PAK200URC (6-position, 3-high) - SP6612RJB
SP4212RJB
SP4312RJB
SP4412RJB

POLYPHASE METER MODULES **INDOOR/OUTDOOR**

125 amp/position (120/208 volt 3-ph., 4-wire, wye; 120/240 volt 3-ph., 4-wire, delta)

W3MM1 (1-position)
W3MM2 (2-position vertical)
W3MM3 (3-position vertical)

200 amp/position (120/208 volt 3-ph., 4-wire, wye; 120/240 volt 3-ph., 4-wire, delta)

W3MM1200C (1-position)
W3MM2200C (2-position vertical)
W3MM3200C (3-position vertical)

SQUARE D COMPANY

METER CONNECTION DEVICES

(All units listed are 120/240 volt, single-phase,
3-wire meter-breaker combinations unless noted)

EZ METER PAK METER CENTERS VERTICAL MODULES INDOOR/OUTDOOR

125 amp/position

EZMH113125 (3-position)
EZMH114125 (4-position)
EZMH115125 (5-position) (Note 4)

200 amp/position

EZML111200 (1-position) 111225
EZML112200 (2-position) 112225
EZML113200 (3-position) 113225
1009265 (2-position)

125 amp/position (120/208 volt, 3-phase, 4-wire wye for use with single-phase meters)

EZMH313125 (3-position)
EZMH314125 (4-position)
EZMH315125 (5-position) (Note 4)

200 amp/position (120/208 volt, 3-phase, 4-wire wye for use with single-phase meters)

EZML312200 (2-position) 225
EZML313200 (3-position) 225
EZM314225 (4-position)

SINGLE PHASE OVERHEAD

1007665-SQD (200 amp)
1007662-SQD (320 amp)
1009079-SQD
UAT417-XPQ6 (200 amp)

SINGLE PHASE UNDERGROUND

1006388-SQD (200 amp)

MP METER PAK METER CENTERS ALL-IN-ONE-TYPE INDOOR/OUTDOOR

125 amp/position

MPH22125 (2-position vertical)
MPH33125 (3-position vertical)
MPH44125 (4-position vertical)
MPH55125 (5-position, 3-high)
MPH66125 (6-position, 3-high)

POLYPHASE EZ METER PAK METER CENTERS INDOOR/OUTDOOR

200 amp/position (120/208 volt 3-ph., 4-wire, wye;

120/240 volt 3-ph., 4-wire, delta)
EZML331200 (1-position) 331225
EZML332200 (2-position vertical) 332225
EZML333200 (3-position vertical) 333225

POWER STYLE

COMMERCIAL MULTIPLE METERING INDOOR SWITCHBOARD TYPE

**200 amp/position (120/208 volt 3-ph., 4-wire, wye;
277/480 volt 3-ph., 4-wire, wye)**
CMM Type (Note 5)

POLYPHASE OVERHEAD

1007666-SQD (200 amp, 3-phase, 3-wire)
1007670-SQD (200 amp, 3-phase, 4-wire)

SWITCHBOARD APPARATUS CO.

METER CONNECTION DEVICES

(All units listed are meter-breaker combinations)

**SINGLE PHASE OVERHEAD
OUTDOOR**

(120/240 volt, single-phase, 3-wire)

MSPNLBD (320 amp)

U4501-11 (320 amp)

**The above units are designed for
stationary and mobile trailers.**

**POLYPHASE MODULAR METERING UNITS
INDOOR SWITCHBOARD TYPE (Note 4)**

200 amp/position (120/208 volt, 3-phase, 4-wire wye)

TMM3203 (Single unit with 100 amp fuse or breaker)

TMM3204 (Single unit with 200 amp fuse or breaker)

TMM3233 (Twin unit with 2-100 amp fuses or breakers)

TMM3234 (Twin unit with 1-100 amp and 1-200 fuses
or breakers)

TMM3244 (Twin unit with 2-200 amp fuses or breakers)

200 amp/position (277/480 volt, 3-phase, 4-wire wye)

TMM3603 (Single unit with 100 amp fuse or breaker)

TMM3604 (Single unit with 200 amp fuse or breaker)

TMM3633 (Twin unit with 2-100 amp fuses or breakers)

TMM3634 (Twin unit with 1-100 amp and 1-200 fuses
or breakers)

TMM3644 (Twin unit with 2-200 amp fuses or breakers)

TALON

METER CONNECTION DEVICES

(All units listed are 120/240 volt, single-phase,
3-wire meter-breaker combinations unless noted)

OVERHEAD

40405-02CH (200 A)

100 AMPS

UA2311-0PCH (2-position)

UA3311-0PCH (3-position)

UA4311-0PCH (4-position)

200 AMPS

UA2717-YPCH (2-position)

UA3717-YPCH (3-position)

UA4719-YPCH (4-position)

UA5719-KPCH (5-position)

UA6719-KPCH (6-position)

UAT417-0PZ (ringless)

UAT417-XPQG

TEMP POWER PANEL (125 A, Ringless)

TLXXXH2M (Pad Mount)

TLXXXH2P (Pedestal, back to back)

TLXXXHB (Bottom feed)

TLXXXHM (Pad mount)

TLXXXHP (Pedestal)

TLXXXHT (Top Feed)

THOMAS & BETTS *

METER CONNECTION DEVICES

(All units listed are 120/240 volt, single-phase,
3-wire meter-breaker combinations unless noted)

MM VERTICAL METER MODULES
INDOOR/OUTDOOR

125 amp/position

MM312RRL-TB (3-position)
MM412RRL-TB (4-position)

200 amp/position

MM320RRL-TB (3-position)
MM420RRL-TB (4-position)

125 amp/position (120/208 volt, 3-phase,
4-wire wye for use with single-phase meter:

M3M312RRL-TB (3-position)
M3M412RABRL-TB (4-position)
M3M412RBCRL-TB (4-position)
M3M412RACRL-TB (4-position)

200 amp/position (120/208 volt, 3-phase,
4-wire wye for use with single-phase meter:

M3M320RRL-TB (3-position)

MP METER PACK UNITS (continued)
ALL-IN-ONE-TYPE
INDOOR/OUTDOOR

125 amp/position

MP2122RRL-TB (2-position vertical)
MP3124RRL-TB (3-position, 2-high)
MP4124RRL-TB (4-position, 2-high)
MP5126RRL-TB (5-position, 3-high)
MP6126RRL-TB (6-position, 3-high)

POLYPHASE METER MODULES
INDOOR/OUTDOOR

200 amp/position (120/208 volt, 3-phase,
4-wire wye for use with single-phase meters)

M35M220RAB-TB (2-position vertical)
M35M320R-TB (3-position vertical)

200 amp/position (120/208 volt 3-ph., 4-wire, wye;
120/240 volt 3-ph., 4-wire, delta)

M37M120R-TB (1-position)
M37M220R-TB (2-position vertical)
M37M320R-TB (3-position vertical)

* Thomas & Betts is currently redesigning their entire line of modular metering equipment. The Catalog Numbers listed above are for the units that had been approved, but they are no longer being manufactured. If any of the above units are installed on new projects, contact System Meter for instructions.

TRANSFORMER RATED METER CONNECTION DEVICES

CROSS REFERENCE LIST

I. SINGLE-PHASE, 3-WIRE; 6-Terminal Socket (120/240 volt, 240/480 volt & Primary) (**Note 3**)

<u>Manufacturer</u>	<u>Catalog No.</u>
Anchor	RTSS6-63W-CH
Landis & Gyr	9807-8431
Meter Devices Co.	602U3010A6-166
Milbank	CE136

II. THREE-PHASE, 3-WIRE; 8-Terminal Socket (480 volt & Primary) (**Note 3**)

<u>Manufacturer</u>	<u>Catalog No.</u>
Anchor	RTSS8-73W-CH
Landis & Gyr	9807-8432
Meter Devices Co.	602U3010A8-165
Milbank	CE138

III. THREE-PHASE, 4-WIRE; 13-Terminal Socket (120/208 volt, 277/480 volt & Primary) (**Note 3**)

<u>Manufacturer</u>	<u>Catalog No.</u>
Anchor	RTSS13-13W-CH
Landis & Gyr	9807-8433
Meter Devices Co.	602U3010A13-160
Milbank	CE1313

- Notes: 1) All meter connection devices must have CECHA stamp.
2) All meter connection devices must have ringless covers.
3) The "Primary" listing indicates voltages greater than 600 volts.
4) The transformer rated devices listed above have maximum ratings of 600 volts and 20amps.

APPROVED CURRENT TRANSFORMER COMPARTMENTS

AMP	400A	3PH 4W	ACCT4-4TM
Electric	600A	3PH 4W	ACCT6-4TM
Company	800A	3PH 4W	ACCT8-4TM
Chicago	400A	1PH 3W	CT4001MF
Switchboard	400A	3PH 3W	CT4003MF
	400A	3PH 4W	CT4004MF
	600A	1PH 3W	CT6001MF
	600A	3PH 3W	CT6003MF
	600A	3PH 4W	CT6004MF
	800A	1PH 3W	CT8001MF
	800A	3PH 3W	CT8003MF
	800A	3PH 4W	CT8004MF
	1200A	3PH 4W	CT12001MF
	1600A	3PH 4W	CT16001MF
2000A	3PH 4W	CT20001MF	
ERICKSON	400A	3PH 4W	1182-5
		3PH 3W	1182-4
		1PH 3W	1182-3
	600 - 800 A	3PH 4W	283-5
		3PH 3W	283-4
		1PH 3W	283-3
	1200A	3PH 4W	CT124MF
		3PH 3W	CT123MF
		1PH 3W	CT121MF
	1600A	3PH 4W	CT164MF
		3PH 3W	CT163MF
		1PH 3W	CT162MF
	2000A	3PH 4W	CT204MF
		3PH 3W	CT203MF
		1PH 3W	CT201MF
2500A	3PH 4W	CT254MF	
	3PH 3W	CT253MF	
	1PH 3W	*	
GALVA	400A	3PH 4W	CE-404-13
	600A	3PH 4W	CE-604-13
	800A	3PH 4W	CE-804-13

APPROVED CURRENT TRANSFORMER COMPARTMENTS cont'd

GUS	400A	3PH 4W	1182-5
	600A	3PH 4W	*
	800A	3PH 4W	283-5
JEMISON	400A	3PH 4W	CTM434
	600A	3PH 4W	CTM834
	800A	3PH 4W	*
KINNEY	400A	3PH 4W	CTMF4034
	600A	3PH 4W	CTMF6034
	800A	3PH 4W	CTMF8034
	1200A	3PH 4W	184537
	1600A	3PH 4W	*
	2000A	3PH 4W	*
Power Distribution Equipment	1200A	3PH 4W	12034A
	1600A	3PH 4W	12101A
	2000A	3PH 4W	13122
	2500A	3PH 4W	2503
	4000A	3PH 4W	150318
SQUARED	1200A	3PH 4W	80246665R1
	1600A	3PH 4W	*
	2000A	3PH 4W	*
	4000A	3PH 4W	*
WESTING	1200A	3PH 4W	6659C37
	1600A	3PH 4W	*
	2000A	3PH 4W	*
	2500A	3PH 4W	*
	4000A	3PH 4W	*

NOTE * Vendor uses 1 drawing to illustrate multiple switch sizes.

**METER SOCKET MANUFACTURERS AND LOCAL
REPRESENTATIVES**

- | | |
|---|---|
| <p>1. Anchor Electric
(Division of Thomas & Betts Corp.)</p> <p>8155 T&B Boulevard
Memphis , TN 38125
(800) 888-0211</p> | <p>Joe Carroll - Product Manager
(800) 888-0211 Ext. 13669</p> <p><u>Local Representative</u>
Ed Kaestner
Ed Howard & Associates
1550 Higgins Road, Suite 131
Elk Grove Village, IL 60007
(847) 593-1400
(800) 782-5809</p> |
| <p>2. Chicago Switchboard Co. Inc.</p> <p>470 W. Wrightwood Ave.
Elmhurst, IL 60126
(630) 833-2266
www.chiswbd.com</p> | <p>Bill Eder – Vice President; Sales
Sid Jhaveri – Sales Engineer</p> |
| <p>3. Cutler Hammer</p> <p>601 Oakmont Lane
Westmont, IL 60559
(630) 789-5900</p> | <p>George Fiest - Sales Engineer
georgemfiest@eaton.com
(630) 240 - 3387</p> |
| <p>4. Durham Company</p> <p>P.O. Box 908
Lebanon, MO 65536
(417) 532-7121</p> | <p>Bob Taylor – OEM Sales Manager
btaylor@durhamcompany.com
Phone 417-533-3749</p> |
| <p>5. Electric City</p> <p>1909 S. Busse Highway
Mount Prospect, IL 60056
(847) 228-7666</p> | |
| <p>6. Electrical Products Corp. (EPC)</p> <p>3703 Melville Way
Anaheim, CA 92806
(714) 632 – 1293</p> | <p><u>Local Representative</u>
Electrical Marketing Group
Jack Brody
798 Maple Lane
Bensenville, IL 60106; (630) 860-1293</p> |

METER SOCKET MANUFACTURERS AND LOCAL REPS (Continued)

7. Erickson Electrical Equipment Co. Bruce Erickson – Product Engineer

475 Bonnie Lane
Elk Grove Village, IL 60007
(847) 640-7701

Local Representative
Hanke Co., Inc.
1860 Brummel Drive
Elk Grove Village, IL 60007
(847) 593-8500
Mark Franzen

8. General Electric Co. Al Heyne – Sales Engineer

2015 Spring Road
Oak Brook, IL 60521

(630) 573-3169
Shahid Sheikh
(630) 573-3468

9. Gus Berthold Electric Co. Chuck Berthold

1900 West Carroll Ave.
Chicago, IL 60612
(312) 243-5767

Rod Berthold

10. Illinois Switchboard Co. Bill Zastawny
Ed Zastawny

125 West Laura Drive
Addison, IL 60101
(630) 543-0910

11. Industrial Switchboard Mfg. Co. Anis Rahman – Vice President

64 East 14th St.
Chicago, IL 60605
(312) 362-0330

12. Jemison Electric Ralph Weger - President

P.O. Box 426
2 W. Woodstock St.
Crystal Lake, IL 60014
(815) 459-4060

METER SOCKET MANUFACTURERS AND LOCAL REPS (Continued)

13. Kinney Electrical Mfg. Co.

678 Buckeye St.
Elgin, IL 60120
(847) 742-9600

14. Landis & Gyr Utilities Services

(Division of Siemens Energy
& Automation, Inc.)
2800 Duncan Rd.
Lafayette, IN
(765) 742-1001
www.landisgyr.com/products

Local Representative

Fletcher-Reinhardt Co.
3105 Corporate Exchange Ct.
Bridgeton, MO 63044
(314) 506-0700
www.fr-electric.com

15. Brooks Utility Products

23847 Industrial Park Dr.
Farmington Hills, MI 48335-1197
(888) 687-3008
sales@brooksupg.com

Phil Dudley – Director of Sales

Steve Emrich – District Sales Manager
SEmrich@tydenbrooks.onmicrosoft.com

16. Midwest Electric Products

41 Woodford Ave.
Plainville, CT 06062
(866) 685-0577

Local Representative

Lake Michigan Sales, LLC
500 Oakwood Road
Lake Zurich, IL 60047
(847) 651-4975

17. Milbank Mfg. Co.

Callas/Kingsley Electrical Sales
845 Lively Blvd.
Wood Dale, IL 60191
(630) 595-7887
bn@ckelectricalsales.com

Bruce Nailor

Regional Sales Manager

Tom Harmon
tharmon@milbankworks.com

METER SOCKET MANUFACTURERS AND LOCAL REPS (Continued)

- 18. Murray Electrical Products**
(Division of Siemens Energy
& Automation, Inc.)

5400 Triangle Parkway
Norcross, GA 30092
(770) 326-2088
- Local Representative
Electrical Marketing Group
Robert Nejd
798 Maple Lane
Bensenville, IL 60106
(630) 860-9556
[rnejd@emginc.net](mailto:rnejdl@emginc.net)
- 19. Peterson Electric Panel Mfg. Co.**

5550 McDermott Dr.
Berkeley, IL 60163
(708) 449-2270
- Rick Todd Jr. – Vice President
rrtodd@petersonpanel.com
- 20. Siemens Energy & Automation,
Inc., Talon, and Murray**

5400 Triangle Parkway
Norcross, GA 30092
- Product Application Manager

William Rose, LMV Products
(770) 326-2098
William.rose@siemens.com
- 21. Square D Company**

3050 Finley Rd.
Downers Grove, IL 60515
(847) 273-2088
- 22. Switchboard Apparatus Co.**

2820 South 19th Ave.
Broadview, IL 60153
(708) 450-0990
- Dale Hoppensteadt
Kevin Hoppensteadt
Sales4@sai-aps.com
- 23. Thomas & Betts Corp.**

113 Fairfield Way, Suite #207
Bloomington, IL 60108
- Tom Scott – Sales Representative
(630) 894-2010
Andy Rausch - Sales Representative
(630) 416-8121