



APRIL '21

MACHINERY REGISTER



WE ARE EXPANDING - RUTLAND

We are thrilled to announce that we are opening a new depot in Rutland. Please visit our Careers page on our website to view the exciting job opportunities we have available.

www.irelandsfarmmachinery.co.uk

Carrington | Sutterton | Market Rasen | Rutland

AGRICULTURAL MACHINERY



NEW

KUBOTA M7152
Reference Number: 14769
 c/w 50k powershift gearbox with creep, front suspension, air trailer brakes, cab suspension (JP)



EX DEMO

KUBOTA M7152 TRACTOR (2018)
Reference Number: 14672
 c/w 50k powershift gearbox with creep, front suspension (PC)



JOHN DEERE 6140R (2014)
Reference Number: 14898
 c/w 4wd, autoquad 40kph, TLS, cab suspension, air trailer brakes, air seat, air con, autotrac ready (SG)



JCB FASTRAC 4220 c/w KNIGHT DEMOUNT SPRAYER (2017)
Reference Number: 15603
 c/w JCB 3420 current hours, Knight 2000L demount sprayer (1994) (DD)



JCB 535-95 (2018)
Reference Number: 15186
 c/w 9.5M reach, 3.5 tonne lift, approx 3,500 hrs, tyres 40%, VGC. (SG)



NEW

NEW KUBOTA RTV-X1100
Reference Number: 11085
 c/w front screen, wiper/washer, glass doors, rear screen, heater, internal light, beacon (JP)



NEW

BAILEY 20T BEAVERTAIL LOWLOADER
Reference Number: 13460
 c/w 8500+1500mm, parking brakes, strap points, EN8 towing eye.



BAILEY 20T FLAT DECK LOWLOADER
Reference Number: 15305
 c/w full chequer plate floor, 2m track, 3 x 10 stud axles, steering rear axle.



NEW

NEW BAILEY 15T LOWLOADER
Reference Number: 12166
 c/w hyd. brakes, parking brakes, strap points, heavy duty EN8 towing eye, hardwood floor.



BAILEY 14T FLAT TRAILER (2019)
Reference Number: 14658
 c/w chequer plate floor, 1900mm track, 10 stud axles, air brakes, rope hooks, toolbox, rear loops.



BAILEY 20T BEETEAPER TRAILER (2019)
Reference Number: 15721
 c/w single ram, air brakes, extra rear lights, swivel draw bar (BF)



BAILEY 20T BEETEAPER TRAILER (2019)
Reference Number: 13793
 c/w arched full front window, rollover sheet, grain chute, air brakes.



Ben Ford (BF): 07469 853763 Daryl Dunn (DD): 07881 106298 Josh Pennell (JP): 07469 850502

Gary Halliday (GH): 07502 336581 Paul Clayton (PC): 07387 023444 Stuart Gosling (SG): 07824 317357

Jonathan Ireland (JI): 07778 372606 Huw Price (HP): 07917 496849

AGRICULTURAL MACHINERY



BAILEY 16T SILAGE TRAILER (2020)
Reference Number: 14516
 c/w air & oil brakes, arched full front window, beacon, grain chute, mudguards and flaps, hi vis strips.



BAILEY 16T TB TRAILER (2020)
Reference Number: 14529
 c/w hyd. door, sprung drawbar, 2m track, easy sheet, grain chute, air and oil brakes, extra rear lights.



BAILEY 16T ROOT TRAILER (2020)
Reference Number: 14490
 c/w hyd. door, sprung drawbar, 1900mm track, 3'9" sides, front flaps, air brakes.



BAILEY 14T ROOT TRAILER (2020)
Reference Number: 14644
 c/w hyd. door, sprung drawbar, 1900mm track, 3'9" sides, easy sheet, grain chute, air and oil brakes.



BAILEY 14T ROOT TRAILER (2017)
Reference Number: 14477
 c/w hyd. door, sprung drawbar, rear towing loops, rollover sheet, 1920mm track, 3'9" sides, rear beacon.



WEEKS 15T DUMP TRAILER
Reference Number: 14032
 c/w commercial axles, hydraulic brakes, hyd. rear door, Sprung Drawbar, LED lights (JP)



FLAT TO FLOOR LOWLOADER
Reference Number: 15501
 c/w - 15 feet flat, road lights, hydraulic brakes, hard wood floor, twin wheels (JP)



BAILEY SILAGE KITS (USED)
Reference Number: 3083
 All 22' long to fit either Bailey 14T roots or 16T TB's, square back or flap back, Tapered or square bodies (SG)



NEW BAILEY 2000L FUEL BOWSER
Reference Number: 10169
 c/w high speed running gear, mudguards, brakes, screw jack/ jockey wheel (JP)



NEW BAILEY 15000 LITRE WATER BOWSER
Reference Number: 12167
 1000L/min pump on 3" outlets, 2x extra long 3" hoses (JP)

WE HAVE A WIDE RANGE OF USED TRAILERS AVAILABLE.

PLEASE CONTACT US TO DISCUSS YOUR REQUIREMENTS: 01205 480460



Ben Ford (BF): 07469 853763 Daryl Dunn (DD): 07881 106298 Josh Pennell (JP): 07469 850502
 Gary Halliday (GH): 07502 336581 Paul Clayton (PC): 07387 023444 Stuart Gosling (SG): 07824 317357
 Jonathan Ireland (JI): 07778 372606 Huw Price (HP): 07917 496849



AGRICULTURAL HIRE FLEET



JOHN DEERE



TELEHANDLERS & ATTACHMENTS



POWER HARROWS 4M & 6M



KVERNELAND PLOUGHS



SPEARHEAD 4.6 MULCHER



TRAILERS



CONTRACT TIPPING TRAILER



SUTON CONTRACTOR ROAD SWEEP BRUSH



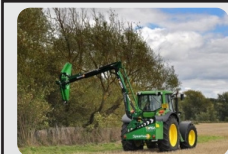
SPEARHEAD TWIGA 595 HEDGECUTTER



ROTAVALATORS



POTATO CULTIVATOR 36" or 34" ROWS



SPEARHEAD QUAD SAW

For Hire enquiries please contact Stuart:
Office: **01205 480460** Mobile: **07824 317357**
Email: stuart@ifmgroup.co.uk

ROTOR BALANCING & VIBRATION ANALYSIS

*No need to remove rotors or shaft!
Reducing labour and down time!*

Ensure your rotors, flail mowers/ mulchers, fans, shafts and pumps are operating smoothly while running. Wear and tear can unbalance a machine resulting in short machine and bearing life!

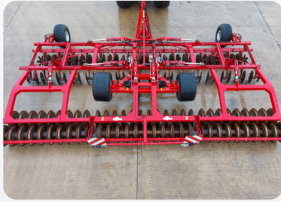
ON FARM SERVICE AVAILABLE

For further information and a competitive price, call us on:

01205 480460



AGRICULTURAL MACHINERY



HORSCH JOKER 8RT (2017)
Reference Number: 14739
 c/w rear double steel disc packer (18 months old) full set of new cultivation discs, scharmuller ball hitch, VGC (BF)



EX DEMO

KVERNELAND U DRILL (EX DEMO)
Reference Number: 10047
 c/w Cat 3 cross shaft. Strong compact central tube main frame, 3m transport width **£59,500 +VAT (PC)**



EX DEMO

KVERNELAND LS PLOUGH
Reference Number: 11537
 c/w 5 furrow, No. 28 Bodies, quick fit points, hyd. front furrow, 18" rear disc, maize skimmers (SG)



EX DEMO

KVERNELAND LO 300/100 MAX PLOUGH (EX DEMO)
Reference Number: 15435
 c/w 5+1 furrow, on-land/in-furrow, unique transport headstock (GH)



5 FURROW GREGOIRE BESSON PLOUGH (4+1)
Reference Number: 15409
 C/W 4+1, 160hp Headstock, 90cm Point to point (BF)



GREENLAND 3M POWER HARROW
Reference Number: 15547
 c/w 3M working width, flex coil & star cleaner. (JI)



KVERNELAND 6M POWER HARROW HARROW (2018)
Reference Number: 10306
 c/w 24 rotors, heavy duty power harrow for tractor up to 400HP (SG)



SPECIAL OFFER

GRANGE 4M LDL (EX DEMO)
Reference Number: 14028
 c/w 8x low disturbance legs, 8x front cutting discs, 4m hydraulic folding toothed packer (BF)



NEW

NEW KVERNELAND FLATLINER 350
Reference Number: 11555
 c/w 5 pro lift legs, "D" packer with scrapers, 3.5m wide (DD)

CALOR

WE ARE STOCKISTS FOR CALOR GAS AT ALL DEPOTS
CALL YOUR LOCAL DEPOT FOR CONTACT-FREE COLLECTION.



CARRINGTON - 01205 480460

SUTTERTON - 01205 460600 MARKET RASEN - 01673 842222

AGRICULTURAL MACHINERY

Kubota Service Kits

Available for all Kubota machines.

PRICES START FROM
£37.15+VAT



VICON RS-XL FERTILISER SPREADER (2007)
Reference Number: 15519
c/w 2500l hopper capacity, hopper cover, road lights, rota flow (DD)



VICON ROTAFLOW RS-L FERTILISER SPREADER
Reference Number: 15551
c/w - 800 litre hopper with extensions, 8 vanes per disc (JP)



HARDI 12M MANUAL FOLDING SPRAYER
Reference Number: 15544
c/w 600l, manual boom raise (JI)



NEW

GRANGE MACHINERY LIQUID FERTILISER APPLICATOR
Reference Number: 12463
Stainless steel or plastic tanks, full application kit for 3m - 8m drill (JP)



EX DEMO

STRIMECH WRAPPED BALE HANDLER
Reference Number: 12225
c/w WBH01, check valve, 0.80m height, 1.40m depth (PC)



RITCHIE SILAGE GRAB
Reference Number: 13508
c/w JCB Q fit fittings, hydraulic over the top grab arm. (DD)



SOLD

EX DEMO VICON RV5216 BALER
Reference Number: 629
c/w 5 endless belt, banked greasing station, Isobus Baler, 2 YEARS FULL PARTS & LABOUR WARRANTY (JP)



SWIFTLIFT ELEVATOR 30FT WITH 7.5FT EXTENSION
Reference Number: 11929
c/w electric slew, electric height adjustment, elec. forward/reverse (JP)



EX DEMO

SWIFTLIFT 900 EXTENDO ELEVATOR
Reference Number: 9034
c/w 3 phase electrics, variable speed, auto slewing platform (DD)



Ben Ford (BF): 07469 853763 Daryl Dunn (DD): 07881 106298 Josh Pennell (JP): 07469 850502

Gary Halliday (GH): 07502 336581 Paul Clayton (PC): 07387 023444 Stuart Gosling (SG): 07824 317357

Jonathan Ireland (JI): 07778 372606 Huw Price (HP): 07917 496849

AGRICULTURAL MACHINERY



NEW

**KUBOTA DMC 6032N MOWER
CONDITIONER**
Reference Number: 10573
C/W 3.2m working width, 3 point
linkage mounting (BF)



SPEARHEAD MULTICUT 460
Reference Number: 2119
c/w hydraulic folding, hyd. depth
control, 6 blades per rotor, wide angle
PTO, road lights (PC)



SPALDINGS OFFSET FLAIL MOWER
Reference Number: 13098
c/w LH + RH offset, side to side offset,
2.2m working width, adjustable rear
roller (JP)



**EX HIRE SMI 200 BIG CUTTER FLAIL
MOWER**
Reference Number: 1414
c/w hammer flails, righthand offset,
wide angle PTO both ends (DD)




RECO FERRI 2.0 OFFSET MOWER
Reference Number: 13789
c/w 2m working width, Left hand
offset, Flails 40% good, New roller
bearings (JP)



**40" LAWNFLITE RIDE ON MOWER
(2006)**
Reference Number: 15484
c/w 40 Inch Deck, Rear Collector,
Kohler Command 20 Engine (BF)



BOMFORD B577 REACH MOWER
Reference Number: 15387
c/w 5.7m reach, 1.2m head, boot flails
50%, cable controls (PC)



20 INCH HYDRAULIC DRIVEN FLAIL
Reference Number: 1713
c/w Roller, parallel linkage for contour
following, never used, hydraulic
driven (JI)



3 POINT LINKAGE WHEEL KIT
Reference Number: 13409
c/w 3 point linkage mounted,
adjustable height, 77 inch wheel
spacing, BKT 5.00-8 tyres (BF)



**MACLOUSIS FRONT MOUNTED
ONION TOPPER**
Reference Number: 15441
c/w front mounted, 540 PTO drive,
1.5m cutting width (DD)



**KUBOTA BX231 COMPACT
TRACTOR (2018)**
Reference Number: 13839
Immaculate condition, 95 hours (HP)

Please visit
www.ifmgroup.co.uk
to view all our
used machinery



Ben Ford (BF): 07469 853763 Daryl Dunn (DD): 07881 106298 Josh Pennell (JP): 07469 850502
Gary Halliday (GH): 07502 336581 Paul Clayton (PC): 07387 023444 Stuart Gosling (SG): 07824 317573
Jonathan Ireland (JI): 07778 372606 Huw Price (HP): 07917 496849



CROP PROTECTION

FOR PROFESSIONAL USE ONLY*

TERROR KITE KIT

Both kites + 7 metre pole



£72.00
+VAT

Quiet and extremely effective, the Terror Kite and Terror Hawk are always on patrol even in the lightest breeze.

DOUBLE BANGER ROPES



£32.00
+VAT

These unique double banger ropes (every other bang is a double), is designed to emulate a shotgun in the field and to make birdscaring more effective.



SCATTERBIRD MARK 4

The Scatterbird MK4 is the next generation of gas powered bird scarers. Like it's predecessor, the Scatterbird MK4 is a sturdy, purpose built bird scaring gas gun designed specifically to meet the needs of the farmer. The Scatterbird range has for many years set the industry standard for durability.

£380.00
+ VAT



Contact us for a competitive quote on all your genuine Simba and Great Plains wearing parts.



Carrington: 01205 480460 | Sutterton: 01205 460600 | Market Rasen: 01673 842222

Long-lasting quality, guaranteed. **Every time.**



Irelands Lincolnshire Groundcare



Here at Irelands we are now selling Kubota Groundcare, Baroness Machinery, Spearhead Groundcare, Wiedenmann and Campey Groundcare Equipment. We are offering a complete range for the professional groundsman, local authority or contractor.

In spite of the current Covid situation, we would be happy to talk you through our product range and when local restrictions allow, we can show you the range in person.



GROUND CARE MACHINERY FOR SALE

	<p>KUBOTA GR1600 II RIDE ON MOWER</p> <p>The GR1600 diesel garden mower outperforms much larger petrol equivalents yet is extremely frugal, reliable and requires little routine maintenance. Shaft driven HST transmission with single pedal forward/reverse, gas assist deck lift, easy reach dial type adjustment. Optional mulching deck or collector.</p>
	<p>KUBOTA GR2120 RIDE ON MOWER</p> <p>With its high horsepower, the 4WD diesel cut and collect GR2120-II meets the need of amateur or commercial garden requirements alike. The GR2120-II incorporates Kubota's revolutionary Glide Steer system which enables it to turn more sharply than a conventional mower. Other features include an easy dial cut height adjustment, hydraulic power steering, HST and a hydraulic mower lift.</p>
	<p>KUBOTA ZD1211-DIESEL ZERO TURN MOWER</p> <p>All new ZD1211 has been engineered from the ground up to deliver quality, performance, comfort and durability. It has a 3-blade, 140mm deep deck featuring a flat design and Kubota's unique baffling system. With a 24.8HP engine hydrostatic transmission and a 60" cutting deck.</p>
	<p>KUBOTA ST341 COMPACT TRACTOR</p> <p>The ST341 compact tractor is impressively powerful and quick, delivering outstanding efficiency and enhanced productivity. Featuring a powerful, economic and extremely quiet 34HP 4-cycle 3-cylinder E-TVCS diesel engine, it has 3-range hydrostatic transmission, high capacity hydraulics with 3 remote control valves to meet a wide variety of professional applications.</p>
	<p>ELIET SUPER PROF CROSS COUNTRY MAX SHREDDER</p> <p>The Eliet Cross Country reaches the highest levels, very few places are unreachable for this highly manoeuvrable machine with its tracked transmission which utilises pivot spin, operating each track separately.</p>

The above is just a small selection of the equipment we have in stock.
Get in touch- Huw Price 01205 480460/ 07917 496849 huw@ifmgroup.co.uk

VIEW OUR GROUND CARE HIRE FLEET ON OUR WEBSITE www.irelandsgroup.co.uk

OTHER MACHINERY WE HAVE FOR SALE

Tractors

- TRACTOR HIRE AVAILABLE FOR HIRE LONG OR SHORT TERM JOHN DEERE 8285R, 7930, 7830, 6210R, 6190R, 6930, 6830, 6150R, 6140R, 6630, 6125R, 6430.
- JCB FASTRAC 4220 c/w KNIGHT DEMOUNT SPRAYER (2017)
JCB FASTRAC 4220 c/w KNIGHT DEMOUNT SPRAYER (2017) c/w 3420 current hours, 1 set of 600/70 R30 BKT tyres (75%), 1 set of 380/80 R38 Michelin Agribib row crops (like new), front linkage, front and rear suspension, 4 wheel steer, LED work lights, air suspended leather drivers seat, leather passenger seat, 4 x electric spools, VT transmission, JCB 4000 touch screen, auto steer ready, aircon/climate control, electric mirrors, 1 years manufactures warranty left. Serviced by main dealer every 500hrs. Knight 2000L demount sprayer (1994) c/w stainless steel tank, PTO drive pump, induction hopper, 24m, 4 manual sections, auto rate control (via speed), tri nozzle holder, manual sight gauge.
- **KUBOTA TRACTORS** - NEW KUBOTA M7172 TRACTOR (170HP), KUBOTA M7152 (150HP), KUBOTA M125GX III C/W QUICKE X46 LOADER, EX DEMO KUBOTA M5111 TRACTOR (110HP), KUBOTA M125GX-IV 4WD TRACTOR (133HP), KUBOTA M135GX-IV 4WD TRACTOR (143HP). KUBOTA M7132 SERIES (130HP), KUBOTA M115GX-IV 4WD TRACTOR (123HP), KUBOTA M105GX-IV 4WD TRACTOR (111HP), KUBOTA M-95 GX IV TRACTOR (100HP), KUBOTA M5091 TRACTOR (95HP), KUBOTA M5101 NARROW CAB (105HP), KUBOTA M5091 NARROW CAB (93HP), KUBOTA M5071 NARROW CAB (73HP), KUBOTA M4072 SERIES 4WD COMPACT TRACTOR, KUBOTA M4062 4WD COMPACT TRACTOR, KUBOTA L2602 TRACTOR, KUBOTA L2501 TRACTOR, KUBOTA L2421 TRACTOR, KUBOTA L2351 TRACTOR
- CASE PUMA WEIGHT CARRIER

Trailers

- TRAILER HIRE AVAILABLE FOR HIRE LONG OR SHORT TERM, BAILEY FLAT, MONO, BEETEAPER, GRAIN, SILAGE TRAILERS
- NEW BAILEY 2000 LITRE FUEL BOWSER, Fully bunded removable tank, top locking panel, 85 Litre minute pump, c/w high speed running gear, mudguards, brakes, screw jack/ jockey wheel, 50 mm ball hitch, LED lighting
- NEW BAILEY 15000 LITRE WATER/FERTILISER BOWSER c/w 16 Tonne chassis, 10 stud commercial axles, air and oil braking, mudguards, side and rear cabinets, choice of wheels 385-65 x 22.5 super singles or flotation tyres. Contains pipework and Lombardini Kohler diesel engine and pump in rear cabinet. Tank size 15,300 litres.
- NEW BAILEY 15T LOWLOADER 6500mm long + 1500mm beavertail c/w hydraulic brakes, parking brakes, strap points, heavy duty EN8 towing eye, skid & skid carrier, hardwood floor, lashing rings in the floor, commercial axles
- NEW BAILEY FLAT PALLET TRAILER c/w air & oil braking, sprung draw bar, rear beacon, extra side lights, super single or flotation tyres, head board & length to your requirement.
- BAILEY 8T FLAT TO FLOOR LOWLOADER 6M LONG 2.5M WIDE C/W INDEPENDENT HYDRAULIC BRAKES, PARKING BRAKES, ROPE HOOKS, HEAVY DUTY EN8 TOWING EYE, CHEQUER PLATE FLOOR, LOADING RAMPS, MUDGUARDS, LED LIGHTS, REAR FLAPS, BEACON.

NEW

- BAILEY TRAILERS TB RANGE (6-24 TONNE), BAILEY BEETEAPER TRAILERS, BAILEY ROOT TRAILERS, BAILEY HIGH LIFT TRAILER, BAILEY BALE & PALLET TRAILER, BAILEY BEAVERTAIL LOW LOADER, BAILEY FLAT DECK LOW LOADER, BAILEY 15T LOW LOADER, BAILEY FLAT PALLET TRAILER, BAILEY CONTRACT DUMPER, BAILEY DROP DECK LOW LOADER, BAILEY CONTRACT TIPPER, BAILEY 8T FLAT TO FLOOR LOW LOADER
BAILEY SILAGE KITS

Telescopic Handlers + Forklifts & Attachments

- TELESCOPIC HANDLERS & FORKLIFTS & ATTACHMENTS FOR HIRE AVAILABLE FOR HIRE LONG OR SHORT TERM JCB 531-70, 541-70 & ATTACHMENTS

Ploughs

- KVERNELAND PLOUGHS FOR HIRE
- NEW KVERNELAND 2500 PLOUGH c/w 100 point to point, isobus, maize skimmers, hydraulic depth wheel 420/55 17.5
- NEW KVERNELAND RN PLOUGH Available from 5-9 furrows c/w No 28 bodies, manure skimmers, knock on points, 18" rear disc coulters, depth and transport wheel, shock valve kit, 200x200 frame, centre mounted wheel, manual width adjustment
- NEW KVERNELAND RW PLOUGH Available from 7 – 12 furrows c/w shearbolt protection, hydraulic vari-width, infurrow and on land, 100cm interbody clearance, ATS controls, load sensing, No 28 bodies, quick fit points, 18" rear disc coulters
- NEW KVERNELAND LO 85/300 6+1 FURROW PLOUGH c/w on land in furrow, no. 28 bodies, knock on points, 18" rear disc, skimmers, 12" double depth wheel,
- NEW KVERNELAND LD 85/300 5+1 FURROW PLOUGH c/w 28 bodies, knock on points, 18" rear disc, skimmers, 12" depth wheel
- NEW KVERNELAND LD 85/200 4+1 FURROW PLOUGH c/w no. 28 bodies, knock on points, 18" rear disc, skimmers, 12" depth wheel

Cultivation Equipment

- GRANGE MACHINERY HD TRACK ERADICATOR c/w CAT 3 & CAT 4 frame, low disturbance legs can be moved to suit the wheel centres required, hydraulic front disc system, choice of rear hitch attachment, shear bolt and auto reset protection available
- GRANGE MACHINERY CLOSE COUPLED TOOLBAR c/w 3m track eradicator working width, x4 low disturbance loosening legs with a range of 300mm working depth
- GRANGE MACHINERY LOW DISTURBANCE TOOLBAR (LDT) available in 3m, 4m and 6m working widths, X6/8 Low Disturbance loosening legs with a range of 300mm working depth
- GRANGE MACHINERY LOW DISTURBANCE LOOSENER (LDL) c/w rear packer, available in 3m and 4m working widths, loosening legs with a range of 300mm working depth
- KVERNELAND QUALIDISC PRO compact disc harrow: from 2.5 to 7 meter Stubble cultivation is of major importance within conservation tillage
- KVERNELAND FLATLINER 350
- KVERNELAND CTC CULTIVATOR
- KVERNELAND CLC PRO
- KVERNELAND TURBO
- KVERNELAND TLD – VIBRO-CULTIVATOR
- KVERNELAND TLG CULTIVATOR
- KVERNELAND ACCESS+ Seedbed harrow for combination with heavy seed drills

Rotavators

- ROTAVATOR HIRE

Power Harrows

- KVERNELAND HIRE POWER HARROWS AVAILABLE FOR HIRE LONG OR SHORT TERM.

- NEW KVERNELAND 6M HYDRAULIC FOLDING NG35 POWER HARROW c/w hydraulic folding 4m, 5m or 6m packer roller, side limiting plates

NEW KVERNELAND 3 & 4M NG-S & H SERIES POWER HARROWS c/w 3m or 4m ridged, quick fit tines packer roller, side limiting plates

Subsoilers

- HIRE SUBSOILERS AVAILABLE FOR HIRE LONG OR SHORT TERM NRH SUBSOILERS

- NRH TRAMLINE BUSTER NRH Tramline Buster, 2 adjustable legs, 3 point linkage mounting, 3m transport width, manual adjust 10.0/75-15.3 rear depth wheels.

- KVERNELAND SUBSOILER DTX

- KVERNELAND SUBSOILER FLATLINER

Rolls

- NEW NRH 12.3 M HEAVY DUTY ROLLS 24 Cambridge rolls and breaker rings available

- NEW NRH 8.3M HYDRAULIC FOLDING 24 heavy duty rolls, choice of plain, 24" rings and breaker rings and front paddle

- NEW NRH HEAVY DUTY 6.3M HYDRAULIC FOLDING 24 choice of plain, 24" rings and breaker rings and front paddle

- NEW NRH 6.3M HYDRAULIC FOLDING 24" RINGS c/w breaker

- SIMBA PRESS ROLL WITH LEADING TINES Simba press rolls, 1995, 4m working width, cast ring double packer, leading fins, hydraulic drawbar for depth and transport, transport wheels, rear drawbar, 2 spare transport wheels

Drills

- NEW KVERNELAND TS EVO 6M TINE DRILL c/w Signus tramline control, pre emergence markers, hydraulic fan, hydraulic

- NEW KVERNELAND I-DRILL PRO 3M POWER HARROW COMBINATION DRILL c/w 3m NGH Power Harrow, CX2 coulters, Signus tramline control, hydraulic fan, press wheels with scrapers, 1800 ltr hopper, pre emergence markers, track eradicators

- KVERNELAND OPTIMA MAIZE DRILL Call or Email for more details and options

- KVERNELAND MONOPILL PRECISION DRILL Kverneland Monopill precision drill, available in 12,18 or 24 rows 45cm or 50cm row width, electric or mechanical drive

- ACCORD 8 ROW OPTIMA MAIZE DRILL C/W front accord tank for fertiliser application with land wheel drive metering unit, hydraulic drive pneumatic fan on front tank, 3 point linkage mounted drill with hydraulic fold, 8 rows (adjustable) with tungsten tip coulters, manual depth control, hydraulic bout markers, road lights, rear press wheels, PTO drive pneumatic fan, All pipes in good order and drill will go straight to work.

- RANSOMES NORDSTEN 3M LIFT O'MATIC DRILL c/w hoe coulters, rear harrow, markers, single track eradicators, has been used for drilling cereals, peas, beans, maize and pheasant cover.

Combines & Corn Equipment

- NEW LISHMAN TROUBLE DRY & EXTRA TROUBLE DRY SPEARS FOR HOT SPOT AERATION Trouble dry 15 tonnes in an area 10 square, extra trouble dry 35 tonnes in an area 15 square, spears are 7'6" high, single phase.

Fertiliser Spreaders

KVERNELAND FERTILISER SPREADERS - KVERNELAND EXACTA TLX GEOSPREAD FERTILISER SPREADER, KVERNELAND TL1875 GEOSPREAD FERTILISER SPREADER, KVERNELAND EXACTA CL GEOSPREAD FERTILISER SPREADER, KVERNELAND EXACTA TLX GEOSPREAD FERTILISER SPREADER, KVERNELAND EXACTA TL GEOSPREAD FERTILISER SPREADER, KVERNELAND EXACTA TL FERTILISER SPREADER, KVERNELAND EXACTA CL FERTILISER SPREADER, KVERNELAND EXACTA EL FERTILISER SPREADER, KVERNELAND EXACTA HL FERTILISER SPREADER

GRANGE MACHINERY LIQUID FERTILISER APPLICATOR Stainless steel or plastic tanks, front mounted tank sizes: 600L, 1,000L up to 1,500L, full application kit for 3m – 8m drill, hydraulic or electric pumps, nitro band spray, coulters injection system, road light kit, choice of colour.

STOCKS FAN JET BRACKET Stocks fan jet bracket to fit a Bateman sprayer, in like new condition.

Sprayers

-VICON iXDRIVE SELF-PROPELLED SPRAYER

- NEW VICON ITRACK T4 TRAILED SPRAYER

- VICON iXter B MOUNTED SPRAYER

- VICON ITRACK T SERIES

- VICON IXTER A MOUNTED SPRAYER

- VICON IXTA FRONT TANKS

- ROGATOR RG645B SELF PROPELLED SPRAYER (2012) C/W 5000 litre tank + clean water tank, 36 meter steel tri-fold booms which includes break back, in cab hydraulic adjusting track widths, induction hopper with can rinse and hopper rinse, slug pelleter, hydrostatic transmission, air conditioning, radio, passenger seat, PPE cupboard.

Onion Equipment

- KONNINGS ONION PLANTER FOR HIRE, SAMON ONION TOPPER FOR HIRE, SAMON ONION WIND ROWER FOR HIRE, KONINGS

ONION PLANTER FOR HIRE

Boxes & Chitting Equipment

- WOODEN FLOORING PANELS c/w 10 inches high, 70 inch x 57 inch per pallet/section, approx 120 available although can be split if needed.

- CHITTING TRAYS

Vegetable Equipment

- BASELIER TOPPER c/w 2 Row, 36 inch rows, front and rear mount, depth wheels, 2005 but has done no more than 200 Acre.

- NEW BAILEY FLAT VEG PALLET TRAILERS, HIGH SPEED AXLES Air & oil braking, sprung draw bar, rear beacon, extra side lights, super single or flotation tyres, head board & length to your requirement.

- STANDEN T2 OMEGA POTATO HARVESTER (2017) c/w full width digging with centre share, centre discs were supplied loose, in line 4 man picking table, water kit, windrow kit, wheel drive, hydraulic web drives, automatic machine levelling, 10inch monitor with three cameras, touch screen control system, 50mm and 45mm webs, Omega cleaning system.

Wheels & Tyres

- ALLIANCE TRACTOR RIMS AND TYRES Fronts: 330/90R46 - Rears: 380/90R46 - 8 stud rims.
- DOUBLE COIN 435/50R 19.5 TYRES C/W 10 stud rims, tyre wear (90% Good) 29 full sets available.
- MICHELIN TRACTOR RIMS AND TYRES Fronts: 380/85R30 - Rears: 380/90R46 (40% Worn) - 10 stud rims
- TRELLEBORG TRACTOR RIMS & TYRES Fronts: 340/85R38 - Rears: 380/90R54 (20% worn) - 10 stud rims

Potato Cultivation & Equipment

- HIRE A POTATO CULTIVATOR SEE OUR HIRE LIST FOR HIRE OF POTATO INTER ROW CULTIVATORS
- BASELIER HF6FKV550 HYDRAULIC FOLDING BED FORMER (2007) C/W 72" Bed forming hoods on parallel linkage with spring loading, stainless steel hoods and granular application pipes and spreader plates (tank not included), Tungsten faced hook tines done only 50 acres, hydraulic disc marker arms, heavy duty gearbox with Auto-Reset protection, stainless steel front plate and inspection hatches, rotors been upgraded to 60mm from 50mm for increased durability, LHS is still original 50mm but machine comes with a brand new 60mm rotor shaft. Condition of both machine and paintwork is excellent- machine is ready to get to work.
- STRUIK TOPPER c/w 2 x 36inch rows, depth wheels, (depth wheels shown are not the ones supplied) front and rear mount.
- ORION POTATO BAG STITCHER c/w electric conveyor belt, in built compressor, stitching unit.
- RUMPTSTAD CULTIVATOR c/w 2 x 36inch beds, hook Tines 60% good, depth wheels, good condition for age.
- STANDEN T2 OMEGA POTATO HARVESTER (2017) c/w full width digging with centre share, centre discs were supplied loose, in line 4 man picking table, water kit, windrow kit, wheel drive, hydraulic web drives, automatic machine levelling, 10inch monitor with three cameras, touch screen control system, 50mm and 45mm webs, Omega cleaning system.

Elevators & Conveyors

- NEW SWIFTLIFT EXTENDO 600 ELEVATOR Ex demo Swiftlift Extendo 600 Elevator c/w 3 phase electrics, variable speed drive, automatic slewing platform, circular hopper, drawbar, power transmission.
- SWIFT LIFT SAFE DOWN ELEVATOR EXTENSION Swift Lift safe down elevator extension.
- NEW SWIFTLIFT INTERSTORE CONVEYORS singles or up and over double conveyors up to 61'8" (photos for information only-not actual conveyors).

Grass Machinery

- HIRE FLAIL MOWERS AND MULCHERS Hydraulic offset, front and rear, batwing mulchers.
- SPEARHEAD EXCEL 650 MOWER Spearhead Excel 650 Mower (1998) 1.25 Meter Cutting Head, 6.5 Meter Reach, Hammer Flails 50% wear, 3 point linkage mounted, PTO Driven Joystick and Lever Controls
- NEW SPEARHEAD 460 MULCHER c/w 6 blades per rotor, 8 wheels, hyd depth control, wide angle PTO
- NEW SPEARHEAD MULTICUT 430 4.3m working width, heavy duty gearbox, rear castor wheels puncture resistant, 6 x heavy duty cutting blades (2 per rotor)
- NEW VICON EXTRA 628T DISC MOWER CONDITIONER 2.25M centre suspended design enables fast and precise adaptation to ground contours
- NEW VICON ANDEX ROTARY RAKE new generation proline single rotor rake, 3.9m
- NEW VICON 524H TEDDER c/w 4 rotor tedder, 5.2m wide

Hedgecutters & Reach Mowers

- NEW SPEARHEAD TWIGA 600 6M REACH MOWER Standard Specification Includes 3 point linkage mounted, parallel arm geometry, independent hydraulic system, hydraulic slew and safety break away, 1.2m MP2 flail head, hydraulic proportional controls
- SPEARHEAD TWIGA 470 4.7M REACH Three Point Linkage Mounted, 60HP Tractor, Cable Controls, MP1 Head 1.2M, T Flail.(Please note photo of 5 m machine)
- SPEARHEAD QUAD SAW For Cutting Branches off trees and hedges, fits all hedge cutters

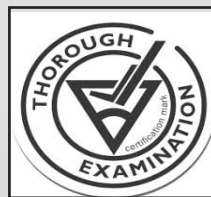
Hire Items

- HIRE KONINGS 5 ROW ONION PLANTER 72" wheelings, pto agitation
- HIRE PELICAN VEGETABLE PLANTER 2, 3, 4, 5 OR 6 ROW Adjustable planting width, will take modules, blocks or bare roots c/w tray carousels. Can be single or tandem frame.
- JCB 536-70 TELESCOPIC FORKLIFT c/w attachments
- HIRE SAMON ONION WINDROWER c/w share or rotating bar lifting, 2 webs, rear roller, rear defectors
- SAMON ONION TOPPER c/w hydraulic depth wheels, belt driven. 60" or 72" wheelings
- STANDEN POWERVATOR 3m c/w L blades, hood, rear depth wheels
- JCB 531-70 TELESCOPIC FORKLIFT c/w attachments
- NEW NRH TRAMLINER BUSTER 2 leg subsoiler, adjustable working width, c/w rubber wheels
- JCB 541-70 TELESCOPIC FORKLIFT c/w attachments
- NRH SUBSOILER 3 or 5 leg subsoiler c/w packer roll
- BLECAVATOR STONE & TRASH BURYING ROTARY CULTIVATOR 2.5m, Buries up to 8" deep
- STRUIK INTER ROW POTATO CULTIVATOR 36" ROWS c/w depth wheels, heavy duty hock tines, shaping hood, available with full width tines or for inter row work 2 x 36" rows
- STRUIK INTER ROW POTATO CULTIVATOR 34" c/w depth wheels, heavy duty hock tines, shaping hood for 2 x 34" rows
- KVERNLAND RIDGER PTO driven rotary potato ridger for 30" rows, c/w hook tines, depth wheels and shaping hood.
- HOEKSTRA RIDGER PTO driven potato ridger for 34" rows c/w hook tines, shaping hood and depth wheels
- HOEKSTRA RIDGER PTO driven potato ridger for 36" rows c/w hook tines, shaping hood and depth wheels.
- JOHN DEERE 6155R John Deere 6155R, c/w 50kph auto quad with creep, TLS, cab suspension, air brakes, 520/85R38, 480/70R28, autotrack ready
- BUNNINGS MUCK SPREADER 12T & 14T
- JOHN DEERE 6215R John Deere 6215R, c/w 50kph auto power, TLS, cab suspension, 4 electric spools, front linkage and PTO, power beyond, air brakes, 650/65R42, 540/65R30, autotrack ready
- SIMON CULTIGRILL STONE BURIER BEDFORMER 72" beds, cage rear roller
- JOHN DEERE 6210R c/w 50kph autoquad, TLS, cab suspension, air brakes, 650/65R42, 540/65R30, autotrack ready
- JOHN DEERE 6190R c/w 50kph autoquad, TLS, cab suspension, air brakes, 650/65R42, 540/65R30
- JOHN DEERE 6150R c/w 50kph autoquad, TLS, cab suspension, air brakes, 520/85R38, 420/70R28, autotrack ready if required

- JOHN DEERE 6145R c/w 50kph auto quad with creep, TLS, cab suspension, 3 electric spools, air brakes, 520/85R38, 420/5R28, autotrack ready
- JOHN DEERE 6140R c/w 50kph autoquad, TLS, cab suspension, air brakes, 520/85R38, 480/70R28, autotrack ready if required
- BIG CUTTER FRONT & REAR FLAIL MOWER from 1.8m to 3m
- JOHN DEERE GREEN STAR UNIVERSAL AUTOTRAC JD auto steer to fit any John Deere tractor on hire fleet or customer's own, rowcrop work, drilling, cultivations etc.
- KUBOTA RTV-900 MR c/w tipping chassis, camp roof, glass windshield, front & rear lights, tow hitch, beacon
- SMI 220 BIG CUTTER OFF SET PROFESSIONAL PLUS double skinned, automatic belt tightener, hammer blades, centralised grease point, hydraulic side shift, 90 degrees upright cut, 60 degrees bank cut, wide angle PTO shaft at both ends, shear bolt protection, skids, Rugby ball roller if required.
- KUBOTA L3200 COMPACT TRACTOR c/w double acting hydraulics, weight frame, 212/80 x 15 front wheels, 335/80 x 20 rear wheels, driver, flail & rotary mower, rotavator, plough, power harrow, post-hole borer.
- SPEARHEAD 4.6 M MULCHER Multi cut, folding rotary cutter
- KUBOTA B1700 COMPACT TRACTOR c/w driver, flail & rotary mower, rotavator, plough, power harrow, post hole borer
- BAILEY 18 TONNE BEETEAPER c/w sprung drawbar, hydraulic door, air & oil braking full front window, rollover easy sheet, mudguards, grain chute, rear beacon, Nokian flotation tyres available 560-45 x 22.5 & 560-60 x 22.5
- BAILEY 14, 15, 16 TONNE MONO TRAILERS c/w arched full front window, hydraulic door, sprung drawbar, grain chute, rollover sheet, commercial axles, air braking available, flotation tyres available 560-45 x 22.5 & 560-60 x 22.5
- BAILEY 14 & 15 T ROOT TRAILERS c/w arched full front window, hyd door, sprung drawbar, rollover sheet, grain chute, commercial axles c/w air braking & flotation tyres available 560-45 x 22.5 & 560-60 x 22.5
- BAILEY 14T CONTRACT TIPPING TRAILER c/w sprung drawbar, hyd door, 10stud commercial axles, 385/65R22.5 wheels, LED lights, air & oil brakes, 9.87 cubic metres carrying capacity
- BAILEY FLAT 10, 14, 16, 18 TONNE TRAILER 25' to 36' Long c/w flotation tyres available 560-45 x 22.5 & 560-60 x 22.5
- EX DEMO BAILEY CURTAIN SIDED VEG PALLET TRAILER 29' LONG High speed axles, 72" Track on heavy duty tandem units for high clear, chequer plate floor, mesh walk ways, rear beacon, internal lights, steel back, full canopy, air brackets to take air kit.
- CTS STUBBLE FINISHER c/w 4.5 Kverneland CTS Stubble Finisher, hydraulic fold, drawbar mount, front stabilising wheels, 11 auto reset legs, levelling discs, 550/60R 22.5 transport wheels, hydraulic auto reset subsoiler legs, cracker packer, road lights, wearing metal 75% good, Vaderstad Biodrill with hopper cover.
- LAWN SCARIFIER 50CM WIDE FOR HIRE - LAWN SCARIFIER 50CM WIDE.
- TWOSE ROLL FOR HIRE

We are a BAGMA approved Thorough Examination Centre

Stay safe, stay legal.



By law, all lifting equipment, which includes forklifts, telehandlers and excavators, needs a regular Thorough Examination certificate.

Ensure that your materials handling equipment is safe and legal with Thorough Examination inspections.

When your inspection is finished, you will receive an official Report of Thorough Examination.

Please call: 01205 480460

“WHATEVER THE SEASON
THERE’S A BAILEY TRAILER TO MEET YOUR NEEDS..”



www.irelandsfarmmachinery.co.uk Tel: 01205 480460

Mobile Rolling Road Brake Tester.



With brake testing deemed vital at every safety inspection it should be planned as a key part of the maintenance regime for your trailer.

Our machine comes equipped with extra wide rollers to accommodate all makes and models of Trailers and our extended workshop availability means your trailer will have minimum down time and be back on the road before you know it.

Please contact your local service manager & book a test now to stay safe and compliant.

ON FARM SERVICE AVAILABLE

Safety is paramount and prevention is better than the cure!

AGRICULTURAL MACHINERY HIRE



TRACTORS

TRAILERS

TELEHANDLERS

FOR LONG OR SHORT TERM HIRE

For Hire enquiries please contact Stuart:
Office: **01205 480460** Mobile: **07824 317357**
Email: stuart@ifmgroup.co.uk

www.irelandsfarmmachinery.co.uk

John Deere & Kubota Tractors 120hp to 285hp • Bailey Trailers 14-20 Tonne Grain, Root & Silage
• Bailey Flat Trailers • JCB Telescopic Loaders • Grass Machinery • Mulchers & Flails • Ploughs,
Power Harrows • Subsoilers • Potato Cultivation • Onion Equipment • Weed surfer & many other
implements • Compact Tractors & Equipment.



SALES
BEN FORD GROUP SALES MANAGER SUTTERTON 07469 853763
DARYL DUNN CARRINGTON 07881 106298
GARY HALLIDAY SUTTERTON 07502 336581
PAUL CLAYTON SUTTERTON 07387 023444
JOSH PENNELL MARKET RASEN 07469 850502

HEAD OFFICE:
Main Road, Carrington
Boston, Lincs, PE22 7HX
Tel: 01205 480460

SOUTHERN LINCS DEPOT:
Wigtoft Road, Sutterton, Boston,
Lincs, PE20 2EL
Tel: 01205 460600

NORTH LINCS DEPOT:
Gallamore Lane, Market Rasen,
Lincs, LN8 3HA
Tel: 01673 842222

PARTS DEPARTMENT

STEVE BAXTER
GROUP PARTS MANAGER
SUTTERTON
Office: 01205 460600
Mobile: 07733 242529

COLIN CLARKE
PARTS MANAGER
CARRINGTON
Office: 01205 480460
Mobile: 07387 022792

LAURA MALES
BRANCH MANAGER
MARKET RASEN
Office: 01673 842222
Mobile: 07464 548834

SERVICE DEPARTMENT

PAUL LAWSON
GROUP SERVICE MANAGER
SUTTERTON
Office: 01205 460600
Mobile: 07900 788580

JUSTYN MCALLISTER
WORKSHOP SUPERVISOR
CARRINGTON
Office: 01205 480460
Mobile: 07799 901292

BILL JACKSON
SERVICE MANAGER
MARKET RASEN
Office: 01673 842222
Mobile: 07469 852630

HIRE MANAGER

STUART GOSLING
Office: 01205 480460
Mobile: 07824 317357

GROUND CARE

HUW PRICE
GROUND CARE MANAGER
Office: 01205 480460
Mobile: 07917 496849

PAUL BELL
GROUND CARE SALES - CARRINGTON
Office: 01205 480460
Mobile: 07384 257960

BOB TINDALL
GROUND CARE SALES- MARKET RASEN
Office: 01673 842222
Mobile: 07384 258479