

# Cheetah Chatter

Published by Meridian Park School & Meridian Park PTSA

## STATE TESTING SCHEDULE

Smarter Balanced Assessments (SBAC) are the next generation of student assessment and will replace the MSP in Washington State. All students in grades 3 – 6 will take the test in both mathematics and English language arts/literacy. In addition, 5th grade will take the Science MSP this year.

Our school will administer the tests on April 7th- May 29th. Please limit out of school times, specifically on the dates your child is testing. The testing schedule and makeup dates are provided. It is complicated and difficult to make up these tests. All of the assessments will begin at 9:15 a.m. and students will be provided the entire day if necessary. On-time attendance is very important! Please review this information carefully. It's very helpful for students to attend on the dates listed--please limit appointments & early dismissals.

- ◆ Grade 3: April 9, 13, 14, 15; May 14 and 19
- ◆ Grade 4: April 30; May 5, 6, 7, 12, and 13
- ◆ Grade 5: April 14 & 16; May 4, 6, 7, 8, and 13
- ◆ Grade 6: April 28 & 30; May 5, 6, 7, and 12

If you have any questions regarding the upcoming SBA, please don't hesitate to contact your child's teacher, Mr.Tadlock, or the school assessment coordinators, Pamela Uran or Julie Harris.

Thank you for your support and understanding.  
- Meridian Park Staff

Monday	Tuesday	Wednesday	Thursday	Friday
4/6	4/7	4/8	4/9 3 <sup>rd</sup> - ELA CAT	4/10
4/13 3 <sup>rd</sup> - ELA CA	4/14 3 <sup>rd</sup> - ELA PT 1 5 <sup>th</sup> - Math CAT	4/15 3 <sup>rd</sup> - ELA PT 2	4/16 5 <sup>th</sup> - Math CA & PT	4/17
Spring Break: April 20 <sup>th</sup> -24 <sup>th</sup>				
4/27	4/28 6 <sup>th</sup> - Math CAT	4/29	4/30 4 <sup>th</sup> - ELA CAT 6 <sup>th</sup> - ELA CAT	5/1
5/4 5 <sup>th</sup> - ELA CAT	5/5 4 <sup>th</sup> - ELA CA 6 <sup>th</sup> - ELA CA	5/6 4 <sup>th</sup> - ELA PT 1 5 <sup>th</sup> - ELA CA 6 <sup>th</sup> - ELA PT 1	5/7 4 <sup>th</sup> - ELA PT 2 5 <sup>th</sup> - ELA PT 1 6 <sup>th</sup> - ELA PT 2	5/8 5 <sup>th</sup> - ELA PT 2
5/11	5/12 4 <sup>th</sup> - Math CAT 6 <sup>th</sup> - Math CA & PT	5/13 4 <sup>th</sup> - Math CA & PT 5 <sup>th</sup> - Science MSP	5/14 3 <sup>rd</sup> - Math CAT	5/15
5/18	5/19 3 <sup>rd</sup> - Math CA & PT	5/20	5/21	5/22

### INSIDE THIS ISSUE

Announcements .....1  
Principal's Letter .....2  
Meridian Park News .....3  
Cheetah Notes .....9  
PTSA President's Letter .....12  
PTSA News.....13  
Resources for Families .....15

### UPCOMING EVENTS

- April 1 - 15**  
MP Lobby "The Works" donation Box  
**Boxers and Bloomers Drive**
- April 2**  
6:00 - 8:00pm  
Lynnwood Bowl & Skate  
**MP Skating Party**
- April 6**  
Non-Student Workday  
**No School**
- April 7**  
6:00 - 7:00 pm  
Meridian Park Library  
**PTSA Board of Directors Meeting**
- April 7**  
7:00 - 8:30 pm  
Meridian Park Library  
**PTSA General Membership Meeting**
- April 13-17**  
8:40am - 4:00pm daily, except Friday until 1:00pm  
Meridian Park Library  
**Scholastic Book Fair**
- April 13**  
7:00pm  
Meridian Park Library  
**Car Show Planning Meeting**
- April 16**  
5:30 - 8:00pm  
Meridian Park Campus  
**MP Family Fun Night**
- April 16**  
3:40 - 4:00pm  
Meridian Park Campus  
**Student Store Open**
- April 20 - 24**  
Spring Break  
**No School**
- May 8**  
7:10pm  
Safeco Field  
**MP Mariners Game Night**

## Principal's Letter

Dear Families —

It's the time of the year when we start to consider your child's classroom assignment for next year, so it's important to share how we create balanced classes. Student assignments are **not** random or arbitrary. We are intentional and thoughtful about how we determine class assignments, and our staff teams work together closely to consider many factors in creating balanced classes.

Each classroom is a small learning community, and we support the idea that classrooms need to be representative of the social, emotional, and academic needs and abilities of children. We consider the following criteria when we create balanced classrooms:

- ◆ Academic balance
- ◆ Social/emotional balance and the development of new social groups
- ◆ Balance of students who have a positive influence
- ◆ Special academic needs, social needs, and learning styles
- ◆ Balance of boys, girls, and grade levels (if possible)
- ◆ Benefits of having a male or female teacher if possible

We welcome input about your child's strengths, needs, circumstances, or other information that might be helpful. The Input Form is not a teacher request form, but an opportunity for families to provide information about their child's social, emotional, learning, or academic characteristics. Additionally, because we value the benefits of combination classes, we also invite families to indicate their preference for a split-grade class (combination classes are likely in both programs, and especially in the Highly Capable program).

In this process we also ask that you not make a private request of your current teacher or request a specific teacher for next year. Together, the teachers and I are careful about an appropriate placement for each student. While we will make our best plans this spring, we cannot anticipate teacher changes, enrollment changes, or other factors that may occur over the summer and during the first two weeks of school. Like the

other schools, it's a district standard to post classroom assignments on the day before school starts. We are careful to make the best placements possible and cannot accept requests for changes.

If you would like to offer information related to your child's classroom assignment for next year, please complete the Input Form included with this newsletter and return by April 15. Please also let us know if you are not returning. Program and staffing depend on enrollment, and every child makes a difference. Please call Jill in the office if you decide that you will not be returning to MP next year.



We appreciate our partnership and your support of our student assignment process as a key component to our educational program. Along with other Shoreline schools, we have utilized this process successfully for many years. We are confident that your student's class assignment will result in a positive experience next year. Thanks for your trust and confidence, and our best to your family this spring!

~David Tadlock, Principal

[david.tadlock@shorelineschools.org](mailto:david.tadlock@shorelineschools.org)

National SBA Testing for  
Grades 3-6 is  
**April 9 – May 21**  
Please limit out of school  
time during this period.

Shoreline School District #412 does not discriminate against any protected classes. For further information on notice of non-discrimination, including the address and phone number of the Title IX officer, visit: [www.shorelineschools.org/info/title\\_ix.php](http://www.shorelineschools.org/info/title_ix.php).

# Meridian Park News

## Parent Input Form (optional) Student Assignments for 2015 – 2016

**Dear Parents:** We are intentional in our efforts to create balanced classes. We have a strong teaching staff who care about student learning and social growth. We recognize that all students have different learning styles, needs, and respond in a variety of ways to changing environments. We know that your child’s classroom assignment is important to you. It’s important to have your input as we create balance classrooms for next year. In creating balanced classes, we carefully consider several factors:

- Staff & parent input
- Academic and social needs of students; learning styles, student academic performance
- Behavior patterns, social groups, & overall class balance (gender)

**Parents sometimes wonder if we can consider friendships. Friendships are not one of the factors because it’s difficult to assign all students with their friends. We do, however, consider this an opportunity to create new and better balanced social groups. We also invite families to indicate that they prefer combination classes.**

If you have information to consider as part of our assignment process, please complete this form and return it to your teacher by April 15. Here are a few reminders:

- Staff and grade level configurations may change at any time; combination classes are likely in both programs
- Information is **not** confidential and will be shared with the staff
- We **do not** accept specific teacher requests or guarantee placement in a specific classroom
- Completion of this form is optional and all students are given careful consideration even if no parent input

Child’s Name \_\_\_\_\_ Current Teacher & Grade \_\_\_\_\_

**How do you view your child in the following areas?                      Strong Area, Average Area, Area of Growth**

Reading \_\_\_\_\_ Math \_\_\_\_\_

Work/Study \_\_\_\_\_ Social \_\_\_\_\_

WORKS WELL: Individually \_\_\_\_ With Partners \_\_\_\_                      In Groups \_\_\_\_                      In Split Grade Class \_\_\_\_

Describe unique or specific learning needs

---

---

Describe special strengths

---

---

Describe the best type of learning environment

---

---

Other relevant information you would like to share?

---

---

**Deadline April 15, 2015**

Parent Signature \_\_\_\_\_ Thank You! PLEASE RETURN TO YOUR CHILD’S TEACHER                      Updated March 2015

---

# Meridian Park News

---

## QUESTIONS AND ANSWERS ABOUT TESTING IN WASHINGTON STATE

*(Includes some material prepared by ReadyWA.org)*



### **How will Washington's state tests change with the new Common Core learning standards?**

In Washington, we will replace some of our state tests with new exams aligned to the Common Core in math and English language arts. The new exams are a part of a comprehensive system called "Smarter Balanced." This system is made up of four components:

- ◆ a summative test given during the last 12 weeks of school;
- ◆ optional interim tests available throughout the year to see if students are on track to achieve their end-of-year goals;
- ◆ a research-based digital library of professional development materials and instructional tools for teachers; and
- ◆ a secure online reporting system that will show student achievement and progress toward understanding the standards.

### **What tests will students take in the 2014-15 school year?**

- ◆ In spring 2015, students in grades 3-8 will take the new Smarter Balanced tests in math and English language arts. Those two exams replace the math, reading and writing MSP. The science MSP (taken in grades 5 and 8) will remain the same.
- ◆ Students in algebra, geometry, and biology courses will continue to take end-of-course exams. Students are required to pass one state math exam and the biology exam to be eligible to graduate.
- ◆ 11th graders will take the new Smarter Balanced tests that will measure college- and career-readiness in math and English language arts. Students will not have to pass those tests for high school graduation until the class of 2019.

### **Why do we need state tests such as the Smarter Balanced Assessment?**

The Smarter Balanced Assessments are aligned to what students are learning in their classes. These tests serve as independent, objective measures of how students are doing. Clear, understandable test scores help teachers and parents work together to adjust their approach and better meet students' needs. Statewide tests also provide data that we use to determine, for example, what's working in special education, or whether race- or income-based achievement gaps continue to persist.

### **What makes the new Smarter Balanced tests better than our current state exams?**

First, the Smarter Balanced tests assess the state's new Common Core learning standards. Both the standards and new tests require students to apply their knowledge to real-world problems and write persuasively. The new tests will be administered online, giving students a better testing experience and returning results faster so teachers and parents can use the results to help students. The knowledge and skills the tests measure are those our students need to succeed in college and careers, including problem-solving, writing, and critical thinking.

---

# Meridian Park News

---

## QUESTIONS AND ANSWERS ABOUT TESTING IN WASHINGTON STATE

*(Includes some material prepared by ReadyWA.org)*

### **The new Smarter Balanced tests are:**

- ◆ Designed to measure skills like research, listening, and communicating reasoning.
- ◆ “Computer-adaptive,” so the computer automatically adjusts the difficulty of the questions as the student is taking the test.
- ◆ Being used by more than 20 states. That means student results will truly be comparable across states in all grades.
- ◆ Innovative, with accommodations for English Language Learners and students with disabilities that make the tests more accessible without compromising what they are designed to measure.
- ◆ Developed by states, for states. Washington state teachers are involved in every step of the design process. Smarter Balanced has also made a library of resources available to teachers, all aligned with best practices and the Common Core.

Take a practice test and see for yourself. Here’s the link:

<http://www.smarterbalanced.org/pilot-test>

### **Will the new Smarter Balanced tests be harder than our current exams?**

Yes, but that’s because they are aligned to the Common Core State Standards, which are more challenging than our state’s former learning standards in math, reading and writing. Our previous state exams measured basic skills. Smarter Balanced, reflecting the Common Core standards, tests students at a college-and-career readiness level.

### **Will test scores be lower on the new Smarter Balanced tests compared to our current state exams?**

It’s not an apples-to-apples comparison. These are a new set of learning standards and tests with a new way of scoring, so it’s not possible to compare new scores with the old ones. Because Common Core State Standards are more challenging than our former state learning standards, student test scores may initially be lower than what students, parents, and teachers have seen in the past. Smarter Balanced tests set a new baseline for student test scores. After we get the scores from the spring 2015 tests, we will be able to set improvement goals for future years.

### **More information can be found at these sites.**

- ◆ Common Core: <http://www.corestandards.org>
- ◆ Smarter Balanced Assessment: [www.smarterbalanced.org](http://www.smarterbalanced.org)
- ◆ Washington Office of the Superintendent of Public Instruction: [www.k12.wa.us/assessment/StateTesting](http://www.k12.wa.us/assessment/StateTesting)



---

# Meridian Park News

---

## PREGUNTAS Y RESPUESTAS ACERCA DE EVALUACIONES ESTATALES EN WASHINGTON

*(incluye información preparada por ReadyWA.org)*

### **¿Cómo van las pruebas del estado de Washington a cambiar con los nuevos Estándares de Núcleo Común?**

En Washington, vamos a sustituir algunos de nuestros exámenes estatales con nuevos exámenes alineados con el Núcleo Común en matemáticas y lenguaje Inglés. Los nuevos exámenes son parte de un sistema llamado "Smarter Balanced." Este sistema está compuesto de cuatro componentes:

- ◆ Una prueba acumulativa dada durante las últimas 12 semanas de la escuela;
- ◆ Pruebas provisionales opcionales disponibles durante todo el año para ver si los estudiantes están en camino de lograr las metas de fin de año;
- ◆ Una biblioteca digital basada en la investigación de materiales de desarrollo profesional y herramientas de instrucción para profesores; y
- ◆ Un sistema de información en línea seguro que mostrará el rendimiento estudiantil y el progreso hacia la comprensión de los estándares.

### **¿Qué pruebas tomarán los estudiantes en el año escolar 2014-15?**

- ◆ En la primavera de 2015, los estudiantes en los grados 3-8 tomarán las nuevas pruebas Smarter Balanced en matemáticas y artes del lenguaje inglés. Esos exámenes reemplazan los exámenes MSP en matemáticas, lectura y escritura. El examen MSP en ciencia (tomada en los grados 5 y 8) seguirá siendo el mismo.
- ◆ Los estudiantes de álgebra, geometría, y los cursos de biología continuarán tomando exámenes de fin de curso. Los estudiantes deben aprobar un examen estatal de matemáticas y el examen de biología para poder graduarse.
- ◆ Los estudiantes del grado 11 tomarán las nuevas pruebas Smarter Balanced que medirán la preparación universitaria y profesional en matemáticas y artes de lengua inglés. Los estudiantes no tendrán que aprobar esas pruebas para poder graduarse hasta la clase del 2019. Los estudiantes del grado 10 tomarán las pruebas Smarter Balanced solamente en artes de lengua inglés.

### **¿Por qué necesitamos pruebas estatales como la Evaluación de Smarter Balanced?**

Las evaluaciones Smarter Balanced están alineadas con lo que los estudiantes están aprendiendo en sus clases. Estas pruebas sirven como medidas independientes y objetivas de cómo los estudiantes están progresando. Puntajes claros y comprensibles ayudan a los maestros y padres a trabajar juntos para ajustar su enfoque y satisfacer mejor las necesidades de los estudiantes. Las evaluaciones estatales también proporcionan datos que utilizamos para determinar, por ejemplo, lo que está funcionando en la educación especial, o si aun persisten brechas de logros basados en raza o bajos recursos.

### **¿Qué hacen que las nuevas pruebas Smarter Balanced sean mejores que nuestros exámenes estatales actuales?**

En primer lugar, las pruebas Smarter Balanced evalúan los nuevos estándares de aprendizaje de núcleo común. Tanto los estándares como las nuevas pruebas requieren que los estudiantes apliquen sus conocimientos a problemas del mundo real y usen escritura persuasiva. Los nuevos exámenes serán administrados en línea, dando a los estudiantes una mejor experiencia y la habilidad de recibir sus puntajes de una manera más rápida para que los maestros y los padres pueden utilizar los resultados para ayudar a los estudiantes. El conocimiento y las habilidades que miden estas pruebas son aquellas que nuestros estudiantes necesitan para tener éxito en la universidad y la carrera profesional, incluyendo resolución de problemas, escritura y pensamiento crítico.

---

# Meridian Park News

---

## PREGUNTAS Y RESPUESTAS ACERCA DE EVALUACIONES ESTATALES EN WASHINGTON

*(incluye información preparada por ReadyWA.org)*

### **Las nuevas pruebas Smarter Balanced son:**

- ◆ Diseñado para medir las habilidades como: la investigación, la audición activa y el comunicación de razonamiento.
- ◆ "adaptados por computadora", por lo que el equipo ajusta automáticamente la dificultad de las preguntas mientras el estudiante está tomando la prueba.
- ◆ Son utilizado por más de 20 estados. Eso significa que los resultados estudiantiles será verdaderamente comparables entre los estados en todos los grados.
- ◆ Innovador, con modificaciones para estudiantes del idioma inglés y estudiantes con discapacidades que hacen que las pruebas sean más accesibles, sin comprometer los resultados.
- ◆ Desarrollado por estados, para estados. Los maestros del estado de Washington están involucrados en cada paso del proceso de diseño. El Smarter Balanced también ha creado una biblioteca de recursos alineada con las mejores prácticas y el Núcleo Común, disponibles a todos los profesores.

Tome un examen de práctica y vea por si mismo. Aquí está el enlace:

<http://www.smarterbalanced.org/pilot-test>.

### **¿Las nuevas pruebas Smarter Balanced serán más difíciles que nuestros exámenes actuales?**

Sí, pero eso es porque están alineados con los Estándares de Núcleo Común, que son más altos que los antiguos estándares de aprendizaje de nuestro estado en matemáticas, lectura y escritura. Los exámenes anteriores medían habilidades básicas. El Smarter Balanced, alineado con los Estándares de Núcleo Común, prueba a los estudiantes a un nivel de preparación para universidad y carrera.

### **¿Serán los puntajes más bajos con las nuevas pruebas Smarter Balanced en comparación con nuestros exámenes estatales actuales?**

No es una comparación de manzanas con manzanas. Estos son un nuevo conjunto de normas y pruebas de aprendizaje con un nuevo sistema de puntajes, así que no es posible comparar las nuevas pruebas con las viejas. Debido a que los Estándares Estatales de Núcleo Común serán más desafiantes que los antiguos, los puntajes estudiantiles podrán ser inicialmente más bajos que los números que los estudiantes, padres y profesores han visto anteriormente. Las pruebas Smarter Balanced establecen una nueva base para calificaciones de los estudiantes. Después de obtener los resultados de las pruebas de primavera 2015, seremos capaces de establecer objetivos de mejora para los próximos años.

### **Más información se puede encontrar en estos sitios.**

- ◆ Núcleo Común: <http://www.corestandards.org>
- ◆ Evaluación Smarter Balanced: [www.smarterbalanced.org](http://www.smarterbalanced.org)
- ◆ Washington Oficina del Superintendente de Instrucción Pública: [www.k12.wa.us/assessment/StateTesting](http://www.k12.wa.us/assessment/StateTesting)

# Meridian Park News

## INITIAL 2015-2016 SCHOOL CALENDAR

Shoreline Public Schools Initial 2015-2016 SCHOOL CALENDAR as of 11/4/2014										
2015					2016					NOTE: This calendar is subject to state approval of a 175-day school year. The final calendar is also subject to bargaining and final board approval.
MON	TUE	WED	THUR	FRI	MON	TUE	WED	THUR	FRI	
<b>JULY</b>					<b>JANUARY</b>					18
		1	2	3					1	Jul 2 Independence Day Add'l Holiday (Certain Shoreline CBAs)
6	7	8	9	10	4	5	6	7	8	Jul 3 Independence Day Holiday (federal)
13	14	15	16	17	11	12	13	14	15	Sep 7 Labor Day
20	21	22	23	24	18	19	20	21	22	Sep 9 <b>First Day of School</b>
27	28	29	30	31	25	26	27	28	29	
<b>AUGUST</b>					<b>FEBRUARY</b>					16
3	4	5	6	7	1	2	3	4	5	Nov 11 Veterans Day
10	11	12	13	14	8	9	10	11	12	Nov 26 - 27 Thanksgiving Break
17	18	19	20	21	15	16	17	18	19	Dec 21 - Jan 1 Winter Break
24	25	26	27	28	22	23	24	25	26	Jan 18 Martin Luther King Jr. Day
31					29					
<b>SEPTEMBER</b>					<b>MARCH</b>					22
	1	2	3	4	1	2	3	4		Feb 15 President's Day
7	8	9*	10	11	7	8	9	10	11	Feb 16 - 19 Mid-Winter Break
14	15	16	17	18	14	15	16	17	18	Apr 18 - 22 Spring Break
21	22	23	24	25	21	22	23	24	25	
28	29	30			28	29	30	31		May 30 Memorial Day
<b>OCTOBER</b>					<b>APRIL</b>					15
			1	2					1	Jun 24 <b>Likely last day of school</b>
5	6	7	8	9	4	5	6	7	8	
12	13	14	15	16	11	12	13	14	15	
19	20	21	22	23	18	19	20	21	22	
26	27	28	29	30	25	26	27	28	29	
<b>NOVEMBER</b>					<b>MAY</b>					20
2	3	4	5	6	2	3	4	5	6	
9	10	11	12	13	9	10	11	12	13	
16	17	18	19	20	16	17	18	19	20	
23	24	25	26	27	23	24	25	26	27	
30					30	31				
<b>DECEMBER</b>					<b>JUNE</b>					17
	1	2	3	4			1	2	3	
7	8	9	10	11	6	7	8	9	10	
14	15	16	17	18	13	14	15	16	17	
21	22	23	24	25	20	21	22	23	24*	
28	29	30	31		27	28	29	30		

\* see note on right ■ schools closed ■ non-student workday

## YOUNG SCIENTISTS AND ARTISTS

You won't want to miss the expanded Shoreline STEM Festival on May 9, 2015 at Shoreline Community College, with a student science fair, hands-on STEM fun, robotics demonstrations, and STEM Career expo. You can design and present a project in the science fair, or just come to experience the exhibits and demonstrations. This year will be bigger than ever, with the UW Mobile planetarium, Reptile Man, Boeing engineers, Fred Hutchinson Cancer Research Center, Army Corps of Engineers and more - all on site and ready to share their passion for knowledge and inquiry! The festival is brought to our community with the support of Shoreline Community College, Shoreline Public Schools Foundation, and Shoreline School District.

Artists! We are accepting design submissions for festival t-shirts - deadline is March 15, 2015.

Details for all can be found at: [www.shorelinesciencefair.org](http://www.shorelinesciencefair.org). Registration deadline for the science fair is April 3, 2015. Registration and entrance to the festival are all completely FREE!



---

# Cheetah Notes

---

## A NOTE FROM THE LIBRARY

Dear Meridian Park Families,

☞ **Scholastic's "Book Fair Under the Sea"** will run Monday through Friday, April 13 - 17, from 8:40 until 4:00, except the 12<sup>th</sup> when it will close at 1:00 p.m.

☞ **The Book Fair will be open** during Family Fun Night on Thursday, April 16, from 5:30 until 8:00.

☞ **There will be a drawing** for free books beginning at 6:15 for Kindergarten ~ 4th Grade, and at 7:45 for Fifth and Sixth Grades. (All students entered in the drawing must be present to win.)

☞ **Look at the Teacher/Classroom Wish Lists** to find ways in which to support your children's classrooms.

☞ **"Books for All" Program** This program helps us get books into students' hands and supports non-profit child-advocacy organizations. For every dollar donated by a parent, child, community member, or staff member, Scholastic Book Fairs matches it and donates to a non-profit agency such as Toys for Tots and National Center for Family Literacy. To participate, send in \$1.00, or place it in the jar at the cashier's station at the Book Fair, located in the library, or contribute your spare change.

☞ **Book Fairy Program** This program uses Book Fair profits and donations (see above) to provide gift certificates to students from the Meridian Park Book Fair-y, so that they may purchase books at the Book Fair.

Meridian Park's book fair profits benefit Meridian Park students with literacy programs and the purchase of new library books. We hope to see everyone at the Book Fair.

Sincerely,

~Jenny Hillger, Library Media Specialist

## NOTES FROM THE HEALTH OFFICE

Thank you to all of the families who have washed and returned clothing borrowed from the health office. We are running low on the disposable plastic grocery bags we use to send soiled clothing home. If you have extra bags to donate to the health office we would very much appreciate it.

Thank you also for the snack donations!

Reminder: Please have an authorized adult bring medications into the health office. Students are not to transport medications. For student safety all medications are to be kept and administered at the health office with the appropriate paperwork on file. If you have any questions about medications-- both prescription and over the counter that need to be taken at school--please contact the nurses.

Thank you!  
Nurse Susan and Nurse Tama  
206-498-9360

[susan.goldman@shorelineschools.org](mailto:susan.goldman@shorelineschools.org)  
[tama.leahy@shorelineschools.org](mailto:tama.leahy@shorelineschools.org)

# Cheetah Notes

## A NOTE FROM OUR FAMILY ADVOCATE

### BIRTHDAY PARTY ETIQUETTE

This is a friendly reminder! If your child is having a birthday party and you plan to distribute invitations at school, please ONLY do so if:

- The whole class will be invited, or
- All the students of one gender will be invited

When some children get invitations and others don't, the news usually gets around.

The result is hurt feelings, and is contrary to Meridian Park's rule against exclusion.



Better yet, use email to send invitations, or the good old fashioned United States Postal Service!

### A LITTLE ELEMENTARY BRAIN SCIENCE

Students in many classes learn skills of Emotion Management as part of the Second Step Curriculum. They learn that our brains can be thought of as being like a closed fist in which the fingers go over the thumb.

The fingers= the thinking part of the brain.

The thumb= the feeling part of the brain.

When we experience big, strong emotions, the thinking part of our brain "flips out" and our feelings take over. That's when all of us, children and adults alike, are most likely to do things we might later regret.

Students learn that before that happens, they can:

- NOTICE the physical cues, such as sweaty palms, tight stomach, pounding heart, of strong emotions
- STOP- with a "stop signal" such as "calm down" or "take it easy," or simply, "stop"
- NAME THEIR FEELING- "I feel mad"
- CALM DOWN- using skills such as belly breathing, self-talk, and counting

If you have a student in first, second or third grade, it's likely they are familiar with these terms.

Ask them what they remember and to demonstrate for you!

~Annie Gage, MSW

206-393-1768

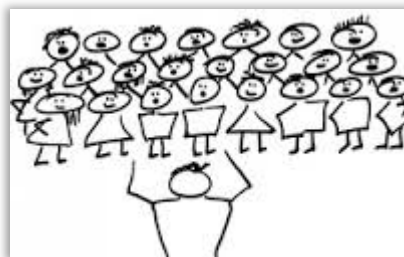
[annie.gage@shorlineschools.org](mailto:annie.gage@shorlineschools.org)

# Cheetah Notes

## NOTES FROM THE MUSIC ROOM

On March 5, these amazing Meridian Park 6<sup>th</sup> graders represented our school by participating in the beautiful Westside Choral Music Festival Concert at Shorewood High School. Approximately 200 high school, middle school, and 6<sup>th</sup> grade students sang in this fabulous concert. Thank you!

Luna Abraham, Leah Acevedo, Ariella Acevedo, Marcus Becker, Bridget Byington, Albert Chang, Colin Cook, Dylan DeAngelo, Cole Duthweiler, Vincent Fabian, Teah Gomez, Lucy Heagler, Chloe Hlaudy-Gilje, Amya Lipsky, Nikko Macklin, Zoe Mosher, Hannah Nickel, Matthew Pacunski, Annie Qiu, Anjali Schatzer, Michelle Schmidt, Lillian Steinmetz, Carmen Tran, Marcus Turner, Aaliyah Vilorio, Lillian Williamson, Zachary Wulff, and Franklin Zheng.



### IMPORTANT MUSIC EVENTS FOR MERIDIAN PARK:

#### **Meridian Park Arts Festival May 28, 2015**

Looking ahead: as spring calendars fill up fast, please enter this on your family calendar today. You won't want to miss it!

2<sup>nd</sup>, 3<sup>rd</sup>, 4<sup>th</sup>, 5<sup>th</sup> grade concert, 6:45 p.m.

All 2<sup>nd</sup>, 3<sup>rd</sup>, 4<sup>th</sup>, and 5<sup>th</sup> grade students will perform at this concert.

Please put this on your family calendar today!

#### **5<sup>th</sup> Grade Field trip to The Seattle Symphony, Tuesday, May 12 (includes Ms. Parks' 4<sup>th</sup> grade)**

Permission slips for the symphony field trip will be coming home soon.

#### **Peter and the Wolf Assembly Wednesday May 20, 2015**

~Mrs. Anderson and the Meridian Park Singing Cheetahs

---

## PTSA President's Letter

---

Hello from the Meridian Park PTSA!

We hope to see everyone at the Family Fun Night coming up on Thursday, April 16<sup>th</sup>. There are many events planned from the Book Fair to Circus Arts demonstrations. We will also be announcing the winners of the Golden Acorn and Outstanding Educator awards. Look for more information elsewhere in this issue and online at [www.mpptsa.org](http://www.mpptsa.org).

Have you ever heard of the Shoreline PTA Council? This group acts as a liaison for all of the local PTAs throughout Shoreline and manages several uniquely Shoreline events and projects, such as The Works, the Back to School Consortium and the Holiday Baskets. Co-President Kim Ostitis was recently elected for her second year as Vice-President of the Council. Check out [www.shorelineptacouncil.org](http://www.shorelineptacouncil.org) to learn more!

Many thanks to our hardworking Nominating Committee who recruited several excellent candidates for office in 2015-2016. We still have several key positions open including Co-President, Co-Treasurer and Vice President of Events. If you are interested in joining the leadership team or have questions, please contact Nominating Committee Chair Dana Doerksen at [gasbarri@comcast.net](mailto:gasbarri@comcast.net).

Be sure that you have the 6<sup>th</sup> Annual Shoreline Classic Car Show marked on your calendar for Sunday, July 19<sup>th</sup>! The next planning meeting will be Monday, April 13<sup>th</sup> at 7:00 pm in the Library. Your help is needed to continue this wonderful tradition.

The next PTSA Board of Directors meeting will be Tuesday, May 5<sup>th</sup> from 7:00-8:30 pm in the Library. The regular monthly Board of Directors meetings are held on the first Tuesday of the month. YMCA provides free childcare and all of our meetings are open to the public.



~Kim Ostitis  
~ Jill Steinberg  
Co-Presidents, 2014-2015  
[mpptsapresident@gmail.com](mailto:mpptsapresident@gmail.com)  
206-229-7948

### PTSA GENERAL MEMBERSHIP MEETING - APRIL 7 AT 7:00 PM

Please join us on Tuesday, April 7<sup>th</sup> for the Meridian Park PTSA General Membership meeting at 7:00 pm in the Library. There will be a short business agenda, including election of 2015-2016 officers. Our educational speaker for the evening will be Chuck Goodwin, the Safety & Emergency Preparedness Coordinator for the Shoreline School District.

Mr. Goodwin will be providing an update on how the school district has been moving forward with emergency preparedness since the January 7<sup>th</sup> security incident that happened on the Meridian Park campus. He will also be presenting a program called "Crisis Intervention for Shoreline Schools: What to do and say in the first 3 minutes to 3 hours." Snacks and free childcare provided by the Dale Turner YMCA. All MP PTSA meetings are open to the public.

---

## PTSA News

---

### FAMILY FUN NIGHT, THURSDAY, APRIL 16 5:30 -8:00 PM

The Meridian Park PTSA invites you to participate in an evening filled with fun! Stop by and join us for this free event.

#### Schedule of Events

- ◇ **5:30 - 8:00 pm** Come by the Art Docent Program table in the Front Foyer and choose to "buy" your student's art to finance art supplies for the 2015-2016 school year.
- ◇ **5:30 - 8:00 pm** Visit the BOOK FAIR in the Library.
- ◇ **5:30 - 7:00 pm** Pizza will be sold in the Cafeteria to raise money for next year's 6th grade camp.  
*Please bring cupcakes for the cupcake potluck!*
- ◇ **6:15 - 6:45 pm** Book Fair drawing for K-4 students in the Library (Students must be present to win).
- ◇ **6:50 - 7:10 pm** PTSA presents the Golden Acorn and Outstanding Educator Award in the Gym. Come support the recipients of these awards.
- ◇ **7:15 - 7:45 pm** Matt Alford presents the Circus Arts Club performance in the Gym.
- ◇ **7:45 - 8:00 pm** Book Fair drawing in the Library for 5-6th grade students (Students must be present to win).
- ◇ **7:45 - 8:00 pm** Attendees can try out Circus Arts equipment in the Gym.

If you have any questions or need more information please contact Dana Doerksen at [mpptsavpevents@gmail.com](mailto:mpptsavpevents@gmail.com).

### STUDENT ART SALE AT OPEN HOUSE, APRIL 16, 2015

It's time for the annual Meridian Park PTSA Art Docent Program fundraiser. We are asking each family to consider making a suggested donation of \$5 per student or more. Each student has created an original art piece that will be available at Open House on April 16th. An envelope will be coming home to send back with a donation enclosed or bring it to Open House when you pick up your piece in the main lobby.

This year's special project was a James Rizzi style painting that depicted a scene in Shoreline. We will be making a photo book from some of the pieces to present to the City of Shoreline. The art docent program provides an art lesson and project to K-6<sup>th</sup> grades throughout the year led by parent volunteers. This year our students created pieces related to Chihuly glass art, James Rizzi paintings and Matisse style collage. Thank you for helping the PTSA continue this enrichment program.



# PTSA News

## SHORELINE PTA BOXERS AND BLOOMERS DRIVE

Each spring, Shoreline schools collect specific items to be distributed to Shoreline families in need at the Back to School Consortium event held in August. Most wanted items are: Tooth brushes, toothpaste, shampoo, conditioner, new girl's underwear, new boy's underwear, new socks (boys and girls), and soap. Meridian Park's goal is to win a Golden Hanger Award by donating **500** items. Please consider donating an item or two and dropping them off in the MP lobby in the box marked, "The Works" by the display case. The drive ends on April 15 so please bring in your items any time before then. Thanks for your support!

## SAVE THE DATE FOR THE MP MARINERS GAME NIGHT!

Come with Meridian Park Elementary School families, friends, and school staff on an exciting evening to the Seattle Mariners game on Friday, May 8th at 7:10 p.m. This is a Meridian Park PTSA fundraiser. Our ticket price is \$15 per person, of which \$3 will go to the MP PTSA.

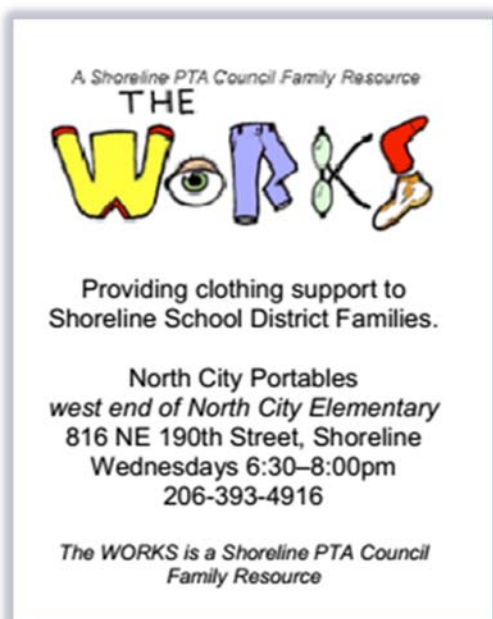
## SKATING PARTY - LAST PARTY OF THE YEAR!

Thursday, April 2nd from 6:00-8:00 pm

Join us for a MP skating party at Lynnwood Bowl & Skate, 6210 200th St. SW, Lynnwood. Admission is \$6.50 which includes quad skate rental. Pay an additional \$3.00 for in line skates. Parents are encouraged to participate. No drop-offs allowed. Feel free to bring your helmet! Hope to see you there!

## WRITER DOODLE CLUB

The Writer Doodle after-school enrichment club is accepting current and new students for the Spring Quarter. Come join us to polish your words for publication, add multimedia, experiment with author interviews and book trailers, and prepare for an author event. Classes are Wednesdays, 3:30 – 5 p.m. in the Library from April 8 to through June 17. Cost is \$100 for the ten-week session. Join us as we pursue brilliant writing! Contact Christine Pinto at [christinepinto@runbox.com](mailto:christinepinto@runbox.com) or **206-546-5150** to sign up or for more information.



## Resources for Families

*Information on these resources is offered as a service to families—these are not always MP or MP PTSA events or workshops.*

*FACES North  
And Getting School Ready  
Invite you to attend a workshop on*

### **Bilingualism in the Early Learning Classroom**

**Thursday, April 9<sup>th</sup>**

**6:30 to 8:30 p.m.**

**Meridian Park Elementary Library**

**17077 Meridian Ave. N**

**Shoreline, WA 98133**



**Presenters:**

**Jennifer Larson, Ph.D. Outreach  
Specialist for Learning and Brain  
Sciences from U of W**

**Sulai Cheung, "Preschool Lead**

**Teacher of CISC Step Ahead Bilingual Preschool"**

**Paula Mejia, Seattle Amistad School,**

**Bilingual, Bicultural Education**

**Grace Waylen from Shoreline School District ELL Program**

Come hear about the latest research conducted by the University of Washington, Institute on Learning and Brain Sciences (I-LABS) on bilingualism and early brain development. Learn about hands-on experience working with bilingual children in an early learning classroom. Find out about resources and programing in Shoreline School District.

**2 STARS Credit (No Charge)**

**Sponsored by a grant through SOAR and the King County  
Getting School Ready Project and FACES North**

**Questions: Marilyn Enloe at 206-393-1823 or email:**

**[marilyn.enloe@shorelineschools.org](mailto:marilyn.enloe@shorelineschools.org)**

## Resources for Families

Information on these resources is offered as a service to families—these are not always MP or MP PTSA events or workshops.

### MERIDIAN PARK ELEMENTARY

[schools.shorelineschools.org/  
meridianpark/](http://schools.shorelineschools.org/meridianpark/)

**David Tadlock** *Principal*

[David.Tadlock@shorelineschools.org](mailto:David.Tadlock@shorelineschools.org)

**Hillery Clark**

*Early Childhood Program Manager*

**Diane Randall** *Office Manager*

**Jill Gwazdauskas** *Registrar*

**Susan Goldman** *School Nurse*

**Annie Gage** *Family Advocate*

### 2014–15 MP PTSA EXECUTIVE COMMITTEE

[www.mpptsa.org](http://www.mpptsa.org)

**Kim Ostitis & Jill Steinberg**

*Co-Presidents*

[mpptsapresident@gmail.com](mailto:mpptsapresident@gmail.com)

**Open** *VP Clubs & Program*

[mpptsavpprograms@gmail.com](mailto:mpptsavpprograms@gmail.com)

**Dana Doerksen** *VP Events*

[mpptsavpevents@gmail.com](mailto:mpptsavpevents@gmail.com)

**Jennifer Kleyn** *Secretary*

[mpptsasecretary@gmail.com](mailto:mpptsasecretary@gmail.com)

**Adrienne Thompson & Matt Clark**

*Co-Treasurers*

[mpptsatreasurer@gmail.com](mailto:mpptsatreasurer@gmail.com)

### STANDING COMMITTEES

**Lee Lambert** *Grants*

**Adrienne Thompson** *Legislative Chair*

[mpptsalegislativechair@gmail.com](mailto:mpptsalegislativechair@gmail.com)

**Susan Duthweiler** *Membership*

[mpptsamemberships@gmail.com](mailto:mpptsamemberships@gmail.com)

**Mel Williamson & Denise Dana**

*Cheetah Chatter Editors*

[cheetahchatter@icloud.com](mailto:cheetahchatter@icloud.com)

**Frank Kleyn** *Webmaster*

[mpptsawebsite@gmail.com](mailto:mpptsawebsite@gmail.com)

Follow the MP PTSA on Facebook



### SHORECREST ASTRONOMY NIGHT

The Shorecrest Astronomy class of 2015 will be hosting the 12th annual Astronomy Night on Tues., April 14th in the Shorecrest High School Commons. The event will take place rain or shine and is free of charge. Enjoy food, a working planetarium from the University of Washington and guest speakers from Seattle Astronomical Society. The theme is Star Wars. Bring your family and friends!

### ARSENIC AND OLD LACE

**Shorewood High School** proudly presents Joseph Kesselring's hilarious and deadly classic, ***Arsenic and Old Lace***. Beware the Brewster household, where nothing is as it seems! Two seemingly sweet and gentle spinster aunts hide a *sickening* secret in their basement, while Teddy Roosevelt, Frankenstein, and Einstein haunt the old Brooklyn home. Can Mortimer Brewster deal with his nutty family and still go through with his promise to marry the woman he loves? Come see if any of the Brewster family is sane enough to survive!

Performed at the Shorewood High School Theater April 2, 3 and 4 at 7:30 pm and April 9, 10 and 11 at 7:30pm. Tickets are \$10 on [brownpapertickets.com](http://brownpapertickets.com), \$8 for students and seniors, and \$12 at the door.

### ADVANCED VOLLEYBALL CLUB FOR 6TH GRADERS

Advanced Volleyball Club is for 6<sup>th</sup>-grade students only in preparation for the Staff vs. Sixth Grade volleyball game in June. Volleyball club is on Thursday mornings from 8:00 -8:50 a.m. starting April 30th and ending June 4th. There are currently ten spots left open. Permission slips are available in the main office.

### ARCHITECTURE 101 SUMMER WORKSHOPS

As an architect I have provided enrichment classes at various schools throughout the Seattle school district and in my studio for many years. You can learn more about me at:

[archforkids.wordpress.com/about/](http://archforkids.wordpress.com/about/)

For a description of each workshop, see Workshop Descriptions, [archforkids.wordpress.com/classes-offered/](http://archforkids.wordpress.com/classes-offered/).

The fee for each workshop is \$135 per student. If you have any questions, please call Dora Taylor at **206-290-3400** or send an email to [dora.taylor@icloud.com](mailto:dora.taylor@icloud.com).

*The Cheetah Chatter is Published Monthly by*  
Meridian Park Elementary School and the Meridian Park PTSA