

Wifi Presentation



**High-Performance RADIUS Server and
Converged Prepaid & Postpaid Billing**



ISP, VOIP, Wimax, Mobile & Wifi Providers

About Aradial Technologies

- Designer and provider of Billing, AAA and Policy control servers for IP services.
- Targets multiple vertical markets, xDSL/FTTH, WiMAX, LTE, Wifi, VOIP, Cable/MSO and 3G mobile, Wifi offload.
- Experienced personnel from top networking and billing companies
- Private, self funded, profitable

Aradial Products

- **Aradial AAA/RADIUS**
- **Aradial Enforcer** – AAA with Prepaid Enforcement
 - Spotngo add-on for Payment and top-up vouchers
- **Aradial Converged Billing**
 - Billing and CRM
 - Prepaid and Postpaid billing
 - Voucher management
 - Self Care
 - PRM – Partner management
 - Wholesale Data and Voice
 - PCRF – Policy Control Engine - module
 - Diameter support for Gx/Gy and Ro/Rf - LTE
- **PCRF** – including AAA and optional billing
- **HSS** (including dual protocol Diameter and Radius)
- **Aradial SMART-HLR** - connector for 3G offload



Hotspot/Wifi And Case Studies

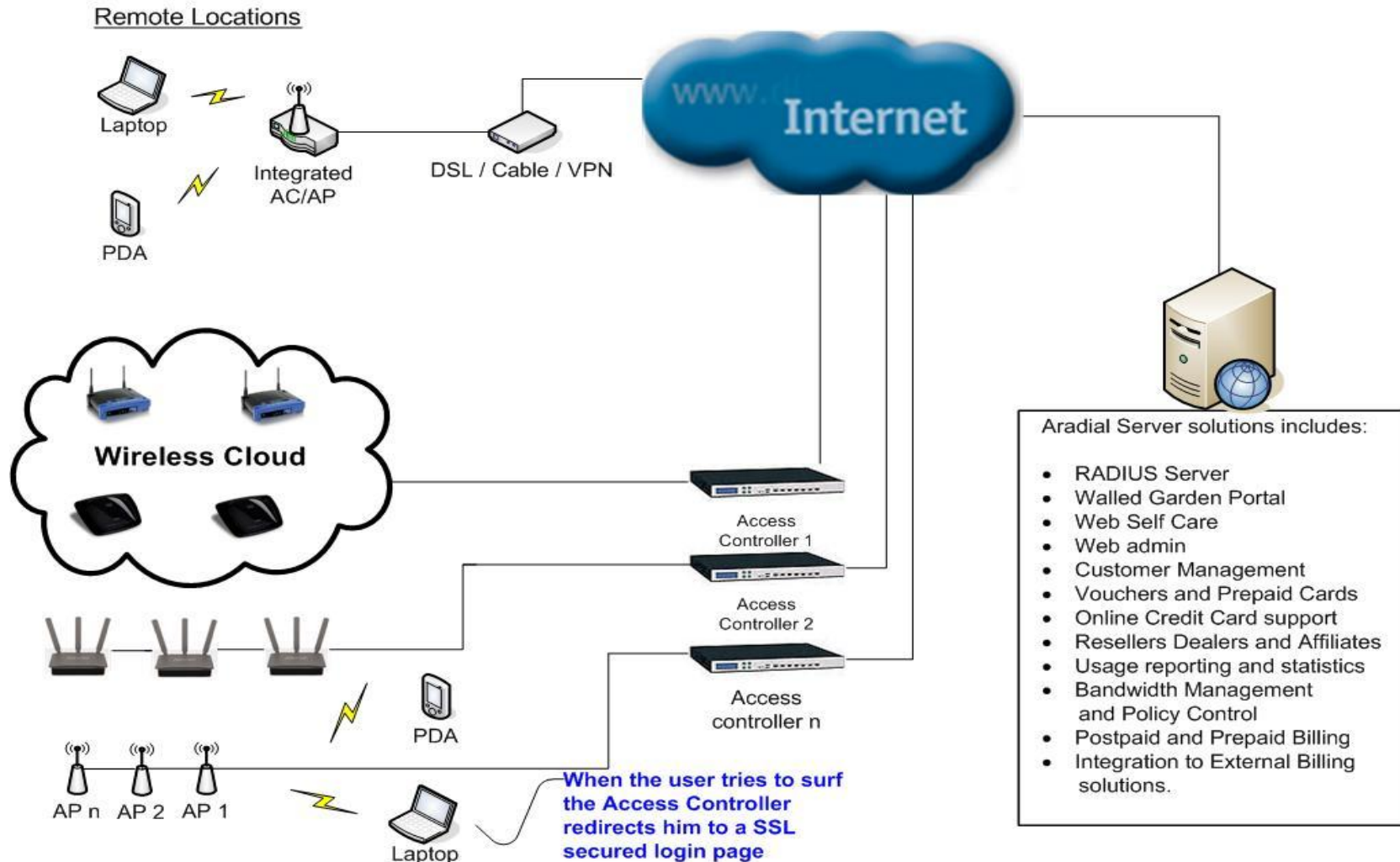
Hotspots/WiFi Installed Base

Over 500 hotspots network installed worldwide

- Interstate USA
- Bell Aliant Canada
- Kewiko Mongolia - Ruckus
- STAN Telecom - AF
- O'Fallon Wireless USA
- Telecell - Burkuno Passo
- Easy Kiosk - Australia
- PTK – Aruba networks
- Teledata – MZ
- MTN Rwanda - Balton/Alvarion
- MTN Uganda – Balton/Alvarion
- Dekal Telecom–Jamaica-Altai
- Noble Telecom - Jamaica
- Saudi Telecom - Altai
- Angola Telecom
- Namibia Telecom -Nomadix
- BSNL – India – Nomadix
- Paamul Mx– Motorola + MTK

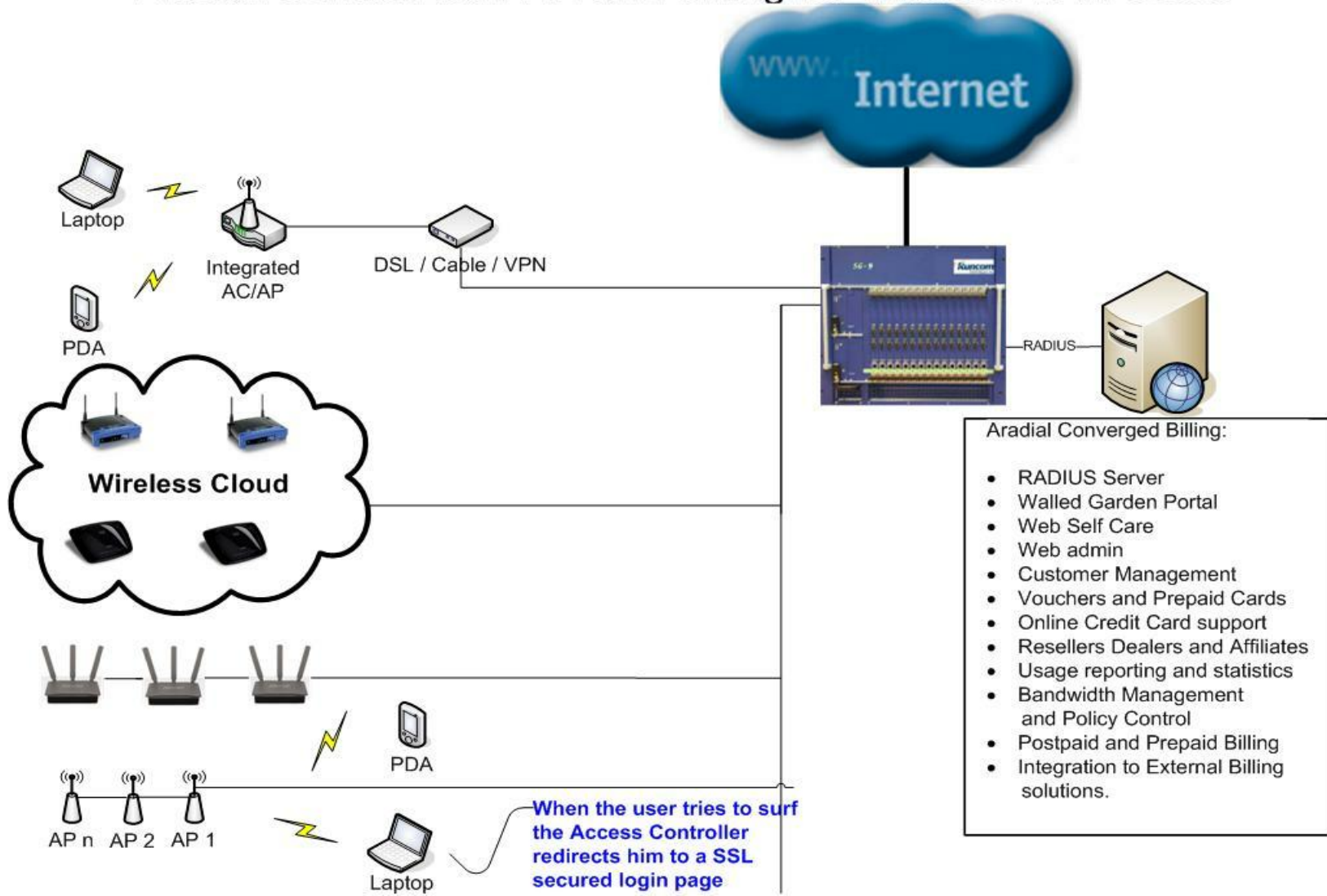
Typical Hotspot Deployment

Aradial Centralized AAA and Billing for Wireless LAN Users



Centralized deployment

Aradial Centralized AAA and Billing for Wireless LAN Users



Hotspots/WiFi Case Study

- MTN Uganda – Wifi 3G offload
 - Alvarion (WBS/Wavion) base stations
 - Mikrotik
 - ARCB with integration to Mobile Core
 - Hotel deployments and hospitality
- MTN Rwanda – Wifi 3G offload
 - Alvarion (WBS/Wavion) base stations
 - Mikrotik
 - Enforcer integration with Mobile IN

Hotspots/WiFi Case Study

- Interstate – Wifi
 - Mikrotik
 - Military bases and travel stops in USA
- Kewiko – Wifi in Mongolia
 - Ruckus (Zone Director)
 - Mikrotik
- Seychelles – Wifi all the Island
 - 300 Alvarion (WBS/Wavion) base stations
 - Mikrotik

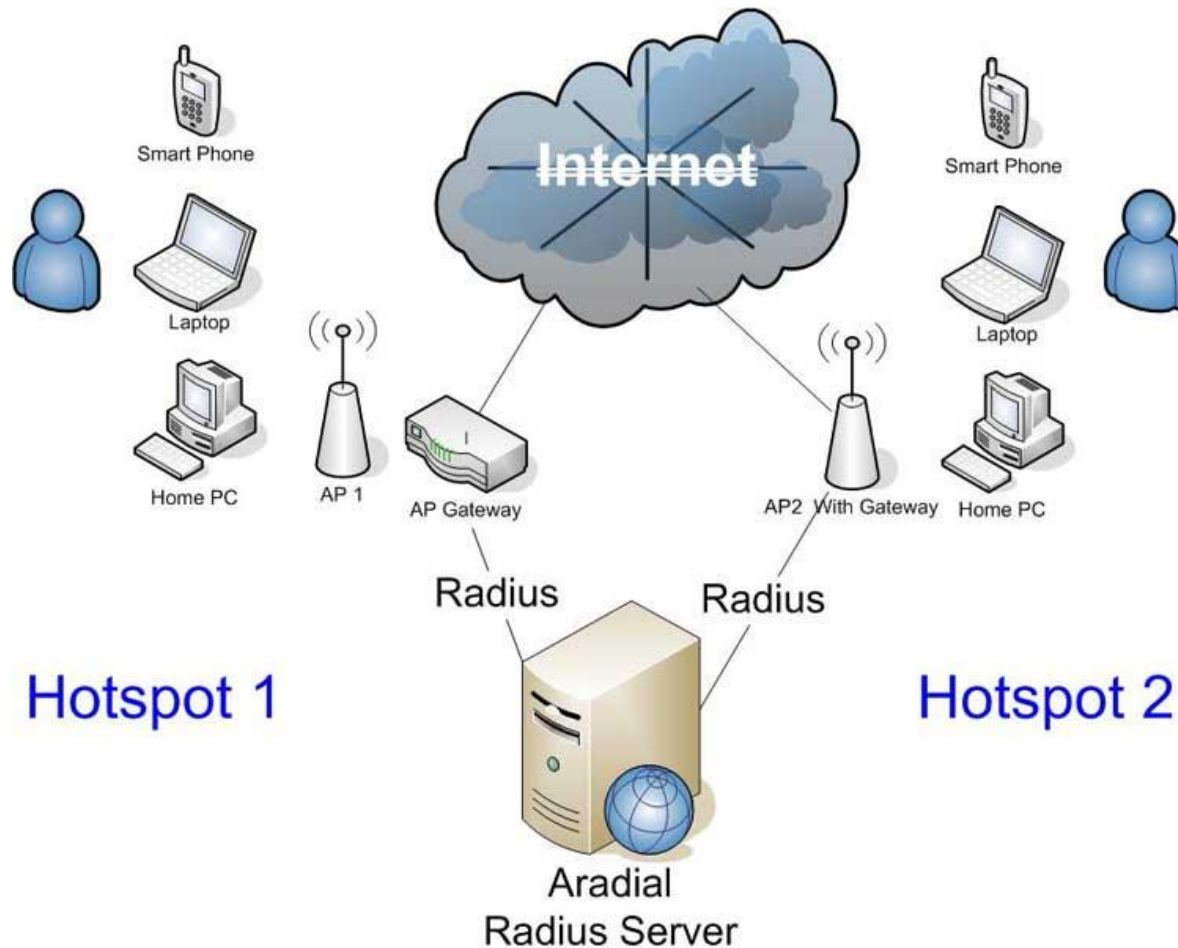
Hotspots/WiFi Case Study

- Altai – Jamaica Dekal
 - Altai base stations
 - Mikrotik controllers
 - 250,000 subscribers
 - Aradial Converged Billing - Prepaid
- Sea Link Denmark
 - Nomadix and Mikrotik
 - 250,000 subscribers
 - Prepaid cards
 - Spotngo Online Payments
 - Spotngo refill vouchers

Hotspots/WiFi Case Study

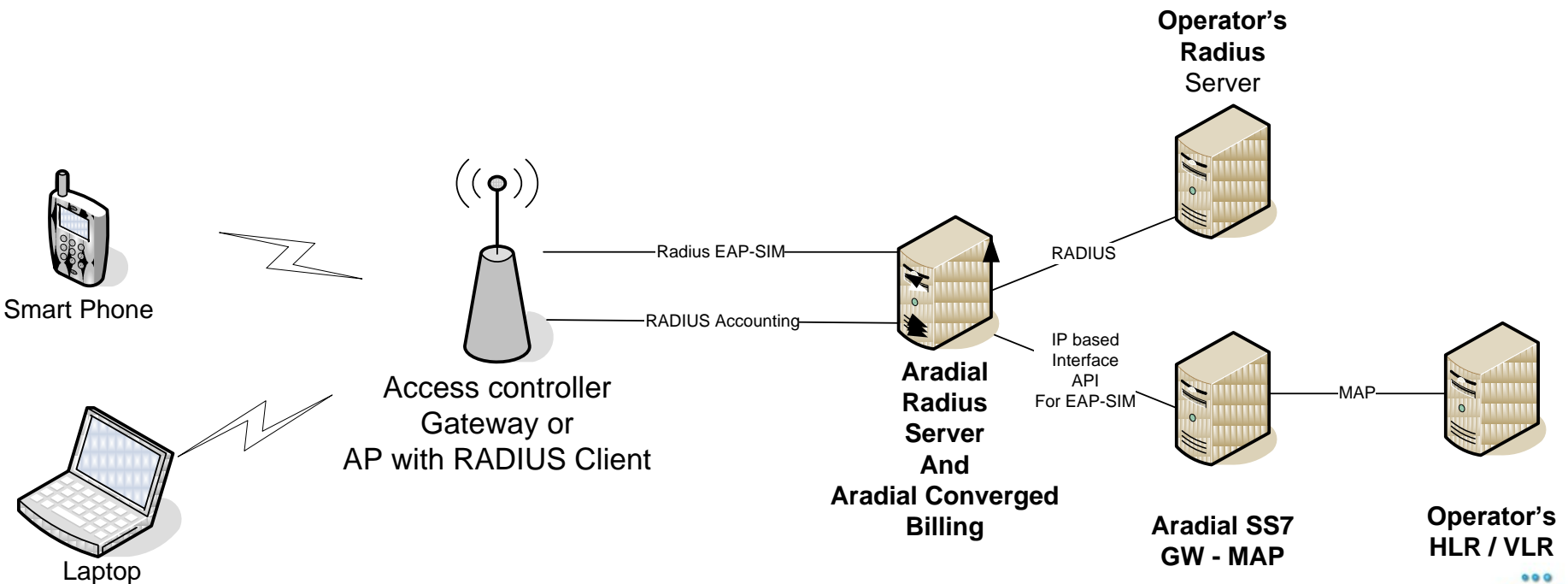
- Colima – Wifi Mexico
 - Alvarion (WBS/Wavion) – big coverage
 - Runcom controller for Wifi and Wimax
 - Wimax is for backhauling

Typical Hotspot Deployment



Integration using Aradial Smart-HLR Gateway

Aradial EAP-SIM Mobile Offloading using Aradial SS7 MAP - HLR Gateway



Aradial Supported Wide Area Base stations

- Ruckus
- Alvarion Networks (WBS/Wavion)
- GoNet
- Altai Technologies
- Motorola Solutions WING
- Cisco WLC
- Ubiquity
- Aruba
- Autelan
- Motorola Canopy - Cambium
- Xirrus

Aradial Supported WiFi Access Controllers

- Ruckus Zone Director
- Mikrotik OS
- Cisco WLC
- Runcom SG1
- Motorola WING
- Aruba Networks
- Nomadix
- HP Curve
- Zyxel, ValuePoint, Planet, Handlink
- 4IPNet
- Griffin, Dlink, NetGear,
- Chillispot based, Linksys - DD-WRT
- PfSense
- Ikarus OS



ISP/LTE/Wimax/VOIP/Mobile Customers

ISP / WISP

- Vodafone Ghana – GhanaTel
- Nepal Telecom – xDSL, Dialup and Wimax
- MTN Uganda – Wifi 3G offload
- MTN Rwanda – Wifi 3G offload
- NewRoz Telecom – IRAQ
- Kewiko - Mongolia
- Bezeq Israel PTT – ADSL, Wifi and Wimax
- Smile / Orange Israel
- PMI – Philippe Morris – Enterprise
- Cable & Wireless Atlantic – broadband ISPs
- Sure
- Sahara Net – Saudi Arabia

ISP / WISP

- Multivision - Djibouti
- BPK – Russia – multiple installations
- Rye Telecom – USA
- Jefferson Telecom – USA
- Bentley Walker – Canada
- Palau Telecom
- GTlink – Mexico
- DHI Telecom Group – USA, multiple locations
- Digicel group – Caribbean
- IOG – Norway
- STAN Telecom

Mobile GSM/CDMA (3G)

- **nPhase / Verizon Wireless**
 - 16M subscribers for supporting all the smartphones
- Maingate – M2M
 - 700,000 mobile subscribers in Sweden
- Orange Senegal
- STI – Mobile
 - mobile subscribers in Indonesia
 - Installation with FTS
- Telikom – PNG
 - With Telrad and Amdocs
- NSSL – UK
- Applied Satellite Technology– UK
- Globe Wireless – UK – DRP deployment

LTE

- Airspan - LTE and Wifi and Aricent EPC
 - Vanuatu
 - IPI9
 - RLTT
 - Others in the trails
- Telrad - LTE and HSS with Telrad EPC
- Cello Wireless

WiMAX

- Airspan – multiple installations including LTE
- Telrad – multiple installations including LTE
- Runcom – multiple installations
- Wichorus/Tellabs – multiple installations
 - Sprint USA
 - Augere Uganda
- Cisco ASN-GW and Starent
- Huawei and ALU - Telemax - Mongolia
- Motorola PMP / Canopy Wimax
 - Craig Wireless - USA – multiple projects
 - INEA – Poland

VoIP

- Net4India
 - VoIP provider with 2.5 M subscribers
- GCS - IDT
 - VoIP termination provider in USA
 - 100 million calls per month
- Globe Comm Systems
- Globe Wireless – USA/UK
- NetCiti / Datacom - Indonesia



Aradial RADIUS /AAA Server

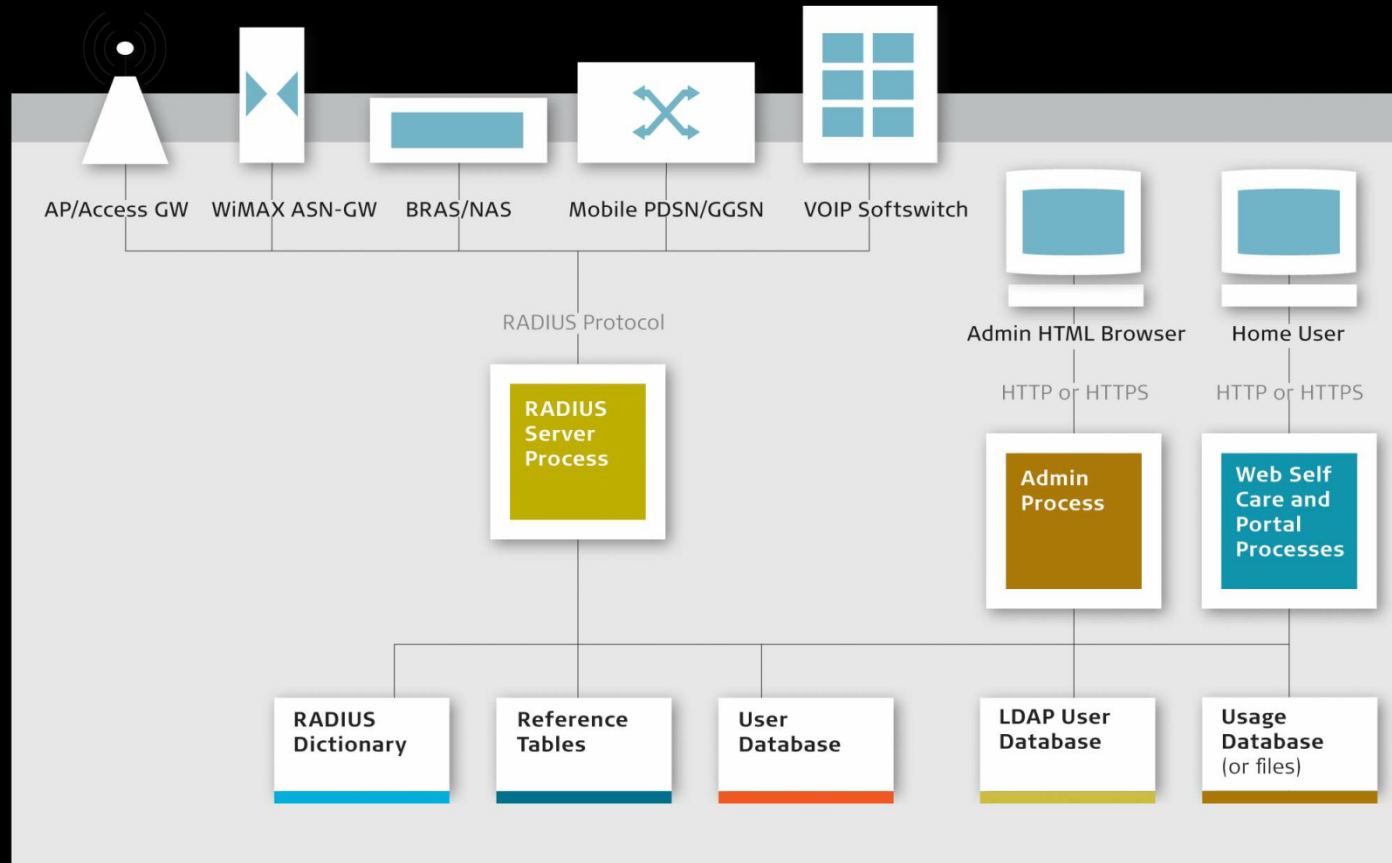
Aradial AAA Server/ Module

- High performance, fully-featured
- Compliant with RADIUS standards
- EAP support including EAP-SIM/AKA
- Wimax NWG support and LTE extension
- IPv4 and IPv6
- Scalable and High available (Multithreaded, Multi process)
- Geo redundancy
- Provisioning interface exposed to External system
- Diameter AAA and HSS - extra optional module
 - Diameter – Ro/Rf (DCCA), Gx/Gy (PCRF)

Aradial AAA Server (Cont.)

- 100% web-based interface
- SSL security support
- Scalable Dynamic IP Pools
- Database
 - MS SQL, Oracle, MySQL, LDAP, Active Directory
 - Flat files
- Statistics and reporting modules
- Enforcer add-on module:
 - Prepaid cards management,
 - Bandwidth management
 - Quotas and balance enforcement
 - Disconnect using POD on quota depletion or COA
 - MAC authentication and binding

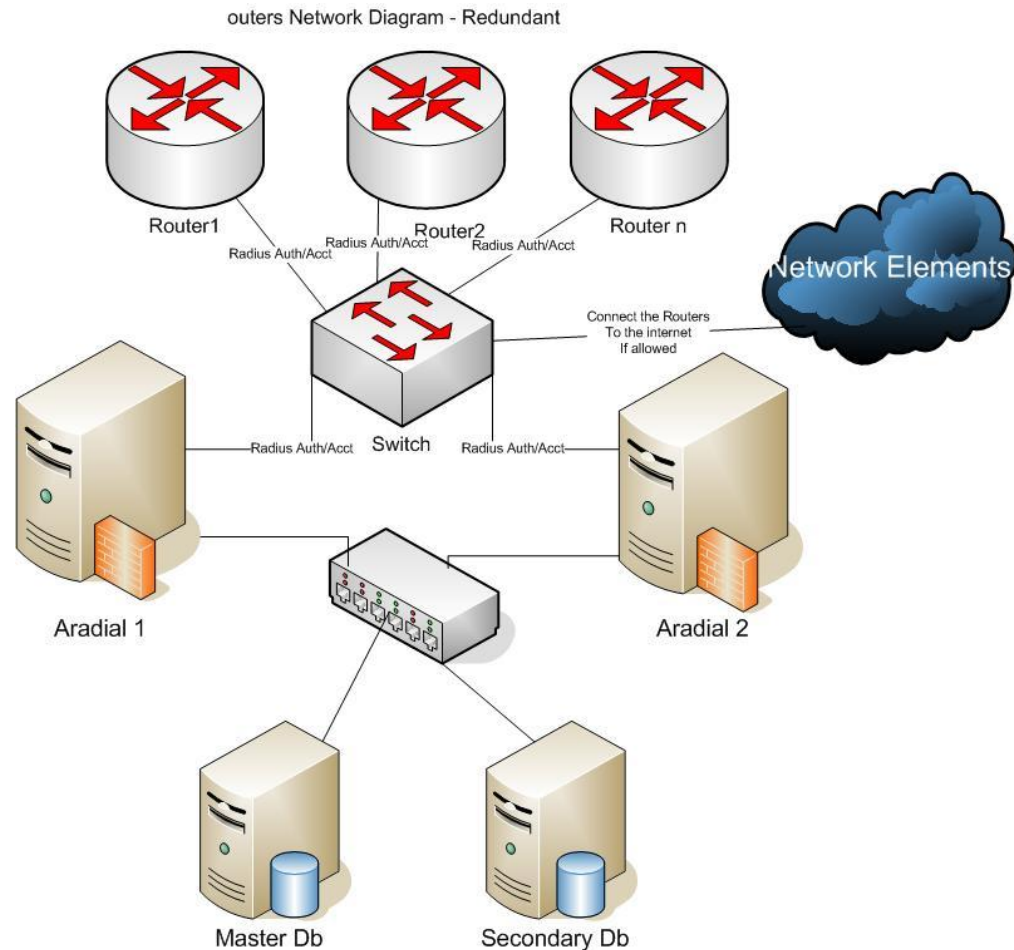
Architecture



Integration with External Billing Systems

- Enhanced provisioning APIs
 - Internal support for traffic, duration metering & QoS
- Export usage to billing systems
- Advanced API for external online charging/billing servers using CORBA
 - Session duration limitation
 - Data transfer limitations – directional limiting supported
 - Bandwidth limit using VSA RADIUS Attributes
 - Quota-based access
 - QoS and subscriber profile
- Integration using stored procedures calling external databases

Typical High-Availability Deployment





Spotngo Payment Module Add-on to AAA

Spotngo Enhanced Vouchers and Credit-Card Payment Module

- Plan/tariff management (time, traffic and expiration)
- PIN generation and management using plans
- User signup from the portal using a PIN
- Refilling users with a new PIN (PIN attached to a tariff plan with time, traffic or expiration)
- Refill by credit card
- Creating users with a credit card
- Configurable and customizable payment interface
- View/query payment history
- Secured portal (SSL)
- Secured PIN and plans management (SSL)
- Printing and exporting PINs to CSV files
- Customizable flows



AAA & Enforcer Advanced Features

Overview

- Policy algorithms
 - Handling RADIUS messages
- State server
 - What is happening in the network
- Prepaid user monitoring
- User management
- Process monitoring
 - Including SNMP MIBs and traps
- Load simulator to test the network
 - Test any scenario for any equipment

Policy Algorithm Mechanism

- Customizable handling flow for each RADIUS message type
- Flow made of a chain of RADIUS algorithms
- Core algorithms supplied with the product
 - Authentication and Authorization algorithm
 - Accounting algorithms
 - RADIUS proxy algorithm
- New algorithms can be developed using shared C++ and/or Lua & TCL scripting

Aradial AAA Features

- PAP and CHAP authentication
- EAP authentication
 - EAP-PEAP, MD5, LEAP
 - EAP-TTLS, TLS
 - EAP-SIM and AKA (need integration with SS7)
- Digest, MS-Chap and MS-ChapV2
- Proxying to other RADIUS servers
 - RFC-based RADIUS proxy
 - iPass & other specialized proxy support
- Tunneling
 - PPTP
 - L2TP
- Policy algorithms

Unique Functionality

- TCL & Lua scripting for policy algorithms
- Extended billing server provisioning API
- Grouping and subgrouping
- Persistent IP pools (support H/A)
- Bandwidth control per NAS model
- Metering (on external billing databases)
 - Time and data accumulator
 - Service suspension based on traffic per NAS model
- Blocking or changing QoS for groups in time-of-day periods (for example, peak, offpeak configurations)
- POD and COA support

Unique Functionality (Cont.)

- User management
- User self care
- Hotspots WiFi walled garden portal
 - Customization of the portal per location
- Prepaid cards management
- Bandwidth management
- Quotas and balance enforcement and expiration
- Disconnect using POD on quota depletion
- MAC authentication and binding
- Viewing sessions and summaries
- Exporting usage

Unique Functionality (Cont.)

- Spotngo payment system
 - Refillable vouchers
 - Credit-card processing
 - PayPal support
 - Customization of Spotngo per location
 - PMS system support – Fidelio/Micros

Integration with External Billing Systems

- Enhanced provisioning APIs
 - Internal support for traffic, duration metering & QOS
- Export usage to billing systems
- Advanced API for external online charging/billing servers using CORBA
 - Session duration limitation
 - Data transfer limitations – directional limiting supported
 - Bandwidth limit using VSA RADIUS Attributes
 - Quota-based access
 - QOS and subscriber profile
- Integration using stored procedures calling external databases



Aradial Converged Billing

ARCB

Aradial Converged Prepaid & Postpaid, Multi IP Services

- Prepaid and postpaid billing subscribers
- Advanced AAA & HSS– RADIUS and Diameter
- PCRF - Policy Control management
- Customer Management and basic CRM
- Voucher Management system
- Advanced Customizable Captive portal
- Multiple services on same platform:
 - Wifi / Hotspots and Wifi 3G/LTE Offloading
 - Wired Broadband – ADSL, FTTH– all ISP services
 - LTE & Wimax
 - Mobile 3G
 - VOIP, Traditional VOICE, SMS, MMS, VAS
 - VSAT, IPTV

Aradial Converged Prepaid & Postpaid, Multi IP Services

- Customer Management Hierarchy
 - Account – shared balance for users
 - Users under account
 - Resource/ANI/CPE defined per users
- Account and user operation – including Roles
 - View financial transactions, sessions and calls
 - Payment by credit card or PayPal
 - Adjustments to invoices
 - Manual payments – cash, checks, banks
 - Balance transfer between users and accounts

Aradial Converged Prepaid & Postpaid, Multi IP Services

- Business Partners and Reseller Management
 - Hierarchy
 - Revenue Sharing with Business partners
 - Registering subscribers / account
 - Selling vouchers and prepaid cards
 - Receiving commissions
 - Balance transfer (like Mobile Banking)
- Multiple VISP support as Business entity
 - Hierarchy
 - Special administration for VISP/BE
 - Manage users and vouchers under the VISP account
 - External HTTP interface for VISP billing integration
- Revenue Sharing with Business partners

Aradial Converged Prepaid & Postpaid, Multi IP Services

- Captive portal (customized per location)
 - Responsive design–support all OS including phones
 - Self registration
 - SMS registration (sending PIN via SMS)
 - Free registration (e.g. limit 30 min per day)
 - Buying online by PayPal / CC
 - Voucher registration and refill / top-up
- Web self care for users and accounts
 - Users and passwords management
 - Accounts - Payments and invoices
 - Purchase new offers and upgrades
 - View usage and sessions
- Trouble ticketing

Aradial Converged Prepaid & Postpaid, Multi IP Services

- Product catalog
 - Price plans
 - Offers using price plans
 - Price plan
 - Network profile provisioning
 - One-time offers
 - Add on offers

Aradial Converged Prepaid & Postpaid, Multi IP Services

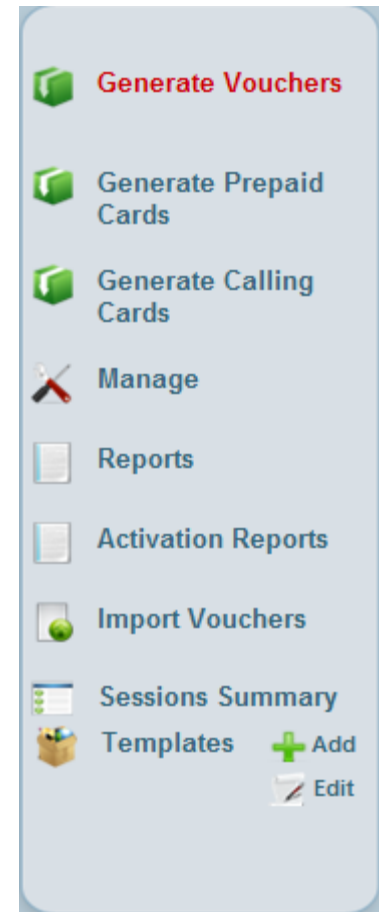
- Flexible charging & rating
 - Periodic Recurring Charges
 - Usage charges
 - Allowances – multiple balances and counters
 - Time of day and day of week and Calendar dates
 - Destination charging – e.g use for VOIP and VOICE Prefix table
 - One-time charges

Aradial Converged Voucher management

- Voucher management
 - Top-up vouchers
 - Prepaid Cards - Activated on first use
 - Calling Cards
- Creating in Batches
- Generating and managing by Resellers/Business entity (self care for BE)
- Voucher reports including Revenue reports
- Vouchers used in Captive Portal and Self Care
- Advanced Life Cycle including export to files
 - Created
 - Shipped
 - Ready for use
 - In use

Vouchers

- 3 kind of Vouchers:
 - Top-up Vouchers
 - Prepaid Cards (Anonymous user)
 - Calling Cards (VOIP)
- Reports
- Templates
- Manage vouchers



Aradial Converged Prepaid & Postpaid, Multi IP Services

- Invoicing
 - Periodic automatic invoicing
 - Invoicing sent by email
 - XSL layout – branding
 - Undo billing
 - Discounting
- Accounting reports
 - Invoicing
 - Payment
 - Operator statement, per-account statement
 - Aging payment

Aradial Converged Prepaid & Postpaid, Multi IP Services

- Automatic payment
 - Error management
- Account Receivables (A/R)
 - Manual, fast payment screen
 - Credit card
 - PayPal
 - Bank Transfer (*)
 - Mobile Payments (*)
- PMS – Micros (Fidelio/Opera support)

Aradial Converged Prepaid & Postpaid, Multi IP Services

- CDRs processing & error management or rating problems
- Inventory and Resource management
 - DID
 - ANI
 - MAC Address
 - IP Address

Aradial Policy Control

- PCRF - Policy Control quota management
- Fast definition of Policy rules, actions and step
- Handles various users events
- Advanced dynamic policies for active users
 - Change of QoS parameters in real-time
 - Disconnect
 - Redirect
 - Send balance notifications via email and SMS

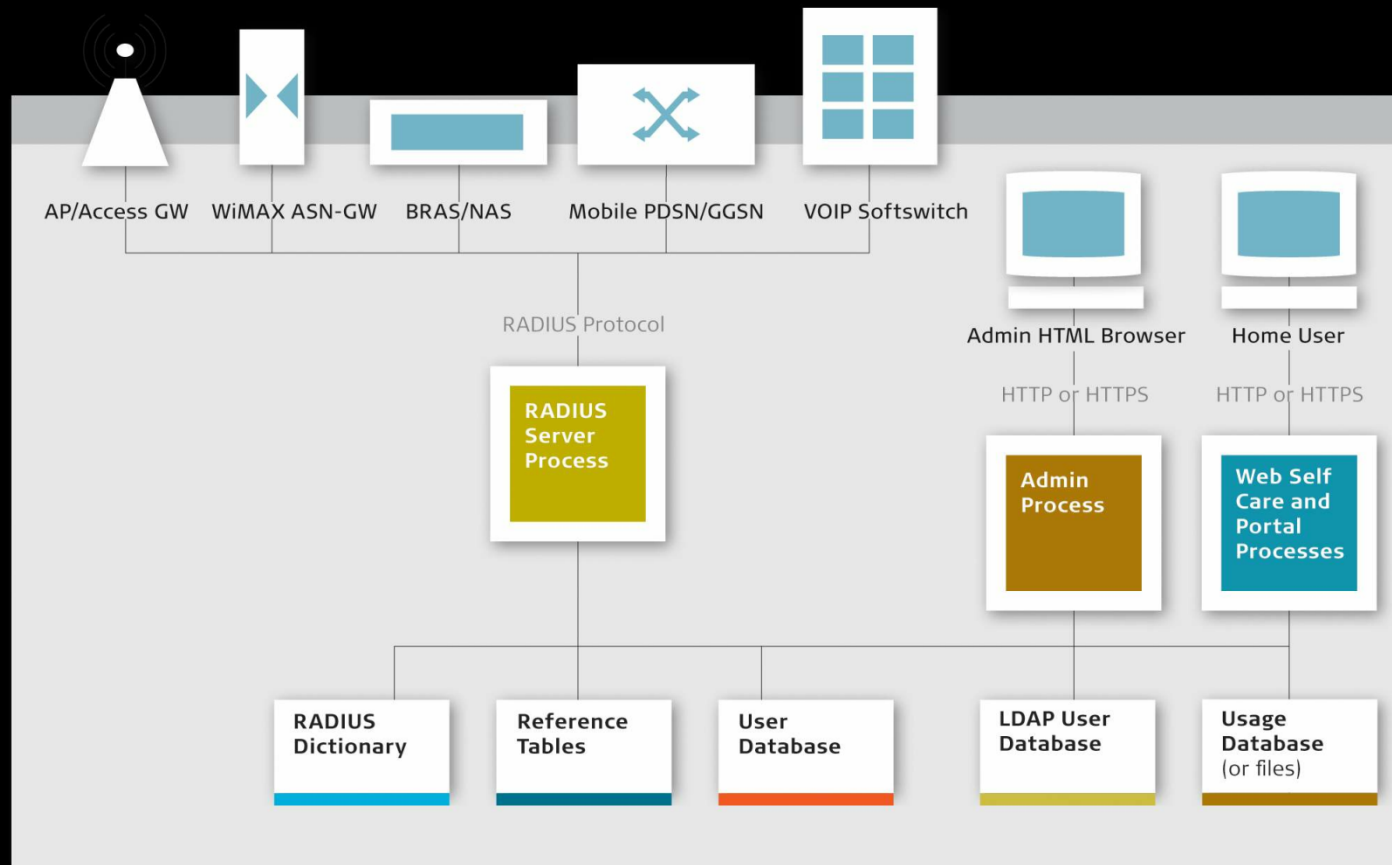
Wifi / Hotspots Advanced Features

- Bandwidth and QOS per unique NAS
- Volume quota limiting
 - Using RADIUS attributes sent to the NAS
 - Using Interim updates and COA / POD
 - Exact volume charging without Interim accounting, using redirection with Runcom.
- Time bank / allowance
- Expiration
- POD - Packet-of-disconnect for live sessions
 - From the Admin
 - Using API from external system
- COA – change of Authorization

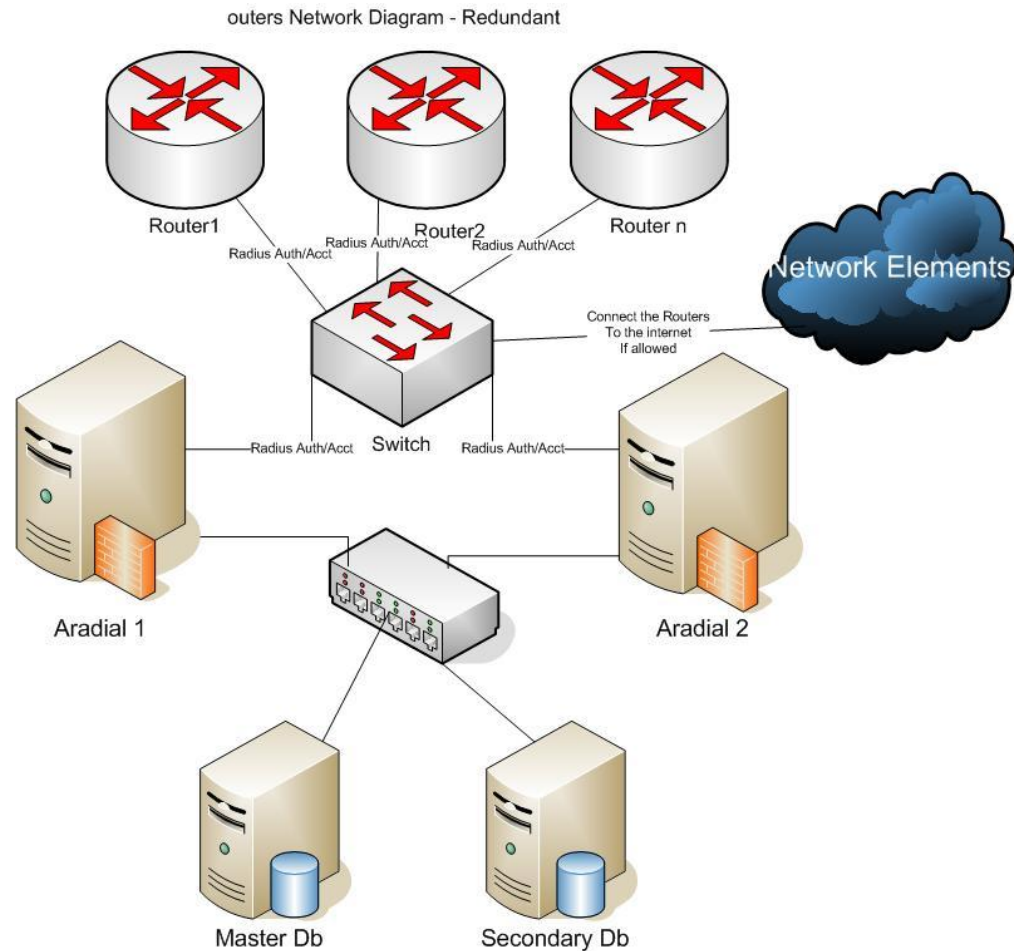
Wifi / Hotspots Advanced Features

- Different Portal per location or VLAN
- Different catalog/cart per location
- Doing MAC authentication prior to redirecting to web page.
- SMS and USSD registration flow
- Time Period charging
- Location based charging

Architecture



Typical High-Availability Deployment





Aradial LTE

LTE & AAA/Radius and Billing

- LTE Billing and policy control
- Prepaid and postpaid
- Diameter standard for Gx/Gy for PCRF
- Diameter Ro/Rf for charging
- HSS - Diameter
- HSS & AAA supports LTE extension for HSS
- Radius to Diameter converter



Aradial WiMAX

WiMAX AAA/Radius and Billing

- WiMAX Forum standard compliant
- AAA supports 16e NWG 1.4 Stage 3 including:
 - Authentication and authorization
 - EAP-TTLS/TLS for authentication adapted to the WiMAX standard
 - Integration with leading ASN gateway partners
 - IP-based and flow-based accounting
 - Hotlining with CoA
 - Wimax Prepaid application
 - 16d support with all known BRAS

WiMAX AAA/Radius and Billing (Cont.)

- Real-time active session management
- Scalability and real-time AAA functionalities
- Cost-effective solution and fast ROI
 - Billing and ordering:
 - All services, including broadband data, VoIP, voice, IPTV, VoD for WiMAX
 - Allows controlling users balance, time and traffic in real time and with zero leakage
- Advanced user management for subscribers
- Advance creation of prepaid cards
- Self ordering and provisioning redirection to activation portal at zero balance and plans purchase (add on module or ARCB billing)

WiMAX AAA/Radius and Billing (Cont.)

- Integration with external billing systems and future systems - advanced APIs for external billing integration, for both real-time events and provisioning
- Support of the following base station providers:
Airspan, Runcom, Telrad/Alvarion,
Cambium/Motorola PMP, Huawei, Alcatel Lucent,
Ipaxiom, Soma, Samsung, Redline, Aperto,
Expedience



Aradial VoIP Prepaid

Prepaid VoIP with Aradial

- Aradial VoIP supported services:
 - IVR calling
 - Direct calling using ANI/calling cards
 - Username
 - Peering
 - Termination and origination
- Two charging models:
 - Single session – entire balance is allocated for the user during the session
 - Multisession – the session is split into time quotas for all users that use a single balance

Prepaid VoIP with Aradial (Cont.)

- Centralized authentication and accounting for all routers or gateways
- High-performance and reliable server
- Scalable to handle millions of users and concurrent sessions on low-end hardware Converged IP services
- SSL secured HTML-based administration
- Dealer/business partner management – dealers can manage their own users
- Extended HTML UI for user database and user groups

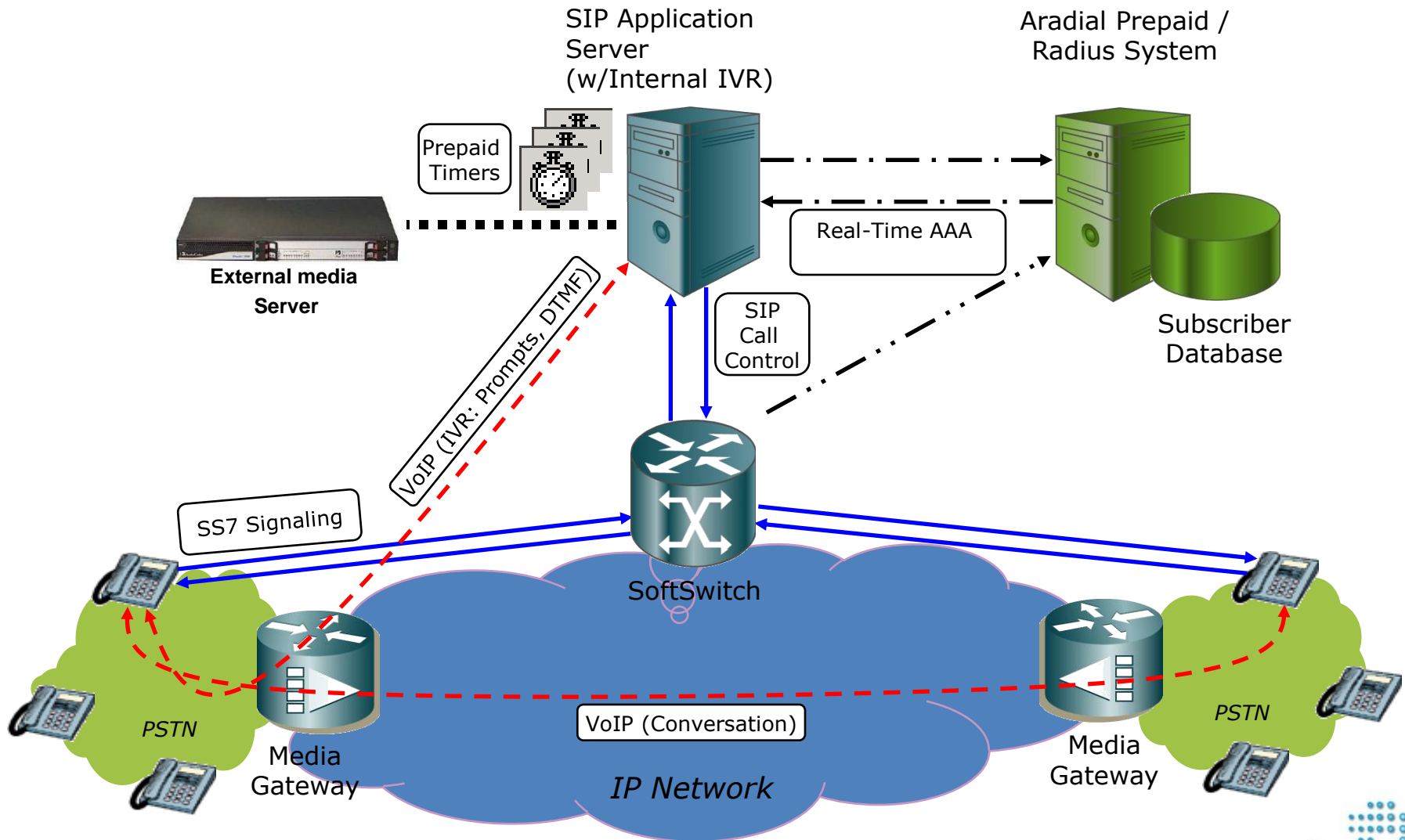
Prepaid VoIP with Aradial (Cont.)

- Self-care user module
- User and calling-card management, rating, import and export from/to CSV files
- Balance, duration and traffic enforcement
- User concurrence enforcement and view of concurrent calls from the administration tool
- Optional integration with SNMP-based NMS
- Multiple admin types
- Admin activity tracking
- External billing system interface using stored procedures or CORBA

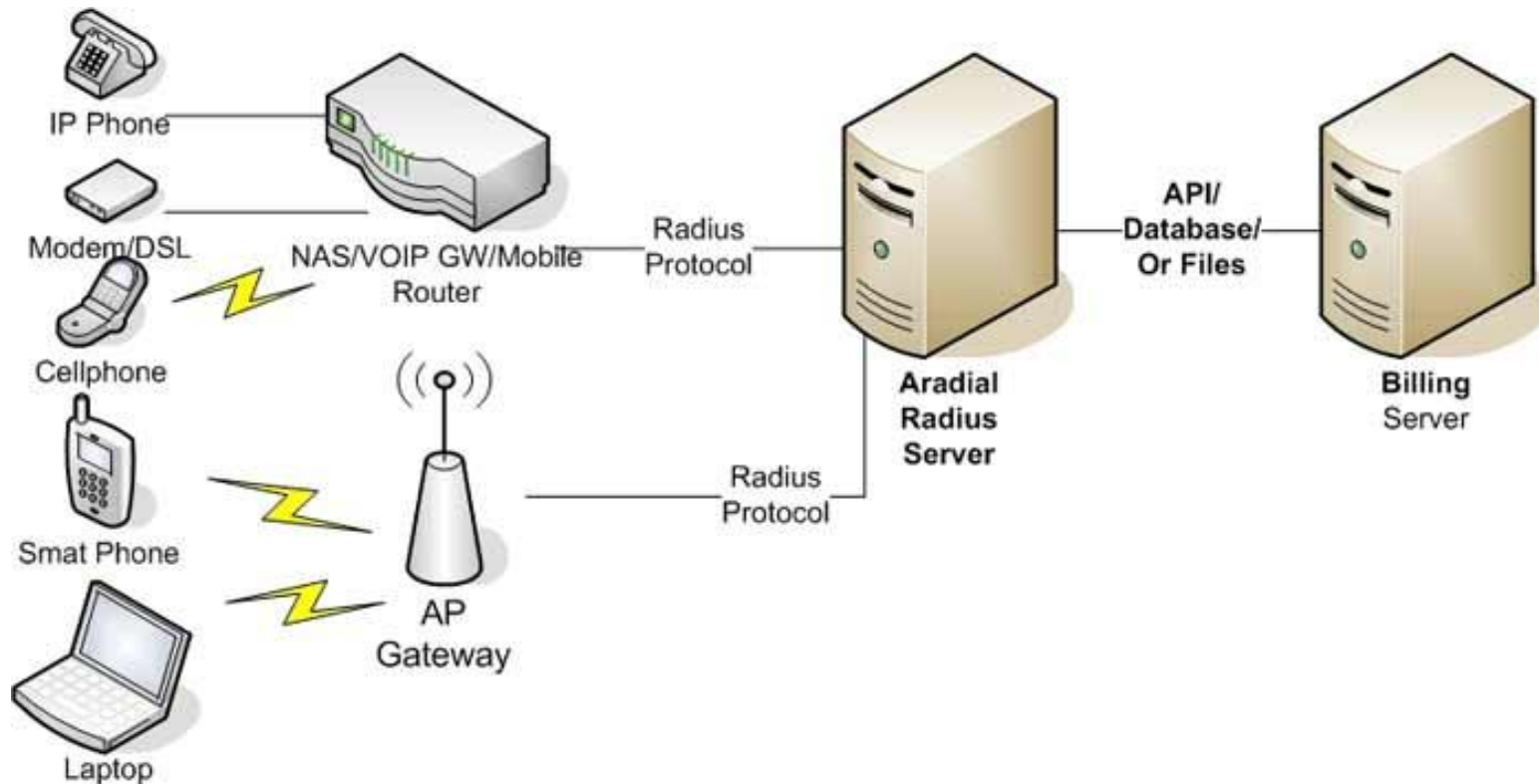
Prepaid VoIP & Calling Cards

- Calling-card based prepaid billing
- Calling-card generation, import and export
- Username or ANI based (caller ID) prepaid VoIP billing
- Rating according to call destination, time of day, day of week
- Different rounding intervals per tariff or per destination
- Call setup cost
- Replenishing API or voucher refilling with payment module.
- Support of multiple tariffs and destinations rating tables that can be assigned to a calling card
- Session and summary reports per calling card, system, destination and period
- Optional module – termination billing including wholesale credit limit and fraud control

Architecture



Typical Deployment Example





Thank You.

www.aradial.com