

Tweco[®]
Professional

Arcair[®]
Professional

Arc Welding / Gouging Equipment and Consumables

CATALOG

February 2007



www.tweco.com

Arc Welding Products and Accessories



- **Tweco® Spray Master™ MIG Guns**
- **Tweco® FABGUN™ 250 MIG Gun**
- **Tweco Gold “Eliminator®” Guns**
- **Tweco Traditional MIG Guns**
- **Special Application Guns, Outfits/Kits and Accessories**

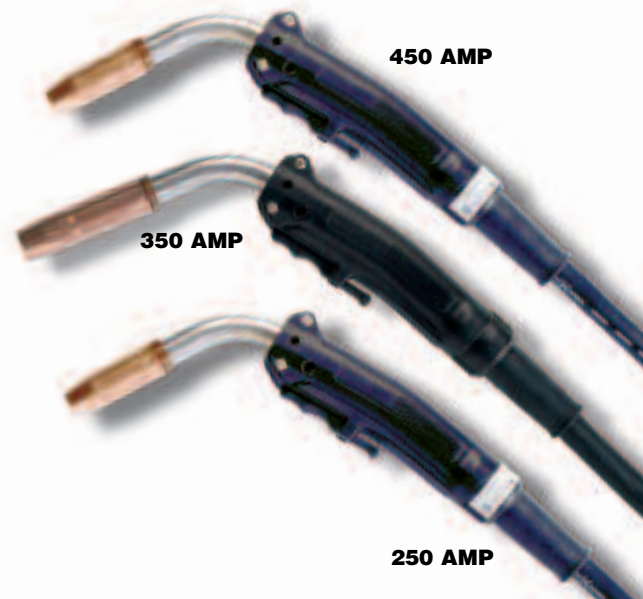
Spray Master™ Air-Cooled MIG Guns



SPRAY MASTER™

250, 350 & 450 AMP AIR-COOLED 80% duty cycle, mixed gases

- Heavy-duty contact tip and diffuser for improved performance in high heat applications
- Rated at 80% duty cycle using Argon/CO₂ gases
- Ergonomic handle design reduces welder's fatigue
- Simplified direct rear plug for ease of installation
- Easy to repair and maintain – only 10 parts
- Optional locking trigger or dual schedule trigger (350 & 450 Amp only)
- Ideal for use with Argon mixed gas for Spray and Pulse welding applications



250 AMP MIG GUN

Wire Size	Cable Length	Rear Connection Style (PART NO. / STOCK NO.)				Dual Schedule Trigger	Locking Trigger	Long Conductor Tubes
		Tweco*	Miller	Lincoln†	Euro-Kwik			
.035"-.045" 0,9-1,2mm Wire	10 ft. 3M	MS210-3545 1023-1100	MS210M-3545 1023-1110	N/A	MS210X-3545 1023-1125			
.035"-.045" 0,9-1,2mm Wire	12 ft. 4M	MS212-3545 1023-1101	MS212M-3545 1023-1111	MS212L-3545 1023-1136	MS212X-3545 1023-1126			
.035"-.045" 0,9-1,2mm Wire	15 ft. 5M	MS215-3545 1023-1102	MS215M-3545 1023-1112	N/A	MS215X-3545 1023-1127			
.035"-.045" 0,9-1,2mm Wire	20 ft. 6M	MS220-3545 1023-1103	MS220M-3545 1023-1113	N/A	N/A			
.035"-.045" 0,9-1,2mm Wire	25 ft. 8M	MS225-3545 1023-1108	MS225M-3545 1023-1118	N/A	MS225X-3545 1023-1133			

* May require adaptor plug for some feeders

† Fits Lincoln LN 7, 8, 9, SP200

350 AMP MIG GUN

Wire Size	Cable Length	Rear Connection Style (PART NO. / STOCK NO.)				Dual Schedule Trigger	Locking Trigger	Long Conductor Tubes
		Tweco*	Miller	Lincoln†	Euro-Kwik			
.045"-1/16" 1,2-1,6mm Wire	10 ft. 3M	MS310-116 1036-1610	MS310M-116 1036-1635	N/A	MS310X-116 1036-1618			
.045"-1/16" 1,2-1,6mm Wire	12 ft. 4M	MS312-116 1036-1613	MS312M-116 1036-1638	MS312L-116 1036-1646	MS312X-116 1036-1621			
.045"-1/16" 1,2-1,6mm Wire	15 ft. 5M	MS315-116 1036-1615	MS315M-116 1036-1640	MS315L-116 1036-1647	MS315X-116 1036-1623			
.045"-1/16" 1,2-1,6mm Wire	15 ft. 5M	MS315-116DS 1036-1631	MS315M-116DS 1036-1633	N/A	N/A	X		
.045"-1/16" 1,2-1,6mm Wire	15 ft. 5M	MS315-116LC 1036-1627	MS315M-116LC 1036-1629	N/A	MS315X-116LC 1036-1628		X	
.035"-.045" 0,9-1,2mm Wire	15 ft. 5M	MS315-3545 1036-1607	N/A	N/A	N/A			
.045"-1/16" 1,2-1,6mm Wire	20 ft. 6M	MS320-116 1036-1612	MS320M-116 1036-1637	N/A	N/A			
.045"-1/16" 1,2-1,6mm Wire	25 ft. 8M	MS325-116 1036-1617	MS325M-116 1036-1642	N/A	MS325X-116 1036-1620			

* May require adaptor plug for some feeders

† Fits Lincoln LN 7, 8, 9, SP200

U.S. Customer Care: 800-426-1888 / FAX 800-535-0557

450 AMP MIG GUN

Wire Size	Cable Length	Rear Connection Style (PART NO. / STOCK NO.)				Dual Schedule Trigger	Locking Trigger	Long Conductor Tubes
		Tweco*	Miller	Lincoln†	Euro-Kwik			
.045"-1/16" 1,2-1,6mm Wire	10 ft. 3M	MS410-116 1040-1050	MS410M-116 1040-1060	MS410L-116 1040-1070	MS410X-116 1040-1075			
.045"-1/16" 1,2-1,6mm Wire	12 ft. 4M	MS412-116 1040-1051	MS412M-116 1040-1061	N/A	MS412X-116 1040-1076			
.045"-1/16" 1,2-1,6mm Wire	12 ft. 4M	N/A	MS412M-116DS 1040-1096	N/A	N/A	X		
.045"-1/16" 1,2-1,6mm Wire	15 ft. 5M	MS415-116 1040-1052	MS415M-116 1040-1062	MS415L-116 1040-1072	MS415X-116 1040-1077			
.045"-1/16" 1,2-1,6mm Wire	15 ft. 5M	MS415-116DS 1040-1095	MS415M-116DS 1040-1097	N/A	N/A	X		
.045"-1/16" 1,2-1,6mm Wire	15 ft. 5M	MS415-116LC 1040-1090	MS415M-116LC 1040-1092	MS415L-116LC 1040-1074	MS415X-116LC 1040-1091		X	
.045"-1/16" 1,2-1,6mm Wire	15 ft. 5M	MS415-116LM 1040-1053	MS415M-116LM 1040-1063	MS415L-116LM 1040-1073	MS415X-116LM 1040-1078			X
.045"-1/16" 1,2-1,6mm Wire	20 ft. 6M	MS420-116 1040-1059	MS420M-116 1040-1064	N/A	N/A			
.045"-1/16" 1,2-1,6mm Wire	20 ft. 6M	N/A	MS420M-116DS 1040-1098	N/A	N/A	X		
.045"-1/16" 1,2-1,6mm Wire	25 ft. 8M	MS425-116 1040-1058	MS425M-116 1040-1068	MS425L-116 1040-1071	MS425X-116 1040-1083			
.045"-1/16" 1,2-1,6mm Wire	25 ft. 8M	N/A	MS425M-116DS 1040-1099	N/A	N/A	X		
.045"-1/16" 1,2-1,6mm Wire	25 ft. 8M	N/A	MS425M-116LM 1040-1069	N/A	N/A			X

* May require adaptor plug for some feeders

† Fits Lincoln LN 7, 8, 9, SP200

FABGUN™ 250 Air-Cooled MIG Gun



FABGUN™ 250 250 AMP AIR-COOLED 60% duty cycle, CO₂ Gas



- Simple, reliable gun construction with fewer parts to simplify maintenance
- Easy gun selection with only three MIG gun models for use on many major manufacturers' welding systems
- A convenient color-coded selection guide that makes it easy to match the right FABGUN model to the power supply system used
- Lightweight, ergonomic handle for more comfort and reduced fatigue
- Standard Tweco® consumables readily available
- Genuine Tweco quality and reliability at an attractive, highly competitive price

250 AMP MIG GUN

Wire Size	Cable Length	Rear Connection Style (PART NO. / STOCK NO.)					Dual Schedule Trigger	Locking Trigger	Long Conductor Tubes
		Tweco*	Miller	Lincoln	Euro-Kwik	Hobart			
.045"	12 ft.	FAB250T-12	FAB250M-12	FAB250L-12	FAB250X-12	FAB250H-12			
1,2mm Wire (MAX)	4M	1020-1550	1020-1551	1020-1552	1020-1553	1020-1554			

* May require adaptor plug for some feeders

See below for specific welding system compatibility by part number/manufacturer.

Thermal Arc® / ESAB® / Lincoln® / Hobart®	
FAB250T-12	1020-1550
THERMAL ARC	LINCOLN
Fabricator 201	SP150
Fabricator 210	SP130
Fabricator 250	Weldpac 150
Fabricator 251	SP135T
Fabricator 131	SP135 Plus
Fabricator 181	SP175T
ESAB	SP175 Plus
Multimaster 260	Power Mig 200
HOBART	Power Mig 255
Handler	Wirematic 250
	Wirematic 255 (Except Digital)

Lincoln®	
FAB250L-12	1020-1552
LINCOLN	
SP150	
SP200	

If your system or feeder is not listed, please call 800-688-9326 or contact your local distributor.

Miller® Electric	
FAB250M-12	1020-1551
MILLER ELECTRIC	
Millermatic 135	Millermatic 120
Millermatic 175	Millermatic 130
Millermatic 210	Millermatic 150
Millermatic Pulser	Millermatic 200
Millermatic Vintage	Millermatic 35
Millermatic 251	(1980 & newer)
Millermatic 300	Millermatic 250
Cricket	Millermatic 185
Millermatic 90	Porta-Mig

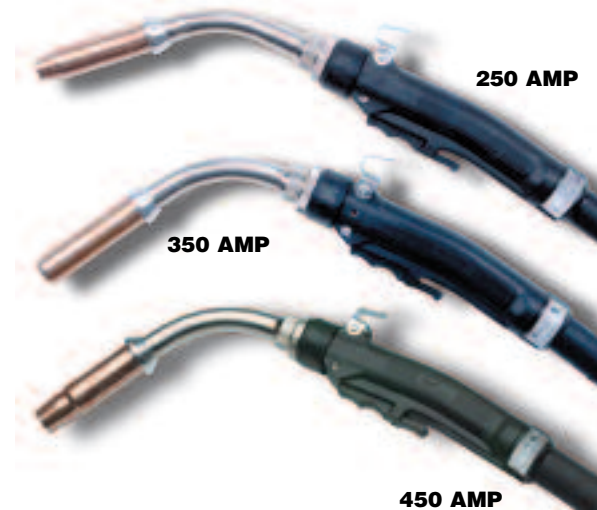
Euro-Kwik	
FAB250M-12	1020-1551
EURO-KWIK	ESAB
MigMaster 250	
MigMaster 210	
MultiMaster 160	
LINCOLN	
SP250	

Hobart	
FAB250M-12	1020-1551
HOBART	
Handler 135	
Handler 175	
THERMAL ARC	
Fabricator 130	
Fabricator 180	

ESAB and Multimaster are registered trademarks of ESAB AB; LINCOLN, Weldpac, Power Mig and Wirematic are registered trademarks of Lincoln Electric Co.; MILLER, Millermatic, Cricket and Porto-Mig are registered trademarks of Miller Electric Mfg. Co.

COMPACT ELIMINATOR® 250, 350 & 450 AMP AIR-COOLED 60% duty cycle, CO₂ Gas

- Front and rear spring strain relief and cable support
- Compact, ergonomic handle design
- Durable metal jacketed conductor tube
- Patented, extended life consumables



250 AMP GUN ASSEMBLIES

Wire Size	Cable Length	Rear Connection Style (PART NO. / STOCK NO.)			
		Tweco*	Miller	Lincoln†	Euro-Kwik
.035" 0,9mm Wire	10 ft. 3M	N/A	N/A	ELC210L-3035 1028-1178	N/A
.035" 0,9mm Wire	12 ft. 4M	N/A	N/A	ELC212L-3035 1028-1182	N/A
.035" 0,9mm Wire	15 ft. 5M	N/A	N/A	ELC215L-3035 1028-1186	N/A
.045" 1,2mm Wire	10 ft. 3M	ELC210-4045 1028-1104	ELC210M-4045 1028-1154	N/A	XELC210-4045 1028-1129
.045" 1,2mm Wire	12 ft. 4M	ELC212-4045 1028-1108	ELC212M-4045 1028-1158	N/A	XELC212-4045 1028-1133
.045" 1,2mm Wire	15 ft. 5M	ELC215-4045 1028-1112	ELC215M-4045 1028-1162	N/A	XELC215-4045 1028-1137
.045" 1,2mm Wire	20 ft. 6M	N/A	ELC220M-4045 1028-1166	N/A	N/A
.045" 1,2mm Wire	25 ft. 8M	ELC225-4045 1028-1120	ELC225M-4045 1028-1170	ELC225L-4045 1028-1195	N/A

* May require adaptor plug for some feeders

† Fits Lincoln LN 7, 8, 9, SP200

350 AMP GUN ASSEMBLIES

Wire Size	Cable Length	Rear Connection Style (PART NO. / STOCK NO.)			
		Tweco*	Miller	Lincoln†	Euro-Kwik
.035"-.045" 0,9-1,2mm Wire	10 ft. 3M	ELC310-3545 1038-1000	ELC310M-3545 1038-1050	N/A	N/A
.035"-.045" 0,9-1,2mm Wire	12 ft. 4M	ELC312-3545 1038-1001	ELC312M-3545 1038-1051	N/A	N/A
.035"-.045" 0,9-1,2mm Wire	15 ft. 5M	ELC315-3545 1038-1002	ELC315M-3545 1038-1052	ELC315L-3545 1038-1077	XELC315-3545 1038-1027

* May require adaptor plug for some feeders

† Fits Lincoln LN 7, 8, 9, SP200

Eliminator® Style MIG Guns



450 AMP GUN ASSEMBLIES

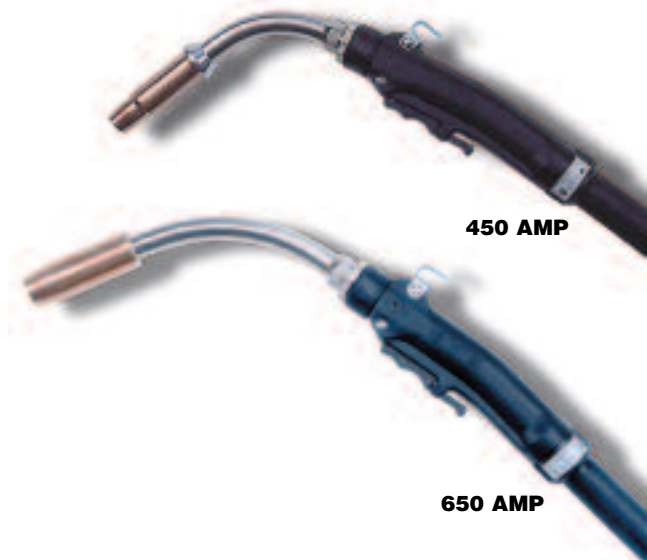
Wire Size	Cable Length	Rear Connection Style (PART NO. / STOCK NO.)			
		Tweco*	Miller	Lincoln†	Euro-Kwik
.035"-.045" 0,9-1,2mm Wire	10 ft. 3M	ELC410-3545 1048-1200	ELC410M-3545 1048-1250	ELC410L-3545 1048-1275	XELC410-3545 1048-1225
.035"-.045" 0,9-1,2mm Wire	12 ft. 4M	ELC412-3545 1048-1205	ELC412M-3545 1048-1255	ELC412L-3545 1048-1280	XELC412-3545 1048-1230
.035"-.045" 0,9-1,2mm Wire	15 ft. 5M	ELC415-3545 1048-1210	ELC415M-3545 1048-1260	ELC415L-3545 1048-1285	XELC415-3545 1048-1235
.035"-.045" 0,9-1,2mm Wire	20 ft. 6M	N/A	ELC420M-3545 1048-1265	N/A	N/A
.035"-.045" 0,9-1,2mm Wire	25 ft. 8M	N/A	N/A	ELC425L-3545 1048-1295	N/A
.045"-1/16" 1,2-1,6mm Wire	20 ft. 6M	ELC420-116 1048-1216	N/A	N/A	N/A
.045"-1/16" 1,2-1,6mm Wire	25 ft. 8M	ELC425-116 1048-1221	ELC425M-116 1048-1271	N/A	N/A

* May require adaptor plug for some feeders

† Fits Lincoln LN 7, 8, 9, SP200

STANDARD ELIMINATOR® 450 & 650 AMP AIR-COOLED 60% duty cycle, CO₂ Gas

- Front and rear spring strain relief and cable support
- Articulating conductor tube
- Durable metal jacketed conductor tube
- Patented, extended life consumables



450 AMP GUN ASSEMBLIES

Wire Size	Cable Length	Rear Connection Style (PART NO. / STOCK NO.)			
		Tweco*	Miller	Lincoln†	Euro-Kwik
.035"-.045" 0,9-1,2mm Wire	15 ft. 5M	EL415-3545 1048-1112	EL415M-3545 1048-1162	EL415L-3545 1048-1190	XEL415-3545 1048-1140
.035"-.045" 0,9-1,2mm Wire	20 ft. 6M	N/A	EL420M-3545 1048-1170	N/A	N/A
1/16" 1,6mm Wire	15 ft. 5M	N/A	EL415M-116 1048-1163	EL415L-116 1048-1191	N/A
.045"-1/16" 1,2-1,6mm Wire	25 ft. 8M	EL425-116 1048-1126	N/A	N/A	N/A
5/64" 2,0mm Wire	15 ft. 5M	EL415-564 1048-1114	N/A	N/A	N/A

* May require adaptor plug for some feeders

† Fits Lincoln LN 7, 8, 9, SP200

650 AMP GUN ASSEMBLIES

Wire Size	Cable Length	Rear Connection Style (PART NO. / STOCK NO.)			
		Tweco*	Miller	Lincoln†	Euro-Kwik
.045"-1/16" 1,2-1,6mm Wire	12 ft. 4M	EL612-116 1068-1107	N/A	N/A	N/A
3/32" 2,4mm Wire	15 ft. 5M	EL615-332 1068-1115	EL615M-332 1068-1165	EL615L-332 1068-1195	N/A

* May require adaptor plug for some feeders

† Fits Lincoln LN 7, 8, 9, SP200

Traditional Style MIG Guns



MINI-MIG-GUNS

160 AMP AIR-COOLED

60% duty cycle, CO₂ Gas

- Light-duty hobby gun
- Neoprene insulated conductor tube
- Strain relief and cable support



160 AMP

MINI-MIG-GUN ASSEMBLIES

Wire Size	Cable Length	Rear Connection Style (PART NO. / STOCK NO.)			
		Tweco*	Miller	Lincoln†	Euro-Kwik
.023" 0,6mm Wire	10 ft. 3M	23-10 1000-1121	M23-10 1000-1210	N/A	X23-10 1000-1621
.030"- .035" 0,8mm-0,9mm	10 ft. 3M	35-10 1000-1131	M35-10 1000-1211	L35-10 1000-1231	X35-10 1000-1631
.030"- .035" 0,8mm-0,9mm	12 ft. 4M	35-12 1000-1132	M35-12 1000-1213	L35-12 1000-1232	X35-12 1000-1632
.030"- .035" 0,8mm-0,9mm	15 ft. 5M	35-15 1000-1133	M35-15 1000-1215	L35-15 1000-1233	X35-15 1000-1633
.030"- .035" 0,8mm-0,9mm	20 ft. 6M	35-20 1000-1134	N/A	N/A	N/A
.040"- .045" 1,0mm-1,2mm	10 ft. 3M	45-10 1000-1141	N/A	N/A	X45-10 1000-1641
.040"- .045" 1,0mm-1,2mm	12 ft. 4M	45-12 1000-1142	N/A	N/A	N/A
.040"- .045" 1,0mm-1,2mm	15 ft. 5M	45-15 1000-1143	N/A	N/A	N/A

* May require adaptor plug for some feeders

† Fits Lincoln LN 7, 8, 9, SP200

NO. 1 MIG-GUNS

180 AMP AIR-COOLED

60% duty cycle, CO₂ Gas

- Neoprene insulated quick-change conductor tubes swivels 360 degrees.
- Enhanced direct plug capabilities.



180 AMP

NO. 1 MIG-GUN ASSEMBLIES

Wire Size	Cable Length	Rear Connection Style (PART NO. / STOCK NO.)			
		Tweco*	Miller	Lincoln†	Euro-Kwik
.023" 0,6mm Wire	10 ft. 3M	110-23 1010-1101	N/A	N/A	N/A
.030"- .035" 0,8mm-0,9mm	10 ft. 3M	110-3035 1010-1111	M110-3035 1010-1131	N/A	N/A
.030"- .035" 0,8mm-0,9mm	12 ft. 4M	112-3035 1010-1112	M112-3035 1010-1133	N/A	N/A
.030"- .035" 0,8mm-0,9mm	15 ft. 5M	115-3035 1010-1113	M115-3035 1010-1135	L115-3035 1010-1145	N/A
.030"- .035" 0,8mm-0,9mm	20 ft. 6M	120-3035 1010-1114	N/A	N/A	N/A
.040"- .045" 1,0mm-1,2mm	10 ft. 3M	110-4045 1010-1121	N/A	N/A	X110-4045 1010-1621
.040"- .045" 1,0mm-1,2mm	12 ft. 4M	112-4045 1010-1122	N/A	N/A	X112-4045 1010-1622
.040"- .045" 1,0mm-1,2mm	15 ft. 5M	115-4045 1010-1123	N/A	N/A	X115-4045 1010-1623
.040"- .045" 1,0mm-1,2mm	20 ft. 6M	120-4045 1010-1124	N/A	N/A	N/A

* May require adaptor plug for some feeders

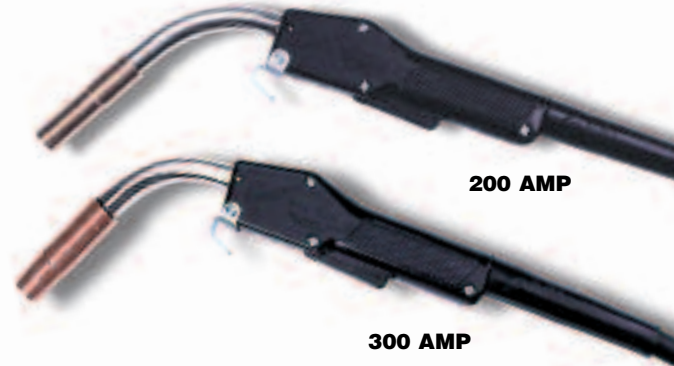
† Fits Lincoln LN 7, 8, 9, SP200

**PROFESSIONAL'S CHOICE
MIG-GUNS**

**200 & 300 AMP AIR-COOLED
60% duty cycle, CO₂ Gas**

- Industry Standard
- Metal jacket conductor tube
- Enhanced direct plug capabilities

NO. 2 MIG-GUN ASSEMBLIES



Wire Size	Cable Length	Rear Connection Style (PART NO. / STOCK NO.)					
		Tweco*	Tweco*†	Miller	Lincoln‡	Euro-Kwik	Euro-Kwik†
.030"-.035" 0,8mm-0,9mm	10 ft. 3M	210-3035 1020-1111	N/A	M210-3035 1020-1130	L210-3035 1020-1140	N/A	N/A
.030"-.035" 0,8mm-0,9mm	12 ft. 4M	212-3035 1020-1112	N/A	M212-3035 1020-1132	L212-3035 1020-1142	N/A	N/A
.030"-.035" 0,8mm-0,9mm	15 ft. 5M	215-3035 1020-1113	N/A	M215-3035 1020-1134	L215-3035 1020-1144	N/A	N/A
.030"-.035" 0,8mm-0,9mm	20 ft. 6M	220-3035 1020-1114	N/A	N/A	N/A	X220-3035 1020-1614	N/A
.030"-.035" 0,8mm-0,9mm	25 ft. 8M	225-3035 1020-1115	N/A	N/A	N/A	X225-3035 1020-1615	N/A
.040"-.045" 1,0mm-1,2mm	10 ft. 3M	210-4045 1020-1121	N/A	M210-4045 1020-1131	N/A	X210-4045 1020-1621	X210FN-4045 1020-1651
.040"-.045" 1,0mm-1,2mm	12 ft. 4M	212-4045 1020-1122	212FN-4045 1020-1322	M212-4045 1020-1133	N/A	X212-4045 1020-1622	X212FN-4045 1020-1652
.040"-.045" 1,0mm-1,2mm	15 ft. 5M	215-4045 1020-1123	215FN-4045 1020-1323	M215-4045 1020-1135	N/A	X215-4045 1020-1623	X215FN-4045 1020-1653
.040"-.045" 1,0mm-1,2mm	20 ft. 6M	220-4045 1020-1124	N/A	N/A	N/A	N/A	N/A
.040"-.045" 1,0mm-1,2mm	25 ft. 8M	225-4045 1020-1125	N/A	N/A	N/A	N/A	N/A

* May require adaptor plug for some feeders ‡ Fits Lincoln LN 7, 8, 9 Feeders

† FN guns are furnished with 24CT nozzles, 34CT insulators, & 14H contact tips

NO. 3 MIG-GUN ASSEMBLIES

Wire Size	Cable Length	Rear Connection Style (PART NO. / STOCK NO.)			
		Tweco*	Miller	Lincoln†	Euro-Kwik
.035"-.045" 0,9-1,2mm Wire	10 ft. 3M	310-3545 1030-1101	M310-3545 1030-1130	L310-3545 1030-1140	X310-3545 1030-1601
.035"-.045" 0,9-1,2mm Wire	12 ft. 4M	312-3545 1030-1102	M312-3545 1030-1133	L312-3545 1030-1143	X312-3545 1030-1602
.035"-.045" 0,9-1,2mm Wire	15 ft. 5M	315-3545 1030-1103	M315-3545 1030-1136	L315-3545 1030-1146	X315-3545 1030-1603
.035"-.045" 0,9-1,2mm Wire	20 ft. 6M	320-3545 1030-1104	N/A	N/A	X320-3545 1030-1604
.035"-.045" 0,9-1,2mm Wire	25 ft. 8M	325-3545 1030-1105	N/A	N/A	N/A
.045"-1/16" 1,2-1,6mm Wire	10 ft. 3M	310-116 1030-1111	N/A	N/A	N/A
.045"-1/16" 1,2-1,6mm Wire	12 ft. 4M	312-116 1030-1112	N/A	N/A	N/A
.045"-1/16" 1,2-1,6mm Wire	15 ft. 5M	315-116 1030-1113	N/A	N/A	X315-116 1030-1613
.045"-1/16" 1,2-1,6mm Wire	20 ft. 6M	320-116 1030-1114	N/A	N/A	N/A
.045"-1/16" 1,2-1,6mm Wire	25 ft. 8M	325-116 1030-1115	N/A	N/A	N/A

* May require adaptor plug for some feeders

† Fits Lincoln LN 7, 8, 9 Feeders

Traditional Style MIG Guns



PROFESSIONAL'S CHOICE MIG-GUNS

**400 AMP AIR-COOLED
60% duty cycle, CO₂ Gas**

- Industry Standard
- Metal jacket conductor tube
- Enhanced direct plug capabilities



400 AMP

NO. 4 MIG-GUN ASSEMBLIES

Wire Size	Cable Length	Rear Connection Style (PART NO. / STOCK NO.)						
		Tweco*	Tweco*†	Tweco*‡	Miller	Lincoln§	Euro-Kwik	Euro-Kwik†
.035"-.045" 0,9mm-1,2mm	10 ft. 3M	410-3545 1040-1101	N/A	N/A	M410-3545 1040-1130	L410-3545 1040-1140	X410-3545 1040-1601	N/A
.035"-.045" 0,9mm-1,2mm	12 ft. 4M	412-3545 1040-1102	N/A	DS412-3545 1040-1502	M412-3545 1040-1133	L412-3545 1040-1143	X412-3545 1040-1602	X412FN-3545 1040-1632
.035"-.045" 0,9mm-1,2mm	15 ft. 5M	415-3545 1040-1103	N/A	DS415-3545 1040-1503	M415-3545 1040-1136	L415-3545 1040-1146	X415-3545 1040-1603	N/A
.035"-.045" 0,9mm-1,2mm	20 ft. 6M	420-3545 1040-1104	N/A	N/A	M420-3545 1040-1126	N/A	X420-3545 1040-1604	N/A
.035"-.045" 0,9mm-1,2mm	25 ft. 8M	425-3545 1040-1105	N/A	N/A	M425-3545 1040-1129	N/A	X425-3545 1040-1605	N/A
.045"-1/16" 1,2-1,6mm Wire	10 ft. 3M	410-116 1040-1111	N/A	N/A	M410-116 1040-1131	L410-116 1040-1141	N/A	N/A
.045"-1/16" 1,2-1,6mm Wire	12 ft. 4M	412-116 1040-1112	412FN-116 1040-1312	N/A	M412-116 1040-1134	L412-116 1040-1144	N/A	X412FN-116 1040-1642
.045"-1/16" 1,2-1,6mm Wire	15 ft. 5M	415-116 1040-1113	N/A	DS415-116 1040-1513	M415-116 1040-1137	L415-116 1040-1147	X415-116 1040-1613	N/A
.045"-1/16" 1,2-1,6mm Wire	20 ft. 6M	420-116 1040-1114	N/A	DS420-116 1040-1514	M420-116 1040-1127	N/A	N/A	N/A
.045"-1/16" 1,2-1,6mm Wire	25 ft. 8M	425-116 1040-1115	N/A	N/A	M425-116 1040-1128	N/A	N/A	N/A
5/64" 2,0mm Wire	10 ft. 3M	410-564 1040-1121	N/A	N/A	N/A	N/A	N/A	N/A
5/64" 2,0mm Wire	12 ft. 4M	412-564 1040-1122	N/A	N/A	N/A	N/A	N/A	N/A
5/64" 2,0mm Wire	15 ft. 5M	415-564 1040-1123	N/A	N/A	M415-564 1040-1138	N/A	N/A	N/A

* May require adaptor plug for some feeders

† FN guns are furnished with 24CT nozzles, 34CT insulators, & 14H contact tips

‡ DS guns are furnished with dual schedule triggers and connectors

§ Fits Lincoln LN 7, 8, 9, SP200

**PROFESSIONAL'S CHOICE
MIG-GUNS**

500 & 600 AMP AIR-COOLED

60% duty cycle, CO₂ Gas

- Industry Standard
- Metal jacket conductor tube with high heat insulation
- Enhanced direct plug capabilities



NO. 5 MIG-GUN ASSEMBLIES

Wire Size	Cable Length	Rear Connection Style (PART NO. / STOCK NO.)				
		Tweco*	Tweco*†	Miller	Lincoln‡	Euro-Kwik
.035"-.045" 0,9mm-1,2mm	10 ft. 3M	510-3545 1050-1101	DS510-3545 1050-1501	N/A	N/A	N/A
.035"-.045" 0,9mm-1,2mm	12 ft. 4M	512-3545 1050-1102	N/A	N/A	N/A	N/A
.035"-.045" 0,9mm-1,2mm	15 ft. 5M	515-3545 1050-1103	N/A	M515-3545 1050-1172	N/A	N/A
.035"-.045" 0,9mm-1,2mm	20 ft. 6M	520-3545 1050-1104	N/A	N/A	N/A	N/A
.035"-.045" 0,9mm-1,2mm	25 ft. 8M	525-3545 1050-1105	N/A	N/A	N/A	N/A
.045"-1/16" 1,2-1,6mm Wire	10 ft. 3M	510-116 1050-1111	N/A	M510-116 1050-1161	N/A	N/A
.045"-1/16" 1,2-1,6mm Wire	12 ft. 4M	512-116 1050-1112	N/A	M512-116 1050-1167	N/A	N/A
.045"-1/16" 1,2-1,6mm Wire	15 ft. 5M	515-116 1050-1113	DS515-116 1050-1513	M515-116 1050-1173	N/A	X515-116 1050-1613
.045"-1/16" 1,2-1,6mm Wire	20 ft. 6M	520-116 1050-1114	DS520-116 1050-1514	N/A	N/A	N/A
.045"-1/16" 1,2-1,6mm Wire	25 ft. 8M	525-116 1050-1115	N/A	N/A	N/A	N/A
5/64" 2,0mm Wire	10 ft. 3M	N/A	N/A	N/A	N/A	X510-564 1050-1621
3/32" 2,4mm Wire	10 ft. 3M	510-332 1050-1131	N/A	N/A	N/A	N/A
3/32" 2,4mm Wire	12 ft. 4M	512-332 1050-1132	N/A	N/A	L512-332 1050-1641	N/A
3/32" 2,4mm Wire	15 ft. 5M	515-332 1050-1133	N/A	N/A	N/A	N/A
7/64" 2,8mm Wire	10 ft. 3M	510-764 1050-1141	N/A	L515-332 1050-1642	N/A	N/A

* Adapter kits are available to fit Tweco rear connections to most wire feeders ‡ Fits Lincoln LN 7, 8, 9, SP200

† DS guns are furnished with dual schedule triggers and connectors

NO. 6 MIG-GUN ASSEMBLIES

Wire Size	Cable Length	Rear Connection Style (PART NO. / STOCK NO.)	
		Tweco*	Miller
.035"-.045" 0,9mm-1,2mm	15 ft. 5M	N/A	M615-3545 1060-1227
.045"-1/16" 1,2-1,6mm Wire	15 ft. 5M	615-116 1060-1207	M615-116 1060-1232
3/32" 2,4mm Wire	15 ft. 5M	615-332 1060-1217	M615-332 1060-1242

* Adapter kits are available to fit Tweco rear connections to most wire feeders

Tuff-N-Lite Air-Cooled MIG Guns



**TUFF-N-LITE
350 AMP AIR-COOLED
60% duty cycle, CO₂ Gas**



350 AMP

- Lightweight rugged design
- Quick change conductor tube
- Field repairable cable connectors

350 AMP GUN ASSEMBLIES

Wire Size	Cable Length	Rear Connector Style (PART NO. / STOCK NO.)	
		Tweco*	Miller
.045"-1/16" 1,2-1,6mm Wire	10 ft. 3M	TL350-10-116 1036-1035	TL350M-10-116 1036-1235
.045"-1/16" 1,2-1,6mm Wire	12 ft. 4M	TL350-12-116 1036-1036	TL350M-12-116 1036-1236
.045"-1/16" 1,2-1,6mm Wire	15 ft. 5M	TL350-15-116 1036-1037	TL350M-15-116 1036-1237

* May require adapter plug for some feeders

**SUPRA® XT
450 AMP AIR-COOLED
60% duty cycle, CO₂ Gas**

- Field repairable cable connections
- Steel spring cable strain relief
- One-piece molded handle for high impact strength
- Three styles of front end consumables



450 AMP

450 AMP GUN ASSEMBLIES

SEHD Furnished with HD Consumables

Wire Size	Cable Length	Rear Connection Style (PART NO. / STOCK NO.)			
		Tweco*	Miller	Lincoln†	Euro-Kwik
.035"-.045" 0,9mm-1,2mm	10 ft. 3M	N/A	N/A	N/A	SEHD400X-3M1,2 1040-1435
.035"-.045" 0,9mm-1,2mm	12 ft. 4M	SEHD400-4M1,2 1040-1328	N/A	N/A	N/A
.045"-1/16" 1,2-1,6mm Wire	10 ft. 3M	SEHD400-3M1,6 1040-1326	SEHD400M-3M1,6 1040-1336	SEHD400L-3M1,6 1040-1426	SEHD400X-3M1,6 1040-1436
.045"-1/16" 1,2-1,6mm Wire	12 ft. 4M	SEHD400-4M1,6 1040-1329	SEHD400M-4M1,6 1040-1339	SEHD400L-4M1,6 1040-1429	SEHD400X-4M1,6 1040-1439
.045"-1/16" 1,2-1,6mm Wire	15 ft. 5M	SEHD400-5M1,6 1040-1332	SEHD400M-5M1,6 1040-1342	SEHD400L-5M1,6 1040-1432	SEHD400X-5M1,6 1040-1442
1/16"-5/64" 1,6mm-2,0mm	10 ft. 3M	N/A	N/A	SEHD400L-3M2,0 1040-1427	N/A
1/16"-5/64" 1,6mm-2,0mm	12 ft. 4M	N/A	SEHD400M-4M2,0 1040-1340	SEHD400L-4M2,0 1040-1430	N/A

SEL Furnished with Eliminator Consumables

Wire Size	Cable Length	Rear Connection Style (PART NO. / STOCK NO.)			
		Tweco*	Miller	Lincoln†	Euro-Kwik
.035"-.045" 0,9mm-1,2mm	10 ft. 3M	N/A	N/A	N/A	SEL400X-3M1,2 1040-1225
.045"-1/16" 1,2-1,6mm Wire	10 ft. 3M	SEL400-3M1,6 1040-1201	SEL400M-3M1,6 1040-1211	SEL400L-3M1,6 1040-1236	SEL400X-3M1,6 1040-1226
.045"-1/16" 1,2-1,6mm Wire	12 ft. 4M	SEL400-4M1,6 1040-1204	SEL400M-4M1,6 1040-1214	SEL400L-4M1,6 1040-1239	SEL400X-4M1,6 1040-1229
.045"-1/16" 1,2-1,6mm Wire	15 ft. 5M	SEL400-5M1,6 1040-1206	SEL400M-5M1,6 1040-1217	SEL400L-5M1,6 1040-1242	SEL400X-5M1,6 1040-1232
1/16"-5/64" 1,6mm-2,0mm	10 ft. 3M	N/A	N/A	N/A	SEL400X-3M2,0 1040-1227
1/16"-5/64" 1,6mm-2,0mm	15 ft. 5M	SEL400-5M2,0 1040-1208	N/A	N/A	N/A

SE Furnished with Standard No. 5 Consumables

Wire Size	Cable Length	Rear Connection Style (PART NO. / STOCK NO.)			
		Tweco*	Miller	Lincoln†	Euro-Kwik
.045"-1/16" 1,2-1,6mm Wire	10 ft. 3M	SE400-3M1,6 1040-1151	SE400M-3M1,6 1040-1161	SE400L-3M1,6 1040-1186	SE400X-3M1,6 1040-1176
.045"-1/16" 1,2-1,6mm Wire	12 ft. 4M	SE400-4M1,6 1040-1154	SE400M-4M1,6 1040-1164	SE400L-4M1,6 1040-1189	SE400X-4M1,6 1040-1179
.045"-1/16" 1,2-1,6mm Wire	15 ft. 5M	SE400-5M1,6 1040-1157	SE400M-5M1,6 1040-1167	SE400L-5M1,6 1040-1192	SE400X-5M1,6 1040-1182

* May require adapter plug for some feeders

† Fits Lincoln LN 7, 8, 9, SP200

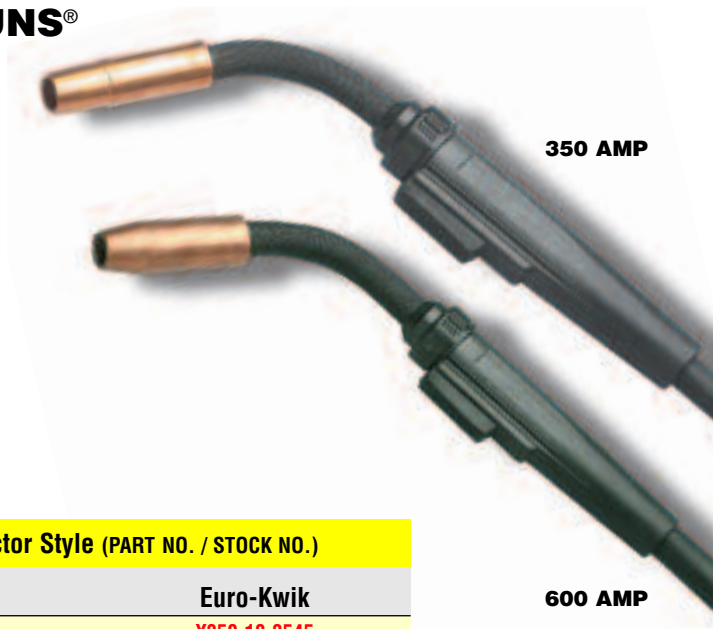
Air-Cooled Supra-MIG-Guns®



AIR-COOLED SUPRA-MIG-GUNS®

350 & 600 AMP
60% duty cycle, CO₂ Gas

- Field repairable cable connectors
- One-piece molded handle for high impact strength



350 AMP GUN ASSEMBLIES

Wire Size	Cable Length	Rear Connector Style (PART NO. / STOCK NO.)	
		Tweco*	Euro-Kwik
.035"-.045" 0,9mm-1,2mm	10 ft. 3M	N/A	X350-10-3545 1035-1601
.035"-.045" 0,9mm-1,2mm	12 ft. 4M	N/A	X350-12-3545 1035-1602
.035"-.045" 0,9mm-1,2mm	15 ft. 5M	N/A	X350-15-3545 1035-1603
.035"-.045" 0,9mm-1,2mm	20 ft. 6,1M	T350-20-3545 1035-1104	N/A
.045"-1/16" 1,2-1,6mm Wire	10 ft. 3M	T350-10-116 1035-1111	N/A
.045"-1/16" 1,2-1,6mm Wire	12 ft. 4M	T350-12-116 1035-1112	N/A
.045"-1/16" 1,2-1,6mm Wire	15 ft. 5M	T350-15-116 1035-1113	N/A
.045"-1/16" 1,2-1,6mm Wire	25 ft. 7,2M	T350-25-116 1035-1115	N/A
1/16"-5/64" 1,6mm-2,0mm	15 ft. 5M	T350-15-564 1035-1123	N/A
3/64" Al wire 1,2mm	10 ft. 3M	TAL350-10-3545 1035-1001	N/A
3/64"-1/16" Al wire 1,2mm-1,6mm	10 ft. 3M	TAL350-10-116 1035-1011	N/A

600 AMP GUN ASSEMBLIES

Wire Size	Cable Length	Rear Connector Style (PART NO. / STOCK NO.)	
		Tweco*	
.045"-1/16" 1,2-1,6mm Wire	10 ft. 3M	T610-116 1060-1111	
.045"-1/16" 1,2-1,6mm Wire	12 ft. 4M	T612-116 1060-1112	
.045"-1/16" 1,2-1,6mm Wire	15 ft. 5M	T615-116 1060-1113	

* May require adapter plug for some feeders

WATER-COOLED SUPRA-MIG-GUNS®

300 & 450 AMP 100% duty cycle, CO₂ Gas

- Cool running for maximum efficiency and comfort.
- Provides maximum service and performance for any given type of welding application.
- Quick connections make maintenance a snap.
- Lightweight



300 AMP GUN ASSEMBLIES

Wire Size	Cable Length	Rear Connection Style (PART NO. / STOCK NO.)		
		Tweco*	Miller	Euro-Kwik
.045" 1,2mm Wire	10 ft.	SW310-4045	SW310M-4045	SW310X-4045
	3M	1033-1105	1033-1130	1033-1115
.045" 1,2mm Wire	12 ft.	SW312-4045	SW312M-4045	SW312X-4045
	4M	1033-1106	1033-1131	1033-1116
.045" 1,2mm Wire	15 ft.	SW315-4045	SW315M-4045	SW315X-4045
	5M	1033-1107	1033-1132	1033-1117

* May require adaptor plug for some feeders

450 AMP GUN ASSEMBLIES

Wire Size	Cable Length	Rear Connection Style (PART NO. / STOCK NO.)		
		Tweco*	Miller	Euro-Kwik
.035-.045" 0,9-1,2mm	12 ft.	SW412-3545	SW412M-3545	N/A
	4M	1044-1151	1044-1176	
.035-.045" 0,9-1,2mm	15 ft.	SW415-3545	N/A	N/A
	5M	1044-1152		
.045"-1/16" 1,2-1,6mm Wire	10 ft.	SW410-116	SW410M-116	SW410X-116
	3M	1044-1155	1044-1180	1044-1165
.045"-1/16" 1,2-1,6mm Wire	12 ft.	SW412-116	SW412M-116	SW412X-116
	4M	1044-1156	1044-1181	1044-1166
.045"-1/16" 1,2-1,6mm Wire	15 ft.	SW415-116	SW415M-116	SW415X-116
	5M	1044-1157	1044-1182	1044-1167

* May require adaptor plug for some feeders

Water-Cooled MIG-Guns®



COMPACT WATER-COOLED MIG-GUNS®

380 AMP 100% duty cycle, CO₂ Gas

- Compact handle
- Eliminator Tips
- Lightweight
- Sealed front end



380 AMP

380 AMP GUN ASSEMBLIES

Wire Size	Cable Length	WCS MIG-Gun Assembly (PART NO. / STOCK NO.)		
		Tweco*	Miller	Euro-Kwik
.035-.045" 0,9-1,2mm Wire	10 ft. 3M	WCS310-3545 1030-1625	WCS310M-3545 1030-1630	XWCS310-3545 1030-1635
.035-.045" 0,9-1,2mm Wire	12 ft. 4M	WCS312-3545 1030-1626	WCS312M-3545 1030-1631	XWCS312-3545 1030-1636
.035-.045" 0,9-1,2mm Wire	15 ft. 5M	WCS315-3545 1030-1627	WCS315M-3545 1030-1632	XWCS315-3545 1030-1637

* May require adaptor plug for some feeders

STANDARD WATER-COOLED MIG-GUNS®

400 & 600 AMP 100% duty cycle, CO₂ Gas

- Lightweight, cool running
- Eliminator tips may be used
- Furnished with standard tips
- Sealed front end



400 AMP GUN ASSEMBLIES

Wire Size	Cable Length	WCS MIG-Gun Assembly (PART NO. / STOCK NO.)	
		Tweco*	Euro-Kwik
.035-.045" 0,9-1,2mm Wire	10 ft. 3M	WCS410-3545 1044-1104	N/A
.045"-1/16" 1,2-1,6mm Wire	10 ft. 3M	WCS410-116 1044-1115	XWCS410-116 1044-1614
.035-.045" 0,9-1,2mm Wire	12 ft. 4M	WCS412-3545 1044-1105	N/A
.045"-1/16" 1,2-1,6mm Wire	12 ft. 4M	WCS412-116 1044-1116	XWCS412-116 1044-1615
.035-.045" 0,9-1,2mm Wire	15 ft. 5M	WCS415-3545 1044-1106	XWCS415-3545 1044-1606
.045"-1/16" 1,2-1,6mm Wire	15 ft. 5M	WCS415-116 1044-1117	XWCS415-116 1044-1616

* May require adaptor plug for some feeders

600 AMP GUN ASSEMBLIES

Wire Size	Cable Length	WCS MIG-Gun Assembly (PART NO. / STOCK NO.)	
		Tweco*	Euro-Kwik
.035-.045" 0,9-1,2mm Wire	10 ft. 3M	WCS610-3545 1064-1104	XWCS610-3545 1064-1604
.045"-1/16" 1,2-1,6mm Wire	10 ft. 3M	WCS610-116 1064-1114	XWCS610-116 1064-1614
5/64" 2.0mm	10 ft. 3M	N/A	N/A
3/32" 2,4mm	10 ft. 3M	WCS610-332 1064-1134	N/A
.035-.045" 0,9-1,2mm Wire	12 ft. 4M	WCS612-3545 1064-1105	N/A
.045"-1/16" 1,2-1,6mm Wire	12 ft. 4M	WCS612-116 1064-1115	XWCS612-116 1064-1615
3/32" 2,4mm	12 ft. 4M	WCS612-332 1064-1135	N/A
.035-.045" 0,9-1,2mm Wire	15 ft. 5M	WCS615-3545 1064-1106	N/A
.045"-1/16" 1,2-1,6mm Wire	15 ft. 5M	WCS615-116 1064-1116	XWCS615-116 1064-1616
5/64" 2.0mm	15 ft. 5M	WCS615-564 1064-1126	N/A
3/32" 2,4mm	15 ft. 5M	WCS615-332 1064-1136	N/A
7/64" 2,8mm	15 ft. 5M	WCS615-764 1064-1146	N/A

* May require adaptor plug for some feeders

TWECO® WATER COOLERS

- Vertical or horizontal models available.
- Designed for MIG guns up to 800 amps and TIG torches up to 500 amps.
- Stainless steel construction eliminates coolant contamination due to electrolyte and chemical reactions.
- High efficiency radiator design pulls outside air through radiator.
- Stainless steel construction.
- Available with either Gear or Vane pumps.
- Vertical model has molded seamless plastic water tank; virtually eliminates leakage.
- Pump by-pass to tank on rotary gear pump - keeps pump from overheating.
- Vane pumps are equipped with a bypass to eliminate excessive pump wear.



TC 900 WATER COOLER



TCV 900 WATER COOLER

TC 900 WATER COOLER

Description	(PART NO. / STOCK NO.)
	Tweco
Cooler w/Gear Pump 110V-50/60 Hz	TC900-G 4010-1010
Cooler w/Vane Pump 110V-50/60 Hz	TC900-V 4010-1011
Cooler w/Gear Pump 230V-50/60 Hz	TC900-GX 4010-1012

TCV 900 WATER COOLER

Description	(PART NO. / STOCK NO.)
	Tweco
Cooler w/Gear Pump 110V-50/60 Hz	TCV900-G 4010-1035
Cooler w/Vane Pump 110V-50/60 Hz	TCV900-V 4010-1036

Eliminator® Spool Gun

Tweco
Professional

Tweco's 300 Amp Eliminator® Spool Gun will provide excellent service and ease of operation for your aluminum welding applications. The gun is available with 25' or 50' cable lengths.

This dynamic Spool Gun runs 300 amps at 60% duty cycle with mixed gases. The Spool Gun's wire feed range is 900 inches per minute. To ensure smooth wire feed, we've added self-centering wire guides and drive rolls for .030" (0,8mm)- 1/16" (1,6mm) wire.

Tweco's Spool Gun also features a copper "jumper" liner to assist with arc start when welding aluminum, stainless steel or mild steel.

The ESG-1 Control Box provides the gas solenoid with pre-and post-purge gas control. The Control Box also provides a run in control for arc starting.

- **Comfortable Handle Design**
- **Outer Spool Tension Control**
- **Uses Long-Life Eliminator® Consumables**
- **Quick Disconnect Conductor Tube**
- **180° Conductor Tube Standard with Optional 45° Tube which Swivels 360°**
- **180° Conductor Tubes Available in Standard 4" and Optional 6" Lengths**

300 AMP ELIMINATOR SPOOL GUN



Most of all, we think you'll like the lightweight design of the Eliminator® Spool Gun. It weighs 2.8 lbs. (just over one kilo).

- **Conductor Tube has a Copper Jumper Liner to Assist with Arc Start**
- **3-turn potentiometer for fine wire speed control**
- **Tweco's Eliminator® Spool Gun fits most welding machines with the use of our ESG-1 Control Box**

COMPLETE GUN ASSEMBLIES - 24 Volt Motors

Eliminator Spool Gun Assembly (PART NO. / STOCK NO.)	
Description	Tweco
Gun Assembly with 25' (8M) Cable	ESG225-3545 1027-1360
Gun Assembly with 50' (15M) Cable	ESG250-3545 1027-1361

* Requires ESG-1 Control Box



Control Box

- **Pre-Purge Gas Control**
- **Post-Purge Gas Control**
- **Run-in Control**

CONTROL BOX - Used to connect Spool Gun to most welding machines

Eliminator Control Box (PART NO. / STOCK NO.)	
Description	Tweco
Control Box	ESG -1 1028-1295

Eliminator® Pull Gun



Tweco's new 300 Amp Eliminator® Pull Gun is available with 15', 25' or 50' cable lengths.

The Pull Gun runs 300 amps at 60% duty cycle with mixed gases with a wire feed range of 900 inches per minute. To ensure smooth wire feed, we've added self-centering wire guides and drive rolls for .030" (0,8mm)- 1/16" (1,6mm) wire. The Eliminator® Pull Gun utilizes feeder speed control.

Teflon conduits are standard with the Pull Gun to enhance the quality of your welds. We've provided repairable cable connections and spring Cablehoz® support to extend the life of your Pull Gun and keep your maintenance down.



300 AMP ELIMINATOR PULL GUN

Most of all, we think you'll like the lightweight design of the Eliminator® Pull Gun. It weighs 2.32 lbs.

- **Comfortable Handle Design**
- **Uses Long-Life Eliminator® Consumables**
- **Quick Disconnect Conductor Tube**
- **180° Conductor Tube Standard with Optional 45° Tube which Swivels 360°**
- **180° Conductor Tubes Available in 4" and 6" Lengths**

- **Conductor Tube has a Copper Jumper Liner to Assist with Arc Start**
- **Tweco's Eliminator® Pull Gun fits most welding machines with the use of our EPG-CR1 or EPG-CR2 control box**

COMPLETE GUN ASSEMBLIES With 24 Volt Motors

Description	Eliminator Pull Gun (PART NO. / STOCK NO.)	
	Tweco*	Euro-Kwik
Gun Assembly with 15' (5M) Cable	EPG215T-3545 1027-1320	N/A
Gun Assembly with 25' (8M) Cable	EPG225T-3545 1027-1321	EPG225X-3545 1027-1346
Gun Assembly with 50' (15M) Cable	EPG250T-3545 1027-1323	EPG250X-3545 1027-1348

* Requires EPG-CR1 or EPG-CR2 Control Box

NOTE: Gun Assemblies with Tweco rear connections are shipped with a Miller® and Lincoln® plug.

CONTROL BOX - Used to connect Pull Gun to most welding machines

Description	Eliminator Control Box (PART NO. / STOCK NO.)	
	Tweco	
Control Box with Pre & Post Purge Gas Control	EPG-CR2 1028-1291	

Control Box



EPG-CR2

**AIR-COOLED SMOKE MASTER®
MIG GUNS**

**250 & 450 AMP
60% duty cycle, CO₂ Gas**

- Efficiently removes up to 90% of smoke from the welding zone.
- Features Tweco Eliminator® style consumable parts.
- Tough outer jacket made of full length leather for increased flexibility and enhanced cable life.
- Cleaner, more efficient smoke removal.



250 AMP

250 AMP GUN ASSEMBLIES

Wire Size	Cable Length	Complete 250 AMP MIG-Guns (PART NO. / STOCK NO.)	
		Tweco*	Miller
.040-.045" 1,0-1,2mm	10 ft.	S210-4045	S210M-4045
	3M	1026-1100	1026-1105
.040-.045" 1,0-1,2mm	12 ft.	S212-4045	S212M-4045
	4M	1026-1101	1026-1106
.040-.045" 1,0-1,2mm	15 ft.	S215-4045	S215M-4045
	5M	1026-1102	1026-1107

450 AMP GUN ASSEMBLIES

Wire Size	Cable Length	Complete 450 AMP MIG-Guns (PART NO. / STOCK NO.)		
		Tweco*	Miller	Lincoln†
.045"-1/16" 1,2-1,6mm Wire	12 ft.	S412-116	S412M-116	N/A
	4M	1046-1105	1046-1125	
.045"-1/16" 1,2-1,6mm Wire	15 ft.	S415-116	S415M-116	S415L-116
	5M	1046-1108	1046-1128	1046-1138

* May require adapter plug for some feeders

† Fits Lincoln LN 7, 8, 9

**TWECO SMOKE MASTER®
Fume Removal System**

- Compatible with Tweco Smoke Master® MIG Guns.
- Efficiently removes welding fumes.
- High efficiency filter.
- Separately air-cooled motor.
- Automatic start-stop function standard.



Description	(PART NO. / STOCK NO.)
	Tweco
120V, 60Hz	TSC-96 4500-1010

Fluxcored MIG Guns



FLUXCORED MIG GUNS

350 & 450 Amp 60% Duty Cycle

- For use with all gasless wires.
- Replaceable conduit and four trigger lead wires.
- Standard consumables, interchangeable with other leading flux-cored guns.



350 AMP

350 AMP ASSEMBLIES - 3/32" (2,4MM) WIRE MAXIMUM

350 AMP Rear Connection Style (PART NO. / STOCK NO.)			
Wire Size	Tweco*	Miller	Lincoln†
10 ft. 3M	SEFC350T-10 1031-1642	SEFC350M-10 1031-1637	SEFC350-10 1031-1632
15 ft. 5M	SEFC350T-15 1031-1643	SEFC350M-15 1031-1638	SEFC350-15 1031-1633

450 AMP ASSEMBLIES - 1/8" (3,2MM) WIRE MAXIMUM

450 AMP Rear Connection Style (PART NO. / STOCK NO.)			
Wire Size	Tweco*	Miller	Lincoln†
10 ft. 3M	SEFC450T-10 1041-1119	SEFC450M-10 1041-1138	SEFC450-10 1041-1112
15 ft. 5M	SEFC450T-15 1041-1120	SEFC450M-15 1041-1139	SEFC450-15 1041-1113

* May require adapter plug for some feeders

† Fits Lincoln LN 7, 8, 9

CONSUMABLE PARTS

Contact Tip	Electrode Size						
	.045 (1,2MM)	.068 (1,72MM)	5/64 (2,0MM)	3/32 (2,4MM)	7/64 (2,8MM)	1/8 (3,2MM)	
350 Amp	14FC-045 1140-1125	14FC-068 1140-1126	14FC-564 1140-1127	14FC-332 1140-1128	N/A	N/A	
450 Amp	N/A	N/A	16FC-564 1160-1125	16FC-332 1160-1126	16FC-764 1160-1127	16FC-120 1160-1128	
Nozzle	Nozzle Size			Thread Protector			
	3/4" (19MM)	1-1/2" (38MM)					
350 Amp	24FC-150 1241-1027	24FC-275 1241-1026		24FC-P 1241-1025			
450 Amp	26FC-150 1261-1026	26FC-275 1261-1027		26FC-P 1261-1025			
	Conductor Tubes						
	45°			60°			
350 Amp	64FC-45 1641-1126			64FC-60 1641-1127			
450 Amp	66FC-45 1661-1126			66FC-60 1661-1127			
	Conduit						
	10 Ft (3MM)			15 Ft (5M)			
	350 Amp 5/64-3/32 (2,0-2,4 mm) Wire	43FC-332-10 1440-1030			43FC-332-15 1440-1031		
	450 Amp 5/64-3/32 (2,0-2,4 mm) Wire	—			44FC-332-15 1440-1034		
450 Amp 7/64-1/8 (2,8-3,2 mm) Wire	44FC-18-10 1440-1035			44FC-18-15 1440-1036			

**PROFESSIONAL'S CHOICE
MIG OUTFITS**

Now everything a welder needs to get started is included in Tweco's *Professional's Choice* MIG Outfits. Just connect to your welding machine and you're ready to weld! Outfits available in both our Eliminator style MIG guns and Traditional style MIG guns. Each gun style is available in either 200 or 400 amp models.



400 Amp Outfits include the following:

- Either a Compact Eliminator or Traditional 400 amp 15' (5M) MIG gun
- Flowmeter with 10' (3M) hose
- 15' (5M) 3/0 Weld Cable with SGC-300 Ground Clamp
- 7 oz. (207ml) Protex® Extra coolant
- # 2 Weldskill Male Dinse Connector
- An extra liner, 44-116-15
- A starter kit of extra contact tips, diffuser and nozzle

200/250 Amp Outfits include the following:

- Either an Eliminator 250 amp 15' (5M) MIG gun or Traditional 200 amp 15' (5M) MIG gun
- Flowmeter with 10' (3M) hose
- 15' (5M) 1/0 Weld Cable with SGC-300 Ground Clamp
- 7 oz. (207ml) Protex® Extra coolant
- # 2 Weldskill Male Dinse Connector
- A starter kit of extra contact tips, diffuser and nozzle

PROFESSIONAL CHOICE MIG OUTFITS

Description	Professional MIG Outfits (PART NO. / STOCK NO.)
	Tweco
Compact Eliminator MIG Outfit with ELC215M-4045 Gun	SKELC215M-4045 1028-1386
Compact Eliminator MIG Outfit with ELC215-4045 Gun	SKELC215-4045 1028-1385
Compact Eliminator MIG Outfit with ELC415M-3545 Gun	SKELC415M-3545 1048-1396
Compact Eliminator MIG Outfit with ELC415-3545 Gun	SKELC415-3545 1048-1395
Traditional MIG Outfit with M215-4045 Gun	SKM215-4045 1020-1336
Traditional MIG Outfit with 215-4045 Gun	SK215-4045 1020-1335
Traditional MIG Outfit with M415-3545	SKM415-3545 1040-1086
Traditional MIG Outfit with 415-3545	SK415-3545 1040-1085

Mini-MIG-Gun Hobby Kits



MINI-MIG GUN HOBBY KITS

10 ft. (3M) 160 Amp Air-Cooled Mini-MIG Gun kits with rear connections for use with 100-180 amp hobby type welding machines.

- Neoprene conductor tubes
- Strain relief and cable support
- Includes rear connection plug for 100 to 180 amp welding machines



MINI-MIG HOBBY KITS

Description	Mini-MIG Kits (PART NO. / STOCK NO.)
	Tweco
.023"/0,6mm Wire 10 ft./3M with Thermal Arc® Fabricator® 130-170 Rear Connection, Hobart Handler	HB23F-10 1000-1105
.023"/0,6mm Wire 10 ft./3M with Lincoln® Rear Connection SP100-SP250 & 255, FAB, & Tweco Adaptors	HB23L-10 1000-1102
.023"/0,6mm Wire 10 ft./3M with Miller® Rear Connection	HB23M-10 1000-1103
.035"/0,9mm Wire 10 ft./3M with Thermal Arc® Fabricator® 130-170 Rear Connection, Hobart Handler	HB35F-10 1000-1106
.035"/0,9mm Wire 10 ft./3M with Lincoln® Rear Connection SP100-SP250 & 255, FAB, & Tweco Adaptors	HB35L-10 1000-1100
.035"/0,9mm Wire 10 ft./3M with Miller® Rear Connection	HB35M-10 1000-1101
.035"/0,9mm Wire 6 ft./2M with Century Rear Connection	HB35C-6 1000-1110
.035"/0,9mm Wire 10 ft./3M with Century Rear Connection	HB35C-10 1000-1111
.035"/0,9mm Wire 10 ft./3M with Firepower® 130 Amp Connection	HB35FP-10 1000-1115

TOP GUN MIG KITS

Rugged, Lightweight Guns

We've packaged two of our hottest selling 15' (5M) MIG guns with the following accessories at no extra charge to you.

- Tweco®, Miller® and Lincoln® style rear plugs and control wires
- 44-116-15 Conduit
- Three heavy duty 16S contact tips: 16S-35, 16S-45, 16S-116
- Heavy-duty diffuser: HD54-16
- Heavy-duty nozzle: HD24-62

These lightweight guns are guaranteed to hold up in rugged work environments. The heavy duty consumables will give you the performance you need and will last longer than the lightweight consumables.



TMK-300HD



TMK-350TLHD

TOP GUN MIG KITS

Description	Top Gun MIG Kits (PART NO. / STOCK NO.)
	Tweco
Professional's Choice 200 Amp MIG Gun Kit with 215-116 Gun	TMK-200HD 1020-1126
Professional's Choice 300 Amp MIG Gun Kit with 315-116 Gun	TMK-300HD 1030-1126
Tuff-N-Lite 350 Amp MIG Gun Kit with TL350-15-116 Gun	TMK-350TLHD 1036-1026
400 Amp Supra XT MIG Gun Kit with SEHD 4005M16 Gun	TMK-400SEHD 1040-1026

MIG Welding Consumables



ELIMINATOR® STYLE CONTACT TIPS



EL16T-35



EL16-35



EL16-45



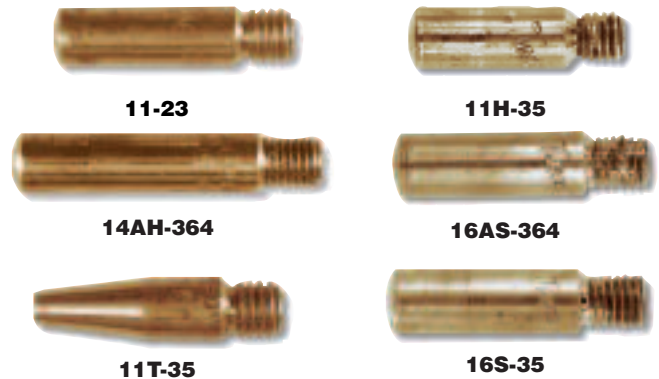
EL16RS-45

Wire Size In./Metric	Tip I.D. In./Metric	Eliminator Style (PART NO. / STOCK NO.)	
		Tapered	Standard
.023" 0,6mm	.031" 0,79mm	EL16T-23 1160-1600	N/A
.030" 0,8mm	.038" 0,97mm	EL16T-30 1160-1601	EL16-30 1160-1610
.035" 0,9mm	.044" 1,12mm	EL16T-35 1160-1602	EL16-35 1160-1611
.040" 1,0mm	.048" 1,22mm	EL16T-40 1160-1603	EL16-40 1160-1612
.045" 1,2mm	.054" 1,37mm	EL16T-45 1160-1604	EL16-45 1160-1613
.052" 1,3mm	.064" 1,65mm	EL16T-52 1160-1605	EL16-52 1160-1615
1/16" 1,6mm	.073" 1,85mm	EL16T-116 1160-1606	EL16-116 1160-1616
5/64" 2,0mm	.090" 2,29mm	N/A	EL16-564 1160-1618
3/32" 2,4mm	.106" 2,67mm	N/A	EL16-332 1160-1619
7/64" 2,8mm	.120" 3,05mm	N/A	EL16-764 1160-1620
1/8" 3,2mm	.144" 3,66mm	N/A	EL16-18 1160-1621
3/64"AL 1,2mm	.059" 1,50mm	EL16AT-364 1160-1607	EL16A-364 1160-1614
1/16"AL 1,6mm	.082" 2,08mm	N/A	EL16A-116 1160-1617

Wire Size In./Metric	Tip I.D. In./Metric	Eliminator Style (PART NO. / STOCK NO.)	
		Tapered	Standard
.023" 0,6mm	.031" 0,79mm	EL11-23 1140-1175	
.035" 0,9mm	.041" 1,04mm	EL11-30 1140-1176	
.040" 1,0mm	.046" 1,16mm	EL11-35 1140-1177	
.045" 1,2mm	.051" 1,29mm	EL11-40 1140-1178	
.045" 1,2mm	.054" 1,37mm	EL11-45 1140-1179	

RS Series Copper / Silver Eliminator Contact Tips					
EL16 Series Wire Size In./Metric	Tip I.D. In./Metric	Part No. Stock No	FL16 Series Wire Size In./Metric	Tip I.D. +/- .002"	Part No. Stock No
.035" 0,9mm	.041" 1,04mm	EL16RS-35 1160-1740	.035" 0,9mm	.041" 1,04mm	EL16RST-35 1160-1712
.040" 1,0mm	.046" 1,16mm	EL16RS-40 1160-1741	.040" 1,0mm	.046" 1,16mm	EL16RST-40 1160-1713
.045" 1,2mm	.051" 1,29mm	EL16RS-45 1160-1742	.045" 1,2mm	.051" 1,29mm	EL16RST-45 1160-1714
.045" 1,2mm	.054" 1,37mm	EL16RS-45C 1160-1745	.045" 1,2mm	.054" 1,37mm	EL16RST-45C 1160-1717
.052" 1,3mm	.058" 1,47mm	EL16RS-52 1160-1743	.052" 1,3mm	.058" 1,47mm	EL16RST-52 1160-1715
1/16" 1,6mm	.073" 1,85mm	EL16RS-116 1160-1744	1/16" 1,6mm	.073" 1,85mm	EL16RST-116 1160-1716
1/16" 1,6mm	.068" 1,72mm	EL16RS-116-68 1160-1746	1/16" 1,6mm	.068" 1,72mm	EL16RST-116-68 1160-1718

**STANDARD CONTACT TIPS
FOR TRADITIONAL AND
SPRAY MASTER™ GUNS
STANDARD, TAPERED,
& HEAVY DUTY STYLES**



STANDARD TIPS FOR TRADITIONAL AND SPRAY MASTER™ GUNS

		(PART NO. / STOCK NO.)									
Wire Size In./Metric	Tip I.D. In./Metric	MS250, Mini, & No. 1			No. 2, 3, & 4			No. 5		MS350/450 & No. 6	
		Standard	Optional Heavy Duty	Optional Tapered	Standard	Optional Heavy Duty	Optional Tapered	Standard Recess	Optional 3/8" Recess	Standard HD Tip	Optional Tapered
.023" 0,6mm	.031" 0,79mm	11-23 1110-1100	N/A	11T-23 1110-1300	14-23 1140-1100	N/A	14T-23 1140-1300	N/A	N/A	N/A	N/A
.030" 0,8mm	.038" 0,97mm	11-30 1110-1101	11H-30 1110-1201	11T-30 1110-1301	14-30 1140-1101	N/A	14T-30 1140-1301	N/A	N/A	N/A	N/A
.035" 0,9mm	.044" 1,12mm	11-35 1110-1102	11H-35 1110-1202	11T-35 1110-1302	14-35 1140-1102	14H-35 1140-1202	14T-35 1140-1302	15H-35 1150-1202	N/A	16S-35 1160-1102	16ST-35 1160-1135
.040" 1,0mm	.048" 1,22mm	11-40 1110-1103	11H-40 1110-1203	11T-40 1110-1303	14-40 1140-1103	14H-40 1140-1203	14T-40 1140-1303	N/A	N/A	16S-40 1160-1103	16ST-40 1160-1136
.045" 1,2mm	.054" 1,37mm	11-45 1110-1104	11H-45 1110-1204	11T-45 1110-1304	14-45 1140-1104	14H-45 1140-1204	14T-45 1140-1304	15H-45 1150-1204	15HFC-45 1150-1254	16S-45 1160-1104	16ST-45 1160-1137
.052" 1,3mm	.064" 1,65mm	N/A	N/A	N/A	14-52 1140-1105	14H-52 1140-1205	14T-52 1140-1305	15H-52 1150-1205	15HFC-52 1150-1255	16S-52 1160-1105	16ST-52 1160-1138
1/16" 1,6mm	.073" 1,85mm	N/A	N/A	N/A	14-116 1140-1106	14H-116 1140-1206	14T-116 1140-1306	15H-116 1150-1206	15HFC-116 1150-1256	16S-116 1160-1106	16ST-116 1130-1139
5/64" 2,0mm	.090" 2,29mm	N/A	N/A	N/A	14-564 1140-1109	14H-564 1140-1209	N/A	15H-564 1150-1209	15HFC-564 1150-1259	16S-564 1160-1109	N/A
3/32" 2,4mm	.106" 2,67mm	N/A	N/A	N/A	N/A	N/A	N/A	15H-332 1150-1210	15HFC-332 1150-1260	16S-332 1160-1110	N/A
7/64" 2,8mm	.120" 3,05mm	N/A	N/A	N/A	N/A	N/A	N/A	15H-764 1150-1211	15HFC-764 1150-1261	16S-764 1160-1111	N/A
1/8" 3,2mm	.144" 3,66mm	N/A	N/A	N/A	N/A	N/A	N/A	15H-18 1150-1212	15HFC-18 1150-1262	16S-18 1160-1112	N/A
3/64"AL 1,2mm	.059" 1,50mm	N/A	11AH-364 1110-1213	N/A	14A-364 1140-1113	14AH-364 1140-1213	N/A	15AH-364 1150-1213	N/A	16AS-364 1160-1113	N/A
1/16"AL 1,6mm	.082" 2,08mm	N/A	N/A	N/A	N/A	14AH-116 1140-1214	N/A	15AH-116 1150-1214	N/A	16AS-116 1160-1114	N/A

N/A = NOT AVAILABLE ** 16S Tips, When used in No. 5 Mig-Guns require a 55S style diffuser. See (Diffusers) page 41.
Use 55S-SWL or 55S-HL for 5/32" tip recess. Use 55S-SW or 55S-H for 3/8" tip recess. For tip requirements not shown call Customer Service

**COPPER-SILVER
TWECO ROBOTICS
"RS" SERIES TIPS**



RS SERIES COPPER / SILVER CONTACT TIPS

		(PART NO. / STOCK NO.)					
Wire Size In./Metric	Tip I.D. In./Metric	11 Series		14 Series		16 Series	
		Standard	Optional Tapered	Standard	Optional Tapered	Standard Recess	Optional Tapered
.035" 0,9mm	.041" 1,04mm	11RS-35 1110-1225	N/A	14RS-35 1140-1475	14RST-35 1140-1482	16RS-35 1160-1468	16RST-35 1160-1475
.040" 1,0mm	.046" 1,16mm	N/A	N/A	14RS-40 1140-1476	14RST-40 1140-1483	16RS-40 1160-1469	16RST-40 1160-1476
.045" 1,2mm	.051" 1,29mm	11RS-45 1110-1226	N/A	14RS-45 1140-1477	14RST-45 1140-1484	16RS-45 1160-1470	16RST-45 1160-1477
.045" 1,2mm	.054" 1,37mm	N/A	N/A	14RS-45C 1140-1480	14RST-45C 1140-1487	16RS-45C 1160-1473	16RST-45C 1160-1480
.052" 1,3mm	.058" 1,47mm	N/A	N/A	14RS-52 1140-1478	14RST-52 1140-1485	16RS-52 1160-1471	16RST-52 1160-1478
1/16" 1,6mm	.073" 1,85mm	N/A	N/A	14RS-116 1140-1479	14RST-116 1140-1486	16RS-116 1160-1472	16RST-116 1160-1479
1/16" 1,6mm	.068" 1,72mm	N/A	N/A	14RS-116-68 1140-1481	14RST-116-68 1140-1488	16RS-116-68 1160-1474	16RST-116-68 1160-1481

N/A = NOT AVAILABLE. For tip requirements not shown call Customer Service

**CHROME ZIRCONIUM
COPPER "RZ"
CONTACT TIPS**



14RZ-45



16RZT-45

RZ SERIES CHROME ZIRCONIUM CONTACT TIPS

		(PART NO. / STOCK NO.)			
Wire Size In./Metric	Tip I.D. In./Metric	14 Series		16 Series	
		Standard	Optional Tapered	Standard	Optional Tapered
.035" 0,9mm	.041" 1,04mm	14RZ-35 1140-1430	14RZT-35 1140-1440	16RZ-35 1160-1180	16RZT-35 1160-1190
.045" 1,2mm	.051" 1,29mm	14RZ-45 1140-1432	14RZT-45 1140-1442	16RZ-45 1160-1182	16RZT-45 1160-1192
.052" 1,3mm	.058" 1,47mm	14RZ-52 1140-1433	14RZT-52 1140-1443	16RZ-52 1160-1183	16RZT-52 1160-1193

N/A = NOT AVAILABLE. For tip requirements not shown call Customer Service

ELIMINATOR® STYLE NOZZLES & NOZZLE INSULATORS



EL22CT

EL21-50

Gun Model	Nozzle Style	Fits Diffuser	3/8"/9,5MM Bore	1/2"/12,7MM Bore	5/8"/15,9MM Bore	3/4"/19,1MM Bore
EL21 SERIES NOZZLES (PART NO. / STOCK NO.)						
Mini (STANDARD)	CT Type Tip Flush	EL50	N/A	EL21-50F 1230-1031	N/A	N/A
No. 1 (STANDARD)	CT Type 1/8" / 3,2mm Tip Recess	EL51	EL21-37 1230-1025	EL21-50 1230-1026	EL21-62 1230-1027	N/A
EL22 SERIES NOZZLES (PART NO. / STOCK NO.)						
Slip-On Type	1/8" / 3,2mm Tip Recess	EL52	EL22I-37 1260-1601	EL22I-50 1260-1602	EL22I-62 1260-1603	EL22I-75 1260-1604
	Tip Flush	EL52	N/A	EL22I-50F 1260-1612	EL22I-62F 1260-1613	N/A
	Tip Protruded	EL52	N/A	EL22I-50P 1260-1686	EL22I-62P 1260-1687	N/A
Coarse Threaded	1/8" / 3,2mm Tip Recess	EL52CT	EL22CT-37 1260-1625	EL22CT-50 1260-1626	EL22CT-62 1260-1627	EL22CT-75 1260-1628
	Tip Flush	EL52CT	EL22CT-37F 1260-1635	EL22CT-50F 1260-1636	EL22CT-62F 1260-1637	
	Tip Protruded	EL52CT	N/A	EL22CT-50P 1260-1691	EL22CT-62P 1260-1692	N/A
	Heavy Duty Tip	EL52CT	N/A	N/A	EL22CT-62H 1260-1629	N/A
EL24 SERIES NOZZLES (PART NO. / STOCK NO.)						
Slip-On Type	1/8" / 3,2mm Tip Recess	EL54-SW EL54-H	EL24I-37 1260-1606	EL24I-50 1260-1607	EL24I-62 1260-1608	EL24I-75 1260-1609
	Tip Flush	EL54-SW EL54-H			EL24I-62F 1260-1618	
	1/4" / 6,4mm Tip Recess	EL54-SW EL54-H	EL24I-37R 1260-1675	EL24I-50R 1260-1676	EL24I-62R 1260-1677	EL24I-75R 1260-1678
	Heavy Duty 1/8" / 3,2mm Tip Recess	EL54-SW EL54-H	N/A	N/A	EL24I-62H 1260-1631	EL24I-75H 1260-1632
	Heavy Duty Tip Flush	EL54-SW EL54-H	N/A	N/A	EL24I-62HF 1260-1641	
Coarse Threaded	1/8" / 3,2mm Tip Recess	EL54CT-SW EL54CT-H	EL24CT-37 1260-1650	EL24CT-50 1260-1651	EL24CT-62 1260-1652	EL24CT-75 1260-1653
	Tip Flush	EL54CT-SW EL54CT-H	EL24CT-37F 1260-1665	EL24CT-50F 1260-1666	EL24CT-62F 1260-1667	
	Tip Protruded	EL54CT-SW EL54CT-H	N/A	EL24CT-50P 1260-1701	EL24CT-62P 1260-1702	N/A
	1/4" / 6,4mm Tip Recess	EL54CT-SW EL54CT-H			EL24CT-62R 1260-1682	
	Heavy Duty 1/8" / 3,2mm Tip Recess	EL54CT-SW EL54CT-H	N/A	N/A	EL24CT-62H 1260-1657	EL24CT-75H 1260-1658
EL26 SERIES NOZZLES				5/8"/15,9MM Bore	3/4"/19,1MM Bore	7/8"/22MM Bore
Coarse Threaded	Self insulated 3/16" / 4,8mm Tip Recess	EL54CT-SW EL54CT-H	N/A	EL26CT-62 1260-1730	EL26CT-75 1260-1731	

OPTIONAL NOZZLES & INSULATORS



EL241-75FAS

Gun Model	Nozzle Style	Insulator	Fits Diffuser	3/8"/9,5MM Bore	1/2"/12,7MM Bore	5/8"/15,9MM Bore	3/4"/19,1MM Bore
ARC SPOT NOZZLES				(PART NO. / STOCK NO.)			
400 Amp MIG Guns	Flat Arc Spot	N/A	EL54-SW EL54-H	N/A	N/A	N/A	EL241-75FAS 1260-1610
COARSE THREAD NOZZLE AND INSULATOR				(PART NO. / STOCK NO.)			
24CT SERIES		Insulator					
450 Amp MIG Guns	1/8" / 3,2mm Tip Recess	EL34CT 1340-1430	EL54CT-SW EL54CT-H	24CT-37-S 1240-1404	24CT-50-S 1240-1414	24CT-62-S 1240-1424	24CT-75-S 1240-1434
	Tip Flush	EL34CT 1340-1430	N/A	N/A	24CT-50-F 1240-1412	24CT-62-F 1240-1422	N/A
	1/2" / 12,7mm Tip Recess	EL34CT 1340-1430	N/A	N/A	N/A	24CT-62-R 1240-1423	24CT-75-R 1240-1433
26CT SERIES		Insulator					
600 Amp MIG Guns	1/8" / 3,2mm Tip Recess	EL36CT 1360-1405	EL54CT-SW EL54CT-H	N/A	N/A	26CT-62 1260-1420	26CT-75 1260-1430

HEAVY DUTY STYLE NOZZLES

FOR USE ON SPRAY MASTER™ STYLE GUNS

Gun Model	Nozzle Style	Fits Diffuser	3/8"/9,5MM Bore	1/2"/12,7MM Bore	5/8"/15,9MM Bore	3/4"/19,1MM Bore
HD22 SERIES NOZZLES			(PART NO. / STOCK NO.)			
Slip-On Type	1/8" / 3,2mm Tip Recess	HD52-11	HD22-37 1220-1305	HD22-50 1220-1306	HD22-62 1220-1307	N/A
	Tip Flush	HD52-11	HD22-37F 1220-1310	HD22-50F 1220-1311	HD22-62F 1220-1312	N/A
HD24 SERIES NOZZLES			(PART NO. / STOCK NO.)			
Slip-On Type	1/8" / 3,2mm Tip Recess	HD54-16	N/A	HD24L-50 1240-1200	HD24L-62 1240-1201	HD24L-75 1240-1202
	Tip Flush	HD54-16	N/A	HD24L-50F 1240-1204	HD24L-62F 1240-1205	HD24L-75F 1240-1206
	Heavy Duty 1/8" / 3,2mm Tip Recess	HD54-16	N/A	HD24-50 1240-1240	HD24-62 1240-1241	HD24-75 1240-1242
	Heavy Duty Tip Flush	HD54-16	N/A	HD24-50F 1240-1235	HD24-62F 1240-1236	HD24-75F 1240-1237
	Heavy Duty Tip Protruded	HD54-16	N/A	HD24-50P 1240-1235	HD24-62P 1240-1236	HD24-75P 1240-1247

HD24 nozzles may be used on No. 3 & No. 4 guns by using HD54-16 diffuser

**HEAVY DUTY
BRASS NOZZLES**

Gun Model	Nozzle Style	Fits Diffuser	1/2"/12,7MM Bore	1/2"/12,7MM Bore	5/8"/15,9MM Bore	3/4"/19,1MM Bore
250 & 300 Amp	1/8" / 3,2mm Tip Recess	HD52 Series	HD22B-37 1220-1215	HD22B-50 1220-1216	HD22B-62 1220-1217	N/A
	Tip Flush		HD22B-37F 1220-1220	HD22B-50F 1220-1221	N/A	N/A
250 & 300 Amp	1/8" / 3,2mm Tip Recess	EL52CT Series	EL22CTB-37 1260-1565	EL22CTB-50 1260-1566	EL22CTB-62 1260-1567	N/A
	Tip Flush		N/A	EL22CTB-50F 1260-1571	EL22CTB-62F 1260-1572	N/A
400 Amp	1/8" / 3,2mm Tip Recess	HD54 Series	N/A	HD24LB-50 1240-1215	HD24LB-62 1240-1216	HD24LB-75 1240-1217
	Tip Flush		N/A	HD24LB-50F 1240-1218	HD24LB-62F 1240-1219	N/A
400 Amp	1/8" / 3,2mm Tip Recess	HD54 Series	N/A	N/A	HD26B-62 1260-1285	HD26B-75 1260-1286

STANDARD NOZZLES & NOZZLE INSULATORS FOR TRADITIONAL STYLE GUNS



Gun Model	Nozzle Style	Insulator	3/8"/9,5MM Bore	1/2"/12,7MM Bore	5/8"/15,9MM Bore	3/4"/19,1MM Bore
21 SERIES			(PART NO. / STOCK NO.)			
Mini-Mig-Gun	Self-Insulated Tip Flush	N/A	21-37-F 1210-1102	21-50-F 1210-1112	21-62-F 1210-1122	N/A
No. 1 Gun	Self-Insulated 1/8" / 3,2mm Tip Recess	N/A	21-37 1210-1100	21-50 1210-1110	21-62 1210-1120	N/A
	Tapered Self-Insulated 1/8" / 3,2mm Tip Recess	N/A	21T-37 1210-1300	N/A	N/A	N/A
	Tip Flush	N/A	21T-37-F 1210-1302	N/A	N/A	N/A
22 SERIES			(PART NO. / STOCK NO.)			
No.2 Gun	Adjustable Recess to Projection	32 1320-1100	N/A	22-50 1220-1110	22-62 1220-1120	N/A
	Short-Stop 1/8" / 3,2mm Tip Recess	32 1320-1100	22-37-SS 1220-1101	22-50-SS 1220-1111	22-62-SS 1220-1121	N/A
	Tapered Tip Flush	32 1320-1100	22T-37-SS 1220-1301	N/A	N/A	N/A
23 SERIES			(PART NO. / STOCK NO.)			
No. 3 Gun (Self-Insulated)	1/8" / 3,2mm Tip Recess	N/A	23-37 1230-1100	23-50 1230-1110	23-62 1230-1120	23-75 1230-1130
	Tip Flush	N/A	23-37-F 1230-1102	23-50-F 1230-1112	23-62-F 1230-1122	23-75-F 1230-1132
	Heavy Duty Self-Insulated 1/8" / 3,2mm Tip Recess	N/A	N/A	23H-50 1230-1210	23H-62 1230-1220	23H-75 1230-1230
	Heavy Duty Tip Flush	N/A	N/A	N/A	23H-62-F 1230-1222	N/A

Use genuine Tweco parts and consumables to protect the quality of your welds and the life of your gun!

**STANDARD NOZZLES
& NOZZLE INSULATORS
FOR TRADITIONAL
STYLE GUNS**



24A-62-SS



24A-50



24AH-62



24AT-37-SS



24CT-62-F



25I-75

Gun Model	Nozzle Style	Insulator	3/8"/9,5MM Bore	1/2"/12,7MM Bore	5/8"/15,9MM Bore	3/4"/19,1MM Bore
24 SERIES (PART NO. / STOCK NO.)						
No. 4 Gun	Adjustable Recess to Projection	34A 1340-1100	N/A	24A-50 1240-1110	24A-62 1240-1120	24A-75 1240-1130
	Short Stop 1/8" / 3,2mm Tip Recess	34A 1340-1100	24A-37-SS 1240-1101	24A-50-SS 1240-1111	24A-62-SS 1240-1121	24A-75-SS 1240-1131
	SS Tapered 1/8" / 3,2mm Tip Recess	34A 1340-1100	24AT-37-SS 1240-1301	N/A	N/A	N/A
	Heavy Duty Adjustable	34A 1340-1100	N/A	24AH-50 1240-1210	24AH-62 1240-1220	24AH-75 1240-1230
	Heavy Duty Short Stop	34A 1340-1100	N/A	24AH-50-SS 1240-1211	24AH-62-SS 1240-1221	24AH-75-SS 1240-1231
	Coarse Thread 1/8" / 3,2mm Tip Recess	34CT 1340-1400	24CT-37-S 1240-1404	24CT-50-S 1240-1414	24CT-62-S 1240-1424	24CT-75-S 1240-1434
	Coarse Thread Tip Flush	34CT 1340-1400	N/A	24CT-50-F 1240-1412	24CT-62-F 1240-1422	N/A
	Coarse Thread 1/2" / 12,7mm Tip Recess	34CT 1340-1400	N/A	N/A	24CT-62-R 1240-1423	24CT-75-R 1240-1433
25 SERIES (PART NO. / STOCK NO.)						
No. 5 Gun	Coarse Thread 1/8" / 3,2mm Tip Recess	35CT 1350-1400	N/A	25CT-50 1250-1410	25CT-62 1250-1420	25CT-75 1250-1430
					25CT-62-F 1250-1421	25CT-75-F 1250-1431
	Self-Insulated 1/8" / 3,2mm Tip Recess	N/A	N/A	N/A	25I-62 1250-1120	25I-75 1250-1130
26 SERIES (PART NO. / STOCK NO.)						
Gun Model	Nozzle Style	Insulator	3/8"/9,5MM Bore	5/8"/15,9MM Bore	3/4"/19,1MM Bore	7/8"/22MM Bore
No. 6 Gun	Self-Insulated 1/8" / 3,2mm Tip Recess	N/A	N/A	26I-62 1260-1120	26I-75 1260-1130	26I-87 1260-1140
	Coarse Thread 1/8" / 3,2mm Tip Recess	36CT 1360-1400	N/A	26CT-62 1260-1420	26CT-75 1260-1430	N/A

**OPTIONAL ARC
SPOT - NOZZLES
FOR TRADITIONAL
STYLE GUNS**



25CT-125-FAS



21-62-FAS

TRADITIONAL GUNS	MINI & NO. 1 150 AMP	NO. 2 250 AMP	NO. 3	NO.4 400 AMP	NO.5 500 AMP
Flat Arc Spot	21-62-FAS 1210-1520 (5/8" Bore)	22-62-FAS 1220-1520 (5/8" Bore)	23-75-FAS 1230-1530 (3/4" Bore)	24A-62-FAS 1240-1520 (5/8" Bore)	25CT-125-FAS 1250-1560 (1-1/4" Bore)
				24A-75-FAS 1240-1530 (3/4" Bore)	25CT-162-FAS 1250-1570 (1-5/8" Bore)
				24A-100-FAS 1240-1550 (1" Bore)	

**WATER-COOLED
MIG GUN NOZZLES**

MIG GUN NOZZLES

Gun Model	Nozzle Style	Spatter Shield	Uses Diffuser	1/2"/12,7MM Bore	5/8"/15,9MM Bore	3/4"/19,1MM Bore
380 & 400 AMP EL Series Tips	1/8" / 3,2mm Tip Recess	WC23-1 1230-1084	WC53-EL	WC23-50 1230-1075	WC23-62 1230-1076	WC23-75 1230-1077
	Tip Flush			WC23-50F 1230-1080	WC23-62F 1230-1081	WC23-75F 1230-1082
380 & 400 AMP 14/14H Series Tips	1/8" / 3,2mm Tip Recess	WC24-1 1244-1009	WC54A	WC24-50 1244-1110	WC24-62 1244-1120	WC24-75 1244-1130
	Tip Flush			WC24-50F 1244-1112	WC24-62F 1244-1122	WC24-75F 1244-1132
600 AMP 16S Series Tips	1/8" / 3,2mm Tip Recess	WC26-1 1264-1009	WC56A-SW WC56A-H	N/A	WC26-62 1264-1120	WC26-75 1264-1130
	Tip Flush			N/A	WC26-62F 1264-1122	WC26-75F 1264-1132
	1/4" / 6,4mm Tip Recess			N/A	WC26-62R 1264-1123	WC26-75R 1264-1133
600 AMP EL16 Series Tips	1/8" / 3,2mm Tip Flush	WC26-1 1264-1009	WC56EL-SW 1560-1146	WC26-50EL 1262-1031	WC26-62EL 1262-1032	WC26-75EL 1262-1033
	Tip Flush			N/A	WC26-62EL-F 1262-1037	WC26-75EL-F 1262-1038
	1/4" / 6,4mm Tip Recess			N/A	WC26-62EL-R 1262-1041	WC26-75EL-R 1262-1042

MIG GUN DIFFUSERS AND INSULATOR RINGS

	380 Amp	400 Amp	600 Amp
Diffuser	WC53-EL 1525-1140	WC54A 1544-1141	WC56A-SW 1564-1145
	N/A	N/A	WC56A-H 1564-1144
Insulator Ring	QTRW34RS 2062-2040	WC34R 2044-1034	WC36R 2064-1036
O-Ring	224S 2064-2059	224S 2064-2059	WC36-2 2064-2362



WC53-EL

MIG GUN CONDUCTOR TUBES AND NOZZLE HOUSINGS

	380 Amp	400 Amp	600 Amp
60°	WCS63-60R 1630-1146	WCS64-60 1644-1106	WCS66-60 1664-1106
45°	WCS63-50R* 1630-1145	WCS64-45 1644-1105	WCS66-45 1664-1105
Nozzle Housing	N/A	WCS34-H 1344-1844	WCS36-H 1344-1145

* Actual bend angle on this conductor tube is 50°

**ELIMINATOR® STYLE
DIFFUSERS**



EL52



EL52CT

EL250 & EL350		EL450 & EL600	
EL52 1560-1110 (SLIP-ON NOZZLE)	EL54-SW 1560-1114 (SLIP-ON NOZZLE) (NOTE: 1)	EL54CT-SW 1560-1116 (COARSE THREAD NOZZLE) (NOTE: 1)	
EL52CT 1560-1109 (COARSE THREAD NOZZLE)	EL54-H 1560-1115 (SLIP-ON NOZZLE) (NOTE: 2)	EL54CT-H 1560-1117 (COARSE THREAD NOZZLE) (NOTE: 2)	
EL52-1 1560-1108 (O-RING)	EL54-1 1560-1118 (O-RING)	EL54-1 1560-1118 (O-RING)	

Diffusers for No. EL600 Mig-Guns must be used with conduits as follows:

Note: 1 = 45-3545, 45-116, 45N-3545

Note: 2 = 45-564, 45N-116, 45H-332, 45H-764, 45H-18

DIFFUSERS FOR TRADITIONAL STYLE GUNS



51



52



55SW

MINI	NO. 1	NO. 2	NO. 3 & 4	NO. 5	NO. 5	NO. 6	NO. 6
35-50 1500-1100 (Standard)	51 1510-1101 (Standard)	52 1520-1101 (Standard)	54P 1540-1103 (Standard)	55SW 1550-1101 (Note:1)	55S-SW 1550-1110 (Note:1)	55S-SWL 1550-1120 (Note:1)	56S-SW 1560-1100
	51-23 1510-1100 (use with .023 Wire)	52-23 1520-1100 (use with .023 Wire)	54A 1540-1100	55 1550-1100 (Note:2)	(Use with 16S tips = 3/8 tip recess)	(Use with 16S tips = 1/8 tip recess)	56S-H 1560-1101
		52FN 1520-1102 (use with No. 3 & 4 nozzles)	54A-16 1540-1104	55H 1550-1102 (Note:3)	55S-H 1550-1111 (Note:4)	55S-HL 1550-1121	

Diffusers for No. 5 & 6 Mig-Guns must be used with conduits as follows:

Note: 1 = 45-3545, 45-116, 45N-3545

Note: 2 = 45-564, 45N-116

Note: 3 = 45H-332, 45H-764, 45H-18

Note: 4 = All Note 2 & 3 conduits.

**HEAVY DUTY
DIFFUSERS
FOR SPRAY MASTER™
STYLE GUNS**



EL 52CT-16

250 AMP	350 AMP	450 AMP	
HD52-11 1520-1130	EL52CT-16 1560-1107	MS54-16SW 1540-1127	HD54-16 1540-1136
Optional			
MS52T-11 1520-1133	EL52CT-14 1560-1106	MS54-16H 1540-1128	HD54-14 1540-1135 HD54-EL 1540-1137

MIG Welding Consumables



**CONDUCTOR TUBES
FOR SPRAY MASTER™
MIG GUNS ONLY**



MS63-60S

MS250 & MS350		MS450	
MS63-60S 1630-1196		MS64H-60 1640-1319	
MS63-45S 1630-1195 (Standard on 25ft. Guns Only)		MS64H-45 1640-1318 (Standard on 25ft. Guns Only)	
Optional			
MS63-180 1630-1187		MS64H-60LM* 1640-1317	
MS62A-60 1620-1340		MS64H-180 1640-1314	
MS64H-45LM 1640-1323		MS64-60† 1640-1340	

* Long tube

† For use with 450 EL consumables

**ELIMINATOR® STYLE
CONDUCTOR TUBES
FOR ELIMINATOR® GUNS ONLY**

DEGREE/BEND	ELC250 & ELC350	ELC450 & EL450	EL600 5" (127MM) RADIUS
45°	EL63J-45 1630-1136	EL64J-45 1640-1136	EL66J-45 1660-1206
60° (Standard)	EL63J-60 1630-1137	EL64J-60 1640-1137	EL66J-60 1660-1208
Front Insulator (Jacketed Tubes Only)	63J-3 1630-1121	66J-3 1660-1836	66J-3 1660-1836

**CONDUCTOR TUBES
(OPTIONAL LOCKING
NON-ARTICULATING BALL)
FOR ELIMINATOR® STYLE
GUNS ONLY**

DEGREE/BEND	ELC450 & EL450
60°	EL64JL-60 1640-1147

STANDARD CONDUCTOR TUBES FOR TRADITIONAL STYLE GUNS



DEGREE/BEND	MINI	NO. 1	NO. 2	NO. 3	NO. 4	NO. 5		NO. 6	
						5" RADIUS	5" RADIUS	5" RADIUS	5" RADIUS
45°	35-60-45 1600-1101	61-45 1610-1101	62J-45* 1620-1300	63J-45* 1630-1110	64J-45* 1640-1105	65J-45* 1650-1110	66J-45* 1660-1825		
60° (Standard)	35-60-60 1600-1102	61-60 1610-1102	62J-60* 1620-1301	63J-60* 1630-1111	64J-60* 1640-1106	65J-60* 1650-1111	66J-60 1660-1826		

* "J" in part number signifies metal jacketed.

OPTIONAL CONDUCTOR TUBES FOR TRADITIONAL STYLE GUNS



MINI-MIG-GUN	CONDUCTOR TUBE EXTENSIONS						
			NO. 3 & 4	NO. 5		NO. 3 & 4	NO. 5
60° For use with Aluminum Wire		Extension 4" 180°	64A-4EX 1640-1301	65-4EX 1650-1301	Extension 45°	64EX-45 1640-1311	65EX-45 1650-1311
Flexible Conductor Tube	35-60-F 1600-1140	Extension 6" 180°	64A-6EX 1640-1302	65-6EX 1650-1302	Extension 60°	64EX-60 1640-1312	65EX-60 1650-1312
		Extension 8" 180	64A-8EX 1640-1303	65-8EX 1650-1303	Extension 80°	N/A	N/A

Note: Extensions are designed to fit standard conductor tubes. Conduits must be replaced when installing conductor tube extensions.

**WIRE CONDUITS
FOR ALL GUNS
(ELIMINATOR®, TRADITIONAL AND
SPRAY MASTER™ STYLES)**



42-3035-15

ELIMINATOR			EL250		EL250, 350 & 450		EL600	
PROFESSIONAL	MINI-MIG-GUN (ALL MODELS)		MS250, NO. 1 & 2 (ALL MODELS)		MS350, MS450, NO. 3 & 4 (ALL MODELS & NO.5 X-GUNS)		NO. 5 & 6 (ALL EXCEPT X-GUNS)	
WIRE SIZE	15 ft/5M	20 ft/6M	15 ft/5M	25 ft/8M	15 ft/5M	25 ft/8M	15 ft/5M	25 ft/8M
.023 0,6mm	23-40-15 1400-1123	N/A	42-23-15 1420-1103	N/A	N/A	N/A	N/A	N/A
.030 - .035 0,8 - 0,9mm	35-40-15 1400-1133	35-40-20 1400-1134	42-3035-15 1420-1113	42-3035-25 1420-1115	N/A	N/A	N/A	N/A
.040 - .045 1,0 - 1,2mm	45-40-15 1400-1143	45-40-20 1400-1144	42-4045-15 1420-1123	42-4045-25 1420-1125	N/A	N/A	N/A	N/A
.035 - .045 0,9 - 1,2mm	N/A	N/A	N/A	N/A	44-3545-15 1440-1103	44-3545-25 1440-1105	45-3545-15 1450-1103	45-3545-25 1450-1105
.052 - 1/16 1,3 - 1,6mm	N/A	N/A	N/A	N/A	44-116-15 1440-1113	44-116-25 1440-1115	45-116-15 1450-1113	45-116-25 1450-1115
5/64 2,0mm	N/A	N/A	N/A	N/A	44-564-15 1440-1123	44-564-25 1440-1125	45-564-15 1450-1123	45-564-25 1450-1125
3/32 2,4mm	N/A	N/A	N/A	N/A	N/A	N/A	45H-332-15 1450-1133	N/A
7/64 2,8mm	N/A	N/A	N/A	N/A	N/A	N/A	45H-764-15 1450-1143	N/A
1/8 3,2mm	N/A	N/A	N/A	N/A	N/A	N/A	45H-18-15 1450-1153	N/A
ALUMINUM WIRE CONDUITS								
.030 - .035 AL 0,8 - 0,9mm	35TF-40-10** 1400-1031	N/A	42N-3545-15 1420-1003	N/A	44N-3545-15 1440-1003	N/A	45N-3545-15 1450-1003	N/A
.040 - 3/64 AL 1,0 - 1,2mm	45TF-40-10** 1400-1041	N/A	42N-3545-15 1420-1003	N/A	44N-3545-15 1440-1003	N/A	45N-3545-15 1450-1003	N/A
1/16 AL 1,6mm	N/A	N/A	N/A	N/A	44N-116-15 1440-1012	N/A	45N-116-15 1450-1013	N/A

** Aluminum wire conduit not recommended for lengths over 10ft./3M.

**ROBOTIC
CONDUIT LINERS**

**R44 SERIES
CONDUIT**

**R45 SERIES
CONDUIT**

STEEL WELDING WIRE

Wire Size	Part No. Stock No.	Wire Size	Part No. Stock No.
.035" / .045" 0,9mm / 1,2mm	R44-3545-1 1440-1223	.035" / .045" 0,9mm / 1,2mm	R45-3545-1 1450-1023
.035" / .045" 0,9mm / 1,2mm	R44-3545-4 1440-1224	.035" / .045" 0,9mm / 1,2mm	R45-3545-4 1450-1024
.035" / .045" 0,9mm / 1,2mm	R44-3545-8 1440-1225	.035" / .045" 0,9mm / 1,2mm	R45-3545-8 1450-1025
.035" / .045" 0,9mm / 1,2mm	R44-3545-15 1440-1226	.035" / .045" 0,9mm / 1,2mm	R45-3545-15 1450-1026
.052" / 1/16" 1,53mm / 1,6mm	R44-116-1 1440-1228	.052" / 1/16" 1,53mm / 1,6mm	R45-116-1 1450-1028
.052" / 1/16" 1,53mm / 1,6mm	R44-116-4 1440-1229	.052" / 1/16" 1,53mm / 1,6mm	R45-116-4 1450-1029
.052" / 1/16" 1,53mm / 1,6mm	R44-116-8 1440-1230	.052" / 1/16" 1,53mm / 1,6mm	R45-116-8 1450-1030
.052" / 1/16" 1,53mm / 1,6mm	R44-116-15 1440-1231	.052" / 1/16" 1,53mm / 1,6mm	R45-116-15 1450-1031

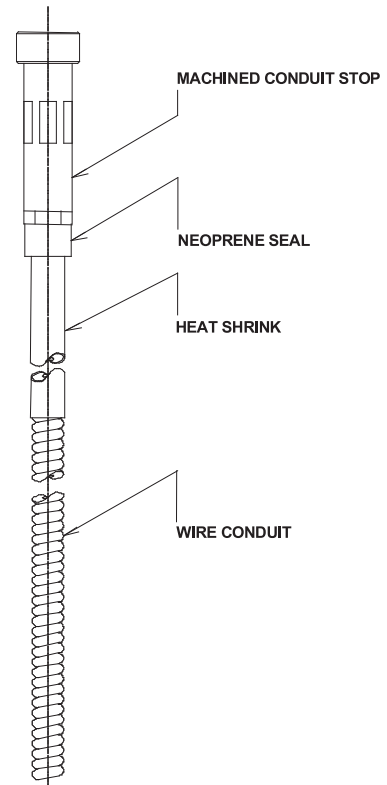
ALUMINUM WELDING WIRE

Wire Size	Part No. Stock No.	Wire Size	Part No. Stock No.
.035" / .045" 0,9mm / 1,2mm	R44WN-3545-4 1440-1040	.035" / .045" 0,9mm / 1,2mm	R45WN-3545-4 1450-1041
.035" / .045" 0,9mm / 1,2mm	R44WN-3545-8 1440-1041	.035" / .045" 0,9mm / 1,2mm	R45WN-3545-8 1450-1042
.035" / .045" 0,9mm / 1,2mm	R44WN-3545-15 1440-1042	.035" / .045" 0,9mm / 1,2mm	R45WN-3545-15 1450-1043
1/16" 1,6mm	R44WN-116-8 1440-1046	1/16" 1,6mm	R45WN-116-8 1450-1044
1/16" 1,6mm	R44WN-116-15 1440-1047	1/16" 1,6mm	R45WN-116-15 1450-1045

Note: R44 series conduits are shipped with all Euro-Kwik Torch and Cable Assemblies
"WN" = Wire Nylon Wrapped

**BRONZE JUMP LINER
PART NO. AWC44-116 (STOCK NO. 1644-1085)**

The use of a jump liner improves arc starts and provides an improved current transfer between the contact tip and aluminum wire. The jump liner can also be used for wear issues found with the liner inside the conductor tube area when using stainless steel wires.



NOTES

Manual Arc Welding Accessories



- **Electrode Holders**
- **Ground Clamps**
- **Cable Connectors**
- **Solder Lugs**
- **Terminals, Connectors**
- **Panel Receptacles**
- **Other Accessories**

TWECOTONG® ELECTRODE HOLDERS

TWECOTONG® ELECTRODE HOLDERS feature reversible top and bottom Insulators. Efficient 6-position jaw patterns and fully insulated, protected springs. Ball-point cable connection is also featured.

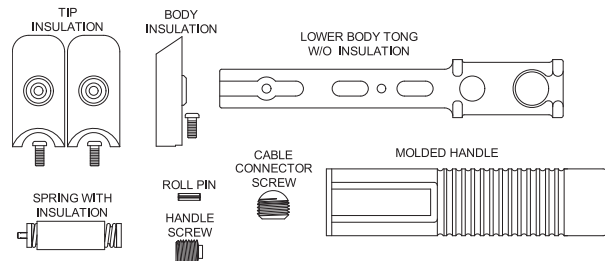


Stock Number	Model Number	Amperage Capacity	Body Alloy	Electrode Capacity	Cable Conn Capacity	English Length	Metric Length
9110-1101	A-532	200	Copper Alloy	thru 5/32" (4,0mm)	Ball-Point thru 2/0	8 1/2"	216mm
9110-1102	A-316	250	Copper Alloy	thru 3/16" (4,8mm)	Ball-Point thru 2/0	9 1/4"	235mm
9110-1103	A-732	300	Copper Alloy	thru 7/32" (5,6mm)	Ball-Point thru 2/0	10"	254mm
9110-1104	A-14	350	Copper Alloy	thru 1/4" (6,4mm)	Ball-Point thru 4/0	11"	279mm
9110-1105	A-14-HD	400	Copper Alloy	thru 1/4" (6,4mm)	Double Ball-Point thru 4/0	12"	305mm
9110-1106	A-38-HD	500	Copper Alloy	thru 3/8" (9,5mm)	Double Ball-Point thru 4/0	13 1/4"	336mm



Stock Number	Model Number	Description	Amperage Capacity	Electrode Capacity	Cable Conn Capacity	English Length	Metric Length
9120-1000	4TT	TWECO-TITE Holder	400	1/16" thru 1/4" 1,6mm thru 6,4mm	thru 3/0	9"	229mm

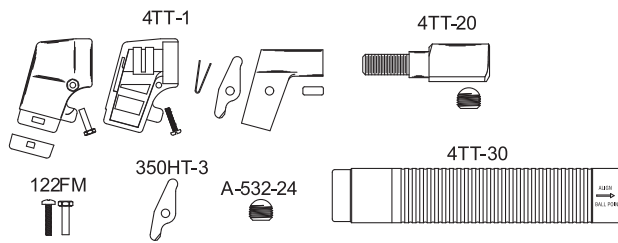
TWECOTONG® ELECTRODE HOLDER PARTS



DESCRIPTION	A-532 (STOCK) PART NO.	A-316 (STOCK) PART NO.	A-732 (STOCK) PART NO.	A-14 (STOCK) PART NO.	A-14-HD (STOCK) PART NO.	A-38-HD (STOCK) PART NO.
TIP INSULATION	(9910-2101) A-532-1P	(9910-2101) A-532-1P	(9910-2302) A-732-1P	(9910-2301) A-732-P	(9910-2301) A-732-P	(9910-2602) A-38-HD-1P
BODY INSULATION	(9910-2103) A-532-3	(9910-2103) A-532-3	(9910-2103) A-532-3	(9910-2403) A-14-3	(9910-2403) A-14-3	(9910-2603) A-38-HD-3
*LOWER BODY TONG W/O INS.	(9910-2204) A-316-4R	(9910-2204) A-316-4R	(9910-2304) A-732-4	(9910-2404) A-14-4	(9910-2504) A-14-HD-4	(9910-2604) A-38-HD-4
SPRING W/INSULATION	(9910-2106) A-532-6	(9910-2206) A-316-6	(9910-2206) A-316-6			
MOLDED HANDLE	(9910-2107) A-532-7	(9910-2207) A-316-7	(9910-2307) A-732-7	(9910-2407) A-14-7	(9910-2507) A-14-HD-7	(9910-2607) A-38-HD-7
HINGE PIN	(9910-2111) A-532-11	(9910-2111) A-532-11	(9910-2111) A-532-11	(9910-2111) A-532-11	(9910-2111) A-532-11	(9910-2610) FGC-200-5
HANDLE SCREWS	(9910-2712) AL-300-12	(9910-2712) AL-300-12	(9910-2712) AL-300-12	(9910-2712) AL-300-12	(9910-2712) AL-300-12	(9910-2712) AL-300-12
CABLE CONN. SCREW	(9910-2124) A-532-24	(9910-2124) A-532-24	(9910-2124) A-532-24	(9910-2424) A-14-24	(9910-2424) A-14-24	(9910-2424) A-14-24

TWECO-TITE Electrode Holder Parts continued - See Page 51

“TWECO-TITE” HOLDER PARTS



Stock Number	Part Number	Description
9911-2001	4TT-1	Head Assy - Complete (renewable)
9911-2303	350HT-3	Steel Jaw
9911-2020	4TT-20	Connector Body w/Ball-Point Screw
9911-2030	4TT-30	Handle Only
9910-2124	A-532-24	Ball-Point Screw
2020-2122	122FM	Binder Post & Screw - for Head Ins.

TWECO GROUND CLAMPS



Stock Number	Model Number	Amperage Capacity	Jaw Opening	Cable Conn Capacity	English Length	Metric Length
9205-1230	SGC-300	300	2" - Depth 1 3/4" 50,8mm - 44,4mm	1/2" Stud Connection	9"	228mm
9205-1250	SGC-500	500	2" - Depth 1 3/4" 50,8mm - 44,4mm	1/2" Stud Connection	9"	228mm
9205-1120	GC-200	200	1" - Depth 3" 25,4mm - 76,2mm	Ball-Point thru 1/0	6"	157mm
9205-1130	GC-300	300	1 1/2" - Depth 4" 38,1mm - 101,0mm	Ball-Point thru 3/0	8 1/2"	216mm
9205-1150	GC-500	500	2" - Depth 5 1/4" 50,8mm - 133,0mm	Ball-Point thru 4/0	10"	254mm
9205-1320	FGC-200	200	5/8" - Depth 2" 15,9mm - 50,8mm	Ball-Point thru 1/0	5"	127mm
9205-1330	FGC-300	300	1" - Depth 3 1/2" 25,4mm - 88,9mm	Ball-Point thru 3/0	7 1/4"	184mm

STEEL CLAMP PARTS

Stock Number	Part Number	Description
9920-2504	SGC-500-4	Cone Head Replacement Jaw - for SGC-300 and SGC-500

COPPER CLAMP PARTS

MODEL NO.	INSULATED SPRING		CABLE SUPPORT RING		CABLE CONNECTION SCREW	
	STOCK NO.	PART NO.	STOCK NO.	PART NO.	STOCK NO.	PART NO.
GC-200	9920-2202	GC-200-2	9920-2211	GC-200-11	9920-2212	GC-200-12
GC-300	9920-2302	GC-300-2	9920-2311	GC-300-11	9920-2312	GC-300-12

HEAVY DUTY ROTARY GROUND DEVICES

Tweco® Roto-Ground is a highly efficient device for grounding weldments while being rotated on turning rolls or positioners. The 2" shaft shoulders up to a steel nut which the user welds to his rotating work or fixture. Tweco Roto-Grounds have no brushes, springs or mercury. A simple tension adjusting bolt provides maximum efficiency.

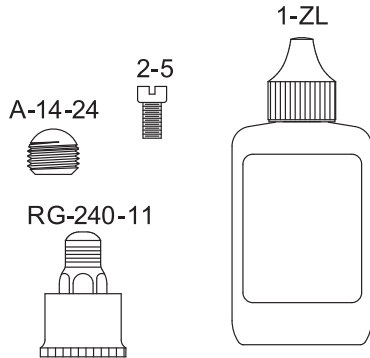


RG-440

GCRG-140

Stock Number	Model Number	Amperage Capacity	Cable Capacity	Number of Heads	Shaft Stud	English Length	Metric Length
9250-1114	RG-140	400	1-4/0	1	3/4" NC	8"	203mm
9250-1123	RG-230	600	2-3/0	1	1 1/8" NC	10 1/4"	260mm
9250-1124	RG-240	800	2-4/0	1	1 3/8" NC	10 5/8"	270mm
9250-1144	RG-440	1500	4-4/0	2	1 3/8" NC	10 5/8"	270mm
9250-1164	RG-640	2000	6-4/0	3	1 3/8" NC	10 5/8"	270mm
9210-1314	GCRG-140	400	1-4/0	1	3/4" NC		

ROTO-GROUND PARTS



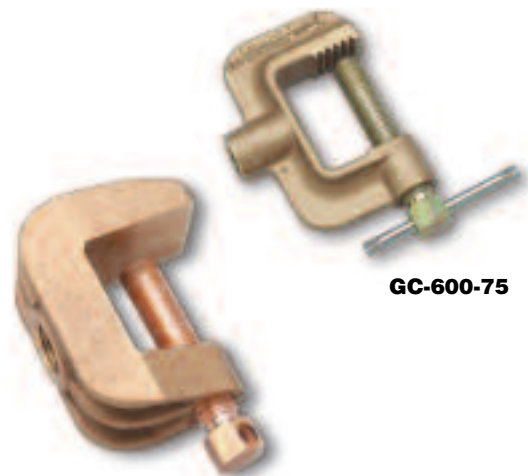
Stock Number	Part Number	Description
9922-2129	RG-240-11	Lubricating Cup
9910-2424	A-14-24	Ball-Point Cable Connection Screw
9900-1123	1Z-L	Special Shaft Lubricant
9940-2125	2-5	Fibre Cover Screw

DESCRIPTION	RG-140 (STOCK) PT. NO.	RG-230 (STOCK) PT. NO.	RG-240 (STOCK) PT. NO.	RG-440 (STOCK) PT. NO.	RG-640 (STOCK) PT. NO.
HEAD	(9922-2103) RG-140-2-0	(9922-2113) RG-230-3-0	(9922-2124) RG-240-4-0	(9922-2124) RG-240-4-0	(9922-2124) RG-240-4-0
HEAD SHAFT	(9922-2102) RG-140-2	(9922-2112) RG-230-2	(9922-2122) RG-240-2	(9922-2132) RG-440-2	(9922-2142) RG-640-2
WORK ATTACHMENT NUT	(9922-2105) RG-140-5	(9922-2115) RG-230-5	(9922-2125) RG-240-5	(9922-2125) RG-240-5	(9922-2125) RG-240-5
FIBRE COVER		(9922-2127) RG-240-7	(9922-2127) RG-240-7	(9922-2127) RG-240-7	(9922-2127) RG-240-7

TWECO® ROTO-WORK GROUNDING CLAMPS

Tweco Roto-Work Ground Clamps are designed primarily to work in conjunction with the Tweco Roto-Ground Device. However, they may also be used for other high amperage grounding applications. The Roto-Ground shaft screws into the tapped back of the Roto-Work Clamp. The clamp is quickly attached or moved from one rotating weldment or fixture to the other without removing the Roto-Ground from it. Saves welding down time.

Roto-Work Clamps are made from a copper alloy. They come in 600, 1200 and 2000 ampere capacity. Number WCRG-2000 has two tightening screws. Number WCRG-600 works only with No. RG-230 due to its smaller shaft size. Large tightening screws and ample contact surface area provide cool, efficient operation.



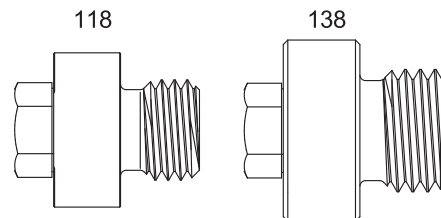
WCRG-1200

GC-600-75

Stock Number	Model Number	Amperage Capacity	Fits Roto-Ground	Clamp Contact	Throat Height	Throat Depth	Over-All Height	Over-All Width	Tapped For
9255-1106	WCRG-600	600	RG-230	6 1/4 Sq. In.	2 1/2" 63,5mm	2 1/2" 63,5mm	5 3/4" 146,0mm	2 1/2" 63,5mm	1 1/8" NC
9255-1112	WCRG-1200	1200	RG-240/440	9 Sq. In.	3" 76,2mm	3" 76,2mm	6 3/4" 171,0mm	3" 76,2mm	1 3/8" NC
9255-1120	WCRG-2000	2000	RG-440/640	12 Sq. In.	3" 76,2mm	3" 76,2mm	6 3/4" 171,0mm	4" 102,0mm	1 3/4" NC
9255-1075	GC-600-75	Clamp Only - Tapped 3/4" for RG-140 Roto-Ground Only							

Stock Number	Model Number	Amperage Capacity	Jaw Opening	Cable Conn Capacity	English Length	Metric Length
9210-1150	GC-600-50	500	2 1/2" - Depth 1 3/8" 63,5mm - 41,3mm	1/2" Cap Screw		
9210-1201	GC-600-DBP	600	2 1/2" - Depth 1 3/8" 63,5mm - 34,9mm	Double Ball-Point		
9210-1202	GC-600-TMP	600	2 1/2" - Depth 1 3/8" 69,5mm - 34,9mm	Tweco Male Plug		

Stock Number	Part Number	Description
9922-2018	118	Work Clamp Adapter
9922-2038	138	Work Clamp Adapter



"C" TYPE CLAMP PARTS

Stock Number	Part Number	Description
9920-2100	CS-6	Cap Screw - 1/2" x 3/4" NC
9920-2102	GCM-2-4	Fitting-No.2 Male Plug (threaded 1/2" NC)

Stock Number	Part Number	Description
9920-2103	GCS-40	Fitting-Double Ball-Point (threaded 1/2"NC)
9940-2124	24R-MBP	Cover

TWECO CABLE CONNECTORS

Tweco MPC connectors provide a positive cam action which optimizes interface between connector halves. The connectors are equipped with heat and oil resistant covers. The MPC connectors are furnished with zinc plated cover and ball-point cable screws. They are interchangeable with older Tweco MBP Connectors.

The Whip Cable Connector is used when down sizing cable to an electrode holder. It is a No. 2 male connector with cable hole sized to fit 4, 2, 1 or 1/0 cable. The 2-1-MPC will fit any No. 2 or No. 4 female connector.



4-MPC



2-1-MPC

Stock Number	Model Number	Description	Type Cable Connection	Cable Capacity	Standard Package
MPC SERIES POSITIVE-CAM Mechanical Connection - zinc plated type cable & cover screws					
9425-1100	1-MPC	Complete Connection	Single Ball-Point	4, 2, 1	1 ea. Male/Female
9425-1110	1-MPC-1	Male Half	Single Ball-Point	4, 2, 1	Pkg. 2 ea. Male
9425-1120	1-MPC-2	Female Half	Single Ball-Point	4, 2, 1	Pkg. 2 ea. Female
9425-1200	2-MPC	Complete Connection	Single Ball-Point	1/0, 2/0, 3/0	1 ea. Male/Female
9425-1210	2-MPC-1	Male Half	Single Ball-Point	1/0, 2/0, 3/0	Pkg. 2 ea. Male
9425-1220	2-MPC-2	Female Half	Single Ball-Point	1/0, 2/0, 3/0	Pkg. 2 ea. Female
9425-1400	4-MPC	Complete Connection	Double Ball-Point	3/0 or 4/0	1 ea. Male/Female
9425-1410	4-MPC-1	Male Half	Double Ball-Point	3/0 or 4/0	Pkg. 2 ea. Male
9425-1420	4-MPC-2	Female Half	Double Ball-Point	3/0 or 4/0	Pkg. 2 ea. Female
9425-1140	2-1-MPC	Whip Connection	Single Ball-Point	4, 2, 1, 1/0	Pkg. 2 ea.



1-M-T



2-CLC

Replacement Tapered Machine Plugs - Ball-Point Connection

Stock Number	Plug Number	Taper Length	Taper Dimension	Cable Capacity
9505-1800	1-M-T	1 1/8" 28,6mm	21/64" to 23/64" 8,3mm x 9,1mm	4, 2, 1
9505-1801	2-M-T	1 1/8" 28,6mm	21.64" to 23/64" 8,3mm x 9,1mm	1/0, 2/0, 3/0

Receptacle Conversion Adapters

Stock Number	Adapter Number	Fits Cam Locking Machine Receptacle	Fits Tweco Male Plug Ends
9505-1811	2-CLC	Large - 11/16" I.D. 17,5mm	No. 2-MPC, 4-MPC

CABLE CONNECTOR REPLACEMENT PARTS

MPC SERIES POSITIVE-CAM - zinc plated type cable & cover screws

Stock Number	Part Number	Description
9940-2103	1R-C	Insulating Cover Only, All 1-MPC
9940-2124	24R-MBP	Insulating Cover Only, All 2 & 4 MPC
9940-2100	1-MBP-10	Cable Connection Screw, Zinc Plated All 1-MPC
9910-2124	A-532-24	Cable Connection Screw, Zinc Plated, All 2-MPC
9910-2424	A-14-24	Cable Connection Screw, Zinc Plated, All 4-MPC
9940-2125	2-5	Cover Screw, Zinc Plated, All MPC Connectors

TWECOLUGS CRIMP OR SOLDER TYPE (use Tweco "Lug-Set")



Stock Number	Model Number	Welding Cable Size	Amp Rating	Size of Stud Hole	I.D. Solder Socket	Std Pkg
9520-1115	T-62-50	6 thru 2	150	17/32" 13,5mm	.461" 11,7mm	50
9520-1104	T-62	6 thru 2	150	17/32" 13,5mm	.461" 11,7mm	5
9520-1116	T-120-50	1 thru 2/0	225	17/32" 13,5mm	.559" 14,2mm	50
9520-1105	T-120	1 thru 2/0	225	17/32" 13,5mm	.559" 14,2mm	5
9520-1117	T-3040-25	3/0 & 4/0	250	17/32" 13,5mm	.660" 16,7mm	25
9520-1107	T-3040	3/0 & 4/0	250	17/32" 13,5mm	.660" 16,7mm	5
9520-1118	T-40HD-25	4/0 Heavy-Duty	325	21/32" 17,7mm	.776" 19,7mm	25
9520-1109	T-40HD	4/0 Heavy-Duty	325	21/32" 17,7mm	.776" 19,7mm	5
POWER CABLE LUGS						
9520-1119	T-810-200	8 thru 10	50	13/64" 5,2mm	.238" 6,1mm	200
9520-1101	T-810	8 thru 10	50	13/64" 5,2mm	.238" 6,1mm	10
9520-1120	T-68-125	6 thru 8	70	21/64" 8,3mm	.289" 7,3mm	125
9520-1102	T-68	6 thru 8	70	21/64" 8,3mm	.289" 7,3mm	10
9520-1121	T-46-100	4 thru 6	90	21/64" 8,3mm	.347" 8,8mm	100
9520-1103	T-46	4 thru 6	90	21/64" 8,3mm	.347" 8,8mm	10

TWECO TERMINALS AND TWECOLUGS®

TWECO SCREW-ON TERMINALS

Fits Terminal Size 1/2" (12,7mm) NC



(MODEL NO. / STOCK NO.)	Accepts Tweco Connector Number
1-SF-50 9505-1151	No. 1 Male Half
2-SF-50 9505-1152	No. 2 & No. 4 Male Half

TWECO® FEMALE TERMINALS

Stud Hole Size 17/32" (13,5mm)



(MODEL NO. / STOCK NO.)	Description	Accepts Male Ends	Standard Package
1-AF-24 9510-1102	45° Angle	1-MPC	24
1-AF 9510-1100	45° Angle	1-MPC	1
1-OF-24 9510-1103	180° Offset	1-MPC	24
1-OF 9510-1101	180° Offset	1-MPC	1
2-AF-24 9510-1112	45° Angle	2-MPC, 4-MPC	24
2-AF 9510-1110	45° Angle	2-MPC, 4-MPC	1
2-OF-24 9510-1113	180° Offset	2-MPC, 4-MPC	24
2-OF 9510-1111	180° Offset	2-MPC, 4-MPC	1

REPLACEMENT PARTS

Stock Number	Part Number	Description
9950-2100	1-AF-11	Insulated Cover - for 1-AF
9950-2101	1-OF-11	Insulated Cover - for 1-OF
9950-2102	2-AF-11	Insulated Cover - for 2-AF

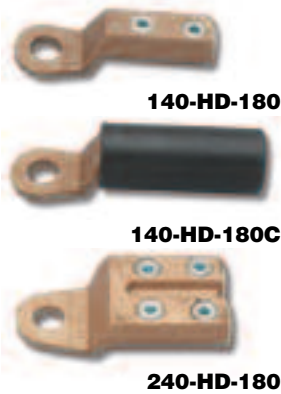
Stock Number	Part Number	Description
9950-2103	2-OF-11	Insulated Cover - for 2-OF
9940-2125	2-5	Extra Cover Screws

BALL-POINT CONNECTION TYPE LUGS

Stud Hole Size 17/32" (13,5mm)



(MODEL NO. / STOCK NO.)	Description	Cable Capacity	Standard Package
10-45-12 9515-1104	45° Angle less insulated cover	thru 1/0	12
10-45 9515-1100	45° Angle less insulated cover	thru 1/0	1
10-180-12 9515-1105	180° Offset less insulated cover	thru 1/0	12
10-180 9515-1102	180° Offset less insulated cover	thru 1/0	1
40-45-12 9515-1106	45° Angle less insulated cover	thru 4/0	12
40-45 9515-1110	45° Angle less insulated cover	thru 4/0	1
40-180-12 9515-1107	180° Offset less insulated cover	thru 4/0	12
40-180 9515-1112	180° Offset less insulated cover	thru 4/0	1
10-45C-12 9515-1108	45° Angle with insulated cover	thru 1/0	12
10-45C 9515-1101	45° Angle with insulated cover	thru 1/0	1
10-180C-12 9515-1109	180° Offset with insulated cover	thru 1/0	12
10-180C 9515-1103	180° Offset with insulated cover	thru 1/0	1
40-45C-12 9515-1114	45° Angle with insulated cover	thru 4/0	12
40-45C 9515-1111	45° Angle with insulated cover	thru 4/0	1
40-180C-12 9515-1115	180° Offset with insulated cover	thru 4/0	12
40-180C 9515-1113	180° Offset with insulated cover	thru 4/0	1



HEAVY-DUTY TYPE LUGS

Mechanical Ball-Point

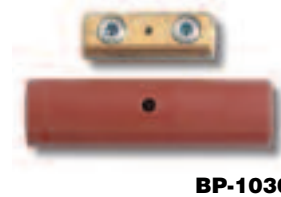
(MODEL NO. / STOCK NO.)

	Description	Cable Capacity	Size Of Stud Hole	English Package	Metric Length
140-HD-180 9515-1120	180° Offset	3/0 & 4/0	21/32" 16,7mm	4 3/8"	111mm
140-HD-180C 9515-1121	With Insulated Cover - 180° Offset	3/0 & 4/0	21/32" 16,7mm	5 1/2"	140mm
240-HD-180 9515-1122	180° Offset	3/0 & 4/0	21/32" 16,7mm	4 5/8"	131mm

TWECO® CABLE SPLICERS

Ball-Point Type

(MODEL NO. / STOCK NO.)



BP-1030

	Cable Fitting Type	Cable Capacity	Standard Package
BP-410-12 9605-1102	Ball Point	4, 2, 1, 1/0	12
BP-410 9605-1101	Ball Point	4, 2, 1, 1/0	1
BP-1030-12 9605-1104	Ball Point	1/0, 2/0, 3/0	12
BP-1030 9605-1103	Ball Point	1/0, 2/0, 3/0	1
BP-2040-6 9605-1106	Ball Point	2/0, 3/0, 4/0	6
BP-2040 9605-1105	Double Ball Point	2/0, 3/0, 4/0	1

PANEL RECEPTACLES

Use With MPC Connectors

(MODEL NO. / STOCK NO.)



238-TSF

2916-BPF

	Cable Fitting Type	Fits Tweco Connector	For Cable Size	Cable Attachment
1516-BPF 9580-1100	Ball-Point	No. 1	4, 2, 1	5/16" Ball-Point 7,9mm
114-TSF 9580-1101	Threaded	No. 1	4, 2, 1, 1/0	5/16" Thread, Stud 7,9mm
238-TSF 9580-1102	Threaded	No. 2, 4	1/0, 2/0, 3/0	3/8" Thread, Stud 9,5mm
2916-BPF 9580-1103	Ball-Point	No. 2, 4	1/0, 2/0, 3/0	9/16" Ball-Point 14,3mm
212-TSF 9580-1104	Threaded	No. 2, 4	1/0, 2/0, 3/0	1/2" - 20 Thread, Stud 12,7mm

CABLE SPLICERS

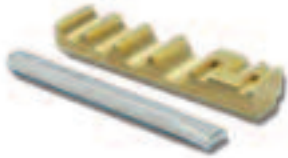


TS-3040

(MODEL NO. / STOCK NO.)	Description	Welding Cable Size	Tube I.D.	Standard Package
TS-62-50 9610-1105	Copper Splicer	6 thru 2	.461" 11,7mm	50
TS-62 9610-1101	Copper Splicer	6 thru 2	.461" 11,7mm	5
TS-120-50 9610-1106	Copper Splicer	1 thru 2/0	.599" 15,2mm	50
TS-120 9610-1102	Copper Splicer	1 thru 2/0	.599" 15,2mm	5
TS-3040-25 9610-1107	Copper Splicer	3/0 thru 4.0	.660" 16,8mm	25
TS-3040 9610-1103	Copper Splicer	3/0 thru 4.0	.660" 16,8mm	5
TS-40HD-24 9610-1108	Copper Splicer	4/0 Heavy-Duty	.776" 19,7mm	24
TS-40HD 9610-1104	Copper Splicer	4/0 Heavy-Duty	.776" 19,7mm	5

TWECO® “LUG-SET” BLOCK & PUNCH

For Use With Twecolugs



12-BP

(MODEL NO. / STOCK NO.)	Description
12-BP 9900-1140	Block & Punch

JACKET STRIPPING CABLE CUTTING HAND TOOL



T-908

(MODEL NO. / STOCK NO.)	Description
T-908 9900-1190	Tweco Cable Cutting Hand Tool

TWECO SHAFT LUBRICANT

An electrical conductive grease to be used as a lubricant for roto-grounds and may be used when making mechanical connections with copper or aluminum cables. Effective as a lubricant on sliding or moving electrical contacts such as switches and rotating grounding devices. Apply generously to contact area from 1 oz. (29,6ml) or 8 oz. (237,0ml) plastic squeeze bottles. Reduce electrical resistance by as much as 40 to 50%



5B-L

8Z-L

1Z-L

(MODEL NO. / STOCK NO.)	Description
1Z-L 9900-1123	Tweco Shaft Lubricant, 1 oz. (29,6ml) Plastic Squeeze Bottle
8Z-L 9900-1124	Tweco Shaft Lubricant, 8 oz. (237,0ml) Plastic Squeeze Bottle
5B-L 9900-1125	Tweco Shaft Lubricant, 5 lb. (2,3kg) Jar

ROD OVEN TRB50 (110V)

- All stainless steel construction.
- Tool box construction makes unit easy to carry and open.
- Holds 50 lbs. of loose rods or 50 lb. container.
- All stainless interior tub sealed so moisture does not seep into insulation.
- Temperature control can be set at 100°F to 300°F.
- Energy efficient heating element heats rods quicker and with less electricity than other competitor ovens.
- New high tech insulation allows oven to heat 25% faster and holds the heat 25% longer than competitive ovens.



TRB50

Part No. / Stock No.	TRB50 / 9900-1160
Electrode Capacity:	50 lbs. / 22,7Kg
Volts:	120
Thermostat:	Adjustable
Temperature Range:	150F-300F/60C - 150C
Element:	1 ea. 150 watt arc element for even heat distribution.
Cabinet:	Stainless Steel
Illuminated Power Indicator Dimensions:	23" x 9" x 11" 584mm x 229mm x 279mm
Shipping Weight:	30 lbs. / 13,6 Kg

NOTES

Air Carbon Arc Gouging Torches & Equipment; Slice Exothermic Cutting Systems



EXTREME™ Air Carbon Arc Gouging Torches

Arcair
Professional

Angle-Arc® Manual Gouging Torches



Only Arcair® – the inventor of the original air carbon arc process and the industry leader for 50 years – could bring you the superb marriage of proven technology and improved design. Only Angle-Arc Torches work efficiently with the natural angles and movements of the arm and wrist. This major advance in gouging and cutting equipment delivers rugged reliability. The addition of superb support and complete technical backup makes Arcair the number one name in air carbon arc manual torches.

Arcair Angle-Arc Torches are highly efficient metal removal tools for fabrication jobs in steel fabrication plants, shipyards, railroads, farms . . . anywhere people want to save time and money. They speed up weld removal, backgouging, edge preparation, defect repair and many other metal removal jobs. They are ideal for almost all metals – with little or no deformation – because the heat input is so low.

Now a complete family of Angle-Arc Torches to meet your everyday needs. Just pick the best torch to fit your gouging applications.



K2000	K3000	K4000	K5000
Light Duty	Medium Duty	Heavy Duty	Extra Heavy Duty
Accepts: Pointed Carbons: 1/8" (3mm) to 1/4" (6mm) Flat Carbons: 3/8" (10mm) Maximum 450 Amps Compressed air: Pressure: 40 psi (2.8kg/cm ²) Flow Rate: 8 cfm (0.23m ³ /min) Torch & Cable Weight: 3.6 lbs. (1.6kg)	Accepts: Pointed Carbons: 1/8" (3mm) to 3/8" (10mm) Flat Carbons: 3/8" (10mm) & 5/8" (16mm) Maximum 600 Amps Compressed air: Pressure: 80 psi (5.6kg/cm ²) Flow Rate: 21 cfm (0.60m ³ /min) Torch & Cable Weight: 4.0 lbs. (1.8kg)	Accepts: Pointed Carbons: 5/32" (4mm) to 1/2" (13mm) Flat Carbons: 3/8" (10mm) & 5/8" (16mm) Maximum 1000 Amps Compressed air: Pressure: 80 psi(5.6kg/cm ²) Flow Rate: 28 cfm (0.79m ³ /min) Torch & Cable Weight: 5.4 lbs. (2.4kg)	Accepts: Pointed Carbons: 5/32" (4mm) to 5/8" (16mm) Flat Carbons: 3/8" (10mm) & 5/8" (16mm) Maximum 1250 Amps Compressed air: Pressure: 80 psi(5.6kg/cm ²) Flow Rate: 30 cfm(0.85m ³ /min) Torch & Cable Weight: 6.8 lbs. (3.1kg)

Ordering Information

	(PART NO.)				
	Torch Only	Torch w/ 7ft. Cable	Torch w/ 7ft. Cable & Insulated Hook-Up Kit	Torch w/ 10ft. Cable	Torch w/ 10ft. Cable & Insulated Hook-Up Kit
K2000	01-046-001	61-046-006	61-046-002	61-046-007	61-046-003
K3000	01-065-001	61-065-006	61-065-002	61-065-007	61-065-003
K4000	01-082-002	61-082-008	61-082-006	61-082-009	61-082-007
K5000	01-105-001	61-105-002	N/A	61-105-003	N/A

Features & Benefits

Natural 15° Torch Angle	Greater operator comfort	Reduced Weight	Optimum cable and torch weight to minimize fatigue
360° Swivel Cable	Less cable twist Less strain on operator	High Quality Cable Hose	Best quality cable hose offers high heat and abrasion resistance
Positive Grip Handle	Greater operator feel and ease in positioning the torch	Rugged Construction	Overall rugged construction for the harsh environment

U.S. Customer Care: 800-426-1888 / FAX 800-535-0557

Straight Handle Manual Gouging Torches



Only Arcair® – the inventor of the original air carbon arc process and the industry leader for 50 years – could bring you the superb marriage of proven technology and improved design. The K-3 and K-5 are just two torches in a line of gouging and cutting equipment that delivers rugged reliability. The addition of superb support and complete technical backup makes Arcair the number one name in air carbon arc manual torches.

The K-Model Manual Torches are an essential part of the money-saving air carbon arc metal removal process, which melts metal with an electric arc, then blows it away with a jet of ordinary shop compressed air.

These torches are highly efficient metal removal tools for fabrication jobs in steel fabrication plants, shipyards, railroads, farms . . . anywhere people want to save time and money. They speed up weld removal, backgouging, edge preparation, defect repair and many other metal removal jobs. They are ideal for almost all metals – with little or no deformation – because the heat input is so low.

The K-Model Torches offer the reliable and rugged design users expect from Arcair Torches, just pick the best torch to fit your gouging applications.



K-3	K-5
Medium Duty	Extra Heavy Duty
Accepts: Pointed Carbons: 1/8" (3mm) to 3/8" (10mm) Flat Carbons: 3/8" (10mm) & 5/8" (16mm) Maximum 600 Amps Compressed air: Pressure: 80 psi (5.6kg/cm ²) Flow Rate: 21 cfm (0.60m ³ /min) Torch & Cable Weight: 4.0 lbs. (1.8kg)	Accepts: Pointed Carbons: 5/32" (4mm) to 5/8" (16mm) Flat Carbons: 3/8" (10mm) & 5/8" (16mm) Maximum 1250 Amps Compressed air: Pressure: 80 psi (5.6kg/cm ²) Flow Rate: 30 cfm (0.85m ³ /min) Torch & Cable Weight: 6.8 lbs. (3.1kg)

Ordering Information

	(PART NO.)				
	Torch Only	Torch w/ 7ft. Cable	Torch w/ 7ft. Cable & Insulated Hook-Up Kit	Torch w/ 10ft. Cable	Torch w/ 10ft. Cable & Insulated Hook-Up Kit
K-3	01-064-003	61-064-016	61-064-012	61-064-017	61-064-013
K-5	01-104-003	61-104-007	N/A	61-104-008	N/A

Features & Benefits

Reliable Torch Design	Greater operator comfort	Reduced Weight	Optimum cable and torch weight to minimize fatigue
Swivel Cable	Less cable twist Less strain on operator	High Quality Cable Hose	Best quality cable hose offers high heat and abrasion resistance
Positive Grip Handle	Greater operator feel and ease in positioning the torch	Rugged Construction	Overall rugged construction for the harsh environment

Automated Metal-Removal System

Arcair
Professional

ARCAIR-MATIC® N6000 Automated Metal-Removal System

- Gouging that is five times faster than hand held torches.
- Gouges more accurate and consistent.
- Automatic grooves that require less grinding than manually made grooves.
- Economical J-groove and U-groove edge preparations.



The Arcair-Matic® N6000 Metal-Removal System was designed to provide the best levels of control, uniformity and productivity in automated gouging of steels and other metals with the air carbon arc process. Usage of the N6000 System has expanded to a wide variety of new and unique jobs. The N6000 system measures minute variations in the arc voltage or amperage, compares them with preset standards, and takes immediate action through its feedback control maintaining the precise arc gap for optimum gouging.

Groove depth is maintained within a tolerance $\pm 0.025"$ (0,635mm). The N6000 System is ideally suited for metal fabrication, particularly in weld joint preparation, where it is used to prepare uniform "U" or "J" grooves. The System is also used extensively for backgouging of seams and for removing defective welds and cracks.

ARCAIR-MATIC® N6000 METAL-REMOVAL SYSTEMS

	(PART NO.)
Description	Arcair
120 VAC 60 Hz	65-991-013
220 VAC 50 Hz	65-991-014

TITAN® MACHINE CARRIAGE N6000 Grooving Kits

Packages listed below include:

- | | |
|---|---|
| <ul style="list-style-type: none"> • Titan Machine Carriage • Lifting bracket • One 10' Track Assembly • Three Magnet & Support Bars • Cable & Hose Clamp Assembly • Horizontal Rack Assembly • Vertical Adjustment Assembly • Automatic Controller • 1600 amp Contactor | <ul style="list-style-type: none"> • Torch Head • Air Regulator • 2 each 4' (1,2M) Power Cables • 14" (356mm) Interconnect Cable • 10' (3M) Remote Pendant Assembly • 3' (1M) Motor Cable Assembly • 4' (1,2M) Air Hose Assembly • Pertinent Fasteners • Clamps and Hardware Package |
|---|---|

Catalog No. 71-022-701 comes with the Outrigger Kit instead of the Track Assembly and Magnet Support Bar Assemblies.

The Grooving Kit is designed for flat work only such as deck plates. It is completely self-contained and easily moved as a single unit with a forklift or crane from workpiece to workpiece.

The Outrigger Kit is specifically designed to travel along the web plate on fabricated bridge girders used for railroad and highway bridges.

TITAN CARRIAGE / N6000 KITS

	(PART NO.)
Description	Arcair
Grooving Kit 120 VAC, 60 Hz	71-022-700
Outrigger Kit 120 VAC, 60 Hz	71-022-701

SUPPORT CABLES FOR N6000 KITS

Remote Pendant Assembly (PART NO.)	
Description	Arcair
10' (3M) Length	96-620-001
25' (8M) Length	96-620-003
50' (15M) Length	96-620-002

Interconnect Assembly (PART NO.)	
Description	Arcair
14" (356mm) Length	96-170-049
30" (762mm) Length	96-170-055
7' (2M) Length	96-170-057
15' (5M) Length	96-170-051
25' (8M) Length	96-170-052
50' (15M) Length	96-170-053

Power Cable Assembly (2 required) (PART NO.)	
Description	Arcair
4' (1.2M) Length	96-130-254
15' (5M) Length	96-130-256
25' (8M) Length	96-130-300
50' (15M) Length	96-130-301

Motor Cable Assembly (PART NO.)	
Description	Arcair
3' (1M) Length	96-130-257
12' (4M) Length	96-130-253
15' (5M) Length	96-130-303
25' (8M) Length	96-130-282
50' (15M) Length	96-130-274

Air Hose Assembly (PART NO.)	
Description	Arcair
4' (1.2M) Length	94-396-051
15' (5M) Length	94-396-049
25' (8M) Length	94-396-048

Mounting Plate and Hold Down Clamps (PART NO.)	
Description	Arcair
Mounting Plate	94-639-649
Hold Down Clamps	94-166-072

HORIZONTAL AND VERTICAL RACK BAR POSITIONERS

(PART NO.)	
Description	Arcair
Horizontal Rack Bar Positioner	71-099-073
Vertical Rack Bar Positioner	71-099-074

Automated Metal-Removal System Accessories

Arcair
Professional

CLIMBER® V-A TRACTOR

- Positive-locking gear engagement lever.
- Hardened drive gear to reduce maintenance.
- Solid state circuitry.
- Manual or Automatic Control. (Automatic control synchronizes the process and tractor motion.)
- Powered by a permanent magnet DC parallel shaft gear-motor, lubricated for life.

Climber® V-A Tractor

Packages includes: Climber V-A Tractor, Track Assembly (10ft./3M Long), Magnet Assemblies (5), Horizontal Rack Assembly, Vertical Adjustment Assembly, Cable Hose Clamp Assembly, and Mounting Plate Assembly.

A complete assembly for mounting on ferrous materials. This package gives portability and flexibility for out-of-position work.



CLIMBER® V-A TRACTOR PACKAGE

Description	(PART NO.)	
	Tractor Only	Tractor Package
120 VAC, 60 Hz 0-100 ipm (0-254 cm/min)	71-023-136	71-023-138
220 VAC, 50 Hz 0-100 ipm (0-254 cm/min)	71-023-137	71-023-139
Aluminum Track Section (3'/1M Length)	71-099-003	71-099-003
Aluminum Track Section (6'/2M Length)	71-099-002	71-099-002
Aluminum Track Section (10'/3M Length)	71-099-001	71-099-001
Magnet and Support Bar Assembly	71-099-004	71-099-004

NOTE: When using the travel system in the vertical, horizontal, and overhead positions, use of safety attachments is recommended to prevent operator injury or equipment damage.

NOTE: The Climber® V-A Package will carry the N6000 Torch Head and Automatic Controller. When mounting the Automatic Controller on the Climber V-A, choose the 3 ft. Motor Cable Assembly (Catalog No. 96-130-257).

TITAN® MACHINE CARRIAGE

The Arcair® Titan® Machine Carriage is designed for low maintenance and high performance in straight line operation, such as automated air carbon arc gouging, cutting or welding operations. Its three wheel design ensures maximum stability even on warped plates. The machine carriage is available in a speed range from 6-80 IPM (15,2-203,2 cm/min.). A manually operated clutch allows the drive to be disengaged for free wheeling to the start of the next operation.



TITAN® MACHINE CARRIAGE

Description	(PART NO.)
	Arcair
120 VAC, 60 Hz 6-80 ipm (15,2-203,2 cm/min)	71-022-501
Track Assembly (10'/3M Length)	71-022-502
Magnet and Support Bar Assembly (3 Required/Track Assembly)	71-022-504

ARCAIR® GOUGING ELECTRODES

- Excellent arc stability.
- Superior metal removal rate.
- Cool operation.
- Uniform diameter.
- Clean machine-like grooves or cuts.



ELECTRODE TYPES

DC Jetrod® Copperclad Jointed Electrodes

Eliminates stub loss and provides continuous electrode feed especially for semi-automatic and automatic torches. Machined at each end to provide male and female fittings.

Electrode Size	(PART NO.)
	Arcair
5/16" x 14" (7,9mm x 356mm)	24-052-003
3/8" x 14" (9,5mm x 356mm)	24-062-003
1/2" x 14" (12,7mm x 356mm)	24-082-003
5/8" x 14" (15,9mm x 356mm)	24-102-003
3/4" x 14" (19,1mm x 356mm)	24-122-003
3/8" x 17" (9,5mm x 432mm)	24-064-003
1/2" x 17" (12,7mm x 432mm)	24-084-003
5/8" x 17" (15,9mm x 432mm)	24-104-003
3/4" x 17" (19,1mm x 432mm)	24-124-003
1" x 17" (25,4mm x 432mm)	24-164-003

AC Copperclad Pointed Electrodes

Designed for use with AC power supplies. Rare earth material is added to stabilize the arc, improving the operating characteristics.

Electrode Size	(PART NO.)
	Arcair
3/16" x 12" (4,8mm x 305mm)	20-033-003
1/4" x 12" (6,4mm x 305mm)	20-043-003
3/8" x 12" (9,5mm x 305mm)	20-063-003

DC Copperclad Flat Electrodes

Specially designed for close tolerance metal removal. Excellent for removing weld crowns, repairing or making dies, removing welded dogs and scarfing billets.

Electrode Size	(PART NO.)
	Arcair
3/8" x 5/32" x 12" (9,5mm x 4,0mm x 305mm)	35-099-003
5/8" x 3/16" x 12" (15,9mm x 4,8mm x 305mm)	35-033-003

DC Copperclad Pointed Electrodes

A standard all purpose gouging electrode. Controlled copper coating improves conductivity providing more efficient, cooler, operation and helps maintain electrode diameter at the point of the arc.

Electrode Size	(PART NO.)
	Arcair
1/8" x 12" (3,2mm x 305mm)	22-023-003
5/32" x 12" (4,0mm x 305mm)	22-983-003
3/16" x 12" (4,8mm x 305mm)	22-033-003
1/4" x 12" (6,4mm x 305mm)	22-043-003
5/16" x 12" (7,9mm x 305mm)	22-053-003
3/8" x 12" (9,5mm x 305mm)	22-063-003
1/2" x 14" (12,7mm x 356mm)	22-082-003

DC Plain Pointed Electrodes

General purpose electrodes without the copper coating. Used on applications where copper is considered detrimental.

Electrode Size	(PART NO.)
	Arcair
5/32" x 12" (4,0mm x 305mm)	21-983-003
3/16" x 12" (4,8mm x 305mm)	21-033-003
1/4" x 12" (6,4mm x 305mm)	21-043-003
5/16" x 12" (7,9mm x 305mm)	21-053-003
3/8" x 12" (9,5mm x 305mm)	21-063-003
1/2" x 12" (12,7mm x 305mm)	21-083-003
5/8" x 12" (15,9mm x 305mm)	21-103-003

EXTREME™ Air Carbon Arc Gouging Torches

Arcair
Professional

Tri-Arc® Foundry Gouging Torches

Only Arcair® – the inventor of the original air carbon arc process and the industry leader for 50 years – could bring you the superb marriage of proven technology and improved design. The Tri-Arc Foundry Torch delivers the rugged reliability. The addition of superb support and complete technical backup makes Arcair the number one name in air carbon arc manual torches.



The original triple purpose torch is an essential part of the money-saving air carbon arc metal removal process, which melts metal with an electric arc, then blows it away with a jet of ordinary shop compressed air.

This torch is a highly efficient metal removal tool for all the heavy foundry applications . . . anywhere people want to save time and money. It speeds up padwashing, removes defects in castings and generally cleans castings of fins, nails and other unnecessary metal. This process is ideal for almost all metals – with little or no deformation – because the heat input is so low.

The Tri-Arc Torch offers one torch body that accepts three types of heads that can be tailored to fit your application best. Need several torch types for different applications? No problem the Tri-Arc offers different heads to fit in the same torch body to fit all your needs. No need for maintenance shops and distributors to stock several torches and confuse parts. Again the Tri-Arc gives you the reliable and rugged design users expect from Arcair Torches, just pick the best torch/head combination to fit your gouging applications.



Tri-Arc	Tri-Arc	Tri-Arc
Defect Removal Heads	Padwashing Heads	General Purpose Cleaning Heads
Accepts: Pointed or Jointed Carbons: 5/16" (6mm) to 3/4" (20mm) Maximum 2200 Amps Compressed air: Pressure: 80 psi (5.6kg/cm ²) Flow Rate: 36 cfm (1.0m ³ /min) Torch Weight: 2.4 lbs. (1.1kg)	Accepts: Pointed or Jointed Carbons: 1/2" (13mm) to 1" (25mm) Maximum 2200 Amps Compressed air: Pressure: 80 psi (5.6kg/cm ²) Flow Rate: 37 cfm (1.0m ³ /min) Torch Weight: 2.4 lbs. (1.1kg)	Accepts: Pointed or Jointed Carbons: 5/16" (6mm) to 3/4" (20mm) Maximum 2200 Amps Compressed air: Pressure: 80 psi(5.6kg/cm ²) Flow Rate: 40 cfm (1.1m ³ /min) Torch Weight: 2.4 lbs. (1.1kg)

Ordering Information

	(PART NO.)		(PART NO.)		(PART NO.)
No Heads in Torch		1/2" (13mm) Electrodes		1/2" (13mm) Electrodes	
Torch Only	02-991-411	Torch Only	02-991-413	Torch Only	02-991-416
Torch & 7' (2.1m) Cable	62-991-417	Torch & 7' (2.1m) Cable	62-991-419	Torch & 7' (2.1m) Cable	62-991-422
		Replacement Heads	94-378-286	Replacement Heads	94-378-267
		5/8" (16mm) Electrodes		5/8" (16mm) Electrodes	
		Torch Only	02-991-414	Torch Only	02-991-417
		Torch & 7' (2.1m) Cable	62-991-420	Torch & 7' (2.1m) Cable	62-991-423
		Replacement Heads	94-378-289	Replacement Heads	94-378-270
5/16" (6mm) to 3/4" (19mm)		3/4" (19mm) Electrodes		3/4" (19mm) Electrodes	
Torch Only	02-991-425	Torch Only	02-991-415	Torch Only	02-991-418
Torch & 7' (2.1m) Cable	62-991-435	Torch & 7' (2.1m) Cable	62-991-421	Torch & 7' (2.1m) Cable	62-991-424
Replacement Heads	94-378-370	Replacement Heads	94-378-283	Replacement Heads	94-378-273
				1" (25mm) Electrodes	
				Torch Only	02-991-424
				Replacement Heads	94-378-344

EXTREME™ Air Carbon Arc Gouging Torches

Tri-Arc High Flow/Air Always On | Foundry Gouging Torch

Guaranteed Best

FEATURE	BENEFIT	FEATURE	BENEFIT
No Torch Air Valve	Maximize air flow for increase metal removal	Optimum Weight	Optimum cable and torch weight to minimize fatigue
340° Swivel Cable	Less cable twist Less strain on operator	High Quality Cable Hose	Best quality cable hose offers high heat and abrasion resistance
Positive Grip Handle	Greater operator feel and ease in positioning the torch	Rugged Construction	Overall rugged construction for the harsh environment

GENERAL PURPOSE CLEANING HEADS

Accepts:
Pointed or Jointed Carbons:
5/16" (6mm) to 3/4" (20mm)

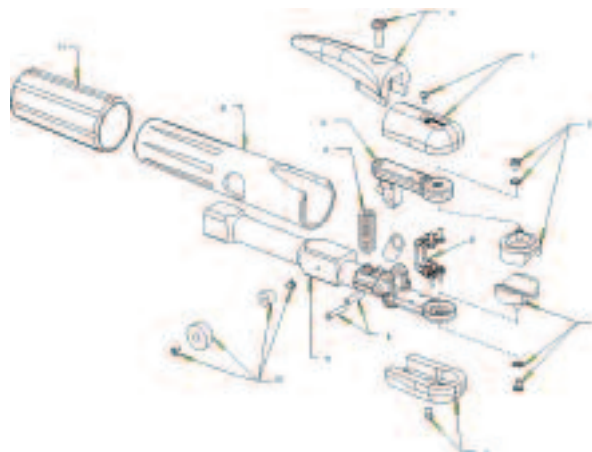
Maximum 2200 Amps
Torch Weight: 2.4 lbs. (1.1 kgs.)

Compressed air:
Pressure: 80 psi (5.6 kg/cm²)
Flow Rate: 45 cfm (1.3 m³/min)

NO HEADS IN TORCH		TORCH BODY & GENERAL PURPOSE HEADS		TORCH W/GENERAL PURPOSE HEADS & XHD CABLE	
Torch Only	02-991-426	5/8" General Purpose Torch Only 3/4" General Purpose Torch Only	02-991-428 02-991-429	5/8" Torch & 7' (2.1m) Cable	62-991-438
		5/8' Replacement Heads 3/4' Replacement Heads	94-378-270 94-378-273	3/4" Torch & 7' (2.1m) Cable	62-991-439

Torch Assembly Replacement Parts

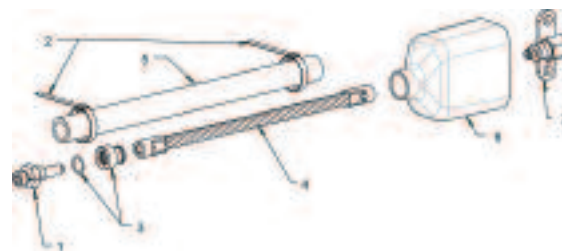
Item	Description	Tri-Arc No Valve Torch
1	Insulators & Screws	94-433-118
2	Heads & Screws	SEE PAGE 66
3	Upper Arm	94-433-118
4	Spring	94-800-088
5	Torch Body	94-103-237
6	Handle	94-370-079
7	Lever & Screw	94-476-034
8	Hinge Pin	94-632-063
9	Jumper Wire	96-458-018
10	Handle Buttons Kit	94-123-017
11	Handle Sleeve	94-784-045



All Tri-Arc High Flow Torches come from the factory with the Tri-Arc EXHD Cable, Part Number 74-161-907 as the standard cable.

Cable Assembly Replacement Parts

Item	Description	Tri-Arc Cable	Tri-Arc EXHD Cable
	7' Cable Assembly	74-143-607	74-161-907
	10' Cable Assembly	74-143-610	N/A
NS	Front Cable Boot	N/A	94-105-020
1	Male Connector	94-170-169	94-169-176
2	Clamp (2 Reqd.)	98-167-012	98-167-012
3	Swivel Sleeve	94-784-050	94-784-078
4	7 Ft.(2.1M) Conductor	96-130-063	96-130-286
4	10 Ft.(3M) Conductor	96-130-126	N/A
5	7 Ft.(2.1M) Cover	94-171-006	94-171-284
5	10 Ft.(3M) Cover	94-171-140	N/A
6	Insulating Boot	94-105-017	94-105-019
7	Female Connector	94-170-095	94-170-174



SLICE™ Exothermic Cutting Systems**Arcair®**
Professional

Unlike any other cutting process used today, the Arcair® SLICE® systems can cut, burn or pierce virtually any metallic, non-metallic or composite material. Our SLICE® exothermic torch cuts right through hard-to-cut materials such as mild, stainless and alloy steels, cast iron, aluminum, magnesium and other non-ferrous metals, slag and refractory materials, and concrete or brick. Even if it's caked with rust, mud or other corrosion, SLICE® will cut through anything. There's never been a more versatile cutting tool!

SLICE® UTILITY PACK**Part No. 63-991-026**

The SLICE® Utility Pack permits you to use the exothermic cutting process to cut virtually any metallic, non-metallic or composite material. The package has the basic items needed to do a cutting job packed in a rugged tool box. Just supply oxygen and an ignition source and you are ready to cut.

**SLICE® INDUSTRIAL PACK****Part No. 63-991-021**

The Industrial SLICE® Pack provides the versatility of exothermic cutting and accommodates a larger oxygen cylinder to extend your cutting time. The industrial cart is capable of carrying a 9" (229mm) diameter cylinder. The Industrial SLICE® Pack includes SLICE® torch and striker assemblies with 10 ft./3M oxygen hose and power cables.

**SLICE® BATTERY PACK****Part No. 63-991-003**

The SLICE® Battery Pack comes in a rugged tool box. As with the Utility Pack, you get all the basic items needed to do a cutting job such as torch, striker and rods. Also included in the Battery Pack is a 12-Volt rechargeable SLICE® Battery Box Assembly.





SLICE® CORDLESS STRIKER PACK

Part No. 63-991-032

The SLICE Cordless Striker Pack uses two small lead-acid batteries to supply a current surge sufficient enough to ignite both the 1/4" (6,4mm) and 3/8" (9,5mm) bare SLICE Cutting Rods. It includes one ignitor and charger. Available in 120 volt, AC only.



SLICE® COMPLETE PACK

Part No. 63-991-002

The SLICE Complete Pack comes in an aluminum carrying case with everything needed to quickly complete an exothermic cutting job. This model is well suited to the emergency type cutting situations where seconds count. With this unit you get the torch, rods, striker, 12-volt battery with charger, 6" (152mm) collet extension and shield, regulator and an empty 55 cubic foot oxygen bottle.



SLICE EXOTHERMIC CUTTING RODS

SLICE exothermic cutting rods are designed specifically for use with SLICE cutting systems.

Size	(PART NO.)	
	Flux Coated	Uncoated
1/4" x 22" (7 x 559mm) 25 pieces	42-049-002	43-049-002
1/4" x 22" (7 x 559mm) 100 pieces	42-049-003	43-049-003
1/4" x 44" (7 x 1118mm) 25 pieces	N/A	43-049-005
3/8" x 18" (10 x 457mm) 50 pieces	42-049-005	43-049-007
3/8" x 36" (10 x 914mm) 25 pieces	N/A	43-049-009

NOTES

Chemicals & Underwater Products



Protex[®] Original Anti-Spatter

Arcair's original anti-spatter compound formula is still the best choice for all heavy-duty high heat applications. The arc stabilizing base material used in Protex Original allows it to withstand temperatures of approximately 1600°F.

	(PART NO.)
Container Size	Arcair
1 Gallon/3,8L (case of 4)	53-011-000
5 Gallon/19L	53-015-000
55 Gallon/208L Drum	53-018-000



Protex[®] Extra Anti-Spatter

With Protex Extra anti-spatter from Arcair, you are ready to gouge or weld in one minute or less. This can be as much as ten times faster than ordinary non-toxic anti-spatters. Safe and nonflammable.

	(PART NO.)
Container Size	Arcair
7 oz./207ML (case of 12)	53-007-500
24 oz./710ML (case of 12)	53-024-500
1 gallon/3,8L (case of 4)	53-014-500
5 Gallon/19L	53-015-500
55 Gallon/208L Drum	53-018-500

Protex[®] Clear Anti-Spatter

Protex Clear not only protects surfaces from spatter, slag and scale but dries to a clear tough finish. Because of its latex base, Protex Clear will provide a barrier that works for months to shield work surfaces and fixtures from oxides and rust.

	(PART NO.)
Container Size	Arcair
1 Gallon/3,8L (case of 4)	53-014-201
5 Gallon/19L	53-015-201
55 Gallon/208L Drum	53-018-201

Protex[®] Plus Anti-Spatter

Protex Plus is an aerosol anti-spatter that contains no chlorinated solvents, fluorocarbons or silicones.

	(PART NO.)
Container Size	Arcair
16 oz./473ML Can (case of 12)	57-021-106

Protex[®] Tip-Dip Anti-Spatter

Protex Tip-Dip gel provides protection from spatter build-up on MIG gun nozzles and contact tips. When the nozzle of the MIG gun is warm, simply dip into the gel.

	(PART NO.)
Container Size	Arcair
16 oz./454GR Jar (case of 12)	57-021-105

Protex[®] Alclean Aluminum Cleaner

Quickly clean oxides, dirt and grime from aluminum and aluminum alloys with Protex Alclean aluminum cleaner. In most cases, the mild acid in Protex Alclean takes only minutes to work.*

	(PART NO.)
Container Size	Arcair
1 Quart/946ML (case of 12)	57-021-200
1 Gallon/3,8L (case of 4)	57-014-000

Protex[®] Zinc Rich Cold Galvanizing

Protex Zinc Rich Cold Galvanizing compound uses the "sacrificial anode" principal to provide corrosion protection for the base metal. The zinc content in Zinc Rich sacrifices itself to any metal higher (nobler) than zinc in the periodic table of elements such as iron.

	(PART NO.)
Container Size	Arcair
16 oz./473ML Can (case of 12)	57-031-002

* May turn 2000 Series aluminum black.

SEA TORCH® COMBINATION TORCH

Length: 8-3/4" (22,2 cm).

Weight: 4.5 lbs. (2,0 kg) with cable.

Equipped with 10 ft. (3M) cable which can be disconnected from the torch.

- Underwater cutting and welding torch with a one piece body construction.
- Fully insulated electrically for safety in normal operation.
- Bright orange for high visibility to the diver.



	(PART NO.)
Description	Arcair
Sea Torch Complete (5/16" / 7,9mm collet chucks)	14-050-124
Sea Torch Complete (3/8" / 9,5mm collet chucks)	14-050-126



ARCWATER® II Combination Torch

Length: 9-3/4" (24,8 cm).

Weight: 5.5 lbs. (2,5 kg) with cable.

Equipped with 10 ft. (3M) heavy-duty cable.

- Designed to gouge or cut steel, stainless steel and other metals.
- May be converted to an underwater welding torch by simply changing collets.
- Oxygen free, virtually eliminating the risk of hydrogen gas pocket explosions.

	(PART NO.)
Description	Arcair
Arcwater II Torch (5/16" / 7,9mm collet chuck)	14-050-127

SEA-STINGER® II UNDERWATER ELECTRODE HOLDER

Length: 6" (15,2 cm).

Weight: 3.65 lbs. (1,7 kg).

- Lightweight, durable and easy to use electrode holder.
- Replaceable cable and internal changes to extend service life.
- Accepts 1/8" (3,2 mm), 5/32" (4,0 mm) and 3/16" (4,8 mm) diameter welding electrodes.



	(PART NO.)
Description	Arcair
Sea-Stinger II Holder	14-050-128

Sea-Weld® Welding Electrodes

Catalog No. see below (Yellow)
 Diameters: 1/8" (3,2 mm) | 5/32" (4,0 mm) | 3/16" (4,8 mm)
 Length: 14" (356 mm) | 14" (356 mm) | 18" (458 mm)

For structural fabrication and repairs requiring underwater wet welding.

			(PART NO.)
Size	Current Amperes	Burn Off Time (sec.) 12" (305 mm)	Arcair
1/8" 3,2mm	150-180	40-46	42-024-002
5/32" 4,0mm	170-210	44-56	42-984-004
3/16" 4,8mm	190-230	59-66	42-034-007



SEA-JET® Cutting Electrodes

Part No. 42-066-006 (Red)
 Diameter: 3/8" (9,5 mm) Length: 18" (458 mm)

Underwater exothermic Sea Jet cutting electrodes will burn ferrous and melt nonferrous materials such as concrete, rock, barnacles and other sea growth.



SEA DRAGON™ Cutting Rods

Part No. 42-075-005 (Orange)
 Diameter: 3/8" (9,5 mm) Length: 18" (458 mm)

Burns most materials encountered in underwater cutting jobs.



SEA-CUT® I Cutting Electrodes

Part No. 42-059-007 (Blue)
 Diameter: Outside 5/16" (8 mm)
 Bore Hole .120" (3 mm)
 Length: 14" (356 mm)

Tubular steel design used for oxygen-arc cutting.



TUFF COTE® Cutting Electrodes

Part No. 42-059-008 (White)
 Diameter: Outside 5/16" (8 mm)
 Bore Hole .120" (3 mm)
 Length: 14" (356 mm)

Coated with an arc stabilizing flux coating, then waterproofed.



ARCWATER® Gouging Electrodes

Part No. 42-059-006 (White)
 Diameter: 5/16" (7,9 mm)
 Length: 9" (229 mm)

Copper coated carbon/graphite electrodes, especially made for the Arcwater process. Waterproofed with a white coating.



ARCAIR[®] SEA-PAK[®] POWER-PLUS[™] SYSTEM

Catalog No. 73-101-024 Complete Package

Height: 65" (155 cm) Width: 53" (135 cm) Length: 72" (183 cm)

The SEA-PAK 400-A Power System is a rugged, compact underwater cutting and welding power system complete with all the equipment and gear necessary for the welder/diver. SEA-PAK eliminates time spent gathering and handling individual components.

The Power Supply is a 400 ampere, DC constant current machine, 100% duty cycle at 40 arc volts. A 10 KVA, 120 volt single phase, AC 50/60 Hertz auxiliary power outlet is provided. The diesel driven machine has a fuel capacity of 23 gallons (87 liters).

Arcair SEA-PAK has a five station oxygen manifold and space for five 277 cu. ft. (7.8M³) capacity high pressure oxygen cylinders. It is equipped with individual shut-off valves to each cylinder, and includes a two stage, high-pressure, high-flow regulator. Removable safety bars in front of each oxygen cylinder prevent tipping during shipment or rough weather. The frame is a rugged 3" (7.6 cm) heavy wall square tube design welded into a single unit for maximum strength to handle stress from crane or forklift transportation as well as aboard ships.

The Complete SEA-PAK Power System package is designed for maximum safety. The 2 pole, single-throw knife switch together with all electrical fittings ensure against electrical faults. The plexiglass enclosure of the knife switch meets all OSHA requirements. The power supply is designed so that polarity cannot be changed except by changing cable leads. Arcair's Sea Torch[®] Combination Torch and Sea-Stinger[®] II Welding Electrode Holder completes the package which is designed for safety, ruggedness and operator comfort.

SEA-PAK POWER-PLUS[™] SYSTEM INCLUDES

- Heavy wall all-welded frame.
- Five cylinder rack with individual clamps for positive holding and easy replacement.
- Arcair Sea-Torch Combination Torch.
- 5-Station heavy-duty manifold with individual valves and pigtails.
- Power Source - 400 ampere rated at 40 volts, 100% duty cycle, constant current, DC output. Auxiliary power outlet 10 KVA, 120 volt single phase, AC 50/60 Hz (Diesel Driven).
- Heavy duty tool box.



NOTES

NOTES

NOTES

NOTES

U.S. Customer Care: 800-426-1888 / FAX 800-535-0557 • International Customer Care: 905-827-9777 / FAX 905-827-9797
www.tweco.com



WORLD HEADQUARTERS: 16052 Swingley Ridge Road, Suite 300 • St. Louis, Missouri 63017 U.S.A.

A Global Cutting & Welding Market Leader™

THE AMERICAS

Denton, TX USA
U.S. Customer Care
Ph: (1) 800-426-1888
Fax: (1) 800-535-0557

Miami, FL USA
Sales Office, Latin America
Ph: (1) 954-727-8371
Fax: (1) 954-727-8376

Oakville, Ontario, Canada
International Customer Care
Ph: (1) 905-827-9777
Fax: (1) 905-827-9797

West Lebanon, NH USA
Customer Care, Plasma
Ph: (1) 800-752-7621
Fax: (1) 800-221-4401

Rio de Janeiro, Brazil
Customer Care
Ph: (55) 21-2485-8998
Fax: (55) 21-2485-8866

EUROPE

Chorley, United Kingdom
Customer Care
Ph: (44) 1257-261755
Fax: (44) 1257-224800

Milan, Italy
Sales Office
Ph: (39) 0236546801
Fax: (39) 0236546840

ASIA/PACIFIC

Cikarang, Indonesia
Customer Care
Ph: 62 21+ 8983-0011 / 0012
Fax: 62 21+ 893-6067

Osaka, Japan
Sales Office
Ph: 816-4809-8411
Fax: 816-4809-8412

Melbourne, Australia
Customer Care:
Ph: 1300-654-674
Fax: 613+ 9474-7391

International:
Ph: 613+ 9474-7508
Fax: 613+ 9474-7488

Rawang, Malaysia
Customer Care
Ph: 603+ 6092-2988
Fax: 603+ 6092-1085

Shanghai, China
Sales Office
Ph: 86 21+ 6280-1273
Fax: 86 21+ 3226-0955

Singapore
Sales Office
Ph: 65+ 6832-8066
Fax: 65+ 6763-5812