



ARCHITECTURAL DOOR HARDWARE HINGE CATALOG

January 1, 2017 v3

West Coast Office
(800) 544-4422

East Coast Office
(800) 225-6737

intldoorclosers.com





Index

HINGES

- CONTINUOUS HINGES
 - ALUMINUM GEARED HINGES..... 1-3
 - ALUMINUM GEARED HINGE CROSS REFERENCE CHART4
 - STAINLESS STEEL CONTINUOUS HINGES..... 5-7
 - STAINLESS STEEL HINGES CROSS REFERENCE CHART.....9
- EDGE GUARDS10
- ARCHITECTURAL HINGES11
- POWER TRANSFER HINGES12

SPECIAL FINISHES

- Standard Colors13



HEAVY DUTY CONTINUOUS HINGES

ALUMINUM CONCEALED/MORTISE GEARED HINGES

CONCEALED/MORTISE LEAF HINGES

- Any Door Material
- Heavy Duty for high frequency 1 3/4" doors or heavy medium frequency doors up to 450lbs.
- 117FM (Heavy Duty), 217FM (Heavy Duty)

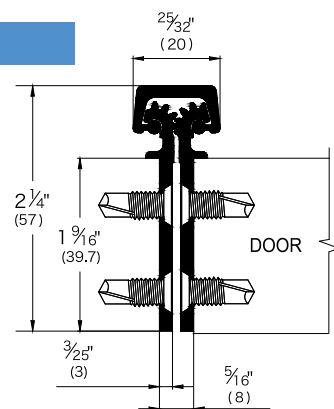


| MODEL | | LENGTH | | SCREW COUNT | | CLEARANCE |
|--------------------|-------------------|--------|-------|-------------|------|---|
| C (Clear Anodized) | D (Duro Anodized) | IN | CM | DOOR | JAMB | |
| 117FMC-83 | 117FMD-83 | 83 | 210.8 | 19 | 19 | 5/16" (8mm) hinge side plus standard lockside clearance |
| 117FMC-95 | 117FMD-95 | 95 | 241.3 | 21 | 21 | |
| 117FMC-120 | 117FMD-120 | 120 | 304.8 | 27 | 27 | |
| 217FMC-83 | 217FMD-83 | 83 | 210.8 | 19 | 19 | |
| 217FMC-95 | 217FMD-95 | 95 | 241.3 | 21 | 21 | |
| 217FMC-120 | 217FMD-120 | 120 | 304.8 | 27 | 27 | |

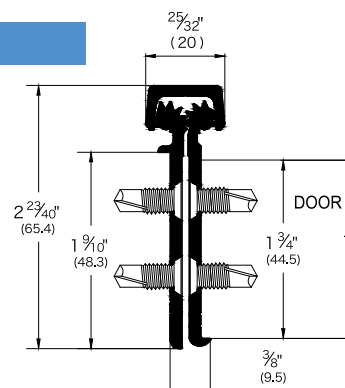
*Note: First 3 numbers = (Product #), FM = (Full Mortise), C or D = (Finish), 83, 95 & 120 = (Length)

| | |
|--|---|
| FASTENERS: (Self-Tapping Screws) | <ul style="list-style-type: none"> • All fasteners as No. 12-24 x 1/16" Type C, FHUC • Heavy Duty Hinges - 10 required for each leaf |
| LENGTH OPTIONS: | 83", 95" & 120" |
| DOOR REINFORCEMENT: | <ul style="list-style-type: none"> • None needed to 200 lbs • Use 16 gauge channel over 200 lbs |
| FRAME REINFORCEMENT: | <ul style="list-style-type: none"> • None needed to 200 lbs • Use 16 gauge channel over 200 lbs |
| FIRE RATING: | Up to 3 Hours |
| SPECIAL FEATURES: | <ul style="list-style-type: none"> • For new construction • For renovation with new door and / or frames • No mortising of doors or frames required • Will cover hinge cut outs in frames • Flush mount no inset • Frame and door leaf alignment ribs for proper hinge location |
| STANDARD FINISHES: | |
| <ul style="list-style-type: none"> • C (Clear Anodized Aluminum), D (Duro Anodized Aluminum) | |
| SPECIAL ORDER FINISHES: | |
| <ul style="list-style-type: none"> • PW (Painted White), G (Gold Anodized Aluminum), BL (Black Anodized Aluminum) | |

117FM



217FM



International Door Closers, Inc.

COPYRIGHT 2017 INTERNATIONAL DOOR CLOSERS, INC

West: 800-544-4422 • East: 800-225-6737

www.intldoorclosers.com



HEAVY DUTY CONTINUOUS HINGES

ALUMINUM FULL SURFACE GEARED HINGES



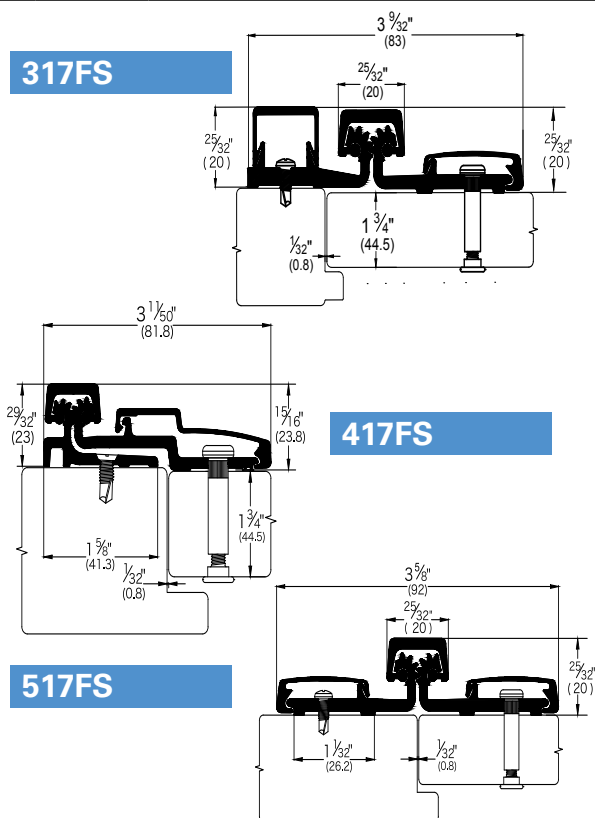
FULL SURFACE HINGES

- **Any Door Material**
- **Heavy Duty** for high frequency 1 3/4" doors or heavy medium frequency doors up to 450lbs.
- **317FS** (Heavy Duty), **417FS** (Heavy Duty), **517FS** (Heavy Duty)

| MODEL | | LENGTH | | SCREW COUNT | | CLEARANCE |
|--------------------|-------------------|--------|-------|-------------|------|--|
| C (Clear Anodized) | D (Duro Anodized) | IN | CM | DOOR | JAMB | |
| 317FSC-83 | 317FSD-83 | 83 | 210.8 | 19 | 19 | 1/32" (1mm) minimum recommended for hinge side plus standard lockside clearance |
| 317FSC-95 | 317FSD-95 | 95 | 241.3 | 20 | 20 | |
| 317FSC-120 | 317FSD-120 | 120 | 304.8 | 26 | 26 | |
| 417FSC-83 | 417FSD-83 | 83 | 210.8 | 19 | 19 | 1/32" (1mm) minimum recommended for hinge side plus standard lockside clearance 1 5/8" (41mm) minimum frame face required plus 3/16" (5mm) rotational clearance |
| 417FSC-95 | 417FSD-95 | 95 | 241.3 | 20 | 20 | |
| 417FSC-120 | 417FSD-120 | 120 | 304.8 | 26 | 26 | |
| 517FSC-83 | 517FSD-83 | 83 | 210.8 | 19 | 19 | 1/32" (1mm) minimum required between doors |
| 517FSC-95 | 517FSD-95 | 95 | 241.3 | 20 | 20 | |
| 517FSC-120 | 517FSD-120 | 120 | 304.8 | 26 | 26 | |

*Note: First 3 numbers = (Product #), FS = (Full Surface), C or D = (Finish), 83, 95 & 120 = (Length)

| | |
|--|---|
| FASTENERS: (Self-Tapping Screws) | FRAME PORTION <ul style="list-style-type: none"> • All fasteners as No. 12-24 x 1/16" Type C, FHUC - Heavy Duty Hinges - 10 required for each leaf DOOR PORTION <ul style="list-style-type: none"> • Thurbolt 1/4-20 x 1 5/8" PCH - Heavy Duty Hinges - 6 required for each leaf • Shoulder bolt 1/4 - 20 x 1" PCH - Heavy Duty Hinges - 6 required • Pan Head Self Drilling No. 12 x 3/4" - Heavy Duty Hinges - 4 required |
| LENGTH OPTIONS: | 83", 95" & 120" |
| DOOR REINFORCEMENT: | <ul style="list-style-type: none"> • None needed |
| FRAME REINFORCEMENT: | <ul style="list-style-type: none"> • None needed to 200 lbs • Use 16 gauge channel over 200 lbs |
| FIRE RATING: | Up to 3 Hours |
| SPECIAL FEATURES: | <ul style="list-style-type: none"> • Replacement for existing doors and frames • 7/8" minimum frame • 1/16" inset |
| STANDARD FINISHES: | <ul style="list-style-type: none"> • C (Clear Anodized Aluminum), D (Duro Anodized Aluminum) |
| SPECIAL ORDER FINISHES: | <ul style="list-style-type: none"> • PW (Painted White), G (Gold Anodized Aluminum), BL (Black Anodized Aluminum) |



International Door Closers, Inc.

COPYRIGHT 2017 INTERNATIONAL DOOR CLOSERS, INC

West: 800-544-4422 • East: 800-225-6737

www.intldoorclosers.com



HEAVY DUTY CONTINUOUS HINGES

ALUMINUM HALF SURFACE GEARED HINGES

HALF SURFACE HINGES

- Any Door Material
- **Heavy Duty** for high frequency 1 3/4" doors or heavy medium frequency doors up to 450lbs.
- **617HS** (Heavy Duty)

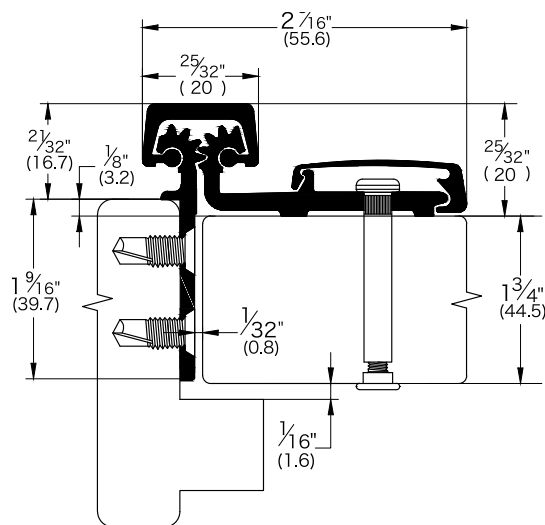


| MODEL | | LENGTH | | SCREW COUNT | | CLEARANCE |
|--------------------|-------------------|--------|-------|-------------|------|---|
| C (Clear Anodized) | D (Duro Anodized) | IN | CM | DOOR | JAMB | |
| 617HSC-83 | 617HSD-83 | 83 | 210.8 | 19 | 19 | 5/16" (8mm) hinge side plus standard lockside clearance |
| 617HSC-95 | 617HSD-95 | 95 | 241.3 | 20 | 20 | |
| 617HSC-120 | 617HSD-120 | 120 | 304.8 | 26 | 26 | |

*Note: First 3 numbers = (Product #), FS = (Half Surface), C or D = (Finish), 83, 95 & 120 = (Length)

| | |
|--|--|
| FASTENERS: (Self-Tapping Screws) | FRAME PORTION <ul style="list-style-type: none"> • All fasteners as No. 12-24 x 1/16" Type C, FHUC - Heavy Duty Hinges - 10 required for each leaf DOOR PORTION <ul style="list-style-type: none"> • Thru-bolt 1/4-20 x 1 5/8" PCH - Heavy Duty Hinges - 6 required for each leaf • Shoulder bolt 1/4 - 20 x 1" PCH - Heavy Duty Hinges - 6 required • Pan Head Self Drilling No. 12 x 3/4" - Heavy Duty Hinges - 4 required |
| LENGTH OPTIONS: | 83", 95" & 120" |
| DOOR REINFORCEMENT: | <ul style="list-style-type: none"> • None needed |
| FRAME REINFORCEMENT: | <ul style="list-style-type: none"> • None needed to 200 lbs • Use 16 gauge channel over 200 lbs |
| FIRE RATING: | Up to 3 Hours |
| SPECIAL FEATURES: | <ul style="list-style-type: none"> • For new construction • For renovation with new door and / or frames • No mortising of doors or frames required • Will cover hinge cut outs in frames • Flush mount no inset • Frame and door leaf alignment ribs for proper hinge location |
| STANDARD FINISHES: | <ul style="list-style-type: none"> • C (Clear Anodized Aluminum), D (Duro Anodized Aluminum) |
| SPECIAL ORDER FINISHES: | <ul style="list-style-type: none"> • PW (Painted White), G (Gold Anodized Aluminum), BL (Black Anodized Aluminum) |

617HS



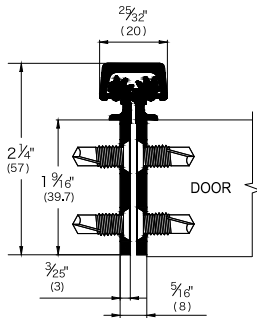


CROSS REFERENCE CHART

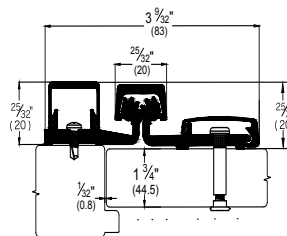
CONTINUOUS GEAR HINGES

| CONTINUOUS GEAR HINGES CROSS REFERENCE CHART | | | | | | | |
|--|-------|-----------|-----------|---------|-----------|---------|-------|
| TYPE | IDC | ROTON | SELECT | PEMKO | MCKINNEY | STANLEY | IVES |
| Full Concealed | 117FM | 780-111HD | SL11SD/HD | FMSLFHD | MCK-12-HD | 661HD | 112HD |
| Full Concealed Mortise Leaf | 217FM | 780-124HD | SL24SD/HD | FMHD | MCK-25HD | 662HD | 224HD |
| Full Surface | 317FS | 780-157HD | SL57SD/HD | FSCPHD | MCK-58HD | 664HD | 157XY |
| Full Surface | 417FS | 780-210HD | SL21SD/HD | FSHD | - | 665HD | 210XY |
| Full Surface | 517FS | 780-057HD | - | - | - | - | 936HD |
| Half Surface | 617HS | 780-053HD | SL54HD | HSHD | MCK-54HD | 663HD | 054XY |

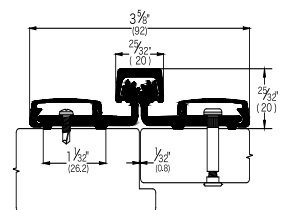
117FM



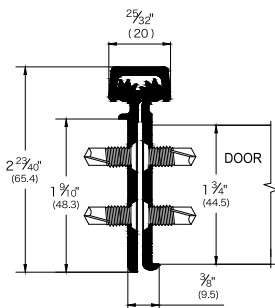
317FS



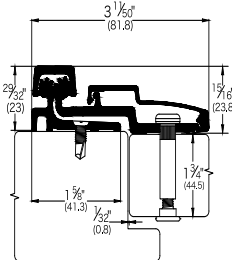
517FS



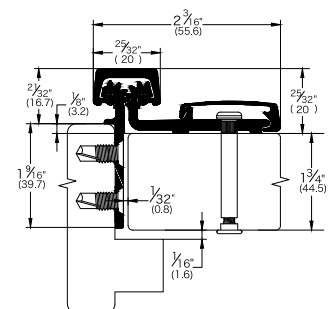
217FM



417FS



617HS





STAINLESS STEEL CONTINUOUS HINGES



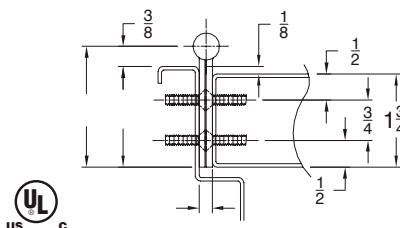
IDC stainless steel hinges are full height piano hinges that provide support for the full height of the door.

- For doors up to 600 lbs.
- 4'0" maximum door width
- Hinge leafs are 14 Ga., 304 stainless steel
- Pin is 1/4 diameter 304 stainless steel, barrel .438 diameter
- Knuckles are 2" long with Delrin TM bearings between each
- Hinges -Nominal Sizes 7' (83-1/8"), 8' (95") & 10' (118-3/4") are non-handed. 6'8" (78-3/4") & 7'2" (85") are handed
- Special lengths available
- Standard finish-US32D
- Self-drilling screws standard, security screws available (wood or machine)
- Fire Rating-UL and ULC fire Listed
 - 3 hours-hollow metal door
 - 90 min.-hollow metal and composite core wood fire door
 - 20 min.-wood door
- Custom Cutouts available

All dimensions in () are actual hinge lengths.

IDCA500 EDGE MOUNT CONCEALED

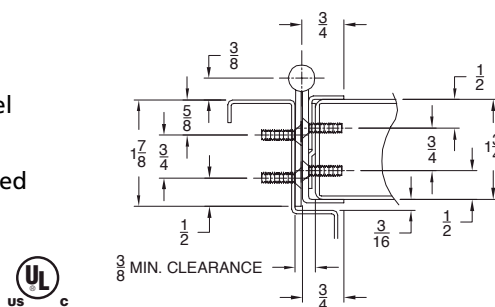
- For beveled or square edged doors
- For 1-3/4" doors
- For high traffic, high abuse doors
- Heavy-duty 14 Gauge 304 Stainless Steel
- US32D Satin Stainless Steel
- No exposed fasteners when door is closed
- Self drilling screws
- Supports door weights up to 600 lbs. 4'0" Maximum door width
- Electrical modifications available
- UL & ULC fire listed



IDCA500 Full Concealed Edge Mount

IDCA505 EDGE GUARD

- Concealed
- For square edged doors
- For 1-3/4" doors
- For high traffic, high abuse doors
- Heavy-Duty 14 Gauge 304 Stainless Steel
- US32D Satin Stainless Steel
- No exposed fasteners when door is closed
- Self drilling screws
- Supports door weights up to 600 lbs.
- 4'0" Maximum door width
- Door edge lip on both faces of door
- Protects door edge
- Adjustable to accommodate slight variances in door thickness
- For specialty door – Use with A538CS or A538CB
- Electrical modifications available
- UL & ULC fire listed



IDCA505 Full Concealed Edge Guard

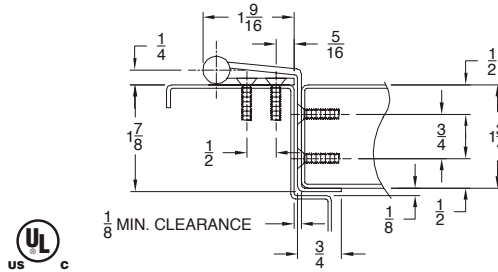
International Door Closers, Inc.

COPYRIGHT 2017 INTERNATIONAL DOOR CLOSERS, INC

West: 800-544-4422 • East: 800-225-6737
www.intldoorclosers.com

IDCA511 SWING CLEAR WITH EDGE GUARD

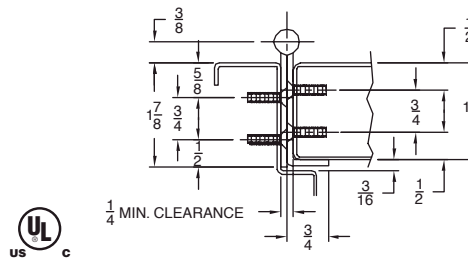
- Concealed
- Flush mount
- For square edged doors
- For 1-3/4" doors
- For high traffic, high abuse doors
- Heavy-Duty 14 Gauge 304 Stainless Steel
- US32D Satin Stainless Steel
- Door edge lip on stop side only
- Self drilling screws
- Supports door weights up to 600 lbs.
- 4'0" Maximum door width
- No exposed fasteners when door is closed
- Meets ADA requirements
- UL & ULC fire listed



IDCA511 Full Concealed Swing Clear With Edge Guard

IDCA515 WITH EDGE GUARD

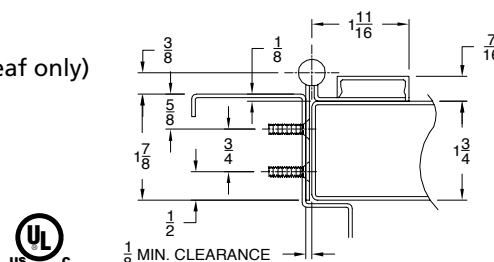
- Concealed
- For square edged doors
- For 1-3/4" doors
- For high traffic, high abuse doors
- Heavy-Duty 14 Gauge 304 Stainless Steel
- US32D Satin Stainless Steel
- Door edge lip on stop side only
- Self drilling screws
- Supports door weights up to 600 lbs.
- 4'0" Maximum door width
- No exposed fasteners when door is closed
- UL & ULC fire listed



IDCA515 Full Concealed With Edge Guard

HALF SURFACE IDCA503 SURFACE MOUNTED DOOR LEAF

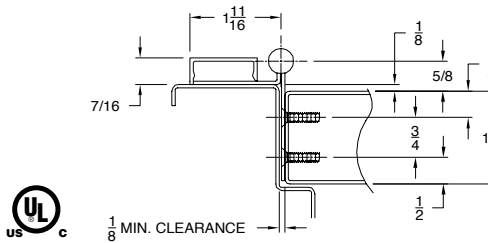
- For beveled or square edged doors
- For 1-3/4" doors
- For high traffic, high abuse doors
- Heavy-Duty 14 Gauge 304 Stainless Steel
- US32D Satin Stainless Steel
- Self drilling screws
- Supports door weights up to 600 lbs.
- 4'0" Maximum door width
- Decorative fastener cover
- Current transfer prep available (frame leaf only)
- UL & ULC fire listed



IDCA503 Half Surface

IDCA504 SURFACE MOUNTED FRAME LEAF

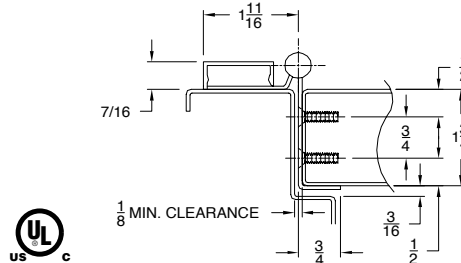
- For beveled or square edged doors
- For 1-3/4" doors
- For high traffic, high abuse doors
- Heavy-Duty 14 Gauge 304 Stainless Steel
- US32D Satin Stainless Steel
- Self drilling screws
- Supports door weights up to 600 lbs.
- 4'0" Maximum door width
- Decorative fastener cover
- Current transfer prep available (door leaf only)
- UL & ULC fire listed



IDCA504 Surface Mounted

IDCA506 WITH EDGE GUARD

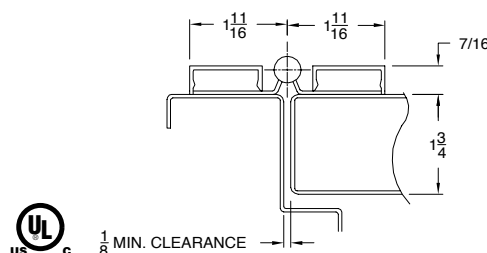
- For square edged doors
- For 1-3/4" doors
- For high traffic, high abuse doors
- Heavy-Duty 14 Gauge 304 Stainless Steel
- US32D Satin Stainless Steel
- No exposed fasteners when door is closed
- Self drilling screws
- Supports door weights up to 600 lbs.
- 4'0" Maximum door width
- Door edge lip on stop side
- Protects door edge
- Decorative fastener cover
- Current transfer prep available (door leaf only)
- UL & ULC fire listed



IDCA506 Half Surface With Edge Guard

FULL SURFACE IDCA502 FULL SURFACE/FLUSH MOUNT

- For beveled or square edged doors
- For 1-3/4" doors
- For high traffic, high abuse doors
- Heavy-Duty 14 Gauge 304 Stainless Steel
- US32D Satin Stainless Steel
- No exposed fasteners when door is closed
- Self drilling screws
- Supports door weights up to 600 lbs.
- 4'0" Maximum door width
- Decorative Fastener Covers
- UL & ULC fire listed

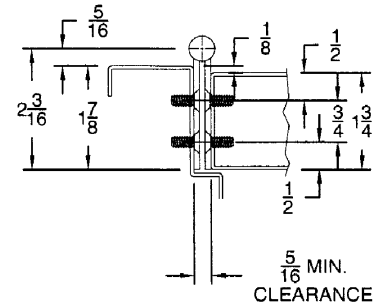


IDCA502 Full Surface Flush Mount

PIN AND BARREL CONTINUOUS HINGES IDCA5500

12 GAUGE STAINLESS STEEL

- Full Mortise Edge Mount
- Used on high-traffic, high-abuse doors
- Heavy-Duty 12 Gauge 304 Stainless Steel
- US32D Satin Stainless Steel
- No exposed Fasteners when door is closed
- Supplied with 12-24x1/2 Phillips Undercut Flat Head Machine Screw S.S.
- Supports door weights up to 900 lbs.
- 4'-0" Maximum door width
- Nominal Sizes 7', 8' & 10' are non-handed
- 6'8" & 7'2" are handed hinges
- 1/4" diameter stainless steel pin
- Electrical modifications available



STAINLESS STEEL POWER TRANSFER HINGES

CONCEALED THRU WIRE



- For all full concealed models (except A511)
- TW2 - (2) 18ga. wire 1 location
- TW4 - (4) 28ga. wire 1 location
- TW8 - (8) 28ga. wire (2) - 4 wire locations
- For all full concealed models add suffix TW2, TW4 or TW8
- Call factory or go on-line for order form

MOVEABLE



- Cut to allow access for TW, CT, ES and AMS wiring between hinge and frame or door
- For all full concealed models (except A511)
- Add suffix M

CONTINUOUS HINGE MODIFICATIONS

- Special Lengths-Indicate Handing
- Hospital Tip-Suffix HT
- Dutch Door Prep-Suffix DD, indicate handing, clearances, door and frame heights
- Blank-No holes for special applications
- Standard Edge Guard Cutout 4-7/8' ASA Strike 161 Latch 86 Mortise Manual Flush Bolt Automatic Flush Bolt
- Security Stud-Suffix SS, stainless steel studs mounted to frame leaf. Corresponding holes drilled in door leaf. Special prep required for frame and door
- Sheared Leaf-Suffix SL for narrow door thickness. Specify distance from pin centerline to heel edge of hinge.
- Custom Hole Pattern-Suffix CH, any hole dimension or pattern other than IDC standard. Indicate hole size and dimensions.

ELECTRICAL MODIFICATIONS

- Concealed Power Transfer-Suffix TW2, TW4 or TW8
- Power Transfer Contact Switch- suffix CT-4 or CT-8, for 16 amp surge current, 1/4 -20 screws posts to accommodate any gauge wire, no wire furnished.
- Lead-Lined Cover-Suffix LL for surface mount only.
- Current Transfer Prep-Suffix PT, indicate position and handing
- Electric Power Transfer-PT105 (11.5") or PT180 (20.0"). Does not include hinge, hinge power transfer prep or Security bracket (PTS).
- Exposed Monitoring Switch-Suffix ES available in A500, A503, A504, A505 & A515.
- Adjustable Monitoring Switch-Suffix AMS.

Contact factory or go on-line for order forms for electrical modifications or standard/custom cutouts.

International Door Closers, Inc.

COPYRIGHT 2017 INTERNATIONAL DOOR CLOSERS, INC

West: 800-544-4422 • East: 800-225-6737

www.intldoorclosers.com



CROSS REFERENCE CHART

STAINLESS STEEL HINGES

| STAINLESS STEEL HINGE CROSS REFERENCE CHART | | | | |
|---|----------|---------|---------|------|
| IDC | MARKAR | HAGER | STANLEY | IVES |
| IDCA500 | FM300 | 790-900 | 651HD | 700 |
| IDCA502 | FS302 | - | 657HD | 702 |
| IDCA503 | HS303 | 790-903 | - | 703 |
| IDCA504 | HM304 | 790-904 | - | 704 |
| IDCA505 | HG305 | 790-905 | 652HD | 705 |
| IDCA506 | HG306 | - | 655HD | - |
| IDCA511 | HG311 | - | 656HD | 711 |
| IDCA515 | HG315 | 790-915 | 655HD | 715 |
| IDCA528S | EG308 | - | EG1 | - |
| IDCA528B | EH308 | - | EG1B | - |
| IDCA538CS | EG-C-308 | - | EG2 | - |
| IDCA538CB | EG-C-308 | - | EG2B | - |
| IDCA548TS | EG-T-308 | - | EG3 | - |
| IDCA548TB | EG-T-308 | - | EG3B | - |
| IDCA550 | FM3500 | - | - | - |



HEAVY DUTY EDGE GUARDS

STAINLESS STEEL



IDCA528 Edge Guard
with 1 Lip Only



IDCA538C
Full Edge Guard



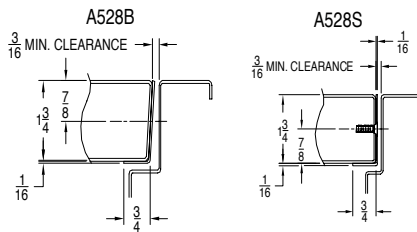
IDCA548T Full Edge Guard
With Astragal

DOOR EDGE GUARDS

- Standard lengths 78-3/4", 83-1/8", 85", 96", 118-3/4"
- Special lengths available
- For bevel edge door (Suffix B) or square edge door (Suffix S)
- For 1-3/4" door
- Material 16 Gauge, 304 Stainless Steel
- For high traffic, high abuse doors
- Standard cutouts available
- Custom Cut-outs available as required
- Non-handed (except with cutouts)

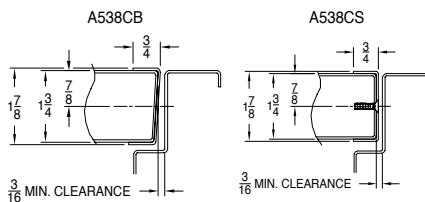
IDCA528 EDGE GUARD

- 3/4" door edge lip, one side
- Bevel and square edge available



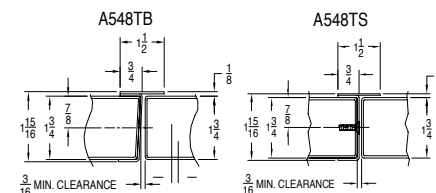
IDCA538C EDGE GUARD

- 3/4" door edge lip, both sides
- Bevel and square edge available



IDCA548T EDGE GUARD WITH ASTRAGAL

- 3/4" door edge lip, both sides with astragal one side
- Bevel and square edge available



STANDARD CUTOUTS



161 Latch



86 Mortise



4-7/8"
ASA Strike

- Other cutouts or order forms available online (www.intldoorclosers.com) or contact factory



ARCHITECTURAL HINGES

FULL MORTISE BALL BEARING HINGES

Standard Weight

| | |
|------------------|---|
| IDCBB814545US26D | 5 Knuckle Ball Bearing 4.5 x 4.5 Steel Hinge, Dull Chrome |
| IDCBB814545US10B | 5 Knuckle Ball Bearing 4.5 x 4.5 Steel Hinge, Oil Rubbed Bronze |
| IDCBB514545US32D | 5 Knuckle Ball Bearing 4.5 x 4.5 Stainless Steel Hinge |
| IDCBB814540689 | 5 Knuckle Ball Bearing 4.5 x 4.0 Hinge, Aluminum Powder Coat |
| IDCBB814540695 | 5 Knuckle Ball Bearing 4.5 x 4.0 Hinge, Dark Bronze Powder |
| IDCBB814540800 | 5 Knuckle Ball Bearing 4.5 x 4.0 Hinge, Black Powder Coat |

Heavy Weight

| | |
|------------------|---|
| IDC4B814545US26D | 5 Knuckle Ball Bearing 4.5 x 4.5 Steel Hinge, Dull Chrome |
| IDC4B814545US10B | 5 Knuckle Ball Bearing 4.5 x 4.5 Steel Hinge, Oil Rubbed Bronze |
| IDC4B814545US32D | 5 Knuckle Ball Bearing 4.5 x 4.5 Stainless Steel Hinge |



FULL MORTISE SPRING HINGES

| | |
|------------------|---|
| IDCSP814545US26D | Spring Hinge 4.5 x 4.5 Steel Hinge, Dull Chrome |
| IDCSP814545US10B | Spring Hinge 4.5 x 4.5 Steel Hinge, Oil Rubbed Bronze |

FULL MORTISE SWING CLEAR BALL BEARING HINGES

| | |
|--------------------|--|
| IDCSCBB814545US26D | Swing Clear 4.5 x 4.5 Steel Hinge, Dull Chrome |
| IDCSCBB814545US10B | Swing Clear 4.5 x 4.5 Steel Hinge, Oil Rubbed Bronze |

IDCAHP SERIES

5 Knuckle 2 Bearing Spring Hinge

Size:

- 4.0"x4.0"
 - 4.5"x4.0"
 - 4.5"x4.5"
 - 5.0"x5.0"
 - Other specs are available.
- Finishes Available:
US3, US4, US10, US10B, US26,
US26D, US32, US32D, White, etc.
 - Options:
NRP (Non-Removable Pin)





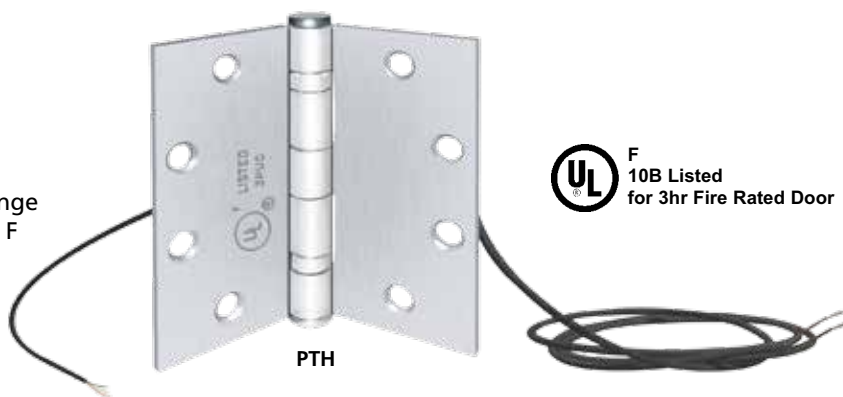
ELECTRIC POWER HINGE WITH CONCEALED WIRES

PTH HINGE

POWER TRANSFER

PTH Power Transfer Hinge

- UL10B listed for 3Hr fire rated doors. If the hinge you are presently using does not bear the (UL) F mark, it is not listed for use with fire doors.
- Wire replacement warranty



Applications

Installed in the center hinge position of the door, PTH Power Transfer Hinges provide the concealed wires required between the door and the frame, for the purpose of powering and monitoring electric door hardware.

- Electric Lock Power and Control
- Door and Lock Status Signaling
- Request-to-Exit Signaling

Electric Power Transfer Device

- IDC's heavy duty Electric Power Transfer Device provides a concealed and secure means of transferring electric lock and exit device power and signal wires from the frame to the door.
- Completely concealed when the door is closed.
- The PTD Electric Power Transfer Device is ideal for heavy traffic and applications requiring higher security to inhibit tampering and abuse.



PTD

Model

- PTH-2+4** 16 Amp Inrush, 6 conductor power transfer hinge
1-pair 16 Amp inrush, 4 Amp continuous;
2-pair 1 Amp @ 12/24V
4.5" x 4.5" standard weight
626 Dull Chrome finish
- PTH-4** Four (4) Conductor Power Transfer Hinge
1 Amp @ 12/24V per pair
4.5" x 4.5" standard weight
- PTH-10** Ten (10) Conductor Power Transfer Hinge
1 Amp @ 12/24V per pair
4.5" x 4.5" standard weight

Finish

- All base material, steel.
626 Dull Chrome (*standard*)
605 Bright Brass
613 Oil Rubbed Bronze
625 Bright Chrome

Options

PTH hinge with door position switch

- DPS** Concealed Door Position Switch
SPDT, 250mA @ 30VDC
Consult factory for 3 knuckle, and special size



SPECIAL FINISHES

STANDARD COLORS

SPECIAL ORDER



DS 716 + 2103/01



9010



6021



DS 733 + 2301/01



9005



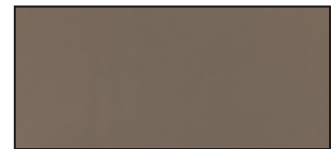
6002



DS 733 + 1802/02



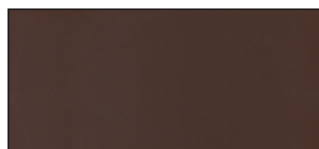
7004



1035



DS 733 + 1001/01



8014



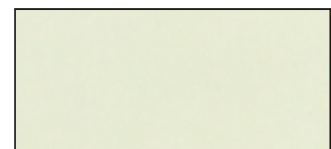
DS 708 + 5001/01



DS 733 + 1401/01



9022



Light 001
(Glow In The Dark)

CUSTOM COLORS AVAILABLE

International Door Closers, Inc.

COPYRIGHT 2017 INTERNATIONAL DOOR CLOSERS, INC

West: 800-544-4422 • East: 800-225-6737

www.intldoorclosers.com



West Coast Office

International Door Closers, Inc.
4431 E. La Palma, Anaheim, CA 92807
Tel: (714) 666-0390 • (800) 544-4422
Fax: (714) 666-2215

East Coast Office

International Door Closers, Inc.
1920 Air Lane Drive, Nashville, TN 37210
Tel: (615) 885-7060 • (800) 225-6737
Fax: (615) 885-0903



intldoorclosers.com

Copyright © 2017, International Door Closers, Inc.