



UNILOCK[®]
DESIGNED TO CONNECT.™

ARCHITECTURAL PAVEMENTS AND RETAINING WALLS





BRINGING YOUR VISION TO LIFE

Designed and installed in some of the most prestigious commercial spaces in North America, Architects, Landscape Architects and Engineers trust Unilock® to bring their architectural vision to life and to withstand the toughest rigor of a commercial environment.





MOCA & UPTOWN ALLEYWAY

The MOCA and Uptown Alleyway project covers approximately 65,000 square feet and is the City of Cleveland's first permeable public roadway. The master plan was created by James Corner Field Operations; The Riverstone Company and McKnight & Associates were the local consultants. Unilock worked with the project teams to provide solutions to the design objectives: vehicular and pedestrian loads, narrow, linear paving stones, custom grey tones, and a durable, fade-resistant surface finish, all of which needed to be permeable.

The 4" x 16" x 4" Promenade™ Plank Paver from Unilock® provided the shape and module desired. The Series 3000® finish delivers resistance to the long-term effects of UV degradation as well as durability to everyday high-traffic use. Custom grey colors delivered the right tonal balance were developed to complement the architecture. Vehicular grade spacers were added to create the permeable joints, and ASTM #9 chip was used in the voids to allow storm water to be transmitted vertically while being filtered.



APPLICATIONS

STREETSCAPES

Creating urban centers with visual appeal and style, while reflecting the character of the town or city, demands the right products to capture the spirit of the space. Our extensive range of exclusive textures, colors and sizes allow you to explore the design diversity required with products that will stand up to the application. High-traffic roads require heavy-duty paving and with Unilock, using the right unit paver can make a powerful impression.

TOP LEFT

PROJECT: Main Street. Markham, Ontario.

DESIGN: M&M Design Consultants

PRODUCT: Copthorne® / Town Hall™

TOP RIGHT

PROJECT: Yorkville Avenue. Toronto, Ontario.

DESIGN: The Planning Partnership

PRODUCT: Promenade™ Plank Paver - Umbriano®







APPLICATIONS

COMMERCIAL RETAIL

In commercial environments Unilock pavers and retaining walls offer a wide range of design solutions. Whether you are working with our standard product palette or taking advantage of our extensive custom capabilities, you will have the right products to bring your vision to life. Adding atmosphere, scale, flow and harmony, you will have the selection you need to meet your design objectives.

TOP LEFT

PROJECT: Navy Pier. Chicago, Illinois.

DESIGN: James Corner Field Operations

PRODUCT: Promenade™ Plank Paver - Series 3000®

TOP RIGHT

PROJECT: Eton Chagrin Boulevard, Woodmere, Ohio.

PRODUCT: Umbriano®







APPLICATIONS

PARKS & RECREATION

Seamlessly complement the beauty of gardens, fountains, and other natural or man-made design elements, with the confidence that the paving material you select will stand up to the rigor of its environment. Unilock products offer advanced surface technologies that deliver a variety of benefits including stain resistance and easy cleaning properties. This makes them an ideal choice for high-traffic pedestrian areas.

TOP LEFT

PROJECT: Baxter Park. Somerville, Massachusetts.

DESIGN: Copley Wolff Design Group

PRODUCT: Belpasso®

TOP RIGHT

PROJECT: Cedar Point. Sandusky, Ohio.

DESIGN: Cedar Fair

PRODUCT: Il Campo®







APPLICATIONS

URBAN PLAZAS

For centuries, Europeans have been gathering in public squares for farmers markets, community events and entertainment. This tradition continues in modern day North America with citizens drawn to public spaces to relax or catch up with friends. The extensive collection of Unilock styles, colors and textures provide infinite design choices to reflect the surrounding environment and to bring a sense of community to any urban outdoor space.

TOP LEFT

PROJECT: Storrs Center. Mansfield, Connecticut.
DESIGN: Kent + Frost Landscape Architects
PRODUCT: Series 3000® / Eco-Priora™ - Series 3000®

TOP RIGHT

PROJECT: Public Plaza at CN Tower. Toronto, Ontario.
DESIGN: IBI Group L.A. / Graham Infrastructure LP
PRODUCT: Umbriano®







APPLICATIONS

OFFICES & CONDOMINIUMS

Successful commercial design incorporates elements which enhance a company's brand image and the building's architectural style. Linear patterns, color and texture are used to encourage flow and create stunning visual effects without compromising function. The wide range of Unilock sizes and styles allow you to create just the right look and feel.

TOP LEFT

PROJECT: Bayer Campus. Pittsburgh, Pennsylvania.
DESIGN: CH2M Hill
PRODUCT: Umbriano® / Series 3000® / Il Campo®

TOP RIGHT

PROJECT: Milan Condominiums. Toronto, Ontario.
DESIGN: Alexander Budrevics
PRODUCT: Promenade™ Plank Paver - Umbriano®







APPLICATIONS

ROOF DECKS

The opportunity to reclaim a functional space and turn it into an attractive destination has never been greater. Unilock offers a full line of architectural roof deck pavers with the same great finishes used for on-grade applications. This makes it easier than ever to create harmony between the building's outdoor space and the site paving.

TOP LEFT

PROJECT: 233 North Michigan Avenue. Chicago, Illinois.
DESIGN: Wolff Landscape Architecture, Inc.
PRODUCT: Umbriano®

TOP RIGHT

PROJECT: Tribute Condominium. Toronto, Ontario.
DESIGN: Terra Plan Landscape Architects
PRODUCT: Umbriano®







APPLICATIONS

ACADEMIC & HEALTHCARE

The high-traffic demands of academic and healthcare applications require products that perform. Unilock EnduraColor™ and EnduraColor™ Plus Architectural Finishes give you the confidence that you are choosing beauty that will stand the test of time. These surfaces offer the most extensive selection of colors, textures and sizes, enabling you to bring to life your unique vision for the space.

TOP LEFT

PROJECT: CREC Safety Academy. Enfield, Connecticut.

DESIGN: S/L/A/M Collaborative

PRODUCT: Umbriano® / Copthorne® / Eco-Priora™

TOP RIGHT

PROJECT: Cleveland Clinic. Twinsburg, Ohio.

DESIGN: Cawrse & Associates

PRODUCT: Umbriano®





20



21



APPLICATIONS

GOLF COURSES & RESORTS

Creating a relaxing retreat, ensuring harmony with the natural surrounding, conveying the excitement and energy of the city or evoking the resort's world-class brand image are all statements of your design and Unilock has the right product for each theme. Stunning architectural finishes and color options provide you with the opportunity to design what hasn't been designed before.

TOP LEFT

PROJECT: Park Ridge Country Club. Park Ridge, Illinois.
DESIGN: OKW Architects
PRODUCT: Copthorne®

TOP RIGHT

PROJECT: Hyatt. Chicago, Illinois.
DESIGN: Bentel & Bentel / BauerLatoza Studio
PRODUCT: Belpasso®





23



24



APPLICATIONS

HEAVY-DUTY & PARKING LOTS

For maximum performance where load capacity, truck and trailer loading or everyday vehicular traffic are factors, Unilock can provide you with the right products. Heavy-duty pavers are available in traditional and permeable versions, in standard finishes as well as custom color and finish options to ensure that your design vision is achieved.

TOP LEFT

PROJECT: Fire Station. Grand Traverse, Michigan.

DESIGN: Gourdie-Fraser, Inc.

PRODUCT: Eco-Optiloc™

TOP RIGHT

PROJECT: Museum of Science & Industry. Chicago, IL.

DESIGN: Stanley Consultants

Carol Yetken Landscape Architect

PRODUCT: Eco-Optiloc™ / Eco-Priora™







APPLICATIONS

PERMEABLE

Environmentally conscious product choices are more in demand than ever. Over the last 20 years Unilock has developed an extensive collection of innovated products for environmental concerns such as stormwater management. Now rainwater harvesting and water quality concerns can be alleviated by designing in style with beautiful colors and textures while promoting sustainability.

TOP LEFT

PROJECT: Loyola University. Chicago, Illinois.

DESIGN: SmithGroup JJR

PRODUCT: Eco-Priora™

TOP RIGHT

PROJECT: Metra Parking Lot. Glen Ellyn, Illinois.

DESIGN: Gary R Weber Associates, Inc. / Rempe Sharpe

PRODUCT: Town Hall™







APPLICATIONS

SEGMENTAL RETAINING WALLS

Unilock has the right wall for every design scenario; from hand-installed to machine-set, from 2 feet to 40 feet high, we have products to meet the demands of your design. Speak with your Unilock Representative to explore the possibilities.

TOP LEFT

PROJECT: University of Michigan, Helipad.
Ann Arbor, Michigan.

DESIGN: Albert Kahn & Associates

PRODUCT: Pisa2®

TOP RIGHT

PROJECT: Bank One. Frankfurt, Illinois.

DESIGN: W. T. Engineering

PRODUCT: SienaStone®





32



33

UNILOCK[®]

TECHNOLOGIES

ENDURACOLOR[™]

PLUS ARCHITECTURAL FINISHES

EnduraColor Plus products promise long-lasting beauty through a proprietary blend of exclusive and superior ingredients.

WHAT IS THE 'PLUS' IN ENDURACOLOR[™] PLUS?

A complex blend of granite and quartz, some of nature's highest performing minerals, are combined to create ultra-realistic surface textures and unique style options that are exceptionally durable.

A NEW STANDARD FOR EVERLASTING BEAUTY.

ENDURACOLOR[™]

ENDURING COLOR

Concentrated color and special wear-resistant materials

UNITED WITH

STRENGTH

Coarser foundation that gives the stone its strength



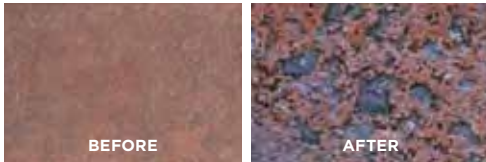
EnduraColor[™] products deliver durability through a perfect union: long-lasting color with permanent strength.

The top portion of each stone is engineered with concentrated color and special wear-resistant materials. This is permanently united with the stone's base - a sturdier, coarser foundation designed for remarkable strength.

INCREDIBLE DURABILITY

ENDURACOLOR™ PLUS TORTURE TEST

STANDARD PAVER



ENDURACOLOR™ PLUS ARCHITECTURAL FINISHES



Immersed in a bath of muriatic acid for 5 minutes, the surface of a standard paver deteriorates while EnduraColor Plus remains as beautiful as ever.

LOOK FOR THESE ADDITIONAL TECHNOLOGIES IN ENDURACOLOR™ PLUS ARCHITECTURAL FINISHES:

R Reala™

Ultra-realistic textures cast from natural stone, brick and historic cobblestones.

C ColorFusion™

A proprietary technology that disperses color randomly for a natural, granite-like appearance.

E EasyClean™

An integral surface protection that allows for easier cleanup of spills when they happen, and before a stain can develop.

T TitanTec™

A proprietary technology that makes the surface virtually impenetrable to dirt, grease and oils.

U Ultima™

For heavy traffic loads, this proprietary manufacturing process creates pavers and walls with up to four times the strength of poured concrete.

QUALITY ASSURED

PRODUCT QUALITY

Unilock manufacturing teams have an unrelenting commitment to shipping only top quality products.

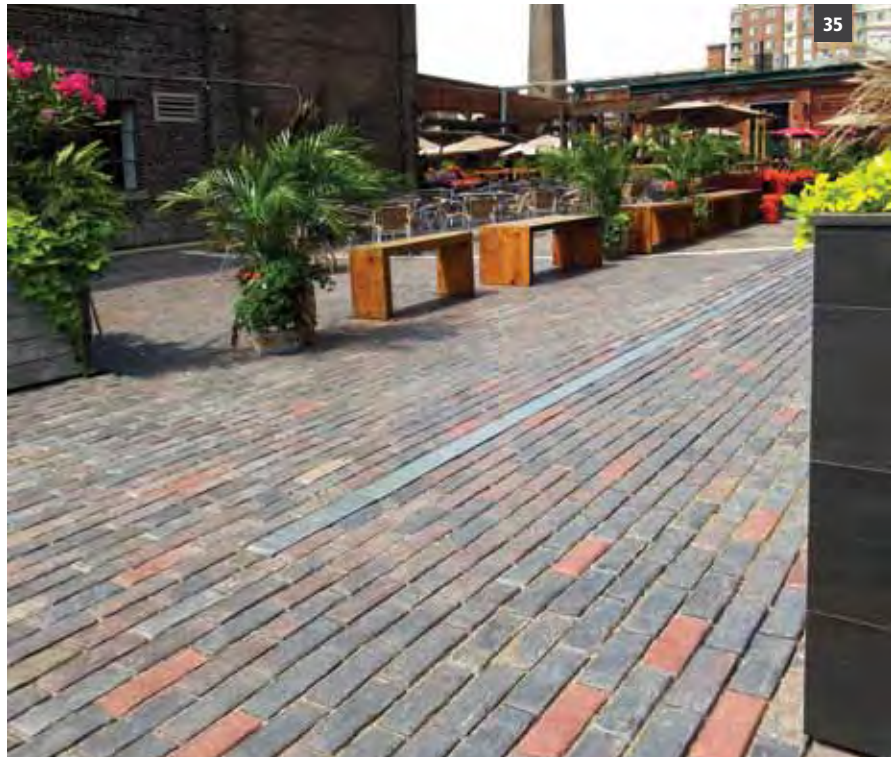
Our world-class production facilities are renowned for their safety and cleanliness and are staffed with the most experienced production people in the industry. Our continual investment in the most technologically advanced equipment ensures we're able to provide the best in product quality, consistency and design.

UNILOCK® PRODUCTS ARE:

- | Tested from raw materials to finished product
- | Tested hourly for product density
- | Designed to meet all dimensional tolerances
- | Inspected by dedicated quality control staff
- | Above industry quality standards (ASTM & CSA)
- | Durable and slip-resistant
- | Made with colorfast pigments
- | Resistant to salt erosion and chlorine
- | Designed to tolerate oil or gas spills

UNILOCK[®] CUSTOMIZATION

Unilock allows you to customize products to suit your project. Our vast array of sizes, edges, finish and color options make it easy to achieve your design vision. Speak with your Unilock Representative about custom options available in your market.



SIZE OPTIONS



36 × 36"
90 × 90cm
T: 10cm



24 × 24"
60 × 60cm
T: 5, 7, 10 or 15cm



16 × 24"
40 × 60cm
T: 10cm



12 × 24"
30 × 60cm
T: 5, 7, 10 or 15cm



8 × 24"
20 × 60cm
T: 10 or 15cm



6 × 24"
15 × 60cm
T: 7 or 15cm



16 × 16"
40 × 40cm
T: 7, 8 or 10cm



8 × 16"
20 × 40cm
T: 7 or 10cm



4 × 16"
10 × 40cm
T: 10cm



12 × 12"
30 × 30cm
T: 7, 8 or 10cm



6 × 12"
15 × 30cm
T: 7, 8 or 10cm



4 × 12"
10 × 30cm
T: 7, 8 or 10cm



3 × 12"
7.5 × 30cm
T: 10cm



8 × 8"
20 × 20cm
T: 7, 8 or 10cm



8 × 8"
20 × 20cm
T: 7cm



6 × 8"
15 × 20cm
T: 7cm



4 × 8"
10 × 20cm
T: 6, 7 or 8cm



6 × 6"
15 × 15cm
T: 7 or 8cm



3 × 6"
7.5 × 15cm
T: 10cm



4 × 4"
10 × 10cm
T: 7cm



10¼ × 10¼"
26 × 26cm
T: 8cm



6 × 12 × 16¾"
15 × 30 × 42.4cm
T: 7 or 8cm

PERMEABLE SIZE OPTIONS



8 × 8"
20 × 20cm
T: 8cm



3 × 12"
7.5 × 30cm
T: 10cm



10¼ × 10¼"
26 × 26cm
T: 8cm



10 × 10"
24 × 24cm
T: 8cm



5 × 10"
12 × 24cm
T: 8cm



5 × 5"
12 × 12cm
T: 8cm

EDGE DETAILS



Zero Bevel Edge



Micro Bevel Edge



Rounded Edge



Chamfered Edge

Not all shapes and sizes are available in all regions, or in all finish or edge options. Consult your Unilock Representative for more information.
All measurements are nominal.

FINISH OPTIONS

ENDURACOLOR **PLUS** ARCHITECTURAL FINISHES



BELPASSO® Enamel Finish
with TitanTec™



UMBRIANO® Mottled Finish
with ColorFusion™ and EasyClean™



SERIES 3000® Exposed Aggregate Finish

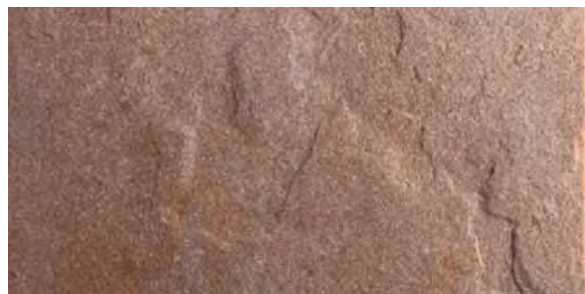


REALA™ Finish
with Ultima™

ENDURACOLOR™



IL CAMPO® Brushed Finish



RIVEN Finish



SMOOTH/PREMIER Finish

COLOR OPTIONS

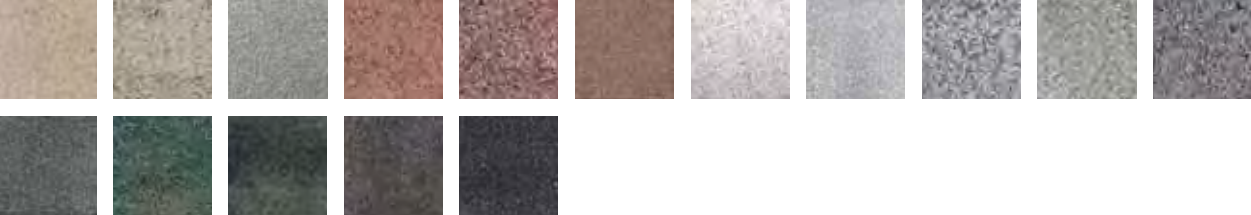
BELPASSO®



UMBRIANO®



SERIES 3000®



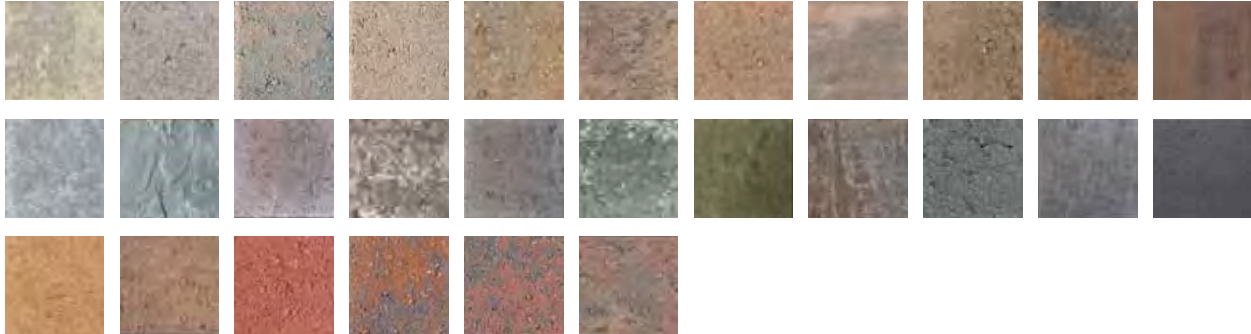
IL CAMPO®



SMOOTH/PREMIER and RIVEN



ADDITIONAL COLOR OPTIONS



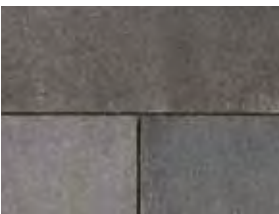
Ask your Unilock Representative about locally stocked colors.

PROMENADE™ PLANK PAVER

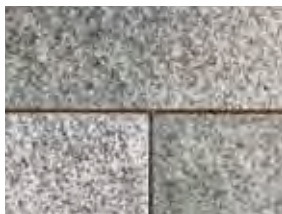
Clean, sleek lines are essential to any modern design. Choose the size, finish and color from Unilock's Promenade™ Plank Paver series for long narrow paving 'planks' to create a dynamic linear aesthetic to complement any design.



CUSTOM FINISH OPTIONS



BELPASSO®
Enamel Finish



UMBRIANO®
Mottled Finish



SERIES 3000®
Exposed Aggregate Finish



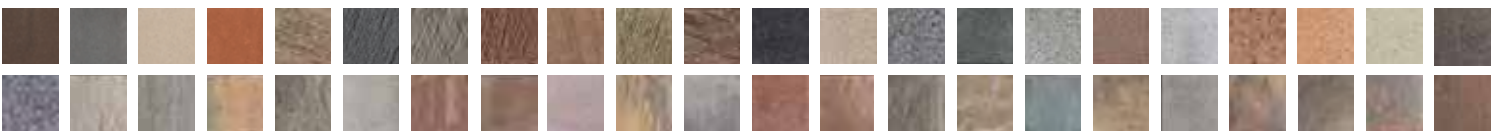
IL CAMPO®
Brushed Finish



SMOOTH/PREMIER
Finish

CUSTOM COLOR OPTIONS*

Ask your Unilock Representative about locally stocked colors.



PRODUCT SPECIFICATIONS



8 x 24 x 4"
(20 x 60 x 10cm)



6 x 24 x 6"
(15 x 60 x 15cm)



4 x 16 x 4"
(10 x 40 x 10cm)




4 x 12 x 4"
(10 x 30 x 10cm)



3 x 12 x 4"
(7 x 30 x 10cm)

Promenade® can be manufactured in a variety of custom colors and textures. Minimum quantities will apply. Please contact your Unilock Representative for more details.

 Permeable version 3 x 12", Eco-Promenade™ is available by special order. See page 53.

BELPASSO®

Belpasso® outperforms any other unit paver when it comes to surface wear, color retention and the ability to repel even the nastiest staining substances, including strong acids and chewing gum.

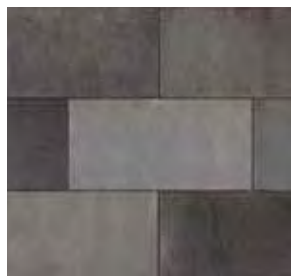
34



COLORS



CASTANO



NUVOLA



CREMA (SRI 49)



BIANCO



GRIGIO



MEDITERANO
(SRI 38)

CUSTOM COLORS* (Solid colors also available)

PRODUCT SPECIFICATIONS



8 x 16 x 2 3/4"
(20 x 40 x 7cm)



8 x 8 x 2 3/4"
(20 x 20 x 7cm)



reddot design award
winner 2009

T TitanTec

E EasyClean™

*Custom colors are available by special order, minimum quantities will apply. Not all colors are stocked in all regions. * Please contact your Unilock Representative for more details.*

UMBRIANO®

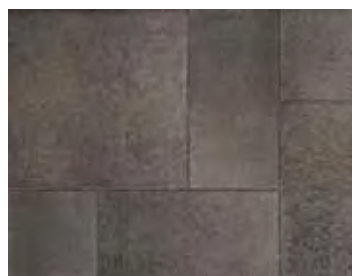
Random dispersion of color and granite particles creates the beauty of Umbriano's unique mottled surface, resembling natural granite in this dramatic, large-scale paving stone. Ideal selection for high traffic areas such as commercial plazas and offices.



COLORS



AUTUMN SUNSET (SRI 32)



MIDNIGHT SKY



SUMMER WHEAT (SRI 48)



WINTER MARVEL (SRI 38)

PRODUCT SPECIFICATIONS



24 x 24 x 2 3/4"
(60 x 60 x 7cm)



12 x 24 x 2 3/4"
(30 x 60 x 7cm)



16 x 16 x 2 3/4"
(40 x 40 x 7cm)



8 x 16 x 2 3/4"
(20 x 40 x 7cm)



8 x 8 x 2 3/4"
(20 x 20 x 7cm)



Design award
winner 2011



ColorFusion™



EasyClean™

Verify locally stocked sizes and colors with your Unilock Representative.

IL CAMPO®

Il Campo features irregular etched lines across each unit paver for a richly detailed look that's striking and inviting. Il Campo gives you the ability to create both geometric and random patterns with a large range of available sizes.

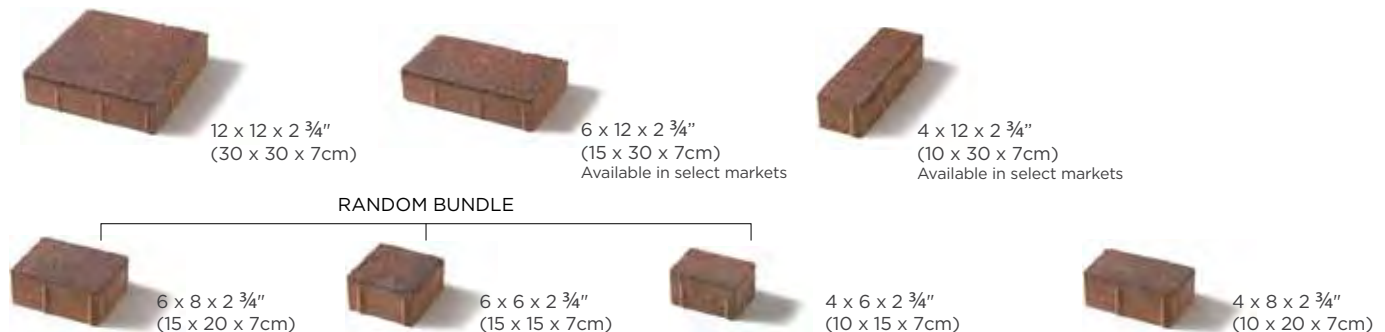


COLORS (verify locally stocked colors in your region)



COFFEE CREEK BAVARIAN BLEND DARK CHARCOAL GRANITE HERITAGE BROWN OAKWOOD SANTA FE SIERRA

PRODUCT SPECIFICATIONS



Verify locally stocked sizes and colors with your Unilock Representative.

SERIES 3000®

A sophisticated unit paver finish with a high-performance surface, made from a combination of granite and quartz aggregates. Series 3000 is the ideal component to bring your architectural vision to life.

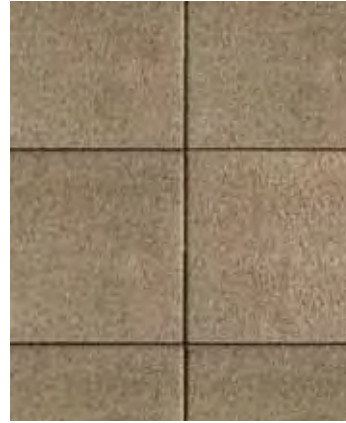
COLORS (verify locally stocked colors in your region)



BLACK GRANITE



CRYSTAL ROSE



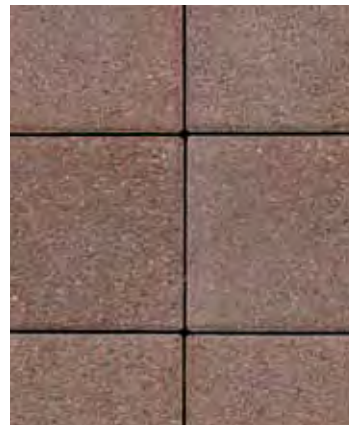
GOLDEN TAN



ICE GREY (SRI 38)



MINERAL ICE GREY (SRI 33)



MOCHA BROWN



MOUNTAIN MIST (SRI 29)



ONYX BLACK

CUSTOM COLORS*



BARITONE BLACK BUFF

CABERNET RED CORAL GEM

GLACIER

GREY

LAURENTIAN GREEN

PEPPERED SAND (SRI 60)

PLATINUM GREY (SRI 29)

STARLIGHT

PRODUCT SPECIFICATIONS



12 x 12 x 2 3/4"
(30 x 30 x 7cm)



6 x 12 x 2 3/4"
(15 x 30 x 7cm)



6 x 6 x 2 3/4"
(15 x 15 x 7cm)



4 x 8 x 2 3/4"
(10 x 20 x 7cm)

*Custom colors are available by special order, minimum quantities will apply. * Please contact your Unilock Representative for more details.*



CITY PARK PAVER™

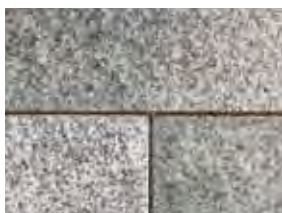
City Park Paver is a traditional urban paver shape available in many custom finishes and colors. This paver shape is a class-act no matter what the application, residential, park or plaza.



CUSTOM FINISH OPTIONS



BELPASSO®
Enamel Finish



UMBRIANO®
Mottled Finish



SERIES 3000®
Exposed Aggregate Finish

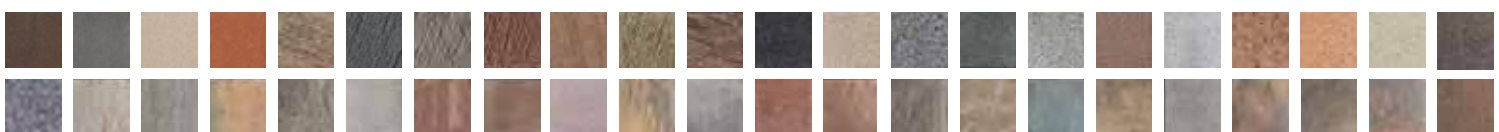


IL CAMPO®
Brushed Finish



SMOOTH/PREMIER
Finish

CUSTOM COLOR OPTIONS*



PRODUCT SPECIFICATIONS



8 x 8 x 2 3/4"
(20 x 20 x 7cm)

 Permeable 8cm version is available by special order. Not available in Belpasso®. See page 54.

*City Park Paver® can be manufactured in a variety of custom colors and textures. Minimum quantities will apply. * Please contact your Unilock Representative for more details.*

COURTSTONE®

Bring a sense of old-world Europe to your design with Courtstone. The unsurpassed strength and realistic texture create an everlasting product which is ideal for vehicular paving and accents.



COLORS



BASALT



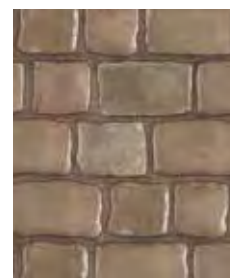
BELGIAN BLUE



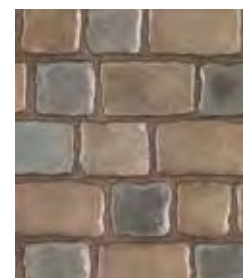
BASALT /
BELGIAN BLUE
BLENDED ON SITE



DAWN MIST



PEBBLE TAUPE



DAWN MIST /
PEBBLE TAUPE
BLENDED ON SITE

PRODUCT SPECIFICATIONS

RANDOM BUNDLE



XL RECTANGLE
5 1/8 x 8 3/8 x 2 3/8"
(13 x 21.5 x 6cm)



LARGE RECTANGLE
5 1/8 x 7 1/4 x 2 3/8"
(13 x 18.5 x 6cm)



RECTANGLE
5 1/8 x 6 1/2 x 2 3/8"
(13 x 16.5 x 6cm)



SMALL RECTANGLE
5 1/8 x 5 3/4 x 2 3/8"
(13 x 14.5 x 6cm)



SQUARE
5 1/8 x 5 1/8 x 2 3/8"
(13 x 13 x 6cm)



COPTHORNE®

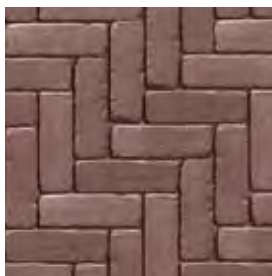
Create a look reminiscent of the brick pavers used in old European cities, towns and villages. Crafted using a special forming process, each piece is uniquely altered, yet the dimensions are consistent for efficient installation.



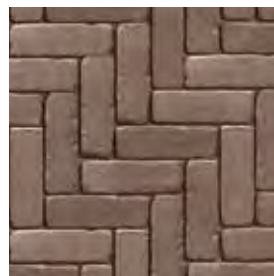
COLORS



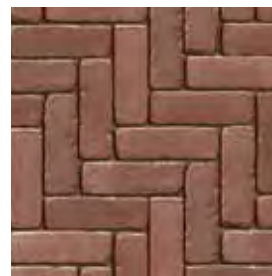
BASALT



BURGUNDY RED



BURNT CLAY



OLD OAK



BURGUNDY RED /
 BURNT CLAY / OLD OAK
 BLENDED ON SITE

PRODUCT SPECIFICATIONS

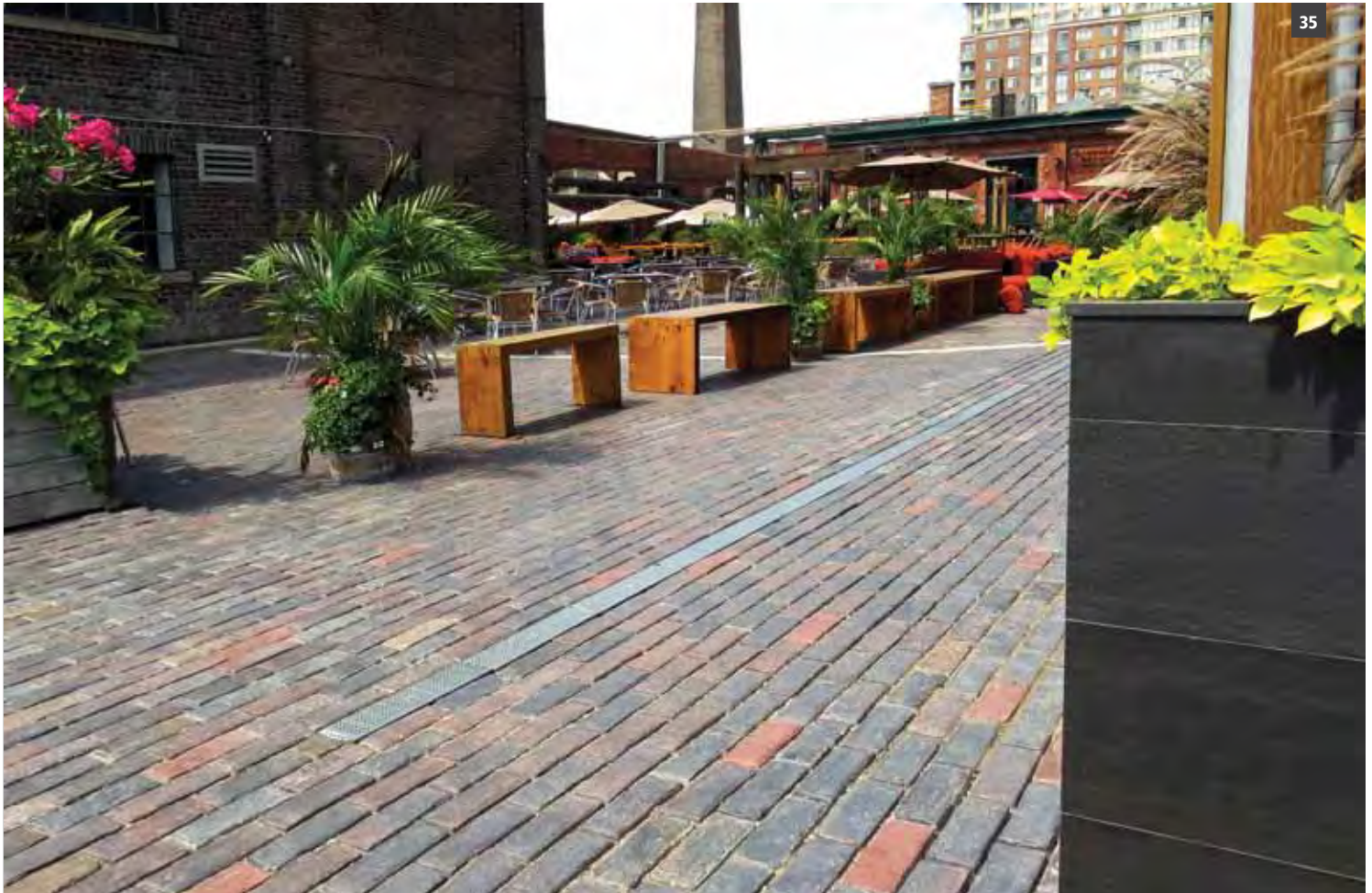


2 1/2 x 7 7/8 x 2 3/8"
 (6.5 x 20 x 6cm)



TOWN HALL™

With Unilock's ever increasing focus on permeable pavers, the Town Hall street paver has been designed to satisfy both traditional and permeable installation methods while maintaining a time-worn, historical and distressed appearance.



COLORS



BASALT

BURGUNDY RED

BURNT CLAY

OLD OAK

BURGUNDY RED
BURNT CLAY
OLD OAK
BLENDED ON SITE

HERITAGE CLAY

HERITAGE RED

HERITAGE 2
COLOR BLEND
BLENDED ON SITE

PRODUCT SPECIFICATIONS



4 x 9 3/4 x 2 3/4"
(10 x 25 x 7cm)



 Town Hall is also available for permeable installations. See page 54.

RICHCLIFF®

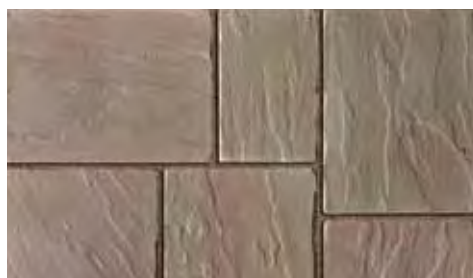
The realistic, embossed surface texture of Richcliff is cast from hundreds of natural stone surface textures to ensure a random natural appearance. It is up to four times stronger than ordinary poured concrete, making it an ideal choice for any application.



COLORS



DAWN MIST



PEBBLE TAUPE



PEBBLE TAUPE / DAWN MIST
 BLENDED ON SITE

PRODUCT SPECIFICATIONS

RANDOM BUNDLE



LARGE RECTANGLE
 12 x 9 x 2 3/8"
 (30 x 22.6 x 6cm)



SQUARE
 9 x 9 x 2 3/8"
 (22.6 x 22.6 x 6cm)



SMALL RECTANGLE
 6 x 9 x 2 3/8"
 (15 x 22.6 x 6cm)

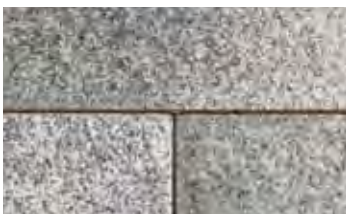


ARTLINE™

The long, clean lines of Artline reflect an emerging trend to a minimalist, modern design approach. This is the perfect product to combine different finishes to create unique graphic interest.



CUSTOM FINISH OPTIONS



UMBRIANO®
Mottled Finish



SERIES 3000®
Exposed Aggregate Finish



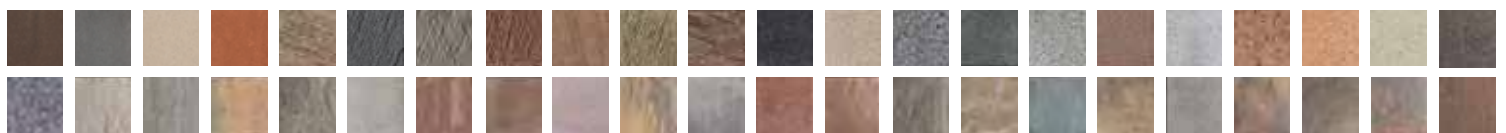
IL CAMPO®
Brushed Finish



SMOOTH/PREMIER
Finish

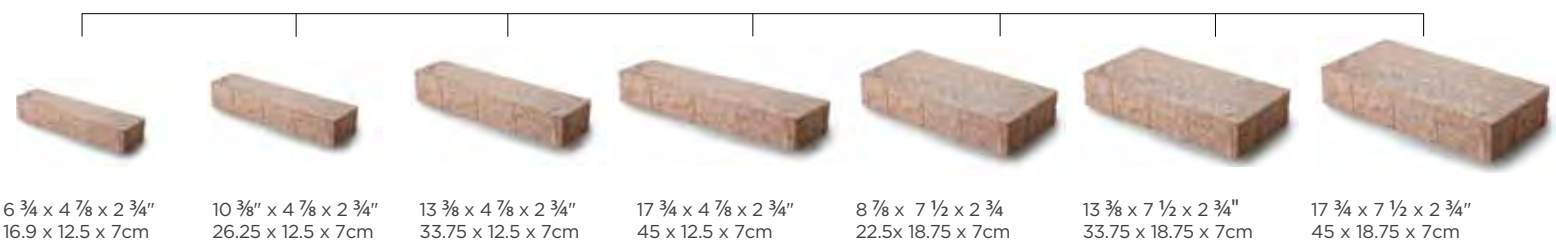
CUSTOM COLOR OPTIONS*

Ask your Unilock Representative about locally stocked colors.



PRODUCT SPECIFICATIONS

RANDOM BUNDLE



10cm (4") Artline is available for custom orders only and minimum quantities will apply. * Please contact your Unilock Representative for more details.

THORNBURY™

Thornbury is available for both standard and permeable installations. Its modestly textured surface and three compatible sizes allow for a pleasingly, random look and feel.



COLORS (verify locally stocked colors in your region)



ALMOND GROVE ALPINE GREY BAVARIAN BLEND DESERT SAND GRANITE MAHOGANY NEVADA NEW YORK SIERRA SYCAMORE

PRODUCT SPECIFICATIONS

RANDOM BUNDLE



LARGE RECTANGLE
13 3/4 x 16 1/2 x 2 3/4"
(35 x 42 x 7cm)



MEDIUM RECTANGLE
13 3/4 x 8 1/4 x 2 3/4"
(35 x 21 x 7cm)



SMALL RECTANGLE
6 7/8 x 8 1/4 x 2 3/4"
(17.3 x 21 x 7cm)

BRISTOL VALLEY™

Bristol Valley™ has a natural appearance and is ideal for almost any landscape project you can imagine. Its soft blended colors and subtle surface design gives it a relaxed historical look and feel.



COLORS (verify locally stocked colors in your region)



ALMOND GROVE

BAVARIAN

GRANITE

NEW YORK

SIERRA

ALPINE FUSION

GRANITE FUSION

SIERRA FUSION

SYCAMORE FUSION

PRODUCT SPECIFICATIONS

RANDOM BUNDLE



LARGE RECTANGLE
21 x 14 x 2 3/8"
(54 x 36 x 6cm)



SQUARE
14 x 14 x 2 3/8"
(36 x 36 x 6cm)



SMALL RECTANGLE
7 x 14 x 2 3/8"
(18 x 36 x 6cm)

Bristol Valley is not recommended for vehicular traffic.

BRUSSELS BLOCK®

The original tumbled unit paver of North America. Its timeless warmth, relaxed appearance and tumbled finish make Brussels Block a one-of-a-kind product that reflects the design cues of quarried stone.



COLORS (verify locally stocked colors in your region)



ALMOND GROVE

COFFEE CREEK

DESERT SAND

LIMESTONE (SRI 29-ON)

MAHOGANY

NEW YORK

PRAIRIE

SANDSTONE (SRI 40-MA)

SIERRA

TERRA COTTA

PRODUCT SPECIFICATIONS



DIMENSIONAL PAVER
8 x 12 x 4"
(20 x 30 x 10cm)



XL STONE
8 1/4 x 13 3/4 x 2 3/4"
(20.8 x 34.8 x 7cm)



STANDARD STONE
6 7/8 x 8 1/4 x 2 3/4"
(17.4 x 20.8 x 7cm)



HALF STONE
4 1/8 x 6 7/8 x 2 3/4"
(10.4 x 17.4 x 7cm)



FULLNOSE
6 x 12 x 2 3/4"
(15 x 30 x 7cm)
NOT AVAILABLE IN NEW YORK BLEND

LARGE SCALE, NON-VEHICULAR SLABS

Ideally suited for roof decks, walkways, patios and pool decks, Rivenstone, Torino and Yorkstone offer the subtleties of natural flagstone, thermal finish and limestone respectively, while maintaining the durability and consistency of concrete.

RIVENSTONE™

COLORS



BLUESTONE



CANYON

PRODUCT SPECIFICATIONS



24 x 24 x 1 3/4"
(60 x 60 x 4.5cm)



18 x 24 x 1 3/4"
(45 x 60 x 4.5cm)



18 x 18 x 1 3/4"
(45 x 45 x 4.5cm)



12 x 24 x 1 3/4"
(30 x 60 x 4.5cm)



12 x 12 x 1 3/4"
(30 x 30 x 4.5cm)

TORINO™

COLORS

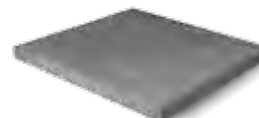


BLUE RIDGE



SAHARA

PRODUCT SPECIFICATIONS



24 x 24 x 1 3/4"
(60cm x 60cm x 4.5cm)



18 x 24 x 1 3/4"
(45cm x 60cm x 4.5cm)



12 x 24 x 1 3/4"
(30cm x 60cm x 4.5cm)

YORKSTONE™

COLORS



HONEY GOLD



IRON RIVER (SRI 61)

PRODUCT SPECIFICATIONS



24 x 24 x 1 3/4"
(60 x 60 x 4.5cm)



18 x 24 x 1 3/4"
(45 x 60 x 4.5cm)



12 x 24 x 1 3/4"
(30 x 60 x 4.5cm)

Rivenstone®, Yorkstone® and Torino® are not recommended for vehicular traffic or vehicular snow plowing. Selection may vary by market.

DETAILS

JOINTING COMPOUND OPTIONS

POLYMERIC SAND

A special mix of graded sand and binder specifically formulated for achieving optimum lock up of pavers and slabs.

EASY-PRO™

Pre-mixed and ready to use, no haze formulation, that can be applied during dry or wet weather.

For joint widths from ¼" (6.3mm) and depths from 1 ¼" (30mm)

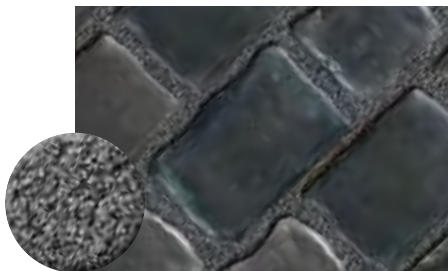
UNILOCK FLEXIBLE EPOXY MORTAR - D1

Many times stronger than polymeric, this high strength, yet flexible, epoxy mortar is suitable for medium traffic loads up to 7.5 tons. It is easy to install, self-compacting and can be applied during dry or wet weather and does not require additional expansion joints. For joint widths from ¼" (6.3mm) and depths from 1 ¼" (30mm).

JOINTING COLORS

Changing the jointing sand color can dramatically change the look and feel of the pavement surface. Various colors are available in traditional sands or polymer modified and epoxy modified compounds.

Courtstone® (Basalt / Belgian Blue)



BLACK SAND



TAN SAND



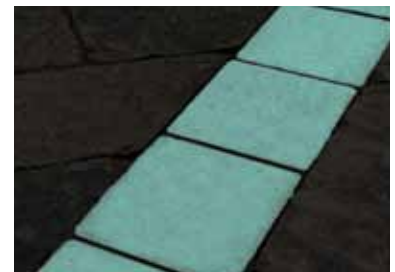
GREY SAND

NIGHTEC®

NighTec® is a subtle way to provide accent lighting on your project without wiring, batteries or charging. NighTec photo luminescent pavers glow from absorbed sunlight during the day and can be installed like any other unit paver.



NighTec® paver during daytime.



NighTec® paver during nighttime.

UNILOCK® PERMEABLE

More than twenty years ago, Unilock introduced the first permeable unit paver to North America. Since then, we've steadily increased the number of sizes, shapes, colors and architectural finishes available. Unilock permeable unit pavers are self-aligning, structural unit pavers with joint spacing that complies with the Americans with Disabilities Act and will stay true for years to come.

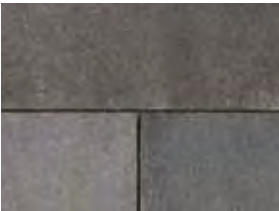


ECO-PRIORA™

This versatile, customizable, permeable unit paver is designed with special spacer bars. The resulting 7mm gap is filled with a clear, fine stone chip that allows the rapid penetration of rainwater into the sub-base and subsoil.



CUSTOM FINISH OPTIONS



BELPASSO®
Enamel Finish



UMBRIANO®
Mottled Finish



SERIES 3000®
Exposed Aggregate Finish



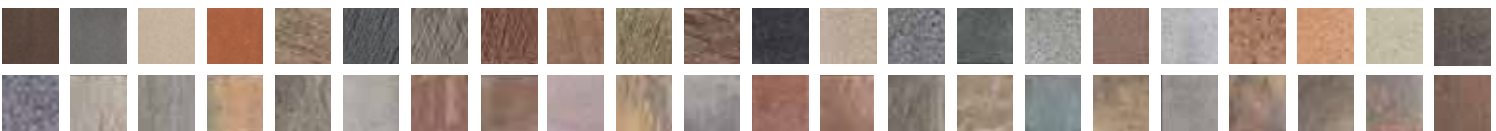
IL CAMPO®
Brushed Finish



SMOOTH/PREMIER
Finish

CUSTOM COLOR OPTIONS*

Ask your Unilock Representative about locally stocked colors.



PRODUCT SPECIFICATIONS



10 x 10 x 3 1/8"
(24 x 24 x 8cm)
SPECIAL ORDER



5 x 10 x 3 1/8"
(12 x 24 x 8cm)



5 x 5 x 3 1/8"
(12 x 12 x 8cm)
SPECIAL ORDER

Herringbone bundles available for mechanical installation in select markets. Ask your Unilock Representative for more details.

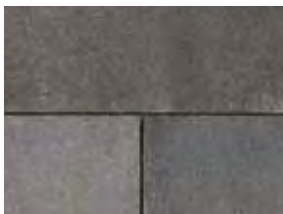
Eco-Priora can be manufactured in a variety of custom colors and textures. Minimum quantities will apply. Please contact your Unilock Representative for more details.*

ECO-OPTILOC™

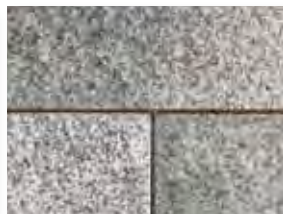
Utilizing 'tri-axis engineering' first introduced to North America by Unilock, Eco-Optiloc is one of the best solutions for vehicular pavements. It seamlessly combines both superior load-bearing properties and drainage capabilities.



CUSTOM FINISH OPTIONS



BELPASSO®
Enamel Finish



UMBRIANO®
Mottled Finish



SERIES 3000®
Exposed Aggregate Finish



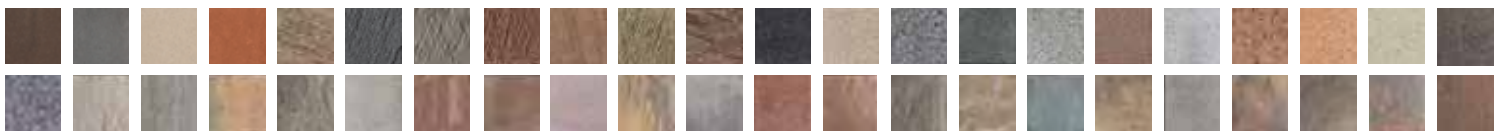
IL CAMPO®
Brushed Finish



SMOOTH/PREMIER
Finish

CUSTOM COLOR OPTIONS*

Ask your Unilock Representative about locally stocked colors.



PRODUCT SPECIFICATIONS



10 ¼ x 10 ¼ x 3 ⅛"
(26cm x 26cm x 8cm)

*Eco-Optiloc can be manufactured in a variety of custom colors and textures. Minimum quantities will apply. * Please contact your Unilock Representative for more details.
Designed for mechanical installation.*

ECO-LINE™

Permeable, heavy duty unit pavers have never been so 'on-trend'. With custom finish and color options and the ability to be mechanically installed, this product is not only beautiful, but cost effective.



CUSTOM FINISH OPTIONS



BELPASSO®
Enamel Finish

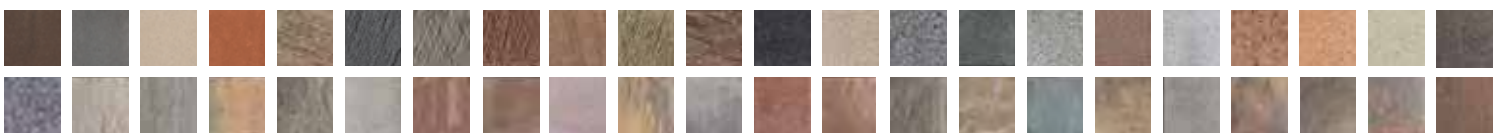
UMBRIANO®
Mottled Finish

SERIES 3000®
Exposed Aggregate Finish

IL CAMPO®
Brushed Finish

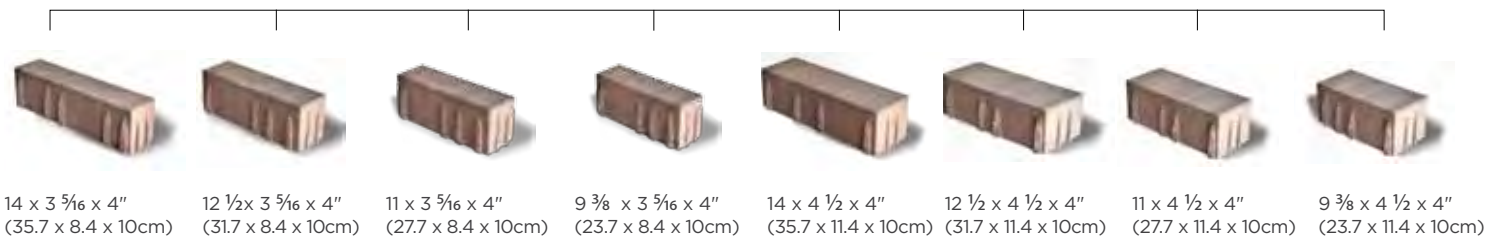
SMOOTH/PREMIER
Finish

CUSTOM COLOR OPTIONS*



PRODUCT SPECIFICATIONS

SPECIAL ORDER
RANDOM BUNDLE



*Eco-Line can be manufactured in a variety of custom colors and textures. Minimum quantities will apply. * Please contact your Unilock Representative for more details.
Designed for mechanical installation.*

ECO-PROMENADE™ PERMEABLE

Eco-Promenade plank paver brings the long linear look and feel to any contemporary permeable application while being capable of vehicular loads. Available in many custom finishes and colors to suit your project design.



*Eco-Promenade can be manufactured in a variety of custom colors and textures. See product details on page 32. Minimum quantities will apply. *Please contact your Unilock Representative for more details.*

THORNBURY™ PERMEABLE **ENDURACOLOR™**

Thornbury™ permeable has a modestly textured surface and three compatible sizes allowing for a pleasingly, random look and feel. Available in many stock colors, yet open to customization to complement your design.



*Thornbury is available in stock colors and custom colors. See product details on page 44. Minimum quantities will apply. *Please contact your Unilock Representative for more details.*

TOWN HALL™ PERMEABLE



ENDURACOLOR™
PLUS ARCHITECTURAL FINISHES



With ever increasing focus on permeable pavers, the Town Hall street paver has been designed to satisfy both traditional and permeable installation methods while maintaining a time-worn, historical and distressed appearance.



See product details on page 41. *Please contact your Unilock Representative for more details.

CITY PARK PAVER™ PERMEABLE



City Park Paver permeable is a traditional urban paver shape with the added benefit of being permeable and is available in many custom finishes and colors. This paver shape is a class-act no matter what the application, residential, park or plaza.



Non-permeable product shown

City Park Paver™ can be manufactured in a variety of custom colors and textures. See product details on page 38. Minimum quantities may apply. *Please contact your Unilock Representative for more details.

LEED® CREDIT OPPORTUNITIES

LEED, or Leadership in Energy & Environmental Design, is a green building certification program that recognizes best-in-class building strategies and practices that have a positive impact on the health of occupants, while promoting renewable, clean energy. To receive LEED certification, building projects satisfy prerequisites and earn points to achieve different levels of certification. Unilock products can help with your certification goals.

POTENTIAL LEED CREDITS FOR UTILIZING PERMEABLE PAVERS

SUSTAINABLE SITES: LEED 2009

Credits applicable to segmental concrete paving products for sustainable sites include the following:

Credit SS 6.1 Stormwater Design: Quantity Control • 1 point

Credit SS 6.2 Stormwater Design: Quality Control • 1 point

Credit SS 7.1 Heat Island Effect: Non-Roof • 1 point

Up to two points can be achieved in sustainable sites by using permeable, interlocking concrete pavers for stormwater management. An additional one point can be achieved by using either permeable interlocking concrete pavers or interlocking concrete pavers (non-permeable) that meet Albedo reflective tests.

RAINWATER MANAGEMENT: LEED V4

Up to three points can be achieved for retaining rainwater onsite based on the percentile kept. 85% (zero lot line projects only) • 3 points, 95% - 2 points and 98% - 3 points. (all except Healthcare - subtract one point)
See LEED v4 for more specific project/site details.

MATERIALS AND RESOURCES: LEED 2009

Credit MR 4.1 Recycled Content: 10% (post-consumer + 1/2 post-industrial) • 1 point for using Slag*

Credit MR 4.2 Recycled Content: 20% (post-consumer + 1/2 post-industrial) • 1 point in addition to 4.1

Credit MR 5.1 Regional Materials: 10% extracted, processed and manufactured regionally • 1 point

Credit MR 5.2 Regional Materials: 20% extracted, processed and manufactured regionally • 1 point in addition to 5.1

Up to four points can be achieved in materials and resources by using permeable interlocking concrete pavers or interlocking concrete pavers (non-permeable).

* Unilock uses slag cement replacement over fly ash to maintain color consistency. Recycled content must be discussed before specifying.

MATERIALS AND RESOURCES: LEED V4

Building Product Disclosure and Optimization - Sourcing of Raw Materials - Sourcing of Raw Materials and Extraction • 1 point

Building Product Disclosure and Optimization - Sourcing of Raw Materials - Leadership Extraction Practices • 1 point

Building Product Disclosure and Optimization - Material Ingredient Reporting- Material Ingredient Reporting • 1 point

Building Product Disclosure and Optimization - Material Ingredient Reporting - Material Ingredient Optimization • 1 point

Building Product Disclosure and Optimization - Environmental Product Declaration • 1 point

HEAT ISLAND REDUCTION - NON-ROOF: LEED 2009



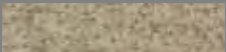

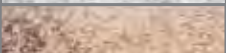





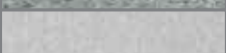




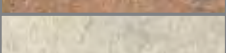
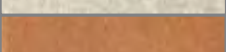

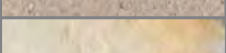
Credit SS 7.1 requires a minimum SRI of 29 for at least 30% of the site's impervious surfaces to achieve the credit.

HEAT ISLAND REDUCTION - NON-ROOF: LEED V4

Paving materials with a three-year aged solar reflectance (SR) value of at least 0.28. If three-year aged value information is not available, use materials with an initial SR of at least 0.33 at installation OR use an open grid pavement at least 50% pervious • 2 points (except Healthcare - 1 point)
See LEED v4 for more specific site calculations.

SOLAR REFLECTANCE

Solar Reflectance Index (SRI) is a criterion used by USGBC that measures values of sunlight and radiation bouncing from built surfaces. It is used to measure urban heat island effects in city centers. Dark pavement absorbs heat during the day and then releases it at night. This process creates a situation that causes urban centers to stay warmer all the time which contributes to air pollution and increased energy consumption. Careful selection of materials and colors can help reduce urban heat island effects.

SAMPLE OF QUALIFIED UNILOCK COLORS (>=29)				
Surface Finish	Color	Swatch	Solar Reflectance	SRI*
Belpasso® (enameled)	Crema		0.43	49
	Mediterraneo		0.35	38
Umbriano® (mottled)	Summer Wheat		0.42	48
	Winter Marvel		0.35	38
	Autumn Sunset		0.30	32
Series 3000® (exposed aggregate)	Chardonnay Tan		0.39	44
	Coral Gem		0.37	41
	Ice Grey		0.35	38
	Mineral Ice		0.31	33
	Platinum Grey		0.28	29
Smooth/Premier (any Unilock paver shape)	TX Active White		0.46	53
	Natural		0.29	31
Standard Finish	Nevada		0.31	33
	Natural		0.30	32
	Desert		0.29	31
	Nantucket		0.29	31
	Prairie		0.28	29
	Sandstone		0.28	29
Stonemark™ Finish	Iron River		0.52	61

Values may change slightly by region due to variations in local aggregate. Please be sure to contact your Unilock Representative for a comprehensive and current list of SRI product values.



RECYCLED CONTENT

SUPPLEMENTARY CEMENTITIOUS MATERIALS (SCM)

Concrete is a mixture of sand, coarse aggregate, water and the principal cementitious material which is Portland cement. Today, most concrete recipes also contain supplementary cementitious material (SCM) admixtures. These can be by-products from other processes or natural materials that may or may not have been further processed for use in concrete. These materials may include Fly Ash (Class C or F), Ground Granulated Blast Furnace Slag (GGBFS), Silica Fume, Natural Pozzolans, recycled glass and more.

These admixtures can contribute toward achieving the cumulative minimum recycled content criteria for Leadership Extraction Practices.

Speak with your Unilock Representative about local SCM's available for custom orders.

PROJECT: United Nations. New York, New York.
DESIGN: di Domenico + Partners LLP
PRODUCT: Ecoloc® permeable pavers

The United Nation Secretariat building in Manhattan replaced its 60 year old single pane glass window panels with double-glazed panels as part of their green mandate. The old window glass was ground into a 'pozzolan' called Pozzotive and used to replace 20% of the portland cement in Unilock's permeable pavers. Pozzolan (SCM) is an environmentally friendly cement replacement made entirely of post consumer recycled glass.

According to the United States Environmental Protection Agency (USEPA), about 12 million tons of glass are brought to landfills each year. Pozzotive SCM/Pozzolan creates a solution to divert glass from landfills and transform what was once a waste product into a valuable resource that reduces our carbon footprint.

ROOF DECKS LARGE FORMAT PAVING

Unilock offers a full line of architectural roof pavers with several EnduraColor™ and EnduraColor™ Plus Architectural Finish options that were traditionally designed for on-grade applications. This creates a harmonious looking project between building outdoor spaces and site paving. Unilock architectural roof pavers are manufactured in four thicknesses and range from 19 lbs/sq.ft. to 46 lbs/sq.ft. to accommodate various roof structural weight limits. Each is manufactured to exceed minimum flexural strength requirements of both the ASTM* C293 and CSA** A231.1, to be placed on pedestal systems.

Paver Thickness	ASTM C140 Compressive Strength	ASTM C140 Water Absorption	ASTM C1645 Freeze/Thaw†	ASTM C293 Flexural Strength	CSA 231.1 Flexural Strength
1¾"	8,500 PSI MIN.	5% MAX.	< 500 G/M2	>1,000 PSI MIN.	>650 PSI MIN.
2"	8,500 PSI MIN.	5% MAX.	< 500 G/M2	>1,000 PSI MIN.	>650 PSI MIN.
2¾"	8,500 PSI MIN.	5% MAX.	< 500 G/M2	>1,000 PSI MIN.	>650 PSI MIN.
4"	8,500 PSI MIN.	5% MAX.	< 500 G/M2	>1,000 PSI MIN.	>650 PSI MIN.

UNILOCK ARCHITECTURAL ROOF PAVER OPTIONS

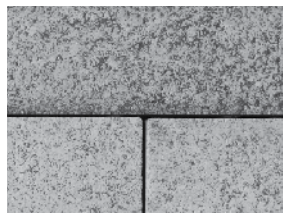
† Results after 49 cycles

Paver Thickness	Available Finishes	Available Sizes	Product Weight
1¾"	Rivenstone™ Torino™ Yorkstone™	24" x 24" 12" x 24" 18" x 24" 18" x 18"	19lbs/sq.ft.
2"	Umbriano® † Series 3000® † Il Campo® † EnduraColor™	24" x 24"	22lbs/sq.ft.
2¾"	Umbriano® † Series 3000® † Il Campo® † EnduraColor™	24" x 24" 12" x 24" 16" x 16"	31lbs/sq.ft.
4"	Umbriano® † Series 3000® † Il Campo® † EnduraColor™	36" x 36"	46 lbs/sq.ft.

† special order only (verify locally manufactured finishes with your Unilock Representative)

All sizes are nominal. Verify actual paver dimension to establish grid spacing.

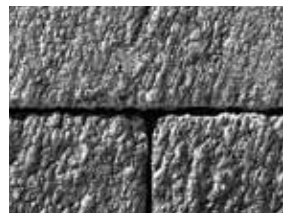
AVAILABLE FINISHES



UMBRIANO®
Mottled Finish



SERIES 3000®
Exposed Aggregate Finish



IL CAMPO®
Brushed Finish



ENDURACOLOR™
Smooth/Premier Finish



RIVENSTONE™
Flagstone Finish



TORINO™
Thermal Finish



YORKSTONE™
Limestone Finish

Contact your Unilock Representative to determine available finishes and colors in your region.

*ASTM – American Society of Testing and Materials **CSA – Canadian Standards Association

PEDESTAL SYSTEMS

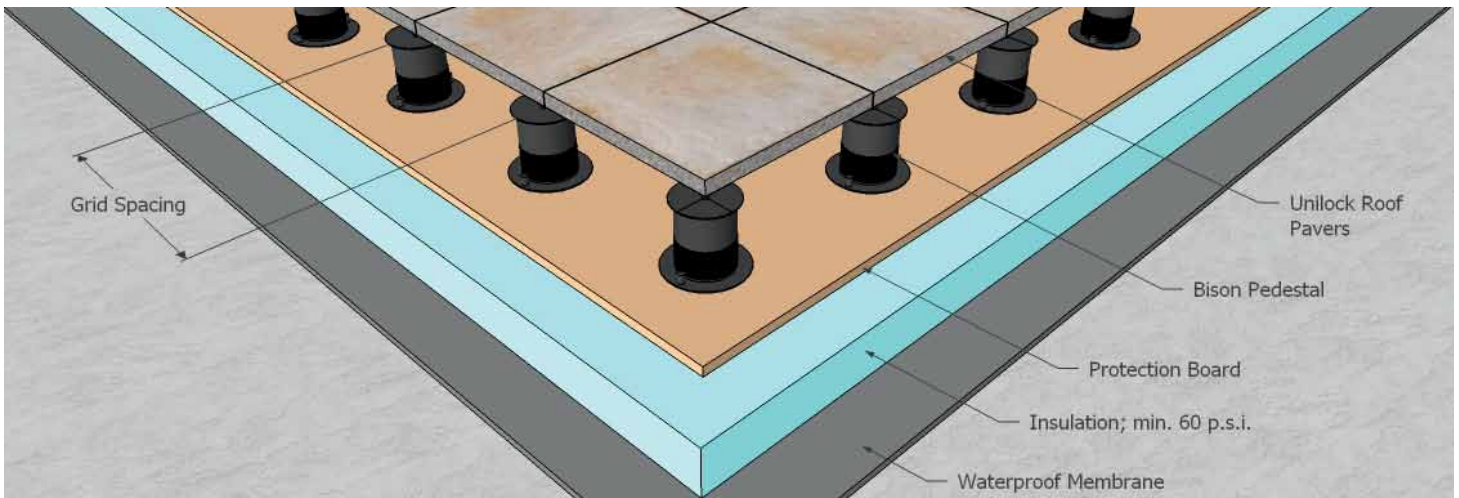
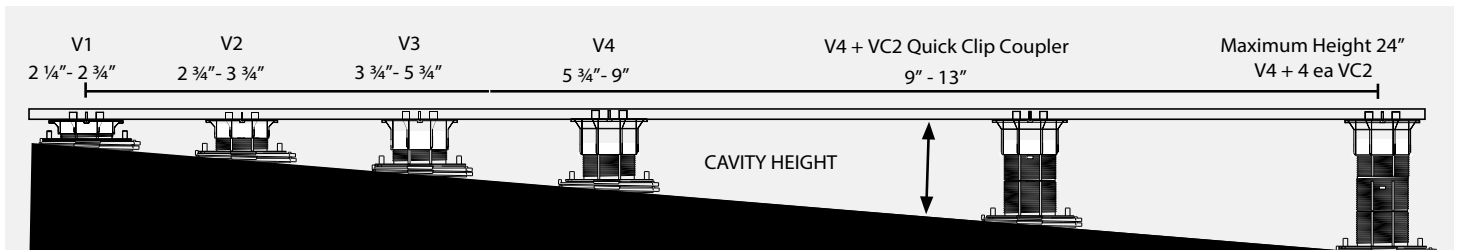
As an authorized distributor of Bison Innovative Products, Unilock can provide required pedestals and accessories.

VERSADJUST

- Supports heaviest load 1250 lbs per pedestal (FS:3)
- Integrated leveler accommodate zero to 0.5"/foot slope
- Height adjustment ranges from 2 1/4" to 36"
- Accessories for heights from 1/8" to 2 1/4"
- Contains 20% post industrial recycled material
- Impervious to water, mold and freeze/thaw
- Made in U.S.A.

LEVEL-IT

System available for height adjustment ranges from 1/8" to 12" and supports heaviest loads of 750 lbs per pedestal (FS:3).



APPLICATION BY SIZE, BY THICKNESS AND PRODUCT

The aspect ratio of the paver unit (length / height = aspect ratio) directly correlates to the recommended usage. A ratio of 3:1 or less is recommended for Commercial and Heavy-Duty Vehicular applications, 4:1 for Residential and Light-Duty Vehicular applications, and over 5:1 for Pedestrian only. Reference the chart below as a guideline and contact your Unilock Representative for more information.

Product	Product Size	Thickness	Pedestrian	Commercial Pedestrian*	Light-Duty Vehicular	Commercial Vehicular	Heavy-Duty	Permeable
	36 x 36	10 cm	✓					
	24 x 24	15 cm	✓	✓	✓			
	24 x 24	10 cm	✓	✓	✓			
	24 x 24	7 cm	✓					
	24 x 24	5 cm	✓					
	24 x 24	4.5 cm	✓					
	18 x 24	4.5 cm	✓					
	18 x 18	4.5 cm	✓					
	16 x 24	10 cm	✓	✓	✓**			
	12 x 24	15 cm	✓	✓	✓	✓	✓	
	12 x 24	10 cm	✓	✓	✓**			
	12 x 24	7 cm	✓					
	12 x 24	5 cm	✓					
	12 x 24	4.5 cm	✓					
	8 x 24	15 cm	✓	✓	✓			
	8 x 24	10 cm	✓	✓	✓**			
	6 x 24	15 cm	✓	✓	✓	✓	✓	
	6 x 24	7 cm	✓					
	16 x 16	10 cm	✓	✓	✓	✓		
	16 x 16	8 cm	✓	✓	✓			
	16 x 16	7 cm	✓	✓	✓			
	8 x 16	10 cm	✓	✓	✓	✓		
	8 x 16	7 cm	✓	✓	✓			
	4 x 16	10 cm	✓	✓	✓	✓		
	12 x 12	10 cm	✓	✓	✓	✓		
	12 x 12	8 cm	✓	✓	✓			
	12 x 12	7 cm	✓	✓	✓			
	12 x 12	4.5 cm	✓					
	6 x 12	10 cm	✓		✓	✓	✓	
	6 x 12	8 cm	✓	✓	✓	✓		
	6 x 12	7 cm	✓	✓	✓			
	10 x 10	8 cm	✓	✓	✓	✓		✓
	5 x 10	8 cm	✓	✓	✓	✓	✓	✓
	8 x 8	7 cm	✓	✓	✓	✓		
	6 x 8	7 cm	✓	✓	✓	✓	✓	
	4 x 12	10 cm	✓	✓	✓	✓	✓	
	4 x 12	8 cm	✓	✓	✓			
	4 x 12	7 cm	✓	✓	✓			
	3 x 12	10 cm	✓	✓	✓	✓	✓	✓
	6 x 6	8 cm	✓	✓	✓	✓		
	6 x 6	7 cm	✓	✓	✓	✓		
	5 x 5	8 cm	✓	✓	✓	✓		✓
	4 x 8	8 cm	✓	✓	✓	✓	✓	
	4 x 8	7 cm	✓	✓	✓	✓		
	4 x 8	6 cm	✓	✓	✓			
	4 x 4	7 cm	✓	✓	✓	✓		
	3 x 6	10 cm	✓	✓	✓	✓	✓	
Anchorlock [®]		8 cm	✓	✓	✓	✓	✓	
Artline™		7 cm	✓					
Artline™		10 cm	✓	✓	✓			
Avante Ashlar™		7 cm	✓	✓	✓			
Bristol Valley™		6 cm	✓					
Brussels Block [®]		7 cm	✓	✓	✓			
Brussels Dimensional™ Paver		10 cm	✓	✓	✓	✓		
City Park Paver™		7 cm	✓	✓	✓	✓		✓ (8cm)
Copthorne [®]		6 cm	✓	✓	✓	✓		
Courtstone [®]		6 cm	✓	✓	✓	✓		
Dura-Mat™		10 cm			✓			✓
Eco-Line™		10 cm	✓	✓	✓	✓	✓	✓
Eco-Optiloc™		8 cm	✓	✓	✓	✓	✓	✓
Optiloc [®]		8 cm	✓	✓	✓	✓	✓	
Richcliff [®]		6 cm	✓	✓	✓	✓		
Thornbury™		7 cm	✓	✓	✓			✓
Town Hall™		7 cm	✓	✓	✓	✓		✓

All pavements require a site specific design.

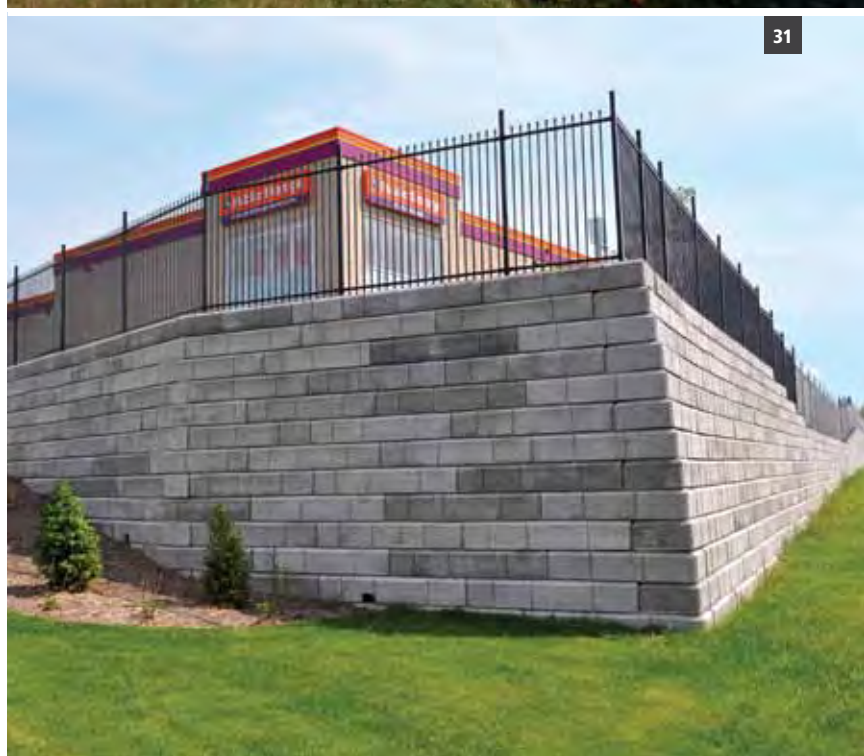
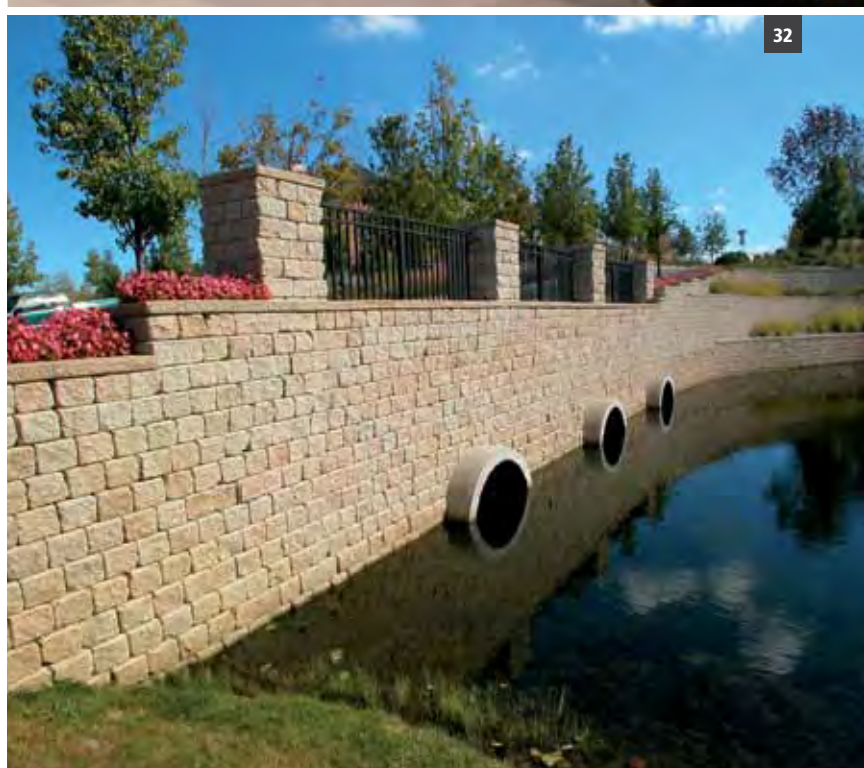
A Herringbone laying pattern is essential for most vehicular trafficked pavements and becomes more critical as the demands on the pavements increase. Please contact your local Unilock Representative for specific design details. This chart is only a guideline.

* subject to occasional light duty service vehicles

** installed on a concrete base

UNILOCK[®] RETAINING WALLS

A great retaining wall should provide an aesthetic that blends subtly with the environment and surrounding architecture. Segmental retaining walls have been the choice of Landscape Architects, Designers and Engineers who are looking for classic, clean lines and timeless appeal. With two new walls added to the collection in 2015, now there is a wall for every design vision.



BELMURO®

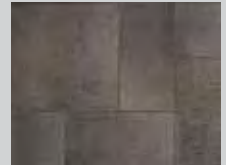
Belmuro is the answer for your contemporary wall designs. Available by custom order in the Umbriano® finishes it will easily complement or harmonize with your paver design. Natural stone or Ledgestone™ coping are perfect design partners. Ask your Unilock Representative for more detailed information.



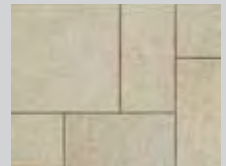
WALL FINISH UMBRIANO SPECIAL ORDER



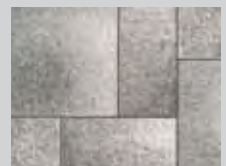
AUTUMN SUNSET (SRI 32)



MIDNIGHT SKY



SUMMER WHEAT (SRI 48)



WINTER MARVEL (SRI 38)

PRODUCT SPECIFICATIONS



FULL UNIT
20 x 10 x 6 1/2"
50.5 x 25.2 x 16.5cm



HALF UNIT
10 x 10 x 6 1/2"
25.2 x 25.2 x 16.5cm



CORNER UNIT
20 x 10 x 6 1/2"
50.5 x 25.2 x 16.5cm



HALF CORNER UNIT
10 x 10 x 6 1/2"
25.2 x 25.2 x 16.5cm

LINEO DIMENSIONAL STONE™

Contemporary and sleek lines define Lineo Dimensional Stone with a linear multi-length plank look. Ideal for garden walls, pillars and other outdoor vertical elements, Lineo Dimensional Stone offers up modern design and exceptional flexibility.



FOUR UNITS
12, 16, 20, 24 x 8 x 4 "
30, 40, 50, 61 x 20 x 10cm

Ask your Unilock Representative about custom and local color availability.

RIVERCREST™ WALL

Unilock's most natural, versatile and easy-to-use wall system. The unique engineered S-shape and patent pending design creates vertical and lateral interlock for added strength, making it ideal for retaining walls up to 1.8m (6.0') when combined with geogrid reinforcement.



WALL FINISH RIVERCREST



BUFF



COASTAL SLATE



IRONWOOD

PRODUCT SPECIFICATIONS

RANDOM



STANDARD UNIT 1
8 x 9-10 x 2 1/4"
20 x 23-25 x 5.7cm



STANDARD UNIT 2
12 x 9-10 x 2 1/4"
31 x 23-25 x 5.7cm



STANDARD UNIT 3
12 x 9-10 x 2 1/4"
31 x 23-25 x 5.7cm



STANDARD UNIT 4
17 x 9-10 x 2 1/4"
42.5 x 23-25 x 5.7cm

JUMPER BUNDLE



JUMPER UNIT 1
8 x 9-10 x 4 1/2"
20 x 23-25 x 11.4cm



JUMPER UNIT 2
12 x 9-10 x 4 1/2"
31 x 23-25 x 11.4cm



JUMPER UNIT 3
12 x 9-10 x 4 1/2"
31 x 23-25 x 11.4cm



STANDARD UNIT 4
17 x 9-10 x 4 1/2"
42.5 x 23-25 x 11.4cm

CORNER BUNDLE



LONG CORNER UNIT
12 x 9-10 x 2 1/4"
31 x 23-25 x 5.7cm



SHORT CORNER UNIT
10 x 9-10 x 2 1/4"
25 x 23-25 x 5.7cm



JUMPER CORNER UNIT
12 x 9-10 x 4 1/2"
31 x 23-25 x 11.4cm



COPING
22 x 11 x 2 1/4"
56 x 28 x 5.7cm



PILLAR UNIT

Ask your Unilock Representative about local color availability.



reddot design award
winner 2013

PISA2[®]/CONCORDWALL[™]

The built-in setback design of Pisa2/Concord Wall automatically forms the correct slope, ensuring a highly stable retaining wall. Utilizing the tapered components, you can form curved walls and steps. Gravity walls up to 3.5 ft (1m) and grid re-inforced walls up to 25 ft (7.5m) high under typical conditions.



For detailed product information and local color availability contact your Unilock Representative.

ROMANPISA[®]/ROMANWALL[®]

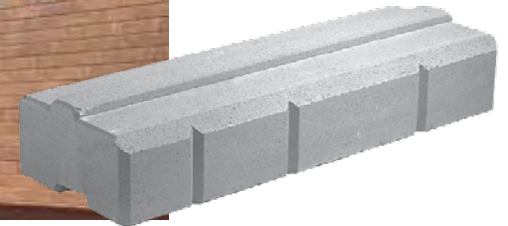
RomanPisa boasts a distressed appearance that gives the impression that it has been around for decades. Admired for versatility and style RomanPisa can be used to form straight or curved walls, as well as planters and steps. Gravity walls up to 3.5 ft (1m) and grid reinforced walls up to 25 ft (7.5m) high under typical conditions.



For detailed product information and local color availability contact your Unilock Representative.

DURAHOLD®

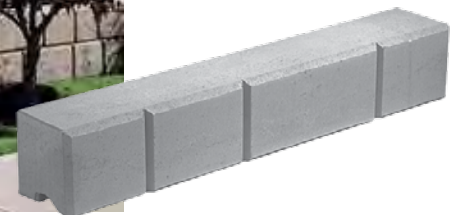
The large size of DuraHold® (1680lbs./762kg.) makes it an appropriate choice for demanding structures up to 40ft. (12.2m). Proper engineering and a good selection of components make this an exceptional wall system for gravity, tie-back or grid reinforced walls. A great alternative to “poured in place” concrete. Gravity walls up to 6 ft (1.8 m) in typical conditions.



For detailed product information and local color availability contact your Unilock Representative.

DURAHOLD2®

DuraHold2® is similar to DuraHold® in appearance, but is almost half the size, (820lbs./363kg.), making it economical for low walls. Concrete tiebacks or Geogrid reinforcement expands the various engineering options, allowing for structures up to 25 ft. (7.62m) high. Gravity walls up to 4 ft (1.2 m) in typical conditions.



For detailed product information and local color availability contact your Unilock Representative.

SIENASTONE®

This big, bold stone is impressive as a wall or as treads in large outdoor staircases. SienaStone's long lines and split face appearance make it an attractive alternative for heavier load bearing applications.

Gravity walls up to 10 ft (3m) or grid reinforced up to 40 ft (12m) under typical conditions.



For detailed product information and local color availability contact your Unilock Representative.

PHOTO INDEX

#	Project Name	City	State	Product	Project Size	Designer	Page
1	Hilliard Roundabout	Columbus	OH	Courtstone	16,500	James Burkhart	4 / 39
2	West Union Green Streets	West Union	IA	Eco-Priora with Series 3000 and TX Active finish / Eco-Optiloc	205,000	Conservation Design Forum	5
3	King Street	Kitchener	ON	Umbriano	60,000	IBI Group	5
4	Hullmark Condo Retail	Toronto	ON	Il Campo / Series 3000 / Optiloc	21,000	The MBTW Group	6
5	Shops at Don Mills	Toronto	ON	Umbriano / Il Campo / Series 3000	80,000	Quinn Design Associates, Inc.	7
6	Assembly Row	Somerville	MA	Il Campo	50,000	Copley Wolff Design Group	7
7	Public Plaza at CN Tower	Toronto	ON	Il Campo / Umbriano	70,000	IBI Group L.A. Graham Infrastructure LP	8 / 11
8	University of Michigan Football Stadium	Ann Arbor	MI	Eco-Priora	15,000	Hamilton Anderson Associates	9
9	University of Connecticut	Mansfield	CT	Umbriano - custom color	3,000	Copley Wolff Design Group	9
10	Liberty Village	Toronto	ON	Thornbury	2,000	PMA Landscape Architects	10 / 53
11	Ship Street Square - Brown University	Providence	RI	Copthorne - custom color	17,000	Imelk	11
12	University of Toronto - Mississauga Campus	Mississauga	ON	Series 3000	3,000	Fleisher Rideout Partnership Landscape Architects	11
13	Trump Park Stamford	Stamford	CT	Umbriano	10,000	Wesley Stout Associates	12
14	Cornell Community Centre & Library	Markham	ON	Il Campo	20,000	The MBTW Group	13
15	Cleveland Ohio Transportation Authority COTA	Columbus	OH	Eco-Optiloc / Umbriano	20,000	Schieber & Associates	13
16	Hubbard Place	Chicago	IL	Umbriano / Il Campo / Series 3000	14,200	Daniel Weinbach & Partners, LTD	14
17	MBTA Wonderland Pedestrian Bridge	Revere	MA	Umbriano - custom color	20,000	Arrowstreet	15
18	Hullmark Condo Roof Deck	Toronto	ON	Europaver / Series 3000	11,500	The MBTW Group	15
19	University of Chicago - 58th Street West	Chicago	IL	Umbriano - custom color	21,700	Site Design Group	16
20	Palos Community Hospital	Palos Heights	IL	Holland Premier - custom color	24,000	Jacobs/Ryan Associates Matthei & Colin Associates	17
21	Loyola University - Kenmore Avenue	Chicago	IL	Eco-Priora - custom colors	20,350	SmithGroup JJR	17
22	Chicago Marriott Naperville	Naperville	IL	Umbriano	5,500	K&D Landscape Management, Inc. Signature Design Group	18
23	Saddle & Cycle Club	Chicago	IL	Eco-Priora - Il Campo finish / Umbriano	38,000	Daniel Weinbach & Partners, LTD	19
24	Fairmont Hotel	Chicago	IL	Belpasso	5,000	Babco Construction Strategic Hotels and Resorts	19
25	Union Plaza & Bremner Avenue	Toronto	ON	Promenade Plank Paver - custom color	170,000	gh3, Ferris, NAK, MBTW	20
26	RIPTA Para Transit Maintenance Facility	Providence	RI	Eco-Optiloc	46,500	RGB	21
27	Easton Gateway parking lot	Columbus	OH	Eco-Optiloc	220,000	EMH&T	21
28	Bushnell's Basin at Canal Walk	Rochester	NY	Eco-Optiloc	3,000	Parrone Engineering	22
29	Grove Street	Downers Grove	IL	Eco-Optiloc / Eco-Priora	20,000	Village of Downers Grove Public Works Department	23
30	Honors Complex University of Massachusetts	Amherst	MA	Eco-Priora	23,000	Stantec	23
31	Public Storage	Richmond Hill	ON	DuraHold	7,000	Risi Stone Systems	24 / 61
32	Highland Fields	Burr Ridge	IL	RomanPisa	3,000	Wehler Peterson & Associates	25 / 61

#	Project Name	City	State	Product	Project Size	Designer	Page
33	Private Residence	St. Charles	IL	Rivercrest Wall	1,000	Rivas Landscaping	25
34	Hyatt Regency Chicago	Chicago	IL	Belpasso	16,000	Bentel & Bentel / BauerLatoza Studio	28 / 33
35	Distillery District	Toronto	ON	Town Hall	22,000	The Planning Partnership	28 / 41
36	Navy Pier	Chicago	IL	Promenade Plank Paver / Eco-Promenade with Series 3000 custom finish	175,000	James Corner Field Operations	28
37	Broad Art Museum at Michigan State University	East Lansing	MI	Promenade Plank Paver - Umbriano finish	17,000	Hamilton Anderson Associates	32
38	233 North Michigan	Chicago	IL	Umbriano	37,000	Wolff Landscape Architecture, Inc	34
39	Hillfield Strathallan College Courtyard	Hamilton	ON	Il Campo	5,500	Moryama & Toshima Architects	35
40	Storrs Center	Mansfield	CT	Series 3000 / Eco-Priora with Series 3000 finish	14,000	Kent + Frost Landscape Architecture	37
41	Ontario Square at York Quay	Toronto	ON	City Park Paver with Series 3000 finish	80,000	MVVA	38 / 54
42	Main Street	Ancaster	ON	Copthorne	6,000	City of Hamilton's Landscape Architect Dave Zimmer	40
43	Pittsburgh Theological Seminary	Pittsburgh	PA	Richcliff	750	LaQuatra Bonci Associates	42
44	Private Residence	Toronto	ON	Artline	500	McCartney Landscaping	43
45	Mohawk College	Ancaster	ON	Thornbury	15,000	IBI Group L.A.	44
46	Private Residence	Overath	DE	Bristol Valley	1,500	Metten	45
47	3rd Street	Niagara Falls	NY	Brussels Block / Series 3000	7,000	MKSK	46
48	CPD Mary Bartelme Park (Park 542)	Chicago	IL	Eco-Priora with TX Active finish	15,000	Site Design Group	49
49	North Central College	Chicago	IL	Town Hall	18,000	Hitchcock Design Group / Cemon, Ltd.	49 / 54
50	Grand Traverse Fire Station	Grand Traverse	MI	Eco-Optiloc	15,000	Gourdie - Fraser, Inc.	49
51	Bo City Market	Cedar Rapids	IA	Eco-Priora - standard finish	20,000	Sunberg Design	50
52	Aurora Police Station	Aurora	IL	Eco-Optiloc with Series 3000 finish	90,000	Cordogan, Clark & Associates	51
53	Unilock Pickering Plant	Pickering	ON	Eco-Line - custom color	9,000	Unilock	52
54	Navy Pier	Chicago	IL	Eco-Promenade with Series 3000 finish	20,400	James Corner Field Operations	53
55	Maple Go Station	Maple	ON	SienaStone	9,000	Risi Stone Inc.	61
56	Private Residence	Shelby Township	MI	Rivercrest Wall	1,500	Visionary Landscaping Design Build	63
57	Mill Street	Halton Hills	ON	Pisa2 / Concord Wall	1,500	Town of Halton Hills	64
58	Private Residence	Foxboro	MA	RomanWall / RomanPisa	2,800	Curbs, Inc	64
59	Home Depot Warehouse	Vaughan	ON	DuraHold	13,000	Risi Stone Inc.	65
60	Charles H. Wright Museum of African American History	Detroit	MI	DuraHold2	1,000	owner	65
61	University of Michigan	Ann Arbor	MI	SienaStone	5,000	SmithGroup JJR	65
62	Waterloo Courthouse	Waterloo	ON	Series 3000 - custom	20,000	Dillon Consulting	70
63	Main Street	Markham	ON	Copthorne / Town Hall	40,000	M & M Design Consultants	70
64	Barclays Center Arena	Brooklyn	NY	Belpasso - custom	40,000	Forest City Ratner / SHoP Architects	70



UNILOCK PROJECT SUPPORT

Take advantage of our years of industry leading expertise and unparalleled personal attention and collaboration, to ensure every intricate detail of your project runs smoothly. Our level of support is tailored to meet your needs, including:

- | Product customization
- | Budget pricing
- | Providing specifications, cross sections and details
- | Lunch and Learn continuing education credits
- | Samples
- | Outdoor Idea Centers



CUSTOM OPTIONS

Every project is unique. We have the expertise, technology and capabilities to create just what you need. Talk to your local representative about combining the many shapes, finishes and colors offered by Unilock to create the ideal product for your project.

UVISION AND SAMPLES

Choosing the perfect product to complete your vision has never been easier. Our Uvision™ sample sheets are true-to-life-scale and color sample sheets to help facilitate your initial product selection. And when the time comes to finalize your selections, your Unilock Representative will bring you all the real life samples you need.

OUTDOOR IDEA CENTERS

Unilock's Outdoor Idea Centers provide you with the perfect place for inspiration and a great destination for client feedback. When you visit be sure to see, touch and experience all that Unilock has to offer and ask our knowledgeable team any questions you have.

LUNCH AND LEARN

At Unilock there is always something new. Ask your Unilock Representative about a Lunch and Learn session that also earns you valuable continuing education credits.

We're here to help through every step of your project. Talk to your Unilock Representative today to get all the details.



INDEX

- Academic and Healthcare..... 16
- Artline™ 43
- Application Chart..... 60
- Bristol Valley™ 45
- Belmuro® 62
- Belpasso® 33
- Brussels Block™ 46
- City Park Paver™ 38
- City Park Paver™ Permeable 54
- Color Options..... 31
- Commercial Retail..... 6
- Concord Wall™ 64
- Copthorne® 40
- Courtstone® 39
- Custom Product Options 28
- DuraHold® 65
- DuraHold2® 65
- Eco-Line™ 52
- Eco-Optiloc™ 51
- Eco-Priora™ 50
- Eco-Promenade™ 53
- EnduraColor™ & EnduraColor™ Plus 26
- Finishing Options 30
- Golf Courses and Resorts..... 18
- Heavy Duty and Parking Lots..... 20
- Il Campo® 35
- Jointing Compound Options 48
- Large Format Paving for Roof Deck 58
- LEED..... 55
- Lineo Dimensional Stone™ 62
- Nightec® 48
- Offices and Condominiums..... 12
- Parks and Recreation 8
- Pedestal Systems 59
- Permeable..... 22
- Permeable Pavers 49
- Photo Index..... 66
- Pisa2® 64
- Product Selections 32
- Project Support..... 68
- Promenade™ Plank Paver 32
- Recycled Content..... 57
- Retaining Walls..... 61
- Richcliff® 42
- Rivenstone™ 47
- Rivercrest™ Wall..... 63
- Roof Decks 14
- RomanPisa® 64
- RomanWall® 64
- Segmental Retaining Walls..... 24
- Series 3000® 36
- SienaStone® 65
- Size Options..... 29
- Streetscapes 4
- Thornbury™ 44
- Thornbury™ Permeable 53
- Torino™ 47
- Town Hall™ 41
- Town Hall™ Permeable..... 54
- Umbriano® 34
- Unilock Technologies 26
- Urban Plazas 10
- Yorkstone™ 47





PROJECT: Northeastern Illinois University, Chicago, IL.
DESIGN: Site Design Group, Ltd.
PRODUCT: 24 x 24" Umbriano® & Smooth/Premier





COMMERCIAL.UNILOCK.COM | 1-800-UNILOCK

BOSTON
(508) 278-4536

CLEVELAND
(330) 927-4000

NEW YORK
(845) 278-6700

BUFFALO
(716) 822-6074

DETROIT
(248) 437-7037

TORONTO
(416) 646-9000

CHICAGO
(630) 892-9191

MILWAUKEE
(262) 742-3890