



# ARCHITECTURE & INTERIOR DESIGN

projects by TheeAe

# FIRM PROFILE

TheeAe is abbreviation of the evolved of architectural eclectic. Its name is ideas and dedication to create unique architecture, since 2010 started from New York, NY, USA and moved to Hong Kong for aiming Asia market at the same year. Our goal has been always the idea of that the new always gives joy to people beyond our goal of creativity, the team begins designing with well thought of environmental and functional studies by the requirements from clients. Its outcome is out of well mingled practicality with aesthetics, functional programs, cost and sustainability.

Our leader, Chris WH Cho had been working with variety of projects under internationally well known firm in New York, SOM and studied in his master in Virginia Tech, USA, one of top 10 schools in the nations. His experience with TheeAe has been led him even broader and more abundant to understand projects to meet clients requirements by quality design until completion of the project.

He always finds a new way of design approach as his ideas are the environmental and sustainable design to embrace cultural and historical aspect of design elements. As he believes "the creativity is the ability to introduce order into the randomness of nature" (by philosopher Eric Hoffer), his design seeks organic approach which the buildings are evolved as they are developed by the change of function and use as time goes by. This eventually will produce the architecture as a new creation. That is our language we call TheeAe.

As for our dedication, TheeAe will follow up clients' requirements for the best suitable architectural space with evolved plans to gain international recognition through each project we are involved in. Our commitment will create masterpieces. That's our loyalty to the prospective clients.

With the passion in architectural design, our service will continue to provide superior architectural design from interior news stand, single house, office and residential tower, hotel, museum, library, shopping malls, airport, and landscape to urban design.





69

GVK

→	✈	69
↑	✈	70-84





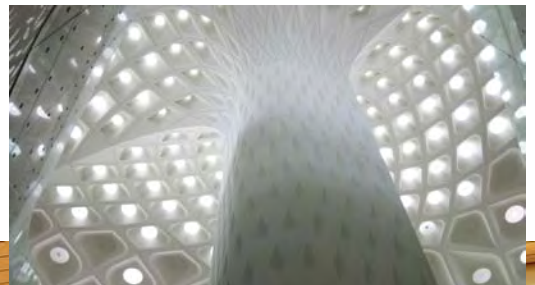




# INTERNATIONAL AIRPORT ARCHITECTURE & INTERIOR

Mumbai, India ( Previous Work in SOM )

450,000 sm / 45m Height / L1 ~ L4 Level / Completion 2014







## BALAGIO & MANDARIN ORIENTAL HOTEL

Mumbai, India ( Previous Work in SOM )

215,000 sm / 68m Height / B3 ~ L17 Level









# OLYMPIA 66, SHOPPING MALL

Dalian, China (Previous Work in Aedas LTD. Hong Kong)

350,000 sm / 40 m Height / B4~L8 Level











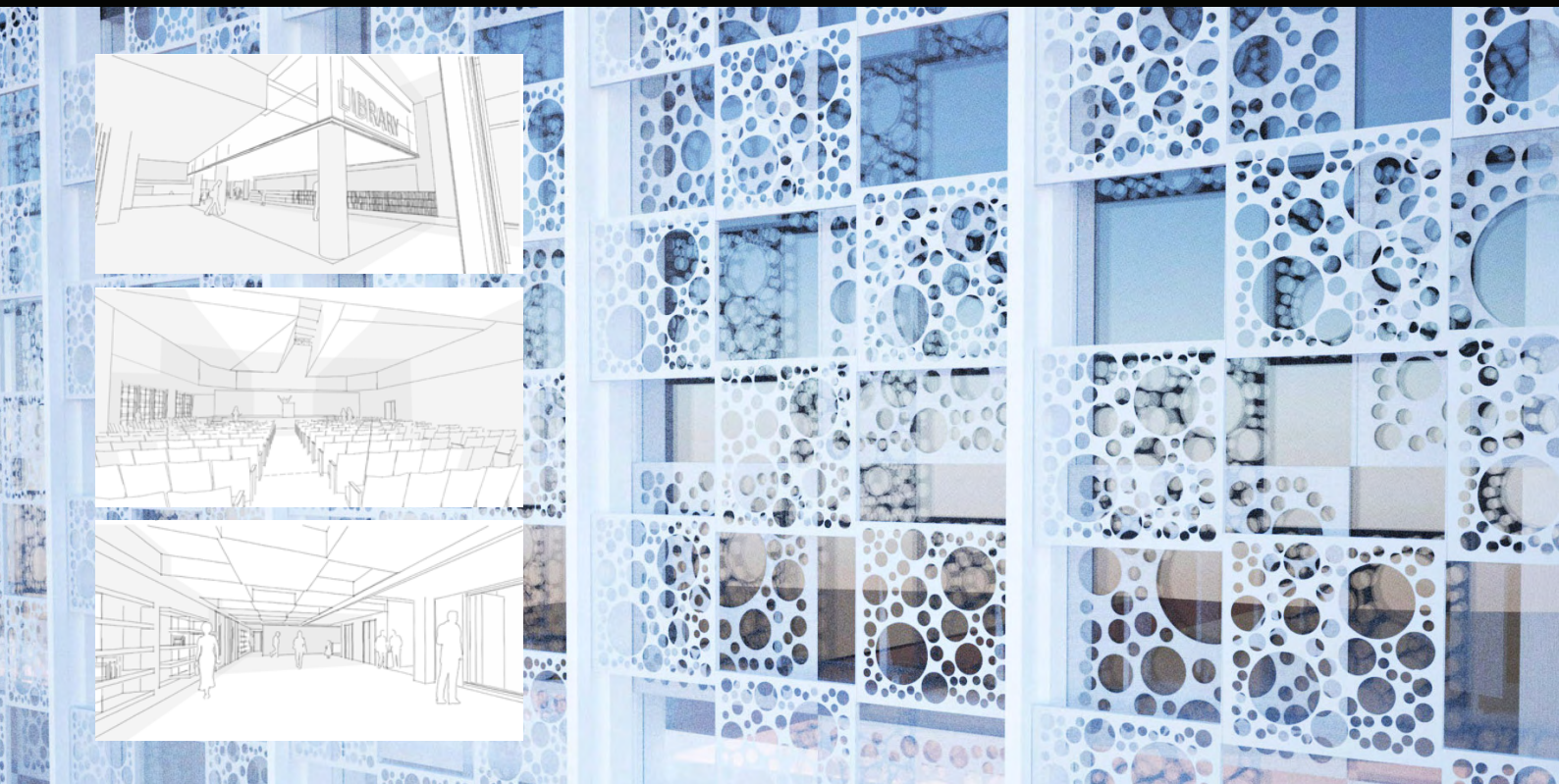
# LOCAL COMMUNITY CHURCH / CULTURAL CENTER

Daegu, South Korea

3800 sm / 18m Height / L1~ L4 Level / Commissioned











## MTR STATION 20 & PARK

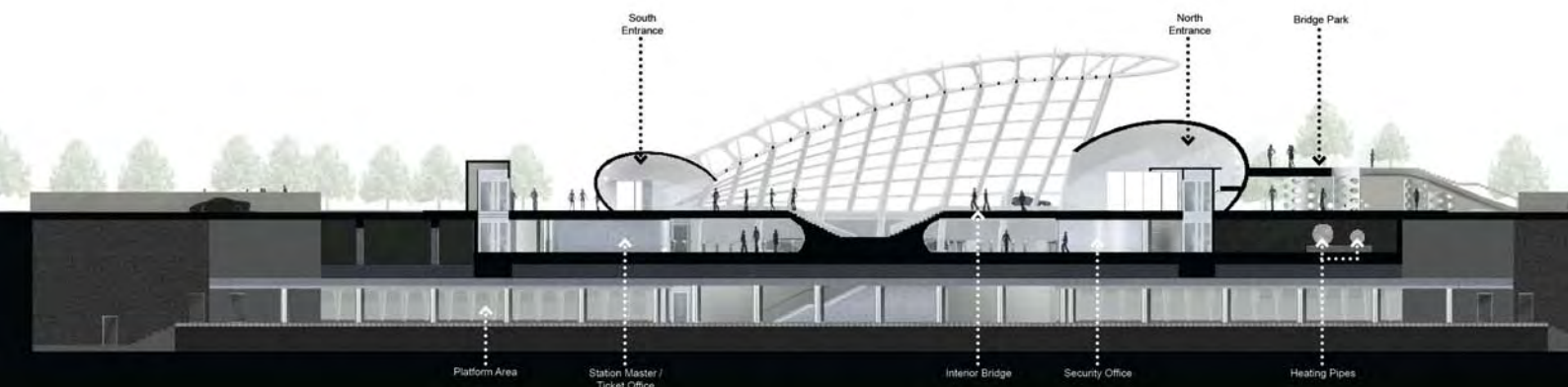
Sofia, Bulgaria ( Previous Work in SOM )

12,400 sm / 10m Height / B3 ~ L1 Level

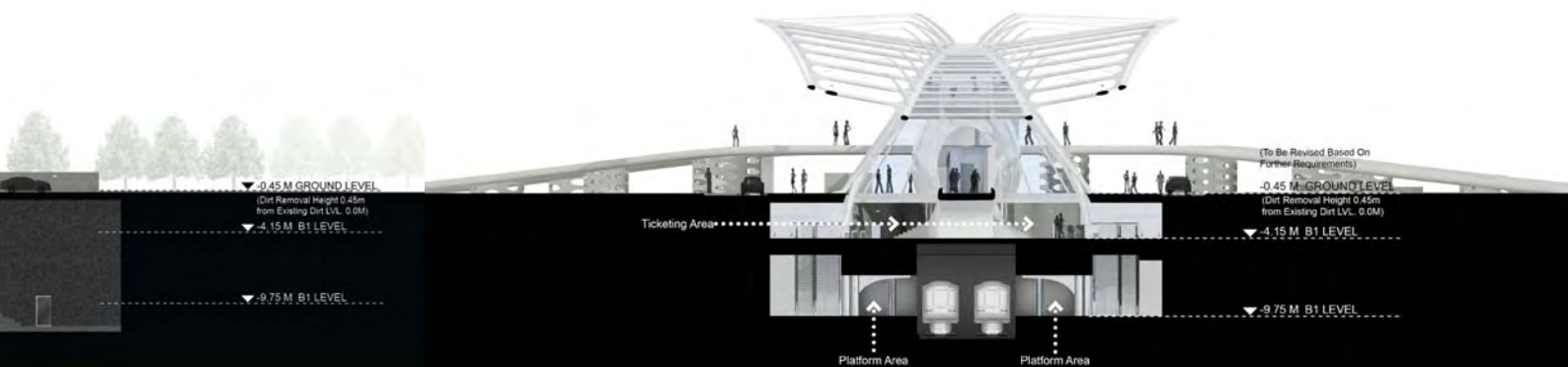
The context at present, in which the station 20 and its park will be located, is underdeveloped with expectation of future development. By concerning it, the most important design aspect was to set a benchmark of the future surroundings near 'station 20'.

Hence, the design was initiated with scheming for a landmark that the city of Sofia would make for the unique identity. The culture and traditional elements are too much there in it already. The modern design with its tradition is way too complicated to make architecture elements for a single station. So that we agreed to follow the context of the site and transform the initiated design elements into organic forms which will be easily mingled into the environment.

By the functions of the station and its landmark role in the city, we created public open spaces to enhance the aesthetic beauty of the station as if it is an art work. The station will be the place where people come and go everyday for their commute. It is to be the park for people to jog, walk, meet, ride, rest, meditate, and play and listen to music. Activities near 'station 20' are in our imagination yet it is to be realized by its openness.







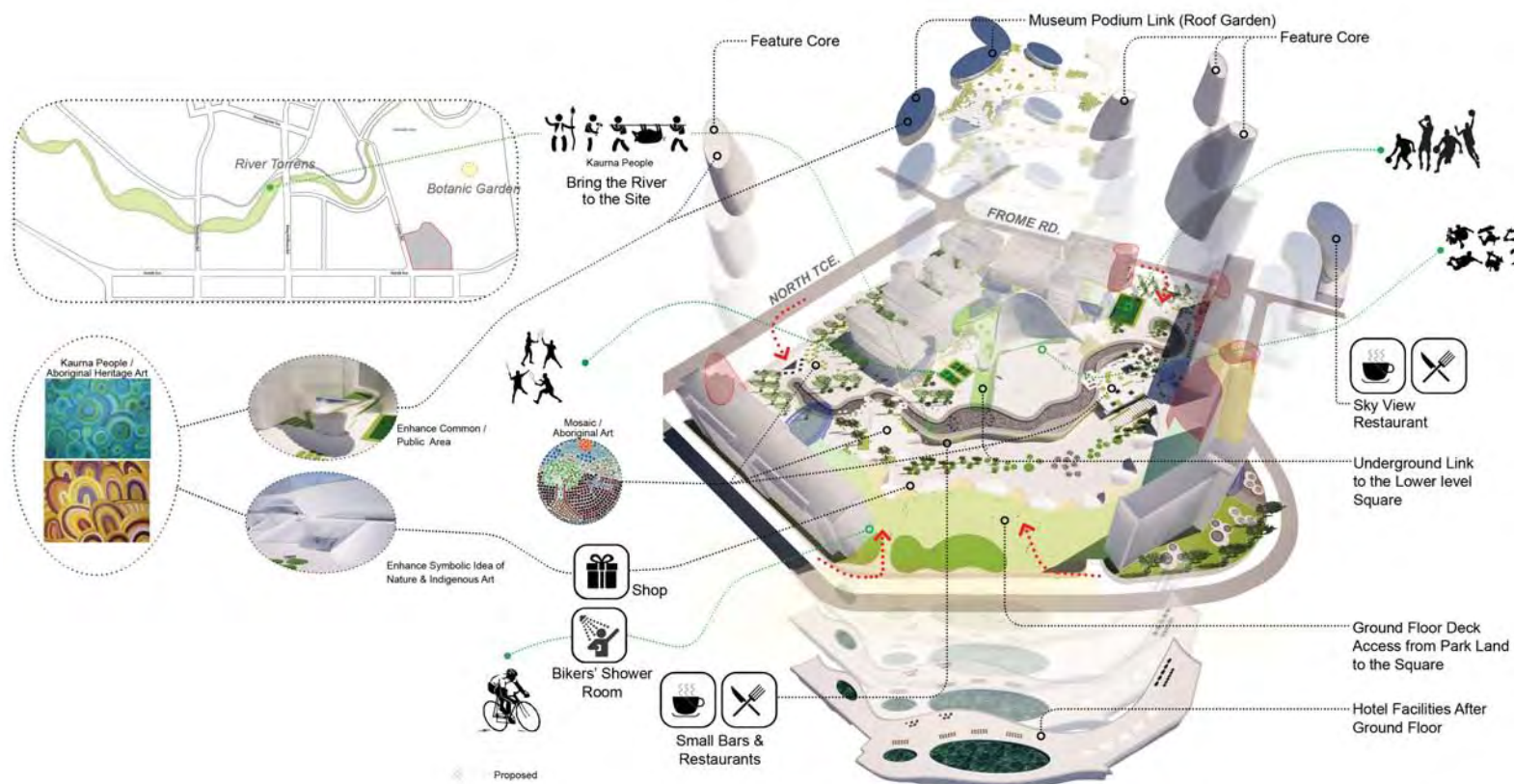




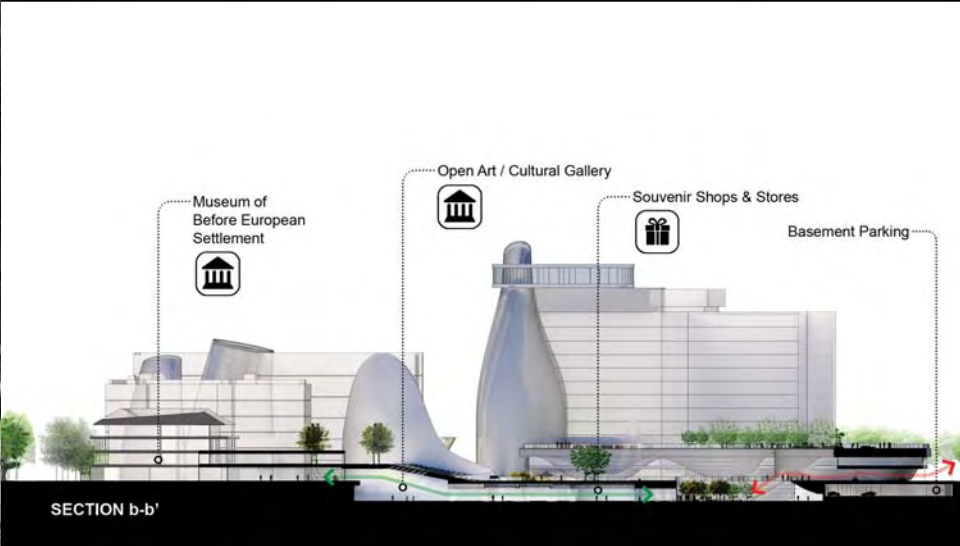
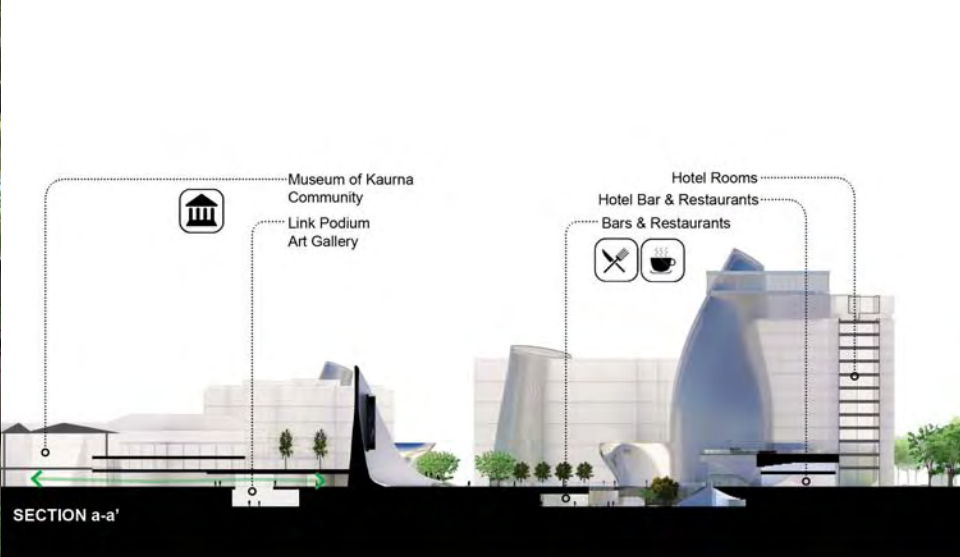
# MIXED USE SHOPPING MALL, MUSEUM & HOTEL

Adelaide, Australia

Adaptive reuse / Preliminary design concept









# TAI-CHUNG SUSTAINABLE TOWER

Taichung, Taiwan

34,850 sqm / 320 m Height / B3 ~ L 36 Level

The abstract idea to represent the spirit of Taiwan was settled into the representation that creates a new image to match and balance with the existing Taipei 101. The characteristics of Taipei 101 were about strong, handsome, majestic, enterprising, powerful etc. as if it is the male tower representing Taiwan. So for the utmost beauty of the nature, the creation of female tower is necessitated to become one unity with Taipei 101 to represent Taiwan's Spirit.

There are key elements that the design of the Tower to erect "Taiwan Tower" as an important landmark in the new special municipality. Taiwan Tower design was planned and designed with the environmental characteristics of traditional building languages as it is well expressed through Taipei 101. Its designs were considered as to representing female characteristics such as graceful, elegant, beautiful, soft, embracing, delicate, wealthy, etc.



Core Structure  
Transfer to Steel C  
at Top Floors

Core + Supercolumn  
Structure  
at Floors Below

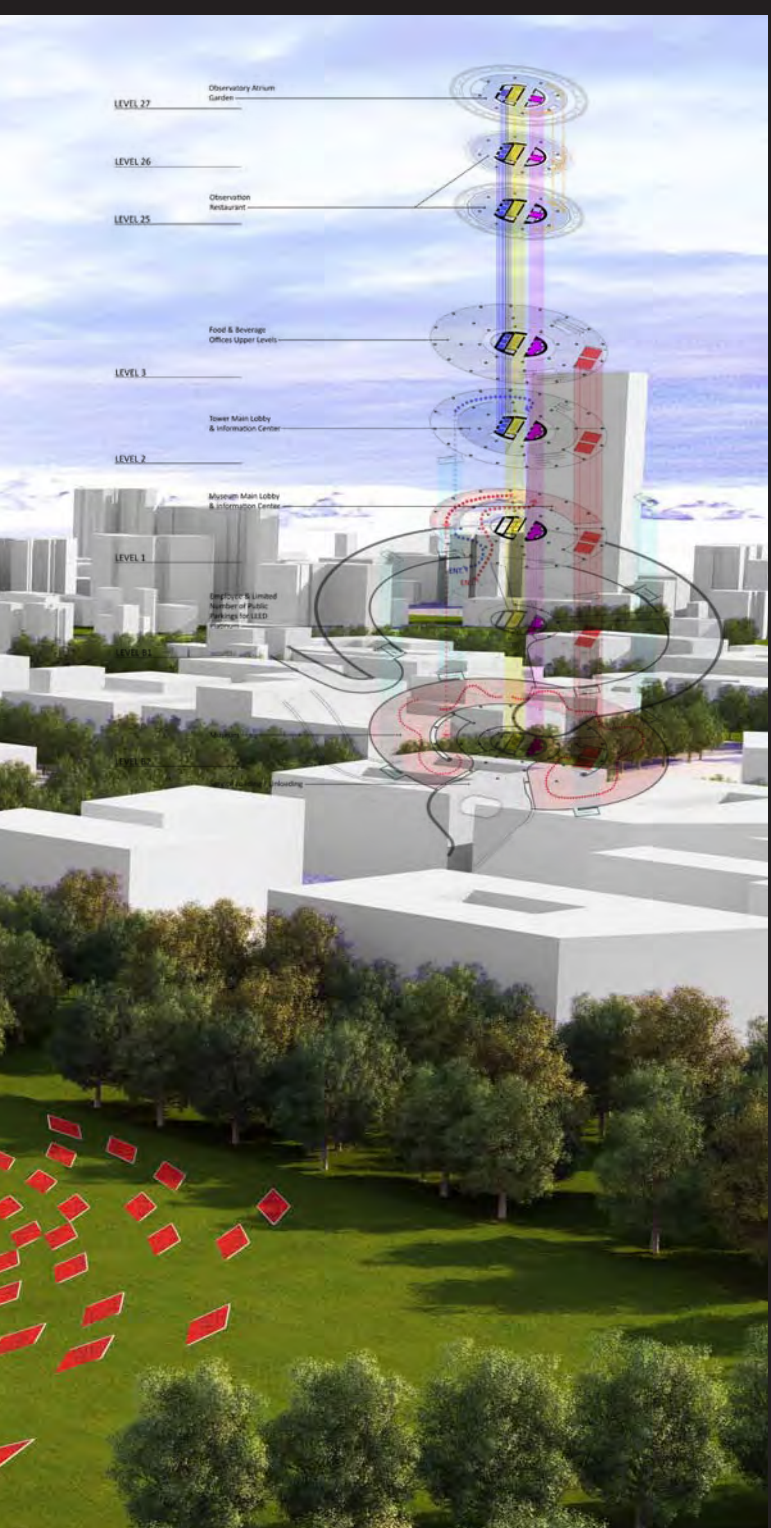
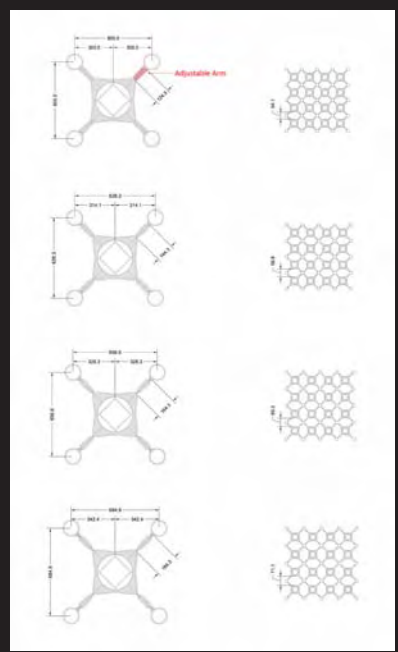
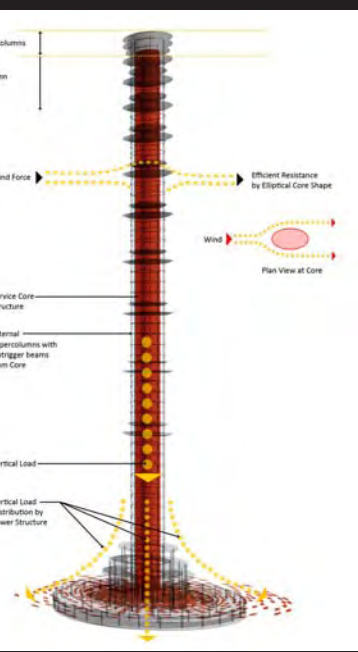
Se  
St

Ex  
Se  
Ou  
at Top Floors

Ve

Ve  
Di  
Lo









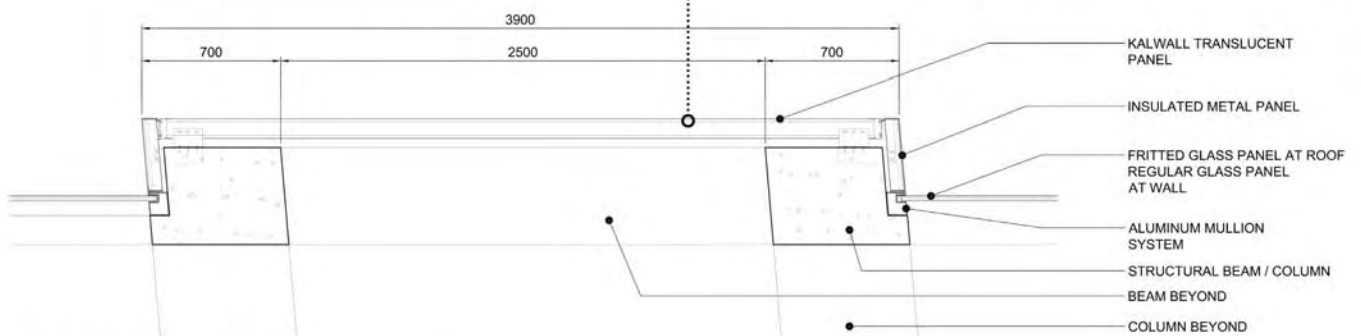
# GO SAN LIBRARY

Gosan, Daegu, South Korea

3,146 sm / 17 m Height / B1 ~ L3 Level

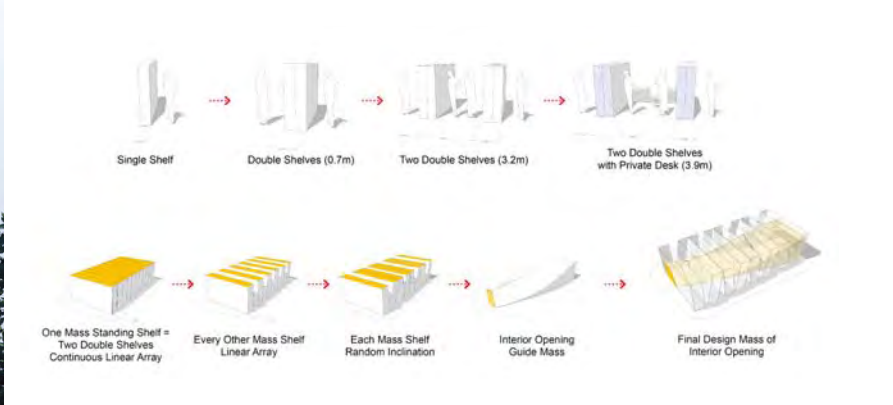


**TRANSLUCENT WALL** - Energy saving in this local community, especially as a public building, is critical in design proposal. Our design proposes the use of Kalwall System. Its easy construction and highly efficient energy saving material are used by reducing artificial light. Also, its low heat transmittance is proven to save energy during winter and summer.



**PARTIAL SECTION DETAIL** - Scale 1/20 (A1)







# NATIONAL MUSEUM OF AFGHANISTAN

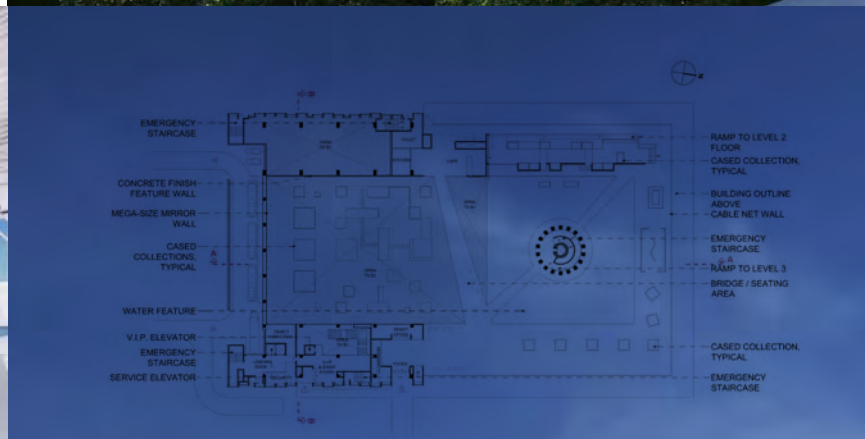
Kabul, Afghanistan

18,000 sm / 18 m Height / B1 ~ L1 Level

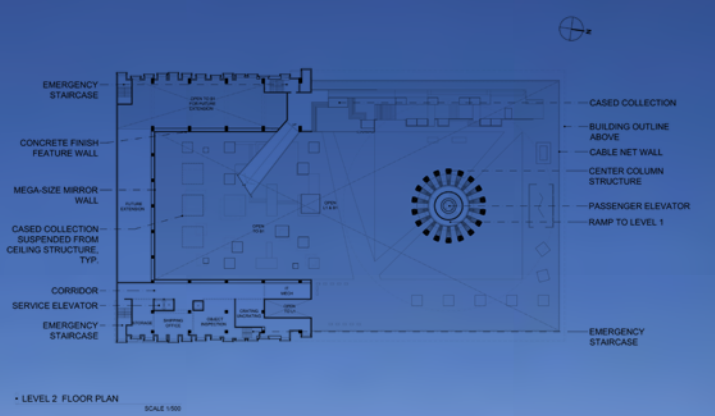
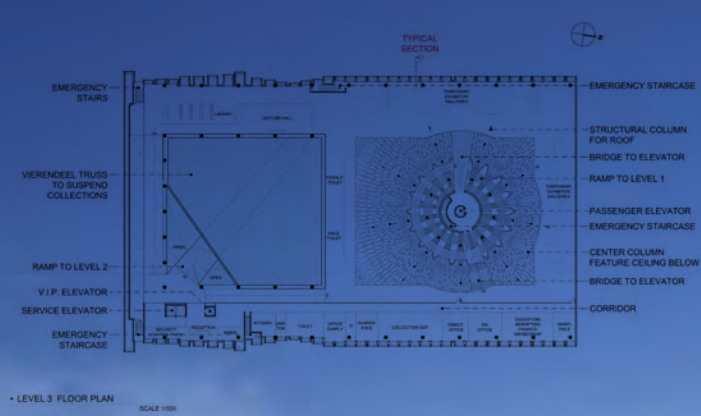
Afghanistan's culture that abides in the country was much ruined and deserted. Its new museum to catch up the lost richness and its cultural asset is necessitated to give hope and inspire people in that region.

Finding this design chance as a way to bring the lost heritage back to the present, the major concern for the architecture was not only about the collections but also emotional realm of space that requires a place to give a rest and the joy of the nature in its heritage safe and secured.

Our Architectural design was initiated to express the culture as if it has been with its heritage for centuries and centuries by emphasizing whose characters are natural environment, richly enormous sculptor, open valley of mountain and bright sun lights that penetrate thru patterned frames of the exterior walls.











# BIOMETRICS EDUCATION CENTER

New Territory, Hong Kong

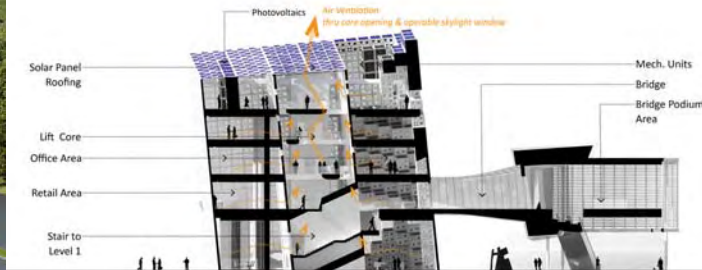
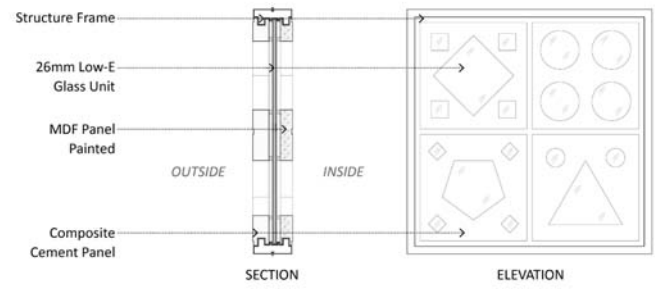
6,823 sm / 31 m Height / L1 ~ L5 Level





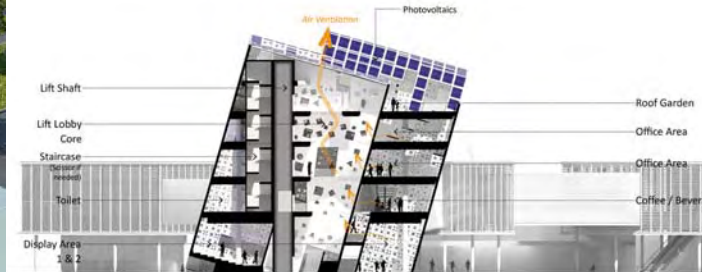


## EXTERIOR WALL UNIT



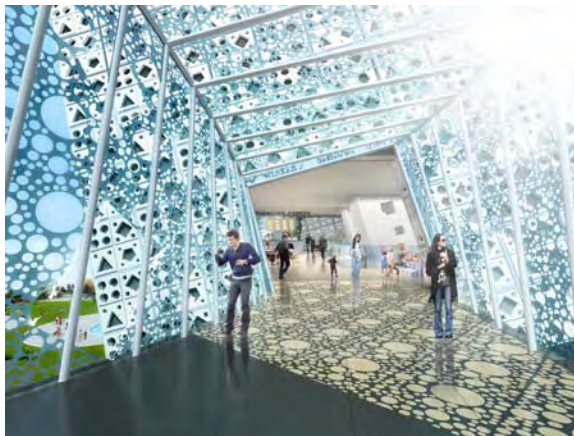
TRANSVERSE SECTION (A - A')

Scale 1 / 300 (A1)

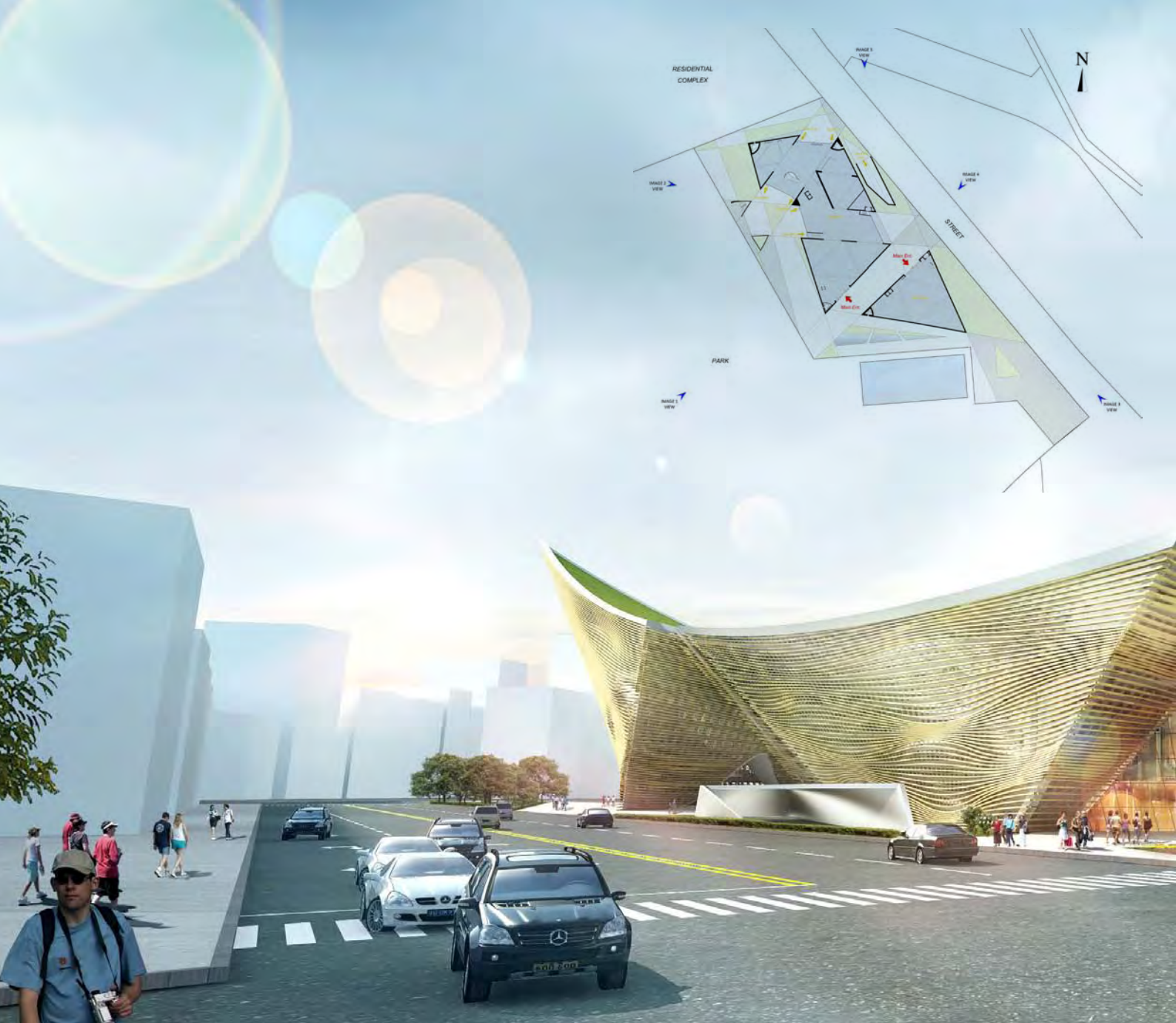


LONGITUDINAL SECTION (B - B')

Scale 1 / 300 (A1)







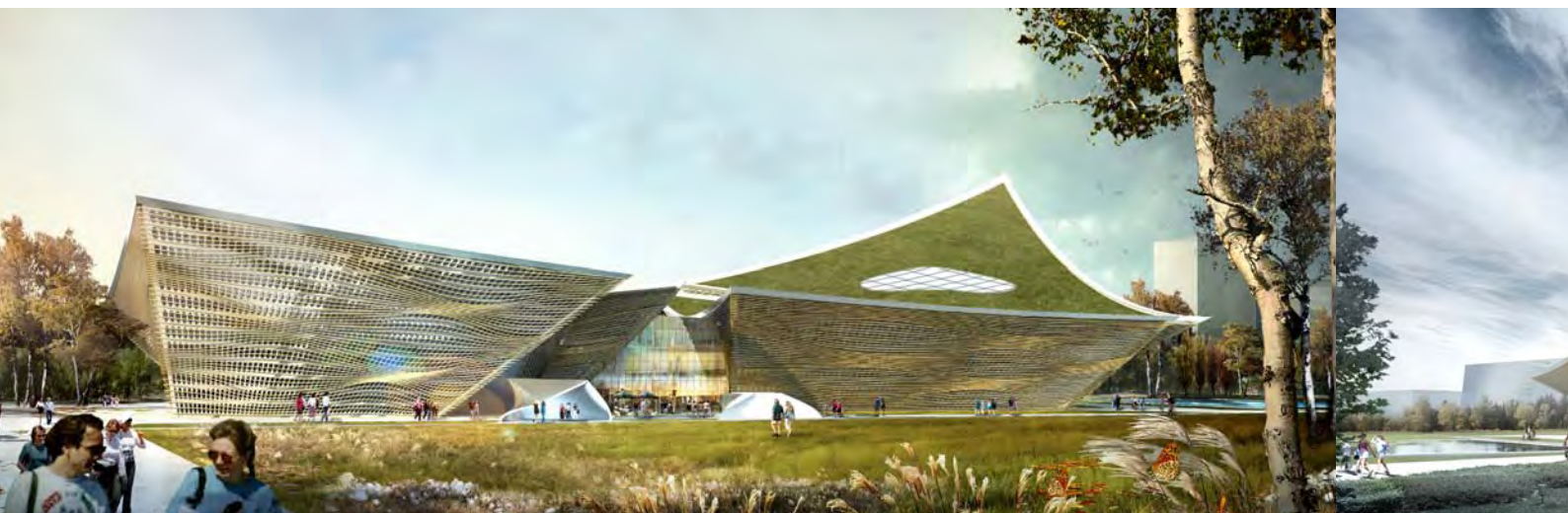
# TAICHUNG CULTURAL CENTER

Taichung, Taiwan

67,000 sm / 45m Height / B2 ~ L5 Level

We believe a change or new is not a sole creation  
what could be the image of modern and conten

In respect of the past architecture, the main id  
ture, prolonged canopies and so on. The overall  
have its beauty of extended and cantilevered c  
much as Taiwanese would easily find and feel c

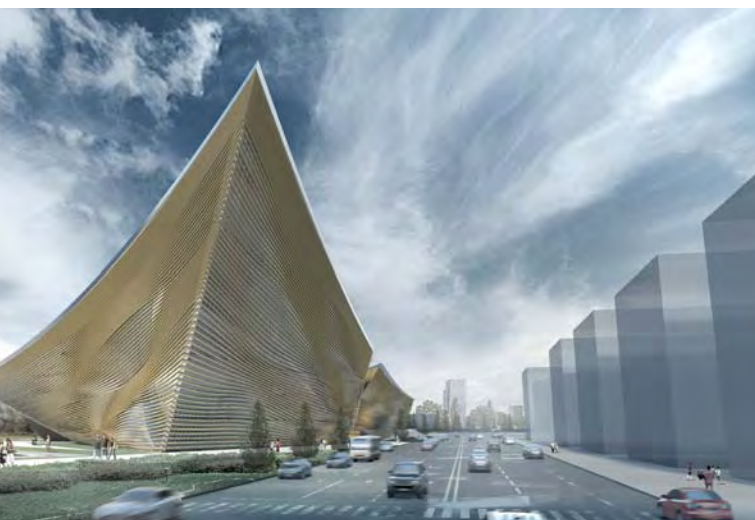






n from nothing but rather evolution from the past. Designing the cultural center was a task to reveal  
emporary Taiwan Architecture. Cultural center is a good place to express the identity of the Taiwan.

ea was driven by its elements in historical buildings which have had its form of curve, wooden struc-  
geometry was created as if it follows the beauty of the nature. So, the ideas of the new cultural center  
anopy with curved roof area. Its style and materials are generated from the traditional elements as  
omfortable with its usual elements in their past.





## OUR KEY PROJECTS

1. Shopping Complex Development, 2013, Adelaide, Australia
2. Biometrics Education Center, 2013, New Territory, Hong Kong
3. Taichung Cultural Center, 2013, Taichung, Taiwan
4. Local PC Church, 2013, Daegu, South Korea
5. Afghanistan Museum, 2012 Kabul, Afghanistan
6. Gosan Library, 2012, Daegu, South Korea
7. Mission International Mixed-Use, 2010, Daegu, South Korea
8. Taiwan Tower, 2011, Taichung, Taiwan
9. Loft Residence, 2010 - Lima, Peru
10. Gadeokdo Island Development, 2010 - Pusan, Korea
11. Multi-purpose Housing Complex, 2006 - Norfolk, VA, USA
12. Fort Bragg War Memorial Station, 2006 - Fort Bragg, NC, USA
13. Public Restroom with Concession Stand, 2005 - Norfolk, VA, USA
14. Student Union Building, 2005 - Blacksburg, VA, USA
15. Sustainable House, 2004 - Roanoke, VA, USA

### Project Collaboration with AEDAS LTD, Hong Kong, China

1. Olympia 66, Shopping Mall : 2010 - Dalian, PRC

### Principal's Project Experience in SOM LLP, NY, USA

1. Hotel Ballagio & Mandarin, 10 2010 - Mumbai, India
2. Mixed Use, Office & Residential Tower, 08 2010 - Riyadh, Saudi Arabia
3. Chatrapati Shivaji International Airport Terminal, 11 2009 - Mumbai, India
4. 1801K st Office Building Exterior Curtain-wall & Interior Renovation, 2007  
- Washington DC, USA
5. Dulles Airport Renovation, 2007, Virginia, USA
5. Virginia Data Center, 2006 , Virginia, USA

Please visit our web site : [www.theeae.com](http://www.theeae.com)

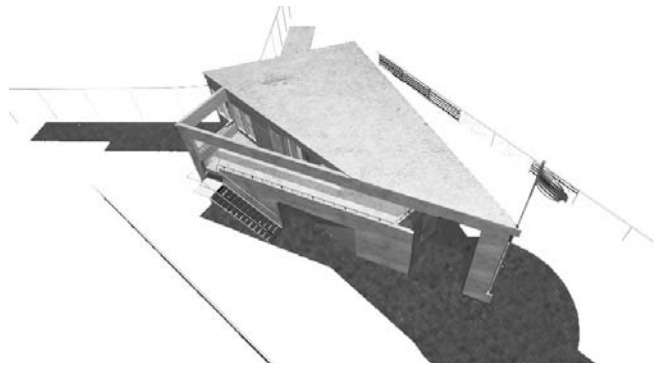
For more projects





# Leading International Architectural Firm





- Public Rest Room, Norfolk, Virginia, USA in 2005 -

Should you have any inquiries regarding our services, please don't hesitate to contact us

Ph: +852. 2976. 4543

Fx: +852. 3006. 5334

info@theeae.com

[www.theeae.com](http://www.theeae.com)