

ARD Triax

for TV-Cameras



DAMAR & HAGEN

	Page
Company Profile.....	1
Product Description	2
Technical Data	3
Design Options.....	4
Products	
Cable Plug.....	5
Panel Cable Plug.....	7
Panel Plug.....	9
Cable Socket.....	13
Panel Cable Socket.....	15
Panel Socket.....	17
Patch Cable.....	20
Accessories & Spare Parts	21
Tool	27
Assembly Instruction	31
Cable Table Triaxial Cable (sorted by Manufacturer).....	45
Cable Table Triaxial Cable (sorted by Cable-Ø).....	46
List of Part Numbers	47

Damar & Hagen Stecksysteme GmbH
Dieselstrasse 11
91301 Forchheim
Germany

Phone
Fax
E-Mail
Internet

+49 (0) 91 91 / 9 75 89-0
+49 (0) 91 91 / 9 75 89-60
info@damar-hagen.de
www.damar-hagen.de

Business hours: Monday to Thursday
Friday

7.30 a.m. to 12.00 p.m. and 12.30 p.m. and 16.30 p.m.
7.30 a.m. to 12.00 p.m.



Damar & Hagen

over 90 years of quality – made in Germany



Damar & Hagen was founded in 1922 by Georg Damar und Georg Hagen.

As the company had clear vision and a specific direction right from the start, we can rely on a wealth of experience, quality production and know how. Damar & Hagen is also certified according to DIN EN ISO 9001:2008.

Owing to continued market orientation, a targeted expansion of the product range, as well as ongoing investment in state-of-the-art tools and machines together with the use of a broad range of test and measuring methods, Damar & Hagen are able to present a comprehensive range of products used by satisfied customers the world over.

Our high-quality plug connectors and other products are often the result of close collaboration with our customers. Regardless of how individual the applications of our customers are – with our expertise and experience spanning decades, we pursue just one goal: **To provide a customer-specific solution with an excellent price/performance ratio!**

We shall keep this innovative direction in the future. Quality, individuality and flexibility are applied goals our company strives after for our business partners.

The desire for quality is what connects us.



Damar & Hagen Triax Connectors are characterised by high optional reliability and ease of assembly.

The product range includes Triax plug-and-socket connections for the connection of color television camera cables in television studios, transmission vans and outdoor operation.

The connector range with keyed bayonet locking has been VDE-tested and satisfies the demands set by DIN 40050, VDE 0110, 0470 und VDE 0627.

This series includes cable plugs and cable sockets with cable entry fittings for various cable dimensions and installation assemblies with various methods of connection.

All Triax connectors with cable entry (housing) have a radial cable clamping, therefore high tensile loading of the cable can be intercepted.

Additional rectangular flanges on the cable assemblies permit the installation of preassembled Triax cables in patch-boards. Protective Sleeves can be delivered for all straight cable assemblies.

Waterproof protective caps are available for all models as additional accessories.



VDE-tested in acc. with DIN 40050, VDE 0110, VDE 0470 and VDE 0627

Electrical Characteristics (at 20 °C and 65 % relative humidity)

Surge Impedance.....	75 Ω
Frequency Range.....	up to 800 MHz
Reflection factor (Plug-Socket inserted)	≤ 0.07
Contact resistance.....	Inner conductor ≤ 3 mΩ Inner shield ≤ 3 mΩ Outer shield ≤ 15 mΩ
Insulation resistance.....	≥ 10 ⁴ MΩ at (100 ± 15) V-
Test voltage	
between inner conductor and inner shield	≤ 1.5 to 2.7 kV eff. 50 Hz
between inner and outer shield.....	≥ 1 kV eff. 50 Hz
Operating voltage	≤ 700 V _{ss}
Operating current	≤ 1.5 A

Mechanical Details

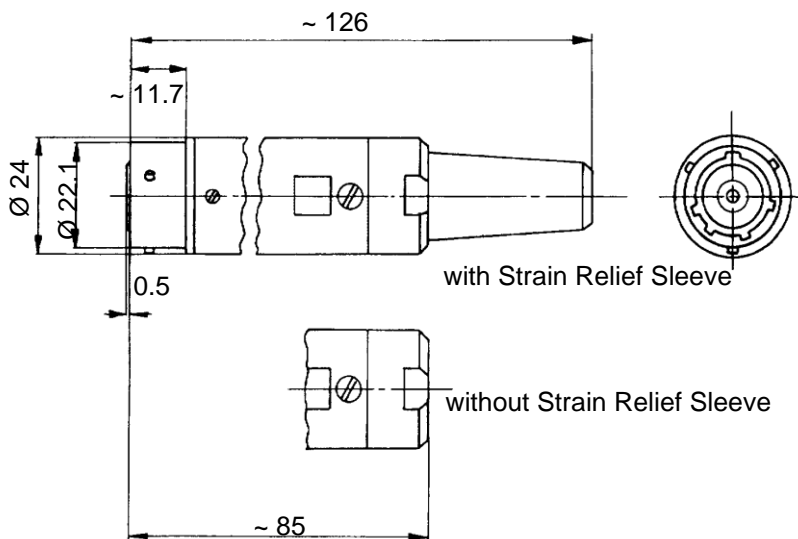
Contact assignment.....	1 inner conductor, 2 concentric protective shields Contact to the outer protective shield is made first at insertion.
Contact system.....	Pin-socket principle
Cable connection.....	Crimp-/ Solder-Technology
Cable entry	max. 14 mm Ø
Tension load on the cable clamp	400 N max. – depends on the breaking strength of the cable used
Coupling type	Bayonet connection
Total insertion force.....	≤ 50 N
Total extraction force	≤ 40 N
Mechanical endurance	≤ 1.500 reliable connections
Impermeable to presswater	in connected state, safety class IP67 in acc. with DIN 40050 (to 10 N/cm ²)

Operating Temperature Range

Plug-and-Socket connections without Strain Relief Sleeve	- 60 °C to +150 °C
Plug-and-Socket connection with Strain Relief Sleeve (polyurethane)...	- 60 °C to +100 °C

The specified data serve only to describe the product and should not be considered legally binding, guaranteed properties. Depending on the application, design, type of cable and assembly method the specified values may differ. We reserve the right to make constructional changes, determine delivery and are not responsible for any errors and omissions.

Surface.....	special surfaces according to customers requirement for the layer structure and also for the layer thicknesses
Cable Connections	halogen-free cables multi-wire cable unusual cable diameter from 5 up to 14 mm Assembly by our company, also possible for special cables
Dimensions	all dimensions, distances, nuts, thread length mounting holes, bases etc. are variable according to customers requirement
Electrically variable.....	special resistors, circuits, contacts, micro-switches possible. According to customers requirement (e.g. test voltage etc.).
Insulating parts, Gaskets and Contacts	other colors, other material possible (e.g. Beryllium bronze for outer conductor contact)



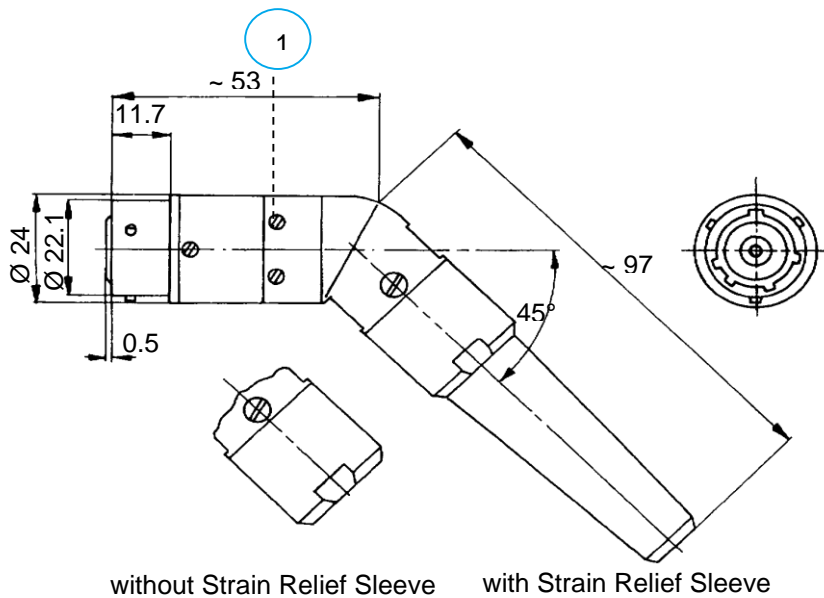
Crimp connection, with additional clamping of the cable sheath

Accessories (extra order): Protective Cap for contact protection Part-No. 2-1779-7463
 Protective Sleeve (in accordance with Cable Group*) for fittings protection

Cables and cable assemblies available on customer request.

Cable nominal-Ø	Cable Group*	Reference Cable*	Part Number without Strain Relief Sleeve	Part Number with Strain Relief Sleeve	Assembly Instruction
5	I	0.55L/2.3 <i>Leoni/Perivox</i>	1-4775-4700	1-4777-4700	114
8	A	1.0s/4.5s <i>Draka</i> ; 7783A <i>Belden</i>	1-3973-4700	1-3978-4700	102
9	B	8/1 DMC 1.0Ls/4.5s <i>Draka</i>	1-3972-4700	1-3977-4700	
11	D	1.4s/6.5s <i>Draka</i> ; 7784AF <i>Belden</i>	1-3975-4700	1-3980-4700	
12	E	11/1 PUR 1.4/6.5s <i>Draka</i>	1-3974-4700	1-3979-4700	
	N	1.75s/7.5s <i>Draka</i>	1-8490-4700	1-8491-4700	
14	F	2.2Ls/9.7s <i>Draka</i> ; 7785A <i>Belden</i>	1-3976-4700	1-3981-4700	

*see Cable Table Triaxial Cables



1 Cable outlet can be adjusted radially in 30° steps in all directions

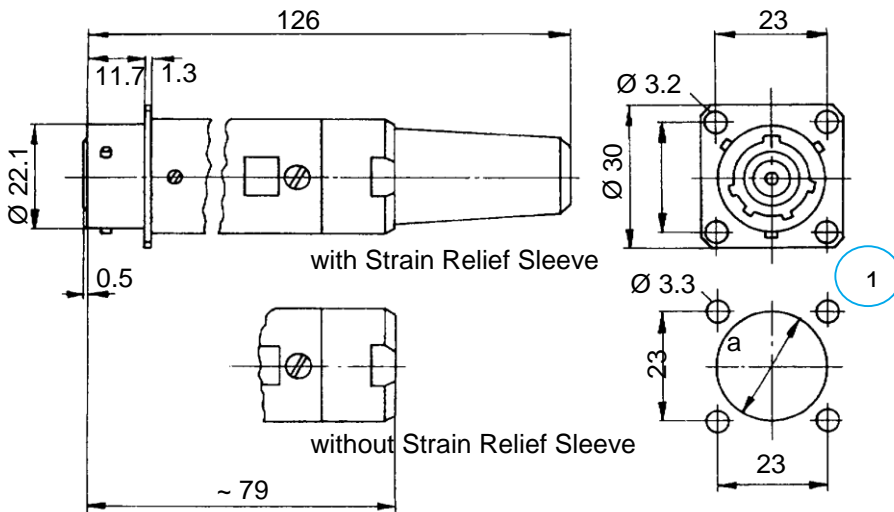
Crimp connection, with additional clamping of the cable sheath

Accessories (extra order): Protective Cap for contact protection Part-No. 2-1779-7463

Cables and cable assemblies available on customer request.

Cable nominal-Ø	Cable Group*	Reference Cable*	Part Number without Strain Relief Sleeve	Part Number with Strain Relief Sleeve	Assembly Instruction
5	I	0.55L/2.3 <i>Leoni/Perivox</i>	1-4779-4701	1-4781-4701	117
8	A	1.0s/4.5s <i>Draka</i> ; 7783A <i>Belden</i>	1-4293-4701	1-4297-4701	111
9	B	8/1 DMC 1.0Ls/4.5s <i>Draka</i>	1-4292-4701	1-4296-4701	
11	D	1.4s/6.5s <i>Draka</i> ; 7784AF <i>Belden</i>	1-4295-4701	1-4299-4701	
12	E	11/1 PUR 1.4/6.5s <i>Draka</i>	1-4294-4701	1-4298-4701	

*see Cable Table Triaxial Cable



Mounting holes

Mounting panel $\leq 8\text{mm}$

Dimension ,a'= 26.0 for Cable- $\varnothing \leq 13$

Dimension ,a'= 29.5 for Cable- $\varnothing \geq 14$

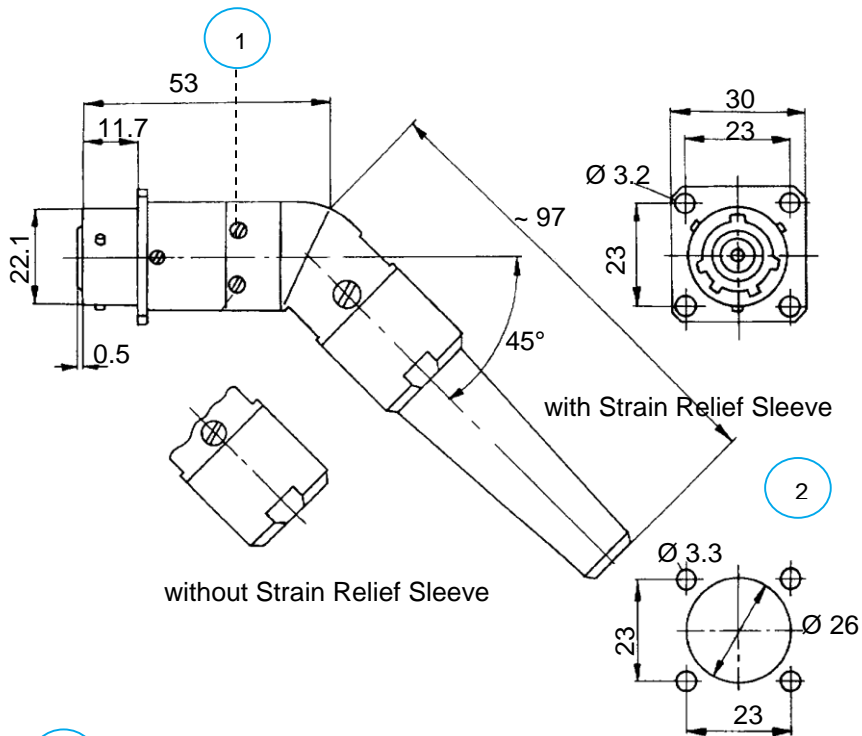
Crimp Connection, with additional clamping of the cable sheath

Accessories (extra order): Protective Cap for contact protection Part-No. 2-1779-7463

Cables and cable assemblies available on customer request.

Cable nominal- \varnothing	Cable Group*	Reference Cable*	Part Number without Strain Relief Sleeve	Part Number with Strain Relief Sleeve	Assembly Instruction
5	I	0.55L/2.3 Leoni/Perivox	1-4783-4702	1-4785-4702	114
8	A	1.0s/4.5s Draka; 7783A Belden	1-3983-4702	1-3988-4702	102
9	B	8/1 DMC 1.0Ls/4.5s Draka	1-3982-4702	1-3987-4702	
11	D	1.4s/6.5s Draka; 7784AF Belden	1-3985-4702	1-3990-4702	
12	E	11/1 PUR 1.4/6.5s Draka	1-3984-4702	1-3989-4702	
	N	1.75s/7.5s Draka	1-8494-4702	1-8495-4702	
14	F	2.2Ls/9.7s Draka; 7785A Belden	1-3986-4702	1-3991-4702	

*see Cable Table Triaxial Cable



- 1 Cable outlet can be adjusted radially in 30° steps in all directions
- 2 Mounting holes
Mounting panel ≤ 8mm

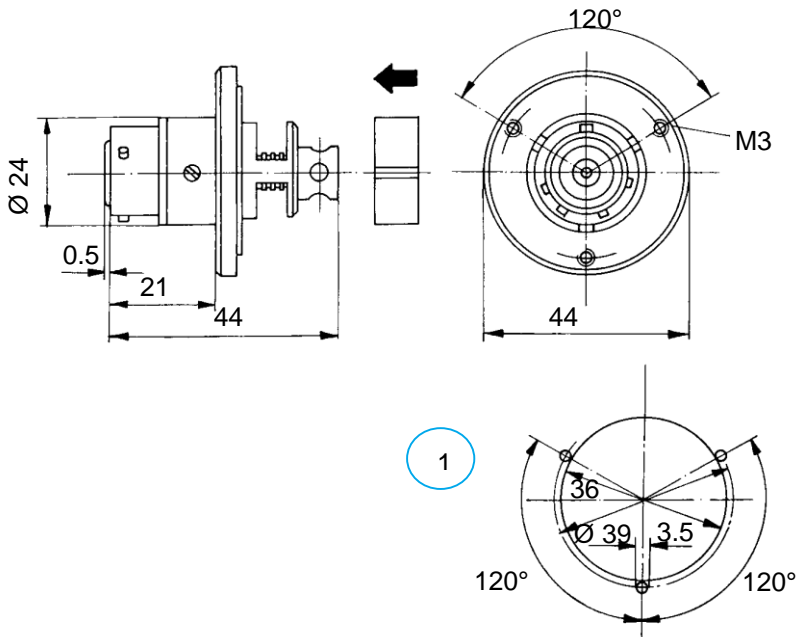
Crimp Connection, with additional clamping of the cable sheath

Accessories (extra order): Protective Cap for contact protection Part-No. 2-1779-7463

Cables and cable assemblies available on customer request.

Cable nominal-Ø	Cable Group*	Reference Cable*	Part Number without Strain Relief Sleeve	Part Number with Strain Relief Sleeve	Assembly Instruction
5	I	0.55L/2.3 <i>Leoni/Perivox</i>	1-4787-4703	1-4789-4703	117
8	A	1.0s/4.5s <i>Draka</i> ; 7783A <i>Belden</i>	1-4301-4703	1-4305-4703	111
9	B	8/1 DMC 1.0Ls/4.5s <i>Draka</i>	1-4300-4703	1-4304-4703	
11	D	1.4s/6.5s <i>Draka</i> ; 7784AF <i>Belden</i>	1-4303-4703	1-4307-4703	
12	E	11/1 PUR 1.4/6.5s <i>Draka</i>	1-4302-4703	1-4306-4703	

*see Cable Table Triaxial Cable



1 Mounting holes
Mounting panel ≤ 5 mm

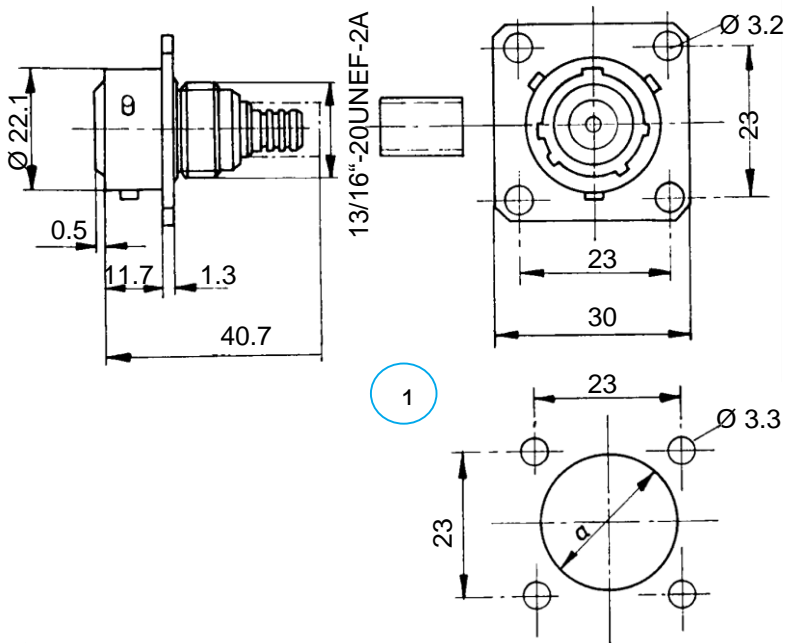
Soldered Connection

Accessories (extra order): Protective Cap for contact protection Part-No. 2-1779-7463

Cables and cable assemblies available on customer request.

Cable-nominal-Ø	Cable Group*	Reference Cable*	Part Number	Assembly Instruction
8	A	1.0s/4.5s <i>Draka</i> ; 7783A <i>Belden</i>	1-2611-4704	106
9	B	8/1 DMC 1.0Ls/4.5s <i>Draka</i>		
11	D	1.4s/6.5s <i>Draka</i> ; 7784AF <i>Belden</i>	1-2608-4704	
12	E	11/1 PUR 1.4/6.5s <i>Draka</i>		
14	F	2.2Ls/9.7s <i>Draka</i> ; 7785A <i>Belden</i>	1-2609-4704	

*see Cable Table Triaxial Cable



- 1 Mounting holes
 Mounting panel $\leq 8\text{mm}$
 Dimension ,a' = 26.0 for cable- $\varnothing \leq 13$
 Dimension ,a' = 29.5 for cable- $\varnothing \geq 14$

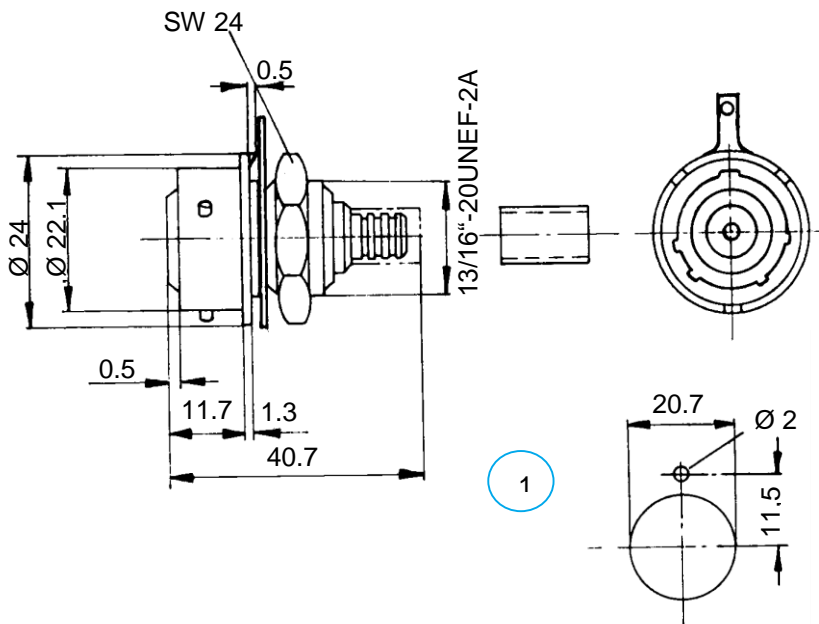
Crimp connection or soldered connection

Accessories (extra order): Protective Cap for contact protection Part-No. 2-1779-7463

Cables and cable assemblies available on customer request.

Cable nominal- \varnothing	Cable Group*	Reference Cable*	Part Number	Assembly Instruction
5	I	0.55L/2.3 <i>Leoni/Perivox</i>	1-4793-4704	116
8	A	1.0s/4.5s <i>Draka</i> ; 7783A <i>Belden</i>	1-2582-4704	105
9	B	8/1 DMC 1.0Ls/4.5s <i>Draka</i>		
11	D	1.4s/6.5s <i>Draka</i> ; 7784AF <i>Belden</i>	1-2530-4704	
12	E	11/1 PUR 1.4/6.5s <i>Draka</i>	1-8496-4704	
	N	1.75s/7.5s <i>Draka</i>		
14	F	2.2Ls/9.7s <i>Draka</i> ; 7785A <i>Belden</i>	1-2531-4704	

*see Cable Table Triaxial Cable



1 Mounting hole
Mounting panel ≤ 3.5 mm

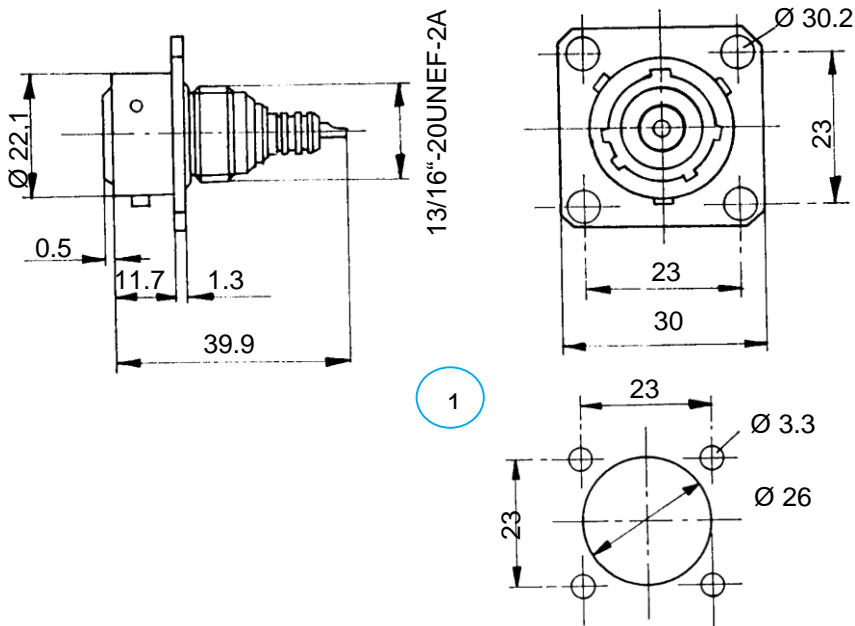
Crimp connection or soldered connection

Accessories (extra order): Protective Cap for contact protection Part-No. 2-1779-7463

Cables and cable assemblies available on customer request.

Cable nominal-Ø	Cable Group*	Reference Cable*	Part Number	Assembly Instruction
5	I	0.55L/2.3 Leoni/Perivox	1-4791-4704	116
8	A	1.0s/4.5s Draka; 7783A Belden	1-2581-4704	105
9	B	8/1 DMC 1.0Ls/4.5s Draka		
11	D	1.4s/6.5s Draka; 7784AF Belden	1-2527-4704	
12	E	11/1 PUR 1.4/6.5s Draka	1-8497-4704	
	N	1.75s/7.5s Draka		
14	F	2.2Ls/9.7s Draka; 7785A Belden	1-2528-4704	

*see Cable Table Triaxial Cable

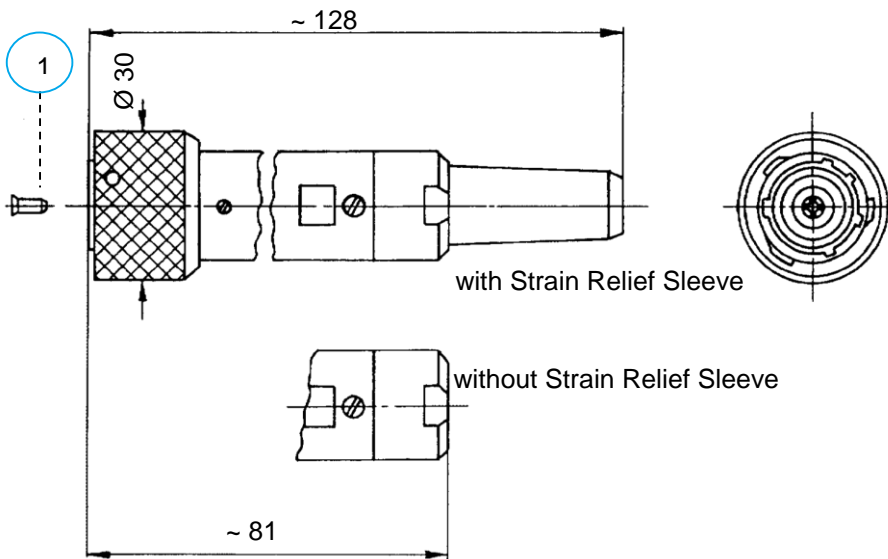


1 Mounting hole
Mounting panel ≤ 8 mm

Soldered Connection

Accessories (extra order): Protective Cap for contact protection Part-No. 2-1779-7463

Part Number
1-2572-4704



- 1 Guide bush:
Impress using mandrel after the assembly has been completed correctly.

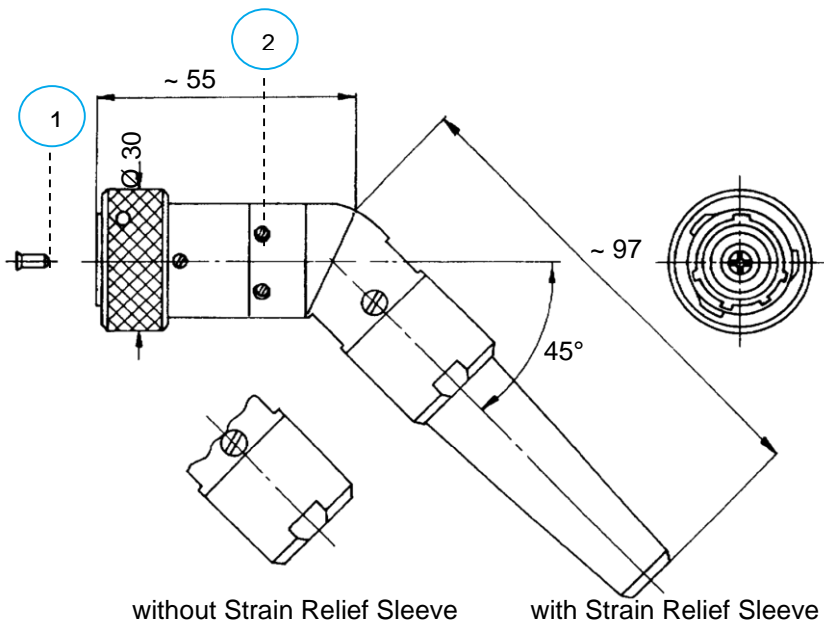
Crimp connection, with additional clamping of the cable sheath

Accessories (extra order): Protective Cap for contact protection Part-No. 2-1780-7463
Protective Sleeve (in accordance with Cable Group) for fittings protection

Cables and cable assemblies available on customer request.

Cable nominal-Ø	Cable Group*	Reference Cable*	Part Number without Strain Relief Sleeve	Part Number with Strain Relief Sleeve	Assembly Instruction
5	I	0.55L/2.3 <i>Leoni/Perivox</i>	1-4795-4740	1-4797-4740	114
8	A	1.0s/4.5s <i>Draka</i> ; 7783A <i>Belden</i>	1-3993-4740	1-3998-4740	102
9	B	8/1 DMC 1.0Ls/4.5s <i>Draka</i>	1-3992-4740	1-3997-4740	
11	D	1.4s/6.5s <i>Draka</i> ; 7784AF <i>Belden</i>	1-3995-4740	1-4000-4740	
12	E	11/1 PUR 1.4/6.5s <i>Draka</i>	1-3994-4740	1-3999-4740	
	N	1.75s/7.5s <i>Draka</i>	1-8492-4740	1-8493-4740	
14	F	2.2Ls/9.7s <i>Draka</i> ; 7785A <i>Belden</i>	1-3996-4740	1-4001-4740	

*see Cable Table Triaxial Cable



- 1 Guide bush:
Impress using mandrel after the assembly has been completed correctly.
- 2 Cable outlet can be adjusted radially in 30° steps in all directions

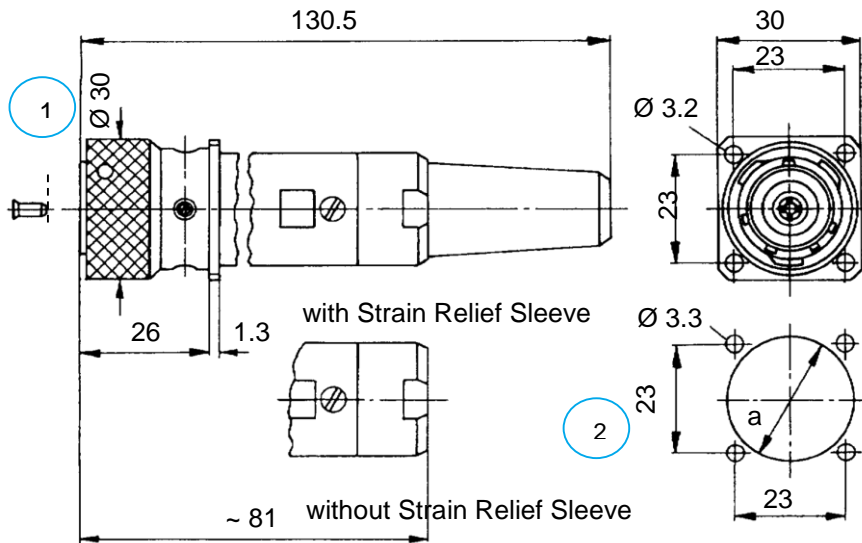
Crimp connection, with additional clamping of the cable sheath

Accessories (extra order): Protective Cap for contact protection Part-No. 2-1780-7463

Cables and cable assemblies available on customer request.

Cable nominal-Ø	Cable Group*	Reference Cable*	Part Number without Strain Relief Sleeve	Part Number with Strain Relief Sleeve	Assembly Instruction
5	I	0.55L/2.3 <i>Leoni/Perivox</i>	1-4801-4741	1-4803-4741	117
8	A	1.0s/4.5s <i>Draka</i> ; 7783A <i>Belden</i>	1-4016-4741	1-4020-4741	111
9	B	8/1 DMC 1.0Ls/4.5s <i>Draka</i>	1-4015-4741	1-4019-4741	
11	D	1.4s/6.5s <i>Draka</i> ; 7784AF <i>Belden</i>	1-4018-4741	1-4022-4741	
12	E	11/1 PUR 1.4/6.5s <i>Draka</i>	1-4017-4741	1-4021-4741	

*see Cable Table Triaxial Cable



- 1 Guide bush:
Impress using mandrel after the assembly has been completed correctly.
- 2 Mounting holes
Mounting panel $\leq 8\text{mm}$
Dimension ,a' = 26.0 for cable- $\varnothing \leq 13$
Dimension ,a' = 29.5 for cable- $\varnothing \geq 14$

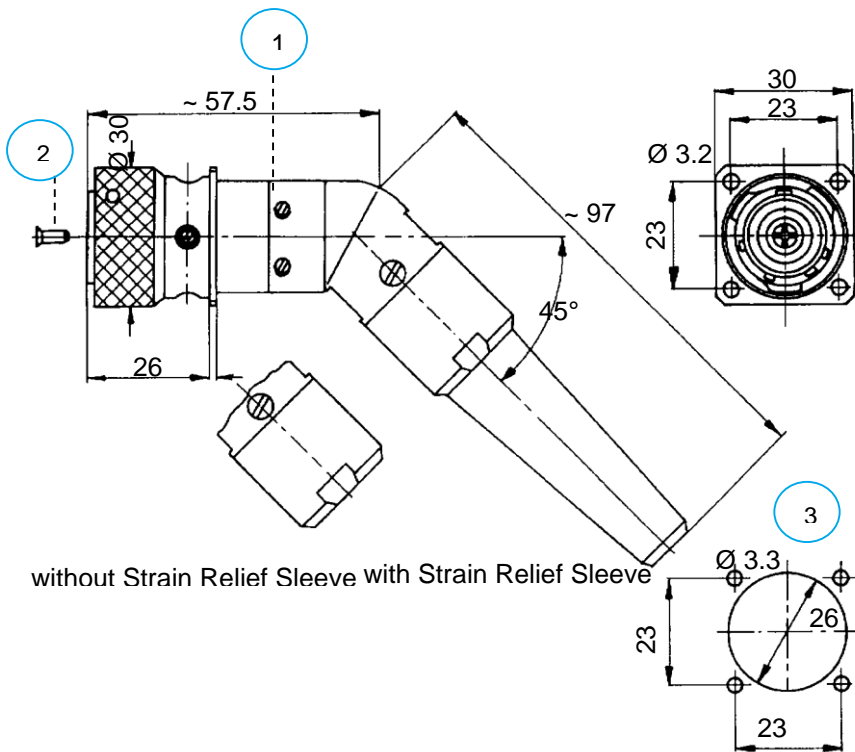
Crimp connection, with additional clamping of the cable sheath

Accessories (extra order): Protective Cap for contact protection Part-No. 2-1780-7463

Cables and cable assemblies available on customer request.

Cable nominal- \varnothing	Cable Group*	Reference Cable*	Part Number without Strain Relief Sleeve	Part Number with Strain Relief Sleeve	Assembly Instruction
5	I	0.55L/2.3 <i>Leoni/Perivox</i>	1-4809-4742	1-4811-4742	115
8	A	1.0s/4.5s <i>Draka</i> ; 7783A <i>Belden</i>	1-4003-4742	1-4008-4742	104
9	B	8/1 DMC 1.0Ls/4.5s <i>Draka</i>	1-4002-4742	1-4007-4742	
11	D	1.4s/6.5s <i>Draka</i> ; 7784AF <i>Belden</i>	1-4005-4742	1-4010-4742	
12	E	11/1 PUR 1.4/6.5s <i>Draka</i>	1-4004-4742	1-4009-4742	
	N	1.75s/7.5s <i>Draka</i>	1-8498-4742	1-8499-4742	
14	F	2.2Ls/9.7s <i>Draka</i> ; 7785A <i>Belden</i>	1-4006-4742	1-4011-4742	

*see Cable Table Triaxial Cable



without Strain Relief Sleeve with Strain Relief Sleeve

- 1 Cable outlet can be adjusted radially in 30° steps in all directions
- 2 Guide bush:
Impress using mandrel *after* the assembly has been completed correctly.
- 3 Mounting hole
Mounting Panel ≤ 8 mm

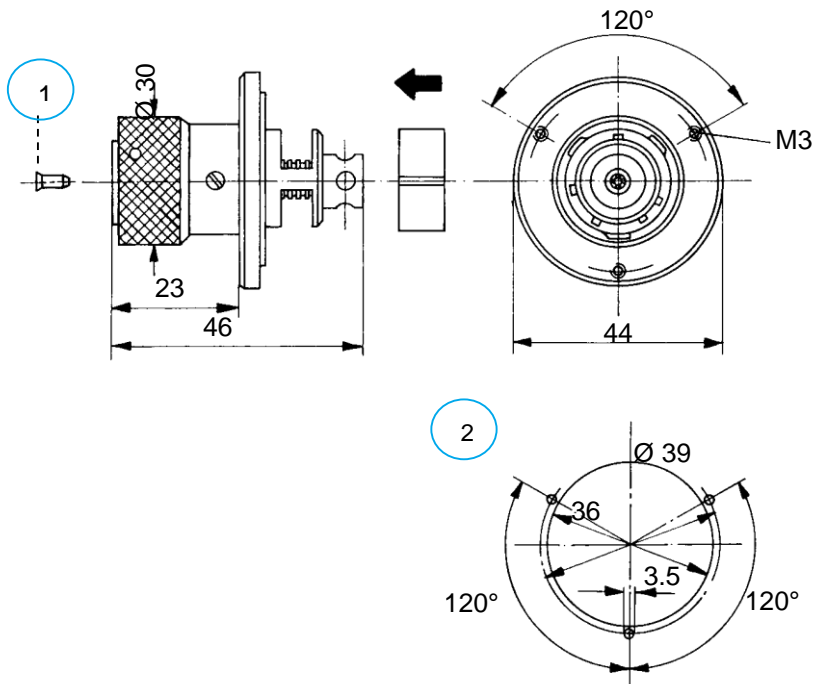
Crimp connection, with additional clamping of the cable sheath

Accessories (extra order): Protective Cap for contact protection Part-No. 2-1780-7463

Cables and cable assemblies available on customer request.

Cable nominal-Ø	Cable Group*	Reference Cable*	Part Number without Strain Relief Sleeve	Part Number with Strain Relief Sleeve	Assembly Instruction
5	I	0.55L/2.3 <i>Leoni/Perivox</i>	1-4813-4743	1-4815-4743	118
8	A	1.0s/4.5s <i>Draka</i> ; 7783A <i>Belden</i>	1-4309-4743	1-4313-4743	112
9	B	8/1 DMC 1.0Ls/4.5s <i>Draka</i>	1-4308-4743	1-4312-4743	
11	D	1.4s/6.5s <i>Draka</i> ; 7784AF <i>Belden</i>	1-4311-4743	1-4315-4743	
12	E	11/1 PUR 1.4/6.5s <i>Draka</i>	1-4310-4743	1-4314-4743	

*see Cable Table Triaxial Cable



- 1 Guide bush:
Impress using mandrel after the assembly has been completed correctly.
- 2 Mounting hole
Mounting panel ≤ 5 mm

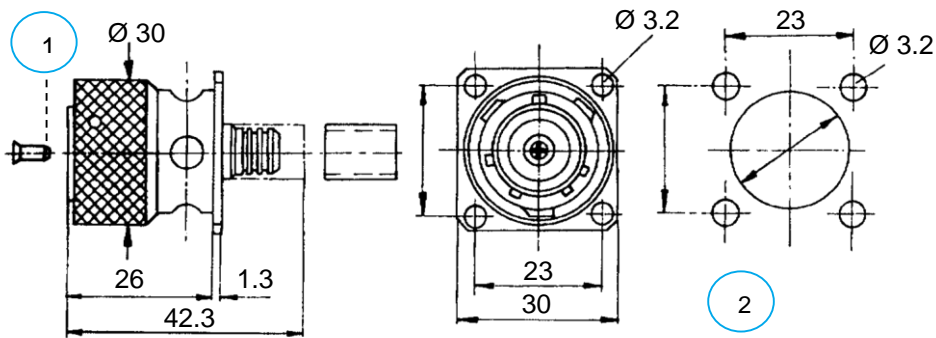
Soldered connection

Accessories (extra order): Protective Cap for contact protection Part-No. 2-1780-7463

Cables and cable assemblies available on customer request.

Cable nominal-Ø	Cable Group*	Reference Cable*	Part Number	Assembly Instruction
8	A	1.0s/4.5s <i>Draka</i> ; 7783A <i>Belden</i>	1-2615-4744	106
9	B	8/1 DMC 1.0Ls/4.5s <i>Draka</i>		
11	D	1.4s/6.5s <i>Draka</i> ; 7784AF <i>Belden</i>	1-2612-4744	
12	E	11/1 PUR 1.4/6.5s <i>Draka</i>		
14	F	2.2Ls/9.7s <i>Draka</i> ; 7785A <i>Belden</i>	1-2613-4744	

*see Cable Table Triaxial Cable



- 1 Guide bush:
Impress using mandrel after the assembly has been completed correctly.
- 2 Mounting hole
Mounting panel ≤ 3.5 mm
Dimension ,a' = 26.0 for cable- $\varnothing \leq 13$
Dimension ,a' = 29.5 for cable- $\varnothing \geq 14$

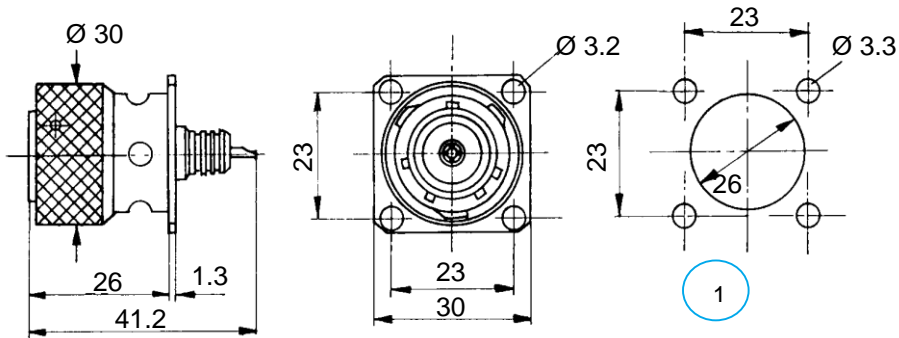
Crimp connection or soldered connection

Accessories (extra order): Protective Cap for contact protection Part-No. 2-1780-7463

Cables and cable assemblies available on customer request.

Cable nominal- \varnothing	Cable Group*	Reference Cable*	Part Number	Assembly Instruction
5	I	0.55L/2.3 Leoni/Perivox	1-4817-4744	116
8	A	1.0s/4.5s Draka; 7783A Belden	1-2587-4744	105
9	B	8/1 DMC 1.0Ls/4.5s Draka		
11	D	1.4s/6.5s Draka; 7784AF Belden	1-2550-4744	
12	E	11/1 PUR 1.4/6.5s Draka	1-8500-4744	
	N	1.75s/7.5s Draka		
14	F	2.2Ls/9.7s Draka; 7785A Belden	1-2551-4744	

*see Cable Table Triaxial Cable



1 Mounting hole
Mounting panel ≤ 8 mm

Soldered connection

Accessories (extra order): Protective Cap for contact protection Part-No. 2-1780-7463

Part Number

1-2573-4744

DAMAR & HAGEN

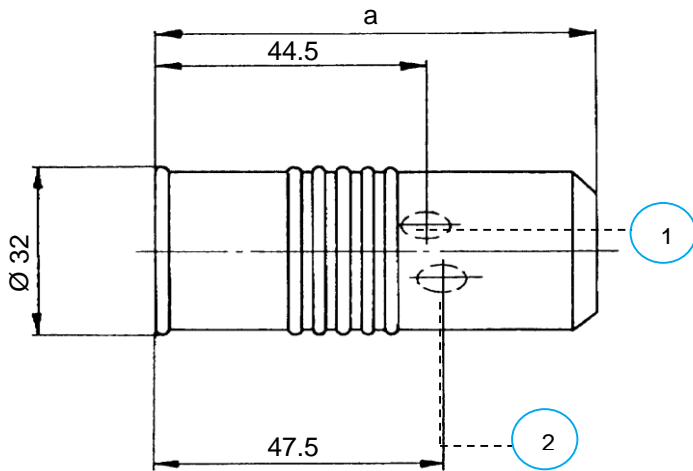


Preferably for Steadycams

Description	Cut length in m	Part Nubmer
Triaxial Cable Perivox/Leoni Triax 5 PUR 75 Ohm, red, 13-1029-1003 1. Interface: Cable Plug 1-4777-4700 2. Interface: Cable Socket 1-4797-4740	1.5	21-3048-1037
	2.0	21-2464-1037
	2.5	21-2735-1037
	3.0	21-2605-1037

ARD Triax Accessories & Spare Parts



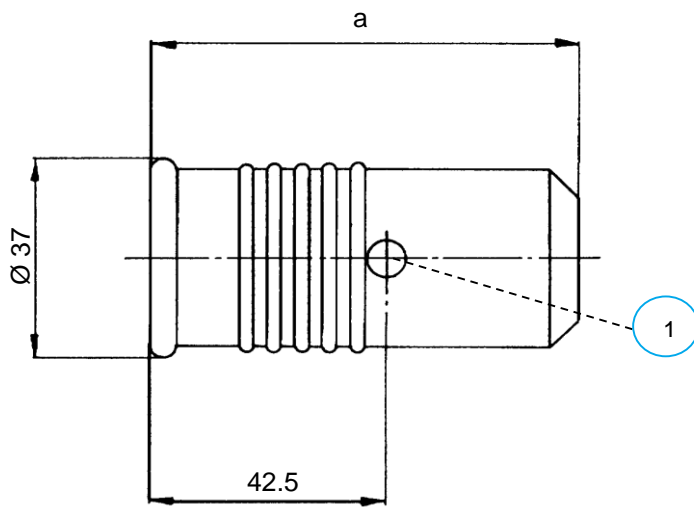


Accessories

- 1 for Cable Sockets: Hole for mounting screw of Protective Cap Part-No. 2-1780-7463 or Cheese-head screw Part-No. 2-1852-3099 (extra order)
- 2 for Cable Plugs: Hole for mounting screw of Protective Cap Part-No. 2-1779-7463 or Cheese-head screw Part-No. 2-1852-3099 (extra order)

Dimension ,a'	Cable Group*	Part Number
81	A bis E, N	2-3056-3363

*see Cable Table Triaxial Cable

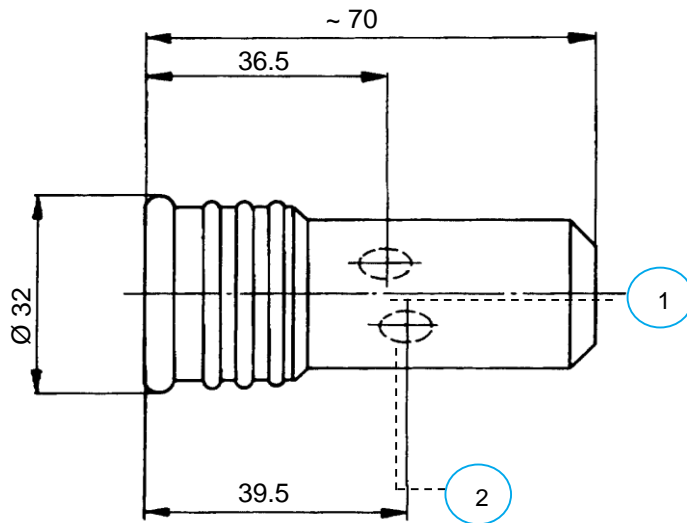


Accessories

- 1 Hole for mounting screw of Protective Cap or Cheese-head screw Part-No. 2-1852-3099 (extra order)

Dimension ,a'	Cable Group*	Part Number
77.5	F	2-3221-3363

*see Cable Table Triaxial Cable

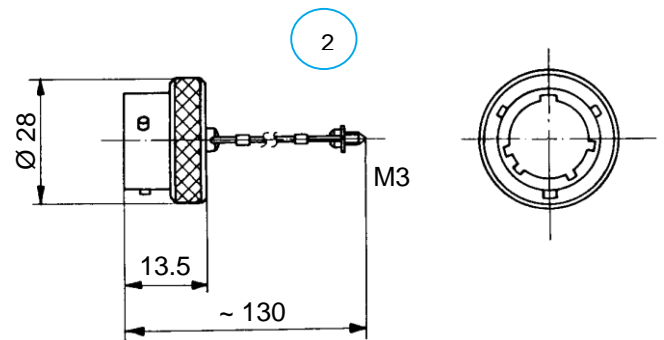
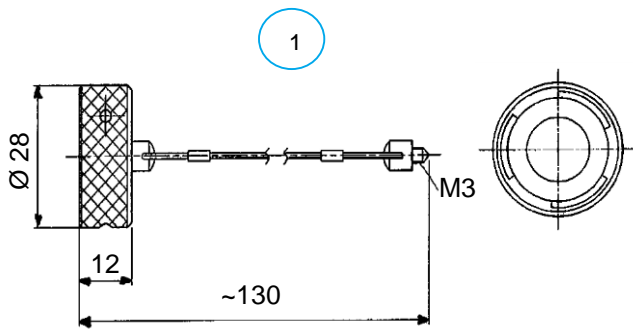


Accessories

- 1 for Cable Sockets: Hole for mounting screw of Protective Cap Part-No. 2-1780-7463 or Cheese-head screw Part-No. 2-1852-3099 (extra order)
- 2 for Cable Plugs: Hole for mounting screw of Protective Cap Part-No. 2-1779-7463 or Cheese-head screw Part-No. 2-1852-3099 (extra order)

Dimension ,a'	Cable Group*	Part Number
70	I	2-3627-3363

*see Cable Table Triaxial Cable



Accessories

- 1 for Plugs
- 2 for Sockets

Part Number	
Protective Cap for Plugs	Protective Cap for Sockets
2-1779-7463	2-1780-7463

19", 2U, single-row, Front panel 30° angled, anodized

Front:

1 x 8 Mounting holes for ARD Triax-Connector (series 47) with square flange,
40 pcs. Button Screws Torx M3x8 for fixing the named Connectors.

Front- and rear side with one label.

Accessories (extra order): Hole Caps Part-No. 2-6245-8967
(Aluminum painted to RAL 9005, 30 x 30 mm,
4 fixing holes \varnothing 3.2 mm)

Front view



Rear view



Part Number

22-1207-1008

19", 2U, single-row, Front panel 30° angled, Aluminum, painted to RAL 9005

Front:

1 x 8 Mounting holes for ARD Triax-Connector (series 47) with square flange, 40 pcs. Button Screws Torx M3x8 for fixing the named Connectors.

Front- and rear side with one label.

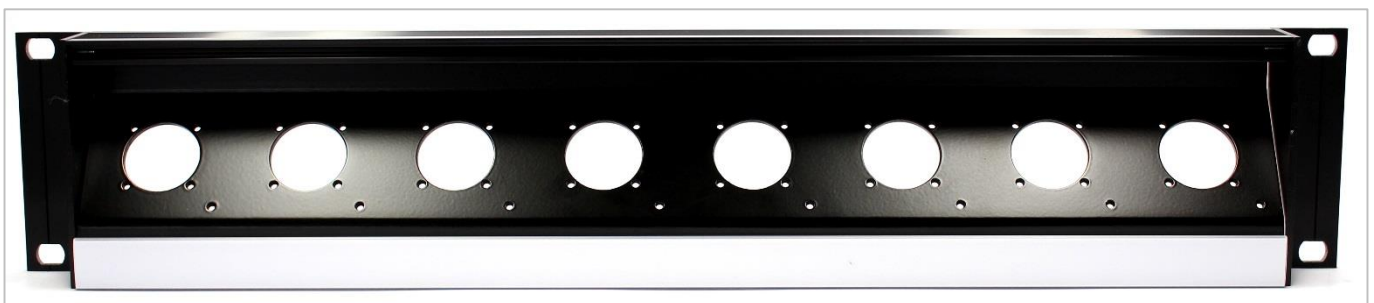
Accessories (extra order): Hole Caps Part-No. 2-6245-8967
(Aluminum single-sided painted to RAL 9005, 30 x 30 mm, 4 fixing holes \varnothing 3.2 mm)



Front view



Rear view



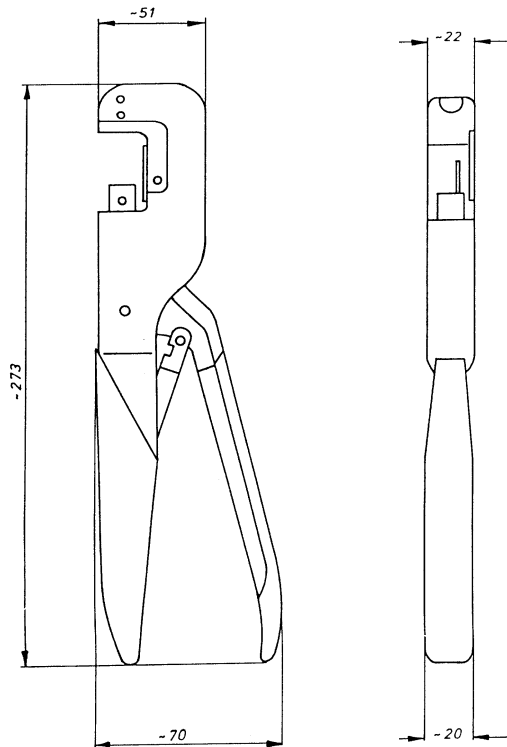
Part Number

22-1227-1008

ARD Triax Tool



Crimp Plier

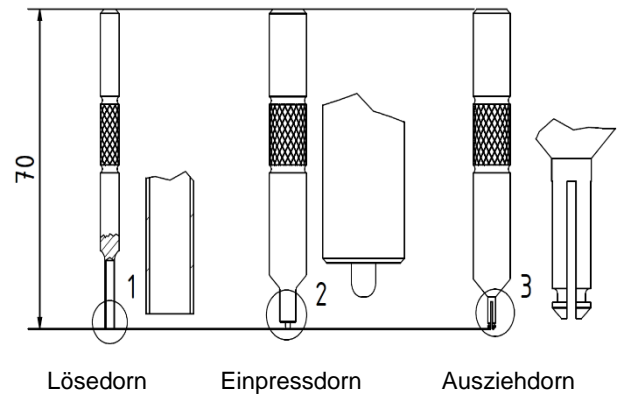
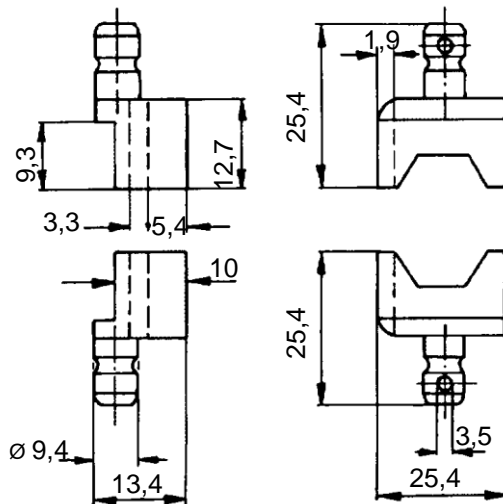


Size 1

Accessories: inclusive Pull-off lever

Part Number	Description
90-1022-1000	Application with crimping dies – Size 1 (Ø 14 mm max.)

DAMAR & HAGEN



Crimp Dies 90-xxxx-1100-14 incl. assembly-kit, consists of:

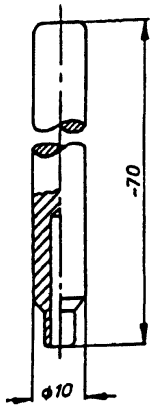
- 1 Release mandrel to release the contact pins and -sockets
- 2 Press-in mandrel to press-in the guide bush
- 3 Pull-out mandrel to pull out the guide bush

Accessories: 2 Clamping Sleeves
Expanding-mandrel (extra order)

Application with crimping plier Part-No. 90-1022-1000 (size 1)

Cable Group*	Connection	Part Number
A und B	Inner conductor Inner shield Outer shield with cable clamp Outer shield without cable clamp	90-1017-1100-14 (incl. assembly-kit 90-1241-2217) 90-1017-1100-14 (incl. assembly-kit 90-1241-2217) 90-1031-1100 soldered connection
D und E	Inner conductor Inner shield Outer shield with cable clamp Outer shield without cable clamp	90-1038-1100-14 (incl. assembly-kit 90-1241-2217) 90-1038-1100-14 (incl. assembly-kit 90-1241-2217) 90-1051-1100 soldered connection
F	Inner conductor Inner shield Outer shield with cable clamp Outer shield without cable clamp	90-1053-1100-14 (incl. assembly-kit 90-1241-2217) 90-1051-1100 90-1052-1100 soldered connection
I	Inner conductor Inner shield Outer shield with cable clamp Outer shield without cable clamp	90-1017-1100-14 (incl. assembly-kit 90-1241-2217) 90-1017-1100-14 (incl. assembly-kit 90-1241-2217) 90-1017-1100 soldered connection
N	Inner conductor Inner shield Outer shield with cable clamp Outer shield without cable clamp	90-1030-1100-14 (incl. assembly-kit 90-1241-2217) 90-1030-1100-14 (incl. assembly-kit 90-1241-2217) 90-1051-1100 soldered connection

Expanding Mandrel



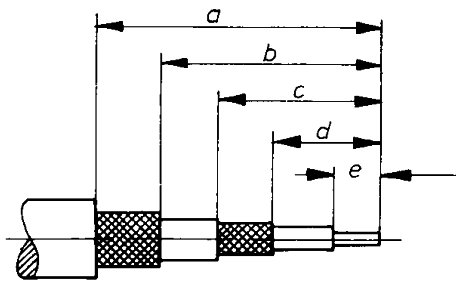
Usage for expanding the screening braid of Coaxial- and Triaxial Cables.

Diameter*	Part Number
0.8 – 0.9	90-1064-1201
1.0 – 1.1	90-1280-1201
1.2 – 1.3	90-1281-1201
1.4 – 1.5	90-1282-1201
1.5 – 1.6	90-1033-1201
1.6 – 1.7	90-1283-1201
1.8 – 1.9	90-1284-1201
2.0 – 2.1	90-1285-1201
2.1 – 2.2	90-1195-1201
2.2 – 2.3	90-1286-1201
2.4 – 2.5	90-1287-1201
2.5 – 2.6	90-1034-1201
2.6 – 2.7	90-1288-1201
2.8 – 2.9	90-1289-1201
3.0 – 3.1	90-1035-1201
3.2 – 3.3	90-1290-1201
3.4 – 3.5	90-1291-1201
3.6 – 3.7	90-1292-1201
3.7 – 3.8	90-1004-1201

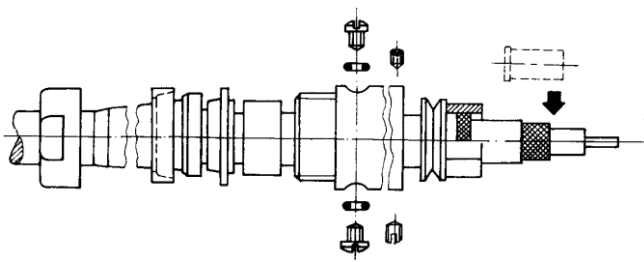
Diameter*	Part Number
3.8 – 3.9	90-1293-1201
4.0 – 4.2	90-1294-1201
4.3 – 4.5	90-1295-1201
4.6 – 4.8	90-1296-1201
4.9 – 5.1	90-1036-1201
5.2 – 5.4	90-1297-1201
5.5 – 5.7	90-1298-1201
5.8 – 6.0	90-1299-1201
6.1 – 6.3	90-1300-1201
6.4 – 6.6	90-1005-1201
6.7 – 6.9	90-1301-1201
7.0 – 7.3	90-1302-1201
7.4 – 7.5	90-1037-1201
7.4 – 7.7	90-1303-1201
7.9 – 8.0	90-1196-1201
7.8 – 8.1	90-1304-1201
8.2 – 8.5	90-1305-1201

*Diameter refer to the diameter of the dielectric, including any additional shield by aluminum- or copper film.

ARD Triax Assembly Instructions

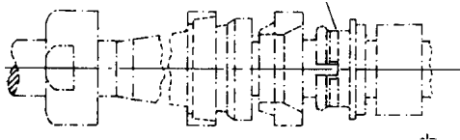


Strip the insulation from the cable as specified in the table.

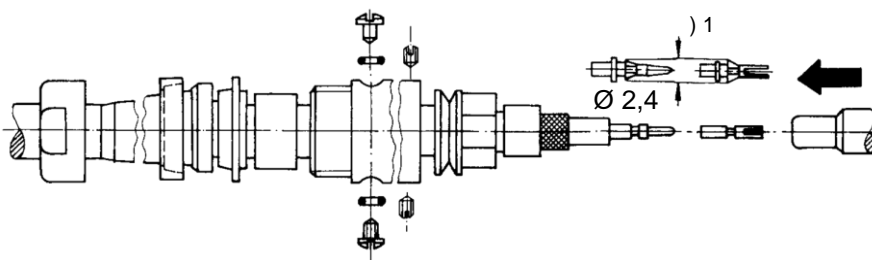


Reinforcement sleeve to stiffen the dielectric only for thin, highly-flexible triax cables having 8 or 9 mm diameter with inner flexible lead.

Only for additional clamping of the cable sheath

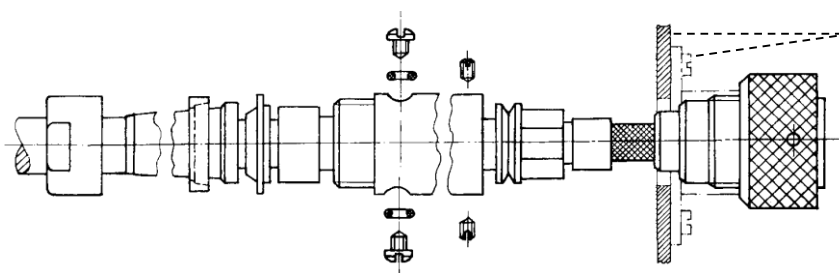


Slide the cable clamp and fittings over the cable. Place the outer braiding around the tension relief ring, slide over the large clamping sleeve, and crimp using the crimping pliers. (Exception: The second shield is soldered for cables ≥ 16 mm nominal diameter; no clamping sleeve is required in this case.)

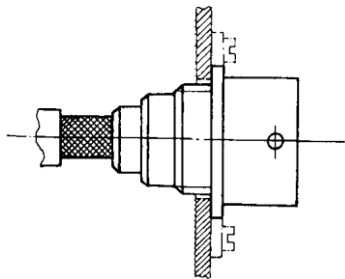


Slide the small clamping sleeve over the cable and use the expanding mandrel (if available) to widen the inner braiding. Slide the contact pin or contact socket as far as the dielectric on the inner conductor and crimp using the crimping pliers.

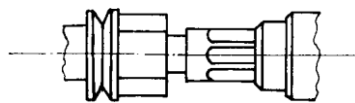
) 1 The release mandrel that has been inserted from the connector side can be used to remove changed contact pins and sockets again after they have been snapped in. If a contact pin or a contact socket has been removed, **check that the spring ring has a diameter of 2.4 before reinserting!** (Expand the spring ring if necessary.)



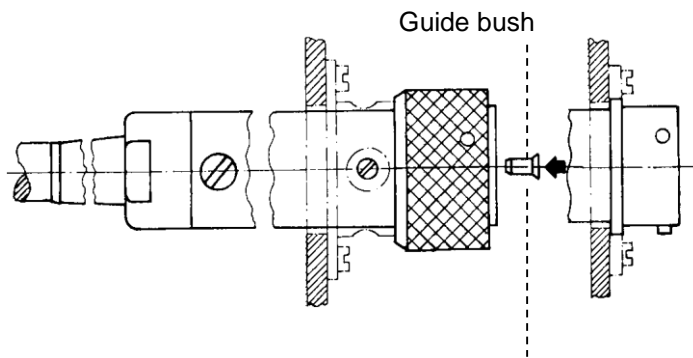
Applies only for panel cable sockets or panel cable plugs.



Insert the cable in the plug or socket connection until the contact pin or contact socket can be felt to engage. Then slide the clamping sleeve over the inner braiding.



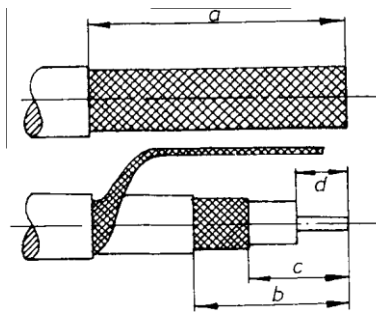
Place the plug or socket with the cable in the crimping pliers so that the plug or socket body is positioned at the press-in indentation, then crimp.



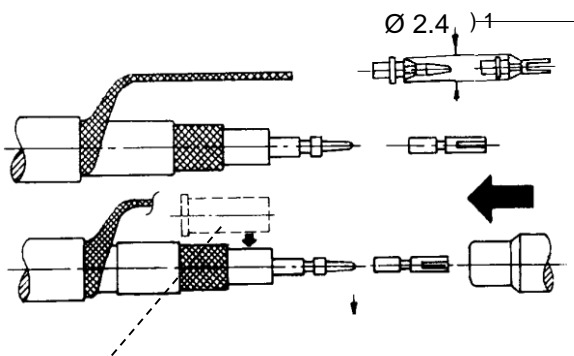
Slide forward the outer sleeve, screw tight and fasten using two threaded pins. Use two cheese-head screws to attach the tension relief ring. Finally screw the pressure nut with gasket and anti-kink sleeve (if available) on the outer sleeve.

Applies only for bushes: Impress guide bush using mandrel after the assembly has been completed correctly.

Assembly Instruction	a	b	c	d	e
101	-	-	24.0	15.0	4.0
102	49.0	26.0	24.0	15.0	4.0
104	51.5	28.5	24.0	15.0	4.0



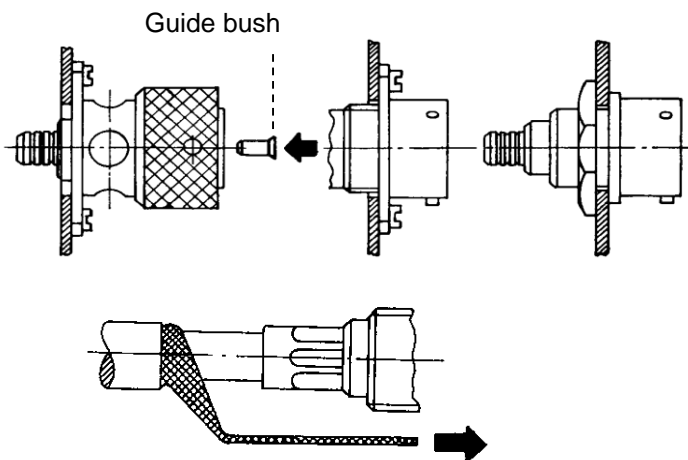
Strip the insulation from the cable as specified in the table. Unravel the outer braiding and place it to the side. Shorten the cable and strip the insulation from the remaining cable.



Slide the clamping sleeve over the cable and use the expanding mandrel (if available) to widen the inner braiding.

Slide the contact pin or contact socket as far as the dielectric on the inner conductor and crimp using the crimping pliers.

Reinforcement sleeve to stiffen the dielectric only for thin, highly-flexible triax cables having 8 mm or 9 mm diameter with inner flexible lead.



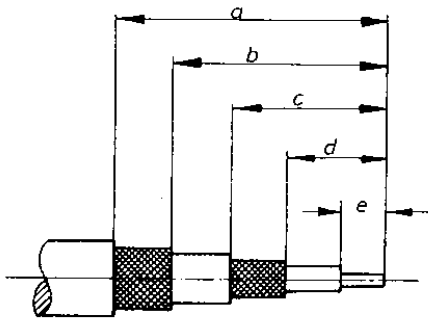
Fix panel cable plug/panel cable socket onto the mounting panel.

Applies only for bushes: Impress guide bush using mandrel after assembly has been completed correctly.

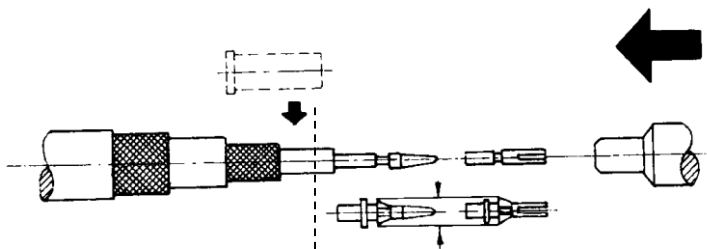
Insert the cable in the plug or socket connection until the contact pin or contact socket can be felt to engage. Then slide the clamping sleeve over the inner braiding. Place the plug or socket with the cable in the crimping pliers so that the plug or socket body is positioned at the press-in indentation, then crimp.

)¹ The release mandrel that has been inserted from the connector side can be used to remove changed contact pins and sockets again after they have been snapped in. If a contact pin or a contact socket has been removed, **check that the spring ring has a diameter of 2.4 before reinserting!** (Expand the spring ring if necessary.)

Assembly Instruction	a	b	c	d
103	-	24.0	15.0	4.0
105	49.0	24.0	15.0	4.0

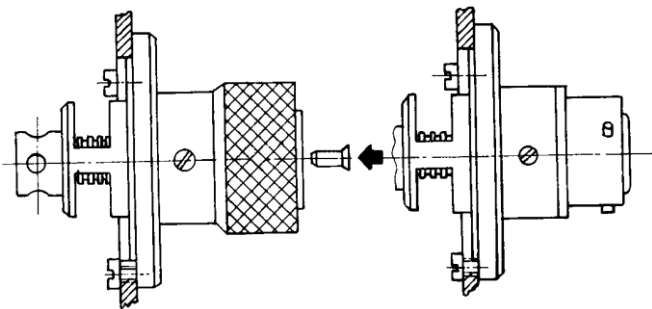


Strip the insulation from the cable as specified in the table.



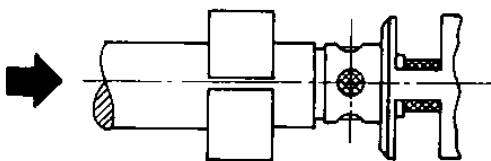
Use the expanding mandrel (if available) to widen the inner braiding. Slide the contact pin or contact socket as far as the dielectric on the inner conductor and crimp or solder using the crimping pliers.

Reinforcement sleeve to stiffen the dielectric only for thin, highly-flexible triax cables having 8 mm or 9 mm diameter with inner flexible lead.



Fix panel cable plug/panel cable socket onto the mounting panel.

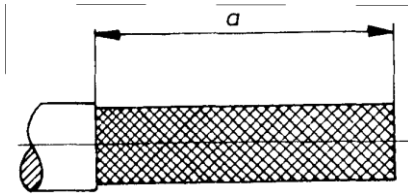
Applies only for bushes: Impress guide bush using mandrel after the assembly has been completed correctly.



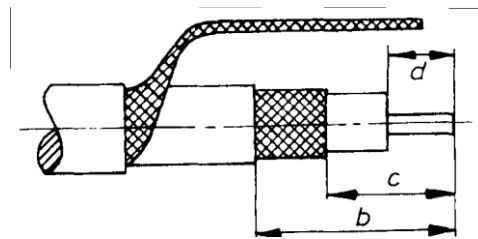
Insert the cable in the plug or socket connection until the contact pin or contact socket can be felt to engage. Then solder the two shields. Slide the shield sleeve on the plug-and-socket connection.

) 1 The release mandrel that has been inserted from the connector side can be used to remove changed contact pins and sockets again after they have been snapped in. If a contact pin or a contact socket has been removed, **check that the spring ring has a diameter of 2.4 before reinserting!** (Expand the spring ring if necessary.)

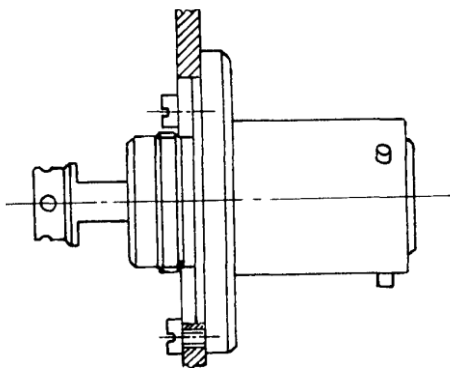
Assembly Instruction	a	b	c	d	e
106	33.0	27.0	24.0	15.0	4.0



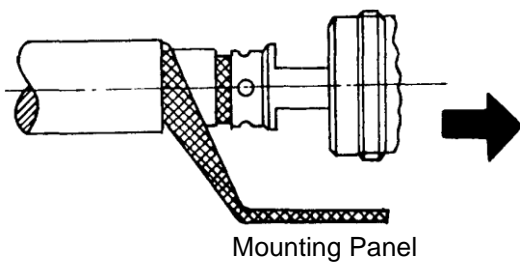
Strip the insulation from the cable as specified in the table.



Strip the insulation from the cable as specified in the table. Unravel the outer braiding and place it to the side. Shorten the cable and strip the insulation from the remaining cable.

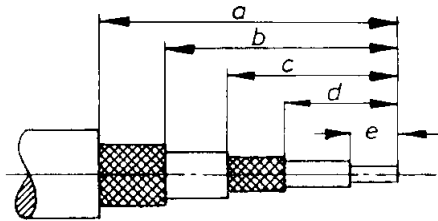


Fix the panel cable plug onto the mounting panel.

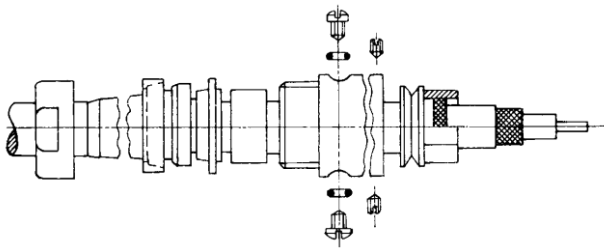


Insert the cable in the plug-in connection. Finally, solder the inner conductor and the inner shield.

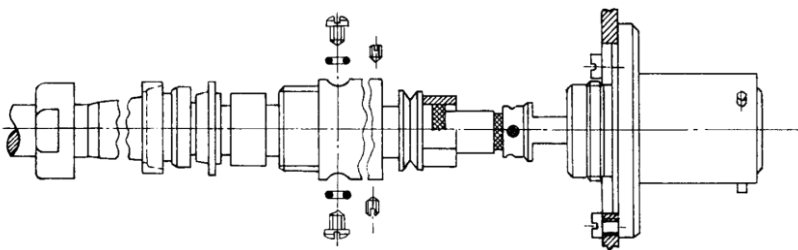
Assembly Instruction	a	b	c	d
107	-	17.0	8.0	4.0
108	52.0	17.0	8.0	4.0



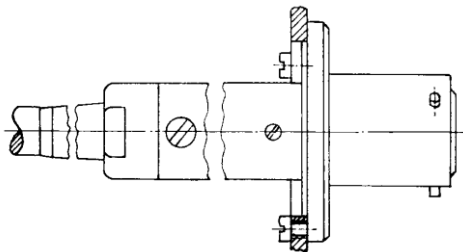
Strip the insulation from the cable as specified in the table.



Slide the cable clamp and fittings over the cable. Place the outer braiding around the tension relief ring, slide over the large clamping sleeve, and solder or crimp using the crimping pliers. (For soldering, no clamping sleeve is required.)



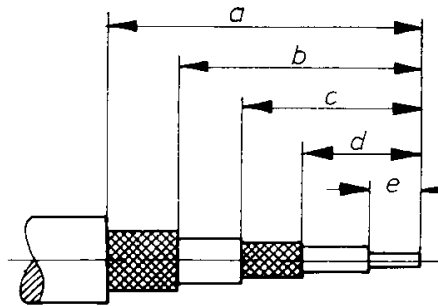
Fix the panel cable plug onto the mounting panel.



Insert the cable in the plug-in connection. Then solder the inner conductor and the inner shield. Slide forward the outer sleeve, screw tight and fasten using two threaded pins. Use two cheese-head screws to attach the tension relief ring. Finally screw the pressure nut with gasket and Strain Relief Sleeve (if available) on the outer sleeve.

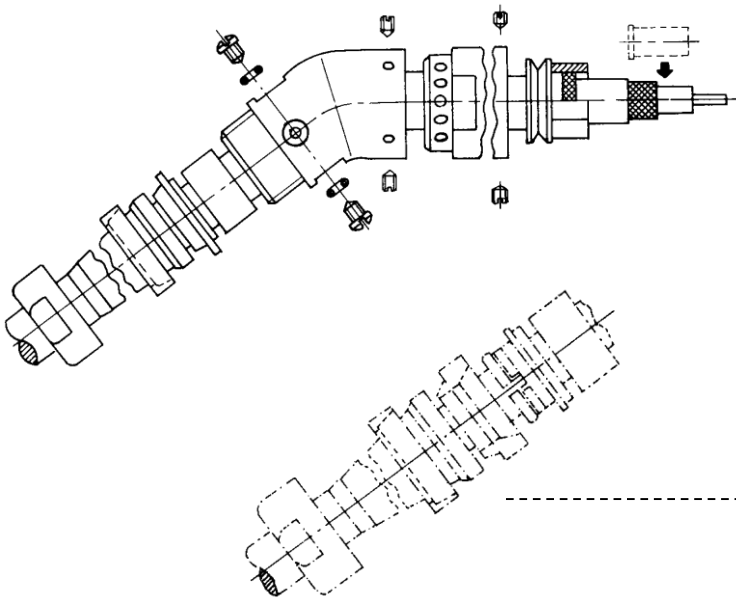
) 1 The release mandrel that has been inserted from the connector side can be used to remove changed contact pins and sockets again after they have been snapped in. If a contact pin or a contact socket has been removed, **check that the spring ring has a diameter of 2.4 before reinserting!** (Expand the spring ring if necessary.)

Assembly Instruction	a	b	c	d	e
109	-	-	17.0	8.0	4.0
110	40.0	17.0	17.0	8.0	4.0



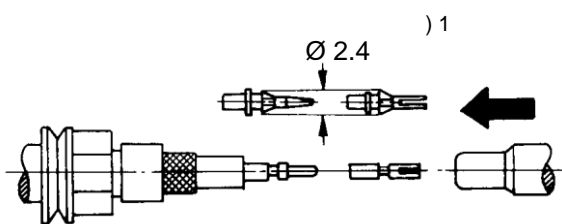
Strip the insulation from the cable as specified in the table.

Reinforcement sleeve to stiffen the dielectric only for thin, highly-flexible triax cables having 8 mm or 9 mm diameter with inner flexible lead.



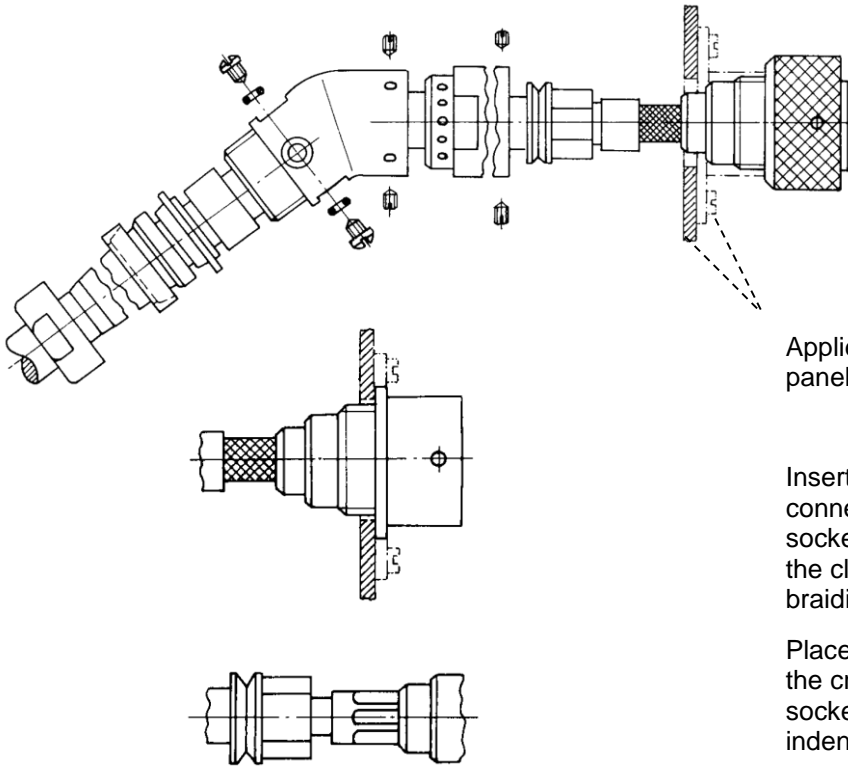
Slide the cable clamp and fittings over the cable. Place the outer braiding around the tension relief ring, slide over the large clamping sleeve, and crimp using the crimping pliers.

Only for additional clamping of the cable sheath



Slide the clamping sleeve over the cable and use the expanding mandrel (if available) to widen the inner braiding. Slide the contact pin or contact socket as far as the dielectric on the inner conductor and crimp using the crimping pliers.

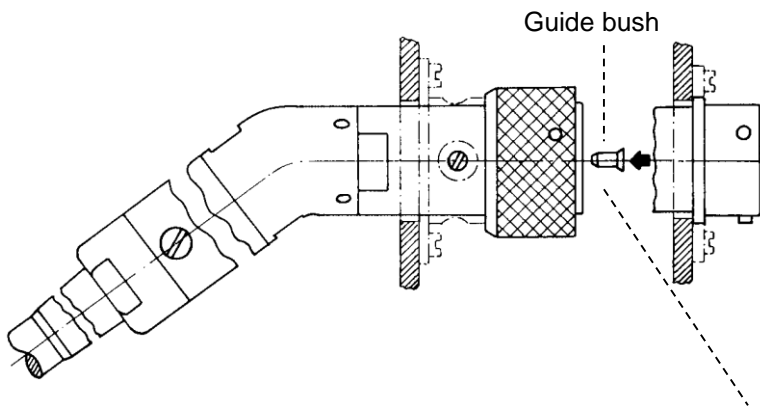
) 1 The release mandrel that has been inserted from the connector side can be used to remove changed contact pins and sockets again after they have been snapped in. If a contact pin or a contact socket has been removed, **check that the spring ring has a diameter of 2.4 before reinserting!** (Expand the spring ring if necessary.)



Applies only for panel cable sockets or panel cable plugs.

Insert the cable in the plug or socket connection until the contact pin or contact socket can be felt to engage. Then slide the clamping sleeve over the inner braiding.

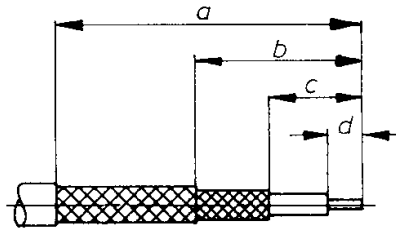
Place the plug or socket with the cable in the crimping pliers so that the plug or socket body is positioned at the press-in indentation, then crimp.



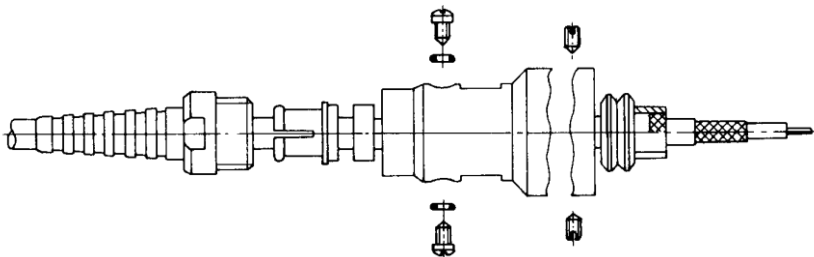
Slide forward the distance sleeve, screw tight and fasten using two threaded pins. Slide forward the outer sleeve and use 4 threaded pins to fasten in the appropriate position (can be adjusted radially in 30° steps). Use 2 cheese-head screws to attach the tension relief ring. Finally Screw the pressure nut with gasket and Strain Relief Sleeve (if available) on the outer sleeve.

Applies only for bushes
Impress guide bush using mandrel after the assembly has been completed correctly.

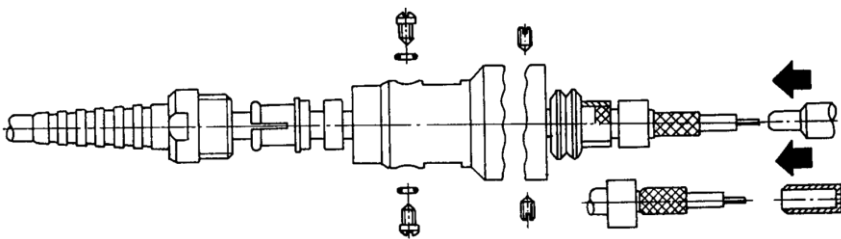
Assembly Instruction	a	b	c	d	e
111	49.0	34.0	24.0	15.0	4.0
112	51.5	36.5	24.0	15.0	4.0
113	-	-	24.0	15.0	4.0



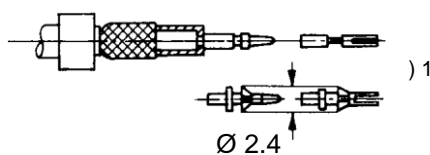
Strip the insulation from the cable as specified in the table.



Slide the cable clamp and fittings over the cable. Place the outer braiding around the tension relief ring, slide over the large clamping sleeve, and crimp using the crimping pliers.

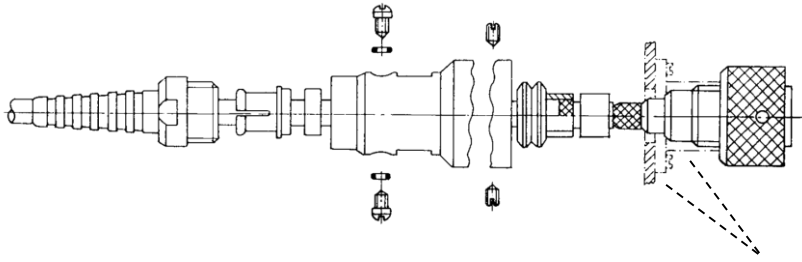


Slide the second clamping sleeve over the cable and use the expanding mandrel to widen the inner braiding. Finally slide the reinforcement sleeve on the dielectric.

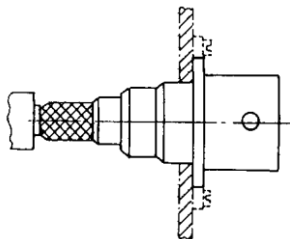


Slide the contact pin or contact socket as far as the reinforcement sleeve on the inner conductor and crimp using the crimping pliers.

) 1 The release mandrel that has been inserted from the connector side can be used to remove changed contact pins and sockets again after they have been snapped in. If a contact pin or a contact socket has been removed, **check that the spring ring has a diameter of 2.4 before reinserting!** (Expand the spring ring if necessary.)



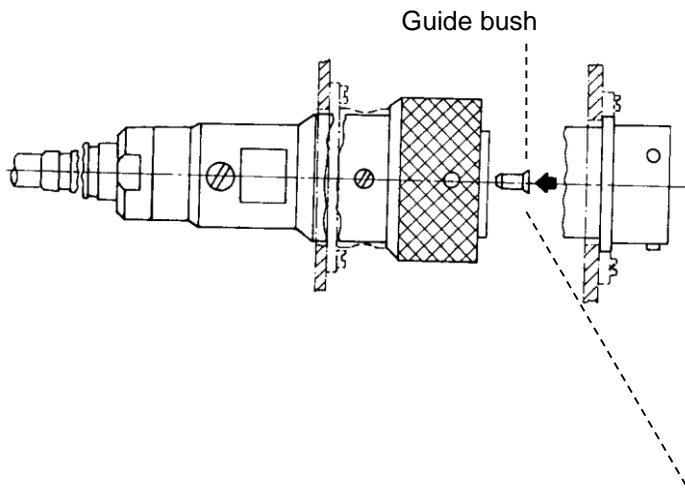
Applies only for panel cable sockets or panel cable plugs.



Insert the cable in the plug or socket connection until the contact pin or contact socket can be felt to engage. Then slide the clamping sleeve over the inner braiding.



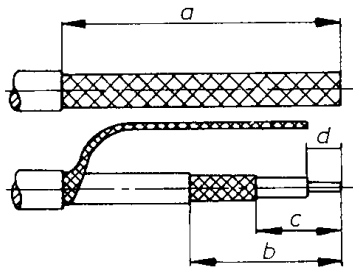
Place the plug or socket with the cable in the crimping pliers so that the plug or socket body is positioned at the press-in indentation, then crimp.



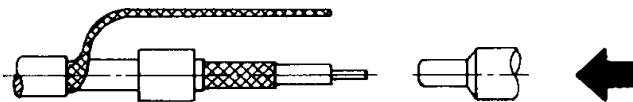
Slide forward the outer sleeve, screw tight and fasten using two threaded pins. Use two cheese-head screws to attach the tension relief ring. Finally screw the pressure screw, clamping ring and gasket onto the outer sleeve. Slide the Strain Relief Sleeve on the pressure screw.

Applies only for bushes:
Impress guide bush using mandrel after the assembly has been completed correctly.

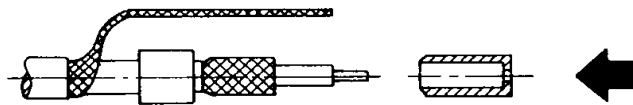
Assembly Instruction	a	b	c	d
114	42.0	23.0	13.0	5.0
115	44.5	23.0	13.0	5.0



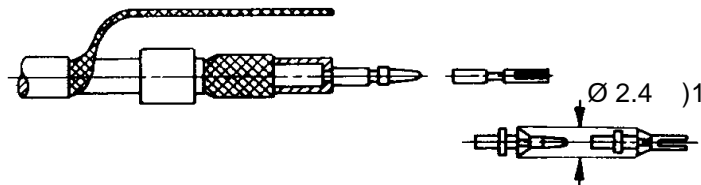
Strip the insulation from the cable as specified in the table.



Unravel the outer braiding and place it to the side. Strip the insulation from the remaining cable.

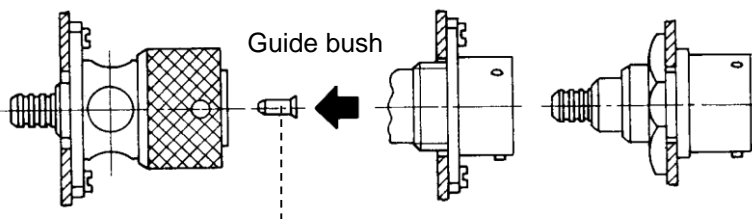


Slide the clamping sleeve over the cable and use the expanding mandrel (if available) to widen the inner braiding.



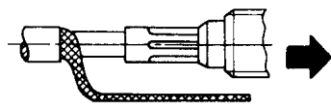
Slide the reinforcement sleeve on the cable to stiffen the dielectric.

Slide the contact pin or contact socket as far as the dielectric on the inner conductor and crimp using the crimping pliers.



Fix panel cable plug/panel cable socket onto the mounting panel.

Applies only for bushes: Impress guide bush using mandrel after the assembly has been completed correctly.

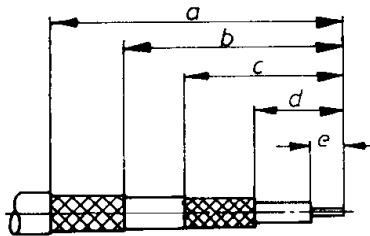


Mounting Panel

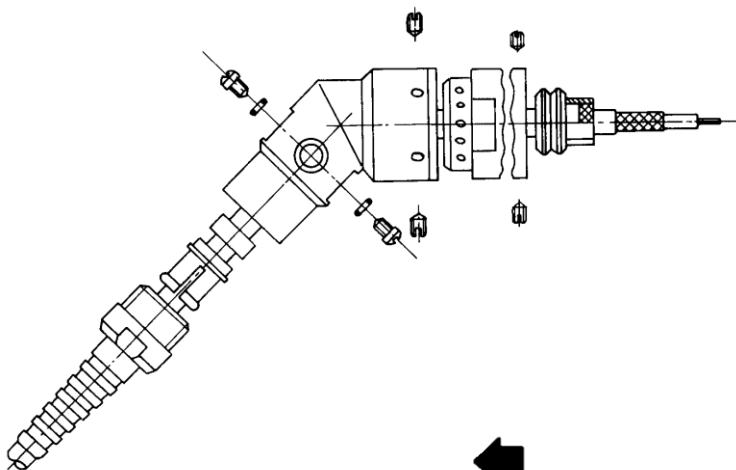
Insert the cable in the plug or socket connection until the contact pin or contact socket can be felt to engage. Then slide the clamping sleeve over the inner braiding. Place the plug or socket with the cable in the crimping pliers so that the plug or socket body is positioned at the press-in indentation, then crimp.

) 1 The release mandrel that has been inserted from the connector side can be used to remove changed contact pins and sockets again after they have been snapped in. If a contact pin or a contact socket has been removed, **check that the spring ring has a diameter of 2.4 before reinserting!** (Expand the spring ring if necessary.)

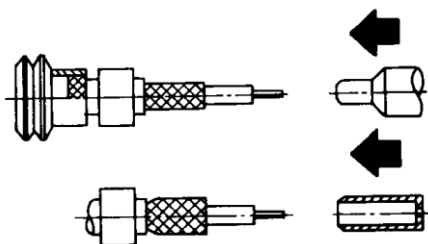
Montageanleitung	a	b	c	d
116	42.0	23.0	13.0	5.0



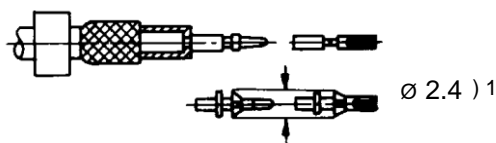
Strip the insulation from the cable as specified in the table.



Slide the cable clamp and cover components over the cable. Place the outer braiding around the tension relief ring, slide over the clamping sleeve, and crimp using the crimping pliers.

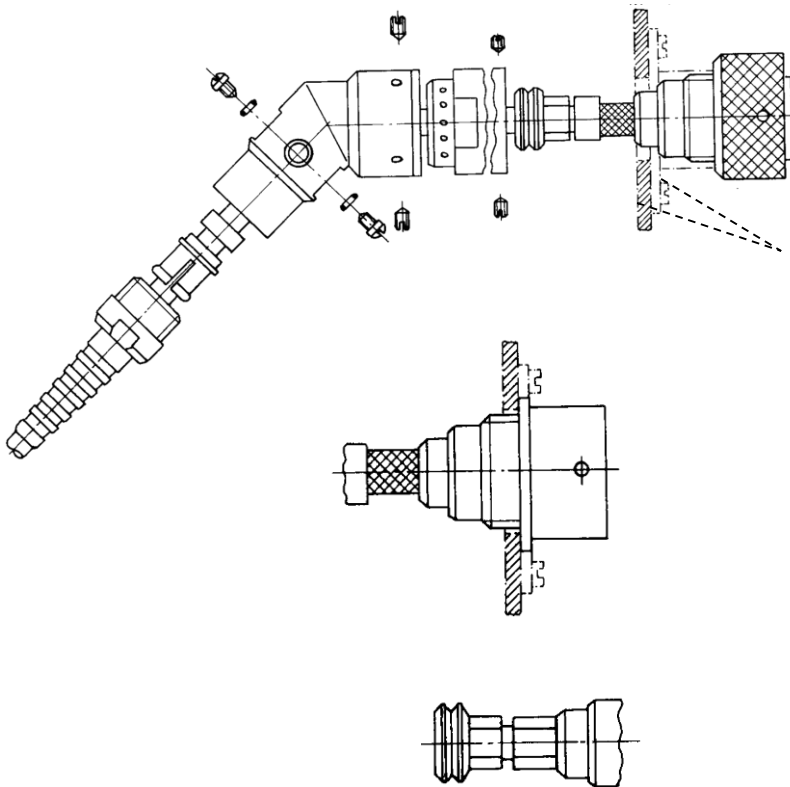


Slide the second clamping sleeve over the cable and use the expanding mandrel to widen the inner braiding. Finally slide the reinforcement sleeve on the dielectric.



Slide the contact pin or contact socket as far as the strengthening sleeve on the inner conductor and crimp using the crimping pliers.

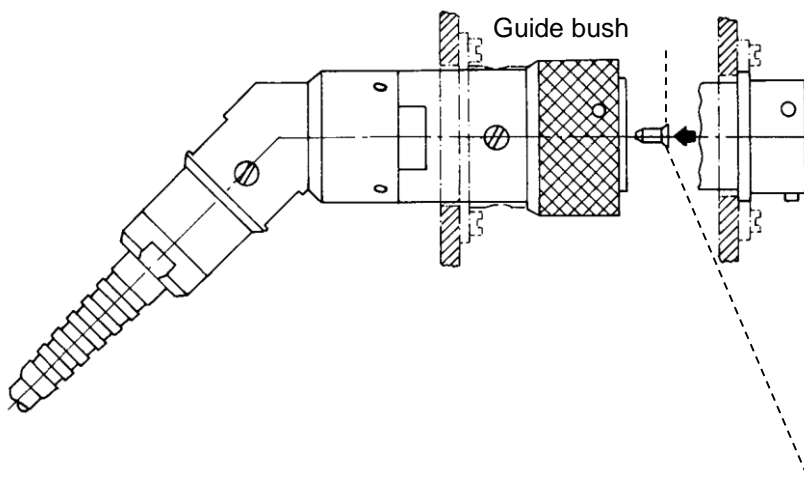
) 1 The release mandrel that has been inserted from the connector side can be used to remove changed contact pins and sockets again after they have been snapped in. If a contact pin or a contact socket has been removed, **check that the spring ring has a diameter of 2.4 before reinserting!** (Expand the spring ring if necessary.)



Applies only for panel cable sockets or panel cable plugs.

Insert the cable in the plug or socket connection until the contact pin or contact socket can be felt to engage. Then slide the clamping sleeve over the inner braiding.

Place the plug or socket with the cable in the crimping pliers so that the plug or socket body is positioned at the press-in indentation, then crimp.



Slide forward the distance sleeve, screw tight and fasten using 2 threaded pins. Slide forward the outer sleeve and use 4 threaded pins to fasten in the appropriate position (can be adjusted radially in 30° steps). Use 2 cheese-head screws to attach the tension relief ring. Then screw the pressure screw, clamping ring and gasket onto the outer sleeve. Slide the Strain Relief Sleeve on the pressure screw!

Applies only for bushes: Impress guide bush using mandrel after the assembly has been completed correctly.

Assembly Instruction	a	b	c	d	e
117	49.0	30.0	23.0	13.0	5.0
118	51.5	32.5	23.0	13.0	5.0

Cable Table – Triaxial Cable sorted by Manufacturer

Manufacturer	Part Number	Part Number Damar & Hagen	Cable Type		Construction	Cable sheath (mm)	Ø	Cable Group
Bedeac	188 308 00	-	Superflex	8 TPE	1.0Ls/4.5s	8.5	8	A
	206 908 00	-	Triax	8 PUR	1.0s/4.5s	8.5		
	188 808 00	-	Superflex	11 TPE	1.4Ls/6.0s	11.2	11	D
	218 408 00	-	Triax	11 PUR	1.4s/6.5s	11.0		
	185 808 00	-	Triax	14 PUR	2.1Ls/9.7s	14.4	14	F
	204 208 00	-	Superflex	14 TPE	2.1Ls/9.7s	14.4		
Belden	7783A	-	Triax	8 PVC	1.0Ls/4.5s	8.4	8	A
	7783ECH	-	Triax	8 FRNC	1.0/4.6	8.4		
	7783ENH	-	Triax	8 FRNC	1.0/4.6	8.4		
	7784AF	-	Triax	11 PVC	1.4Ls/6.5s	11.3	11	D
	7784ANH	-	Triax	11 FRNC	1.4s/6.5s	11.3		
	7784APU	-	Triax	11 PUR	1.4s/6.5s	11.3		
	7784AS	-	Triax	11 PVC	1.4s/6.5s	11.3		
	7784E	-	Triax	11 PVC	1.4/6.5	11.0		
	7784ECH	-	Triax	11 FRNC	1.4/6.5	11.0		
	7784ENH	-	Triax	11 FRNC	1.4/6.5	11.0	14	F
	7785A	-	Triax	14 PVC	2.2Ls/9.7s	14.5		
	7785ANH	-	Triax	14 FRNC	2.2Ls/9.7s	14.5		
	7785ECH	-	Triax	14 FRNC	2.2L/9.7	14.5		
	7785ENH	-	Triax	14 FRNC	2.2L/9.7	14.5		
Draka	60014203	13-1017-1003	Triax	8 PUR	1.0s/4.5s	8.4	8	A
	60014208	13-1015-1003	Triax	8 PVC	1.0s/4.5s	8.4		
	60014250	13-1054-1003	Triflex	8 PVC	1.0Ls/4.5s	8.4		
	60014267	13-1098-1003	Triflex	8 PUR	1.0Ls/4.5s	8.4		
	60014554	13-1062-1003	Triax	8 FRNC	1.0s/4.5s	8.4		
	60014270	-	Triflex	8/1 DMC	1.0Ls/4.5s	8.9	9	B
	60009614	13-1048-1003	Triax	11 FRNC	1.4s/6.5s	10.9	11	D
	60014216	13-1012-1003	Triax	11 PVC	1.4s/6.5s	10.9		
	60014219	-	Triax	11 PE	1.4s/6.5s	10.9		
	60014222	13-1020-1003	Triax	11 PUR	1.4s/6.5s	10.9		
	60014224	-	Triax	11 PUR	1.4s/6.5s	10.9		
	60014257	13-1056-1003	Triflex	11 PVC	1.4Ls/6.5s	10.9		
	60014276	13-1081-1003	Triflex	11 PUR	1.4Ls/6.5s	10.9	12	E
	60014245	13-1021-1003	Triax	11/1PUR	1.4s/6.5s	12.2		
	60014283	13-1121-1003	Triax	11 PUR	1.75s/7.5s	11.9		N
	60011506	13-1013-1003	Triax	14 PVC	2.2Ls/9.7s	14.5	14	F
	60013643	-	Triax	14 FRNC	2.2Ls/9.7s	14.5		
	60014238	-	Triax	14 PE	2.2Ls/9.7s	14.5		
	60014242	13-1024-1003	Triax	14 PUR	2.2Ls/9.7s	14.5		
Fujikura	-----	-	Triax	9 PUR	1.0s/4.8s	8.6	9	B
Leoni/Perivox	-----	13-1029-1003	Triax	5 PUR	0.55L/2.3	5.0	5	I
	310815	-	Triax	8 Flex	1.0Ls/4.5s	8.3	9	B
	310801	-	Triax	8 PVC	1.0s/4.7s	8.5		
	310803	-	Triax	8 PUR	1.0s/4.7s	8.5		
	310804	-	Triax	8 FRNC	1.0s/4.7s	8.5		
	310903	-	Triax	9 PUR	1.0Ls/4.5s	9.0		
	311101	-	Triax	11 PVC	1.4s/6.5s	11.0	11	D
	311103	-	Triax	11 PUR	1.4s/6.5s	11.0		
	311104	-	Triax	11 FRNC	1.4s/6.5s	11.0		
	311115	-	Triax	11 Flex	1.4Ls/6.0s	11.2		

Size details from documents provided by the cable manufacturers. Consequently, we cannot guarantee the correctness of the details.



Cable Table - Triaxial Cable sorted by Cable -Ø

Manufacturer	Part Number	Part Number Damar & Hagen	Cable Type		Construction	Cable sheath (mm)	Ø	Cable Group
Leoni/Perivox	-----	13-1029-1003	Triax	5 PUR	0.55L/2.3	5.0	5	I
Bedeia	188 308 00	-	Superflex	8 TPE	1.0Ls/4.5s	8.5	8	A
Bedeia	206 908 00	-	Triax	8 PUR	1.0s/4.5s	8.5		
Belden	7783A	-	Triax	8 PVC	1.0Ls/4.5s	8.4		
Belden	7783ECH	-	Triax	8 FRNC	1.0/4.6	8.4		
Belden	7783ENH	-	Triax	8 FRNC	1.0/4.6	8.4		
Draka	60014203	13-1017-1003	Triax	8 PUR	1.0s/4.5s	8.4		
Draka	60014208	13-1015-1003	Triax	8 PVC	1.0s/4.5s	8.4		
Draka	60014250	13-1054-1003	Triflex	8 PVC	1.0Ls/4.5s	8.4		
Draka	60014267	13-1098-1003	Triflex	8 PUR	1.0Ls/4.5s	8.4		
Draka	60014554	13-1062-1003	Triax	8 FRNC	1.0s/4.5s	8.4		
Leoni/Perivox	310815	-	Triax	8 Flex	1.0Ls/4.5s	8.3		
Draka	60014270	-	Triflex	8/1 DMC	1.0Ls/4.5s	8.9	9	B
Fujikura	-----	-	Triax	9 PUR	1.0s/4.8s	8.6		
Leoni/Perivox	310801	-	Triax	8 PVC	1.0s/4.7s	8.5		
Leoni/Perivox	310803	-	Triax	8 PUR	1.0s/4.7s	8.5		
Leoni/Perivox	310804	-	Triax	8 FRNC	1.0s/4.7s	8.5		
Leoni/Perivox	310903	-	Triax	9 PUR	1.0Ls/4.5s	9.0		
Bedeia	188 808 00	-	Superflex	11 TPE	1.4Ls/6.0s	11.2	11	D
Bedeia	218 408 00	-	Triax	11 PUR	1.4s/6.5s	11.0		
Belden	7784AF	-	Triax	11 PVC	1.4Ls/6.5s	11.3		
Belden	7784ANH	-	Triax	11 FRNC	1.4s/6.5s	11.3		
Belden	7784APU	-	Triax	11 PUR	1.4s/6.5s	11.3		
Belden	7784AS	-	Triax	11 PVC	1.4s/6.5s	11.3		
Belden	7784E	-	Triax	11 PVC	1.4/6.5	11.0		
Belden	7784ECH	-	Triax	11 FRNC	1.4/6.5	11.0		
Belden	7784ENH	-	Triax	11 FRNC	1.4/6.5	11.0		
Draka	60009614	13-1048-1003	Triax	11 FRNC	1.4s/6.5s	10.9		
Draka	60014216	13-1012-1003	Triax	11 PVC	1.4s/6.5s	10.9		
Draka	60014219	-	Triax	11 PE	1.4s/6.5s	10.9		
Draka	60014222	13-1020-1003	Triax	11 PUR	1.4s/6.5s	10.9		
Draka	60014224	-	Triax	11 PUR	1.4s/6.5s	10.9		
Draka	60014257	13-1056-1003	Triflex	11 PVC	1.4Ls/6.5s	10.9		
Draka	60014276	13-1081-1003	Triflex	11 PUR	1.4Ls/6.5s	10.9		
Leoni/Perivox	311101	-	Triax	11 PVC	1.4s/6.5s	11.0		
Leoni/Perivox	311103	-	Triax	11 PUR	1.4s/6.5s	11.0		
Leoni/Perivox	311104	-	Triax	11 FRNC	1.4s/6.5s	11.0		
Leoni/Perivox	311115	-	Triax	11 Flex	1.4Ls/6.0s	11.2		
Draka	60014245	13-1021-1003	Triax	11/1PUR	1.4s/6.5s	12.2	12	E
Draka	60014283	13-1121-1003	Triax	11 PUR	1.75s/7.5s	11.9		N
Bedeia	185 808 00	-	Triax	14 PUR	2.1Ls/9.7s	14.4	14	F
Bedeia	204 208 00	-	Superflex	14 TPE	2.1Ls/9.7s	14.4		
Belden	7785A	-	Triax	14 PVC	2.2Ls/9.7s	14.5		
Belden	7785ANH	-	Triax	14 FRNC	2.2Ls/9.7s	14.5		
Belden	7785ECH	-	Triax	14 FRNC	2.2L/9.7	14.5		
Belden	7785ENH	-	Triax	14 FRNC	2.2L/9.7	14.5		
Draka	60011506	13-1013-1003	Triax	14 PVC	2.2Ls/9.7s	14.5		
Draka	60013643	-	Triax	14 FRNC	2.2Ls/9.7s	14.5		
Draka	60014238	-	Triax	14 PE	2.2Ls/9.7s	14.5		
Draka	60014242	13-1024-1003	Triax	14 PUR	2.2Ls/9.7s	14.5		

Size details from documents provided by the cable manufacturers. Consequently, we cannot guarantee the correctness of the details.

List of Part Numbers

1/2

Part Number	Page	Part Number	Page	Part Number	Page
1-2527-4704	11	1-3994-4740	13	1-4305-4703	8
1-2528-4704	11	1-3995-4740	13	1-4306-4703	8
1-2530-4704	10	1-3996-4740	13	1-4307-4703	8
1-2531-4704	10	1-3997-4740	13	1-4308-4743	16
1-2550-4744	18	1-3998-4740	13	1-4309-4743	16
1-2551-4744	18	1-3999-4740	13	1-4310-4743	16
1-2572-4704	12	1-4000-4740	13	1-4311-4743	16
1-2573-4744	19	1-4001-4740	13	1-4312-4743	16
1-2581-4704	11	1-4002-4742	15	1-4313-4743	16
1-2582-4704	10	1-4003-4742	15	1-4314-4743	16
1-2587-4744	18	1-4004-4742	15	1-4315-4743	16
1-2608-4704	9	1-4005-4742	15	1-4775-4700	5
1-2609-4704	9	1-4006-4742	15	1-4777-4700	5
1-2611-4704	9	1-4007-4742	15	1-4779-4701	6
1-2612-4744	17	1-4008-4742	15	1-4781-4701	6
1-2613-4744	17	1-4009-4742	15	1-4783-4702	7
1-2615-4744	17	1-4010-4742	15	1-4785-4702	7
1-3972-4700	5	1-4011-4742	15	1-4787-4703	8
1-3973-4700	5	1-4015-4741	14	1-4789-4703	8
1-3974-4700	5	1-4016-4741	14	1-4791-4704	11
1-3975-4700	5	1-4017-4741	14	1-4793-4704	10
1-3976-4700	5	1-4018-4741	14	1-4795-4740	13
1-3977-4700	5	1-4019-4741	14	1-4797-4740	13
1-3978-4700	5	1-4020-4741	14	1-4801-4741	14
1-3979-4700	5	1-4021-4741	14	1-4803-4741	14
1-3980-4700	5	1-4022-4741	14	1-4809-4742	15
1-3981-4700	5	1-4292-4701	6	1-4811-4742	15
1-3982-4702	7	1-4293-4701	6	1-4813-4743	16
1-3983-4702	7	1-4294-4701	6	1-4815-4743	16
1-3984-4702	7	1-4295-4701	6	1-4817-4744	18
1-3985-4702	7	1-4296-4701	6	1-8490-4700	5
1-3986-4702	7	1-4297-4701	6	1-8491-4700	5
1-3987-4702	7	1-4298-4701	6	1-8492-4740	13
1-3988-4702	7	1-4299-4701	6	1-8493-4740	13
1-3989-4702	7	1-4300-4703	8	1-8494-4702	7
1-3990-4702	7	1-4301-4703	8	1-8495-4702	7
1-3991-4702	7	1-4302-4703	8	1-8496-4704	10
1-3992-4740	13	1-4303-4703	8	1-8497-4704	11
1-3993-4740	13	1-4304-4703	8	1-8498-4742	15
				1-8499-4742	15



Part Number	Page	Part Number	Page
1-8500-4744	18	90-1284-1201	30
		90-1285-1201	30
2-1779-7463	24	90-1286-1201	30
2-1780-7463	24	90-1287-1201	30
2-3056-3363	21	90-1288-1201	30
2-3221-3363	22	90-1289-1201	30
2-3627-3363	23	90-1290-1201	30
		90-1291-1201	30
21-2464-1037	20	90-1292-1201	30
21-2605-1037	20	90-1293-1201	30
21-2735-1037	20	90-1294-1201	30
21-3048-1037	20	90-1295-1201	30
		90-1296-1201	30
22-1207-1008	25	90-1297-1201	30
22-1227-1008	26	90-1298-1201	30
		90-1299-1201	30
90-1004-1201	30	90-1300-1201	30
90-1005-1201	30	90-1301-1201	30
90-1017-1100	29	90-1302-1201	30
90-1017-1100-14	29	90-1303-1201	30
90-1022-1000	27	90-1304-1201	30
90-1030-1100-14	29	90-1305-1201	30
90-1031-1100	29		
90-1033-1201	30		
90-1034-1201	30		
90-1035-1201	30		
90-1036-1201	30		
90-1037-1201	30		
90-1038-1100-14	29		
90-1051-1100	29		
90-1052-1100	29		
90-1053-1100-14	29		
90-1064-1201	30		
90-1195-1201	30		
90-1196-1201	30		
90-1280-1201	30		
90-1281-1201	30		
90-1282-1201	30		
90-1283-1201	30		



Damar & Hagen Stecksysteme GmbH
Dieselstraße 11
91301 Forchheim

Phone: +49 (0) 91 91 975 89-0
Fax: +49 (0) 91 91 975 89-60
E-Mail: info@damar-hagen.de
www.damar-hagen.de