



ABATEMENT PRODUCT GUIDE

“Your right-now supplier”

888-77-ALLREDI www.allredi-us.com



POLYPRO COVERALL HOOD & BOOTS



Breathable, comfortable, and great for lightweight applications where no danger from liquid contaminants exist.

Navy Blue Suits

30LGSBEPH2X	2XL 25/Case
30LGSBEPH3X	3XL 25/Case
30LGSBEPH4X	4XL 25/Case

White Suits

30SGPPH2X	2XL 25/Case
30SGPPH3X	3XL 25/Case
30SGPPH4X	4XL 25/Case

ALSO AVAILABLE IN A MEDIUM WEIGHT



MICRO-POROUS COVERALL HOOD & BOOTS

Coveralls are lightweight, durable, anti-static and breathable, providing protection from fluids & particles through micro-porous technology

30SG614MP1414LG	LG	25/Case
30SG614MP1414XL	XL	25/Case
30SG614MP14142X	2XL	25/Case
30SG614MP14143X	3XL	25/Case
30SG614MP14144X	4XL	25/Case
30SG614MP14145X	5XL	25/Case

TYVEK

30LGS01414LG	LG	25/Case
30LGS01414XL	XL	25/Case
30LGS014142X	2X	25/Case
30LGS014143X	3X	25/Case
30LGS014144X	4X	25/Case
30LGS014145X	5X	25/Case

OTHER
STYLES
AVAILABLE



TYCHEM QC COVERALL HOOD & BOOTS - SERGED SEAMS

30LGSQC122SXLOH	XL 25/Case
30LGSQC122S2XLOH	2XL 25/Case
30LGSQC122S3XLOH	3XL 25/Case
30LGSQC122S4XLOH	4XL 25/Case



LATEX GLOVES

30IS1064250R10



COTTON CANVAS GLOVES

30IS1032000V



STRING KNIT GLOVES WITH PVC DOTS

30IS1033411LG
30IS1033803LG 1 SIDE
30IS1033853LG 2 SIDES



BLUE LATEX-DIPPED GLOVES

30IS1103891LG



LEATHER DRIVER GLOVE

30SG4064SM
30SG4064MD
30SG4064LG
30SG4064XL
30SG40642X



GREEN NITRILE GLOVES- 15 MIL

30IS1064630LG



SPARTACUS PU PALM GLOVES

30SGSPARTACUSSM
30SGSPARTACUSMD
30SGSPARTACUSLG
30SGSPARTACUSXL
30SGSPARTACUS2X

POLY SHEETING



Item #	Description	Mils	Unit
--------	-------------	------	------

FIRE RETARDANT POLY

10BAPCFR0612	FR 12' x 100'	6	Roll
10PALCFR042055055	FR 20' x 100'	4	Roll
10AECFFR6205	FR 20' x 100'	5	Roll
10PAL55065	FR 20' x 100'	6	Roll

CLEAR POLY

10PALCF0404CSW404C	CL 4' x 100'	4	Roll
10NAPCF408C	CL 8' x 100'	4	Roll
10NAPCF410C	CL 10' x 100'	4	Roll
10POLY0420C	CL 20' x 100'	4	Roll

10PALCF0610C	CL 10' x 100'	6	Roll
10PALCF0612C	CL 12' x 100'	6	Roll
10POLY0620C	CL 20' x 100'	6	Roll

Item #	Description	Mils	Unit
--------	-------------	------	------

BLACK POLY / PAINTERS POLY

10PALCF0420B	BLK 20' x 100'	4	Roll
10NAPCF620B	BLK 20' x 100'	6	Roll
10PAL55062	Painters Poly 9' x 400'	.31	Roll



GLOVE BAGS



Item #	Description	Qty	Pipe Dia.	Unit
10TMP50626	44" x 60" Contin.	25	up to 8"	Roll
10TMP50631	44" x 60" Vert.	25	up to 8"	Case
10TMP50613	54" x 60" Contin.	20	up to 14"	Roll
10TMP50642	60" x 72" Contin.	20	up to 14"	Roll
10TMPTGB035	66" x 84" Singles	10	up to 18"	Case
10TMP50676	72" x 120" Singles	8	up to 30"	Case

ACM BAGS



Item #	Description	Mils	Qty.	Unit
--------	-------------	------	------	------

BLACK ACM BAGS

10TMPBKW046B	30" x 35"	6	100	Roll
10SPIAB3035B021	30" x 35"	2.1	100	Roll
10CHA50112	30" x 38"	3.7	100	Roll
10CHA50102	30" x 38"	3.7	100	Case
10CHA50100	30" x 38"	6	100	Roll
10CHA50103	30" x 38"	6	100	Case
10TMP50118	33" x 48"	3.7	100	Roll
10TMP50104	33" x 48"	3.7	100	Case
10TMPBKW018	33" x 48"	5	75	Case
10CHA50106	33" x 48"	6	75	Roll
10AE50110	33" x 48"	6	75	Case

Item #	Description	Mils	Qty.	Unit
--------	-------------	------	------	------

CLEAR ACM BAGS

10TMPBKW003AB2016	30" x 35"	6	100	Roll
10RODAB2001	30" x 35"	2.1	100	Roll
10CHA50203	30" x 38"	3.7	100	Roll
10NAPAB3040C021	30" x 40"	2.1	100	Roll
10TMPAB3040C6	30" x 40"	6	75	Roll
10TMPBKW017	33" x 48"	3.7	75	Case
10FPC50127	33" x 48"	3.7	100	Case
10FPCAB2021	36" x 60"	6	50	Roll
10CHA50210	38" x 60"	6	50	Roll



Item #	Description	Mils	Qty.	Unit
--------	-------------	------	------	------

CLEAR BAGS

10AE50298	33" x 48"	3.8	75	Roll
10AE50115	33" x 48"	5	75	Roll

BLACK BAGS

10CHA50109	33" x 48"	3.8	75	Roll
10AE50115	33" x 48"	5	75	Roll

WOVEN POLY

10GCBPWB2236	22" x 36"		100	Bale
--------------	-----------	--	-----	------

CAUTION BARRICADE TAPE

- Yellow, 1.5 mil thick & 3" wide
- High-strength, non-toxic, non-flammable
- UV resistant and lead free

1070397 3" x 1000' per roll 12/cs



DANGER TAPE

- Red with Black 3" wide
- High-strength, non-toxic, non-flammable
- UV resistant and lead free

LEAD:

30HI01BT62CG 3" x 1000' per roll 12/cs

ASBESTOS:

30HIBT46AL70311 3" x 1000' per roll 12/cs

DANGER:

1070404 1.5 mil 3" x 1000' per roll 12/cs

1071195 2.0 mil 3" x 1000' per roll 12/cs



"DANGER ASBESTOS" TAPE

30HIBT47CG 3" x 1000' - Tricolored



DUCT TAPE - ASSORTED

10TFS683584 2" x 60 yd. Multi-colored

Sold by the case only 24/cs



DUCT TAPE - TEAL

10CV1126578 2" x 60 yd. Teal

Sold by the case only 24/cs

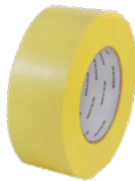


XTREME POLYETHYLENE PE TAPE

10IPC4855YP 2" x 60 yd. Yellow 24/cs

10IPC7255YP 3" x 60 yd. Yellow 16/cs

Sold by the case only



ASBESTOS SIGN

Paper (200/Pack):

30HIAHS5EOSHA - English

30HIAHS5SOSHA - Spanish

Plastic (each):

30ADDAHSPLEOSHA - English

30HIAHSPLSOSHA - Spanish



CLASS 9 LABEL - COMBO

30HIAHD14 500/Roll

OSHA STICKER/DANGER ASBESTOS

30HIAHD04OSHA 500 /Roll



POLYKEN® 105C DOUBLE-SIDED TAPE

- Aggressive, double-faced tape with silicone-coated polyethylene release liner; peels cleanly, minimum residue

10CV1086433 2" x 25 yd. Blue 24/cs



POLYKEN® 757 PE FILM TAPE

- For hanging and patching PE sheeting, securing waste disposal bags

- With Pinked Edges

10CV1335726 Red Vinyl 757 Tape 2" 24/cs

10CV1335727 Red Vinyl 757 Tape 3" 16/cs



NASHUA® CLEANDRAPE TAPE

One side is Duct Tape & one side is Painter's Tape!

- Multi-layer cloth/paper lamination provides the strength of duct tape and clean removal of a painter's tape **SOLD BY THE ROLL**

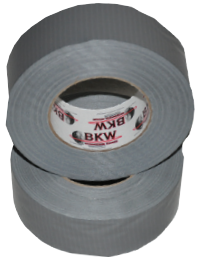
10CV703332 Clean Drape Tape 2" x 20yd 24/cs



DUCT TAPE - GREY

10CV1087683 GP2280 3" Duct Tape 16/cs

10CV1087676 GP2280 2" Duct Tape 24/cs



BLUE PAINTERS' TAPE

10FTX501 2" x 60 yd. Blue 24/cs

10SURBT3180C 3" x 60 yd. Blue 16/cs



XTREME TACK 5000 SPRAY ADHESIVE

- Fast Tack Time and High Bond Strength
- Provides temporary or permanent bond
- Non-chlorinated and non-ozone depleting

10SPCM593201

10PLZC313 (Pasadena Only)

Sold by the Case Only 12/cs



PEEL PLUS CITRUS ADHESIVE REMOVER

10SPCA0035525200 Sold by the Case Only 12/cs



7500 HALF FACE-PIECE RESPIRATOR

- Silicone face seal
- Cool Flow valve reduces heat and moisture
- Dual-mode head harness, easily adjusted for drop-down mode



303M7501 Small
303M7502 Medium
303M7503 Large

P100 7093 PARTICULATE FILTER



303M7093B
2 per pack

P100 7093C NUISANCE LEVEL OV/AG CARTRIDGES



303M7093C
2 per pack

6800 FULL FACE-PIECE RESPIRATOR

- Silicone face seal
- Cool Flow valve reduces heat and moisture
- Directs breath & moisture to reduce fogging
- Low profile design offers a wider field of view

303M6700 Small
303M6800 Medium
303M6900 Large



OV/AG/P100 CARTRIDGE/FILTER



303M60923
2 per pack



by Honeywell

7600 SERIES FULL FACE RESPIRATOR



- NIOSH approved
- Latex free, 100% Silicone zero fillers
- Oral nasal cup reduces fogging and dead air space, limiting re-breathing
- Speech Diaphragm
- Hard coated polycarbonate lens provides over 200° field of vision
- Meets ANSI standards for impact and penetration resistance

30HO760008AS Small
30HO760008A Medium-Large

PARTICULATE FILTER COLOR KEY



ORGANIC VAPOR P100



ACID GAS P100



P100 ORGANIC VAPOR/ACID GAS

Ask about our full selection of respirator cartridges

7700 SERIES HALF FACE RESPIRATOR



- NIOSH approved
- Latex free
- Silicone face piece conforms to face
- Limits re-breathing of exhaled air
- Does not interfere with protective eye wear

30HO770030S Small
30HO770030M Medium
30HO770030L Large

P100 HEPA 7580 PARTICULATE FILTER



99.97% filter efficiency for all particulates
30HO7580P100
2 per pack

P100 7583 OV/AG/P100 CARTRIDGES



30HO7583P100
2 per pack

P100 7581 OV CARTRIDGES



30HO7581P100
2 per pack

DEFENDER™ MULTI-PURPOSE CARTRIDGE & FILTER



30HO75SCP100L
2 per pack

CAP STYLE 4 & 6 POINT SUSPENSION HARD HATS



• Meets ANSI Z89.1-2009 Standards, Type I, Class C, G, & E

30PYHP1611071241
30PYHP1616071253

White - 4 pt Ratchet Suspension
Blue - 6 pt Snap Suspension

V-GARD® PROTECTIVE HATS & CAPS



ANSI Z89.1- 2009, Standards, Type 1 Class E & G

30MSA475358 White - Cap
30MSA475359 Blue - Cap

OTHER COLORS AVAILABLE

SAFETY GLASSES & GOGGLES



INTRUDER
30PYS4110S
30PYS4120S



Clear
Smoke



ZTEK
30PYS2510S74012 Clear
30PYEL20SS2520S Smoke



CLEAR GOGGLES
30PYG204T74003
G204 Vented - Clear
30PYG304T
G201 Perforated - Clear

11' WEB RETRACTABLE LIFELINE



- Ergonomic frame
 - Durable aluminum housing
 - Stainless steel & non-corrosive
 - Quick-action braking system
 - Meets/exceeds OSHA & ANSI standards
- 30GU10900



VELOCITY FULL BODY HARNESS

- Dual Lanyard Keepers
- Finished Webbing Ends
- Webbing 'Wear' Indicator
- 130 - 420 lbs

30GU1703 S/L

EAR PLUGS



REDUCTION
RATING
32db



30RA126FP31 Corded 100/box
30RA126FP30 Non Corded 200/box

SHOCK ABSORBING LANYARD - 8256



- 6' single-leg construction
 - Resistance to UV light & abrasion
 - Double-locking snap hooks
- 30FA8256



LANYARD - 826073



- 6' Double-leg
 - Aluminum alloy snap hook
 - Meets the requirements of OSHA 1926.502 & 1910.66
- 30FA8260732D



CONTRACTOR'S SINGLE BACK D-RING HARNESS



- Single back D-ring
 - 5-point adjustability
 - 9-position tongue buckle leg straps
 - 2 Lanyard Keepers
 - 6,300 lb. heavy-duty polyester webbing
- 30FA7016 S,M,L
30FA7016X2X XL, 2X
30FA70163X 3X



A. DCON SHOWER - 3-ROOM

- All poly constructed units withstand rigors of abatement projects without losing any structural integrity
- All DCon units are made from two layers of 6-mil poly and have triple-flap ingress/egress doorways
- Available in 2 room styles - **FR= Fire Retardant**
 - 10TMP9000W** 37" x 37" x 77" - no poles/shower head
 - 10TMP80022** Same as 9000W AND Fire Retardant
 - 10TMP80001** 37" x 37" x 77" - Pole Assembly Set
 - 10TMPSHWDS180031** Shower Head Assembly
 - 10GINPOLESET81** Grayling DCon XL FR – NYC Compliant Pole Set for XL Decon – 3 sets needed for complete setup



B.



B. ADVANCED CONTAINMENT SYSTEMS PORTABLE SHOWER - HFS

- Disassembled, the ACSI HSF offers the easy mobility and compact appearance of a suitcase on wheels
- One person can move and set up the shower in a few minutes
- Aluminum construction with 31" x 30" x 85" assembled size
 - 10ACHFS2A** ACSI Aluminum Shower
 - 10ACHF22** 2-stage Portable Shower Filter



C.



C. AEROSPACE COLLAPSIBLE DECON SHOWER

- Heavy duty, aluminum collapsible portable shower
- Telescopes to a sturdy full size shower when deployed
- Unit comes with hot and cold water hook-up
- Removable floor drain makes access to the 100 micron drain bag safe and easy
- The fold-down carrying Case handles allow mobility and ease of transport
 - 10AC9105** Collapsible Decon Shower
 - 10SE9115** 2-stage Portable Shower Filter

D.



D. 2-STAGE WATER FILTRATION UNIT

- Enclosed in a heavy-duty aluminum cabinet 0.080 thick
- All electrical components are internally enclosed
- The galvanized plumbing provides long useful life
- The unit comes with GFCI protection from electrical shock
- The low current draw motor is protected from burnout by a vacuum switch
- The HF2 uses 2-3/4" x 9-3/4" filters
 - 10ACHF22** 2-stage Portable Shower Filter
 - 30FRIFIP50R10P** 50 Micron Filter
 - 30FRIFIP20R10P20MICRON** 20 Micron Filter
 - 30FRIFIP5R10P5MICRON** 5 Micron Filter

E.



E. SHOWER ACCESSORIES

- 10BUC26116** Top To Bottom Body Soap
- 10MSP34025** Scrim Towels

ACSI 2000 EC

Negative Pressure Air Scrubber

- 1975cfm High Speed - 1000cfm Low Speed
- Motor: 1-3/4 HP (two-speed switch)
- 37-1/8" L x 26-1/2" W x 31-1/4" H with 12" exhaust

10ACFA2000EC	ACSI 2000 EC
10NC2424PCS	24" x 24" Prefilter Pads, 40/cs
10NCRMI242442	24" x 24" Ring Panel Filter, 24/cs
10NCNCHP242412H910	Replacement HEPA Filter
10FLZC12	12" Wire-Reinforced Flex Duct
10NAPLF100120X500IS3	Layflat tubing 500' roll



ACSI 700

Negative Pressure Air Scrubber

- 700cfm High Speed - 400cfm Low Speed
- Motor: 0.25HP (Variable Speed)
- 33" L x 18" W x 18" H with 10" exhaust

10ACFA700	ACSI 700
10NC1717P	17" x 17" Prefilter Pads, 30/cs
10NC1313R	13" x 13" Ring Panel Filter, 24/cs
10NCN1212115HC	Replacement HEPA Filter
10FLZC10	10" Wire-Reinforced Flex Duct
10NAPLF100120X500IS3	Layflat tubing 500' roll



AEROCLEAN 2000

"ECONO" The Original Air Scrubber

- 1950cfm High Speed - 1300cfm Low Speed
- Motor: 1.0 H.P. (two-speed switch)
- 33" L x 26" W x 26" H with 12" exhaust

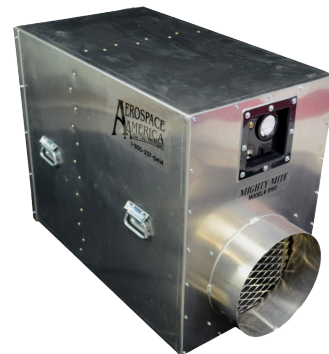
10SE9143	Aeroclean 2000
10NC2424PCS	24" x 24" Prefilter Pads, 40/cs
10NCRMI242442	24" x 24" Ring Panel Filter, 24/cs
10NCNCHP242412S910	Replacement HEPA Filter
10FLZC12	12" Wire-Reinforced Flex Duct
10CHALF100215051	Layflat tubing 500' roll



AEROCLEAN 1800

- 1850cfm High Speed - 1200cfm Low Speed

10SE9180	Aeroclean 1800
10NCWEC1624	16" x 24" Prefilter Pad, 40/cs
10NCRMI1642	16" x 24" Ring Panel Filter, 24/cs
10NCCF162412HP	Replacement HEPA filter
10FLZC12	12" Wire-Reinforced Flex Duct
10CHALF100215051	Layflat Tubing 500' Roll



AEROCLEAN 600 MAG

- 675cfm High Speed - 450cfm Low Speed

10AC914507	Aeroclean 600 MAG
10NC1616P	16" x 16" Prefilter Pad 40/cs
10NC1616R	16" x 16" Ring Panel Filter 24/cs
10NCCF161612HP	Replacement HEPA filter
10FLZC12	12 Wire-Reinforced Flex Duct
10CHALF100215051	Layflat Tubing 500' Roll



OMNIGUARD 5™ NEGATIVE PRESSURE RECORDER

- Real time monitoring of diff. pressure and/or vacuum level
- Programmable high and low alarm set points
- 95 decibel audible alarm
- Displays in Inches WC, Millimeters WC or Pascals
- Built in cell modem - allows automatic visibility on job sites

10ESIOMNIGUARD460009
10ESIOMNIPAPER60012

Omniguard™ 5
Thermal Paper

ENGINEERING SOLUTIONS INC



ATRIX OMEGA PLUS H13 HEPA VACUUM (GLOVEBAG VAC)

- 99cfm - 628W - 120V - 73db
- 1,000 hour rated Ametek® Advantek II motor
- 10' detachable power cord
- 1 gallon HEPA filter - 99.397% efficient at .3 micron
- Includes hose and filter plugs

10ATXVACOMEGA
10ATXOF612HE

Utility Vacuum
Utility Vacuum Filter

ATRIX

CT-5 ENVIROMASTER® HEPA VAC

- 5 gal. 1.3hp HEPA dry vacuum with Turbo Nozzle & tool kit

10MA25791595000
10MA0289SB
10MA44155495004

CT-5 HEPA Vac
5/pk Replacement Bags
Replacement HEPA 14"



MASTERCRAFT 15 GALLON WET/DRY VAC

- 15 gal. 2hp wet/dry vacuum with hose

10MA24317595020
10CVA0289M3

15 gal. wet/dry Vac
Replacement HEPA 16"

Mastercraft



EUROCLEAN GD 930

- 4-gal HEPA Vac with HEPA filter, motor filter, 1 bag, 6 ft hose, telescopic wand, crevice tool, combo floor nozzle, and combo brush/small nozzle

10SEGD930HSP
10ERB600900
10APCGD930FILTER

GD930 Vac
5/pk Replacement Bags
Replacement HEPA

KENT Euroclean



ALLREDI XTREME WHITE OR CLEAR ENCAPSULANT



This is a post-removal lock-down encapsulant solution designed to dry quickly.

X-TREME WHITE is premixed and requires no dilution.

10SEN40001 Xtreme White 5 gal
10SENSEN811CLE05 Xtreme Clear 5 gal

FIBERSET PM



Pre-mixed "lock-down" sealing treatment for microscopic residual fibers present after the removal of ACM. Ready-to-use, Class "I" fire-rated coating that provides a flexible barrier to ensure final air clearance. UL® classified for use as a primer for fireproofing replacement materials.

30FI7470 Fiberset PM White 5 gal

LBC - LEAD BARRIER COMPOUND



A thermoplastic-elastomeric water based copolymer. Complies with all EPA and HUD requirements for lead-based paint encapsulants and is recognized as a permanent method for abatement of lead-based paint.

20ICP5801 5 gal

FOSTER® 40-80 FIRST DEFENSE® DISINFECTANT



40-80 First Defense is recommended for use on hard non-porous surfaces. Effective against norovirus & human coronavirus. Ready-to-use
 EPA List N wet contact time is 3 minutes

10GRR3640230005 5 gal



AFTERSHOCK

Kills residual mold and mildew that remains after pre-cleaning and disinfecting. Ideal for use on interior wall surfaces.

30FI83905 5 gal bucket

FOSTER 40-25® FULL DEFENSE™



Fungicidal Protective Coating for residential, commercial and industrial mold remediation projects, un-finished wood, drywall, oriented strand board, metal, masonry.

- Coverage: 300 sq ft/gal
- EPA-registered
- Easy application by airless sprayer or brush
- 10-year warranty

20HBF4025 40-25 5 gal
20HBF4050 40-50 5 gal

24-7 CLEAR MOLD & MILDEW RESISTANT COATING



- Can be used on multiple surfaces - previously painted surfaces, wood, concrete, drywall, plaster, brick and most metals. 24-7 is self-priming.
- 24-7 Clear goes on milky white and dries clear.

10SENSEN247C05 Clear 5 gal

IAQ 6000/IAQ 6100



IAQ 6000 is recommended for use on plaster, wallboard, sheet rock, concrete, masonry block, wood, primed metal and galvanized metal.

Coverage:

Smooth: 250-400 ft²/gal
 Porous: 150-300 ft²/gal

20ICP83605 White 5 gal
20ICP83615 Clear 5 gal

SHOCKWAVE DISINFECTANT/SANITIZER



EPA-registered disinfectant, sanitizer and cleaner. Ideal for flooding and mold remediation. Used for treating wood framing, carpets and other porous and non-porous surfaces.

20ICP8310 Concentrate
20ICPRTU8316GALLON RTU 1 gal
20ICPRTU8316PAIL RTU 5 gal

ALLREDI LOW ODOR MASTIC REMOVER

- A low odor, economically priced mastic remover for removing black mastic, cutback and spray adhesives on asbestos abatement jobs.
- This product does not contain asbestos.
- 5 gallon pail

10SEN35106HP



ALLREDI
Formerly BKW

ALLREDI NO ODOR MASTIC REMOVER

- No odor, economically priced mastic remover for removing black mastic, cutback and spray adhesives on asbestos abatement jobs
- 5 gallon pail

10SEN35102HF



909 SOY-BASED MASTIC REMOVER

- Biodegradable, soy-based solvent cleaner created for the removal of asphalt-based mastics, adhesives, lubricants, inks and other petroleum-based residues
- 5 gallon pail

10SENSEN9095



626 CARPET & SHEET VINYL ADHESIVE REMOVER

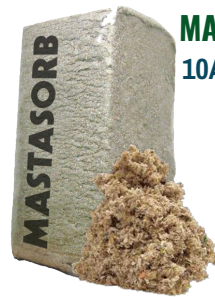
- Use 626 to remove tan or beige colored glues, linoleum backing and vinyl sheet goods adhesives.
- 626 cleans up with water, is non-hazardous, and requires no dilution
- 5 gallon pail

10SENSEN6265



ALLREDI COLORED FLEECE RAGS

10AFFRAGCF50 50 lb. Box

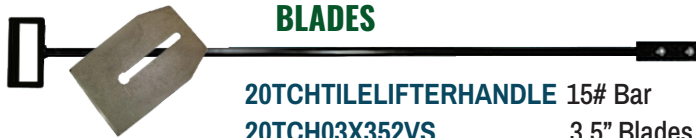


MASTASORB

10APPMASTASORB 27 lb / bag

HANDLE TILE SCRAPER & BLADES

20TCHTILELIFTERHANDLE 15# Bar
20TCH03X352VS 3.5" Blades
10AMNTB6SS 6" Blades



36" WRECKING BAR
10HDW156075

3" ORANGE SPUD BAR / BLADE

20TTI4030000 3" Spud Bar
20TCHTB40301 3" Blade



7" RED SPUD BAR / BLADE

10TTI407 7" Spud Bar
10TTI3070100 7" Blade

15" NAIL PRY BAR - WONDER BAR

10HDW7565



4" HEAVY DUTY HAND SCRAPER

10UBL11324

4" HEAVY DUTY SCRAPER BLADES

10UBL11325 100/box





COTTON MOP HEAD #24
20GF2053315



MOP HANDLE
20GF2177216

MOP BUCKET WRINGER

10NI1033367 26 quart



PUSH BROOMS



- Hardwood blocks
- Tampico fibers resist chemicals

20GF2418H 18" Stiff 4" Trim
10NI1024M60 24" Soft Tampico
10NI75219 24" Soft
20GF3360102 24" Heavy Duty 4" Trim

DUST PANS - METAL OR PLASTIC



- METAL - one-piece form with Baked-on black enamel finish.
- 20 gauge steel 2" W x 14" H.
- PLASTIC - Tough, flexible black plastic 4" x 12-1/4" x 12"

20GF9000101 12" Metal Dust Pan
10NI51150763 12" Plastic Dust Pan

PALMYRA STREET SWEEP - 16"



- Natural palmyra bristles perfect for wet/dry applications
- Hardwood block, 6-1/4" trim

20GF3360109 18" Palmyra Street Sweep

PROFESSIONAL CHOICE BROOM HANDLES



- Metal threaded wooden handle - 15/16 x 60"
- Domed, lacquered & tapered - 1-1/8" x 60"

10NIM602 60" Metal Tip
20GF4061201 60" Tapered End

CARLISLE FLO-PAC® COUNTER BRUSH



- 8" and 9" counter brushes
- Plastic block
- 2-1/2" trim

20GF3580101 Counter Brush - Fox Tail

FLOOR SQUEEGEES

A. & E.



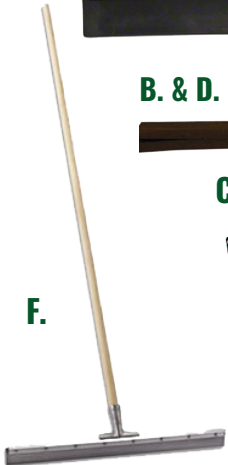
B. & D.



C.



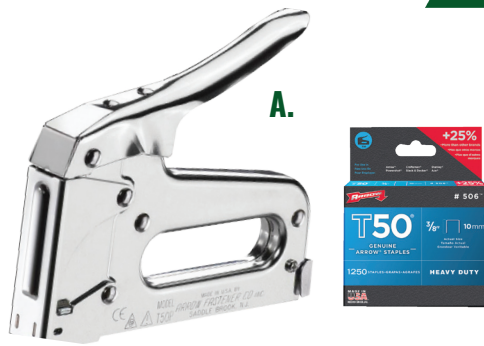
F.



G.

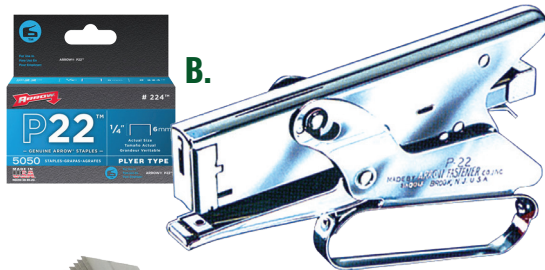


Item #	Description
A. 10NI31001118	18" Rubber Squeegee
B. 20GF861	18" Foam Squeegee
C. 20GF4118	18" Foam Squeegee
D. 20GF4270119	22" Foam Squeegee
E. 10NI31001124	24" Rubber Squeegee
F. 20GF4190102	24" Squeegee with Handle
G. 10NI31001124	60" Pine Tapered Handle



A. T50 STAPLER AND REPLACEMENT STAPLES

Item #	Description	
10ORS091T50	T50 Stapler	
10HDW16549	3/8" Staples	1250/pk
10ARR50524	5/16" Staples	1250/pk



B. P22 STAPLER AND REPLACEMENT STAPLES

Item #	Description	
10ARROW-P22	P22 Plier Stapler	
10ARR22475612	1/4" Staples	5,000/pk



C. UTILITY KNIFE & REPLACEMENT BLADES

Item #	Description	
10UBL11795B	Metal Utility Knife - Standard	
1070698	Replacement Blades - 100/pk	
10IDL75630	Snap-Off Utility Knife - Orange	



D. SCRAPERS

Item #	Description	
10TEG80252	4" Razor Blade - 10/Tube	
10UBL11325	4" Razor Blade - 100/Box	
10UBL13009	8" Razor Blade - 10/Tube	



E. 3" BENT SCRAPER & 1-1/2" PUTTY KNIFE

Item #	Description	
10ATIBS3	3" Bent Scraper - Heavy Duty	
10ATILS3	3" Scraper - 12" handle	
10ATIDSXG1	5-1 Painter Scraper - Heavy Duty	
10ATIDSX112	1-1/2" Putty Knife - Heavy Duty	



F. HAMMERS & HATCHETS

Item #	Description	
10HBC96717	16oz RIP Hammer - F/G Handle	
10HBC111213	3lb Drill Hammer - 10" F/G Handle	
10HDW05808	8lb Sledge Hammer - F/G Handle	
10BIHATWH35	3.5lb Hatchet - Hickory Handle	



G. POLY GRAIN SCOOP

Item #	Description	
10HDW656602	#12 Plastic Grain Scoop Shovel	



PHOENIX - DRYMAX BLE & XL

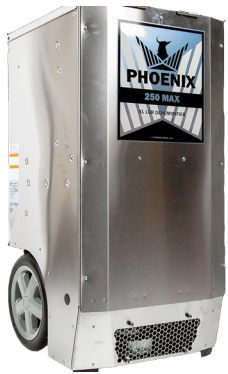
- Removes up to 80 pints of moisture per day at only 5.7 amps
- Quickly moves damp air up to 170cfm to allow for faster drying
- Bluetooth enabled with data logging capabilities
- 12" W x 17.5" H x 21" D

4038500

DryMAX BLE

4038558

DryMAX XL



PHOENIX - 250 MAX LGR (LOW GRAIN REFRIGERANT)

- Removes up to 145 pints of moisture per hour in AHAM conditions - only 8.2 amps
- Low-grain, high-temperature performance
- 20" W x 33.5" H x 20" D

4030010

250 MAX LGR

Other brands
& models
available

PHOENIX - AIRMAX RADIAL AIR MOVER

- Airflow of 925cfm for fast & efficient industrial drying
- Draws 1.9 amps allowing up to 6 units on a single circuit
 - 8.875" H x 20.5" D

10THS4035060

AirMax Radial Air Mover





- 360° lighting adjustable to 180° with optional reflector

- No set-up — plugs into 120VAC supply

10LAWWBLWL175MH 175W 36"H 25' - 45' range

10PPL111104 400W 36"H 50' - 110' range

REPLACEMENT PARTS AVAILABLE



HALOGEN QUARTZ PORTABLE LIGHT & WITH TRIPOD

- Telescoping tripod will extend up to 7 ft.

10CCLL14SLED 2 Light with Tripod

- Quartz light with 500 watt bulb.

10CCL46005N



HEAVY DUTY STRING-O-LIGHTS - 600V

- 10' Spacing

10CCL7538SW 50'

10CCL45010 100'



EXTENSION CORDS & TRI-TAPS



10CCL2590

10CCL2590

10CCL148800236



50'

100'

Tri-Tap

REPLACEMENT BULBS

10FEC60ACLVS2130 75W

HALOGEN

10FEC76065 500W



AIRLESS SPRAY EQUIPMENT

BLASTING EQUIPMENT

DECON TRAILERS

DUST COLLECTORS

FALL PROTECTION

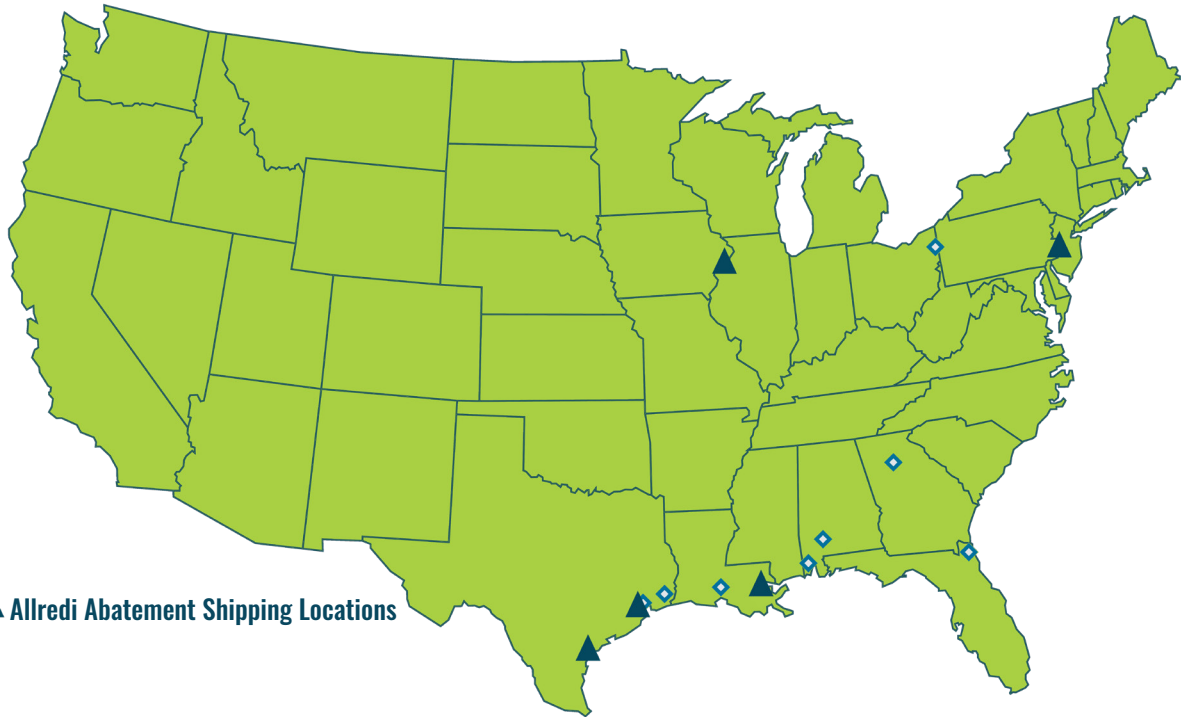
INSPECTION TOOLS

MOISTURE MANAGEMENT EQUIPMENT

PERSONAL PROTECTION EQUIPMENT

SAFETY PRODUCTS

VACUUMS



▲ Allredi Abatement Shipping Locations

ALABAMA

5445 Business Parkway
Theodore, AL 36582
251-338-7525

FLORIDA

7002 Davis Creek Road
Jacksonville, FL 32219
800-535-4564

GEORGIA

2221 Northmont Parkway
Duluth, GA 30096
800-535-4564

IOWA

1036 South Dittmer Street
Davenport, IA 52802
563-324-2519

OHIO

1208 Ameritech Blvd
Youngstown, OH 44509
330-448-6267

PENNSYLVANIA

2100 Frost Road
Bristol, PA 19007
215-826-8080

LOUISIANA

1997 Grand Caillou Road
Houma, LA 70363
985-580-4273

350 Grefer Lane
Harvey, LA 70363
504-367-8090

10387 Airline Hwy.
Gonzales, LA 70507
225-647-7575

117 Zonolite Street
Lafayette, LA 70508
337-267-1440

TEXAS

3009 Pasadena Freeway
Suite #100
Pasadena, TX 77536
844-361-7038

4920 Ward Dr
Beaumont, TX 77705
409-722-1284

5626 Park PID Road
Corpus Christi, TX 78406
361-887-2038

“Your right-now supplier”

888-77-ALLREDI www.allredi-us.com