



16

Asian Art in London  
3 - 12 November 2016

Registered Office  
Asian Art in London  
180 Piccadilly  
London W1J 9HF

+44 (0)20 7830 9788  
info@asianartinlondon.com  
www.asianartinlondon.com

The contents of this guide are believed to be correct at the time of printing. Nevertheless, the authors, publishers and Directors of Asian Art in London shall not be liable for loss or harm of any kind which may arise or result from any errors, inaccuracies or omissions.

## Contents

### Events

- 3 Introduction
- 4 Open Evenings
- 5 Champagne Reception
- 7 Symposium
- 8 Art Tours

### 9 Calendar of Events

### Related Events

- 22 In London
- 24 Outside London

### Participants

- 28 Participant Specialities
- 30 Dealers
- 54 Auction Houses
- 62 Auction Dates
- 64 App

### Asian Collections, Societies, etc

- 66 Asian Collections
- 68 Asian Societies and Cultural Centres
- 70 Other Asian Collections

### Art Services

- 72 Conservator, Recruitment & Designer

### 74 Sponsors, Partners and Advertising

### 106 Maps



**Asian Art in London** is an annual event which unites leading Asian art dealers, major auction houses and societies in a series of gallery selling exhibitions, auctions, receptions, lectures and seminars. These are complemented by exhibitions at the leading museums.

Asian Art in London 是一個會集了知名的亞洲藝術經濟商、主要拍賣行及學會的年度盛會。主要活動包涵一系列的銷售展、拍賣、招待會、講座及研討會。各大博物館同時舉辦相關展覽。

Further information on gallery openings, receptions and exhibitions is available from individual participants.

**Asian Art in London**

+44 (0)20 7830 9788

info@asianartinlondon.com

www.asianartinlondon.com

Free app at [asianartinlondon.com](http://asianartinlondon.com) (see page 64)

## Open Evenings

The participating galleries and auction houses invite you to a series of evening receptions being held throughout London. Most dealers will be open each day during **Asian Art in London**, including Saturday 5th, Sunday 6th and Saturday 12th November. To avoid disappointment please check individual entries.

### KENSINGTON CHURCH STREET

Saturday 5th November 17.00 - 21.00

### ST JAMES'S

Sunday 6th November 17.00 - 21.00

### MAYFAIR

Monday 7th November 17.00 - 21.00

## Champagne Reception

To celebrate the nineteenth year of **Asian Art in London**, a champagne reception will be held at the China Exchange in London's Soho. Partnered by Laurent Perrier Champagne and Mosimann's London.

We hope you will join the participants of **Asian Art in London**, directors and curators from museums worldwide, academic specialists, visitors and collectors to celebrate this year's event.

### DATE

Thursday, 3rd November 18.30-21.00  
Champagne, canapés & entertainment

### VENUE

China Exchange  
32A Gerrard Street, Soho  
London W1D 6JA

### PRICE

Tickets: £40 incl. VAT

Please note:  
Admission by pre-booked ticket only  
To purchase a ticket, please contact:  
Asian Art in London  
+44 (0)20 7830 9788  
info@asianartinlondon.com



## Symposium

### **'The Science of Art'**

#### **Lecturers:**

Stephan Loewentheil, expert & collector

Carlos Bayod, Factum Arte, Madrid

Riccardo Montanari, expert & scientific researcher

#### **Guest Speaker:**

Dan Cruickshank, TV presenter, historian & author

Includes Private View of *'Life in Qing Dynasty Shanghai: The Photographs of William Saunders'*

#### **DATE**

Wednesday 9th November  
18.00-20.30 (registration 17.30)

#### **VENUE**

China Exchange  
32A Gerrard Street, Soho  
London W1D 6JA  
(See map page 109)

#### **PRICE**

Tickets: £30 incl. VAT  
(light refreshments)

Please note:  
Admission by pre-booked ticket only  
Tickets available online at:  
[www.asianartinlondon.com/content/asian-art-london-symposium-2016](http://www.asianartinlondon.com/content/asian-art-london-symposium-2016)

## Art Tours

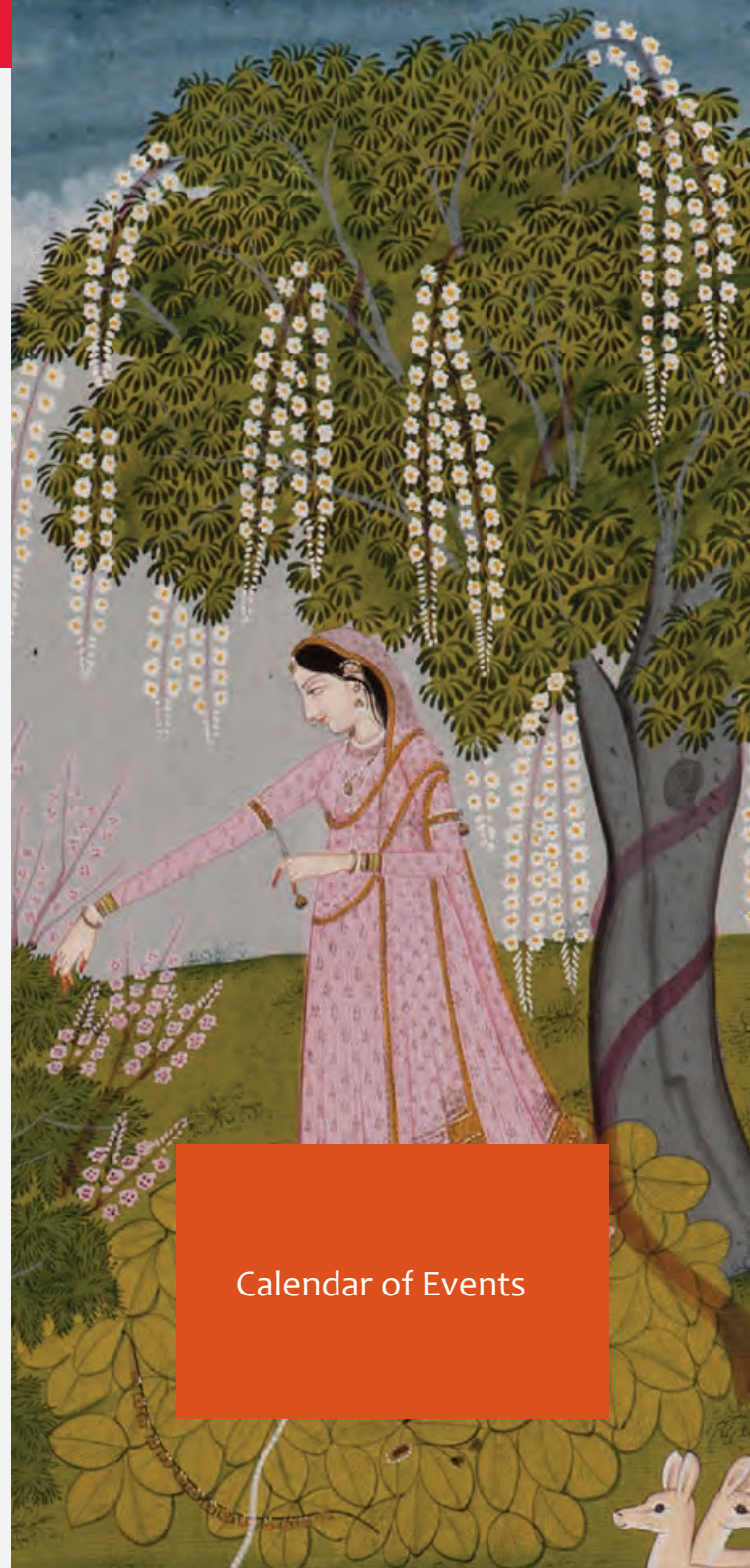
**Asian Art in London** arranges tours to the participating galleries to show the variety of Asian art that can be seen, enjoyed and purchased in London.

The tours can be tailored to meet the individual needs of a group and **Asian Art in London** can also organise tours for museum patron groups, academic bodies and specialist clubs and societies.

Please note:  
Tours must be arranged in advance and by 3rd October 2016.

For further information, or to discuss a tour, please contact:

**Asian Art in London**  
+44 (0)20 7830 9788  
info@asianartinlondon.com  
www.asianartinlondon.com



Calendar of Events

## Thursday 3rd November

### ASIAN ART IN LONDON CHAMPAGNE RECEPTION

**Champagne Reception** 18.30-21.00

China Exchange, 32A Gerrard Street, Soho, London W1D 6JA

- £ Admission by pre-booked ticket only from Asian Art in London Tickets £40 (incl. VAT)
- i info@asianartinlondon.com | +44 (0)20 7830 9788  
www.asianartinlondon.com

### EXHIBITION

#### Vision and Revision: The Art of Chinese Woodblock Prints

In collaboration with the Muban Educational Trust

- £ Admission free
- 🕒 09.00-18.00 (exhibition continues to 11 Nov)
- @ Asia House, 63 New Cavendish Street, London W1G 7LP
- i +44 (0)20 7307 5454 | enquiries@asiahouse.co.uk

### EXHIBITION

#### China without Dragons: Rare Pieces from Oriental Ceramic Society Members

Organised by The Oriental Ceramic Society  
in collaboration with Sotheby's London

- £ Admission free
- 🕒 Daily until 9 Nov
- @ Sotheby's, 34-35 New Bond Street (see map page 110)
- i Mary Painter: ocs.london@btinternet.com

### LECTURE

#### Early Indian Sculpture and its International Legacy

by Arthur Millner

- £ Admission free with valid ticket to the Fair
- 🕒 12.30
- @ Winter Art & Antiques Fair Olympia, London W14 8UX
- i www.olympia-antiques.com/events

## Friday 4th November

### LECTURE

#### Shadow Puppet Theatre from Indonesia, Malaysia and Thailand: A Curator's Introduction

by Alexandra Green

- £ Admission free, booking essential
- 🕒 13.30-14.30
- @ British Museum, BP Lecture Theatre, (see page 66)
- i www.britishmuseum.org/events

### FILM SCREENING

#### Mr Sea

by artist Xue Geng, a porcelain film adapted from *Strange Stories from a Chinese studio* (Liao Zhai Zhi Yi). Original novel by Pu Song Ling (1640-1715) a Ghost writer of Qing Dynasty.

- £ Admission free
- 🕒 Opening times: www.chinaexchange.uk (continues to 13 Nov)
- @ China Exchange, 32A Gerrard Street (see map page 109)
- i +44 (0)20 7734 1931 | info@chinaexchange.uk

### LECTURE

#### Dreams, Dice and Divination: Islamic Art and the Supernatural

by Dr Francesca Leoni

- £ Admission free, with valid ticket to the Fair
- 🕒 14.30
- @ Winter Art & Antiques Fair Olympia, London W14 8UX
- i www.olympia-antiques.com/events

### LECTURE & GALLERY TALK

#### Preservation of Culture: Custodianship of 19th century Photography

by Stephan Loewentheil, Phillip Prodger, Terry Bennett and Richard Fattorini

As part of the historical photography exhibition '*Life in Qing Dynasty Shanghai: The Photographs of William Saunders*'.

- £ Admission free
- 🕒 18.00
- @ China Exchange, 32A Gerrard Street (see map page 109)
- i +44 (0)20 7734 1931 | info@chinaexchange.uk

## GALLERY TALK

**Bridging Cultures: A Japanese Artist in Vietnam**

by Saeko Ando; introduction by Julia Hutt  
As part of Simon Pilling's exhibition the lacquer artist examines the influence of Vietnamese lacquerwork on her unique artworks over a 20 year career.

- £ Admission free, places limited, booking essential
- 🕒 18.15-19.30
- @ Gallery 8, 8 Duke Street, St James's (see map page 109)
- i +44 (0)7946 577 303 | simon@simonpilling.co.uk

## BOOK LAUNCH

**Bringing Heaven to Earth: Silver Jewellery and Ornament in the Late Qing Dynasty**

by Elizabeth Herridge

- £ Admission free, places limited, booking essential
- 🕒 18.30-20.30
- @ The London Library, 14 St James's Square, London SW1Y 4LG
- i rsvp@londonlibrary.co.uk | www.londonlibrary.co.uk

## PERFORMANCE

**Arjuna's Meditation: A Play for Shadow Theatre**

A special performance about one of the great heroes of *The Mahabharata* featuring shadow puppets and live *gamelan* music from West Java.

- £ £5, concessions/members £3
- 🕒 18.30-20.30
- @ British Museum, BP Lecture Theatre (see page 66)
- i www.britishmuseum.org/events

## LECTURE &amp; RECEPTION

**Beyond the Rocks: Asia and Contemporary Jewellery**

by Miranda Rhys Williams  
An exploration of how traditional Asian arts, practices and materials have influenced contemporary jewellery design, focusing on a selection of contemporary makers.  
Organisation: Bagri Foundation

- £ £10
- 🕒 18.30-20.00
- @ Asia House, 63 New Cavendish Street, London W1G 7LP
- i +44 (0)20 7280 0000 | events@bagrifoundation.org

## Saturday 5th November

## LATE NIGHT OPENING IN KENSINGTON CHURCH STREET

**Receptions will be held at:** 17.00-21.00  
(Galleries also open throughout the day)

Gregg Baker Asian Art | Marchant | Jorge Welsh Works of Art

## GALLERY TALK

**Bridging Cultures: A Japanese Artist in Vietnam**

by Saeko Ando  
As part of Simon Pilling's exhibition the lacquer artist examines the influence of Vietnamese lacquerwork on her unique artworks over a 20 year career.

- £ Admission free, places limited, booking essential
- 🕒 16.30-17.45
- @ Gallery 8, 8 Duke Street, St James's (see map page 109)
- i +44 (0)7946 577 303 | simon@simonpilling.co.uk

## Sunday 6th November

## LATE NIGHT OPENING IN ST. JAMES'S

**Receptions will be held at:** 17.00-21.00  
(Galleries also open throughout the day)

Aktis Gallery | Rosemary Bandini | Joost van den Bergh | Brandt Asian Art | Cohen & Cohen | Rob Dean Art | Peter Finer | MD Flacks | Genrokuart | Grosvenor Gallery | Hanga Ten | Ben Janssens Oriental Art | Littleton & Hennessy | Mika Gallery & Shouun Oriental Art | Simon Pilling | Priestley & Ferraro | Simon Ray | Röell Fine Art | Jacqueline Simcox Ltd | Runjeet Singh | Jonathan Tucker Antonia Tozer Asian Art | YEWN, the Heritage Jeweller

## LECTURE

**Remembering Lancelot Ribeiro and other Indian artists in 1960s Britain**

by Nicholas Treadwell

- £ Admission free, booking essential
- 🕒 15.00-16.15
- @ British Museum, BP Lecture Theatre (see page 66)
- i www.britishmuseum.org/events



## Monday 7th November

### LATE NIGHT OPENING IN MAYFAIR & MARYLEBONE

**Receptions will be held at:** **17.00-21.00**  
(Galleries also open throughout the day)

David Baker Oriental Art | Berwald Oriental Art | Bonhams | Brun Fine Art | Prahlad Bubbar | Eskenazi Ltd | Sam Fogg | Francesca Galloway | Jhaveri Contemporary | Lyon & Turnbull | Mayor Gallery | Sydney L. Moss | Nagel Auktionen | Nicholas Pitcher Oriental Art | Rossi & Rossi | Sotheby's | Woolley & Wallis

### AUCTION

#### Asian Art

🕒 10.30  
@ Bonhams Knightsbridge (see page 55)

### OPEN DISCUSSION

#### Forecasting the Future: The Next Generation An Open Discussion with Lyon & Turnbull and Antiques Trade Gazette

£ Admission free, places limited, booking essential  
🕒 14.00  
@ Asia House, 63 New Cavendish Street (see map page 112)  
i rsvp: londonevents@lyonandturnbull.com

### LECTURE

#### The Annual Bonhams OCS Lecture Bond Street Blues: The Victorian Passion for “Nankin”

by Colin Sheaf  
Organisation: The Oriental Ceramic Society

£ Admission free, booking essential: Dr Edward Luper  
+44 (0)20 7468 5887 or edward.luper@bonhams.com  
🕒 18.00, drinks 17.30  
@ Bonhams, 101 New Bond Street (see map page 110)  
i Mary Painter +44 (0)1223 881 328 | ocs.london@btinternet.com

### RECEPTION & BOOK LAUNCH

#### Chinese Ivory Carving, The Sir Victor Sassoon Collection

by Rose Kerr

£ Admission free, places limited, booking essential  
🕒 18.30 for 19.00  
@ Sotheby's (see page 110)  
i +44 (0)20 7293 6442 | adam.webb@sothebys.com

### GALLERY TALK

#### Master of Mezzotint

by Katsunori Hamanishi  
As part of Hanga Ten's solo exhibition of Japanese mezzotint artist Katsunori Hamanishi, the artist demonstrates his print technique and how he has adopted this centuries-old methodology to his own unique style.

£ Admission free, places limited, booking essential  
🕒 18.30-19.30  
@ Hanga Ten, Gallery 8, 8 Duke Street (see map page 109)  
i +44 (0)7788 458 201 | japaneseprints@hangaten.com

## Tuesday 8th November

### AUCTION

#### Fine Chinese Ceramics and Works of Art

🕒 10.30 & 14.00  
@ Christie's King Street (see map page 56)

### AUCTION

#### The Julius and Arlette Katchen Collection of Fine Netsuke: Part I

🕒 14.00  
@ Bonhams (see page 54)

### AUCTION

#### Fine Asian Works of Art

🕒 17.00  
@ Lyon & Turnbull at Asia House, 63 New Cavendish Street (see map page 58)

### GALLERY TALK

#### Korean Holiday Festivities

by Eleanor Soo-ah Hyun

£ Admission free  
🕒 13.15-14.00  
@ British Museum, Room 67 (see page 66)  
i +44 (0)20 7323 8299 | www.britishmuseum.org

### DISPLAY OPENING

#### The Creative Genius of Kondaya Genbei X

A display of obi and a kimono length of beni-dyed koishimaru silk newly donated to the V & A.

£ Admission free  
🕒 Daily from 8 Nov, 10.00-17.45 (Fri 10.00-22.00)  
@ V&A, Toshiba Gallery of Japanese Art (see page 66)  
i +44 (0)20 7942 2322/2244 | asia.enquiries@vam.ac.uk

## LECTURE

**Diplomatic Gifts from the Kangxi Emperor to Peter the Great**

by Dr Maria Menshikova  
 Organisation: The Oriental Ceramics Society  
 sponsored by Bonhams

- £ Admission free, booking essential; priority to OCS members
- 🕒 18.15, drinks 17.45
- @ The Society of Antiquaries, Burlington House (see page 68)
- i Mary Painter +44 (0)1223 881 328 | ocs.london@btinternet.com

## LECTURE

**New Research into Painted Enamels**

by Dr Tatiana Arapova  
 Organisation: The Oriental Ceramics Society  
 sponsored by Bonhams

- £ Admission free, booking essential; priority to OCS members
- 🕒 18.15, drinks 17.45
- @ The Society of Antiquaries, Burlington House (see page 68)
- i Mary Painter +44 (0)1223 881 328 | ocs.london@btinternet.com

## GALLERY TALK

**Master of Mezzotint**

by Katsunori Hamanishi  
 As part of Hanga Ten's solo exhibition of Japanese mezzotint artist Katsunori Hamanishi, the artist demonstrates his print technique and how he has adopted this centuries-old methodology to his own unique style.

- £ Admission free, places limited, booking essential
- 🕒 18.30-19.30
- @ Hanga Ten, Gallery 8, 8 Duke Street (see map page 109)
- i +44 (0)7788 458 201 | japaneseprints@hangaten.com

## Wednesday 9th November

## ASIAN ART IN LONDON SYMPOSIUM

**'The Science of Art'**

18.00-20.30

China Exchange, 32A Gerrard Street, Soho, London W1D 6JA

Includes Private View of 'Life in Qing Dynasty Shanghai: The Photographs of William Saunders'  
 Admission by pre-booked ticket only (registration 17.30)  
 Tickets £30 (incl. VAT) available online at [www.asianartinlondon.com/content/asian-art-london-symposium-2016](http://www.asianartinlondon.com/content/asian-art-london-symposium-2016)

## AUCTION

**Important Chinese Art**

- 🕒 10.00 & 14.00
- @ Sotheby's (see page 60)

## AUCTION

**Chinese Ceramics, Works of Art and Textiles**

- 🕒 10.00 & 14.00
- @ Christie's South Kensington (see page 57)

## GALLERY TALK

**The World of Southeast Asian Shadow Theatre**

by Alexandra Green

- £ Admission free
- 🕒 13.15-14.00
- @ British Museum, Room 91 (see page 66)
- i +44 (0)20 7323 8299 | [www.britishmuseum.org](http://www.britishmuseum.org)

## LECTURE

**Toshiba Lectures in Japanese Art and Science  
 Botanic Japan: Visualising Science  
 Botany and Scientific Illustration**

by Masumi Yamanaka and Dr Nicholas Hind  
 Organisation: The Sainsbury Institute for the Study of Japanese Arts and Cultures

- £ Admission free, places limited
- 🕒 19.00
- @ The Royal Botanic Gardens, Kew, Cambridge Cottage  
 37 Kew Green, Richmond TW9 3AB
- i +44 (0)1603 597 507 | [sisjac@sainsbury-institute.org](mailto:sisjac@sainsbury-institute.org)

## Thursday 10th November

### AUCTION

#### Fine Chinese Art

- ⌚ 10.30
- @ Bonhams (see page 54)

### AUCTION

#### Fine Japanese Art

- ⌚ 13.00
- @ Bonhams (see page 54)

### TWO DAY SHORT COURSE

#### Classical Indian Paintings

by Jasleen Kandhari  
 Organisation: Christie's Education  
 Includes private visits to galleries, V&A museum, behind the scenes at Christie's and lecture on insights into Sikh paintings.

- £ £320
- ⌚ 10th-11th November, 10.00-17.00
- @ Christie's, 8 King Street (see page 109)
- i +44 (0)20 7665 4350 | london@christies.com

### GALLERY TALK

#### Chinese Buddhist Objects in the Victoria & Albert Museum Collections

by Malcolm McNeill  
 Introduces the diverse Buddhist materials in the V&A Chinese collections, from sculpture and textiles to painting and ceramics.

- £ Admission free
- ⌚ 13.00
- @ V&A, Cromwell Road (see page 66)
- i +44 (0)20 7942 2000 | www.vam.ac.uk/whatson

### FILM SCREENING

#### London Korean Film Festival 2016 Screening

- £ Booking essential
- ⌚ 13.30
- @ British Museum, Stevenson Lecture Theatre (see page 66)
- i +44 (0)20 7323 8299 | www.britishmuseum.org/ www.koreanfilm.co.uk

### LECTURE & RECEPTION

#### East Asian Art: Understanding the Market

Highlights selected Asian contemporary artists and offers insight into the current art market.

- £ £50 (£40 if registered by 20th October)
- ⌚ 18.00-19.45
- @ Sotheby's Institute of Art, 30 Bedford Square London WC1B 3EE
- i +44 (0)20 7462 2490 | s.mak@sothebysinstitute.com

### LECTURE & GALLERY TALK

#### Traditions of Photography in China

by Dr Michael Pritchard, Betty Yao, Grace Lau and Stacey Lambrow  
 As part of the historical photography exhibition 'Life in Qing Dynasty Shanghai: The Photographs of William Saunders'.

- £ Admission free
- ⌚ 18.00
- @ China Exchange, 32A Gerrard Street (see map page 109)
- i +44 (0)20 7734 1931 | info@chinaexchange.uk

### PANEL DISCUSSION/NEW CATALOGUE & RECEPTION

#### Chinese and Japanese Works of Art in the Collection of Her Majesty The Queen

An evening event to celebrate the publication of this much-anticipated catalogue raisonné, featuring John Ayers and an expert panel in a discussion of Chinese and Japanese works of art in the Royal Collection.

- £ £15, concessions £13.50
- ⌚ Gallery opens 18.30, panel discussion 19.00, Gallery closes 21.00
- @ The Queen's Gallery, Buckingham Palace
- i +44 (0)30 3123 7340 | learning@royalcollection.org.uk | www.royalcollection.org.uk

### LECTURE

#### The Annual Benjamin Zucker Lecture on Mughal Art Indian Jewellery and the Portuguese during the rise of the Mughal Empire

by Hugo Miguel Crespo

- £ Admission free, booking essential
- ⌚ 19.00-20.00 followed by reception; doors open 18.30 Exhibition Road; for wheelchair access please contact in advance: +44 (0)20 7942 2244/2322
- @ V&A, The Lydia & Manfred Gorvy Lecture Theatre (see page 66)
- i +44 (0)20 7942 2211 | www.vam.ac.uk/whatson

## Friday 11th November

### AUCTION

#### Chinese Ceramics, Works of Art and Textiles

- 🕒 10.00 & 14.00
- @ Christie's South Kensington (see page 57)

### LECTURE

#### Toshiba Lectures in Japanese Art and Science Botanic Japan: Visualising Science The Japanese Collection at Kew

by Masumi Yamanaka and Dr Mark Nesbitt  
Organisation: The Sainsbury Institute for the Study  
of Japanese Arts and Cultures

- £ Admission free, ticketed event, booking essential
- 🕒 14.30
- @ British Museum, BP Lecture Theatre (see page 66)
- i +44 (0)20 7323 8181 | tickets@britishmuseum.org

### LECTURE & RECEPTION

#### Dunhuang and Heritage Management

by Wang Xudong  
Organisation: International Dunhuang Project,  
The British Library

- £ Admission free
- 🕒 19.00-21.00
- @ The British Library, Conference Centre (see page 66)
- i +44 (0)20 7412 7685 | sarah.mullan@bl.uk

## Saturday 12th November

### LECTURE & RECEPTION

#### Words in Clay: The Art of Poetry on Chinese Ceramics

by Yu-ping Luk

- £ £18, concessions £14
- 🕒 15.00-17.00
- @ China Exchange, 32A Gerrard Street (see map page 109)
- i +44 (0)20 7734 1931 | info@chinaexchange.uk



Related Events

## The British Museum

---

Great Russell Street, London WC1B 3DG  
+44 (0)20 7323 8181 [www.britishmuseum.org](http://www.britishmuseum.org)

---

19th May - 27th November 2016

### THE BP EXHIBITION **Sunken Cities: Egypt's lost worlds**

Finds from the lost cities of Heracleion and Canopus, recently rediscovered by underwater archaeologists at the mouth of the Nile, on display for the first time in the UK alongside major objects from Egyptian museums rarely seen outside Egypt.

- £ Adults £16.50, concessions £13, membership & under 16s free
- 🕒 Daily 10.00-17.30; Fri 10.00-20.30
- i +44 (0)20 7323 8181 | [britishmuseum.org/events](http://britishmuseum.org/events)

## Victoria and Albert Museum

---

Cromwell Road, South Kensington, London SW7 2RL  
+44 (0)20 7942 2000 [www.vam.ac.uk/whatson](http://www.vam.ac.uk/whatson)

---

11th October 2016 - 30th April 2017

### DISPLAY Garnitures: **Vase Sets from National Trust Houses**

A history of garnitures for chimney pieces and cabinets (1640-1800) includes Chinese and Japanese ceramics.

- £ Admission is free
- 🕒 Daily 10.00-17.45 (Fri open till 22.00)
- i +44 (0)20 7942 2000 | [www.vam.ac.uk](http://www.vam.ac.uk)

## The Ashmolean Museum

Beaumont Street, Oxford OX1 2PH  
+44 (0)1865 278 000 [www.ashmolean.org](http://www.ashmolean.org)

28th - 29th October 2016

### CONFERENCE Chinese Painting since 1900

Exploring current and future research on modern and contemporary Chinese art, marking the centenary of Michael Sullivan's birth.

- £ Admission free, booking recommended
- 🕒 14.00-18.00 (28th); 10.00-16.30 (29th)
- @ University of Oxford China Centre, Dickson Poon Building, Canterbury Road, Oxford
- i +44 (0)1865 278 460 | [chinesepaintingsprogramme@ashmus.ox.ac.uk](mailto:chinesepaintingsprogramme@ashmus.ox.ac.uk)

20th October 2016 - 26th February 2017

### EXHIBITION Liu Dan: New Landscapes and Old Masters

Explores Liu Dan's relationship with Yuan Dynasty and Italian Renaissance painters and includes Old Master drawings from the Ashmolean.

- £ Admission free
- 🕒 Tues-Sun (incl Bank Hol Mon) 10.00-17.00
- @ Chinese Paintings Gallery, Gallery 11
- i +44 (0)1865 278 000 | [eastern.art@ashmus.ox.ac.uk](mailto:eastern.art@ashmus.ox.ac.uk)

20th October 2016 - 15th January 2017

### EXHIBITION Power and Protection:

#### Islamic Art and the Supernatural

Landmark exhibition exploring divinatory practices and amulets in Islamic traditions.

- £ £10, concessions £9
- 🕒 Tues-Sun (incl Bank Hol Mon) 10.00-17.00
- @ John Sainsbury Exhibition Galleries
- i +44 (0)1865 278 000 | [eastern.art@ashmus.ox.ac.uk](mailto:eastern.art@ashmus.ox.ac.uk)

11th November 2016

### LECTURE 37th Annual Barlow Lecture

#### The Long March to Jingdezhen

by Roger Law  
The satirical caricaturist of *Spitting Image* fame introduces his work over the last decade in Jingdezhen creating large ceramics.

- £ Admission free, booking recommended
- 🕒 17.00
- @ Headley Lecture Theatre
- i +44 (0)1865 278 067 | [eastern.art@ashmus.ox.ac.uk](mailto:eastern.art@ashmus.ox.ac.uk)

## Compton Verney

Warwickshire CV35 9HZ  
+44 (0)1926 645 500 [www.comptonverney.org.uk](http://www.comptonverney.org.uk)

Tues-Sun until 11th December 2016

**PERMANENT CHINESE COLLECTION** at Compton Verney is designated a collection of national importance.

- £ Collections and Park Day ticket: Adults £8, concessions £7.20, child £3, family (2 adults & up to 4 children) £16; under 5's free
- 🕒 11.00-17.00 (closed Mon)
- i +44 (0)1926 645 500 | [info@comptonverney.org.uk](mailto:info@comptonverney.org.uk)

## The Museum of East Asian Art

12 Bennett Street, Bath BA1 2QJ  
+44 (0)1225 464 640 [www.meaa.org.uk](http://www.meaa.org.uk)

25th June 2016 - 12th February 2017

### EXHIBITION Red

Explores one of the most symbolic colours in Chinese culture and the materials used to produce red colours.

- £ Free with museum admission: adults £5, seniors £4, children under 16 & full-time students with ID free
- 🕒 Tues-Sat 10.00-17.00, Sun 12.00-17.00, Mon closed
- i +44 (0)1225 464 640

## Oriental Museum, Durham University

Elvet Hill, Durham, DH1 1TH  
+44(0)191 334 5694 [www.dur.ac.uk/oriental.museum/](http://www.dur.ac.uk/oriental.museum/)

7th June - 27th November 2016

### EXHIBITION The Shogun's Cultured Warriors

- £ Adults £1.50, over 60s 75p, children 5 and over 75p, family £3.50
- 🕒 Mon-Fri 10.00-17.00, weekend & Bank Hols 12.00-17.00
- i +44(0)191 334 5694 | [oriental.museum@durham.ac.uk](mailto:oriental.museum@durham.ac.uk)

14th October 2016 - 30th March 2017

### EXHIBITION In the Image of the Other:

#### Visualising a British-Himalayan Town, Shimla.

#### A Photographic Exhibition by Siddharth Pandey

- £ Adults £1.50, over 60s 75p, children 5 and over 75p, family £3.50
- 🕒 Mon-Fri 10.00-17.00, weekend & Bank Hols 12.00-17.00
- i +44(0)191 334 5694 | [oriental.museum@durham.ac.uk](mailto:oriental.museum@durham.ac.uk)

## University of Oxford

---

Dept of Continuing Education, Rewley House, 1 Wellington Square  
Oxford OX1 2JA  
+44 (0)1865 270 380 [www.conted.ox.ac.uk/V350-348](http://www.conted.ox.ac.uk/V350-348)

---

12th November 2016

### STUDY DAY Indian Textiles

by Jasleen Kandhari

Explore India's rich textile traditions from Punjab, Gujarat, Bengal, Rajasthan and history of Indian dress through lectures, object analysis session.

- £ £66
- ⌚ 10.00-17.00
- i +44(0)1865 270 380 | [jasleen.kandhari@conted.ox.ac.uk](mailto:jasleen.kandhari@conted.ox.ac.uk)

## The Sainsbury Institute for the Study of Japanese Arts & Cultures

---

64 The Close, Norwich, NR1 4DH  
+44 (0)1603 597 510 [www.sainsbury-institute.org](http://www.sainsbury-institute.org)

---

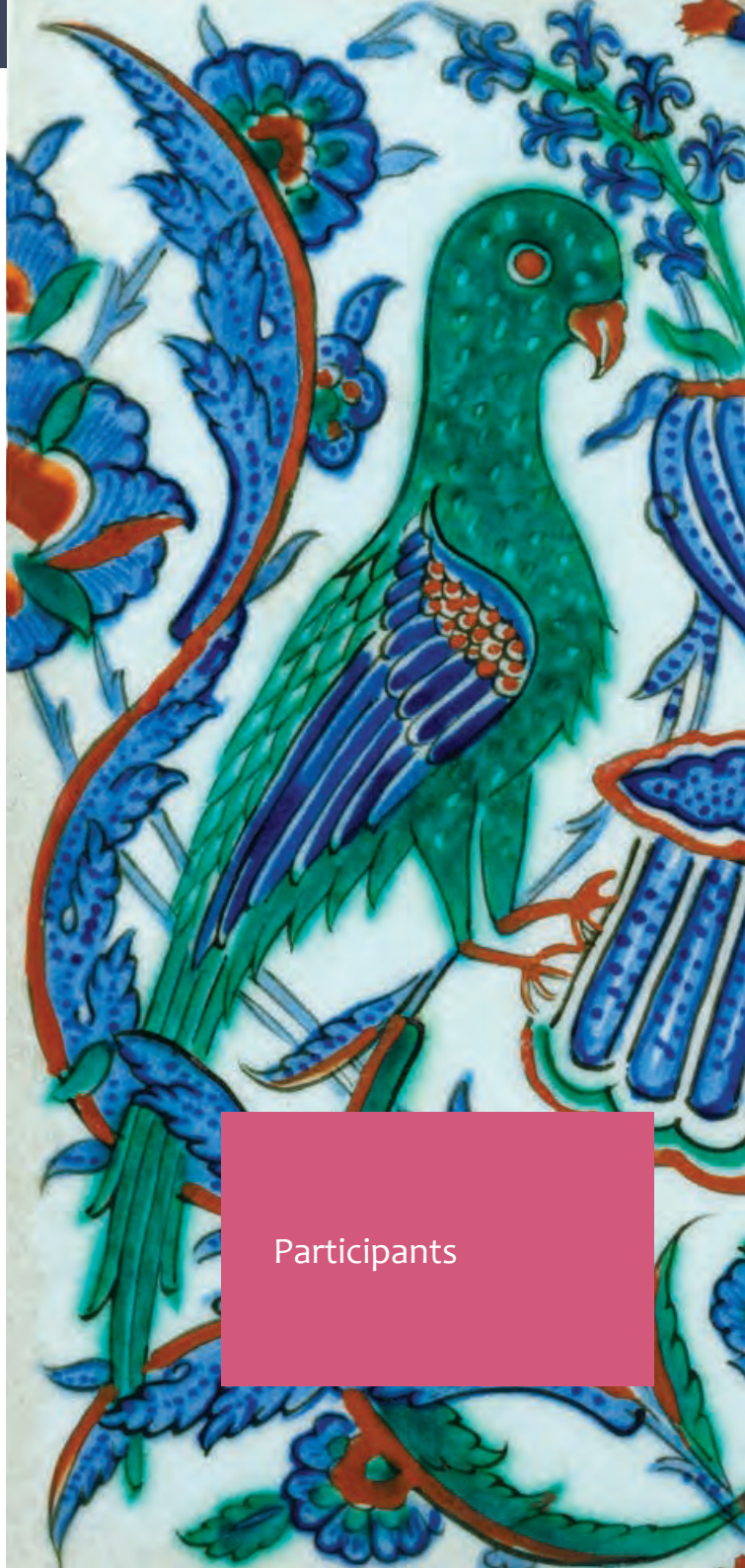
17th November 2016

### LECTURE Toshiba Lectures in Japanese Art and Science Botanic Japan: Visualising Science Flora Japonica

by Masumi Yamanaka

Organisation: The Sainsbury Institute for the Study of Japanese Arts & Cultures

- £ Admission free, places limited
- ⌚ 18.00
- @ Norwich Cathedral Hostry, Weston Room
- i +44 (0)1603 597 507 | [sisjac@sainsbury-institute.org](mailto:sisjac@sainsbury-institute.org)



Participants

|    | Dealers                        | Speciality |   |   |   |   |  |   |   |   |  |  |   |  |    |
|----|--------------------------------|------------|---|---|---|---|--|---|---|---|--|--|---|--|----|
| 1  | Aktis Gallery                  |            |   |   |   |   |  |   | C |   |  |  |   |  | Co |
| 2  | Raquelle Azran Vietnamese Art  |            |   | S |   |   |  |   |   |   |  |  |   |  | Co |
| 3  | David Baker Oriental Art       |            |   | S |   |   |  | C | J | K |  |  |   |  |    |
| 4  | Gregg Baker Asian Art          |            |   |   |   |   |  | C | J |   |  |  |   |  |    |
| 5  | Kamal Bakhshi Modern Asian Art |            |   |   |   |   |  |   | J |   |  |  |   |  | Co |
| 6  | Rosemary Bandini               |            |   |   |   |   |  |   | J |   |  |  |   |  |    |
| 7  | Joost van den Bergh            |            |   | I | S | H |  |   | J |   |  |  |   |  | Co |
| 8  | Berwald Oriental Art           |            |   |   |   |   |  |   | C |   |  |  |   |  |    |
| 9  | Brandt Asian Art               |            |   |   |   |   |  |   | C | J |  |  |   |  |    |
| 10 | Brun Fine Art                  |            |   |   |   |   |  |   | C | J |  |  | E |  |    |
| 11 | Prahlad Bubbar                 |            | M | I |   | H |  |   |   |   |  |  |   |  | Co |
| 12 | Cohen & Cohen                  |            |   |   |   |   |  |   | C |   |  |  | E |  |    |
| 13 | Rob Dean Art                   |            |   | I | S | H |  |   |   |   |  |  |   |  | Co |
| 14 | Eskenazi Ltd                   |            |   |   |   |   |  |   | C |   |  |  |   |  | Co |
| 15 | John Eskenazi                  |            |   | I | S | H |  |   |   |   |  |  |   |  |    |
| 16 | Malcolm Fairley Ltd            |            |   |   |   |   |  |   |   | J |  |  |   |  |    |
| 17 | Peter Finer                    |            | M | I | S | H |  | C | J |   |  |  |   |  |    |
| 18 | Fitzgerald Fine Arts           |            |   |   |   |   |  |   | C |   |  |  |   |  | Co |
| 19 | MD Flacks                      |            |   |   |   |   |  |   | C |   |  |  |   |  | Co |
| 20 | Fleurdelys Antiquités          |            |   |   |   |   |  |   | C |   |  |  | E |  |    |
| 21 | Sam Fogg                       |            | M | I | S | H |  |   |   |   |  |  |   |  |    |
| 22 | Francesca Galloway             |            | M | I | S |   |  |   |   |   |  |  | E |  |    |
| 23 | Genrokuart                     |            |   |   |   |   |  |   |   | J |  |  |   |  |    |
| 24 | Nicholas Grindley              |            |   |   |   |   |  |   | C |   |  |  |   |  |    |
| 25 | Grosvenor Gallery              |            |   | I |   |   |  |   |   |   |  |  |   |  | Co |
| 26 | Han Collection                 |            |   |   |   |   |  |   |   |   |  |  | K |  | Co |
| 27 | Hanga Ten                      |            |   |   |   |   |  |   |   | J |  |  |   |  | Co |
| 28 | Ben Janssens Oriental Art Ltd  |            |   |   |   |   |  |   | C | J |  |  |   |  |    |
| 29 | Jhaveri Contemporary           |            |   |   |   |   |  |   |   |   |  |  |   |  | Co |

|          |                               |           |                  |
|----------|-------------------------------|-----------|------------------|
| <b>M</b> | Islamic & Middle Eastern Art  | <b>J</b>  | Japanese Art     |
| <b>I</b> | Indian Art                    | <b>K</b>  | Korean Art       |
| <b>S</b> | Southeast Asian Art           | <b>E</b>  | Export Art       |
| <b>H</b> | Himalayan & Central Asian Art | <b>Co</b> | Contemporary Art |
| <b>C</b> | Chinese Art                   |           |                  |

|    | Dealers                           | Speciality |   |   |   |   |  |   |   |   |   |   |   |  |    |
|----|-----------------------------------|------------|---|---|---|---|--|---|---|---|---|---|---|--|----|
| 30 | Roger Keverne Ltd                 |            |   |   |   |   |  |   | C |   |   |   |   |  |    |
| 31 | Littleton & Hennessy Asian Art    |            |   |   |   |   |  |   | C |   |   |   |   |  |    |
| 32 | Marchant                          |            |   |   |   |   |  |   | C | J |   | E |   |  |    |
| 33 | Mayor Gallery                     |            |   |   |   |   |  |   |   |   |   |   |   |  | Co |
| 34 | Mika Gallery                      |            |   |   |   |   |  |   |   | J |   |   |   |  | Co |
| 35 | Sydney L. Moss Ltd                |            |   |   |   |   |  |   | C | J |   |   |   |  |    |
| 36 | Simon Pilling                     |            |   |   |   |   |  |   |   | J |   |   |   |  | Co |
| 37 | Nicholas Pitcher Oriental Art Ltd |            |   |   |   |   |  |   | C |   |   |   |   |  |    |
| 38 | Priestley & Ferraro               |            |   |   |   |   |  |   | C |   | K |   |   |  |    |
| 39 | Simon Ray                         |            | M | I | S |   |  |   |   |   |   |   |   |  |    |
| 40 | Röell Fine Art                    |            | M | I | S |   |  |   |   |   |   |   | E |  |    |
| 41 | Rossi & Rossi                     |            |   | I |   | H |  | C |   |   |   |   |   |  | Co |
| 42 | Gallery Elena Shchukina           |            |   |   |   |   |  |   | C | J | K |   |   |  | Co |
| 43 | Jacqueline Simcox Ltd             |            |   |   |   |   |  | H | C |   |   |   |   |  |    |
| 44 | Runjeet Singh                     |            | M | I | S | H |  | C | J | K |   |   |   |  |    |
| 45 | Grace Tsumugi Fine Art Ltd        |            |   |   |   |   |  |   |   | J |   |   |   |  |    |
| 46 | Jonathan Tucker Antonia Tozer     |            |   | I | S |   |  |   | C |   |   |   |   |  |    |
| 47 | Jorge Welsh                       |            |   | I | S |   |  |   | C | J |   | E |   |  |    |
| 48 | YEWN, the Heritage Jeweller       |            |   |   |   |   |  |   | C |   |   |   |   |  | Co |

|    | Auction Houses              | Speciality |   |   |   |   |   |   |   |   |  |  |  |  |    |
|----|-----------------------------|------------|---|---|---|---|---|---|---|---|--|--|--|--|----|
| 49 | Bonhams                     | M          | I | S | H | C | J | K | E |   |  |  |  |  |    |
| 50 | Bonhams Knightsbridge       |            |   |   | H | C | J | K | E |   |  |  |  |  |    |
| 51 | Christie's                  | M          | I | S | H | C | J | K | E |   |  |  |  |  |    |
| 52 | Christie's South Kensington | M          | I | S | H | C |   | K | E |   |  |  |  |  |    |
| 53 | Lyon & Turnbull             |            |   | S |   |   | C | J | K | E |  |  |  |  | Co |
| 54 | Nagel Auktionen             |            |   |   | H | C | J | K |   |   |  |  |  |  |    |
| 55 | Sotheby's                   | M          | I | S | H | C |   | K | E |   |  |  |  |  |    |
| 60 | Woolley & Wallis            | M          | I | S | H | C | J | K | E |   |  |  |  |  |    |





Iana Kobeleva  
10-11 Park Place, St James's  
London SW1A 1LP  
+44 (0)20 7629 6531  
info@aktis-gallery.co.uk  
www.aktis-gallery.co.uk

## Aktis Gallery

1 | SEE MAP PAGE 109

### EXHIBITION

#### Chinese Black: Zao Wou-Ki and Wang Keping

Catalogue available

### ON VIEW

3rd- 12th November

### SPECIALISATION

Chinese contemporary sculpture, Chinese modern and contemporary ink painting

### EXHIBITION HOURS

|          |                              |
|----------|------------------------------|
| Mon -Sat | 10.00-14.00<br>& 15.00-18.00 |
| Sat 5th  | 10.00-18.00                  |
| Sun 6th  | 10.00-21.00                  |
| Sat 12th | 10.00-18.00                  |



Raquelle Azran  
Business address:  
320 East 57th Street  
New York, NY 10022, USA  
(during AAL) +44 (0)7906 638 640  
Gallery: +44 (0)20 7930 3839  
raquelle.azran@gmail.com  
www.artnet.com/razran.html

## Raquelle Azran Vietnamese Contemporary Fine Art

2 | SEE MAP PAGE 109

### EXHIBITION

#### Vietnam Past and Presents

Catalogue available

### ON VIEW

3rd - 7th November

**AT** Guy Peppiatt/Stephen Ongpin Gallery, 6 Mason's Yard  
Duke St, St James's  
London SW1Y 6BU

### SPECIALISATION

Vietnamese contemporary fine art

### EXHIBITION HOURS

|         |             |
|---------|-------------|
| Mon-Fri | 11.00-18.00 |
| Sat 5th | 11.00-18.00 |
| Sun 6th | 11.00-18.00 |

and by appointment

## David Baker Oriental Art Ltd

3 | SEE MAP PAGE 110

### EXHIBITION

#### Recent Acquisitions

### ON VIEW

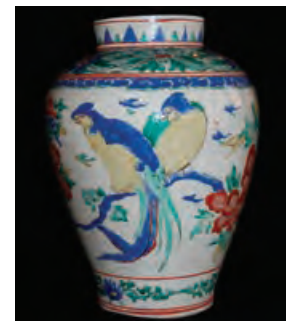
3rd - 12th November

### SPECIALISATION

Chinese, Japanese, Korean ceramics and works of art

### EXHIBITION HOURS

|          |             |
|----------|-------------|
| Mon-Fri  | 10.00-18.00 |
| Sat 5th  | 11.00-18.00 |
| Sun 6th  | 10.00-18.00 |
| Mon 7th  | 10.00-21.00 |
| Sat 12th | 11.00-18.00 |



David Baker  
First floor (above Halcyon Gallery)  
29 New Bond Street, Mayfair  
London W1S 2RL  
+44 (0)20 7493 5165  
+44 (0)7973 625 229  
david@asianartlondon.com  
www.asianartlondon.com



## Gregg Baker Asian Art

4 | SEE MAP PAGE 108

### EXHIBITION

#### Infinite Space: The New Japan

Catalogue available

### ON VIEW

3rd - 12th November

### SPECIALISATION

Japanese paper screens, hanging scrolls, Buddhist sculpture, Japanese post-war avant-garde paintings

### EXHIBITION HOURS

|          |             |
|----------|-------------|
| Mon-Fri  | 10.00-18.00 |
| Sat 5th  | 11.00-21.00 |
| Sun 6th  | closed      |
| Sat 12th | 11.00-16.00 |



Olympia Toptsidou  
142 Kensington Church Street  
London W8 4BN  
+44 (0)20 7221 3533  
info@japanesescreens.com  
www.japanesescreens.com





Kamal Bakhshi

Business address:

By appointment only

1 Phillimore Place, London W8 7BY

+44 (0)7843 273 638

info@kamalbakhshi.co.uk

www.kamalbakshi.co.uk

## Kamal Bakhshi Modern Asian Art

5 | SEE MAP PAGE 108

### EXHIBITION

**Kazuko Shiihashi and Sei Arimori: landscapes real and imagined in modern Japanese painting**

### ON VIEW

3rd - 11th November

### SPECIALISATION

Contemporary Japanese artists using traditional techniques

### EXHIBITION HOURS

by appointment only

Mon-Fri 10.00-18.00

Sat 5th 12.00-17.00

Sun 6th 12.00-17.00



Rosemary Bandini

Business address:

PO Box 2281

Woodford Green, IG7 5YP

+44 (0)7968 182 292

netsuke@rosemarybandini.co.uk

www.rosemarybandini.co.uk

## Rosemary Bandini

6 | SEE MAP PAGE 109

### EXHIBITION

**Japanese Netsuke, Lacquer and Works of Art**  
Catalogue available

### ON VIEW

3rd - 11th November

AT Gallery 8, 8 Duke Street

St James's, London SW1Y 6BN

### SPECIALISATION

Japanese netsuke and inro

### EXHIBITION HOURS

Mon-Fri 10.00-18.00

Sat 5th 11.00-17.00

Sun 6th 11.00-21.00

Sat 12th closed

## Joost van den Bergh

7 | SEE MAP PAGE 109

### EXHIBITION

**Magic Markings, Tantra, Jain & Ritual Art from India**  
Catalogue available

### ON VIEW

4th - 18th November

### SPECIALISATION

Indian art, Japanese art

### EXHIBITION HOURS

Mon-Fri 10.00-18.00

Sat 5th 11.00-17.00

Sun 6th 16.00-21.00

Sat 12th by appointment only



Joost van den Bergh

91c Jermyn Street, St James's  
London SW1Y 6JB

+44 (0)20 7839 8200

joost@joostvandenbergh.com

www.joostvandenbergh.com



## Berwald Oriental Art

8 | SEE MAP PAGE 111

### EXHIBITION

**Recent Acquisitions**

### ON VIEW

1st - 11th November

### SPECIALISATION

Chinese ceramics  
from Han to Qing

### EXHIBITION HOURS

Mon-Fri 10.00-18.00

Sat 5th 10.00-18.00

Sun 6th 12.00-18.00

Mon 7th 10.00-20.30

Sat 12th closed



John Berwald, Susan Groot

17 Clifford Street

Mayfair, London W1S 3RQ

+44 (0)20 7434 0424

+44 (0)7973 822 724

john@berwald-oriental.com

www.berwald-oriental.com





Robert Brandt

7 Georgian House  
10 Bury Street, St James's  
London SW1Y 6AA

+44 (0)20 7930 9368

+44 (0)7774 989 661

brandt@nildram.co.uk  
www.brandtasianart.com



## Brandt Asian Art

9 | SEE MAP PAGE 109

### EXHIBITION

**Recent Acquisitions**  
Catalogue available

### ON VIEW

3rd - 11th November

### SPECIALISATION

Chinese and Japanese  
textiles and works of art

### EXHIBITION HOURS

Mon-Fri 11.00-17.00

Sat 5th closed

Sun 6th 11.00-20.00

Sat 12th closed

## Prahlad Bubbar Ltd

11 | SEE MAP PAGE 111

### EXHIBITION

**La Lumière de la Lune et  
du Soleil: The Arts of India  
and Beyond 1500-1930**  
Catalogue available

### ON VIEW

1st - 12th November

### SPECIALISATION

Indian, Islamic and Himalayan  
Art and Photography

### EXHIBITION HOURS

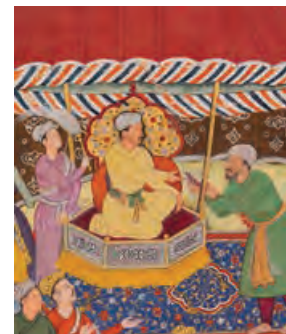
Mon-Fri 10.00-18.00

Sat 5th 10.00-18.00

Sun 6th 10.00-17.00

Mon 7th 10.00-21.00

Sat 12th by appointment  
only



Prahlad Bubbar

33 Cork Street, First Floor  
Mayfair, London W1S 3NQ

+44 (0)20 7494 3144

info@prahladbubbar.com  
www.prahladbubbar.com



Giovanni Laceranza

38 Old Bond Street, Mayfair  
London W1S 4QW

+44 (0)20 7493 0195

+44 (0)7591 834 537

info@brunfineart.com  
www.brunfineart.com



## Brun Fine Art

10 | SEE MAP PAGE 111

### EXHIBITION

**Recent Acquisitions**

### ON VIEW

3rd - 12th November

### SPECIALISATION

Asian art, porcelains, jades,  
bronzes

### EXHIBITION HOURS

Mon-Fri 10.00-18.00

Sat 5th 10.00-17.00

Sun 6th 12.00-17.00

Mon 7th 10.00-21.00

Sat 12th 10.00-17.00

## Cohen & Cohen

12 | SEE MAP PAGE 109

### EXHIBITION

**Tiger Tiger**  
Catalogue available

### ON VIEW

3rd - 11th November

### AT Harris Lindsay Gallery

67 Jermyn Street, St James's  
London SW1Y 6NY

### SPECIALISATION

Chinese Export porcelain  
and works of art

### EXHIBITION HOURS

Mon-Fri 10.00-17.00

Sat 5th 11.00-17.00

Sun 6th 16.00-21.00

Sat 12th closed



Michael Cohen, Ewa Cohen  
William Motley

Business address:  
PO Box 366, Reigate RH2 2BB

+44 (0)1737 242 180

+44 (0)7710 057 262

(during AAL) +44 (0)20 7839 5767

cohenandcohen@aol.com  
www.cohenandcohen.co.uk



Rob Dean

Business address:

By appointment only

1 The Street, Woolpit

Bury St Edmunds, Suffolk IP30 9SA

+44 (0)7764 942 306

rob@robdeanart.com

www.robdeanart.com



## Rob Dean Art

13 | SEE MAP PAGE 109

### EXHIBITION

**Indian Paintings,  
Classical and Modern**

Online catalogue

### ON VIEW

3rd - 11th November

**AT** Grosvenor Gallery  
32 St James's Street, St James's  
London SW1A 1HD

### SPECIALISATION

Indian and South Asian art,  
classical and modern

### EXHIBITION HOURS

|          |             |
|----------|-------------|
| Mon-Fri  | 11.00-17.00 |
| Sat 5th  | 12.00-16.00 |
| Sun 6th  | 12.00-21.00 |
| Sat 12th | closed      |

## Eskenazi Ltd

14 | SEE MAP PAGE 111

### EXHIBITION

**Early Chinese Art from  
Private Collections**  
Catalogue available

### ON VIEW

3rd - 25th November

### EXHIBITION

**Recent Paintings by Zeng Xiaojun**  
Catalogue available

### ON VIEW

5th October - 25th November

### SPECIALISATION

Chinese art

### EXHIBITION HOURS

|                     |             |
|---------------------|-------------|
| Mon-Fri             | 09.30-17.30 |
| Sat 8th Oct         | 10.00-17.00 |
| Sun 9th Oct         | 10.00-17.00 |
| Sat 5th Nov         | 10.00-17.00 |
| Sun 6th Nov         | 10.00-17.00 |
| Mon 7th Nov         | 09.30-20.30 |
| Sat 12th & 19th Nov | 10.00-13.00 |



Daniel Eskenazi, Sarah Wong

10 Clifford Street, Mayfair  
London W1S 2LJ

+44 (0)20 7493 5464

gallery@eskenazi.co.uk

www.eskenazi.co.uk



## John Eskenazi Ltd

15

### EXHIBITION

**Recent Acquisitions**

### ON VIEW

6th October - 12th November

### SPECIALISATION

Indian, Gandharan, Southeast  
Asian and Himalayan art

### EXHIBITION HOURS

Please telephone or email for  
an appointment, weekends  
included.



John Eskenazi

by appointment only

PO Box 55621

London W9 2XA

+44 (0)20 7409 3001

info@john-eskenazi.com

www.john-eskenazi.com

## Malcolm Fairley Ltd

16 | SEE MAP PAGE 109

### EXHIBITION

**Recent Acquisitions  
including a collection of spear  
head covers**

Catalogue available

### ON VIEW

3rd - 11th November

### SPECIALISATION

Japanese works of art  
including metalwork, enamels  
and lacquer

### EXHIBITION HOURS

|          |             |
|----------|-------------|
| Mon-Fri  | 10.00-18.00 |
| Sat 5th  | 12.00-17.00 |
| Sun 6th  | 12.00-17.00 |
| Sat 12th | closed      |

Malcolm Fairley, Vanessa Fryer,  
Asako Bavister40 Bury Street, St James's  
London SW1Y 6AU

+44 (0)20 7930 8770

info@malcolmfairley.com

www.malcolmfairley.com





Redmond Finer, Roland Finer  
38-39 Duke Street, St James's  
London SW1Y 6DF  
+44 (0)20 7839 5666  
+44 (0)7775 613 028  
gallery@peterfiner.com  
www.peterfiner.com

## Peter Finer

17 | SEE MAP PAGE 109

**EXHIBITION**  
**Islamic and Oriental Arms  
and Armour**

**ON VIEW**  
3rd - 12th November

**SPECIALISATION**  
Arms and armour  
and related objects

**EXHIBITION HOURS**  
Mon-Fri 10.00-18.00  
Sat 5th 12.00-17.00  
Sun 6th 12.00-21.00  
Sat 12th 12.00-17.00



Justin Warner  
40 Wooster Street  
New York, NY 10013  
USA  
+1 212 966 5754  
inquiries@fitzgeraldfinearts.com  
www.fitzgeraldfinearts.com

## Fitzgerald Fine Arts

18 | SEE MAP PAGE 112

**EXHIBITION**  
**Han Bing: Urban Amber**  
Catalogue available

**ON VIEW**  
3rd - 12th November

**AT** Dorsett Shepherds Bush  
58 Shepherds Bush Green  
London W12 8QE

**SPECIALISATION**  
Contemporary Asian art

**EXHIBITION HOURS**  
Daily incl eves until 12th Nov

## MD Flacks (UK) Ltd

19 | SEE MAP PAGE 109

**EXHIBITION**  
**The Swinging Scholar: Scholar's  
art old and new including new  
works by Clive Barker**  
Catalogue available

**ON VIEW**  
4th - 11th November

**AT** Alan Wheatley Art  
22 Mason's Yard, St James's  
London SW1Y 6BU

**SPECIALISATION**  
Chinese art, furniture,  
Scholar's objects, ink art

**EXHIBITION HOURS**  
Mon-Fri 10.00-17.00  
Sat 5th 12.00-17.00  
Sun 6th 12.00-20.00  
Sat 12th closed



Marcus Flacks  
Business address:  
21 Neville Drive  
London N2 0QS  
+44 (0)20 7930 1262  
+44 (0)7974 323 455  
flacks@btinternet.com  
www.mdflacks.com

## Fleurdelys Antiquités

20 | SEE MAP PAGE 108

**EXHIBITION**  
**The Art of Display**

**ON VIEW**  
3rd - 12th November

**SPECIALISATION**  
Chinese works of art, wood  
stands and Scholar's objects

**EXHIBITION HOURS**  
Mon-Fri 10.00-18.00  
Sat 5th 10.00-16.00  
Sun 6th closed  
Sat 12th 10.00-16.00



Ms Laurence Paul  
At Patrick Sandberg Antiques  
150-152 Kensington Church Street  
London W8 4BN  
+44 (0)20 7258 1144  
+44 (0)7798 600 437  
info@chinesewoodstands.com  
www.chinesewoodstands.com



Andrew Butler-Wheelhouse  
15D Clifford Street, Mayfair  
London W1S 4JZ  
+44 (0)20 7534 2100  
andrew@samfogg.com  
www.sanfogg.com



## Sam Fogg

21 | SEE MAP PAGE 111

**EXHIBITION**  
**A Library of Manuscripts from India**  
Catalogue available

**ON VIEW**  
2nd - 11th November

**SPECIALISATION**  
Indian and Islamic manuscripts and works of art

**EXHIBITION HOURS**  
Mon-Fri 09.30-17.30  
Sat 5th 11.00-16.00  
Sun 6th closed  
Mon 7th 09.30-20.00  
Sat 12th closed



Christine Ramphal, Lucy Southgate  
31 Dover Street, First Floor  
Mayfair, London W1S 4ND  
+44 (0)20 7499 6844  
christine@francescagalloway.com  
lucy@francescagalloway.com  
www.francescagalloway.com



## Francesca Galloway

22 | SEE MAP PAGE 111

**EXHIBITION**  
**Pahari Paintings from the Eva & Konrad Seitz Collection**  
Catalogue available

**ON VIEW**  
3rd - 11th November

**SPECIALISATION**  
Indian and Islamic art

**EXHIBITION HOURS**  
Mon-Fri 10.00-17.00  
Sat 5th 11.00-17.00  
Sun 6th closed  
Mon 7th 10.00-17.00  
& 18.00-20.00  
Sat 12th closed

## Genrokuart

23 | SEE MAP PAGE 109

**EXHIBITION**  
**Four Hundred Years of Japanese Porcelain**

**ON VIEW**  
3rd - 12th November

**AT** Duncan R. Miller Fine Arts 6  
Bury Street, St James's  
London SW1Y 6AB

**SPECIALISATION**  
Japanese and selected Chinese porcelains and works of art

**EXHIBITION HOURS**  
Mon-Fri 11.00-18.00  
Sat 5th 11.00-17.00  
Sun 6th 12.00-21.00  
Mon 12th 12.00-17.00



Riccardo Montanari  
Business address:  
by appointment only  
Rome and Tokyo  
+39 335 5482911  
+ 44 (0) 7414 756 837  
info@genrokuart.com  
www.genrokuart.com

## Nicholas Grindley

24 | SEE MAP PAGE 109

**EXHIBITION**  
**The Photography of Dr Georges Auguste Morache (1837-1906)**  
Catalogue available

**ON VIEW**  
3rd, 4th, 7th - 11th November

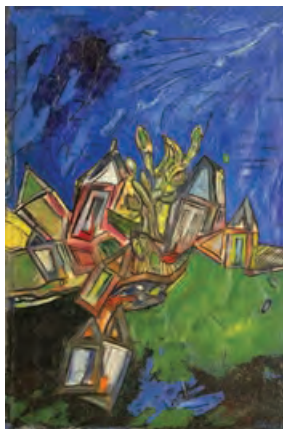
**AT** Hazlitt, 38 Bury Street  
St James's, London SW1Y 6BB

**SPECIALISATION**  
Chinese furniture and works of art; early photography of China

**EXHIBITION HOURS**  
Mon-Fri 10.00-17.00  
Sat 5th closed  
Sun 6th closed  
Sat 12th closed



Rebecca Gardner  
Admin address only:  
The Boathouse, High Road  
Great Finborough, Suffolk IP14 3AQ  
+44 (0)1449 777 980  
+44 (0)7766 232 809  
rebecca@nicholasgrindley.com  
www.nicholasgrindleyphotographyofchina.com  
www.nicholasgrindley.com



Conor Macklin, Charles Moore  
Kajoli Khanna

32 St James's Street, St James's  
London SW1A 1HD

+44 (0)20 7484 7979

art@grosvenorgallery.com  
www.grosvenorgallery.com

## Grosvenor Gallery

25 | SEE MAP PAGE 109

### EXHIBITION

**Bakre, Ribeiro, Souza**  
**Indian Modernist**  
**Landscapes 1950-1970**  
E-catalogue

### ON VIEW

3rd - 12th November

### SPECIALISATION

Modern and contemporary  
South Asian art

### EXHIBITION HOURS

|          |             |
|----------|-------------|
| Mon-Fri  | 09.30-18.00 |
| Sat 5th  | 12.00-16.00 |
| Sun 6th  | 12.00-21.00 |
| Sat 12th | 12.00-16.00 |



Jinsoo Park

33 Museum Street  
Bloomsbury, London WC1A 1LH

+44 (0)20 7637 8880

+44 (0)7951 746 614

info@hancollection.co.uk  
www.hancollection.co.uk

## Han Collection

26 | SEE MAP PAGE 112

### EXHIBITION

**Brilliant Hues: Korean**  
**Antiques and Arts**  
Catalogue available

### ON VIEW

3rd - 12th November

### SPECIALISATION

Korean antiques and arts

### EXHIBITION HOURS

|          |             |
|----------|-------------|
| Mon-Fri  | 10.30-18.00 |
| Sat 5th  | 10.30-19.00 |
| Sun 6th  | 12.00-19.00 |
| Sat 12th | 10.30-19.00 |

## Hanga Ten

27 | SEE MAP PAGE 109

### EXHIBITION

**Katsunori Hamanishi:**  
**Master of Mezzotint**  
**Meet the Artist**

### ON VIEW

31st October - 11th November

AT Gallery 8, 8 Duke Street  
St James's, London SW1Y 6BN

### SPECIALISATION

Contemporary Japanese prints  
and paintings

### EXHIBITION HOURS

|          |             |
|----------|-------------|
| Mon-Fri  | 10.00-18.00 |
| Sat 5th  | 11.00-17.00 |
| Sun 6th  | 11.00-21.00 |
| Sat 12th | closed      |



Chiko Nara

Business address:  
by appointment only  
PO Box 67812, South Kensington  
London SW7 9BL

+44 (0)7788 458 201

japaneseprints@hangaten.com  
www.hangaten.com

Gallery Talk (see pages 15 & 16)



## Ben Janssens Oriental Art Ltd

28 | SEE MAP PAGE 109

### EXHIBITION

**In Scholar's Taste**  
Catalogue available

### ON VIEW

3rd - 11th November

### SPECIALISATION

Early Chinese sculpture,  
bronzes, ceramics, later  
Chinese and Japanese  
works of art

### EXHIBITION HOURS

|          |             |
|----------|-------------|
| Mon-Fri  | 10.00-18.00 |
| Sat 5th  | 10.00-17.00 |
| Sun 6th  | 16.00-20.00 |
| Sat 12th | closed      |



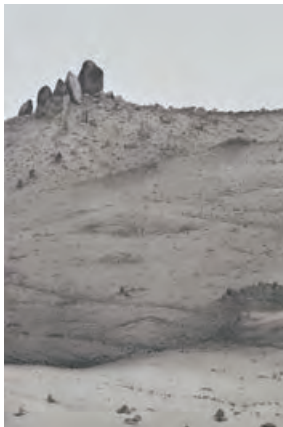
Ben Janssens, Thea-Vanessa Buen  
Grace Tu

91c Jermyn Street, St James's  
London SW1Y 6JB

+44 (0)20 7976 1888

info@benjanssens.com  
www.benjanssens.com





Amrita Jhaveri

Business address:

2 Krishna Niwas

58A Walkeshwar Road

Mumbai 400006

+44 (0)20 7930 5500

amrita@jhavericontemporary.com

www.jhavericontemporary.com

## Jhaveri Contemporary

29 | SEE MAP PAGE 111

### EXHIBITION

**Ali Kazim - Ruins**

### ON VIEW

3rd - 15th November

### AT Rossi & Rossi

27 Dover Street, Mayfair

London W1S 4LZ

### SPECIALISATION

South Asian modern and contemporary art

### EXHIBITION HOURS

Mon-Fri 10.00-18.00

Sat 5th 11.00 - 16.00

Sun 6th 12.00-17.00

Mon 7th 10.00-21.00

Sat 12th 11.00-16.00



Roger Keverne, Kate Francis

16 Clifford Street, Second Floor

Mayfair, London W1S 3RG

+44 (0)20 7434 9100

enquiries@keverne.co.uk

www.keverne.co.uk

## Roger Keverne Ltd

30 | SEE MAP PAGE 111

### EXHIBITION

**Chinese Works of Art**

### ON VIEW

3rd - 11th November

### SPECIALISATION

Chinese ceramics and works of art

### EXHIBITION HOURS

Mon-Fri 10.00-17.00

Sat 5th 12.00-17.00

Sun 6th 12.00-17.00



## Littleton & Hennessy Asian Art

31 | SEE MAP PAGE 109

### EXHIBITION

**Chinese Works of Art**

### ON VIEW

3rd - 11th November

### SPECIALISATION

Chinese works of art and scholars' objects

### EXHIBITION HOURS

Mon-Fri 10.00-17.00

Sat 5th 12.00-16.00

Sun 6th 12.00-20.30

appointment preferred



James Hennessy, Mark Slaats

1 Princes Place, Duke Street

St James's, London SW1Y 6DE

+44 (0)20 7930 0888

+44 (0)7717 825 828

mark@littletonandhennessy.com

www.littletonandhennessy.com

## Marchant

32 | SEE MAP PAGE 108

### EXHIBITION

**Kangxi Blue and White and Underglaze Copper-Red**

Catalogue available

### ON VIEW

2nd - 18th November

### SPECIALISATION

Ming and Qing ceramics, jades and works of art

### EXHIBITION HOURS

Mon-Fri 10.00-18.00

Sat 5th 11.00-20.00

Sun 6th 11.00-18.00

Sat 12th closed



Richard Marchant,

Stuart Marchant, Natalie and

Samuel Marchant

120 Kensington Church Street

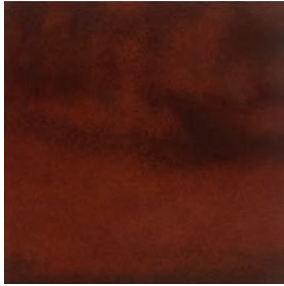
London W8 4BH

+44 (0)20 7229 5319

gallery@marchantasianart.com

www.marchantasianart.com





James Mayor  
21 Cork Street, First Floor  
London W1S 3LZ  
+44 (0)20 7734 3558  
info@mayorgallery.com  
www.mayorgallery.com



## Mayor Gallery

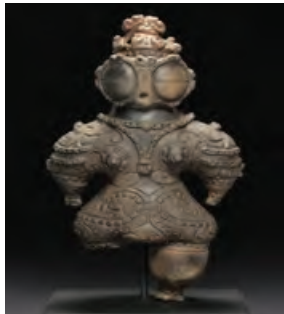
33 | SEE MAP PAGE 111

**EXHIBITION**  
**Jiang Dahai - Diffusion**  
Catalogue available

**ON VIEW**  
3rd November - 17th  
December

**SPECIALISATION**  
Zero and Concrete Art with  
Focus on Conceptualism and  
Minimalism

**EXHIBITION HOURS**  
Mon-Fri 10.00-17.30  
Sat 5th 12.00-16.00  
Sun 6th 12.00-16.00  
Mon 7th 10.00-20.00  
Sat 12th 12.00-16.00



Yu Okuzono  
Business address:  
Mika Gallery, 595 Madison Avenue  
Fuller Building, Eighth Floor  
New York, NY 10022, USA  
&  
Shouun Oriental Art, 1-5-15 Ginza  
Chuo-ku Tokyo 104-0061, Japan  
+81 (0)3 3535 1007  
info@mikagallery.com  
www.mikagallery.com /  
www.shouun.co.jp



## Mika Gallery Shouun Oriental Art

34 | SEE MAP PAGE 109

**EXHIBITION**  
**Jomon and Kakinuma**  
Catalogue available

**ON VIEW**  
3rd - 10th November

**AT** Brian Haughton Gallery  
Second Floor, 15 Duke Street  
St James's, London SW1Y 6DB

**SPECIALISATION**  
Prehistoric to Contemporary  
Japanese art

**EXHIBITION HOURS**  
Mon-Fri 10.00-18.00  
Sat 5th 10.00-17.00  
Sun 6th 12.00-20.00

## Sydney L. Moss Ltd

35 | SEE MAP PAGE 110

**EXHIBITION**  
**Kokusai The Genius  
and Stag-antler Carving  
in Japan**  
Catalogue available

**ON VIEW**  
1st November - 20th December

**SPECIALISATION**  
Japanese netsuke, inrō and  
pipecases, classical Chinese  
painting

**EXHIBITION HOURS**  
Mon-Fri 10.00-17.30  
Sat 5th closed  
Sun 6th closed  
Mon 7th 10.00-21.00  
Sat 12th closed



Oliver Moss, Finn Daley Roberts  
12 Queen Street, Mayfair  
London W1J 5PG  
+44 (0)20 7629 4670  
pasi@slmoss.com  
www.slmoss.com

## Simon Pilling

36 | SEE MAP PAGE 109

**EXHIBITION**  
**Between Light and Shadow**  
Catalogue available

**ON VIEW**  
31st October - 11th November

**AT** Gallery 8, 8 Duke Street  
St James's, London SW1Y 6BN

**SPECIALISATION**  
Japanese works of art,  
including contemporary,  
specialising in fine lacquer

**EXHIBITION HOURS**  
Mon-Fri 10.00-18.00  
Sat 5th 11.00-17.00  
Sun 6th 11.00-21.00  
Sat 12th closed



Simon Pilling  
Business address:  
by appointment only  
PO Box 40062  
London N6 6XB  
+44 (0)7946 577 303  
simon@simonpilling.co.uk  
www.simonpilling.co.uk  
Gallery Talk (see pages 12 & 13)





Nicholas Pitcher  
29 New Bond Street  
First floor (above Halcyon Gallery)  
Mayfair, London W1S 2RL  
+44 (0)20 7499 6621  
+44 (0)7831 391 574  
nickpitcher@aol.com  
www.nickpitcher.com



## Nicholas Pitcher Oriental Art Ltd

37 | SEE MAP PAGE 110

**EXHIBITION**  
Chinese Works of Art

**ON VIEW**  
3rd - 11th November

**SPECIALISATION**  
Chinese ceramics  
and works of art

**EXHIBITION HOURS**  
Mon-Fri 10.00-17.00  
Sat 5th 10.00-17.00  
Sun 6th 10.00-17.00  
Mon 7th 10.00-20.00



David Priestley, Alice Williamson  
17 King Street, St James's  
London SW1Y 6QU  
+44 (0)20 7930 6228  
info@priestleyandferraro.com  
www.priestleyandferraro.com



## Priestley & Ferraro

38 | SEE MAP PAGE 109

**EXHIBITION**  
Chinese and Korean  
Ceramics and Works of Art  
Catalogue available

**ON VIEW**  
3rd - 11th November

**SPECIALISATION**  
Early Chinese art

**EXHIBITION HOURS**  
Mon-Fri 09.30-17.30  
Sat 5th 11.00-17.00  
Sun 6th 11.00-20.30  
Sat 12th closed

## Simon Ray

39 | SEE MAP PAGE 109

**EXHIBITION**  
Indian & Islamic Works of Art  
Catalogue available

**ON VIEW**  
1st - 30th November

**SPECIALISATION**  
Indian and Islamic works of art

**EXHIBITION HOURS**  
Mon-Fri 10.00-18.00  
Sat 5th 12.00-17.00  
Sun 6th 12.00-21.00  
Sat 12th closed



Simon Ray, Leng Tan  
William Edwards  
21 King Street, St James's  
London SW1Y 6QY  
+44 (0)20 7930 5500  
art@simonray.com  
www.simonray.com



## Röell Fine Art

40 | SEE MAP PAGE 109

**EXHIBITION**  
From Distant Shores  
Catalogue available

**ON VIEW**  
3rd - 11th November

**AT** Daniel Crouch Rare Books  
4 Bury Street, St James's  
London SW1Y 6AB

**SPECIALISATION**  
Export art from South  
and East Asia

**EXHIBITION HOURS**  
Mon-Fri 10.00-18.00  
Sat 5th 11.00-17.00  
Sun 6th 11.00-21.00  
Sat 12th closed



Guus Röell  
Business address:  
Tongersestraat 2  
6211 LN Maastricht  
The Netherlands  
+31 (0)65 32 11649  
g.roell@xs4all.nl  
www.guusroell.com



Fabio Rossi, Mauro Ribero  
27 Dover Street  
Mayfair, London W1S 4LZ  
+44 (0)20 7629 6888  
+44 (0)7597 954 270  
info@rossirossi.com  
www.rossirossi.com

## Rossi & Rossi

41 | SEE MAP PAGE 111

**EXHIBITION**  
**Classical Selection 2016**

**ON VIEW**  
3rd - 15th November

**SPECIALISATION**  
Himalayan and Indian  
art, Chinese textiles and  
contemporary Asian art

**EXHIBITION HOURS**  
Mon-Fri 10.00-18.00  
Sat 5th 11.00 - 16.00  
Sun 6th 12.00-17.00  
Mon 7th 10.00-21.00  
Sat 12th 11.00-16.00



Jacqueline Harvey  
10 Lees Place, Mayfair  
London W1K 6LL  
+44 (0)20 7499 6019  
info@galleryelenashchukina.com  
www.galleryelenashchukina.com

## Gallery Elena Shchukina

42 | SEE MAP PAGE 111

**EXHIBITION**  
**New Work by acclaimed  
Chinese painter Chen  
Jiang Hong**

**ON VIEW**  
4th November -  
12th January 2017

**SPECIALISATION**  
International contemporary art

**EXHIBITION HOURS**  
Mon-Fri 09.30-17.30  
Sat 5th 11.00-17.00  
Sun 6th closed  
Mon 7th no late night  
Sat 12th 11.00-17.00

## Jacqueline Simcox Ltd

43 | SEE MAP PAGE 109

**EXHIBITION**  
**Chinese Textiles**  
Illustrated on website

**ON VIEW**  
3rd - 12th November

**AT** Stoppenbach and Delestre  
17 Ryder Street, St James's  
London SW1Y 6PY

**SPECIALISATION**  
Chinese and Central  
Asian textiles

**EXHIBITION HOURS**  
Mon-Fri 10.00-17.30  
Sat 5th 10.00-17.00  
Sun 6th 10.00-21.00  
Sat 12th 10.00-13.00



Jacqueline Simcox  
Business address:  
By appointment only  
54 Linton Street, Islington  
London N1 7AS  
+44 (0)20 7359 8939  
+44 (0)7775 566 388  
js@jacquelinesimcox.com  
www.jacquelinesimcox.com

## Runjeet Singh

44 | SEE MAP PAGE 109

**EXHIBITION**  
**Arms and Armour  
from the East**  
Catalogue available

**ON VIEW**  
3rd - 12th November

**AT** Mackinnon Gallery, 5 Ryder St  
St James's, London SW1Y 6PY

**SPECIALISATION**  
Eastern arms and armour

**EXHIBITION HOURS**  
Mon-Fri 10.00-18.00  
Sat 5th 12.00-17.00  
Sun 6th 12.00-21.00  
Sat 12th 12.00-17.00



Runjeet Singh  
Business address:  
By appointment only  
+44 (0)7866 424 803  
info@runjeetsingh.com  
www.runjeetsingh.com





Tsumugi Shoji, Rita Bystedt  
8 Duke Street, St James's  
London SW1Y 6BN  
+44 (0)20 7930 9953  
info@grace-tsumugi.com  
www.grace-tsumugi.com



## Grace Tsumugi Fine Art Ltd

45 | SEE MAP PAGE 109

**EXHIBITION**  
**Recent Acquisitions**  
Catalogue available

**ON VIEW**  
3rd - 11th November

**SPECIALISATION**  
Japanese works of art,  
Edo, Meiji and Taishō periods

**EXHIBITION HOURS**  
Mon-Fri 10.00-18.00  
Sat 5th 12.00-17.00  
Sun 6th 12.00-17.00  
Sat 12th closed

## Jorge Welsh Works of Art

47 | SEE MAP PAGE 108

**EXHIBITION**  
**30th Anniversary Exhibition**  
**A Time and a Place:**  
**Views and Perspectives on**  
**Chinese Export Art**  
Catalogue available

**ON VIEW**  
4th - 11th November

**SPECIALISATION**  
Chinese Export porcelain,  
Japanese *namban* art and  
other cross-cultural works  
of art

**EXHIBITION HOURS**  
Mon-Fri 09.30-17.30  
Sat 5th 10.00-21.00  
Sun 6th by appointment only



Jorge Welsh  
116 Kensington Church Street  
London W8 4BH  
+44 (0)20 7229 2140  
uk@jorgewelsh.com  
www.jorgewelsh.com



Jonathan Tucker, Antonia Tozer  
37 Bury Street, St James's  
London SW1Y 6AU  
+44 (0)20 7839 3414  
+44 (0)7968 025 742  
jonathantucker1@aol.com  
antoniattozer@aol.com  
www.asianartresource.com

## Jonathan Tucker Antonia Tozer Asian Art

46 | SEE MAP PAGE 109

**EXHIBITION**  
**An Important Group of**  
**Sculptures from Gandhara,**  
**India and Southeast Asia**  
Catalogue available

**ON VIEW**  
3rd - 25th November

**SPECIALISATION**  
Indian, Southeast Asian and  
Chinese works of art, especially  
stone and bronze sculpture,  
ceramics and textiles

**EXHIBITION HOURS**  
Mon-Fri 10.00-18.00  
Sat 5th 10.00-17.00  
Sun 6th 11.00-21.00

## YEWN, the Heritage Jeweller

48 | SEE MAP PAGE 109

**EXHIBITION**  
**Continuing the Beauty of**  
**China**  
Catalogue available

**ON VIEW**  
3rd - 12th November

**AT** St James's Hotel and Club  
7-8 Park Place, St James's  
London SW1A 1LS

**SPECIALISATION**  
Contemporary  
Chinese fine jewellery

**EXHIBITION HOURS**  
Mon-Fri 10.00-18.00  
Sat 5th 12.00-18.00  
Sun 6th 12.00-21.00  
Sat 12th 12.00-18.00



Dickson Yewn  
Business address:  
Shop 208, Level Two  
The Landmark Atrium  
Central, Hong Kong  
+44 (0)7403 536 379  
(WhatsApp call) +852 9803 3303  
dickson@yewn.com  
nadia@yewn.com  
www.yewn.com



Bonhams are international auctioneers of fine Chinese and Japanese art. We specialise in rare Imperial and Export Chinese ceramics and works of art and Japanese fine and decorative arts from the 12th-20th century.

Chinese Department  
Colin Sheaf  
+44 (0)20 7468 8237  
colin.sheaf@bonhams.com

Asaph Hyman  
+44 (0)20 7468 5888  
asaph.hyman@bonhams.com

Japanese Department  
Suzannah Yip  
+44 (0)20 7468 8368  
suzannah.yip@bonhams.com

## Bonhams

49 | SEE MAP PAGE 110

101 New Bond Street, Mayfair  
London W1S 1SR  
+44 (0)20 7468 8248  
www.bonhams.com/japanese  
www.bonhams.com/chinese

### AUCTION The Julius and Arlette Katchen Collection of Fine Netsuke: Part I

Tues 8th Nov 14.00

### AUCTION Fine Chinese Art

Thurs 10th Nov 10.30

### AUCTION Fine Japanese Art

Thurs 10th Nov 13.00

**VIEWING**  
Sat 5th Nov 11.00-17.00  
Sun 6th Nov 11.00-17.00  
Mon 7th Nov 09.00-19.30  
Tue 8th Nov 09.00-16.30  
Wed 9th Nov 09.00-16.30

## Bonhams Knightsbridge

50 | SEE MAP PAGE 112

Montpelier Street, Knightsbridge  
London SW7 1HH  
+44 (0)20 7447 7447  
www.bonhams.com

### AUCTION Asian Art

Mon 7th Nov 10.30

**VIEWING**  
Fri 4th Nov 09.00-17.30  
Sat 5th Nov 11.00-17.00  
Sun 6th Nov 11.00-17.00



The department holds two specialised Asian art auctions each year, primarily comprising Chinese ceramics, works of art, textiles and paintings, but also including pieces from Japan, Korea, the Himalayas and South East Asia. In addition, we also feature several times a year in the monthly HOME & interiors sales format.

Rachel Hyman  
+44 (0)20 7393 3854  
rachel.hyman@bonhams.com

Rosa Assennato  
+44 (0)20 7393 3883  
rosa.assennato@bonhams.com

Ben Law Smith  
+44 (0)20 7393 3842  
ben.lawsmith@bonhams.com

Catalogues available from mid-October

Please note all sale times  
should be confirmed

Catalogue available from early October

Please note all sale times  
should be confirmed



Christie's has sold Asian art since its first auction in 1766. The company continues to sell the finest Asian art at its sales in London, New York, Hong Kong and Paris.

Chinese Department  
Pedram Rasti  
+44 (0)20 7389 2556  
pprasti@christies.com

## Christie's

51 | SEE MAP PAGE 109

8 King Street, St James's  
London SW1Y 6QT  
+44 (0)20 7839 9060  
www.christies.com

### AUCTION Fine Chinese Ceramics and Works of Art

Tues 8th Nov 10.30 & 14.00

#### VIEWING

Fri 4th Nov 10.00-16.30  
Sat 5th Nov 12.00-17.00  
Sun 6th Nov 12.00-20.00  
Mon 7th Nov 09.00-16.30

Catalogue available 10th October

Please note all sale times  
should be confirmed

## Christie's South Kensington

52 | SEE MAP PAGE 112

85 Old Brompton Road  
South Kensington  
London SW7 3LD  
+44 (0)20 7930 6074  
www.christies.com

### AUCTION Chinese Ceramics, Works of Art and Textiles

Wed 9th Nov 10.00 & 14.00

#### VIEWING

Sat 5th Nov 11.00-17.00  
Sun 6th Nov 11.00-17.00  
Mon 7th Nov 09.00-19.30  
Tues 8th Nov 09.00-17.00

### AUCTION Chinese Ceramics, Works of Art and Textiles

Fri 11th Nov 10.00 & 14.00

#### VIEWING

Sat 5th Nov 11.00-17.00  
Sun 6th Nov 11.00-17.00  
Mon 7th Nov 09.00-19.30  
Tues 8th Nov 09.00-17.00  
Wed 9th Nov 09.00-17.00  
Thurs 10th Nov 09.00-17.00



Christie's South Kensington holds sales of Chinese works of art and textiles, with an emphasis on imperial and export ceramics of 17th-20th century, carved jades, paintings and court textiles.

Chinese Department  
Kate Hunt  
+44 (0)20 7752 3389  
khunt@christies.com

Catalogues available mid-October

Please note all sale times  
should be confirmed



Established in Edinburgh 1826, Lyon & Turnbull is Scotland's oldest firm of auctioneers holding regular sales of Asian art, notably Chinese.

Ling Zhu  
+44 (0)131 557 8844  
ling.zhu@lyonandturnbull.com

## Lyon & Turnbull

53 | SEE MAP PAGE 112

33 Broughton Place  
Edinburgh EH1 3RR  
+44 (0)131 557 8844  
www.lyonandturnbull.com

### AUCTION Fine Asian Works of Art

Tues 8 Nov 17.00

**AT**  
Asia House  
63 New Cavendish Street  
London W1G 7LP

### VIEWING LONDON

Sat 5th Nov 12.00-17.00  
Sun 6th Nov 10.00-17.00  
Mon 7th Nov 10.00-21.00  
Tues 8th Nov 10.00-14.00

### PANEL DISCUSSION

Mon 7th Nov - 14.00  
(see page 14)

## Nagel Auktionen

54 | SEE MAP PAGE 111

Neckarstr. 189-191  
70190 Stuttgart  
Germany  
+49 (0)711 649 690  
contact@auction.de  
www.auction.de

### AUCTION Fine Asian Art I

Fri 9th Dec 09.30

### AUCTION Fine Asian Art II

Sat 10th Dec 09.30

### VIEWING LONDON

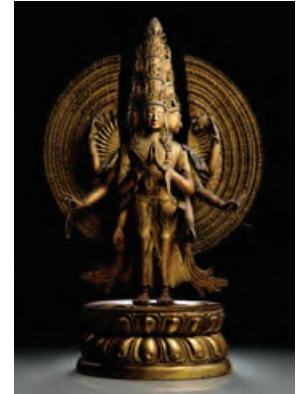
Sat 5th Nov 14.00-18.00  
Sun 6th Nov 10.00-17.00  
Mon 7th Nov 10.00-20.00  
Tues 8th Nov 10.00-14.00

### AT

The Pine Room  
The Westbury Hotel  
37 Conduit Street, London W1S 2YF

### VIEWING STUTTART

Tues 6th Dec 10.00-17.00  
Wed 7th Dec 10.00-17.00  
Thurs 8th Dec 10.00-17.00



Nagel is Germany's leading auction house for Asian art. Holding two annual special sales of Fine Asian Art since 1990, the company has succeeded in establishing itself as a globally recognised market place for Chinese, Japanese and Korean art.

Michael Trautmann  
+49 (0)711 649 69310  
trautmann@auction.de

Julia Döpfer  
+49 (0)711 649 69311  
doepfer@auction.de

Catalogue available in October

Please note all sale times  
should be confirmed

Catalogues available November

Please note all sale times  
should be confirmed



Founded in 1744, Sotheby's regularly hold auctions of Chinese ceramics and works of art in London, New York, Hong Kong and Paris.

Chinese Department  
Robert Bradlow  
+44 (0)20 7293 5145  
robert.bradlow@sothebys.com

Stephen Loakes  
+44 (0)20 7293 5171  
stephen.loakes@sothebys.com

Emily Chang  
+44 (0)20 7293 5148  
emily.chang@sothebys.com

Vivian Tong  
+44 (0)20 7293 5371  
vivian.tong@sothebys.com

Book Department  
Richard Fattorini  
+44 (0)20 7293 5301  
richard.fattorini@sothebys.com

*Catalogue available mid-October*

*Please note all sale times should be confirmed*

## Sotheby's

55 | SEE MAP PAGE 110

34-35 New Bond Street, Mayfair  
London W1A 2AA  
+44 (0)20 7293 6442  
www.sothebys.com

**AUCTION**  
**China in Print and on Paper**  
including the Library of  
Bernard Hanotiau and the  
Floyd Sully Collection

Mon 7th Nov 18.00

**VIEWING**  
Thurs 3rd Nov 09.00-16.30  
Fri 4th Nov 09.00-16.30  
Sat 5th Nov 12.00-17.00  
Sun 6th Nov 12.00-17.00  
Mon 7th Nov 09.00-11.00

**AUCTION**  
**Important Chinese Art**

Wed 9th Nov 10.00 & 14.00

**VIEWING**  
Sat 5th Nov 12.00-17.00  
Sun 6th Nov 12.00-17.00  
Mon 7th Nov 09.00-16.30  
Tues 8th Nov 09.00-16.30

**RECEPTION**  
Mon 7th Nov 18.30  
(see page 14)

## Woolley & Wallis

56 | SEE MAP PAGE 111

51-61 Castle Street  
Salisbury, Wiltshire SP1 3SU  
+44 (0)1722 424 500  
www.woolleyandwallis.co.uk

**AUCTION**  
**Asian Art I**

Tues 15th Nov 10.30

**AUCTION**  
**Asian Art II**

Wed 16th Nov 10.30

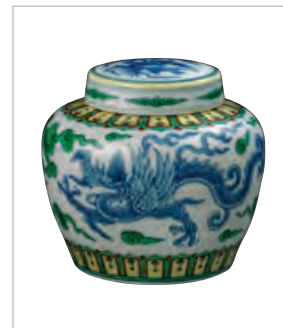
**VIEWING LONDON**  
**(HIGHLIGHTS)**

Sat 5th Nov 10.00-18.00  
Sun 6th Nov 10.00-18.00  
Mon 7th Nov 10.00-20.30  
Tues 8th Nov 10.00-18.00

**AT**  
17 Clifford Street, Second Floor,  
Mayfair, London W1S 3RQ

**VIEWING SALISBURY**

Sat 12th Nov 10.00-13.00  
Mon 14th Nov 09.00-17.30  
Tues 15th Nov 09.00-17.30  
Wed 16th Nov 09.00-17.30



Established in 1884, Woolley & Wallis hold biannual auctions of Asian Art, notably Chinese and Japanese.

John Axford  
+44 (0)1722 424 506  
+44 (0)7946 641 187  
johnaxford@woolleyandwallis.co.uk

Freya Yuan  
+44 (0)7912 677 096  
freayuan@woolleyandwallis.co.uk

*Catalogue available week beginning 24th October*

*Please note all sale times should be confirmed*



## Monday 7th November

**BONHAMS KNIGHTSBRIDGE**

10.30 Asian Art

**SOTHEBY'S**

18.00 China in Print and on Paper, including the Library of Bernard Hanotiau and the Floyd Sully Collection

## Tuesday 8th November

**BONHAMS**

14.00 The Julius and Arlette Katchen Collection of Fine Netsuke: Part I

**CHRISTIE'S KING STREET**

10.30 &amp; 14.00 Fine Chinese Ceramics and Works of Art

**LYON & TURNBULL**

17.00 Fine Asian Works of Art

## Wednesday 9th November

**SOTHEBY'S**

10.00 &amp; 14.00 Important Chinese Art

**CHRISTIE'S SOUTH KENSINGTON**

10.00 &amp; 14.00 Chinese Ceramics, Works of Art and Textiles

## Thursday 10th November

**BONHAMS**

10.30 Fine Chinese Art

13.00 Fine Japanese Art

## Friday 11th November

**CHRISTIE'S SOUTH KENSINGTON**

10.00 &amp; 14.00 Chinese Ceramics, Works of Art and Textiles

## Tuesday 15th November

**WOOLLEY & WALLIS**

10.30 Asian Art I

## Wednesday 16th November

**WOOLLEY & WALLIS**

10.30 Asian Art II

## Friday 9th December

**NAGEL AUKTIONEN**

09.30 Fine Asian Art I

## Saturday 10th December

**NAGEL AUKTIONEN**

09.30 Fine Asian Art II

## Asian Art in London Mobile App

The **Asian Art in London** guide to Asian galleries, auction houses and museums in London allows you to browse by name or category; for example: Chinese, Japanese, Korean, South Asian, Southeast Asian and Contemporary. We also list 'by appointment only' dealers who do not have permanent retail galleries.

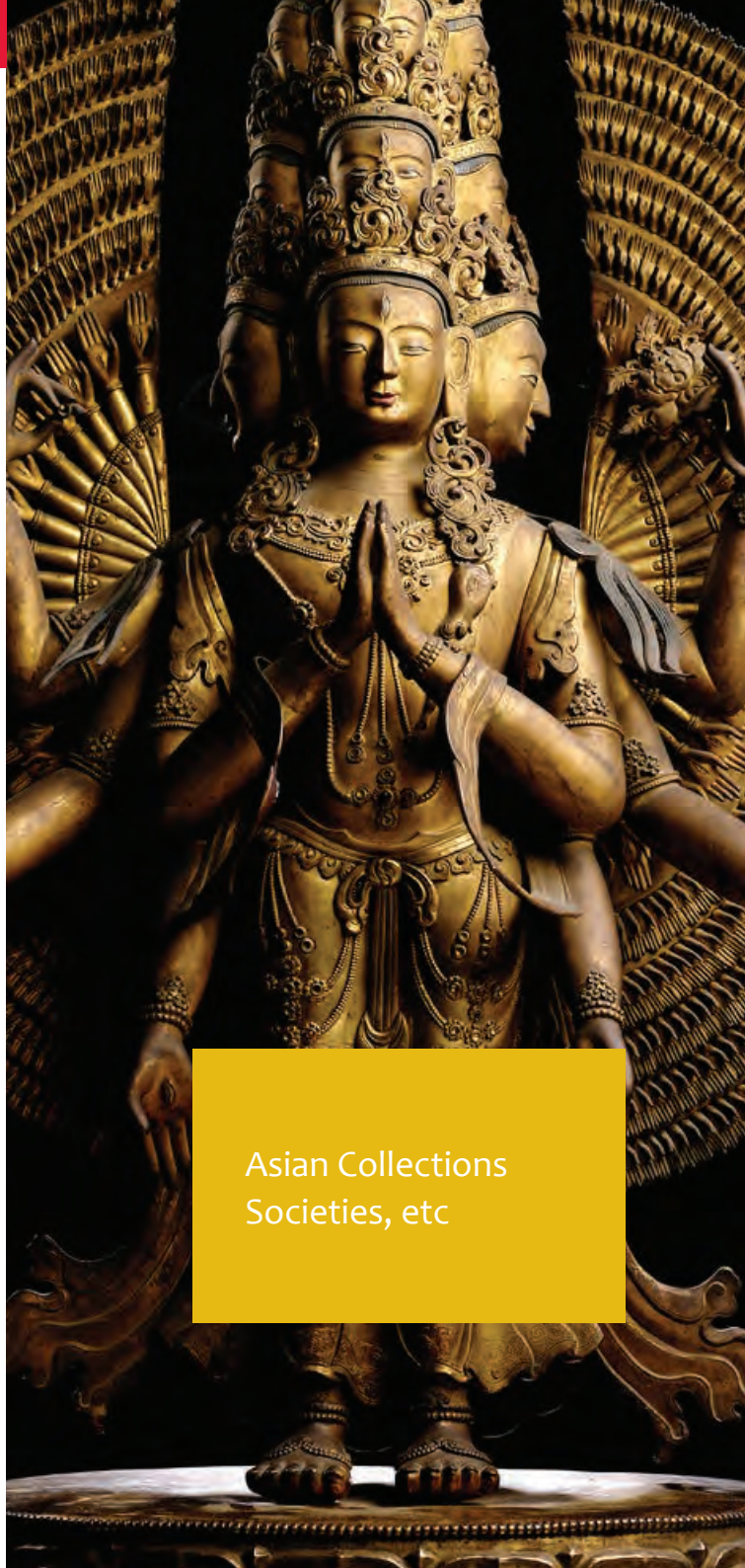
Use the built-in map to find locations of galleries, or just browse the map to see who has a gallery in your area. The gallery information also gives you a short description of the exhibitions, hours and dates from the 3rd-12th November.

Auction information includes sale information, place and times.

The app is free and can be downloaded through [www.asianartinlondon.com](http://www.asianartinlondon.com).



Asian Collections  
Societies, etc



## LONDON COLLECTIONS

**The British Library**

96 Euston Road  
London NW1 2DB  
+44 (0)843 2081144  
www.bl.uk

**The British Museum**

Great Russell Street  
London WC1B 3DG  
+44 (0)20 7323 8000  
www.britishmuseum.org

**The Fan Museum**

12 Crooms Hill  
London SE10 8ER  
+44 (0)20 8305 1441  
www.thefanmuseum.org.uk  
info@thefanmuseum.org.uk

**Horniman Museum**

100 London Road  
Forest Hill  
London SE23 3PQ  
+44 (0)20 8699 1872  
www.horniman.ac.uk  
enquiry@horniman.ac.uk

**National Maritime Museum**

Romney Road  
Greenwich  
London SE10 9NF  
+44 (0)20 8858 4422  
www.rmg.co.uk  
bookings@rmg.co.uk

**Museum of Croydon  
Riesco Collection of Chinese  
Ceramics**

Croydon Clocktower  
Katharine Street  
Croydon CR9 1ET  
+44 (0)20 8253 1022  
www.museumofcroydon.com  
museum@croydon.gov.uk

**Sir John Soane's Museum**

13 Lincoln's Inn Fields  
London WC2A 3BP  
+44 (0)20 7405 2107  
www.soane.org  
admin@soane.org.uk

**Victoria and Albert Museum**

Cromwell Road  
London SW7 2RL  
+44 (0)20 7942 2000  
www.vam.ac.uk

**The Wallace Collection**

Hertford House  
Manchester Square  
London W1U 3BN  
+44 (0)20 7563 9500  
www.wallacecollection.org  
enquiries@wallacecollection.org

## COLLECTIONS OUTSIDE LONDON

**The Ashmolean Museum**

Beaumont Street, Oxford OX1 2PH  
+44 (0)1865 278 000  
www.ashmolean.org  
eastern-art@ashmus.ox.ac.uk

**The Barlow Collection of  
Chinese Ceramics, Bronzes  
and Jades**

The Ashmolean Museum  
Beaumont Street, Oxford OX1 2PH  
+44 (0)1865 278 000  
www.ashmolean.org

**Birmingham Museum  
& Art Gallery**

Chamberlain Square  
Birmingham B3 3DH  
+44 (0)121 303 2834  
www.bmag.org.uk  
bmag\_enquiries@  
birminghammuseums.gov.uk

**Bristol Museum and Art Gallery**

Queen's Road, Bristol BS8 1RL  
+44 (0)117 922 3571  
www.bristol.gov.uk/page/leisure-  
and-culture/bristol-museum-and-  
art-gallery  
general.museum@bristol.gov.uk

**The Burrell Collection**

Pollok Country Park  
Glasgow G43 1AT  
+44 (0)141 287 2550  
www.glasgowlife.org.uk/museums  
museums@glasgowlife.org.uk

**Compton Verney House Trust**

Compton Verney  
Warwickshire CV35 9HZ  
+44 (0)1926 645 500  
www.comptonverney.org.uk  
info@comptonverney.org.uk

**The Fitzwilliam Museum**

Trumpington Street  
Cambridge CB2 1RB  
+44 (0)1223 332 900  
www.fitzmuseum.cam.ac.uk  
fitzwilliam-enquiries@lists.cam.  
ac.uk

**Maidstone Museum &  
Bentlif Art Gallery**

St Faith's Street, Maidstone  
Kent ME14 1LH  
+44 (0)1622 602 838  
www.museum.maidstone.gov.uk

**The Museum of East Asian Art**

12 Bennett Street, Bath BA1 2QJ  
+44 (0)1225 464 640  
www.meaa.org.uk  
info@meaa.org.uk

**National Museum of Scotland**

Chambers Street,  
Edinburgh EH1 1JF  
+44 (0)300 123 6789  
www.nms.ac.uk  
info@nms.ac.uk

**Oriental Museum**

University of Durham, Elvet Hill  
Off South Road, Durham DH1 3TH  
+44 (0)191 334 5694  
www.dur.ac.uk/oriental.museum  
oriental.museum@durham.ac.uk

**Pitt Rivers Museum**

University of Oxford  
South Parks Road  
Oxford OX1 3PP  
+44 (0)1865 270 927  
www.prm.ox.ac.uk  
prp@prp.ox.ac.uk

**Russell-Cotes  
Art Gallery & Museum**

Russell Cotes Road,  
Bournemouth BH1 3AA  
+44 (0)1202 451 800  
www.russell-cotes.bournemouth.  
gov.uk

**Sainsbury Centre for Visual Arts**

University of East Anglia  
Norwich NR4 7TJ  
+44 (0)1603 593 199  
www.scva.org.uk

## ASIAN SOCIETIES AND CULTURAL CENTRES

**Society of Antiquaries of London**

Burlington House, Piccadilly  
London W1J 0BE  
+44 (0)20 7479 7080  
www.sal.org.uk  
admin@sal.org.uk

**Asia House**

63 New Cavendish Street  
London W1G 7LP  
+44 (0)20 7307 5454  
www.asiahouse.org  
enquiries@asiahouse.co.uk

**The Bhavan Centre UK (Institute of Indian Art and Culture)**

4a Castletown Road  
London W14 9HE  
+44 (0)20 7381 3086/4608  
www.bhavan.net  
curator@bhavan.net

**The British Library (Friends)**

96 Euston Road  
London NW1 2DB  
+44 (0)20 7412 7734  
www.support.bl.uk  
friends@bl.uk

**British Museum (Friends)**

The British Museum  
Great Russell Street  
London WC1B 3DG  
+44 (0)20 7323 8195  
www.britishmuseum.org  
friends@britishmuseum.org

**China Exchange**

32a Gerrard Street  
London W1D 6JA  
+44 (0)20 7734 1931  
www.chinaexchange.uk  
info@chinaexchange.uk

**Chinese Arts Centre**

Market Buildings, 13  
Thomas Street  
Manchester M4 1EU  
+44 (0)161 832 7271  
www.cfcca.org.uk  
hello@cfcca.org.uk

**The Daiwa Anglo-Japanese Foundation, Japan House**

13/14 Cornwall Terrace  
London NW1 4QP  
+44 (0)20 7486 4348  
www.dajf.org.uk  
office@dajf.org.uk

**Museum of East Asian Art (Friends)**

12 Bennett Street  
Bath BA1 2QJ  
+44 (0)1225 464 640  
www.meaa.org.uk  
admin@meaa.org.uk

**The Great Britain-China Centre**

15 Belgrave Square  
London SW1X 8PS  
+44 (0)20 7235 6696  
www.gbcc.org.uk  
contact@gbcc.org.uk

**Indian Art Circle**

SOAS, University of London  
Thornhaugh Street, Russell Square  
London WC1H 0XG  
+44 (0)20 7637 2388  
www.soas.ac.uk  
indianartcircle.london@gmail.com

**International Netsuke Society**

European Chapter  
PO Box 2281, Woodford Green  
London IG7 5YP  
rosemarybandini@gmail.com  
www.euronetsuke.eu

**Iran Heritage Foundation**

Asia House  
63 New Cavendish Street,  
London W1G 7LP  
+44 (0)20 7493 4766  
info@iranheritage.org  
www.iranheritage.org

**The Iran Society**

25 Eccleston Place  
London SW1W 9NF  
+44 (0)20 7235 5122  
www.iransociety.org  
info@iransociety.org

**Islamic Art Circle (SOAS)**

Brookfields  
Swerford  
Chipping Norton  
Oxfordshire OX7 4BG  
+44 (0)1608 730 769  
rosalindhaddon@gmail.com

**The Japan Society**

13/14 Cornwall Terrace  
London NW1 4QP  
+44 (0)20 7935 0475  
www.japansociety.org.uk

**Korean Cultural Centre UK**

Ground Floor, Grand Buildings  
1-3 Strand  
London WC2N 5BW  
+44 (0)20 7004 2600  
www.london.korean-culture.org  
info@kccuk.org.uk

**The Nehru Centre**

8 South Audley Street  
London W1K 1HF  
+44 (0)20 7491 3567  
www.nehrucentre.org

**Oriental Ceramic Society**

PO Box 517  
Cambridge CB21 5BE  
+44 (0)1223 881 328  
www.ocs-london.com  
ocs.london@btinternet.com

**Oriental Museum (Friends)**

University of Durham  
Elvet Hill, Durham DH1 3TH  
+44 (0)191 334 5694  
oriental.museum@durham.ac.uk  
www.dur.ac.uk/oriental.museum/  
contact/friends

**Oriental Rug and Textile Society**

27 Drakefell Road  
London SE14 5SL  
+44 (0)20 7639 7593  
membership@  
orientalrugandtextilesociety.org.uk  
orientalrugandtextilesociety.org.uk

**Royal Asiatic Society**

14 Stephenson Way  
London NW1 2HD  
+44 (0)20 7388 4539  
www.royalasiaticsociety.org

**Royal Society for Asian Affairs**

25 Eccleston Place  
London SW1W 9NF  
+44 (0)20 7235 5122  
www.rsaa.org.uk  
info@rsaa.org.uk  
Library and archive accessible by  
prior appointment.

**Sainsbury Institute for the Study of Japanese Arts and Cultures**

64 The Close  
Norwich NR1 4DH  
+44 (0)1603 597507  
www.sainsbury-institute.org  
sisjac@sainsbury-institute.org

**School of Oriental & African Studies (SOAS)**

University of London  
Thornhaugh Street, Russell Square  
London WC1H 0XG  
+44 (0)20 7637 2388  
www.soas.ac.uk

**Victoria and Albert Museum (Friends)**

Cromwell Road  
London SW7 2RL  
+44 (0)20 7942 2271  
www.vam.ac.uk/membership  
membership@vam.ac.uk

## OTHER COLLECTIONS WHICH INCLUDE ASIAN ART

### Ascott House

Estate Office Wing  
near Leighton Buzzard  
Bedfordshire LU7 0PR  
+44 (0)1296 688 242  
[www.ascottestate.co.uk](http://www.ascottestate.co.uk)  
[info@ascottestate.co.uk](mailto:info@ascottestate.co.uk)

### Chiddingstone Castle

Hill Hoath Road  
Chiddingstone  
Near Edenbridge  
Kent TN8 7AD  
+44 (0)1892 870 347  
[www.chiddingstonecastle.org.uk](http://www.chiddingstonecastle.org.uk)

### Kedleston Hall

Quarndon, Derby  
Derbyshire DE22 5JH  
+44 (0)1332 842 191  
[www.nationaltrust.org.uk/kedleston-hall](http://www.nationaltrust.org.uk/kedleston-hall)  
[kedlestonhall@nationaltrust.org.uk](mailto:kedlestonhall@nationaltrust.org.uk)

### Powis Castle

Welshpool  
Powys  
Wales SY21 8RF  
+44 (0)1938 551 944  
[www.nationaltrust.org.uk/powis-castle](http://www.nationaltrust.org.uk/powis-castle)  
[powiscastle@nationaltrust.org.uk](mailto:powiscastle@nationaltrust.org.uk)

### Sherborne Castle

New Road  
Sherborne  
Dorset DT9 5NR  
+44 (0)1935 812 072  
[www.sherbornecastle.com](http://www.sherbornecastle.com)  
[enquiries@sherbornecastle.com](mailto:enquiries@sherbornecastle.com)

### Waddesdon Manor

Near Aylesbury  
Buckinghamshire HP18 0JH  
+44 (0)1296 653 226  
[www.waddesdon.org.uk](http://www.waddesdon.org.uk)  
[waddesdonmanor@nationaltrust.org.uk](mailto:waddesdonmanor@nationaltrust.org.uk)



Art Services

### Conservator Helen Loveday

Accredited London based conservator, specialising in the care and preservation of manuscripts, miniatures and watercolours from India and the Middle East. Materials from the 6th century onwards include paper, parchment, birch bark, palm leaf and papyrus.

19 Georgian House  
10 Bury Street, St James's  
London SW1Y 6AA  
+44 (0)20 7930 0180  
helenlovedayconservation@btinternet.com

### Lacey West Art International (LWAI) Recruitment for the Art World

Lacey West Art International (LWAI) offers a professional recruitment service for all art-related businesses in the UK and around the world. Whether you have a role to fill, or are looking for a new position, we can help. LWAI finds and places candidates for temporary and permanent roles and also offers discreet and effective executive search services.

Henry Wood House  
2 Riding House Street  
London W1W 7FA  
+44 (0)7956 555 301  
+44 (0)208 265 9389  
info@laceywestartintl.com  
www.laceywestartintl.com

### Designer Ben Gibbs - Motion Design

Graphic design company experienced in design, branding and communications for luxury and prestige markets.

+44 (0) 20 7193 3012  
+44 (0)7786 933800  
ben@motionltd.com  
www.motionltd.com



Sponsors,  
Partners and  
Advertising

## Reduce risk on your overseas currency transfers

Buying and selling fine art and antiques from around the world? Plan ahead with AFEX

Whether you're buying or selling a profitable art piece, arranging an exhibition, or paying for storage abroad AFEX can assist you in managing your overseas transfers so you're better protected from the adverse effects of the foreign exchange market.

We've been helping our clients manage their overseas payments since 1979 and work with many fine art & antiques dealers, to ensure they achieve the most profitable and risk adverse outcome.

To learn more, please call +44 (0)207 004 3807 or visit [afex.com](http://afex.com).



© 2016 Associated Foreign Exchange, Inc. All rights reserved.

Associated Foreign Exchange Limited, which does business under the trade name of AFEX (registered in England and Wales, Company Number 4848033, Registered Office Address: 4th Floor, 40 Strand, London WC2N 5RW), is authorised by the Financial Conduct Authority under the Payment Services Regulations 2009 (Register Reference: 502593) for the provision of payment services and is registered as an MSB with HM Revenue & Customs (Registered No: 12159000). All clients must have a fully completed and approved application and other necessary documentation on file with AFEX, including a list of authorised traders, if applicable, to initiate valid and legally binding funds transfers orders and other orders and instructions (including cancellations and amendments) (collectively 'Order') on client's behalf. For more information, visit [www.afex.com](http://www.afex.com).



Over 90 years of Apollo



One of the world's most respected visual arts magazines



Covering everything from antiquities to contemporary work



[www.apollo-magazine.com](http://www.apollo-magazine.com)



ANTIQUES TRADE  
**gazette**  
 THE ART MARKET WEEKLY

Your essential read for  
 all things art and antiques

Every week, the Gazette brings you a time saving round up of the news, insider tips, in-depth market analysis and details of all the important auctions, fairs and markets taking place across the world.



To subscribe simply:  
 Call our friendly team on +44 (0) 20 3725 5507  
 Visit our website: [antiquetrade gazette.com/subscribe](http://antiquetrade gazette.com/subscribe)



MAKING A DIFFERENCE



**DORSETT**  
 HOSPITALITY  
 INTERNATIONAL

Discover a new kind of hospitality. Dorsett's collection of modern hotels in key international cities offer business and leisure travellers memorable stays infused with contemporary comforts and eclectic energy.

Dorsett – Making a difference in exciting new ways.

[www.dorsett.com](http://www.dorsett.com)





THE ULTIMATE  
CUVÉE ROSÉ

—

CHAMPAGNE

**Laurent-Perrier**

MAISON FONDÉE  
1812

Chosen by  
*Michel Roux at Le Gavroche.*



Photo credit: Les Veignes / Illustration credit: Alice Drapeau

[drinkaware.co.uk](http://drinkaware.co.uk)  
for the facts

*Preferred*<sup>TM</sup>  
HOTELS & RESORTS



*Hotel Regina, Paris*

## Preferred Hotels & Resorts is delighted to be a partner of Asian Art in London 2016

The World's largest independent hotel brand, Preferred Hotels & Resorts represents more than 650 distinctive hotels, resorts and residences across 85 countries. With locations ranging from Bangkok to Paris, and Hong Kong to Amsterdam, you can be assured that Preferred Hotels & Resorts will exceed your travel requirements.



*The Siam, Bangkok*



*The Franklin Hotel, London*



*Pulitzer Amsterdam*



*The Upper House, Hong Kong*

Visit [PreferredHotels.com](http://PreferredHotels.com) or call 00800 7123 1030

# Preferred Hotels & Resorts

# Competition



East Meets



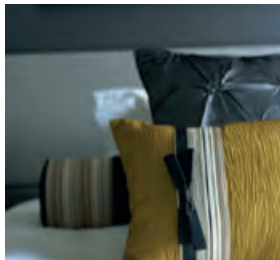
West

## Preferred Hotels & Resorts In Tokyo

*Preferred Hotels & Resorts is delighted to present Hotel New Otani Tokyo, EXECUTIVE HOUSE ZEN, as one of two exciting prizes for Asian Art in London.*

Situated in the heart of the city, Hotel New Otani Tokyo in Chiyoda Ward boasts about 1,500 guest rooms over three accommodation types and a history, of the Japanese Garden onsite, spanning more than 400 years. Enjoy a traditional Japanese tea ceremony at Seiseian Room followed by a short walk in the 10acre Japanese Garden, providing a truly authentic Japanese experience. Discover the Japanese arts and culture at either the Mori Art Museum or the Nezu Museum.

You and your guest will receive four nights of luxury at Hotel New Otani Tokyo, EXECUTIVE HOUSE ZEN in a Deluxe Room, including daily breakfast, a Japanese tea ceremony and access to the Golden Spa, Gym and Pool throughout your stay.



## Preferred Hotels & Resorts In Vienna

*Hotel Sans Souci, Vienna is one of two exciting prizes for Asian Art in London.*

Centrally situated in the cultural heart of Vienna, and within short walking distance of one of the world's biggest artistic quarters, MuseumsQuartier, the exquisite Hotel Sans Souci is surrounded by art, culture and history. Take in a performance at the Vienna State Opera or watch Lipizzaner stallions, the ultimate display in equestrian elegance at the Winter Riding School. The hotel itself features one of the greatest pop art collections around including pieces by Roy Liechtenstein, Allen Jones and many more.

You and your guest will receive four nights of luxury in a Junior Suite, including daily breakfast, one five-course dinner and Spa treatments.

*Photos by Gregor Titze*



To enter, visit [PreferredHotels.com/asianart](http://PreferredHotels.com/asianart)

Terms & Conditions apply

*Preferred*  
HOTELS & RESORTS

A Special Exhibition from the Stephan  
Loewentheil Historical Photography of China  
Collection at the China Exchange

沪风旧影·英国摄影师威廉·桑德斯眼中的晚清上海

*The First Exhibition of Late Qing Dynasty  
Photographs of Shanghai by William Saunders*



*Life in Qing Dynasty Shanghai:  
The Photographs of William Saunders*

*Curated by Stacey Lambrow*

**4 NOVEMBER - 12 NOVEMBER**

*Talks & Panel Discussions on 4 & 10 November*

The largest and finest collection of  
historical photography of China in private hands.

*Available for scholarship and exhibitions.*

*19th Century Rare Book & Photograph Shop*

446 Kent Avenue PH-A, Brooklyn, NY 11249 USA

(347) 529-4534 | china@19thshop.com | www.19thshop.com

In London's Chinatown  
at the *China Exchange*

32A Gerrard Street, London +44 20 7734 1931

CHINA  
EXCHANGE  
中國站

Collecting Contemporary Art  
Saturday 8 Oct 2016  
See website for more details

MASTER CLASS  
**ULI SIGG**



PORCELAIN FILM SCREENING

**MR SEA**

by Artist Xue Geng

4 - 13 Nov

See website for opening times

Free admission

Image courtesy of Beautiful Asset Art Project

**The Art of Poetry on  
Chinese Ceramics**

Saturday 18 Nov 2016

3pm - 5pm

Ticket from £14

Lecturer: Yu-ping Luk

Curator of V&A Museum

Image courtesy of V&A Museum

**WORDS IN CLAY**

LECTURE

CHINA  
EXCHANGE  
中國站

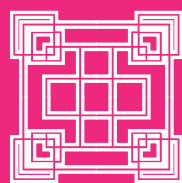
EXHIBITIONS | LECTURES | TALKS | PERFORMANCE | EVENTS

32A Gerrard St W1D 6JA London T +44 (0) 20 7734 1931

www.chinaexchange.uk



Presenting Asian Art in Hong Kong



ASIA WEEK  
HONG KONG

香港亞洲藝術週

from Antiquities to Contemporary

Celebrating 5th Anniversary  
ASIA WEEK HONG KONG

May - June 2017



 artasiapacific

**News Cultural Currency**  
**Five Plus One Country**  
**Reports Festivals**  
**Exhibitions Books**

[www.artasiapacific.com](http://www.artasiapacific.com)

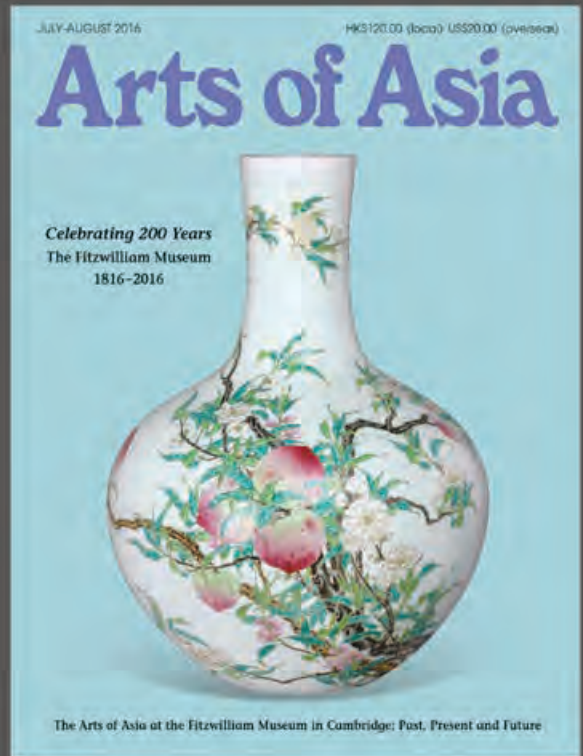
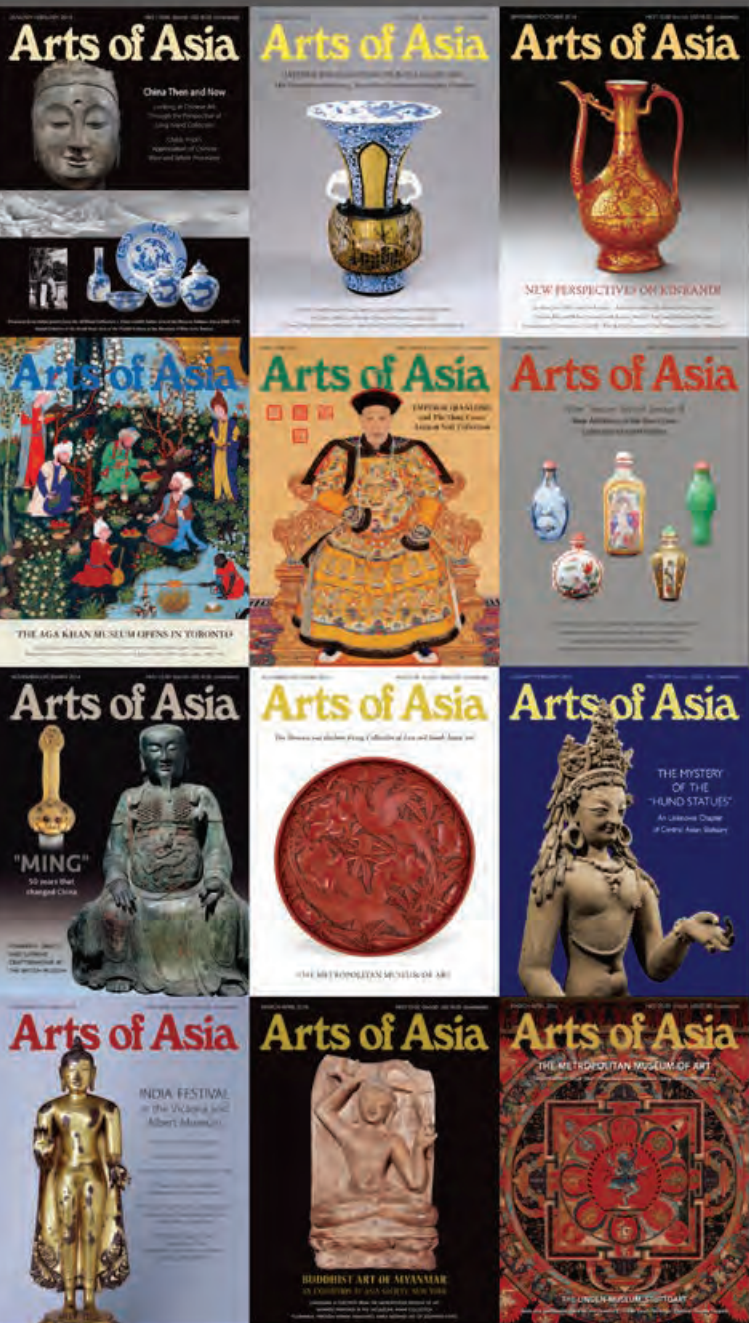
Asia Week Hong Kong takes place annually and collaborates with leading Asian art dealers, galleries, auction houses, museums, cultural institutions and collectors societies in Hong Kong. Presenting Asian art in Hong Kong with selling gallery exhibitions, auctions, receptions, collectors dinners, lectures and seminars from renowned museum curators and scholars.

Join us!

[www.asiaweekhk.com](http://www.asiaweekhk.com) | [info@asiaweekhk.com](mailto:info@asiaweekhk.com)

 [香港亞洲藝術週](https://www.facebook.com/asiaweekhk)  [Asia Week Hong Kong/asiaweekhk](https://www.instagram.com/asiaweekhk) |  [asiaweekhk](https://twitter.com/asiaweekhk)

*The Foremost International  
Asian Arts and Antiques Magazine*



Arts of Asia, founded in 1970, is the foremost international Asian arts and antiques magazine. Every edition is treasured by collectors, dealers, museums and galleries and is essential reading for enhancing and enriching your knowledge of Asian art.

Lavishly illustrated articles by the world's leading experts and scholars are carefully prepared and printed on the finest quality Japanese paper. The publication also provides an invaluable source of information on Asian art news and trends, including current reports on gallery and museum exhibitions, auctions and fairs.

Arts of Asia is a wonderful resource for those interested in Asian art, antiques and culture. The annual subscription cost for six beautiful issues is US\$110 inclusive of surface mail delivery.

For airmail delivery to America and Europe add US\$70.

Please visit [www.artsofasia.com](http://www.artsofasia.com) for more information, editorial archives, back issues purchase, and links to the best Asian art websites.

[www.artsofasia.com](http://www.artsofasia.com)

16B Tesbury Centre, 28 Queen's Road East, Wanchai, Hong Kong

T: 852-2376-2228 F: 852-2376-3713 E: [info@artsofasia.com](mailto:info@artsofasia.com)

*The*  
authoritative  
voice of the  
international  
art world

50 journalists, 30 countries,  
25 years' expertise, 5 sister editions  
*One source...*

  
**THE ART NEWSPAPER**

Subscribe today

**JOIN THE  
WORLD'S  
LEADING  
GALLERY  
NETWORK**

Learn more and apply at  
[artnet.com/gallery-network](http://artnet.com/gallery-network)

**artnet**<sup>®</sup>

# ASIAN ART

THE NEWSPAPER FOR COLLECTORS, DEALERS, MUSEUMS AND GALLERIES

Keep up to date with the  
Asian and Islamic Art Worlds



with our print and  
digital editions

From the ancient to contemporary, Asian Art Newspaper offers you a snapshot of what's happening in the world of Asian and Islamic art around the globe.

Each month there's our news section, an interview with a prominent or emerging artist, special features, as well reviews of major exhibitions, auctions, art and antiques fairs and events. We also include the performing arts, film and books to link the past with the future.

*And keep your eyes peeled for Asian Art At Desko,  
a monthly art-themed read to enliven your lunch break -  
across all our social media platforms*



facebook.com/AsianArtNewspaper



twitter.com/Asianartpaper



www.asianartnewspaper.com

**asianartnewspaper.com**



Save 25% on a print subscription email: [info@asianartnewspaper.com](mailto:info@asianartnewspaper.com), quoting AAL2016

Print Subscriptions UK £45, Rest of Europe £50, Rest of World £55 (US\$90).  
A digital only annual subscription is just £30 (US\$48).

*We share our love  
of Art with you*

典藏

ART&COLLECTION  
ARTCO CHINA



典藏藝術家庭

Art & Collection Group

台灣台北市中山北路一段85號6樓  
6F No. 85, Sec. 1, Zhongshan N. Rd.,  
Taipei Taiwan 104, R.O.C.  
Website: [artouch.com](http://artouch.com)

訂閱與查詢

Enquiries & Subscription

Tel 886-2-25602220#319#300

Fax 886-2-25420631

E-mail [issue@artouch.com](mailto:issue@artouch.com)

北京辦事處 Beijing Office

Tel 86-10-58264541

上海辦事處 Shanghai Office

Tel 86-21-64046976

南京辦事處 Nanjing Office

Tel 86-25 52303628

[www.artouch.com](http://www.artouch.com)

WeChat ID: [artouch\\_cn](https://www.artouch.com)

CANS 藝術新聞

痕都斯 五週年紀念  
蘇富比拍賣  
2016年4月6日  
香港會議展覽中心展覽廳5

Sotheby's | 蘇富比

蘇富比  
御翫凝芳 — 重要鑑賞收藏

香港拍賣2016年4月6日  
香港會議展覽中心展覽廳5

展覽  
3月19日至20日  
華商銀行總行會議中心  
台北市信義區信口路125號2樓

4月1日至5日  
香港會議展覽中心

Chinese Art Book Co Ltd was founded in 1997 in Taiwan and currently has three editorial offices in Taipei, Shanghai and Beijing.

Chinese Art Books Publishing is a well-known professional publisher of art magazines in Greater China. We aim to develop contemporary art, ancient and classical art, tea culture and art auctions through our 4 publications: Chinese Art News (CANS), Chinese Contemporary Art News, Tea Magazine and the Annual Chinese Arts Auction Records.

For any advertising or purchasing enquiry, please contact :

台北 Taipei  
台北市大安區麗水街9號  
No. 9, Li Shui St., Da-an District,  
Taipei, Taiwan  
Tel: 886-2-2321-5201 Fax: 886-2-2321-5202  
cans@cansart.com.tw

北京 Beijing  
北京市朝陽區酒仙橋路2號798藝術區  
798中二街 (100015)  
CANS Teahouse, 798 middle second  
Street, Sec. D-06, 798 Art District, #2  
Jiuxianqiao Rd. Chaoyang District,  
Beijing China 100015  
Tel: 8610-59789803 Fax: 8610-59789804  
e-mail: Ecans@ecans.com

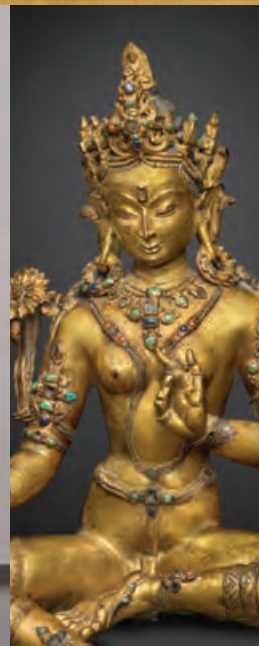
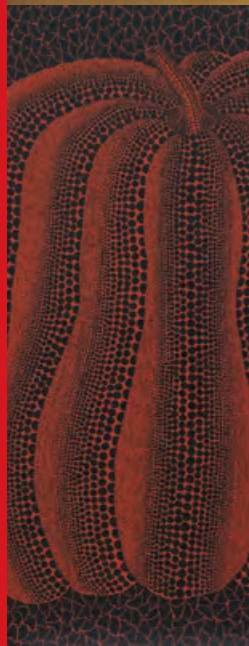
上海 Shanghai  
上海市普陀區真手山路50號3號樓105-2室  
郵編: 200060  
Room 105-2, Building No.3-1, No.50,  
Moganshan Rd, Shanghai 200060, China  
Tel: 86-21-62763226 Fax: 86-21-62763225

# FINE ART ASIA

## 典亞藝博

### 2016

ASIA'S LEADING INTERNATIONAL FINE ART FAIR



2-5 OCT | 2016  
Hong Kong Convention  
and Exhibition Centre | Hall 5BC

[www.fineartasia.com](http://www.fineartasia.com)





THE  
LONDON  
LIBRARY

**175 Years of History  
One Million Books  
Unlimited Inspiration**

---

**Book Launch**

**Friday 4<sup>th</sup> November 2016**

**6:30pm – 8:30pm**

**The London Library**

*Bringing Heaven to Earth: Silver Jewellery  
and Ornament in the Late Qing Dynasty*

by Elizabeth Herridge

Enquiries | [rsvp@londonlibrary.co.uk](mailto:rsvp@londonlibrary.co.uk)

*Bringing Heaven to Earth:  
Silver Jewellery and Ornament  
in the Late Qing Dynasty*

by Elizabeth Herridge



*A unique publication in a little known area  
of the Chinese decorative arts*

[IanthePress.com](http://IanthePress.com)

Proud to support  
Asian Art in London 2016

[londonlibrary.co.uk](http://londonlibrary.co.uk)



**ELIZABETH HERRIDGE**

[Elizabeth-Herridge.com](http://Elizabeth-Herridge.com)

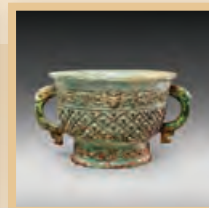
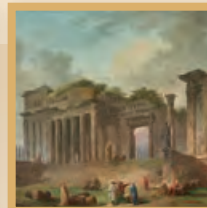
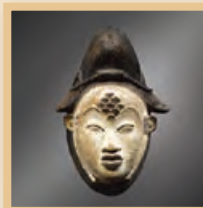
# Get the essential resource for Asian textile art with the HALI Archive.

Launched in January 2016, HALI subscribers get full digital access to the HALI Archive

Every HALI since 1978

For only £60/€88/\$120, subscribers receive four printed issues of HALI a year and fully searchable access to over 186 editions

[www.hali.com](http://www.hali.com)



## International Antiques Fair

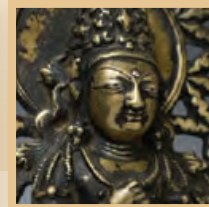
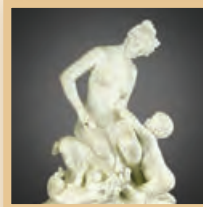
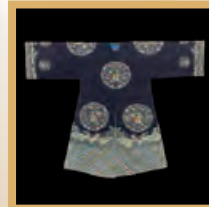
---

## 國際古玩展

《 May 2017 》

[www.iaf.com.hk](http://www.iaf.com.hk)

*Quality and Excellence  
in Oriental and Western Antiques*



# MASTERART

COLLECT FROM THE FINEST



**A Five-Coloured Double Gourd Vase**  
Transitional period, circa 1640, 46 cm height

SEARCH NOW OVER 15,000 WORKS OF ART  
FROM THE WORLD'S LEADING ART DEALERS  
[WWW.MASTERART.COM](http://WWW.MASTERART.COM)

## HUSAIN'S RAJ

### Visions of Empire and Nation

by Sumathi Ramaswamy

A narrative of M.F. Husain's *Raj Series* that  
produced playful vignettes of  
British rule in India



June 2016

List Price: ₹2800 / \$69.95 / £35 | Hardcover 305 x 241 mm  
ISBN: 978-93-83243-13-6 | 144 pages 142 illustrations

For copies of the book contact:

Representation: UK, Ireland, & Europe  
GLOBAL BOOK SALES LIMITED, UK  
David Wightman

T: 0044-7963210830 E: [david@globalbooksales.co.uk](mailto:david@globalbooksales.co.uk)



The Marg Foundation, India, Sales & Marketing Department  
T: 0091-22-22842520 E: [margfound@vsnl.net](mailto:margfound@vsnl.net) [www.marg-art.org](http://www.marg-art.org)

# ORIENTATIONS

The magazine for collectors and connoisseurs of Asian art



Subscribe for one year  
£84/€106/US\$137  
for UK/Europe/USA  
& elsewhere (airmail)

PAYMENT CAN BE MADE BY PERSONAL CHEQUE  
OR AMEX, VISA OR MASTERCARD TO:

Orientations Magazine Ltd  
816, 8th Floor, Zung Fu Industrial Bldg,  
1067 King's Road, Quarry Bay, Hong Kong  
T: +852 2511 1368 F: +852 2507 4620  
info@orientations.com.hk

Visit the secure *Orientations* website [www.orientations.com.hk](http://www.orientations.com.hk)

31 October - 6 November 2016

## WINTER ART & ANTIQUES FAIR OLYMPIA



30,000 pieces  
Hand-picked, stylish & eclectic  
Unrivalled choice

For details & tickets visit [www.olympia-antiques.com](http://www.olympia-antiques.com)

20TH CENTURY & CONTEMPORARY ART AND DESIGN ANTIQUITIES LIGHTING  
PHOTOGRAPHY 20TH CENTURY FURNITURE ISLAMIC & ASIAN WORKS OF ART  
NATURAL HISTORY ARMS & ARMOUR BOOKS EPHEMERA BRITISH PICTURES CARPETS  
RUGS CERAMICS CLOCKS WATCHES GLASS JEWELLERY MAPS CONTINENTAL  
FURNITURE ENGLISH FURNITURE EUROPEAN PICTURES SILVER SCULPTURE  
TEXTILES SPORTING ARTIFACTS CHINESE WORKS OF ART MUSICAL INSTRUMENTS

Olympia London, Hammersmith Road, Kensington, London W14 8UX



# Re.S.Artes

Review of Science on Art and Cultural Heritage

Scientific investigations  
on all works of Art by...

Analyzing

Dating



Imaging



For more information

[www.res-artes.com](http://www.res-artes.com)

[info@res-artes.com](mailto:info@res-artes.com)

Tel: +33 5 56 81 64 42



Classic



Modern



Unique

The most influential art magazine for collectors  
in Spanish language

# *Tendencias*

del Mercado del Arte

Phone (34) 91 541 88 93

Website: [www.tendenciasdelarte.com](http://www.tendenciasdelarte.com)

E-mail: [tendenciasdelmercado@gmail.com](mailto:tendenciasdelmercado@gmail.com)



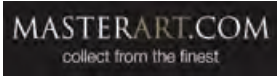
SPONSORS



HOTEL PARTNERS



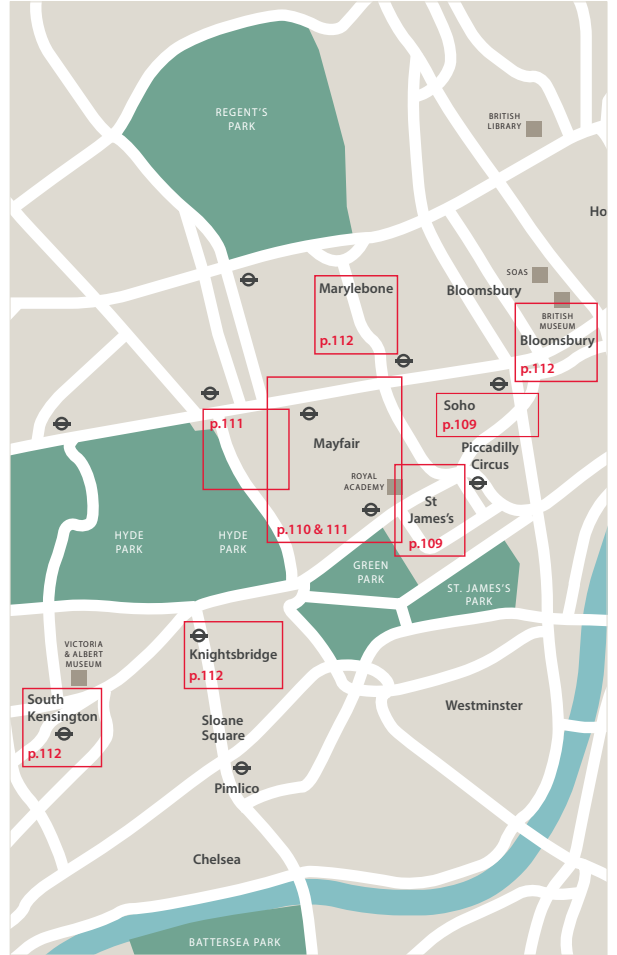
MEDIA PARTNERS



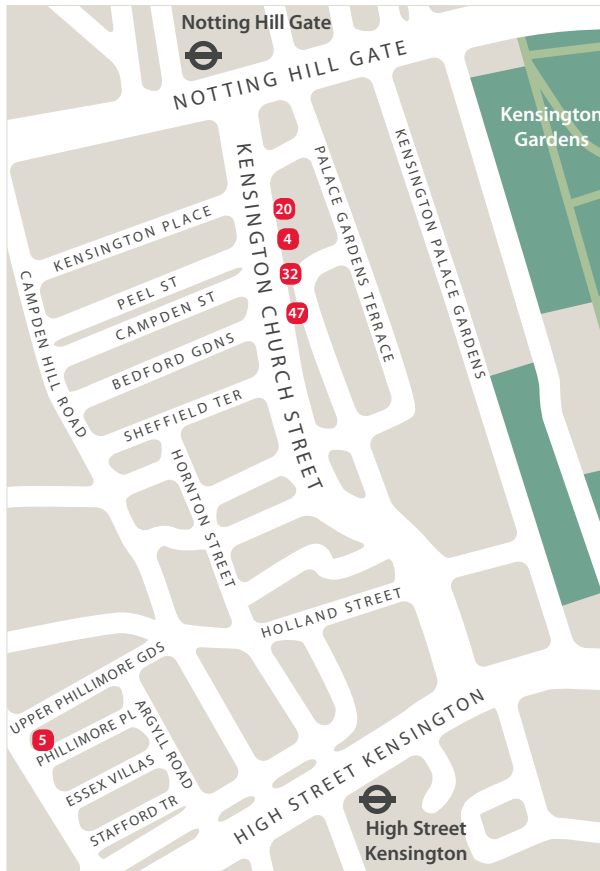
OTHER PARTNERS



Maps



## Kensington Church Street



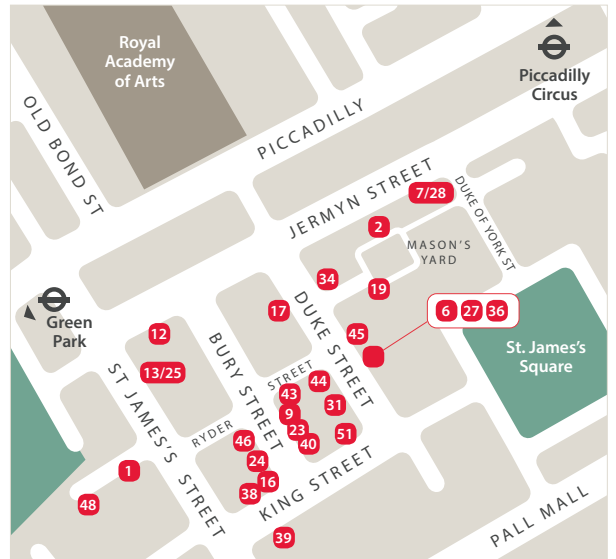
Kensington Church Street late night opening,  
Saturday 5th November, 17.00-21.00

- 4 Gregg Baker Asian Art
- 5 Kamal Bakhshi Modern Asian Art (no late opening/appointment only)
- 20 Fleurdelys Antiquités (no late opening)
- 32 Marchant
- 47 Jorge Welsh Works of Art



Soho (above) St James's (below)

China Exchange



St James's late night opening, Sunday 6th November, 17.00-21.00

- |   |   |
|---|---|
| 1 Aktis Gallery                                   | 28 Ben Janssens Oriental Art Ltd                |
| 2 Raquelle Azran Vietnamese Art (no late opening) | 31 Littleton & Hennessy                         |
| 6 Rosemary Bandini                                | 34 Mika Gallery / Shouun Oriental Art           |
| 7 Joost van den Bergh                             | 36 Simon Pilling                                |
| 9 Brandt Asian Art                                | 38 Priestley & Ferraro                          |
| 12 Cohen & Cohen                                  | 39 Simon Ray                                    |
| 13 Rob Dean Art                                   | 40 Röell Fine Art                               |
| 16 Malcolm Fairley Ltd (no late opening)          | 43 Jacqueline Simcox Ltd                        |
| 17 Peter Finer                                    | 44 Runjeet Singh                                |
| 19 MD Flacks                                      | 45 Grace Tsumugi Fine Art Ltd (no late opening) |
| 23 Genrokuart                                     | 46 Jonathan Tucker Antonia Tozer Asian Art      |
| 24 Nicholas Grindley (no late opening)            | 48 YEWN, the Heritage Jeweller                  |
| 25 Grosvenor Gallery                              | 51 Christie's                                   |
| 27 Hanga Ten                                      |   |



## Mayfair



Mayfair late night opening,  
Monday 7th November, 17.00-21.00

## MAP ABOVE

- 3** David Baker Oriental Art Ltd
- 35** Sydney L. Moss Ltd
- 37** Nicholas Pitcher Oriental Art Ltd
- 49** Bonhams
- 55** Sotheby's

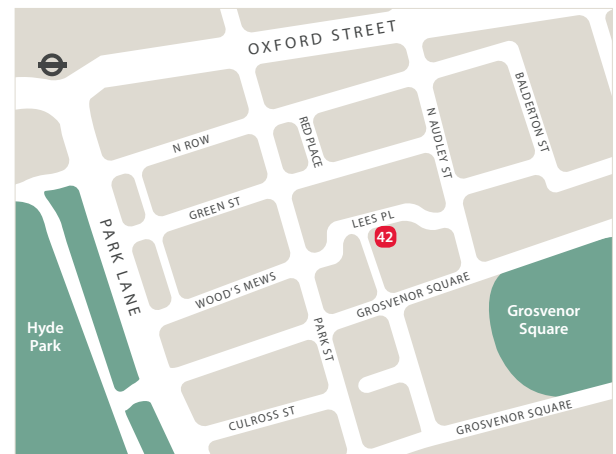
## BOTH MAPS OPPOSITE

- 8** Berwald Oriental Art
- 10** Brun Fine Art
- 11** Prahlad Bubbar
- 14** Eskenazi Ltd
- 21** Sam Fogg
- 22** Francesca Galloway
- 29** Jhaveri Contemporary
- 30** Roger Keverne Ltd (no late opening)
- 33** Mayor Gallery
- 41** Rossi & Rossi
- 42** Gallery Elena Shchukina
- 54** Nagel Auktionien (Westbury Hotel)
- 56** Woolley & Wallis

## Mayfair detail



## Mayfair/Hyde Park

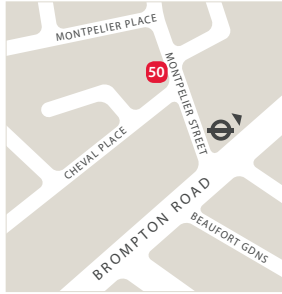


South Kensington



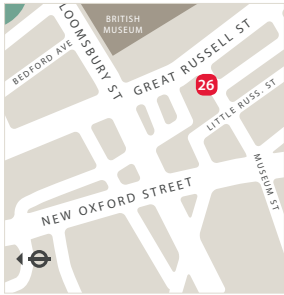
52 Christie's South Kensington

Knightsbridge



50 Bonhams Knightsbridge

Bloomsbury

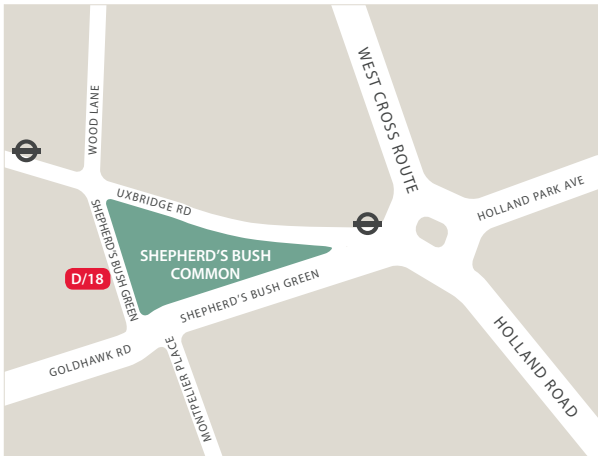


26 Han Collection

Marylebone



53 Lyon & Turnbull



D Dorsett Shepherd's Bush

18 Fitzgerald Fine Arts

Gregg Baker Director  
 Robert Bradlow Director  
 Asaph Hyman Director  
 Conor Macklin Director  
 Jacqueline Simcox Director  
 Antonia Tozer Director  
 Leila de Vos van Steenwijk Director

Associate Director: Daniel Eskenazi

Roger Keverne Chairman  
 Virginia Sykes-Wright Executive Director  
 Sarah Harcourt-Webster Admin Coordinator



Asian Art in London  
+44 (0)20 7830 9788  
[info@asianartinlondon.com](mailto:info@asianartinlondon.com)  
[www.asianartinlondon.com](http://www.asianartinlondon.com)