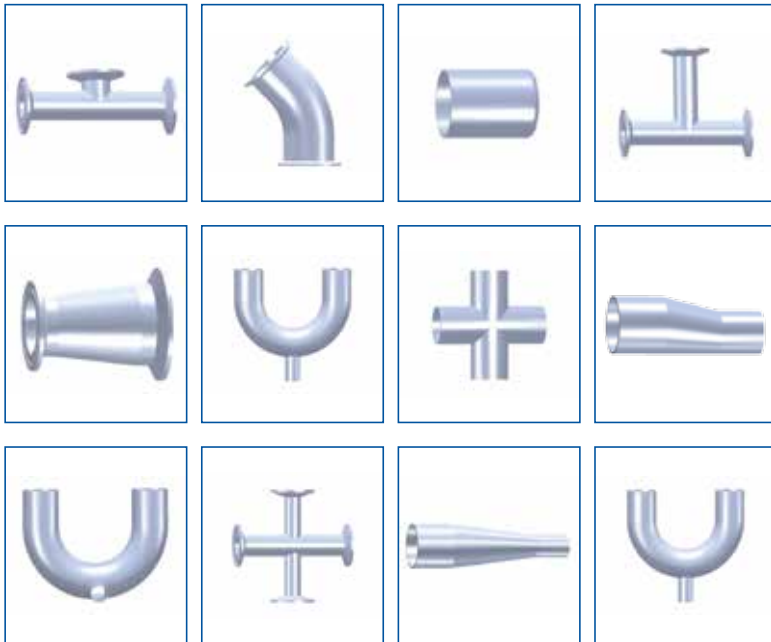




ASME BPE - Tubes and Fittings



Mastering Purity



## Hygienic Equipment for Food & Life Sciences

Gillain & Co Gillain & Co is a leading supplier to all companies in need of high or ultra-high purity.

- End users
  - pharma, cosmetics and chemicals
  - fine chemicals and biotechnology
  - food and dairy
  - breweries and drink producers
  - photovoltaics and semiconductors
- OEM (Original equipment manufacturers)
- Piping and installation companies
- Tank builders
- Engineering contractors
- Maintenance, repair and overhaul companies

**Gillain & Co sa**  
Boomsesteenweg 85  
2630 Aartselaar  
België

T +32 3 870 60 80  
F +32 3 870 60 89

[advice@gillain.com](mailto:advice@gillain.com)  
[www.gillain.com](http://www.gillain.com)



## A Complete ASME BPE Product Range for the Life Sciences Industry



**Gillain & Co**  
HYGIENIC EQUIPMENT FOR FOOD & LIFE SCIENCES

About Gillain & Co	p. 4
Acceptance criteria	p. 5
Surface finishes	p. 5
Tubes	p. 6-7
Overview fittings	p. 8-9
Weld type	p. 10-17
Clamp to weld type	p. 18-25
Clamp type	p. 26-32
Gillain & Co, more than a century of experience in high and ultra-high purity industries	p. 35



**Gillain & Co**  
HYGIENIC EQUIPMENT FOR FOOD & LIFE SCIENCES

## Hygiene - our second nature

Gillain & Co is a specialist supplier of hygienic equipment and components for the food and life sciences industries. Gillain & Co offers safe and certified materials that are essential to these very demanding markets and complex production processes. We always listen to the customers' specific needs and, thanks to our expertise, we are able to propose winning solutions.

### We stay tuned

The secret of Gillain & Co's success lies in continuously monitoring global market developments and latest technologies and adapting our product assortment if we see that this would be of benefit to our customers. This approach ensures that our customers receive a greater degree of quality and safety, thus improving their cost efficiency.

### 135 years of trust and expertise

Over more than a century, Gillain & Co has built a reputation for credibility, trust and expertise in the high and ultra-high purity markets. We are the preferential supplier of an extended number of large companies in the following markets:

- Pharma, cosmetics and chemical
- Fine chemicals and biotechnology
- Food and dairy
- Breweries and beverage producers
- Photovoltaics and semiconductors

## Enhanced product offer

Gillain & Co supplies hygienic equipment and stainless steel components that fit each step of the production cycle:

- **Flow equipment**  
Pipeline components, fittings. Tubes for transporting liquids or gases.
- **Process equipment**  
Process components for the treatment of liquids or gases.
- **Pre-engineered solutions**
- **Spare parts**

# ASME BPE (Bio Processing Equipment) Specifications

**ASME BPE  
2009**

**Design requirements:** automatic welding, ovality, wall thickness, squareness.

**Traceability** (indelibly marked): heat number, size, grade, surface finish, material, job number.

**Test reports available.**

**Packaging:** color-coded end caps, transparant plastic bag, detailed label.

## Ra readings (Surface Roughness)

Ra readings are mesured according to the standard methods. Other Ra readings are available if agreed upon. For more information, please contact us at +32 (0)3 870 60 80 or send an e-mail to [advice@gillain.com](mailto:advice@gillain.com)

## Surface Finishes

Polish Combination Code	INTERNAL SURFACE (ID)		Surface Finish	EXTERNAL SURFACE (OD)		ASME BPE indication de l'état de surface	
	Max. Surface Roughness			Max. Surface Roughness			
	μ-in	μ-m	μ-in	μ-m			
3/PC	20	0.5	Mechanical Polish			Unpolished	SF1
7/PL	20	0.5	Mechanical Polish	32	0.8	Mechanical Polish	SF1
3/PD	15	0.375	Mechanical Polish & Electropolish			Unpolished	SF4
7/PM	15	0.375	Mechanical Polish & Electropolish	32	0.8	Mechanical Polish	SF4

## Conversion of Surface Finishes Chart

Standard Grit	Ra		RMS	
	μ-in	μ-m	μ-in	μ-m
150 grit	27-32	0.68-0.80	30-35	0.76-0.89
180 grit	18-23	0.46-0.58	20-25	0.51-0.64
240 grit	14-18	0.34-0.46	15-20	0.38-0.51
320 grit	8-10	0.21-0.25	9-11	0.23-0.28



## Stainless Steel Tubes, deliverable from stock

High and ultra-high industries require absolutely hygienic conditions during the entire production cycle. Therefore they use in their installations exclusively tubes, fittings and valves with a smooth internal surface that is not only easy to clean, but it also avoids development of bacteria. In addition it allows - in SF4 finish - the production of WFI (water for injection). Gillain & Co only offers tubes that are manufactured, quality controlled, marked and certified according to the highest standards for hygienic equipment design and guarantees extended quality and traceability.

Gillain & Co delivers directly from stock the following stainless steel tubes in grade 316L - with low sulfur content of 0.005 - 0.017% - and SF1 and SF4 finishes (according to the ASME BPE specifications):

Nominal Size in.	Tube O.D x Wall Thickness mm.
1/4"	6.35 × 0.89
3/8"	9.53 × 0.89
1/2"	12.70 × 1.65
3/4"	19.05 × 1.65
1"	25.40 × 1.65
1½"	38.10 × 1.65
2"	50.80 × 1.65
2½"	63.50 × 1.65
3"	76.20 × 1.65
4"	101.60 × 2.11
6"	152.40 × 2.77

Tolerances according ASTM A 270 Supplement 2.

A13MHM



### Clamps - single hinged

Size	A
1"	53.90
1½"	53.90
2"	67.40
2½"	80.90
3"	94.40
4"	122.40



### Clamps - double hinged

Size	A
1/2"	28.60
3/4"	28.60
1"	54.00
1½"	54.00
2"	67.40
2½"	80.90
3"	94.40
4"	122.40
6"	170.40
8"	221.20
10"	272.00



### 3-segment clamps

Afmeting	A
1/2"	28.60
3/4"	28.60
1"	54.00
1½"	54.00
2"	67.40
2½"	80.90
3"	94.40
4"	122.40
6"	170.40
8"	221.20
10"	272.00



## Weld type

p. 10-17

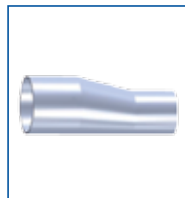
DT-30  
B16W



DT-11  
B31



DT-11  
B32



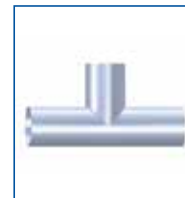
DT-8  
B2KS



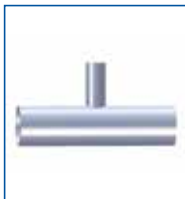
DT-7  
B2S



DT-9  
B7WWW



DT-10  
B7RWWW



B7ERWWW



DT-9  
B9WWW



B9RWWW



B29RBW



B29RSW



## Clamp to weld type

p. 18-25

DT-22  
BS14AM



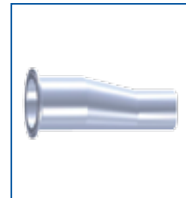
B14W



DT-26  
B31M



DT-26  
B32M



DT-13  
B2KMW



DT-12  
B2CMW



B7WWM



DT-15  
B7WWMS



B7RWWM



DT-14  
B7RWMS



B2UMPBOA



B2UMPSOA







## Clamp type

p. 26-32

16AMP



DT-21  
B31-14MP



DT-21  
B32-14MP



DT-17  
B2KMP



DT-16  
B2CMP



DT-18  
B7MP



DT-27  
B7MPS



DT-19  
B7RMP



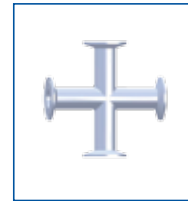
DT-20  
B7RMPS



DT-19  
B7REMP



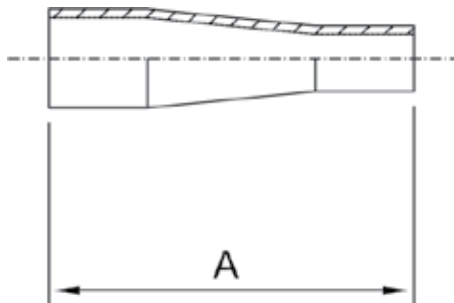
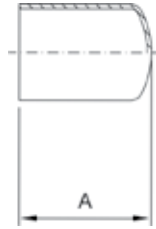
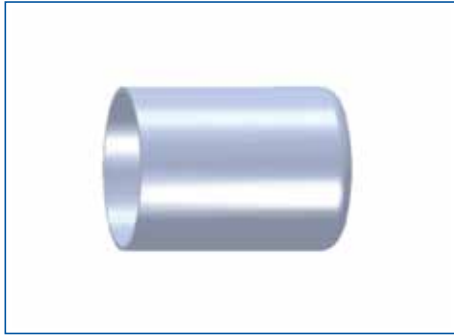
DT-18  
B9MP



B9RMP



BPE-TABLE #DT-30



BPE-TABLE #DT-11

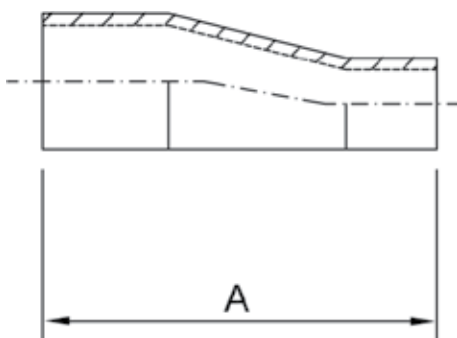
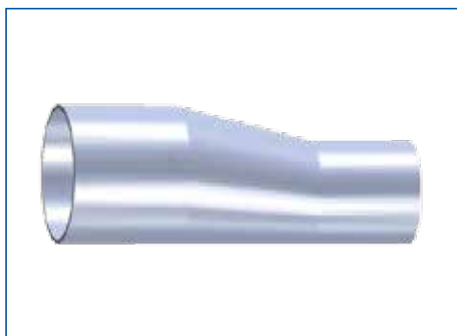
### BPE16W-AWF BPE Welding Cap

Size	A
1/2"	44.45
3/4"	46.04
1"	47.63
1 1/2"	52.39
2	69.85
2 1/2	76.20
3"	82.55
4"	101.60
6"	127.00

### BPE31-AWF BPE Concentric Reducer W x W

Size	A
3/4" x 1/2"	101.6
1" x 1/2"	114.3
1" x 3/4"	101.6
1 1/2" x 1/2"	139.7
1 1/2" x 3/4"	127.0
1 1/2" x 1"	127.0
2" x 1/2"	196.9
2" x 3/4"	184.2
2" x 1"	184.2
2" x 1 1/2"	133.4
2 1/2" x 1/2"	247.7
2 1/2" x 3/4"	235.0
2 1/2" x 1"	235.0
2 1/2" x 1 1/2"	184.2
2 1/2" x 2"	139.7
3" x 1/2"	298.5
3" x 3/4"	285.8
3" x 1"	285.8
3" x 1 1/2"	235.0
3" x 2"	190.5
3" x 2 1/2"	139.7
4" x 1/2"	406.4
4" x 3/4"	393.7
4" x 1"	393.7
4" x 1 1/2"	342.9
4" x 2"	298.5
4" x 2 1/2"	247.7
4" x 3"	196.9
6" x 3"	247.7
6" x 4"	254.0

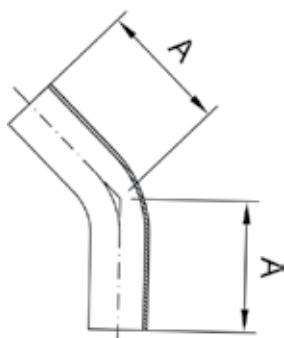
**BPE32-AWF**  
**BPE Eccentric Reducer W x W**



BPE-TABLE #DT-11

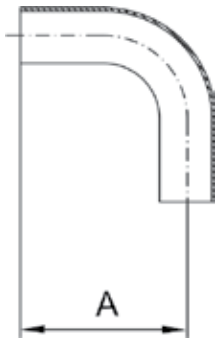
Size	A
3/4" x 1/2"	101.6
1" x 1/2"	114.3
1" x 3/4"	101.6
1 1/2" x 1/2"	139.7
1 1/2" x 3/4"	127.0
1 1/2" x 1"	127.0
2" x 1/2"	196.9
2" x 3/4"	184.2
2" x 1"	184.2
2" x 1 1/2"	133.4
2 1/2" x 1/2"	247.7
2 1/2" x 3/4"	235.0
2 1/2" x 1"	235.0
2 1/2" x 1 1/2"	184.2
2 1/2" x 2"	139.7
3" x 1/2"	298.5
3" x 3/4"	285.8
3" x 1"	285.8
3" x 1 1/2"	235.0
3" x 2"	190.5
3" x 2 1/2"	139.7
4" x 1/2"	406.4
4" x 3/4"	393.7
4" x 1"	393.7
4" x 1 1/2"	342.9
4" x 2"	298.5
4" x 2 1/2"	247.7
4" x 3"	196.9
6" x 3"	247.7
6" x 4"	254.0

BPE-TABLE #DT-8



**BPE2KS-AWF**  
**BPE Tube Bend 45° W x W**

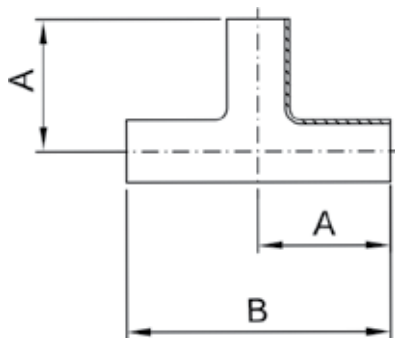
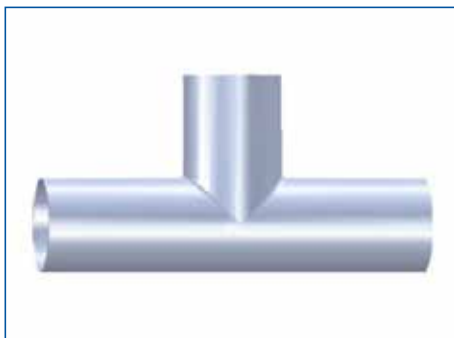
Size	A	T
1/2"	57.15	1.65
3/4"	57.15	1.65
1"	57.15	1.65
1 1/2"	63.50	1.65
2"	76.20	1.65
2 1/2"	85.85	1.65
3"	91.95	1.65
4"	114.30	2.11
6"	158.88	2.77



BPE-TABLE #DT-7

**BPE2S-AWF**  
**BPE Tube Bend 90° W x W**

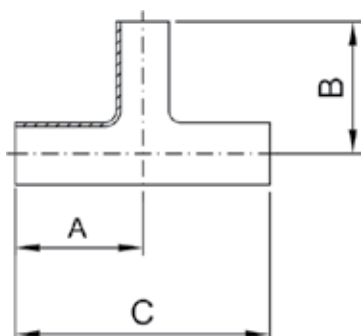
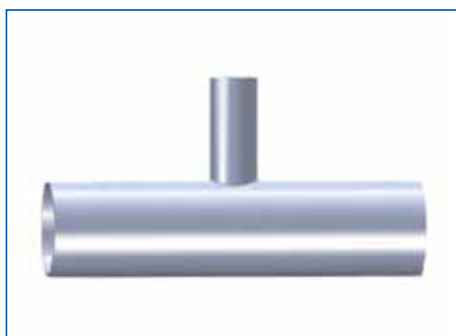
Size	A	T
1/2"	76.20	1.65
3/4"	76.20	1.65
1"	76.20	1.65
1½"	95.25	1.65
2"	120.65	1.65
2½"	139.70	1.65
3"	158.75	1.65
4"	203.20	2.11
6"	292.10	2.77



BPE-TABLE #DT-9

**BPE7WW-AWF**  
**BPE Equal Tee W x W x W**

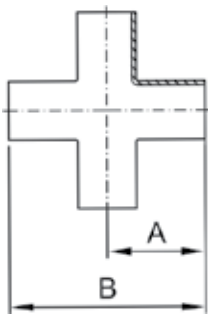
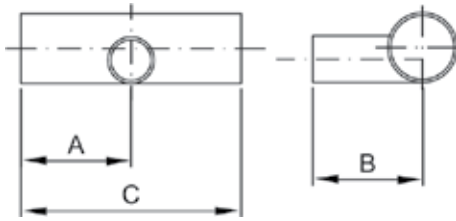
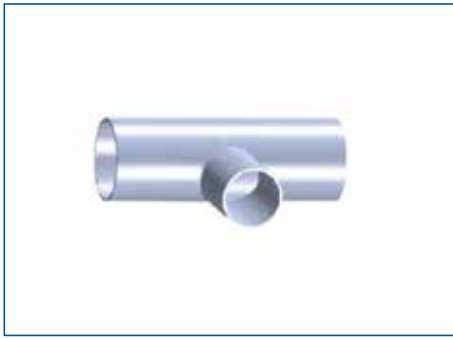
Size	A	B
1/2"	47.63	95.25
3/4"	50.80	101.60
1"	53.98	107.95
1½"	60.33	120.65
2"	73.03	146.05
2½"	79.38	158.75
3	85.73	171.45
4	104.78	209.55
6	142.90	285.80



BPE-TABLE #DT-10

### BPE7RW-AWF BPE Reducing Tee W x W x W

Size	A	B	C
3/4" x 1/2"	50.80	50.80	101.60
1" x 1/2"	53.98	53.98	107.95
1" x 3/4"	53.98	53.98	107.95
1½" x 1/2"	60.33	60.33	120.65
1½" x 3/4"	60.33	60.33	120.65
1½" x 1"	60.33	60.33	120.65
2" x 1/2"	73.03	66.68	146.05
2" x 3/4"	73.03	66.68	146.05
2" x 1"	73.03	66.68	146.05
2" x 1½"	73.03	66.68	146.05
2½" x 1/2"	79.38	73.03	158.75
2½" x 3/4"	79.38	73.03	158.75
2½" x 1"	79.38	73.03	158.75
2½" x 1½"	79.38	73.03	158.75
2½" x 2"	79.38	73.03	158.75
3" x 1/2"	85.73	79.38	171.45
3" x 3/4"	85.73	79.38	171.45
3" x 1"	85.73	79.38	171.45
3" x 1½"	85.73	79.38	171.45
3" x 2"	85.73	79.38	171.45
3" x 2½"	85.73	79.38	171.45
4" x 1/2"	104.78	92.08	209.55
4" x 3/4"	104.78	92.08	209.55
4" x 1"	104.78	92.08	209.55
4" x 1½"	104.78	92.08	209.55
4" x 2"	104.78	98.43	209.55
4" x 2½"	104.78	98.43	209.55
4" x 3"	104.78	98.43	209.55
6" x 3"	142.88	123.95	285.75
6" x 4"	142.88	130.18	285.75



## BPE7ERW-AWF

### BPE Easy Drainage Eccentric Reducing Tee W x W x W

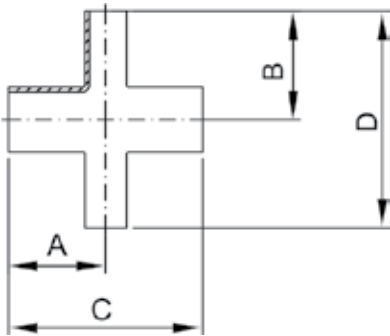
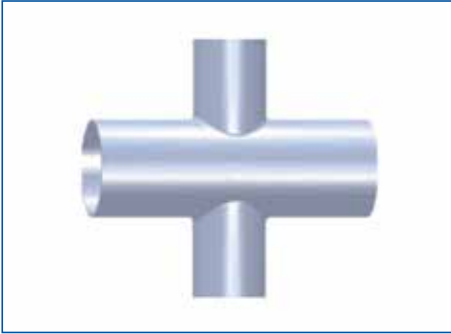
Size	A	B	C
3/4" x 1/2"	50.80	50.80	101.60
1" x 1/2"	53.98	53.98	107.95
1" x 3/4"	53.98	53.98	107.95
1½" x 1/2"	60.33	60.33	120.65
1½" x 3/4"	60.33	60.33	120.65
1½" x 1"	60.33	60.33	120.65
2" x 1/2"	73.03	66.68	146.05
2" x 3/4"	73.03	66.68	146.05
2" x 1"	73.03	66.68	146.05
2" x 1½"	73.03	66.68	146.05
2½" x 1/2"	79.38	73.03	158.75
2½" x 3/4"	79.38	73.03	158.75
2½" x 1"	79.38	73.03	158.75
2½" x 1½"	79.38	73.03	158.75
2½" x 2"	79.38	73.03	158.75
3" x 1/2"	85.73	79.38	171.45
3" x 3/4"	85.73	79.38	171.45
3" x 1"	85.73	79.38	171.45
3" x 1½"	85.73	79.38	171.45
3" x 2"	85.73	79.38	171.45
3" x 2½"	85.73	79.38	171.45
4" x 1/2"	104.78	92.08	209.55
4" x 3/4"	104.78	92.08	209.55
4" x 1"	104.78	92.08	209.55
4" x 1½"	104.78	92.08	209.55
4" x 2"	104.78	98.43	209.55
4" x 2½"	104.78	98.43	209.55
4" x 3"	104.78	98.43	209.55
6" x 3"	142.88	123.95	285.75
6" x 4"	142.88	130.18	285.75

## BPE9W-AWF

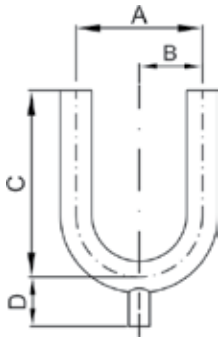
### BPE Equal Cross W x W x W x W

Size	A	B
1/2"	47.60	95.20
3/4"	50.80	101.60
1"	54.00	108.00
1½"	60.30	120.60
2"	73.00	146.00
2½"	79.40	158.80
3"	85.70	171.40
4"	104.80	209.60

**BPE9RW-AWF**  
**BPE Reducing Cross W x W x W x W**



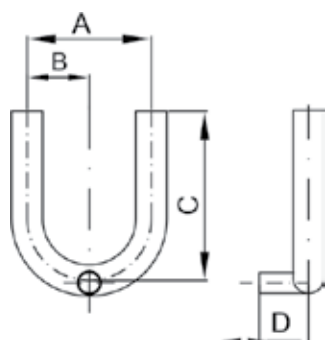
Size	A	B	C	D
3/4" × 1/2"	50.80	50.80	101.60	101.60
1" × 1/2"	54.00	54.90	107.95	108.00
1" × 3/4"	54.00	54.90	107.95	108.00
1½" × 1/2"	60.30	60.30	120.65	120.60
1½" × 3/4"	60.30	60.30	120.65	120.60
1½" × 1"	60.30	60.30	120.65	120.65
2" × 1/2"	73.00	66.70	146.05	133.40
2" × 3/4"	73.00	66.70	146.05	133.40
2" × 1"	73.00	66.70	146.05	133.40
2" × 1½"	73.00	66.70	146.05	133.40
2½" × 1/2"	79.40	73.00	158.75	146.00
2½" × 3/4"	79.40	73.00	158.75	146.00
2½" × 1"	79.40	73.00	158.75	146.00
2½" × 1½"	79.40	73.00	158.75	146.00
2½" × 2"	79.40	73.00	158.75	146.00
3" × 1/2"	85.70	79.40	171.45	158.80
3" × 3/4"	85.70	79.40	171.45	158.80
3" × 1"	85.70	79.40	171.45	158.80
3" × 1½"	85.70	79.40	171.45	158.80
3" × 2"	85.70	79.40	171.45	158.80
3" × 2½"	85.70	79.40	171.45	158.80
4" × 1/2"	104.80	92.10	209.60	184.20
4" × 3/4"	104.80	92.10	209.60	184.20
4" × 1"	104.80	92.10	209.60	184.20
4" × 1½"	104.80	92.10	209.60	184.20
4" × 2"	104.80	98.40	209.60	196.80
4" × 2½"	104.80	98.40	209.60	196.80
4" × 3"	104.80	98.40	209.60	196.80
6" × 3"	142.90	130.20	285.80	206.40
6" × 4"	142.90	130.20	285.80	206.40



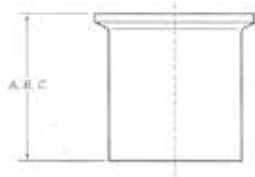
**BPEL29RBW**  
**BPE Point of Use Bend 180° Reduced**  
**Bottom Outlet W x W x W**

Size	A	B	C	D
3/4" x 1/2"	114.30	57.15	76.20	50.58
1" x 1/2"	114.30	57.15	76.20	53.98
1" x 3/4"	114.30	57.15	76.20	53.98
1½" x 1/2"	152.40	76.20	114.30	60.33
1½" x 3/4"	152.40	76.20	114.30	60.33
1½" x 1"	152.40	76.20	114.30	60.33
2" x 1/2"	152.40	76.20	127.00	66.55
2" x 3/4"	152.40	76.20	127.00	66.55
2" x 1"	152.40	76.20	127.00	66.55
2" x 1½"	152.40	76.20	127.00	66.55
2½" x 1/2"	190.50	95.25	146.05	73.03
2½" x 3/4"	190.50	95.25	146.05	73.03
2½" x 1"	190.50	95.25	146.05	73.03
2½" x 1½"	190.50	95.25	146.05	73.03
2½" x 2"	190.50	95.25	146.05	73.03
3" x 1/2"	228.60	114.30	165.10	79.38
3" x 3/4"	228.60	114.30	165.10	79.38
3" x 1"	228.60	114.30	165.10	79.38
3" x 1½"	228.60	114.30	165.10	79.38
3" x 2"	228.60	114.30	165.10	79.38
3" x 2½"	228.60	114.30	165.10	79.38
4" x 1/2"	304.80	152.40	215.90	92.08
4" x 3/4"	304.80	152.40	215.90	92.08
4" x 1"	304.80	152.40	215.90	92.08
4" x 1½"	304.80	152.40	215.90	92.08
4" x 2"	304.80	152.40	215.90	98.55
4" x 2½"	304.80	152.40	215.90	98.55
4" x 3"	304.80	152.40	215.90	98.55



**BPEL29RSW****BPE Point of Use Bend 180° Reduced Side  
Outlet W x W x W**

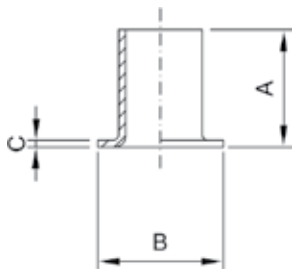
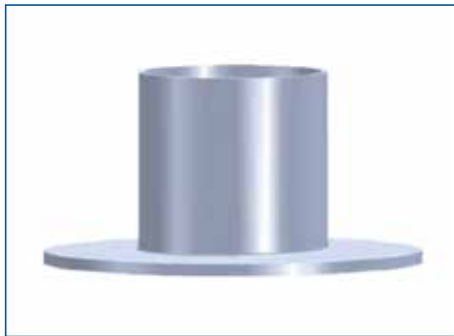
Size	A	B	C	D
3/4" x 1/2"	114.30	57.15	95.25	50.58
1" x 1/2"	114.30	57.15	95.25	53.98
1" x 3/4"	114.30	57.15	95.25	53.98
1½" x 1/2"	152.40	76.20	114.30	60.33
1½" x 3/4"	152.40	76.20	114.30	60.33
1½" x 1"	152.40	76.20	114.30	60.33
2" x 1/2"	152.40	76.20	127.00	66.55
2" x 3/4"	152.40	76.20	127.00	66.55
2" x 1"	152.40	76.20	127.00	66.55
2" x 1½"	152.40	76.20	127.00	66.55
2½" x 1/2"	190.50	95.25	146.05	73.03
2½" x 3/4"	190.50	95.25	146.05	73.03
2½" x 1"	190.50	95.25	146.05	73.03
2½" x 1½"	190.50	95.25	146.05	73.03
2½" x 2"	190.50	95.25	146.05	73.03
3" x 1/2"	228.60	114.30	165.10	79.38
3" x 3/4"	228.60	114.30	165.10	79.38
3" x 1"	228.60	114.30	165.10	79.38
3" x 1½"	228.60	114.30	165.10	79.38
3" x 2"	228.60	114.30	165.10	79.38
3" x 2½"	228.60	114.30	165.10	79.38
4" x 1/2"	304.80	152.40	215.90	92.08
4" x 3/4"	304.80	152.40	215.90	92.08
4" x 1"	304.80	152.40	215.90	92.08
4" x 1½"	304.80	152.40	215.90	92.08
4" x 2"	304.80	152.40	215.90	98.55
4" x 2½"	304.80	152.40	215.90	98.55
4" x 3"	304.80	152.40	215.90	98.55



**BPE14AMP-AWF**  
**BPE Long Butt-Weld Ferrule C x W**

Size	A	B	C
1/4"	44.5	28.7	12.7
3/8"	44.5	28.7	12.7
1/2"	44.5	28.7	12.7
3/4"	44.5	28.7	12.7
1"	44.5	28.7	12.7
1½"	44.5	28.7	12.7
2"	57.2	28.7	12.7
2½"	57.2	28.7	12.7
3"	57.2	28.7	12.7
4"	57.2	28.7	15.9
6"	76.2	38.1	19.1

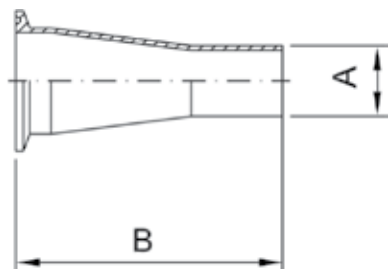
BPE-TABLE #DT-22



**BPE14W-AWF**  
**BPE Lap Joint Stub End**

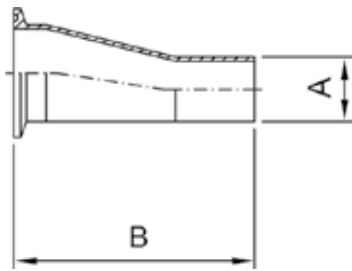
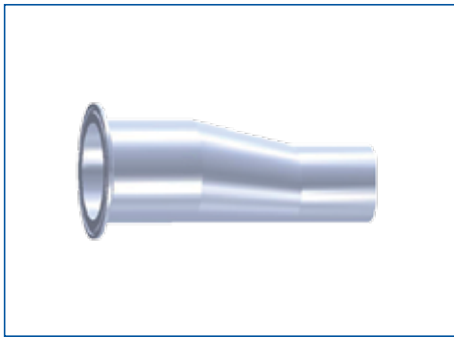
Size	A	B	C
1/2"	50.80	42.96	2.5
3/4"	50.80	42.96	2.5
1"	50.80	50.80	3.3
1½"	50.80	73.03	3.3
2"	63.50	92.08	3.3
2½"	63.50	104.78	3.3
3"	63.50	127.00	4.2
4"	63.50	157.16	4.2
6"	76.20	215.90	5.5

## BPE31M-AWF BPE Concentric Reducer C x W

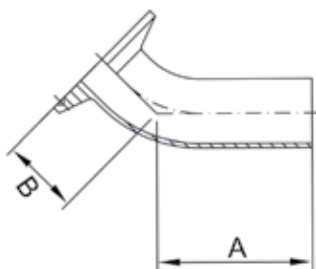


BPE-TABLE #DT-26

Size	A	B
3/4" x 1/2"	12.7	76.2
1" x 1/2"	12.7	88.9
1" x 3/4"	19.0	76.2
1½" x 1/2"	12.7	114.3
1½" x 3/4"	19.0	101.6
1½" x 1"	25.4	101.6
2" x 1/2"	12.7	165.1
2" x 3/4"	19.0	152.4
2" x 1"	25.4	152.4
2" x 1½"	38.1	101.6
2½" x 1/2"	12.7	215.9
2½" x 3/4"	19.0	203.2
2½" x 1"	25.4	152.4
2½" x 1½"	38.1	152.4
2½" x 2"	50.8	108.0
3" x 1/2"	12.7	266.7
3" x 3/4"	19.0	254.0
3" x 1"	25.4	254.0
3" x 1½"	38.1	203.2
3" x 2"	50.8	158.8
3" x 2½"	63.5	108.0
4" x 1/2"	12.7	371.5
4" x 3/4"	19.0	358.8
4" x 1"	25.4	358.8
4" x 1½"	38.1	308.0
4" x 2"	50.8	263.5
4" x 2½"	63.5	212.7
4" x 3"	76.2	161.9
6" x 3"	76.2	222.3
6" x 4"	101.6	228.6



BPE-TABLE #DT-26



BPE-TABLE #DT-13

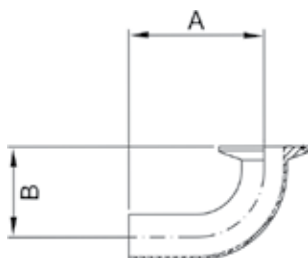
**BPE32M-AWE**  
**BPE Eccentric Reducer C x W**

Size	A	B
3/4" x 1/2"	12.7	76.2
1" x 1/2"	12.7	88.9
1" x 3/4"	19.0	76.2
1 1/2" x 1/2"	12.7	114.3
1 1/2" x 3/4"	19.0	101.6
1 1/2" x 1"	25.4	101.6
2" x 1/2"	12.7	165.1
2" x 3/4"	19.0	152.4
2" x 1"	25.4	152.4
2" x 1 1/2"	38.1	101.6
2 1/2" x 1/2"	12.7	215.9
2 1/2" x 3/4"	19.0	203.2
2 1/2" x 1"	25.4	203.2
2 1/2" x 1 1/2"	38.1	152.4
2 1/2" x 2"	50.8	108.0
3" x 1/2"	12.7	266.7
3" x 3/4"	19.0	254.0
3" x 1"	25.4	254.0
3" x 1 1/2"	38.1	203.2
3" x 2"	50.8	158.8
3" x 2 1/2"	63.5	108.0
4" x 1/2"	12.7	371.5
4" x 3/4"	19.0	358.8
4" x 1"	25.4	358.8
4" x 1 1/2"	38.1	308.0
4" x 2"	50.8	263.5
4" x 2 1/2"	63.5	212.7
4" x 3"	76.2	161.9
6" x 3"	76.2	222.3
6" x 4"	101.6	228.6

**BPE2KM-AWF**  
**BPE Sweep Elbow 45° C x W**

Size	A	B
1/2"	57.15	25.40
3/4"	57.15	25.40
1"	57.15	28.58
1 1/2"	63.50	36.58
2"	76.20	44.45
2 1/2"	85.73	52.32
3"	92.08	60.45
4"	114.30	79.25
6"	158.75	133.35

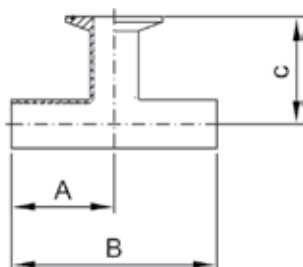
**BPE2CM-AWF**  
**BPE Sweep Elbow 90° C x W**



Size	A	B
1/2"	76.20	41.28
3/4"	76.20	41.28
1"	76.20	50.80
1½"	95.25	69.85
2"	120.65	88.90
2½"	139.70	107.95
3"	158.75	127.00
4"	203.20	168.28
6"	292.10	266.70

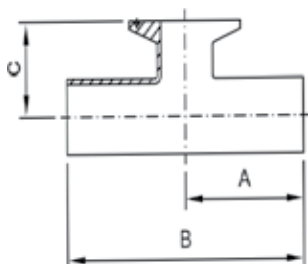
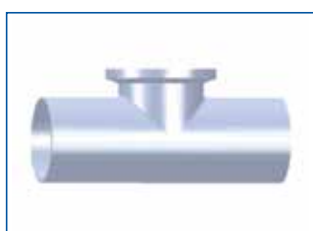
BPE-TABLE #DT-12

**BPE7WM-AWF**  
**BPE Clamp Outlet Tee W x C x W**



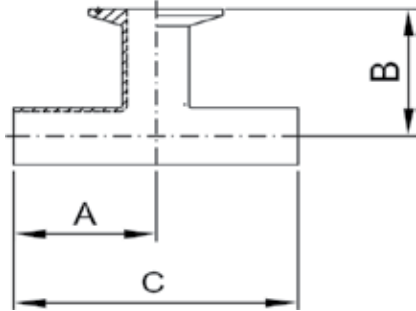
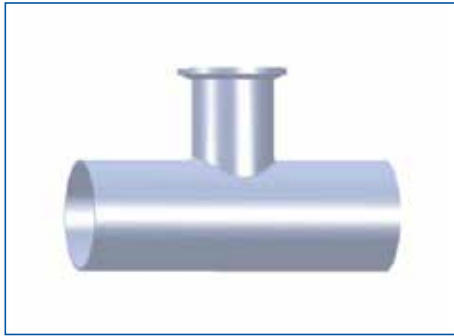
Size	A	B	C
1/2"	47.63	95.25	60.30
3/4"	50.80	101.60	63.50
1"	53.98	107.95	66.68
1½"	60.33	120.65	73.03
2"	73.03	146.05	85.73
2½"	79.38	158.75	92.08
3"	85.73	171.45	98.43
4"	104.78	209.55	120.65

**BPE7WS-AWF**  
**BPE Short Clamp Outlet Tee W x C x W**



Size	A	B	C
1/2"	47.63	95.25	25.40
3/4"	50.80	101.60	28.58
1"	53.98	107.95	26.90
1½"	60.33	120.65	34.93
2"	73.03	146.05	41.28
2½"	79.38	158.75	47.95
3"	85.73	171.45	54.10
4"	104.78	209.55	70.50

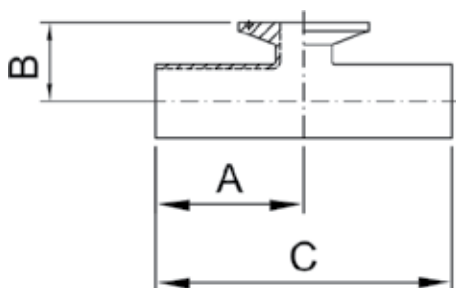
BPE-TABLE #DT-15



## BPE7RWM-AWF

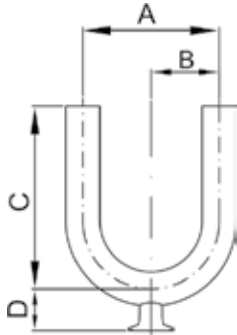
### BPE Clamp Outlet Reducing Tee W x C x W

Size	A	B	C
3/4" x 1/2"	50.80	63.50	101.60
1" x 1/2"	53.98	66.68	107.95
1" x 3/4"	53.98	66.68	107.95
1½" x 1/2"	60.33	73.03	120.65
1½" x 3/4"	60.33	73.03	120.65
1½" x 1"	60.33	73.03	120.65
2" x 1/2"	73.03	79.38	146.05
2" x 3/4"	73.03	79.38	146.05
2" x 1"	73.03	79.38	146.05
2" x 1½"	73.03	79.38	146.05
2½" x 1/2"	79.38	85.73	158.75
2½" x 3/4"	79.38	85.73	158.75
2½" x 1"	79.38	85.73	158.75
2½" x 1½"	79.38	85.73	158.75
2½" x 2"	79.38	85.73	158.75
3" x 1/2"	85.73	92.08	171.45
3" x 3/4"	85.73	92.08	171.45
3" x 1"	85.73	92.08	171.45
3" x 1½"	85.73	92.08	171.45
3" x 2"	85.73	92.08	171.45
3" x 2½"	85.73	92.08	171.45
4" x 1/2"	104.78	104.78	209.55
4" x 3/4"	104.78	104.78	209.55
4" x 1"	104.78	104.78	209.55
4" x 1½"	104.78	104.78	209.55
4" x 2"	104.78	111.13	209.55
4" x 2½"	104.78	111.13	209.55
4" x 3"	104.78	111.13	209.55
6" x 3"	142.88	136.53	285.75
6" x 4"	142.88	146.05	285.75

**BPE7RWS-AWF****BPE Short Clamp Outlet Reducing Tee****W x C x W**

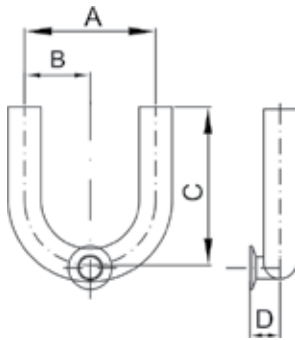
BPE-TABLE #DT-14

Size	A	B	C
3/4" x 1/2"	50.80	25.40	101.60
1" x 1/2"	53.98	28.58	107.95
1" x 3/4"	53.98	28.58	107.95
1½" x 1/2"	60.33	34.93	120.65
1½" x 3/4"	60.33	34.93	120.65
1½" x 1"	60.33	34.93	120.65
2" x 1/2"	73.03	41.28	146.05
2" x 3/4"	73.03	41.28	146.05
2" x 1"	73.03	41.28	146.05
2" x 1½"	73.03	41.28	146.05
2½" x 1/2"	79.38	47.63	158.75
2½" x 3/4"	79.38	47.63	158.75
2½" x 1"	79.38	47.63	158.75
2½" x 1½"	79.38	47.63	158.75
2½" x 2"	79.38	47.63	158.75
3" x 1/2"	85.73	53.98	171.45
3" x 3/4"	85.73	53.98	171.45
3" x 1"	85.73	53.98	171.45
3" x 1½"	85.73	53.98	171.45
3" x 2"	85.73	53.98	171.45
3" x 2½"	85.73	53.98	171.45
4" x 1/2"	104.78	66.68	209.55
4" x 3/4"	104.78	66.68	209.55
4" x 1"	104.78	66.68	209.55
4" x 1½"	104.78	66.68	209.55
4" x 2"	104.78	66.68	209.55
4" x 2½"	104.78	66.68	209.55
4" x 3"	104.78	66.68	209.55
6" x 3"	142.88	92.08	285.75
6" x 4"	142.88	95.25	285.75

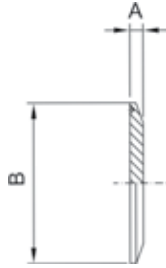
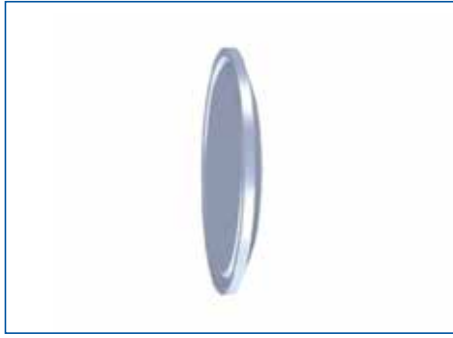
**BPEL29RBMS****BPE Point of Use Bend 180° Reduced  
Bottom Clamp Outlet W x C x W**

Size	A	B	C	D
3/4" × 1/2"	114.30	57.15	95.25	25.40
1" × 1/2"	114.30	57.15	95.25	28.58
1" × 3/4"	114.30	57.15	95.25	28.58
1½" × 1/2"	152.40	76.20	114.30	34.93
1½" × 3/4"	152.40	76.20	114.30	34.93
1½" × 1"	152.40	76.20	114.30	34.93
2" × 1/2"	152.40	76.20	127.00	41.28
2" × 3/4"	152.40	76.20	127.00	41.28
2" × 1"	152.40	76.20	127.00	41.28
2" × 1½"	152.40	76.20	127.00	41.28
2½" × 1/2"	190.50	95.25	146.05	47.63
2½" × 3/4"	190.50	95.25	146.05	47.63
2½" × 1"	190.50	95.25	146.05	47.63
2½" × 1½"	190.50	95.25	146.05	47.63
2½" × 2"	190.50	95.25	146.05	47.63
3" × 1/2"	228.60	114.30	165.10	53.98
3" × 3/4"	228.60	114.30	165.10	53.98
3" × 1"	228.60	114.30	165.10	53.98
3" × 1½"	228.60	114.30	165.10	53.98
3" × 2"	228.60	114.30	165.10	53.98
3" × 2½"	228.60	114.30	165.10	53.98
4" × 1/2"	304.80	152.40	215.90	66.68
4" × 3/4"	304.80	152.40	215.90	66.68
4" × 1"	304.80	152.40	215.90	66.68
4" × 1½"	304.80	152.40	215.90	66.68
4" × 2"	304.80	152.40	215.90	66.68
4" × 2½"	304.80	152.40	215.90	66.68
4" × 3"	304.80	152.40	215.90	66.68



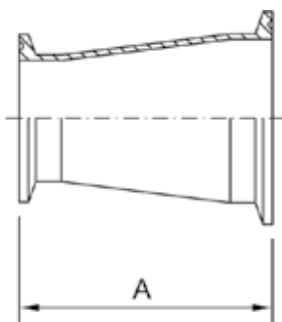
**BPEL29RMS****BPE Point of Use Bend 180° Reduced  
Side Clamp Outlet W x C x W**

Size	A	B	C	D
3/4" x 1/2"	114.30	57.15	95.25	25.40
1" x 1/2"	114.30	57.15	95.25	28.58
1" x 3/4"	114.30	57.15	95.25	28.58
1½" x 1/2"	152.40	76.20	114.30	34.93
1½" x 3/4"	152.40	76.20	114.30	34.93
1½" x 1"	152.40	76.20	114.30	34.93
2" x 1/2"	152.40	76.20	127.00	41.28
2" x 3/4"	152.40	76.20	127.00	41.28
2" x 1"	152.40	76.20	127.00	41.28
2" x 1½"	152.40	76.20	127.00	41.28
2½" x 1/2"	190.50	95.25	146.05	47.63
2½" x 3/4"	190.50	95.25	146.05	47.63
2½" x 1"	190.50	95.25	146.05	47.63
2½" x 1½"	190.50	95.25	146.05	47.63
2½" x 2"	190.50	95.25	146.05	47.63
3" x 1/2"	228.60	114.30	165.10	53.98
3" x 3/4"	228.60	114.30	165.10	53.98
3" x 1"	228.60	114.30	165.10	53.98
3" x 1½"	228.60	114.30	165.10	53.98
3" x 2"	228.60	114.30	165.10	53.98
3" x 2½"	228.60	114.30	165.10	53.98
4" x 1/2"	304.80	152.40	215.90	66.68
4" x 3/4"	304.80	152.40	215.90	66.68
4" x 1"	304.80	152.40	215.90	66.68
4" x 1½"	304.80	152.40	215.90	66.68
4" x 2"	304.80	152.40	215.90	66.68
4" x 2½"	304.80	152.40	215.90	66.68
4" x 3"	304.80	152.40	215.90	66.68



### BPE16AMP BPE Solid End Cap

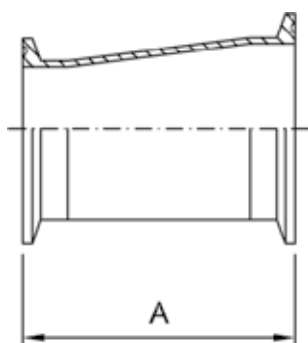
Size	A	B
1/2"	6.35	25.00
3/4"	6.35	25.00
1"	6.35	50.40
1½"	6.35	50.40
2"	6.35	63.91
2½"	6.35	77.50
3"	6.35	90.90
4"	7.90	118.92
6"	11.10	166.68



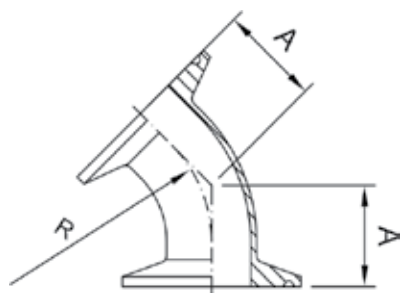
BPE-TABEL #DT-21

### BPE31-14MP BPE Concentric Reducer C x C

Size	A
3/4" × 1/2"	50.80
1" × 1/2"	63.50
1" × 3/4"	50.80
1½" × 1/2"	88.90
1½" × 3/4"	76.20
1½" × 1"	76.20
2" × 1/2"	139.70
2" × 3/4"	127.00
2" × 1"	127.00
2" × 1½"	76.20
2½" × 1"	177.80
2½" × 1½"	127.00
2½" × 2"	76.20
3" × 1"	228.60
3" × 1½"	177.80
3" × 2"	127.00
3" × 2½"	76.20
4" × 1"	333.38
4" × 1½"	282.58
4" × 2"	231.78
4" × 2½"	180.98
4" × 3"	130.18
6" × 3"	190.50
6" × 4"	193.68



BPE-TABEL #DT-21



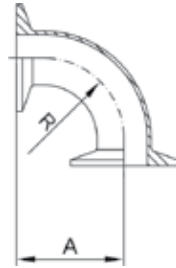
BPE-TABEL #DT-17

### BPE32-14MP BPE Eccentric Reducer C x C

Size	A
3/4" x 1/2"	50.80
1" x 1/2"	63.50
1" x 3/4"	50.80
1½" x 1/2"	88.90
1½" x 3/4"	76.20
1½" x 1"	76.20
2" x 1/2"	139.70
2" x 3/4"	127.00
2" x 1"	127.00
2" x 1½"	76.20
2½" x 1"	177.80
2½" x 1½"	127.00
2½" x 2"	76.20
3" x 1"	228.60
3" x 1½"	177.80
3" x 2"	127.00
3" x 2½"	76.20
4" x 1"	333.38
4" x 1½"	282.58
4" x 2"	231.78
4" x 2½"	180.98
4" x 3"	130.18
6" x 3"	190.50
6" x 4"	193.68

### BPE2KMP BPE Elbow 45° C x C

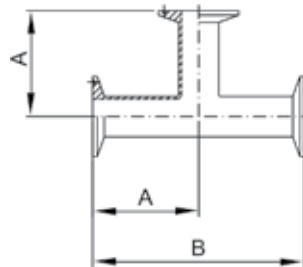
Size	A	R
1/2"	25.4	28.6
3/4"	25.4	28.6
1"	28.6	38.1
1½"	36.6	57.2
2"	44.5	76.2
2½"	52.3	95.3
3"	60.3	114.3
4"	79.4	152.4
6"	133.4	228.6
8"	139.7	304.8
10"	168.3	381.0



**BPE2CMP**  
**BPE Elbow 90° C x C**

Size	A	R
1/2"	41.30	28.6
3/4"	41.30	28.6
1"	50.80	38.1
1½"	69.85	57.2
2"	88.90	76.1
2½"	108.00	95.3
3"	127.00	114.3
4"	168.30	152.4
6"	266.70	228.6

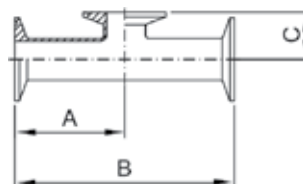
BPE-TABLE #DT-16



**BPE7MP**  
**BPE Equal Tee C x C x C**

Size	A	B
1/2"	57.2	114.3
3/4"	60.3	120.6
1"	66.7	133.4
1½"	73.0	146.0
2"	85.7	171.5
2½"	92.1	184.2
3"	98.4	196.9
4"	120.7	241.3
6"	181.0	362.0

BPE-TABLE #DT-18

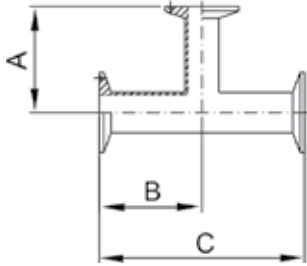


**BPE7SMP**  
**BPE Short Tee C x C x C**

Size	A	B	C
1/2"	57.2	114.3	25.4
3/4"	60.3	120.6	28.6
1"	66.7	133.4	28.6
1½"	73.0	146.0	34.9
2"	85.7	171.5	41.3
2½"	92.1	184.2	47.6
3"	98.4	196.9	54.0
4"	120.7	241.3	69.9
6"	181.0	362.0	117.5

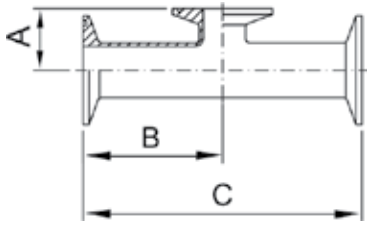
BPE-TABLE #DT-27

**BPE7RMP**  
**BPE Reducing Tee C x C x C**



Size	A	B	C
3/4" × 1/2"	63.50	63.50	127.00
1" × 1/2"	66.68	66.68	133.35
1" × 3/4"	66.68	66.68	133.35
1½" × 1/2"	73.03	73.03	146.05
1½" × 3/4"	73.03	73.03	146.05
1½" × 1"	73.03	73.03	146.05
2" × 1/2"	79.38	85.73	171.45
2" × 3/4"	79.38	85.73	171.45
2" × 1"	79.38	85.73	171.45
2" × 1½"	79.38	85.73	171.45
2½" × 1"	85.73	92.08	184.15
2½" × 1½"	85.73	92.08	184.15
2½" × 2"	85.73	92.08	184.15
3" × 1"	92.08	98.43	196.85
3" × 1½"	92.08	98.43	196.85
3" × 2"	98.43	98.43	196.85
3" × 2½"	98.43	98.43	196.85
4" × 1"	104.78	120.65	241.30
4" × 1½"	104.78	120.65	241.30
4" × 2"	111.13	120.65	241.30
4" × 2½"	111.13	120.65	241.30
4" × 3"	111.13	120.65	241.30
6" × 3"	136.53	181.00	361.95
6" × 4"	146.05	181.00	361.95

**BPE7SRMP**  
**BPE Short Outlet Reducing Tee C x C x C**

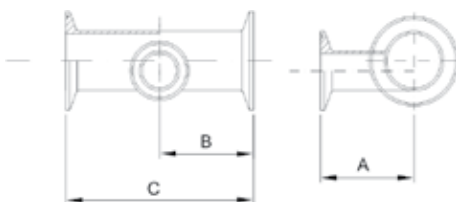


BPE-TABLE #DT-20

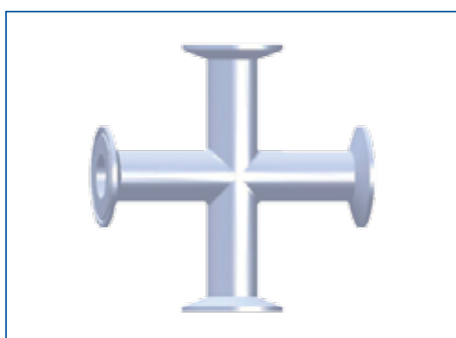
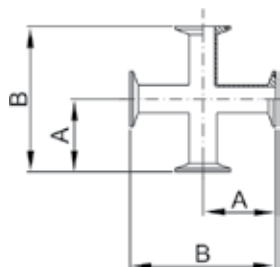
Size	A	B	C
3/4" x 1/2"	25.40	63.50	127.00
1" x 1/2"	28.58	66.68	133.35
1" x 3/4"	28.58	66.68	133.35
1 1/2" x 1/2"	34.93	73.03	146.05
1 1/2" x 3/4"	34.93	73.03	146.05
1 1/2" x 1"	34.93	73.03	146.05
2" x 1/2"	41.28	85.73	171.45
2" x 3/4"	41.28	85.73	171.45
2" x 1"	41.28	85.73	171.45
2" x 1 1/2"	41.28	85.73	171.45
2 1/2" x 1"	47.63	92.08	184.15
2 1/2" x 1 1/2"	47.63	92.08	184.15
2 1/2" x 2"	47.63	92.08	184.15
3" x 1"	54.00	98.43	196.85
3" x 1 1/2"	54.00	98.43	196.85
3" x 2"	54.00	98.43	196.85
3" x 2 1/2"	54.00	98.43	196.85
4" x 1"	66.68	120.65	241.30
4" x 1 1/2"	66.68	120.65	241.30
4" x 2"	66.68	120.65	241.30
4" x 2 1/2"	66.68	120.65	241.30
4" x 3"	66.68	120.65	241.30
6" x 3"	92.08	181.00	361.95
6" x 4"	95.25	181.00	361.95

### BPE7REMP

### BPE Easy Drainage Eccentric Reducing Tee C x C x C



BPE-TABLE #DT-19



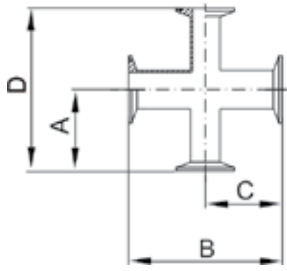
BPE-TABLE #DT-18

Size	A	B	C
3/4" x 1/2"	63.50	63.50	127.00
1" x 1/2"	66.68	66.68	133.35
1" x 3/4"	66.68	66.68	133.35
1 1/2" x 1/2"	73.03	73.03	146.05
1 1/2" x 3/4"	73.03	73.03	146.05
1 1/2" x 1"	73.03	73.03	146.05
2" x 1/2"	79.38	85.73	171.45
2" x 3/4"	79.38	85.73	171.45
2" x 1"	79.38	85.73	171.45
2" x 1 1/2"	79.38	85.73	171.45
2 1/2" x 1"	85.73	92.08	184.15
2 1/2" x 1 1/2"	85.73	92.08	184.15
2 1/2" x 2"	85.73	92.08	184.15
3" x 1"	92.08	98.43	196.85
3" x 1 1/2"	92.08	98.43	196.85
3" x 2"	98.43	98.43	196.85
3" x 2 1/2"	98.43	98.43	196.85
4" x 1"	104.78	120.65	241.30
4" x 1 1/2"	104.78	120.65	241.30
4" x 2"	111.13	120.65	241.30
4" x 2 1/2"	111.13	120.65	241.30
4" x 3"	111.13	120.65	241.30
6" x 3"	136.53	181.00	361.95
6" x 4"	146.05	181.00	361.95

### BPE9MP

### BPE Equal Cross C x C x C x C

Size	A	B
1/2"	57.2	114.3
3/4"	60.3	120.6
1"	66.7	133.4
1 1/2"	73.0	146.0
2"	85.7	171.4
2 1/2"	92.1	184.2
3"	98.4	196.8
4"	120.6	241.2
6"	181.0	362.0
8"	174.6	349.3
10"	212.7	425.5



**BPE9RMP**  
**BPE Reducing Cross C x C x C x C**

Size	A	B	C	D
3/4" x 1/2"	63.50	63.50	127.00	127.00
1" x 1/2"	66.68	66.68	133.35	133.35
1" x 3/4"	66.68	66.68	133.35	133.35
1 1/2" x 1/2"	73.03	73.03	146.05	146.05
1 1/2" x 3/4"	73.03	73.03	146.05	146.05
1 1/2" x 1"	73.03	73.03	146.05	146.05
2" x 1/2"	79.38	85.73	171.45	158.75
2" x 3/4"	79.38	85.73	171.45	158.75
2" x 1"	79.38	85.73	171.45	158.75
2" x 1 1/2"	79.38	85.73	171.45	158.75
2 1/2" x 1"	85.73	92.08	184.15	171.45
2 1/2" x 1 1/2"	85.73	92.08	184.15	171.45
2 1/2" x 2"	85.73	92.08	184.15	171.45
3" x 1"	92.08	98.43	196.85	184.15
3" x 1 1/2"	92.08	98.43	196.85	184.15
3" x 2"	98.43	98.43	196.85	196.85
3" x 2 1/2"	98.43	98.43	196.85	196.85
4" x 1"	104.78	120.65	241.30	209.55
4" x 1 1/2"	104.78	120.65	241.30	209.55
4" x 2"	111.13	120.65	241.30	222.25
4" x 2 1/2"	111.13	120.65	241.30	222.25
4" x 3"	111.13	120.65	241.30	222.25
6" x 3"	136.53	181.00	361.95	273.05
6" x 4"	146.05	181.00	361.95	292.10



---

---

---

---

---

---

---

---

---

---

---

---

---

---

---

---

---

---

---

---

---

---

---

---

---

---

---

---

---

---

---

---

---

---

---

---

---

---

---

---

---

---

---



## Gillain & Co, 135 years of trust and expertise



**1875**

Paul Gillain, originally from Dinant, settles in Antwerp as a trader. He mainly imports linseed press cakes and cattle feed.

**1885 - 1887**

He launches his own patented cream separator and introduces the "Alfa Laval" centrifugal cream separator in Belgium.

**1913 - 1918**

Paul Gillain founds a factory of woodworking machines and gas engines. This is established in Kontich from 1914. At the outbreak of WW I his excellent equipment is seized. After the war he focuses on importing equipment for the dairy sector, agricultural equipment and woodworking machines.

**1924 - 1952**

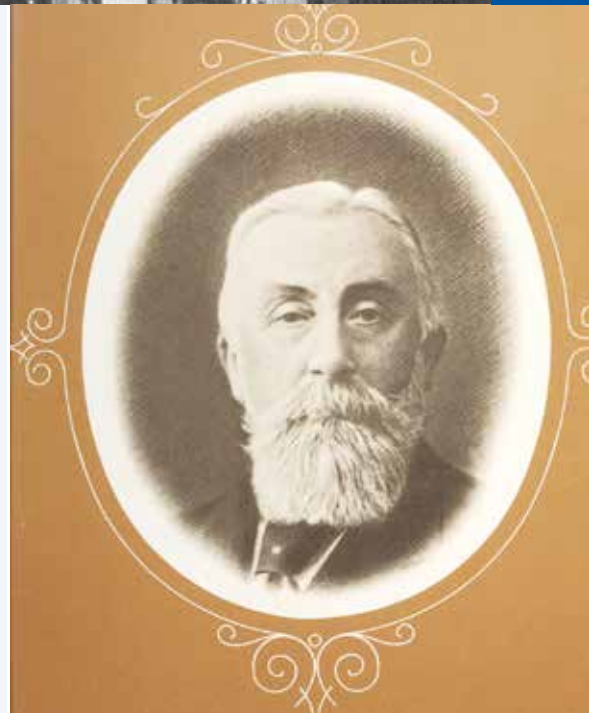
René Gillain succeeds his father Paul in 1924. Gillain & Co open branches in Eisden and Luxembourg (city) in addition to the registered office in Antwerp. Joseph and Fernand Gillain take over the management in 1952. The increasing use of stainless steel for the production of hygienic equipment forms the basis of considerable expansion. The "Brewery", "Industry" and "Pharmaceuticals" divisions are formed.

**1971 - 2001**

Gillain & Co moves to a brand new building in Aartselaar in 1971. From 1977 Guy and Patrick Gillain (4th generation) actively work in the fast-growing family business. 1986 – The storage places for stainless steel pipes are extended significantly. From 1987 Gillain & Co completes major turnkey projects worldwide. 1990 - Guy Gillain takes the lead and further develops the specialisation in designing, assembling and supplying hygienic installations. 2001 – Takeover of the "Systems and projects" division by Fabricom GDF SUEZ. Gillain & Co remains autonomous and becomes a highly specialised supplier of components and equipment for the food and life sciences sectors from then on.

**2001 - present**

2007 - Gillain & Co is again the exclusive distributor of Alfa Laval (food and pharmaceuticals) in Belgium. 2008 – The warehouse is expanded greatly and is fully automated. Customers can be served better and faster and full traceability of the components is guaranteed. With its extensive knowledge of hygienic processes and an unlimited range, Gillain & Co has been the partner par excellence for over 135 years for businesses who want to produce safely and cost efficiently.





### 1. Know-how

Our technical experts support you to make the right choice.

### 2. Quick deliveries

*We permanently hold an extended stock.* Standard parts are delivered within 24 hours.

*Same day order handling.* Thanks to a fully automated warehouse, we are capable of preparing your order immediately.

### 3. Always the best deal

We like to maintain a long term relation with our customers and therefore will always offer our best prices. Take the test: send your next price request to [advice@gillain.com](mailto:advice@gillain.com)

### 4. Top manufacturers

To reach our objective - offering high quality products at the best prices - we only work with manufacturers that specialize in their specific area.

### 5. Safety

Our products comply with the highest safety and performance requirements.

### 6. Certificates

We inform you about the various standards and specifications and accordingly produce the certificates for you.

### 7. Efficient inventory management

*Only what you need.* We have the space and know-how to take care of your stock on consignment. You only pay for the goods you have consumed.

*More service:* We manage your stock also if the goods remain in your warehouse.

*As long as you wish.* Ask for our short- and long-term solutions.

### 8. Commitment

*Safety and responsibility.* We are very committed to hygiene and safety. But we are also greatly concerned about the environment. We have installed solar panels on top of our warehouse roof which supply the necessary power to run our company. This makes Gillain & Co a carbon neutral company.

Why Gillain & Co ?