

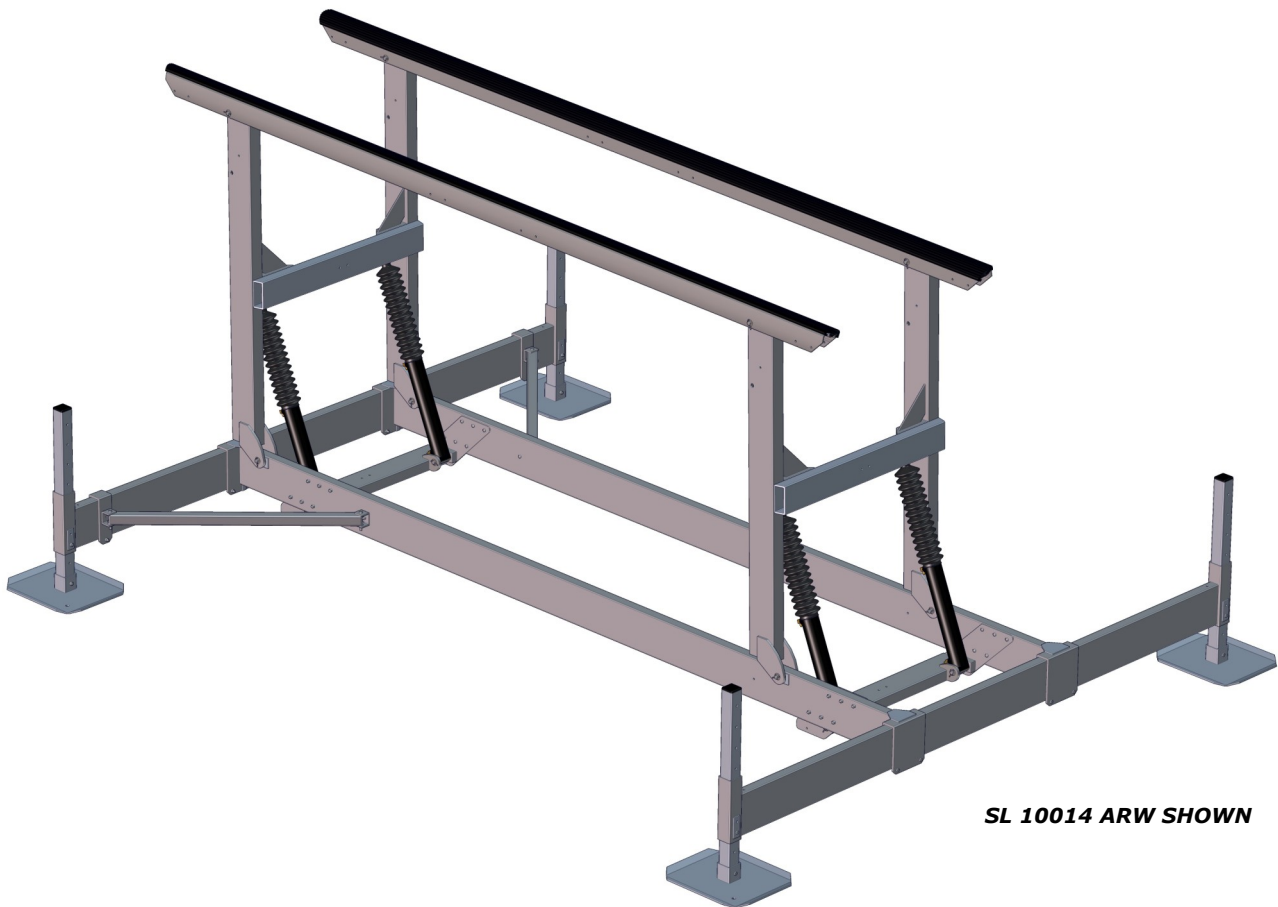


# SUNLIFT™

**ASSEMBLY, INSTALLATION & USE MANUAL**

**MODEL NUMBERS**

SL 4010 AR  
SL 6012 AR  
SL 7012 ARW  
SL 7017 PAR  
SL 8012 ARW  
SL10014 ARW  
SL 12016 ARW



**SL 10014 ARW SHOWN**

**READ CAREFULLY, KEEP THESE INSTRUCTIONS**

**COPYRIGHT SUNSTREAM CORPORATION 2018—ALL RIGHTS RESERVED**

## **Table of Contents**

Disclaimer of Liability.....	3
Safety.....	4-5
Overview of SunLifts.....	6-8
Part Lists.....	9-12
Assembly of Sunlift.....	13-24
Assembly of Tritoon Deck.....	25-32
Connecting to Power Pack.....	33
Completing Assembly.....	34
Installation.....	35-36
Use and Maintenance.....	37
Remote Control.....	38
Troubleshooting.....	39
Warranty.....	40-41

## **Disclaimer of Liability**

These assembly and installation instructions have been provided by Sunstream Corporation at the request of the potential installer and/or assembler. If you are not an authorized Sunstream Dealer and are not a reasonably skilled mechanic, please contact Sunstream so that we can refer you to a local dealer who can skillfully and safely perform the assembly and installation of your Sunstream boat lift.

It is the potential installer and/or assembler's responsibility to determine whether he or she has the necessary skills, knowledge, and tools to properly and safely assemble and/or install the Sunstream Lift described herein. Improper assembly and/or installation may cause the lift to function improperly or not to function. Improper assembly and/or installation may additionally cause a risk to personal safety or property. If the assembler and/or installer is confused or has questions or concerns about a particular assembly or installation, he or she should contact Sunstream by telephone at (253)-395-0500, Int'l (001)-(253)-395-0500 before proceeding further. The information contained in these instructions does not constitute a warranty or guarantee of any kind.

An assembler's and/or installer's failure to correctly follow these assembly and installation instructions constitutes a waiver of the assembler and/or installer's rights against Sunstream regarding any subsequent damages to property or personal injury caused by the assembler's and/or installer's improper assembly and/or installation.

Many boats today require specific bunk/support configurations; Multi-hull boats, including but not limited to pontoon, tritoon, some V-hull and catamaran style boats often require specific bunk configurations to properly support the boat on a boatlift.

In some cases boat hull material and strake layout also may require "a custom engineered" bunk configuration. Any boat on a Sunstream lift should be supported per boat manufacturer recommendations.

Contact the boat manufacturer to verify how to support the boat. Sunstream is not responsible for determining the proper way to support each craft that may go on a Sunstream lift. Inadequate support or incorrect position of a boat on a Sunstream lift may result in damage to the boat. Sunstream does not warrant that any bunk/kit configuration will support the hull/sponsons as the boat manufacturer intends or requires.

# **Safety**

## IMPORTANT SAFETY INSTRUCTIONS

**If you have any questions, please call your dealer, or Sunstream at (888)786-5438**

### **Save These Instructions**

Your safety and the safety of others is very important. Proper use of the information in this manual will help avoid potential hazards that could cause damage to property and/or personal injury. It is not possible, however, to identify and warn users of all hazards associated with the assembly, installation, operation, and maintenance of the SunLift. You must use your own good judgment.



-Will result in serious injury or death.



-Could result in serious injury or death.



-Could result in minor or moderate injury.

**NOTICE**

-Not related to personal injury



Important - suggested emphasis



Failure to comply with the following rules may result in severe injury and/or death and damage to property. Misuse of your lift may cause the lift and boat to become unstable.

Your Sun Lift is a piece of heavy equipment and the act of raising your boat should be treated with respect and good judgment. Children should not operate lift without adult supervision.

No one should operate the lift without fully understanding the proper operating procedures.

**NEVER** exceed the maximum capacity of the lift. Overloading may result in mechanical failure and personal injury. Positioning the boat too far forward or aft may overload the lift.

Your lift is not designed to be an elevator for people. Therefore, do not use the lift for moving or supporting humans. Load and Unload passengers only when boat is floating.

Restrict children and adults from playing on or near the Sun Lift.

**NEVER** go under your boat when the lift is in the raised position. Also, your lift is not design to be a maintenance platform. Service and maintenance work on your boat should be performed at a proper marine facility, and not while on your Sun Lift.

The Maximum Capacity for the Lift should be listed on the lift itself - if it is not, call Sunstream immediately to determine your lifts capacity. Operating the Lift with a greater amount of total weight may cause the lift and boat to become unstable and/or capsize, possibly causing property damage and/or and severe injury or death to individuals situated nearby.

Installation or use of the Lift in overly rigorous conditions may cause the Lift to become unstable and/or capsize, possibly causing property damage and/or severe injury or death to individuals situated nearby.

# Safety



It is safest to leave the boat in the over-center position.

Be sure the Sun Lift remains level at all four corners. Out of level installations may cause lift failure and personal injury. All four corners must be within 2" of each other.

If a Sun Lift is located near an area where swimmers are prone to diving into the water (such as off of a boathouse), make sure they are aware of the location of the Sun Lift when boat is not present, and lift is hidden under water.



Do not use your Powerpack for storage purposes. Articles or tools in the box could cause damage to the pump or electrical system..

Note that the weight of the boat on the lift for the first time may cause it to settle. Therefore, great care and precaution should be taken when lifting for the first few times until you are certain the lift is stabilized. Make sure everyone in the immediate area is aware during this process, and is not in close proximity to the lift (especially not in the water near the lift!)

The Catwalk accessory is not designed to hold people. Do not stand or walk on the catwalk.

Lift structure, welds, bolts, pins and hydraulics must be inspected annually.

## NOTICE

Do not disconnect quick-disconnect hydraulics with a boat loaded on the lift nor in the over-center position. It is difficult to re-attach the hoses if the hoses are pressurized.

Do not power boat on lift. Lower lift so boat glides into position. Boat must be in neutral to minimize risk to propeller. Lift is not designed to react to loads from boat engine (s).

Safety tip: Use your remote control to raise bunks out of the water after departing, therefore allowing swimmers to see location of lift.

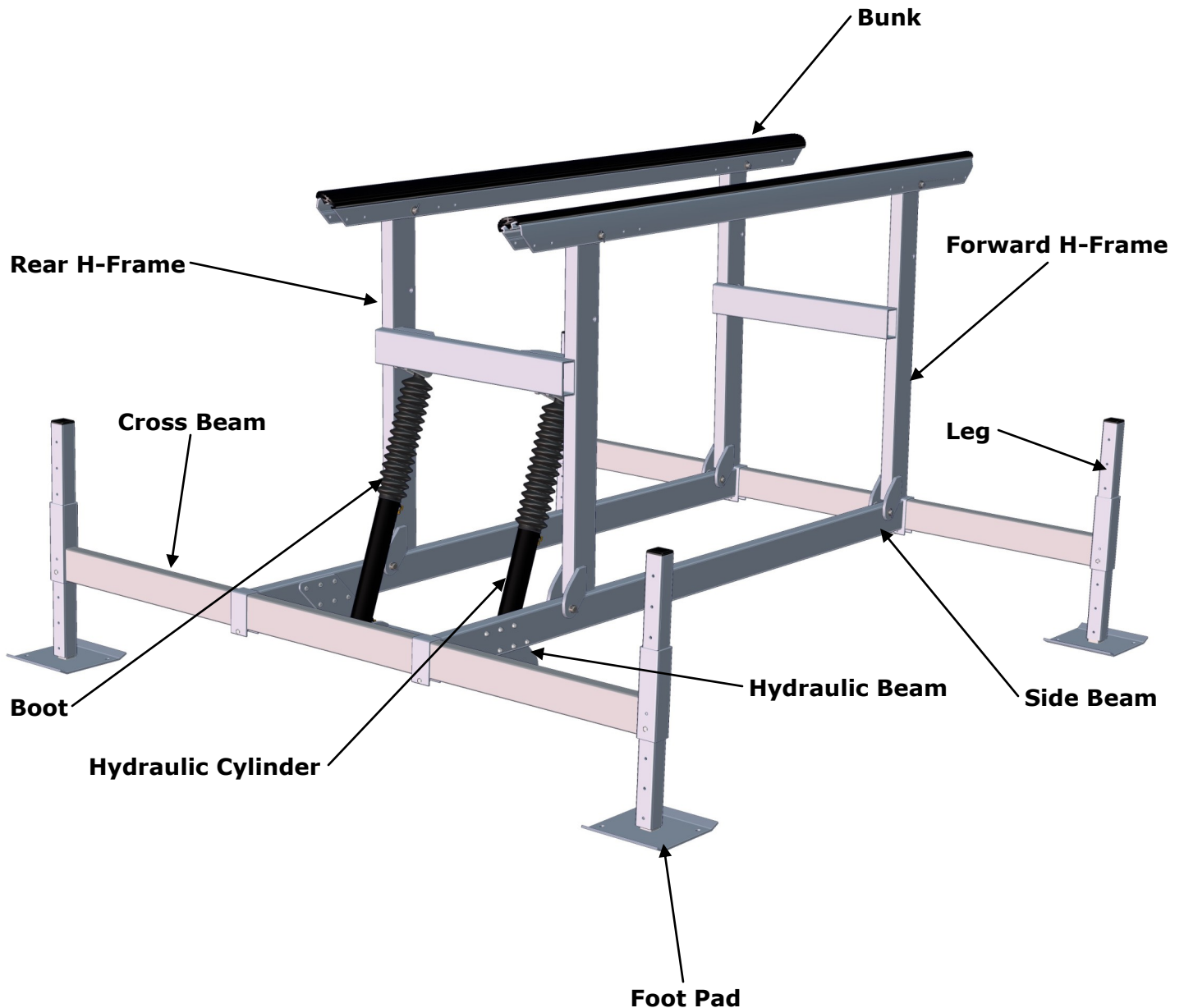
# Overview Of Components

*Common 2 cylinder SunLift*

*SL4010 AR, SL6012 AR & SL7012 ARW*

**SL4 & SL6 FOLLOW STEPS 1-7 & 14**

**SL7 FOLLOW STEPS 1-8 & 14**



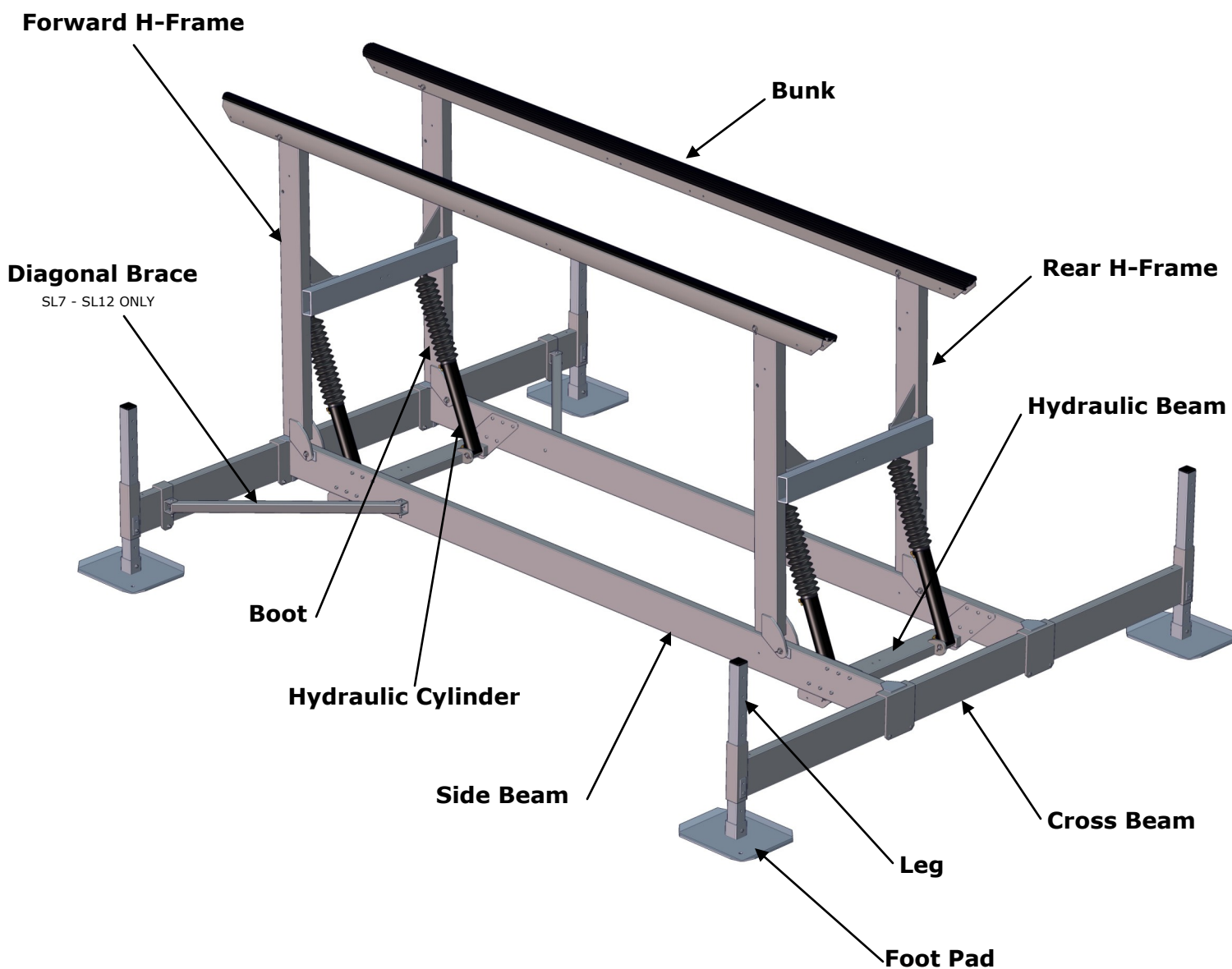
**SL 4010 AR SHOWN**

# Overview Of Components

*Common 4 cylinder SunLift*

*SL8012 ARW, SL10014 ARW & SL12016 ARW*

**FOLLOW STEPS 1-8 & 14**



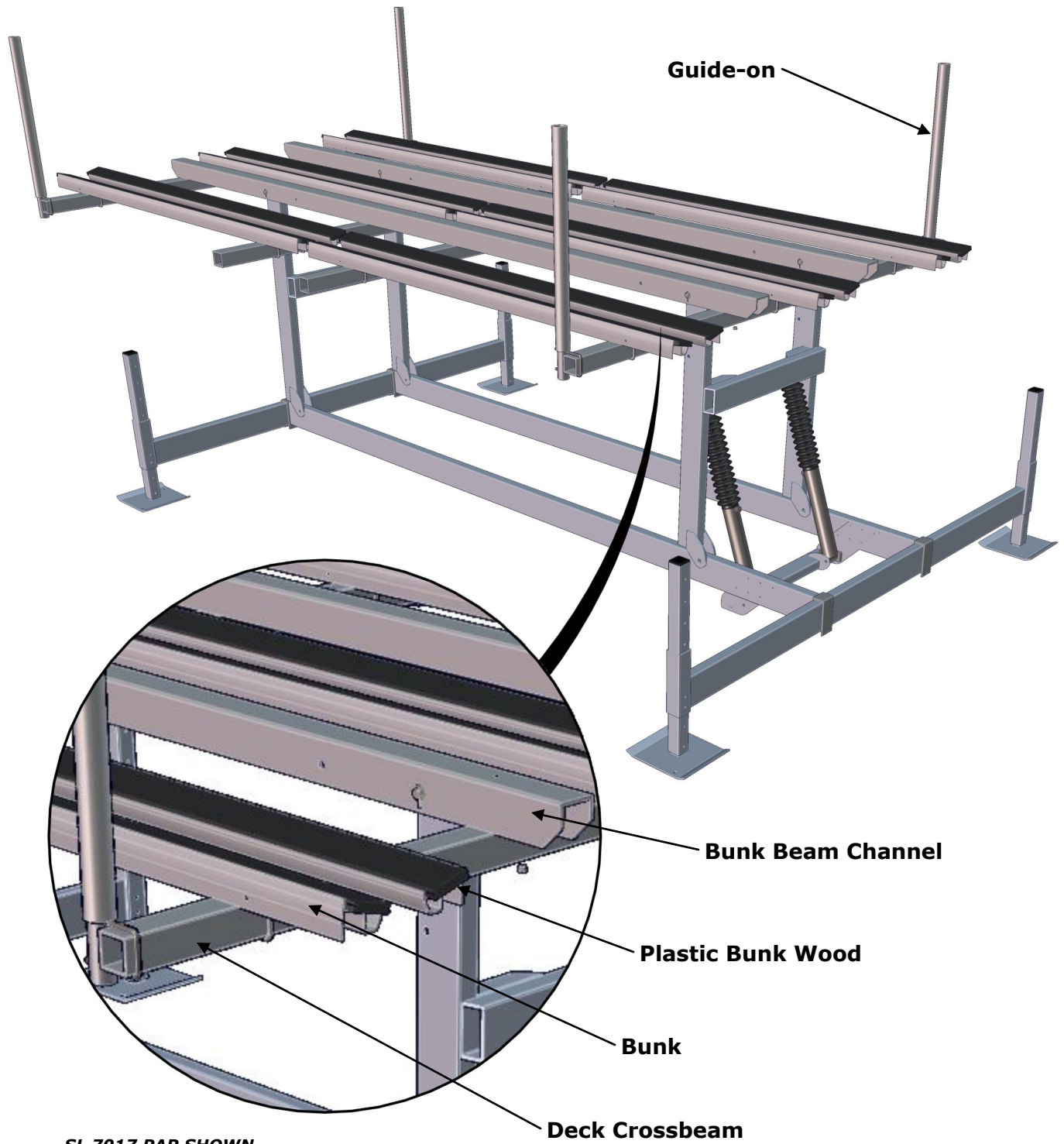
**SL 10014 ARW SHOWN**

# Overview Of Components

*Tri Toon Lift*

*SL7017 PAR*

**FOLLOW STEPS 1-6 & 9-14**





## Parts List

<b>LEGS</b>	
2 FT (24")	SA-LR2
4 FT (48")	SA-LR4
6 FT (72")	SA-LR6
8 FT (96")	SA-LR8
12 FT (144")	SA-LR12
16 FT (192")	SA-LR16
24 FT (288")	SA-LR24

<b>SL 4010 AR</b>		
<b>PART</b>	<b>QTY</b>	<b>PART NUMBER</b>
SIDE BEAM	2	95-000007-29
CROSS BEAM	2	95-000001-11
BUNK	2	94-000003-80
HYDRAULIC BEAM	1	95-000006-68
FWD H-FRAME	1	95-000006-70
REAR H-FRAME	1	95-000006-67
FOOT PAD	4	95-000007-30
LEG	4	*SEE CHART ON PAGE 9
HARDWARE KIT	1	91-000007-05
CYLINDER	1	92-000009-73
CYLINDER KIT (INCLUDES, CYLINDER(S), HOSES & FITTINGS)	1	921217
PUMP	1	92-000001-03
POWER PACK (INCLUDES PUMP AND FIBERGLASS BOX)	1	LA-PPP30

## Parts List

<b>SL 6012 AR</b>		
<b><i>PART</i></b>	<b><i>QTY</i></b>	<b><i>PART NUMBER</i></b>
SIDE BEAM	2	952313
CROSS BEAM	2	95-000001-12
BUNK	2	94-000003-81
HYDRAULIC BEAM	1	95-000006-68
FWD H-FRAME	1	95-000006-70
REAR H-FRAME	1	95-000006-67
FOOT PAD	4	95-000007-30
LEG	4	<i>*SEE CHART ON PAGE 9</i>
HARDWARE KIT	1	91-000007-05
CYLINDER	2	92-000009-73
CYLINDER KIT (INCLUDES, CYLINDER(S), HOSES & FITTINGS)	1	921217
PUMP	1	92-000001-03
POWER PACK (INCLUDES PUMP AND FIBERGLASS BOX)	1	LA-PPP30

<b>SL 7012 ARW</b>		
<b><i>PART</i></b>	<b><i>QTY</i></b>	<b><i>PART NUMBER</i></b>
SIDE BEAM	2	952053
CROSS BEAM	2	952054
BUNK	2	94-000003-81
HYDRAULIC BEAM	1	952048
FWD H-FRAME	1	952050
REAR H-FRAME	1	952049
FOOT PAD	4	95-000001-36
DIAG. BRACE SADDLE	2	952052
DIAG. BRACE TUBE	2	412686
DIAG. BRACE MOUNT	2	412685
LEG	4	<i>*SEE CHART ON PAGE 9</i>
HARDWARE KIT	1	912069
CYLINDER	2	92-000009-73
CYLINDER KIT (INCLUDES, CYLINDER(S), HOSES & FITTINGS)	1	922071
PUMP	1	92-000001-05
POWER PACK (INCLUDES PUMP AND FIBERGLASS BOX)	1	LA-PPP50

## Parts List

<b>SL 7017PAR (TriToon Lift)</b>		
<b>PART</b>	<b>QTY</b>	<b>PART NUMBER</b>
SIDE BEAM	2	952289
CROSS BEAM	2	95-000001-12
BUNK BEAM CHANNEL	2	442872
DECK CROSS BEAM	4	442873
BUNK	12	442899
BUNK WOOD	12	492877
HYDRAULIC BEAM	1	95-000006-68
FWD H-FRAME	1	95-000006-70
REAR H-FRAME	1	95-000006-67
FOOT PAD	4	95-000007-30
LEG	4	*SEE CHART ON PAGE 9
HARDWARE KIT LIFT	1	91-000007-05
HARDWARE KIT DECK		992304
CYLINDER	2	92-000009-73
CYLINDER KIT (INCLUDES, CYLINDER(S), HOSES & FITTINGS)	1	92071
PUMP	1	92-000001-05
POWER PACK (INCLUDES PUMP AND FIBERGLASS BOX)	1	LA-PPP50

<b>SL 8012 ARW</b>		
<b>PART</b>	<b>QTY</b>	<b>PART NUMBER</b>
SIDE BEAM	2	952051
CROSS BEAM	2	952054
BUNK	2	94-000003-81
HYDRAULIC BEAM	2	952048
FWD H-FRAME	1	952047
REAR H-FRAME	1	952046
FOOT PAD	4	95-000001-36
DIAG. BRACE SADDLE	2	952052
DIAG. BRACE TUBE	2	412686
DIAG. BRACE MOUNT	2	412685
LEG	4	*SEE CHART ON PAGE 9
HARDWARE KIT	1	912068
CYLINDER	4	92-000009-73
CYLINDER KIT (INCLUDES, CYLINDER(S), HOSES & FITTINGS)	1	922070
PUMP	1	92-000001-03
POWER PACK (INCLUDES PUMP AND FIBERGLASS BOX)	1	LA-PPP30

## Parts List

SL 10014 ARW		
<b>PART</b>	<b>QTY</b>	<b>PART NUMBER</b>
SIDE BEAM	2	952061
CROSS BEAM	2	952054
BUNK	2	942057
HYDRAULIC BEAM	2	952048
FWD H-FRAME	1	952047
REAR H-FRAME	1	952046
FOOT PAD	4	95-000001-36
DIAG. BRACE SADDLE	2	952052
DIAG. BRACE TUBE	2	412686
DIAG. BRACE MOUNT	2	412685
LEG	4	*SEE CHART ON PAGE 9
HARDWARE KIT	1	912068
CYLINDER	4	92-000009-73
CYLINDER KIT (INCLUDES, CYLINDER(S), HOSES & FITTINGS)	1	922070
PUMP	1	92-000001-03
POWER PACK (INCLUDES PUMP AND FIBERGLASS BOX)	1	LA-PPP30

SL 12016 ARW		
<b>PART</b>	<b>QTY</b>	<b>PART NUMBER</b>
SIDE BEAM	2	952062
CROSS BEAM	2	952054
BUNK	2	942058
HYDRAULIC BEAM	2	952048
FWD H-FRAME	1	952047
REAR H-FRAME	1	952046
FOOT PAD	4	95-000001-36
DIAG. BRACE SADDLE	2	952052
DIAG. BRACE TUBE	2	412686
DIAG. BRACE MOUNT	2	412685
LEG	4	*SEE CHART ON PAGE 9
HARDWARE KIT	1	912068
CYLINDER	4	92-000009-73
CYLINDER KIT (INCLUDES, CYLINDER(S), HOSES & FITTINGS)	1	922072
PUMP	1	92-000001-05
POWER PACK (INCLUDES PUMP AND FIBERGLASS BOX)	1	LA-PPP50

## Assembly

*If you have any questions during the assembly process, please call your local dealer or Sunstream at (888)SUN-LIFT.*

### **CAUTION**

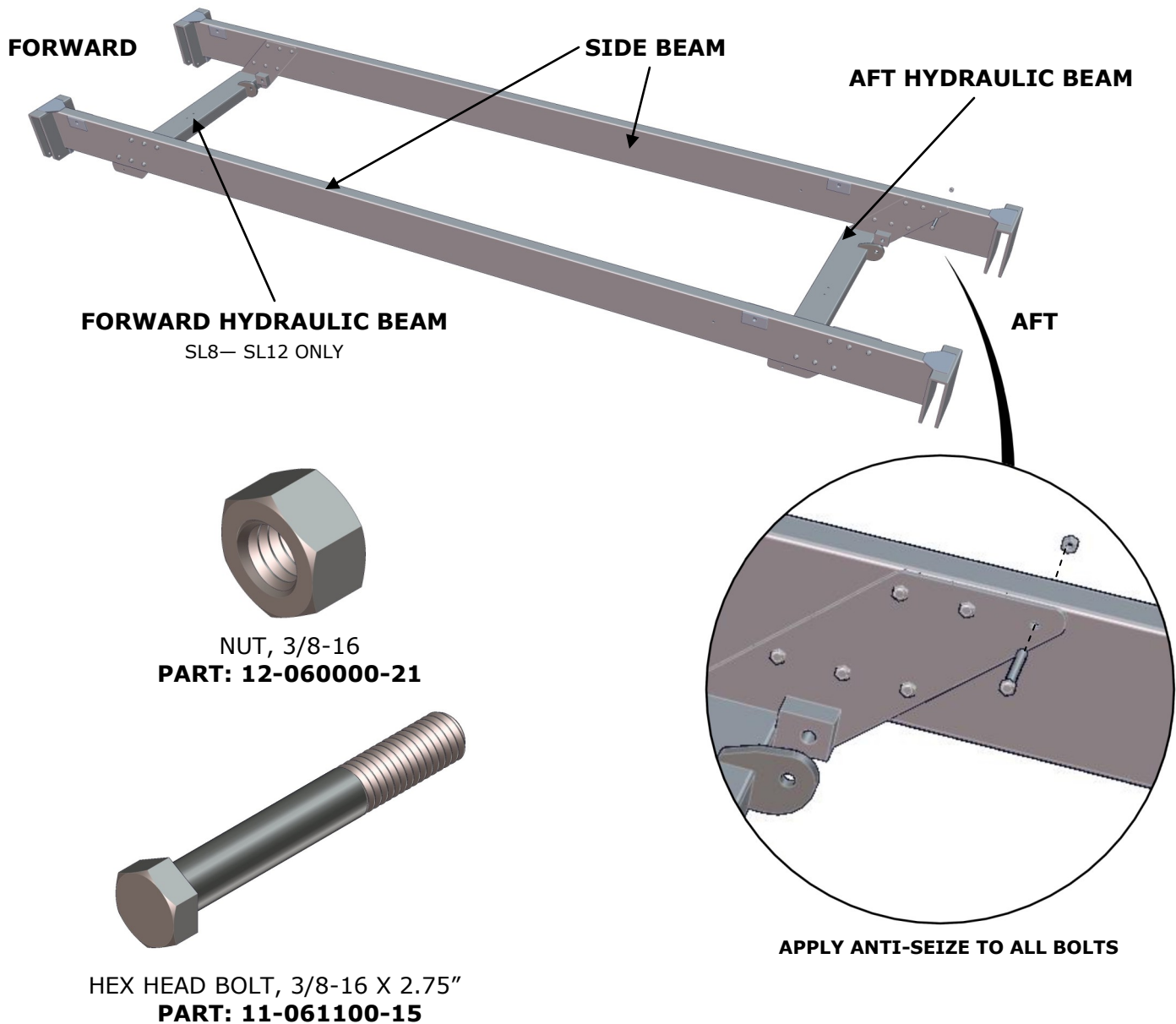
Before beginning assembly, find a nice flat area with room to work to set up your lift. Read ahead to the Installation Procedure to determine the best location to start. Assembly will require the following tools:

1. Wrenches, adjustable wrenches and/or socket wrenches (9/16")
  2. Marine Grease (for stainless pivot pins)
  3. Needle nose Pliers (for cotter pins)
  4. Hammer
  5. Measuring tape (for locating side beams on cross beams).
  6. Anti-seize (for fastener threads)
- SunStream recommends Loctite Anti-Seize w/copper Part Number 690180

### **NOTICE**

**NOTE: Discard all packaging bolts. Do not use to assemble lift.**

## Step 1



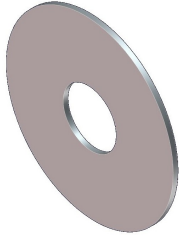
# Step 2

ASSEMBLY FOR SL4, SL6 & SL7 (2 CYLINDER LIFTS)



3/4" STAINLESS WASHER  
**PART: 13-160001-13**

1" STAINLESS WASHER  
**PART: 13-120000-59**



3/4" PLASTIC WASHER  
**PART: 13-120000-10**

1" PLASTIC WASHER  
**13-160002-27**



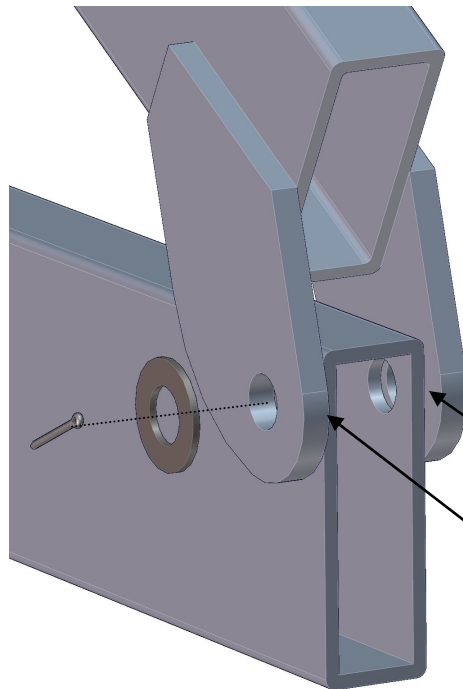
COTTER PIN  
**PART: 14-000001-44**



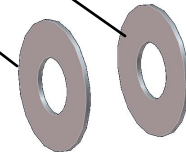
PIN 3/4" X 5"  
**PART: 14-122000-09**



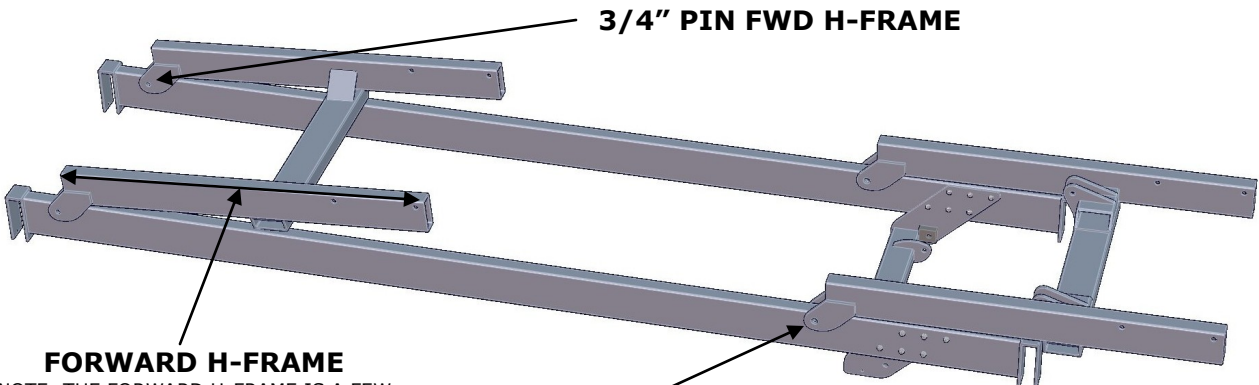
PIN 1" X 4.75"  
**PART: 14-122000-09**



**APPLY MARINE GREASE TO ALL PINS**



**PLASTIC WASHERS**  
BETWEEN SIDE BEAM AND H-FRAME LUGS



**3/4" PIN FWD H-FRAME**

**FORWARD H-FRAME**

NOTE: THE FORWARD H-FRAME IS A FEW INCHES **LONGER** THAN THE REAR H-FRAME

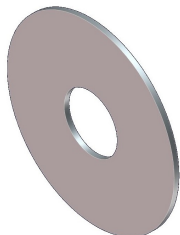
**1" PIN REAR H-FRAME**

## Step 2 continued

### ASSEMBLY FOR SL8 SL10 & SL12 (4 CYLINDER LIFTS)



3/4" STAINLESS WASHER  
**PART: 13-160001-13**



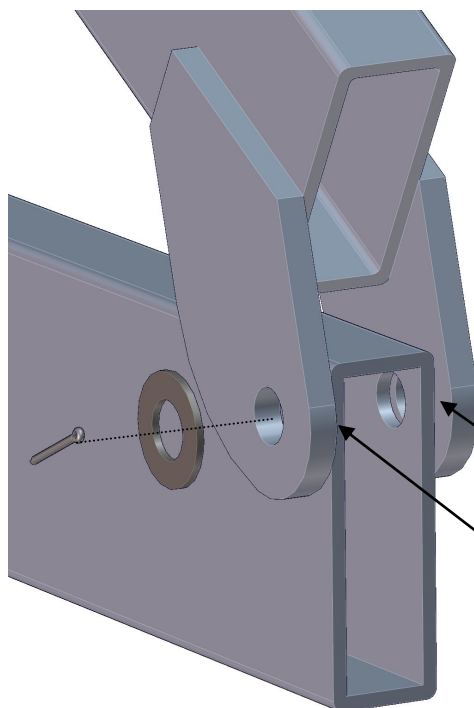
3/4" PLASTIC WASHER  
**PART: 13-120000-10**



COTTER PIN  
**PART: 14-000001-44**

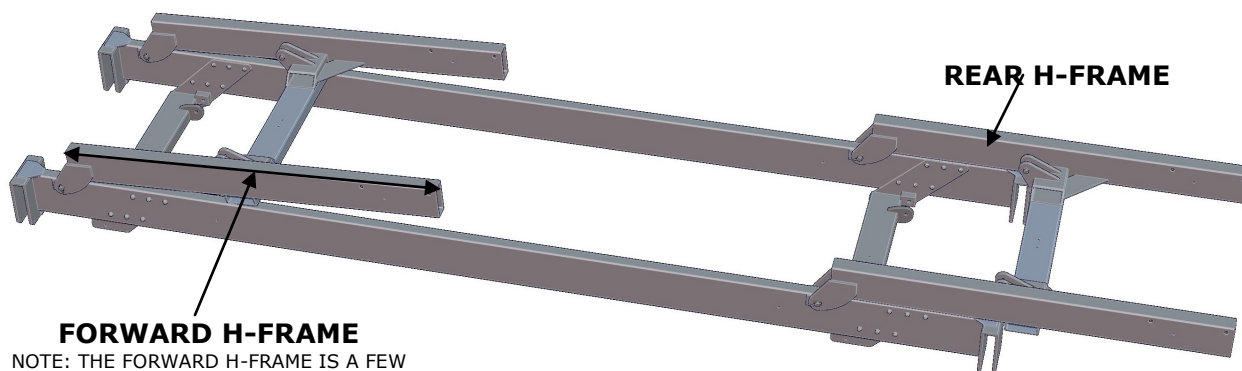


PIN 3/4" X 5"  
**PART: 14-122000-09**



**APPLY MARINE GREASE TO ALL PINS**

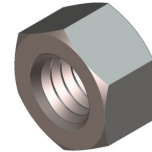
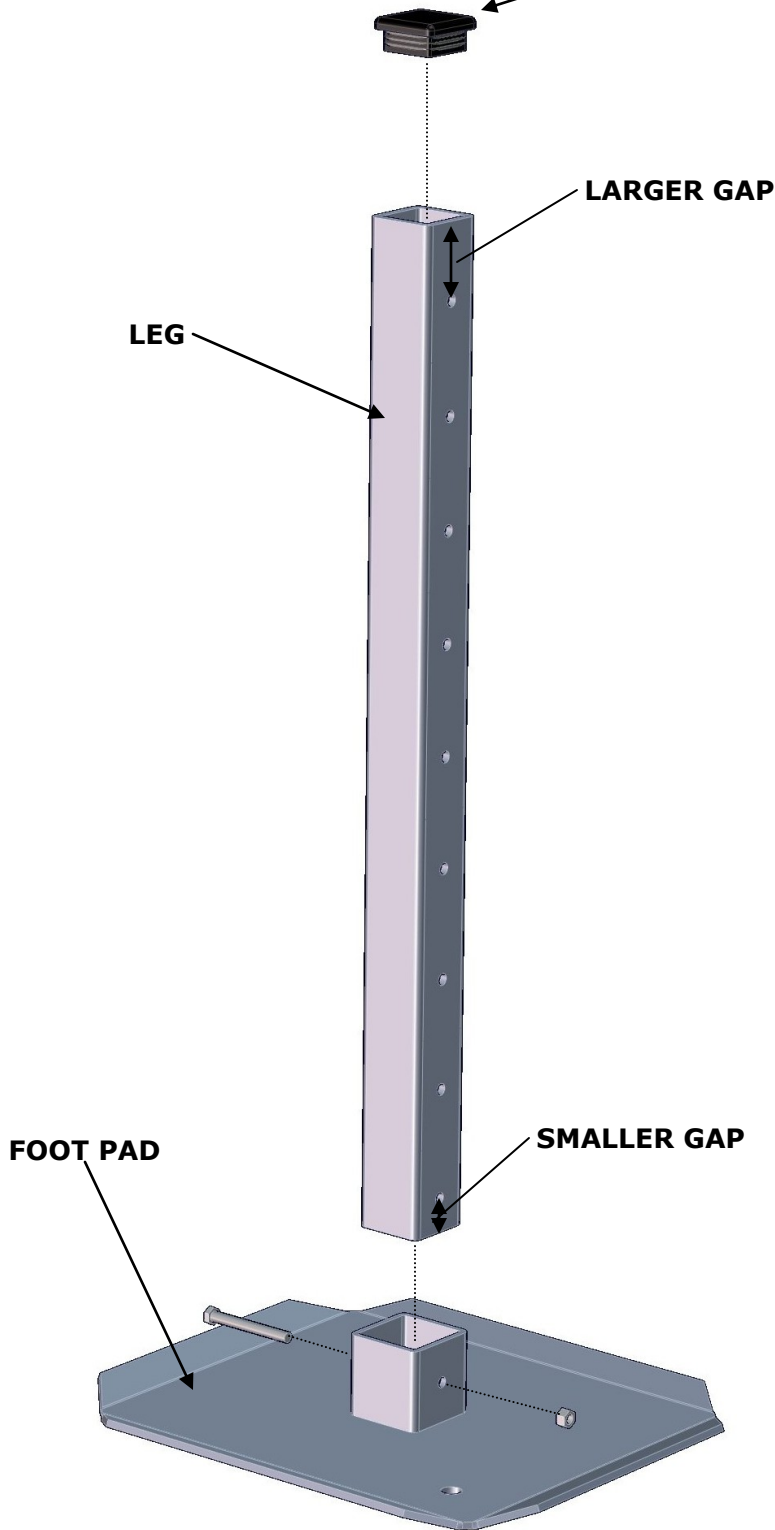
**PLASTIC WASHERS**  
BETWEEN SIDE BEAM AND H-FRAME LUGS



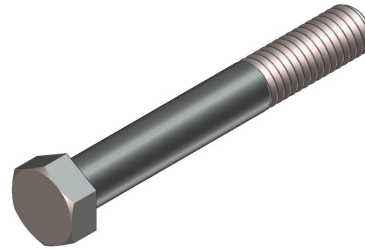
**FORWARD H-FRAME**  
NOTE: THE FORWARD H-FRAME IS A FEW  
INCHES **LONGER** THAN THE REAR H-FRAME

# Step 3

**NOTE:** INSTALL CAP AFTER LEG IS TRIMMED TO FINAL HEIGHT.



NUT, 3/8-16  
**PART: 12-060000-21**



HEX HEAD BOLT, 3/8-16 X 3.5"  
**PART: 11-061400-17**



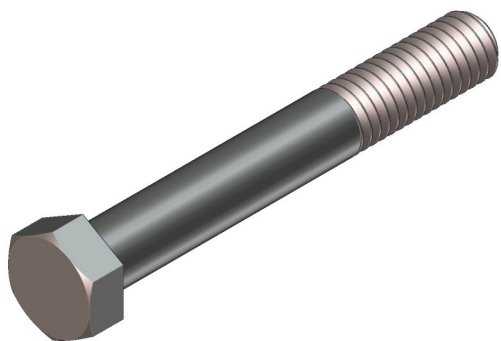
LEG CAP  
**PART: 19-000000-77**

**APPLY ANTI-SEIZE TO ALL BOLTS**

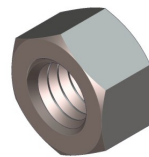
LEGS	
2 FT (24")	SA-LR2
4 FT (48")	SA-LR4
6 FT (72")	SA-LR6
8 FT (96")	SA-LR8
12 FT (144")	SA-LR12
16 FT (192")	SA-LR16
24 FT (288")	SA-LR24



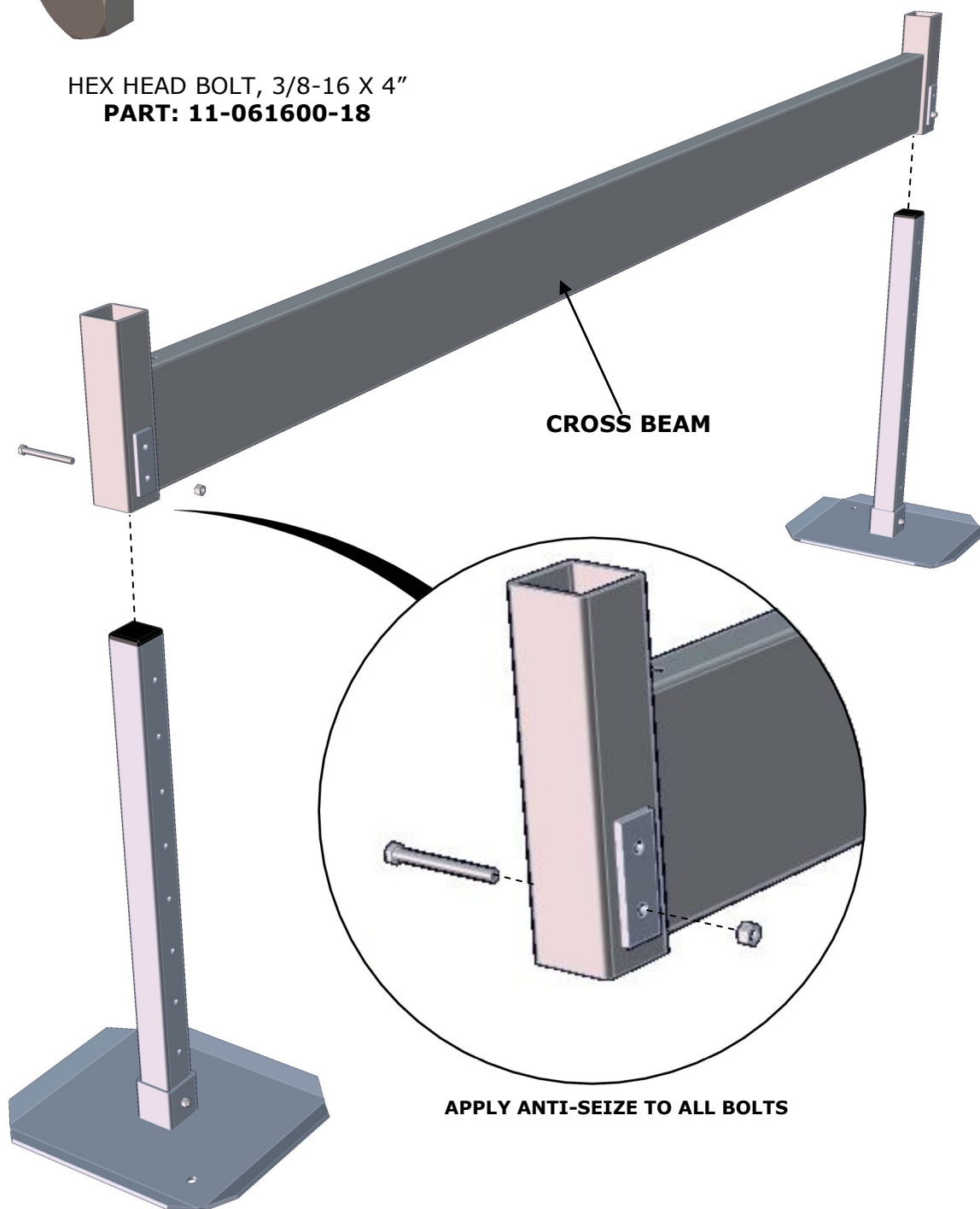
# Step 4



HEX HEAD BOLT, 3/8-16 X 4"  
**PART: 11-061600-18**



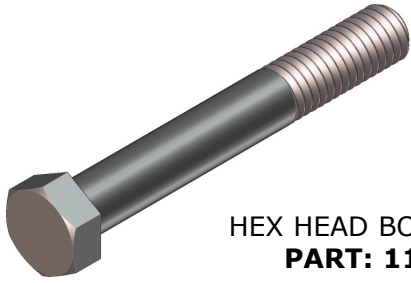
NUT, 3/8-16  
**PART: 12-060000-21**



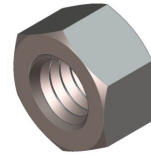
**CROSS BEAM**

**APPLY ANTI-SEIZE TO ALL BOLTS**

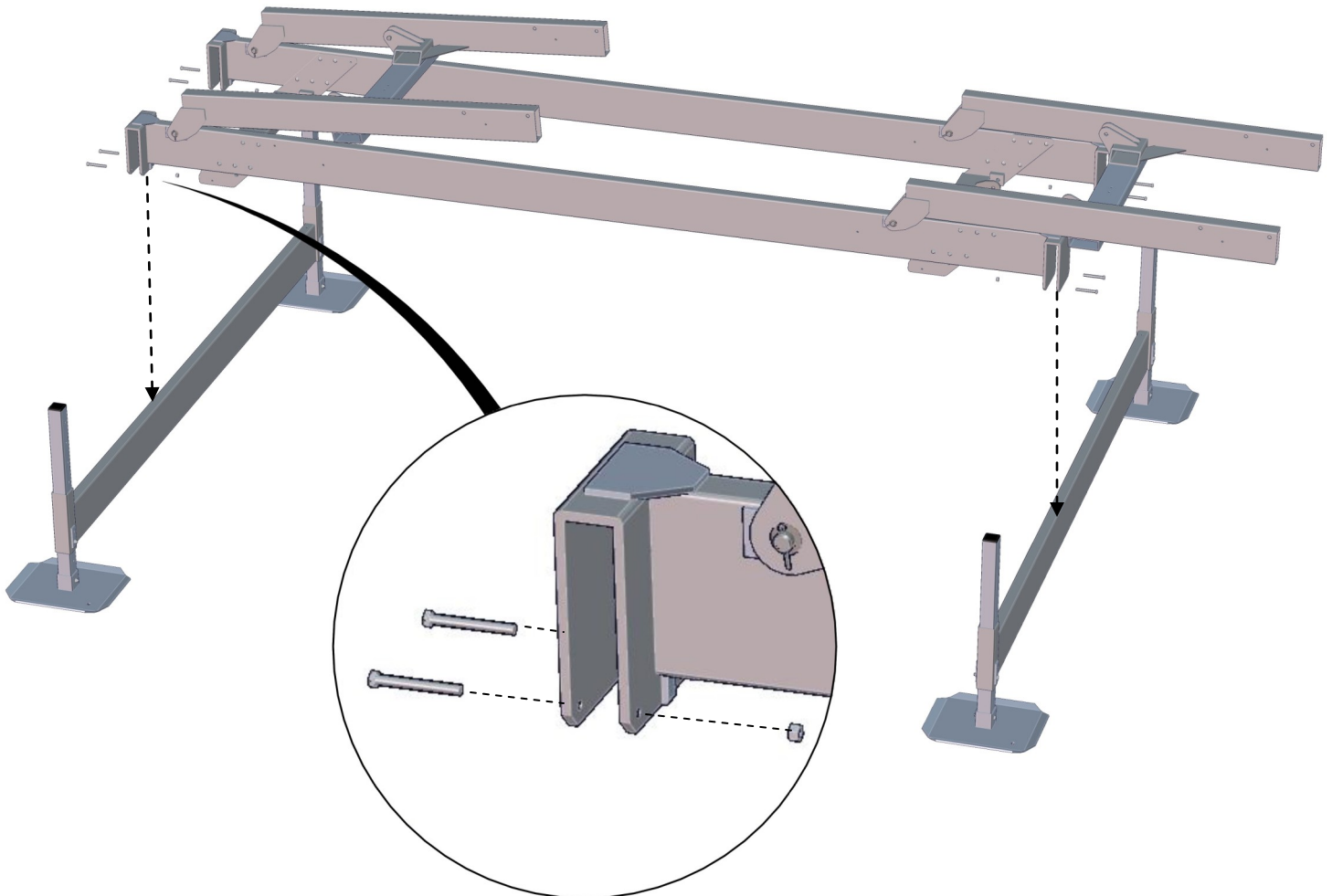
# Step 5



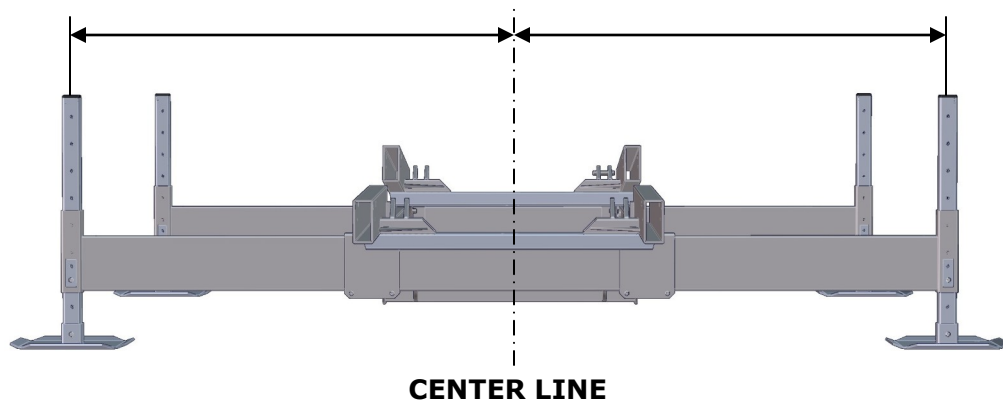
HEX HEAD BOLT, 3/8-16 X 3.5"  
**PART: 11-061400-17**



NUT, 3/8-16  
**PART: 12-060000-21**



**APPLY ANTI-SEIZE TO ALL BOLTS**



# Step 6



3/4" STAINLESS WASHER  
**PART: 13-160001-13**



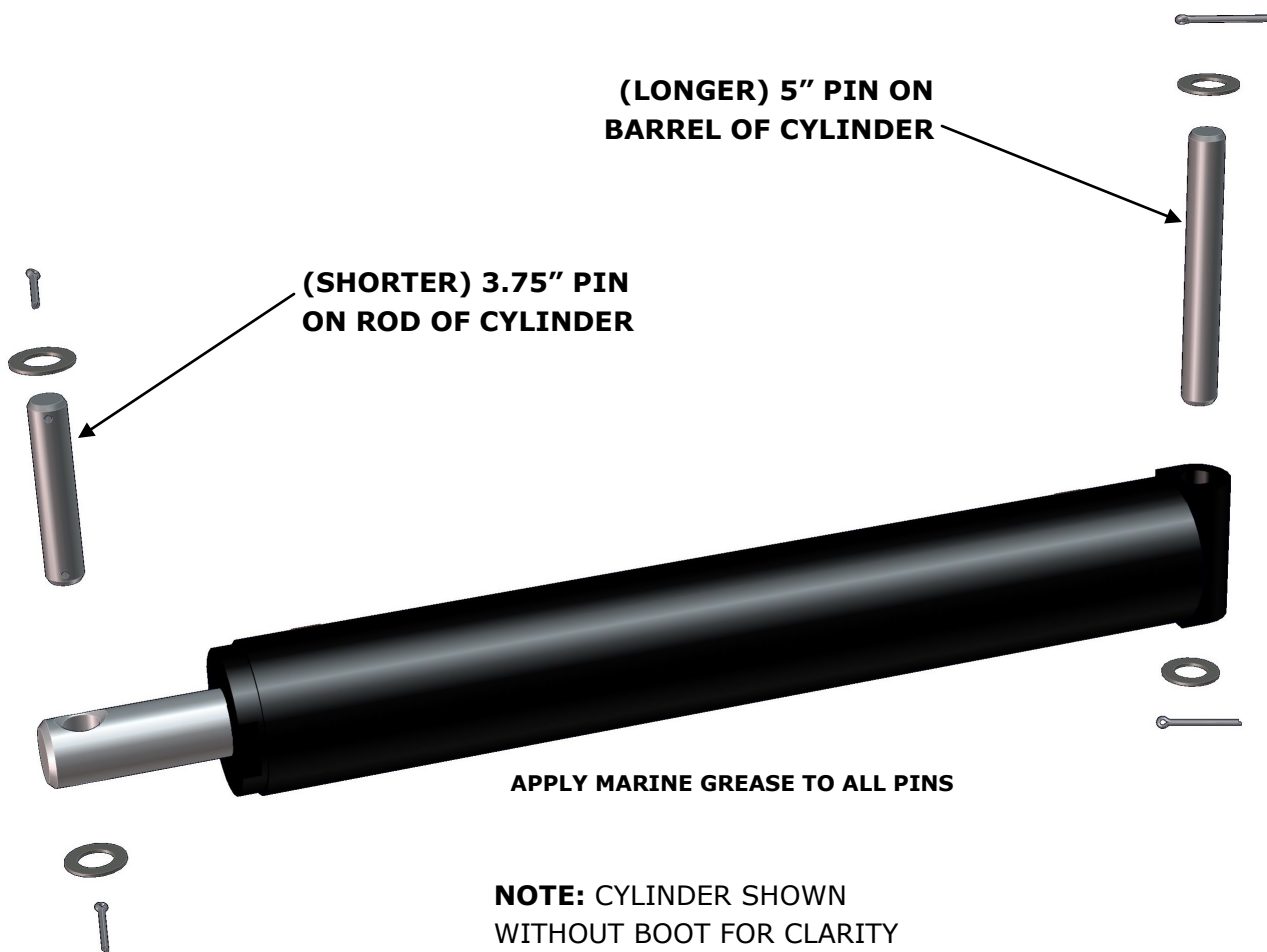
3/4" X 3.75" PIN  
**PART: 14-121500-08**



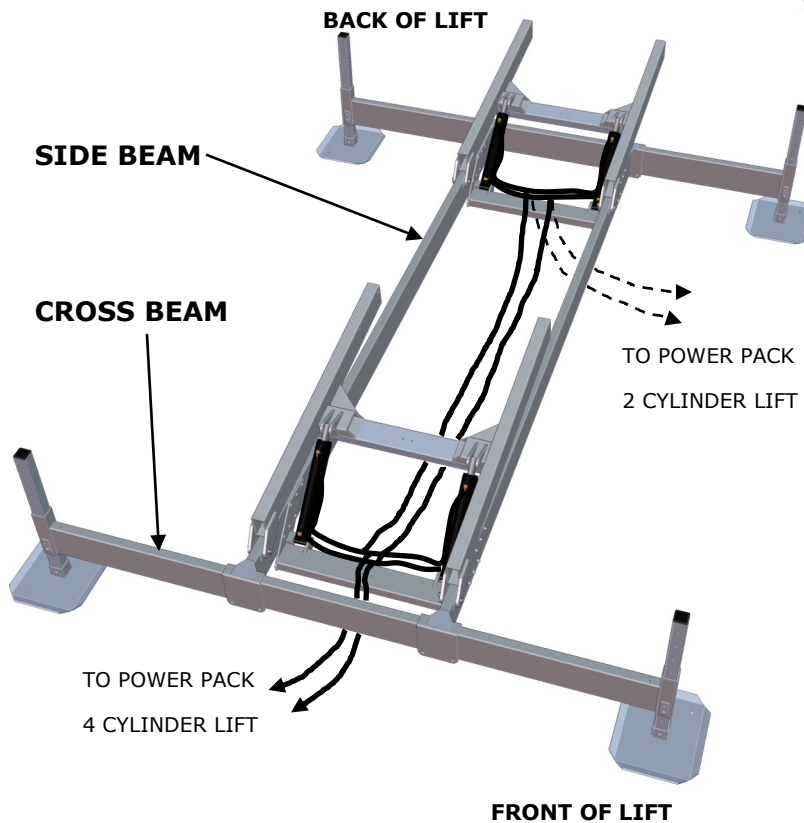
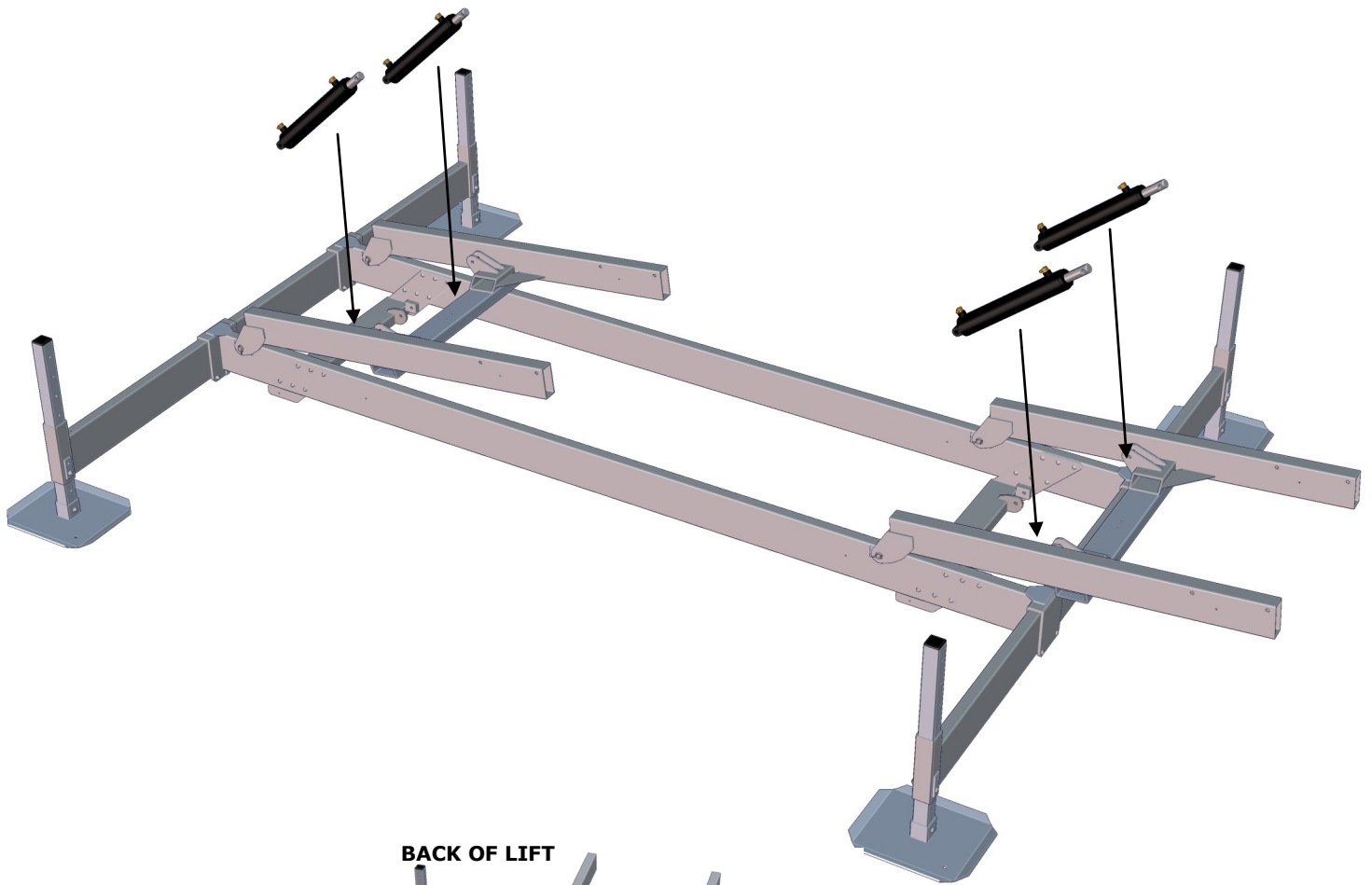
COTTER PIN  
**PART: 14-000001-44**



3/4" X 5.00" PIN  
**PART: 14-122000-09**



## Step 6 continued



### HOSE ROUTING

**4 CYLINDER LIFTS:** HOSES TO BE ROUTED TO THE FRONT OF LIFT. HOSES TO BE ROUTED UNDERNEATH CROSS BEAM, SIDE BEAM AND H-FRAMES TO AVOID ANY POSSIBLE PINCH POINTS.

**2 CYLINDER LIFTS:** HOSES TO BE ROUTED TO DOCK SIDE UNDER CROSS BEAM, SIDE BEAM AND H-FRAME TO AVOID ANY POSSIBLE PINCH POINTS

**NOTE:** CYLINDERS SHOWN WITHOUT BOOTS FOR CLARITY

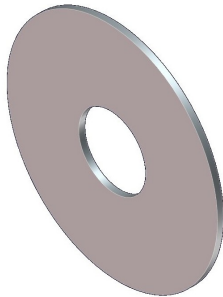
# Step 7



3/4" STAINLESS WASHER  
**PART: 13-160001-13**



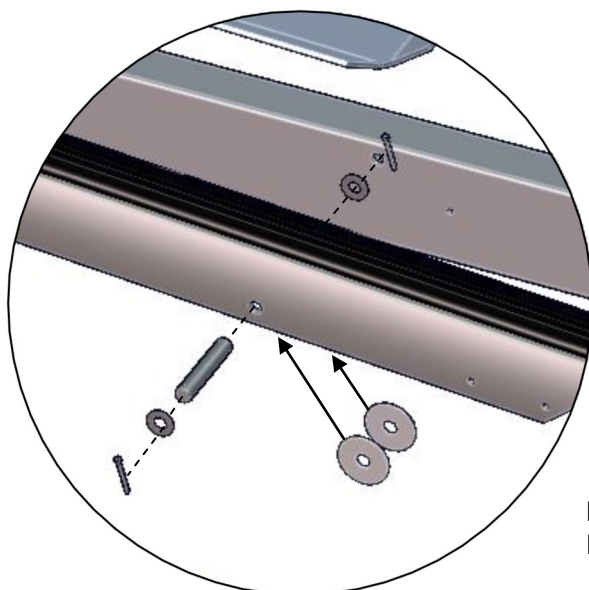
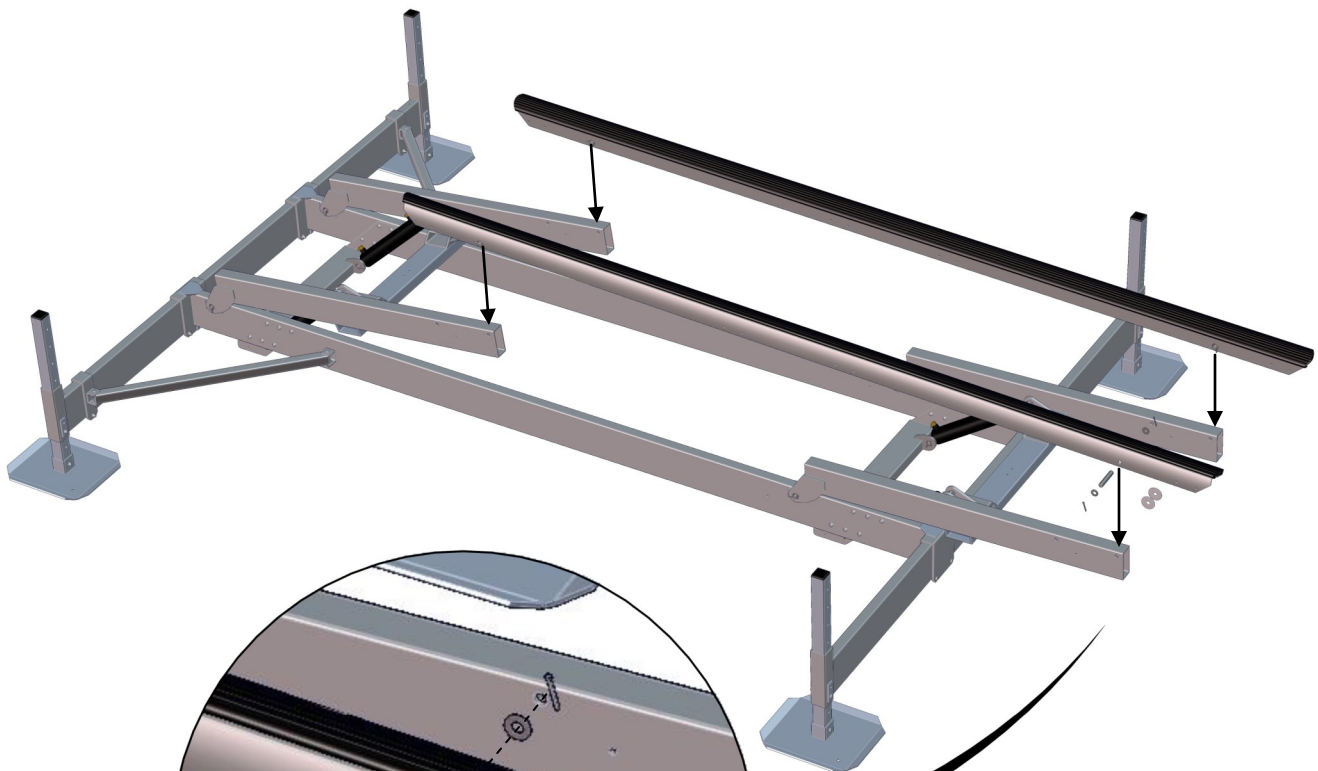
3/4" X 4.48 PIN  
**PART: 14-121703-07**



3/4" PLASTIC WASHER  
**PART: 13-120000-10**



COTTER PIN  
**PART: 14-000001-44**



**PLASTIC WASHERS**  
BETWEEN BUNK AND H-FRAME

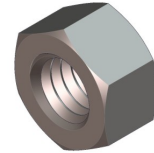
**APPLY MARINE GREASE TO ALL PINS**

# Step 8

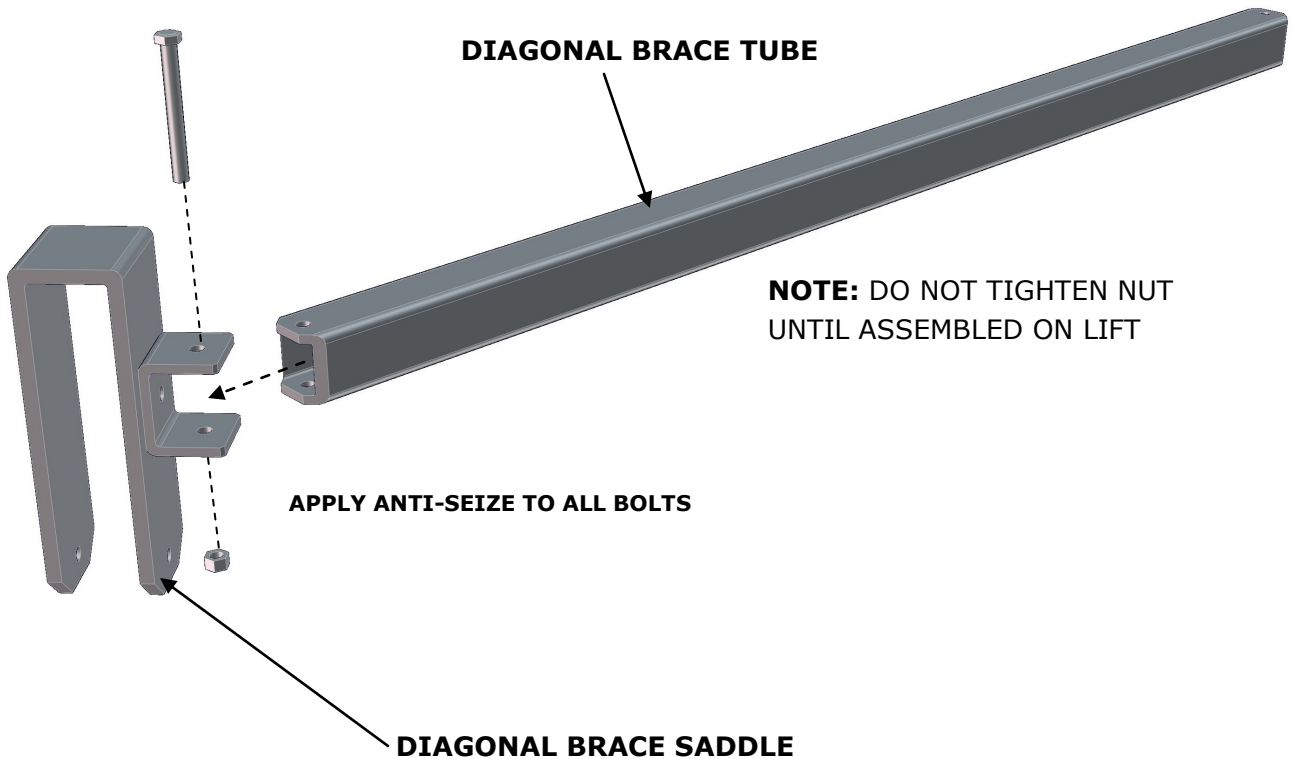
**SL7012, SL8012, SL10014 & SL12016 ONLY**



HEX HEAD BOLT, 3/8-16 X 3.5"  
**PART: 11-061400-17**



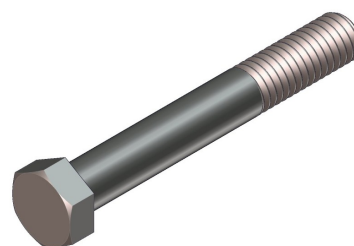
NUT, 3/8-16  
**PART: 12-060000-21**



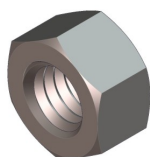
## Step 8 continued



HEX HEAD BOLT, 3/8-16 X 3.5"  
**PART: 11-061400-17**



HEX HEAD BOLT, 3/8-16 X 2.75"  
**PART: 11-061100-15**



NUT, 3/8-16  
**PART: 12-060000-21**

**NOTE:** ALL COMPONENTS ABOVE  
SIDE BEAMS REMOVED FOR CLARITY

**FRONT OF LIFT**

**AFT OF LIFT**

**3.5" BOLT**

**2.75" BOLT**

**DIAGONAL BRACE MOUNT**

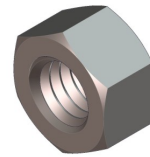
**APPLY ANTI-SEIZE TO ALL BOLTS**



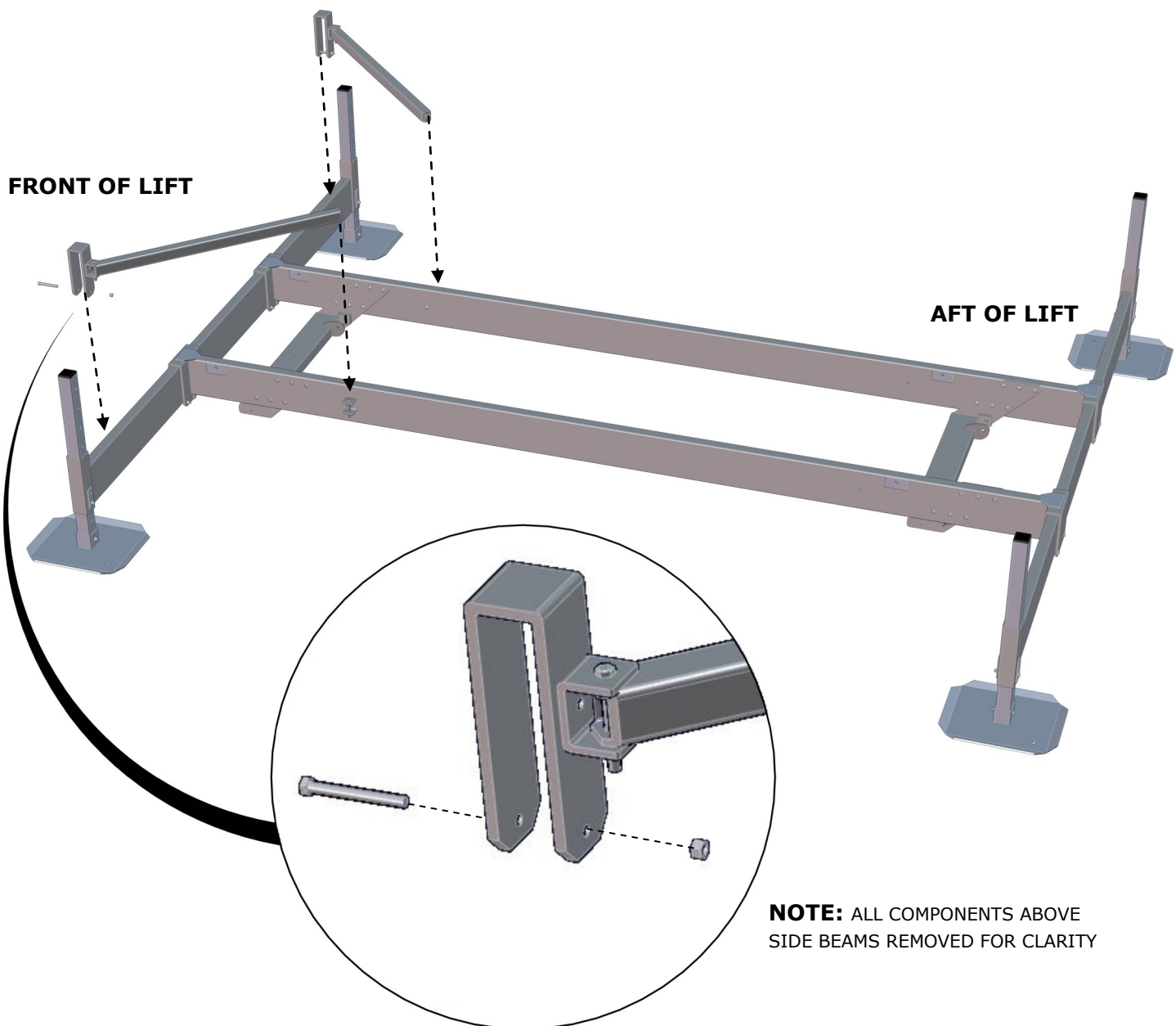
## Step 8 continued



HEX HEAD BOLT, 3/8-16 X 3.5"  
**PART: 11-061400-17**



NUT, 3/8-16  
**PART: 12-060000-21**



**APPLY ANTI-SEIZE TO ALL BOLTS**



# Step 9

## Tri toon deck Assembly

### SL7017 PAR OR SS-P3BK

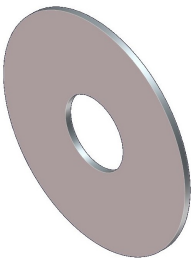
TRI-TOON DECK ALSO COMPATIBLE WITH SL6012AR. THE DECK CAN BE MODIFIED TO FUNCTION WITH THE SL7012ARW, SL8012ARW AND SL10014ARW, THIS REQUIRES MODIFICATION TO DECK CROSS BEAMS.



3/4" STAINLESS WASHER  
**PART: 13-160001-13**



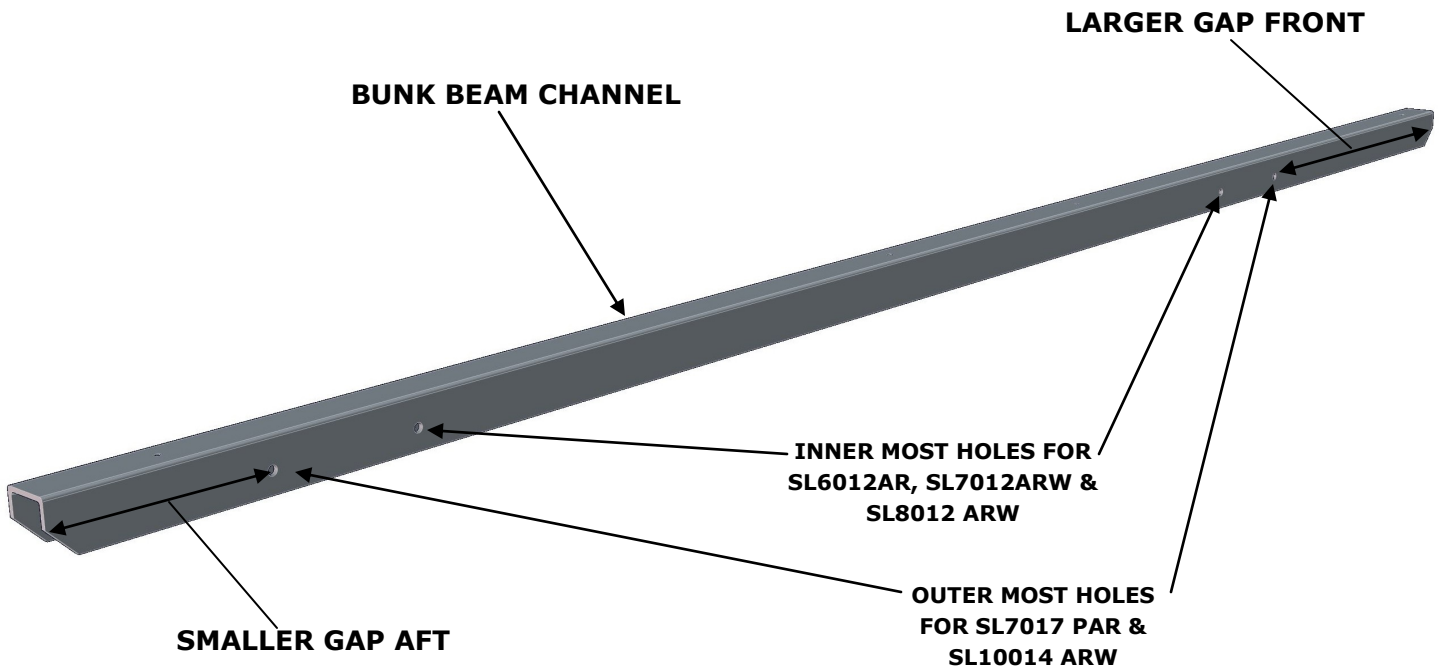
PIN 3/4" X 5"  
**PART: 14-122000-09**



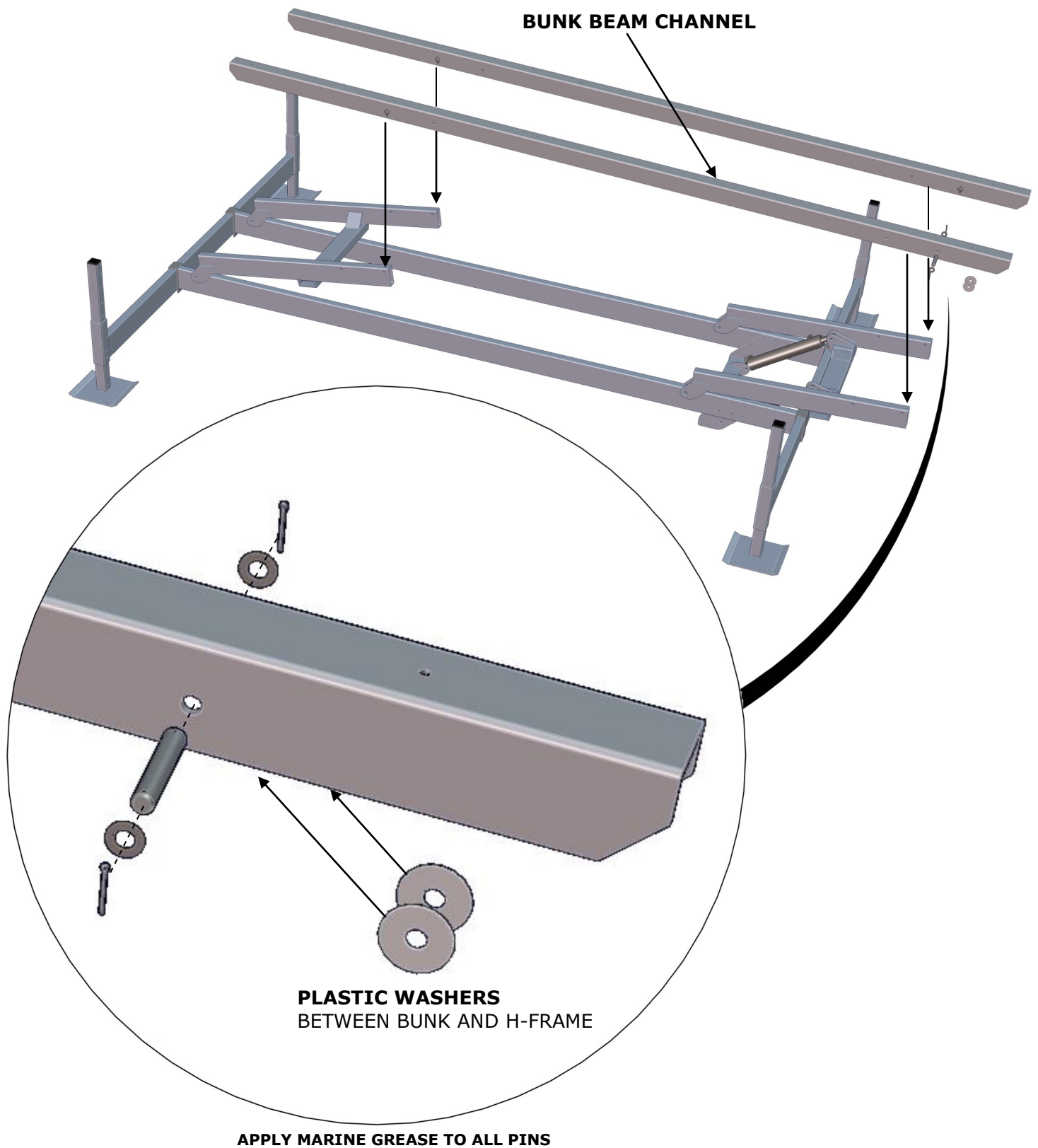
3/4" PLASTIC WASHER  
**PART: 13-120000-10**



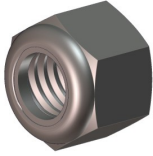
COTTER PIN  
**PART: 14-000001-44**



## Step 9 continued



# Step 10



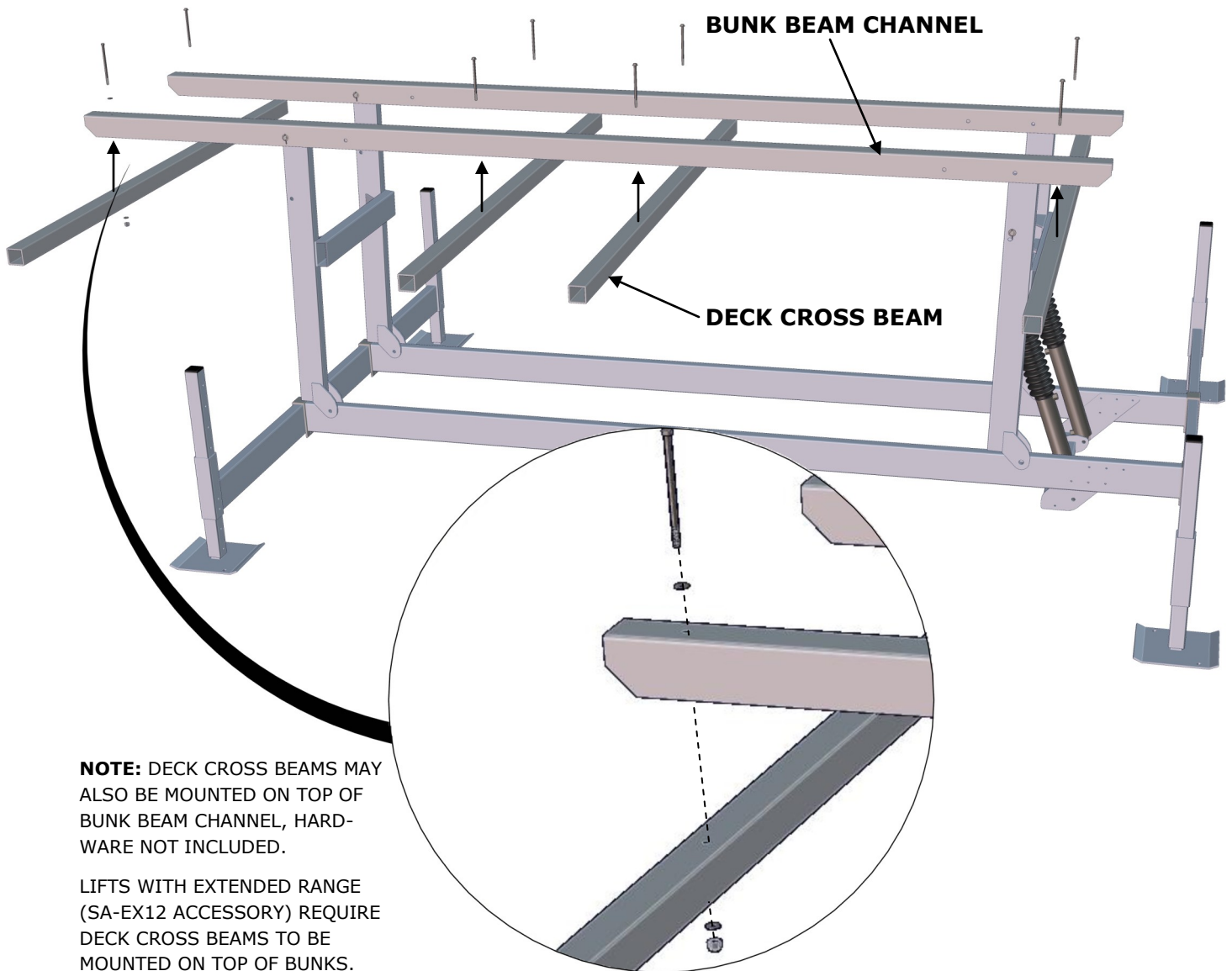
NUT, NYLOK 3/8-16  
**PART: 12-060000-22**



HEX HEAD BOLT, 3/8-16 X 8"  
**PART: 111168**



WASHER 3/8"  
**PART: 13-060000-23**



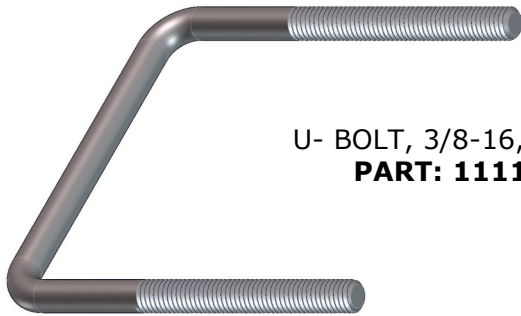
**NOTE:** DECK CROSS BEAMS MAY ALSO BE MOUNTED ON TOP OF BUNK BEAM CHANNEL, HARDWARE NOT INCLUDED.

LIFTS WITH EXTENDED RANGE (SA-EX12 ACCESSORY) REQUIRE DECK CROSS BEAMS TO BE MOUNTED ON TOP OF BUNKS.

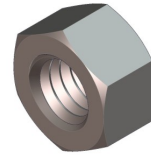
ADDITIONAL 13/32 HOLES REQUIRED TO MOUNT ON SL7012ARW, SL8012ARW & SL10014ARW.

**APPLY ANTI-SEIZE TO ALL BOLTS**

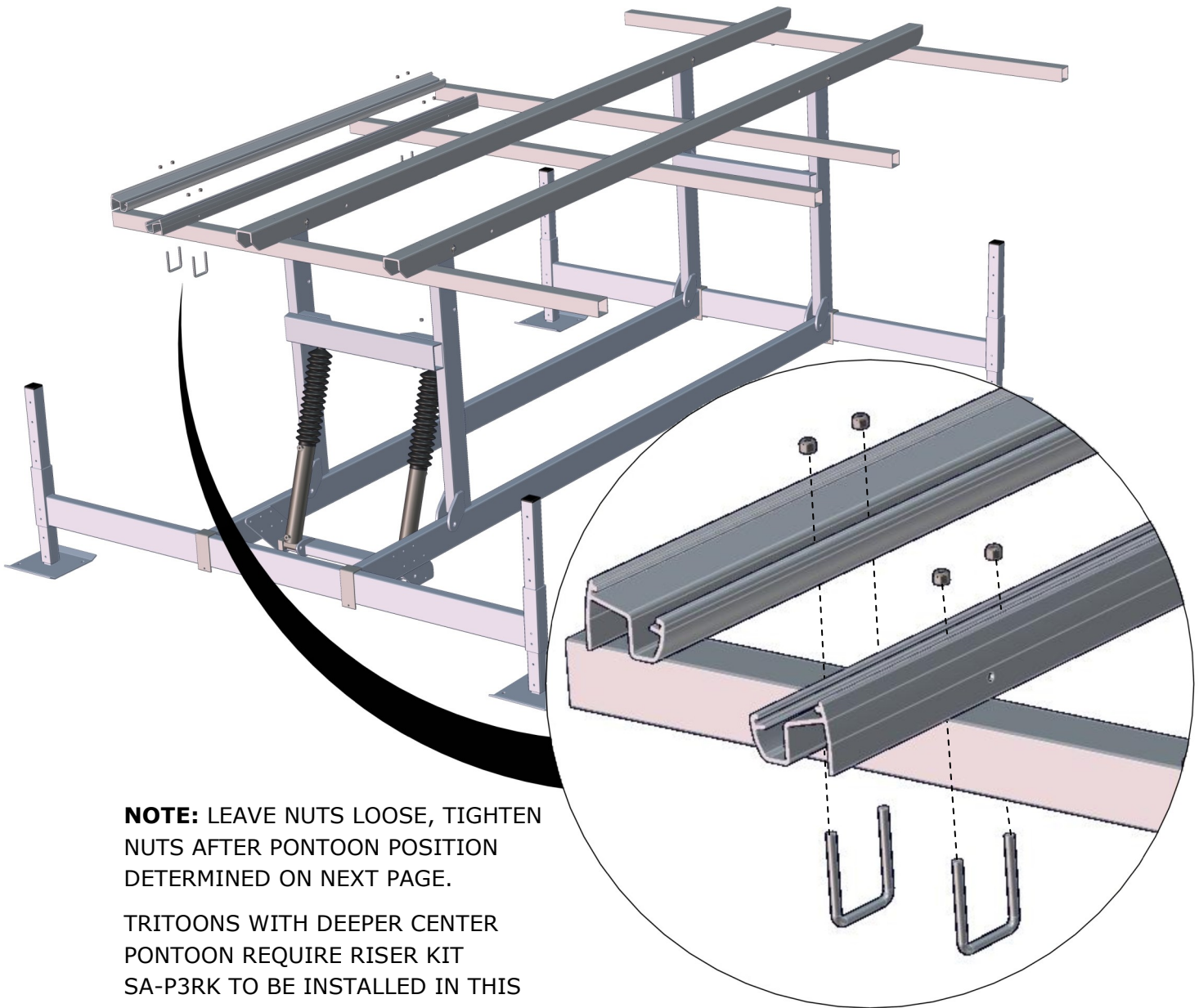
# Step 11



U- BOLT, 3/8-16, 3" x 4"  
**PART: 111166**



NUT, 3/8-16  
**PART: 12-060000-21**



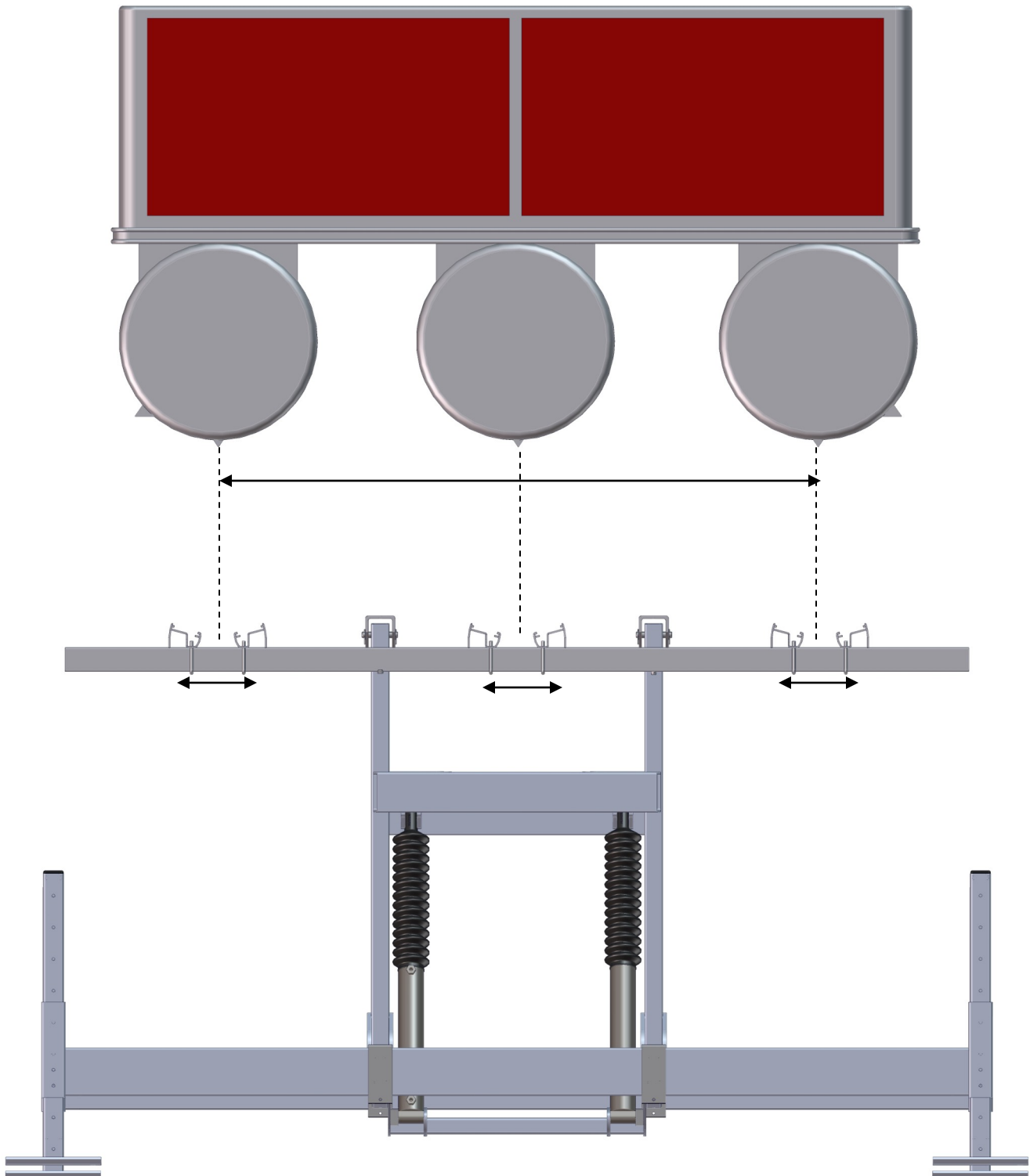
**NOTE:** LEAVE NUTS LOOSE, TIGHTEN NUTS AFTER PONTOON POSITION DETERMINED ON NEXT PAGE.

TRITOONS WITH DEEPER CENTER PONTOON REQUIRE RISER KIT SA-P3RK TO BE INSTALLED IN THIS STEP.

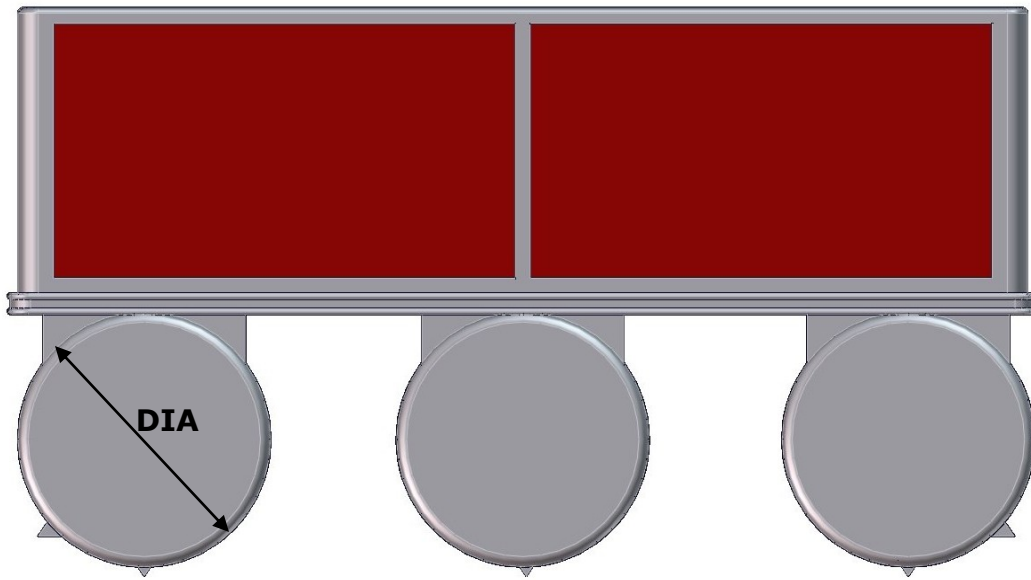
**APPLY ANTI-SEIZE TO ALL BOLTS**

## Step 11 continued

**NOTE:** MEASURE KEEL TO KEEL ON PONTOON BOAT. SLIDE BUNKS TO MATCH CENTER. SEE NEXT PAGE FOR PONTOON DIAMETER BUNK SPACING RECOMMENDATIONS.

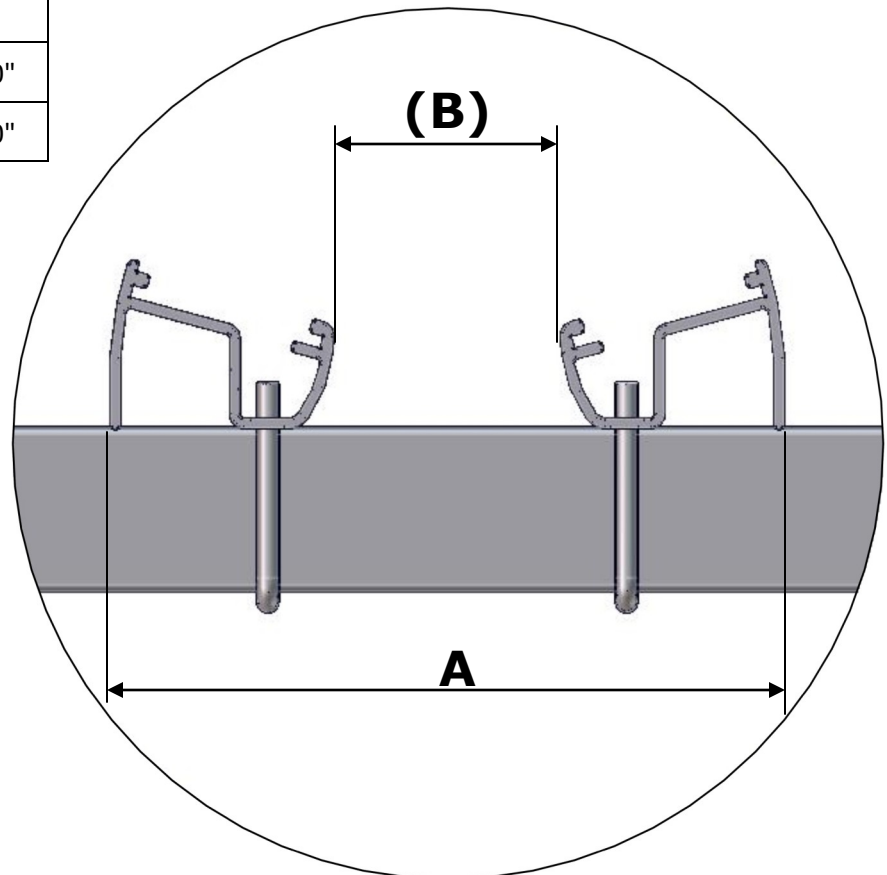


## Step 11 continued

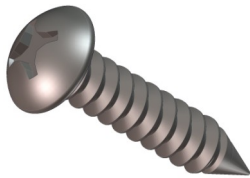
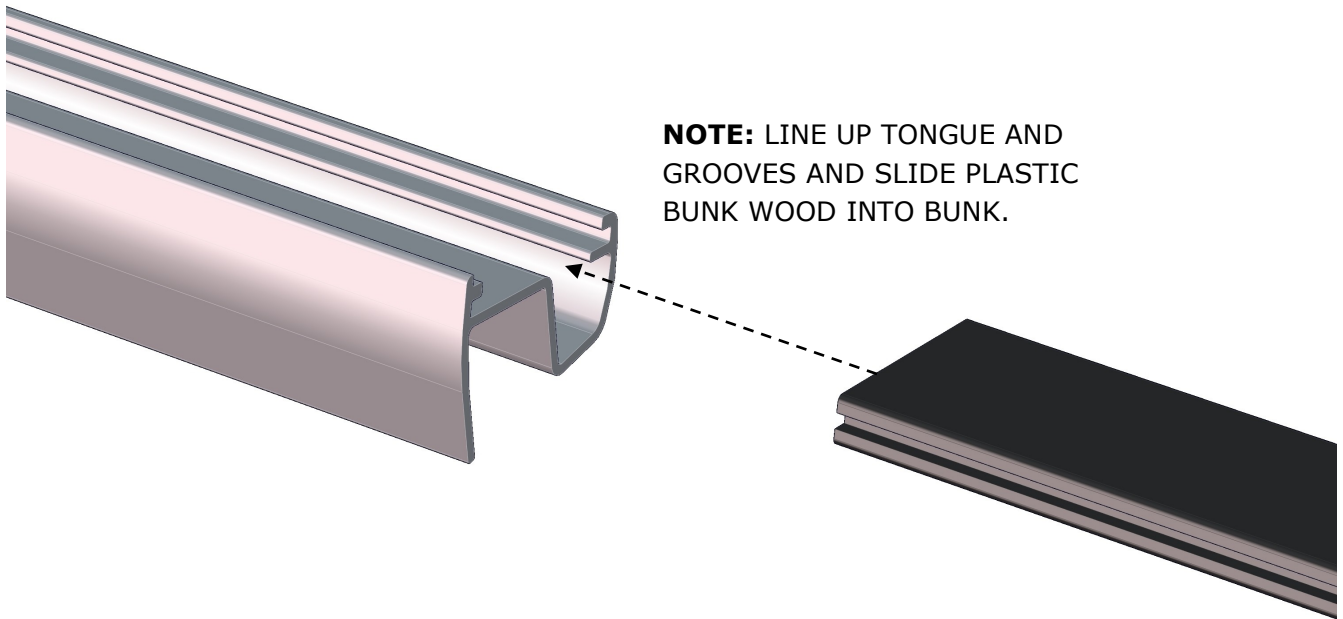


### RECOMMENDED SETTINGS

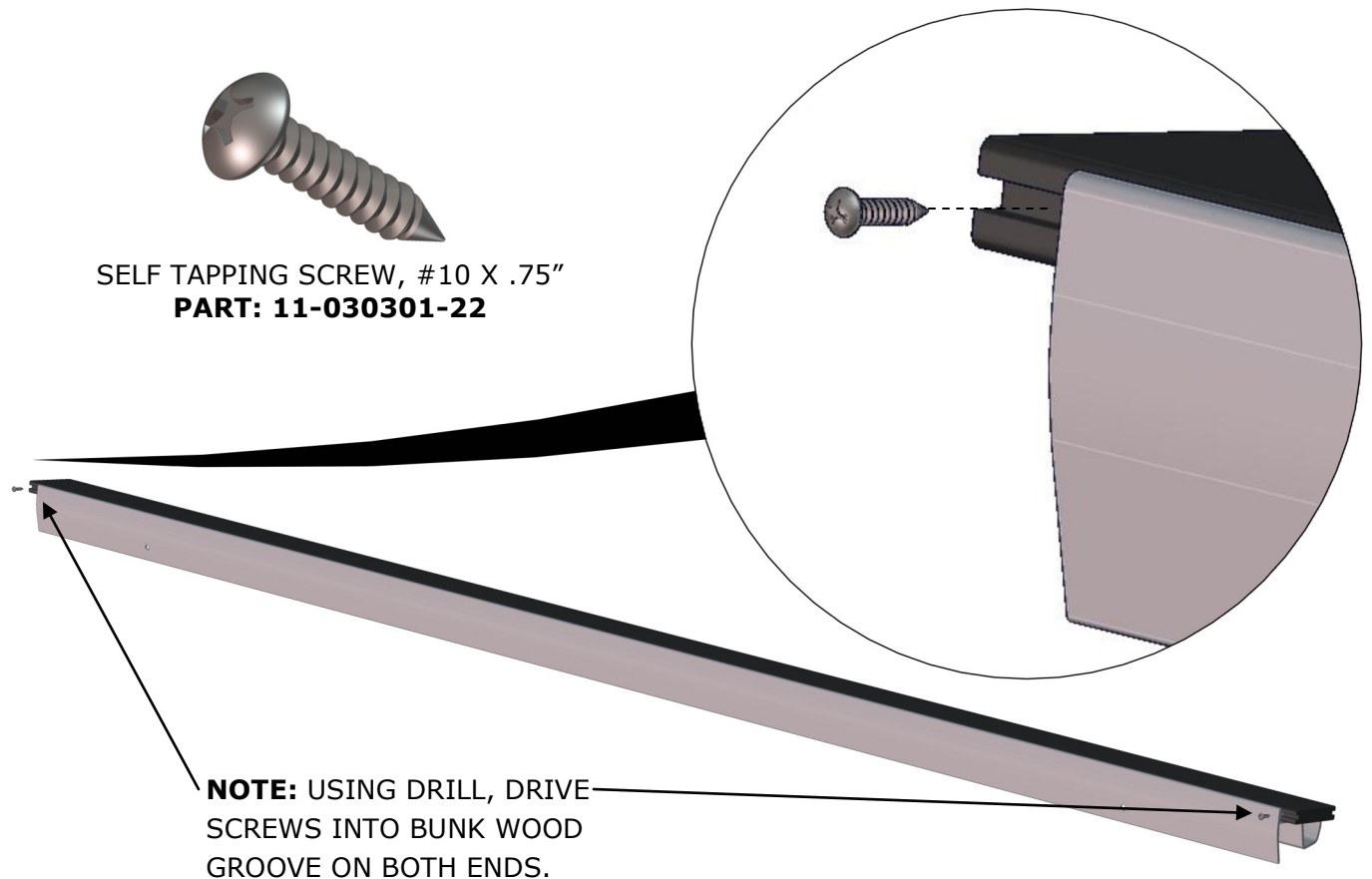
DIA	A	B
21" - 25"	11.15"	3.00"
25" - 30"	12.15"	4.00"



# Step 12



SELF TAPPING SCREW, #10 X .75"  
**PART: 11-030301-22**

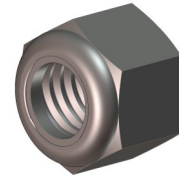




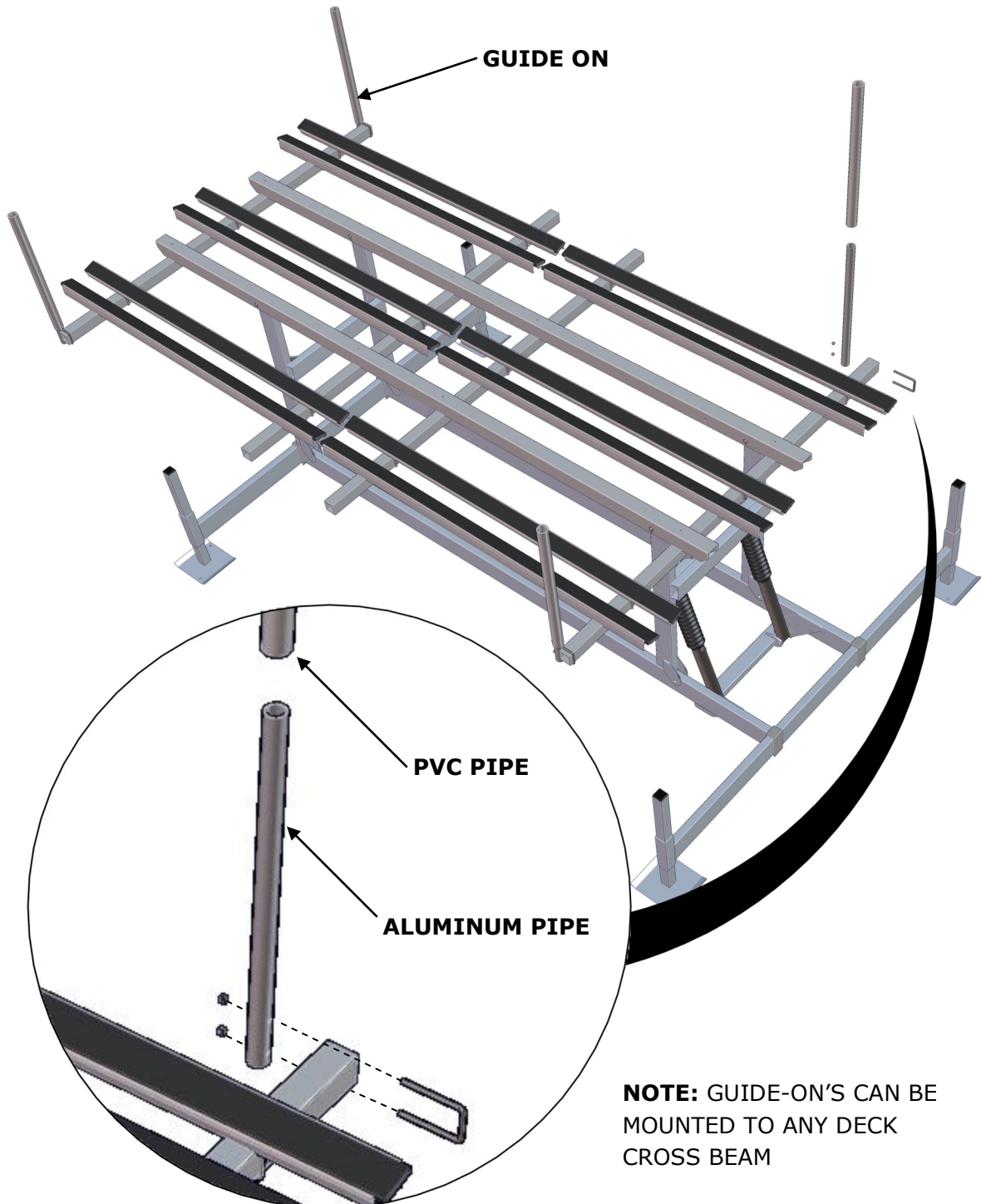
# Step 13



U-BOLT, 3/8-16, 3" X 5.75"  
**PART: 111167**



NUT, NYLOK 3/8-16  
**PART: 12-060000-22**



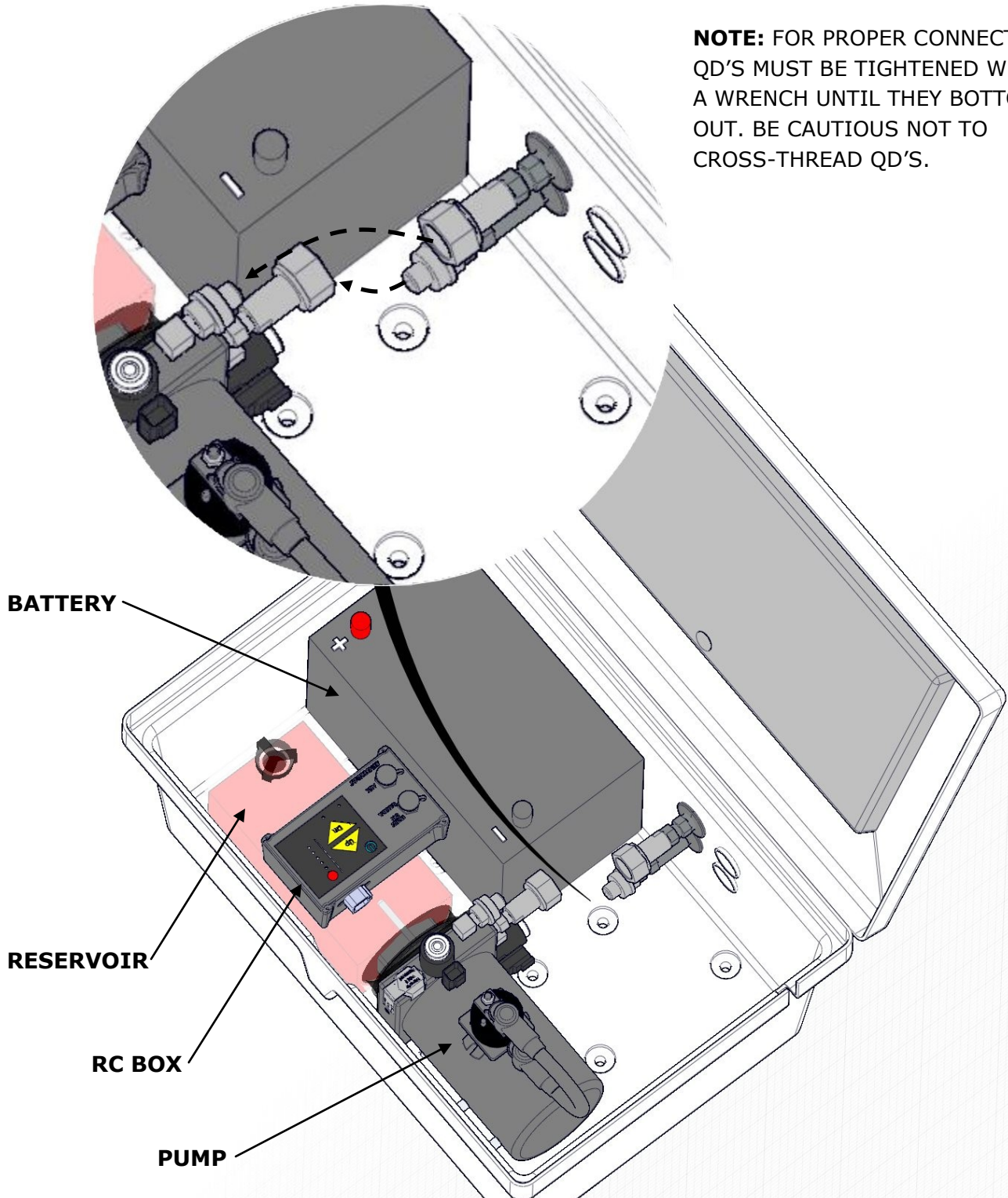
**NOTE:** GUIDE-ON'S CAN BE MOUNTED TO ANY DECK CROSS BEAM



# Step 14

## CONNECTING THE QD'S (QUICK DISCONNECTS)

**NOTE:** FOR PROPER CONNECTION, QD'S MUST BE TIGHTENED WITH A WRENCH UNTIL THEY BOTTOM OUT. BE CAUTIOUS NOT TO CROSS-THREAD QD'S.



## Assembly

### TIGHTEN ALL BOLTS & CHECK COTTER PINS



At this time you should verify that all cotter pins are properly bent to prevent removal, and check that all bolts (except leg bolts) are tight. Use caution not to over-tighten stainless fasteners.

### ZINCS



To ward off corrosion in salt or brackish water, it is essential that “sacrificial” zinc (s) are installed and maintained on your lift. Zinc is used as it has a higher voltage in water so the current will be more inclined to flow from it. The zinc becomes the corroding anode, while the lift serves as the cathode and is protected from corrosion.

**It is imperative that you replace the zinc on your lift regularly.** Because many external factors affect the rate at which a zinc deteriorates, Sunstream recommends that you check its condition frequently, and change the zinc every six months or more often if needed. Zincs on lifts in coastal areas near the ocean deteriorate more rapidly and need to be changed more frequently. **Effects of galvanic corrosion are not covered by your Sunstream warranty. Not maintaining zincs on the lift constitutes lack of proper maintenance and voids the Sunstream warranty.**

**Protect your investment with the proper steps.** To complete the electrical circuit, the zincs must be connected to the lift. Sunstream would be pleased to provide zinc replacement services; simply call to schedule. If replacing your own, Sunstream recommends using high-quality zincs that are available through the Sunstream service department and your authorized dealer.

### PREPARE HYDRAULIC SYSTEM

#### NOTICE

Be sure to route the hydraulic hoses under the Side Beam to prevent pinching by the lift when operating. Insert the hoses through the holes in the side of the Power Pack box, and connect to the pump using the quick-connect fittings.



**Important:** If the quick-connect fittings are difficult to attach, then you should relieve some of the pressure in the system by pushing in on the tip of the male hose connector (try pressing the tip against a clean hard surface). NOTE: Use eye protection! Use caution not to damage fitting.

This will release a small amount of fluid, which is O.K. Once the pressure has been released you should be able to connect both hoses. Remember that the hydraulic fluid in your SunLift is water-soluble and safe, and cleans up easily.



Lighting package only: If you installed the optional light bar on your lift, you should also route the light bar wire along with the hydraulic hoses to your Power Pack. Insert the wire through one of the holes in the side of the box, and plug in to the connectors marked 'Lights'. Use the plastic zip ties provided to attach the wire to the hydraulic hoses.



Caution: Use care when working inside the PowerPack box and around the battery, just as you would around your car or boat battery. A battery can explode and cause harm.

Finally, verify that the system is switched 'on'. The on/off switch is located inside the Power Pack on the side of the electrical control box.

### PREPARE HYDRAULIC SYSTEM

#### NOTICE

You are now ready to test your lift before you put it in the water! It is important that this be done for the first time without anything loaded on the lift.

#### NOTICE

Use the up/down switch inside the Power Pack to cycle the lift up and down. As you are doing this, pay close attention to the hydraulic hoses to see that they are not binding or being pinched by any part of the lift. Also, the lift should move up and down smoothly, without any undue stress or squeaking. If there is an excessive amount of squeaking or binding, check to see that all pivot pins are properly lubricated. After cycling the lift a couple of times, make one last inspection of the cotter pins and bolts to see that they are secure and tight. If applicable, also test the optional remote control and underwater lighting system. Important: Inspect all hoses carefully for leaks. Tighten leaky fittings if necessary. Do not over-tighten fittings.

## Installation

**⚠ DANGER** The Maximum Capacity for the Lift should be listed on the lift itself - if it is not, call Sunstream immediately to determine your lifts capacity. Operating the Lift with a greater amount of total weight may cause the lift and boat to become unstable and/or capsize, possibly causing property damage and/or and severe injury or death to individuals situated nearby.

**⚠ DANGER** Installation or use of the Lift in overly rigorous conditions may cause the Lift to become unstable and/or capsize, possibly causing property damage and/or severe injury or death to individuals situated nearby.

### LAUNCH THE LIFT



Before launching, you must consider at what depth the lift should sit in order to best utilize the lifting height, especially if your water level fluctuates during the year. Typically, the front and rear crossbeams of your Sun Lift should be between 24" to 48" below the surface of the water for the SL4010AR, SL6012AR & SL7017PAR And 30"-50" for the SL7012ARW, SL8012ARW & SL10014ARW. Attempt to maximize the lifting height, since over time wave action can damage the lift if the waves are contacting the boat.

**If your water level fluctuates during the year:**

Position the top of the Cross Beam 24" below the surface at the lowest water level. The SL4010AR, SL6012AR & SL7017PAR with 48" of lifting height will allow for about 24" of water fluctuation. The SL7012arw, SL8012arw & SL10014 Sun Lift with 60" of lifting height will allow for about 36" of water fluctuation.

**If your water level does not fluctuate:**

You can position the top of the cross beams anywhere between the 24" and 48" depth measurement, depending on how high you want your boat out of the water.

In preparation for launching the lift into the water, disconnect the hydraulic hoses (and optional light bar wire if applicable) from the Power Pack. Connect the hydraulic hoses to each other to protect the connectors and keep them clean during installation.

#### NOTICE

**A. To launch your lift:**

**1. 'Float' the lift into position using floatation.** In some cases, it may be necessary to employ a certified diver for this type of installation to make final underwater adjustments, and tighten all hardware. This is especially true if your leg lengths are 8 feet or longer, since deep water braces would be required. Check with your local dock builder or boatlift installer if you feel you need help. To perform this type of installation, you will need suitable flotation for the lift, which will hold it at the surface of the water while you position it and make final adjustments. We recommend a couple of 250 lb. Float bags. The flotation should be strapped tightly to the fore and aft 'H' frames of your lift.

#### NOTICE

If you have not already done so, insert the legs into the leg sleeves at all four corners, and attach the feet. Temporarily bolt the legs to their shallowest setting. The lift should be in the full down position prior to launching, and the hydraulic hoses disconnected from the Powerpack. Put the lift in the water, and float it to the approximate area where you would like it to sit. Note that if your legs are exceptionally long, it may be easier to insert them after the lift is placed in the water, as the entire structure will then be less cumbersome. Now remove the bolt holding each leg into position, and allow the leg to drop to the bottom. Bolt it into position using the nearest hole. Re-connect the hydraulic hoses to the Powerpack so you can use the power of the lift combined with the flotation of the barrels to level the lift (see next step).

After the braces are in place and all adjustments are complete, remove flotation.

## Installation

### LEVELING AND FINAL POSITION


#### NOTICE

##### A. Leveling the Sun Lift:

Once you have adjusted the lift in its final position, you must now ensure that it is level. To do this, use a suitable measuring device and measure the distance from the top of the Cross Beam to the water surface. The distance at each of the four corners of the lift should be within 2 inches of each other. If they are not, you will have to adjust the leg (s) up or down accordingly. Note the two holes in the leg sleeve allow you to adjust the leg in 2" increments.

##### B. (optional) Attach deep water braces (for leg lengths 8 feet and up):

If you have legs over 7 feet long, you will be required to attach deep water braces to stabilize and strengthen the structure underneath the water. Refer to the Deep Water Brace Kit instructions for details. Note that once these braces are attached, the legs are not easily adjusted, so make sure you are finished leveling before attaching braces.

 **C. Double check at this time that all bolts and nuts are tightened.** Also, if your area experiences high wind and waves, or if the underwater geography slopes to some degree where your lift sits, you may consider driving four 2 foot pieces of rebar (not provided) through the holes provided in the feet for added anchoring. **(Determine whether environmental or other laws prohibit or require a permit before penetrating the substrate.)**

**D.** For steep slope installations, pin down foot holes with 4 foot, 1/2 inch diameter rebar (not included).


### LIFT YOUR BOAT

#### DANGER

Note that the weight of the boat on the lift for the first time may cause it to settle. Therefore, great care and precaution should be taken when lifting for the first few times until you are certain the lift is stabilized. Make sure everyone in the immediate area is aware during this process, and is not in close proximity to the lift (especially not in the water near the lift!)

#### NOTICE

Position the boat by hand over the bunks with the transom about even or 12" - 18" behind the back of the bunk. Carefully bring the lift up until the bunks 'capture' the boat. If so, continue bringing the boat out of the water until it is about 1 foot above the surface. Stop the lift again and check the stability of the lift, particularly to see that it is remaining fairly level and will not topple over. Finally, continue lifting the boat while paying close attention to the positioning of the lift until it is in the full upright and over-center position.

 Remove the boat from the lift. Check to see that the lift is still level. If not, the leg(s) will need to be adjusted again accordingly. Two weeks after the installation, check to see that the lift is level as it may have settled over time. Adjust as needed. Inspect the lift level periodically as needed.

## Use and Maintenance

**Sunstream recommends an annual inspection of the SunLift by an authorized Sunstream Dealer or other qualified person.**



**For storage and off-season suggestions** be sure to prevent rainwater from accumulating in your boat if you plan to leave it on the lift for long term storage.

Rainwater accumulating in your bilge can quickly increase your gross weight over the lift capacity.

1. At all times, make sure that you adjust the height of the lift to limit wave action against the hull. Wave action will damage the lift and can take the boat off the lift.
2. We recommend disconnecting the Powerpack and storing it indoors for the winter if you are not planning on using the lift for prolonged periods. To do this, simply disconnect the hoses from your Powerpack by using the Quick Disconnects and connect the hoses together. This will ensure that threads and seals remain clean.  
Tip: If you have problems disconnecting the hoses from the Powerpack, use the depressurize feature on the RC. to relieve the pressure. Do not disconnect the hoses when lift is pressured against the upper or lower stops.
3. Booster-charge your battery using a 10A charger at the beginning and end of the season. A mid-season boost may be required for heavy use.
4. If your waterway freezes during the winter, you will need to remove your Sun Lift, as it will be damaged by ice flow.
5. When storing the boat, the lift must be in the upright over center gravity lock position for maximum safety. The over-center position will prevent the boat from lowering if you experience a hydraulics leak.
6. Your Sun Lift can be left in any position when not in use. Although we do recommend leaving the lift in the up position to prevent the bunks from becoming 'slimy', and to avoid creating a hidden underwater obstruction.

### **Battery Tips**

**Recommended Battery.** Use a 12V group 27 marine deep-cycle battery with a minimum reserve capacity of 160Ah (Amp hours). Reserve capacity is the most important feature.

**Battery Capacity:** The SunLift was tested to have a energy capacity of approximately 20 full cycles using a new battery with a reserve capacity of 160 Ah. However, try not to dip below 50% battery capacity, since the solar panel would have difficulty in recovering from such a deep draw.

**Solar Charging rate:** The following values are limits on full cycles (down and up) to keep battery capacity at steady state condition. The capacity of the battery will allow for additional cycles for any particular month. Table assumes all-day exposure with typical seasonal weather.

Max. Monthly Full Lifting Cycles (Down and Up) using a single solar panel (keeping steady state energy level)		
Month	Seattle (a northern cloudy city)	San Diego (A sunny southern city)
Jan	2 cycles	27 cycles
Feb	8	29
Mar	14	29
Apr	18	31
May	21	27
Jun	22	25
Jul	24	28
Aug	24	31
Sep	19	29
Oct	12	29
Nov	4	28
Dec	1	25

If your solar panel does not keep the battery charged try any of these options:

- Move your solar panel to an area with less obstructed sunlight.
- Add a second solar panel, or add an a/c charger.
- Booster charge your battery mid-season.
- Check cell water levels in battery. Top up if necessary with distilled water.

## **Remote Control**

Sometimes it may become necessary to re-program your remote transmitter. It is possible for the transmitter to de-program either due to loss of power (dead battery), or electrical interference.

If your remote will not work after reprogramming, remove back panel of transmitter and check battery.

### RC401series Programming Instructions

1. Switch RC Unit to \*ON\*
2. Push & Release RED program button 1 time.
3. Push transmitter \*UP\* BUTTON 3 times. (On third push, power unit should run). If not, repeat.

To Deprogram, hold RED program button for 15 seconds or more.  
(TIP: if lights are activated, you will hear click when deprogrammed).

# Troubleshooting

Problem	Possible Solution(s)
Lift does not operate with manual switch on RC box	<ul style="list-style-type: none"> <li>– Check power on RC box is on</li> <li>– Check battery voltage</li> <li>– Check all wires are connected to Solenoids on pump</li> </ul>
Lift does not operate with key fob transmitter buttons.	<ul style="list-style-type: none"> <li>– Check that lift operates with manual switches on RC box (see above)</li> <li>– Re-program key fob transmitter per instructions in RC manual</li> <li>– Check battery voltage in key fob transmitter</li> </ul>
Key fob transmitter has limited range	<ul style="list-style-type: none"> <li>– Check battery voltage in key fob transmitter</li> <li>– Hold transmitter in different location (over head, or different location in boat)</li> <li>– Proximity to cell phone towers, power lines and other electromagnetic interference can also reduce range.</li> </ul>
Battery does not keep a charge	<ul style="list-style-type: none"> <li>– Check battery fluid level</li> <li>– Verify charger and/or solar connector properly plugged in</li> <li>– Verify solar panel getting direct sun light</li> </ul>
Cannot or difficult to connect hoses	<ul style="list-style-type: none"> <li>– Depressurize system via RC box</li> <li>– Use wrench to connect QD's</li> <li>– Check for any debris in hose threads</li> </ul>
Fluid found in bottom of Power Pack	<ul style="list-style-type: none"> <li>– On a new lift, sometimes air in the system expands and causes fluid to overflow</li> <li>– Check fluid level after installation is complete and all air is purged from system</li> <li>– Check for leaks. Tighten hose fittings or gaskets as necessary.</li> </ul>
Battery terminal becomes hot	<ul style="list-style-type: none"> <li>– Check battery cable and terminals are clean and tight on battery terminal</li> </ul>
	–
	–
	–

# Warranty

## WARRANTY:

Sunstream Corporation® (“Company”) warrants its Products for non-commercial and/or non-governmental use for a period of three (3)\* years, in both fresh and salt water, to the original Purchaser (“Purchaser”) against manufacturing defects in all Product materials and workmanship beginning from date of purchase of the Product from Company\*\* under the following terms and conditions:

NOTICE REQUIREMENTS AND REMEDIES: If the Purchaser discovers a defect, the Company, or its authorized Company dealer or agent, will, at the Company’s option: (1) repair the Product, (2) replace the defective part, or (3) refund the purchase price of the Product upon confirmation by Company that the Product is defective, provided that the Company receives notice of the defect from the Purchaser or Company dealer before the warranty period lapses. Product changes caused by age or environment (such as marine growth or heat) shall not constitute a defect. Confirmation of the defect shall require that reasonable proof of the defect be provided by Purchaser to Company or Company dealer, and may include that the Product or part be returned to Company for inspection at Purchaser’s initial expense. This warranty shall not apply if Company receives notification after the before-stated deadline, regardless of when the defect occurred or was discovered, and regardless of the reason for the delay in notification. “Notification” shall be deemed to have occurred when the Purchaser or Company dealer sends written notice to Company by fax or by e-mail and when receipt is confirmed by Company’s response.

EXCLUSIONS: This warranty does not apply to damages caused by or due to: (1) accident (including, without limitation, collision, fire, flood, wind, ice or any other natural disaster or acts of God), abuse, misuse, overloading, out of level or improper boat loading (i.e.: not fully on, too far on, or crooked on lift), or (2) faulty assembly or installation if such assembly or installation was not performed by a Company employee or Company dealer. Company is not responsible for determining the weight or dimensions of Purchaser’s boat, and Purchaser is advised that published boat specifications are often inaccurate. This warranty does not apply to wear and damage of boat covers, which includes wear from contact with boat, hardware, and accessories, damage from cover catching on boat or SwiftShield frame, and damage from incorrect boat position on lift. Purchaser is responsible for confirming cover does not catch or hang on boat or structure every time boat cover is covered or uncovered. This warranty is void if the Product has been modified without the permission of the Company or if any Company serial number has been removed or defaced. Normal maintenance requires an annual inspection of the Product by a Company employee or Company dealer, including bolts, pins, hydraulics, pump, electronics, and welds and failure to undertake such maintenance may constitute



# **Warranty (Continued)**

**SALT WATER REQUIREMENTS AND EXCLUSIONS:** If any Company Product is used in brackish or salt water, the Purchaser agrees that proper maintenance requires that the Purchaser shall attach to the product, maintain and regularly check sacrificial anodes, also known as “zincs,” in order to prevent electrolysis from damaging the lift metals, and that failure to attach and maintain the zincs constitutes “abuse.” \*\*\* Underwater light systems and the Dock Jock™ personal watercraft lifts are not warranted for brackish or salt water use regardless of zinc use.\*

**INTERNATIONAL WARRANTY:** The Purchaser agrees that if the Product leaves the borders of the United States of America, Puerto Rico or Canada, replacement parts shall be shipped with the dealer’s next container order. International dealers have the option of using parts from stocked product if possible to expedite response. Purchaser has the option to pay for expedited freight if desired.

**LIMITATIONS:** Except as expressly stated herein, there are no warranties, expressed or implied, by operation of law or otherwise, of the Product furnished under this Agreement. Seller disclaims any implied warranty of merchantability or fitness for a particular purpose. The sole remedy for liability of any kind shall be limited to the remedies provided in this warranty and shall in no event include any incidental, indirect, special or consequential damages or loss of use, revenue or profit. State law may override the above exceptions or limitations.

\* Fresh water applications for underwater light systems and the Dock Jock™ winch and strap are warranted for one (1) year; salt water applications are not warranted for these Products.

\*\* If the Product is purchased from a Company dealer, the warranty term begins upon the date the Product is sold to the end Purchaser or three (3) months from the date the Product is shipped from Company, whichever occurs first.

## **Sunstream Corporation®**

22149 68<sup>th</sup> Avenue South

Kent, WA 98032

[USA](#)

Web Site: [www.sunstreamcorp.com](http://www.sunstreamcorp.com)

E-mail: [warranty@sunstreamcorp.com](mailto:warranty@sunstreamcorp.com)

Phone: 1-253-395-0500

Fax: 1-253-395-0501

001-253-395-0500 (Int'l)

001-253-395-0501 (Int'l)