

ONLINE AUCTION



Large Capacity Precision Machining & Fabricating Facility

ASSETS AVAILABLE DUE TO CLOSURE OF MANUFACTURING OPERATIONS

DATE: THURSDAY, MARCH 19TH, 2020 @ 11:00AM ET

Inspection Date : Wednesday, March 18th, 2020 From 9:00AM - 4:00PM ET



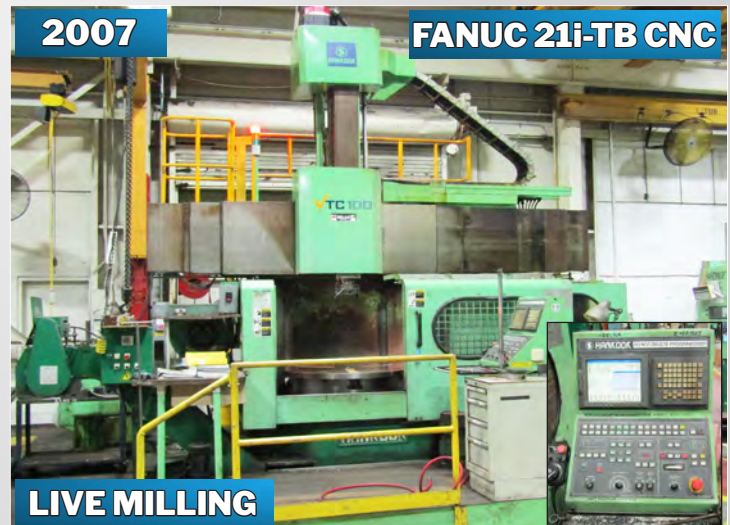
GIDDINGS & LEWIS G60-FX CNC HORIZONTAL BORING MILL



49"/67" GIDDINGS & LEWIS VTC-1250 CNC VERTICAL TURNING CENTER



53"/63" MORI SEIKI NVL 1350MC CNC VERTICAL TURNING CENTER



39"/49" HANKOOK VTC-100 CNC VERTICAL TURNING CENTER

3101 BROADWAY, BUFFALO, NEW YORK 14227



in
conjunction
with



CNC Horizontal Boring Mills & Vertical Turning Centers



GIDDINGS & LEWIS MC-60 CNC PRODUCTION CENTER



GIDDINGS & LEWIS G60-FX CNC HORIZONTAL BORING MILL

CNC HORIZONTAL BORING MILLS:

GIDDINGS & LEWIS MC-60 CNC Production Center, Fanuc 31i-A CNC Control, 200 ATC, 6" Spindle Dia., X-120", Y-98", Z-48", W-98", 60" x 60" Built-In Rotary Table, Pallet Shuttle System, (4) 60" x 96" Pallets, 30,000 Lbs. Table Cap., Spindle Speeds 12-2500 RPM, Thru Spindle Coolant, CAT #50 Taper, Heidenhain Scales, 50 HP, Chip Conveyor, Fully Rebuilt & Retrofit 2014, S/N 450-0392-99 [Complete Rebuild & Retrofit 2014]

GIDDINGS & LEWIS G60-FX CNC Floor Type Horizontal Boring Mill, Fanuc 31i-B CNC Control, 204 ATC, 6" Spindle Dia., X-192", Y-117", Z-36", 360C 60" x 84" B-Axis Rotary Table, Pallet Shuttle System, (4) 60" x 96" Pallets, 35,000 Lbs. Table Cap., Spindle Speeds 12-2500 RPM, Thru Spindle Coolant, 2013 Chip Blaster JV10 High Pressure Coolant System Chip Blaster, CAT #50 Taper, Heidenhain Scales, 80 HP, Chip Conveyor, S/N 455-68-93 [Complete Rebuild & Retrofit 2013] **SOLD!**

GIDDINGS & LEWIS PC-50 CNC Table Type Horizontal Boring Mill, G&L Numeripath 800M CNC Control, 60 ATC, 5" Spindle Dia., X-96", Y-72", Z-36", 48" x 96" Table, 70,000 Lbs. Table Cap., CAT #50 Taper, 25 HP, S/N 445-0014-78

GIDDINGS & LEWIS PC-50 RTX CNC Table Type Horizontal Boring Mill, G&L Numeripath 800M CNC Control, 60 ATC, 5" Spindle Dia., X-72", Y-60", Z-24", (2) 48" x 72" Pallets, Full B-Axis, Pallet Shuttle System, Spindle Speeds 25-1120 RPM, CAT #50 Taper, 25 HP, Rebuilt 2012, S/N 445-98-81

CNC VERTICAL TURNING CENTERS:

GIDDINGS & LEWIS VTC-1250 CNC Vertical Turning Center with Live Milling, Siemens 840D CNC Control, 68 ATC, (2) 49.21" Combination 3/4 Jaw Chucks with Pallet Shuttle System, 67" Swing, 63.5" Max Turning Height, 49" Ram Stroke, Table Speeds 1-500 RPM, 15,400 Lbs. Table Cap., 360,000 Position C-Axis Table, Live Spindle Speeds 15-4000 RPM, 40 HP Live Spindle Motor, Thru Spindle Coolant, KM80 Taper, 75 HP Table Motor, Chip Conveyor, S/N 524-0038-07 [2007] **SOLD!**

GIDDINGS & LEWIS VTC-60 CNC Vertical Turning Center with Live Milling, Fanuc 31i-B CNC Control, 45 ATC, (2) 66" 3-Jaw Combination Chucks with Pallet Shuttle System, 72" Swing, 72" Max Turning Height, 50" Ram Stroke, Table Speeds 3-336 RPM, 20,000 Lbs. Table Cap., 360,000 Position C-Axis Table, Live Spindle Speeds 15-2650 RPM, 30 HP Live Spindle Motor, Thru Spindle Coolant, CAT #60 Taper, 100 HP Table Motor, Chip Conveyor, S/N 513-0172-99 [Complete Rebuild & Retrofit 2013]



49"/67" GIDDINGS & LEWIS VTC-1250 CNC VERTICAL TURNING CENTER



66"/72" GIDDINGS & LEWIS VTC-60 VERTICAL TURNING CENTER

CNC Vertical Turning Centers



2011

FANUC 31i-A CNC

LIVE MILLING

2-AVAILABLE

53"/63" MORI SEIKI NVL 1350MC CNC VERTICAL TURNING CENTER



2007

FANUC 21i-TB CNC

LIVE MILLING

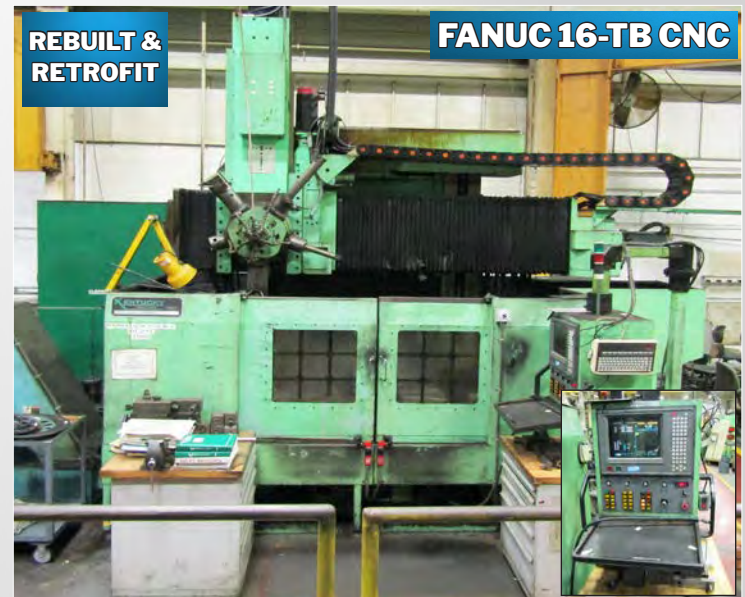
39"/49" HANKOOK VTC-100 CNC VERTICAL TURNING CENTER



FANUC 16-T CNC

LIVE MILLING

HARDINGE VT-200 CNC VERTICAL TURNING CENTER



REBUILT & RETROFIT

FANUC 16-TB CNC

GIDDINGS & LEWIS VTC-48 CNC VERTICAL TURRET LATHE

CNC VERTICAL TURNING CENTERS:

(2) **MORI SEIKI NVL 1350MC** CNC Vertical Turning Center with Live Milling, Fanuc 31i-A CNC Control, 40 ATC, 53.14" 3-Jaw Combination Hydraulic Chuck, 62.99" Swing, 51.18" Max Height Top of Chuck to Crossrail, 31.5" Ram Stroke, 19.7" Crossrail Travel, Table Speeds 400 RPM, 17,600 Lbs. Table Cap., 360,000 Position C-Axis Table, Live Spindle Speeds 3000 RPM, 30 HP Live Spindle Motor, Thru Spindle Coolant, BT-50 Taper, 60 HP Table Motor, Chip Conveyor, S/N 13110701, S/N 13110705 [2011]

HANKOOK VTC-100 CNC Vertical Turning Center, Fanuc 21i-TB CNC Control with Live Milling, 16 ATC, 39.34" 4-Jaw Independent Chuck, 49.21" Swing, 31.5" Max Turning Height, 31.5" Ram Stroke, Table Speeds 1-450 RPM, 8,820 Lbs. Table Cap., 360,000 Position C-Axis Table, Live Spindle Speeds 3-3000 RPM, 20 HP Live Spindle Motor, Thru Spindle Coolant, CAT #50 Taper, 50 HP Table Motor, S/N 38J08354 [2007]

HARDINGE VT-200 CNC Vertical Turret Lathe with Live Milling, GE Fanuc 16-T CNC Control, 12 ATC, 15.75" 3-Jaw Chuck, 25.5" Swing, X-15.75", Z-19.88", Live Spindle Speeds 3-3000 RPM, Renishaw LP2 Part Probe, Provision For Tool Probe, 30 HP, S/N VL-492-2 [2000]

GIDDINGS & LEWIS VTC-48 CNC Vertical Turret Lathe, GE Fanuc 16-TB CNC Control, 48" Table Dia., 63" Swing, 3-Jaw Hydraulic Combination Chuck, 5-Position Turret, Table Speeds 4-320 RPM, 40 HP Table Motor, Rebuilt and Retrofit 1996, S/N 512-16-71

GIDDINGS & LEWIS VTC-48 CNC Vertical Turret Lathe, G&L Numeripath 802L CNC Control, 48" Table Diameter, 63" Swing, 48" 3-Jaw Independent Self Centering Chuck, 5-Position Turret, Table Speeds 3.8-333 RPM, 50 HP Table Motor, S/N 512-68-77

CNC Vertical & Horizontal Machining Centers



MILLTRONICS MB20 CNC VERTICAL MACHINING CENTER



X-AXIS 145" TRAVELLING COLUMN

CINCINNATI LAMB FTV1050-3700 CNC VERTICAL MACHINING CENTER



MILLTRONICS RH30 CNC VERTICAL MACHINING CENTER



OKUMA 600H-HS CNC HORIZONTAL MACHINING CENTER

CNC VERTICAL MACHINING CENTERS:

MILLTRONICS MB20 CNC Vertical Milling Machine, Centurion 7T CNC Control, X-40", Y-20", Z-24", 16" x 54" Table, 2,500 Lbs. Table Capacity, 60-4500 RPM, CAT #40 Taper, 10 HP, S/N 7695 [2003]

CINCINNATI LAMB FTV1050-3700 CNC Traveling Column Vertical Machining Center, FANUC 18i-MB CNC Control, Table Size: 169" x 39.37", Travels: X-145.66", (59.1" Per Station For Dual Zone Work), Y-39.56", Z-32", 22,000 Lbs. Table Capacity, 66-Tool Capacity (36 ATC On Column, 15 ATC Each Side Of Work Zone), CAT #50 Big-Plus Taper, Spindle Speeds 60-8000 RPM, 56 HP, Renishaw MP700 Part Probe, Renishaw NC-4S Laser Type Tool Management System, 1000 PSI Through Spindle Coolant, Chip Blaster, Chip Conveyor, 2006, S/N 7099-F00-KD0226 [Note: Z-Axis Linear Way Needs Replacement] [2006]

MILLTRONICS RH30 CNC Vertical Machining Center, Centurion 6 CNC Control, X-60", Y-30", Z-28", 24" x 73" Table, 3000 Lbs. Table Capacity, 50-6000 RPM, CAT #40 Taper, 20 ATC, 15 HP, S/N 10058 [2007]

CNC HORIZONTAL MACHINING CENTER:

OKUMA 600H-HS CNC Horizontal Machining Center, Okuma OSP-7000 CNC Control, 100ATC, (2) 24.8" x 24.8" Pallets, 1 Degree Indexing, X-39.37", Y-31.5", Z-29.5", 10,000 RPM, CAT #50 Taper, 30 HP, S/N 0375

CNC & Manual Lathes



POREBA 43.5"/52" X 118" TRP110X3M LATHE



MILLTRONICS ML22/60 CNC LATHE



MORI SEIKI DL-25MC OPPOSED SPINDLE CNC TURNING & MILLING CENTER



DOALL 25" X 120" 25H LATHE

CNC LATHES:

MILLTRONICS ML22/60 CNC Lathe, Centurion 7T CNC Control, 23" Swing x 60" Between Centers, 12" 3-Jaw Chuck, 16" 4-Jaw Chuck, 21" 4-Jaw Chuck, 24 HP, S/N 10734 [2008]

MORI SEIKI DL-25MC Opposed Spindle CNC Turning & Milling Center, GE Fanuc 16TT/MFD6 CNC Control, 14.96" Swing, Z-11.81", (2) 12" 3-Jaw Chucks with C-Axis, (2) 12-Position Turrets With Live Milling, Both Spindles Have 360,000 Increment Positioning, S/N 45

MANUAL LATHES:

POREBA TRP110 x 3M Gap Bed Manual Lathe, 43.3" Swing, 52" Swing In Gap, 118.11" Between Centers, 13,500 Lbs. Weight Capacity, 36 HP, S/N 740202-05005-00

DOALL (Romi) 25H Manual Lathe, 25" Swing, 34" Swing In Gap, 120" Between Centers, Tailstock, Steady Rest, Digital Readout, 16 HP, S/N 0274949-166

KINGSTON HJ-1100 Lathe, 10" 3-Jaw Chuck, 16" Swing, 47" Centers, 2.5" Inlet, Acu-Rite Drop, 35-2000 RPM Spindle Speed, S/N CH03357

KINGSTON HD-2260 Lathe, 16" 4-Jaw Chuck, 20" Swing, 65" Centers, 4" Inlet, Acu-Rite DRO, 13-1200 RPM Spindle Speed, S/N CH3182



KINGSTON HJ-1100 LATHE 16" X 47" CAPACITY



KINGSTON HD-2260 LATHE 20" X 65" CAPACITY

Plasma Pipe Cutter, Balancing Machine & More



2013 **5-AXIS CNC**
VERNON MPM-5 5-AXIS PLASMA PIPE CUTTER



2008
SCHENCK HM3BU HORIZONTAL BALANCING MACHINE



W.F. WELLS & SONS F-16-1 HORIZONTAL BANDSAW



MITTS & MERRILL 3HFR KS HYDRAULIC KEYSEATER

PLASMA PIPE CUTTER:

VERNON TOOL MPM-5 5-Axis CNC Plasma Pipe Cutter, Model 0224, 2"-24" Pipe Diameter, 200 IPM Max Cutting Speed, 5,000 Lbs. Max Total Load, S/N 6311, Kalibur ProLine 2100 Plasma Power Supply, S/N 4306337-1 [NOTE: Donaldson Torit DownFlo Dust Collector and Fume Hood Sold Separately] [2013] **SOLD!**

DUST & FUME EXTRACTOR:

TORIT DONALDSON DownFlo Oval DFO3-24 12-Unit Dust and Fume Extractor with Fume Hood, S/N 4306337-1 **SOLD!**

HORIZONTAL BALANCING MACHINE:

SCHENCK HM3BU Horizontal Balancing Machine, 49" Swing Over Bed, 91.7" Maximum Distance Between Support Bearing Centerlines, 98" Machine Bed Length, 500 to 650 Lbs. Weight Capacity, Instrumentation Speed Range 100 to 100,000 RPM, 3 HP Primary Motor, S/N AHC8746M [2008]

HORIZONTAL BANDSAW:

W.F WELLS & SON INC. F16-1 Horizontal Band Saw, Capacity: Round at 90° 16" Diameter Weight Capacity: 5,000 lbs. Blade Speed: 60-425 SFPM Blade Size: 1 1/4" X .042" Sawing Feed: Variable, Hydraulic Blade Guide: Rollers and Carbide Side Blocks Blade Tension: Manual with Indicator Band wheel Size: 20" Voltage Vise: Manual, 8-1/2in 208-60-3 Blade Drive: 7 1/2 HP, 3ph, AC Vector Drive 230-60-3 Coolant, S/N 169176

KEYSEATER:

MITTS & MERRILL Hydraulic Keyseater, Model 3HFR KS, 2" x 24" Capacity, 41" x 40" Table, S/N KM80019

VERTICAL BANDSAW:

DOALL TF-2021M Vertical Band Saw, 36" X 37" Table, Table Capacity 6000 LBS, Head Tilt 45 Degree Blade Speed 40 TO 300 FPM, Blade Feed Rate 0 TO 12 IPM Blade Length 204", Blade Stroke 20", 10 HP, with 10' Roller Conveyor, S/N 447-9322



DOALL TF-2021M VERTICAL BAND SAW

Large Capacity Paint Booths, Blast Booths & More



SPRAY SYSTEMS INC. TB322220 PAINT BOOTH



SPRAY SYSTEMS INC. TB-402621 PAINT BOOTH



SPRAY SYSTEMS INC. TB-261814 PAINT BOOTH



SPRAY SYSTEMS INC. TB-161414 PAINT BOOTH



BLAST CLEANING PRODUCTS SHOT BLAST BOOTH



RIVEER RT5500 WATER SEPARATOR & FILTRATION SYSTEM

LARGE CAPACITY PAINT BOOTHS WITH BAKE CYCLES:

SPRAY SYSTEMS INC. TB322220 Paint Booth, 32' x 22' x 20' Inside Dimensions, with Rupp Air AMU with Exhaust and Fan Controls, 160 Degree F Bake Cycle [2010]

SPRAY SYSTEMS INC. TB-402621 Paint Booth, 40' x 26' x 21' Inside Dimensions, Col-Met AMU with Exhaust and Fan Controls, 160 Degree F Bake Cycle [1996]

SPRAY SYSTEMS INC. TB-261814 Paint Booth 26' x 18' x 14' Inside Dimensions, Rupp F Bake Cycle [2012]

SPRAY SYSTEMS INC. TB-161414 Paint Booth 16' x 14' x 14' Inside Dimensions, Rupp Air AMU with Fan Controls, 160 Degree F Bake Cycle [2014]

SHOT BLAST BOOTH:

BLAST CLEANING PRODUCTS Fully Enclosed Shot Blast Booth with Full Floor Recovery System, 12'8" x 18' x 10'5"

WATER SEPARATOR & FILTRATION SYSTEM:

RIVEER WATER SEPARATOR AND FILTRATION SYSTEM RT5500 Including RTS 500 Wash Water Treatment System with 200 Gallon Stainless Steel Oil/Water Separator Tank, Filtration System, 3,000 PSI, 4 GPM Natural Gas Hot Water Pressure Washer, Remote Operation Panel, Full System Enclosed in ISO 20' Container (Fully Heated, Insulated and Lit) [2013]

Welding Positioners, Welders & More



LARGE QUANTITY OF ASSORTED WELDERS



KOIKE HD20 2000 LB WELDING POSITIONER



PANDJIRIS 60-12VPL 6000 LB WELDING POSITIONER



1 OF 8

LINCOLN POWER WAVE 455M/SST WELDER



1 OF 3

MILLER SYNCROWAVE 250 DX WELDER



LINCOLN 250/250 WELER



PANDJIRIS ELEVATING 60-12 6,000 LB WELD POSITIONER



ARONSON HD160 16,000 LB WELDING POSITIONER



ARONSON 60VF 6,000 LB WELDING POSITIONER

WELDING POSITIONERS:

KOIKE HD20 2000 Lb. Weld Positioner, Variable Speed, 16" 3-Jaw Chuck, 12000 Lb. in. Rot., 21000 Lb. in. Tilt, 460/3/60, S/N 50087

PANDJIRIS 60-12VPL 6000 Lb. Weld Positioner, 32" 3-Jaw Chuck, 460/3/60, S/N 19206

KOIKE HD60VF Weld Positioner, 32" 3-Jaw Chuck, 72000 Lb. in. Rot., 123000 Lb. in. Tilt, 460/34444/60, S/N 45318

ARONSON HD45A 4500 Lb. Weld Positioner, Variable Speed, 25" 3-Jaw Chuck 460/3/60, S/N R970515

ARONSON HD45EDC 4500 Lb. Weld Positioner, Variable Speed, 25" 3-Jaw Chuck 460/3/60, S/N 6663

RANSOME CO. B3 Weld Positioner, 300 Lb. in. Cap., 10" 3-Jaw Chuck, S/N 929210

PHOENIX Products 9 Type 900 Rod Oven, 100-550 Degree F Temp Range, 240/480 V

ARONSON HD25 2500 Lb. Weld Positioner, Variable Speed, 15000 Lb. in. Rot., 31975 lb. in. Tilt, 12" 3-Jaw Chuck, S/N 60554

PANDJIRIS Elevating 60-12 6,000 Lb. Weld Positioner, Variable Speed, 32" 3-Jaw Chuck, 460/3/60, S/N 10102X00-3

ARONSON HD45EDC 4500 Lb. Weld Positioner, Variable Speed, 25" 3-Jaw Chuck 460/3/60, S/N 73162

ARONSON HD60VF 6000 Lb. Weld Positioner, Variable Speed, 123000 Lb. in. Tilt, 32in 3-Jaw Chuck, 480/3/60, S/N 45319

KOIKE VP400 B-3 Weld Positioner, 300 Lb. in. Max Cap, 16" 3-Jaw Chuck

ARONSON HD160 16,000 Lb. Weld Positioner, Variable Speed, 288000 Lb. in. Rot., 336000 Lb. in. Tilt, 16" 3-Jaw Chuck, 460/3/60, S/N 63132

LARGE QUANTITY OF WELDERS AVAILABLE:

LINCOLN Power Wave 455M/SST Welder [8 Available], **LINCOLN** 275 Welder, **LINCOLN** Mig-255 Welder, **LINCOLN** R35-325 Welder, **LINCOLN** Tig 250/250 Welder, **MILLER** Millermatic 252 Welder, **MILLER** Syncrowave 250 DX Welder, **NELSON** TR-450B Stud Welder

Switchgear Equipment, Induction Motor & Variable Frequency Drive

2015

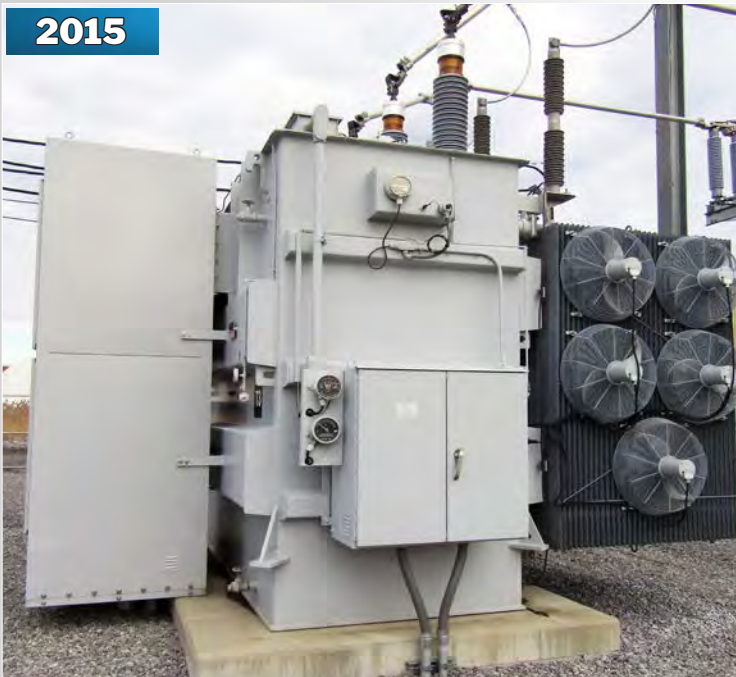


ABB 30MVA POWER TRANSFORMER

2015



ABB 15KV, 2000AMP METAL-CLAD OUTDOOR SWITCHGEAR ASSEMBLY BY JAGG



SIEMENS 1400KW HARMONY DRIVE VFD

REBUILT
2003



IDEAL ELECTRIC 6500HP 3583 RPM INDUCTION MOTOR

POWER TRANSFORMER:

ABB 30MVA Three Phase, 60 Hertz Power Transformer, S/N CS00141001, Mfg. 03/2015, Rated 30.0/40.0 MVA at 55 Degree C Rise, 33.6/44.8 MVA at 65 Degree C Rise, HV 115000 Volts 550 KV BIL, LV 13800Y/7970 Volts 150 KV BIL, Impedance 9.10% at 115000-13800Y Volts and 30 MVA, Cooling Class ONAN/ONAF/ONAF, Unit Weights: Core and Coils 5693 Lbs., Tank and Fittings 21,412 Lbs., Radiators 11,196 Lbs., Tank Oil 4,378 Gallons 32,833 Lbs., Radiator Oil 496 Gallons 3,712 Lbs., Total Weight 126,903 Lbs. [2015]

SWITCHGEAR ASSEMBLY:

ABB 15KV, 2000AMP Metal-Clad Enclosed Outdoor Walk-In Switchgear Assembly by JAGG, S/N 14830714, Mfg. 8/2015, 2000 AMP (1200 AMP Feeders, 95KV BIL, 25KA I.C., Suitable for use on a circuit capable of delivering not more than 20,000 RMS Symmetrical AMPS, Unit was built in conformance with ANSI Standard V37.20.2, Specs: Vacuum Circuit Breaker Type ADVAC, Continuous Current, Amperes (Main) 2000, Interrupting Current, Amperes (Feeders) 1200, Maximum Voltage 15KV, Rated Short Circuit Current 25KA RMS, Short Time Current, 1SEC., 25KA RMS, Frequency 60HZ, Basic Impulse Level 95KV BIL, Includes Sheltered Aisle Switchgear Enclosure: DIMS 177" Wide X 280". Deep X 123" Tall, 11ga Metal, 2" Foam Insulated [2015]

VARIABLE FREQUENCY DRIVE:

SIEMENS 1400KW Harmony Drive VFD, System PIN:31500410.00, S.O.# 3000390635, Input 10000VAC 3PH, 50HZ, 103A, Output: 0-6600VAC, 3PH, 0-50HZ, 20A, Control Voltage: 380VAC, 3PH, 50HZ, 20A, Cabinet Dims: 192" W X 49" D X 115" H, Estimated Weight 5800kg/12,800Lbs.

INDUCTION MOTOR:

IDEAL ELECTRIC 6500HP 3583 RPM Induction Motor, S/N 022886, Volts: 13,800, HZ:60, Frame: 11000-43, Type IM, FLAmps:231, Temp. Rise 80 Degrees C, Amb. Temp. 40 Degrees C, Insulation Class F, Duty Continuous, SF: 1.15, See PDF Data Sheet For more Induction Motor Data. Includes: Top Mounted Fan Box and Parts. Never Placed Back Into Production [Rebuilt 2003]

Rotary Shot Blast, Plant Support Equipment & More



METFIN 400 AUTOMATIC ROTARY SHOT BLAST CABINET



4-AVAILABLE

DCE UMA152G5AD DUST COLLECTOR



BARBEE ENGINEERING P3000 PORTABLE HYDRO-STATIC PRESSURE TESTER



PRUFTECHNIK AG EDDYTHERM 4X ETH 7440 HUB HEATER



K.O. LEE UNIVERSAL TOOL & CUTTER GRINDER



RIGID 535 PIPE THREADER



HYDROLETRIC K20WSTD11-120 20,000 LBS ELECTRIC TRANSFER CART



YALE MPB040-EN24T2748 ELECTRIC PALLET JACK



ADVANCED VEHICLES 20,000 LBS LWP-SP TYPE E ELECTRIC PALLET TRUCK



BPR/RICO PLW-DD-T-500 50,000 LBS TRANSFER CART

Miscellaneous Production, Rolling Stock, Gantry Cranes, Plant Support



CAT 50 TOOL HOLDERS



BT 50 TOOL HOLDERS



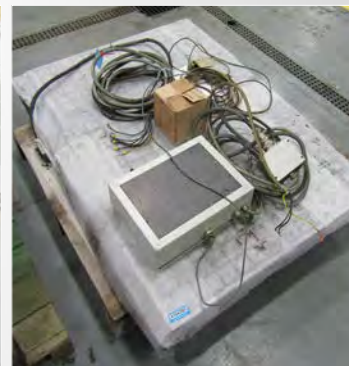
BUSHMAN M9604 COIL POSITIONER



CADY 35 TON 15' SPREADER BAR



RGF TO30 EVAPORATOR



NEW MAGNETICS 38" X 56" ELECTROMAGNETIC CHUCK



GRACO ELECTRONIC PROPORTIONER

MISCELLANEOUS PRODUCTION & PLANT SUPPORT:

(9) JET, WILTON, CLAUSING, POWERMATIC, ROCKWELL Drill Presses, ELECTRO-ARC Tap Extractor, SUNNEN MBB-1690E Horiz. Hone, (3) BUX & BDS Magnetic Drills, RECCO R1220D Heat Treat Oven, HAMMOND Grinder, GORTON 375, RUSH 380 and K.O. LEE Universal Tool & Cutter Grinders, BROWN & SHARPE Set-Tronic Tool Setter, GRIZZLY G1010 Horiz. Band Saw, Belt Sander, (4) PRUFTECHNIK, FOUCAULT, AG Eddytherm & SIMATEC AG Simotherm Hub Heaters, (3) BARBEE Eng. P3000 Portable Hydrostatic Pressure Testers, (2) RIGID 300 & 355 Pipe Threaders, (3) WILTON & SULLIVAN Vertical Band Saws, Pedestal Grinders, (2) Graymills Parts Washers, DORINGER Chop Saw, (10) MITSUBISHI, HYSTER & YALE 4,000 LB Electric Pallet Jacks, (6) DCE UMA Dust Collectors, MAGNAFLUX Demagnetizer, Rod Ovens, Hundreds of CAT 50 Tool Holders, ERICKSON CAT 50, Boring Heads, CAT 60 Tool Holders, (3) OAKLAND Water Separators, RGF Evaporator, (4) UNIHOME & METAL FINISHING Blast Cabinets, CHIP BLASTERS, 2.5 & 10 Ton Gantry Cranes CRANE Spreader Beams up to 60 Ton Cap., (2) CADY 35 ton Telescoping Spreader Beams, Paint Mixers, GRACO Gun Washers, (4) PROMIX 2KE Electronic Proportioners, Blue-M Oven, Teles Name Plate Engraver, Hydraulic Lift Tables, New Never Used Magnetic Chucks, Industrial Kitchen Including TRUE 2 & 3 Door Freezers, ROYAL RR 6-Burner Range, IMPERIAL Electric Griddle & Deep Fryer, (60) Multi Tier A-Frame Parts Carts, RACK ENG. Roll Out Cantilever Rack, Ridge-U-Rack Stak System, FIXURES Roll Out Cantilever Racking 9,000 Lb Capacity Per Shelf, Rotary Tables, Angle Plates, (50+) LISTA & VIDMAR Tool Cabinets



FIXTURES RACK 3-TIER 11' X 6' SHELVES



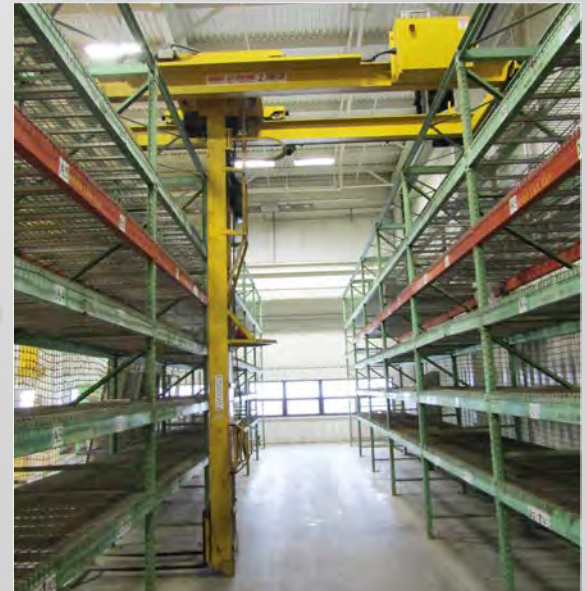
SIMMERS 2 TON GANTRY CRANE



MULTI TIER A-FRAME PARTS CARTS



PNEUMATIC RETRACTABLE HOSE REELS



RIDG-U-RACK STAK-U-RAK SYSTEM



Prestige Equipment Auctions

35 Pinelawn Rd, Suite 203W

Melville, NY 11747

631-249-5566

www.prestigeequipment.com



2015 ABB 30MVA POWER TRANSFORMER



SPRAY SYSTEMS INC. TB322220 PAINT BOOTH
W/ BAKE CYCLE

ONLINE AUCTION MARCH 19TH



Ingersoll Rand

Large Capacity Precision
Machining & Fabricating Facility

ASSETS AVAILABLE DUE TO CLOSURE OF MFG OPERATIONS

ONLINE AUCTION



Ingersoll Rand

Large Capacity Precision
Machining & Fabricating Facility

ASSETS AVAILABLE DUE TO CLOSURE OF MANUFACTURING OPERATIONS

DATE: THURSDAY, MARCH 19TH, 2020 @ 11:00AM ET

Inspection Date : Wednesday, March 18th, 2020 From 9:00AM - 4:00PM ET



GIDDINGS & LEWIS G60-FX CNC HBM



GIDDINGS & LEWIS VTC-1250 CNC VTC



MORI SEIKI NVL 1350MC CNC VTC



HANKOOK VTC-100 CNC VTC

3101 BROADWAY, BUFFALO, NEW YORK 14227



in
conjunction
with



www.prestigeequipment.com/auction/ingersoll-rand/