



ASUG Deep Dive Webinar

SAP Business Technology Platform Announcements

Irfan Khan, President, SAP HANA Database and Analytics, SAP
Michael Weingartner, President, SAP Business Technology Platform Core, SAP
Dr. Feiyu Xu, SVP and Global Head of Artificial Intelligence, SAP

Agenda: SAP BTP Announcements

Welcome Remarks

- ASUG – *5 minutes*

SAP TechEd 2021 News Overview and Themes

- Michael Weingartner – *5 minutes*

Everyone Can Be a Developer with SAP

- Michael Weingartner – *10 minutes*

Composable Enterprise Solutions

- Irfan Khan – *12 minutes*

SAP to Expand Enterprise AI Offerings Across its Portfolio

- Feiyu Xu – *10 minutes*

Q&A

- moderated by ASUG – *18 minutes*

TechEd Agenda: 8 Tracks – Evolving around 4 Key Themes

Pick Your Path: SAP TechEd Tracks

Choose a track topic to learn more.

Analytics

Application Development and Integration

Database and Data Management

Digital Transformation with Intelligent ERP

Integrated Intelligent Suite

Intelligent Suite Solutions and Process

Intelligent Technologies

Partner Innovation with SAP

Channel 1

SAP TechEd 2021 focused on **4 key themes** along any companies journey towards an **Intelligent Enterprise**:

- **Low-code/No-code/Pro-code:** Extending and Empowering Developer Base with New Low-Code/No-Code and Pro-Code Offerings
- **Integration & Extension updates:** Achieving Agility Through Enhanced Integration and Extension Tools
- **AI offerings:** SAP to Expand Embedded Enterprise AI Across its Portfolio

... plus learning and education

Catch all the [replays](#) on the TechEd 2021 Platform

Everyone can be a Developer with SAP

Michael Weingartner – *10 minutes*



Everyone can be a Developer with SAP

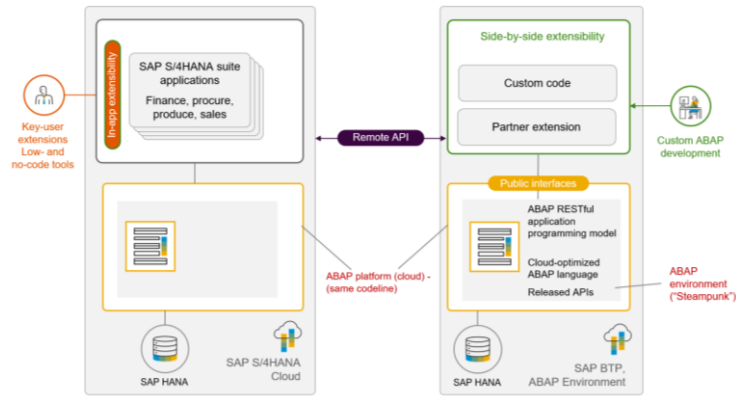
At a Glance: New and Extended Low-Code/No-Code and Pro-Code Offerings:



SAP BTP Free Tier

Keep the SAP TechEd momentum going by experiencing the free tier model on SAP BTP

[Start now >](#)



SAP S/4HANA Cloud embedded Steampunk

Flexibly adjust and extend the ERP core in an ABAP environment

[SAP Community Blog >](#)

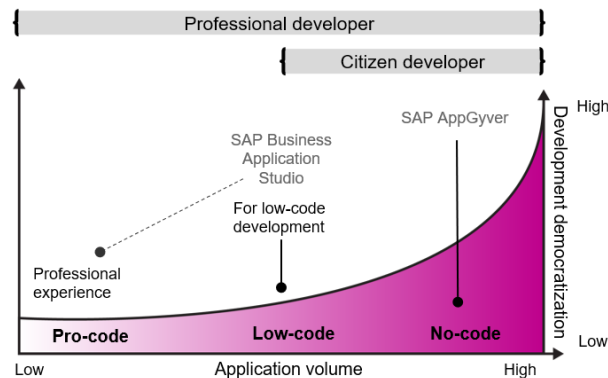


A preview of an SAP Fiori application using the accessible Evening Horizon (dark mode)

Fiori Design Evolution

Redesigning How We Build Products at SAP

[SAP News Article >](#)



Boost development efficiency and unleash innovation

AppGyver embedded in SAP Business Application Studio

[SAP Community Blog >](#)

No Code SAP Process Automation & RPA for Business Builders

[SAP Community Blog >](#)

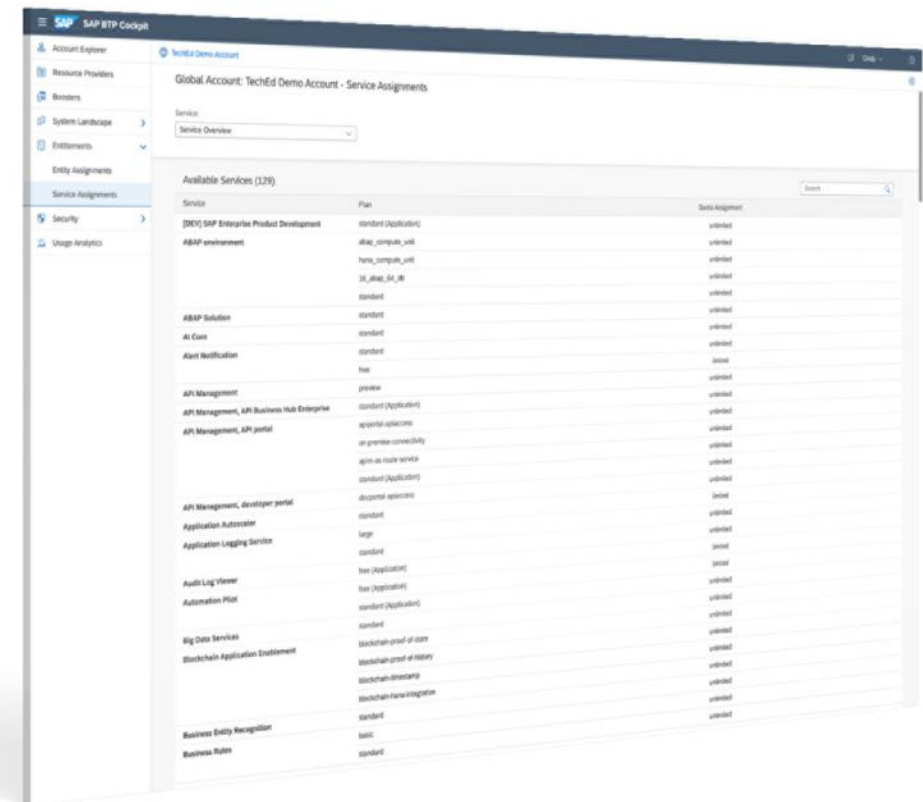


Everyone can be a Developer with SAP

Deep Dive:

Free Tier: SAP Integration Suite and SAP HANA Cloud now available

- Enables customers, partners, and now also individual developers to test SAP BTP services and transfer these into production without losing any work at no cost
- Growing list of free tier options for SAP BTP services, now including SAP Integration Suite and SAP HANA Cloud
- Automated provisioning of free tier instance, SAP Store/Pay-As-You-Go

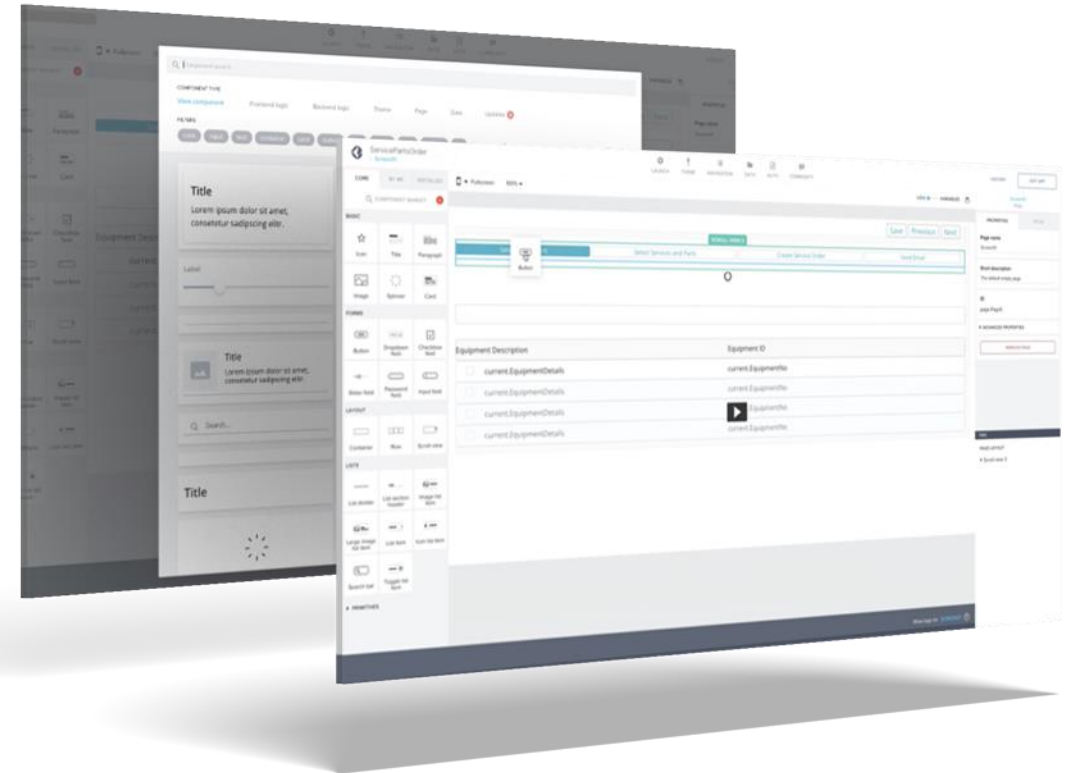


Everyone can be a Developer with SAP

Deep Dive:

SAP Business Application Studio Embedded with AppGyver No Code Capabilities

A unified application development experience enabling both citizen and professional developers to accelerate application composition and boost productivity. SAP Business Application Studio low-code is available as free tier service plan for SAP BTP. You can try SAP AppGyver via appgyver.com.

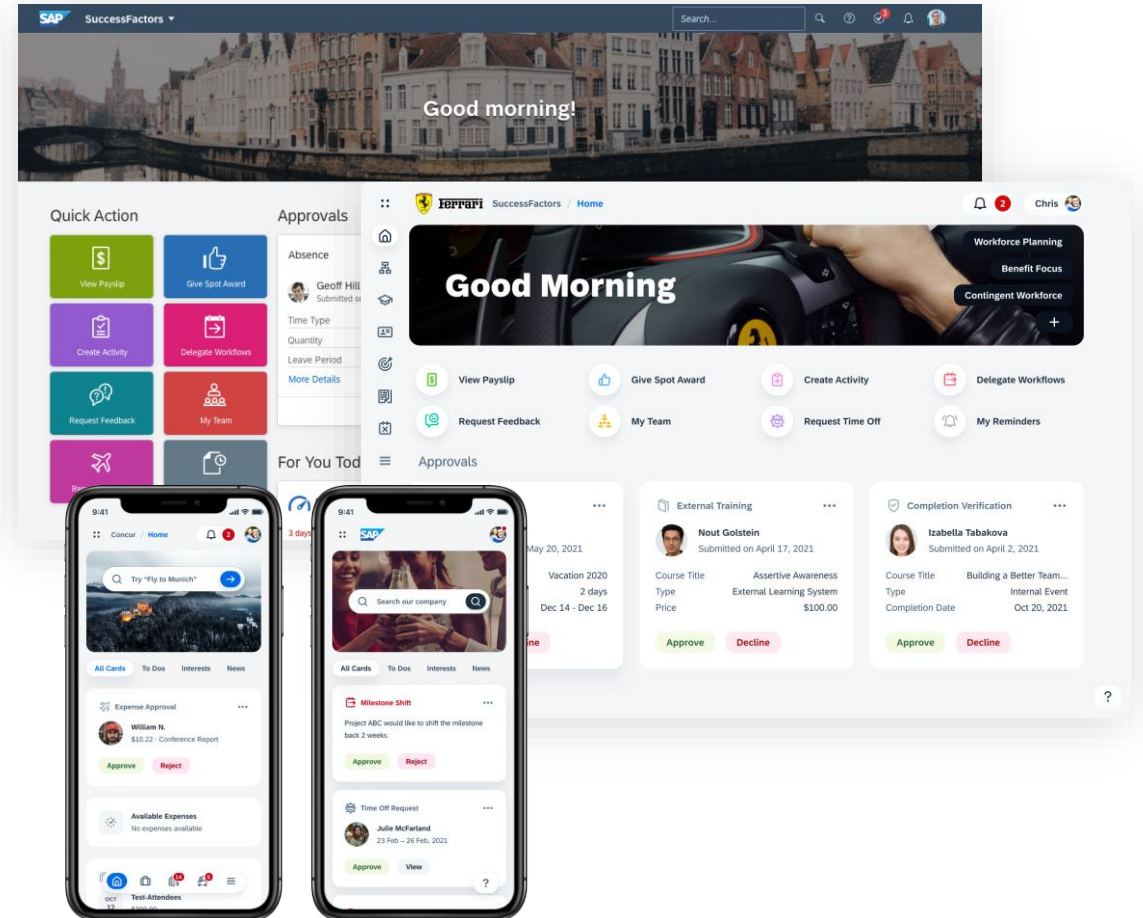


Everyone can be a Developer with SAP

Deep Dive:

SAP Fiori Design Evolution

Preview available for all SAP BTP developers and SAP S/4HANA Cloud customers



Everyone Can Be A Developer with SAP

Where to get Started

SAP TechEd News Guide Announcement

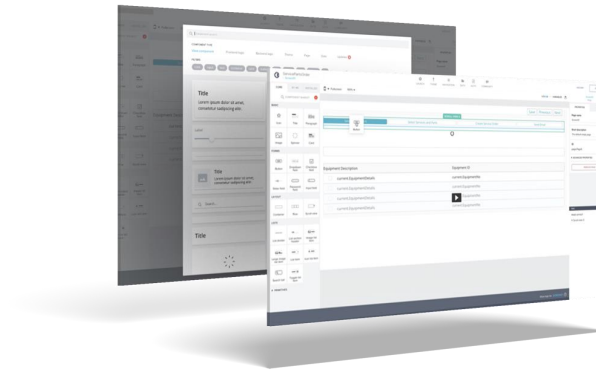
[Free tier model for SAP BTP now includes individual developer access, SAP HANA® Cloud, SAP Integration Suite](#)

SAP TechEd News Guide Announcement

[SAP® AppGyver®, SAP Business Application Studio strengthen low-code/no-code app development options](#)

SAP TechEd News Guide Announcement

[SAP Fiori® design system evolves with new visual theme, now available for preview and feedback](#)



A preview of an SAP Fiori application using the accessible Evening Horizon (dark mode)

- [Free tier service plans for SAP BTP](#)
- [Free tier compatible missions on SAP Discovery Center](#)
- Sign up for our [monthly newsletter](#)

- [SAP AppGyver](#) on SAP Discovery Center
- [SAP Business Application Studio](#)
- [Scale App Development with SAP AppGyver and SAP Business Application Studio \[Dev111\]](#)

- [TechEd: Dive into the User Experience and Design Journey of SAP Solutions \[CH028\]](#)
- [The Experience Mindset: Redesigning How We Build Products at SAP](#)

[SAP TechEd News Guide](#)

[SAP DISCOVERY CENTER](#)

[FREE LEARNING EXPERIENCE](#)

[SAP COMMUNITY](#)

Turn Business Data into Actionable Insights

Composable Enterprise Solutions — Agility Through Enhanced Integration and Extension Tools

Irfan Khan — 12 minutes



Reducing friction

Improving integrations and data analysis

SAP Data Warehouse Cloud, SAP BW bridge

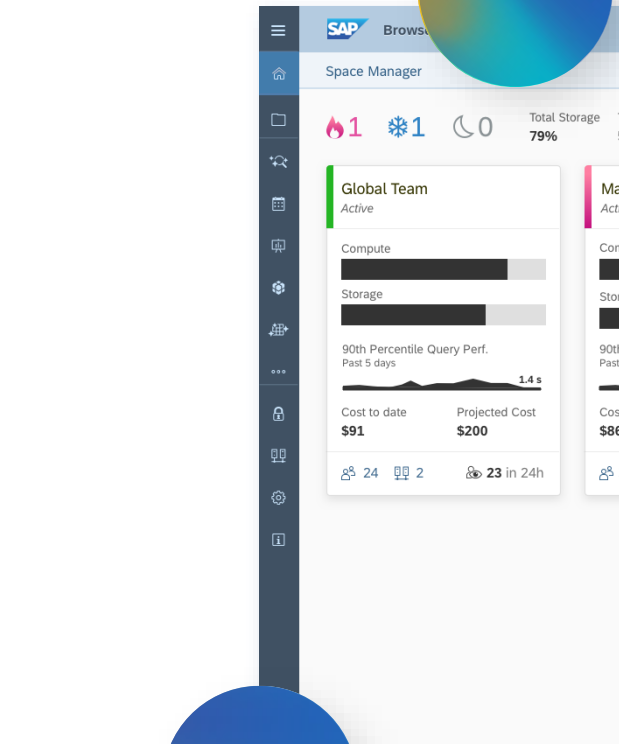
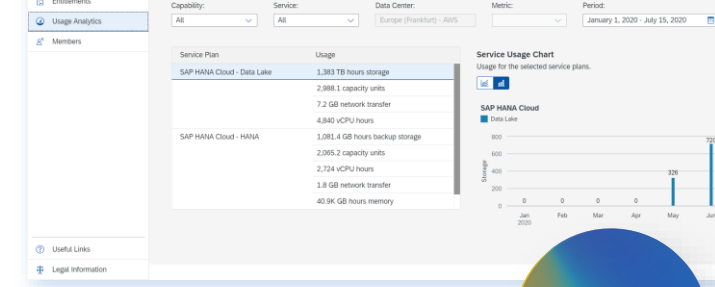
- A new capability for reuse and integration of the traditional SAP Business Warehouse (SAP BW) and SAP BW/4HANA in SAP Data Warehouse Cloud
- Access to ABAP-based data ingestion and staging for (legacy) SAP source systems (GA planned for Q4 2021) and a migration tool to transfer the data integration and staging of SAP BW and SAP BW/4HANA to SAP Data Warehouse Cloud (planned for Q1 2022)

SAP Database Migration Tools & Services

- Availability of a public community edition of the SAP Advanced SQL Migration Tool as well as support for migrating from third-party databases to SAP HANA Cloud
- New self-service database migration service from SAP HANA-as-a-Service NEO instances to SAP HANA Cloud

Dynamic Extension

- Ability to dynamically extend and replicate on-premises SAP HANA structures and data to SAP HANA Cloud for hybrid scenarios
- Available with SAP HANA Cloud QRC Q4 release (Dec 2021)



A more unified portfolio

Smooth usage across solutions

Support for SAP Integrated Business Planning for Supply Chain running on SAP HANA Cloud

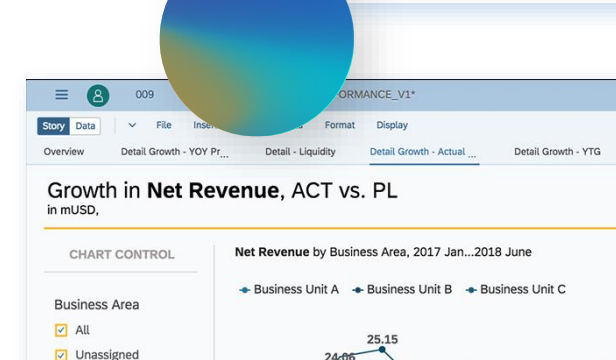
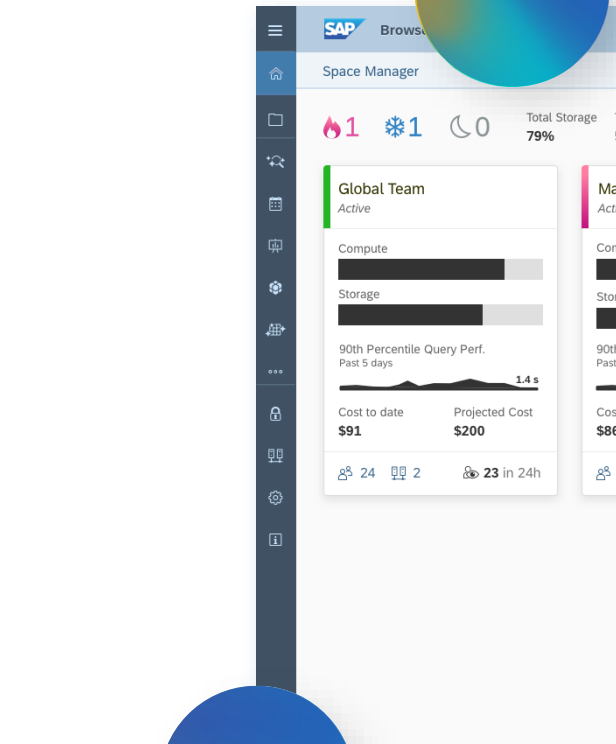
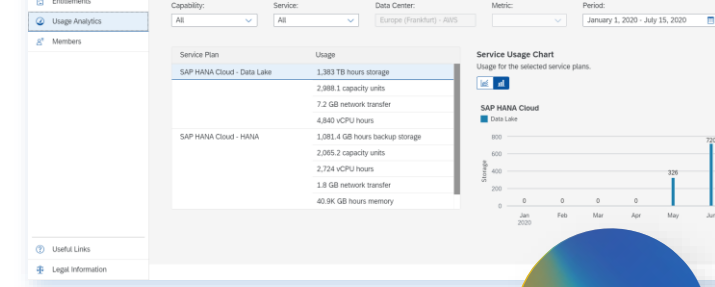
- Adoption of SAP HANA Cloud
- Beta available since Q4 2021

SAP Analytics Cloud integration with core SAP applications

- SAP Ariba solutions (GA Q4 2021), SAP Concur solutions (GA H1 2022) integrated with SAP Analytics Cloud
- Key functionalities: Full live data access for embedded analytics, query validation tool, numerous performance improvements and additional pre-build content with Workforce Analytics

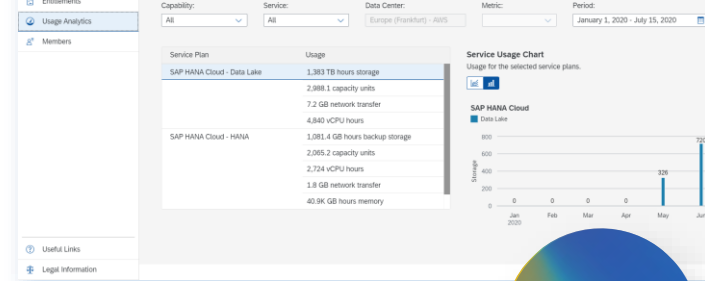
Hybrid Data Management

- Next evolutionary step to strengthen combined use cases of SAP Data Intelligence Cloud with SAP Landscape Transformation Replication Server, SAP Data Services, and SAP Information Steward



Openness: Increased flexibility and choice

Driving innovations and data preservation



Additional Google Cloud Platform data centers planned for SAP HANA Cloud

- North America – available as of October 2021
- Europe – Q4 2021
- APJ – Q1 2022

Microsoft Office integration

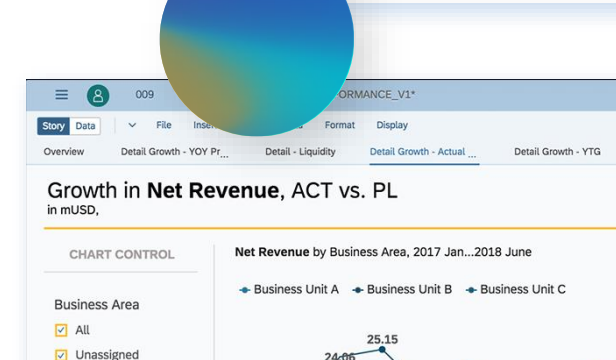
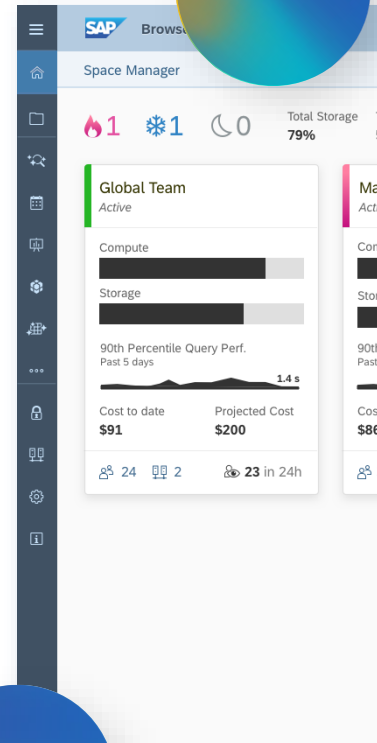
- SAP Analytics Cloud, add-in for Microsoft Office planned to support SAP Data Warehouse Cloud solution data sources
- Ability to preserve Microsoft Excel formulas in tables after data refresh and to use cell-based formulas for tasks such as retrieving data in the Excel grid (planned for Q4 2021)

SAP Analytics Cloud, analytics designer and custom widgets

- New APIs to enable you to build scalable, user-friendly, custom-tailored, and guided analytic applications for planning and BI
- Data access capability for custom widgets, which enables assigning of models from SAP Analytics Cloud to “Custom” more conveniently and intuitively (planned for Q4 2021)
- Graphical overview of all the relations among widgets, defined by linked analysis or a filter line in analytic applications (planned for Q4 2021)

SAP HANA Cloud available on free tier model for SAP BTP

- Available now



More comprehensive capabilities

Continuous commitment to our products

SAP HANA 2.0 SPS 06

Enterprise security and readiness

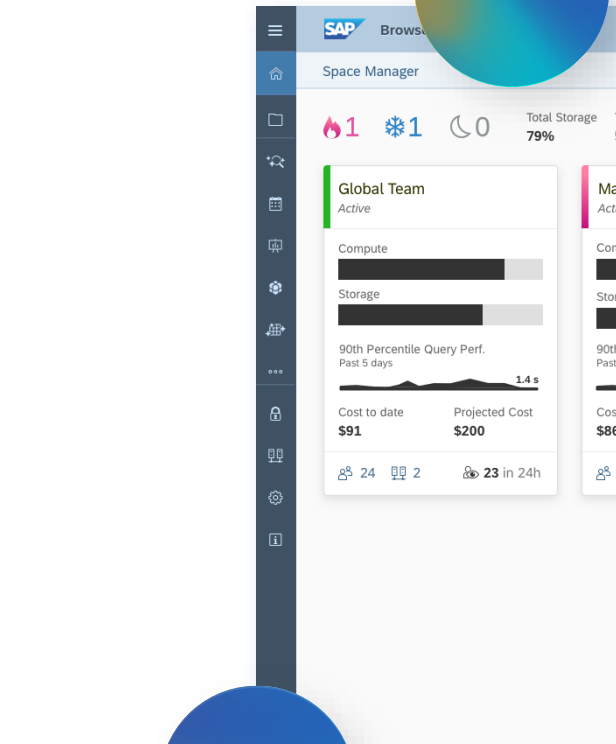
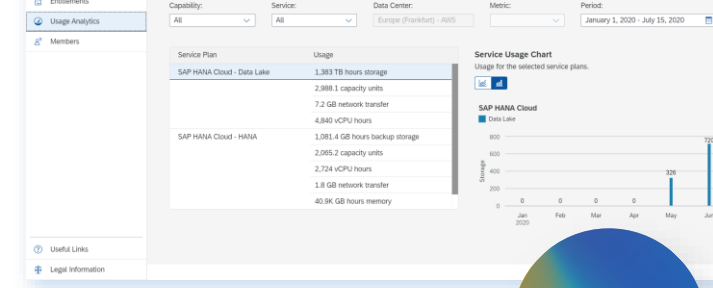
- Option to have customer-managed encryption keys (BYOK) (Planned for Q1 2022)
- Option to run SAP Analytics Cloud in the EU Access service from SAP based in Frankfurt and also on Microsoft Azure
- SAP HANA Cloud customer-controlled encryption keys
- Option to run SAP HANA Cloud in the EU Access service from SAP

Optimized view experience on SAP Analytics Cloud

- Change in the way stories are rendered in the browser, providing higher levels of performance and usability to end users
- Added support for analytics designer as a controlled release with new features (planned for Q1 2022)

SAP HANA Cloud Scale-Out

- Beta available since Q4 2021



Enterprise AI and Embedded AI by SAP

Dr. Feiyu Xu





IMPLICIT
KNOWLEDGE

Predator family tree



EXPLICIT
KNOWLEDGE





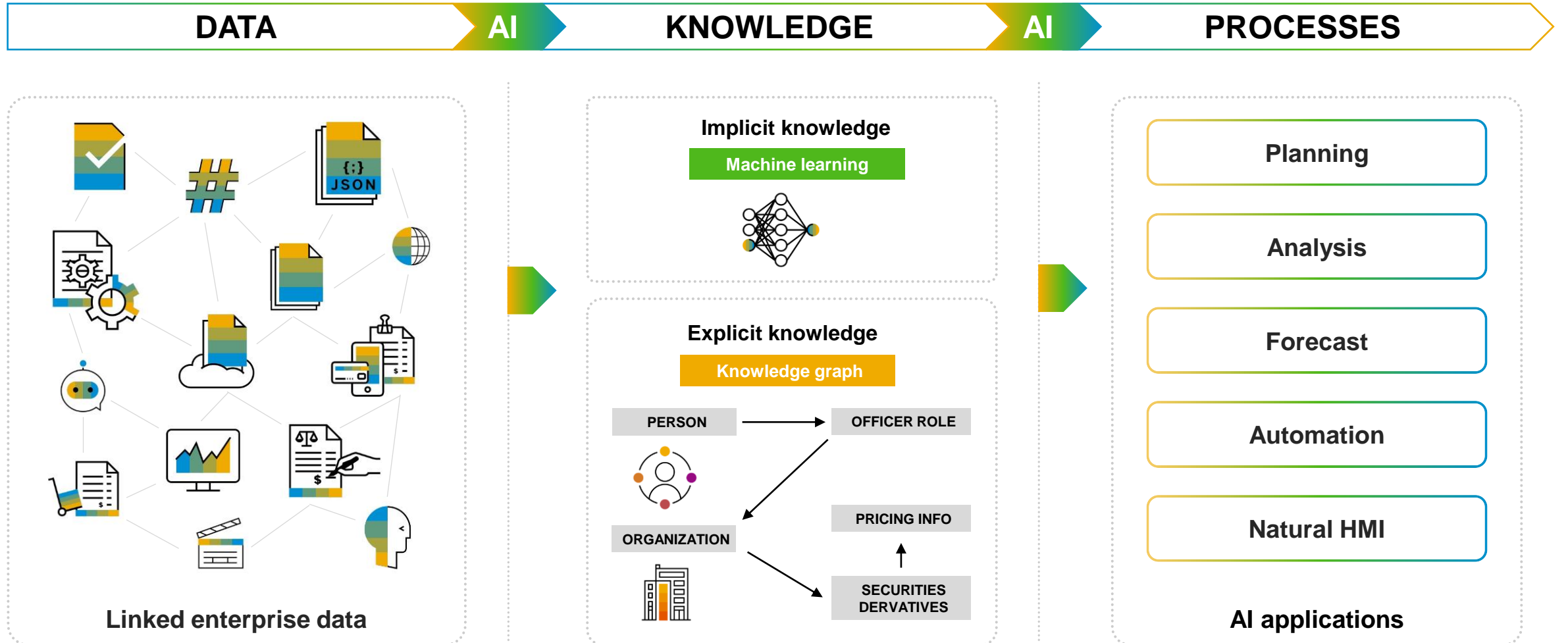
IMPLICIT



EXPLICIT



AI is the vehicle for SAP to realize the Intelligent Enterprise vision



AI in Industries



From embedded AI to bring-your-own models

AI integrated into business processes and solutions

Intercompany reconciliation Sales order automation SAP Cash Application Workflow Intelligence SAP Litmos personalized learning recommendations Returnable packaging Product & Pricing Recommendations Intelligent expense scanning Automatic invoice processing Digital assistant

SAP AI Business Services

Service Ticket Intelligence Data Attribute Recommendation Document Information Extraction Business Entity Recognition

SAP Conversational AI

Bot Design Bot Deployment Bot Analytics

SAP Process Automation

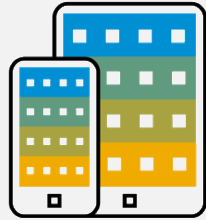
Workflow RPA Business Rules Process Visibility

SAP AI Core
SAP AI Launchpad

SAP HANA

SAP Data Intelligence

Optimize Existing Processes with SAP AI Business Services



[SAP AI Business Services](#) provide strategic machine learning capabilities that help you automate and optimize processes while enriching the customer experience. These reusable services are available on SAP Business Technology Platform.

Business document processing



Business Entity Recognition

Detects and highlights named entities in unstructured text



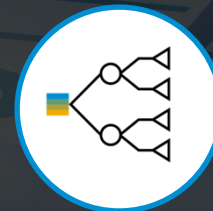
Document Information Extraction

Automatically extracts information from unstructured documents



Document Classification

Classifies unstructured documents



Data Attribute Recommendation

Automates creation, maintenance, and management of structured data



Invoice Object Recommendation

Recommends general ledger accounts and cost centers for invoices without order reference

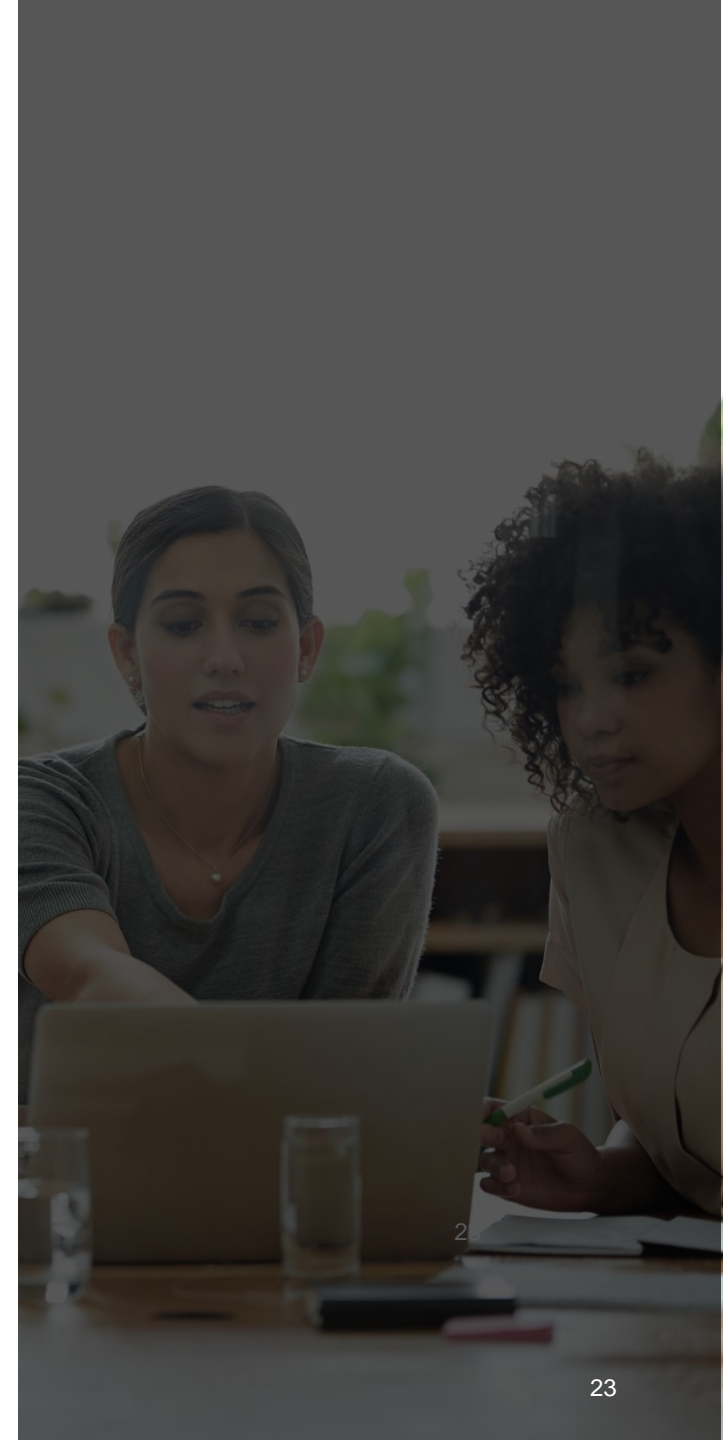
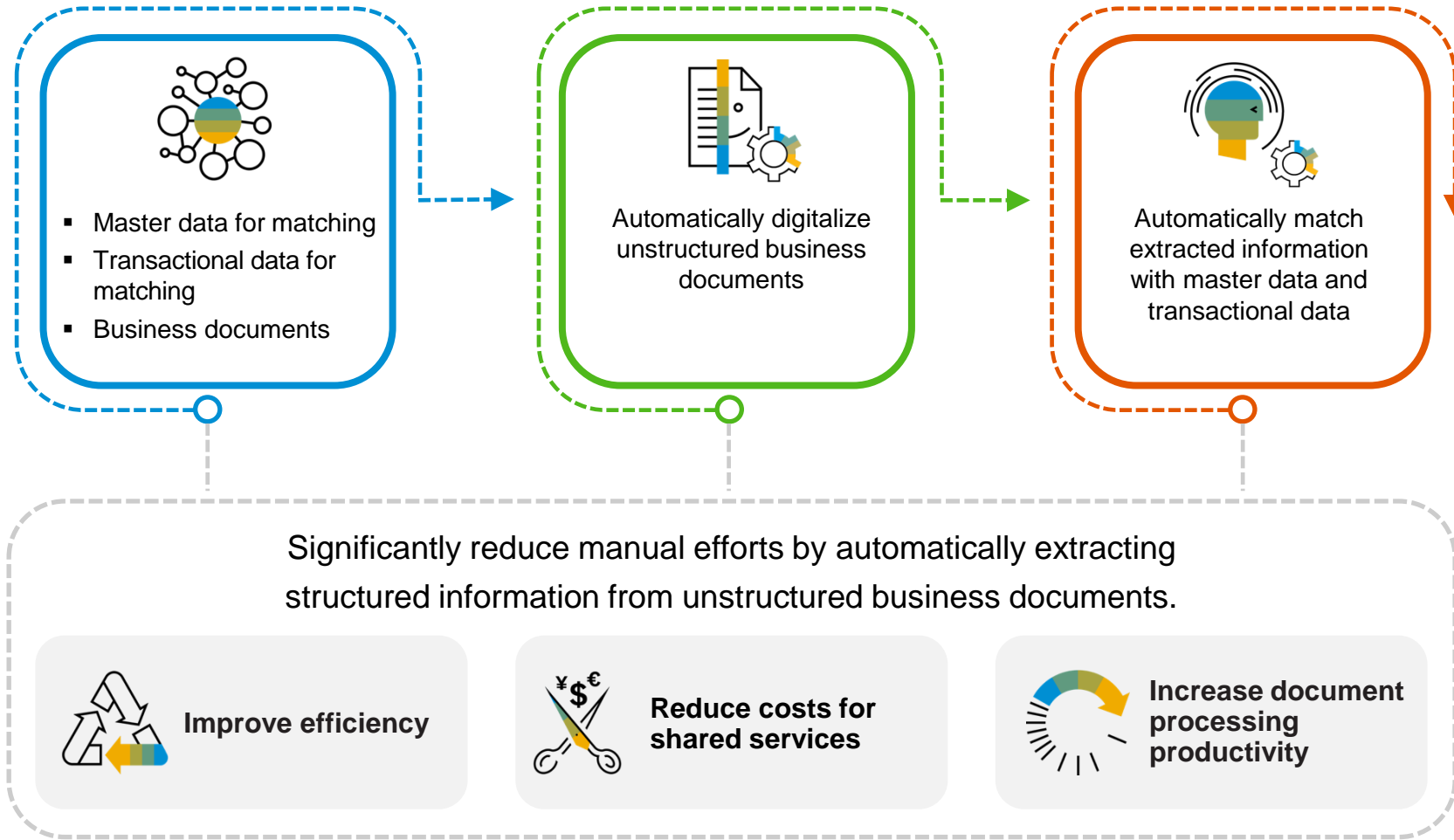


Service Ticket Intelligence

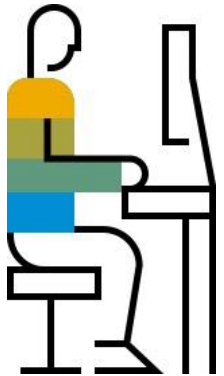
Classifies and recommends tickets automatically

Available via CPEA and SAP Store

Document Information Extraction



Problem: Large amounts of incoming business documents



John,
AP-Clerk

**Time2Go
Company**

Your Company
M. Max Apfel-Birne
Birkenstr. 24
54321 Birnenstadt

Contact:
Time2Go Company
Am Apfelbau 13
12345 Apfelstadt
Tel. +1134/43215
Date: 01.11.2013
Invoice n°: 123456
Customer n°: 0987

Invoice

Amount	Unit	Object	Price
1400	Pc.	Apples	\$1,684.-
120	Kg	Nuts	\$2.000
Total Amount			\$ 3,684.-
19% taxes incl.			

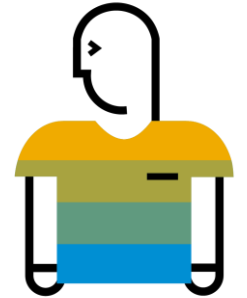
To pay until 11.12.2013

Time2Go Company
Am Apfelbau 13
12345 Apfelstadt

DE12 123412341234
Apfelbank
XYZ1234ZXY

Company	Time2Go Company
Supplier ID	009753
Invoice N°	123456
Amount	3684.00
Currency	USD
Date	2013-11-01
Position 1	Amount: 1400 Unit: PC Amount: 1684.00 Description: Apples
Position 2	Amount: 120 Unit: KG Amount: 2000.00 Description: Nuts

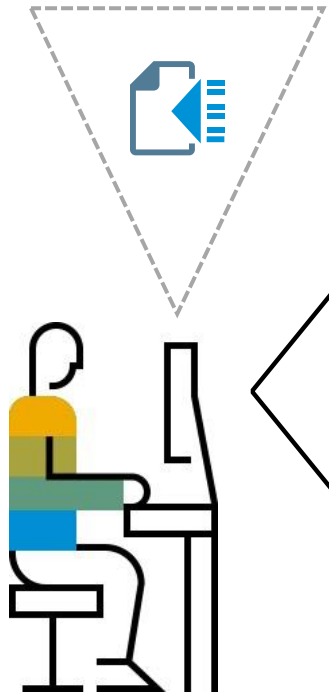
*Enrichment
happens
manually*



John,
spends much time
on searching and
matching the right
information



Solution: Document Information Extraction



John,
AP-Clerk

**Time2Go
Company**

Your Company
M. Max Apfel-Birne
Birkenstr. 24
54321 Birnenstadt

Contact:
Time2Go Company
Am Apfelbau 13
12345 Apfelstadt
Tel. +1134/43215
Date: 01.11.2013
Invoice n°: 123456
Customer n°: 0987

Invoice

Amount	Unit	Object	Price
1400	Pc.	Apples	\$1,684.-
120	Kg	Nuts	\$2.000
Total Amount			\$ 3,684.-

19% taxes incl.

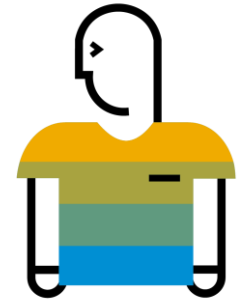
To pay until 11.12.2013

Time2Go Company
Am Apfelbau 13
12345 Apfelstadt

DE12 123412341234
Apfelbank
XYZ1234ZXY

Company	Time2Go Company
Supplier ID	009753
Invoice N°	123456
Amount	3684.00
Currency	USD
Date	2013-11-01
Position 1	Amount: 1400 Unit: PC Amount: 1684.00 Description: Apples
Position 2	Amount: 120 Unit: KG Amount: 2000.00 Description: Nuts

Enrichment happens automatically



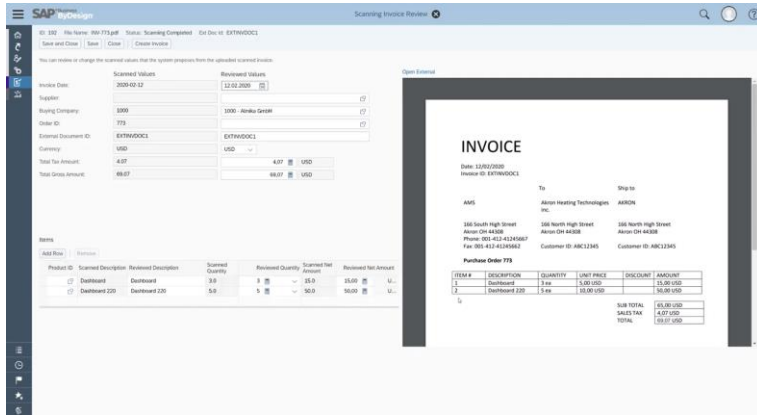
John,
Can now do more
value-adding
tasks



Consumption options

Standard Integration

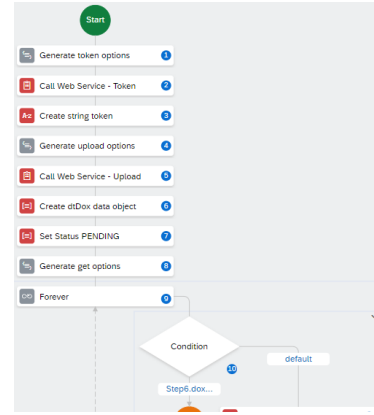
(Integrated into SAP Business Applications)



- [SAP Concur Invoice Capture](#)
- [SAP Cash Application](#) (Payment Advice Extraction)
- [SAP Business ByDesign](#) (Intelligent Invoice Scanning)
- [SAP Business ByDesign](#) (Mobile Expense Scanning)
- [SAP Business One 10.0](#) (Intelligent Invoice Scanning)
- [SAP S/4HANA Cloud 2011](#) (Sales Order Automation)
- [SAP S/4HANA Document Management System](#) (Classification)
- [SAP Shared Service Framework for Finance](#) (Email Processing)

Custom Automation Scenarios

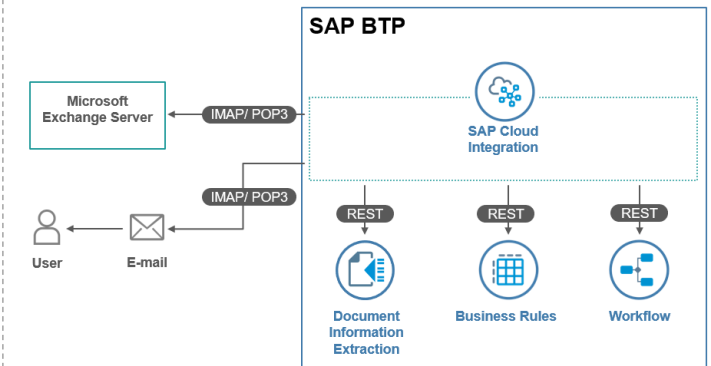
(SAP Intelligent RPA)



- **!!NEW!!** [Smart Document Extraction using SAP Intelligent RPA](#) (2109 release)
- [Combining Document Information Extraction and SAP Intelligent RPA 1.0](#), incl. [Bot Template](#), [webinar](#)
- [Integrate Document Information Extraction with SAP Intelligent RPA 2.0](#), incl. [Bot Template](#)
- [Automate Processing of Email Attachments using ML and Bots with SAP Intelligent RPA 2.0](#), incl. [Customer Reference](#)

Full Extension Flexibility

(SAP Business Technology Platform)



- [Handling Incoming Sales Orders with Business Technology Platform](#)
- Integration packages for SAP Cloud Integration on SAP API Business Hub:
 - ✓ [Enterprise E-mail Inbox integration with Document Information Extraction](#) (incl. [blog](#))
 - ✓ [Enterprise E-mail Inbox integration with Business Entity Recognition](#)
- [Manage Invoices without POs using Document Information Extraction and SAP Workflow Management](#)

Engagement Options



Ready to Use

- Available as AI Business Service on SAP BTP via **Cloud Platform Enterprise Agreement**, on **SAP Store** or as **Pay-as-you-go** model
- Available as **Test Demo & Development** for Partners
- Available on following Data Centers: EU10, EU11, JP10, US10, AP10
- Many supported [document types](#) and [languages](#)

[SAP HELP
PORTAL](#)

[SAP DISCOVERY
CENTER](#)



Ready to Test

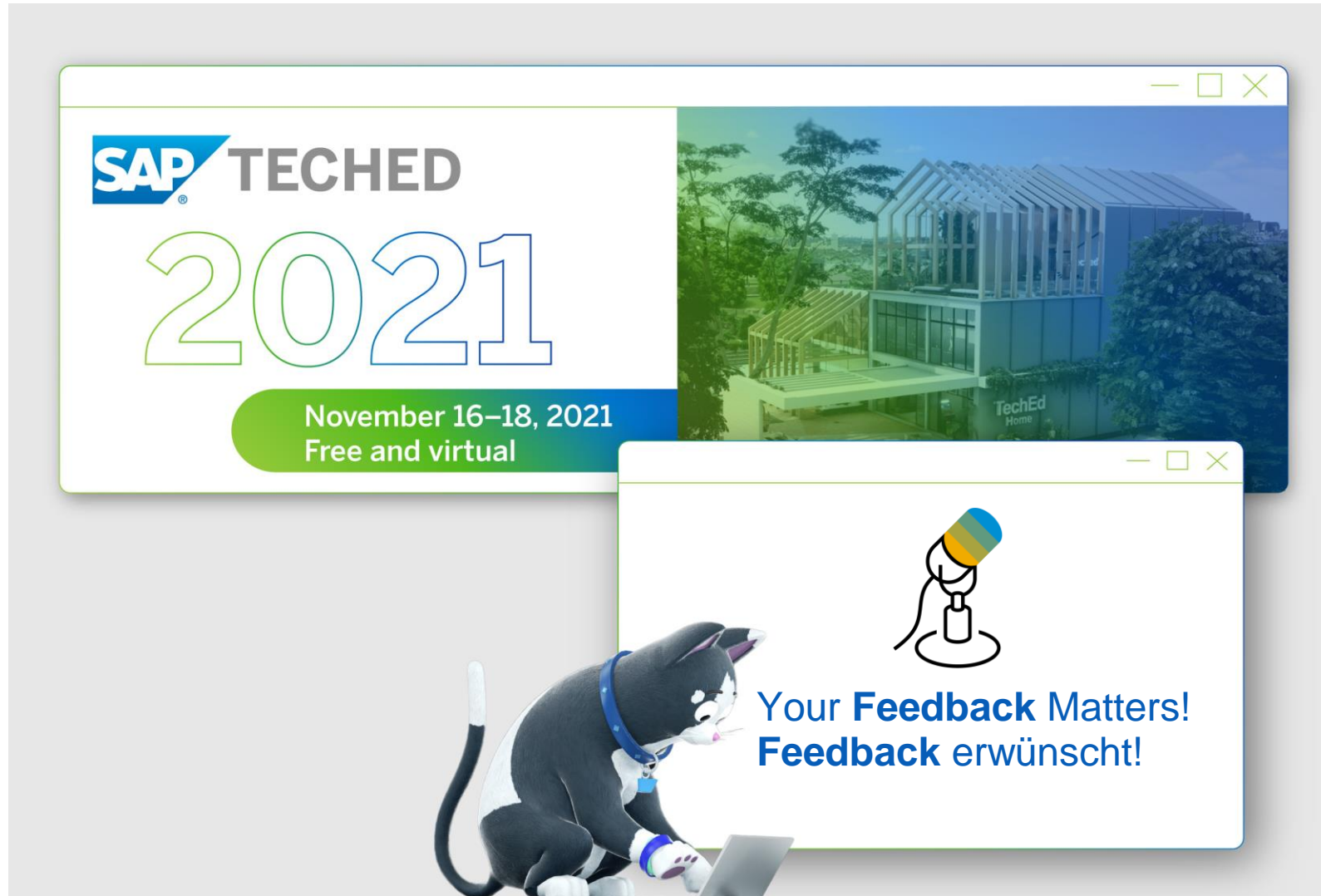
Test the service on your own business documents with SAP BTP Trial and dedicated **Tutorial Missions**

- [Use Machine Learning to Extract Information from Business Documents and Enrich Data](#)
- [Shape Machine Learning to Process Standard Business Documents](#)
- [Shape Machine Learning to Process Custom Business Documents](#)

[SAP API
BUSINESS HUB](#)

[SAP
COMMUNITY](#)

Share Your Feedback!



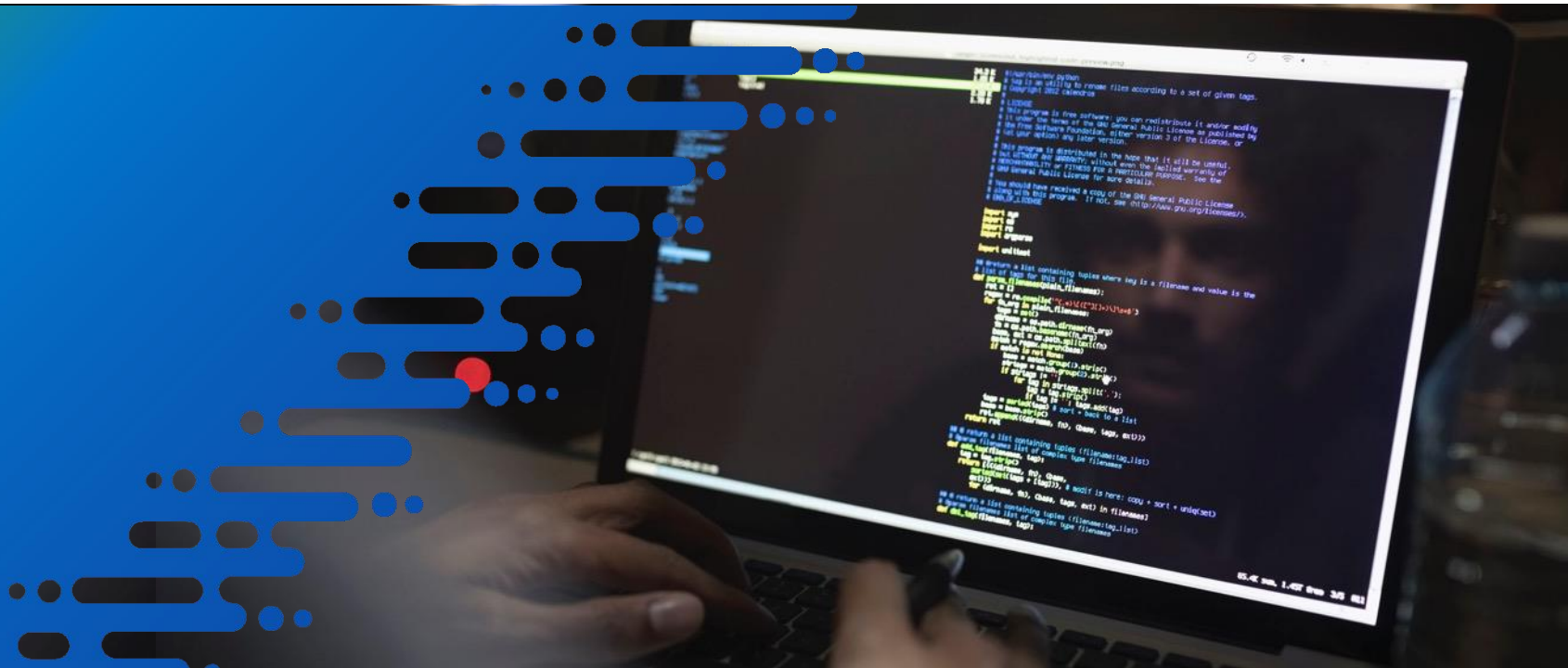
The image features a promotional graphic for SAP TechEd 2021. On the left, a white box contains the SAP logo, the text 'TECHED', and '2021' in large, outlined letters. Below this, a green and blue banner reads 'November 16-18, 2021' and 'Free and virtual'. To the right is a photograph of a modern glass building with the text 'TechEd Home' at the bottom. In the foreground, a black and white cartoon cat sits on a laptop. A white window with a microphone icon and the text 'Your Feedback Matters! Feedback erwünscht!' is overlaid on the scene.

SAP TECHED
2021
November 16-18, 2021
Free and virtual

TechEd Home

Your **Feedback** Matters!
Feedback erwünscht!

Questions?



Thank you.

Follow us



www.sap.com/contactsap

© 2022 SAP SE or an SAP affiliate company. All rights reserved.

No part of this publication may be reproduced or transmitted in any form or for any purpose without the express permission of SAP SE or an SAP affiliate company.

The information contained herein may be changed without prior notice. Some software products marketed by SAP SE and its distributors contain proprietary software components of other software vendors. National product specifications may vary.

These materials are provided by SAP SE or an SAP affiliate company for informational purposes only, without representation or warranty of any kind, and SAP or its affiliated companies shall not be liable for errors or omissions with respect to the materials. The only warranties for SAP or SAP affiliate company products and services are those that are set forth in the express warranty statements accompanying such products and services, if any. Nothing herein should be construed as constituting an additional warranty.

In particular, SAP SE or its affiliated companies have no obligation to pursue any course of business outlined in this document or any related presentation, or to develop or release any functionality mentioned therein. This document, or any related presentation, and SAP SE's or its affiliated companies' strategy and possible future developments, products, and/or platforms, directions, and functionality are all subject to change and may be changed by SAP SE or its affiliated companies at any time for any reason without notice. The information in this document is not a commitment, promise, or legal obligation to deliver any material, code, or functionality. All forward-looking statements are subject to various risks and uncertainties that could cause actual results to differ materially from expectations. Readers are cautioned not to place undue reliance on these forward-looking statements, and they should not be relied upon in making purchasing decisions.

SAP and other SAP products and services mentioned herein as well as their respective logos are trademarks or registered trademarks of SAP SE (or an SAP affiliate company) in Germany and other countries. All other product and service names mentioned are the trademarks of their respective companies.

See www.sap.com/trademark for additional trademark information and notices.

