

TrueSTUDIO[®]

Installation Guide

COPYRIGHT

© Copyright 2009-2018 STMicroelectronics. All rights reserved. No part of this document may be reproduced or distributed without prior written consent of STMicroelectronics. The software product described in this document is furnished under a license and may only be used, or copied, according to the license terms.

TRADEMARKS

Atollic, Atollic TrueSTUDIO, Atollic TrueSTORE and the Atollic logotype are trademarks, or registered trademarks, owned by STMicroelectronics. ARM, ARM7, ARM9 and Cortex are trademarks, or registered trademarks, of ARM Limited. ECLIPSE is a registered trademark of the Eclipse foundation. Microsoft, Windows, Word, Excel and PowerPoint are registered trademarks of Microsoft Corporation. Adobe and Acrobat are registered trademarks of Adobe Systems Incorporated. All other product names are trademarks, or registered trademarks, of their respective owners.

DISCLAIMER

The information in this document is subject to change without notice and does not represent a commitment of STMicroelectronics. The information contained in this document is assumed to be accurate, but STMicroelectronics assumes no responsibility for any errors or omissions. In no event shall STMicroelectronics, its employees, its contractors, or the authors of this document be liable for any type of damage, losses, costs, charges, claims, demands, claim for lost profits, fees, or expenses of any nature or kind.

DOCUMENT IDENTIFICATION

TS-IG February 2010

REVISION HISTORY

24th December 2017 – Updated for Atollic TrueSTUDIO for STM32 v9.0.0

STMicroelectronics Software AB

Science Park
Gjuterigatan 7
SE- 553 18 Jönköping
Sweden

Email: sales@atollic.com

Web: www.atollic.com

STMicroelectronics

Web: www.st.com

Contents

Introduction.....	6
Intended Readers	6
Document Conventions	7
Section 1. Installation	8
Atollic TrueSTUDIO for STM32	9
System Requirements.....	10
Microsoft® Windows®	10
Linux	10
Hardware Requirements	10
Important Information	11
Product Installer.....	11
Installing from USB Memory	11
Product Upgrades	12
Start Product in Other Language.....	12
TrueSTUDIO Installation (Windows).....	13
TrueSTUDIO Installation (Linux)	20

Figures

Figure 1 – Installer Language Dialog	13
Figure 2 – Installer Welcome Dialog	14
Figure 3 – License Agreement Dialog.....	14
Figure 4 – Selection of GDB Servers.....	15
Figure 5 – STMicroelectronics Device Driver Installation	15
Figure 6 – STMicroelectronics Device Driver Installation Complete.....	16
Figure 7 – Choose Installation Location	16
Figure 8 – Installing Dialog	17
Figure 9 – Installation Complete	17
Figure 10 – File Association.....	18
Figure 11 – Upgrade Information.....	19
Figure 12 – Finishing the Installation	19

Tables

Table 1 – Typographic Conventions 7

INTRODUCTION

Welcome to the *Atollic® TrueSTUDIO® for STM32* Installation guide. The purpose of this document is to give directions on how to install the *Atollic TrueSTUDIO* product.

The Installation guide has been updated for *Atollic TrueSTUDIO for STM32* v9.0.0.

INTENDED READERS

This document is primarily intended for software developers or system administrators about to install the *Atollic TrueSTUDIO* product.



Please note that this manual applies to users of STM32 target devices only.

DOCUMENT CONVENTIONS

The text in this document is formatted to ease understanding and provide clear and structured information on the topics covered. The following typographic conventions apply:





Style	Use
Command	Keyboard Command or Source Code Section.
Object Name	Name of a User Interface Object (Menu, Menu Command, Button, Dialog Box, etc.) that appears on the computer screen.
<i>Cross Reference</i>	Cross reference within the document, or to an external document.
Product Name	Name of Atollic product.
	Identifies instructions specific to the Graphical User Interface (GUI).
	Identifies instructions specific to the Command Line Interface (CLI).
	Identifies Help Tips and Hints.
	Identifies a Caution.

Table 1 – Typographic Conventions



Section 1. INSTALLATION

This section provides information on how to install *Atollic TrueSTUDIO for STM32*. The following topics are covered:

- System Requirements
- Important Information
- Atollic TrueSTUDIO Installation (Windows)
- Atollic TrueSTUDIO Installation (Linux)

ATOLLIC TRUESTUDIO FOR STM32

Atollic TrueSTUDIO for STM32 is available for both Microsoft Windows and Linux.

TrueSTUDIO has the following key features:

- Built on Open Standards (Eclipse, CDT, GCC, and GDB)
- Edit, Compile & Build (No code size limitation)
- Project Management
 - MCUs and Board support
 - CMSIS-Pack project support
 - Build/Memory Analyzer
 - Stack Analyzer
 - Bug Tracking
 - Version Control
- Debug
 - Hard Fault Analyzer
 - Live Variable Watch
 - Trace (SWV, ETM, ETB, MTB)
 - Statistical Profiling
 - RTOS-aware Debug
 - Multi Project Debug

SYSTEM REQUIREMENTS

Atollic TrueSTUDIO has been tested and verified on the following Microsoft Windows and Linux versions.

MICROSOFT® WINDOWS®

- Microsoft® Windows® Vista (32-bit version)
 - Microsoft® Windows® Vista (64-bit version)
 - Microsoft® Windows® 7 (32-bit version)
 - Microsoft® Windows® 7 (64-bit version)
 - Microsoft® Windows® 8 (64-bit version)
 - Microsoft® Windows® 10 (64-bit version)
-

LINUX

- 64-bit distribution with 32-bit C runtime libraries installed
- SysV compatible Linux system

Atollic TrueSTUDIO for Linux is only available as a 64-bit application and is supported on the following distributions:

- Ubuntu 16.04 LTS 64-bit (using Unity or Gnome 3 as recommended desktop)
 - Fedora 25 64-bit (using Xfce4 as recommended desktop)
-

HARDWARE REQUIREMENTS

The following Hardware Requirements apply:

- 2 GB RAM minimum and 4 GB RAM recommended
- 4 GB of free hard disk space

IMPORTANT INFORMATION

This section contains important information on installing the product.

PRODUCT INSTALLER

The latest version of the *Atollic TrueSTUDIO* installer can be downloaded from the Atollic web-site www.atollic.com

INSTALLING FROM USB MEMORY

Atollic does not recommend launching the *Atollic TrueSTUDIO* installer directly from a USB memory. Instead, please copy the executable installation file from the USB memory to the local hard disk drive of the computer. Please execute the installation from the hard disk drive.

If installation from USB memory is still preferred, please make sure that the USB memory is not write-protected. Please also make sure that there is at least 6 GB of free memory, beyond the space the space occupied by installation executable. The extra space is required for temporary files during the installation.

Please do not remove the USB memory from the computer until the installation process is completely finished, as this will make the installation fail.

PRODUCT UPGRADES

New versions of the product can be installed in parallel with older versions.

START PRODUCT IN OTHER LANGUAGE

When a non-English language has been used to install *Atollic TrueSTUDIO* the product can run using the selected language or English. Start *Atollic TrueSTUDIO* from command line using following options:

English	TrueSTUDIO.exe -nl en
Japanese	TrueSTUDIO.exe -nl ja
Korean	TrueSTUDIO.exe -nl ko
Simplified Chinese	TrueSTUDIO.exe -nl zh

It can be convenient in this case to make a shortcut to start *Atollic TrueSTUDIO* in the preferred language.

TRUESTUDIO INSTALLATION (WINDOWS)

This section describes how to install the *Atollic TrueSTUDIO* product on Microsoft Windows. The product installer will install the *Atollic TrueSTUDIO* product.

The *Atollic TrueSTUDIO* product is delivered as an executable installer. Please ensure that the user account, from which the installer is launched, has administrative privileges.

1. Launch the product installer (.exe-file)
E.g `TrueSTUDIO_for_ARM_windows_x86_vX.Y.Z_YYYYMMDD-HHSS`
2. During the installation process, Microsoft® Windows® may display a dialog, “Do you want to allow this app to make changes to your device” with info “Verified publisher: Atollic AB”. Please accept (“YES”) to let the installer continue.
3. Wait for the **Installer Language** dialog to be displayed. Please select the language that should be used for the installing process, and also added to the final installation:

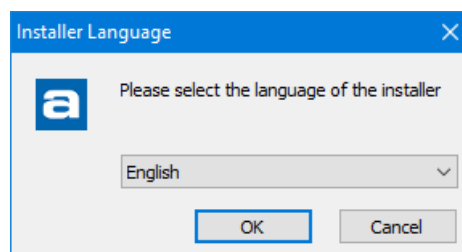


Figure 1 – Installer Language Dialog

4. Wait for the installer **Welcome** dialog to be displayed:

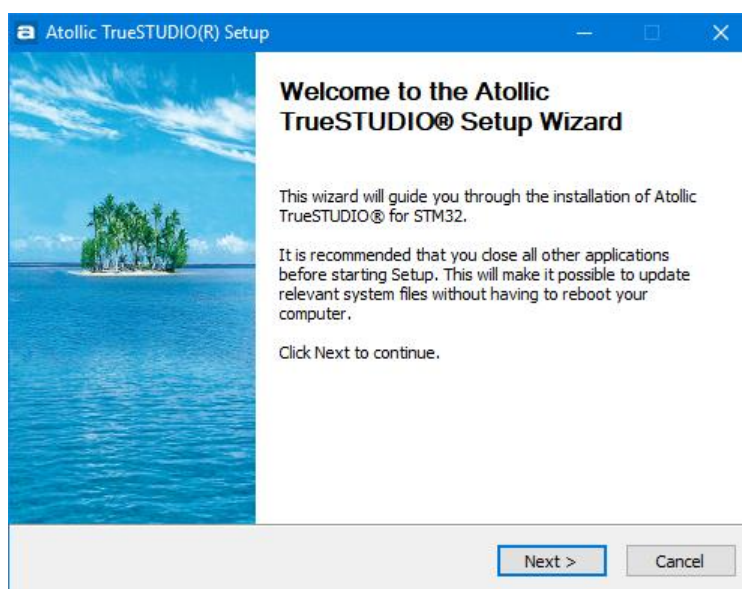


Figure 2 – Installer Welcome Dialog

5. Click **Next** to view the **License Agreement** dialog:

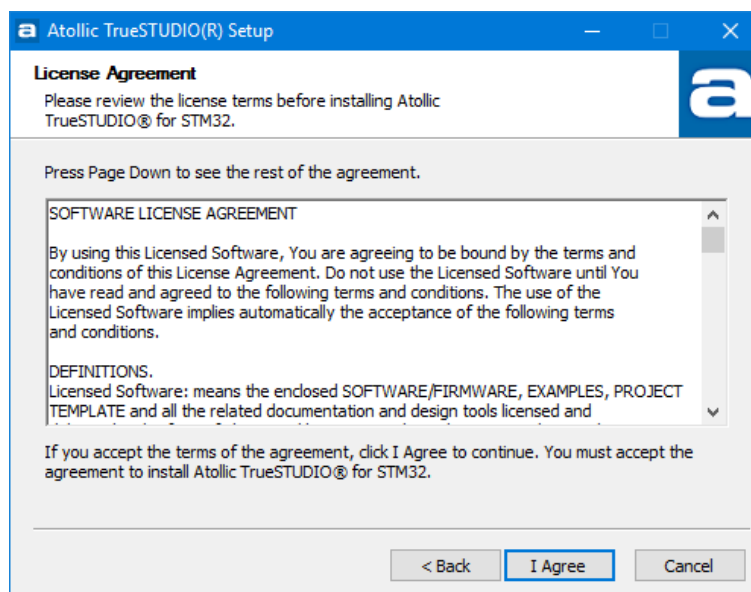


Figure 3 – License Agreement Dialog

Read the license agreement. Click **I Agree** to accept the terms of the agreement, or **Cancel** to abort the installation. If the agreement is accepted, the installation wizard will display the **Choose Components** dialog.

6. Wait for the **Choose Components** dialog to be displayed.

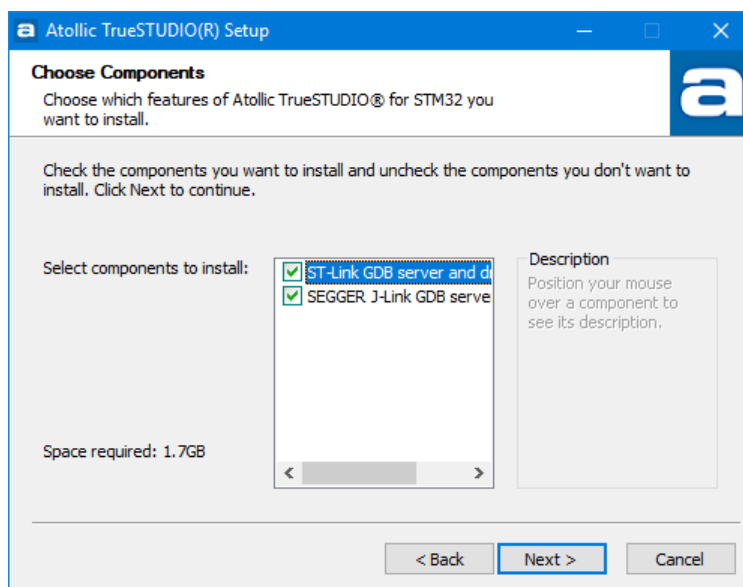


Figure 4 – Selection of GDB Servers

Select the GDB Server components to be installed together with **Atollic TrueSTUDIO**. A server is needed for each type of JTAG probe that are to be used for debugging with **Atollic TrueSTUDIO**.

- a. If installation of ST-Link GDB Server is selected STMicronics device drivers using the Device Driver Installation Wizard will be started in a thread. Click **Next** to start the device driver installation required by ST-Link.

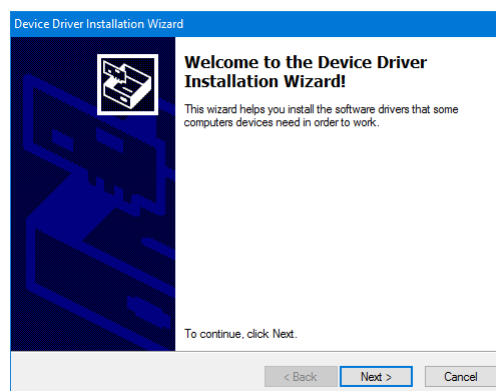


Figure 5 – STMicronics Device Driver Installation

- b. Click **Finish** to complete installation of STMicronics device drivers.

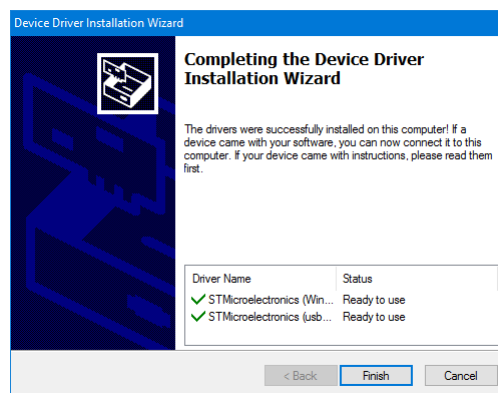


Figure 6 – STMicroelectronics Device Driver Installation Complete

7. Wait for the **Choose Installation Location** dialog to be displayed.

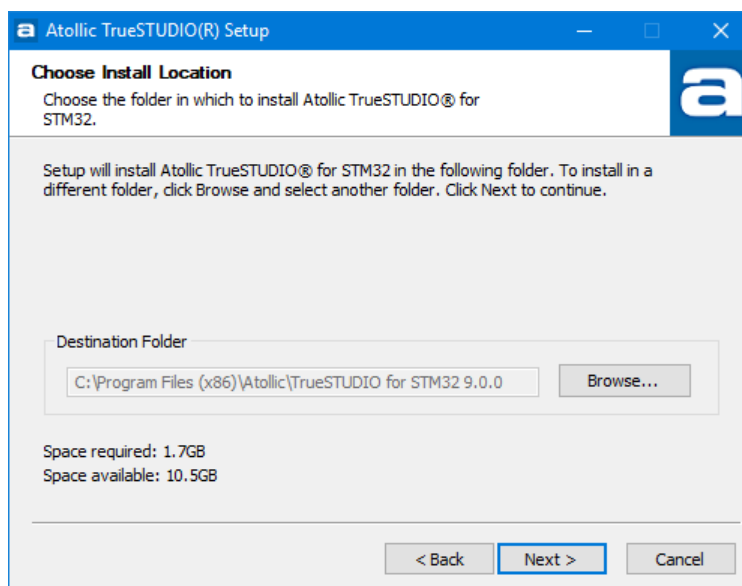


Figure 7 – Choose Installation Location

Click the **Browse** button to optionally change the default installation directory.

8. Please click **Next** to start the installation.

The drivers for the selected GDB-servers will be installed in parallel with this installation of *Atollic TrueSTUDIO* from here on.

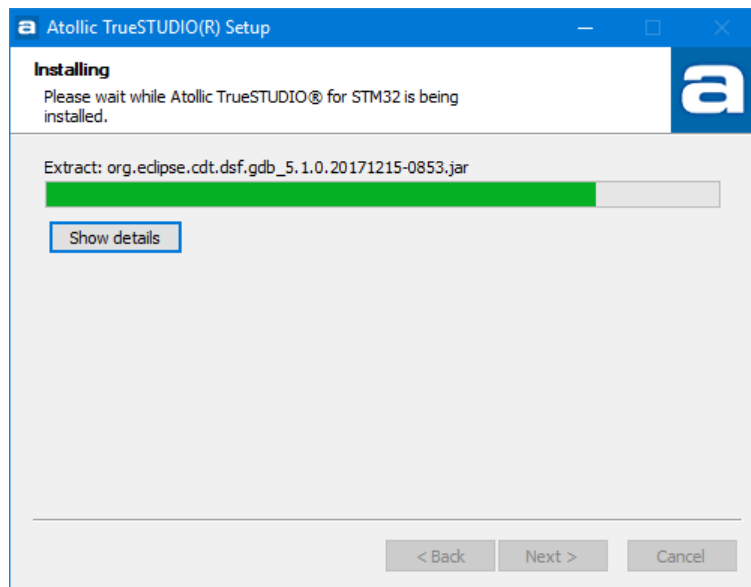


Figure 8 – Installing Dialog

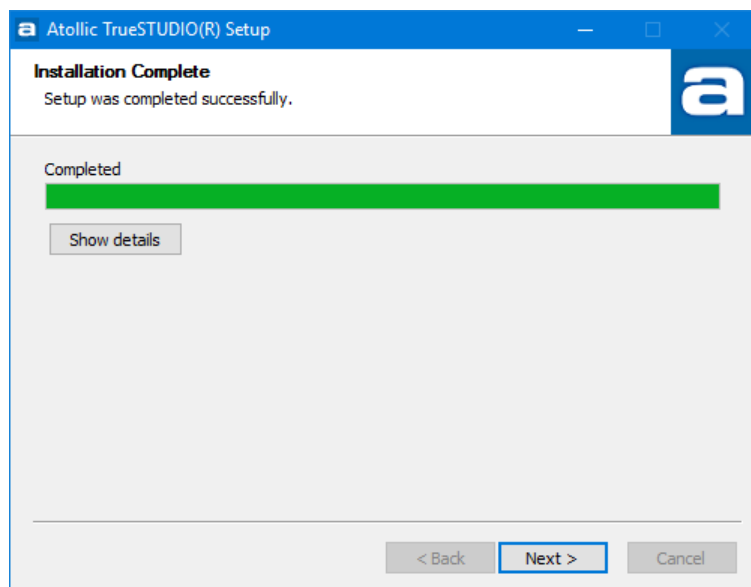


Figure 9 – Installation Complete

9. Click **Next** and the **File Association** dialog is displayed.

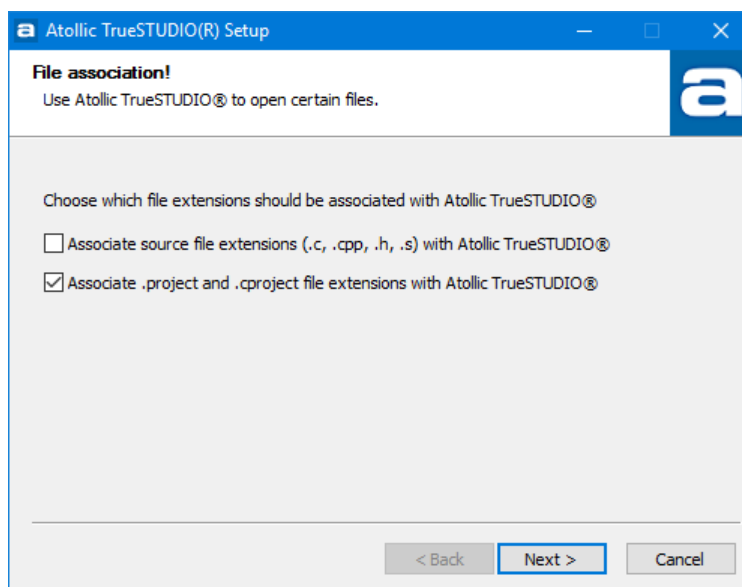


Figure 10 – File Association

Please enter the desired associations between file-extensions and **Atollic TrueSTUDIO**. By associating the .project-file, it is possible to automatically import and start editing new projects, just by double-clicking on the file.

10. Please click **Next** and a page showing information that is relevant to users who are upgrading from a previous version of **Atollic TrueSTUDIO** is displayed. Please read this information carefully when upgrading from a previous version.

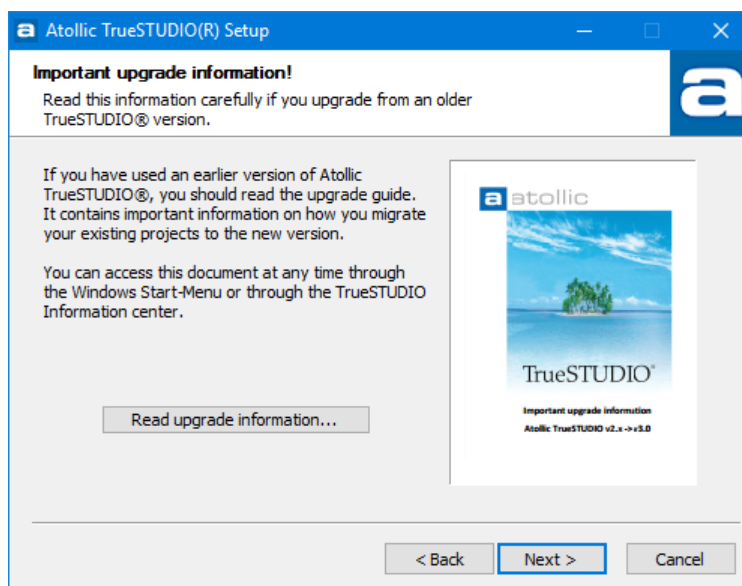


Figure 11 – Upgrade Information

11. Please click **Next** to continue to the final step of the installation process.

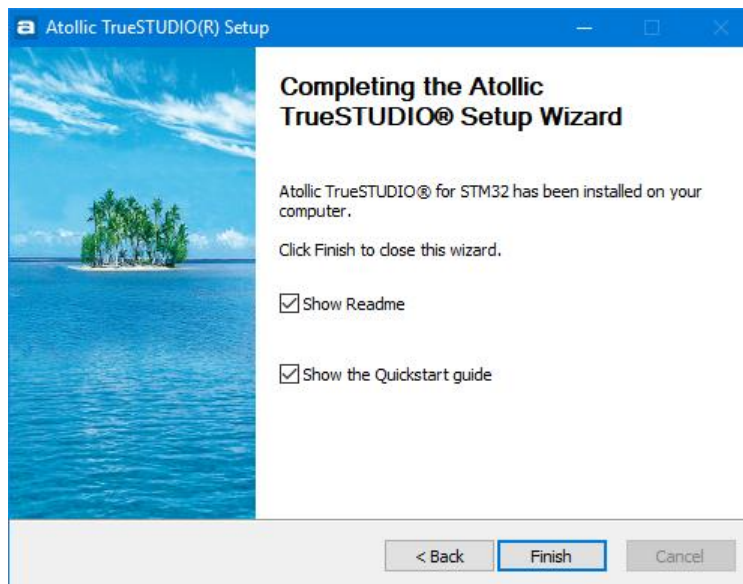


Figure 12 – Finishing the Installation

12. Please click **Finish** to close the installation program.

The *Atollic TrueSTUDIO* product is now installed and ready to be used.

TRUESTUDIO INSTALLATION (LINUX)

Install and start *Atollic TrueSTUDIO* on Linux using the following three steps.

1. Extract the downloaded archive, command example.

```
$ tar -xvf ~/Downloads/Atollic_TrueSTUDIO_for_STM32_linux_x86_64_9.0.0_yyyymmdd-hhmm.tar.gz
```

2. Run `install.sh` to install the product

The installation will prompt for install location and license agreement acceptance.

```
$ cd Atollic_TrueSTUDIO_for_ARM_9.0.0_installer && sudo ./install.sh
```



Read the **End User Software License Agreement** terms carefully. If the terms are not accepted, delete extracted files and do not use the Software.

3. Start *Atollic TrueSTUDIO* from the Applications menu, or alternatively start from the command line:

```
$ cd /opt/Atollic_TrueSTUDIO_for_STM32_9.0.0/ide && ./TrueSTUDIO
```