

ATV FULL LINE



DURABLE. COMFORTABLE. INDESTRUCTIBLE.



The difference between just plain tough and Real World Tough? Everything. Yamaha Grizzly ATVs have a proven track record of class-leading durability, off-road capability and comfort. With a mile-long list of exclusive features, engineered to tame the hardest-working farms and ranches, the most remote hunting terrain and the roughest, most rutted-out trails. Yamaha Grizzly ATVs. Built to tackle every test – especially the test of time.



Shown with optional accessories.

THE FACE OF A LEGEND.

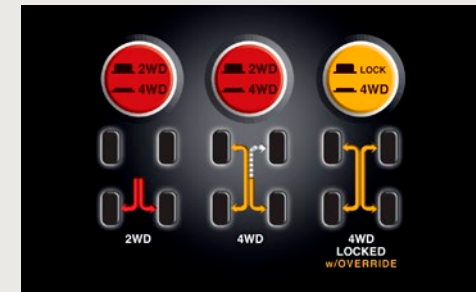


ASSEMBLED IN AMERICA. ENGINEERED TO CONQUER YOUR WORLD.

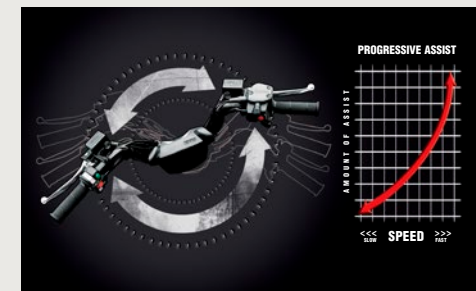
All Yamaha Grizzly ATVs are proudly assembled in the U.S. with class-leading features the competition just doesn't have: the world's most advanced and durable Ultramatic® Automatic drive with all-wheel engine braking; 3-position On-Command® that lets you switch between 2WD, limited-slip 4WD and fully-locked diff 4WD with the push of a button; and legendary Yamaha Electric Power Steering. All designed to deliver industry-topping performance, comfort and reliability.



ULTRAMATIC - The world's most advanced ATV drive system. An automatic centrifugal clutch maintains constant belt tension for reduced wear and uses a sprag clutch for all-wheel downhill engine braking in 4WD mode and reverse.



ON-COMMAND - Three-position On-Command 4WD system lets you switch between 2WD, limited-slip 4WD and a fully locked differential 4WD - all with the push of a button.



ELECTRIC POWER STEERING - Provides progressive assist at slow speeds and over rough terrain while maintaining optimized rider feedback, superior comfort and terrainability.

GRIZZLY 700 EPS



SPECIFICATIONS

| | |
|---------------------------|---|
| Engine Type | 686cc, 4-stroke, liquid-cooled single; SOHC, 4 valves |
| Bore x Stroke | 102.0 x 84.0mm |
| Compression Ratio | 10.0:1 |
| Fuel Delivery | Yamaha Fuel Injection (YFI), 44mm |
| Ignition | TCI, 32-bit ECU |
| Starting System | Electric |
| Transmission | Yamaha Ultramatic V-belt with all-wheel engine braking/H, L, N, R, P |
| Drive Train | Yamaha On-Command pushbutton; 3-way locking differential; 2WD, 4WD, locked 4WD; shaft drive |
| Suspension / Front | Independent double wishbone; 5-way preload adjustment, 7.6-in travel |
| Suspension / Rear | Independent double wishbone; 5-way preload adjustment, 9.2-in travel |
| Brakes / Front | Dual hydraulic disc |
| Brakes / Rear | Dual hydraulic disc |
| Tires / Front | AT25 x 8-12 |
| Tires / Rear | AT25 x 10-12 |
| L x W x H | 81.3 x 46.5 x 48.8 in |
| Seat Height | 35.6 in |
| Wheelbase | 49.2 in |
| Turning Radius | 126 in |
| Ground Clearance | 10.8 in |
| Fuel Capacity | 5.3 gal |
| Wet Weight* | 648 lb |
| Rack Capacity | 99 lb front/187 lb rear |
| Towing Capacity | 1,322 lb |

Color



Hunter Green Red Steel Blue Realtree AP® Matte Silver Special Edition

Shown with optional accessories.

“DARN NEAR FLAWLESS.” – *ATV Rider*

The Grizzly® 700 FI EPS is the benchmark for Real World Tough durability, reliability, comfort and performance. Its class-leading features include: exclusive Ultramatic transmission with all-wheel downhill engine braking; On-Command that lets you choose between 2WD, 4WD limited slip or 4WD with full diff lock, all with the push of a button; and the world's most advanced electric power steering. Don't need EPS? The Grizzly 700 FI offers all the other same great features. Welcome to the top.

SPECIFICATIONS

| | |
|---------------------------|---|
| Engine Type | 558cc, 4-stroke, liquid-cooled single; SOHC, 4 valves |
| Bore x Stroke | 92.0 x 84.0mm |
| Compression Ratio | 9.3:1 |
| Fuel Delivery | Yamaha Fuel Injection (YFI), 40mm |
| Ignition | TCI, 32-bit ECU |
| Starting System | Electric |
| Transmission | Yamaha Ultramatic V-belt with all-wheel engine braking/H, L, N, R, P |
| Drive Train | Yamaha On-Command pushbutton; 3-way locking differential; 2WD, 4WD, locked 4WD; shaft drive |
| Suspension / Front | Independent double wishbone; 5-way preload adjustment, 7.1-in travel |
| Suspension / Rear | Independent double wishbone; 5-way preload adjustment, 9.5-in travel |
| Brakes / Front | Dual hydraulic disc |
| Brakes / Rear | Dual hydraulic disc |
| Tires / Front | AT25 x 8-12 |
| Tires / Rear | AT25 x 10-12 |
| L x W x H | 81.3 x 46.5 x 48.8 in |
| Seat Height | 35.6 in |
| Wheelbase | 49.2 in |
| Turning Radius | 126 in |
| Ground Clearance | 10.8 in |
| Fuel Capacity | 5.3 gal |
| Wet Weight* | 648 lb |
| Rack Capacity | 99 lb front/187 lb rear |
| Towing Capacity | 1,322 lb |

Color



Hunter Green

Red

Steel Blue

Realtree AP®

Shown with optional accessories.



“THE 550cc CLASS LEADER.” – *TopSpeed*

You just can't do any better in the 550 class than the iconic Grizzly 550 FI EPS. Powered by a potent 558cc SOHC engine, it's packed with virtually every class-leading feature as its big brother, including 3-position On-Command, electric power steering and the world's most reliable Ultramatic Continuously Variable Transmission. The Grizzly 550 FI EPS—the ultimate combination of performance, features and price. And for those not needing EPS, the Grizzly 550 FI is the perfect choice.

GRIZZLY 450 EPS



SPECIFICATIONS

| | |
|---------------------------|---|
| Engine Type | 421cc, 4-stroke, liquid-cooled single; SOHC |
| Bore x Stroke | 84.5 x 75.0mm |
| Compression Ratio | 10.0:1 |
| Fuel Delivery | Mikuni® 33mm BSR |
| Ignition | DC-CDI |
| Starting System | Electric |
| Transmission | Yamaha Ultramatic V-belt with all-wheel engine braking; H, L, N, R, P |
| Drive Train | Yamaha On-Command pushbutton; 3-way locking differential; 2WD, 4WD, locked 4WD; shaft drive |
| Suspension / Front | Independent double wishbone; 6.3-in travel |
| Suspension / Rear | Independent double wishbone; 7.1-in travel |
| Brakes / Front | Dual hydraulic disc |
| Brakes / Rear | Seal oil bathed, multidisc |
| Tires / Front | AT25 x 8-12 |
| Tires / Rear | AT25 x 10-12 |
| L x W x H | 78.5 x 43.0 x 44.1 in |
| Seat Height | 33.1 in |
| Wheelbase | 48.5 in |
| Turning Radius | 118 in |
| Ground Clearance | 10.8 in |
| Fuel Capacity | 4.0 gal |
| Wet Weight* | 620 lb |
| Rack Capacity | 88 lb front/176 lb rear |
| Towing Capacity | 1,322 lb |

Color



Hunter Green



Red



Steel Blue



Realtree AP®

Shown with optional accessories.

THE ULTIMATE MIDSIZE.

Packed with many of the same industry-leading features as big brothers Grizzly 700 and 550, the Grizzly 450 EPS is a light and agile standout: Yamaha electric power steering, Ultramatic transmission with dual range (Hi/Lo) and reverse; 3-position pushbutton On-Command 4WD; sealed rear wet brake; plus lots more. From the trail to the farm to the hunt, this one's a no-brainer. And for those not needing EPS, the Grizzly 450 offers all the same features at an even greater value.

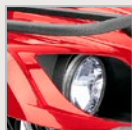
SPECIFICATIONS

| | |
|---------------------------|--|
| Engine Type | 348cc, 4-stroke, air/oil-cooled single; SOHC |
| Bore x Stroke | 83.0 x 64.5mm |
| Compression Ratio | 9.2:1 |
| Fuel Delivery | Mikuni® 33mm BSR |
| Ignition | DC-CDI |
| Starting System | Electric |
| Transmission | Yamaha Ultramatic V-belt with front/rear-wheel engine braking; F, N, R |
| Drive Train | Yamaha On-Command pushbutton; 2WD, 4WD; shaft drive |
| Suspension / Front | Independent double wishbone; 6.3-in travel |
| Suspension / Rear | Swing arm; 7.1-in travel |
| Brakes / Front | Dual hydraulic disc |
| Brakes / Rear | Fully sealed drum |
| Tires / Front | AT25 x 8-12 |
| Tires / Rear | AT25 x 10-12 |
| L x W x H | 78.1 x 42.7 x 44.1 in |
| Seat Height | 32.6 in |
| Wheelbase | 48.5 in |
| Turning Radius | 118 in |
| Ground Clearance | 9.7 in |
| Fuel Capacity | 3.8 gal |
| Wet Weight* | 568 lb |
| Rack Capacity | 88 lb front/176 lb rear |
| Towing Capacity | 1,102 lb |

Color



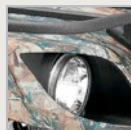
Hunter Green



Red



Steel Blue



Realtree AP®

Shown with optional accessories.



HUGE FEATURES. HUGE VALUE.

Looking for the ultimate in top-of-the-line features, durability and value? Meet the Grizzly 350. It's packed with many of the same class-leading innovations as its big brothers, but in a super-light and agile machine: Ultramatic transmission with all-wheel engine braking; 3-position On-Command 4WD for great traction and control; and class-leading turning radius for incredible handling. All built Real World Tough right here in America. Don't need 4WD? The Grizzly 350 2WD is a great option too.

ACCESSORIES



Model shown with optional accessories.

AS REAL WORLD TOUGH AS GRIZZLIES.

All Genuine Yamaha Accessories are engineered Real World Tough just like Grizzly ATVs, and made to fit, function and endure whatever you throw their way.



View the full lineup of Yamaha accessories, apparel and Yamalube products at: YamahaPartsAndAccessories.com

YAMAHA VANTAGE 2000 WINCH BY WARN®

With 2,000 lb. of pulling capacity, the Vantage 2000 offers class-leading performance and value in a small package. 5-year mechanical and 1-year electrical warranty. *Requires unit-specific mounting kit.*



HEAVY-DUTY FRONT BRUSH GUARD

Give your Grizzly an aggressive look and additional protection while on the trail with this Heavy-Duty Front Brush Guard. Tough, full coverage design and extended approach angle protection, front fender protection and integrated light mount points. Black wrinkle finish. *See special instructions when mounted with Yamaha Plow Kit.*



OVERFENDERS

Grizzly Overfenders provide a tough look, and the custom-formed design helps to protect you from water, mud and trail debris. Set includes both front and rear overfenders.





FRONT AND REAR RACK EXTENSIONS

Rack Extensions feature a rugged design and add additional function to the standard rack. Six-inch vertical extension on three sides can help secure bags, coolers, etc. Not compatible with the SecureMount® Front Large Rack.



DELUXE GUN BOOT WITH REMOVABLE GUN CASE

The Deluxe Gun Boot features a high-quality shell and a convenient padded rifle transport bag for interior cushioning and ease of transportation. The transport bag includes a zipper enclosure, durable material construction and a convenient handle.



FRAME SKID PLATE

Durable yet lightweight aluminum Frame Skid Plate provides protection against rocks and other objects. Strategically placed holes allow for easy maintenance and efficient mud drainage.

APPAREL



YAMAHA THERMAL TEE - Black
50% cotton/50% polyester regular fit thermal T-shirt. White Yamaha logo screen printed on front.



YAMAHA LONG-SLEEVE VERTICAL TEE - Charcoal
100% cotton, Yamaha logo screen printed vertically in black.



YAMAHA STACKED LOGO TEE - Brown
100% cotton, stacked Yamaha logo screen printed in white on front.



YAMAHA TUNING FORK TEE - Heathered Navy
Cotton/polyester, regular fit, screen printed Yamaha Tuning Fork logo on hip and Yamaha logo on left chest.



YAMAHA HEATHERED HOODED SWEATSHIRT - Army Heather
Cotton/polyester blend, Yamaha screen printed across front.



YAMAHA REALTREE® HAT - 60% cotton/40% polyester and mesh back.

CLASS LEADING. PERFORMANCE TOPPING.



From the reigning 3-straight AMA® Pro ATV MX Champion YFZ®450R to the undisputed king of big-bore sport ATVs, the Raptor® 700R, Yamaha rules the sport ATV world. Featuring class-leading engine performance with monstrous torque, and state-of-the-art chassis and industry-leading suspensions, Yamaha Sport ATVs perform above all the rest. Ride one for yourself. And experience all the adrenaline-pumping, excitement that only Yamaha can deliver.



NEW RAPTOR 700R

SPECIFICATIONS

| | |
|---------------------------|--|
| Engine Type | 686cc, 4-stroke, liquid-cooled; SOHC, 4 valves |
| Bore x Stroke | 102.0 x 84.0mm |
| Compression Ratio | 10.0:1 |
| Fuel Delivery | Electronic fuel injection, Mikuni® 44mm |
| Ignition | TCI, 32-bit ECU |
| Starting System | Electric |
| Transmission | 5-speed w/ reverse; wet multiplate clutch |
| Drive Train | 2WD; sealed O-ring chain |
| Suspension / Front | Independent double wishbone w/piggyback High-/Lo-speed compression, rebound and threaded preload adjustment, 9.1-in travel |
| Suspension / Rear | Cast aluminum swing arm w/rebound, High-/Lo-speed compression and threaded preload adjustment, 10.1-in travel |
| Brakes / Front | Dual ventilated hydraulic disc, twin piston |
| Brakes / Rear | Ventilated hydraulic disc, twin piston |
| Tires / Front | AT22 x 7-10 |
| Tires / Rear | AT20 x 10-9 |
| L x W x H | 72.6 x 45.5 x 43.9 in |
| Seat Height | 32.7 in |
| Wheelbase | 50.4 in |
| Ground Clearance | 9.5 in |
| Fuel Capacity | 2.9 gal |
| Wet Weight* | 422 lb |



CLICK HERE TO LEARN MORE ABOUT THE RAPTOR 700R

Color



Team Yamaha Blue/White



Black/White**



CLICK HERE TO SEE THE RAPTOR 700R IN ACTION



THE KING. NOW EVEN MORE POWERFUL.

How do you make the top-ranked, best-selling big-bore sport ATV even better? For starters, we revised its monstrous fuel-injected 686cc engine to deliver even more power across the full rpm range. Next, we gave it a new exhaust system with new muffler for more rapid fuel combustion. Throw in a host of other goodies, like new front tires and all-new adjustable front and rear suspension with KYB®-made aluminum shocks, and you've got the world's ultimate performance sport ATV. Now better than ever.

Shown with optional accessories. **Only the Raptor 700R SE available in Black/White.

NEW RAPTOR 700



SPECIFICATIONS

| | |
|---------------------------|--|
| Engine Type | 686cc, 4-stroke, liquid-cooled; SOHC, 4 valves |
| Bore x Stroke | 102.0 x 84.0mm |
| Compression Ratio | 10.0:1 |
| Fuel Delivery | Electronic fuel injection, Mikuni® 44mm |
| Ignition | TCI, 32-bit ECU |
| Starting System | Electric |
| Transmission | 5-speed w/ reverse; wet multiplate clutch |
| Drive Train | 2WD; sealed O-ring chain |
| Suspension / Front | Independent double wishbone and threaded 5-way preload adjustment, 9.1-in travel |
| Suspension / Rear | Cast aluminum swing arm with preload adjustment, 10.1-in travel |
| Brakes / Front | Dual ventilated hydraulic disc, twin piston |
| Brakes / Rear | Ventilated hydraulic disc, twin piston |
| Tires / Front | AT22 x 7-10 |
| Tires / Rear | AT20 x 10-9 |
| L x W x H | 72.6 x 45.5 x 43.9 in |
| Seat Height | 32.7 in |
| Wheelbase | 50.4 in |
| Ground Clearance | 9.5 in |
| Fuel Capacity | 2.9 gal |
| Wet Weight* | 422 lb |

Color



Team Yamaha Blue/White

Shown with optional accessories.

OUTRAGEOUS PERFORMANCE. AND PRICE.

Want top-tier performance without the top-of-the-line price? Check out the new Raptor 700. It packs the same wallop punch as the new Raptor 700R, now with even more mid- and top-range power. And like the 700R, we've updated the exhaust, suspension and wheels to accommodate all that additional power—all while keeping the price in check. Incredible performance, comfort *and* value? You really can have it all.

SPECIFICATIONS

| | |
|---------------------------|--|
| Engine Type | 449cc, liquid-cooled w/ fan; 4-stroke, DOHC, titanium 5-valve |
| Bore x Stroke | 95.0 x 63.4mm |
| Compression Ratio | 11.8:1 |
| Fuel Delivery | Yamaha Fuel Injection (YFI), 42mm |
| Ignition | TCI: Transistor-Controlled Ignition |
| Transmission | 5-speed manual clutch |
| Drive Train | 2WD; sealed O-ring chain, eccentric adjustment |
| Suspension / Front | Independent double wishbone w/ Kashima coated piggyback shocks, high/low speed compression, rebound and threaded preload adjustment; 9.8-in travel |
| Suspension / Rear | Cast aluminum swingarm w/ piggyback high/low speed compression, rebound and threaded preload adjustment; 11.0-in travel |
| Brakes / Front | Dual ventilated hydraulic disc, twin piston |
| Brakes / Rear | Wave-style ventilated hydraulic disc, twin piston |
| Tires / Front | AT21 x 7-10 |
| Tires / Rear | AT20 x 10-9 |
| L x W x H | 70.7 x 48.8 x 41.9 in |
| Seat Height | 31.9 in |
| Wheelbase | 50.0 in |
| Ground Clearance | 9.3 in |
| Fuel Capacity | 2.6 gal |
| Wet Weight* | 405 lb |

Color



Team Yamaha Blue/White



Black*

Shown with optional accessories. **Only the YFZ450R SE available in Black.



THE REIGNING 3-STRAIGHT AMA PRO MX CHAMPION.

Just how much better *is* the YFZ450R than the competition? Well, if 3-straight AMA Pro MX titles don't convince you, take a closer look. It features a high-tech, quick-revving, titanium 5-valve, 449cc fuel-injected engine; lightweight, pro-caliber cast aluminum/steel chassis; ergonomically engineered bodywork for optimal positioning; the industry's first A&S clutch on a sport ATV for far less fatigue; and so much more. Welcome to the top of the podium.

ACCESSORIES



Model shown with optional accessories.

GENUINE RACE TECHNOLOGY. GENUINE YAMAHA.

All Yamaha GYTR® accessories are engineered to the most exacting standards using race-inspired technology and superior materials and design.



View the full lineup of Yamaha accessories, apparel and Yamalube products at: YamahaPartsAndAccessories.com

GYTR HIGH-FLOW AIR FILTER

High-flow gauze filter offers superior engine protection and optimal airflow for more power. Plus, it's reusable. (Must use Billet Air Filter Adaptor Plate, sold separately)



REAR GRAB BAR

Special ball-burnished aluminum tube construction. Includes flag/whip mounting tab.



GYTR SLIP ON MUFFLERS BY FMF®

The PowerCore 4 and PowerCore 4 HEX are designed to increase the horsepower and torque throughout the entire power curve and give you a noticeable power increase. Stainless steel for maximum durability under the harshest conditions. Includes removable spark arrestor, and optional quiet insert is available separately. This accessory is restricted to closed-course use only. (PowerCore 4 HEX shown)





ALUMINUM A-ARM SKID PLATES

Help protect A-arms, steering and suspension components. Constructed of strong, lightweight aluminum alloy sheet metal.



GYTR MX FRONT GRAB BAR

“Bull Horn” design helps protect the shocks and radiator while offering a large handhold to maneuver the machine in mud. Constructed of strong, lightweight 6063 and 5052 aluminum alloy tubing and sheet metal with a durable finish.



GYTR NERF BAR, FOOTWELL, PEG COMBINATION

- Combines the nerf bars, footwells and foot pegs into one accessory!
 - 1.25”-diameter 6063 aluminum alloy tubing
 - Foot pegs are 2.5” wide and 0.75” longer than stock, with two height positions
 - Extruded joint clamp helps make installation and alignment a snap
 - 5° sweep for ultimate leverage, comfort and clearance
 - Durable 1.5”-wide nylon webbing in nerf bar and footwell areas
 - Meets all AMA® and ATVA® racing regulations
- For closed-course competition only.

APPAREL



YAMAHA RACING BUTTON-DOWN PIT SHIRT - Blue
60% cotton / 40% polyester, regular fit pit shirt. Features 100% polyester mesh panel and Yamaha Racing logo on front.



YAMAHA RACING PODIUM TEE - Gray
100% cotton, large novelty graphic and Yamaha Racing logo screen printed.



YAMAHA RACING LONG-SLEEVE TEE - Blue
100% cotton with screen printed Yamaha Racing, Yamalube and GYTR logos.



YAMAHA RACING TIMELESS HOODED SWEATSHIRT
- Blue 80/20 cotton/poly blend, contrasting drawstrings, Yamaha Racing and Tuning Fork screened logos on the front of the sweatshirt.



YAMAHA RACING BACKPACK BY OGIO® - Features a side-entry padded laptop pocket, large center storage, and power cord and mouse storage; weatherproof fleece-lined digital media/audio pockets with headphone exit port, adjustable sternum strap and deluxe organization panel. Yamaha Racing logo on front.




YAMAHA FACTORY RACING WATCH BY TW STEEL - Officially licensed Yamaha Factory Racing watches by TW Steel with a carbon fiber case, available in blue, black and white wristbands. 10 ATM water resistant.



Shown with optional accessories

 YamahaOutdoors.com

 [Yamaha Genuine Parts & Accessories](#)

 [Find A Dealer](#)

 [Have A Dealer Contact Me](#)




@YamahaMotorUSA @YamahaOutdoors



 YamahaMotorsports.com

 [Yamaha Genuine Parts & Accessories](#)

 [Find A Dealer](#)

 [Have A Dealer Contact Me](#)



@YamahaMotorUSA



©2014 Yamaha Motor Corporation, U.S.A.,
6555 Katella Avenue, Cypress, CA 90630

Whether it's ATVs, motorcycles, snowmobiles, outboard motors, watercraft or generators, one fact remains the same: Yamaha continues to be the leader in offering the world's most complete—and most diverse—lineup of motorsports products. At Yamaha, we've been building the industry's finest-engineered ATVs for almost 30 years. And now, as always, with forward thinking our number one priority, we're still striving to bring you the most innovative and best-performing machines in the world. Because we know there's only one place Yamaha owners want to be. Out front, leading the pack.

ATVs are recommended for use only by riders 16 years and older. YFZ450R and Raptor 700R recommended for experienced riders only • Yamaha recommends that all ATV riders take an approved training course. For safety and training information, see your dealer or call the ATV Safety Institute at 1-800-887-2887. ATVs can be hazardous to operate. For your safety: Always avoid paved surfaces. Never ride on public roads. Always wear a helmet, eye protection and protective clothing. Never carry passengers. Never engage in stunt riding. Riding and alcohol/drugs don't mix. Avoid excessive speed. And be particularly careful on difficult terrain. Read the owner's manual and the product warning labels before operation. There are few joys in life equal to the free-spirited thrill and experience of ATV riding. And that's why it's important for all of us to do our part as responsible riders. By following logical, commonsense rules, we can maintain season after season of unparalleled enjoyment of our sport. • Please remember to "Tread Lightly." Always ride in a responsible manner, respecting the environment as well as all state and local laws. The riders in this brochure are professionals; don't attempt to emulate them. Specifications subject to change without notice. Some models shown with optional accessories. *Wet weight includes the vehicle with all standard equipment and all fluids, including oil, coolant (as applicable) and a full tank of fuel. It does not include the weight of options or accessories. Wet weight is useful in making real-world comparisons with other models. All ATVs & SxSs come with a six-month Limited Factory Warranty. See your dealer for details. Printed on recycled paper in the U.S.A.

YAMAHA GENUINE PARTS AND ACCESSORIES

Check out the complete line of Yamaha Genuine Accessories and Apparel at YamahaPartsAndAccessories.com



Y.E.S. provides complete peace of mind, with nationwide coverage at any Yamaha Dealer that protects you from expensive repair bills by extending your warranty. Plus, there's no deductible, and Y.E.S. is fully transferable. For more information and a rate quote, see your dealer or visit yamahamotorsports.com

IN THE FIELD • Yamaha is proud to be associated with Ducks Unlimited®, Buckmasters®, Safari Club International and other conservation-based organizations that share our belief that education, careful stewardship and conscientious use of the earth's resources are the future for all outdoor enthusiasts. When it comes to sustainable enjoyment of the outdoor pursuits we all have in common, it's imperative that we work together toward our common goal of leaving the world a better place for our children to enjoy.