

# AUCTION

**FACILITY CLOSING - ONLINE TIMED EVENT - WORLD CLASS**

**ROMEO MACHINE SHOP & MANUFACTURING, LTD.**

**LOCATION: 1577 HOWARD AVENUE WINDSOR ONTARIO N9A6M6**

**OVER 90 YEARS IN BUSINESS  
COMPLETE PLANT CLOSURE**

- Machine Repair
- Machine Rebuilding
- Steel Fabrication
- Ship Repair
- Large Press Repair
- Large Machine
- Boring Mills
- Large Lathes
- Rolls
- VTL
- Gears
- Tool Room
- Welding
- Full Shop Support

Pre-Auction Offers Invited for Major Assets

## ONLINE AUCTION

**LOTS OPEN**

**Oct. 15<sup>TH</sup> - 9 AM (EDT)**

**LOTS BEGIN TO CLOSE**

**OCT 27<sup>TH</sup> - 9 AM (EDT)**

**INSPECTION DATES**

**Oct. 19-23 – 9am to 4pm each day (EDT) or  
Call AMG for special appointments.**



6" G & L Floor Type Boring Mill Model 70-HS-UF



56" x 23' Stanko Heavy Duty Lathe

**Ph: +001-313-499-6490 • Fx: +001-313-839-9600**



**Asset Management Group**

20501 Hoover St. • Detroit, MI 48205

amgrouponline.com • Chip@AMGrouponline.com



**LOTS OPEN FOR BIDDING: OCT. 15<sup>TH</sup> - 9 AM (EDT)**

**LOTS BEGIN TO CLOSE: OCT. 27<sup>TH</sup> - 9 AM (EDT)**

**REGISTRATION & WEBCAST BIDDING AT: [BIDSPOTTER.COM](http://BIDSPOTTER.COM)**



28" x 108" CNC Stanko Lathe



28" x 132" Bertram No 4 Lathe



28" x 108" Stanko Model 1M63 Lathe

### TOOL ROOM MILLS

- Stanko model 6R82SH universal mill 12" x 52" table Accu-Rite 2 axis Mill Mate DRO
- Supermax J-head vert mill model YMC 1½ vs. 9" x 42" table
- Darberts vert mill 12" x 54" table 5.5 HP, Accu-Rite Mill Mate 2-axis DRO

### LATHES

- 12" x 24" cc standard modern lathe
- 12" x 24" cc TOS lathe
- 24" x 84" cc Bertram lathe
- 28" x 132" cc Bertram no. 4 lathe
- 28" x 108" Stanko #1M63 CNC lathe with Stemens Sinumerik 802C controller
- 28" x 108" Stanko #1M63 lathe
- 56" x 276" Stanko heavy duty lathe, auto compound feed, hyd tail stock, many lots of tooling, grinding polishing attachment, boring bars, chucks, steadies, 100 hp

### GEARS

- Sunderland gear planer no. 19 56" gear diam. 9" face with, 11/2 DP full tooling
- Maxicut No. 3 gear shaper 24" diam, 18" internal, 4 DP, 64, 3 module tooling change gears

### BORING MILLS

- 6" model 70-HS-UF Floor type horizontal boring mill, 5/N 425-29-ST 134"YX, 36"X, 48"Z, 100,000 lb CAP, 108" x 108" rotary table pendant

controls, CAT #50 40' x 6'7" bed plates x 16" thick *rotary to be sold separate*

- 6" Collet & Engel hard HBM, #VFT-150 84"Y, 114"X, 100"Z, 78" x 88" rotary table Heid Enhann 2 axis PRO
- 5" Stanko model 2h636 ROL, HBM, CAT #50 54"X, 54"Y, 62"X, 71" T-Slot rotary, DRO 2 axis outboard support
- Kwickway cylinder line boring machine
- Stanko model 1525 vertical double column turning and boring mill, 98" diam. chuck, 78" vert. height of workpiece, turret tool head, crossrail, faceplate

### TOOLING THROUGHOUT PLANT

- Large quantities of boring tooling, Lathe tooling, rigging, inspection, support tooling, angle plates, welding support, ship repair support, Granite plates, precision plates, gages, electrical, rigging box's, shop presses, office furniture, milling vises, v block, hardware, mobile support, shop cleaning supplies, much more



Davi Pyramid Power Roll

## #1 IN PLANT LIQUIDATIONS APPRAISALS

Another auction brought to you from:



# Asset Management Group

LET US KNOW WHAT YOU HAVE FOR SALE





5' Stanko HBM with Rotary Table



Aronson #HS2 30,000 lb Cap Traveling Head, Rotating Weld Station



400 x 12' Allsteel Hydraulic Press Brake

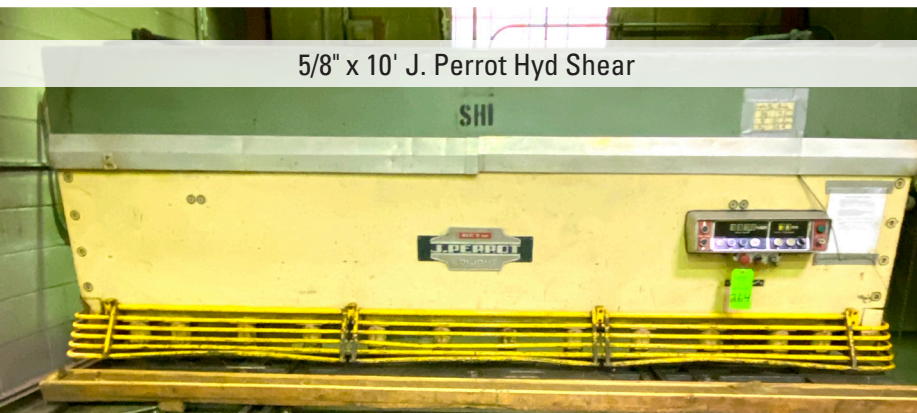


Diesel CAT Generator Portable

### WELDING

Aronson Traveling head weld station with tail stock 40' travel, Lincoln electric arc welder was used for building up shafts, the rods can go up to 40' long

- Miller Delta weld 452-CVDC power source
- Ideal arc TM 6100/4000 AC/DC welder
- Miller 330 ABP arc welder
- Many Cabinets of welding supplies
- Plymo welding dust collector arms



5/8" x 10' J. Perrot Hyd Shear

### MOBILE STOCK

- 15 ton Pettinbone rough terrain model 30 mobile crane
- Ford F Series Super Duty stake truck dual wheel
- Chevrolet 30 Diesel box cargo, dual wheel truck
- Chevrolet 2500 Cheyenne pick-up truck 2 WD
- Ford F-250 pick-up truck with Curits Hyd plow
- Clark c-300-50 LPG fork truck



Maxicut No 3-A Gear Shaper



Portable Shipping Containers

Pre-Auction Offers Invited for Major Assets

**QUESTIONS PLEASE CALL:**  
**+001-313-499-6490**



Kitchen & Walker Radial Arm Drill (1978)



# ONLINE BIDDING AT: [WWW.BIDSPOTTER.COM](http://WWW.BIDSPOTTER.COM)

LOTS OPEN FOR BIDDING: OCT. 15<sup>TH</sup> - 9 AM (EDT)  
LOTS BEGIN TO CLOSE: OCT. 27<sup>TH</sup> - 9 AM (EDT)

Pre-Auction Offers Invited for Major Assets

Stanko Vertical Double Column Boring and Turning Mill, 98" Table, 78" Vert



Peddinghouse 210/13 Iron Worker

Sunderland No. 19 Gear Planer and Tooling



## FABRICATING

### BRAKE

- 400 ton Allsteel #400-12 hyd press brake

### SHEAR

- 5/8" x 10' J. Perrot hyd shear with back gage

### ROLLS PLATE BENDING

- Davi model IT-30-D 3 roll x 8' x 11/4" cap
- 10' 3 roll power bending roll
- 5' x 3' roll plate roll

### IRONWORKER

- Peddinghouse model 210/13 Iron Worker

### SAWS

- Thule horizontal band saw
- 16" Do-All v-16 vertical band saw
- Marvel model R-S vertical metal saw

### TOOL & CUTTER

- Cincinnati tool & cutter grinders

### SURFACE GRINDER

- 6" x 18" Chevalier #FSG-618 hand feed surface grinder

### CNC VERTICAL MACHINING CENTER

- Viper model V-950 P CNC VMC 8,000 RPM, 18" x 47" table, CAT #40, 20 ATC, (2004)



98" Stanko Vertical Turning & Boring Mill

## GLOBAL LIQUIDATION COMPANY



## Asset Management Group

20501 Hoover St. • Detroit, MI 48205

amgrouponline.com • Chip@AMGrouponline.com



## RADIAL ARM DRILLS

- Kitchen Walker model E-3 radial arm drill 4' positioning box table
- Cincinnati 3' arm radial arm drill with rotary table

## CYLINDER LINE BORING MACHINES

- Kwick way line boring unit
- Portable cylinder line boring unit

## GENERATORS

- Caterpillar model D343 6 cyl diesel generator AC/640KUA
- Caterpillar model #3306 diesel generator with enclosed shipping container for off-site use

## LAYOUT TABLE

- 16' x 3' x 10" thick heavy duty steel layout table

## INSPECTION

- Throughout plant many granite tables, precision blocks, tooling, gages

Pre-Auction Offers Invited for Major Assets



Stanko VBM 102" Swing, Large Vertical



Darberts Vertical J Head Milling



15 Ton Pettibone Rough Terrain Crane



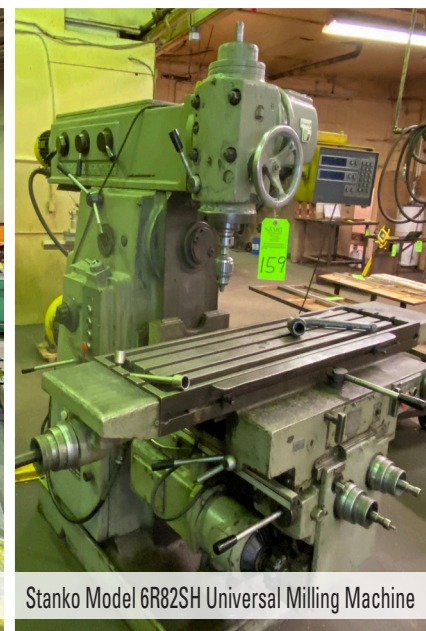
Large Heavy Duty Shop Press



Mitts & Merrill Hyd Keyseater with Tooling



6" Collet & Engelhardt VFT-150 HBM with Rotary



Stanko Model 6R82SH Universal Milling Machine



Ford Stake Utility Truck

## TERMS & CONDITIONS

- An 18% buyers premium will be charged.
- Sales tax rate rules and exemption information is provided.
- All items will be sold "AS IS WHERE IS" without any warranties expressed or implied.
- Auctioneer makes no warranty or guarantee of accuracy of information contained herein.
- Sold in US Dollar.
- No Cash Accepted Onsite.



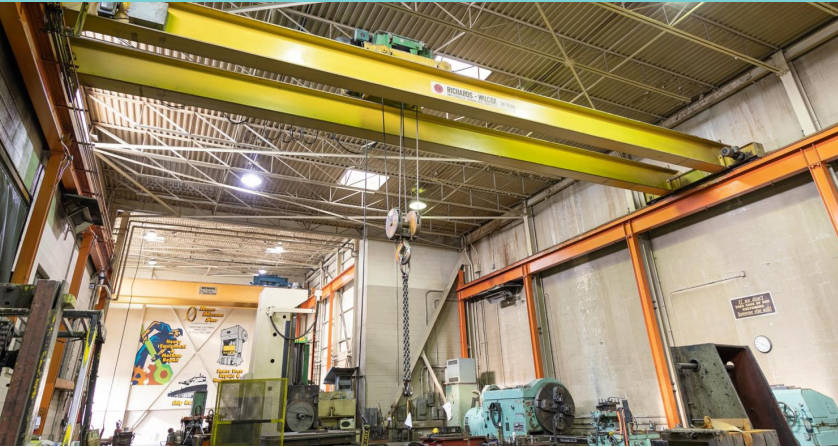


# Asset Management Group

amgrouponline.com • Chip@AMGrouponline.com

## INSPECTION DATES:

**OCT. 19-23 – 9am to 4pm each day (EDT) or call AMG for special appointments.**



20501 Hoover St.  
Detroit, MI 48205

**INDUSTRIAL BUILDING FOR SALE:** 33,700 Square ft. Crane capacity 5 tons up to 40 Ton capacity , clear bays with up to 44' ceiling heights. Can be divide into many spaces. If interested in the building please don't hesitate to call our office. A rare find in a Major city.

Pre-Auction Offers Invited for Major Assets

**LOTS OPEN FOR BIDDING: OCT. 15<sup>TH</sup> - 9 AM (EDT)**  
**LOTS BEGIN TO CLOSE: OCT. 27<sup>TH</sup> - 9 AM (EDT)**

### AUCTION TERMS & CONDITIONS

**REGISTRATION & BIDDING:** Everything will be sold to the highest bidders for cash, in accordance with the auctioneer's normal "Terms of Sale", which are available at the site or by request at 313-499-6490. A 18% Buyer's Premium will be added to the final bid price. All bids are in US dollars. An 18% Buyer's Premium will be added to online bids. Your bid is a contract: Place a bid only if you're serious about buying the item. If you are the high bidder, you will enter into a legally binding contract with AMG Auction.

**PAYMENT:** All successful Bidders agree to make full payment to AMG Auction at the conclusion of the sale. Only Bank Wire Transfer, Bank Check or Cashier's Check payable to AMG Auction will be accepted. If you are using a wire transfer your bank may wire the funds the day after the sale. All sales are subject to sales and/or local taxes unless a signed exemption form is presented at the time of the purchase. Payment will be made in US dollars only. No cash Accepted on site of sale.

**VERIFY DESCRIPTIONS:** Note: Although all information has been obtained from sources deemed reliable the auctioneer and seller make no warranty or guarantee, expressed or implied, as to the accuracy of the information contained in the auction brochure, lot catalog or sale web pages.

**Buyers agrees to accept purchased per standard auction terms, "AS IS, WHERE IS, WITH ALL FAULTS" WITHOUT ANY REPRESENTATION OR WARRANTY BY AMG AUCTION OR ANY OTHER PERSON. THERE ARE NO EXPRESSED OR IMPLIED REPRESENTATIONS OR WARRANTIES WITH RESPECT TO THE ASSETS INCLUDING, WITHOUT LIMITATION, ANY REPRESENTATION OR WARRANTY REGARDING THE MERCHANTABILITY OR FITNESS FOR ANY PARTICULAR PURPOSE.**

**REMOVAL & RIGGING:** Removal and Rigging is the responsibility of the buyer. Anyone, either a buyer or a rigger, who uses a powered vehicle to remove anything from the auction site, will be required to present a certificate of insurance. Removal may begin when the auction has completed and payment in full has been made.

**ISSUANCE OF TITLE:** Titles relative to titled assets purchased will be mailed to the purchaser's address on file after payment is received and cleared. All invoices must be paid in full at end of auction. Any merchandise not paid for at this time will be considered abandoned and may be resold by auctioneer, any loss incurred in the resale to be borne by the original buyer.

**OVERHEAD CRANES WILL BE AVAILABLE FOR A FEE TO QUALIFIED RIGGERS IN LOADING ITEMS.**