

Auction catalog

Title	Online Auction - April 9, 2019
Description	The following line of Fertilizer, Farm Implement, Truck, Trailer & Construction Equipment will be sold online with the bidding ending on April 9, 2019. Location of the equipment is given. Bidding within the last minute before the closing of a lot will extend the bidding time by an additional minute. Be prepared to bid accordingly. For more information, contact Del Peterson & Associates: 419 West Judy Drive Fremont NE, 68025 Phone: 800-492-9090 or 402-721-4388 Fax: 402-721-4583 E-mail: auction@delpeterson.com
Date	Tue, Apr 9, 2019
Starts at	10:00 AM
Address	PO Box 654, Fremont, NE 68026 USA
Categories	

#1 - Various Filters (PZ14973)

Various Filters (PZ14973), 4 - CNH 249987A1, 12 - Napa Gold 1607, 25 - Napa Gold 3472, 2 - Fleetguard AF 26114, 1 - CNH 87267368, 6 - Fleetguard WF 2074, 1 - CNH Bn319388, 5 - CNH Bn306031, 1 - CNH 87356193, 1 - CNH 87409371. Notes:



#2 - Meter/Motor/Pump (PZ1508)

Meter/Motor/Pump (PZ1508), Veeder Root meter, Baldor 3 hp electric motor, pump. Notes:



#3 - Motor/Pump (PZ1509)

Motor/Pump (PZ1509), New MagneTek 5 hp electric motor, Monarch model BSEF-500-3 pump. Notes:



#4 - Motor/Pump (PZ1510)

Motor/Pump (PZ1510), Baldor 3 hp electric motor, MP pump. Notes:



#5 - Meters (PZ1511)

Meters (PZ1511), 4 - Veeder Root meters. Notes:



#6 - Motor/Pump (PZ1512)

Motor/Pump (PZ1512), MagneTek 5 hp electric motor, pump, electric cord. Notes:



#7 - Motor/Pump (PZ1513)

Motor/Pump (PZ1513), Baldor 5 hp electric motor, Scot pump, electric cord. Notes:



#8 - Motor/Pump (PZ1514)

Motor/Pump (PZ1514), Baldor 5 hp electric motor, pump, electric cord. Notes:



#9 - Motor/Pump (PZ1515)

Motor/Pump (PZ1515), Baldor 5 hp electric motor, pump, electric cord. Notes:



#10 - Motor/Pump (PZ1516)

Motor/Pump (PZ1516), Baldor 3 hp electric motor, pump, electric cord. Notes:



#11 - Raven Coolers (PZ1478)

Raven Coolers (PZ1478), 2 - Raven Super coolers. Notes:



#12 - Manifold System (PZ1479)

Manifold System (PZ1479), Manifold system, stainless steel, with BI-Toro. Notes:



#13 - Liquid Storage Tank (PZ1474)

Liquid Storage Tank (PZ1474), Approx. 15,000 gallon steel vertical liquid storage tank. Notes:



#14 - Liquid Storage Tank (PZ1475)

Liquid Storage Tank (PZ1475), 2500 gallon stainless steel vertical liquid storage tank, valve, stainless steel legs. Notes:



#15 - Liquid Storage Tank (PZ1476)

Liquid Storage Tank (PZ1476), 2500 gallon stainless steel vertical liquid storage tank, valve, steel legs. Notes:



#16 - Liquid Storage Tank (PZ1477)

Liquid Storage Tank (PZ1477), 2500 gallon stainless steel vertical liquid storage tank, valve, stainless steel legs. Notes:



#17 - Lexion C508-30 Corn Head (KMK796)

Lexion C508-30 Corn Head (KMK796), Lexion, model C508, 8 row, 30", non chopping corn head, hydraulic deck plates, some new deck plates, new gathering chain, some new sprockets, used last season. Notes:



#18 - 1979 John Deere 544C (TH455)

1979 John Deere 544C (TH455), type 641411 05 engine, engine serial #: 5956331, hi/low/reverse transmission, 3 cubic yard bucket, Michelin XTLA radial 20.5R25, leaks hydraulic fluid, shows 9840 hours. Notes:



#19 - 1990 Fast Dump Trailer (TH456)

1990 Fast Dump Trailer (TH456), tri axle, tires lift axle: 295/75 R22.5 at 75% tread, tires tandems: 11R24.5 at 75% tread. Notes:



#20 - 2017 Timpte Super Hopper Grain Trailer (KMK821)

2017 Timpte Super Hopper Grain Trailer (KMK821), 43' long, 72" high side wall, 102" wide, split tub, tandem axle, spring ride suspension, steel sub-frame and coupler, full double knock rails all around tub, one (1) row of 3 LED lights, manual roll over tarp and 2 speed openers, eight (8) 22.5 aluminum wheels and tires, air plumbed to center. Notes:



#21 - 2011 John Deere 4930 Dry Machine (NP7745)

2011 John Deere 4930 Dry Machine (NP7745), John Deere diesel engine, hydrostatic transmission, heat, air conditioning, AM/Fm radio, New Leader L3220 G4 - 11 dry spreader box (S/N 131380), MultiApplier Ready, dual spinners, 480/80R50 tires, StarFire iTC globe, GS2 display, shows 3,535 hours. Notes:



#22 - Noble Harrow (DR1538)

Noble Harrow (DR1538), 7 section hydraulic folding harrow, NO CYLINDER. Notes:



#23 - Liquid Tank (DR1536)

Liquid Tank (DR1536), steel upright tank, approximately 16' tall, 8' diameter. Notes:



#24 - John Deere 726 (DR1537)

John Deere 726 John Deere 726 (DR1537), 38' mulch finisher, 7" spacing's, rear harrow, hydraulic fold, walking tandem axles. Notes:



#25 - 1978 Tech Steel (DR1535)

1978 Tech Steel (DR1535), 25 ton lowboy trailer, 24' well, rear beaver tail, fold down rear ramps, wood deck, tandem axle, 8.25R15 tires. Notes:



#26 - DMI Tool Bar (PZ1495)

DMI Tool Bar (PZ1495), DMI 3200 11 knife conversion tool bar, coulters, Dickey John coolers, hydraulic wings, rear hitch, 11L-15 flotation tires. Notes:



#27 - 1978 Tyler Dry Spreader (PZ1492)

1978 Tyler Dry Spreader (PZ1492), 1978 Tyler stainless steel dry spreader, twin spinner, tandem axle, PTO, 11L-15 flotation tires. Notes:



#28 - 1995 Ford L8000 Truck (PZ1491, Unit 790)

1995 Ford L8000 Truck (PZ1491, Unit 790), Cab & Chassis Only, Cummins diesel engine, 6 speed transmission, air conditioning, heat, Am/Fm radio, single axle, 11R22.5 tires, (Stainless steel liquid tank and pump are NOT included), shows 161,724 miles. Notes: Stainless steel liquid tank and pump are NOT included.



#29 - 2003 Freightliner FL70 Dry Tender Truck (PZ1490, Unit 764)

2003 Freightliner FL70 Dry Tender Truck (PZ1490, Unit 764), 3126 Cat diesel engine, 6 speed transmission, air conditioning, heat, Am/Fm cassette radio, cruise control, single axle, Tyler 10 ton dry tender box, rear discharge auger, all hydraulic, roll over tarp. Notes:



#30 - 2016 Timpte Super Hopper Trailer (KMK801)

2016 Timpte Super Hopper Trailer (KMK801), Timpte super hopper grain trailer, 42' x 72" x 102", aluminum composition, steel sub-frame and coupler, tandem axle, spring ride suspension, manual roll tarp and doors, front and rear ladders with viewing platforms, LED lights, eight (8) 22.5" aluminum wheels and tires. Notes: Trailer has had routine service. Very little corrosion on frame of trailer.



#31 - 2008 GMC 2500HD Pickup (PZ1489, Unit 793)

2008 GMC 2500HD Pickup (PZ1489, Unit 793), 4x4, gas engine, automatic transmission, air conditioning, heat, Am/Fm CD stereo, cruise control, (fuel tank in back of pickup is NOT included), LT265/75R16 tires, shows 193,950 miles. Notes: Fuel tank in box of pickup is NOT included.



#32 - 2003 Ford F250 Super Duty Pickup (PZ1493, Unit 573)

2003 Ford F250 Super Duty Pickup (PZ1493, Unit 573), 4x4, gas engine, automatic transmission, air conditioning, heat, Am/Fm CD stereo & cassette, 5th wheel ball, LT245/75R15 tires. Notes: Gauges, radio, windows do not work. Please contact seller for more information on pickup.



#33 - 1999 Freightliner FL70 Petroleum Truck (PZ1503, Unit 775)

1999 Freightliner FL70 Petroleum Truck (PZ1503, Unit 775), 3126 Cat diesel engine, 6 speed transmission, air conditioning, heat, Am/Fm CD stereo, cruise control, single axle, 1999 Youngs Tank 2800 gallon aluminum 4 compartment (800-700-700-600), petroleum tank, open dome, Scully system, 2 - LC meters, dual electric hose reels with hose, aluminum storage box, 11R22.5 tires, shows 298,259 miles. Notes: Chip in windshield.



#34 - 2013 Kenworth T440 Petroleum Truck (PZ1504, Unit 18)

2013 Kenworth T440 Petroleum Truck (PZ1504, Unit 18), Cummins diesel engine, Allison 3000RDS automatic transmission, air conditioning, heat, Am/Fm CD stereo, Digital TFT LCD monitor, cruise control, engine brake, tandem axle, full screw, air ride suspension, 2012 Brenner 4500 gallon 5 compartment (1500-1000-1000-500-500) aluminum petroleum tank (S/N C6913), 2 - LectroCount LCR-II meters/Liquid controls, Civacon Civacontrol air system, Civacon model 3202 retain/overflow monitor, dual electric hose reels with hose, 315/80R22.5 front tires, aluminum rims, 11R22.5 rear tires, aluminum rims, shows 214,667 miles, 11,736 hours. Notes:



#35 - 2003 IHC 8100 Van Truck (PZ1494, Unit 816)

2003 IHC 8100 Van Truck (PZ1494, Unit 816), Cat diesel engine, 10 speed transmission, air conditioning, heat, Am/Fm cassette radio, cruise control, tandem axle, full screw, air ride suspension, 2001 Morgan model GVSD09726096 van body (S/N MPA01VB55002003), crack in front top of van body, rear cargo doors, electric rear lift gate, 315/80R22.5 front tires, 11R22.5 rear tires, shows 257,120 miles. Notes: Truck has been sitting for 2 years, weak batteries. Please call seller for more information.



#36 - 2007 GMC 2500HD Pickup (PZ1496, Unit 440)

2007 GMC 2500HD Pickup (PZ1496, Unit 440), 4x4, gas engine, automatic transmission, air conditioning, heat, Am/Fm radio, cruise control, running boards, 5th wheel ball, LT245/75R16 tires, shows 138,648 mile. Notes:



#37 - 2000 Melroe 4440 Spra-Coupe Sprayer (PZ1310)

2000 Melroe 4440 Spra-Coupe Sprayer (PZ1310), Perkins diesel engine, automatic transmission, air conditioning, heat, Am/Fm radio, 420 gallon poly liquid system, 60' boom, electric over hydraulic raise and folding, Raven controller, lightbar, shows 3054 hours. Notes:



#39 - 2003 Raven Dump Trailer (TH457)

2003 Raven Dump Trailer (TH457), tri axle, manual roll tarp, Superslide liner, 80,000 lb. capacity. Notes:



#40 - 2001 Kenworth T800 (TH459)

2001 Kenworth T800 (TH459), CAT C12 engine, Eaton Fuller 10 speed transmission, front tires: 385/65 R22.5 at 50% tread, rear tires: 11R24.5 at 75% tread, lift axle: 385/65 R22.5 at 50% tread, TransTech A120-3796 4 compartment tank, tank 1: 2500 gal capacity, tank 2: 1000 gal capacity, tank 3: 750 gal capacity, tank 4: 750 gal capacity, Lectro Count LCR-11 Meter Model # M-15-1 on Diesel Side, Lectro Count LCR-11 Meter Model # M-7-1 on Gas Side, shows 775967 miles. Notes: Engine runs rough/not currently drivable. NON RUNNER.



#41 - 2016 Timpte Super Hopper Grain Trailer (KMK819)

2016 Timpte Super Hopper Grain Trailer (KMK819), 42' long, 78" high side wall, 96" wide, aluminum subframe, split tub, TP axles, air ride suspension, double full knock rails around tub, eight (8) removable vibrator brackets, two (2) rows of 5 LED lights, roll over tarp, enclosed tarp caps, front and rear aluminum enclosures, PSI tire inflation system, four (4) 22.5 aluminum super single wheels. Notes: Trailer is clean and straight. Comes from a large fleet that is well maintained.



#42 - 2012 RoGator 1100 Sprayer (PZ1518)

2012 RoGator 1100 Sprayer (PZ1518), diesel engine, hydrostatic transmission, air conditioning, heat, Am/Fm CD stereo, leather seats, 1100 gallon stainless steel liquid system, 100' boom, foam marker, top poly rinse tank, Michelin 80% rubber, fenders, Viper Pro monitor, auto steer, lightbar, approx. 2633 hours. Notes:



#43 - 1960 Mosher Steel (DR1650)

1960 Mosher Steel (DR1650), 45,000 gallon pressure vessel, 250 PSI, data tag, SN 90337, Natl. Bd # 771, tank is approximately 86' long & 11.5' diameter, manway, sitting on steel saddles, full 55 page U-1 data report form November 2018 is available upon request. Notes: This tank needs removed by July 1, 2019. Removal and transportation nad crane are the sole responsibility of the buyer. There is a crane available on site, for bid or crane information contact Bruce 575-302-0512.



#45 - Gustafson Seed Treater (KMK802)

Gustafson Seed Treater (KMK802), Gustafson model HCBT-800 seed treater, 6' drum, 800 bu./hr. capacity on soybeans, 450 bu./hr. on wheat and other cereals, 400 bu./hr. on cotton, control panel, CHCBT controls, Baldor 2 hp. Motor, 180 volts, 9.6 amps., single phase system, portable, comes with 2 treatment tanks. Notes: Does not have seed wheel.



#46 - 1000 Gallon Liquid Tank Trailer (LD121)

1000 Gallon Liquid Tank Trailer (LD121), 1000 gallon poly tank, 2-inch valve outlet, tandem axle, fertilizer cart frame, pin hitch, single jack stand, 11L 15 tires. Notes: No title for trailer



#47 - 2004 CaseIH FLX4010 Dry Floater (DR1551, Unit 90337)

2004 CaseIH FLX4010 Dry Floater (DR1551, Unit 90337), diesel engine, Allison automatic transmission, air conditioning, heat, Am/Fm cassette radio, New Leader L3220 G4 stainless steel dry spreader box, MultiApplier ready, twin spinner, all hydraulic, Good Year 54x31.00R26 front tires, Good Year 1000/50R25 rear tires, Raven monitor, shows 5478 hours. Notes: Crack in windshield.



#48 - 2000 International 4900 (TH460)

2000 International 4900 (TH460), Detroit 466E engine, Eaton Fuller 6 speed transmission, front tire: 295/75 R22.5 at 75% tread, rear tire: 275/80 R22.5 at 75% tread, shows 207,300 miles. Notes: Noise in the rear axle.



#49 - Wilmar 6 Ton Fertilizer Cart (PD1323)

Wilmar 6 Ton Fertilizer Cart (PD1323), web and drive system are not on it but included in the sale. Notes:



#50 - 2011 Wylie Mfg. WPT-90 Sprayer (PD1332)

2011 Wylie Mfg. WPT-90 Sprayer (PD1332), 1200 gallon tank, 90 foot boom, used over less than 1000 acres. Notes:



#51 - 1980 Chevy C70 (DR1612)

1980 Chevy C70 (DR1612), 427 V-8 gas engine, 5 speed transmission, 2 speed rear end, Newton Crouch hydraulic dual spinner box, web chain, ground drive, 42X25.00-20 flotation tires. Notes: Very nice shed kept truck. Bed was purchased NEW and installed on truck. This is part of the Griffith dispersal. Truck has NO TITLE.



#52 - DMI 4300 (DR1604)

DMI 4300 (DR1604), 17 knife 42.5' pull type tool bar, Capstan Ag Systems controller, variable rate capable, rear hitch, outside folding rows for transport. Notes: Very nice shed kept tool bar. This is part of the Griffith dispersal.



#53 - John Deere Cultivator (DR1610)

John Deere Cultivator (DR1610), model 85, 12 row 30", 3 point mount, hydraulic fold, roller shields are included. Notes: This is part of the Griffith dispersal. Purchased NEW one owner, always shedded field ready.



#54 - 2015 Wilson Commander Grain Trailer (KMK824)

2015 Wilson Commander Grain Trailer (KMK824), 43' long, 72" tall sides, 102" wide, Commander, split tub, air ride suspension, steel sub frame and coupler, one (1) row of 5 lights, ShurCo electric tarp, manual doors, four (4) aluminum wheels and four (4) steel wheels, 24.5". Notes:



#55 - Anco Chisel (DR1614)

Anco Chisel (DR1614), 15 shank 3 point mount chisel plow. Notes: This is part of the Griffith dispersal. Plow is straight and useable.



#56 - John Deere 400 Hoe (DR1615)

John Deere 400 Hoe (DR1615), model 400 rotary hoe, 6 row 16' wide, 3 point mount. Notes: This is part of the Griffith dispersal. Purchased NEW, shed kept.



#57 - 2009 John Deere 4930 Sprayer (NJP1403)

2009 John Deere 4930 Sprayer (NJP1403), John Deere diesel engine, hydrostatic transmission, air conditioning, heat, Am/Fm CD stereo, 1200 gallon stainless steel liquid system, 120' boom, foam marker, poly foam marker tank, Michelin 710/70R42 flotation tires, fenders, StarFire iTC globe, John Deere monitor, shows 4664 hours. Notes:



#58 - 2013 Morgan Van Body (ED916)

2013 Morgan Van Body (ED916), van body is 16' X 96" in size, came off a 2014 truck, it has a Tommy Lift that functions perfectly, it has a roll up rear door that works great and a curbside door that has fold down steps to it, the van body is straight and in great shape, floor is solid and doesn't show abuse, unit is in good shape, no title. Notes: Seller can load for the buyer.



#59 - 1995 2654 International 2654 (TH461)

1995 2654 International 2654 (TH461), Allison 5 speed automatic transmission, front tires: 11R22.5 at 90% tread, rear tires: 11R22.5 at 50% tread, 21' plow with 9' wing with electric over hydraulic controls, 10'x8'x2' dump box, shows 179,235 miles. Notes: Recently serviced.



#60 - 1960 Master Tank & Welding (DR1651)

1960 Master Tank & Welding (DR1651), 60,000 gallon pressure vessel, 250 PSI, tank is approximately 83' long & 10.5' diameter, manway, sitting on steel saddles, data tag, SN 68872, full 55 page U-1 data report form November 2018 is available upon request. , sitting on steel saddles, full 55 page U-1 data report form November 2018 is available upon request. Notes: This tank needs removed by July 1, 2019. Removal and transportation nad crane are the sole responsibility of the buyer. There is a crane available on site, for bid or crane information contact Bruce 575-302-0512.



#61 - 2004 Ford F-550 (TH458)

2004 Ford F-550 (TH458), Powerstroke 6.0L engine, 5 speed automatic transmission, 4WD, front tires: Kelly Armorsteel 225/70 R19.5 at 80%, rear tires: Kelly Armorsteel 225/70 R19.5 at 50%, 11'x7.5' flatbed in rough shape, Curtis Sno Pro 3000 7.5' plow, shows 215,000 miles. Notes:



#62 - Clark Tool Bar (KMK803)

Clark Tool Bar (KMK803), 32.5', 13 knife pull type tool bar, manual gauge wheels, hydraulic wings, Yetter ripple coulters, Continental flow meter. Notes: Very little use on coulters.



#63 - 2007 Case IH 2588 Combine (PD1325)

2007 Case IH 2588 Combine (PD1325), yield monitor, AFX rotor, straw chopper, Field tracker, 2 speed hydro, rotor transition cones, adj chaffer sieves, other add-ons, 4600 engine hours, 3500 separator hours, great condition, combine received full maintenance every winter. Notes: Mainly cut native grass and sorghum.



#64 - 1999 International 4700 2500 Gallon Fuel Truck (PD1324)

1999 International 4700 2500 Gallon Fuel Truck (PD1324), 5 compartment steel fuel tank, 2 state Certified Neptune meters, International 7.3L direct injection turbo charged engine, Eaton 6 speed transmission, transmission and clutch both replaced approximately 10,000 miles ago, 164,365 miles. Notes:



#65 - Phoenix Harrow (DR1624)

Phoenix Harrow (DR1624), model H17, approximately 50' swath, hydraulic lift, this lot also includes another harrow for parts and is also pictured. Notes: Hydraulic lines on tongue were replaced in 2018 with steel lines. This is part of the Griffith dispersal.



#66 - Clark Forklift (DR1608)

Clark Forklift (DR1608), LP gas engine, (NO Tank), 2 stage mast, 5000 lb capacity, 5' forks, pneumatic tires. Notes: This is part of the Griffith dispersal. Used daily very strong dependable lift. LP IS NOT INCLUDED.



#67 - Cat Forklift (DR0609)

Cat Forklift (DR0609), gas engine, manual transmission, 2 stage mast, 4500 lb capacity, hydraulic side shift, 48" forks, cab w/doors, shows 1047 hours. Notes: This is part of the Griffith dispersal. Lift runs and works well. Has recent engine work, NEW timing chain & gear, and rebuilt head. Front glass is cracked.



#68 - Massey Forklift (DR1626)

Massey Forklift (DR1626), model 728-4-D, diesel engine, tilt mast, approximately 25' lift, extra counter balance weight, 16.9-24 front tires. Notes: This is part of the Griffith dispersal.



#69 - 2013 RoGator 1300 Combo Sprayer (PZ1529)

2013 RoGator 1300 Combo Sprayer (PZ1529), Sisu diesel engine, hydrostatic transmission, air conditioning, heat, Am/Fm radio, 1300 gallon stainless steel liquid system (S/N AGCALQ13TDNS01048), 120' boom, top poly rinse tank, with New Leader L4330 G4 dry spreader box (542696D1), twin spinner, all hydraulic with stainless steel insert, electric roll over tarp, front fill, Mitas AC65 710/70R38 flotation tires & rims with Michelin SprayBib VF380/90R46 row crop tires & rims, fenders, Raven Viper Pro monitor, lightbar, shows 3644 hours. Notes:



#70 - 1960 Flint Steel (DR1654)

1960 Flint Steel (DR1654), 62,900 gallon pressure vessel, 250 PSI, tank is approximately 84' long & 11' diameter, manway, sitting on steel saddles, data tag, SN 50996, Natl. Bd # 50996, full 55 page U-1A data report form November 2018 is available upon request. Notes: This tank needs removed by July 1, 2019. Removal and transportation and crane are the sole responsibility of the buyer. There is a crane available on site, for bid or crane information contact Bruce 575-302-0512.



#71 - Grain Auger (DR1606)

Grain Auger (DR1606), 48' X 8" portable grain auger, NEW tube, NEW flighting, NEW 10hp 3 phase electric drive motor, NEW hopper box. Notes: Auger was completely rebuilt summer of 2018 has moved approximately 10,000 bushel since rebuild. This is part of the Griffith dispersal.



#72 - Hutchinson Auger (DR1607)

Hutchinson Auger (DR1607), 105' X 10" portable grain auger, 540 PTO drive, dual auger hydraulic swing hopper 42" wide, hydraulic up/down. Notes: This is part of the Griffith dispersal.



#73 - John Deere 568 Baler (DR1611)

John Deere 568 Baler (DR1611), Mega Wide Plus model, bale indicator, set up for net wrap, makes 5X6 bales, has only baled straw, monitor iis included, 31X13.50X15 tires. Notes: This is part of the Griffith dispersal. Super clean one owner, bought NEW, always shedded.



#74 - 2015 Kinze 3600 (DR1603)

2015 Kinze 3600 (DR1603), 16/31 no till planter, ground drive, dual closing wheels, 1 is rubber and 1 is spiked, Precision planting corn meters REBUILT W/O acres, row shutoffs on outside 8 rows, 3000 total acres on planter, shed kept. Notes: Very nice planter that is field ready. This is part of the Griffith dispersal.



#75 - Row Crop Tires (NJP1404)

Row Crop Tires (NJP1404), 4 - Firestone 380/105R50 row crop tires & rims. Notes:



#76 - 2012 John Deere 4940 Sprayer (PZ1505, Unit 29669)

2012 John Deere 4940 Sprayer (PZ1505, Unit 29669), John Deere diesel engine (S/N RG6090R007538), air conditioning, heat, Am/Fm CD stereo, 1200 gallon stainless steel liquid system, 120' boom, front fill (Vogelsang fill command NOT working), Firestone Radial 9100 380/105R50 tires, fenders, StarFire 3000 globe, Beacon light, John Deere monitor, shows 5120 hours. Notes:



#77 - 2015 Wilson Commander Grain Trailer (KMK822)

2015 Wilson Commander Grain Trailer (KMK822), 42' long, 66" tall sides, 96" wide, Commander slant series, tri axle, ag tub, 45 degree slopes, air ride suspension, aluminum sub frame, aluminum coupler, one (1) row of 5 lights, front and rear platforms with ladders, ShurCo 4500 Smart 2 Power tarp and electric doors, 3 mud flaps across front dolly legs and 3 mud flaps in front of aluminum sub frame, disk brakes, aluminum super single wheels. Notes: Clean, great condition light weight trailer.



#78 - 2004 Miller Nitro 2275HT Sprayer (NP8137)

2004 Miller Nitro 2275HT Sprayer (NP8137), diesel engine, hydrostatic transmission, heat, air conditioning, Am/Fm radio, 1,400 gallon stainless steel liquid system, 90' boom, foam marker, 380/90R46 tires, on-board spray wand, Ag Leader Integra Display, Ag Leader Direct Command, Ag Leader OnTrac2 Steering Kit, Norac UC5, shows 2,780 hours. Notes: Contact seller for a freight quote, freight fee will be between buyer and seller, not DPA Auctions.



#79 - 2007 Case IH 2588 Combine (PD1323)

2007 Case IH 2588 Combine (PD1323), Yield monitor, AFX rotor, straw chopper, Field tracker, 2 speed hydro, rotor transition cones, adj chaffer sieves, other add-ons, 5300 engine hours, 4000 separator hours, great condition, combine received full maintenance every winter. Notes: Mainly cut native grass and sorghum.



#80 - 1980 John Deere 2800 Plow (DR1621)

1980 John Deere 2800 Plow (DR1621), 7 bottom breaking plow, hydraulic adjustable coulters from 18"-24". Notes: Very nice one owner shed kept plow. This is part of the Griffith dispersal.



#81 - 1980 John Deere 2800 Plow (DR1622)

1980 John Deere 2800 Plow (DR1622), 7 bottom breaking plow, hydraulic adjustable coulters from 18"-24". Notes: Very nice one owner shed kept plow. This is part of the Griffith dispersal.



#82 - 1985 Ravens (DR1618)

1985 Ravens (DR1618), 30' hydraulic end dump, full aluminum frame, single line wet kit, rear grain door, good manual tarp, 24.5 tires, outside aluminum wheels. Notes: This is part of the Griffith dispersal. Farmer owned end dump. Always shedded when not in use. Owner believes never turned over.



#83 - 1980 City (DR1619)

1980 City (DR1619), 28' hydraulic end dump, full steel frame, floor liner, single line wet kit, rear grain door, good manual tarp, 24.5 low pro tires. Notes: This is part of the Griffith dispersal. Farmer owned end dump. Always shedded when not in use. Owner believes never turned over. Good tires & brakes.



#84 - 1988 Phelan Lowboy (DR1620)

1988 Phelan Lowboy (DR1620), model WT25K, 46' X 108", rated 45,000 lbs, hydraulic rear ramps, wood deck w/corrugated steel center, (all replaced in 2018), removable deck plate for brake inspection, manual outriggers, 5' headache rack, 8.25X16.5 tires. Notes: This is part of the Griffith dispersal. Trailer is pulled less than 2000/year. All flooring redone in 2018, axle bushings and grease zircs done in 2017. Shed kept when not in use. Super clean trailer ready to go, as clean as you can find.



#85 - Flatbed Boom (DR1613)

Flatbed Boom (DR1613), Stinger hydraulic boom, 3 section extendable boom, 4-hydraulic outriggers, McKissick 409 double sheave snatch block. Notes: The truck chassis DOES NOT SELL with this lot, it is the FLATBED/BOOM ONLY. The truck chassis can be purchased separately from the seller after the auction. The price and money to be determined between the buyer and seller, NOT DPA Auctions. This truck is part of the Griffin dispersal.



#86 - 1994 Ford F250 (DR1625)

1994 Ford F250 (DR1625), 390 gas engine, 4 speed transmission, 9.5' steel flatbed, gooseneck ball, AM/FM radio, air conditioning, 7.50/R16 tires. Notes: This is part of the Griffith dispersal. Very clean inside and out.



#87 - 1993 Chevy 2500 (DR1627)

1993 Chevy 2500 (DR1627), 6.5 liter diesel engine, automatic transmission, quad cab, 4X4, fiberglass topper, power windows & locks, tilt wheel, cruise control, bucket seats, rear receiver hitch, 245/75R16 tires, shows 176,677 miles. Notes: This is part of the Griffith dispersal.



#88 - 1952 Beard (DR1652, Tank #7)

1952 Beard (DR1652, Tank #7), 43,500 gallon pressure vessel, 225 PSI, sitting on steel saddles, data tag, SN W3691-3, approximately 10' diameter, and 77.5' long, NEW paint. Notes: This tank needs removed by July 1, 2019. Removal and transportation and crane are the sole responsibility of the buyer. There is a crane available on site, for bid or crane information contact Bruce 575-302-0512.



#89 - 2011 Timpte Super Hopper Grain Trailer (KMK823)

2011 Timpte Super Hopper Grain Trailer (KMK823), 48' long, 72" high side wall, 96" wide, tri axle with lift axle, continuous tub, air ride suspension, steel sub frame and coupler, two (2) rows of 9 LED lights, thirteen (13) lights on rear header, manual tarp and traps, four (4) trap doors, stir-up step and fold down ladder, stainless nose and rear, full sized rear doors, ten (10) 24.5" aluminum wheels. Notes: Trailer is clean and straight. Subframe has been plated.



#90 - 2006 John Deere 4720 Sprayer (PZ1536)

2006 John Deere 4720 Sprayer (PZ1536), John Deere diesel engine, hydrostatic transmission, air conditioning, heat, Am/Fm cassette radio, 800 gallon stainless steel liquid system, 90' boom, 20" spacing, On board air system with foam marker, fence row nozzles, high flow boom plumbing, chemical injection system, 3" fill, side and front fill, stainless steel chemical inductor, front rock box, New product pump, Radar speed sensors, guidance ready, Firestone Radial 9000 380/90R46 tires, Brown box display, Trimble lightbar, shows 1401 hours. Notes: Always shedded, Farmer owned machine - purchased New, Owner driven Only, sprayed water products only. This is part of Ruter Farms retirement auction.



#91 - Hitch Dock Travis Seed Cart (PZ1537)

Hitch Dock Travis Seed Cart (PZ1537), Hitch Dock Travis model SC2000 seed cart, 2 box, hydraulic fold, remote control, Honda GX240 electric start gas engine, 2-5/16 ball, tandem axle, 7.00-15LT tires. Notes: Always Shedded, No Title. This is part of Ruter Farms retirement auction.



#92 - 1995 Fruehauf Van Body Chemical Trailer (PZ1540)

1995 Fruehauf Van Body Chemical Trailer (PZ1540), 1995 Fruehauf model FBHLP-9 1.5-NT2-48W Van Body chemical trailer, cargo doors, 3 - Ace Roto - Mold 1650 gallon poly tanks, 3 - chemical mixing cones, 3" fill, Good frame-tires, tandem axle, air ride suspension, 295/75R22.5 tires. Notes: This is part of Ruter Farms retirement auction.



#93 - 2012 Jet Grain Trailer (PZ1531)

2012 Jet Grain Trailer (PZ1531), 2011 Jet 42' aluminum hopper bottom grain trailer, tandem axle, air ride suspension, Shurco Smart3 ProTrap electric traps, Lock Down electric roll over tarp with remote, has hauled NO fertilizer, 11R24.5 tires, aluminum rims. Notes: This is part of Ruter Farms retirement auction.



#94 - 2012 Volvo Day Cab Truck (PZ1530)

2012 Volvo Day Cab Truck (PZ1530), Volvo D13H425 hp diesel engine, Auto Shift AT02612D transmission, air conditioning, heat, Am/Fm CD stereo, cruise control, power windows, tandem axle, full screw, air ride suspension, 5th wheel, 275/80R22.5 front tires, aluminum rims, 295/75R22.5 rear tires, aluminum rims, fenders, shows 765,194 miles. Notes: This is part of Ruter Farms retirement auction.



#95 - 1985 IHC F-9370 Eagle Truck (PZ1532)

1985 IHC F-9370 Eagle Truck (PZ1532), 400 Cummins diesel engine, 15 speed transmission with overdrive, air conditioning, heat, Am/Fm cassette radio, power steering, cruise control, tandem axle, full screw, air ride suspension, 5th wheel, 11R24.5 tires, aluminum rims, fenders, miles unknown. Notes: This is part of Ruter Farms retirement auction.



#96 - Hitch Dock Travis Seed Cart (PZ1538)

Hitch Dock Travis Seed Cart (PZ1538), Hitch Dock Travis model SC2000 seed cart, 2 box, hydraulic fold, remote control, Honda GX240 electric start gas engine, 2-5/16 ball, tandem axle, ST205/75R15 tires. Notes: Always Shedded, No Title. This is part of Ruter Farms retirement auction.



#97 - Dresser Hoist (PZ1539)

Dresser Hoist (PZ1539), Dresser model 61-81713 M-2099 hoist, I beams, Budget 4000 lb hoist, not complete. Notes: This is part of Ruter Farms retirement auction.



#98 - Liquid Storage Tank (PZ1567, Unit 1)

Liquid Storage Tank (PZ1567, Unit 1), 2400 gallon stainless steel cone bottom vertical liquid storage tank, valve, stainless steel legs. Notes: This is part of Ruter Farms retirement auction.



#99 - Liquid Storage Tank (PZ1568, Unit 2)

Liquid Storage Tank (PZ1568, Unit 2), 2400 gallon stainless steel cone bottom vertical liquid storage tank, valve, stainless steel legs. Notes: This is part of Ruter Farms retirement auction.



#100 - Transfer Pump (PZ1569)

Transfer Pump (PZ1569), Honda gas engine/pump, hoses. Notes: This is part of Ruter Farms retirement auction.



#101 - 2013 John Deere 4940 Dry Machine (PZ1546)

2013 John Deere 4940 Dry Machine (PZ1546) John Deere diesel engine, hydrostatic transmission, air conditioning, heat, Am/Fm radio, New Leader L3220 G4 stainless steel dry spreader box, twin spinner, all hydraulic, New Leader insert, 380/105R50 tires, shows 1227 hours. Notes:



#102 - 1952 Beaird (DR1653, Tank #8)

1952 Beaird (DR1653, Tank #8) 43,500 gallon pressure vessel, 225 PSI, sitting on steel saddles, data tag, SN 3691-3, approximately 10' diameter, and 77.5' long, NEW paint. Notes: This tank needs removed by July 1, 2019. Removal and transportation nad crane are the sole responsibility of the buyer. There is a crane available on site, for bid or crane information contact Bruce 575-302-0512.



#103 - New Leader Dry Spreader Box (PZ1506)

New Leader Dry Spreader Box (PZ1506), New Leader L3030 G4 - 11' stainless steel dry spreader box, twin spinner, all hydraulic, S/N 134667, MultiApplier - 5' stainless steel insert. Notes:



#104 - Flotation Tires (PZ1507)

Flotation Tires (PZ1507), 4 - Michelin IF 710/70R42 tires and rims, fenders. Notes:



#105 - 1981 Kari Kool Tanker (DR1764)

1981 Kari Kool Tanker (DR1764), 6700 gallon stainless steel conical liquid transport trailer, single compartment, tandem axle, spring suspension, top manway, front & rear fenders, 24.5 tires. Notes: Frame has NEW paint.



#106 - 1999 Case IH 3300 (DR1642)

1999 Case IH 3300 (DR1642), cab/chassis, Cat diesel engine, does not currently, Allison automatic transmission, (tranny has been REBUILT 300 acres ago), machine was a lime spreader. Notes: Front tire and rear end housing ARE NOT INCLUDED.



#107 - Floater Tires (DR1643)

Floater Tires (DR1643), (2) 42X25.00-20 floater tires, mounted on 10 bolt rims, came IH chassis. Notes:



#108 - 2004 Polaris 500 (DR1645)

2004 Polaris 500 (DR1645), Sportsman model, 4X4, gas engine, automatic, front & rear racks, rear hitch, good tires, good running quad. Notes:



#109 - Plywood Sheets (DR1646)

Plywood Sheets (DR1646), approximately 3" thick plywood pads, full sheets and half sheets. Notes:



#110 - Kraus Blender (DR1644)

Kraus Blender (DR1644), 5 ton stainless steel dry fertilizer blender, stainless steel hopper, 35' stainless steel loadout conveyor, 24" belt. Notes: Used in fall 2018. Dismantle, removal, liability and transportation are the sole responsibility of the buyer. Needs to be removed by July 1, 2019, call for appointment.



#111 - Layco Hopper/Conveyor (DR1647)

Layco Hopper/Conveyor (DR1647), stainless steel hopper, approximately 8 ton capacity, hopper has built in crusher, 36' stainless steel loadout conveyor, 36" belt, includes scale. Notes: Used in fall 2018. Dismantle, removal, liability and transportation are the sole responsibility of the buyer. Needs to be removed by July 1, 2019, call for appointment.



#112 - Rubber Scraper (DR1643)

Rubber Scraper (DR1643), approximately 4' rubber scraper for bucket mount. Notes:



#113 - Air Tank (DR1649)

Air Tank (DR1649), 500 gallon air tank from compressor, needs relief valve. Notes:



#114 - Layco Belt (DR1628)

Layco Belt (DR1628), stainless steel field loader, self contained hydraulics, self propelled gear, cleted belt. Notes:



#115 - New Leader L3020 Box (DR1629)

New Leader L3020 Box (DR1629), model G4 stainless steel spinner box, belt/chain, came off Case IH post machine. Notes: Axle is NOT INCLUDED.



#116 - NEW Openers (DR1631)

NEW Openers (DR1631), (24) NEW NEVER used row openers for Kinze 4900 planter. Notes:



#117 - Gustafson Treater (DR1630)

Gustafson Treater (DR1630), stainless steel drum treater, stainless steel inductor tank, (2) oly inductors. Notes:



#118 - Ag Systems Applicator (DR5563)

Ag Systems Applicator (DR5563), 12 row dry fertilizer bander, front coulters, stainless steel hopper, ground drive, 380/90R46 row crop tires. Notes:



#119 - Hypro Pump (NP8126)

Hypro Pump (NP8126), Model 9008C-0, 1000 RPM PTO, sprayer pump. Notes:



#120 - Ace Sprayer Pump (NP8127)

Ace Sprayer Pump (NP8127), electric clutch, belt drive sprayer pump. Notes:



#121 - 3 Point Sprayer (NP8128)

3 Point Sprayer (NP8128), 45' boom, hand fold sprayer, with suspension, hydraulic wings, foamer, 3 section. Notes:



#122 - 1998 Case 1010 Combine Header (PD1348)

1998 Case 1010 Combine Header (PD1348), 20 Foot Bat Reel Header, oiled gear box. Notes:



#123 - 1999 Shelbourne Reynolds CX66 Stripper Header (PD1354)

1999 Shelbourne Reynolds CX66 Stripper Header (PD1354), 22 Foot. Notes:



#124 - 1998 Case 1010 Combine Header (PD1349)

1998 Case 1010 Combine Header (PD1349), 20 Foot Bat Reel Header, Oiled gear box. Notes:



#125 - 1999 Shelbourne Reynolds CX66 Stripper Header (PD1351)

1999 Shelbourne Reynolds CX66 Stripper Header (PD1351), 22 Foot. Notes:



#126 - 1987 Donahue 7030 Single Header Trailer (PD1350)

1987 Donahue 7030 Single Header Trailer (PD1350). Notes: This trailer will be sold NO TITLE.



#127 - 1996 Willmar Air Ride 745 Sprayer (NP8129)

1996 Willmar Air Ride 745 Sprayer (NP8129), John Deere 4039 turbo diesel engine, hydrostatic transmission, 500 gallon poly liquid system, 60' boom, TeeJet 3-way nozzle bodes, pump, 50 gallon poly rinse tank, 12.4-24 tires, Mid-Tech controller, Raven Envizio Pro, show 3,809 hour. Notes:



#128 - Case IH 700 Pro (DR1632)

Case IH 700 Pro (DR1632), Pro 700 monitor on Version 31, large tractor which is compatible with any Case IH or New Holland large MFWD or 4WD tractor. Any CNH dealer can download new software on the 700 Pro for any tractor, combine, or sprayer application. This unit includes ram bar mount for Case IH AFS & New Holland Intelliview ready equipment. Notes: Shipping costs are \$20 via UPS in Continental US.



#129 - Case IH 700 Pro (DR1633)

Case IH 700 Pro (DR1633), Pro 700 monitor on Version 31, large tractor which is compatible with any Case IH or New Holland large MFWD or 4WD tractor. Any CNH dealer can download new software on the 700 Pro for any tractor, combine, or sprayer application. This unit includes ram bar mount for Case IH AFS & New Holland Intelliview ready equipment. Notes: Shipping costs are \$20 via UPS in Continental US.



#131 - Case IH 700 Pro (DR1634)

Case IH 700 Pro (DR1634), Pro 700 monitor on Version 31, large tractor which is compatible with any Case IH or New Holland large MFWD or 4WD tractor. Any CNH dealer can download new software on the 700 Pro for any tractor, combine, or sprayer application. This unit includes ram bar mount for Case IH AFS & New Holland Intelliview ready equipment. Notes: Shipping costs are \$20 via UPS in Continental US.



#132 - Case IH 700 Pro (DR1635)

Case IH 700 Pro (DR1635), Pro 700 monitor on Version 31, large tractor which is compatible with any Case IH or New Holland large MFWD or 4WD tractor. Any CNH dealer can download new software on the 700 Pro for any tractor, combine, or sprayer application. This unit includes ram bar mount for Case IH AFS & New Holland Intelliview ready equipment. Notes: Shipping costs are \$20 via UPS in Continental US.



#133 - Case IH 700 Pro (DR1636)

Case IH 700 Pro (DR1636), Pro 700 monitor on Version 31, large tractor which is compatible with any Case IH or New Holland large MFWD or 4WD tractor. Any CNH dealer can download new software on the 700 Pro for any tractor, combine, or sprayer application. This unit includes ram bar mount for Case IH AFS & New Holland Intelliview ready equipment. Notes: Shipping costs are \$20 via UPS in Continental US.



#134 - 2018 Case IH 372 Monitor (DR1637)

2018 Case IH 372 Monitor (DR1637), unlocked to RTK with NO radio. This 372 can receive Omnistar, Centerpoint RTK, RTX, and Glonass signals. This receiver is currently on Version 9.00 and is compatible with any Case IH AFS & New Holland Intelliview tractors, combines or sprayers. This unit includes mounting bracket for Case IH AFS & New Holland Intelliview ready tractors. Notes: Shipping costs are \$20 via UPS in Continental US.



#135 - Case IH 372 Monitor (DR1638)

Case IH 372 Monitor (DR1638), unlocked to RTK with NO radio. This 372 can receive Omnistar, Centerpoint RTK, RTX, and Glonass signals. This receiver is currently on Version 9.00 and is compatible with any Case IH AFS & New Holland Intelliview tractors, combines or sprayers. This unit includes mounting bracket for Case IH AFS & New Holland Intelliview ready tractors. Notes: Shipping costs are \$20 via UPS in Continental US.



#136 - New Holland FM-750 Monitor (DR1639)

New Holland FM-750 Monitor (DR1639), RTK & Glonass unlocked. This monitor is unlocked for DGPS, Omnistar XP/HP, Centerpoint RTX, RTK & Glonass. It is on Firmware Version 7.78 and has 3 hours total runtime. It includes power cables, antenna cable, Ram mount, and ag25. Notes: Shipping costs are \$20 via UPS in Continental US.



#137 - Case IH FM-750 Monitor (DR1640)

Case IH FM-750 Monitor (DR1640), RTK & Glonass unlocked. This monitor is unlocked for DGPS, Omnistar XP/HP, Centerpoint RTX, RTK & Glonass. It is on Firmware Version 7.78 and has 3 hours total runtime. It includes power cables, antenna cable, Ram mount, and ag25. Notes: Shipping costs are \$20 via UPS in Continental US.



#138 - Case IH FM1000 (DR1641)

Case IH FM1000 (DR1641), RTK & Glonass unlocked. This monitor is unlocked for DGPS, Omnistar XP/HP, Centerpoint RTX, RTK & Glonass. It is on Firmware 10.13 and has 2989 hours total run time. It includes power cables, antenna cable, ram mount and ag25. Notes: Shipping costs are \$20 via UPS in Continental US.



#139 - 1998 John Deere 5310 Tractor (NP8130)

1998 John Deere 5310 Tractor (NP8130), John Deere diesel engine, rollover bar, PTO, 3 point, 2 port hydraulics, 11.2-24 front tires, 16.9-30 rear tires, (10) front suitcase weights, shows 1,330 hours. Notes: Needs new clutch, fuel tank seal leaks, radiator sensor seal leaks.



#140 - John Deere 5410 Tractor (NP8131)

John Deere 5410 Tractor (NP8131), John Deere diesel engine (S/N PE4045D111921), canopy, (10) front suitcase weights, 3 point, SpeeCo quick hitch, 2 port hydraulics, shows 797 hours. Notes:



#141 - John Deere 7300 Planter (NP8132)

John Deere 7300 Planter (NP8132), 4 row, 3 point, row markers, closing wheels, trash whippers. Notes:



#142 - Ag Products Hooded Sprayer (NP8133)

Ag Products Hooded Sprayer (NP8133), 3 point, pump, 3 poly liquid tanks, manual fold boom. Notes:



#143 - King Kutter Disc (NP8134)

King Kutter Disc (NP8134), 3 point, front ribbed discs, smooth rear discs, flat bottom poly tank. Notes:



#144 - 2016 Yetter Shark Tooth Residue Managers (NP8135)

2016 Yetter Shark Tooth Residue Managers (NP8135), back swept offset spiders, universal face plate, ratchet adjusted, visual depth gauge, 8 rows, came off John Deere 1725 planter. Notes:



#145 - NEW Raven AccuFlow Super Cooler (NP8136)

NEW Raven AccuFlow Super Cooler (NP8136), NEVER USED. Notes:



#146 - Tyler Dry Tender Box (PZ1541, Unit 11456)

Tyler Dry Tender Box (PZ1541, Unit 11456), Tyler 16 ton dry tender box side discharge auger, all hydraulic, roll over tarp. Notes: Running gear NOT included.



#147 - 1999 Freightliner Truck (PZ1542, Unit 11447)

1999 Freightliner Truck (PZ1542, Unit 11447), Cummins M11 Plus diesel engine, 9 speed transmission, air conditioning, heat, Am/Fm radio, cruise control, engine brake, tandem axle, full screw, air ride suspension, cheater axle, 11R22.5 front tires, 295/75R22.5 rear tires, 215/75R17.5 cheater tires, shows 814,519 miles. Notes: The back deck and pump are NOT INCLUDED.



#148 - Ray Man Dry Tender Box (PZ1544, Unit 55)

Ray Man Dry Tender Box (PZ1544, Unit 55), Ray Man model 18CHIIFB stainless steel dry tender box, side over top discharge auger, all hydraulic, roll over tarp. Notes:



#149 - 2006 Freightliner Columbia Truck (PZ1543, Unit 55)

2006 Freightliner Columbia Truck (PZ1543, Unit 55), Detroit Series 60 diesel engine, Freightliner Smartshift with Eaton Fuller automatic transmission, air conditioning, heat, Am/Fm CD stereo, cruise control, engine brake, tandem axle, full screw, air ride suspension, cheater axle, 315/80R22.5 front tires, 295/75R22.5 rear tires, 255/70R22.5 cheater tires, approx. 750,000 miles. Notes:



#150 - 2012 Case IH 1250 (DR1730)

2012 Case IH 1250 (DR1730), Early Riser model, 16 row 30", ASD, liquid fertilizer set up w/300 gallon poly liquid tank, pneumatic down pressure, trash whips, hydraulic markers, Case IH 372 monitor, corn & bean meters. Notes:



#151 - Blu-jet Landwalker (DR1722)

Blu-jet Landwalker (DR1722), 15 knife 37.5' pull type tool bar, front coulters, ground drive pump, walking tandem axles, hydraulic wings & gauge wheels. Notes:



#152 - Nh3 Nurse Tank (DR1723)

Nh3 Nurse Tank (DR1723), 1000 gallon Nh3 nurse tank, top front fill, data tag, 5th wheel style running gear, rear hitch, 11L-15 tires. Notes:



#153 - Nh3 Nurse Tank (DR1724)

Nh3 Nurse Tank (DR1724), 1450 gallon Nh3 nurse tank, top front fill, data tag, 5th wheel style running gear, rear hitch, 14L-16.1 tires. Notes:



#154 - Nh3 Nurse Tank (DR1725)

Nh3 Nurse Tank (DR1725), 1450 gallon Nh3 nurse tank, top front fill, data tag, 5th wheel style running gear, rear hitch, 12.5L-15 tires. Notes:



#155 - Nh3 Parts (DR1726)

Nh3 Parts (DR1726), 2 - pallets, 1=poly rinse tanks, 1=tank gauges, NEW knives, harnesses. Notes:



#156 - Nh3 Hoses (DR1727)

Nh3 Hoses (DR1727), spool of 3/8" 150 PSI hose, 3-350 PSI Nh3 hoses, 2" Nh3 hose. Notes:



#157 - Nh3 Parts (DR1728)

Nh3 Parts (DR1728), pallet lot of Nh3 gauges, flow meters, C shanks, Nh3 knives. Notes:



#158 - Tool bar Coulters (DR1729)

Tool bar Coulters (DR1729), pallet lot of coulters, ripple and smooth coulters, (16) blades only. Notes:



#159 - 2001 Freightliner Flatbed (TH454)

2001 Freightliner Flatbed (TH454), CAT 3126-B DITA, Eaton Fuller 10 speed transmission, front tires: 275/80 R22.5 at 75% tread, rear tires: 11R22.5 at 40% tread, new head gaskets, 20'x8' flatbed with piggy back forklift capability, shows 351000 miles. Notes:



#160 - John Deere Globe/Lightbar (PZ1548)

John Deere Globe/Lightbar (PZ1548), John Deere StarFire 300 globe, lightbar, manual. Notes:



#161 - Flotation Tires (PZ1547)

PZ1547, 4 - Firestone 20.8-38 flotation tires, 10 bolt rim pattern, fits John Deere 4710-4720-4730 sprayer. Notes:



#162 - 2005 Miller Nitro 2275HT Sprayer (PZ1545)

2005 Miller Nitro 2275HT Sprayer (PZ1545), diesel engine, hydrostatic transmission, air conditioning, heat, Am/Fm radio, 1400 gallon stainless steel liquid system, 90' boom, 100 gallon poly rinse tank, Ag Leader Insight monitor, Raven Cruiser lightbar, shows 3102 hours. Notes:



#165 - 2003 Magnolia Trailer (DR1668, Unit 848)

2003 Magnolia Trailer (DR1668, Unit 848), Adams 24 ton hydraulic stainless steel fertilizer tender, self contained hydraulics diesel power unit, rear auger, roll tarp, tandem axle trailer, 255/70R22.5 tires. Notes: Trailer was used in 2018. Power unit may need battery, brakes may be sticky.



#166 - 2010 Magnolia Trailer (DR1669,Unit 842)

2010 Magnolia Trailer (DR1669,Unit 842), Adams 24 ton hydraulic stainless steel fertilizer tender, self contained hydraulics diesel power unit shows 512 hours, rear auger, roll tarp, tandem axle trailer, 255/70R22.5 tires.tandem axle trailer, 255/70R22.5 tires. Notes: Trailer was used in 2018. Power unit may need battery, brakes may be sticky.



#167 - New Goodyear Tires (TR7701)

New Goodyear Tires (TR7701), (4) 21.5x16.1 tires. Notes:



#168 - Clipper Super 68D Seed Cleaner (TR7700)

Clipper Super 68D Seed Cleaner (TR7700), serial number: 15137. 3 screen stationary cleaner, in working order. Has 2 new hangers and new cables for the brushes. Requires a 10hp electric drive motor, slide base is set for a 215T frame size. Pulley and 4 new belts for the main drive are included. Sells with Oat cleaning screens. The screens are variable-pitch, so you can adjust the slope of each screen independently from the other 2. Screen size is 54? Wide x 60? Long. Rated capacity is 200-250 bushels per hour for grains. Ship weight is around 3,300lbs. Notes: Electric motor NOT included. Have other screens that can be purchased separately.



#169 - 2001 Terra Gator 8103 Liquid Floater (ED924)

2001 Terra Gator 8103 Liquid Floater (ED924), John Deere 8.1 liter engine, Terra Shift, 1800 gallon SS liquid system, 60/80 booms, SS foam marker tank, top rinse tank, AC/heat, AM/FM radio, Raven Vipor Pro, Raven Smart Trax light bar, 1000/50 R25 Alliance front tire at 50%, 1000/50 R25 rear Michelin, new turbo last year, Rebuilt transmission at 5500 hours, hours shown 7720, this machine has very little rust as it was a liquid machine and a lime machine, unit runs excellent. Notes:



#170 - 6 Anhydrous Spring Shanks (PD1361)

6 Anhydrous Spring Shanks (PD1361), 6 total, used shanks on pallet with hardware. Notes:



#171 - Progressive 1500 16 Knife Toolbar (PD1358)

Progressive 1500 16 Knife Toolbar (PD1358), 30 inch spacing, 12.5L15SL tires, 4 tires on the mainframe are brand new, all new wheel bearings and new walking tandem bearings, no controller or cooler, 18 inch DMI sealers. Notes:



#172 - P&H 11 Knife Toolbar (PD1359)

PD1359, 30 inch spacing, Yetter coulters measure 19 inches, DMI sealers measure 13.5 inches, Dickey John CCS controller and thermal transfer unit, new servo valve, rebuilt flow meter, John Blue Impellicone distributor, new lines to each row, pressure hoses good until 2022. Notes:



#173 - Hiniker Anhydrous System (PD1360)

Hiniker Anhydrous System (PD1360), dual coolers, servo, flow meter, hydraulic shutoff, 8150 monitor and harness. Notes:



#174 - John Deere 8345R Tractor (ED922)

John Deere 8345R Tractor (ED922), C11 4 hydraulic boxes, tires are at 50%, front size 420/85R34, rear tire size 480/85R50, tractor was used in the spring and fall only on the field cultivator and a grain cart, GPS globe does NOT sell with tractor, hours show 3345. Notes: GPS globe is NOT included with tractor.



#175 - 2012 International ProStar (TH462)

2012 International ProStar (TH462), MaxxForce 13 engine, 10 speed transmission, blue, mid-roof sleeper. Notes: This truck is a non-runner.



#176 - John Deere 7200 Planter (TR7703)

John Deere 7200 Planter (TR7703), 12 Row, 30" spacing, Vacuum planter, hydraulic front fold, Martin till trash whippers, copper head closing wheels, extended tongue, new drive chains last year, 250 monitor, independent markers, Air bags and hardware to install included, Farmer owned always in the shed, very low acres, bean and corn plates included. Notes:



#177 - 2013 RBR Vector 300 (RMC 296 Unit 5076)

2013 RBR Vector 300 (RMC 296 Unit 5076), NON RUNNER, has no batteries, diesel engine, Allison automatic transmission, cab heat/air conditioning, New Leader L4000 G4 hydraulic stainless steel dry spinner box, Multiplier insert box, Raven Viper Pro controller, roll over tarp, light bar swathing, 380/90R46 row crop tires, shows 1899 hours. Notes: Machine NEEDS batteries. All tires are flat, has not been run in 6 months.



#178 - 2005 Magnolia Trailer (DR1670,Unit 846)

2005 Magnolia Trailer (DR1670,Unit 846), Adams 24 ton hydraulic stainless steel fertilizer tender, self contained hydraulics diesel power unit, rear auger, roll tarp, tandem axle trailer, 255/70R22.5 tires. Notes: Trailer was used in 2018. Power unit may need battery, brakes may be sticky.



#179 - 2005 Magnolia Trailer (DR1671, Unit 845)

2005 Magnolia Trailer (DR1671, Unit 845) , Adams 24 ton hydraulic stainless steel fertilizer tender, self contained hydraulics diesel power unit, rear auger, roll tarp, tandem axle trailer, 255/70R22.5 tires. Notes: Trailer was used in 2018. Power unit may need battery, brakes may be sticky.



#180 - Adams Conveyor (RMC298)

Adams Conveyor (RMC298), approximately 25' stainless steel belt conveyor, 10 hp electric drive motor, cleated belt, steel leg stand. Notes:



#181 - Tyler Blender (RMC250)

Tyler Blender (RMC250), stainless steel horizontal dry fertilizer blender, NO SCALE indicator. Notes:



#182 - Adams Conveyor (RMC251 Unit 3616)

Adams Conveyor (RMC251 Unit 3616), 30' stainless steel conveyor, top electric drive motor, stationary stand. Notes:



#183 - 1999 Mack CH613 (DR1733 Unit 1534)

1999 Mack CH613 (DR1733 Unit 1534), NON RUNNER, Mack diesel engine, 8 speed transmission, tandem axle full screw, Adams 16 ton stainless steel hydraulic dry fertilizer tender box, rear auger roll tarp, 22.5 tires, outside aluminum wheels, shows 514,566 miles. Notes:



#184 - 1999 Freightliner (DR1734 Unit 7922)

1999 Freightliner (DR1734 Unit 7922), NON RUNNER, Cat diesel engine, 9 speed transmission, tandem axle full screw, Adams 16 ton stainless steel hydraulic dry fertilizer tender box, rear auger roll tarp, 22.5 tires, outside aluminum wheels, shows 365,805 miles. Notes:



#185 - 2012 Brillion WFP32 32' Quad Packer (JJ122)

2012 Brillion WFP32 32' Quad Packer (JJ122), 2012 WFP32 Brillion 32' Quad Packer, Low Acres, Always Shredded, Tires Are Like New, Scrapers are Complete and in good shape, light kit, All updates done, No cracks, No welds, Field Ready. Notes:



#186 - Orthman Tracker IV System (KMK785)

Orthman Tracker IV System (KMK785), Orthman, model 633-600, 6 blade tracker system, 9.5" blades, 30" row spacing, bearings updated. Notes:



#187 - 2010 Magnolia Trailer (DR1672, Unit 844)

2010 Magnolia Trailer (DR1672, Unit 844) Adams 24 ton hydraulic stainless steel fertilizer tender, self contained hydraulics diesel power unit shows 512 hours, rear auger, roll tarp, tandem axle trailer, 255/70R22.5 tires. Notes: Trailer was used in 2018. Power unit may need battery, brakes may be sticky.



#188 - 2010 Magnolia Trailer (DR1673, Unit 843)

2010 Magnolia Trailer (DR1673, Unit 843) Adams 24 ton hydraulic stainless steel fertilizer tender, self contained hydraulics diesel power unit shows 512 hours, rear auger, roll tarp, tandem axle trailer, 255/70R22.5 tires. Notes: Trailer was used in 2018. Has all NEW rear brake cans, Landing gear is CRACKED at frame. Power unit may need battery, brakes may be sticky.



#189 - Two (2) Sets of Mounted Bar Ridge Huggers (LD126)

Two (2) Sets of Mounted Bar Ridge Huggers (LD126), both came off John Deere 1720 planter, 7"x7" U-bolts, 9.5L-15SL tires. Notes:



#190 - 2018 Specialty Trailer (DR1738)

2018 Specialty Trailer (DR1738), 6.5' X 16' tandem axle tilt bed trailer, 2' rear beaver tail, D tie down rings, stake pockets, 225/75R15 tires, NO TITLE. Notes: NO TITLE.



#191 - 1999 Ford F150 (DR1763)

1999 Ford F150 (DR1763), gas engine, automatic transmission, extended cab, 4X4, AM/FM cassette radio, air conditioning, cruise control, power windows & locks, box liner, rear receiver hitch, rear new 265/70R16 tires. Notes: Odometer is unreadable. Engine has exhaust manifold leak. Rear tool box DOES NOT SELL.



#192 - 2003 Magnolia Trailer (DR1674, Unit 849)

2003 Magnolia Trailer (DR1674, Unit 849), Adams 24 ton hydraulic stainless steel fertilizer tender, self contained hydraulics diesel power unit shows 512 hours, rear auger, roll tarp, tandem axle trailer, 255/70R22.5 tires. Notes: Trailer was used in 2018. Power unit may need battery, brakes may be sticky.



#193 - 2010 Magnolia Trailer (DR1675, Unit 841)

2010 Magnolia Trailer (DR1675, Unit 841), Adams 24 ton hydraulic stainless steel fertilizer tender, self contained hydraulics diesel power unit shows 469 hours, rear auger, roll tarp, tandem axle trailer, 255/70R22.5 tires. Notes: Trailer was used in 2018. Has 4 NEW brake cans, and NEW hydraulic cylinders. Power unit may need battery, brakes may be sticky.



#194 - 2005 Magnolia Trailer (DR1676, Unit 847)

2005 Magnolia Trailer (DR1676, Unit 847) Adams 24 ton hydraulic stainless steel fertilizer tender, self contained hydraulics diesel power unit shows 512 hours, rear auger, roll tarp, tandem axle trailer, 255/70R22.5 tires. Notes: Trailer was used in 2018. Power unit may need battery, brakes may be sticky.



#195 - Orthman Tracker IV System (KMK786)

Orthman Tracker IV System (KMK786), Orthman, model 633-600, 6 blade tracker system, 9.5" blades, 30" row spacing, bearings updated. Notes:



#196 - Fibergalss Tank (CP1114)

Fibergalss Tank (CP1114), 21,000 gal fibergalss tank, flat bottom, man hole. Notes:



#197 - Hyster Forklift (CP1113)

Hyster Forklift (CP1113) LP gas engine, forks, 2 stage mast, hard tire, shuttle transmission, Hydraulic leak, 2734 hours, side shift. Notes:



#198 - Storage Tank (DR1581)

Storage Tank (DR1581), 12,000 gallon upright steel liquid tank, approximately 18' tall, sight gauge. Notes: Buyer needs to make arrangements for removal.



#199 - Storage Tank (DR1582)

Storage Tank (DR1582), 12,000 gallon upright steel liquid tank, approximately 18' tall, sight gauge. Notes: Buyer needs to make arrangements for removal.



#200 - Storage Tank (DR1583)

Storage Tank (DR1583) 10,000 gallon upright steel liquid tank, approximately 18' tall, sight gauge. Notes: Buyer needs to make arrangements for removal.



#201 - Melroe 210 Spra Coupe (PZ1523)

Melroe 210 Spra Coupe (PZ1523), 4 cylinder gas engine, manual transmission, 125 gallon poly tank, 50' boom, boom selector valve, tow hitch. Notes:



#203 - Liquid Nurse Tank (DR1550)

Liquid Nurse Tank (DR1550), 2400 gallon stainless steel liquid nurse tank, ladder. Notes: Running gear NOT included.



#204 - (15) Yetter Magnum Row Units (LD120)

(15) Yetter Magnum Row Units (LD120), high speed fertilizer units, 8 right hand and 7 left hand units, all in excellent condition with new beaver tails and 3/8 liquid tubes 600 acres ago. Notes: Toolbar is NOT included. These units are complete and need nothing.



#205 - (2) Two Bulk Fill Boxes from Kinze 3650 Planter (LD122)

(2) Two Bulk Fill Boxes from Kinze 3650 Planter (LD122). Notes: Trailer is NOT included.



#206 - (31) Thirty-One Kinze Mini Hoppers (LD123)

(31) Thirty-One Kinze Mini Hoppers (LD123), total of 31 mini hoppers from a Kinze 3650 Planter. Notes:



#207 - (6) Six Catwalks from Kinze 3650 Planter (LD124)

(6) Six Catwalks from Kinze 3650 Planter (LD124), total of (6) six catwalks from Kinze 3650 planter. Notes:



#208 - 1998 Hagie 204 Detasseler (TR7621)

1998 Hagie 204 Detasseler (TR7621), Diesel engine, hydrostat transmission, w/ 4 Row Male Roguer, 2852 Hours. Notes:



#209 - Hagie 200 Detasseler (DR1539)

Hagie 200 Detasseler (DR1539), Gas engine, hydrostat transmission, 12.4-28 tires, 8 over 10 Puller, 2116 Hours. Notes:



#210 - PHB Detasseler (PZ1460)

PHB Detasseler (PZ1460), gas engine, hydrostat transmission, 6 row puller with no heads, Hagie Tasseltrol system, 11.2-28 tires, 1138 hours, (#P-1). Notes:



#211 - PHB Detasseler (PZ1461)

PHB Detasseler (PZ1461), gas engine, hydrostat transmission, 6 row puller with no heads, Hagie Tasseltrrol system, 11.2-28 tires, 1203 hours, (#P-3). Notes:



#212 - PHB Detasseler (PZ1462)

PHB Detasseler (PZ1462), gas engine, hydrostat transmission, 6 row puller with no heads, Hagie Tasseltrrol system, 11.2-28 tires, 1283 hours, (#P-3). Notes:



#213 - PHB Detasseler (PZ1463)

PHB Detasseler (PZ1463), gas engine, hydrostat transmission, 6 row cutter w/ Hagie heads, 11.2-28 tires, 1400 hours, (#C-2). Notes:



#214 - PHB Detasseler (PZ1464)

PHB Detasseler (PZ1464), gas engine, hydrostat transmission, 6 row cutter w/ Hagie heads, 11.2-28 tires, 1393 hours, (#C-3). Notes: Missing Carburetor.



#215 - PHB Detasseler (PZ1465)

PHB Detasseler (PZ1465), gas engine, hydrostat transmission, 6 row puller w/ PHB heads, 11.2-28 tires, 943 hours, (#9113). Notes:



#216 - PHB Detasseler (PZ1466)

PHB Detasseler (PZ1466), gas engine, hydrostat transmission, 6 row Cutter w/ Hagie heads, 11.2-28 tires, 1173 hours, (#PRI). Notes: Missing Cutter Motors.



#217 - PHB Detasseler (PZ1468)

PHB Detasseler (PZ1468), gas engine, hydrostat transmission, 6 row puller w/ PHB heads, 11.2-28 tires, 692 hours, (#9212). Notes: Carburetor not hooked up.



#218 - PHB Detasseler (PZ1467)

PHB Detasseler (PZ1467), gas engine, hydrostat transmission, 6 row cutter w/ Hagie heads, 11.2-28 tires, 1305 hours, (#C-1). Notes:



#219 - PHB Detasseler (PZ1469)

PHB Detasseler (PZ1469), gas engine, hydrostat transmission, 6 row puller w/ PHB heads, 11.2-28 tires, 892 hours, (#9108). Notes: Missing Radiator, Carburetor, and 1 exhaust manifold.



#220 - PHB Detasseler (PZ1470)

PHB Detasseler (PZ1470), gas engine, hydrostat transmission, 6 row puller with no heads, Hagie Tasseltrrol system, 11.2-28 tires, 922 hours, (#P-2). Notes:



#221 - Hagie 200 Detasseler (PZ1471)

Hagie 200 Detasseler (PZ1471), Gas engine, hydrostat transmission, 12 row, Hagie Cutter heads, 12.4-28 tires, Hagie Tasseltrrol, 1850 hours. Notes:



#222 - Personnel Carrier (PZ1472)

Personnel Carrier (PZ1472), Personnel Carrier, Self Propelled, 11.2-24 Tires, gas engine. Notes:



#223 - Personnel Carrier (PZ1472-1)

Personnel Carrier (PZ1472-1), Personnel Carrier, Self Propelled, 11.2-24 Tires, gas engine. Notes:



#224 - Personnel Carrier (PZ1472-2)

Personnel Carrier (PZ1472-2), Personnel Carrier, Self Propelled, 11.2-24 Tires, gas engine. Notes:



#225 - Personnel Carrier (PZ1472-3)

Personnel Carrier (PZ1472-3), Personnel Carrier, Self Propelled, 11.2-24 Tires, gas engine. Notes:



#226 - Personnel Carrier (PZ1472-4)

Personnel Carrier (PZ1472-4), Personnel Carrier, Self Propelled, 11.2-24 Tires, gas engine. Notes:



#227 - Personnel Carrier (PZ1472-5)

Personnel Carrier (PZ1472-5), Personnel Carrier, Self Propelled, 11.2-24 Tires, gas engine. Notes:



#228 - Personnel Carrier (PZ1472-6)

Personnel Carrier (PZ1472-6), Personnel Carrier, Self Propelled, 11.2-24 Tires, gas engine. Notes:



#229 - Personnel Carrier (PZ1472-7)

Personnel Carrier (PZ1472-7), Personnel Carrier, Self Propelled, 11.2-24 Tires, gas engine. Notes:



#230 - Personnel Carrier (PZ1472-8)

Personnel Carrier (PZ1472-8), Personnel Carrier, Self Propelled, 11.2-24 Tires, gas engine. Notes:



#231 - Personnel Carrier (PZ1472-9)

Personnel Carrier (PZ1472-9), Personnel Carrier, Self Propelled, 11.2-24 Tires, gas engine. Notes:



#232 - Hagie Flamer (DR1552)

Hagie Flamer (DR1552), Self Propelled, Propane tank, gas engine, hydrostat transmission, 11.2-24 tires, 1625 hours. Notes:



#233 - 1992 B-B Detasseler Trailer (DR1553)

1992 B-B Detasseler Trailer (DR1553), tandem axle, steel deck, ramps, bumper hitch, spring ride, LT245/75R16 tires. Notes: For Hagie 204 or 200 Model.



#234 - 1996 Gooseneck Detasseler Trailer (DR1555)

1996 Gooseneck Detasseler Trailer (DR1555), tandem axle, steel deck, ramps, spring ride, 7.00-15 tires, slide outs. Notes: For Hagie 470 Detasseler.



#235 - M&W 426 Detasseler (TR7635)

M&W 426 Detasseler (TR7635), diesel engine, hydrostat transmission, 8 row Cutter head (TR7637), 11.2-28 tires, 2115 hours. Notes:



#236 - M&W 426 Detasseler (TR7636)

M&W 426 Detasseler (TR7636), diesel engine, hydrostat transmission, 8 row Cutter head (TR7638), 11.2-28 tires, 2897 hours. Notes:



#237 - M&W 426 Detasseler (TR7643)

M&W 426 Detasseler (TR7643), diesel engine, hydrostat transmission, 8 row Cutter head (TR7640), 11.2-28 tires, 2508 hours. Notes:



#238 - M&W 406 Detasseler (TR7642)

M&W 406 Detasseler (TR7642), gas engine, hydrostat transmission, 8 row Cutter head (TR7639), 11.2-28 tires, 2249 hours. Notes:



#239 - Detasseler Tires (TR7641)

Detasseler Tires (TR7641), 11.2-28 Tires/Rims. Notes:



#240 - Gehl Silage Wagon (TR7649)

Gehl Silage Wagon (TR7649), PTO Driven, 4 wheel gear. Notes:



#241 - Byron 1514 Dump Cart (TR7648)

Byron 1514 Dump Cart (TR7648), Electronic Scale, hydraulic, 520/85R38 tires. Notes:



#242 - Byron 1512 Dump Cart (TR7647)

Byron 1512 Dump Cart (TR7647), hydraulic, 520/85R38 tires. Notes:



#243 - Byron 1512 Dump Cart (TR7646)

Byron 1512 Dump Cart (TR7646), hydraulic, 520/85R38 tires. Notes:



#244 - Byron 1514 Dump Cart (TR7645)

Byron 1514 Dump Cart (TR7645), Electronic Scale, hydraulic, 24.5-32 tires. Notes:



#245 - Byron 1514 Dump Cart (TR7644)

Byron 1514 Dump Cart (TR7644), hydraulic, 24.5-32 tires. Notes:



#246 - Head Trailer (TR7633)

Head Trailer (TR7633), Detasseler head trailer, cutom built, tandem axle, Bumper hitch, (HT-3). Notes: NO TITLE.



#247 - Head Trailer (TR7634)

Head Trailer (TR7634), Detasseler head trailer, cutom built, tandem axle, Bumper hitch, (HT-4). Notes: NO TITLE.



#248 - Head Trailer (TR7652)

Head Trailer (TR7652), Detasseler head trailer, cutom built, tandem axle, Bumper hitch, (HT-1). Notes: NO TITLE.



#249 - Head Trailer (TR7653)

Head Trailer (TR7653), Detasseler head trailer, cutom built, tandem axle, Bumper hitch, (HT-2). Notes: NO TITLE.



#250 - 2012 B-B Gooseneck Trailer (TR7650)

2012 B-B Gooseneck Trailer (TR7650), tandem axle, Detasseler trailer, spring ride, ramps, slide outs, ST235-80R16 tires. Notes:



#251 - PDF 90 Detassler (TR7651)

PDF 90 Detassler (TR7651), gas engine, hydrostat transmission, 8 row cutter head, sel propelled, 1565 hours. Notes:



#252 - Propane Flamer (TR7654)

Propane Flamer (TR7654), pull type, double row. Notes:



#253 - Propane Flamer (TR7655)

Propane Flamer (TR7655), pull type, double row. Notes:



#254 - Hagie Detasseler (TR7656)

Hagie Detasseler (TR7656), Model 200, gas engine, 12.4-28 tires, hydrostat transmission, Hagie Puller heads, 2048 hours. Notes:



#255 - Hagie Detasseler (TR7658)

Hagie Detasseler (TR7658), Model 200, gas engine, 12.4-28 tires, hydrostat transmission, 6 row Puller heads, 1210 hours. Notes:



#256 - 2009 Homemade Pot-o-Pot Trailer (TR7657)

2009 Homemade Pot-o-Pot Trailer (TR7657), single axle, steel bed, bumper hitch, 5.30-12 tires, (TRLR-6601). Notes:



#257 - 1997 Beaver Creek Trailer (TR7659)

1997 Beaver Creek Trailer (TR7659), wood deck flatbed, tandem axle, spring ride transmission, fold down ramps, pintal hitch, electric winch, ST205/85D14.5 tires. Notes:



#258 - 2009 Homemade Trailer (TR7660)

2009 Homemade Trailer (TR7660), flatbed, single axle, bumper hitch, 5.30-12 tires, (TRLR-6602). Notes:



#259 - 2009 Homemade Trailer (TR7662)

2009 Homemade Trailer (TR7662), flatbed, single axle, bumper hitch, 5.30-12 tires, (TRLR-6603). Notes:



#261 - 2009 Homemade Trailer (TR7664)

2009 Homemade Trailer (TR7664), flatbed, single axle, bumper hitch, 5.30-12 tires, (TRLR-6605). Notes:



#262 - 1991 TPDDetasseler Trailer (TR7665)

1991 TPDDetasseler Trailer (TR7665), tandem axle, automatic slide outs, ball hitch, ST205/90.015 tires, (TRLR-6608). Notes:



#263 - Batco Under Car Conveyor (DR1540)

Batco Under Car Conveyor (DR1540), Belt, tube conveyor, hydraulic, portable, 15'. Notes:



#264 - Convey-All Under Car Conveyor (DR1541)

Convey-All Under Car Conveyor (DR1541), Belt, tube conveyor, hydraulic, portable, 15'. Notes:



#265 - 2001 JLG 002E2 Scissor Lift (NJP1396)

2001 JLG 002E2 Scissor Lift (NJP1396) Electric, Hard tire, 24 volt, Platform controls. Notes:



#266 - 2000 Wandas Car Trailer (NJP1397)

2000 Wandas Car Trailer (NJP1397), tandem axle, spring ride, ball hitch, 7x16, steel bed, fenders. Notes:



#268 - 2014 Chevrolet 1500 (NJP1395)

2014 Chevrolet 1500 (NJP1395), Silverado LT, gas engine, automatic transmission, Heat/AC, AM/FM CD player, 4x4, 4 door, P265/65R18 tires, bed liner, dual temperature control, heated seats, power windows/locks/mirrors, 100,144 miles. Notes:



#269 - 2013 Ford F-250 (TR7700)

2013 Ford F-250 (TR7700), Gas engine, AM/FM CD player, 4x4, Cruise, power windows/locks, 100205 miles. Notes:



#270 - John Deere 455 Spreader (TR7620)

John Deere 455 Spreader (TR7620), John Deere Model 455, Spreader, single axle, hydraulic, PTO. Notes:



#270A - 1998 Homemade Flatbed (TR7710)

1998 Homemade Flatbed (TR7710), is 18ft long and 6'4" between fenders. It has no ramps, mismatched 15" tires with ok tread, takes a 2" ball. Also the trailer is Black in color and has some rust. One of the boards is pulled up some in a corner but the top seems solid. New in 1998 called a Custom brand. Notes:



#271 - Skidloader Boss Vplow Attachment (PD1336)

Skidloader Boss Vplow Attachment (PD1336), 8 foot 2 inches, fresh paint. Notes:



#272 - Brand New Hawz Skidloader/Bobcat Tree Puller (PD1356)

Brand New Hawz Skidloader/Bobcat Tree Puller (PD1356). Notes:



#273 - Hawz Skidloader Heavy Duty Skeleton Rock Bucket (PD1347)

Hawz Skidloader Heavy Duty Skeleton Rock Bucket (PD1347), 3 inch spacing between Heavy Duty Tines, hardened cutting edges, perfect for digging and back dragging, heavy duty universal skid steer quick attach plate, 74 inch. Notes:



#274 - Brand New Hawz Skidloader/Bobcat Tree Puller (PD1340)

Brand New Hawz Skidloader/Bobcat Tree Puller (PD1340). Notes:



#275 - Brand New Hawz Skidloader/Bobcat Brush/Rock Grapples (PD1339)

Brand New Hawz Skidloader/Bobcat Brush/Rock Grapples (PD1339), very heavy built, 3 inch spacing between heavy duty tines, hardened cutting edges perfect for digging and back dragging, heavy duty universal skid steer quick attach plate, comes complete with hoses, fittings, and hydraulic line covers, 68 inch. Notes:



#276 - Brand New Hawz Skidloader/Bobcat Brush/Rock Grapples (PD1338)

Brand New Hawz Skidloader/Bobcat Brush/Rock Grapples (PD1338), very heavy built, 3 inch spacing between heavy duty tines, hardened cutting edges perfect for digging and back dragging, heavy duty universal skid steer quick attach plate, comes complete with hoses, fittings, and hydraulic line covers, 74 inch. Notes:



#277 - Brand New Hawz Skidloader/Bobcat Brush/Rock Grapples (PD1337)

Brand New Hawz Skidloader/Bobcat Brush/Rock Grapples (PD1337), very heavy built, 3 inch spacing between heavy duty tines, hardened cutting edges perfect for digging and back dragging, heavy duty universal skid steer quick attach plate, comes complete with hoses, fittings, and hydraulic line covers, 78 inch. Notes:



#278 - Hawz Skidloader Heavy Duty Skeleton Rock Bucket (PD1357)

Hawz Skidloader Heavy Duty Skeleton Rock Bucket (PD1357), 3 inch spacing between Heavy Duty Tines, hardened cutting edges, perfect for digging and back dragging, heavy duty universal skid steer quick attach plate, 84 inch. Notes:



#279 - Kubota ZD18 Zero Turn Mower (PD1327)

Kubota ZD18 Zero Turn Mower (PD1327), 18 HP 3 cylinder diesel engine, 60 inch deck, runs and mows good. Notes: Needs a little TLC.



#280 - Magnum 4000 Pressure Washer (PD1335)

Magnum 4000 Pressure Washer (PD1335), 4,000 psi, 3.5 GPM, 15HPengine, 350,000 BTU, temperature control, adjustable pressure control, 3/8 inch high pressure hose, gun, nozzles, 13 inch pneumatic tires. Notes:



#281 - Magnum 4000 Pressure Washer (PD1334)

Magnum 4000 Pressure Washer (PD1334), 4,000 psi, 3.5 GPM, 15HPengine, 350,000 BTU, temperature control, adjustable pressure control, 3/8 inch high pressure hose, gun, nozzles, 13 inch pneumatic tires. Notes:



#282 - Magnum 4000 Pressure Washer (PD1333)

Magnum 4000 Pressure Washer (PD1333), 4,000 psi, 3.5 GPM, 15HPengine, 350,000 BTU, temperature control, adjustable pressure control, 3/8 inch high pressure hose, gun, nozzles, 13 inch pneumatic tires. Notes:



#283 - 2015 Bobcat S510 Skid Steer (PD1329)

2015 Bobcat S510 Skid Steer (PD1329), 49HP Doosan Diesel engine, auxiliary hydraulics, hydraulic QA, hand and foot controls, heat, radio, 66 inch GP Bucket, brand new 10-16.5 tires, 6213 pound operating weight, 1650 pound lift capacity, 3692 hours. Notes:



#284 - Seed Tender Gravity Wagon (ME430)

Seed Tender Gravity Wagon (ME430), 200 bu. Gravity wagon with 13ft auger, retractable spout is 9ft, Briggs & Stratton 8HP motor, 11L-15SL 5 ply tires in good condition, no rust, always stored inside. Notes:



#285 - OMNI Multi-Oil Shop Boiler (ME431)

OMNI Multi-Oil Shop Boiler (ME431), OMNI waste oil boiler with OMNI flame control system, ASME relief valve, theraltimeter gauge, boiler drain, serviceable oil filter, 250,000 BTU/hr., 120V. Notes:



#286 - Bucket Caterpillar 941 (DL494)

Bucket Caterpillar 941 (DL494), 941 bucket Caterpillar, engine does not run. Notes:



#287 - Bayer RH 2000 Seed Treater (PD1355)

Bayer RH 2000 Seed Treater (PD1355), with seed wheel and surge hopper over seed wheel, treater was hooked to an OnDemand system, chemical atomizer, rotating drum, closed calibration, tank and pump system to treat various seed types, only used for one season, used for only 30,000 units. Notes: The spout and the red piece on the end are not included



#288 - John Deere 5020 Tractor (PD1343)

John Deere 5020 Tractor (PD1343), John Deere 7520 engine, 8 speed synchro transmission, new clutch, runs great. Notes:



#289 - 2002 Ford Excursion (PD1345)

2002 Ford Excursion (PD1345), 7.3L Powerstroke engine, remote start, heated leather seats, 264,000 miles, new alternator, starter, batteries, front end parts, brakes, and icp sensor, 140,000 miles on new tranny, has newer glow plugs and injectors starts good in the cold. Notes:



#290 - 1999 Dodge 3500 Extended Cab Service Truck (PD1344)

1999 Dodge 3500 Extended Cab Service Truck (PD1344), Cummins 24V Diesel engine, 6 speed manual transmission, Power everything, cruise control, tires are 80%, 4X4, A/C works, shows 234,249 miles. Notes:



#291 - 2013 John Deere 320D Skid Steer (PD1328)

2013 John Deere 320D Skid Steer (PD1328), 66HP John Deere diesel engine, auxiliary hydraulics, heat and air, radio, hand and foot controls, 72 inch GP bucket, 12-16.5 tires, 6435 pound operating weight, 1950 pound lift capacity, 510 hours. Notes:



#292 - 2015 Load Trail Tilt Bed Gooseneck Trailer (DL493)

2015 Load Trail Tilt Bed Gooseneck Trailer (DL493), 34 ft, 2 - 10,000# axles, electric brakes, front toolbox, side toolbox, electric over hydraulic lift, winch, good brakes and tires. Notes:



#293 - 2014 Roadmaster Belly Dump Trailer (ED920)

2014 Roadmaster Belly Dump Trailer (ED920), trailer is a 50 foot triple axle with air ride and air lift axle on 3rd axle, has a sliding tarp, button gate controls on drivers side of trailer that can be used for dumping asphalt, gates can also be controlled from the cab of the truck, brakes are like new and tires are excellent, 445/50 22.5 on main axles, 255/70 22.5 on lift axle, trailer is in excellent condition and primarily used for asphalt. Notes:



#295 - 2005 Volvo (DL472)

2005 Volvo (DL472), D12 Volvo motor, 13 speed transmission, sleeper, Michelin tires 11R22.5, aluminum rims, 3:58 rear ends, newer head & injectors, shows 1.2 million miles. Notes:



#296 - Meters (PZ1480)

Meters (PZ1480), 7 - Veeder Root Meters. Notes:



#297 - Meter/Motor/Pump (PZ1481)

Meter/Motor/Pump (PZ1481), Veeder Root meter, Leeson 5 hp electric motor, Flomax 8 pump, stand. Notes:



#298 - Case 1840 Skid Steer (PD1326)

Case 1840 Skid Steer (PD1326), 4 cylinder Case diesel engine, 50HP, direct fuel injection, weight is 5250 pounds, tires are 7X15.6PR, hydraulic system, Notes:



#299 - Meter/Motor/Pump (PZ1483)

Meter/Motor/Pump (PZ1483), FPP meter, Baldor 5 hp electric motor, Scot pump, stand. Notes:



#300 - Motor/Pump (PZ1482)

Motor/Pump (PZ1482), Baldor 5 hp electric motor, John Blue pump. Notes:



#301 - Meter/Motor/Pump (PZ1484)

Meter/Motor/Pump (PZ1484), Veeder Root meter, Baldor 5 hp electric motor, pump. Notes:



#302 - Motor/Pump (PZ1485)

Motor/Pump (PZ1485), Baldor 5 hp electric motor, pump. Notes:



#303 - Motor/Pump (PZ1486)

Motor/Pump (PZ1486), Baldor 5 hp electric motor, Scot pump. Notes:



#304 - Motor/Pump (PZ1487)

Motor/Pump (PZ1487), Baldor 5 hp electric motor, Scot pump. Notes:



#305 - Motor/Pump (PZ1488)

Motor/Pump (PZ1488), Electric motor, Scot pump. Notes:



#307 - Blu-Jet Landwalker Anhydrous Machine (AL662)

Blu-Jet Landwalker Anhydrous Machine (AL662), 42.5', 17 shank with rolling cutters, Yetter covering disks, walking tandems on main frame and wings, CDS impelacone flow divider, new style Blu-Jet hitch, dual Hiniker heat exchangers with Hiniker 8150 monitor. Notes: Spare parts are included.



#308 - (5) Five 1000/50R25 Floater Tires (AL661)

(5) Five 1000/50R25 Floater Tires (AL661), three of these tires just came off of a machine. Notes:



#309 - 24 SureVac Row Shut Offs (ME432)

24 SureVac Row Shut Offs (ME432), (24) electric row shut offs for a John Deere planter, only used 2 seasons. Notes:



#310 - Pallet of Misc. Wiring and Cables for Planter (ME434)

Pallet of Misc. Wiring and Cables for Planter (ME434), pallet contains John Deere harness and height switch, Ag Leader shut offs, hydro drive control cable, John Deere harness for seed tube, height sensor and lights, hydro drive wires and John Deere harness to row sensors. Notes:



#312 - 2010 KBH Trailer (DR1765 Unit 1326)

2010 KBH Trailer (DR1765 Unit 1326), 26 ton hydraulic stainless steel fertilizer tender trailer, hopper vibrators, self contained hydraulics, diesel power unit shows 572 hours, rear auger, roll tarp, tandem axle gear, 255/70R22.5 tires. Notes: Rear auger needs work, knuckle keeps breaking.



#313 - 2010 KBH Trailer (RMC0291 Unit 1335)

2010 KBH Trailer (RMC0291 Unit 1335), 26 ton hydraulic stainless steel fertilizer tender trailer, hopper vibrators, self contained hydraulics, diesel power unit, rear auger, roll tarp, tandem axle gear, 255/70R22.5 tires. Notes:



#314 - 2010 KBH Trailer (RMC0294 Unit 1332)

2010 KBH Trailer (RMC0294 Unit 1332), 26 ton hydraulic stainless steel fertilizer tender trailer, hopper vibrators, self contained hydraulics, diesel power unit, rear auger, roll tarp, tandem axle gear, 255/70R22.5 tires. Notes: Suspension is pretty shot. This trailer will need HAULED.



#315 - 2006 KBH Trailer (RMC0293 Unit 3081)

2006 KBH Trailer (RMC0293 Unit 3081), 26 ton hydraulic stainless steel fertilizer tender trailer, hopper vibrators, self contained hydraulics, diesel power unit, rear auger, roll tarp, tandem axle gear, 255/70R22.5 tires. Notes: Suspension is pretty shot. This trailer will need HAULED.



#316 - Zuidberg 3pt Hitch (DL496)

Zuidberg 3pt Hitch (DL496), Zuidberg 11,000 lbs. lift capacity, 2 point linkages, vendor part# 6050515A. Notes:



#317 - Zuidberg 1000 RPM PTO (DL497)

Zuidberg 1000 RPM PTO (DL497), Zuidberg 1000 RPM PTO with torsion damper. Notes:



#318 - New Holland Cab (DL498)

New Holland Cab (DL498), New Holland Chopper / Harvester cab, brand new, model FR500. Notes:



#319 - 1994 Ford Bronco (CP1115)

1994 Ford Bronco (CP1115), gas engine, NON RUNNER, automatic transmission, (Tranny needs rebuilt), 4X4. Notes: This is a NON runner, will need winched onto trailer.



#320 - 1989 Kenworth T600A (JJ123)

1989 Kenworth T600A (JJ123), 425 B Model Cat, 15 Speed Transmission, 295/75/22.5 On the Drives and Steers, 11r22.5 on the Pusher, 1989 Kenworth T600A, New 15 Speed Transmission With Less Than 5,000 Miles, 425 B CAT Engine, 3rd Axle Air Up and Down with Convey-All CST1834, 3 Compartment Seed Tender, Electric Tarp, Has only had seed in it, shows 150,283 miles. Notes: Has NEW 15 Speed Transmission with less than 5,000 miles.



#321 - 1010 Gallon Schaben Tank (AL672)

1010 Gallon Schaben Tank (AL672), on skid with inductor cone, motor is free but needs work, pump has been rebuilt. Notes:



#322 - 1010 Gallon Schaben Tank (AL673)

1010 Gallon Schaben Tank (AL673), on skid with inductor cone, motor and pump work. Notes:



#323 - (9) Nine Red Round 120 Gallon Bulk Tanks (AL674)

(9) Nine Red Round 120 Gallon Bulk Tanks (AL674), model 120, all have free motors, and are equipped with meters. Notes:



#324 - (3) Three Green Round 120 Gallon Bulk Tanks (AL675)

(3) Three Green Round 120 Gallon Bulk Tanks (AL675), all have free motors. Notes:



#325 - (3) Three Dd6 Drive Units Bulk Tank Pumps (AL671)

(3) Three Dd6 Drive Units Bulk Tank Pumps (AL671), model E1-12, S/N: Serial Numbers 142732, 952228, 2605530. Notes:



#326 - John Deere Display (PZ1565)

John Deere Display (PZ1565), John Deere green star display box. Notes:



#327 - 24 Amvac Smart Boxes (PD1367)

24 Amvac Smart Boxes (PD1367), Amvac SmartBox system, came from John Deere 1770NT 24 row CCS planter, everything works great, haven't used in last 3 years, only 4 years of use. Notes:



#328 - 1989 Mack Turbo Intercooler Truck (PZ9407)

1989 Mack Turbo Intercooler Truck (PZ9407), diesel engine, 10 speed transmission, heat, Am/Fm cassette radio, single axle, 11R22.5 tires, shows 440,780 miles. Notes: Runs and drives. NEW batteries, NEW brake lights, NEW brake lines, NEW head lights, NEW master cylinder.



#329 - Wacker Neuson WL36 (DR1766 Unit 12419)

Wacker Neuson WL36 (DR1766 Unit 12419), payloader, diesel engine, NON RUNNER, shuttle shift transmission, ROPS cab, joystick controls, front quick tach bucket. Notes: This unit does NOT RUN.



#330 - Tandem Disc (DR1683)

Tandem Disc (DR1683), 8' 3 point mount tandem disc. Notes:



#332 - Buzz Saw (DR1685)

Buzz Saw (DR1685), buzz saw for mount, has pulley drive and blade w/exist table. Notes:



#335 - Chisel (DR1688)

Chisel (DR1688), 3 point mount chisel plow. Notes:



#336 - Snap Couple (DR1690)

Snap Couple (DR1690), Allis Chalmers implement snap coupler. Notes:



#337 - Harrow (DR1691)

Harrow (DR1691), rear 3 point mount harrow. Notes:



#338 - Blade (DR1692)

Blade (DR1692), rear 3 point blade, 6'. Notes:



#339 - Woods Blade (DR1693)

Woods Blade (DR1693), model RB-7, rear mount blade 7' manual adjustable. Notes:



#341 - Gyro Mower (DR1695)

Gyro Mower (DR1695), 6' pull type gyro mower, hydraulic lift. Notes:



#344 - Allis Chalmers Fenders (DR1717)

Allis Chalmers Fenders (DR1717), matched pair of steel fenders for Allis Chalmers 7000 series tractor. Notes:



#345 - Century Sprayer (DR1719)

Century Sprayer (DR1719), Eliminator model hooded sprayer, 6 row, 300 gallon poly tank, dual tip per row. Notes:



#346 - Allis Chalmers 324 Header (DR1720)

Allis Chalmers 324 Header (DR1720), 24' platform header, full bottom rock plate, hydraulic fore/aft. Notes:



#347 - Bale Feeders (DR1699)

Bale Feeders (DR1699), (3) 2 piece bale feeders. Notes:



#348 - Loading Chute (DR1701)

Loading Chute (DR1701), portable loading chute, good floor, good sides, adjustable height, removable tongue, all steel frame. Notes:



#350 - Linn Livestock Panels (DR1703)

Linn Livestock Panels (DR1703), (20), 14' Linn panels, 6 bar, dual pin ends, single axle transport gear. Notes:



#351 - Feed King Feeder (DR1704)

Feed King Feeder (DR1704), dual side portable creep feeder, 2 ton capacity, creep fence, single axle gear, good feed trays and adjustable. Notes:



#352 - Livestock Panels (DR1705)

Livestock Panels (DR1705), (8) 12' panel gates, 1" 6 bar, dual end pins. Notes:



#353 - Hay Feeder (DR1706)

Hay Feeder (DR1706), 16' steel hay feeder. Notes:



#354 - Livestock Panels (DR1707)

Livestock Panels (DR1707), (18) 12' square tube livestock panels, 6 bar, dual end pins. Notes:



#355 - Linn Working Tub (DR1708)

Linn Working Tub (DR1708), steel round pen working tub, dual side open, drop down sides, preg extension, Fore Most head gate. Notes:



#357 - Livestock Panels (DR1710)

DR1710, (7) 12' 6 bar, dual end pins, 1 walk thru gate. Notes:



#358 - Livestock Panels (DR1711)

Livestock Panels (DR1711), (9) 12' 6 bar livestock panels, dual end pins. Notes:



#359 - Feed Bunks (DR1714)

Feed Bunks (DR1714), (3) steel bunks, 2 - 12', 1 - 8', all steel bunks. Notes:



#361 - Windbreak Panels (DR1718)

Windbreak Panels (DR1718), (17) 18' steel windbreak panels, 36" wide, NOT Tin heavier than tin. Notes: The gear is a "take it or leave" which ever you wish.



#362 - John Deere 272 (DR1689)

John Deere 272 (DR1689), rear 3 point mount grooming mower, 540 PTO drive. Notes:



#363 - John Deere 7000 (DR1721)

John Deere 7000 (DR1721), 6 row 30" planter, front coulters, hydraulic markers, missing one press wheel. Notes:



#364 - Fuel Barrel (DR1712)

Fuel Barrel (DR1712), 500 gallon gasoline fuel barrel, sight gauge, electric pump, handle has full trip. Notes:



#365 - Fuel Barrel (DR1713)

Fuel Barrel (DR1713), 500 gallon diesel fuel barrel, sight gauge, electric pump, handle has full trip. Notes: Pump is pretty new.



#368 - Utility Trailer (DR1698)

Utility Trailer (DR1698), single axle utility trailer, 5' X 14', rear fold down ramp, wood deck, side mount storage & tool box, 205/75R15 tires. Notes: NO TITLE.



#370 - 1996 32ft Featherlight Gooseneck Trailer (ME435)

1996 32ft Featherlight Gooseneck Trailer (ME435), gooseneck trailer total length is 32ft, bed is 26.5ft., beaver tails are 5 ft, tandem axle, spring suspension, electric breaks, NEW tires, NEW deck, NEW lights, good solid trailer, road ready. Notes:



#371 - Coulters Openers (DR1677)

Coulters Openers (DR1677), (16) ripple coulters mounted on brackets. Notes:



#372 - Coulters Openers (DR1678)

Coulters Openers (DR1678), (16) ripple coulters mounted on brackets. Notes:



#373 - Coulters Openers (DR1679)

Coulters Openers (DR1679), (16) NEW ripple coulters and brackets. Notes:



#374 - Coulters Openers (DR1680)

Coulters Openers (DR1680), (16) NEW ripple coulters and brackets. Notes:



#375 - Coulters Blades (DR1681)

Coulters Blades (DR1681), (32) NEW ripple coulters blades. Notes:



#376 - Quick Hitch (DR1682)

Quick Hitch (DR1682), 3 point quick hitch and 3rd link came from Case IH tractor. Notes:



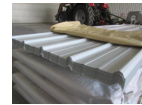
#377 - Metal Siding/Roofing (DR1572)

Metal Siding/Roofing (DR1572), NEW (40) sheets, American made, White color, 10'-4" long X 36" overlap coverage, Premium Pro Rib Profile style, 29 gauge. ALWAYS stored inside. Meets all USA building material engineering codes for Tested Tolerances for wind & snow. USA stamped seal of approval documentation on all products. Notes: Loadout IS available with flexible appointments.



#378 - Metal Siding/Roofing (DR1573)

Metal Siding/Roofing (DR1573), NEW (40) sheets, American made, White color, 10'-4" long X 36" overlap coverage, Premium Pro Rib Profile style, 29 gauge. ALWAYS stored inside. Meets all USA building material engineering codes for Tested Tolerances for wind & snow. USA stamped seal of approval documentation on all products. Notes: Loadout IS available with flexible appointments.



#379 - Metal Siding/Roofing (DR1574)

Metal Siding/Roofing (DR1574), NEW (40) sheets, American made, White color, 10'-4" long X 36" overlap coverage, Premium Pro Rib Profile style, 29 gauge. ALWAYS stored inside. Meets all USA building material engineering codes for Tested Tolerances for wind & snow. USA stamped seal of approval documentation on all products. Notes: Loadout IS available with flexible appointments.



#380 - Metal Siding/Roofing (DR1575)

Metal Siding/Roofing (DR1575), NEW (30) sheets, American made, White color, 14'-4" long X 36" overlap coverage, Premium Pro Rib Profile style, 29 gauge. ALWAYS stored inside. Meets all USA building material engineering codes for Tested Tolerances for wind & snow. USA stamped seal of approval documentation on all products. Notes: Loadout IS available with flexible appointments.



#381 - Metal Siding/Roofing (DR1576)

Metal Siding/Roofing (DR1576), NEW (30) sheets, American made, White color, 14'-4" long X 36" overlap coverage, Premium Pro Rib Profile style, 29 gauge. ALWAYS stored inside. Meets all USA building material engineering codes for Tested Tolerances for wind & snow. USA stamped seal of approval documentation on all products. Notes: Loadout IS available with flexible appointments.



#382 - Metal Siding/Roofing (DR1577)

Metal Siding/Roofing (DR1577), NEW (30) sheets, American made, White color, 14'-4" long X 36" overlap coverage, Premium Pro Rib Profile style, 29 gauge. ALWAYS stored inside. Meets all USA building material engineering codes for Tested Tolerances for wind & snow. USA stamped seal of approval documentation on all products. Notes: Loadout IS available with flexible appointments.



#383 - Metal Siding/Roofing (DR1578)

Metal Siding/Roofing (DR1578), NEW (30) sheets, American made, Burnish Slate color, 16' long X 36" overlap coverage, Premium Pro Rib Profile style, 29 gauge. ALWAYS stored inside. Meets all USA building material engineering codes for Tested Tolerances for wind & snow. USA stamped seal of approval documentation on all products. Notes: Loadout IS available with flexible appointments.



#384 - Metal Siding/Roofing (DR1579)

Metal Siding/Roofing (DR1579)NEW (30) sheets, American made, Burnish Slate color, 16' long X 36" overlap coverage, Premium Pro Rib Profile style, 29 gauge. ALWAYS stored inside. Meets all USA building material engineering codes for Tested Tolerances for wind & snow. USA stamped seal of approval documentation on all products. Notes: Loadout IS available with flexible appointments.



#385 - Metal Siding/Roofing (DR1580)

Metal Siding/Roofing (DR1580), NEW (30) sheets, American made, Burnish Slate color, 16' long X 36" overlap coverage, Premium Pro Rib Profile style, 29 gauge. ALWAYS stored inside. Meets all USA building material engineering codes for Tested Tolerances for wind & snow. USA stamped seal of approval documentation on all products. Notes: Loadout IS available with flexible appointments.



#386 - 2004 Ford Crown Victoria (DR1599)

2004 Ford Crown Victoria (DR1599), car should run enough to get on a trailer, V-8 gas engine, automatic transmission, AM/FM radio, air conditioning, cruise control, power windows & locks, shows 171,993 miles. Notes:



#387 - 2010 Ford Crown Victoria (DR1600)

2010 Ford Crown Victoria (DR1600), car should run enough to get on a trailer, V-8 gas engine, automatic transmission, AM/FM radio, air conditioning, cruise control, power windows & locks. Notes:



#388 - 1990 Ford L8000 (DR1601)

1990 Ford L8000 (DR1601), diesel engine, 13 speed transmission, tandem axle full screw, Peabody steel dump box & hoist, rear pintle hitch, front hydraulic plow bracket, air brakes, 24.5 tires, shows 253,208 miles. Notes: Plow sells separately on this auction.



#389 - Radios (DR1589)

Radios (DR1589), most for parts, (6) boxes of assorted radios, chargers and coax. Notes:



#390 - Exercise Equipment (DR1585)

Exercise Equipment (DR1585), institutional exercise machine, pedestal stand. Notes: Thurston County NE has a new Law Enforcement Center, these items are from the old facility.



#391 - Safety Guards (DR1586)

Safety Guards (DR1586), (3) law enforcement vehicle rear passenger guards. Notes: Thurston County NE has a new Law Enforcement Center, these items are from the old facility.



#392 - Benches (DR1587)

Benches (DR1587), (3) 5' steel benches, rubber coated seats, mounting stands. Notes: Thurston County NE has a new Law Enforcement Center, these items are from the old facility.



#393 - Vulcan Stove (DR1588)

Vulcan Stove (DR1588), 6 burner gas range. Notes: Thurston County NE has a new Law Enforcement Center, these items are from the old facility.



#394 - Bookshelves (DR1590)

Bookshelves (DR1590), (2) wood book shelves, 6'X3' and 5'X4'. Notes: Thurston County NE has a new Law Enforcement Center, these items are from the old facility.



#395 - File Cabinets (DR1591)

File Cabinets (DR1591), (3) 4 drawer metal file cabinets. Notes: Thurston County NE has a new Law Enforcement Center, these items are from the old facility.



#396 - Wood Benches (DR1592)

Wood Benches (DR1592), (2) 8' wood benches, 1 has minor end damage. Notes: Thurston County NE has a new Law Enforcement Center, these items are from the old facility.



#397 - Picnic Tables (DR1593)

Picnic Tables (DR1593), (3) picnic tables, 1 is wood w/one side bench, 2 are all steel, 2 pedastal seats. Notes: Thurston County NE has a new Law Enforcement Center, these items are from the old facility.



#398 - Time Clock/Gun Safe (DR1594)

Time Clock/Gun Safe (DR1594), electric time clock and assorted computers, (2) locking hand gun safe. Notes: Thurston County NE has a new Law Enforcement Center, these items are from the old facility.



#399 - Lockers (DR1595)

Lockers (DR1595), 6 bay lockers, (2) 4 bay lockers, large locking cage. Notes: Thurston County NE has a new Law Enforcement Center, these items are from the old facility.



#400 - Lockers (DR1596)

Lockers (DR1596), 6 bay lockers, (3) 6 bay lockers. Notes: Thurston County NE has a new Law Enforcement Center, these items are from the old facility.



#401 - Washer/Dryer (DR1597)

Washer/Dryer (DR1597), Maytag washer and dryer. Notes: Thurston County NE has a new Law Enforcement Center, these items are from the old facility.



#402 - Gun Safe (DR1598)

Gun Safe (DR1598), large standing gun safe, bottom door lock. Notes: Thurston County NE has a new Law Enforcement Center, these items are from the old facility.



#403 - Snow Plow (DR1602)

Snow Plow (DR1602), front mount hydraulic snow plow, poly lined blade. Notes: Plow came off truck that sells on this auction.



#404 - Receiver Hitch (DR1759)

Receiver Hitch (DR1759), rear receiver hitch came off 2015 Ford pickup. Notes:



#405 - Dewalt Drill (DR1760)

Dewalt Drill (DR1760), 9.6 volt cordless drill, 2 batteries, NO CHARGER. Notes:



#406 - Pro Tech Headache Rack (DR1761)

Pro Tech Headache Rack (DR1761), aluminum headache rack, lockable storage compartment. Notes:



#407 - Poly Saddle Tank (DR1762)

Poly Saddle Tank (DR1762), 200 gallon poly liquid saddle tank, on legs. Notes:



#408 - A-Frame Hoist (DR1768)

A-Frame Hoist (DR1768), 1.5 ton chain hoist, castered A frame. Notes:



#409 - Bobcat Grapple (DR1767)

Bobcat Grapple (DR1767), Bobcat brand hydraulic grapple bucket. Notes:



#412 - Starfire ITC Globe (PD1377)

Starfire ITC Globe (PD1377). Notes:

