

# March 7 – Annual Machinery Auction- Kearney, Nebraska

## MARSHALL'S ABSOLUTE AUCTION

TUESDAY MARCH 7, 2017 – 9:00 A.M.  
KEARNEY, NEBRASKA

**AUCTION SITE:** Buffalo County Fairgrounds located from Hwy. 30 and Ave. N (Peavey Grain) 3/4 miles north on Ave. N.

PLAN TO ATTEND THIS ABSOLUTE AUCTION – EVERYTHING SELLS TO THE HIGHEST BIDDER.  
NO MINIMUMS

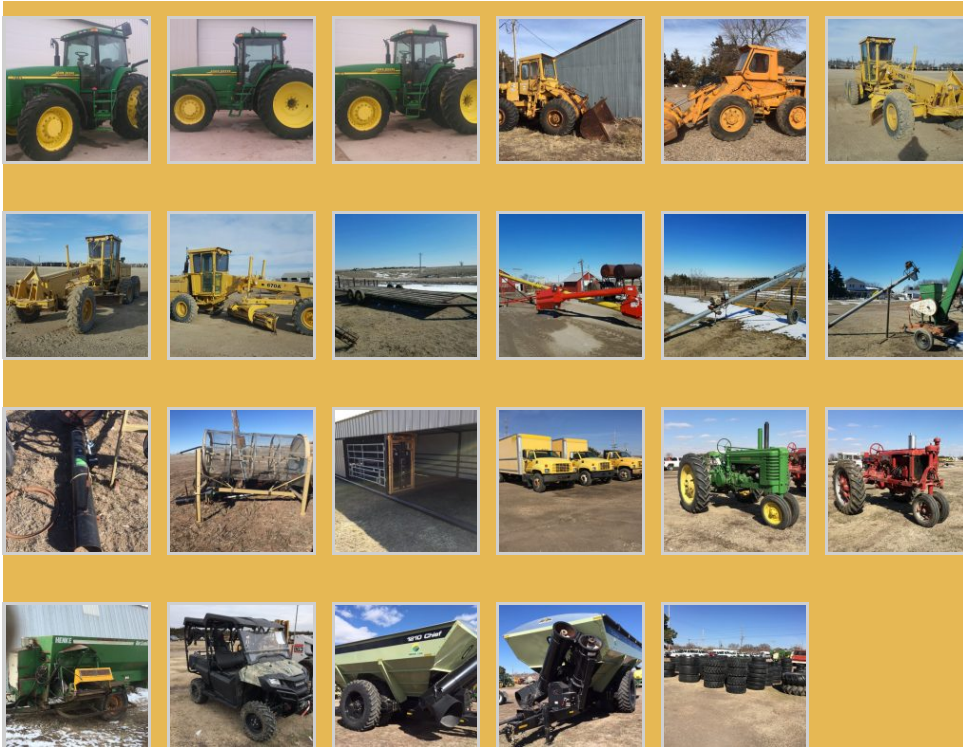
**LIVE ON LINE BIDDING:** Advanced registration required.

**COME PREPARED FOR TWO AUCTION RINGS**

**CHECK IN OF ADDITIONAL ITEMS FOR MARCH 7TH AUCTION IS CLOSED.**

**CALL SOON TO CONSIGN FOR AUGUST FALL AUCTION. THANK YOU.**

### RECENT ADDITIONS



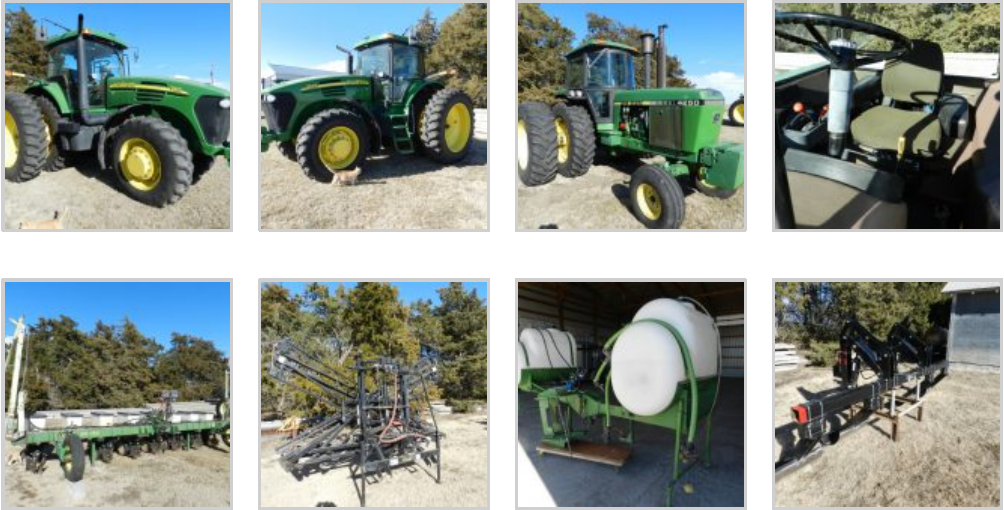
Orthman 1210 grain cart, 1,250 bu. w/duals  
2002 JD 8110 MFWD tractor, 4 hyd. outlets, 540-1000 PTO,

Case W7 loader  
Hough H-65 loader  
Snowco Grain Cleaner

3 pt. HD 14150 lift w/quick hitch, w/duals, cab ac/heat comfort  
 pkg., 480/80R Michelin tires w/duals, 380/85R34 Michelin tires  
 w/fenders, 8 ft. weights, 450 lb. rear weights, 10" dual spacers,  
 118.5" rear axle  
 2016 Honda Pioneer SXS700 ATV, power steering, front & rear boot guards, hard roof, clean air snorkel, 2 piece windshield, 4,500 lb. warn winch, 16.6 hrs., 88 miles, flip up rear seats  
 2000 F250 Lariat Super Duty truck, V10 Tritan, 4 door, gas  
 2002 F450 Super Duty truck w/utility box, 4 door, diesel  
 2000 F350 Super Duty truck, V8 Tritan, extended cab w/utility box  
 Sharp enclosed trailer  
 12' enclosed aluminum trailer  
 8' enclosed trailer  
 Several pieces 8" steel pipe  
 3010 Tractor  
 Grapple fork for 3010 tractor  
 Conoco 1000 gal. fuel tank  
 Mayrath auger, SN 906542  
 Ford Tractor  
 Roller Mill  
 Post hole digger w/9" & 6" auger, power shaft 6' blade  
  
 Calving Barn, 12 ft. by 40 ft.  
 Case IH 1020 20ft flex head, poly apron, 12 row, hooded sprayer  
 Caterpillar forklift, propane  
 1946 JD A tractor, narrow front  
 1936 Farmall F-20 tractor  
 Portable mineral feeder & insecticide application trailer  
 GMC C6500 Tool Van  
 2000 GMC 24" tool van  
 1998 GMC flatbed truck  
 Bobcat open sweeper broom  
 2005 Isuzu 21kw generator  
 Heinke 300 feed wagon  
 Blu Jet 12r liquid applicator  
 Helicopter tanks  
 Honda Foreman 4-wheeler  
 JD 176 lawn tractor  
 Troy built chipper shredder  
 JD tandem disc, 14 ft.  
 Hobbs flatbed trailer, w/(2) 2500 gal. tanks  
 Parker gravity box wagon w/auger, Honda elec. start,  
 -gas motor & hyd. pump  
 Westfield Auger 10" by 71 ft. w/low profile swing hopper,  
 -only 50,000 bu.  
 Hutchinson Auger 6" by 30 ft. w/240v electric motor  
 4" pump w/Ford Engine  
 6" Thomson pump w/Duetz engine  
 (4) white pickup fuel tanks  
 Sunco Fertilizer openers  
 (2) 55 gal. tanks  
 Planter markers  
 Ratchet tie downs for semi  
 Gage wheels  
 Roller rack for saw  
 6 ton floor jack  
 Olsen 100 band saw  
 20 ton press  
 Ferguson tractor  
 2 bale forks  
 Shredder  
 Hawkins unit  
 Field cultivator  
 Pivot track filler  
 3 pt. mower  
 Gopher machine  
 2 rear tractor tires  
 Quick hitch  
 JD fenders  
 JD category 3 quick hitch  
 Orthman 3 pt. track closer  
 JD 48" set of forks  
 Bison 9' blade, hyd.  
 Land Pride 7' blade, hyd.  
 Reif 8' snow bucket  
 35' field cultivator  
 JD LT 166 riding mower  
 Ground Compactor  
 Power trowel  
 Saddle tanks for JD 7800  
 Wind deflector for semi  
 1999 Ford F-350 Super Duty pickup  
 Flatbed trailer  
 200 ft. poly pipe  
 PTO pump  
 Piston pump  
 Air Compressor  
 PK 3 pt. sprayer w/60' boom  
 1993 Ford F-155 pickup  
 1971 Chevrolet H19  
 8 pivot tires & rims  
 Lundell pull type stalk shredder  
 Buffalo guidance system  
 Radiator for 454 Chevrolet engine  
 Rolling harrow

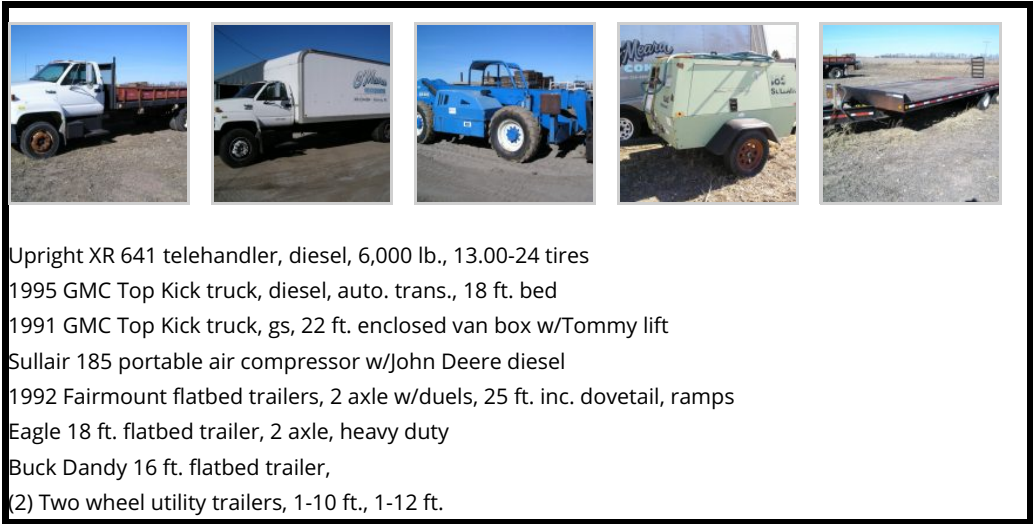
Henke roller mill 18" w/elevator and 240v electric motor  
 JD lowboy trailer, 8 ft. by 24 ft., bumper pull  
 Pipe Trailer 10 ft. wide, near new  
 Pipe Trailer 8 ft. wide  
 960 ft. Rainway 8" aluminum pipe, 20" gates  
 750 ft. Kroy 8" aluminum pipe, 20" gates  
 840 ft. Hastings 8" aluminum pipe, 20" gates

**RETIREMENT - RANDALL ALBERS 308-470-0246**



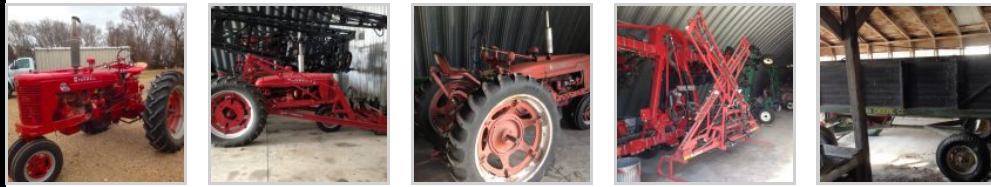
2004 JD 7920 tractor MFWD, IBT trans., 12 ft. wts., 4 hyd., quick hitch, 480/80R46 rear tires & duals, SN 020449  
 1983 JD 4250 tractor, 16 spd. power shift, 14 ft. wts., 18.4-38 tires & duals, 2 hyd., rear wheel wts., SN P002524  
 JD 7100 bar w/Kinzie planter units, 8r30" precision finger pickup, Sunco openers, Orthman markers, JD hyd. drive  
 Snyder 260 gal. poly tanks w/bracket, stands, & plumbing, fits JD 7920  
 Patriot stalk stomper  
 Bestway 60 ft. X-fold boom sprayer, 3 pt.

**O'MEARA CONCRETE, OWNER, Ph. 308-234-6884**



Upright XR 641 telehandler, diesel, 6,000 lb., 13.00-24 tires  
 1995 GMC Top Kick truck, diesel, auto. trans., 18 ft. bed  
 1991 GMC Top Kick truck, gs, 22 ft. enclosed van box w/Tommy lift  
 Sullair 185 portable air compressor w/John Deere diesel  
 1992 Fairmount flatbed trailers, 2 axle w/duals, 25 ft. inc. dovetail, ramps  
 Eagle 18 ft. flatbed trailer, 2 axle, heavy duty  
 Buck Dandy 16 ft. flatbed trailer,  
 (2) Two wheel utility trailers, 1-10 ft., 1-12 ft.

**Jim and Mary Paulsen - ph. 308-991-8531**



1954 MTA Farmall tractor, less than 35 hrs. on new sleeves, pistons, and brakes, narrow front, one owner

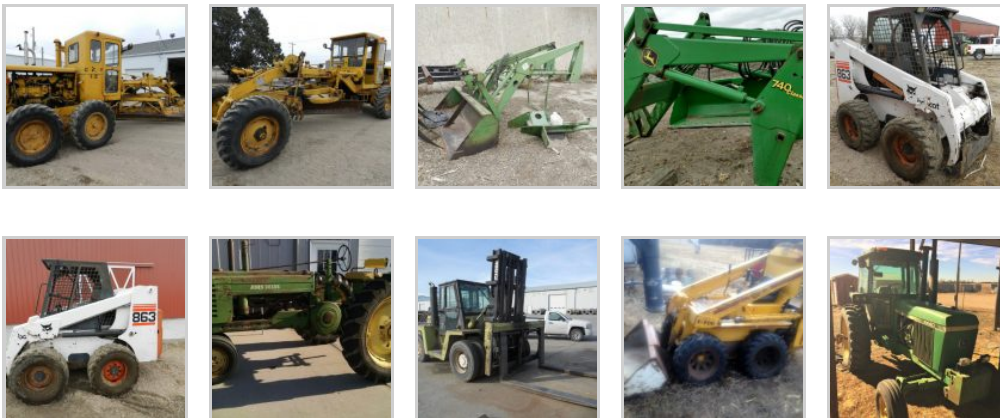
Farmall H tractor, live hydraulic, narrow front, excellent rubber, w/ vintage McCormick Loader

Farmall H tractor, auger tractor, narrow front, good rubber

Century X-Boom sprayer, 60 ft.

JD Wagon, original wood box, Midwest hoist, 8 ply tires

## TRACTORS, LOADERS



Case IH 1566, 7663 hrs., SN 2650125U008765

Allis Chalmers 190 XT, engine # 2D 06797, 5200 hrs.

1948 JD B tractor, narrow front, new rear tires, new mag & generator

1982 JD 4440 tractor, quad range, 3 hyd. w/duals & hubs

JD 158 Loader w/7 ft. bucket & grapple

JD 740 Classic loader w/8 ft. bucket & grapple, fits JD 7510 or 10 series tractors

Hyster H50 fork lift, propane, 3 stage lift

1999 Bobcat 863 F series skid steer loader, diesel, only 1304 hrs., SN 514428572

1987 Clark forklift, 8 ft. forks, 144" lift ht., cap. 18,925 at 24", Detroit diesel, 4 cyl. 2 cycle, Trans-Hydratorck powershift, 3 forward spds., 3 reverse spds., air brakes, 11R-22.5 tires, SN Y1625-01-6585

1974 Clark forklift HY160, 8 ft. & 4 ft. forks, 144" lift ht., sideshift, cap. 16,000 at 24", Detroit diesel, 4 cyl. 2 cycle, Trans Hydracool clutch, 5 forward spds., 5 reverse spds., hyd. brakes, 10.00-2D tires, SN HY1625-115-2317

Rounder Hydrostatic skid steer loader L-100

1959 Caterpillar 12 road grader, diesel w/gas pony motor, SN 8T8410

Kubota tractor, model L285, w/loader, 4 cyl., diesel, 30h, runs good

## TRUCKS





2005 Peterbilt truck, ISM Cummins engine, Allison automatic transmission, 6,568 hr. on truck, w/new tires, w/ROTO-MIX 600-16 feed box, completely reconditioned w/new auger, chains, bearings, stainless steel liner, s/Digi-Star scale

2004 IHC 7300 truck w/DT 466 engine, Allison automatic trans., ac, w/ROTO-Mix 420-12 feed box, completely reconditioned, new augers, stainless steel liner, chains & bearings, new tires, w/Digi-Star scale

1990 Ford Aeromax 9000 twin screw semi truck, 9 spd., Cummins engine, day cab, 517,000 miles

1989 Ford Aeromax 9000 twin screw semi truck, 9 spd., Cummins engine, day cab, 490,000 miles

1988 White Volvo twin screw semi truck w/sleeper, Cummins 350 & 9 sp. trans., new brakes

1979 GMC C6500 truck, V8 engine, 5 & 2 spd. trans., gas, tag axle w/20 ft. stakeless side box, rollover tarp, cargo gates, new box floor & Harsh hoist

1975 IHC Loadstar 1700 truck, gas, 5 & 2 spd. trans., tandem tag axle, w/22 ft. box and double cylinder hoist & Shurlok roll over tarp, 89,178 miles

1973 Ford F700 dump truck, gas, single axle w/duals, manual trans.

1977 Ford LN800 truck, 20 ft. steel box, lift tag axle

1975 Chevrolet C65 truck, 20 ft. steel box, tag axle, 427 V-8

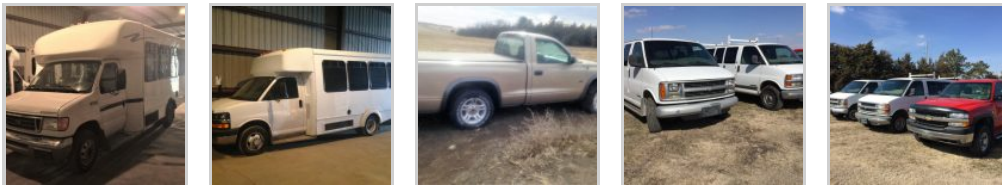
1973 GMC truck, Detroit diesel, 22 ft. steel box, tag axle

1975 Ford C700 truck, 16 ft. wooden box

1968 Chevrolet truck, 16 ft. wooden box

Several reconditioned truck tires

## PICKUPS, VEHICLES



Dodge Sprinter 3/4 ton cargo van, diesel, automatic

Chevrolet Savanna 3/4 ton cargo van, gas, automatic

2008 Chevrolet Express G3500 Cutaway bus, gas, p.s., p.b., Braun Wheelchair lift, 14 passenger or 12 passenger + 2 wheelchairs, 126,149 miles, rear A/C needs work, VIN 1GBJG31KX81184875

2006 Ford E450 Cutaway bus, gas, p.s., p.b., Braun Wheelchair lift, 12 passenger + 2 wheelchairs, 146,073 miles, transmission & parking brake need repair, VIN 1FDXE45S26DA25190

2002 GMC K1500 pickup, Sierra pkg., 5.3L V-8, 4x4, 107,000 miles

2002 Dodge Dakota, automatic, tan

2002 Chevrolet 2500 HD regular cab pickup, 6.0 liter gas, auto trans., 4x4, 136,000 miles

2001 Chevrolet Express 3500 cargo van, gas, auto trans., 94,000 miles

1999 Chevrolet Express 3500 cargo van, gas, auto trans., 170,000 miles

1998 Chevrolet C1500 pickup, 4.3L V-6, 2x4, 98,000 miles

1991 GMC pickup, 4.3 L V-6, 2x4, 249,000 miles

## TRAILERS





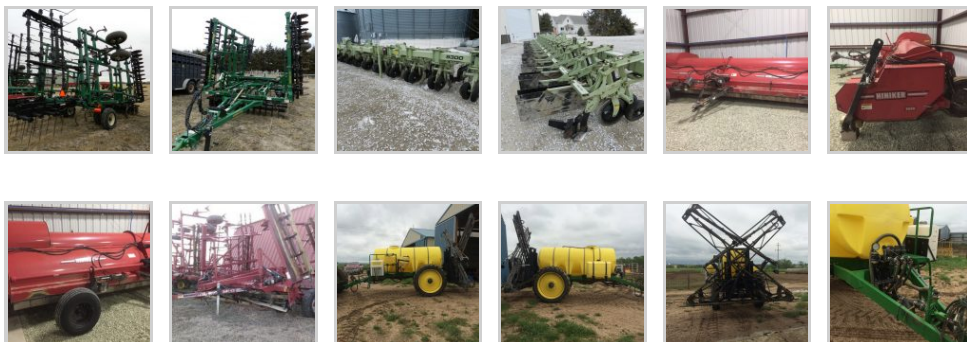
1995 DMF steel double hopper bottom grain trailer, 38 ft., Shurlok electric rollover tarp, new brakes  
 1992 Titan steel gooseneck stock trailer, 7 ft. by 20 ft.  
 Jet 42 ft. steel double hopper bottom trailer w/rollover tarp  
 1986 Cornhusker aluminum double hopper bottom trailer, 43 ft., w/rollover tarp  
 1989 VIM tanker trailer, tandem axle, aluminum, approx. 10,000 gal. tank, w/Honda motor & John Blue 3 inch pump  
 1997 Jetco 24 ft. hopper bottom trailer, tandem axles  
 1998 Inland 50 ft. drop deck trailer, spread axle, w/2-3,500 gal. poly tanks, pump and injection cone  
 1986 DMF flatbed trailer, 102" wide x 28' long, 2 7000# axles  
 Gooseneck flatbed trailer, 24', 2 axle  
 Talbert 48' drop deck trailer, spread axle  
 2002 trailer, 6' x 12', single axle, w/rear & front side ramp  
 Car trailer, 5' x 16', 2 axle, bumper pull  
 Flatbed trailer, 20 ft., 3 axles, bumper hitch  
 1974 Daco flatbed trailer, 102" x 53'  
 Trailer axles

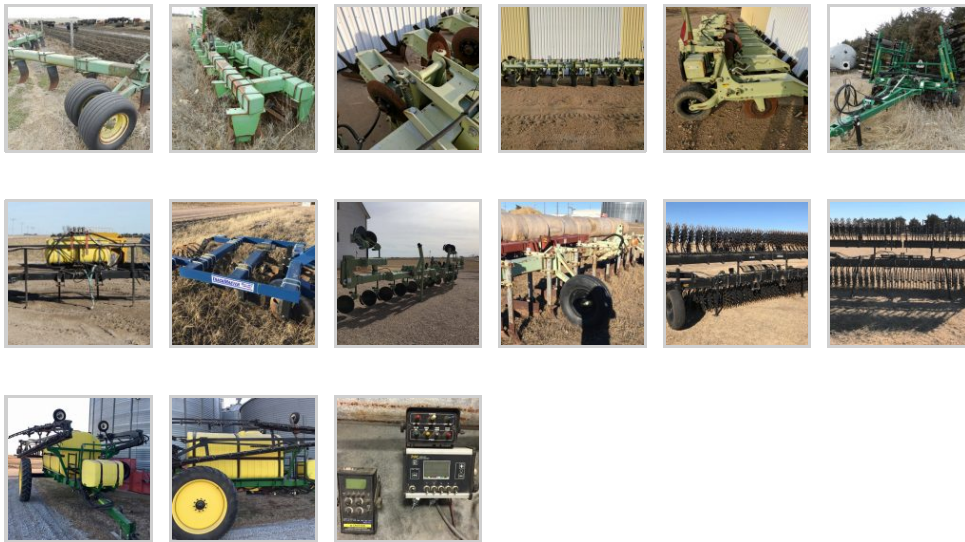
**PLANTERS**



JD 1720 XP planter, stacking fold, 12r36", 3 bu. boxes, precision E set discs, Yetter shark tooth openers w/JD monitor  
 JD 7100 MaxEmerge planter, 8r36" w/folding bar, JD lift assist 1.5 bu. boxes, insecticide boxes, finger pickups, bean cups and JD monitor  
 JD 1700 planter, 8r30", liquid fert., w/JD piston pump, shedded  
 JD bean planter, 20r15", hyd. drive, updates  
 White 6700 planter, 6r36"

**MACHINERY**





Schaben 80 ft. sprayer, 1500 gal. tank, 100 gal. rinse tank, 2 gal. hand wash, T-Jet 844E controller, 5 section shutoff, Raven auto. boom height control, centerline 220 GPS control, 380/90R46 tires

Orthman 9300 cultivator, 12r36" w/sweeps, ridging wings & fender shields, full set emergency flashers

2005 Schaben 60 ft. pull type X folding boom sprayer, 1000 ga. tank, foam markers, hyd. driven, new pump in 2015

2011 Hiniker 5620 8r30" shredder/windrower, pull type w/ towing package

2012 Schaben 8505-3T sprayer, 90 ft. front folding booms, 3 pt.

Orthman 8350 8r30" cultivator

Great Plains 8326 Discovator, 26 ft. w/4 bar lift harrow

Great Plains 2400 Turbo-till, 24 ft. w/rolling pickers & rolling harrow

Great Plains 24 ft. bi-fold drill 7 1/2" spacing, pull type

Besler 12r30" rolling stalk cutter, folding bar w/2 rows angled blades

Balzer 20 ft., pto flail shredder, 3 pt.

20 ft. spring tooth field conditioner, pull type

Fasse 12r36" cultivator, folding w/ridging wings

Orthman 8300 10r30" cultivator, barring off disc & guidance

Orthman 8r30" hiller w/hawking & folding bar

Orthman 6r30" flex hiller

Orthman 6r36" flex hiller

Orthman 8300 6r36" cultivator w/barring off discs & shields

Orthman 6r36" cultivator w/barring off discs

Orthman 15 shank coulter inject liquid applicator

Orthman planter stacker bar, 8r30"

Orthman folding cultivator, 16r30" double bar w/welded hitch

Noble field conditioner, 22 ft., folding spring tooth w/harrow

IHC 183 8r30" cultivator w/Orthman stabilizing discs

Flex King 18 ft. undercutter w/rolling spider harrow, three 6 ft. blades, hyd. wings

Hawkins hiller, 6r36", 7 by 7 bar

Blue Jet track-master pivot track closer, 3 pt.

Besler 8r30" rolling stalk cutter w/harrow, 21 ft., w/one row of cutters, only 400 acres on new blades

Strobel rolling stalk cutter, 8r36", 3 pt.

Deutz Allis disc, model 2500, 18 ft.

Balzer model 2000 semi mount shredder, PTO, 20 ft.

Yetter 3541 rotary hoe, 3 pt., 41 ft., one year old

JD 400 rotary hoe, 20 ft., 3 pt.

3 pt. 10' disc

3 pt. 7' springtooth

J&M welding 3 pt. sprayer, 72 ft. w/300 gal. tank

Liquid fertilizer machine, 15 coulters, w/hyd. pump, 1000 gal. tank

Crustbuster 30 ft. hoe drill

72 ft. 3 pt. sprayer bar, (2) 300 gal. saddle tanks, hoses, 300 gal. front tank

Will Rich 8r36" flopper-chopper, folding, pull type  
 Buffalo rolling stalk cutter, 6r36", 3 pt. w/2 rows of rolling knives  
 Cultivator 12r36", Landoll units on Orthman 7x7 flat folding bar, shields, baring off discs  
 Landoll 6r36" cultivator on ridged bar  
 JD 9 shank deep ripper, 3 pt.  
 Krause 13 1/2 ft. disc, pull type  
 Krause 14 ft. disc, good blades  
 Besler 8r36" stalk chopper  
 Howse 7 ft. shredder, 3 pt.  
 JD 10 ft. springtooth harrow, 3 pt.  
 4 ft. rotary mower/shredder, 3 pt.  
 Oneway disc, 9 ft., 3 pt.  
 3 pt. disc, 7 ft.  
 JD 6 bottom plow, 16", semi mount  
 IHC 4 bottom plow  
 Orthman 30 ft. toolbar, 3 pt., folding

### SKID STEER ATTACHMENTS



All of these items are unused

Lowe 1650 hyd. auger, 12" & 18", w/skid steer quick attach  
 Lowe 750 hyd. auger, 9" & 12", w/skid steer quick attach  
 Lowe 750 hyd. auger, 9", 12", 15" w/skid steer quick attach  
 Stout brush grapple 66-9, w/skid steer quick attach  
 Stout brush grapple 72-8, w/skid steer quick attach  
 Stout brush grapple HD 72-4, w/skid steer quick attach  
 Stout brush grapple XHD 84-6, w/skid steer quick attach  
 2 - Stout brush grapples HD72-FB, w/skid steer quick attach  
 Stout rock bucket grapple 72-3, w/skid steer quick attach  
 Stout rock bucket/brush grapple combo HD 72-3, open-end, w/skid steer quick attach  
 Stout material bucket, 84" w/double-cut edge, w/skid steer quick attach  
 Stout tooth bucket, 84", w/skid steer quick attach  
 Stout snow bucket, 96", w/skid steer quick attach  
 Stout tree & post puller, w/skid steer quick attach  
 Stout walk-through pallet forks, 48", w/skid steer quick attach  
 Stout full-back pallet forks, 48", w/skid steer quick attach  
 2 - Regular pallet forks, 48", w/skid steer quick attach

### AG DRYER SERVICES





2016 610 Pond-Tini pontoon boat, 6'x10' wood deck w/gray carpet, 4 seats, 1200# capacity, Bimini top, navigation lights, tie off cleats, w/trailer  
 Pontoons  
 12 Honda gas motors, new  
 11 Kohler gas motors, Pro7, 208cc, w/electric start  
 Dry Distillers auger box w/gas motor & rollover tarp  
 Auger flighting  
 Galvanized tubing  
 I-Beams  
 Perferated sheets of metal, 3 ft. by 10 ft.  
 Angle iron/channel iron  
 Auger housing  
 sheet metal

Hyd. hose, fittings & filters  
 Black plastic seed tender tubes  
 Drag roller  
 4 Baldor gas motors, new  
 Cable  
 Plywood/Peg Board  
 Concrete Boards  
 Used Electric motors & gear boxes  
 Electric blower, 6", 110 volt  
 Drill press  
 Chop saws  
 Bench grinder

**CONSTRUCTION EQUIPMENT**



Grove RT522 Rough Terrain Crane, diesel  
 Snorkelift A42, gas, hyd. lift  
 (2) Genie Z-45-25 extend-a-booms, gas, 4x4

**EQUIPMENT**





- Clarks 4 box seed tender w/long auger
- Freisen 4 box seed tender, 2 axle trailer
- Ag Dryer 2 box seed tender
- Patriot 220 seed tender on car trailer
- Gravity box wagon seed tender w/hyd auger
- 1000 Patriot helicopter tank, JD 8r mounting
- Raven "Cold Flow" NH3 system
- Misc. Orthman row units, clamps, accessories
- A&L 556 grain cart
- Orthman tracker guidance system
- (2) Westfield tender augers for back of truck
- Header trailers, new
- Box scrapers, new
- 3 pt. blades, new
- (2) Rowse 700 dirt scrapers
- 3 Schaben plastic cone bottom tanks, on trailer, 2,500 gal. each
- 2 CR Mfg. cone bottom bulk tanks on trailer, 2,500 gal. each
- 3,000 gal. & 2,500 gal. cone bottom tanks on trailer
- 12 Orthman ridging wings
- 16 Sunco furrow openers
- Bin fan, 10 hp, centrifical type, 480V, 3 ph.
- Farm King 1385 auger, 13" by 85 ft., small 540
- PTO, low profile swing out hopper
- Acura Trak guidance system, quick hitch
- Lincoln AC/DC arc welder
- Kewanee 8 ft. blade, 3 pt.
- JD MX10 rotary mower, 3 pt.
- 16 Martin floating row cleaners off JD 1720 planter, newer fingers
- John R. Hollingsworth Co. generator on heavy trailer, diesel engine, Model MEP005AAS, SN ASK-30-2169
- 500 gal. fuel barrel
- Meyer 6 1/2 ft. snowblade, elec/hyd.
- 65 gal. tank
- Drive shafts
- Water hydrant, new
- 1100 gal. round flat bottom tank
- Tractor tire rims, 18.4-38
- Cover Master topper for a mid-sized pickup
- Electric motor 7 1/2 hp, 3 ph.
- (3) Weather guard tool boxes, 2 side, 1 cross bed
- Pallet fork w/3 pt. or loader type hookups
- (8) 36 Orthman planter markers
- Orthman lift assist
- (16) 36 Morebuilt planter markers
- (3) 50 gal. round poly tanks
- 200 gal. round poly tank
- Hawkins ridge hugger wheels
- (16) Schaffert 2x fertilizer disks (fits JD MaxEmerge plus and newer)
- Ariens self-propelled rototiller
- JD rims & tires, 18.4-42, ten bolt
- Utility box trailer w/300 gal. fuel tank & 12 v. pump
- Red Ball 250 gal. front mount tank for JD 7000 series, valve, lights
- JD 10 ft. 3 pt. blade, all hyd.
- Waldon 8' dozer, mounts off IH Hydro 100
- Waldon 9' dozer, universal mounts
- Steel wagon box on running gear
- Wooden box on running gear w/hoist
- 50 steel T posts
- Anhydrous vaporizer
- Master 1,800 gal. propane tank
- Garden disc, 3 pt.
- Garden cultivator, 3 pt.
- Grace MFG RM 7000 skid steer mower, 7 ft.
- 400 bu. gravity box wagon
- Clamp on hubs for JD 4440 tractor
- Valk 10' truck snow blade, w/truck mount & cylinders
- 3 shark tooth trash whippers
- 4 elevator weights
- Shop shelving
- Large roll black plastic
- Several reconditioned farm implement tires
- 2 pull type lawn sweeps
- Pickup tool box, new
- 4 wheeler sprayer
- 2 Electric motors, 10 h.p., 3 ph.
- 2 Bearlinks
- Gnuse 3 pt. forklift
- (2) fuel containments for 1,000 gal. tanks, like new
- (2) fuel containments for 500 gal. tanks, like new
- Drying fan for bin
- Aeration fans
- (6) trailer axles

Gravity box wagon on 4 wheel gear, 10 ft. by 4 1/2 ft.  
 Gravity wagon, 120 bu.  
 (8) International 5 ft. cultivator shields  
 16 Schlager closing wheels  
 12 Yetter trash whipper openers  
 Helicopter style saddle tanks (tractor frame mount not included)

(2) 500 gal. diesel tanks  
 (2) 265 gal. helicopter tanks  
 Snowplow for skid steer loader  
 2 Tractor tire chains, 18.4-38  
 Wheat sieves for Case IH 2388 combine  
 (2) 200 gal. poly saddle tanks w/brackets & hose  
 (2) 250 gal. poly saddle tanks w/brackets & hose  
 3 pt. spray boom w/nozzles, 30 ft.

### ATV'S & LAWN MOWERS



2014 Polaris 800 H.D. Ranger, EFI, roof, half windshield w/snow blade, electric winch, only 2,000 miles, sharp  
 2012 JD 850I side by side, RSX, Camo, sport  
 2000 Polaris Sportsman 500, 4x4, 1500 miles, new charging system & battery  
 2012 JD 2445 Easy Track mower, 27 h.p., zero turn, w/48" mulcher deck

### HAY EQUIPMENT



2007 Case IH RBX round baler, mega-wide pickup  
 NH 664 round baler, auto wrap, twine tie  
 JD 566 baler, 8,500 bales, thru JD program, field ready, shedded  
 Case IH 8830 14 ft. diesel windrower, cab, air  
 IHC 37 small square baler, twine tie  
 H&S High Capacity 14 wheel V rake  
 Vermeer R23 twin rake  
 Double bale fork  
 4 wheel gear bale trailer  
 3 pt. bale fork

### LIVESTOCK EQUIPMENT



- Hay feeding wagon, new
- Silage feeding wagon, new
- Haybuster #7 tub grinder, portable w/Cummins diesel engine w/only 200 hrs.
- Haybuster 2620 bale processor, left side discharge
- 120 steel continuous fence panels, 6 bar by 20 ft.
- 60 steel portable corral panels, 5 ft. by 12 ft.
- Titan West head gate w/neck extension
- Calf cradle chute
- (14) 3 ft. by 28 ft. windbreak metal
- Papec 120 feed wagon, 4 ft. by 12 ft.
- Feed wagon 5 ft. by 12 ft.
- 10 wire mesh calf panels in steel frame
- Rolomatic roller mill on stand w/220v single phase motor
- Trojan hyd. squeeze chute w/electric motor
- 30 Heavy duty free standing steel cattle panels, 24' long, 66" high, 2 7/8 pipe w/12 ft., 10 ft., 4 ft. gates
- 11 Baasch cattle panels & trailer
- Tubing panels, various lengths
- Steel walk through gates
- Steel cattle gates
- Steel mesh panels in steel frame
- 3 mineral feeders
- 2 propane tank heaters
- 3 round bale feeders
- Philco cattle head gate
- Stock water tank, 9 ft.
- 4-H calf fitting chute
- 2 - 4-H lamb stands
- 4-H lamb exercise treadmill
- 3 pt. bale unroller
- 3 steel feed bunks
- Steel cattle panels
- (6) 18 ft. steel gates
- 75 Small square bales native prairie hay

## IRRIGATION

- Chevrolet 350 Irrigation motor on cart
- JD 4045T diesel power unit, radiator & clutch, approx. 4,000 hrs.
- Ford 300 6 cyl. power unit, clutch, radiator, propane
- GM 8.1 power unit on frame, N.G. w/clutch & radiator
- Ford 460 power unit on cart w/clutch, N.G.
- Berkley 4" PTO pit pump w/7" intake & 8" discharge on cart w/20 ft. suction pipe
- US Motors 125 hp gear head, 6:5 ratio
- Hollow shaft motor, 40 hp, 3 ph., w/480V panel

4 stage pump, 10"  
4 stage pump, 8"  
Pump head, 10"  
Cooling coils  
Amerillo gear head, 100 hp, 1:1 ratio  
US Motors gear head, 50 hp, 1:1 ratio  
Electric irrigation motor, 30 hp, 1765 rpm, single phase w/pulley  
Berggren 30 ft. pto pit pump  
Eversman pull type ditcher  
Pull type ditcher  
(200) Senninger l/wob sprinklers w/pressure regs  
(85) Nelson rotators w/pressure regs  
(120) 1" steel goosenecks for pivot drops  
(2) Nelson SR100 endguns  
(2) Zimatic center drives  
900 ft. Tex-flo 8" aluminum main line pipe  
Several thousand feet of 6" aluminum main line pipe  
Several thousand feet of 6", 8", 9", & 10" aluminum, gated irrigation pipe  
Several thousand feet of 8" & 10" white plastic, gated irrigation pipe  
5 - Pipe trailers  
Gator Saver aluminum irrigation pipe repair kit, hyd., for 8" & 10" pipe  
Irrigation socks  
Surge valves  
Misc. pipe fittings  
2 Valley pivot wheels & tires, 11.2-38

**All items must be removed by March 14th. Any item left after March 14th will have a \$50 per day rental charge per item due to the Buffalo County Fairground. Loading after March 10th by appointment 308-233-4633 or 308-234-6266. No loading on Sunday March 12.**

## TERMS

Payment in full day of auction by cash or approved check. I.D. required. \$25 title transfer fee applied to titled vehicles. Everything sells "as is" condition - no warranties. Not responsible for accidents.

LUNCH - By Nelson Camp Stove



Search our site

